



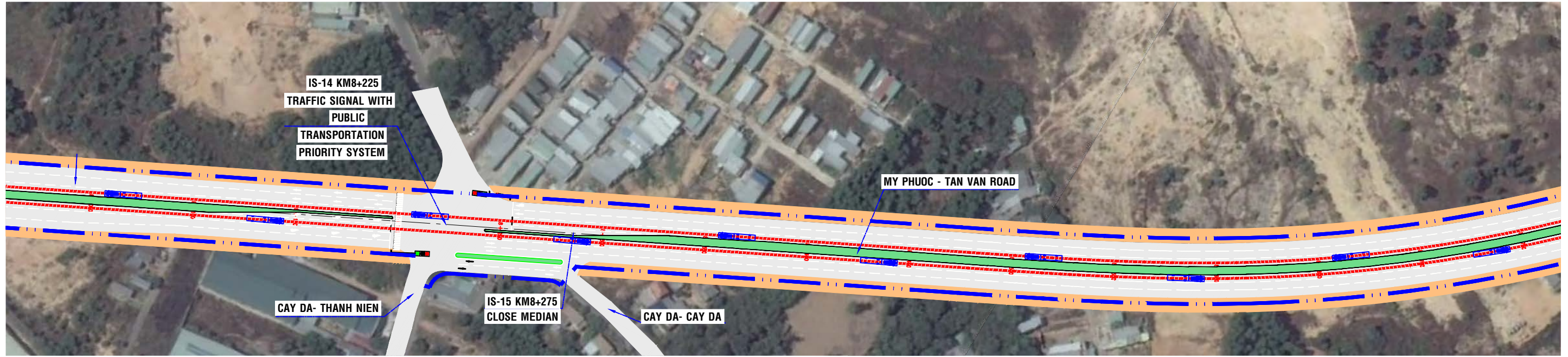
START BEGINNING OF FLYOVER OF DT743

PLAN VIEW OF MY PHUOC - TAN VAN ROAD

SCALE:1/2000



BINH DUONG NEW CITY

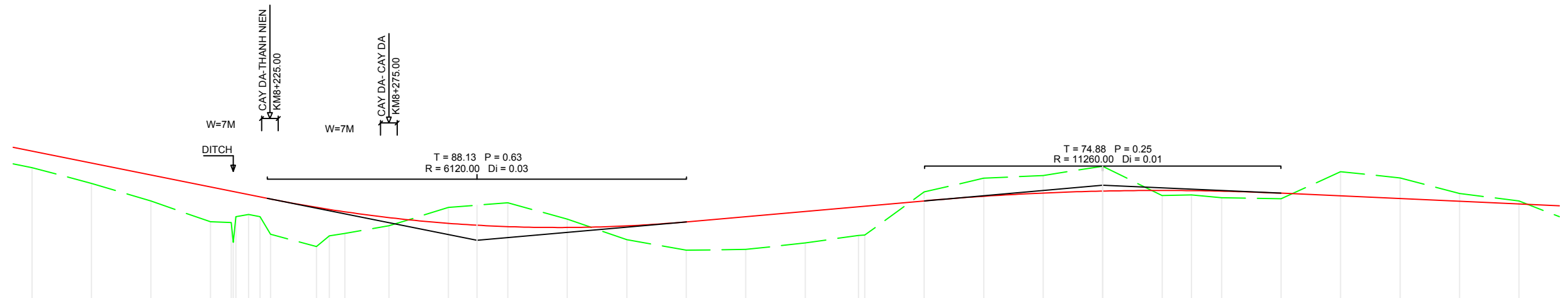


PROFILE VIEW OF MY PHUOC - TAN VAN ROAD

SCALE:1/2000

NOTES/ GHI CHÚ:

- SIDEWALK
- PAVEMENT
- GREEN BELT
- CENTERLINE
- BRT DIRECTION
- ROW
- BUS
- TRAFFIC LIGHT



PROFILE	2.00%																				0.88%										0.45%							
DESIGN ELEVATION	262.00																				263.00										300.00							
EXISTING ELEVATION	19.81	19.15	18.41	17.54	17.00	16.66	16.50	16.95	17.05	17.37	18.14	18.34	17.65	16.79	16.35	16.38	16.65	17.98	18.10	18.79	19.37	19.48	19.87	18.64	18.67	18.55	18.51	19.64	19.38	18.73	18.41							
DISTANCE	25.00	25.00	25.00	8.74	5.38	4.38	19.34	5.43	6.47	18.63	25.00	25.00	25.00	25.00	25.00	25.00	22.35	25.00	25.00	25.00	25.00	25.00	25.00	12.35	12.65	25.00	25.00	25.00	25.00	25.00								
STATION	8125.00	8150.00	8175.00	8200.00	8208.74	8213.12	8222.46	8241.80	8248.27	8254.74	8274.00	8300.00	8325.00	8350.00	8375.00	8400.00	8425.00	8450.00	8472.35	8500.00	8525.00	8550.00	8575.00	8600.00	8612.35	8625.00	8650.00	8675.00	8700.00	8725.00	8750.00							
STAKE	C4	C5	C6	H2	C8	C10	C11	C12	C13	C14	H3	C15	C16	C17	H4	C18	C19	ND8	C20	H5	C21	C22	C23	H6	TD8	C24	C25	C26	H7	C27	C28							
GEOMETRY ALIGNMENT	A=41d39°6" R=750 K=685.22 T=355.68 P=53.59																																					

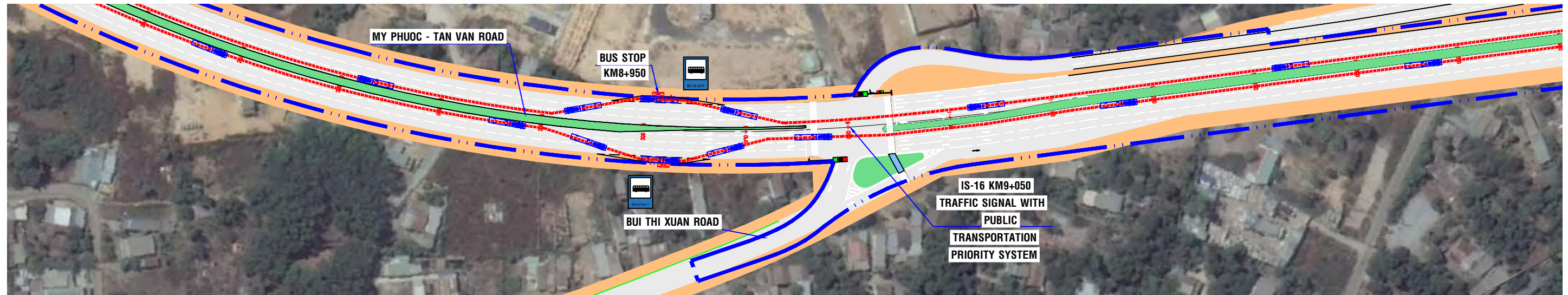
PROJECT NAME	CLIENT	COUNTERPART	CONSULTANT	DWG TITLE	DWG No.	
PREPARATORY SURVEY ON TRANSIT ORIENTED DEVELOPMENT (URBAN DEVELOPMENT AROUND PUBLIC TRANSPORT HUB) PROJECT AND BRT DEVELOPMENT PROJECT	JAPAN INTERNATIONAL COOPERATION AGENCY (JICA)	HO CHI MINH CITY PEOPLE'S COMMITTEE DEPARTMENT OF TRANSPORT	BINH DUONG PROVINCE PEOPLE'S COMMITTEE DEPARTMENT OF TRANSPORT	TOKYU CORPORATION NIPPON KOEI CO.,LTD. NIKKEN SEKKEI RESEARCH INSTITUTE KRI INTERNATIONAL CORPORATION SUB-CONSULTANT HUNG NGHIEP CONSTRUCTION CONSULTING CO., LTD	SECTION 2 PLAN AND PROFILE OF MY PHUOC - TAN VAN ROAD (14/35)	SE2 - 15 SCALE 1/2000

← START BEGINNING OF FLYOVER OF DT743

PLAN VIEW OF MY PHUOC - TAN VAN ROAD
SCALE:1/2000



→ BINH DUONG NEW CITY

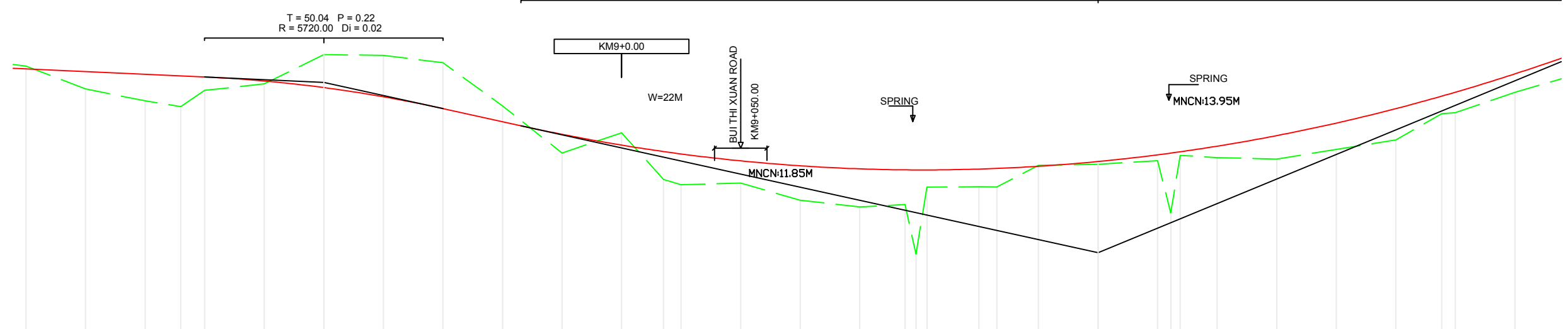


PROFILE VIEW OF MY PHUOC - TAN VAN ROAD
SCALE:1/2000

T = 242.35 P = 3.83
R = 7670.00 Di = 0.06

ASPHALT ROAD
KM9+344.29

T = 50.04 P = 0.22
R = 5720.00 Di = 0.02



NOTES/ GHI CHÚ:

- SIDEWALK
- PAVEMENT
- GREEN BELT
- CENTERLINE
- BRT DIRECTION
- ROW
- BUS
- TRAFFIC LIGHT

PROFILE	2.20%																																		
DESIGN ELEVATION	18.29	18.18	18.06	18.00	17.95	17.78	17.51	17.12	16.63	16.08	15.55	15.09	14.82	14.72	14.43	14.22	14.10	14.06	14.05	14.05	14.09	14.11	14.21	14.40	14.69	14.76	14.81	15.05	15.49	16.02	16.62	17.15	17.31	18.08	
EXISTING ELEVATION	18.41	17.45	16.95	16.71	17.39	17.66	18.89	18.86	18.55	16.74	14.76	15.61	13.65	13.43	13.50	12.78	12.50	12.60	10.52	14.05	13.33	13.35	13.34	14.24	14.29	14.44	12.25	14.66	14.57	14.51	14.91	15.31	16.41	16.45	17.31
DISTANCE	25.00	25.00	14.96	10.04	25.00	25.00	25.00	25.00	25.00	25.00	25.00	17.57	7.43	25.00	25.00	25.00	19.00	4.66	4.64	21.80	7.57	17.43	25.00	25.00	25.00	5.56	3.93	15.51	25.00	25.00	25.00	19.29	5.71	25.00	25.00
STATION	8750.00	8775.00	8800.00	8814.96	8825.00	8850.00	8875.00	8900.00	8925.00	8950.00	8975.00	9000.00	9017.57	9025.00	9050.00	9075.00	9100.00	9119.00	9123.56	9128.20	9150.00	9157.57	9175.00	9200.00	9225.00	9230.96	9234.49	9250.00	9275.00	9300.00	9325.00	9344.29	9350.00	9375.00	
STAKE	C28	C29	H8	P8	C30	C31	C32	H9	C33	C34	C35	KM9	TC8	C1	C2	C3	H1	C4	C5	C6	C7	NC8	C8	H2	C9	C10	C11	C12	C13	H3	C14	C15	C16	C17	
GEOMETRY ALIGNMENT	L1=140.00 L2=140.00 isc1=2.00 w1=0.00 isc2=2.00 w2=0.00																																		

PROJECT NAME	CLIENT	COUNTERPART	CONSULTANT	DWG TITLE	DWG No.	
PREPARATORY SURVEY ON TRANSIT ORIENTED DEVELOPMENT (URBAN DEVELOPMENT AROUND PUBLIC TRANSPORT HUB) PROJECT AND BRT DEVELOPMENT PROJECT	JAPAN INTERNATIONAL COOPERATION AGENCY (JICA)	HO CHI MINH CITY PEOPLE'S COMMITTEE DEPARTMENT OF TRANSPORT	BINH DUONG PROVINCE PEOPLE'S COMMITTEE DEPARTMENT OF TRANSPORT	TOKYU CORPORATION NIPPON KOEI CO.,LTD. NIKKEN SEKKEI RESEARCH INSTITUTE KRI INTERNATIONAL CORPORATION	SECTION 2 PLAN AND PROFILE OF MY PHUOC - TAN VAN ROAD (15/35)	SE2 - 16
				SUB-CONSULTANT		SCALE
				HUNG NGHIEP CONSTRUCTION CONSULTING CO., LTD		1/2000



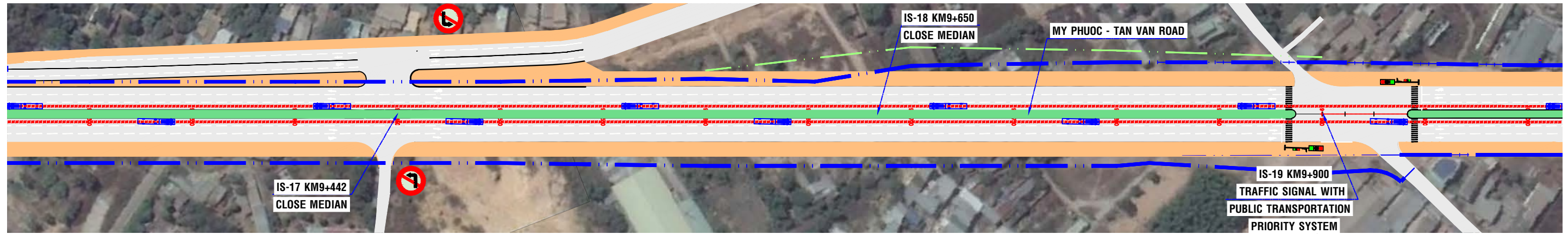
START BEGINNING OF FLYOVER OF DT743

PLAN VIEW OF MY PHUOC - TAN VAN ROAD

SCALE:1/2000



BINH DUONG
NEW CITY



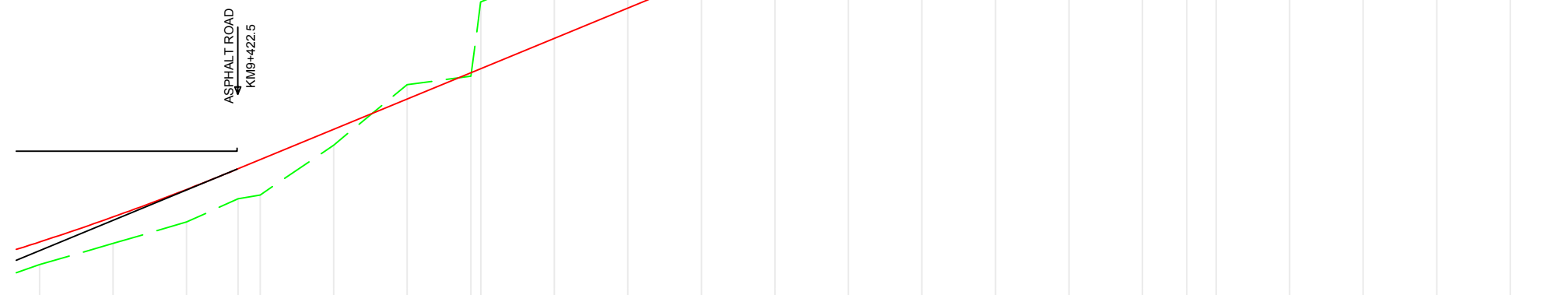
PROFILE VIEW OF MY PHUOC - TAN VAN ROAD

SCALE:1/2000

T = 98.70 P = 0.97
R = 5000.00 Di = 0.04

NOTES/ GHI CHÚ:

- SIDEWALK
- PAVEMENT
- GREEN BELT
- CENTERLINE
- BRT DIRECTION
- ROW
- BUS
- TRAFFIC LIGHT



PROFILE	4.12%																	0.17%																
DESIGN ELEVATION	565.00																	132.67																
EXISTING ELEVATION	17.31	18.03	18.93	19.87	20.57	20.88	21.91	22.94	23.83	23.97	25.00	26.03	27.06	28.09	29.12	30.14	31.06	31.86	32.54	33.08	33.51	33.81	33.98	34.04										
DISTANCE		25.00	25.00	17.50	7.50	25.00	25.00	21.64	3.38	25.00	25.00	25.00	25.00	25.00	25.00	25.00	25.00	25.00	25.00	25.00	25.00	25.00	25.00	25.00										
STATION	9375.00	9400.00	9425.00	9442.50	9450.00	9475.00	9500.00	9521.64	9525.00	9550.00	9575.00	9600.00	9625.00	9650.00	9675.00	9700.00	9725.00	9750.00	9775.00	9800.00	9825.00	9850.00	9875.00											
STAKE	C17	H4	C18	GIAØ19	C20	H5	C21	C20A	C22	C23	C24	C25	C26	C27	H7	C28	C29	C30	H8	C31	C32	C33												
GEOMETRY ALIGNMENT																																		

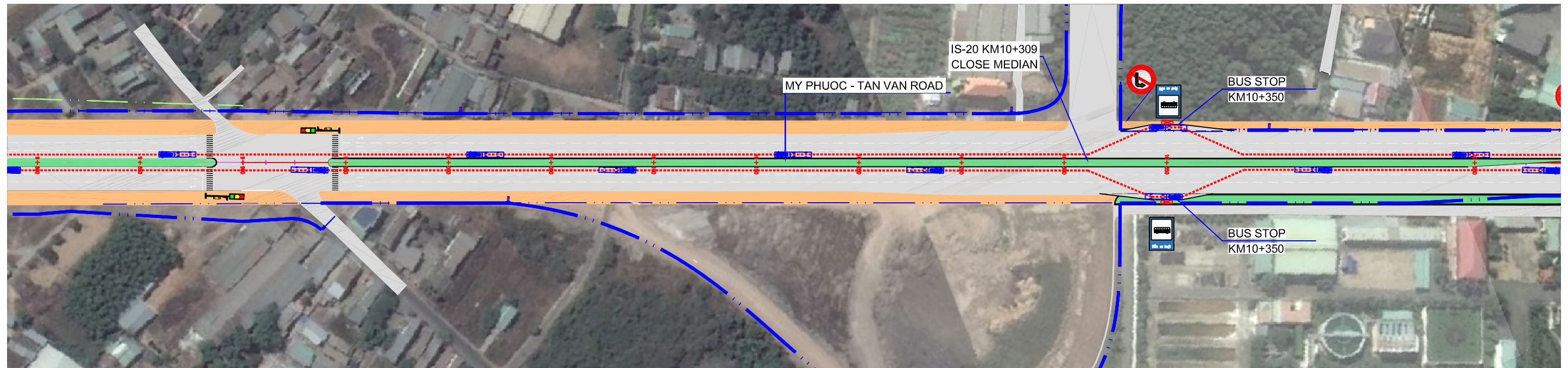
PROJECT NAME	CLIENT	COUNTERPART	CONSULTANT	DWG TITLE	DWG No.	
PREPARATORY SURVEY ON TRANSIT ORIENTED DEVELOPMENT (URBAN DEVELOPMENT AROUND PUBLIC TRANSPORT HUB) PROJECT AND BRT DEVELOPMENT PROJECT	JAPAN INTERNATIONAL COOPERATION AGENCY (JICA)	HO CHI MINH CITY PEOPLE'S COMMITTEE DEPARTMENT OF TRANSPORT	BINH DUONG PROVINCE PEOPLE'S COMMITTEE DEPARTMENT OF TRANSPORT	TOKYU CORPORATION NIPPON KOEI CO.,LTD. NIKKEN SEKKEI RESEARCH INSTITUTE KRI INTERNATIONAL CORPORATION	SECTION 2 PLAN AND PROFILE OF MY PHUOC - TAN VAN ROAD (16/35)	SE2 - 17
				SUB-CONSULTANT		SCALE
				HUNG NGHIEP CONSTRUCTION CONSULTING CO., LTD		1/2000

SUOI TIEN STATION

PLAN VIEW OF MY PHUOC - TAN VAN ROAD

SCALE:1/2000

BINH DUONG NEW CITY



PROFILE VIEW OF MY PHUOC - TAN VAN ROAD

SCALE:1/2000

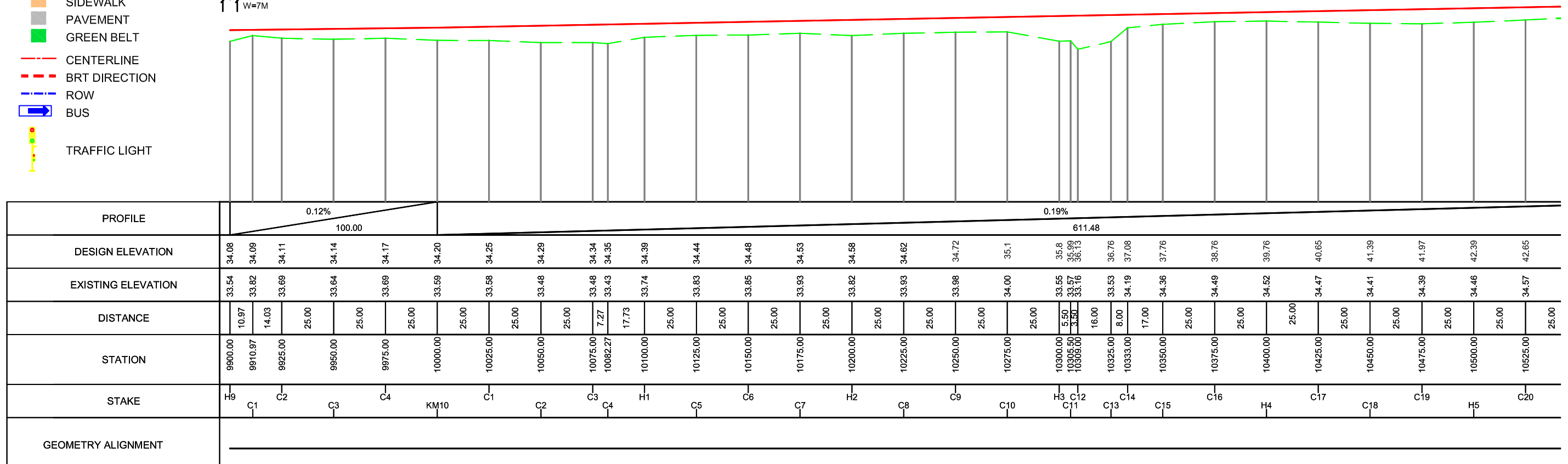
NOTES/ GHI CHÚ:

- SIDEWALK
- PAVEMENT
- GREEN BELT
- CENTERLINE
- BRT DIRECTION
- ROW
- BUS
- TRAFFIC LIGHT

TRAN QUANG DIEU ROAD
KM9+900.00

KM10+0.00

ASPHALT ROAD
KM10+308.00



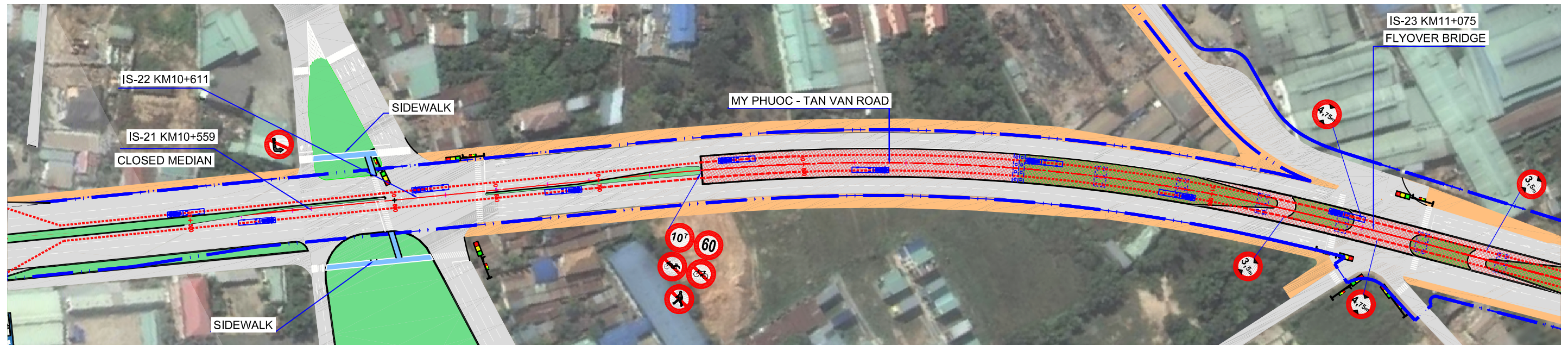
PROJECT NAME	CLIENT	COUNTERPART	CONSULTANT	DWG TITLE	DWG No.	
PREPARATORY SURVEY ON TRANSIT ORIENTED DEVELOPMENT (URBAN DEVELOPMENT AROUND PUBLIC TRANSPORT HUB) PROJECT AND BRT DEVELOPMENT PROJECT	JAPAN INTERNATIONAL COOPERATION AGENCY (JICA)	HO CHI MINH CITY PEOPLE'S COMMITTEE DEPARTMENT OF TRANSPORT	BINH DUONG PROVINCE PEOPLE'S COMMITTEE DEPARTMENT OF TRANSPORT	TOKYU CORPORATION NIPPON KOEI CO.,LTD. NIKKEN SEKKEI RESEARCH INSTITUTE KRI INTERNATIONAL CORPORATION	SECTION 2 PLAN AND PROFILE OF MY PHUOC - TAN VAN ROAD (17/35)	SE2 - 18
				SUB-CONSULTANT		SCALE
				HUNG NGHIEP CONSTRUCTION CONSULTING CO., LTD		1/2000

SUOI TIEN STATION

PLAN VIEW OF MY PHUOC - TAN VAN ROAD

SCALE:1/2000

BINH DUONG NEW CITY

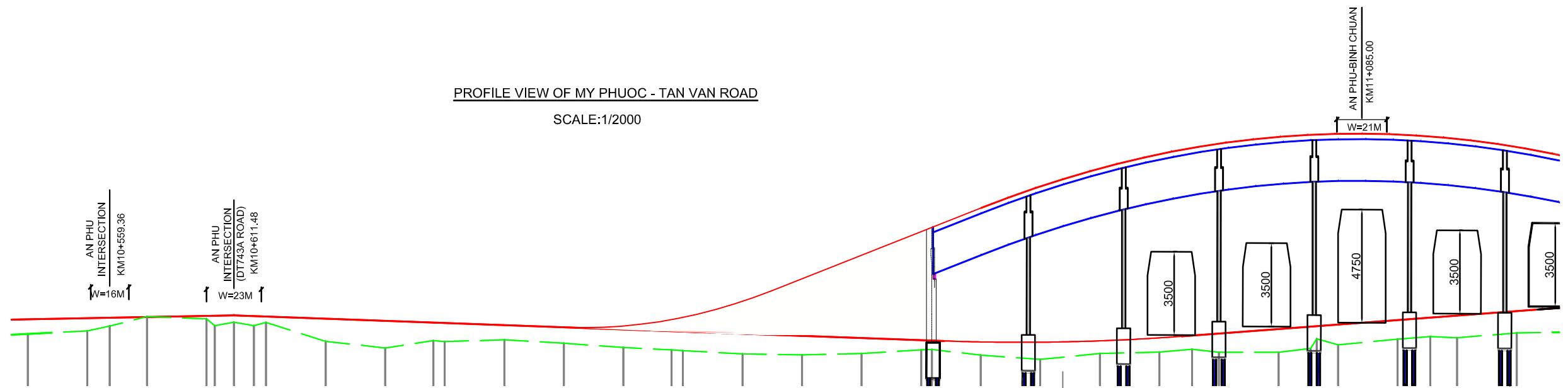


PROFILE VIEW OF MY PHUOC - TAN VAN ROAD

SCALE:1/2000

NOTES/ GHI CHÚ:

- SIDEWALK
- PAVEMENT
- GREEN BELT
- CENTERLINE
- BRT DIRECTION
- ROW
- BUS
- TRAFFIC LIGHT



PROFILE	0.36% 138.84										4.00% 333.10																										
DESIGN ELEVATION	42.65	42.76	42.77	42.77	42.77	42.77	42.77	42.74	42.57	42.31	42.24	41.75	34.9	35.17	35.26	35.94	36.89	37.88	38.86	39.04	39.9	40.76	41.61	42.11	42.37	42.55	42.84	42.88	42.97	42.94	42.86	42.76	42.42				
EXISTING ELEVATION	34.57	34.70	34.90	35.30	35.20	34.92	35.06	34.92	35.05	34.26	33.98	34.29	34.25	34.32	34.18	34.00	33.90	33.87	33.73	33.69	33.75	33.90	33.92	33.68	33.50	33.75	33.81	33.93	33.80	33.80	33.51	33.99	34.11	34.35	34.46	34.41	34.61
DISTANCE		25.00	9.36	15.64	25.00	3.34	8.04	8.39	5.13	25.00	25.00	20.20	4.80	25.00	25.00	20.20	4.80	25.00	25.00	25.00	25.00	4.47	20.53	25.00	25.00	25.00	13.73	11.27	25.00	13.51	8.99	25.00	13.73	11.27	25.00	25.00	
STATION	10525.00	10550.00	10559.36	10575.00	10600.00	10603.34	10611.48	10619.87	10625.00	10650.00	10675.00	10695.20	10700.00	10725.00	10750.00	10775.00	10795.20	10800.00	10825.00	10850.00	10875.00	10900.00	10904.47	10925.00	10950.00	10975.00	11000.00	11013.73	11025.00	11050.00	11083.51	11075.00	11100.00	11113.73	11125.00	11150.00	
STAKE	C20	C21	C22	C23	H6 C24	C25	C26	C27	C28	C29	H7 ND9	C30	C31	C32	TD9 H8	C33	C34	C35	H9 C36	C37	C38	KM11	TC9	C1	C2	C3 GIAO	C4	H1	NC9	C5	C6						
GEOMETRY ALIGNMENT											A=159d43°18.1" R=900.00 K=418.53 T=211.03 P=14.75										L1=100.00 L2=100.00 isc1=2.00 w1=0.00 isc2=2.00 w2=0.00																

PROJECT NAME	CLIENT	COUNTERPART	CONSULTANT	DWG TITLE	DWG No.	
PREPARATORY SURVEY ON TRANSIT ORIENTED DEVELOPMENT (URBAN DEVELOPMENT AROUND PUBLIC TRANSPORT HUB) PROJECT AND BRT DEVELOPMENT PROJECT	JAPAN INTERNATIONAL COOPERATION AGENCY (JICA)	HO CHI MINH CITY PEOPLE'S COMMITTEE DEPARTMENT OF TRANSPORT	BINH DUONG PROVINCE PEOPLE'S COMMITTEE DEPARTMENT OF TRANSPORT	TOKYU CORPORATION NIPPON KOEI CO.,LTD. NIKKEN SEKKEI RESEARCH INSTITUTE KRI INTERNATIONAL CORPORATION	SECTION 2 PLAN AND PROFILE OF MY PHUOC - TAN VAN ROAD (18/35)	SE2 - 19
				SUB-CONSULTANT		SCALE
				HUNG NGHIEP CONSTRUCTION CONSULTING CO., LTD		1/2000