



START BEGINNING OF FLYOVER OF DT743

PLAN VIEW OF MY PHUOC - TAN VAN ROAD

SCALE:1/2000



BINH DUONG NEW CITY

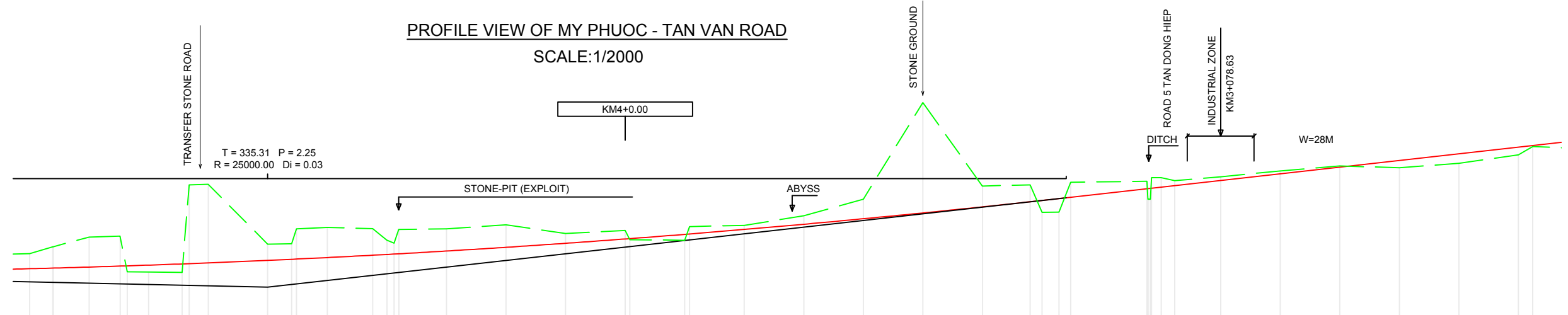


NOTES/ GHI CHÚ:

- SIDEWALK
- PAVEMENT
- GREEN BELT
- CENTERLINE
- BRT DIRECTION
- ROW
- BUS
- TRAFFIC LIGHT

PROFILE VIEW OF MY PHUOC - TAN VAN ROAD

SCALE:1/2000



PROFILE	2.14%																																					
DESIGN ELEVATION	16.93	16.96	17.07	17.15	17.23	17.33	17.42	17.63	17.74	17.87	18.06	18.13	18.18	18.41	18.73	19.06	19.48	19.81	20.22	20.66	21.12	21.61	22.12	22.55	22.86	22.92	23.00	23.78	23.90	24.33	24.89	25.45	26.01	26.57	27.13	27.27		
EXISTING ELEVATION	18.33	16.90	19.72	18.80	16.79	18.75	24.15	19.12	18.45	20.53	20.43	18.46	20.38	20.40	20.74	20.02	19.37	18.65	20.70	21.50	22.90	31.00	24.00	24.10	24.10	21.80	21.81	24.32	20.80	24.70	24.46	24.77	25.27	25.68	25.54	25.91	26.62	27.31
DISTANCE	9.74	6.63	15.06	13.00	9.00	14.00	8.00	24.94	10.06	13.00	19.00	6.00	2.00	20.00	25.00	25.00	25.00	25.00	25.00	25.00	25.00	25.00	20.00	5.00	7.12	4.88	32.00	5.70	19.30	25.00	25.00	25.00	25.00	25.00	25.00	6.00	19.00	
STATION	3750.00	3759.84	3775.00	3788.00	3800.00	3814.00	3825.00	3849.94	3889.00	3875.00	3894.00	3900.00	3905.00	3925.00	3950.00	3975.00	4000.00	4025.00	4050.00	4075.00	4100.00	4125.00	4150.00	4170.00	4175.00	4182.12	4187.00	4220.00	4225.00	4230.70	4250.00	4275.00	4300.00	4325.00	4350.00	4375.00	4381.00	
STAKE	C18	ND2	C19	DH	H38	DH	C20	TD2	DH	C22	H39	DH	C23	C24	C25	KD	DH	C27	C28	H41	C29	C30	DH	C31	PG	DH	DH	C32	G1	C33	C34	H43	C35	C36	C37	G2		
GEOMETRY ALIGNMENT	A=32445'23" R=1000 K=683.12 T=350.46 P=42.82 L1=114.19 L2=110.00 isc1=2.00 w1=0.00 isc2=2.00 w2=0.00																																					

PROJECT NAME	CLIENT	COUNTERPART	CONSULTANT	DWG TITLE	DWG No.
PREPARATORY SURVEY ON TRANSIT ORIENTED DEVELOPMENT (URBAN DEVELOPMENT AROUND PUBLIC TRANSPORT HUB) PROJECT AND BRT DEVELOPMENT PROJECT	JAPAN INTERNATIONAL COOPERATION AGENCY (JICA)	HO CHI MINH CITY PEOPLE'S COMMITTEE DEPARTMENT OF TRANSPORT	BINH DUONG PROVINCE PEOPLE'S COMMITTEE DEPARTMENT OF TRANSPORT	TOKYU CORPORATION NIPPON KOEI CO.,LTD. NIKKEN SEKKEI RESEARCH INSTITUTE KRI INTERNATIONAL CORPORATION	SECTION 2 PLAN AND PROFILE OF MY PHUOC - TAN VAN ROAD (7/35)
				SUB-CONSULTANT	
				HUNG NGHIEP CONSTRUCTION CONSULTING CO., LTD	
					SE2 - 08
					SCALE
					1/2000



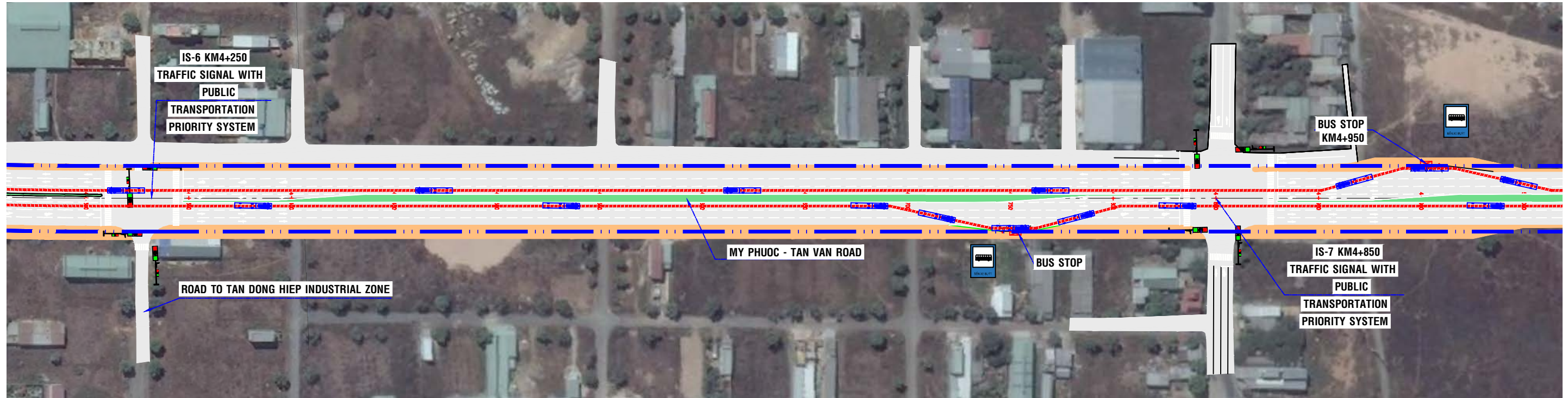
START BEGINNING OF FLYOVER OF DT743

PLAN VIEW OF MY PHUOC - TAN VAN ROAD

SCALE:1/2000



BINH DUONG NEW CITY

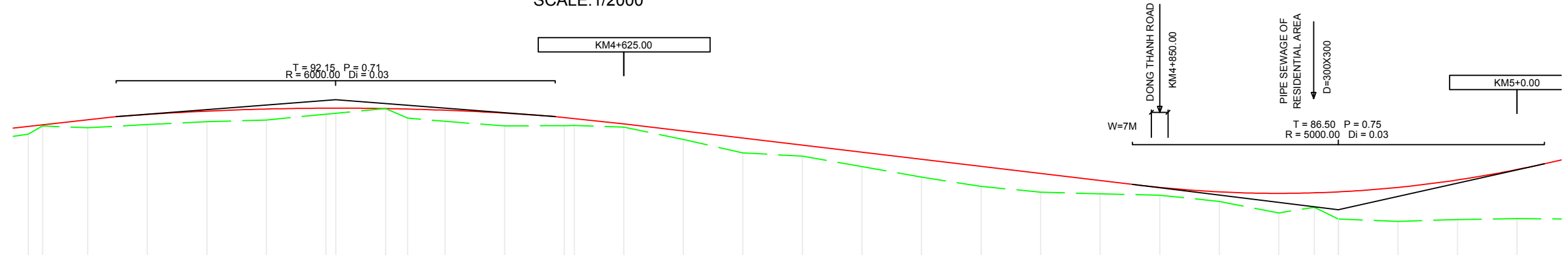


PROFILE VIEW OF MY PHUOC - TAN VAN ROAD

SCALE:1/2000

NOTES/ GHI CHÚ:

- SIDEWALK
- PAVEMENT
- GREEN BELT
- CENTERLINE
- BRT DIRECTION
- ROW
- BUS
- TRAFFIC LIGHT



PROFILE	1.23%																													
DESIGN ELEVATION	27.13	27.27	27.69	28.15	28.43	28.60	28.67	28.64	28.60	28.50	28.26	27.91	27.85	27.53	27.23	26.92	26.61	26.30	26.00	25.69	25.38	25.07	24.78	24.59	24.53	24.55	24.59	24.76	25.09	25.53
EXISTING ELEVATION	26.62	27.31	27.16	27.43	27.67	27.81	28.30	28.78	27.97	27.70	27.31	27.34	27.35	27.45	26.79	26.23	26.09	25.65	25.21	24.82	24.58	24.51	24.45	24.19	23.71	23.94	23.45	23.35	23.43	23.47
DISTANCE	6.00	19.00	25.00	25.00	25.00	25.00	25.00	9.29	15.71	25.00	25.00	4.29	20.71	25.00	25.00	25.00	25.00	25.00	25.00	25.00	25.00	25.00	25.00	25.00	14.86	10.14	25.00	25.00	25.00	25.00
STATION	4375.00	4381.00	4400.00	4425.00	4450.00	4475.00	4500.00	4525.00	4534.29	4550.00	4575.00	4600.00	4604.29	4625.00	4650.00	4675.00	4700.00	4725.00	4750.00	4775.00	4800.00	4825.00	4850.00	4875.00	4900.00	4914.86	4925.00	4950.00	4975.00	5000.00
STAKE	C37G2	H44	C38	C39	C40	H45	C41	TC2	C42	C43	H46	C25	C26	C27	H7	C28	C29	C30	H8	C31	C32	C33	H9	C34	C35	C36	C37	KM5		
GEOMETRY ALIGNMENT																														

PROJECT NAME	CLIENT	COUNTERPART	CONSULTANT	DWG TITLE	DWG No.
PREPARATORY SURVEY ON TRANSIT ORIENTED DEVELOPMENT (URBAN DEVELOPMENT AROUND PUBLIC TRANSPORT HUB) PROJECT AND BRT DEVELOPMENT PROJECT	JAPAN INTERNATIONAL COOPERATION AGENCY (JICA)	HO CHI MINH CITY PEOPLE'S COMMITTEE DEPARTMENT OF TRANSPORT	BINH DUONG PROVINCE PEOPLE'S COMMITTEE DEPARTMENT OF TRANSPORT	TOKYU CORPORATION NIPPON KOEI CO.,LTD. NIKKEN SEKKEI RESEARCH INSTITUTE KRI INTERNATIONAL CORPORATION	SECTION 2 PLAN AND PROFILE OF MY PHUOC - TAN VAN ROAD (8/35)
				SUB-CONSULTANT	
				HUNG NGHIEP CONSTRUCTION CONSULTING CO., LTD	
					SE2 - 09
					SCALE
					1/2000



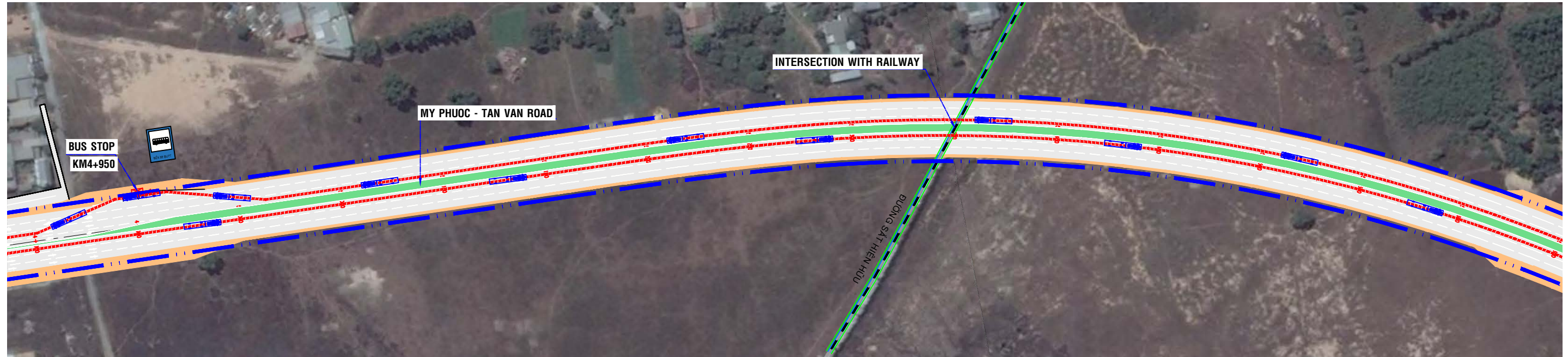
START BEGINNING OF FLYOVER OF DT743

PLAN VIEW OF MY PHUOC - TAN VAN ROAD

SCALE:1/2000



BINH DUONG NEW CITY



PROFILE VIEW OF MY PHUOC - TAN VAN ROAD

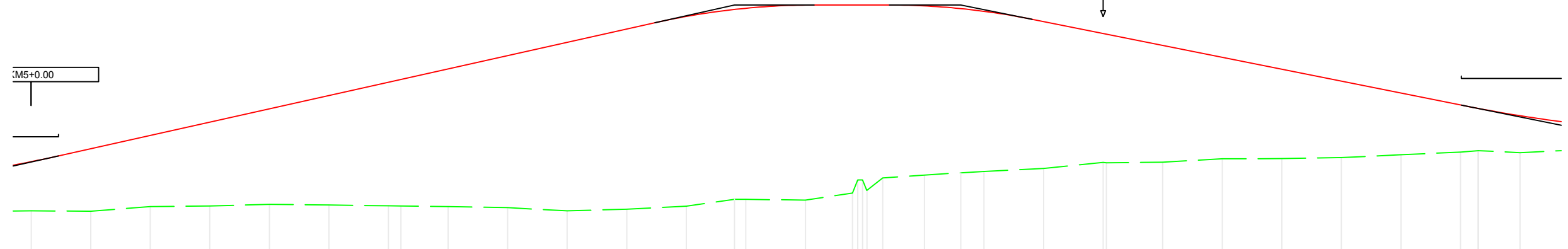
SCALE:1/2000

RAILWAY FLYOVER, L= 21M
 T = 33.45 P = 0.19 R = 3000.00 Di = 0.02
 T = 29.98 P = 0.15 R = 3000.00 Di = 0.02

ASPHALT ROAD
KM5+450.00

NOTES/ GHI CHÚ:

- SIDEWALK
- PAVEMENT
- GREEN BELT
- CENTERLINE
- BRT DIRECTION
- ROW
- BUS
- TRAFFIC LIGHT



PROFILE	2.23%										0.00%					2.00%														
DESIGN ELEVATION	25.53	26.07	26.63	27.19	27.75	28.30	28.86	29.42	29.98	30.53	31.09	31.62	32.10	32.10	32.10	32.10	32.06	31.84	31.40	30.86	30.41	29.91	29.41	28.91	28.41	27.91	27.76	27.46		
EXISTING ELEVATION	23.47	23.45	23.65	23.67	23.74	23.71	23.68	23.67	23.65	23.60	23.47	23.54	23.66	23.95	23.95	24.85	24.97	25.12	25.25	25.58	25.51	25.65	25.66	25.70	25.82	25.93	25.99	25.91		
DISTANCE	25.00	25.00	25.00	25.00	25.00	25.00	5.23	19.77	25.00	25.00	25.00	20.23	4.77	25.00	19.79	6.61	17.56	25.00	25.00	25.00	23.65	25.00	25.00	25.00	25.00	25.00	25.00	25.00		
STATION	5000.00	5025.00	5050.00	5075.00	5100.00	5125.00	5150.00	5155.23	5175.00	5200.00	5225.00	5250.00	5275.00	5295.23	5300.00	5325.00	5344.79	5357.44	5375.00	5400.00	5425.00	5450.00	5475.00	5500.00	5525.00	5550.00	5575.00	5600.00	5607.46	5625.00
STAKE	KM5	C1	C2	C3	H1	C4	C5	C6	H2	C7	C8	C9	TD#3	C10	C11	C12	C13	C14	C15	H4	C16	C17	C18	H5	C18	C20	C21	H6	C22	
GEOMETRY ALIGNMENT																A=32d23'18" R=800 K=592.23 T=302.61 P=34.12					L1=140.00 L2=140.00 isc1=2.00 w1=0.00 isc2=2.00 w2=0.00									

PROJECT NAME	CLIENT	COUNTERPART	CONSULTANT	DWG TITLE	DWG No.	
PREPARATORY SURVEY ON TRANSIT ORIENTED DEVELOPMENT (URBAN DEVELOPMENT AROUND PUBLIC TRANSPORT HUB) PROJECT AND BRT DEVELOPMENT PROJECT	JAPAN INTERNATIONAL COOPERATION AGENCY (JICA)	HO CHI MINH CITY PEOPLE'S COMMITTEE DEPARTMENT OF TRANSPORT	BINH DUONG PROVINCE PEOPLE'S COMMITTEE DEPARTMENT OF TRANSPORT	TOKYU CORPORATION NIPPON KOEI CO.,LTD. NIKKEN SEKKEI RESEARCH INSTITUTE KRI INTERNATIONAL CORPORATION	SECTION 2 PLAN AND PROFILE OF MY PHUOC - TAN VAN ROAD (9/35)	SE2 - 10
				SUB-CONSULTANT		SCALE
				HUNG NGHIEP CONSTRUCTION CONSULTING CO., LTD		1/2000



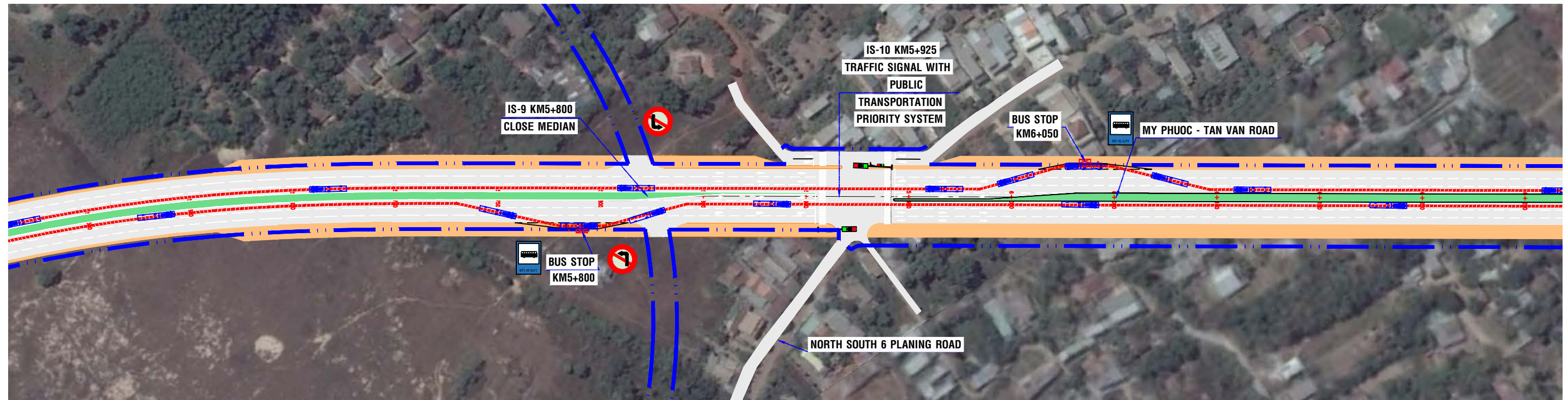
START BEGINNING OF FLYOVER OF DT743

PLAN VIEW OF MY PHUOC - TAN VAN ROAD

SCALE:1/2000



BINH DUONG NEW CITY

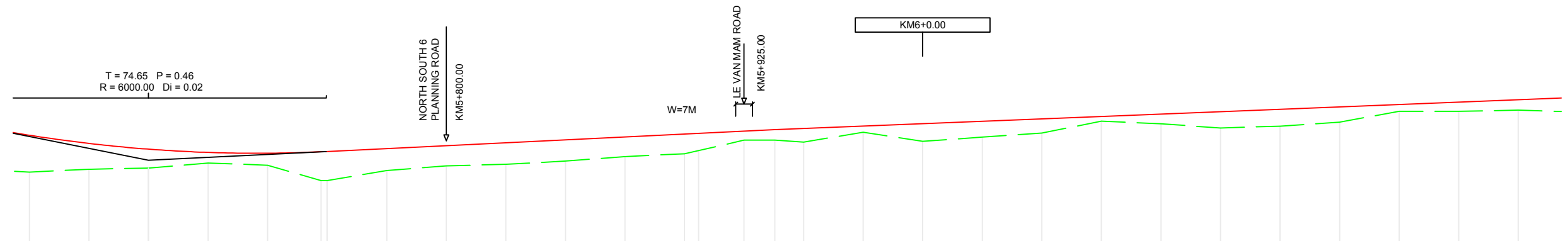


PROFILE VIEW OF MY PHUOC - TAN VAN ROAD

SCALE:1/2000

NOTES/ GHI CHÚ:

- SIDEWALK
- PAVEMENT
- GREEN BELT
- CENTERLINE
- BRT DIRECTION
- ROW
- BUS
- TRAFFIC LIGHT



PROFILE	0.49%																											
DESIGN ELEVATION	27.46	27.11	26.87	26.74	26.70	26.78	26.90	27.02	27.14	27.27	27.39	27.51	27.54	27.63	27.70	27.75	27.85	27.95	28.05	28.15	28.25	28.35	28.45	28.55	28.65	28.75	28.85	28.95
EXISTING ELEVATION	25.91	26.03	26.08	26.29	26.20	25.55	25.98	26.17	26.24	26.37	26.56	26.68	26.81	27.25	27.25	27.17	27.58	27.20	27.38	27.55	28.05	27.94	27.76	27.84	28.01	28.46	28.46	28.51
DISTANCE	25.00	25.00	25.00	25.00	22.46	25.00	25.00	25.00	25.00	25.00	25.00	5.92	19.08	12.92	12.08	25.00	25.00	25.00	25.00	25.00	25.00	25.00	25.00	25.00	25.00	25.00	25.00	25.00
STATION	5625.00	5650.00	5675.00	5700.00	5725.00	5750.00	5775.00	5800.00	5825.00	5850.00	5875.00	5900.00	5905.92	5925.00	5937.92	5950.00	5975.00	6000.00	6025.00	6050.00	6075.00	6100.00	6125.00	6150.00	6175.00	6200.00	6225.00	6250.00
STAKE	C22	C23	C24	H7	C25	NC6	C26	C27	H8	C28	C29	C30	H9C31	C32	GIAO	C33	C34	KM6	C1	C2	C3	H1	C4	C5	C6	H2	C7	C8
GEOMETRY ALIGNMENT																												

PROJECT NAME	CLIENT	COUNTERPART	CONSULTANT	DWG TITLE	DWG No.	
PREPARATORY SURVEY ON TRANSIT ORIENTED DEVELOPMENT (URBAN DEVELOPMENT AROUND PUBLIC TRANSPORT HUB) PROJECT AND BRT DEVELOPMENT PROJECT	JAPAN INTERNATIONAL COOPERATION AGENCY (JICA)	HO CHI MINH CITY PEOPLE'S COMMITTEE DEPARTMENT OF TRANSPORT	BINH DUONG PROVINCE PEOPLE'S COMMITTEE DEPARTMENT OF TRANSPORT	TOKYU CORPORATION NIPPON KOEI CO.,LTD. NIKKEN SEKKEI RESEARCH INSTITUTE KRI INTERNATIONAL CORPORATION	SECTION 2 PLAN AND PROFILE OF MY PHUOC - TAN VAN ROAD (10/35)	SE2 - 11
				SUB-CONSULTANT		SCALE
				HUNG NGHIEP CONSTRUCTION CONSULTING CO., LTD		1/2000



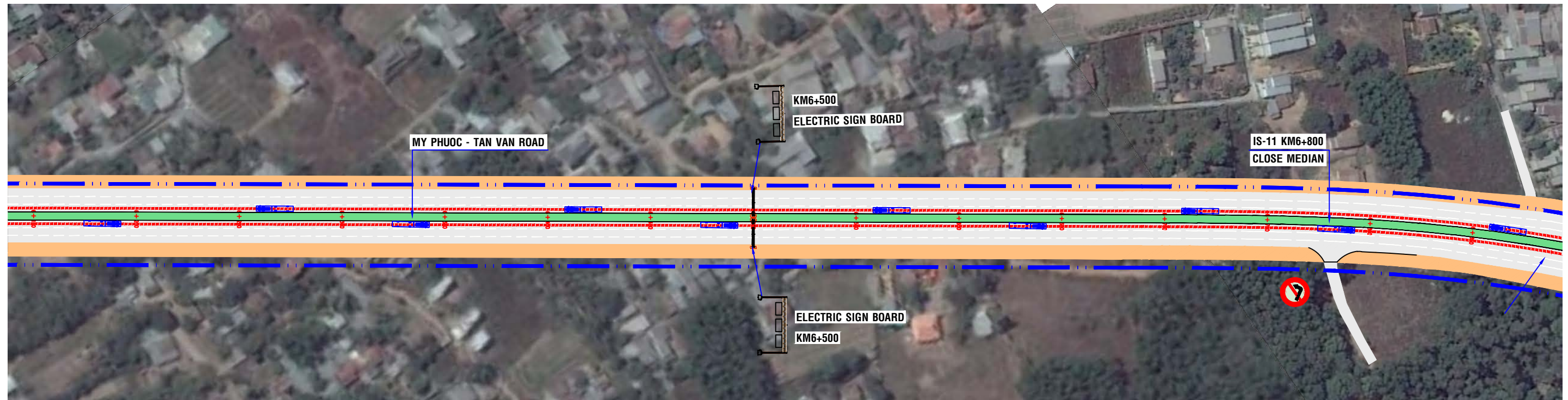
START BEGINNING OF FLYOVER OF DT743

PLAN VIEW OF MY PHUOC - TAN VAN ROAD

SCALE:1/2000



BINH DUONG NEW CITY

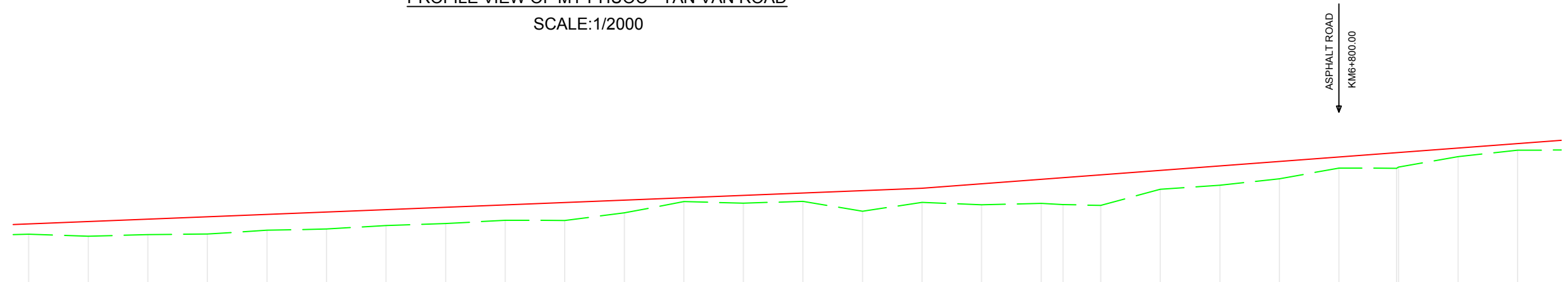


PROFILE VIEW OF MY PHUOC - TAN VAN ROAD

SCALE:1/2000

NOTES/ GHI CHÚ:

- SIDEWALK
- PAVEMENT
- GREEN BELT
- CENTERLINE
- BRT DIRECTION
- ROW
- BUS
- TRAFFIC LIGHT



PROFILE	0.40%															0.75%												
	687.03															327.71												
DESIGN ELEVATION	28.95	29.05	29.15	29.25	29.35	29.45	29.55	29.65	29.75	29.85	29.95	30.05	30.15	30.25	30.35	30.45	30.63	30.82	30.89	31.01	31.20	31.38	31.57	31.76	31.94	32.13	32.32	
EXISTING ELEVATION	28.51	28.43	28.50	28.52	28.68	28.73	28.88	28.96	29.10	29.09	29.41	29.88	29.82	29.89	29.48	29.85	29.75	29.81	29.76	29.89	29.72	30.40	30.57	30.84	31.29	31.80	31.77	32.04
DISTANCE		25.00	25.00	25.00	25.00	25.00	25.00	25.00	25.00	25.00	25.00	25.00	25.00	25.00	25.00	25.00	25.00	9.21	15.79		25.00	25.00	25.00	25.00	24.21	25.00	25.00	
STATION	6250.00	6275.00	6300.00	6325.00	6350.00	6375.00	6400.00	6425.00	6450.00	6475.00	6500.00	6525.00	6550.00	6575.00	6600.00	6625.00	6650.00	6675.00	6684.21	6700.00	6725.00	6750.00	6775.00	6800.00	6825.00	6850.00	6875.00	
STAKE	C8	C9	H3	C10	C11	C12	H4	C13	C14	C15	H5	C16	C17	C18	H6	C19	C20	C21 ND7	H7	C22	C23	C24	H8	C25 TD7	C26	C27		
GEOMETRY ALIGNMENT	<div style="text-align: right;"> A=28d25'42" T=272.88 P=26 R=800 K=536. </div>																											

PROJECT NAME	CLIENT	COUNTERPART	CONSULTANT	DWG TITLE	DWG No.	
PREPARATORY SURVEY ON TRANSIT ORIENTED DEVELOPMENT (URBAN DEVELOPMENT AROUND PUBLIC TRANSPORT HUB) PROJECT AND BRT DEVELOPMENT PROJECT	JAPAN INTERNATIONAL COOPERATION AGENCY (JICA)	HO CHI MINH CITY PEOPLE'S COMMITTEE DEPARTMENT OF TRANSPORT	BINH DUONG PROVINCE PEOPLE'S COMMITTEE DEPARTMENT OF TRANSPORT	TOKYU CORPORATION NIPPON KOEI CO.,LTD. NIKKEN SEKKEI RESEARCH INSTITUTE KRI INTERNATIONAL CORPORATION	SECTION 2 PLAN AND PROFILE OF MY PHUOC - TAN VAN ROAD (11/35)	SE2 - 12
				SUB-CONSULTANT		SCALE
				HUNG NGHIEP CONSTRUCTION CONSULTING CO., LTD		1/2000



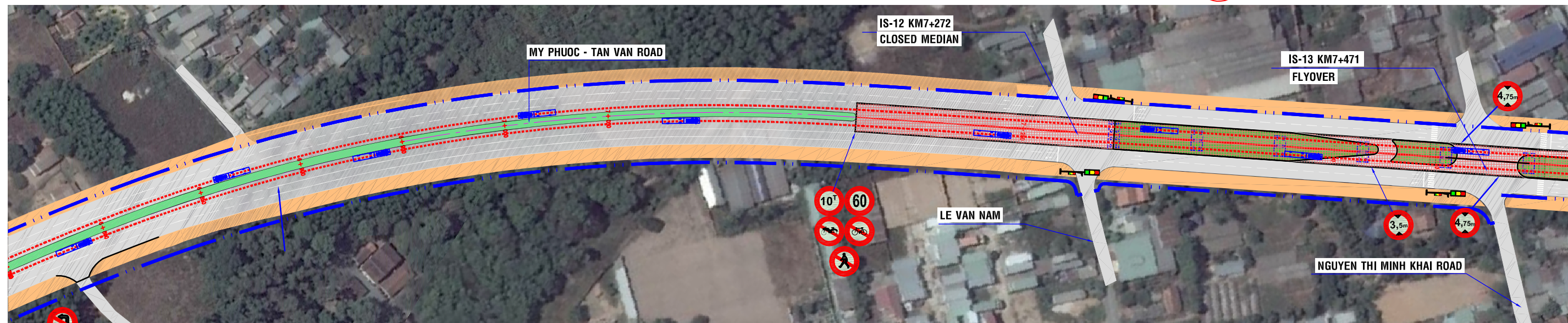
START BEGINNING OF FLYOVER OF DT743

PLAN VIEW OF MY PHUOC - TAN VAN ROAD

SCALE:1/2000



BINH DUONG
NEW CITY



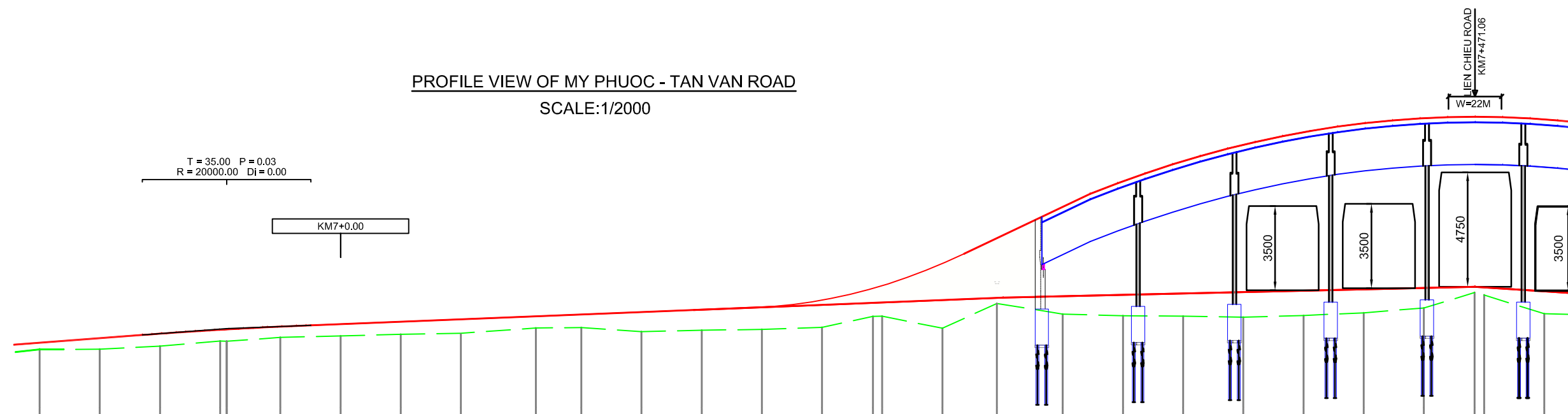
PROFILE VIEW OF MY PHUOC - TAN VAN ROAD

SCALE:1/2000

NOTES/ GHI CHÚ:

- SIDEWALK
- PAVEMENT
- GREEN BELT
- CENTERLINE
- BRT DIRECTION
- ROW
- BUS
- TRAFFIC LIGHT

T = 35.00 P = 0.03
R = 20000.00 DI = 0.00



PROFILE	<div style="display: flex; justify-content: space-between;"> 0.40% 220.00 4.00% 298.65 </div>																											
DESIGN ELEVATION	32.32	32.51	32.69	32.88	32.99	33.09	33.19	33.29	33.42	33.49	33.59	33.69	33.79	34.08	34.57	34.69	35.61	36.66	37.96	39.02	39.86	40.64	41.06	41.43	41.64	41.7	41.7	41.59
EXISTING ELEVATION	32.04	32.05	32.18	32.38	32.54	32.60	32.67	32.71	32.93	32.95	32.78	32.84	32.87	32.96	33.41	33.42	32.92	33.95	33.51	33.44	33.42	33.38	33.45	33.56	33.76	34.40	34.30	33.52
DISTANCE		25.00	25.00	25.00	22.32	25.00	25.00	25.00	31.15	18.85	25.00	25.00	25.00	21.15	3.85	25.00	22.65	27.35	25.00	25.00	25.00	25.00	25.00	25.00	21.06	3.84	25.00	25.00
STATION	6875.00	6900.00	6925.00	6950.00	6975.00	7000.00	7025.00	7050.00	7081.15	7100.00	7125.00	7150.00	7175.00	7200.00	7221.15	7225.00	7250.00	7272.65	7300.00	7325.00	7350.00	7375.00	7400.00	7425.00	7450.00	7471.06	7475.00	7500.00
STAKE	C27	H9	C28	P7 C29	C30	KM7	C1	C2	TC7	H1	C4	C5	C6	H2	NC7	C8	C9	H3	C10	C11	C12	H4	C13	C14	GIAO C15	H5		
GEOMETRY ALIGNMENT	A=28d25'42" T=272.88 P=26.32 R=800 K=536.93										L1=140.00 L2=140.00 isc1=2.00 w1=0.00 isc2=2.00 w2=0.00																	

PROJECT NAME	CLIENT	COUNTERPART	CONSULTANT	DWG TITLE	DWG No.	
PREPARATORY SURVEY ON TRANSIT ORIENTED DEVELOPMENT (URBAN DEVELOPMENT AROUND PUBLIC TRANSPORT HUB) PROJECT AND BRT DEVELOPMENT PROJECT	JAPAN INTERNATIONAL COOPERATION AGENCY (JICA)	HO CHI MINH CITY PEOPLE'S COMMITTEE DEPARTMENT OF TRANSPORT	BINH DUONG PROVINCE PEOPLE'S COMMITTEE DEPARTMENT OF TRANSPORT	TOKYU CORPORATION NIPPON KOEI CO.,LTD. NIKKEN SEKKEI RESEARCH INSTITUTE KRI INTERNATIONAL CORPORATION	SECTION 2 PLAN AND PROFILE OF MY PHUOC - TAN VAN ROAD (12/35)	SE2 - 13
				SUB-CONSULTANT		SCALE
				HUNG NGHIEP CONSTRUCTION CONSULTING CO., LTD		1/2000