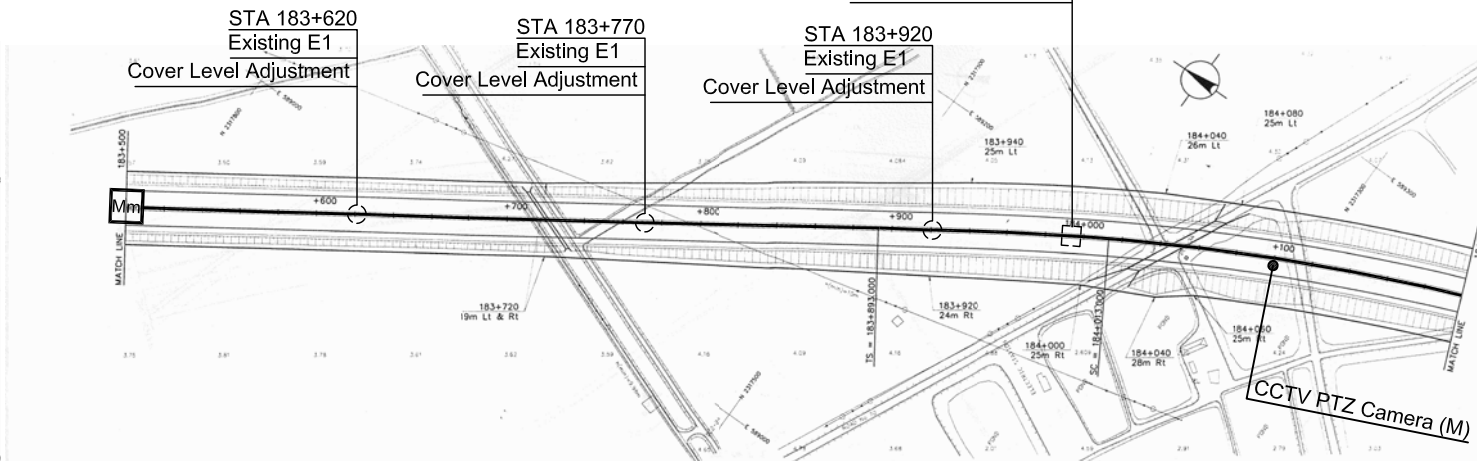
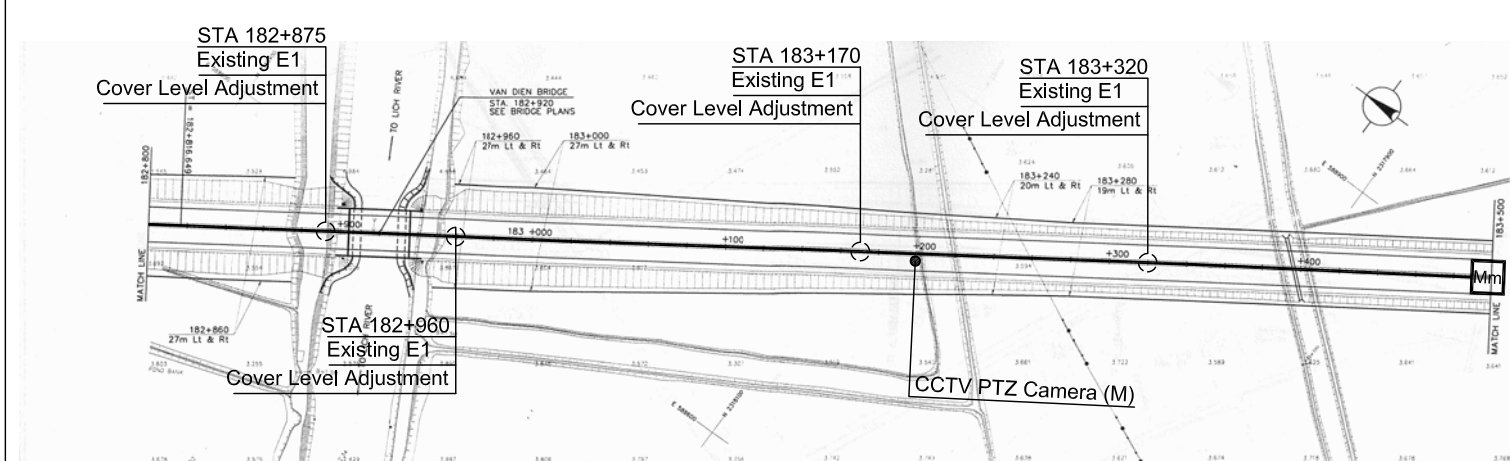
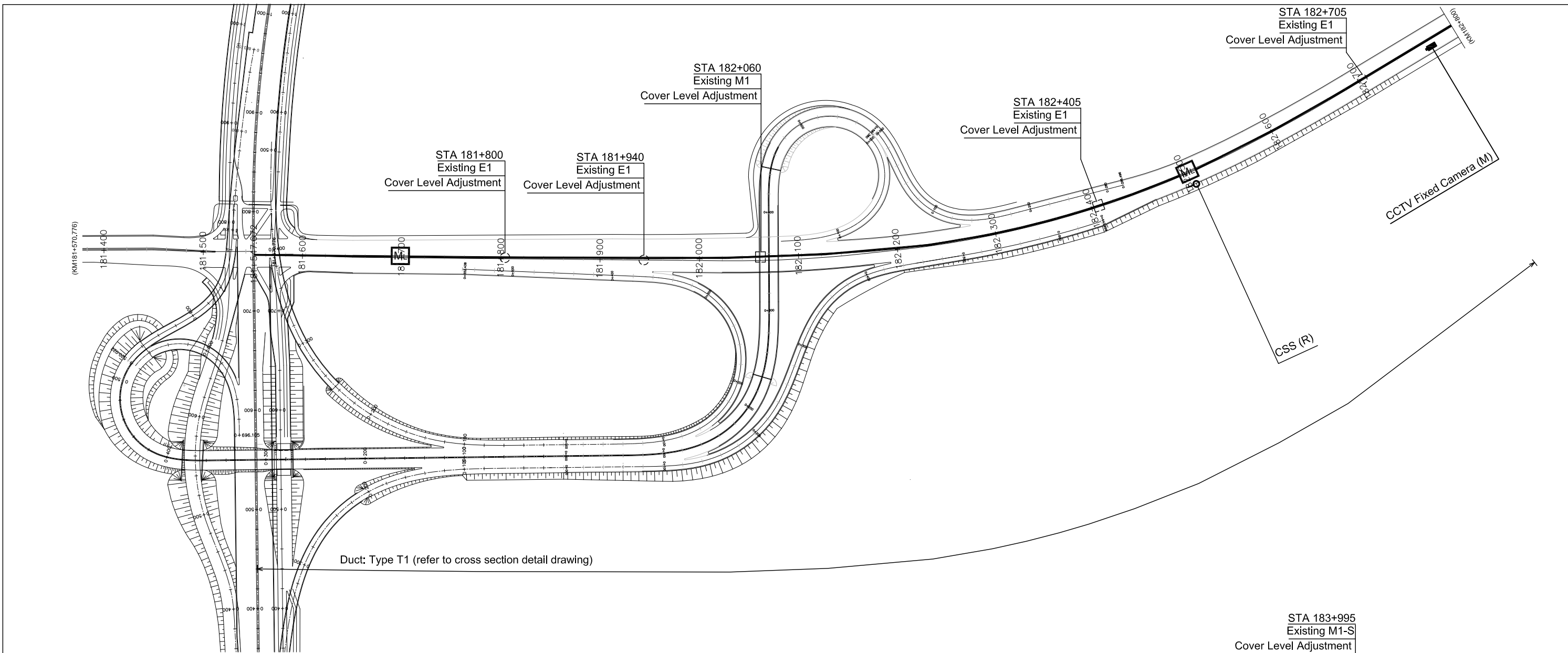
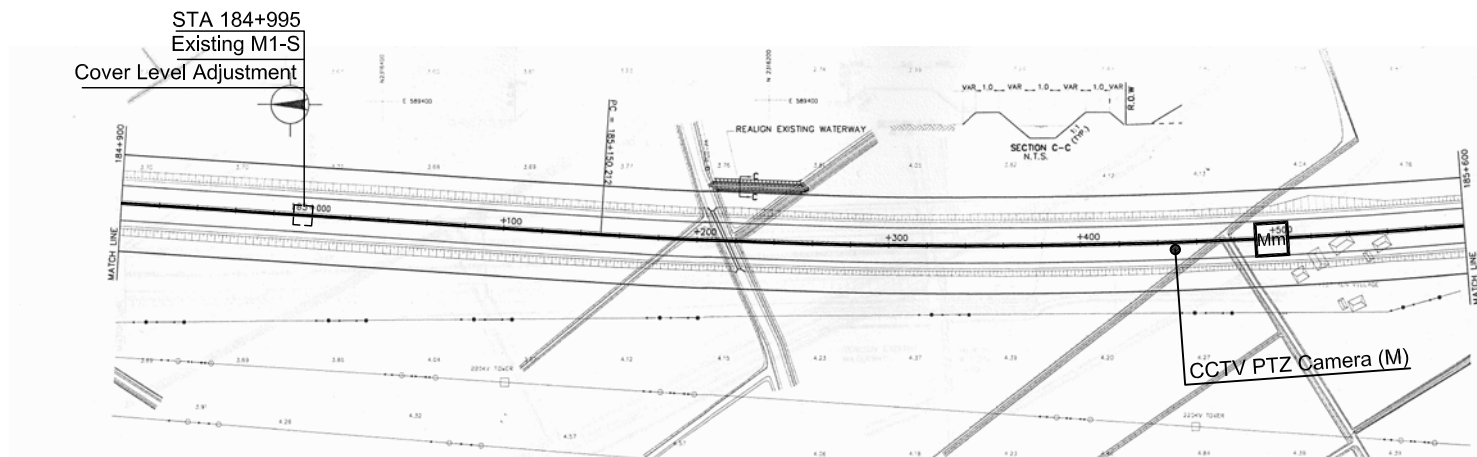
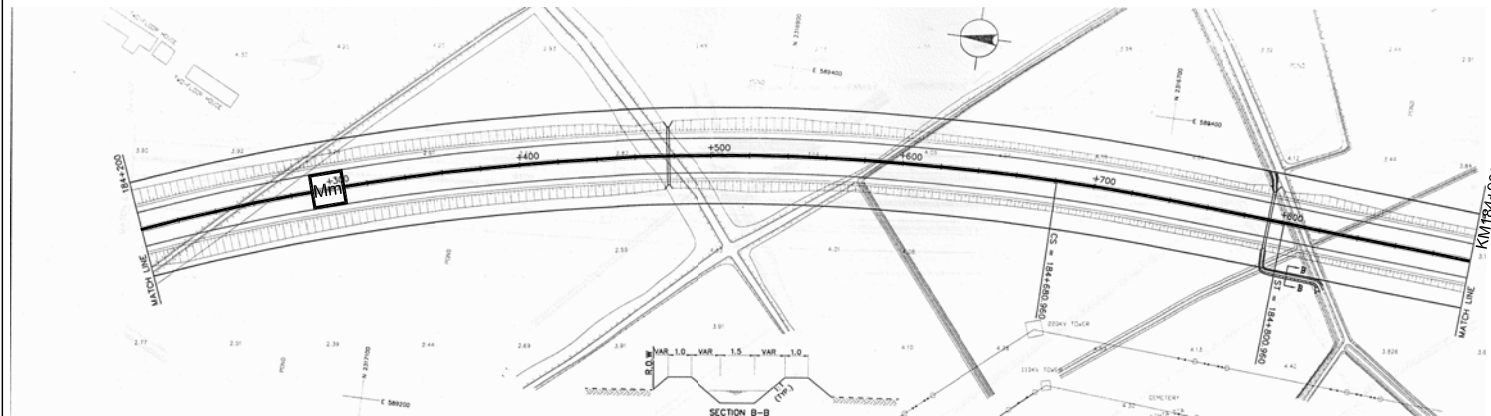


PHAP VAN - GIE EXPRESSWAY
(FOR REFERENCE)



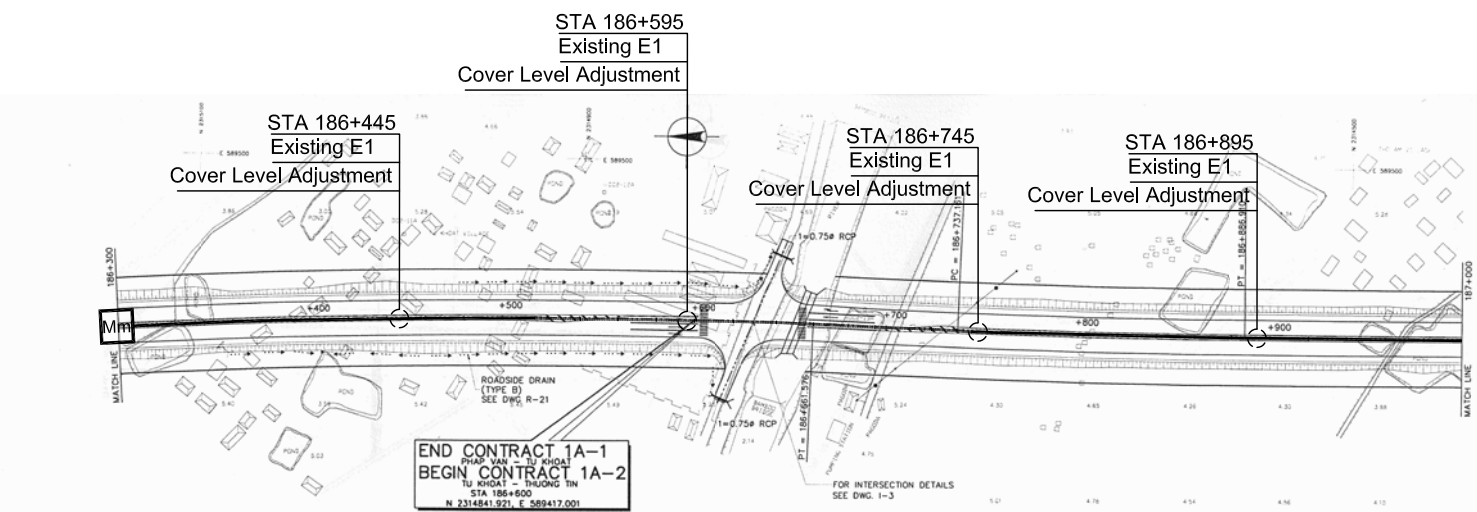
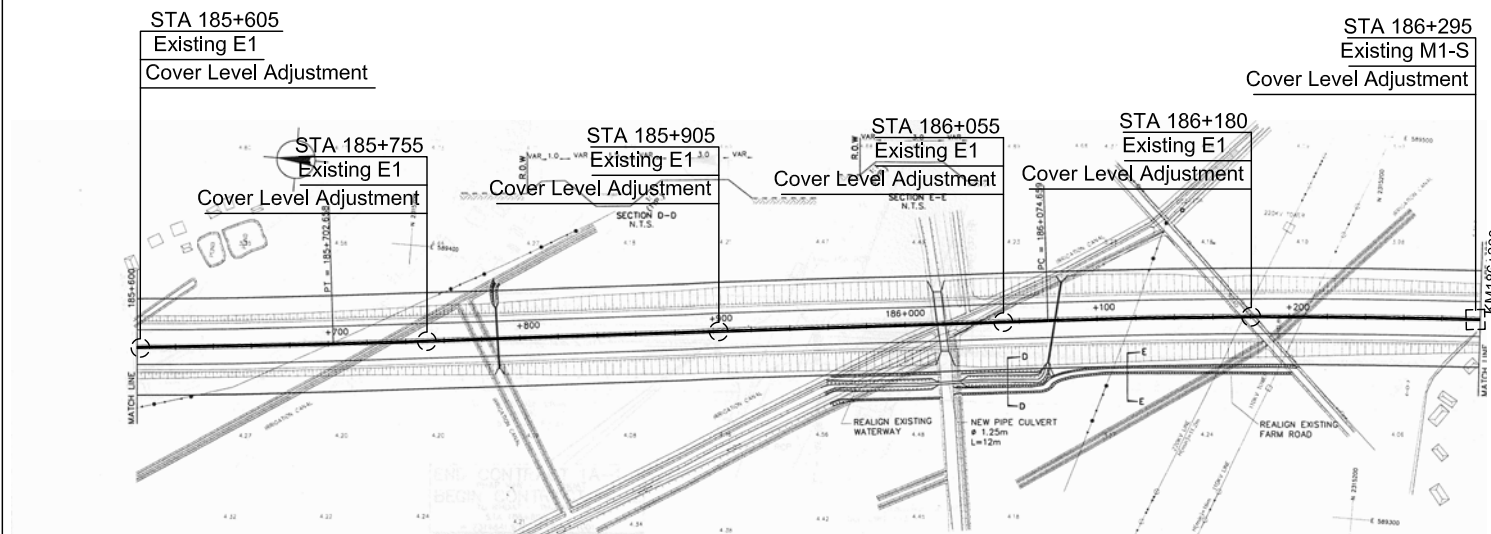
Notes:
 CLA: Cover Level Adjustment Work for Existing Cable Chamber

CONSULTANT					SOCIALIST REPUBLIC OF VIETNAM					ITS INTEGRATION PROJECT IN NORTHERN AREA OF VIETNAM			PACKAGE:			
ORIENTAL CONSULTANTS GLOBAL CO., LTD METROPOLITAN EXPRESSWAY CO., LTD NEXCO EAST ENGINEERING CO., LTD TRANSPORTATION RESEARCH INSTITUTE CO., LTD ABEAM CONSULTING LTD.					TITLE	NAME	SIGNATURE	DATE	MINISTRY OF TRANSPORT					DRAWING TITLE:		
					PREPARED BY									LAYOUT PLAN OF ROADSIDE EQUIPMENT & COMMUNICATION		
					CHECKED BY									DUCT (KM 181+570.776 ~ KM 184+200, PHAP VAN- GIE EXP.)		
					APPROVED BY									SCALE: 1/4000		
										DRAWING No.:		VI.1-01				
										SHEET No.:		Sheet of				



Duct: Type T1 (refer to cross section detail drawing)

Duct: Type T1 (refer to cross section detail drawing)

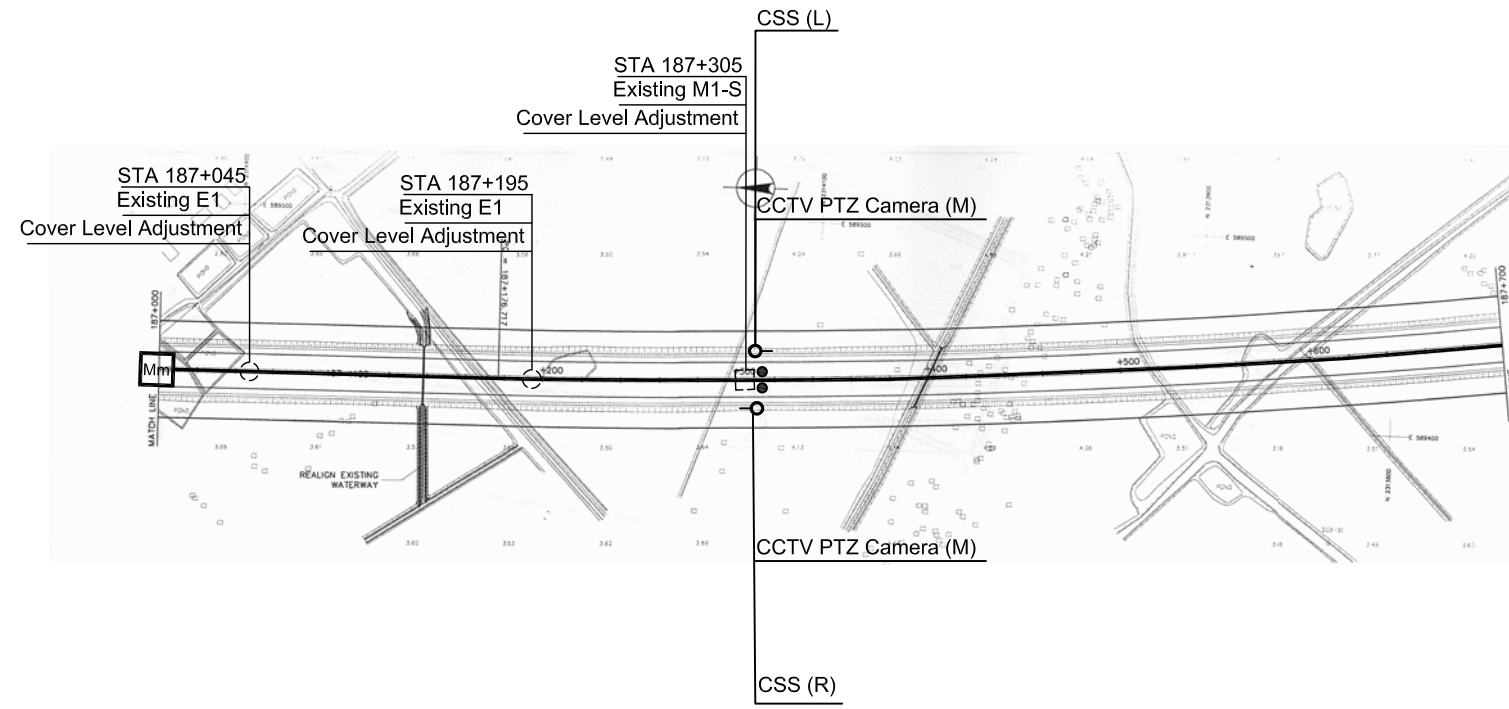


Duct: Type T1 (refer to cross section detail drawing)

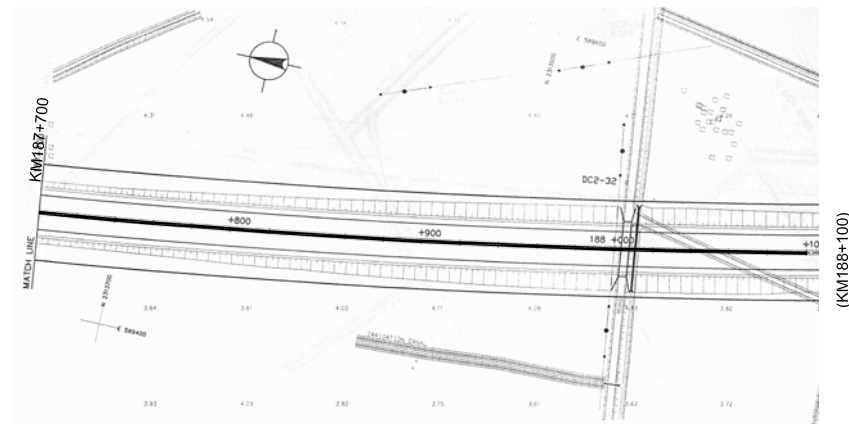
Duct: Type T1 (refer to cross section detail drawing)

Notes:
CLA: Cover Level Adjustment Work for Existing Cable Chamber

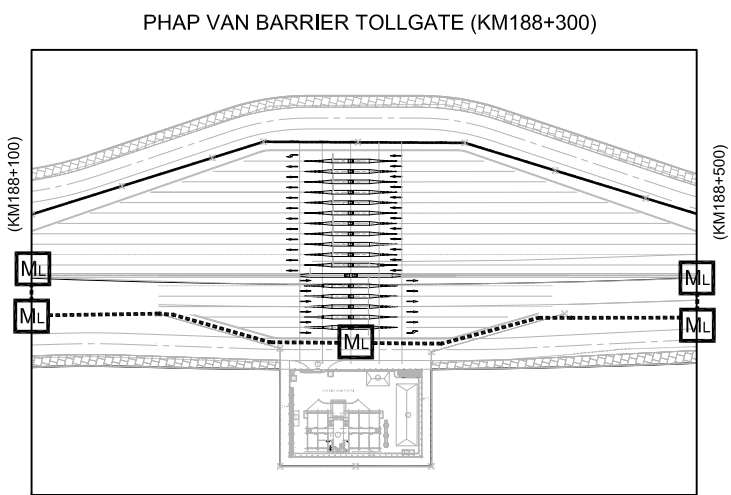
CONSULTANT					SOCIALIST REPUBLIC OF VIETNAM			ITS INTEGRATION PROJECT IN NORTHERN AREA OF VIETNAM		PACKAGE:	
ORIENTAL CONSULTANTS GLOBAL CO., LTD METROPOLITAN EXPRESSWAY CO., LTD NEXCO EAST ENGINEERING CO., LTD TRANSPORTATION RESEARCH INSTITUTE CO., LTD ABEAM CONSULTING LTD.	TITLE	NAME	SIGNATURE	DATE	MINISTRY OF TRANSPORT			DRAWING TITLE:		DRAWING No.:	
	PREPARED BY							LAYOUT PLAN OF ROADSIDE EQUIPMENT & COMMUNICATION DUCT (KM 184+200 ~ KM 187+000, PHAP VAN- GIE EXP.)		VI.1-02	
	CHECKED BY							SCALE: 1/4000		SHEET No.:	Rev:
	APPROVED BY							Sheet of			



← Duct: Type T1 (refer to cross section detail drawing) →



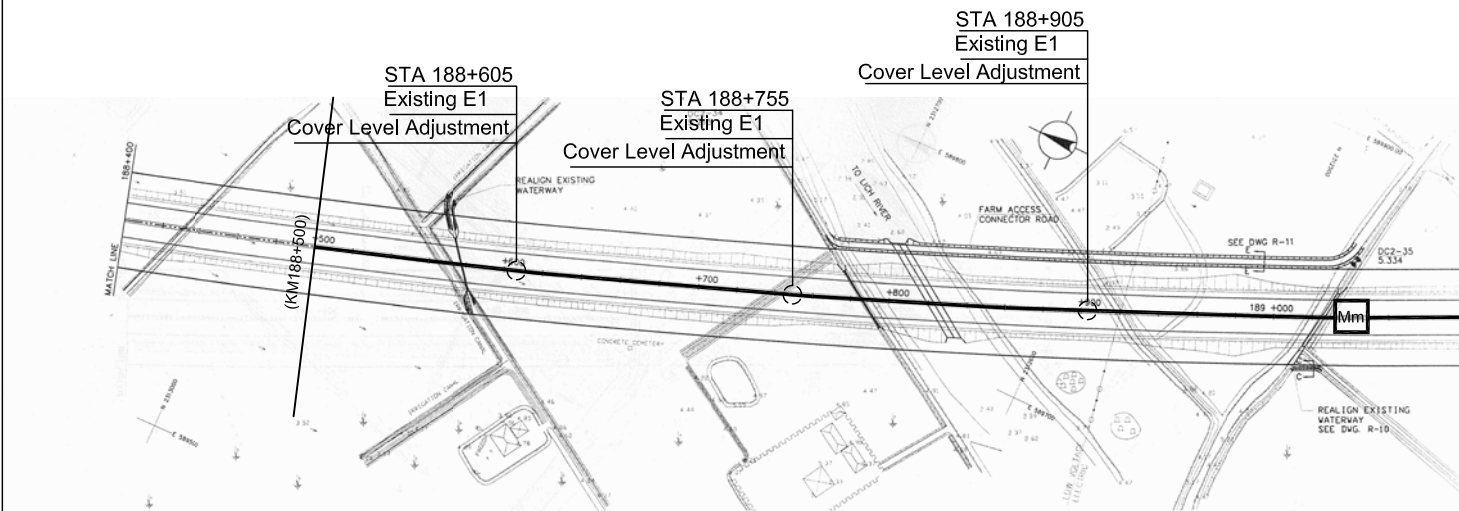
← Duct: Type T1 (refer to cross section detail drawing) →



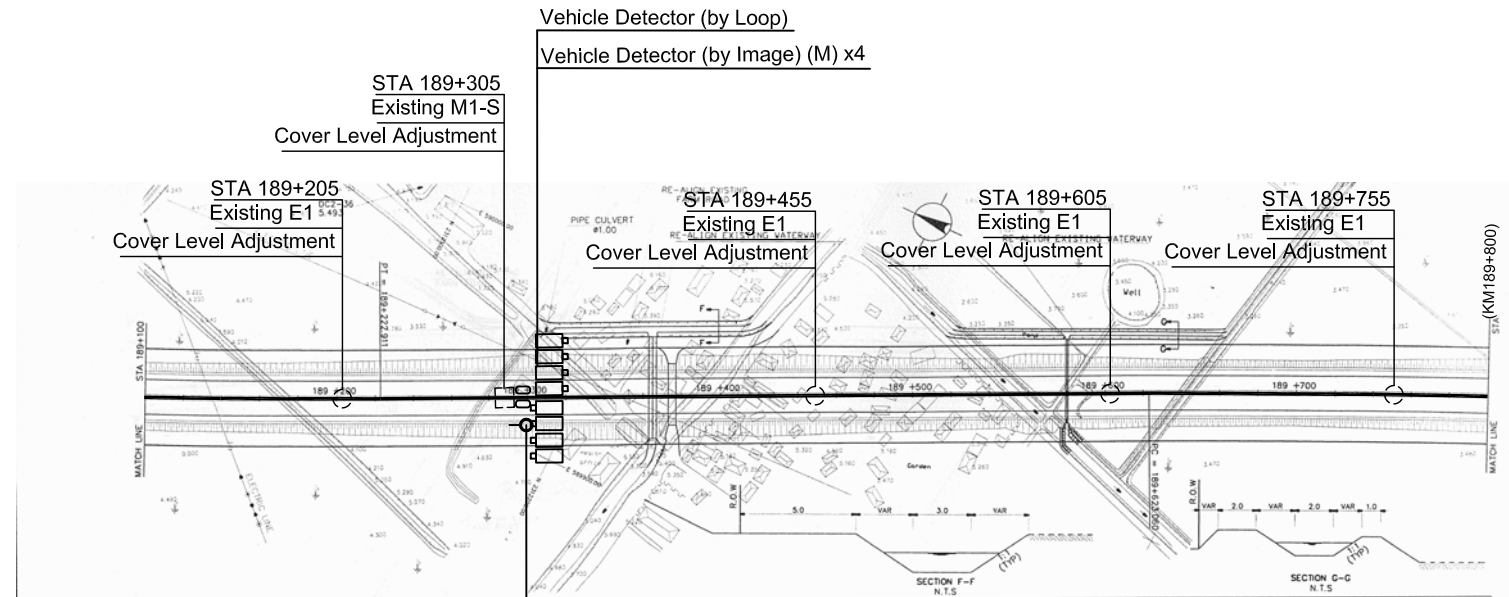
← Duct: Type T1 (refer to cross section detail drawing) →

Notes:
CLA: Cover Level Adjustment Work for Existing Cable Chamber

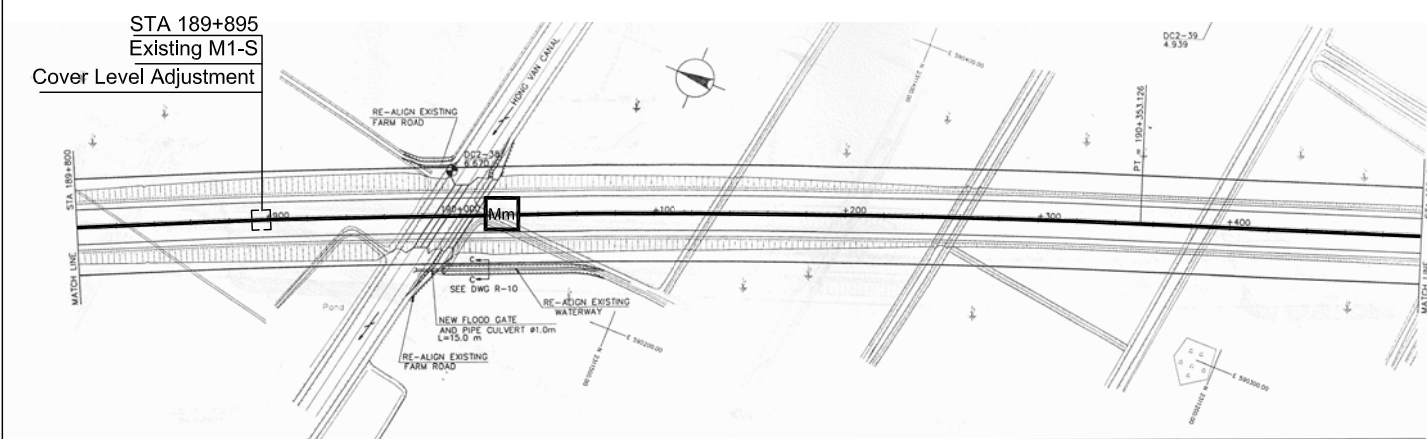
CONSULTANT					SOCIALIST REPUBLIC OF VIETNAM					ITS INTEGRATION PROJECT IN NORTHERN AREA OF VIETNAM		PACKAGE:	
ORIENTAL CONSULTANTS GLOBAL CO., LTD METROPOLITAN EXPRESSWAY CO., LTD NEXCO EAST ENGINEERING CO., LTD TRANSPORTATION RESEARCH INSTITUTE CO., LTD ABEAM CONSULTING LTD.	TITLE	NAME	SIGNATURE	DATE	MINISTRY OF TRANSPORT					DRAWING TITLE:		DRAWING No.:	
	PREPARED BY									LAYOUT PLAN OF ROADSIDE EQUIPMENT & COMMUNICATION DUCT (KM 187+000 ~ KM 188+500, PHAP VAN- GIE EXP.)		VI.1-03	
	CHECKED BY									SCALE: 1/4000		SHEET No.:	Rev:
	APPROVED BY									Sheet	of		



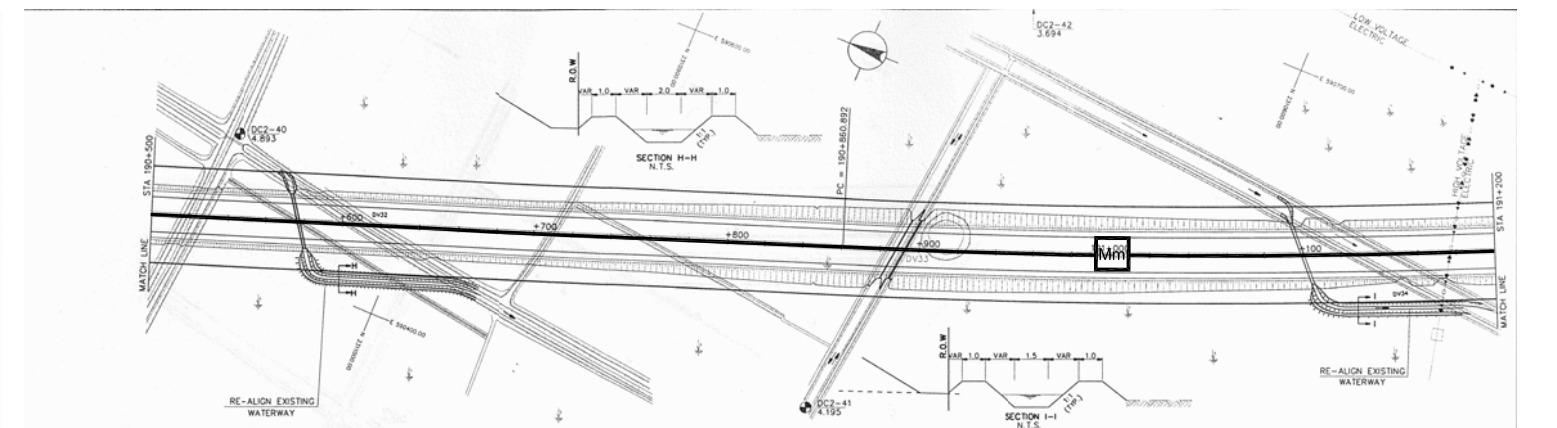
Duct: Type T1 (refer to cross section detail drawing)



Duct: Type T1 (refer to cross section detail drawing)



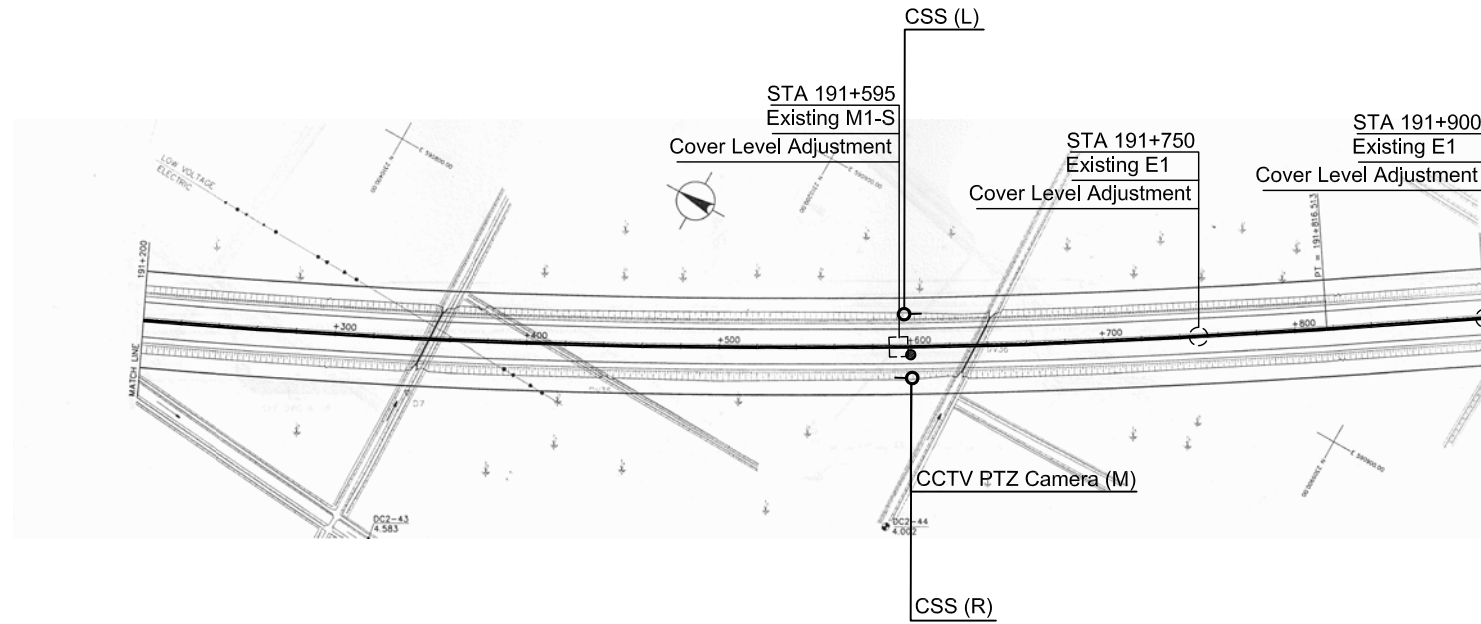
Duct: Type T1 (refer to cross section detail drawing)



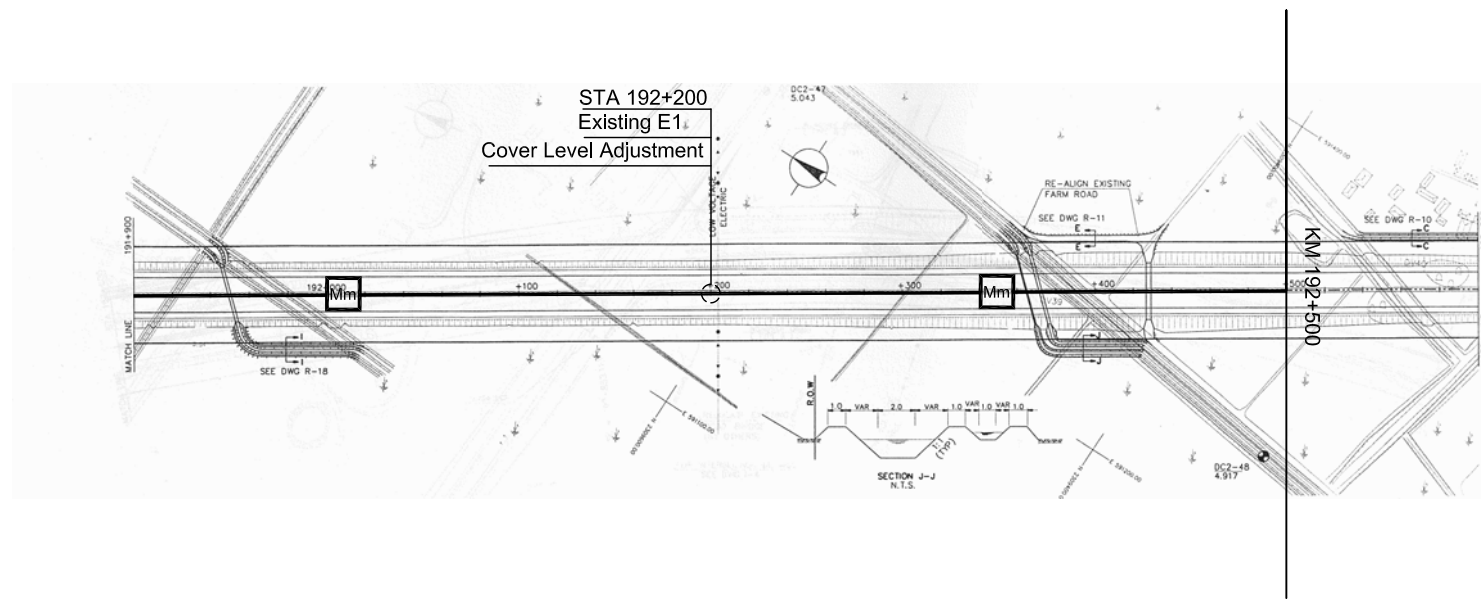
Duct: Type T1 (refer to cross section detail drawing)

Notes:
CLA: Cover Level Adjustment Work for Existing Cable Chamber

CONSULTANT					SOCIALIST REPUBLIC OF VIETNAM					ITS INTEGRATION PROJECT IN NORTHERN AREA OF VIETNAM			PACKAGE:			
ORIENTAL CONSULTANTS GLOBAL CO., LTD METROPOLITAN EXPRESSWAY CO., LTD NEXCO EAST ENGINEERING CO., LTD TRANSPORTATION RESEARCH INSTITUTE CO., LTD ABEAM CONSULTING LTD.					TITLE	NAME	SIGNATURE	DATE	MINISTRY OF TRANSPORT					DRAWING TITLE:		
					PREPARED BY									LAYOUT PLAN OF ROADSIDE EQUIPMENT & COMMUNICATION DUCT (KM 188+500 ~ KM 191+200, PHAP VAN- GIE EXP.)		
					CHECKED BY									SCALE: 1/4000		
APPROVED BY												DRAWING No.:				
												VI.1-04				
												SHEET No.:				
												Sheet of				
												Rev:				



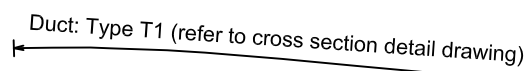
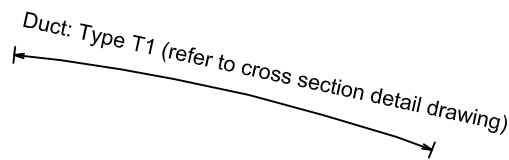
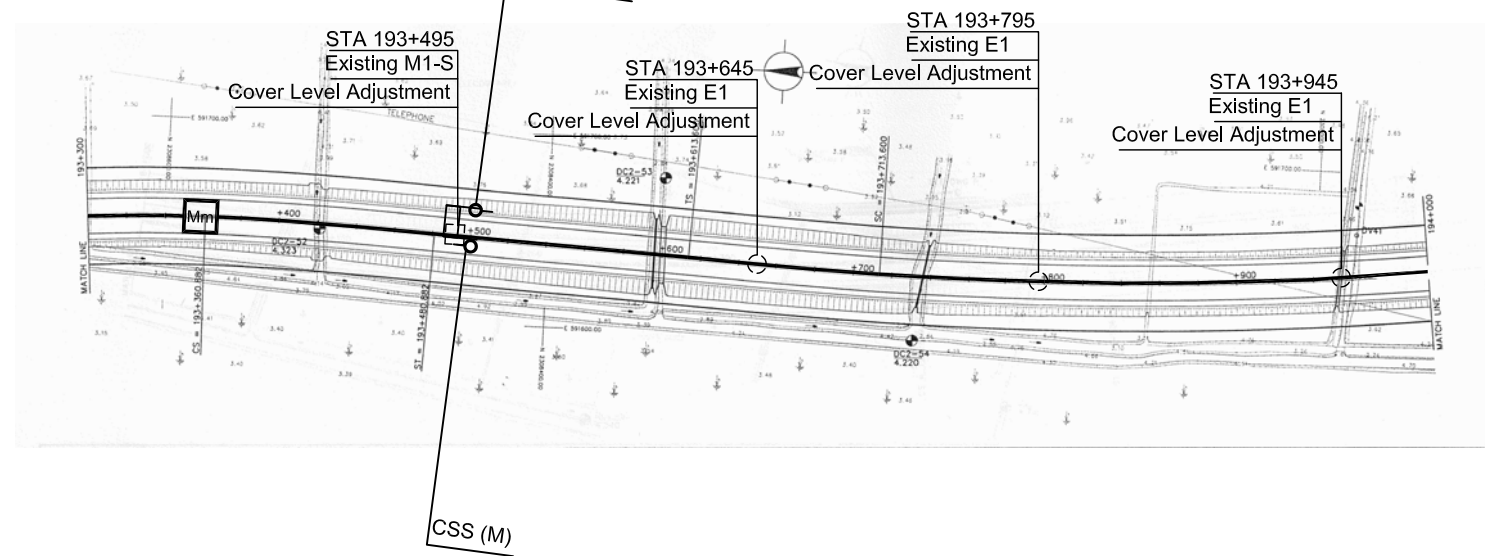
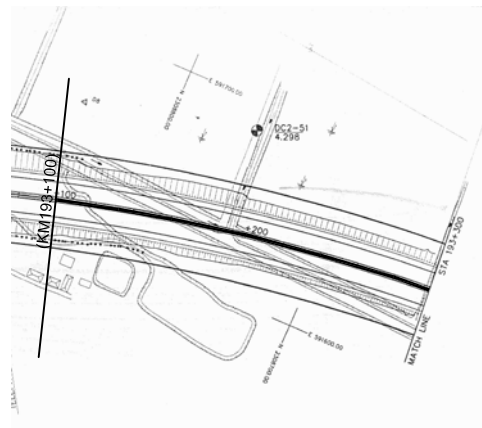
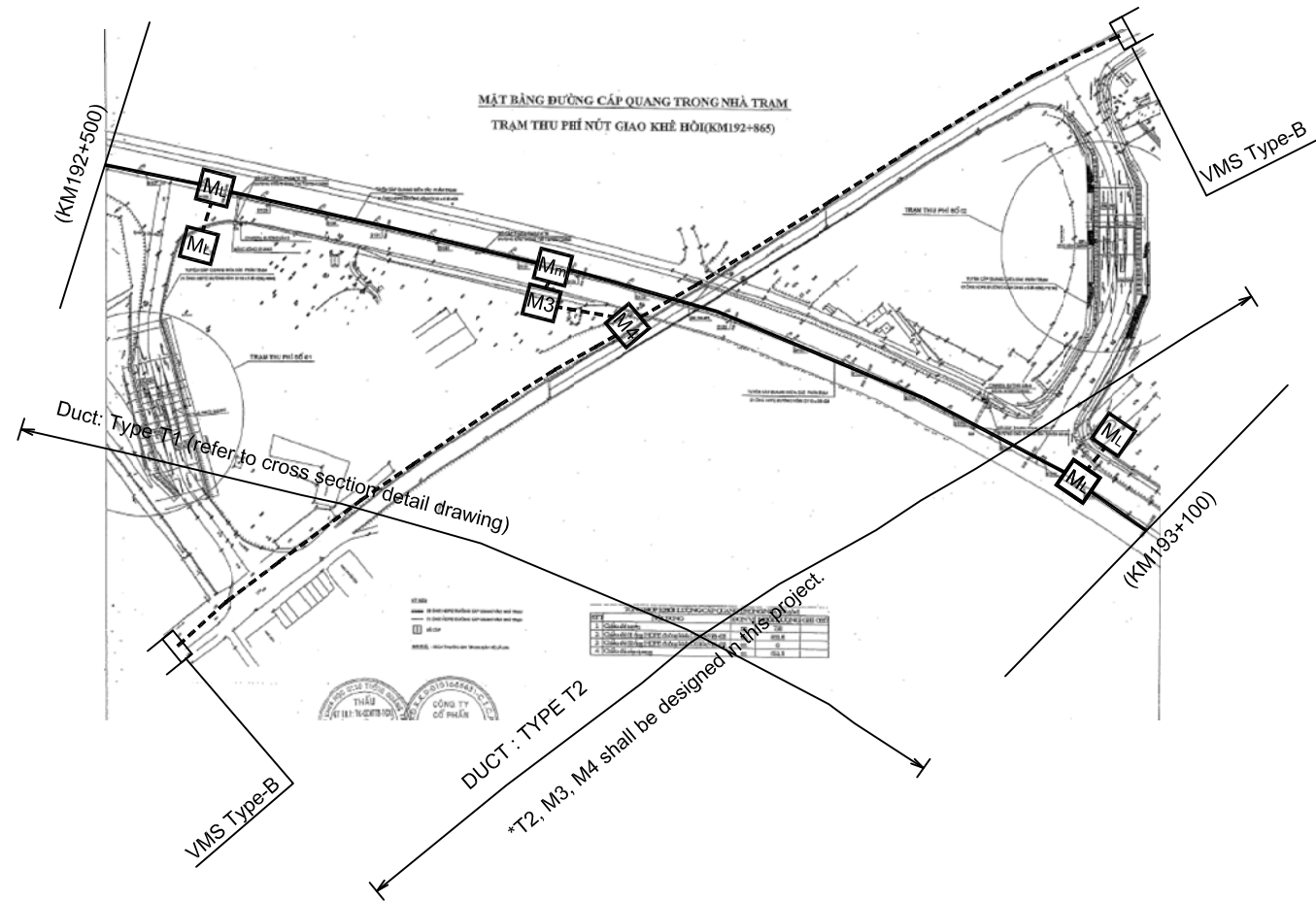
Duct: Type T1 (refer to cross section detail drawing)



Duct: Type T1 (refer to cross section detail drawing)

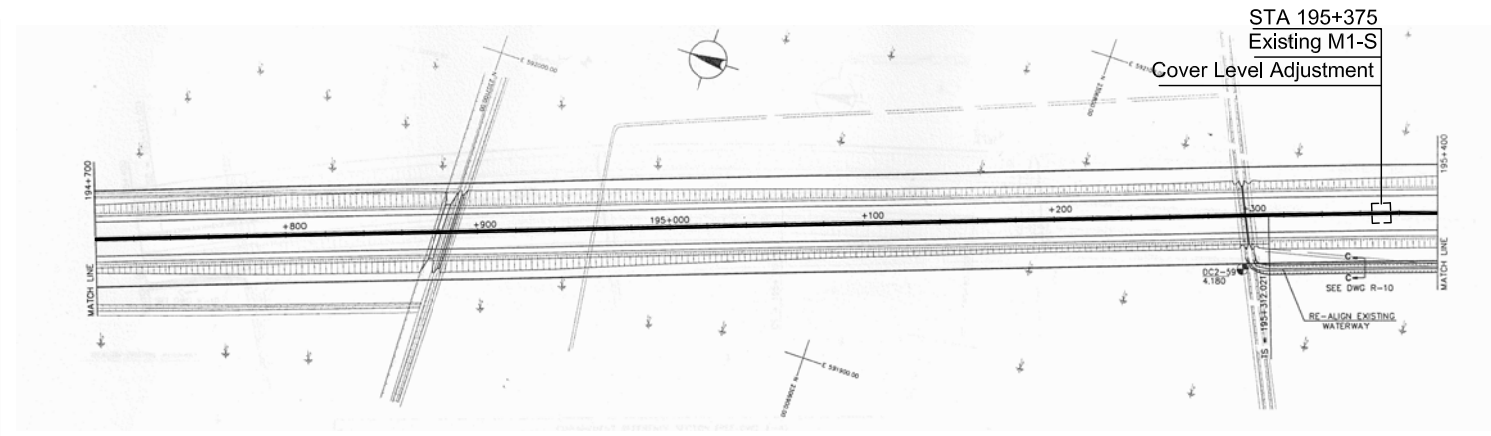
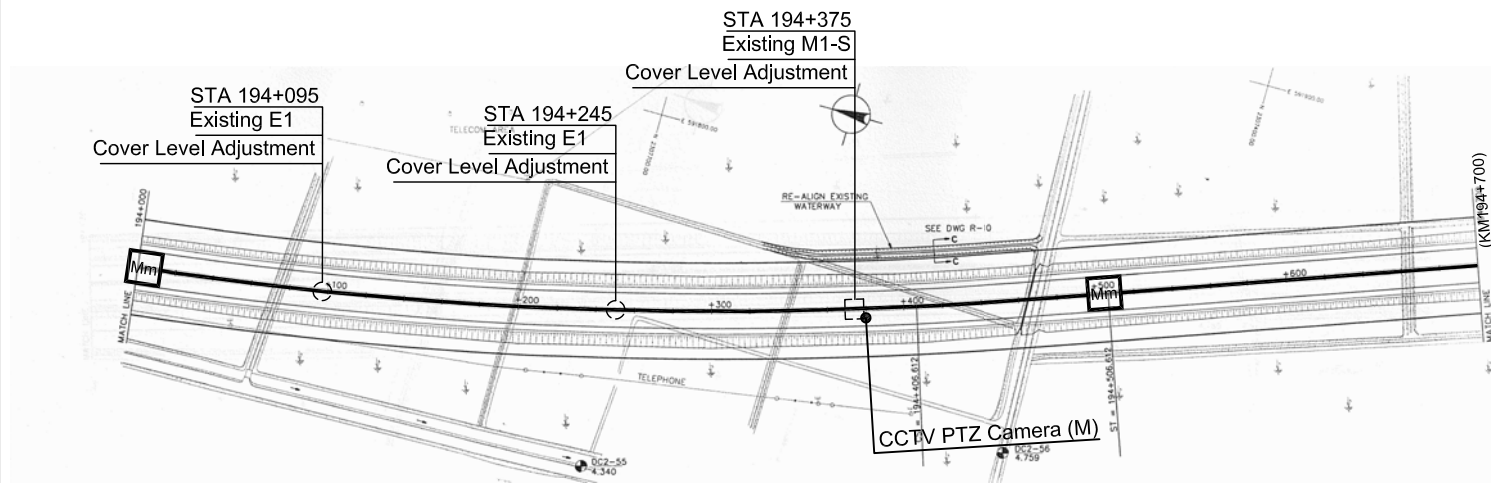
Notes:
CLA: Cover Level Adjustment Work for Existing Cable Chamber

CONSULTANT					SOCIALIST REPUBLIC OF VIETNAM			ITS INTEGRATION PROJECT IN NORTHERN AREA OF VIETNAM		PACKAGE:	
ORIENTAL CONSULTANTS GLOBAL CO., LTD METROPOLITAN EXPRESSWAY CO., LTD NEXCO EAST ENGINEERING CO., LTD TRANSPORTATION RESEARCH INSTITUTE CO., LTD ABEAM CONSULTING LTD.	TITLE	NAME	SIGNATURE	DATE	MINISTRY OF TRANSPORT			DRAWING TITLE: LAYOUT PLAN OF ROADSIDE EQUIPMENT & COMMUNICATION DUCT (KM 191+200 ~ KM 192+500, PHAP VAN- GIE EXP.)		DRAWING No.:	
	PREPARED BY							VI.1-05		SHEET No.:	Rev:
	CHECKED BY							SCALE: 1/4000		Sheet	of
	APPROVED BY										



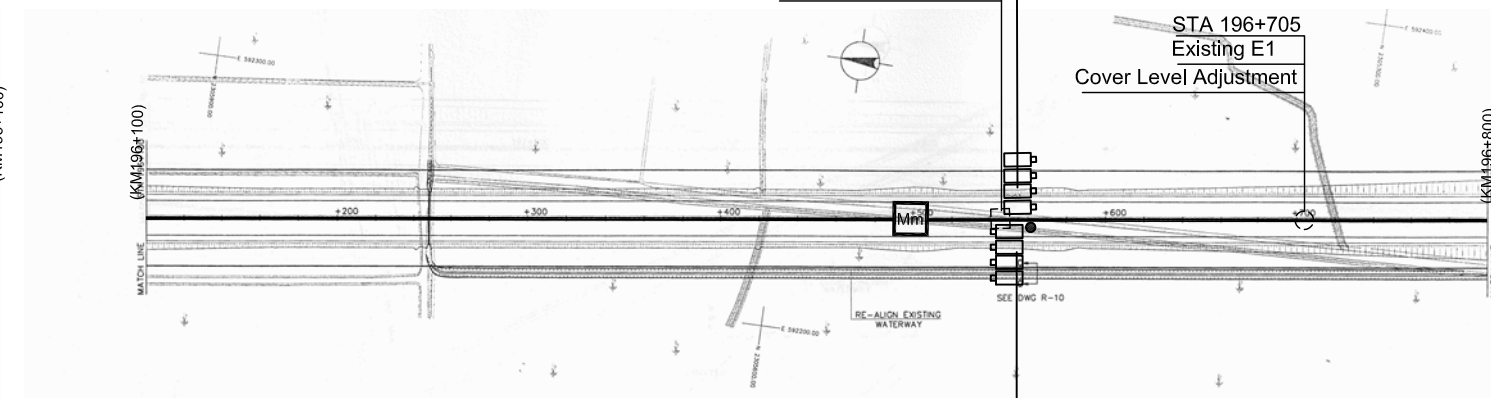
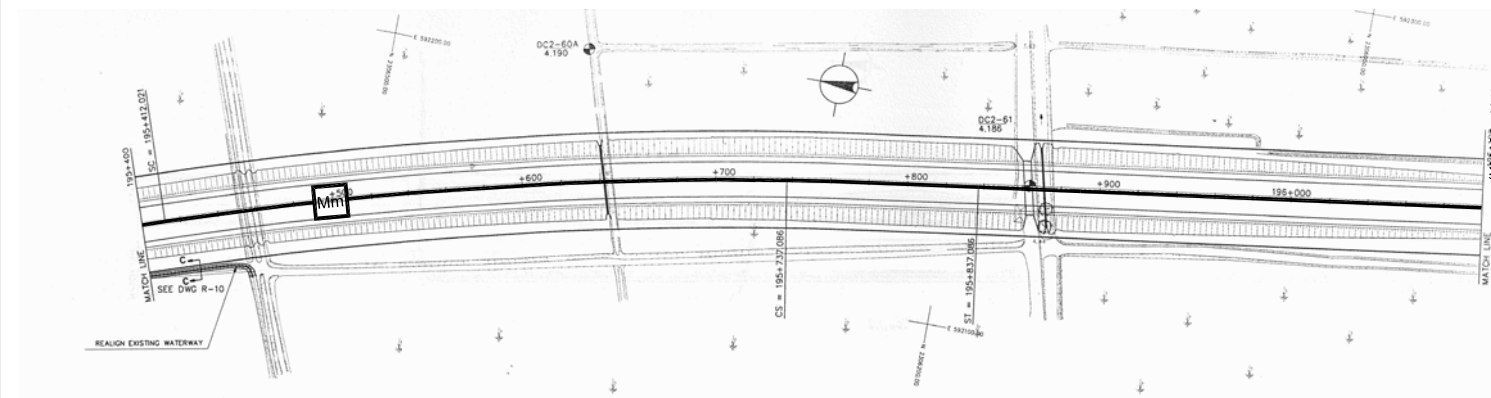
Notes:
CLA: Cover Level Adjustment Work for Existing Cable Chamber

CONSULTANT					SOCIALIST REPUBLIC OF VIETNAM					ITS INTEGRATION PROJECT IN NORTHERN AREA OF VIETNAM		PACKAGE:	
ORIENTAL CONSULTANTS GLOBAL CO., LTD METROPOLITAN EXPRESSWAY CO., LTD NEXCO EAST ENGINEERING CO., LTD TRANSPORTATION RESEARCH INSTITUTE CO., LTD ABEAM CONSULTING LTD.	TITLE	NAME	SIGNATURE	DATE	MINISTRY OF TRANSPORT					DRAWING TITLE:		DRAWING No.:	
	PREPARED BY									LAYOUT PLAN OF ROADSIDE EQUIPMENT & COMMUNICATION DUCT (KM 192+500 ~ KM 194+000, PHAP VAN- GIE EXP.)		VI.1-06	
	CHECKED BY									SCALE: 1/4000		SHEET No.:	Rev:
	APPROVED BY											Sheet	of



Duct: Type T1 (refer to cross section detail drawing)

Duct: Type T1 (refer to cross section detail drawing)

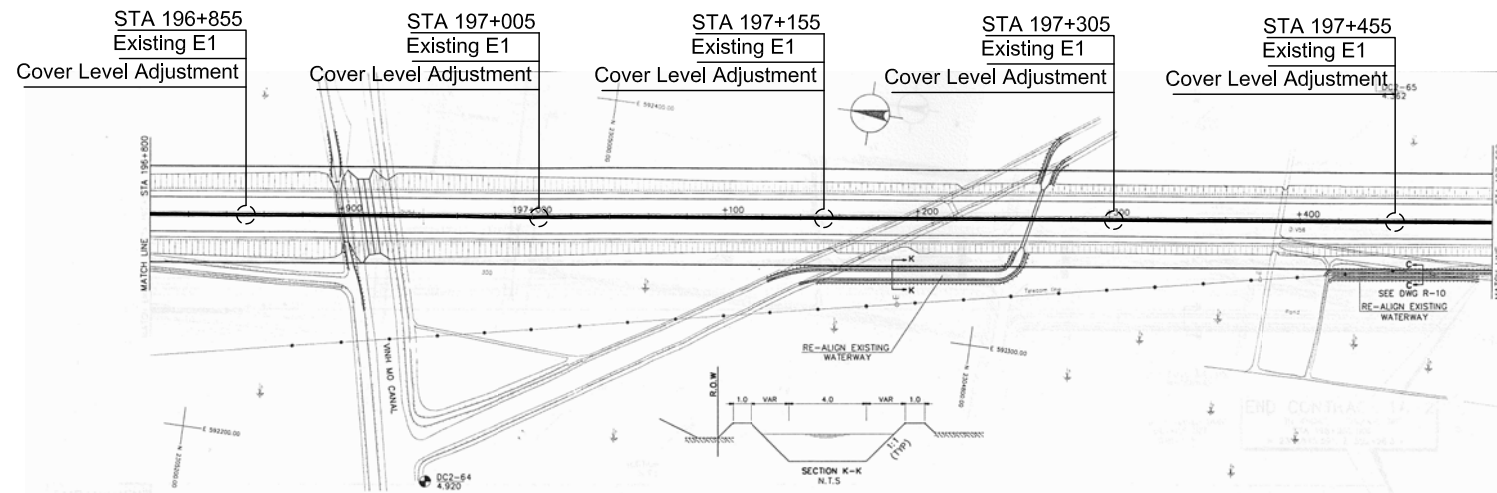


Duct: Type T1 (refer to cross section detail drawing)

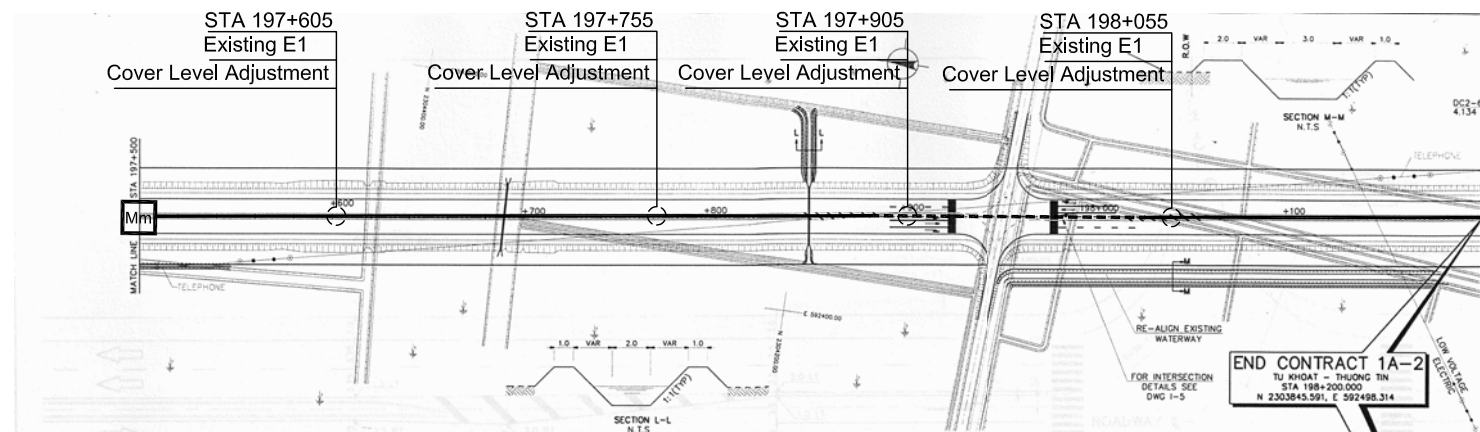
Duct: Type T1 (refer to cross section detail drawing)

Notes:
CLA: Cover Level Adjustment Work for Existing Cable Chamber

CONSULTANT					SOCIALIST REPUBLIC OF VIETNAM			ITS INTEGRATION PROJECT IN NORTHERN AREA OF VIETNAM		PACKAGE:	
ORIENTAL CONSULTANTS GLOBAL CO., LTD METROPOLITAN EXPRESSWAY CO., LTD NEXCO EAST ENGINEERING CO., LTD TRANSPORTATION RESEARCH INSTITUTE CO., LTD ABEAM CONSULTING LTD.	TITLE	NAME	SIGNATURE	DATE	MINISTRY OF TRANSPORT			DRAWING TITLE:		DRAWING No.:	
	PREPARED BY							LAYOUT PLAN OF ROADSIDE EQUIPMENT & COMMUNICATION DUCT (KM 194+000 ~ KM 196+800, PHAP VAN- GIE EXP.)		VI.1-07	
	CHECKED BY							SCALE: 1/4000		SHEET No.:	Rev:
	APPROVED BY							Sheet of			



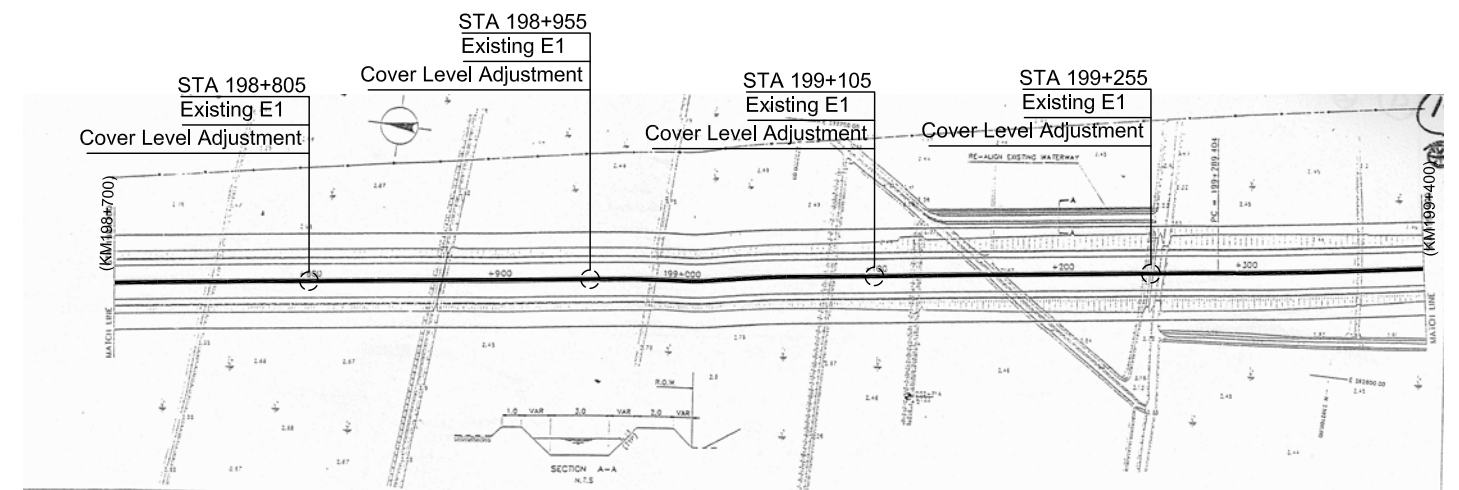
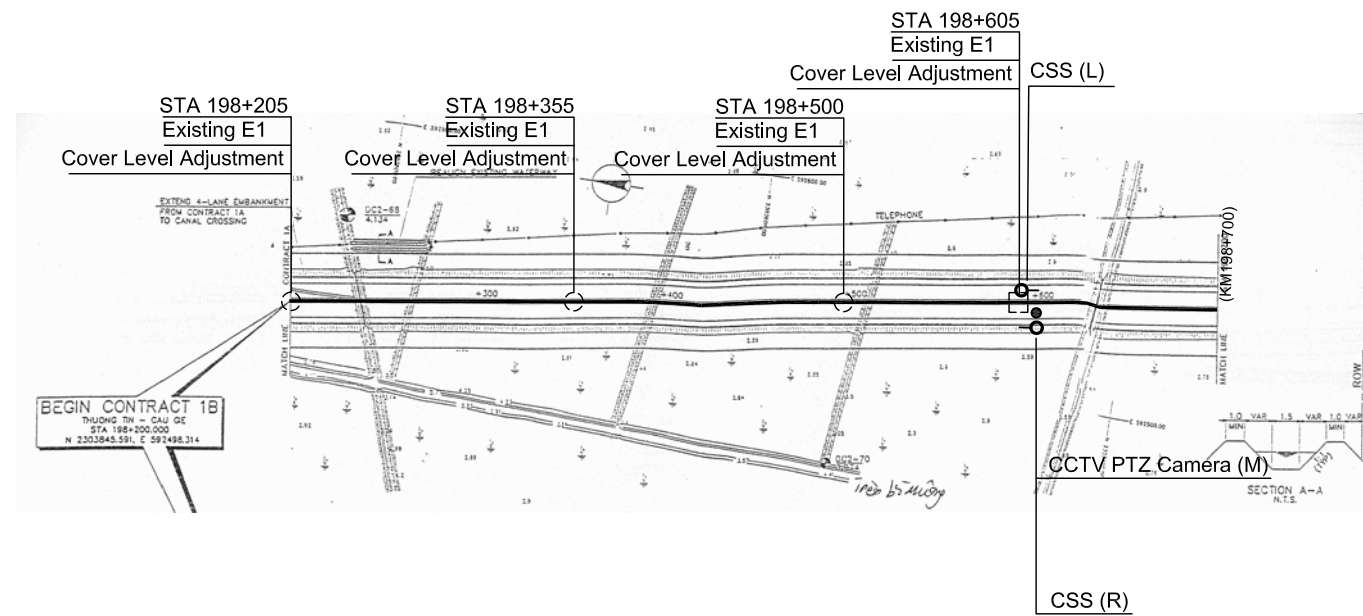
Duct: Type T1 (refer to cross section detail drawing)



Duct: Type T1 (refer to cross section detail drawing)

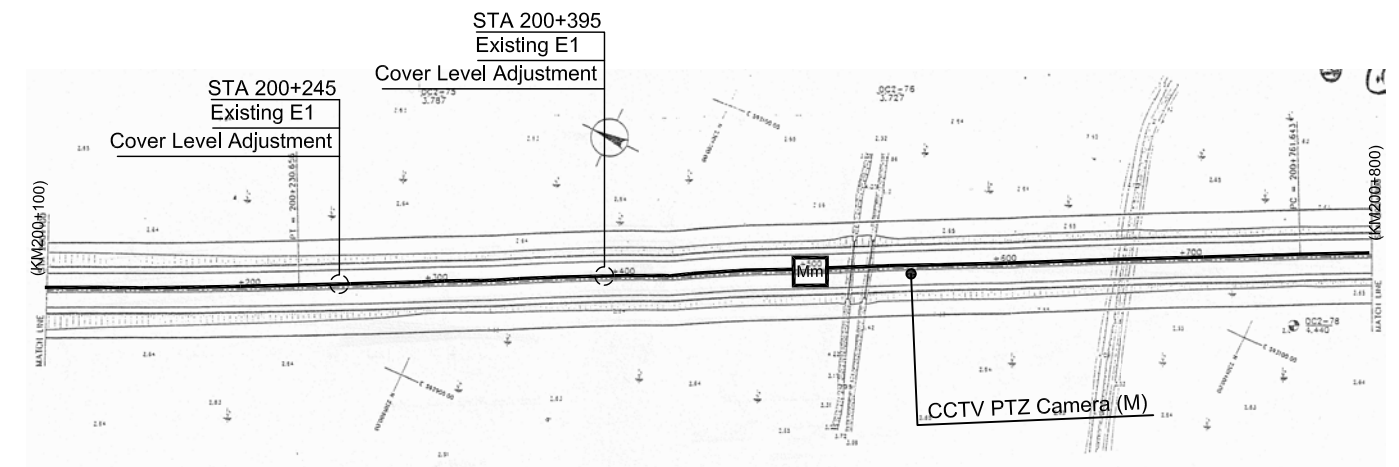
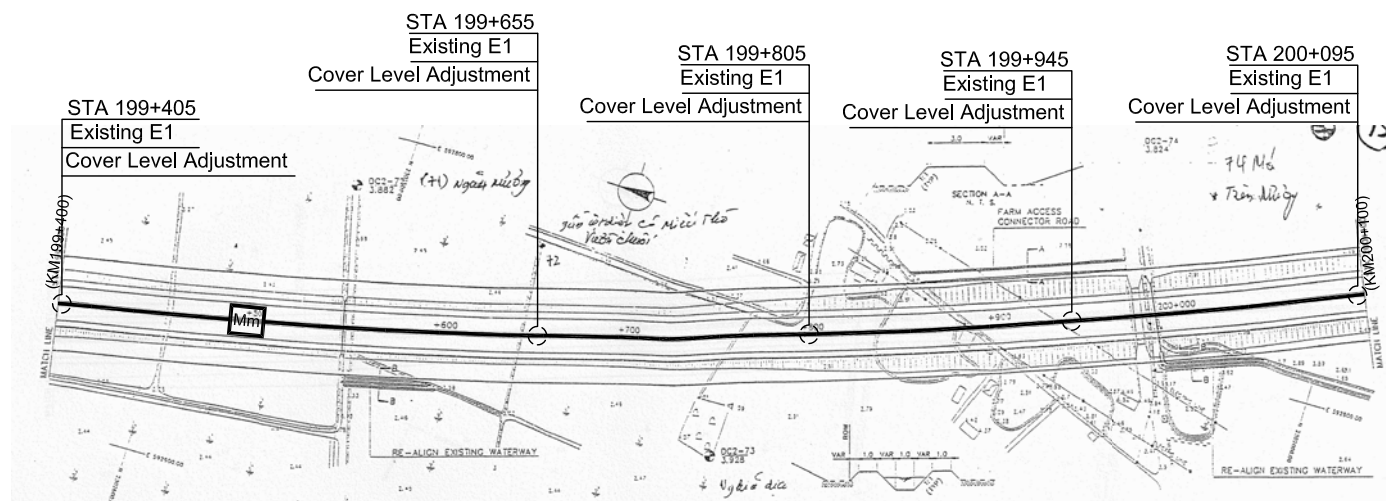
Notes:
CLA: Cover Level Adjustment Work for Existing Cable Chamber

CONSULTANT					SOCIALIST REPUBLIC OF VIETNAM			ITS INTEGRATION PROJECT IN NORTHERN AREA OF VIETNAM		PACKAGE:
ORIENTAL CONSULTANTS GLOBAL CO., LTD METROPOLITAN EXPRESSWAY CO., LTD NEXCO EAST ENGINEERING CO., LTD TRANSPORTATION RESEARCH INSTITUTE CO., LTD ABEAM CONSULTING LTD.	TITLE	NAME	SIGNATURE	DATE	MINISTRY OF TRANSPORT			DRAWING TITLE: LAYOUT PLAN OF ROADSIDE EQUIPMENT & COMMUNICATION DUCT (KM 196+800 ~ KM 198+200, PHAP VAN- GIE EXP.)		DRAWING No.: VI.1-08
	PREPARED BY							SHEET No.:	Rev:	
	CHECKED BY							Sheet	of	
	APPROVED BY							SCALE: 1/4000		



Duct: Type T1 (refer to cross section detail drawing)

Duct: Type T1 (refer to cross section detail drawing)

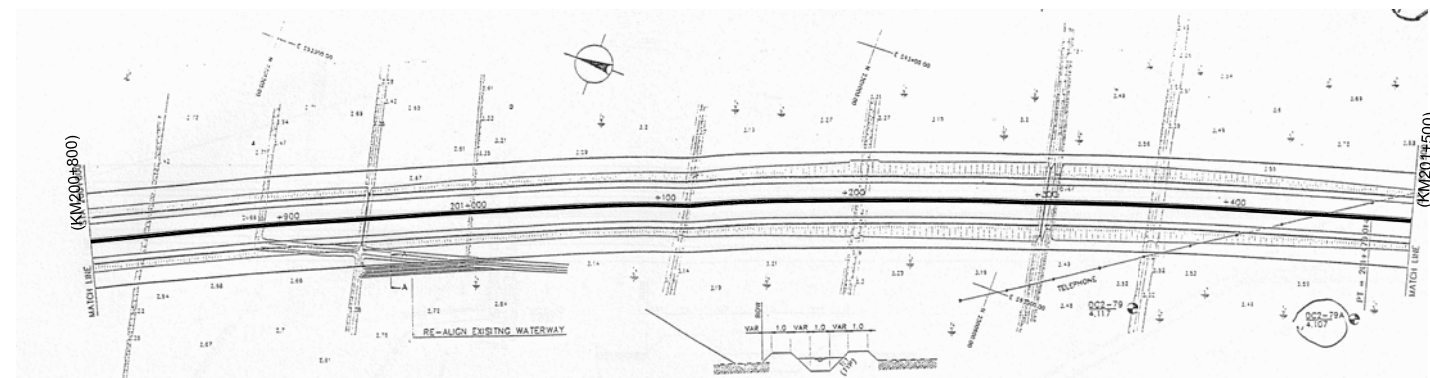


Duct: Type T1 (refer to cross section detail drawing)

Duct: Type T1 (refer to cross section detail drawing)

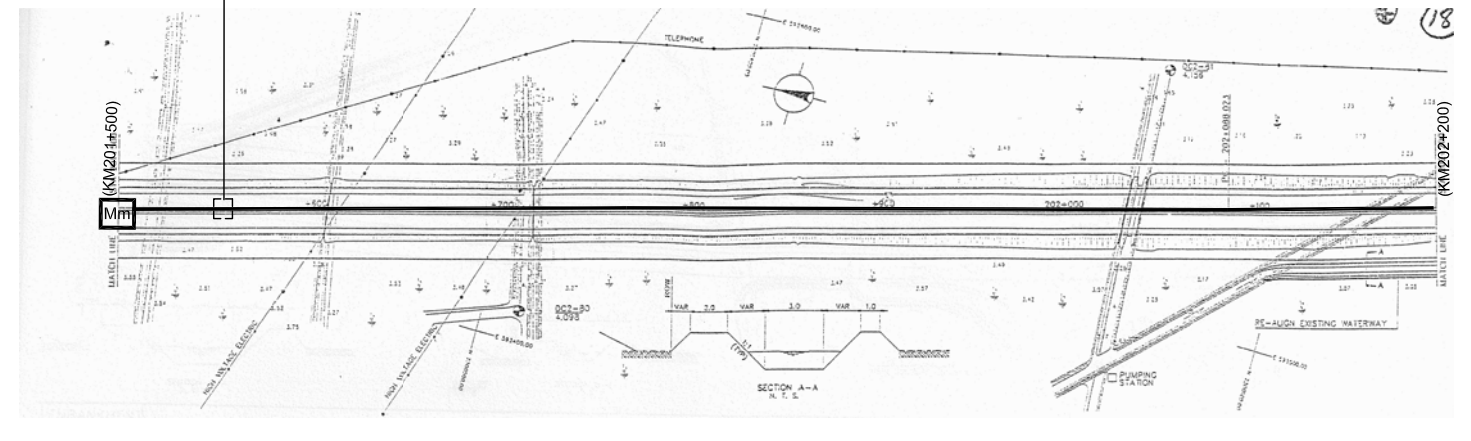
Notes:
CLA: Cover Level Adjustment Work for Existing Cable Chamber

CONSULTANT					SOCIALIST REPUBLIC OF VIETNAM					ITS INTEGRATION PROJECT IN NORTHERN AREA OF VIETNAM			PACKAGE:	
ORIENTAL CONSULTANTS GLOBAL CO., LTD METROPOLITAN EXPRESSWAY CO., LTD NEXCO EAST ENGINEERING CO., LTD TRANSPORTATION RESEARCH INSTITUTE CO., LTD ABEAM CONSULTING LTD.	TITLE	NAME	SIGNATURE	DATE	MINISTRY OF TRANSPORT					DRAWING TITLE: LAYOUT PLAN OF ROADSIDE EQUIPMENT & COMMUNICATION DUCT (KM 198+200 ~ KM 200+800, PHAP VAN - GIE EXP.)			DRAWING No.:	
	PREPARED BY												VI.1-09	
	CHECKED BY									SCALE: 1/4000		SHEET No.:	Rev:	
	APPROVED BY											Sheet	of	

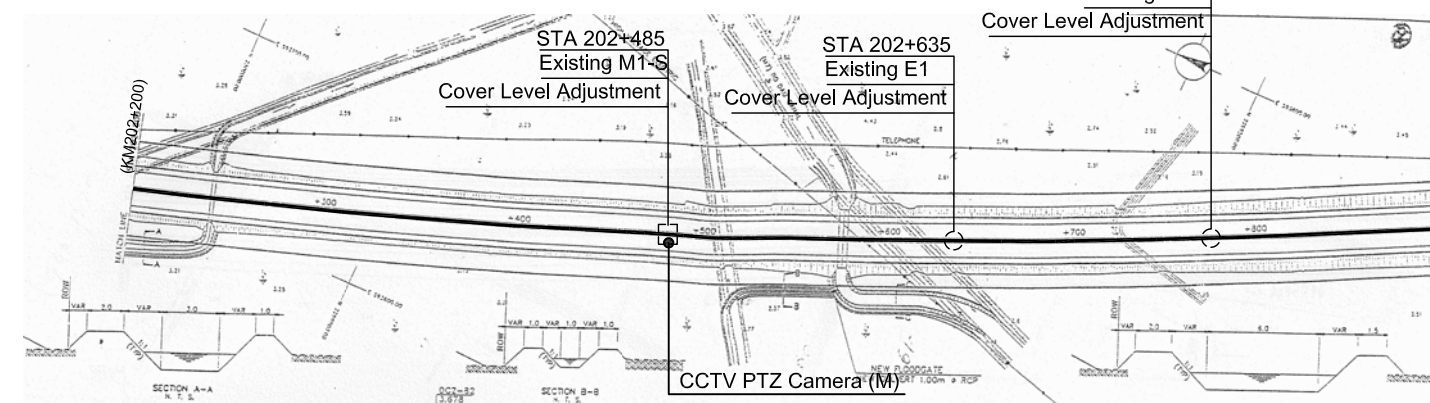


Duct: Type T1 (refer to cross section detail drawing)

STA 201+545
Existing M1-S
Cover Level Adjustment

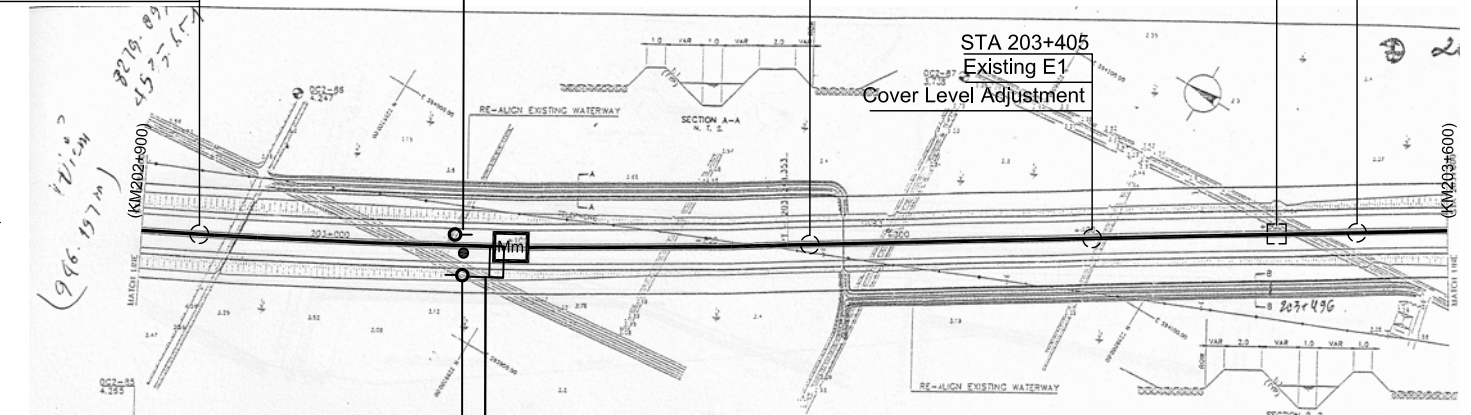


Duct: Type T1 (refer to cross section detail drawing)



Duct: Type T1 (refer to cross section detail drawing)

STA 202+935
Existing E1
Cover Level Adjustment



Duct: Type T1 (refer to cross section detail drawing)

STA 203+560
Existing E1
Cover Level Adjustment

STA 203+505
Existing M1-S
Cover Level Adjustment

STA 203+250
Existing E1
Cover Level Adjustment

STA 203+405
Existing E1
Cover Level Adjustment

CSS (M)

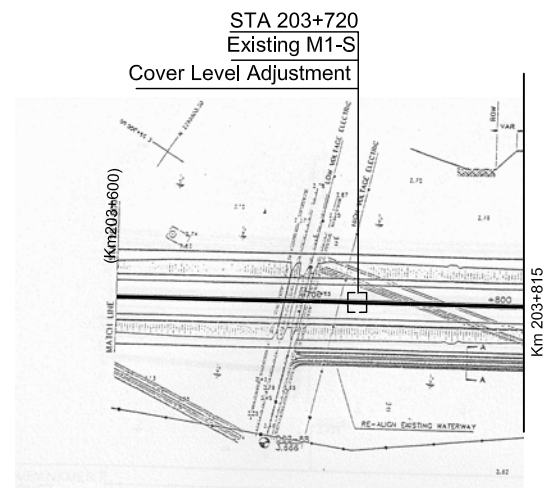
VMS Type-B

CCTV PTZ Camera (M)

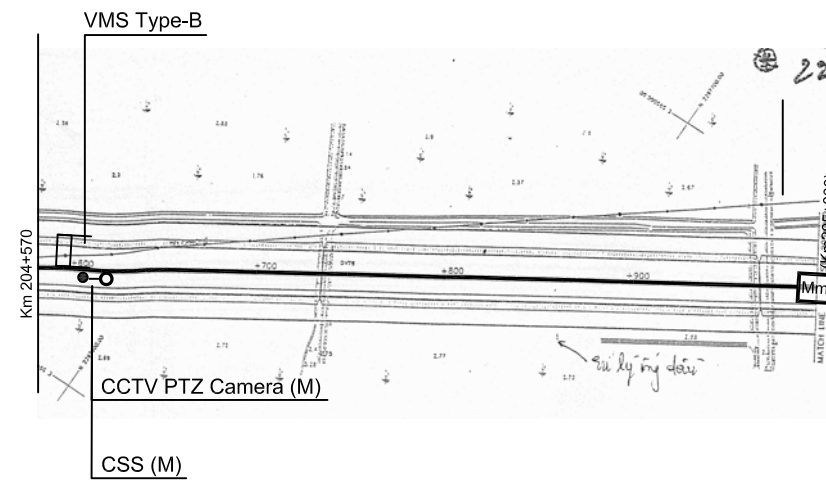
CSS (R)

Notes:
CLA: Cover Level Adjustment Work for Existing Cable Chamber

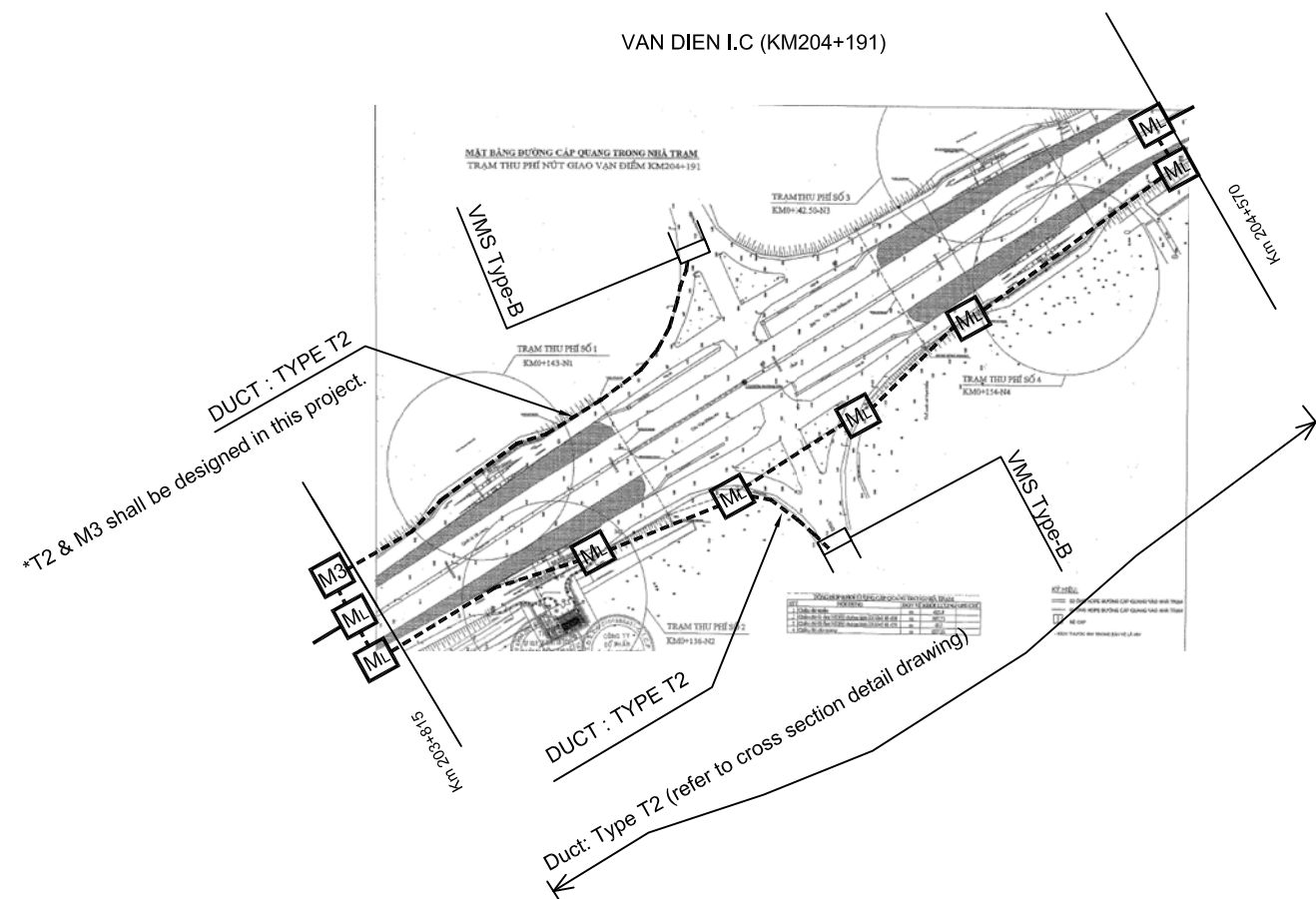
CONSULTANT					SOCIALIST REPUBLIC OF VIETNAM			ITS INTEGRATION PROJECT IN NORTHERN AREA OF VIETNAM		PACKAGE:	
ORIENTAL CONSULTANTS GLOBAL CO., LTD METROPOLITAN EXPRESSWAY CO., LTD NEXCO EAST ENGINEERING CO., LTD TRANSPORTATION RESEARCH INSTITUTE CO., LTD ABEAM CONSULTING LTD.	TITLE	NAME	SIGNATURE	DATE	MINISTRY OF TRANSPORT			DRAWING TITLE:		DRAWING No.:	
	PREPARED BY							LAYOUT PLAN OF ROADSIDE EQUIPMENT & COMMUNICATION DUCT (KM 200+800 ~ KM 203+600, PHAP VAN - GIE EXP.)		VI.1-10	
	CHECKED BY							SCALE: 1/4000		SHEET No.:	Rev:
	APPROVED BY							Sheet of			



Duct: Type T1 (refer to cross section detail drawing)

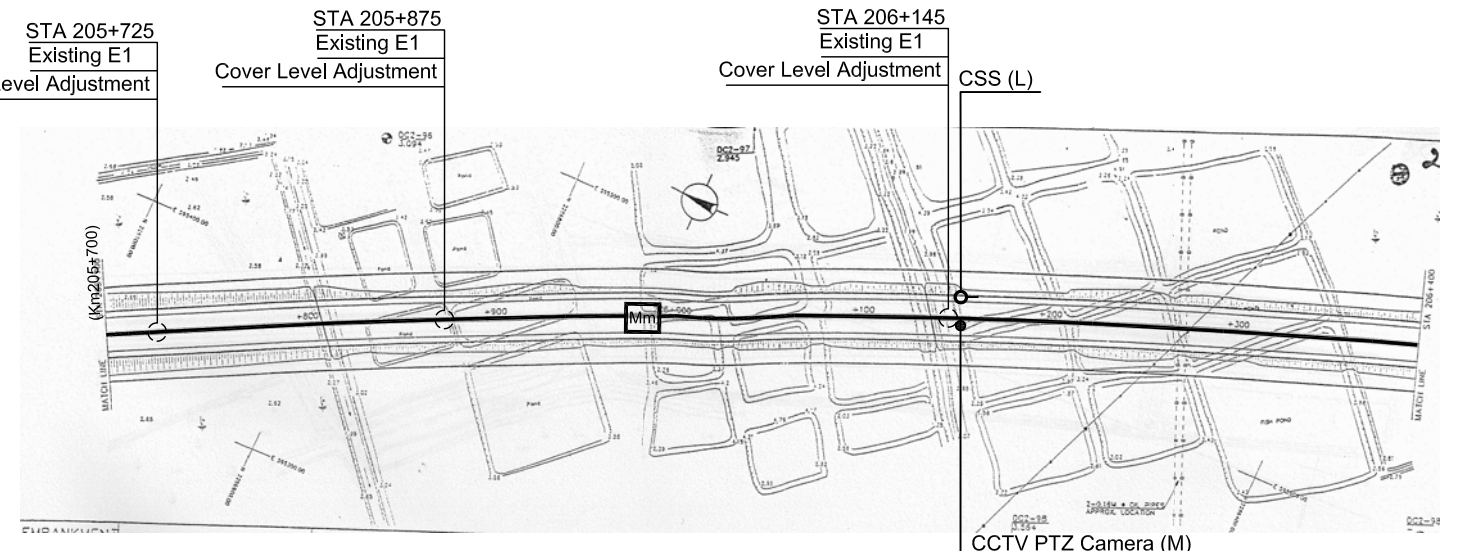
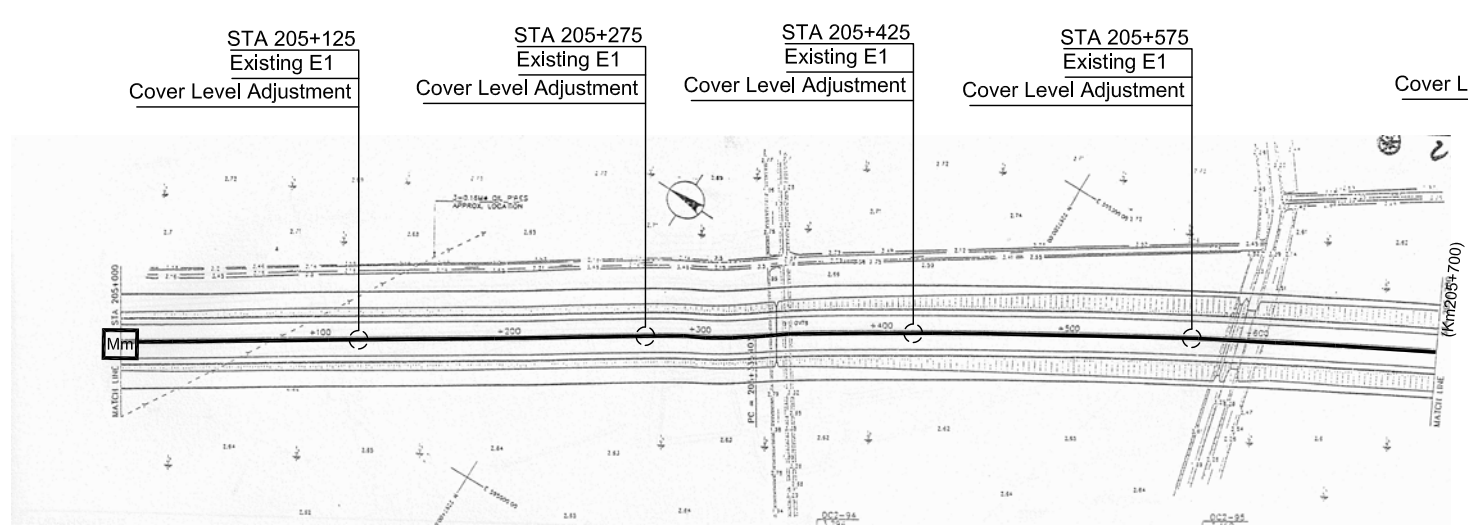


Duct: Type T1 (refer to cross section detail drawing)



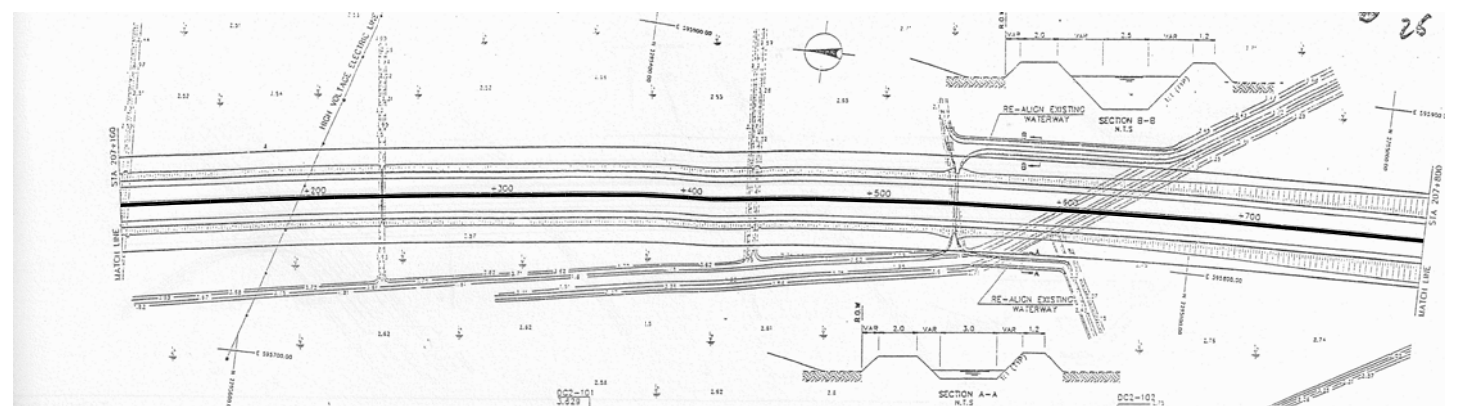
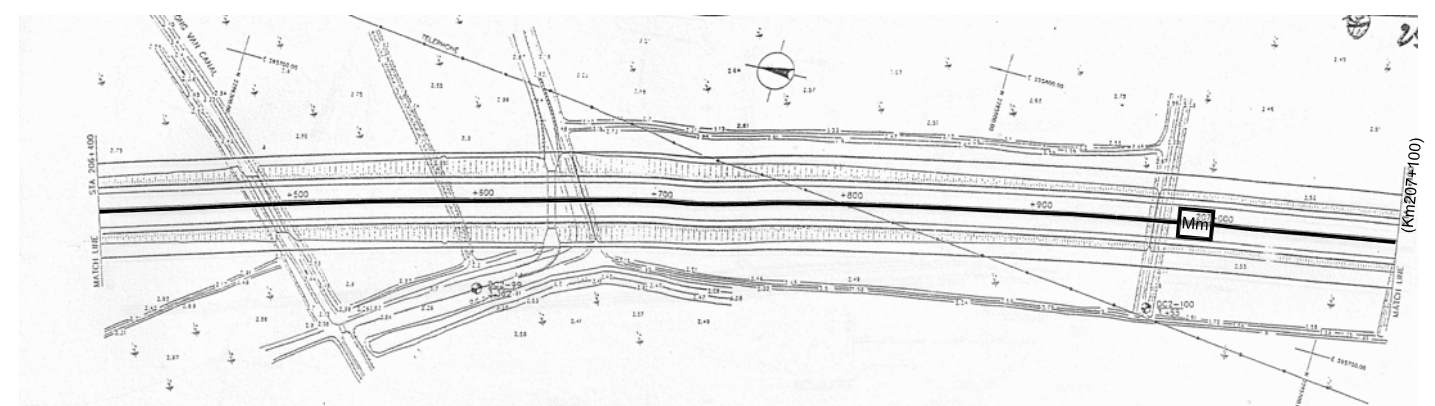
Notes:
CLA: Cover Level Adjustment Work for Existing Cable Chamber

CONSULTANT					SOCIALIST REPUBLIC OF VIETNAM					ITS INTEGRATION PROJECT IN NORTHERN AREA OF VIETNAM		PACKAGE:			
ORIENTAL CONSULTANTS GLOBAL CO., LTD METROPOLITAN EXPRESSWAY CO., LTD NEXCO EAST ENGINEERING CO., LTD TRANSPORTATION RESEARCH INSTITUTE CO., LTD ABEAM CONSULTING LTD.					MINISTRY OF TRANSPORT					DRAWING TITLE: LAYOUT PLAN OF ROADSIDE EQUIPMENT & COMMUNICATION DUCT (KM 203+600 ~ KM 205+000, PHAP VAN - GIE EXP.)		DRAWING No.:		VI.1-11	
												SHEET No.:		Rev:	
												Sheet		of	
TITLE					NAME					SCALE: 1/4000					
PREPARED BY					SIGNATURE										
CHECKED BY					DATE										
APPROVED BY															



Duct: Type T1 (refer to cross section detail drawing)

Duct: Type T1 (refer to cross section detail drawing)

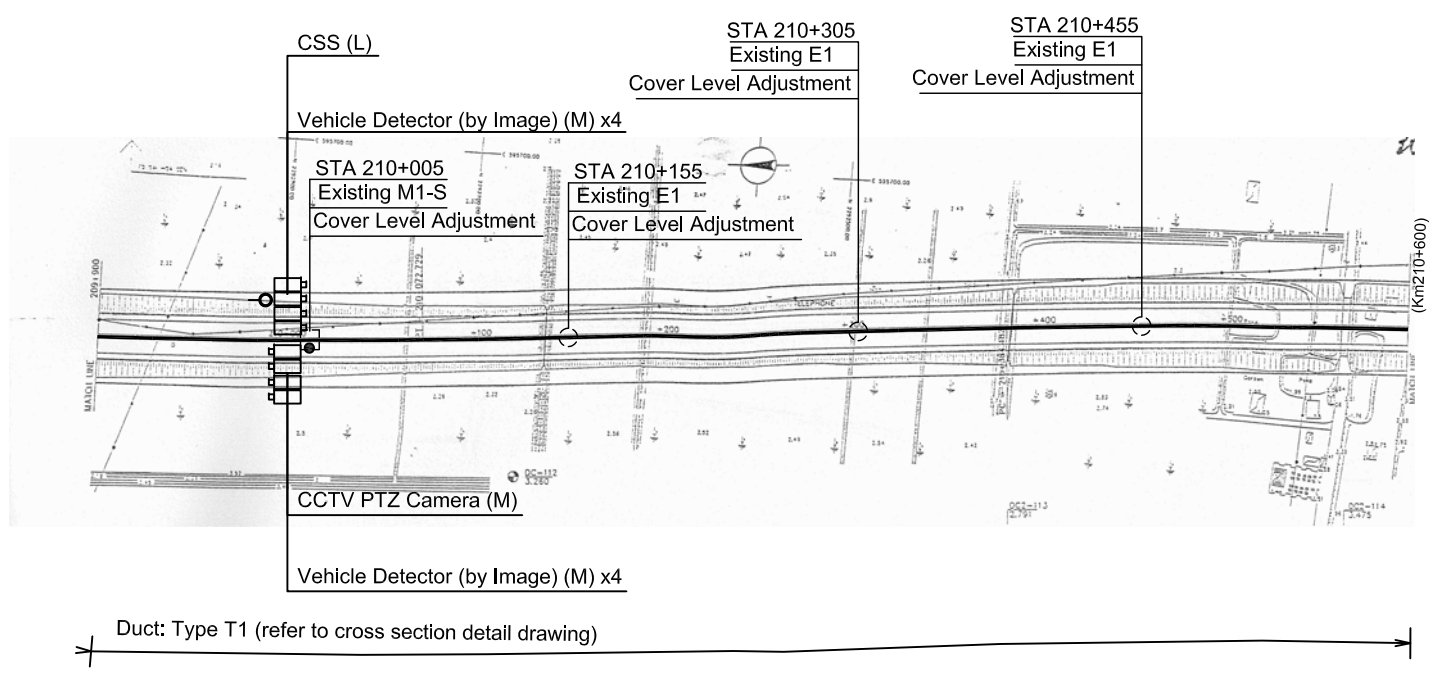
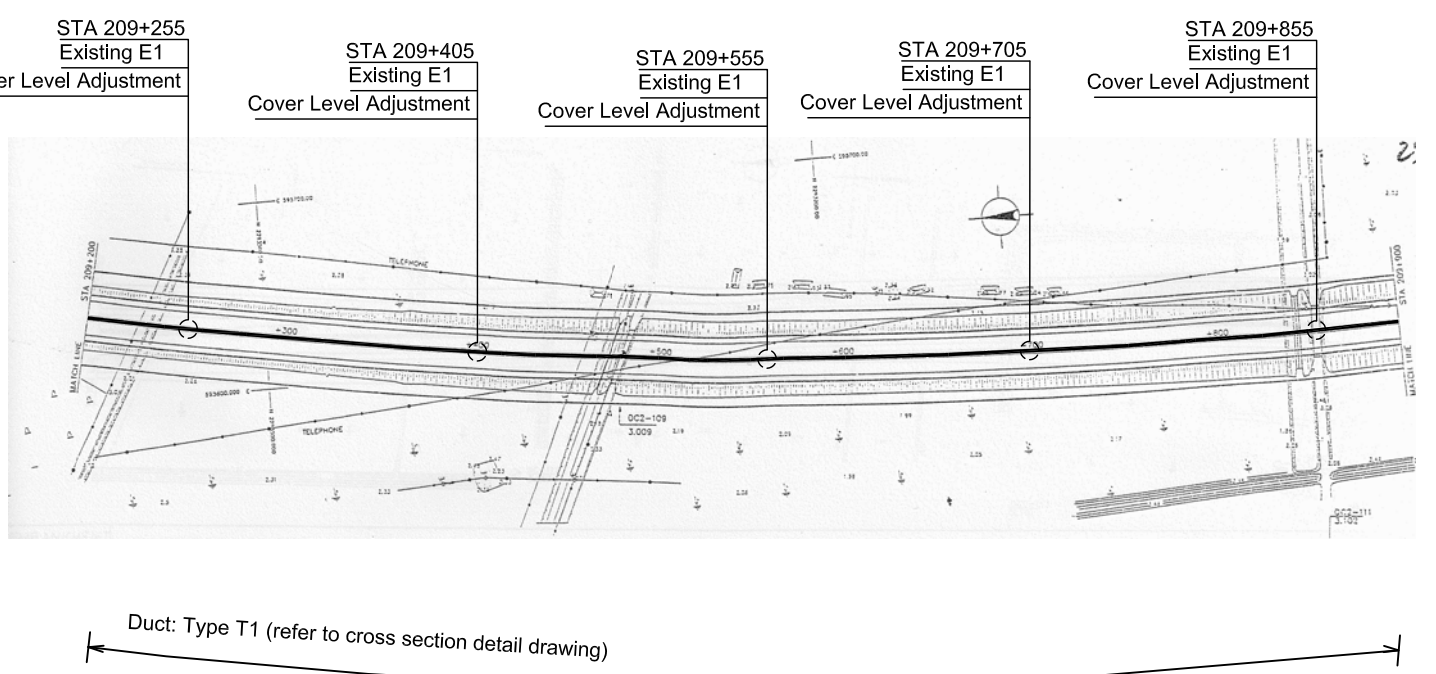
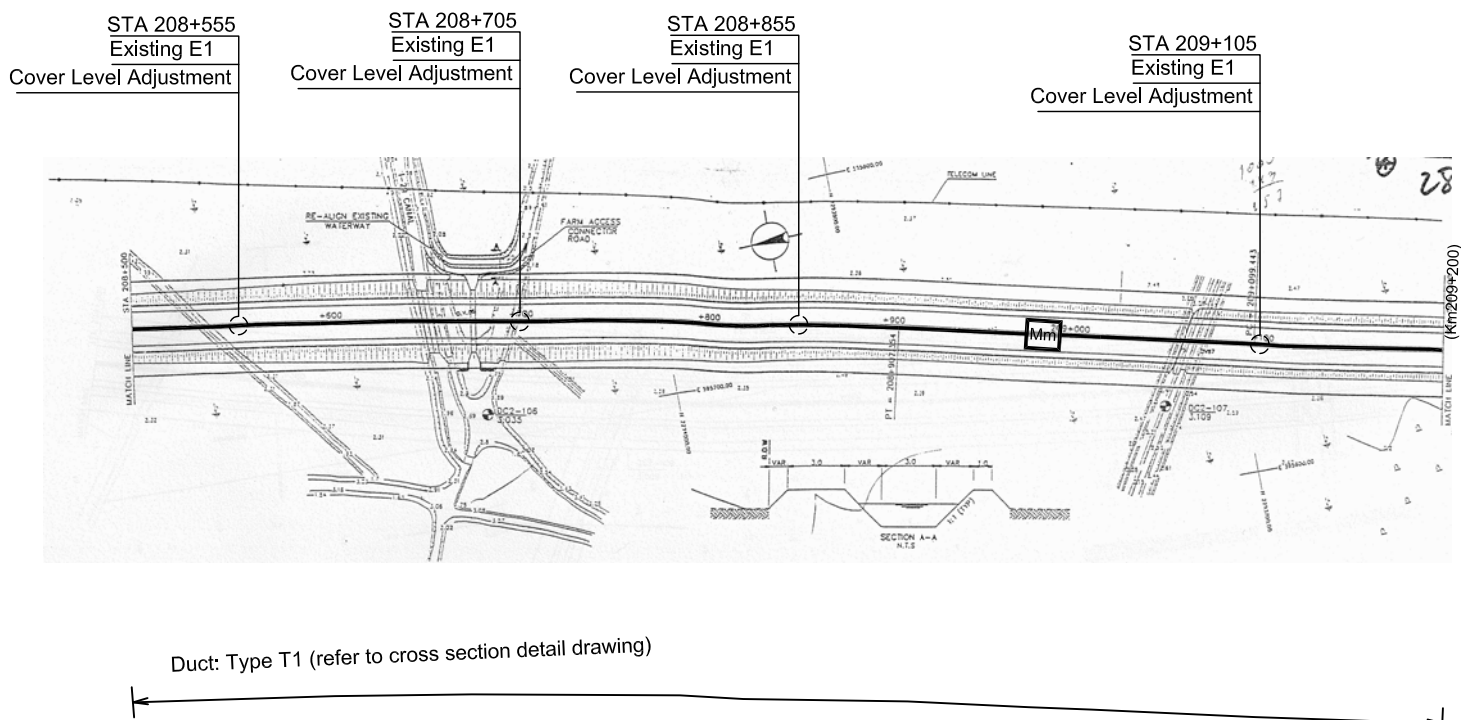
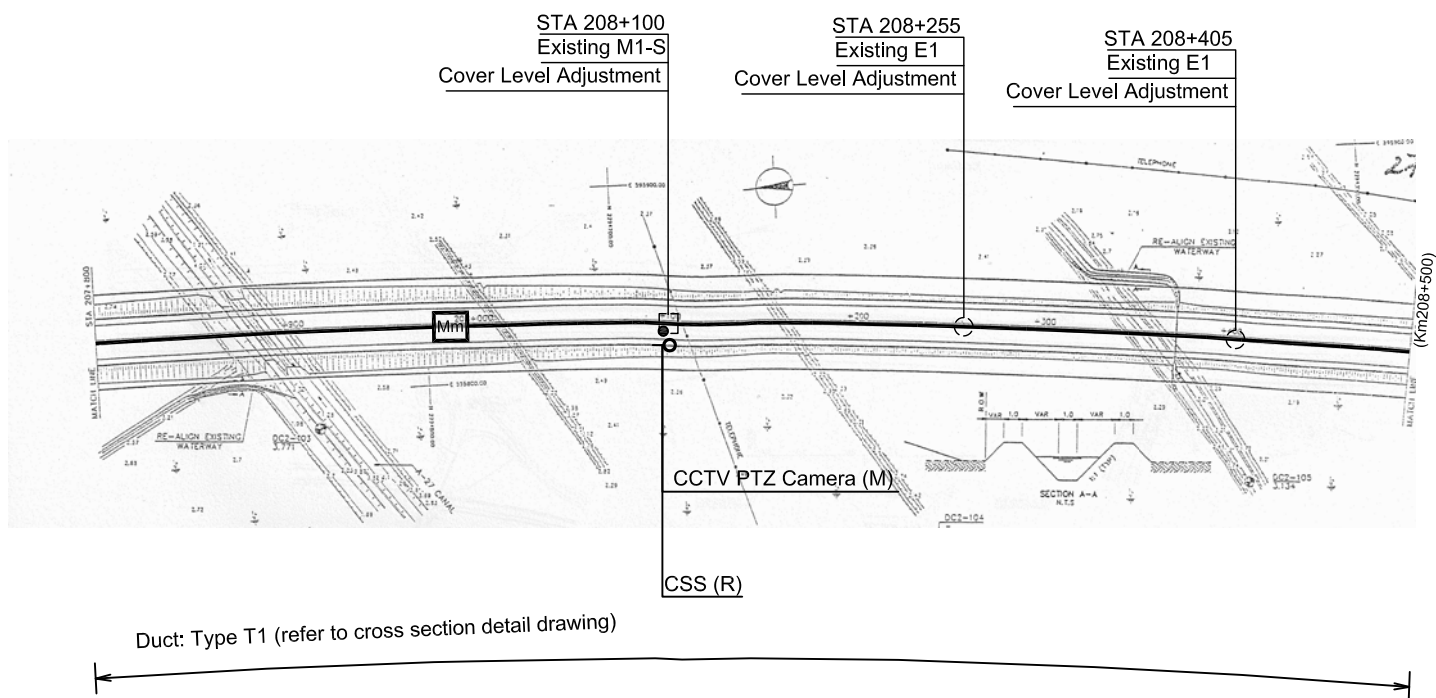


Duct: Type T1 (refer to cross section detail drawing)

Duct: Type T1 (refer to cross section detail drawing)

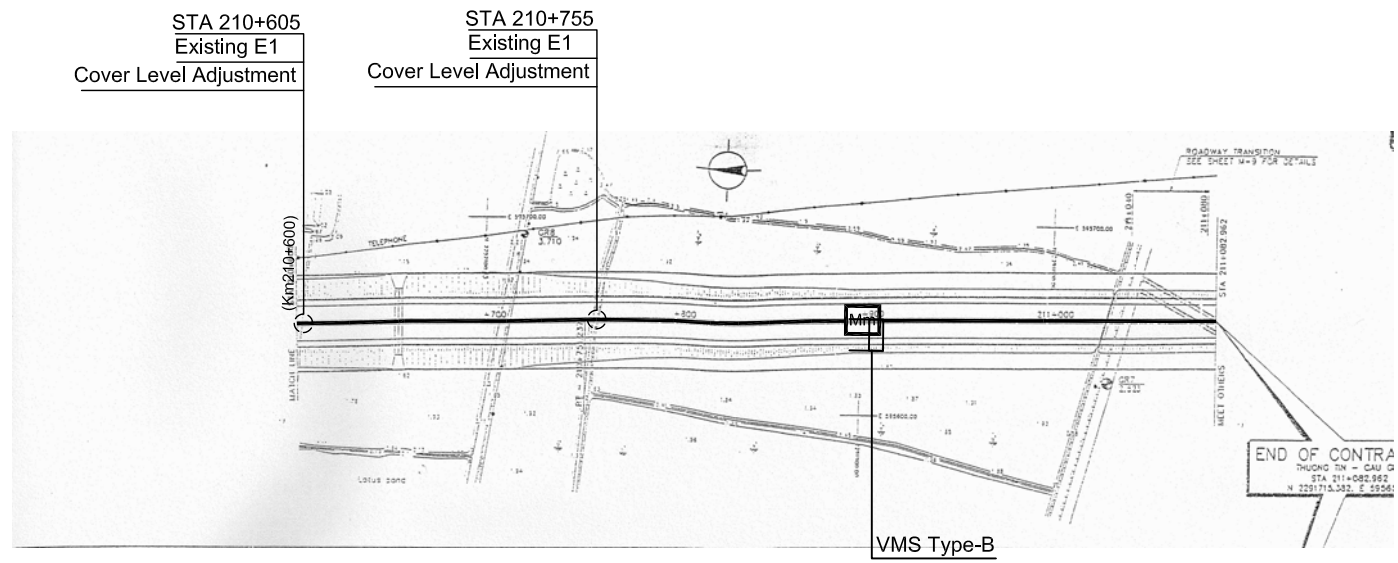
Notes:
CLA: Cover Level Adjustment Work for Existing Cable Chamber

CONSULTANT					SOCIALIST REPUBLIC OF VIETNAM			ITS INTEGRATION PROJECT IN NORTHERN AREA OF VIETNAM		PACKAGE:	
ORIENTAL CONSULTANTS GLOBAL CO., LTD METROPOLITAN EXPRESSWAY CO., LTD NEXCO EAST ENGINEERING CO., LTD TRANSPORTATION RESEARCH INSTITUTE CO., LTD ABEAM CONSULTING LTD.	TITLE	NAME	SIGNATURE	DATE	MINISTRY OF TRANSPORT			DRAWING TITLE:		DRAWING No.:	
	PREPARED BY							LAYOUT PLAN OF ROADSIDE EQUIPMENT & COMMUNICATION DUCT (KM 205+000 ~ KM 207+800, PHAP VAN - GIE EXP.)		VI.1-12	
	CHECKED BY							SCALE: 1/4000		SHEET No.:	Rev:
	APPROVED BY							Sheet of			



Notes:
 CLA: Cover Level Adjustment Work for Existing Cable Chamber

CONSULTANT					SOCIALIST REPUBLIC OF VIETNAM					ITS INTEGRATION PROJECT IN NORTHERN AREA OF VIETNAM			PACKAGE:	
ORIENTAL CONSULTANTS GLOBAL CO., LTD METROPOLITAN EXPRESSWAY CO., LTD NEXCO EAST ENGINEERING CO., LTD TRANSPORTATION RESEARCH INSTITUTE CO., LTD ABEAM CONSULTING LTD.	TITLE	NAME	SIGNATURE	DATE	MINISTRY OF TRANSPORT					DRAWING TITLE: LAYOUT PLAN OF ROADSIDE EQUIPMENT & COMMUNICATION DUCT (KM 207+800 ~ KM 210+600, PHAP VAN - GIE EXP.)			DRAWING No.:	
	PREPARED BY												VI.1-13	
	CHECKED BY									SCALE: 1/4000		SHEET No.:	Rev:	
	APPROVED BY											Sheet	of	



Duct: Type T1 (refer to cross section detail drawing)

Notes:
 CLA: Cover Level Adjustment Work for Existing Cable Chamber

CONSULTANT					SOCIALIST REPUBLIC OF VIETNAM			ITS INTEGRATION PROJECT IN NORTHERN AREA OF VIETNAM		PACKAGE:	
ORIENTAL CONSULTANTS GLOBAL CO., LTD METROPOLITAN EXPRESSWAY CO., LTD NEXCO EAST ENGINEERING CO., LTD TRANSPORTATION RESEARCH INSTITUTE CO., LTD ABEAM CONSULTING LTD.	TITLE	NAME	SIGNATURE	DATE	MINISTRY OF TRANSPORT			DRAWING TITLE:		DRAWING No.:	
	PREPARED BY							LAYOUT PLAN OF ROADSIDE EQUIPMENT & COMMUNICATION DUCT (KM 210+600 ~ KM 211+000, PHAP VAN - GIE EXP.)		VI.1-14	
	CHECKED BY							SCALE: 1/4000		SHEET No.:	Rev:
	APPROVED BY							Sheet of			