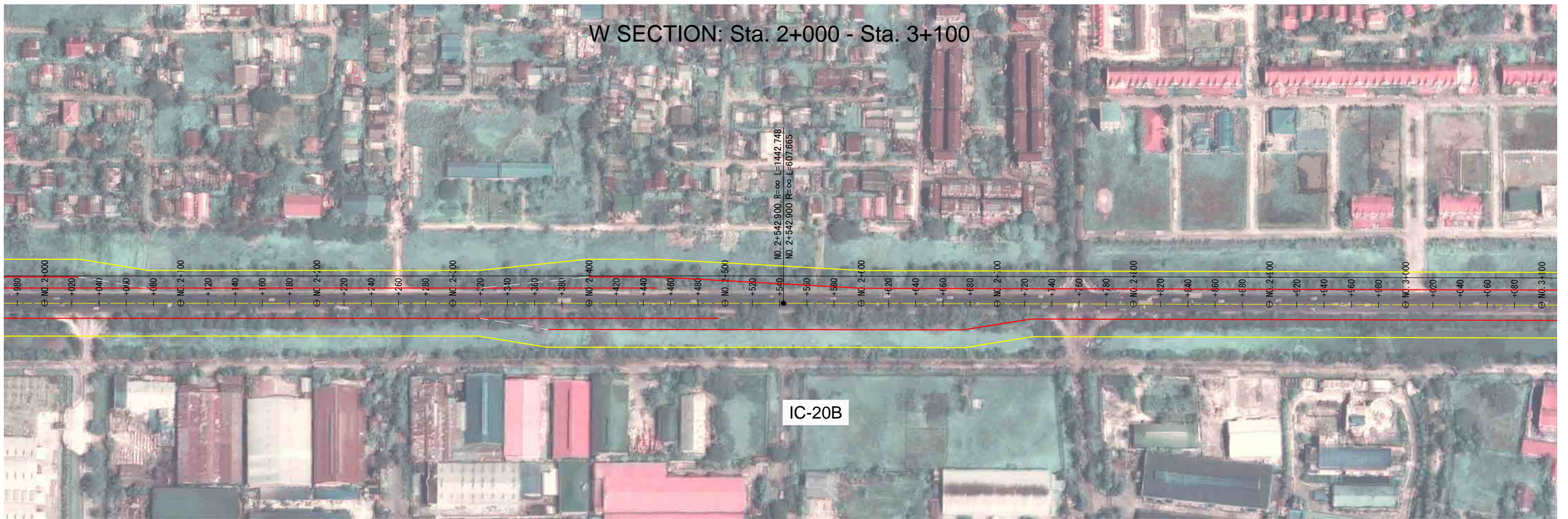
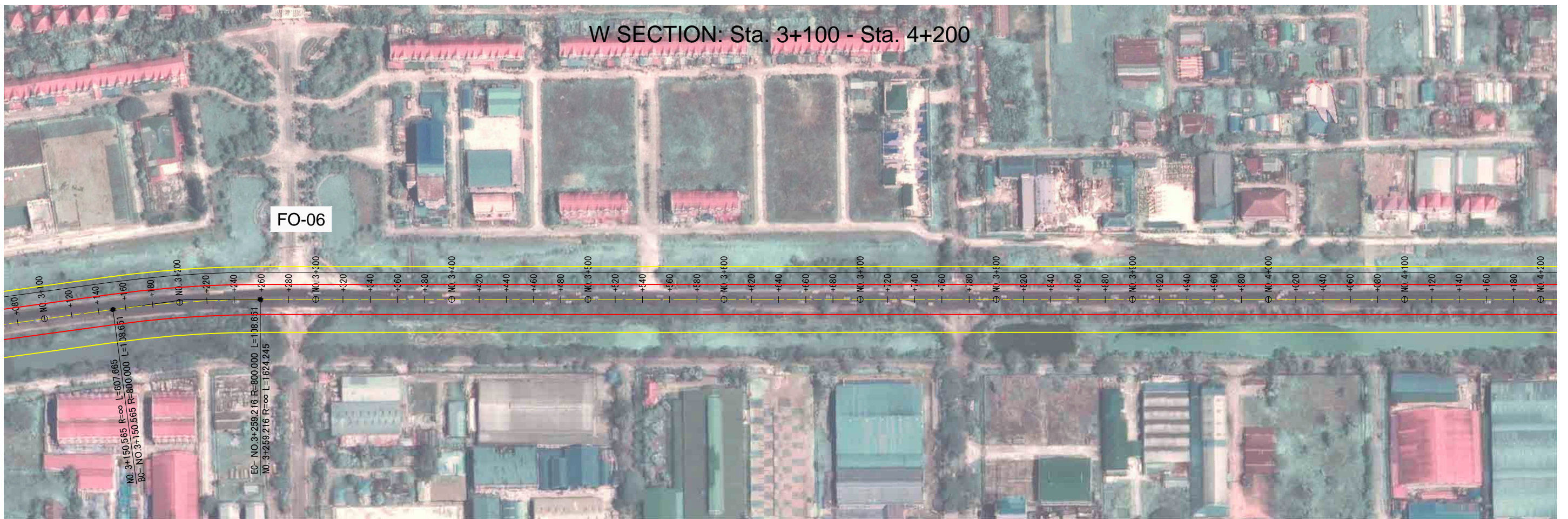


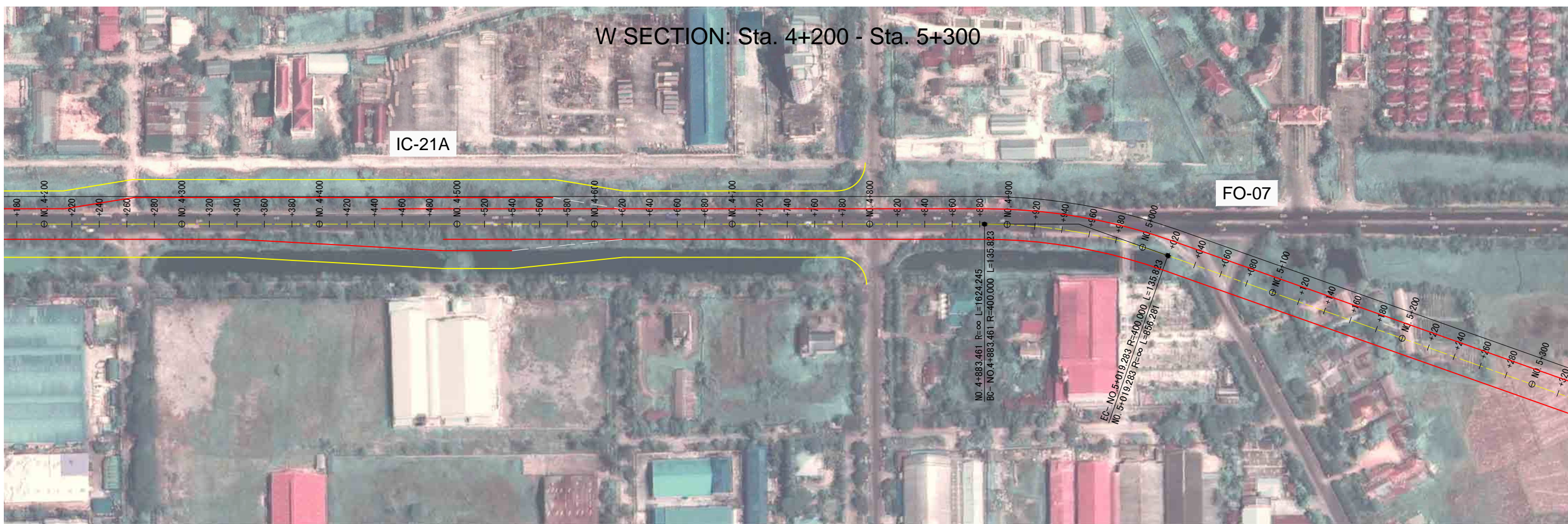
W SECTION: Sta. 2+000 - Sta. 3+100



W SECTION: Sta. 3+100 - Sta. 4+200



W SECTION: Sta. 4+200 - Sta. 5+300



W SECTION: Sta. 5+300 - Sta. 6+400



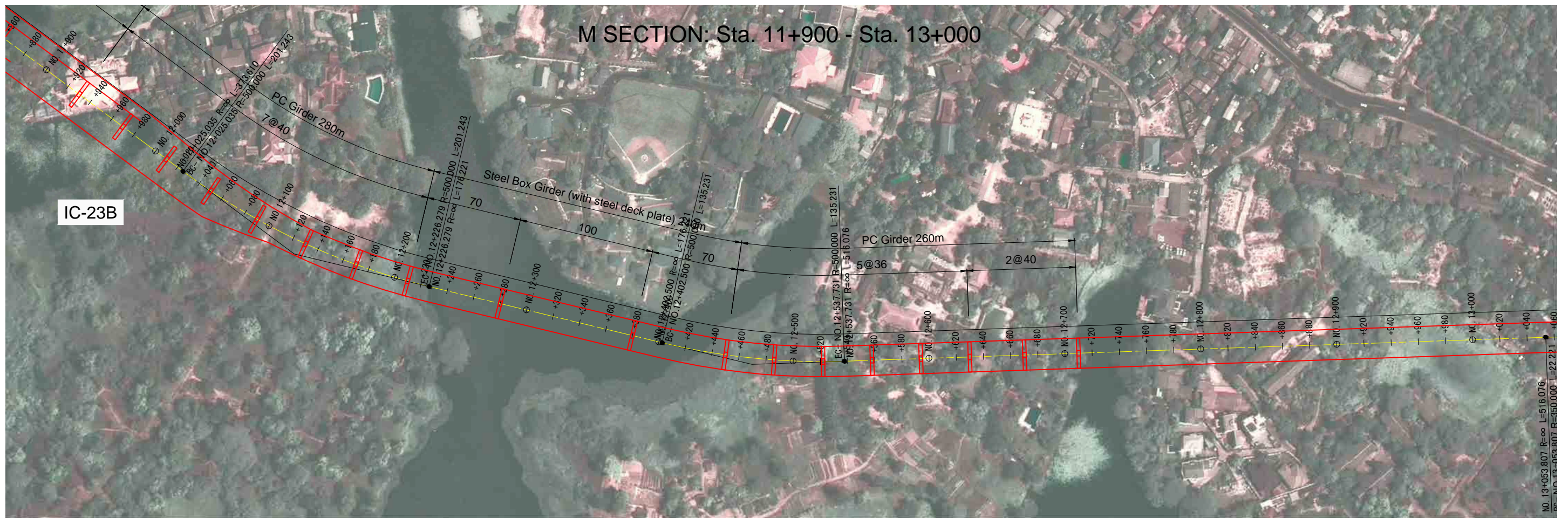


M SECTION: Sta. 8+600 - Sta. 9+700

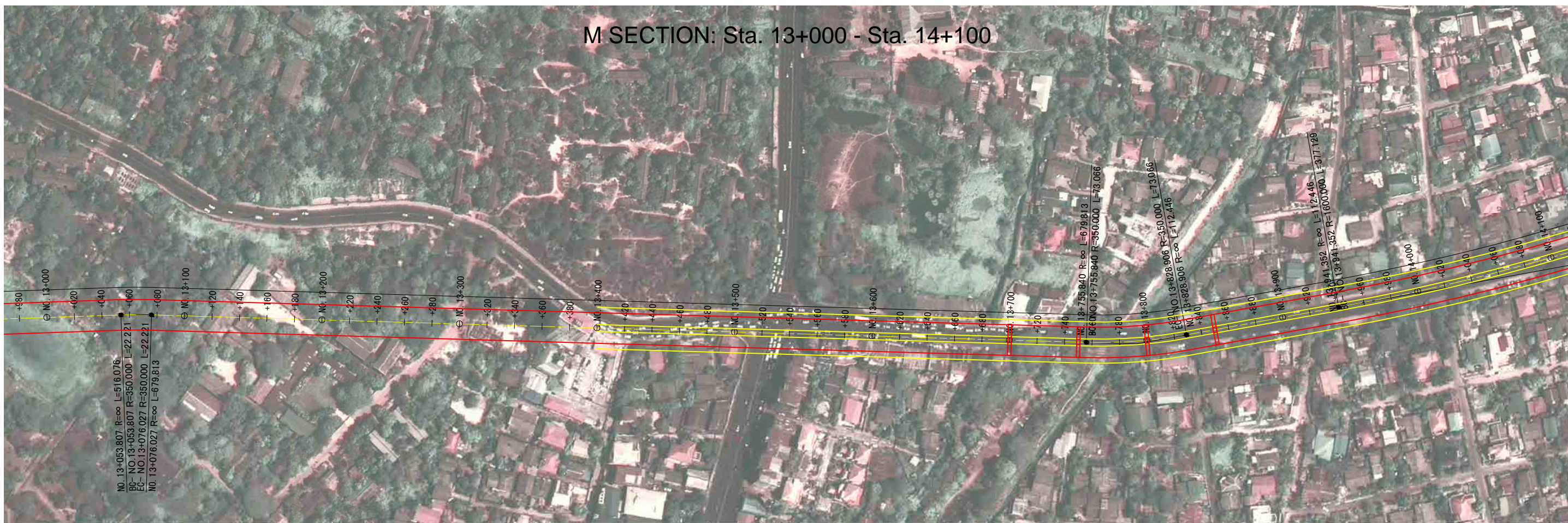


M SECTION: Sta. 9+700 - Sta. 10+800

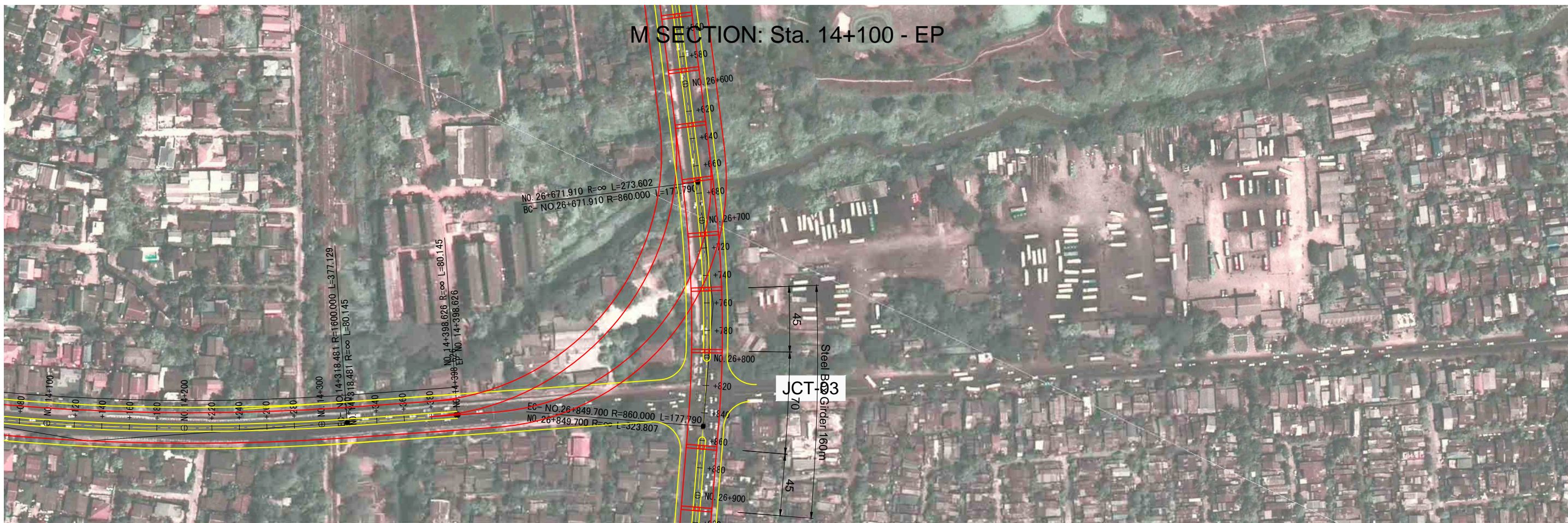




M SECTION: Sta. 13+000 - Sta. 14+100



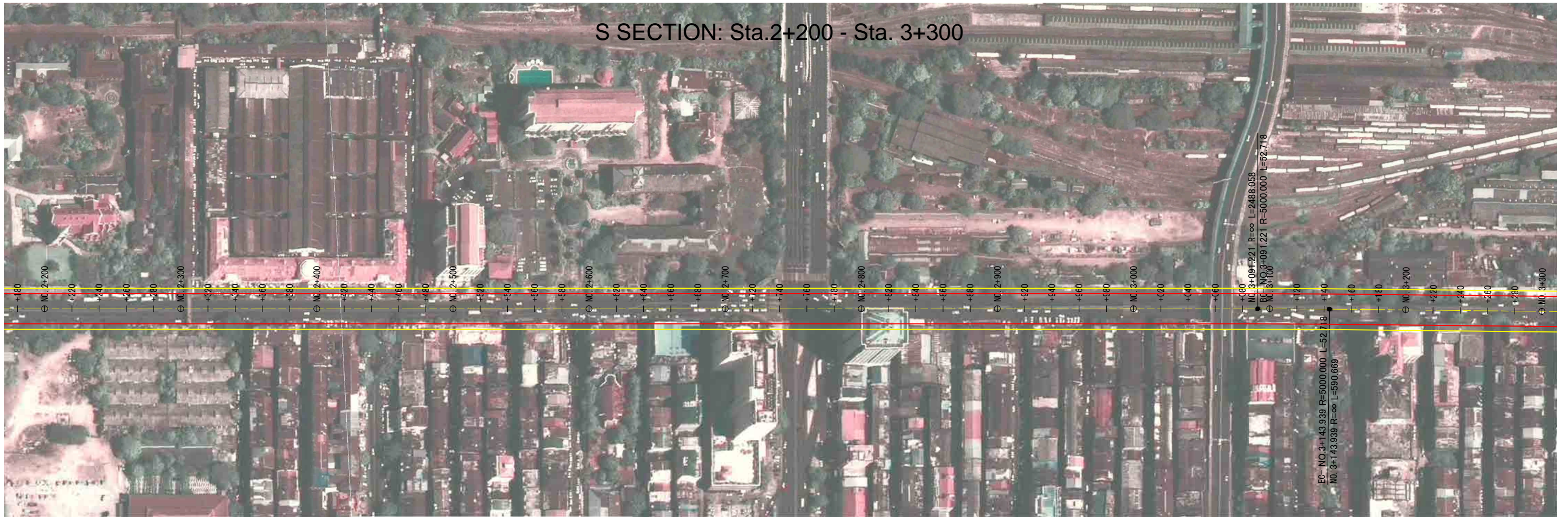
M SECTION: Sta. 14+100 - EP





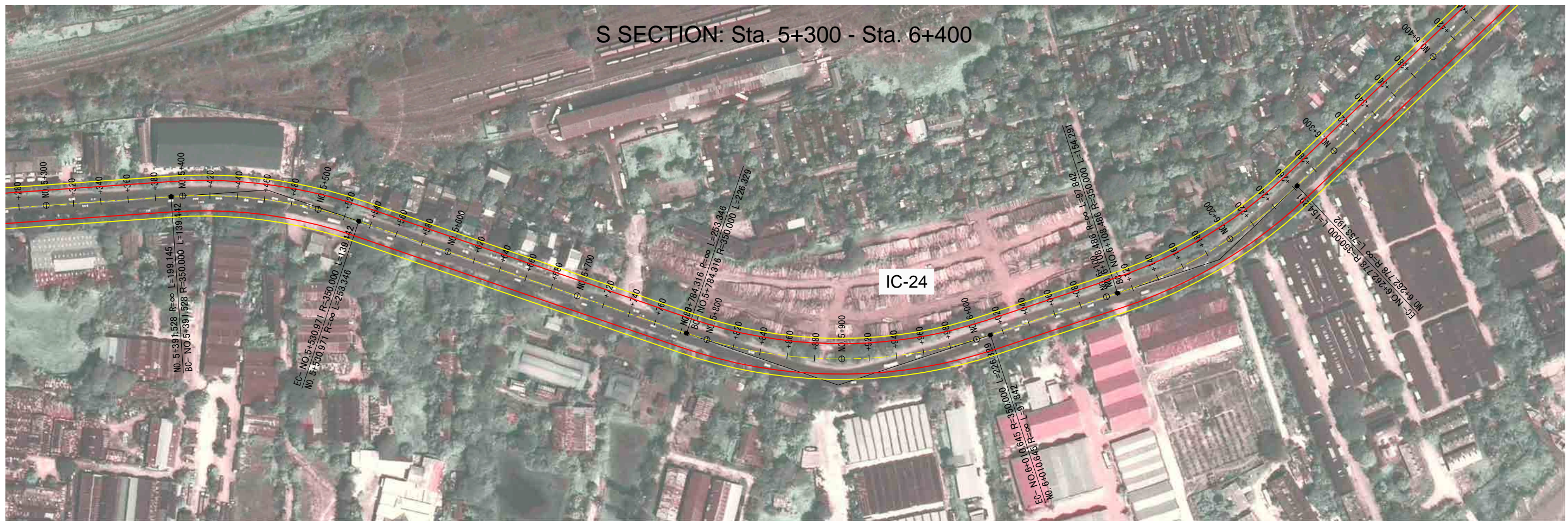
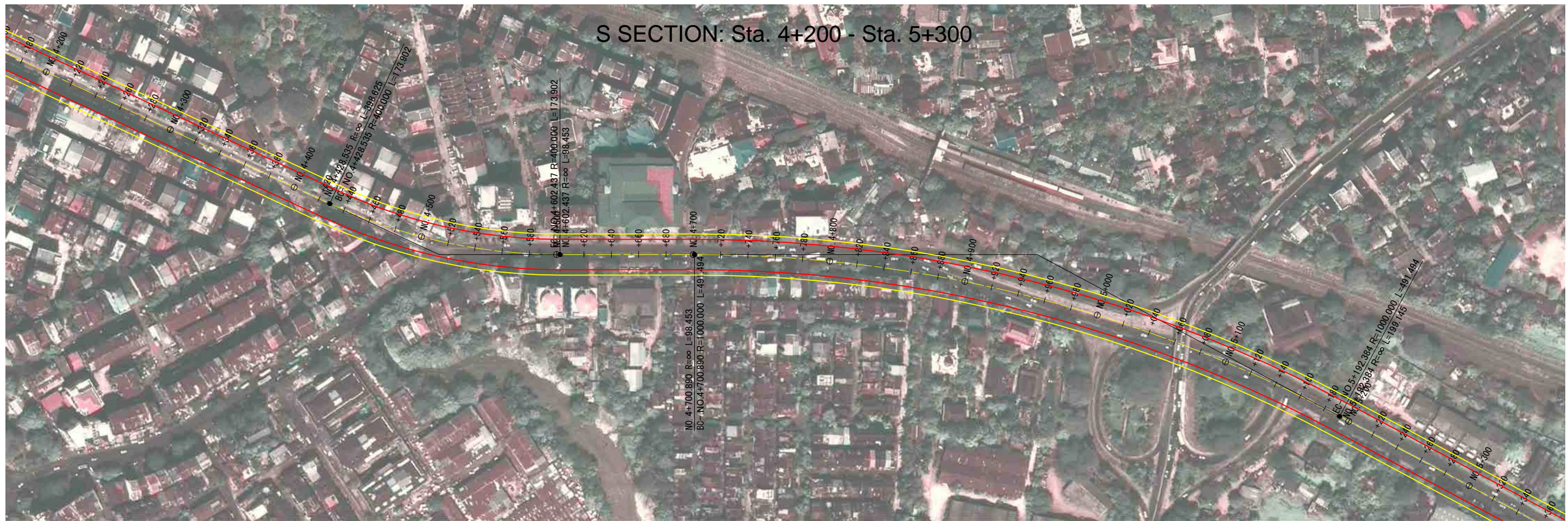


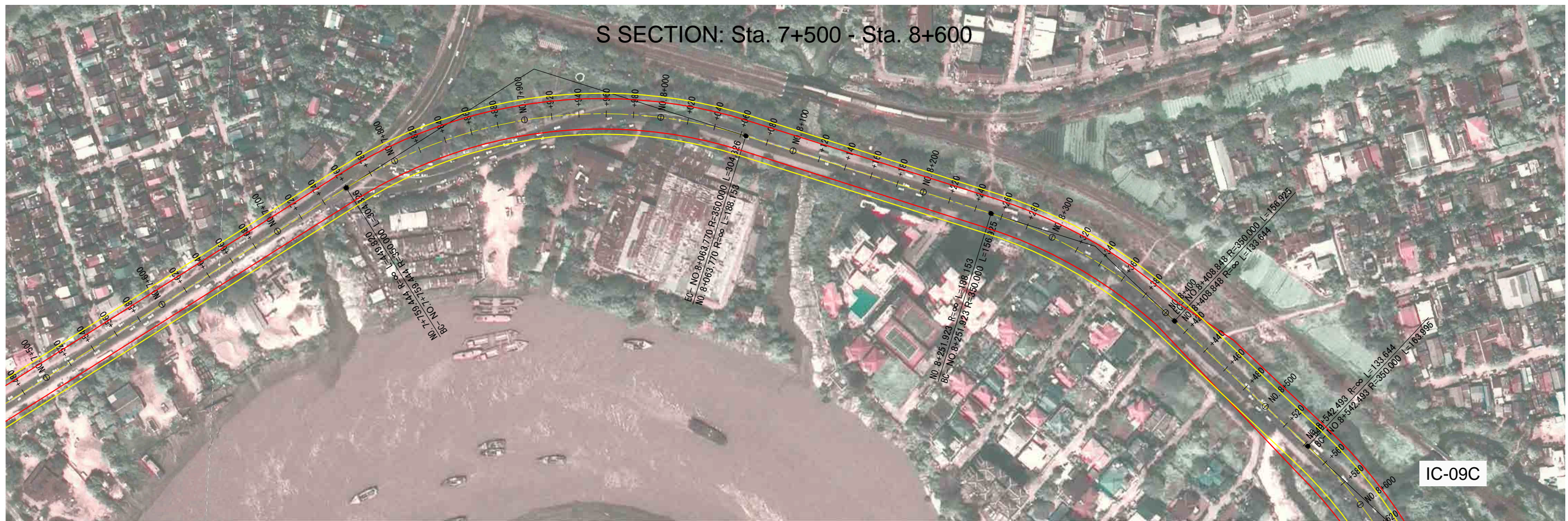
S SECTION: Sta.2+200 - Sta. 3+300



S SECTION: Sta. 3+300 - Sta. 4+200







IC-09C

S SECTION: Sta. 8+600 - EP

