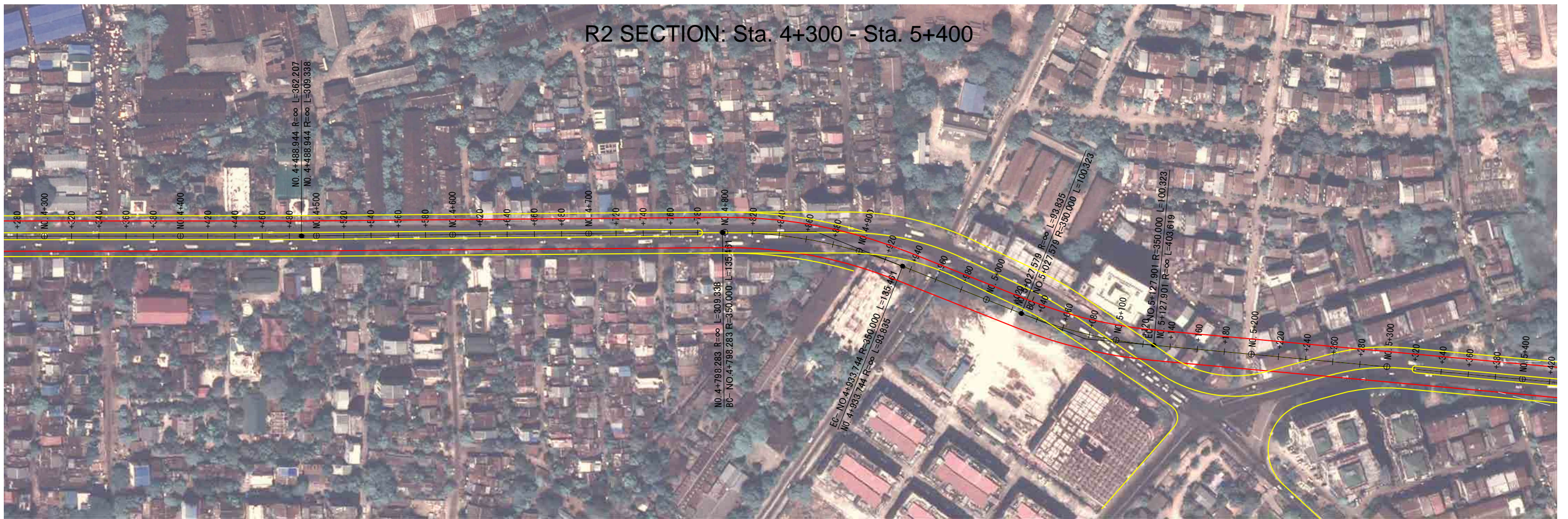
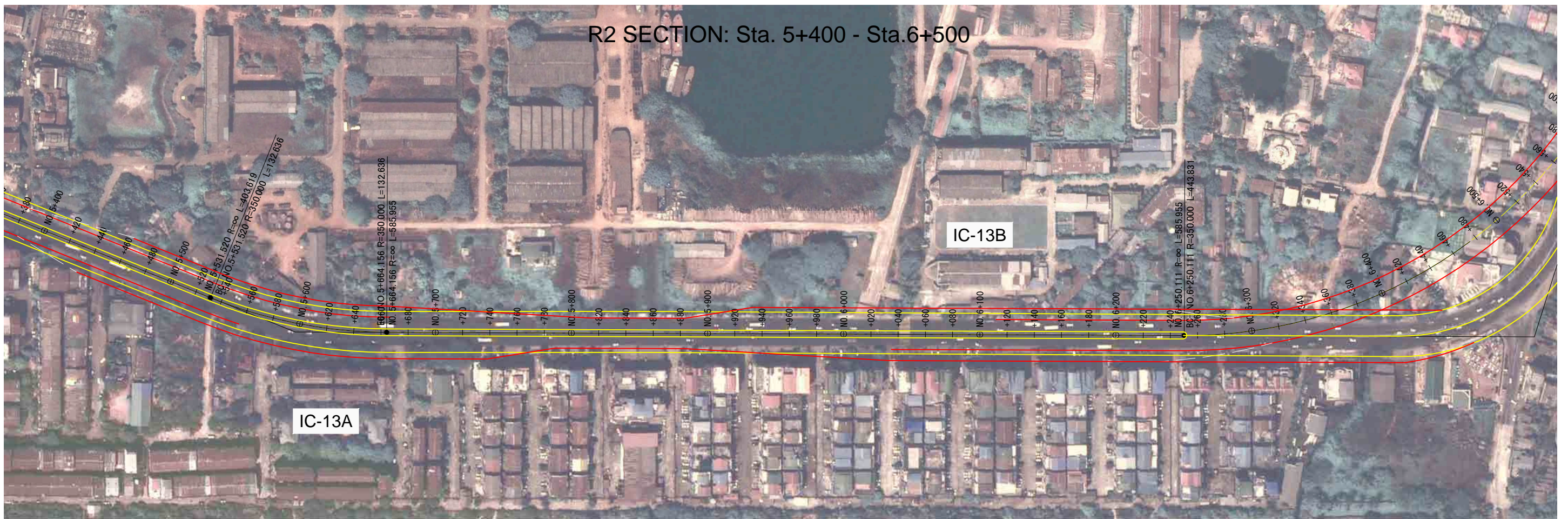




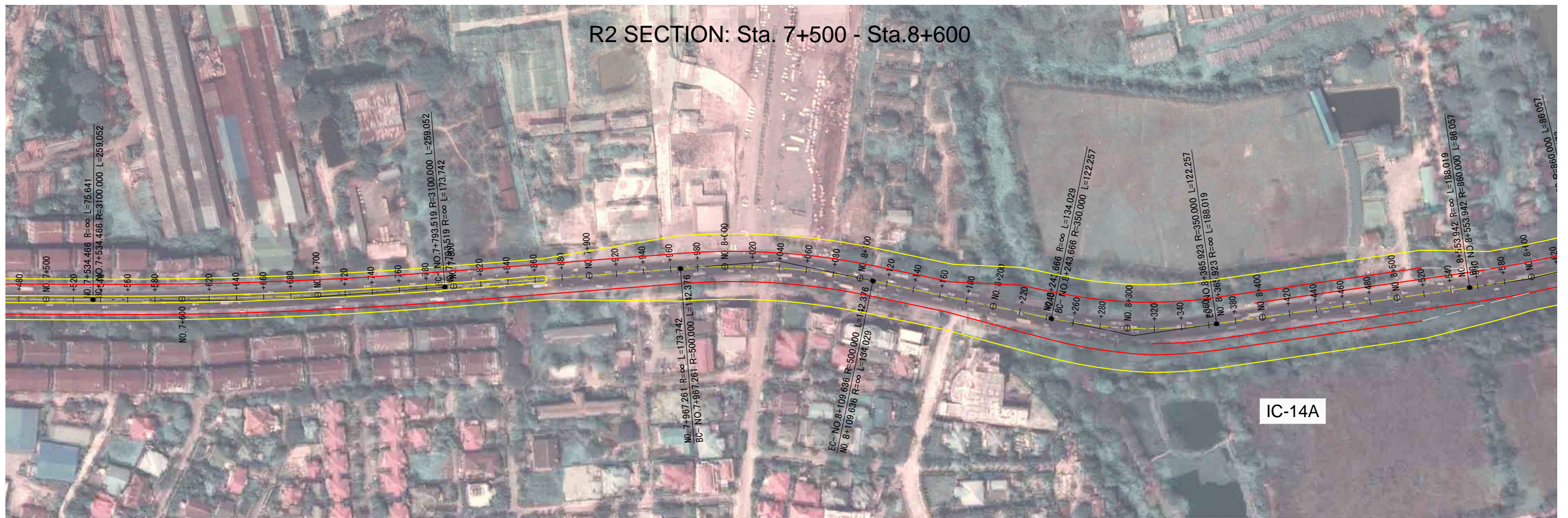
R2 SECTION: Sta. 4+300 - Sta. 5+400



R2 SECTION: Sta. 5+400 - Sta. 6+500

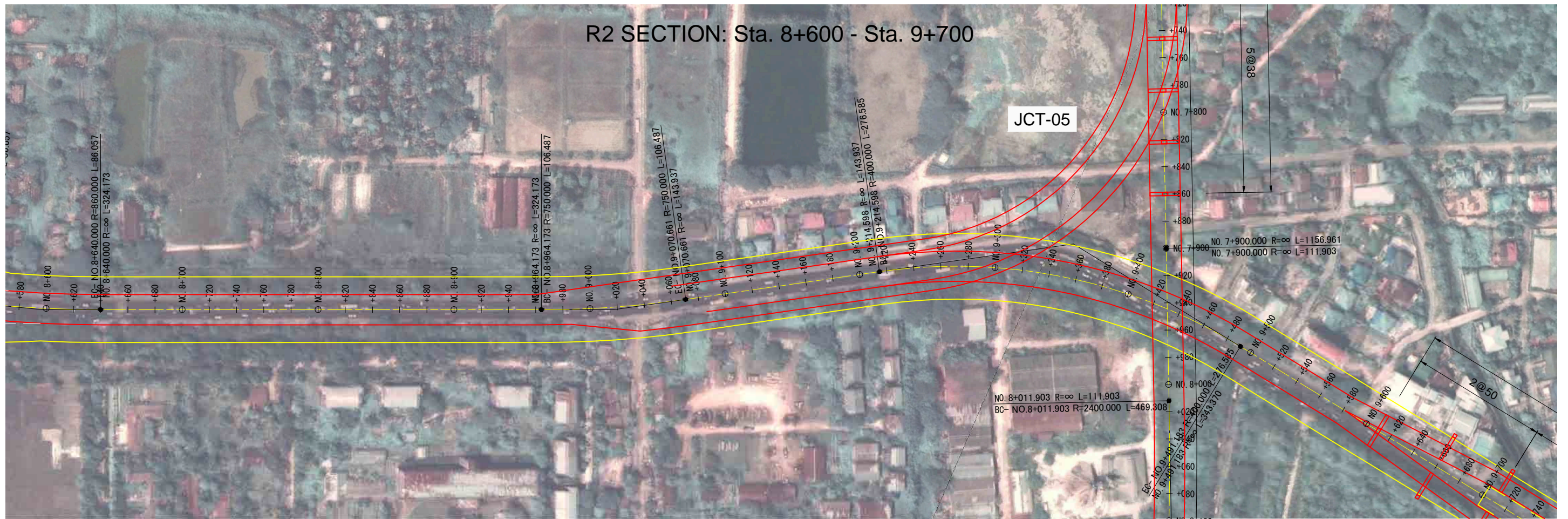






IC-14A







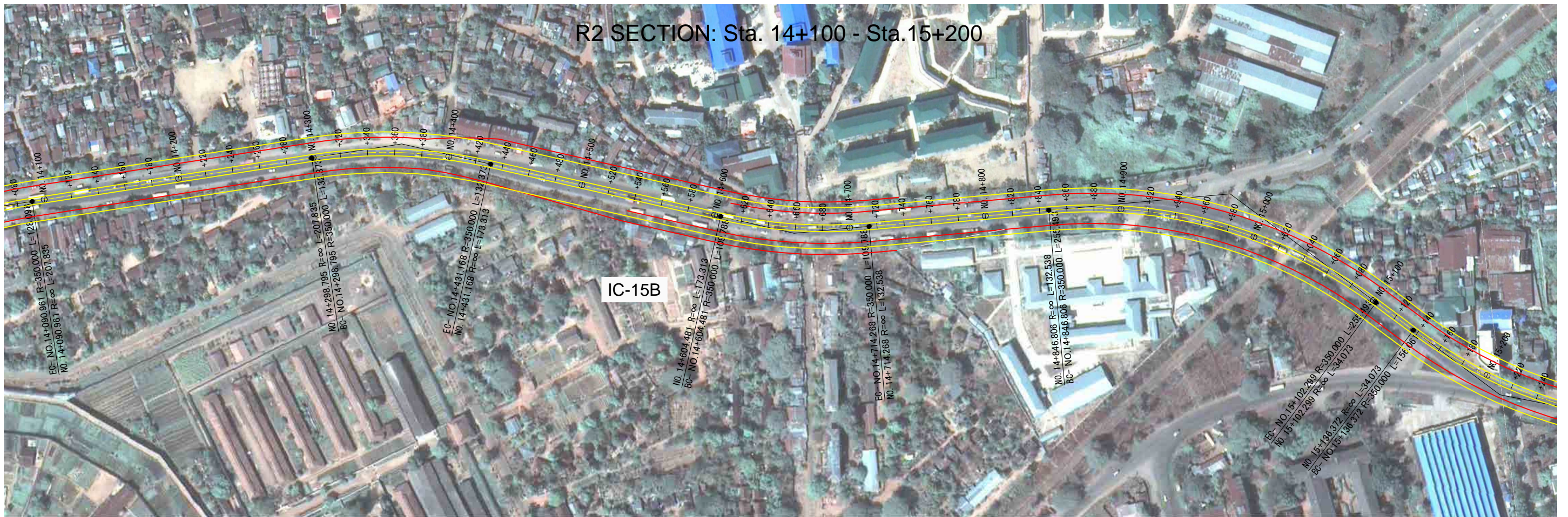




R2 SECTION: Sta. 13+000 - Sta. 14+100



R2 SECTION: Sta. 14+100 - Sta. 15+200

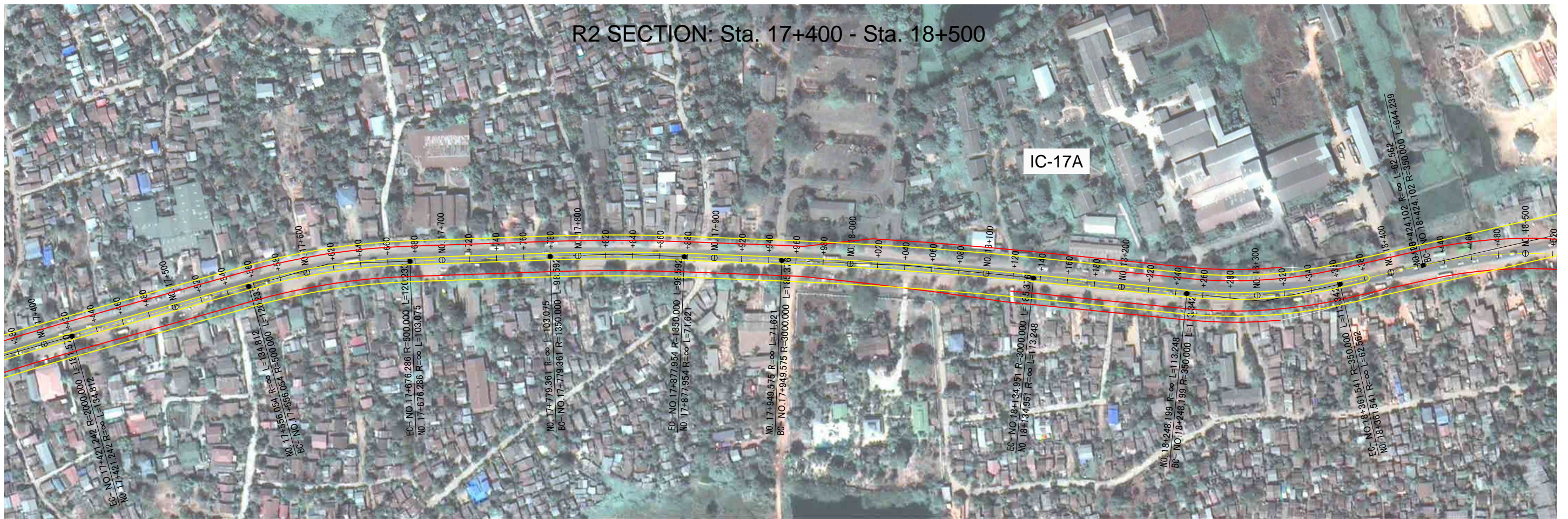








R2 SECTION: Sta. 17+400 - Sta. 18+500

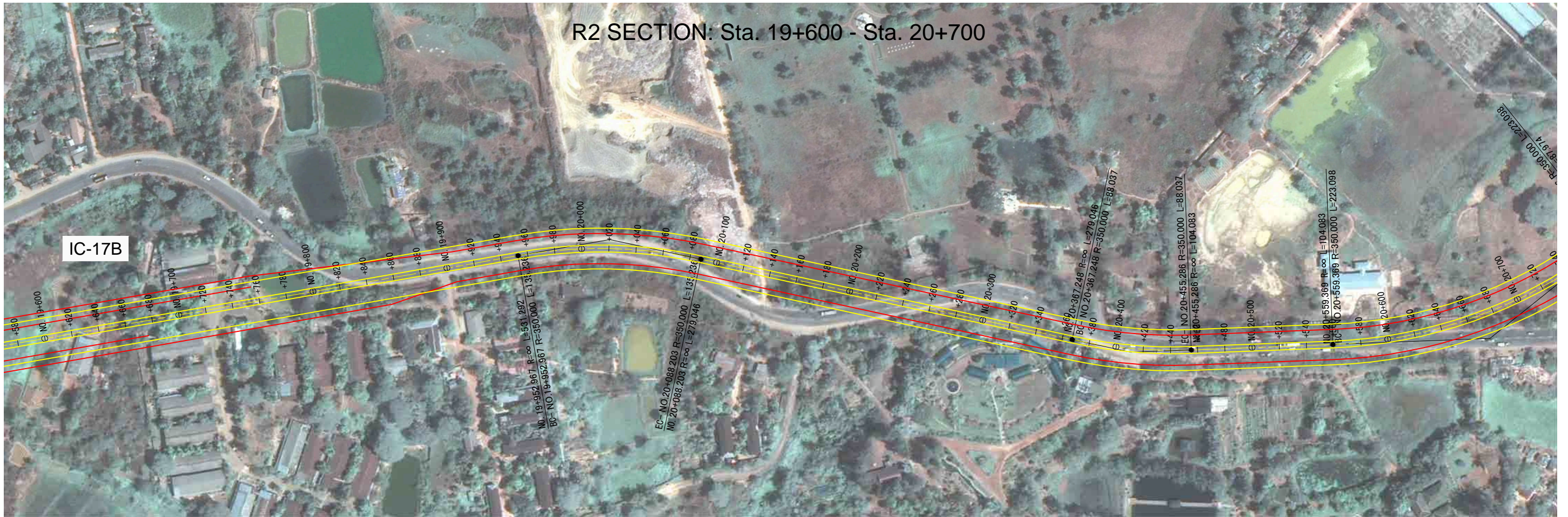


R2 SECTION: Sta. 18+500 - Sta. 19+600

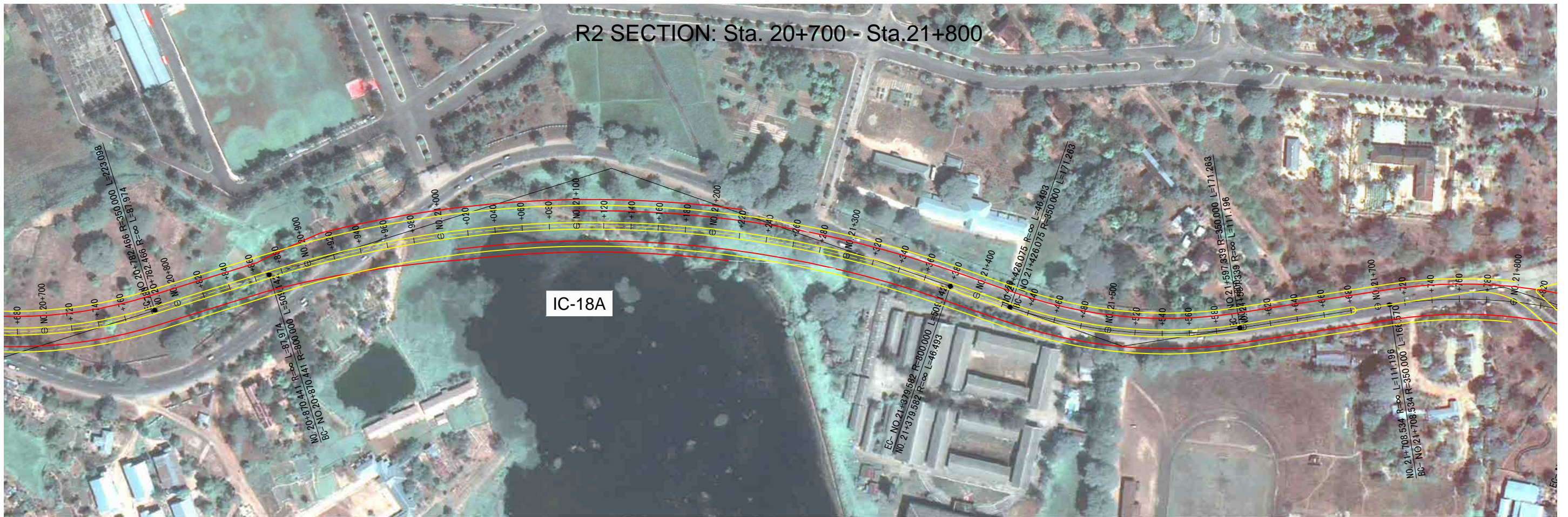




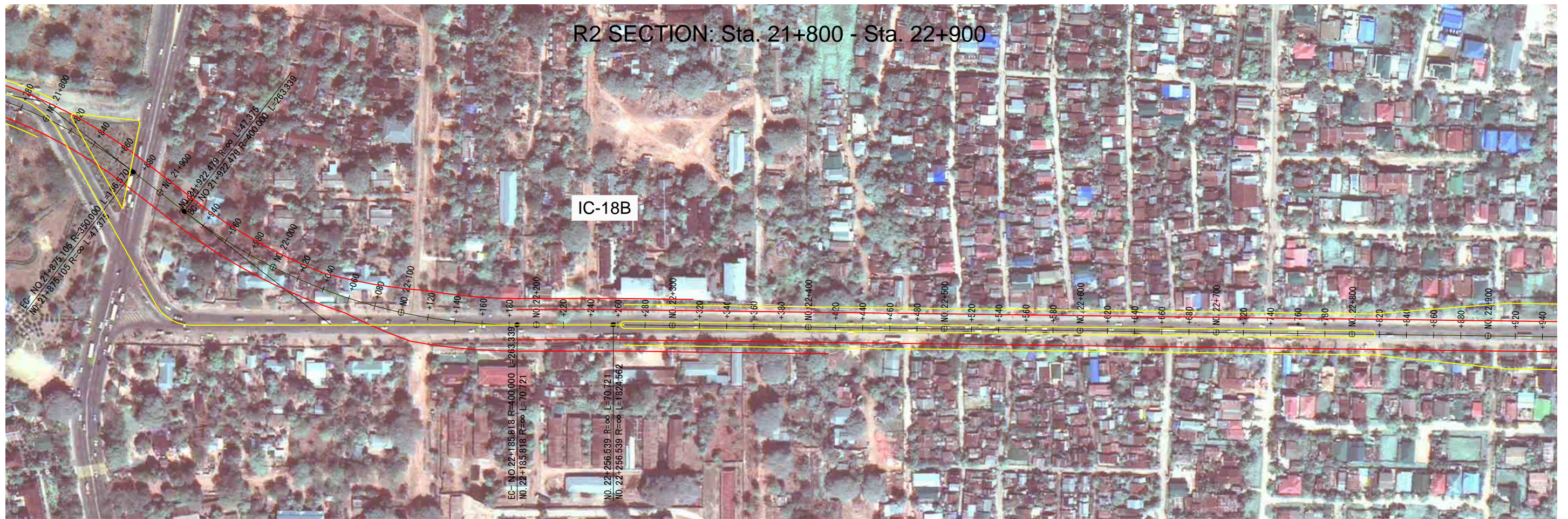
R2 SECTION: Sta. 19+600 - Sta. 20+700



R2 SECTION: Sta. 20+700 - Sta. 21+800









R2 SECTION: Sta. 24+000 - EP

