

添付－9

ドラフトファイナルレポート
プレゼンテーション

DATA COLLECTION SURVEY ON GEOTHERMAL DEVELOPMENT IN DJIBOUTI

Draft Final Report Presentation

November, 2014
Sheraton Hotel, Djibouti



JICA Survey Team

- Nippon Koei co. Ltd.,
- Geothermal Engineering Co. Ltd.
- Sumiko Resources Exploration and Development Co. Ltd. (SRED)

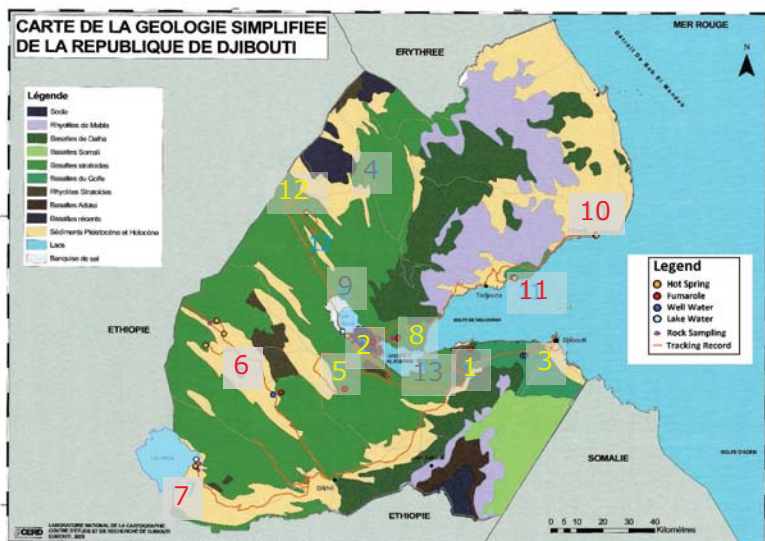
Acknowledgement

- The field survey was conducted jointly with the ODDEG and CERD in the hottest months of May and June, 2014.
- Our greatest thanks to be directed toward the ODDEG, who made various arrangements, as the counterpart.
- The same thanks directed to the CERD, who conducted geochemical analysis and useful technical communications also.
- We would also appreciate all the other Djiboutian officers who provided us with kind cooperation.

2

JICA-TEAM: NK, Geo-E, SRED

Location Map



1	Arta
2	Asal
3	Djibouti
4	Dora
5	Gaggade
6	Hanle
7	Lac Abhe
8	Nord Goubet
9	Nord Lac Asal
10	Obock
11	Rouweli
12	Sakalol
13	Sud Goubet

3

JICA-TEAM: NK, Geo-E, SRED

Contents of the Presentation (1/2)

- Background, Purpose
- Background Information
 - Present Situation of the Electric Sector
 - National Development Strategy
- Institutional Set-up: Our understandings
 - ODDEG
 - CERD
- Donors' Assistance
- Reconnaissance Survey and Analysis Conducted
 - Remote Sensing
 - Geology – Rock thin sections, XRD, XRF
 - Geochemistry

4

JICA-TEAM: NK, Geo-E, SRED

Contents of the Presentation (2/2)

6. Selection of Prospective Sites (Resource)
7. Socio-Environmental Review
8. Proposed Site Selection for a Next Step of JICA's Assistance
9. Proposed Approach up to Test Drilling
10. Way Forward – General Issues
11. Data Base
12. Photos

5

JICA-TEAM: NK, Geo-E, SRED

1. Back Ground, Purposes

- Background
 - ① Djibouti imports more than 80 % of electric energy from Ethiopia as of 2013;
 - ② No indigenous energy is available at present, **except geothermal energy** for electric generation;
 - ③ Geothermal development is **a top priority**.
- Activities and Purposes
 - ① To collect existing **information** and its review,
 - ② To conduct a **reconnaissance survey**,
 - ③ To analyze the data collected **for consideration of Japanese assistance approach** on geothermal development

6

JICA-TEAM: NK, Geo-E, SRED

Background Information

- Why is geothermal energy to be developed in Djibouti?



JICA Survey Team

- Nippon Koei co. Ltd.,
- **Geo**thermal **E**ngineering Co. Ltd.
- **S**umiko **R**esources **E**xploration and **D**evelopment Co. Ltd. (SRED)

7

JICA-TEAM: NK, Geo-E, SRED

Present Situations of the Electric Sector

- Installed capacity:
 - Diesel engine generation system
 - Rated: 135 MW, Operational: 101 MW
- Energy supply and self-sufficiency

	2011	2012	2013
(a) Total Supply (GWh)	232.0	387.0	354.9
(b) Self Supply (GWh)	77.0	24.0	67.5
Self- Sufficient Ratio (%)	33.2	6.2	19.0

Source: EdD

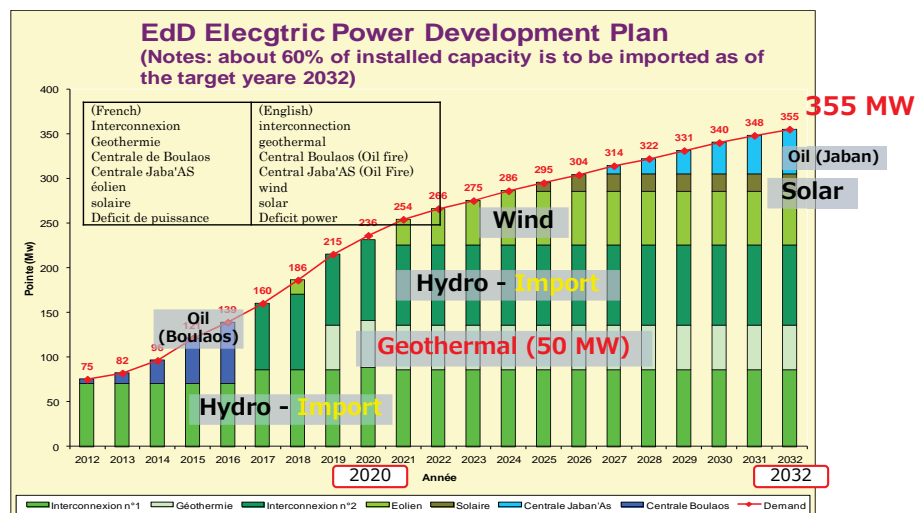
- Note: Djibouti started to import Electric energy **from Ethiopia** in November 2011

8

JICA-TEAM: NK, Geo-E, SRED

National development strategy

- VISION Djibouti 2035
 - The Djiboutian country revolutionizes 100% of thermal power generation dependence of 2010, for **100% of renewable energy use by 2020**.



9

Institutional set-up: Our understanding

1. ODDEG
2. CERD



JICA Survey Team

- Nippon Koei co. Ltd.,
- Geothermal Engineering Co. Ltd.
- Sumiko Resources Exploration and Development Co. Ltd. (SRED)

10

JICA-TEAM: NK, Geo-E, SRED

Institutional set-up: ODDEG

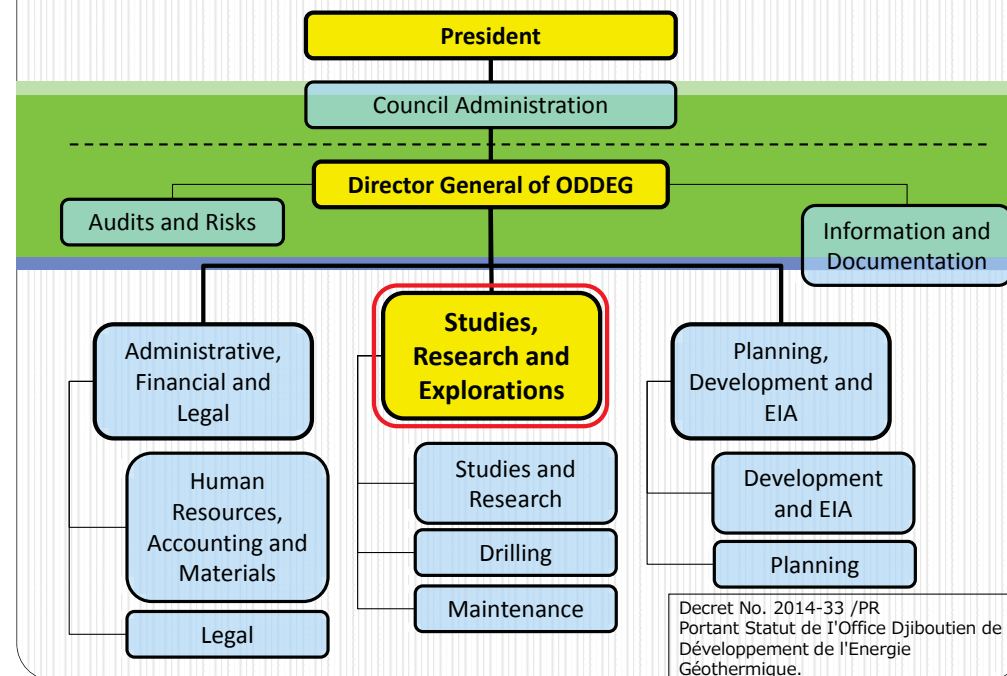
Organization in charge of Geothermal Development:

- **ODDEG (Djiboutian Office for Development of Geothermal Energy) was newly established in 2014**
- Task: Up to resource confirmation (test wells), thereafter IPP is to be introduced.

11

JICA-TEAM: NK, Geo-E, SRED

ODDEG Organization, Decret No. 2014-33 /PR



Officers already assigned to ODDEG

Officers of ODDEG (as of July 2014)

ODDEG	Former assignment	Person
Director	ISERST → EdD	1
Geophysicist (Ph.D)	CERD	1
Geophysical Engineer	CERD	1
Physicist	CERD	1
Reservoir Engineer (Ph.D)	CERD	1
Technician	CERD	1
Drilling Engineer	MENR	3
Planning	MENR	1
Development	MENR	1
total		11

Corrected

13

JICA-TEAM: NK, Geo-E, SRED

ODDEG: Major Activities being conducted

Major Activities being conducted:

- The ODDEG handles the preparation work for the **Assal test well drilling project**.
- **Ten 10 officers** were officially transferred to ODDEG (July, 2014). Among those, **five professionals were from CERD**.
- The **new office of ODDEG** is now being constructed at P.K. 20, where then "Agriculture zone" was located.
- A set of **drilling rig** is being procured from Turkey.

14

JICA-TEAM: NK, Geo-E, SRED

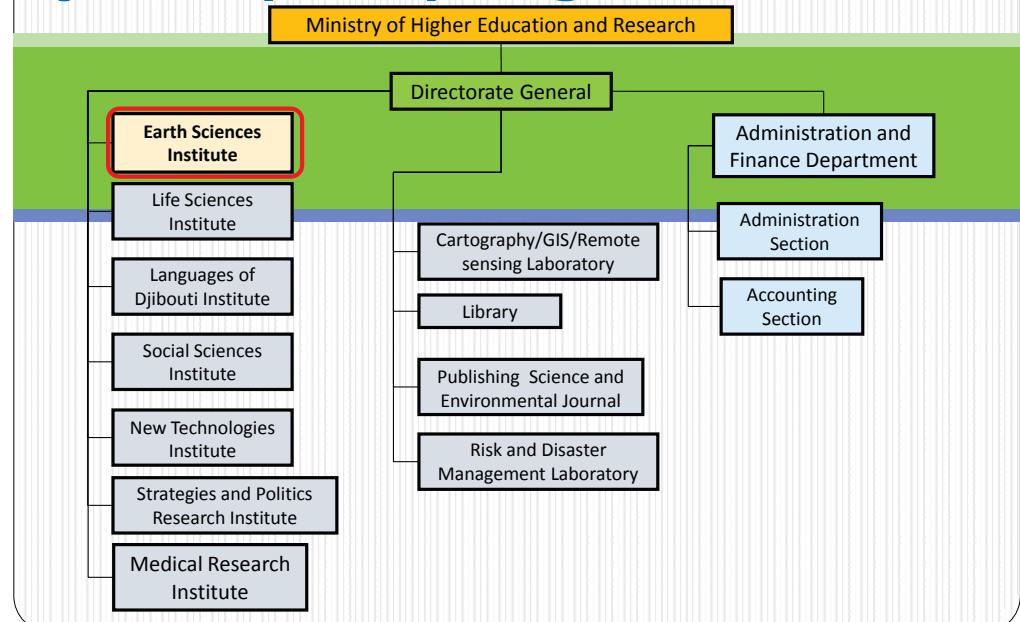
Institutional set-up: CERD

- ISERST was first established in 1979.
- ISERST was re-organized to CERD in 2001.
 - CERD is **the Djiboutian national researching center** consisting of seven (7) research institutes.
 - **Earth Science Institute** is the one that conducts scientific researches on earth sciences.

15

JICA-TEAM: NK, Geo-E, SRED

Center of Study and Research of Djibouti (CERD): Organization



CERD: Earth Sciences Institute



Hydrogeology

Geology

Geochemistry

Geothermal

Applied Geophysics

New Energy and Energy Management

Geophysical Observatory Of Arta

Earth Sciences Institute

AS of June, 2014

	PhD	Master	Bachelor	others	Subtotal
Geology	2		1		3
Geothermal	1				1
Metallogeny	1				1
Geophysics	1	2			3
Cartography		3			3
Risk Management		1			1
Hydrogeology	1	1		3	5
Geochemist	1	4		2	7
Seismology		1		3	4
Drilling				2	2
Total	7	12	1	10	30

17

JICA-TEAM: NK, Geo-E, SRED

CERD: Geochemical Equipment Available

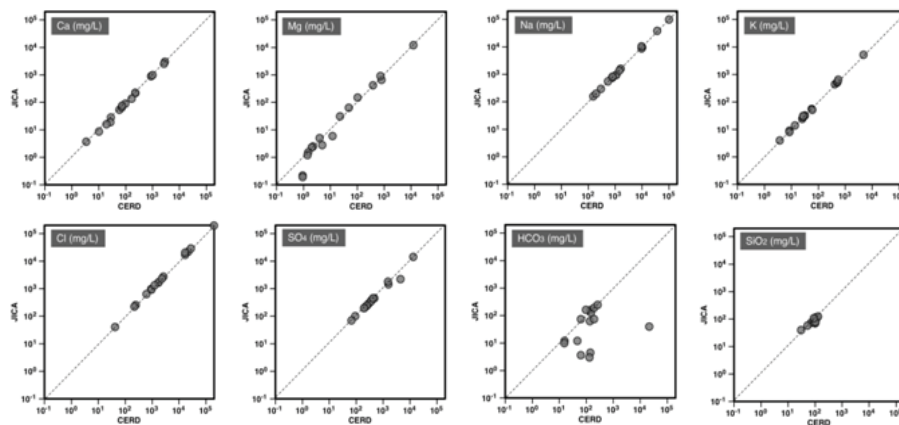
	Equipment	Model	Nos.	Notes
1	GC-MS (Gas chromatography-mass spectrometry)	Agilent Technologies 7890A&5975C	1	
2	ICP-OES (Inductively coupled plasma optical emission)	HORIBA A5500	1	
3	HPLC (High performance liquid chromatography)	DIONEX ICS3000	1	Ion chromatography
4	Spectrophotometer (UV-VIS)	Lab Medic UV-VIS 1129	1	
5	Spectrophotometer (VIS)	JENWAY 6310	1	
6	Spectrophotometer (FT-IR) (Fourier-Transform-InfraRed-spectroscopy photometer)	BRUKER ALPHA-P	1	
7	FL-AAS (Flame Atomic absorption spectrometer)	AGA LABS 1381	1	Na and K only measurable
8	FL-AAS (Flame Atomic absorption spectrometer)	GBC SB-906	1	Not operational (Hollow cathode lumps N/A)
9	pH. Conductivity meter	-	1	
10	Microscope	-	1	
Others available				
Muffle Furnace (1), Electric Balance (2), Ball Mill (1), Incubator for BOD (2), Oven (2), Deionizer (1), Ultra Water Purifier (1)				

Major items of water analysis: Generally operational
 Gas analysis: Not available
 FL-AAS: Hollow cathode lumps not available
 Consumables (gas, reagents, glassware): running short

18

JICA-TEAM: NK, Geo-E, SRED

Counter-checking: Lab analysis results of CERD and JICA



Most of analysis results are in good agreement.

19

JICA-TEAM: NK, Geo-E, SRED

CERD Geochemistry: Issues identified

- **Budgetary constraints** partially due to free-services to other governmental organizations,
- **Techniques to be enhanced**, using updated analysis technologies, and
- Technical supports was requested to JICA

20

JICA-TEAM: NK, Geo-E, SRED

CERD(→ODDEG?): Geophysical survey equipment available

Survey	Type	Producer	Quantity	Status	Installed Year
MT	ADU-07e (Receiver)	Metronix	2	Good	2010, 2012
	MFS-06e (Induction Coil)	Metronix	6 (2 sets)	Good	2010, 2012
	EFP-06	Metronix	18 (3 sets)	Good	2010, 2012, 2014
TEM	Terra TEM	Monex GeoScope	1	Good	2012
Gravity	CG-5 Autograv	Scintrex	1	Good	2013
Electric	McOHM Profiler-4	OYO	1	Good	2014

“Metronix” is usually used **for academics purposes**. Few Japanese industrial practitioners are familiar with it.

21

JICA-TEAM: NK, Geo-E, SRED

CERD: Geophysical survey conducted for geothermal

Survey	Type	Producer	Quantity
N. Goubet	TDEM	2010	32
	MT		30
Lac Abhe	TDEM	2011	35
	MT		34
	Gravity	2012	85
Obock	TDEM	2013	46
	MT		46
	Gravity		122

- **Pre-feasibility studies** were conducted for these prospectives.
- The studies were not made available for the JICA Team for review.

22

JICA-TEAM: NK, Geo-E, SRED

CERD (→ODDEG) Geophysical: Issues identified

- **Not sufficient computer software** available for TEM and MT data analysis: i.e. computer software for 2D analysis not available,
- **Review** of the existing MT-survey results to be **needed** for further capacity enhancement,

Note: Japanese Consultants are not familiar with the Metronix MT survey equipment; for rather academic use than practical use.

23

JICA-TEAM: NK, Geo-E, SRED

CERD Geology: Requests to JICA



- CERD wishes to have the following equipment for geological analysis
 - Rock thin section making facility
 - Polarized microscope
 - Stereo microscope
 - XRD equipment
 - XDF equipment
 - Fluid inclusion analysis equipment

24

JICA-TEAM: NK, Geo-E, SRED

Donors' Assistance



JICA Survey Team

- Nippon Koei co. Ltd.,
- Geothermal Engineering Co. Ltd.
- Sumiko Resources Exploration and Development Co. Ltd. (SRED)

25

JICA-TEAM: NK, Geo-E, SRED

Other Donors' Assistance



Organization	Programs
UN-GTP	1. Past Record (1989 - 2013):
	Short Course 20 person
	Six months Trainings 9 person
	Master degree course 1 person
	PhD 1 person
	2. This Year (2014)
	Short Course 3 person
ICEIDA	Six months Trainings 2 person
	Master degree course -
ICEIDA	1. Technical Training for drilling Supervision (2014 - 2016)
	2. Knowledge improvement of geothermal exploration and review of studies at Arta and Gaggade
	3. Improvement of management capacity of geothermal development
GRMF	Application was submitted to GRMF for confirmation drilling at Hanle and the Nord Ghoubbet , but not accepted due to clerical reasons.
WB, AfDB-ADF, SEFA, GEF, OFID, AFD, ESMAP	Test drilling at Asal-Fiale site
	- Project Managing Director
	- Engineering Consultant for technical supervision
	- Drilling contractor
<div> <div> 1. WB: World Bank</div> <div>2. ADF: African Development Bank</div> <div>3. SEFA: Sustainable Energy Fund for Africa implemented by AfDB</div> <div>4. GEF: Grobal Environment Facility</div> <div>5. AFD: Agence Francaise de Developpemet</div> <div>GGDP: Global Geothermal Development Plan through ESMAP</div> <div>6. ESMAP: Energy Sctore Management Assistance Program</div> </div> <div> <div>7. OFID: OPEC Fund for Internationla Development</div> <div>SEFA: A joint initiative of the Danish government and the Energy, Environment and Climate Change Department (ONEC) of AfDB</div> <div>ADF: the concessional window of the AfDB Group.</div> </div>	

26

Reconnaissance Survey and Analysis Conducted

General Purpose:

Verification/Confirmation of the existing data as a base data for possible future JICA assistance



JICA Survey Team

- Nippon Koei co. Ltd.,
- Geothermal Engineering Co. Ltd.
- Sumiko Resources Exploration and Development Co. Ltd. (SRED)

27

JICA-TEAM: NK, Geo-E, SRED

Remote sensing

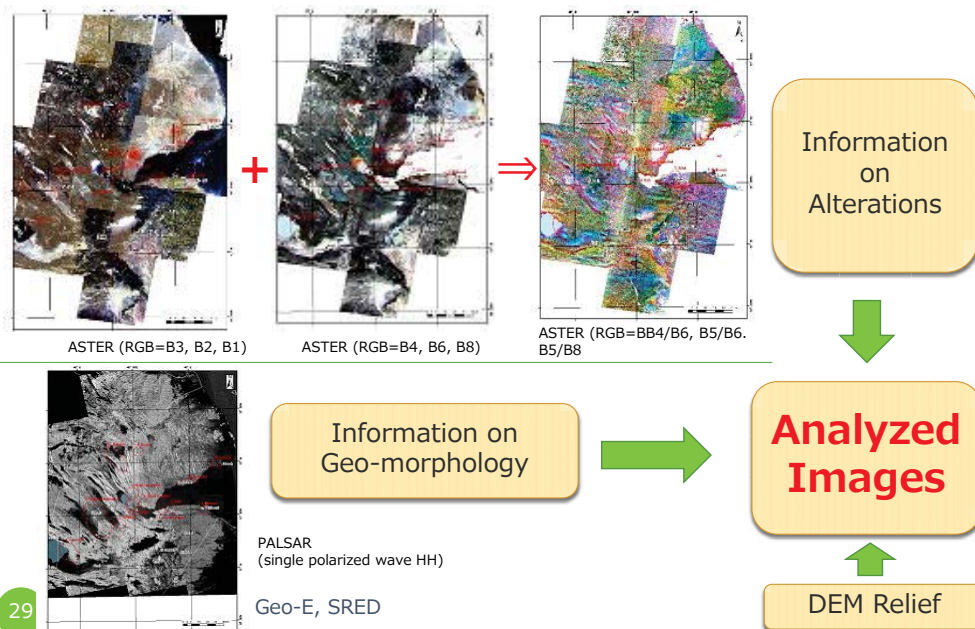
Photo: a giant travertine in Lac Abhe

28

JICA-TEAM: NK, Geo-E, SRED

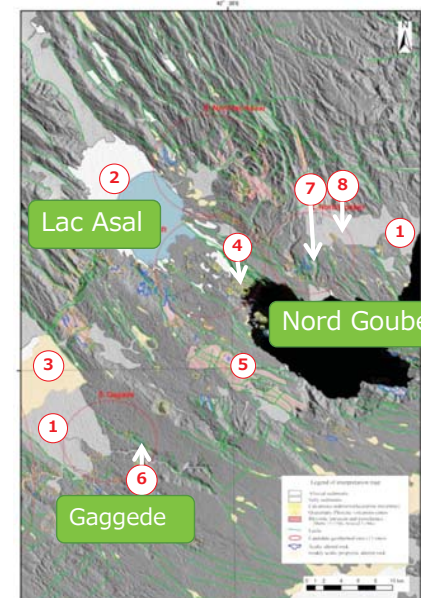
Remote Sensing Analysis

Analysis process (ASTER Image, PALSAR Image)



29

Remote Sensing Analysis



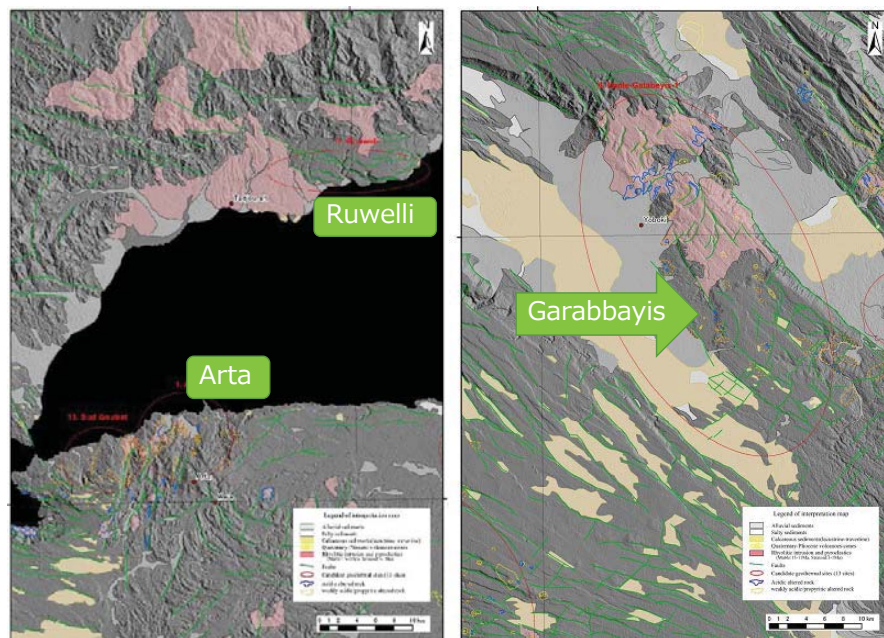
What are identified?

- ① Alluvial sediments
- ② Salty sediments
- ③ Calcareous sediments (Lacustrine-travertine)
- ④ Volcanic cones
- ⑤ Rhyolitic intrusion and/or Pyroclastic
- ⑥ Faults
- ⑦ Acidic Altered spot
- ⑧ Weakly acidic propylitic altered spot

30

JICA-TEAM: NK, Geo-E, SRED

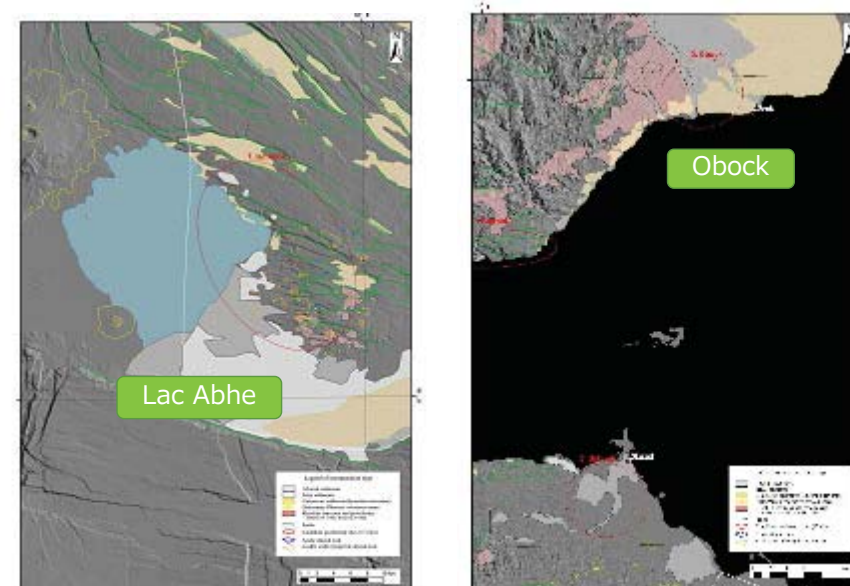
Remote Sensing Analysis



31

JICA-TEAM: NK, Geo-E, SRED

Remote Sensing Analysis



32

JICA-TEAM: NK, Geo-E, SRED

Remote Sensing Summery of the Results

Acidic altered rock, or Weakly acidic altered rock;	Not particular alteration identified
Arta Asal Gaggade-Taassa Hanle-Garabbayia Lac Abhe Nord Goubet Nord Lac Asal Rouweli Sud Goubet	Djibouti-Awrofoul Dorra Obock Salalol-AsbouDara

33

JICA-TEAM: NK, Geo-E, SRED

Geology-Rock thin sections, XDR, XRF

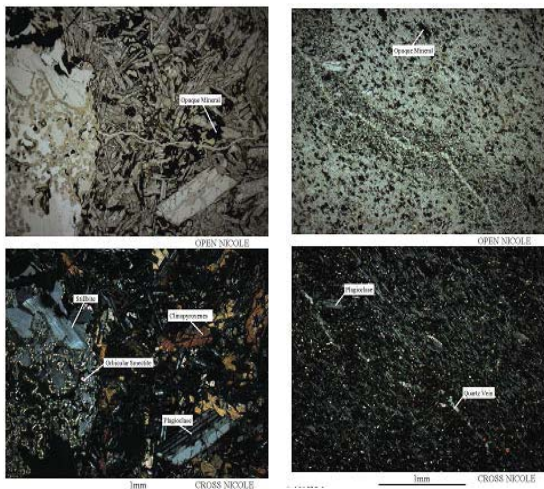
Purposes:

- Observation of rock thin sections
 - Visual observations of rock minerals/textures
- XRF: X-Ray Fluorescence analysis
 - Rock classification (TAS: Total Alkaline-Silica)
- XRD: X-Ray Diffraction analysis
 - Alteration clay mineral identifications

34

JICA-TEAM: NK, Geo-E, SRED

Rock thin sections



Visual observation of
rock forming
minerals/textures
under polarized
microscope

General
Observations

- Alteration
minerals are
observed: such as
Secondary Qz,
Calcite, Zeolite,
clay and others.

➔ Rock samples
have generally
undergone
alteration process.

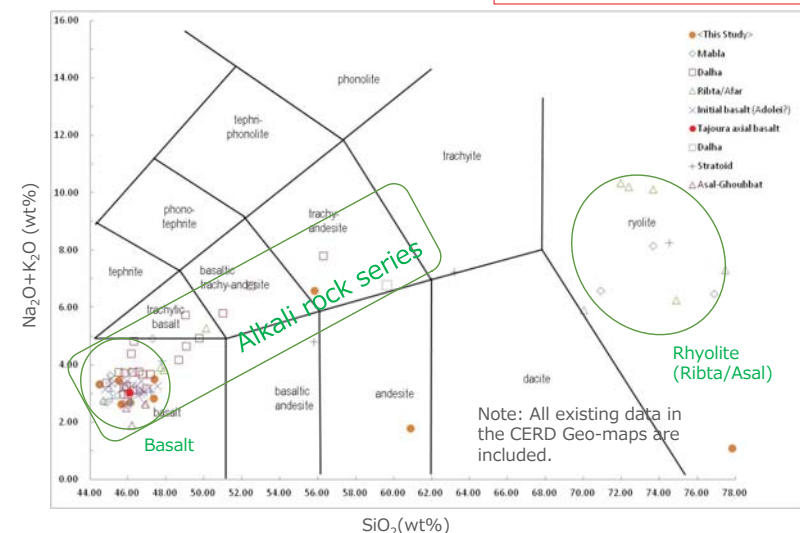
- Left: Course grained Basalt (Garabbayis)
- Right: Andesite (N. Goubet-Anaale)

35

JICA-TEAM: NK, Geo-E, SRED

XRF : TAS Diagram

Rock Classification

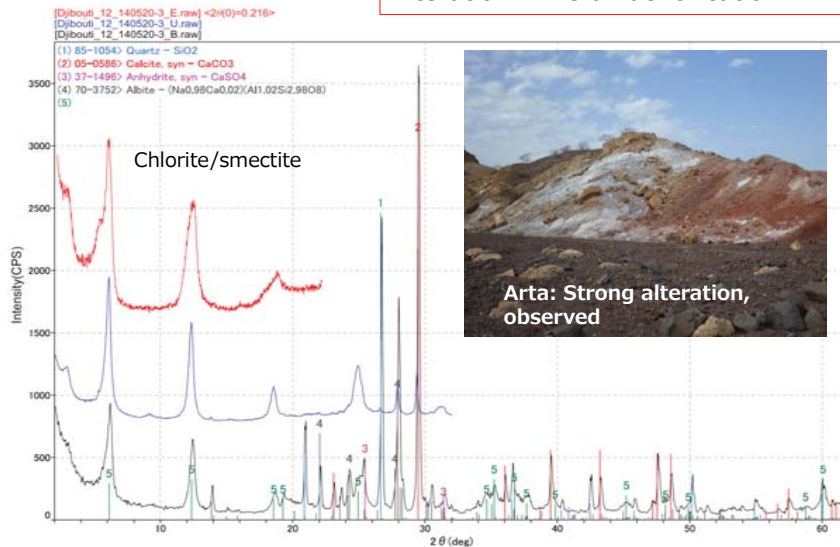


36

JICA-TEAM: NK, Geo-E, SRED

XRD: An example (Arta)

Alteration mineral identification



37

JICA-TEAM: NK, Geo-E, SRED

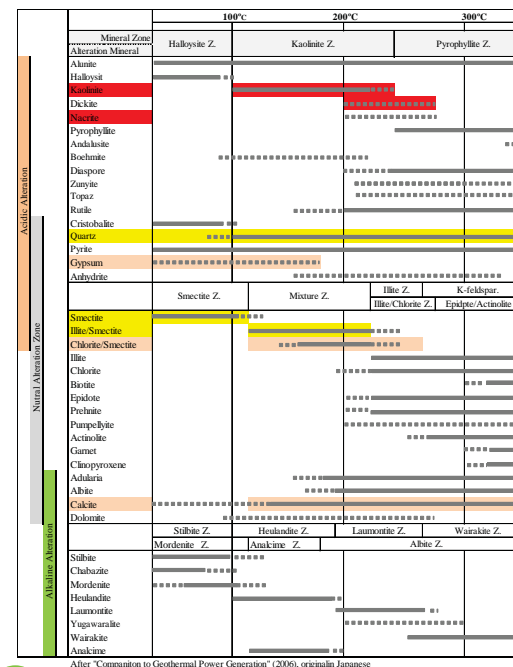
Geothermometer

Hydro-thermal alteration clays:

→ a guide of past-underground temperatures under which the clays formed.

Clays Identified:

Kaolinite, Nacrite, Quartz, Smectite, Illite/Smectite, Gypsum, Calcite Chlorite/Smectite,



After "Companion to Geothermal Power Generation" (2006), original Japanese

38

JICA-TEAM: NK, Geo-E, SRED

Summary – Clay Geothermometer

Site Name	Rock Name	Clay Mineral				Zeolite group				others		Notes	Clay mineral Formation Temperature (°C)
		Smc	Mix	Chl/Ser	Kao/Nac	Sti	Nat	Lau	Gyp	Cal	Qz		
N. Goubet	Calcite											Cal. only	-
N. Goubet	calcite											Cal. only	-
Arta	Gypsum	○		○					○	+	+	Smc-Chl, Gyp (vein)	150-200
Arta	Rhyolite?	○	○							○	+	Smc-Mix, Chl	100-150
Arta	White clay				○						○	Nac.	200-250
Arta	White clay		○		○						○	Nac. & mix.	200-250
Arta	Gypsum								○			Gyp. only	-
Asal (2km east)	White clay, layered			○						○		Chl-Cal	150-200
Lac Asal	White clay								○			Gyp. only	-
N. Goubet_Anaale	Andesite	○									+	Smc-Qz	100-150
N. Goubet_Anaale	White vein, calcite	○								○	+	Smc-Cal	100-150
Hanle-Garabbayis	Basalt	○	○	○		○	○	○				Smc-Chl+Zeolite	150-200
Hanle-Yoboki (hill)	Rhyolite	○	○	○							○	Smc-Mix-Chl-Qz	150-200
Hanle-Yoboki (hill)	Rhyolite									+	○	Qz-Cal	-
Gaggade-Taassa	Reddish clay				○						○	Nac.	200-250
Gaggade-Taassa	Rhyolite	○								+	+	Smc-Cal-Qz	100-150

Arta, Gaggade → max. 200 – 250 °C
Garabbayis → max. 150 – 200 °C

An evidence of hydro-thermal activities in the past.

39

JICA-TEAM: NK, Geo-E, SRED

Geochemistry



JICA Survey Team

- Nippon Koei co. Ltd.,
- Geothermal Engineering Co. Ltd.
- Sumiko Resources Exploration and Development Co. Ltd. (SRED)

40

JICA-TEAM: NK, Geo-E, SRED

List of Samples

No.	Sampling location	Fumarolic gas	Hot spring	Well	Lake
1.	Arta	1	0	0	0
2.	Asal	1	1	0	1
3.	Djibouti	0	0	2	0
4.	Dorra	Failed to sample due to road damage			
5.	Gaggade	1	0	0	0
6.	Hanle	1	3	1	0
7.	Lac Abhe	0	2	0	1
8.	Nord Goubet	1	1	0	0
9.	Nord Lac Asal	Failed to sample due to no access way			
10.	Obock	0	2	0	0
11.	Rouweli	0	1	1	0
12.	Sakalol	0	1	0	0
13.	Sud Goubet	Failed to sample due to no access way			
Number of samples		5	11	4	2

41

JICA-TEAM: NK, Geo-E, SRED

Chemical Analysis Items

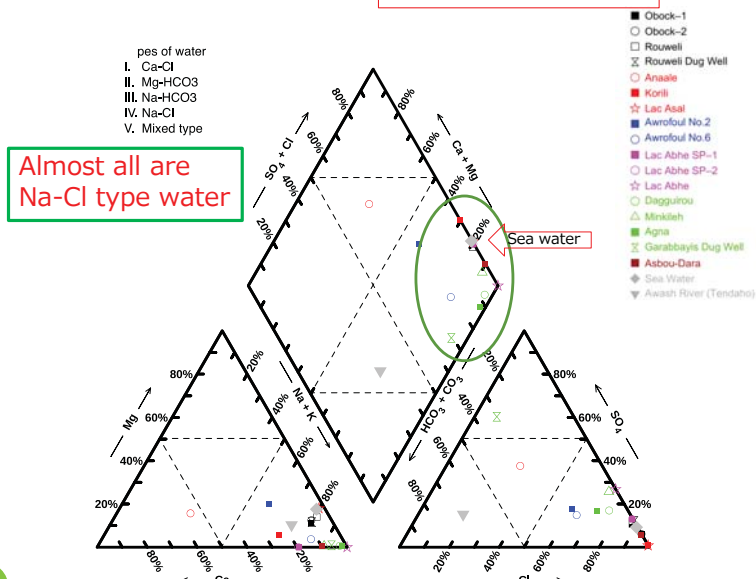
Fumarolic gas samples	H ₂ O, H ₂ S, CO ₂ , H ₂ , N ₂ , CH ₄ , O ₂ , He, Ar, ³ He/ ⁴ He, ⁴ He/ ²⁰ Ne, and δ ¹³ C(CO ₂)
Water samples	pH, Conductivity, Li, Na, K, Ca, Mg, Cl, SO ₄ , CO ₂ , H ₂ S, SiO ₂ , B, Fe, Al, As, Hg, δD, and δ ¹⁸ O

42

JICA-TEAM: NK, Geo-E, SRED

Trilinear Diagram

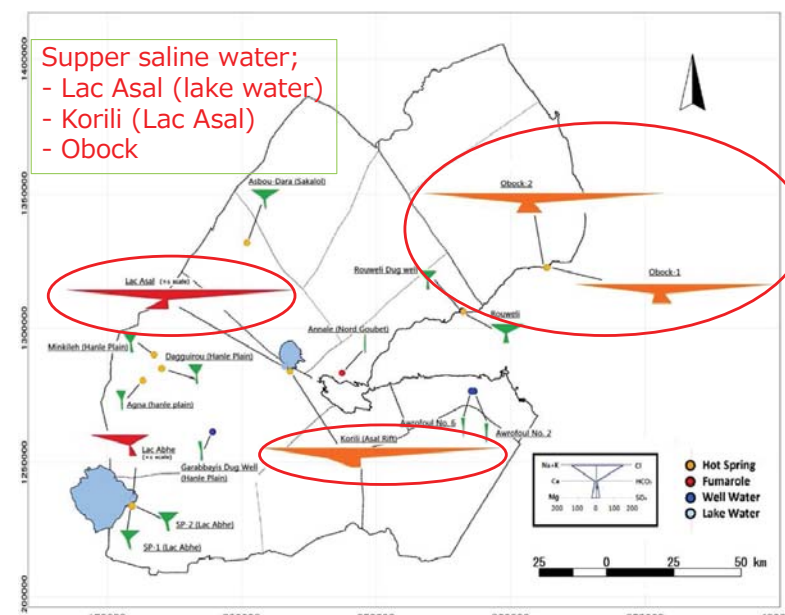
Water Classification



43

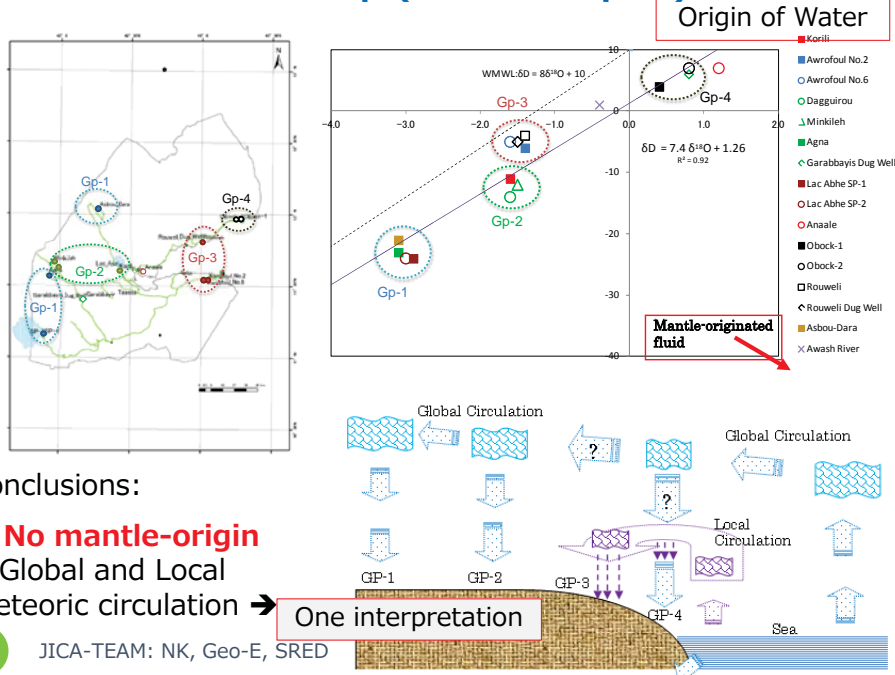
Stiff Diagram

Water Classification

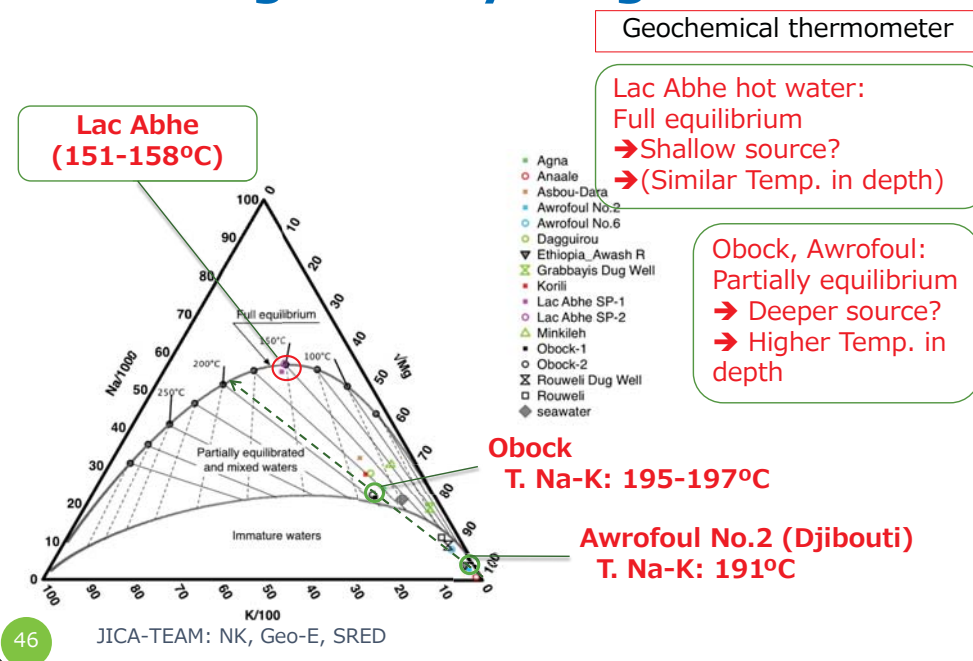


44

δD - $\delta^{18}O$ Relationship (water samples)



Na-K-Mg Ternary Diagram

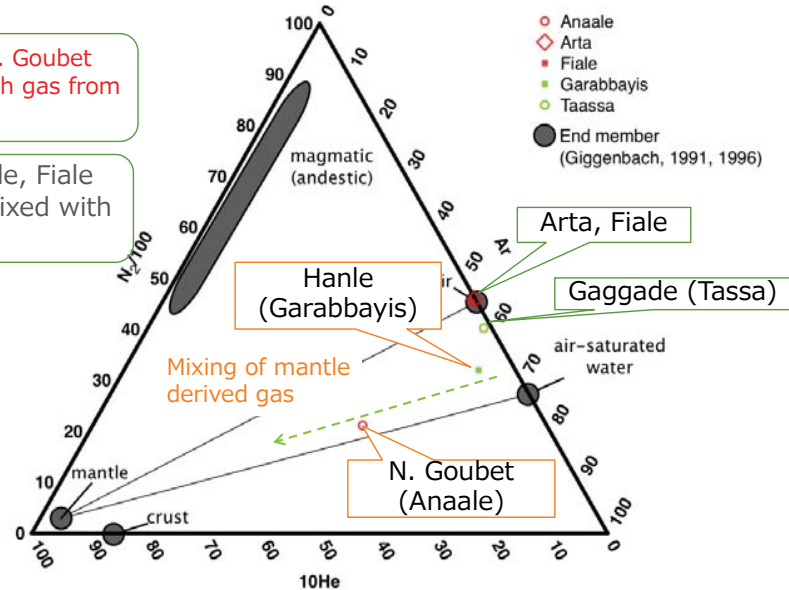


He-Ar-N₂ Ternary Diagram for Fumarolic Gas Samples

Mixture with mantle gas

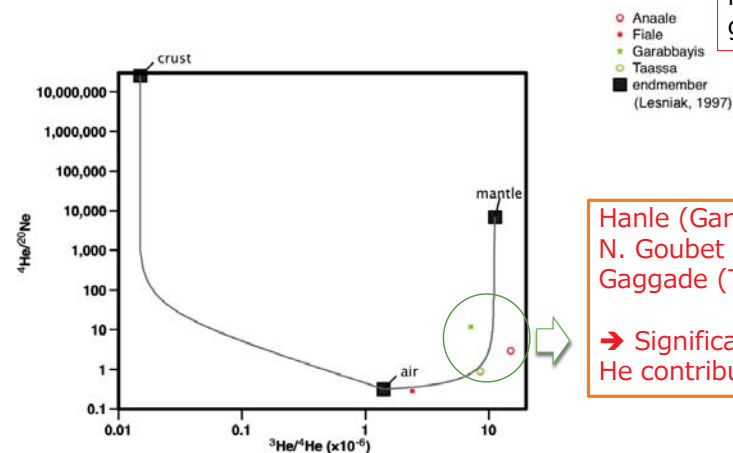
Garabbayis, N. Goubet
→ mixture with gas from mantle

Atra, Gaggade, Fiale
→ Largely mixed with air



Correlation of $^3\text{He}/^4\text{He}$ and $^4\text{He}/^{20}\text{Ne}$ for Fumarolic Gas Samples

Mixture with mantle origin gas



→ Gas Geothermometer (T-CO₂/Ar, T-CH₄/CO₂)

Hanle(Garabbayis): 159-266°C, N.Goubet (Anaale): 228-323°C

JICA-TEAM: NK, Geo-E, SRED

48

Summary of Geochemical Survey

No. c	Sampling location	Fumarole		Water					Evaluation
		Feature	T CH ₄ /CO ₂	Feature	Cond. (mS/m)	T chalcedony	T Na-K	T Na-K-Ca	
1.	Arta	Very weak (Air mixed)	-	-	-	-	-	-	-
2.	Asal	Slightly mixed with Mantle derived gas	-	Na-Cl, Meteoric	5,050	96	177	167	Prospective
3.	Djibouti	-	-	Na-Cl, Meteoric	121 -156	103 -119	169 -191	136 -143	Probability
5.	Gaggade	Significantly mixed with Mantle derived gas	-	-	-	-	-	-	Prospective
6.	Garabbayis	Significantly mixed with Mantle derived gas	266	-	-	-	-	-	Prospective
	Hanle	-	-	Na-Cl, Meteoric	283 -396	92 -103	126 -173	116 -165	
7.	Lac Abhe	-	-	Na-Cl, Meteoric	581 -582	115 -124	151 -158	130 -136	
8.	Nord Goubet	Significantly mixed with Mantle derived gas	323	-	-	-	-	-	Prospective
10.	Obock	-	-	Na-Cl, Meteoric	4,150 -4,820	90-93	195 -197	192 -193	Probability
11.	Rouweli	-	-	Na-Cl, Meteoric	896	79	160	152	
12.	Sakalol	-	-	Na-Cl, Meteoric	750	115	164	150	

JICA-TEAM: NK, Geo-E, SRED

Selection of Prospective Sites

- Survey on Natural Conditions Explained
 - Satellite Image Analysis
 - Geological Reconnaissance
 - Site survey
 - Rock Thin Section Observation
 - XRF
 - XRD analysis for Alteration Clay Identification
 - Geochemical Analysis
- Selection of prospective sites for a next step of survey.



JICA Survey Team

- Nippon Koei co. Ltd.,
- Geothermal Engineering Co. Ltd.
- Sumiko Resources Exploration and Development Co. Ltd. (SRED)

50

JICA-TEAM: NK, Geo-E, SRED

Comparison of the Sites Surveyed

No.	Survey Site	Regional Geology	Geoth.I Alteration		Fumarolic Gas	Geochemical therm.	Evaluation	
		Geological Characteristic	Intensity	Temp. (°C)		Alkali Temp. (°C)		
1	Arta	Associated with Rhyolite	severest	max. 200-250	(Air mixed)	-	★Good	A-3
2	Asal_Fiale	Recent basaltic lava	-	-	Mixed with mantle origin gas	-	(★Good)	(Not for evaluation)
	Asal_Koril	-	-	-	-	116-177	poor	-
3	Djiboubi_Awroful No.2	Basalt	-	-	-	52-191	(★Fair)	C
4	Dorra	Basalt	Not accessible		-	-	(Not accessible)	
5	Gaggade_Taassa	Associated with Rhyolite	severest	Max. 200-250	Mixed with mantle origin gas	-	★good	A-1
6.1	Hanle-Garabbayis	Neighboring larger scale Rhyolite	severe	150-200	Mixed with gas of mantle origin T(CH ₄ /CO ₂)=266°C	-	★good	A-1
6.2	Hanle-Dagguirou	Basalt	-	-	-	113-170	Poor	-
6.3	Hanle_Minkileh	Basalt	-	-	-	91-126	Poor	-
6.4	Hanle-Agna	Basalt	-	-	-	107-173	Poor	-
7	Lac Abhe	Basalt and lake deposit	-	-	-	136-158	Poor	-
8	Nord Goubet	Dotted rhyolite and andesite	fair	100-150	Mixed with gas of mantle origin T(CH ₄ /CO ₂)=323°C	-	★good	A-2
9	Nord Lac Asal	Basalt	Not accessible		-	-	(Not accessible)	
10	Obock	Calcareous deposit	-	-	-	115-197	(★Fair)	B
11	Rouweli	Basalt	-	-	-	75-160	poor	-
12	Sakalol_Asbou-	Basalt	-	-	-	116-164	poor	-
13	Sud Goubet	Basalt	Not accessible		-	-	(Not accessible)	

WB

51

JICA-TEAM: NK, Geo-E, SRED

Prospective Sites Selected by Natural Conditions – 6 Sites

No.	Site	Regional Geology	Geoth.I Alteration		Fumarolic Gas	Geochemical therm.	Evaluation	
		Geological Characteristic	Intensity	Temp. (°C)		Alkali Temp. (°C)		
1	Arta	Associated with Rhyolite	Severest	max. 200-250	(Air mixed)	-	★Good	A-3
3	Djibouti_Awroful No.2	Basalt	-	-	-	52-191	(★Fair)	C
5	Gaggade	Associated with Rhyolite	Severest	Max. 200-250	Mixed with mantle origin gas	-	★good	A-1
6.1	Garabbayis	Neighboring larger scale Rhyolite	Severe	150-200	Mixed with mantle origin gas T(CH ₄ /CO ₂)=266°C	-	★good	A-1
8	Nord Goubet	Dotted Rhyolite and andesite	Fair	100-150	Mixed with mantle origin gas T(CH ₄ /CO ₂)=323°C	-	★good	A-2
10	Obock	Calcareous deposit	-	-	-	115-197	(★Fair)	B

52

JICA-TEAM: NK, Geo-E, SRED

Socio-Environmental Review



JICA Survey Team

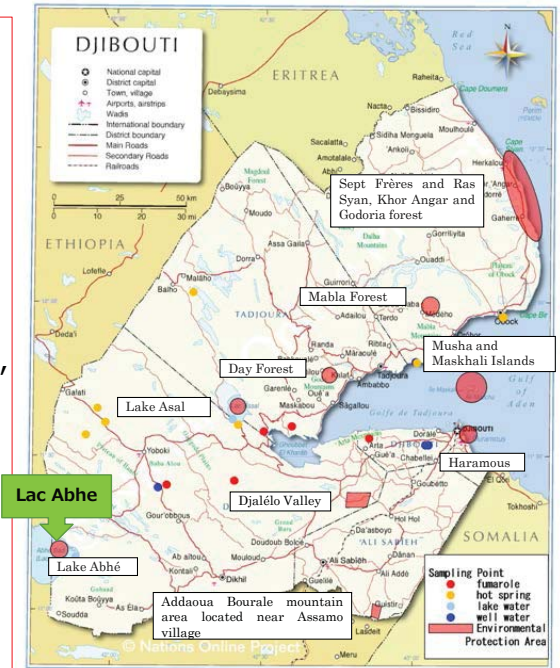
- Nippon Koei co. Ltd.,
- Geothermal Engineering Co. Ltd.
- Sumiko Resources Exploration and Development Co. Ltd. (SRED)

53

JICA-TEAM: NK, Geo-E, SRED

Protected Area

- **Nine (9) Protected Areas**
- **Demarcation** of the protected areas is **not established** (except Djalélo Valley & Addaoua Bourale mountain area).
- **Exploitation** to be allowed in the protected areas **depends on local conditions** (types of zone in the area), the zoning is now on preparation.
- **Discussions** with the Dept. of Environment **are requested** to confirm the possibility of the exploitation to be conducted.



54

JICA-TEAM: NK, Geo-E, SRED

EIA condition

- Procedure of EIA is written in Decree 2011-029/PR/MHUEAT,
- **Drilling is a target of the EIA study,**
- No Environmental Standards (currently they follow the international standards),
- No environmental consultant firm in Djibouti (there are a few individual experts) .

55

JICA-TEAM: NK, Geo-E, SRED

Proposed Site selection for A next step of JICA's assistance



JICA Survey Team

- Nippon Koei co. Ltd.,
- Geothermal Engineering Co. Ltd.
- Sumiko Resources Exploration and Development Co. Ltd. (SRED)

56

JICA-TEAM: NK, Geo-E, SRED

Site Selection for JICA Assistance

Site name	Geothermal Resources		Workability			Socio-Environment		Reference	Priority rec'ded
	Resources	CL (mg/L)	Access-ibility	Landform	Well Drilling Water	Natural conditions	In-habitant	Distance to transmission line	
Garabbayis	✓ A-1	±1,000	C Fair	B Plain -ragged hill	✓ A Ground water in Hunkle Plain	✓ A Barren	A none	45 km to Dikhil	1
Arta	✓ A-3	✓ D ±15,000	B Good	B Plain - ragged hill	C Sea	✓ A Out of a registered protection area	B a few	6 km to N.1	2
Nord Goubet	✓ A-2	✓ D ±15,000	C-D Poor-fair	C Plain - ragged hill	C Sea	✓ A Barren, Desolate	B a few	50 km to P.K. 51	2
Gaggade	✓ A-1	±5,000	✓ D Poor	✓ D Ragged hill	✓ A Ground water in Hunkle Plain	✓ A Barren	A none	40 km to P.K. 51	3
Obock *	B	5,000 - 40,000	A Excellent	A plain, costal	C Sea	B Coastal	near town	Isolated	4*
Djibouti	C	±5,000	A Excellent	A Plain	C Sea	-	-	-	5
Lac Abhe	-	±5000	C Fair	A Plain	C Lac Abhe	✓ D Registered	B a few	75 km to Dikhil	-

✓: Conditions that special considerations are given for prioritization
 Obock *: Survey of a next stage, separately from survey for a flash type may be recommended if a binary type is considered.

57

JICA-TEAM: NK, Geo-E, SRED

Overall time schedule up to Start up – 6 years at least

	1st	2nd	3rd	4th	5th	6th	7th	lifetime
1. Pre-Survey (Geological, Geochemical)		Completed						
2. Exploration (MT/TEM survey) (EIA)			Next 1 st Step					
3. Test Drilling				Next 2 nd Step				
4. Project Review and Planing								
5. Field Development								
6. Construction								
7. Start up and commissioning								
8. Operation and Maintenance								
	1st	2nd	3rd	4th	5th	6th	7th	lifetime

58

JICA-TEAM: NK, Geo-E, SRED

Proposed Approach up to Test drilling



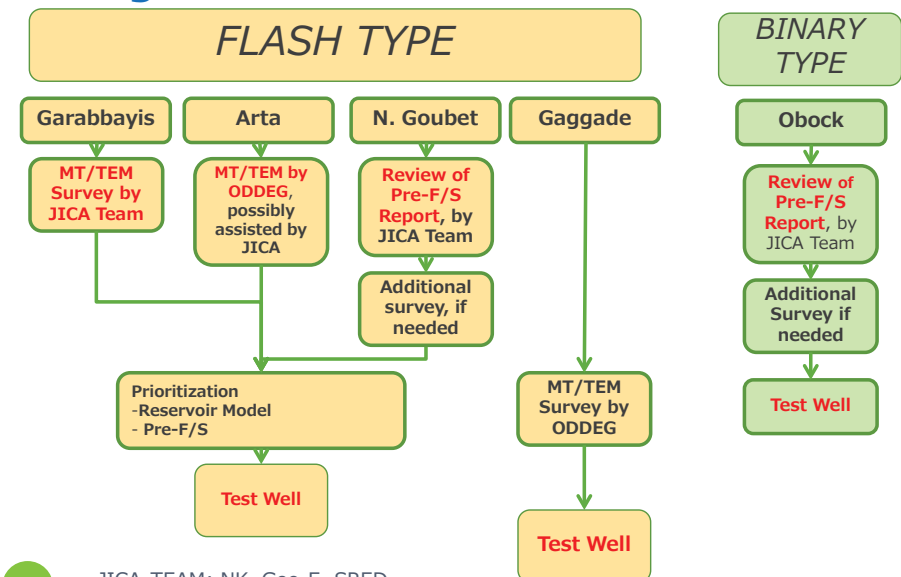
JICA Survey Team

- Nippon Koei co. Ltd.,
- Geothermal Engineering Co. Ltd.
- Sumiko Resources Exploration and Development Co. Ltd. (SRED)

59

JICA-TEAM: NK, Geo-E, SRED

Proposed approach up to test well drillings



60

JICA-TEAM: NK, Geo-E, SRED

Recommendations

1. In **Garabbays** and **Arta**, **MT/TEM survey** shall be conducted, ASAP;
2. For **N. Goubet**, the **Pre-feasibility study** shall be reviewed for comparison with Garabays and Arta, ASAP;
3. In **Gaggade**, **MT/TEM survey** may be conducted, thereafter;
4. For **Obock**, the **Pre-feasibility study** shall be reviewed for consideration of Binary development, ASAP;
5. In (a) priority site/s, **test well drillings** shall be implemented, ASAP

61

JICA-TEAM: NK, Geo-E, SRED

Way Forward: General Issues



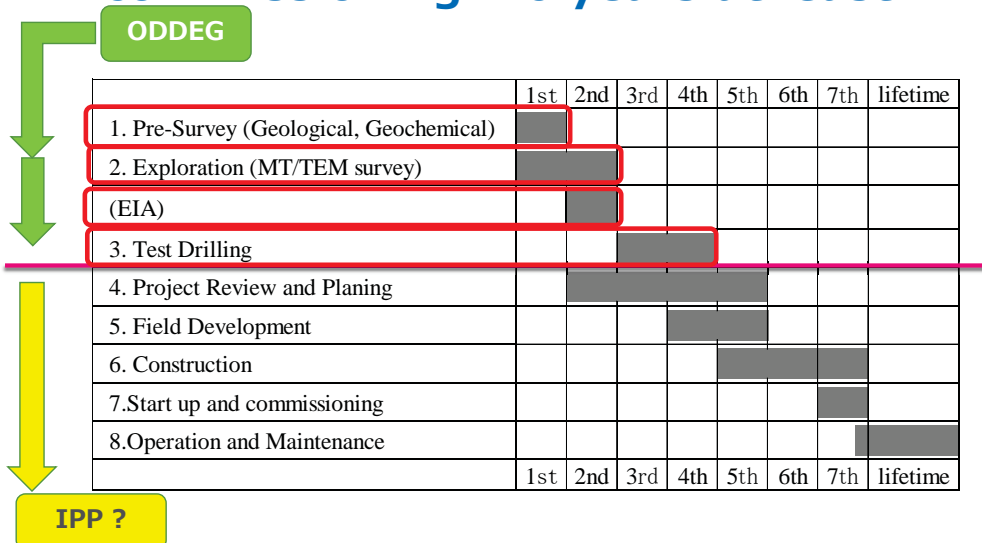
JICA Survey Team

- Nippon Koei co. Ltd.,
- Geothermal Engineering Co. Ltd.
- Sumiko Resources Exploration and Development Co. Ltd. (SRED)

62

JICA-TEAM: NK, Geo-E, SRED

Overall time schedule up to commissioning – 6 years at least



63

JICA-TEAM: NK, Geo-E, SRED

General issues for geothermal development – Capacity required

- **Exploration stage, and Test Well drilling stage**
 - **MT/TEM survey (ODDEG)**
 - Field survey, 2D analysis
 - **Gradient/slim holes and test wells**
 - Drilling supervision
 - Well geology
 - Well geochemistry
 - Well logging
 - EIA
- **Procurement of contractors (ODDEG):**
 - Drilling
 - Civil work
 - Material supply
 - Supervisory consultant
- **Reservoir modeling**
- **Reservoir potential assessment**
- **(Pre-)feasibility study**

64

JICA-TEAM: NK, Geo-E, SRED

Recommendations

1. Institutional set-up shall be addressed with;

1. Clearer goal of ODDEG,
2. Clearer work allocations among governmental organizations,

To attract subject-focused donors' attentions, **particularly for capacity building!**

65

JICA-TEAM: NK, Geo-E, SRED

Urgent Requirement of Personnel for ODDEG (Suggested)

Urgent requirement of Personnel for ODDEG (Suggested)

Position	Assigned	Desirable	Balance
1 Director General	1	1	0
(Acting Director)	0	1	1
2 Information and Documentation	0	2	2
3 Audits and Risks	0	1	1
4 Study, Research and Explorations			
Studies and Research			
Geologist	0	3	3
Geophysicist (Ph.D)	1	1	0
Geophysical Engineer	1	1	0
Physicist	1	1	0
Reservoir Engineer (Ph.D)	1	1	0
Reservoir Engineer	0	1	1
Geochemist	0	2	2
Technician	1	3	2
Drilling			
Drilling Engineer	3	3	0
Civil Engineer	0	2	2
Maintenance			
Mechanical Engineer	0	2	2
5 Administrative, Financial and Legal			
Human Resources, Accounting and Materials			
Human Resources	0	1	1
Accounting	0	1	1
Material	0	1	1
Legal	0	1	1
6 Planning, Development and EIA			
Development and EIA	1	2	1
Planning	1	2	1
Total	11	33	22

Corrected

66

JICA-TEAM: NK, Geo-E, SRED

Data base



JICA Survey Team

- Nippon Koei co. Ltd.,
- Geothermal Engineering Co. Ltd.
- Sumiko Resources Exploration and Development Co. Ltd. (SRED)

67

JICA-TEAM: NK, Geo-E, SRED

Data Information

The following information was compiled for GIS database.

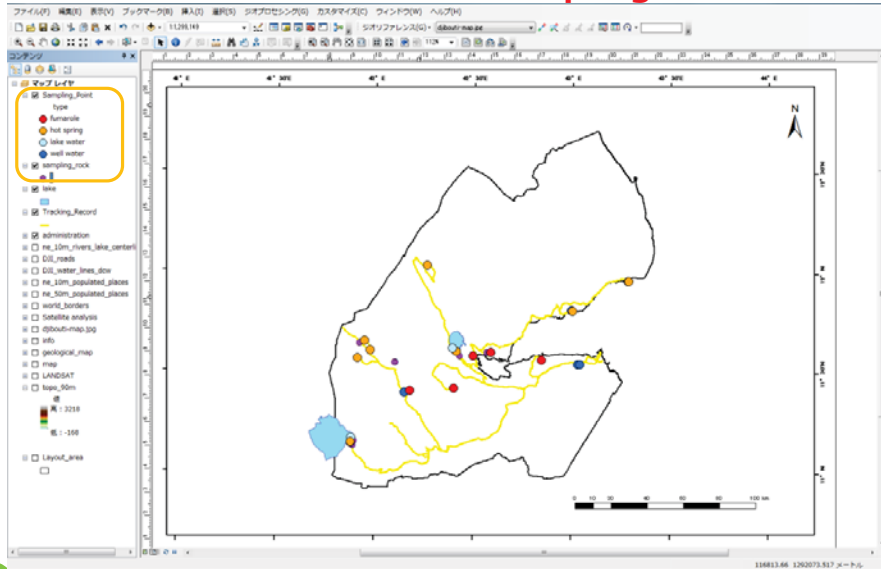
- **Site survey information**
 - Sampling points, Track record of the survey, Delineation of protection zones.
- **Information from in-door analysis and laboratory analysis**
 - Satellite Imagery analysis, Geochemical analysis and geological analysis.
- **Existing information**
 - Figures (Geological maps, Rainfall distribution map, etc) and Positional information with attribute data
- **Basic information**
 - International borders, district borders, topographic map (90 m mesh), etc.

68

JICA-TEAM: NK, Geo-E, SRED

GIS Data base

Sampling Information

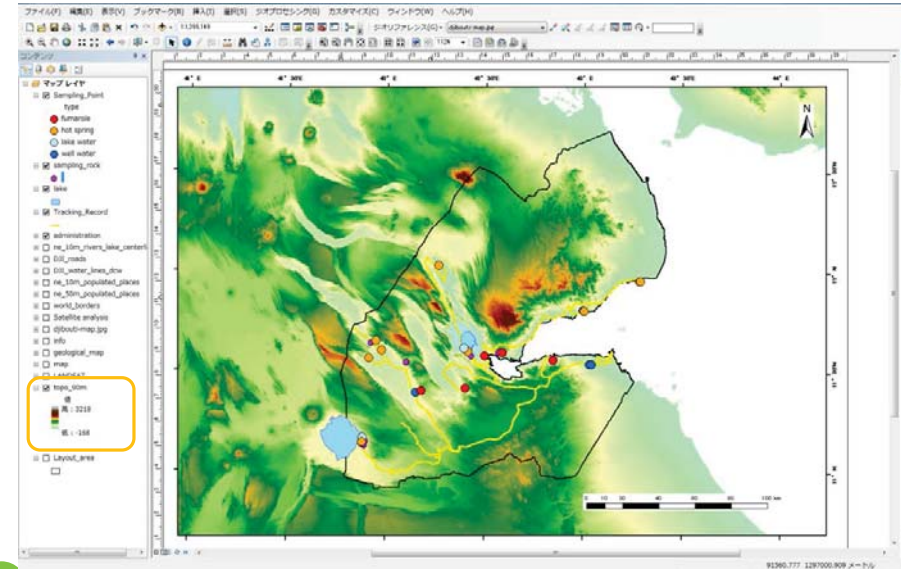


69

JICA-TEAM: NK, Geo-E, SRED

GIS Data base

Topographical Information

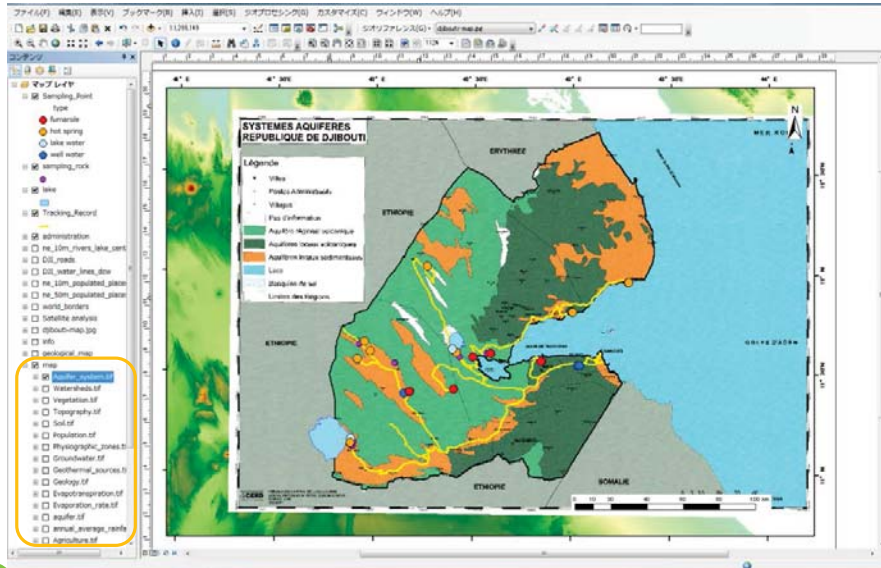


70

JICA-TEAM: NK, Geo-E, SRED

GIS Data base

Collected Information

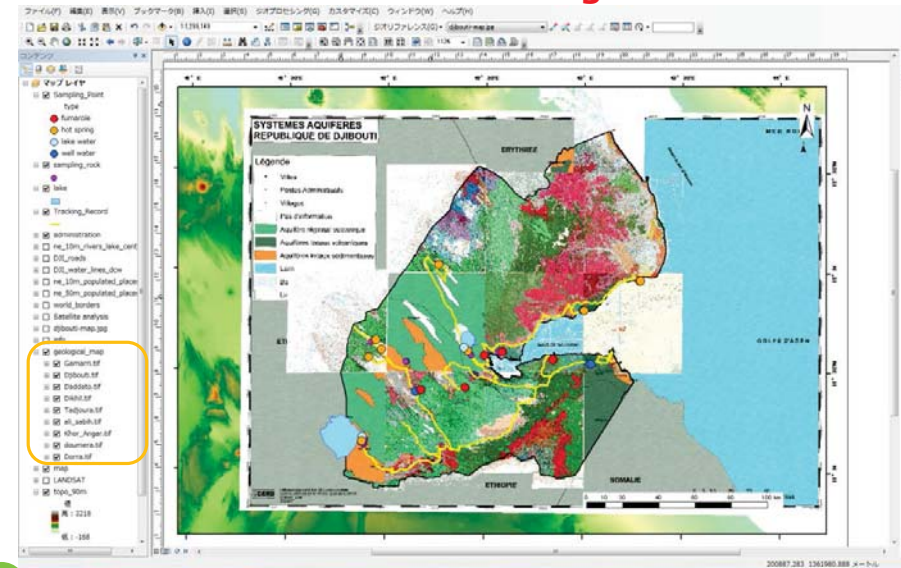


71

JICA-TEAM: NK, Geo-E, SRED

GIS Data base

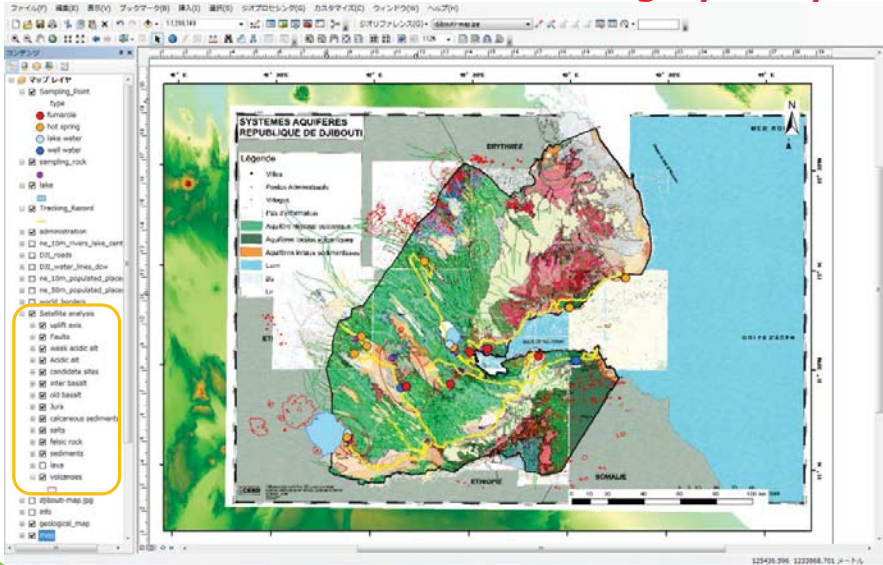
Geological Information



72

JICA-TEAM: NK, Geo-E, SRED

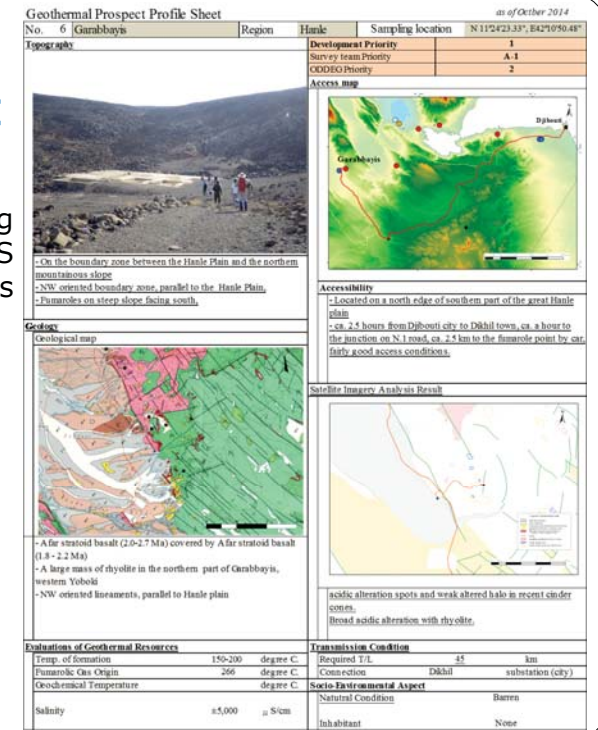
GIS Data base Satellite Imagery Analysis



JICA-TEAM: NK, Geo-E, SRED

Geothermal Profiling Sheet

- We prepared the profiling sheets based on the GIS database and the results of the priority selections.



JICA-TEAM: NK, Geo-E, SRED

Photographs



JICA Survey Team

- Nippon Koei co. Ltd.,
- Geothermal Engineering Co. Ltd.
- Sumiko Resources Exploration and Development Co. Ltd. (SRED)

JICA-TEAM: NK, Geo-E, SRED

Hanle-Garabbayis



Photo: Base concrete of an old test well

JICA-TEAM: NK, Geo-E, SRED

Arta



77

JICA-TEAM: NK, Geo-E, SRED

Nord Goubet



78

JICA-TEAM: NK, Geo-E, SRED

Hanle-Gaggade



79

JICA-TEAM: NK, Geo-E, SRED

Obock



80

JICA-TEAM: NK, Geo-E, SRED

Lac Abhe



81

JICA-TEAM: NK, Geo-E, SRED

Sakalol



82

Djibouti-Awrofoul

Merci à ODDEG et CERD



83

JICA-TEAM: NK, Geo-E, SRED

DATA COLLECTION SURVEY ON GEOTHERMAL DEVELOPMENT IN DJIBOUTI

Thank you, **Merci** and Arigatoh!

To discussion session

November, 2014
Sheraton Hotel, Djibouti



JICA Survey Team

- Nippon Koei co. Ltd.,
- **Geo**thermal **E**ngineering Co. Ltd.
- **Sumiko Resources Exploration and Development Co. Ltd. (SRED)**