

MINISTRY OF PUBLIC WORKS AND TRANSPORT(MPWT)
THE ROYAL GOVERNMENT OF THE KINGDOM OF CAMBODIA

**PREPARATORY SURVEY FOR
NATIONAL ROAD NO. 5
IMPROVEMENT PROJECT
(MIDDLE SECTION:
THLEA MA'AM – BATTAMBANG, AND SRI
SOPHORN – POIPET)
IN THE KINGDOM OF CAMBODIA**

**FINAL REPORT
(VOLUME II APPENDIX)**

OCTOBER 2014

JAPAN INTERNATIONAL COOPERATION AGENCY

KATAHIRA & ENGINEERS INTERNATIONAL

EI
JR (先)
14-178 (2)

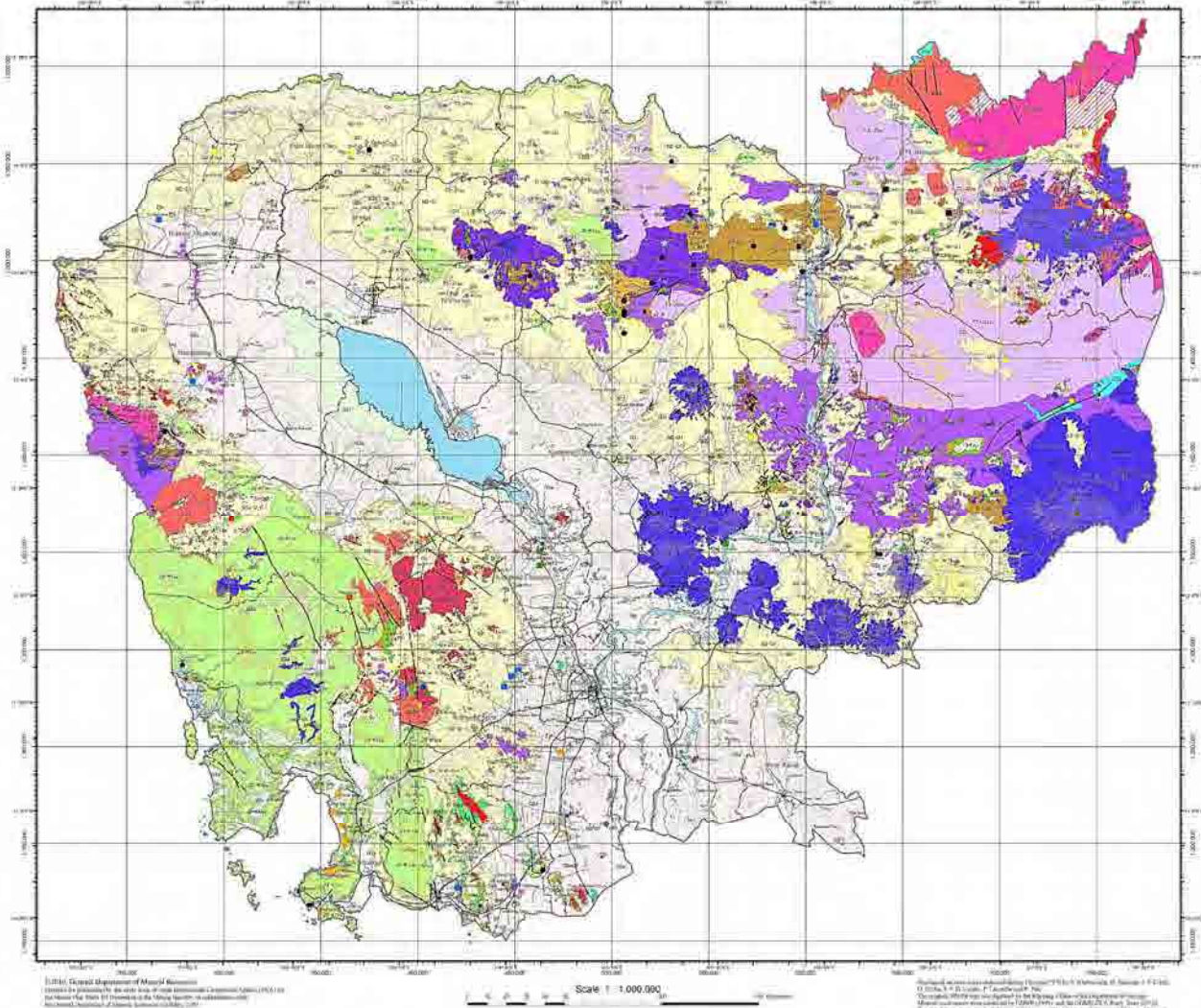
**NATIONAL ROAD NO. 5 IMPROVEMENT PROJECT
(MIDDLE SECTION: THLEA MA'AM – BATTAMBANG,
AND SRI SOPHORN – POIPET)
FINAL REPORT
Appendix Volume
TABLE OF CONTENTS**

APPENDIX	2-1	GEOLOGICAL MAP
APPENDIX	4-1	STRAIGHT LINE DIAGRAM
APPENDIX	6-1	INVENTORY SURVEY ON BOX CULVERT
APPENDIX	6-2	INVENTORY SURVEY ON BRIDGE
APPENDIX	6-3	INVENTORY SURVEY ON PIPE CULVERT
APPENDIX	6-4	INQUIRING SURVEY ON INFORMATION OF FLOODING CONDITIONS 20 th May to 29 th May 2013
APPENDIX	6-5	SKETCHES OF THE TEST PITS IN THE MIDDLE SECTION
APPENDIX	6-6	SKETCHES OF THE TEST PITS IN THE SRI SOPHORN – POIPET SECTION
APPENDIX	6-7	SUMMARY OF CBR TESTS IN THE MIDDLE SECTION
APPENDIX	6-8	SUMMARY OF CBR TESTS IN THE SRI SOPHORN – POIPET SECTION
APPENDIX	6-9	LOCATION MAP OF BOREHOLES IN THE MIDDLE SECTION
APPENDIX	6-10	BOREHOLE LOG IN THE MIDDLE SECTION
APPENDIX	6-11	SUMMARY OF LABORATORY TEST OF BOREHOLE IN THE MIDDLE SECTION
APPENDIX	6-12	CALCULATED SOIL PARAMETER IN THE MIDDLE SECTION
APPENDIX	8-1	KEY PLAN OF NATIONAL ROAD NO.5 IN THE MIDDLE SECTION
APPENDIX	8-2	KEY PLAN OF NATIONAL ROAD NO.5 IN THE SRI SOPHORN – POIPET SECTION
APPENDIX	8-3	PLAN AND PROFILE OF PURSAT BYPASS
APPENDIX	9-1	BRIDGE DESIGN
APPENDIX	15-1	LIST OF FLORA
APPENDIX	15-2	LIST OF FAUNA
APPENDIX	15-3	RESULT OF NOISE AND VIBRATION SURVEY
APPENDIX	15-4	PREDICTION METHOD AND MODEL
APPENDIX	16-1	PROJECT INFORMATION BOOKLET (ENGLISH DRAFT VERSION)
APPENDIX	16-2	TERMS OF REFERENCE FOR EXTERNAL MONITORING AGENCY
APPENDIX	16-3	TERMS OF REFERENCE FOR INCOME RESTORATION PROGRAMS
APPENDIX	16-4	INVENTORY OF LOSS AND SOCIO-ECONOMIC SURVEY QUESTIONNAIRE FORM

APPENDIX 2-1

GEOLOGICAL MAP

GEOLOGICAL MAP OF CAMBODIA

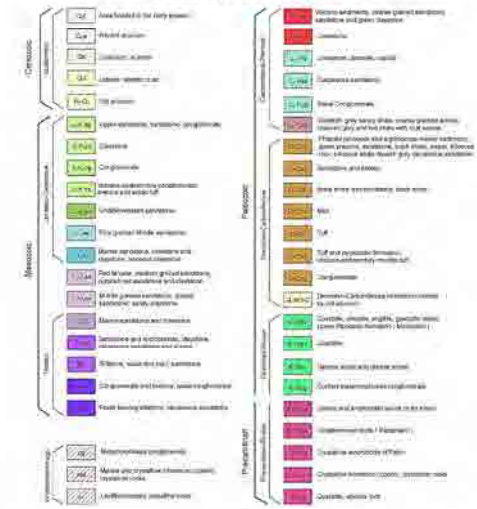


1:1000,000 Scale

Geological map of Cambodia (1:1,000,000) was prepared by the Ministry of Natural Resources and Environmental Conservation, Cambodia (MNR) in 2010. The map is based on the geological map of Cambodia (1:1,000,000) prepared by the Ministry of Natural Resources and Environmental Conservation, Cambodia (MNR) in 2010. The map is based on the geological map of Cambodia (1:1,000,000) prepared by the Ministry of Natural Resources and Environmental Conservation, Cambodia (MNR) in 2010.

LEGEND

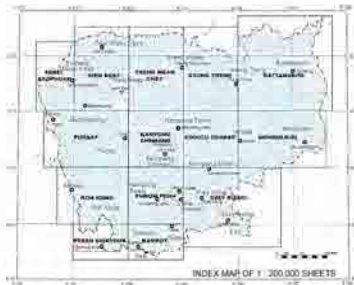
Sedimentary and metamorphic rocks



Igneous and related rocks



A2-1



Geology and mineralization of Cambodia

Geology	Mineralization
<p>Geology</p> <p>1. Cenozoic</p> <p>2. Mesozoic</p> <p>3. Palaeozoic</p> <p>4. Tertiary</p> <p>5. Quaternary</p>	<p>Mineralization</p> <p>1. Gold</p> <p>2. Silver</p> <p>3. Copper</p> <p>4. Iron</p> <p>5. Lead</p> <p>6. Zinc</p> <p>7. Manganese</p> <p>8. Nickel</p> <p>9. Cobalt</p> <p>10. Uranium</p> <p>11. Vanadium</p> <p>12. Molybdenum</p> <p>13. Tin</p> <p>14. Tungsten</p> <p>15. Bismuth</p> <p>16. Antimony</p> <p>17. Arsenic</p> <p>18. Mercury</p> <p>19. Selenium</p> <p>20. Tellurium</p> <p>21. Iodine</p> <p>22. Bromine</p> <p>23. Fluorine</p> <p>24. Chlorine</p> <p>25. Sulfur</p> <p>26. Phosphorus</p> <p>27. Potassium</p> <p>28. Sodium</p> <p>29. Magnesium</p> <p>30. Calcium</p> <p>31. Strontium</p> <p>32. Barium</p> <p>33. Radium</p> <p>34. Polonium</p> <p>35. Astatine</p> <p>36. Francium</p> <p>37. Actinium</p> <p>38. Thorium</p> <p>39. Protactinium</p> <p>40. Uranium</p> <p>41. Neptunium</p> <p>42. Plutonium</p> <p>43. Americium</p> <p>44. Curium</p> <p>45. Berkelium</p> <p>46. Californium</p> <p>47. Einsteinium</p> <p>48. Fermium</p> <p>49. Mendelevium</p> <p>50. Nobelium</p> <p>51. Lawrencium</p> <p>52. Rutherfordium</p> <p>53. Dubnium</p> <p>54. Seaborgium</p> <p>55. Bohrium</p> <p>56. Hassium</p> <p>57. Meitnerium</p> <p>58. Darmstadtium</p> <p>59. Roentgenium</p> <p>60. Copernicium</p> <p>61. Nihonium</p> <p>62. Flerovium</p> <p>63. Tennessine</p> <p>64. Oganesson</p>



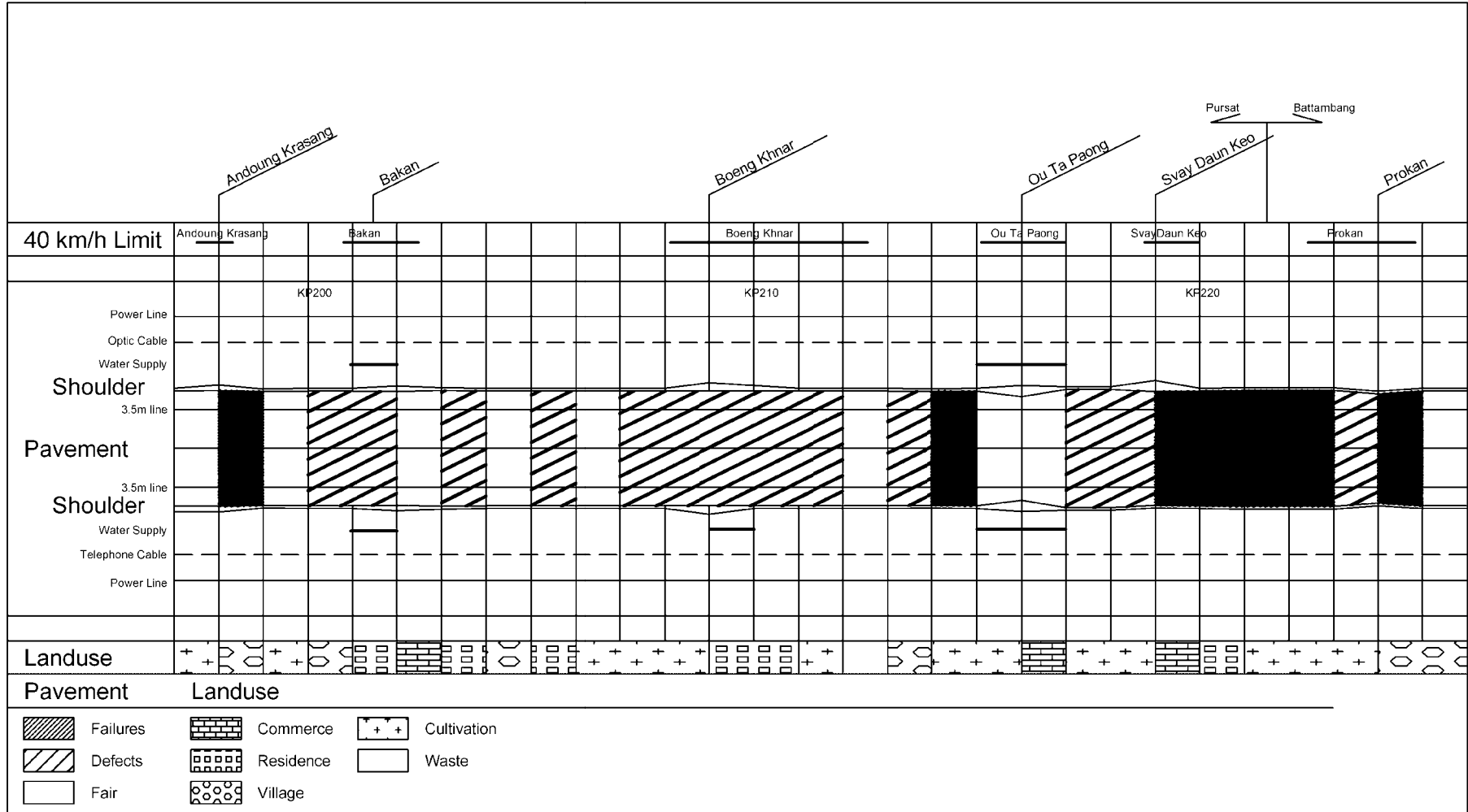
Mineral resources

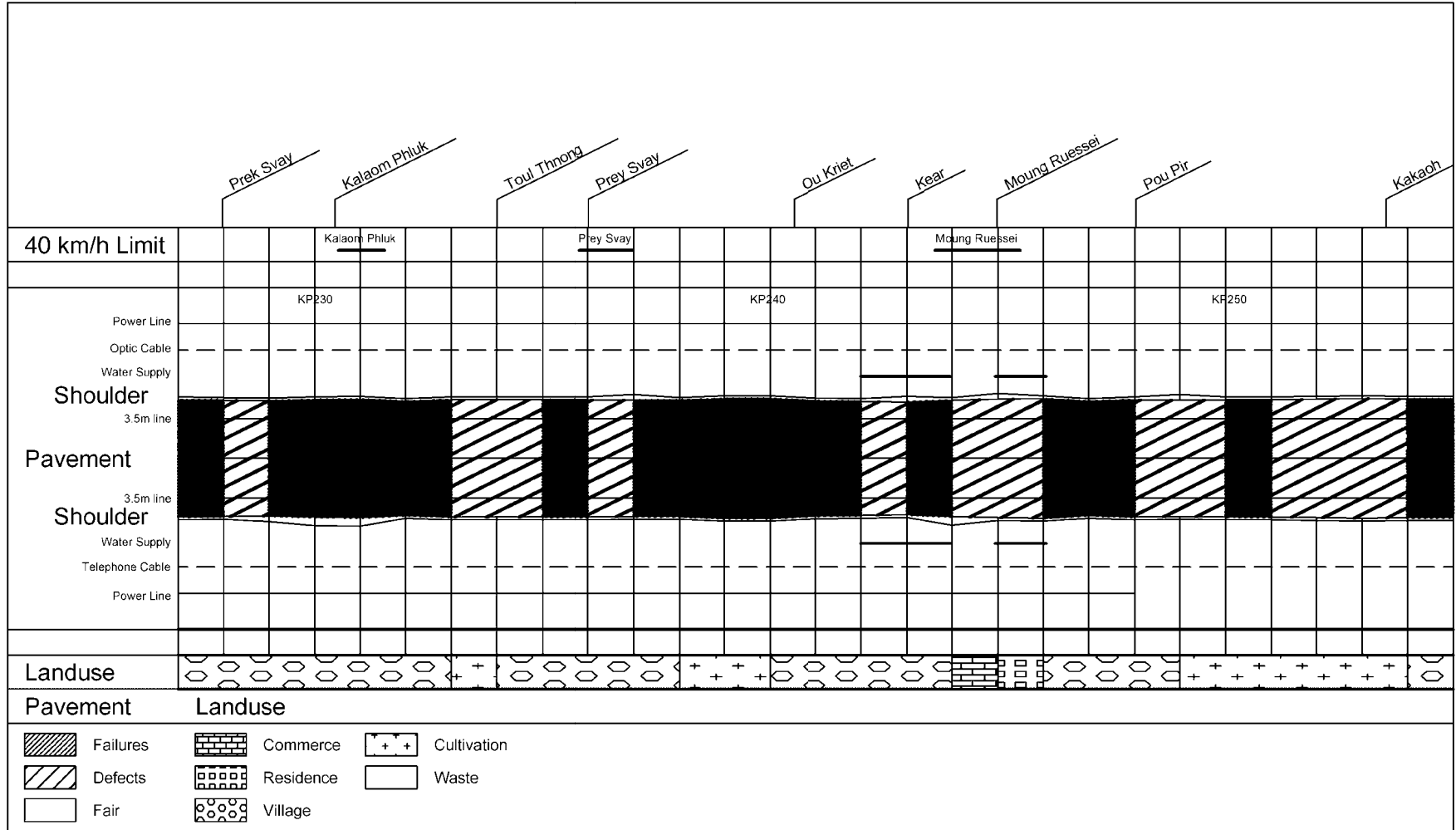


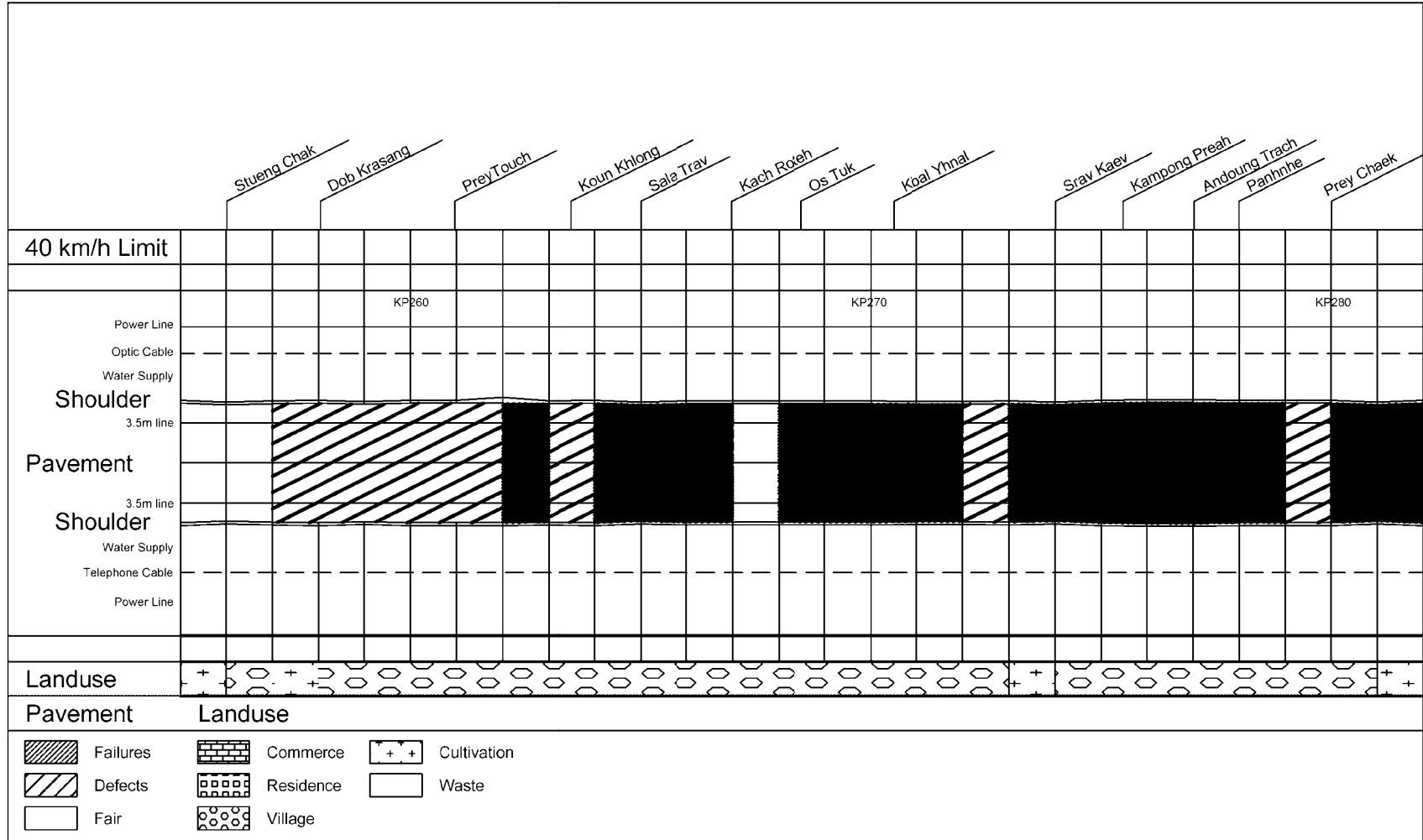
GEOLOGICAL MAP OF CAMBODIA
1 : 1,000,000

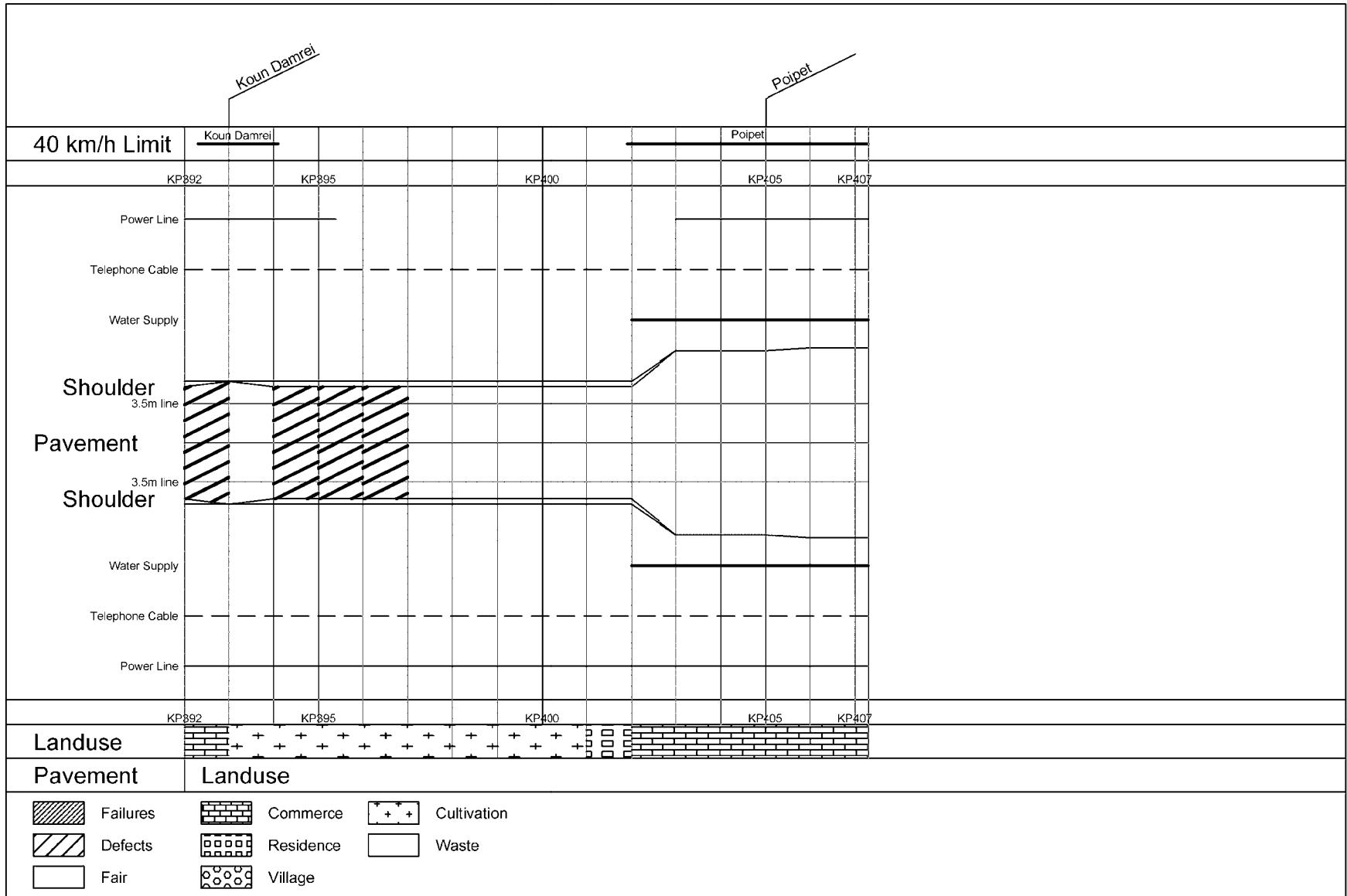
APPENDIX 4-1

STRAIGHT LINE DIAGRAM









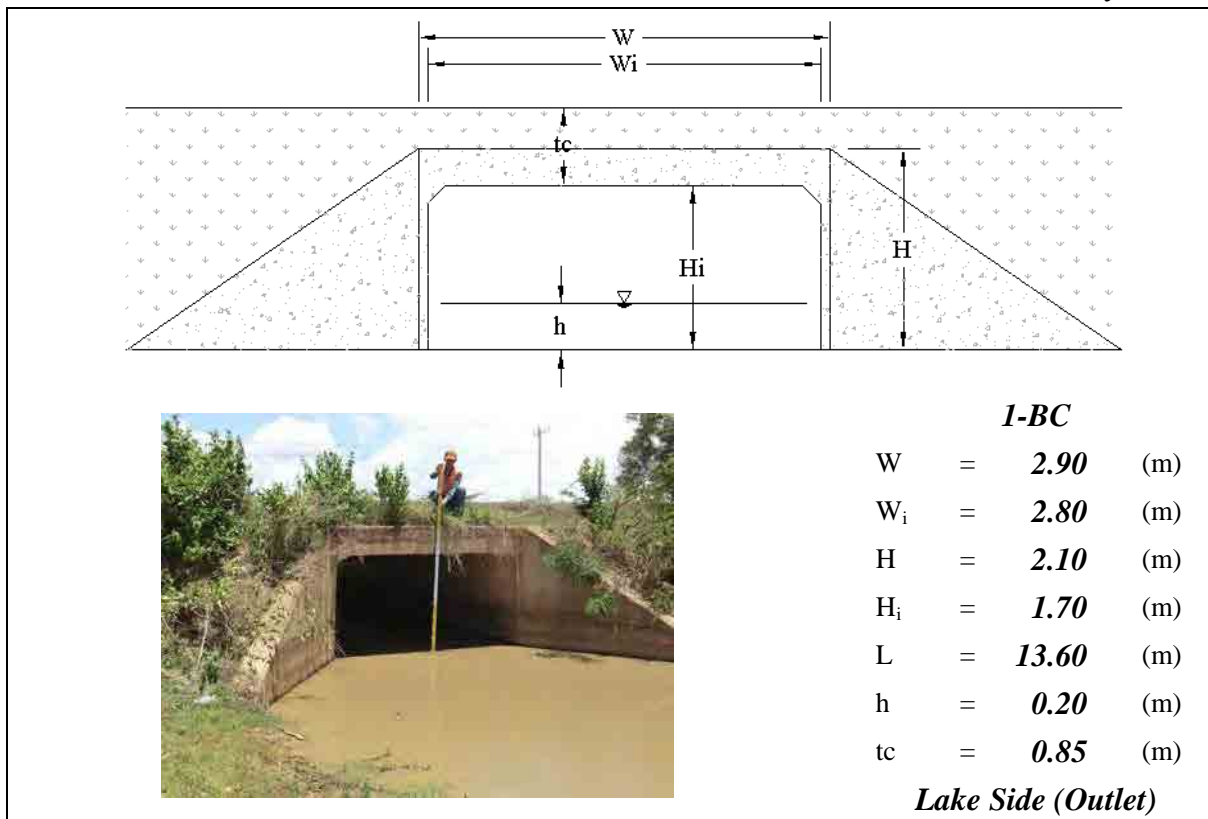
APPENDIX 6-1

INVENTORY SURVEY ON BOX CULVERT

KP: **171+800**

No.: **Bc54**

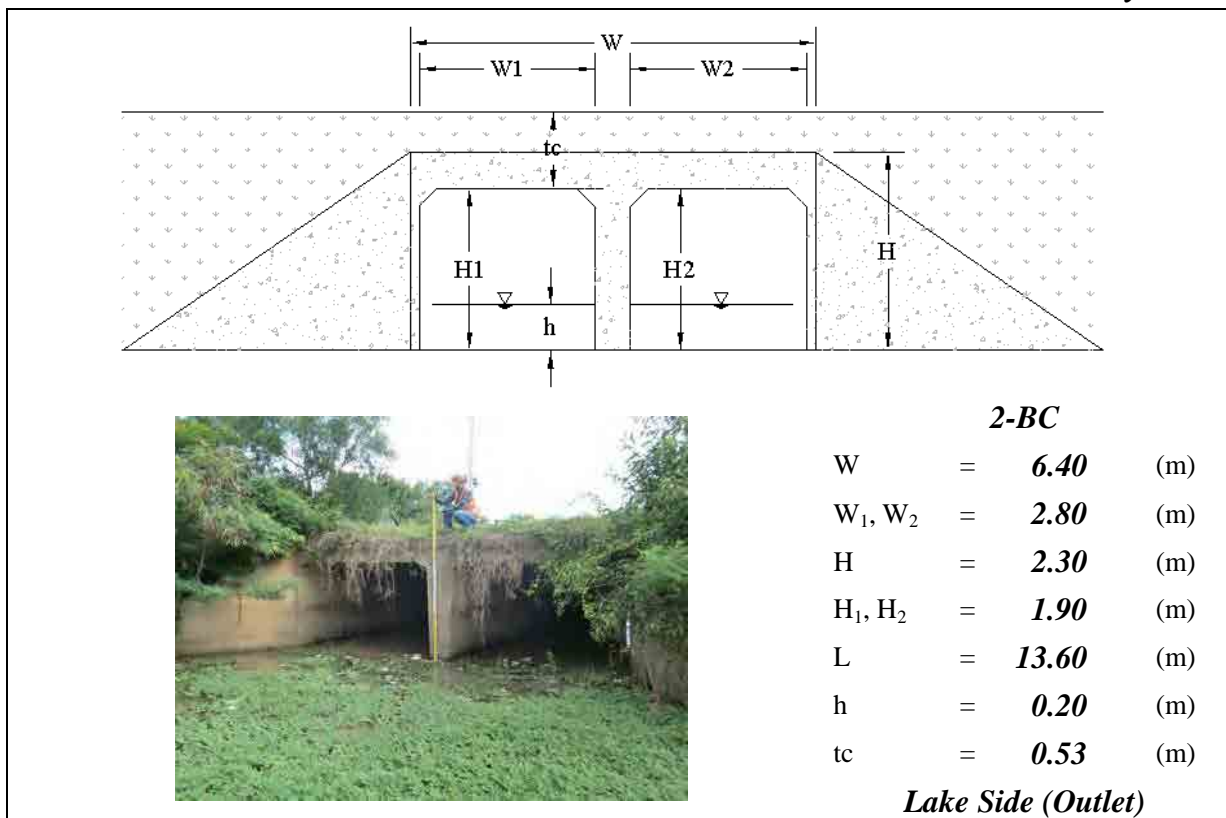
Date: **20-May-2013**



KP: **179+100**

No.: **Bc55**

Date: **20-May-2013**



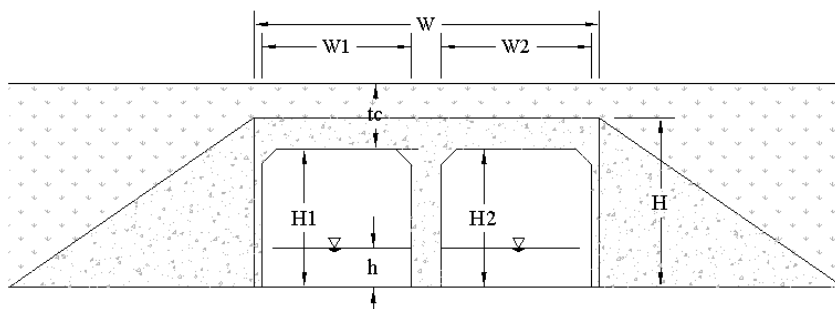
Note: BC means Box Culvert, W=Total Width, W₁/W₂/W_i =Net Width, H=Total Height, H₁/H₂/H_i =Net Height, L=Total Length, h=Water Depth, tc=Height of Soil over Top, River means Tonle Sap River

KP: 179+500

No.: Bc56

Date:

20-May-2013



2-BC

W	=	6.25	(m)
W ₁ , W ₂	=	2.85	(m)
H	=	2.25	(m)
H ₁ , H ₂	=	1.90	(m)
L	=	13.60	(m)
h	=	0.20	(m)
tc	=	0.62	(m)

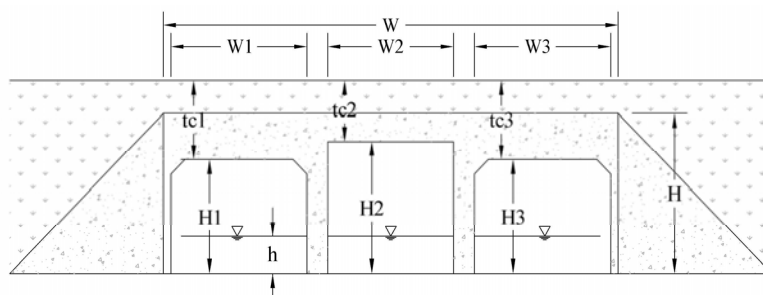
Lake Side (Outlet)

KP: 179+800

No.: Bc57

Date:

20-May-2013



3-BC

W	=	9.60	(m)
W ₁ , W ₃	=	2.85	(m)
W ₂	=	3.00	(m)
H	=	2.20	(m)
H ₁ , H ₃	=	1.65	(m)
H ₂	=	1.80	(m)
L	=	12.20	(m)
h	=	0.40	(m)
tc ₁ , tc ₃	=	0.73	(m)
tc ₂	=	0.48	(m)

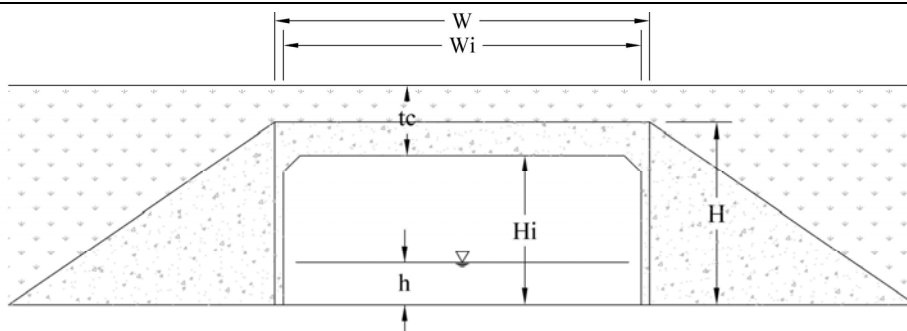
Lake Side (Outlet)

Note: BC means Box Culvert, W=Total Width, W₁/W₂/W₃=Net Width, H=Total Height, H₁/H₂/H₃ =Net Height, L=Total Length, h=Water Depth, tc₁/tc₂/tc₃=Height of Soil over Top, River means the Tonle Sap River

KP: **182+200**

No.: **Bc58**

Date: **20-May-2013**



1-BC

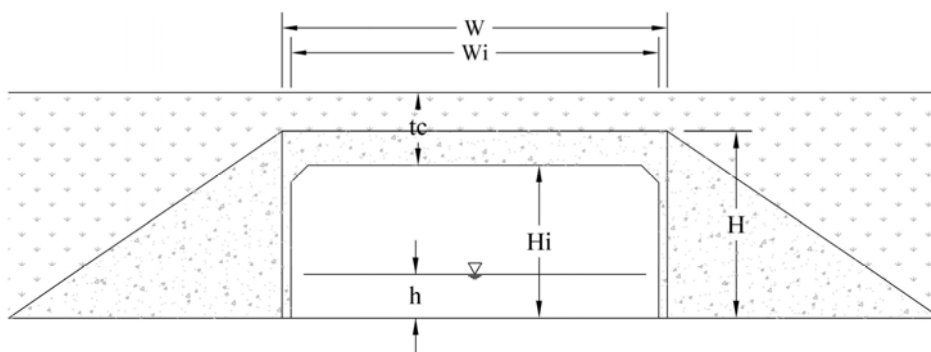
W	=	2.90	(m)
W _i	=	2.80	(m)
H	=	2.15	(m)
H _i	=	1.75	(m)
L	=	13.60	(m)
h	=	0.20	(m)
tc	=	0.65	(m)

Lake Side (Outlet)

KP: **196+500**

No.: **Bc59**

Date: **21-May-2013**



1-BC

W	=	3.10	(m)
W _i	=	3.00	(m)
H	=	2.20	(m)
H _i	=	1.60	(m)
L	=	14.00	(m)
h	=	0.10	(m)
tc	=	0.80	(m)

Lake Side (Outlet)

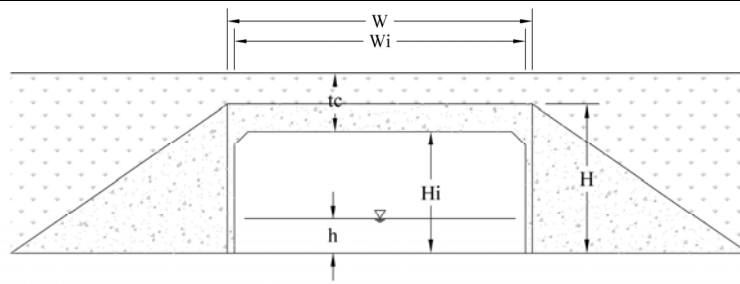
Note: BC means Box Culvert, W=Total Width, W_i=Net Width, H=Total Height, H_i= Net Height, L=Total Length, h=Water Depth, tc=Height of Soil over Top, River means the Tonle Sap River

KP: **199+300**

No.: **Bc60**

Date:

21-May-2013



1-BC

W	=	3.10	(m)
W _i	=	3.00	(m)
H	=	1.90	(m)
H _i	=	1.45	(m)
L	=	13.80	(m)
h	=	0.10	(m)
tc	=	0.75	(m)

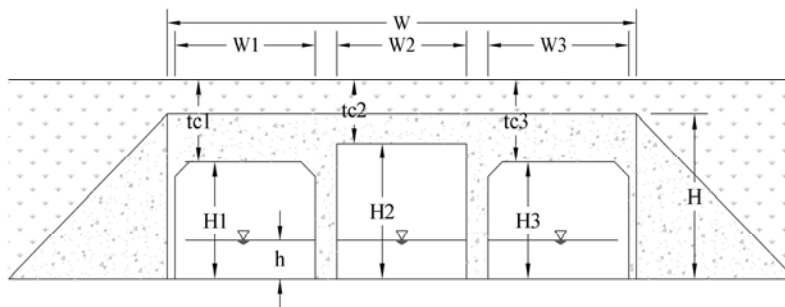
Lake Side (Outlet)

KP: **214+100**

No.: **Bc61**

Date:

22-May-2013



3-BC

W	=	9.45	(m)
W ₁ , W ₃	=	2.80	(m)
W ₂	=	2.95	(m)
H	=	2.40	(m)
H ₁ , H ₃	=	1.75	(m)
H ₂	=	2.00	(m)
L	=	13.70	(m)
h	=	0.00	(m)
tc ₁ , tc ₃	=	0.97	(m)
tc ₂	=	0.72	(m)

Lake Side (Outlet)

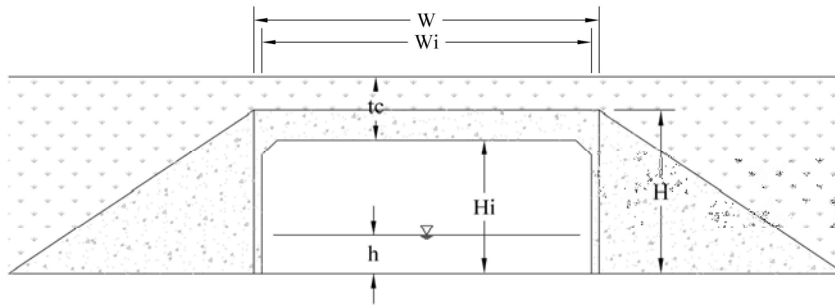
Note: BC means Box Culvert, W=Total Width, W₁/W₂/W₃=Net Width, H=Total Height, H₁/H₂/H₃=Net Height, L=Total Length, h=Water

Depth, tc₁/tc₂/tc₃=Height of Soil over Top, River means the Tonle Sap River

KP: **218+800**

No.: **Bc62**

Date: **22-May-2013**



1-BC

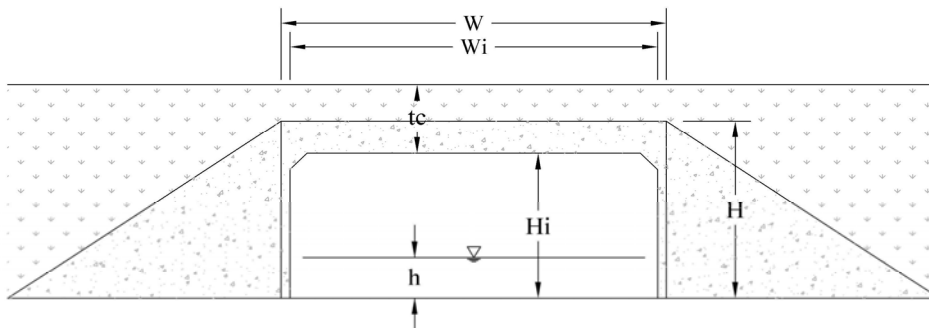
W	=	3.10	(m)
W _i	=	3.00	(m)
H	=	2.95	(m)
H _i	=	2.55	(m)
L	=	15.20	(m)
h	=	0.10	(m)
tc	=	0.75	(m)

Lake Side (Outlet)

KP: **218+900**

No.: **Bc63**

Date: **22-May-2013**



1-BC

W	=	3.10	(m)
W _i	=	3.00	(m)
H	=	2.35	(m)
H _i	=	1.95	(m)
L	=	15.30	(m)
h	=	0.10	(m)
tc	=	1.05	(m)

Lake Side (Outlet)

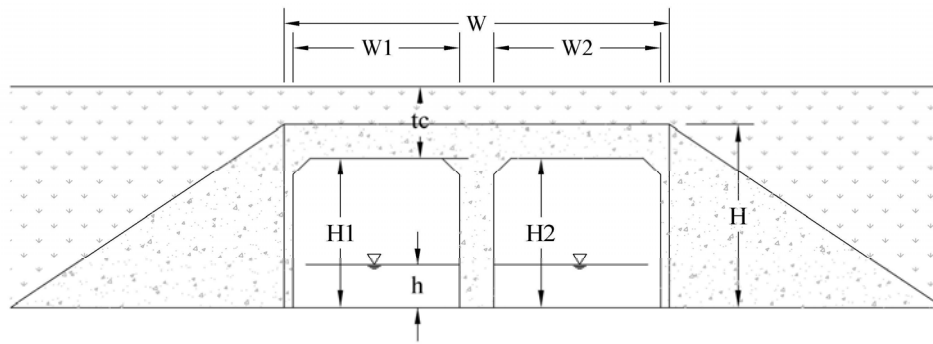
Note: BC means Box Culvert, W=Total Width, W_i=Net Width, H=Total Height, H_i=Net Height, L=Total Length, h=Water Depth, tc=Height of Soil over Top, River means the Tonle Sap River

KP: **221+400**

No.: **Bc64**

Date:

22-May-2013



	2-BC	
W	=	4.10 (m)
W ₁ , W ₂	=	1.80 (m)
H	=	2.40 (m)
H ₁ , H ₂	=	2.00 (m)
L	=	13.70 (m)
h	=	0.00 (m)
tc	=	0.80 (m)

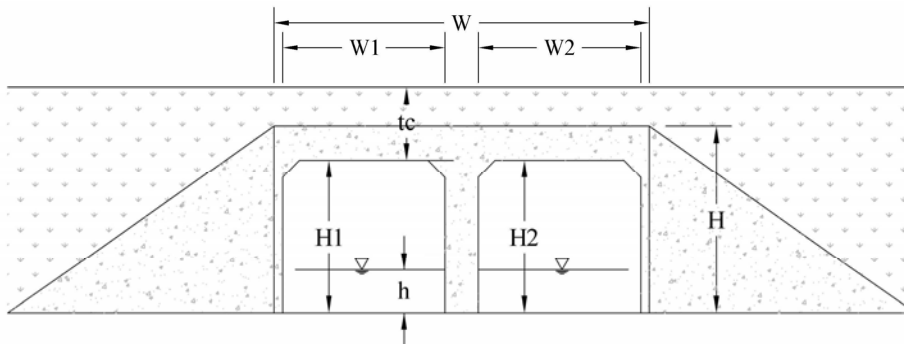
Lake Side (Outlet)

KP: **221+700**

No.: **Bc65**

Date:

22-May-2013



	2-BC	
W	=	6.30 (m)
W ₁ , W ₂	=	3.00 (m)
H	=	2.25 (m)
H ₁ , H ₂	=	1.80 (m)
L	=	16.02 (m)
h	=	0.00 (m)
tc	=	1.25 (m)

Lake Side (Outlet)

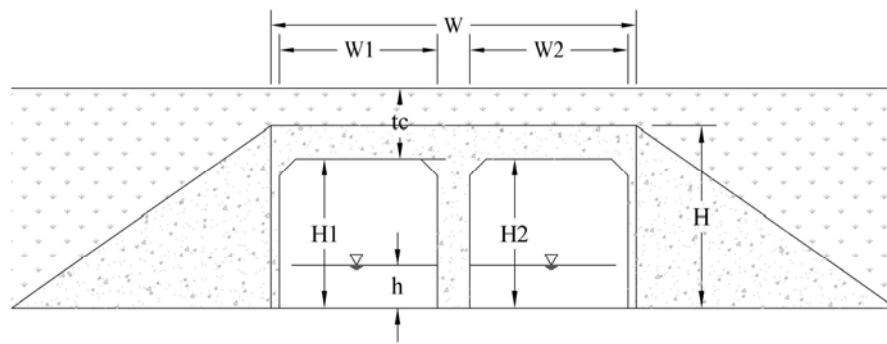
Note: BC means Box Culvert, W=Total Width, W₁/W₂=Net Width, H=Total Height, H₁/H₂=Net Height, L=Total Length, h=Water Depth,,
tc=Height of Soil over Top, River means the Tonle Sap River

KP: **230+400**

No.: **Bc66**

Date:

22-May-2013



2-BC

W	=	6.30	(m)
W ₁ , W ₂	=	3.00	(m)
H	=	2.20	(m)
H ₁ , H ₂	=	1.80	(m)
L	=	13.70	(m)
h	=	0.00	(m)
tc	=	0.65	(m)

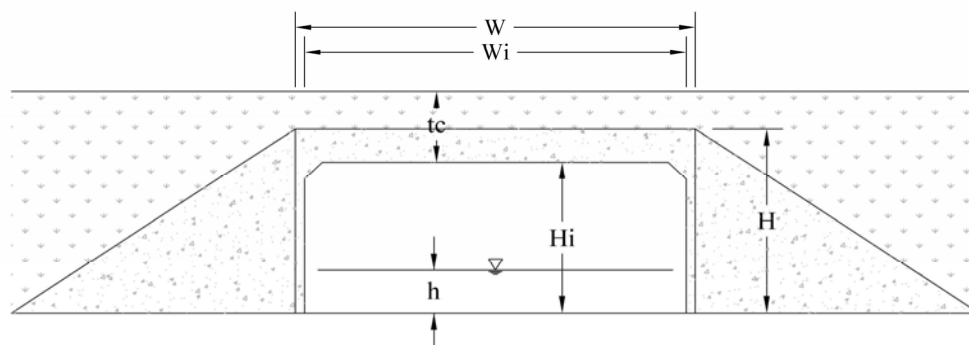
Lake Side (Outlet)

KP: **232+800**

No.: **Bc67**

Date:

23-May-2013



1-BC

W	=	3.20	(m)
W _i	=	3.10	(m)
H	=	1.85	(m)
H _i	=	1.45	(m)
L	=	13.70	(m)
h	=	0.00	(m)
tc	=	0.75	(m)

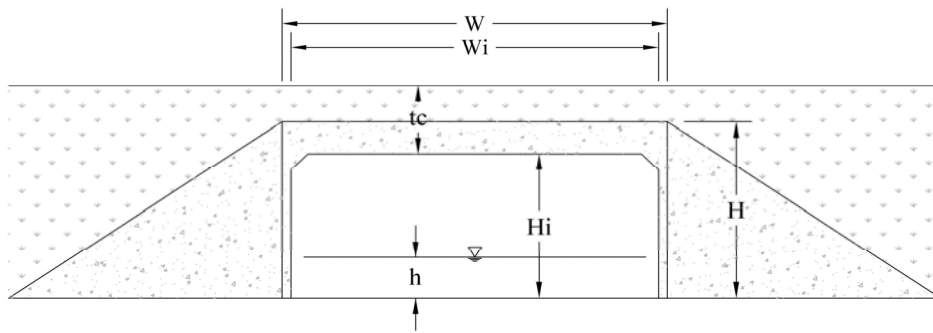
Lake Side (Outlet)

Note: BC means Box Culvert, W=Total Width, W₁/W₂/W_i =Net Width, H=Total Height, H₁/H₂/H_i =Net Height, L=Total Length, h=Water Depth, tc=Height of Soil over Top,

KP: **237+400**

No.: **Bc68**

Date: **23-May-2013**



1-BC

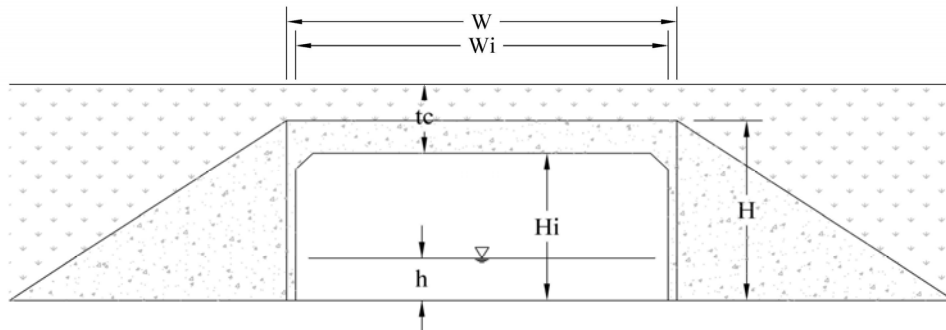
W	=	3.10	(m)
W_i	=	3.00	(m)
H	=	1.95	(m)
H_i	=	1.55	(m)
L	=	13.70	(m)
h	=	0.00	(m)
t_c	=	0.80	(m)

Lake Side (Outlet)

KP: **238+200**

No.: **Bc69**

Date: **23-May-2013**



1-BC

W	=	3.10	(m)
W_i	=	3.00	(m)
H	=	2.30	(m)
H_i	=	1.90	(m)
L	=	13.70	(m)
h	=	0.10	(m)
t_c	=	0.62	(m)

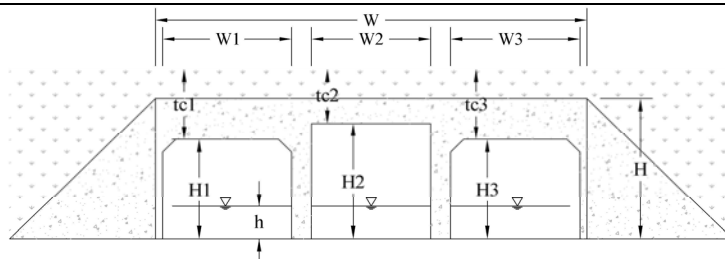
Lake Side (Outlet)

Note: BC means Box Culvert, W =Total Width, W_i =Net Width, H =Total Height, H_i =Net Height, L =Total Length, h =Water Depth, t_c =Height of Soil over Top.

KP: **240+000**

No.: **Bc70**

Date: **23-May-2013**



3-BC

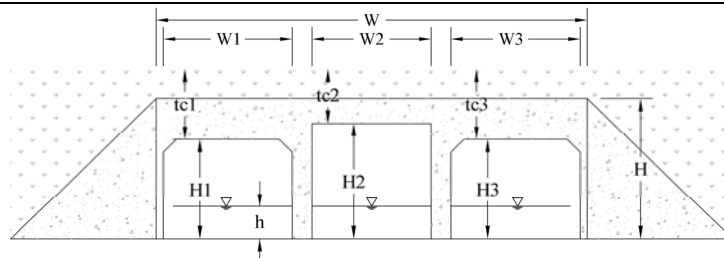
W	=	6.65	(m)
W ₁ , W ₃	=	2.80	(m)
W ₂	=	3.00	(m)
H	=	2.50	(m)
H ₁ , H ₃	=	1.85	(m)
H ₂	=	2.10	(m)
L	=	13.70	(m)
h	=	0.00	(m)
tc ₁ , tc ₃	=	0.75	(m)
tc ₂	=	0.50	(m)

Lake Side (Outlet)

KP: **245+400**

No.: **Bc71**

Date: **23-May-2013**



3-BC

W	=	7.50	(m)
W ₁ , W ₃	=	2.80	(m)
W ₂	=	3.00	(m)
H	=	2.45	(m)
H ₁ , H ₃	=	1.80	(m)
H ₂	=	2.05	(m)
L	=	13.80	(m)
h	=	1.40	(m)
tc ₁ , tc ₃	=	1.30	(m)
tc ₂	=	1.05	(m)

Lake Side (Outlet)

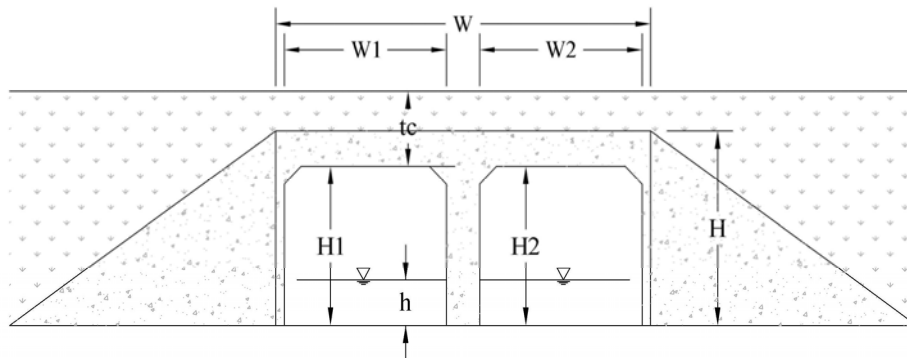
Note: BC means Box Culvert, W=Total Width, W₁/W₂/W₃=Net Width, H=Total Height, H₁/H₂/H₃=Net Height, L=Total Length, h=Water Depth, tc₁/tc₂/tc₃=Height of Soil over Top, River means the Tonle Sap River

KP: **248+500**

No.: **Bc72**

Date:

23-May-2013



2-BC

W	=	6.35	(m)
W ₁ , W ₂	=	2.85	(m)
H	=	2.45	(m)
H ₁ , H ₂	=	2.00	(m)
L	=	13.70	(m)
h	=	0.00	(m)
tc	=	0.45	(m)

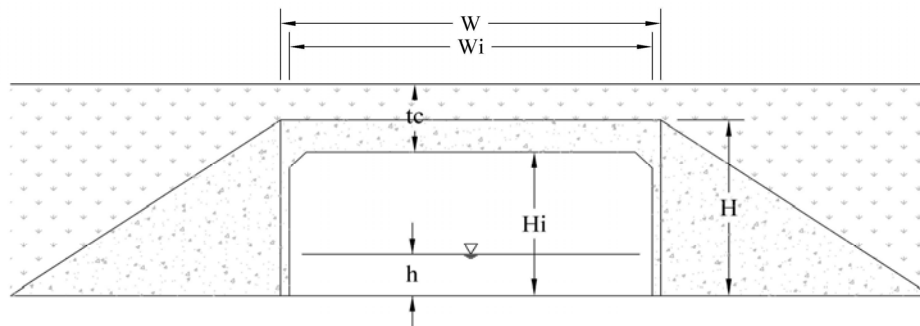
Lake Side (Outlet)

KP: **249+000**

No.: **Bc73**

Date:

23-May-2013



1-BC

W	=	3.10	(m)
W _i	=	3.00	(m)
H	=	2.45	(m)
H _i	=	2.05	(m)
L	=	13.80	(m)
h	=	0.00	(m)
tc	=	0.65	(m)

Lake Side (Outlet)

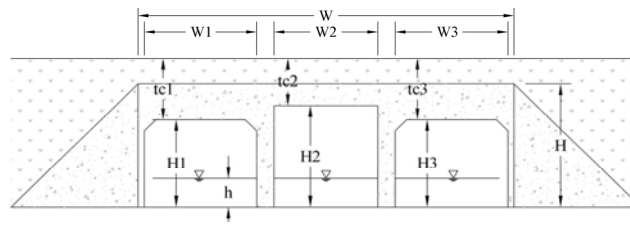
Note: BC means Box Culvert, W=Total Width, W₁/W₂/W_i =Net Width, H=Total Height, H₁/H₂/H_i =Net Height, L=Total Length, h=Water

Depth, tc=Height of Soil over Top, River means the Tonle Sap River

KP: **251+000**

No.: **Bc74**

Date: **23-May-2013**



3-BC

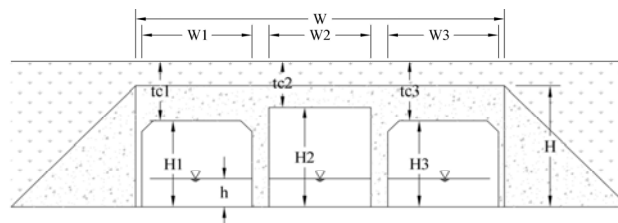
W	=	9.70	(m)
W ₁ , W ₃	=	2.85	(m)
W ₂	=	3.00	(m)
H	=	2.60	(m)
H ₁ , H ₃	=	2.00	(m)
H ₂	=	2.20	(m)
L	=	13.70	(m)
h	=	0.00	(m)
tc ₁ , tc ₃	=	0.72	(m)
tc ₂	=	0.52	(m)

Lake Side (Outlet)

KP: **252+400**

No.: **Bc75**

Date: **23-May-2013**



3-BC

W	=	9.50	(m)
W ₁ , W ₃	=	2.85	(m)
W ₂	=	3.00	(m)
H	=	1.35	(m)
H ₁ , H ₃	=	0.75	(m)
H ₂	=	1.00	(m)
L	=	13.70	(m)
h	=	0.30	(m)
tc ₁ , tc ₃	=	1.20	(m)
tc ₂	=	0.95	(m)

Lake Side (Outlet)

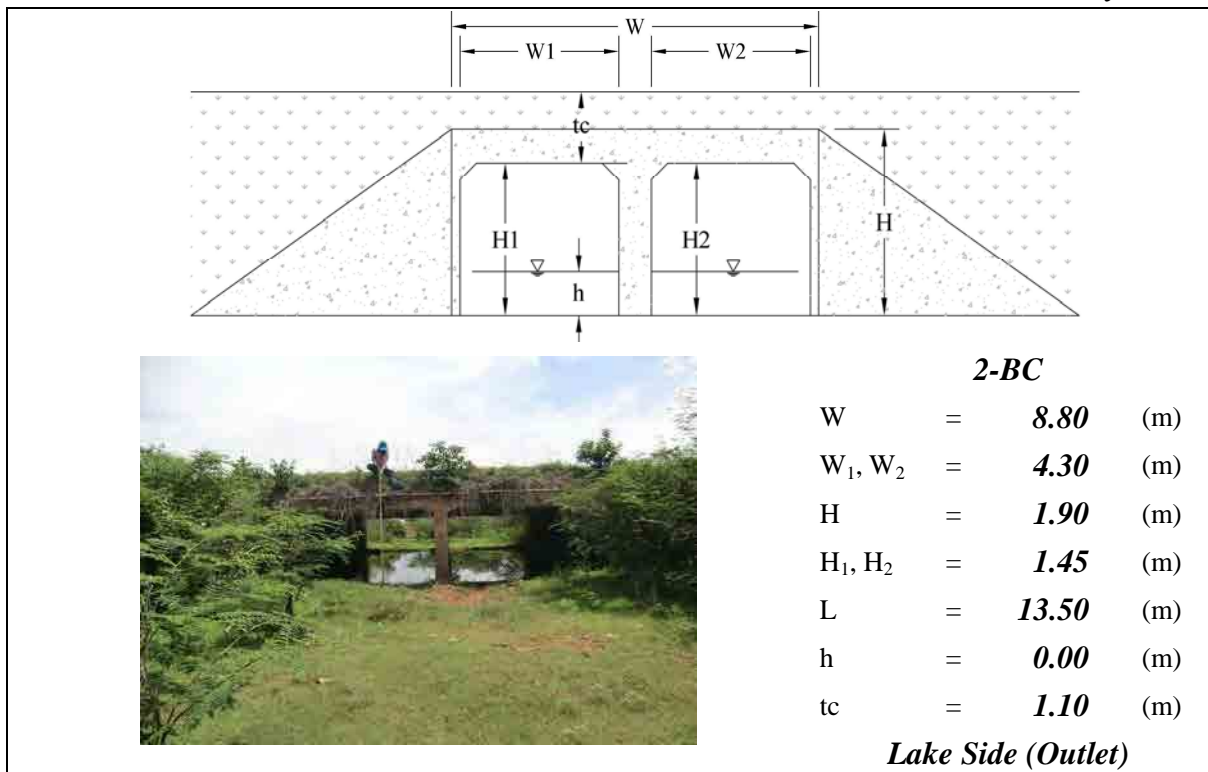
Note: BC means Box Culvert, W=Total Width, W₁/W₂/W₃=Net Width, H=Total Height, H₁/H₂/H₃=Net Height, L=Total Length, h=Water Depth, tc₁/tc₂/tc₃=Height of Soil over Top, River means the Tonle Sap River

KP: 254+700

NO.: Bc76

Date:

23-May-2013

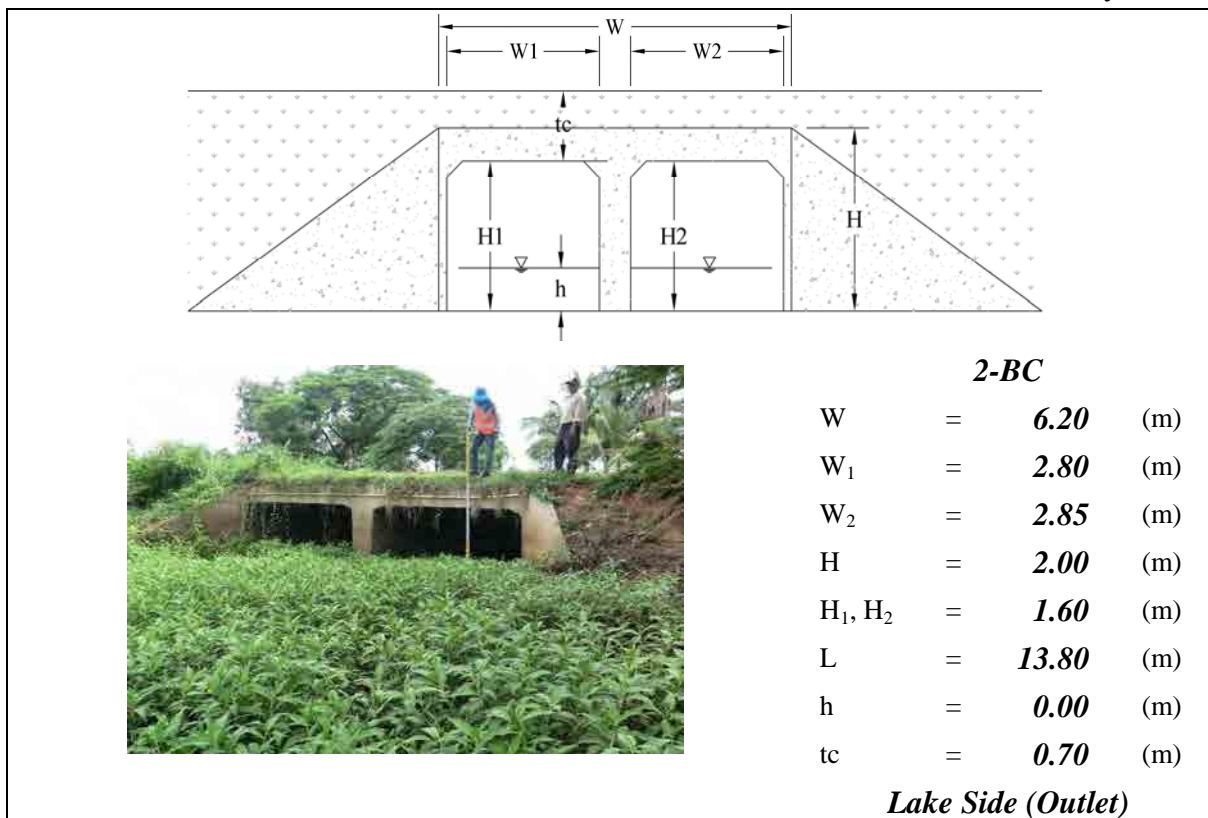


KP: 255+900

No.: Bc77

Date:

23-May-2013



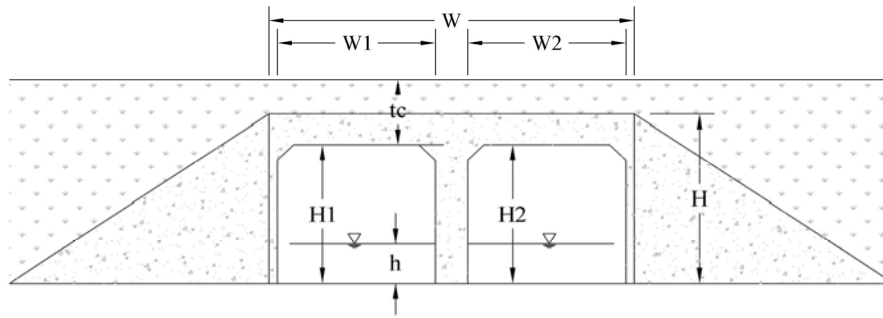
Note: BC means Box Culvert, W=Total Width, W₁/W₂=Net Width, H=Total Height, H₁/H₂=Net Height, L=Total Length, h=Water Depth, tc=Height of Soil over Top,

KP: **259+100**

No.: **Bc78**

Date:

23-May-2013



2-BC

W	=	6.20	(m)
W ₁	=	2.75	(m)
W ₂	=	2.85	(m)
H	=	2.30	(m)
H ₁ , H ₂	=	1.90	(m)
L	=	13.70	(m)
h	=	0.00	(m)
tc	=	0.75	(m)

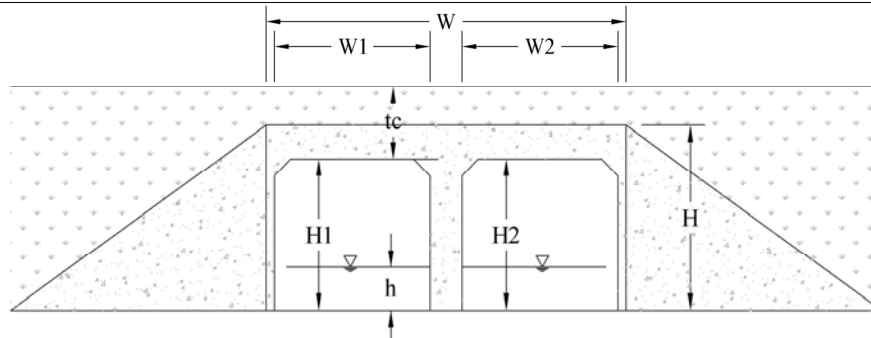
Lake Side (Outlet)

KP: **261+400**

No.: **Bc79**

Date:

23-May-2013



2-BC

W	=	8.60	(m)
W ₁ , W ₂	=	4.15	(m)
H	=	2.35	(m)
H ₁ , H ₂	=	1.90	(m)
L	=	13.70	(m)
h	=	0.00	(m)
tc	=	1.05	(m)

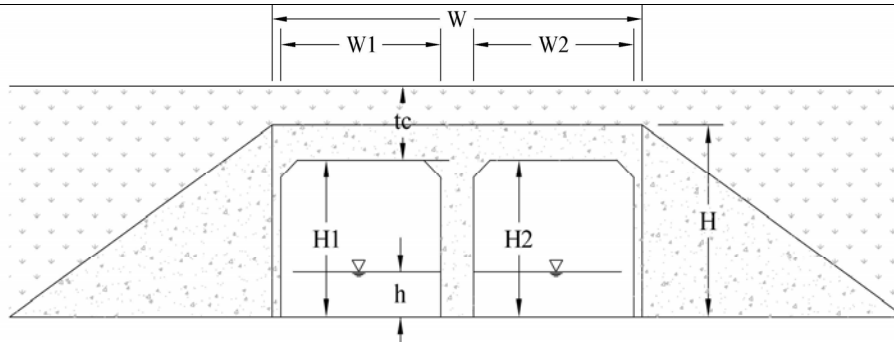
Lake Side (Outlet)

Note: BC means Box Culvert, W=Total Width, W₁/W₂=Net Width, H=Total Height, H₁/H₂=Net Height, L=Total Length, h=Water Depth,
tc=Height of Soil over Top.

KP: **262+300**

No.: **Bc80**

Date: **24-May-2013**



2-BC

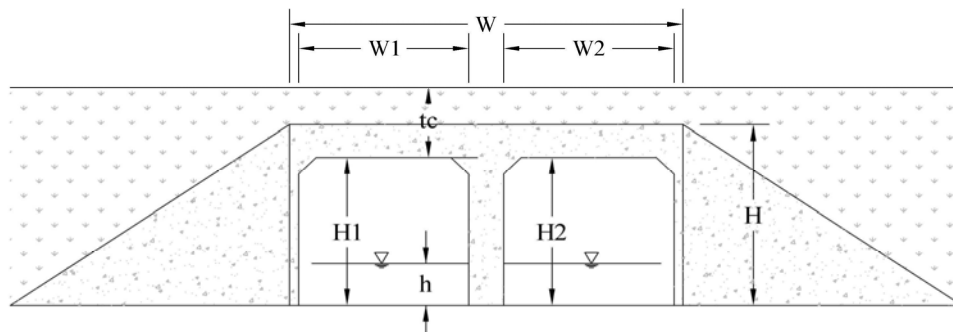
W	=	6.30	(m)
W_1, W_2	=	2.85	(m)
H	=	2.40	(m)
H_1, H_2	=	2.00	(m)
L	=	13.70	(m)
h	=	0.00	(m)
tc	=	0.45	(m)

Lake Side (Outlet)

KP: **264+100**

No.: **Bc81**

Date: **24-May-2013**



2-BC

W	=	6.20	(m)
W_1, W_2	=	2.85	(m)
H	=	2.20	(m)
H_1, H_2	=	1.80	(m)
L	=	13.70	(m)
h	=	0.00	(m)
tc	=	0.55	(m)

Lake Side (Outlet)

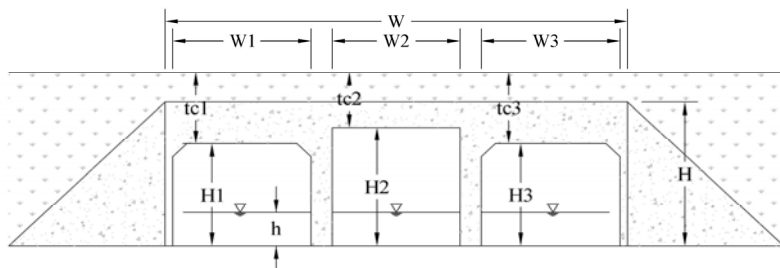
Note: BC means Box Culvert, W =Total Width, W_1/W_2 =Net Width, H =Total Height, H_1/H_2 =Net Height, L =Total Length, h =Water Depth,

tc =Height of Soil over Top,

KP: 267+000

No.: Bc82

Date: 24-May-2013



3-BC

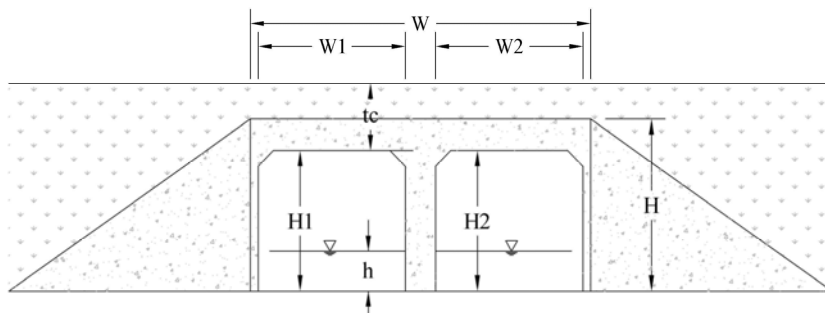
W	=	9.60	(m)
W ₁ , W ₃	=	2.85	(m)
W ₂	=	3.00	(m)
H	=	2.60	(m)
H ₁ , H ₃	=	1.95	(m)
H ₂	=	2.20	(m)
L	=	13.70	(m)
h	=	0.00	(m)
tc ₁ , tc ₃	=	0.75	(m)
tc ₂	=	0.50	(m)

Lake Side (Outlet)

KP: 269+700

No.: Bc83

Date: 24-May-2013



2-BC

W	=	6.30	(m)
W ₁ , W ₂	=	3.00	(m)
H	=	2.40	(m)
H ₁ , H ₂	=	2.00	(m)
L	=	13.00	(m)
h	=	0.00	(m)
tc	=	0.55	(m)

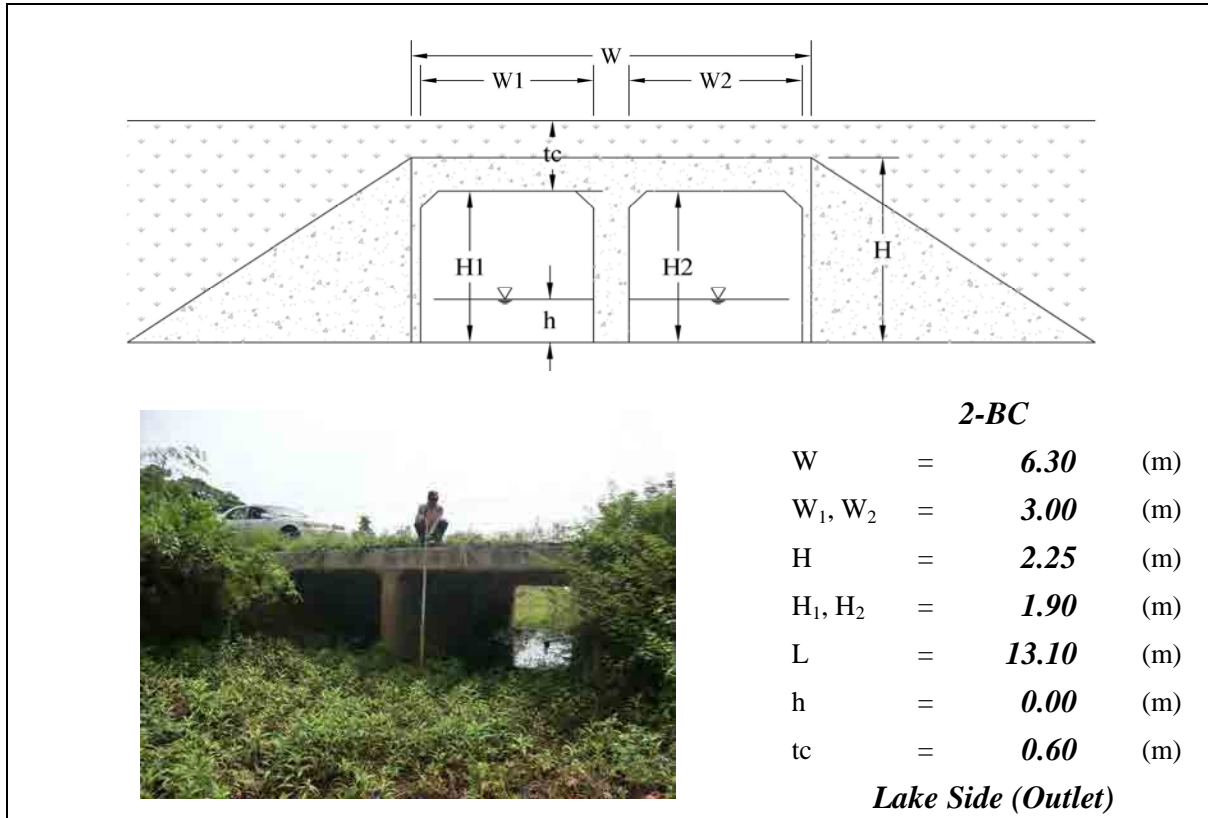
Lake Side (Outlet)

Note: BC means Box Culvert, W=Total Width, W₁/W₂/W₃=Net Width, H=Total Height, H₁/H₂/H₃=Net Height, L=Total Length, h=Water Depth, tc₁/tc₂/tc₃=Height of Soil over Top, River means the Tonle Sap River

KP: 270+400

No.: Bc84

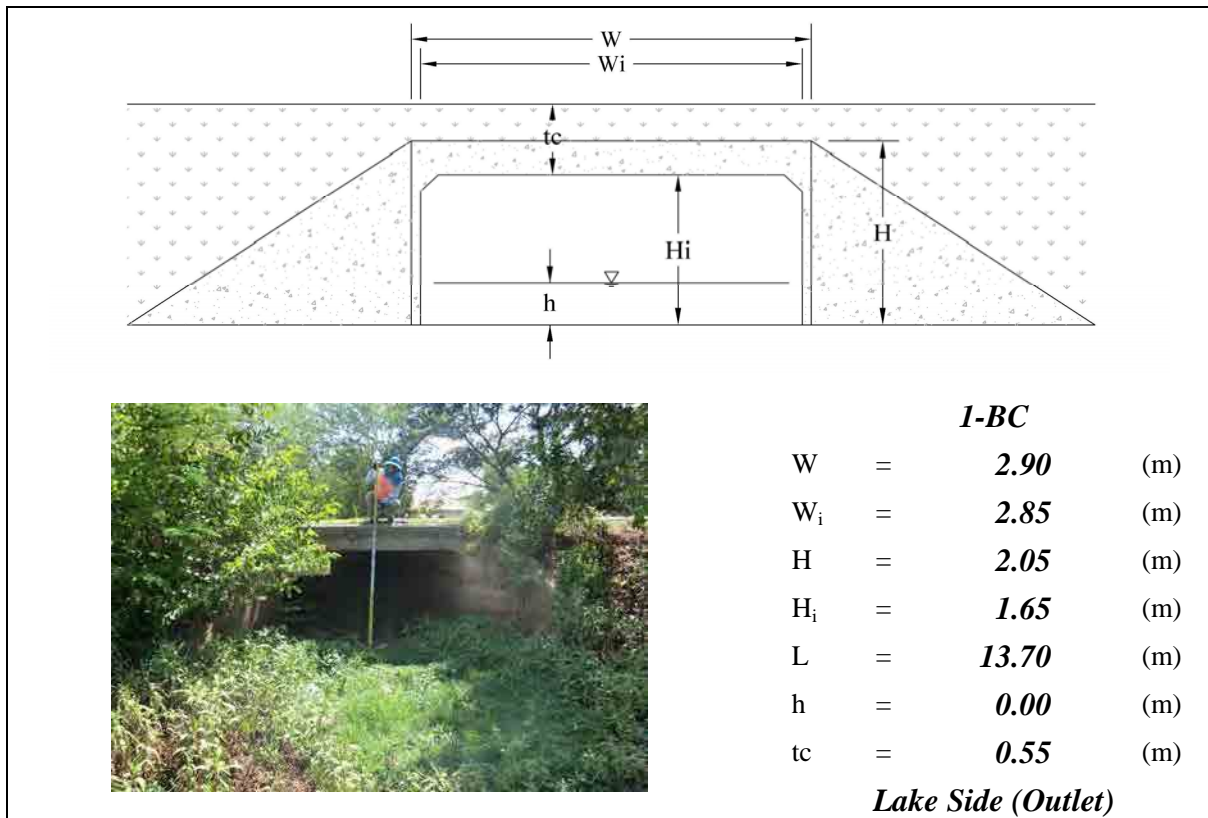
Date: 24-May-2013



KP: 274+200

No.: Bc85

Date: 26-May-2013

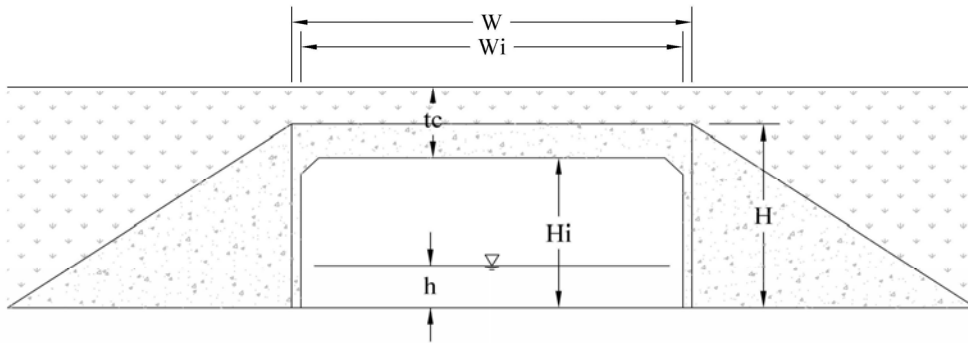


Note: BC means Box Culvert, W=Total Width, $W_1/W_2/W_i$ =Net Width, H=Total Height, $H_1/H_2/H_i$ =Net Height, L=Total Length, h=Water Depth, tc=Height of Soil over Top,

KP: **276+100**

No.: **Bc86**

Date: **26-May-2013**



1-BC

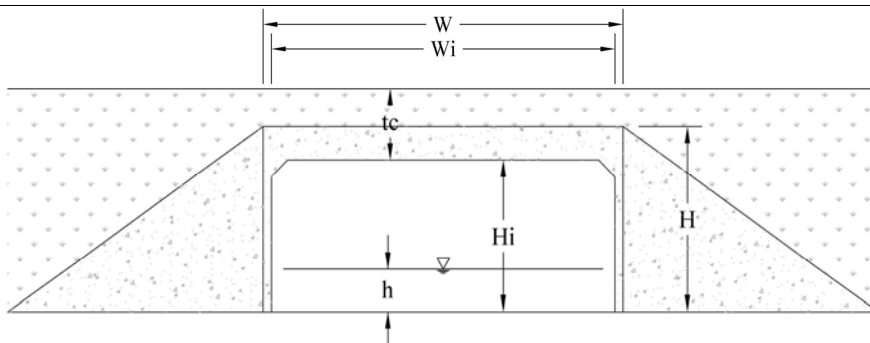
W	=	2.90	(m)
W _i	=	2.85	(m)
H	=	2.35	(m)
H _i	=	1.95	(m)
L	=	13.70	(m)
h	=	0.00	(m)
tc	=	0.55	(m)

Lake Side (Outlet)

KP: **280+700**

No.: **Bc87**

Date: **26-May-2013**



1-BC

W	=	3.10	(m)
W _i	=	3.00	(m)
H	=	2.20	(m)
H _i	=	1.80	(m)
L	=	13.70	(m)
h	=	0.00	(m)
tc	=	0.65	(m)

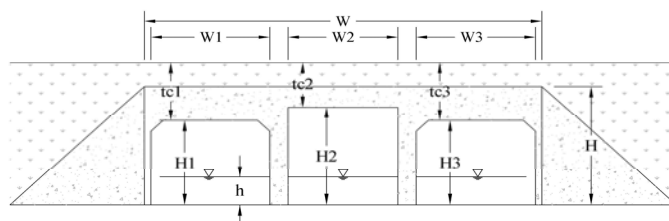
Lake Side (Outlet)

Note: BC means Box Culvert, W=Total Width, W_i=Net Width, H=Total Height, H_i=Net Height, L=Total Length, h=Water Depth, tc=Height of Soil over Top, River means the Tonle Sap River

KP: **281+700**

No.: **Bc88**

Date: **26-May-2013**



3-BC

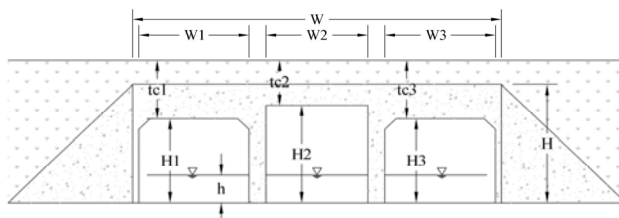
W	=	9.50	(m)
W ₁ , W ₃	=	2.85	(m)
W ₂	=	3.00	(m)
H	=	2.60	(m)
H ₁ , H ₃	=	1.95	(m)
H ₂	=	2.20	(m)
L	=	13.70	(m)
h	=	0.00	(m)
tc ₁ , tc ₃	=	1.05	(m)
tc ₂	=	0.80	(m)

Lake Side (Outlet)

KP: **283+700**

No.: **Bc89**

Date: **27-May-2013**



3-BC

W	=	9.55	(m)
W ₁ , W ₃	=	2.85	(m)
W ₂	=	3.00	(m)
H	=	2.60	(m)
H ₁ , H ₃	=	1.95	(m)
H ₂	=	2.20	(m)
L	=	26.70	(m)
h	=	0.00	(m)
tc ₁ , tc ₃	=	3.15	(m)
tc ₂	=	2.90	(m)

Lake Side (Outlet)

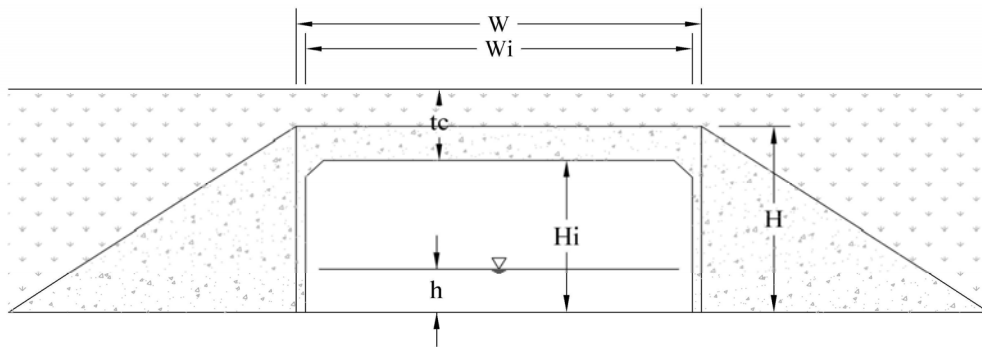
Note: BC means Box Culvert, W=Total Width, W₁/W₂/W₃=Net Width, H=Total Height, H₁/H₂/H₃=Net Height, L=Total Length, h=Water Depth, tc₁/tc₂/tc₃=Height of Soil over Top, River means the Tonle Sap River

KP: **285+100**

No.: **Bc90**

Date:

27-May-2013



1-BC

W	=	2.00	(m)
W _i	=	1.90	(m)
H	=	2.35	(m)
H _i	=	2.00	(m)
L	=	14.40	(m)
h	=	0.00	(m)
tc	=	0.85	(m)

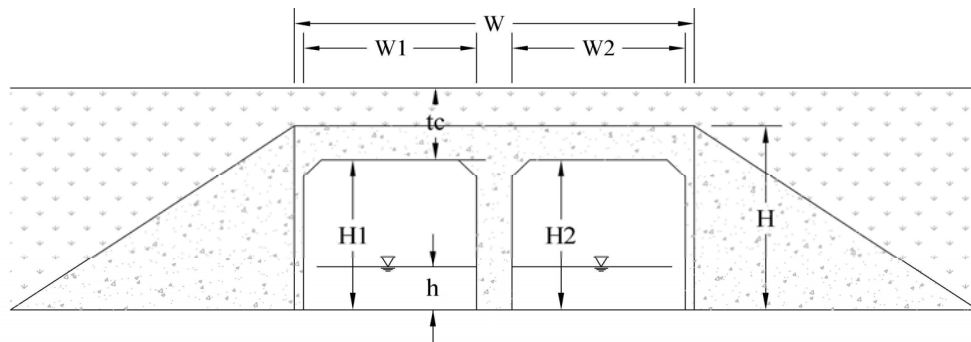
Lake Side (Outlet)

KP: **294+000**

No.: **Bc91**

Date:

27-May-2013



2-BC

W	=	6.30	(m)
W ₁ , W ₂	=	2.85	(m)
H	=	2.30	(m)
H ₁ , H ₂	=	1.85	(m)
L	=	23.20	(m)
h	=	0.80	(m)
tc	=	0.80	(m)

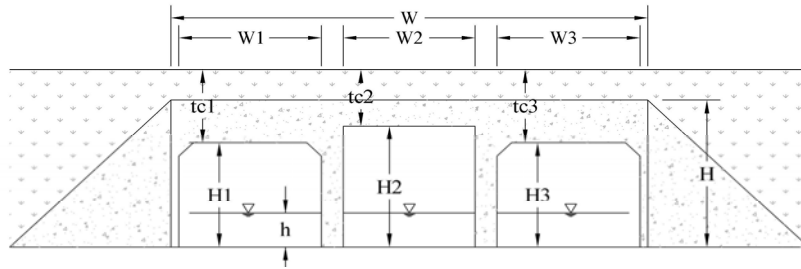
Lake Side (Outlet)

Note: BC means Box Culvert, W=Total Width, W₁/W₂/W_i =Net Width, H=Total Height, H₁/H₂/H_i =Net Height, L=Total Length, h=Water Depth, tc=Height of Soil over Top,

KP: 295+000

No.: Bc92

Date: 27-May-2013



3-BC

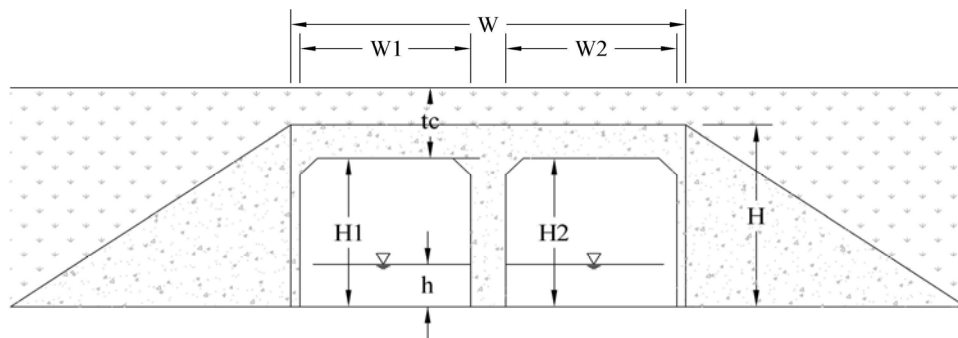
W	=	9.35	(m)
W ₁	=	2.85	(m)
W ₂	=	2.90	(m)
W ₃	=	2.75	(m)
H	=	2.65	(m)
H ₁ , H ₂ , H ₃	=	2.00	(m)
L	=	23.10	(m)
h	=	1.60	(m)
tc ₁ , tc ₂ , tc ₃	=	0.65	(m)

Lake Side (Outlet)

KP: 297+500

No.: Bc93

Date: 27-May-2013



2-BC

W	=	6.20	(m)
W ₁ , W ₂	=	2.85	(m)
H	=	1.90	(m)
H ₁ , H ₂	=	1.50	(m)
L	=	13.70	(m)
h	=	0.00	(m)
tc	=	0.55	(m)

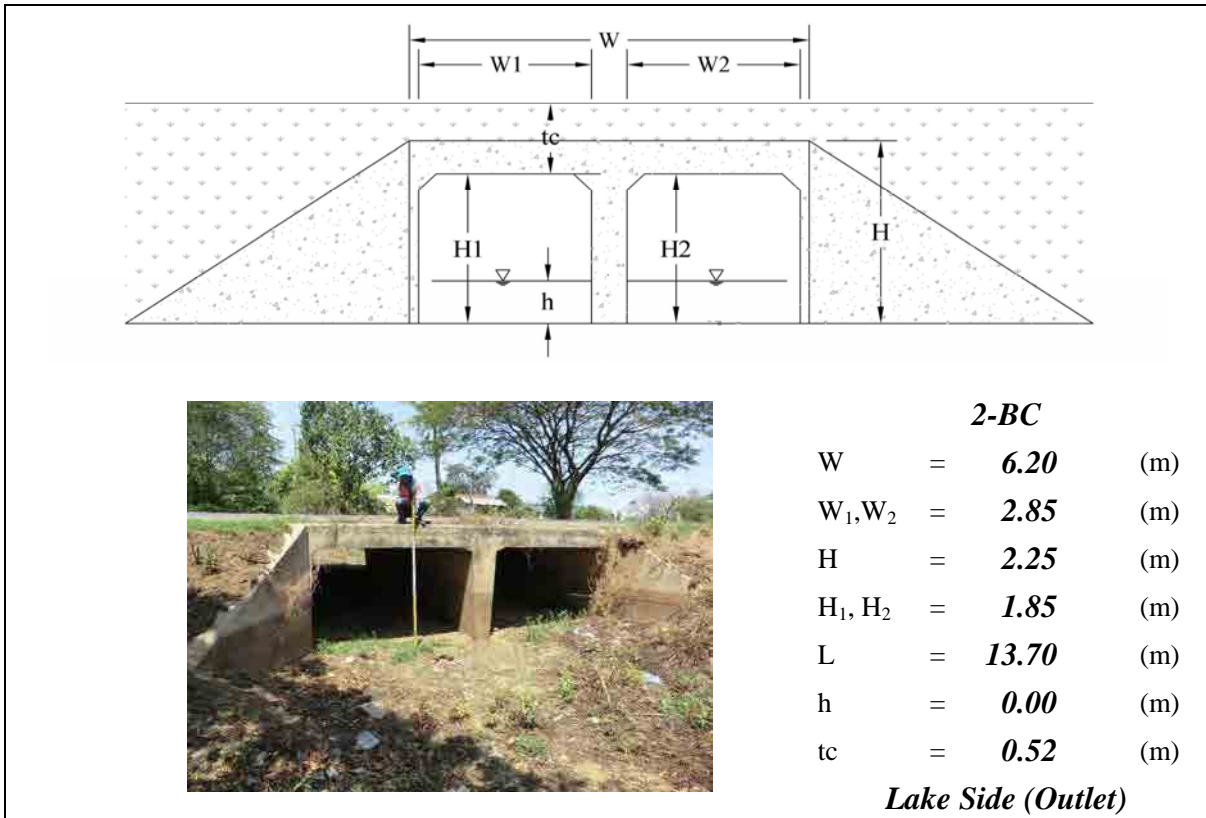
Lake Side (Outlet)

Note: BC means Box Culvert, W=Total Width, W₁/W₂/W₃=Net Width, H=Total Height, H₁/H₂/H₃=Net Height, L=Total Length, h=Water Depth, tc₁/tc₂/tc₃=Height of Soil over Top,

KP: 302+300

No.: Bc94

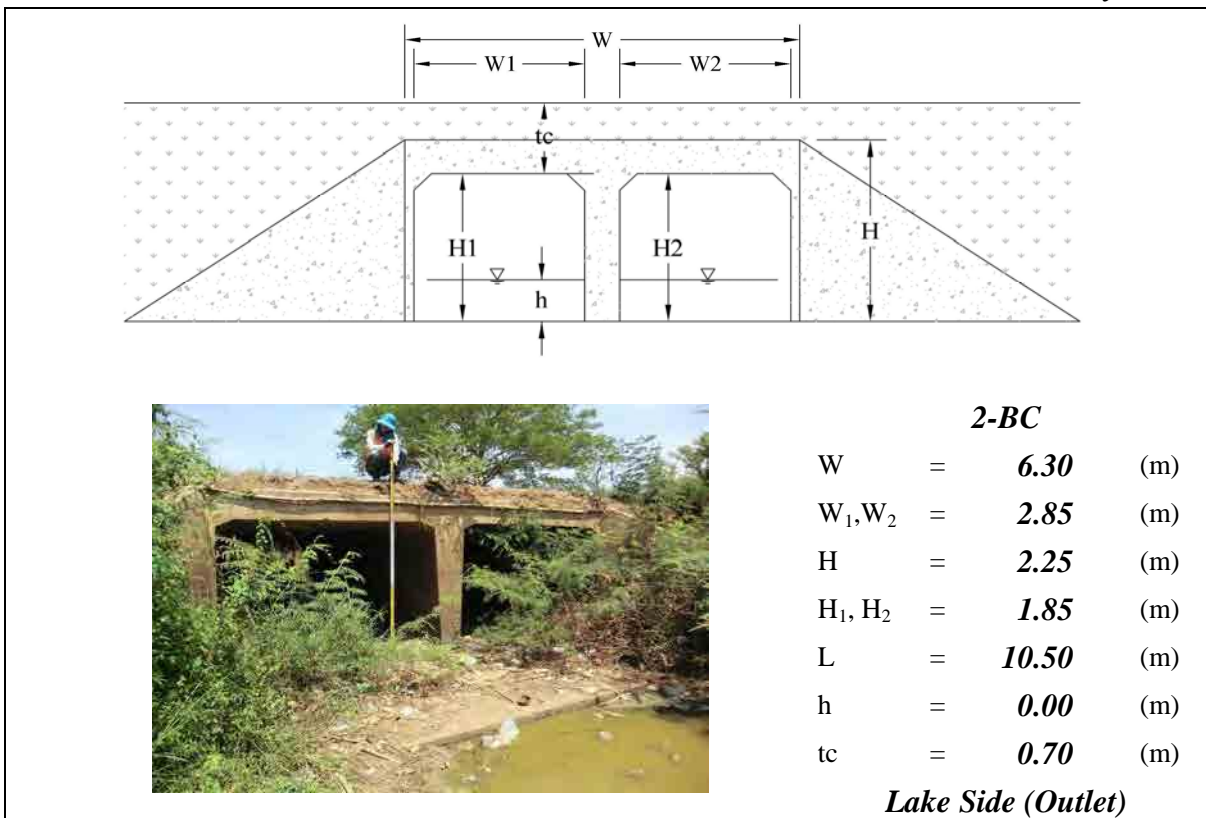
Date: 28-May-2013



KP: 303+600

No.: Bc95

Date: 28-May-2013

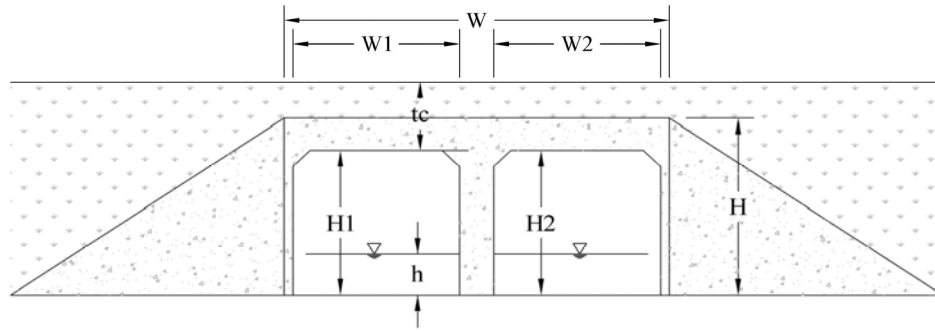


Note: BC means Box Culvert, W=Total Width, W₁/W₂=Net Width, H=Total Height, H₁/H₂=Net Height, L=Total Length, h=Water Depth,
tc=Height of Soil over Top,

KP: 306+400

No.: Bc96

Date: 28-May-2013



2-BC

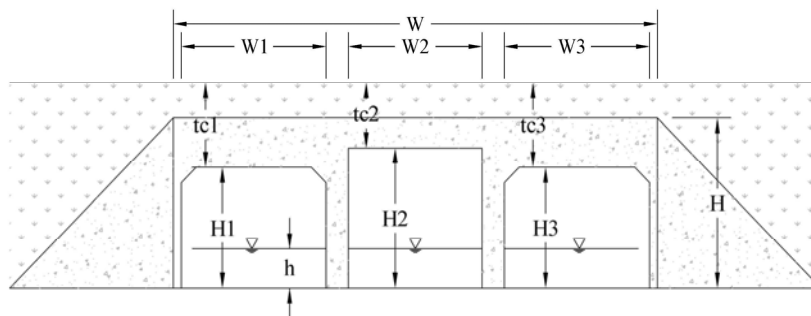
W	=	6.25	(m)
W ₁ , W ₂	=	2.85	(m)
H	=	1.95	(m)
H ₁ , H ₂	=	1.55	(m)
L	=	12.30	(m)
h	=	0.00	(m)
tc	=	0.56	(m)

Lake Side (Outlet)

KP: 309+100

No.: Bc97

Date: 28-May-2013



3-BC

W	=	9.60	(m)
W ₁ , W ₃	=	2.85	(m)
W ₂	=	3.00	(m)
H	=	2.55	(m)
H ₁ , H ₃	=	1.90	(m)
H ₂	=	2.15	(m)
L	=	13.70	(m)
h	=	0.10	(m)
tc ₁ , tc ₃	=	0.85	(m)
tc ₂	=	0.60	(m)

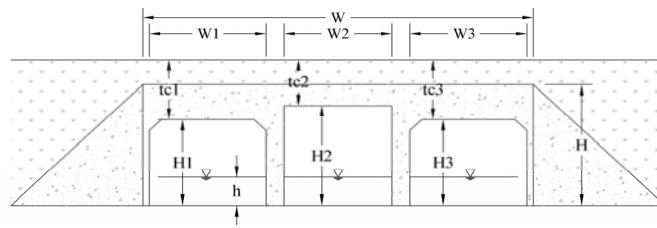
Lake Side (Outlet)

Note: BC means Box Culvert, W=Total Width, W₁/W₂/W₃=Net Width, H=Total Height, H₁/H₂/H₃=Net Height, L=Total Length, h=Water Depth, tc₁/tc₂/tc₃=Height of Soil over Top,

KP: **310+400**

No.: **Bc98**

Date: **28-May-2013**



3-BC

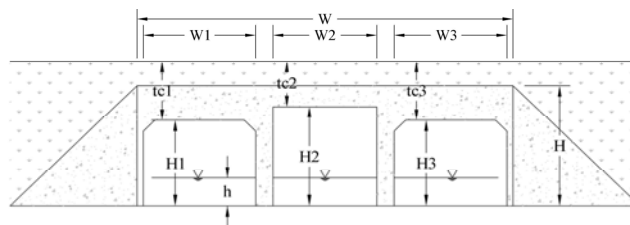
W	=	9.60	(m)
W ₁ , W ₃	=	2.85	(m)
W ₂	=	3.00	(m)
H	=	2.40	(m)
H ₁ , H ₃	=	1.75	(m)
H ₂	=	2.00	(m)
L	=	13.70	(m)
h	=	0.00	(m)
tc ₁ , tc ₃	=	0.77	(m)
tc ₂	=	0.52	(m)

Lake Side (Outlet)

KP: **311+300**

No.: **Bc99**

Date: **28-May-2013**



3-BC

W	=	9.60	(m)
W ₁ , W ₃	=	2.85	(m)
W ₂	=	3.00	(m)
H	=	2.60	(m)
H ₁ , H ₃	=	1.95	(m)
H ₂	=	2.20	(m)
L	=	13.70	(m)
h	=	0.00	(m)
tc ₁ , tc ₃	=	0.75	(m)
tc ₂	=	0.50	(m)

Lake Side (Outlet)

Note: BC means Box Culvert, W=Total Width, W₁/W₂/W₃=Net Width, H=Total Height, H₁/H₂/H₃=Net Height, L=Total Length, h=Water Depth, tc₁/tc₂/tc₃=Height of Soil over Top, Lake means the Tonle Sap Lake

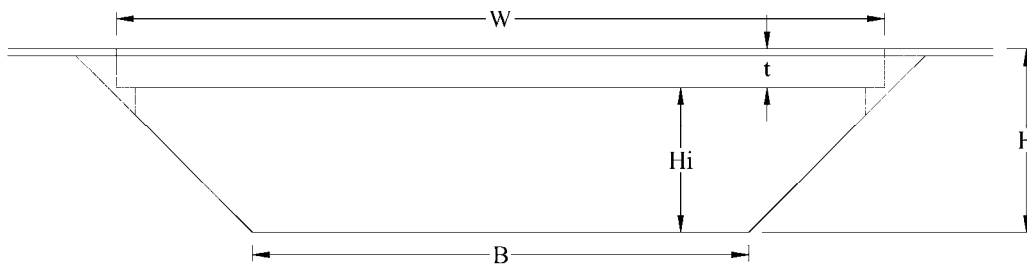
APPENDIX 6-2

INVENTORY SURVEY ON BRIDGE

KP: **177+200**

No.: **Br40**

Date: **May 20, 2013**



1-Br

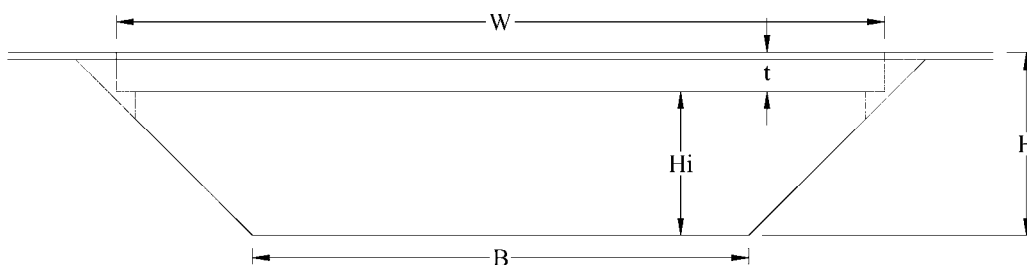
W	=	23.1	(m)
W _i	=	23.1	(m)
H	=	5.5	(m)
H _i	=	4.3	(m)
L	=	9.6	(m)
B	=	12.2	(m)
t	=	1.2	(m)
Pi	=	N/A	(m)

Lake Side (down stream)

KP: **178+500**

No.: **Br41**

Date: **May 20, 2013**



1-Br

W	=	19.8	(m)
W _i	=	19.8	(m)
H	=	4.4	(m)
H _i	=	2.8	(m)
L	=	10.0	(m)
B	=	11.0	(m)
t	=	1.6	(m)
Pi	=	N/A	(m)

Lake Side (down stream)

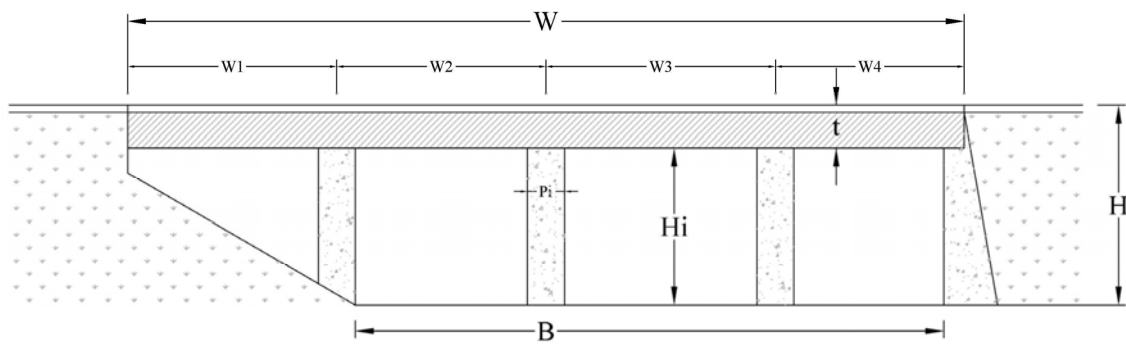
Note: Br means Bridge, W=Total Width, W_i=Net Width, H=Total Height, H_i=Net Height, L=Total Length, B=River bed Width, t=Girder thickness, N/A means data not available. Lake means Tonle Sap Lake

KP: **181+800**

No.: **Br42**

Date:

May 20, 2013



4-Br

W	=	19.2	(m)
W ₁ , W ₂ , W ₃ , W ₄	=	4.8	(m)
H	=	2.2	(m)
H _i	=	1.4	(m)
L	=	9.1	(m)
B	=	14.8	(m)
t	=	0.8	(m)
Pi	=	0.8	(m)

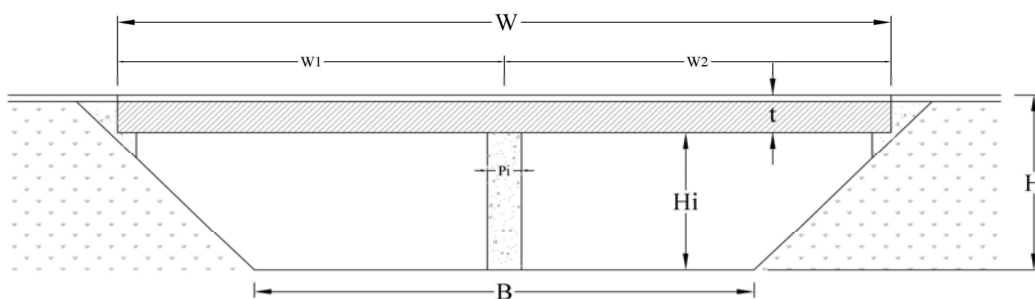
Lake Side (down stream)

KP: **182+800**

No.: **Br43**

Date:

May 20, 2013



2-Br

W	=	42.6	(m)
W ₁ , W ₂	=	21.3	(m)
H	=	3.5	(m)
H _i	=	2.9	(m)
L	=	10.0	(m)
B	=	35.7	(m)
t	=	0.55	(m)
Pi	=	0.9	(m)

Lake Side (down stream)

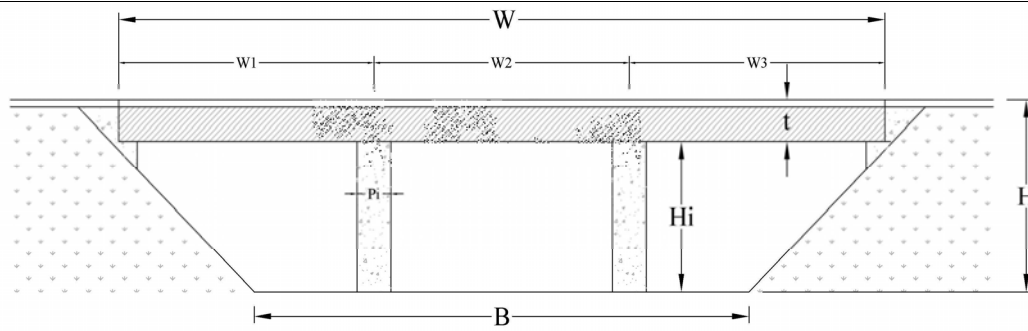
Note: Br means Bridge, W=Total Width, W_i=Net Width, H=Total Height, H_i=Net Height, L=Total Length, B=River bed Width, t=Girder thickness, N/A means data not available. Lake means Tonle Sap Lake

KP: **183+300**

No.: **Br44**

Date:

May 20, 2013



3-Br

W	=	45.3	(m)
W_1, W_2, W_3	=	15.1	(m)
H	=	4.9	(m)
H_i	=	3.6	(m)
L	=	9.0	(m)
B	=	35.6	(m)
t	=	1.25	(m)
Pi	=	1.5	(m)

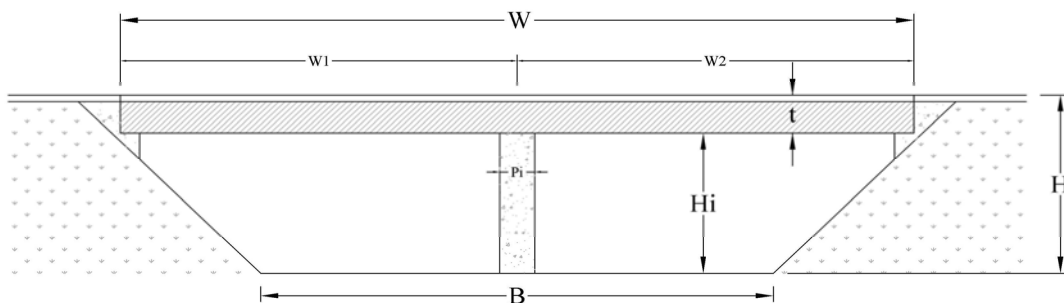
Lake Side (down stream)

KP: **183+900**

No.: **Br45**

Date:

May 21, 2013



2-Br

W	=	42.5	(m)
W_1, W_2	=	21.25	(m)
H	=	6.0	(m)
H_i	=	5.3	(m)
L	=	10.0	(m)
B	=	30.6	(m)
t	=	0.65	(m)
Pi	=	0.6	(m)

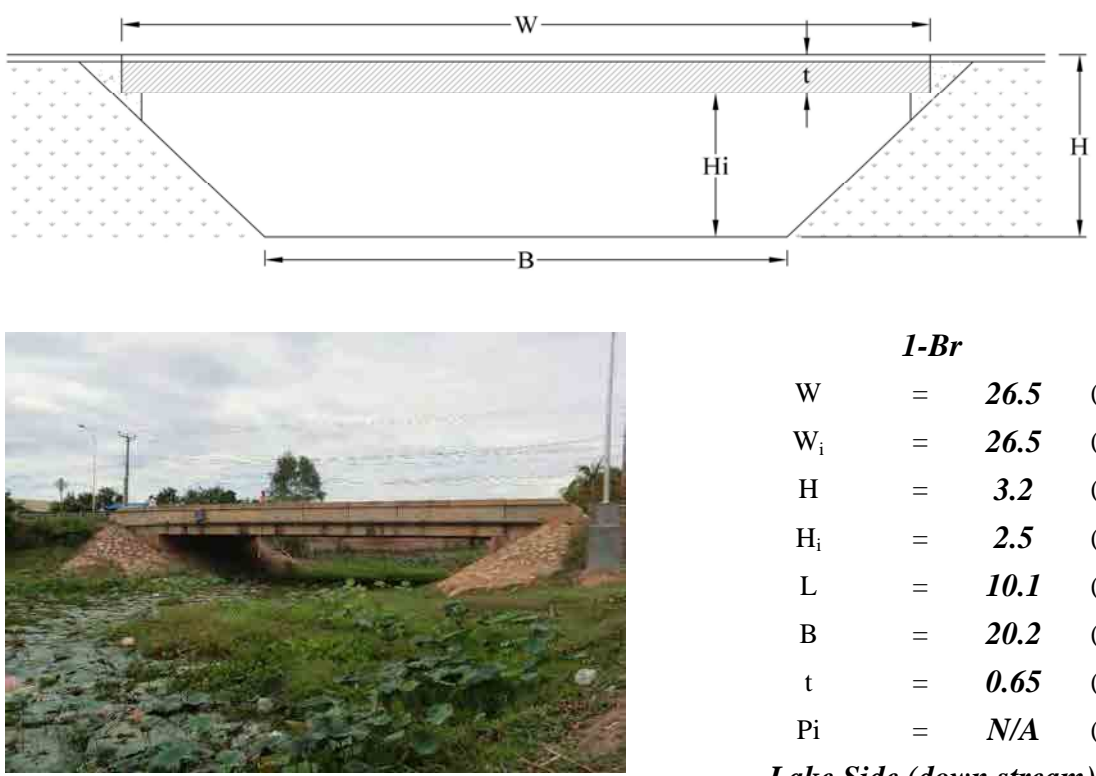
Lake Side (down stream)

Note: Br means Bridge, W=Total Width, W_i =Net Width, H=Total Height, H_i =Net Height, L=Total Length, B=River bed Width, t=Girder thickness, N/A means data not available. Lake means Tonle Sap Lake

KP: **184+100**

No.: **Br46**

Date: **May 21, 2013**



The diagram shows a cross-section of a bridge with a total width W , a river bed width B , a total height H , and a net height H_i . The girder thickness is t . The bridge is supported by two abutments. The photograph shows the bridge in a natural setting with vegetation and a cloudy sky.

<i>1-Br</i>			
W	=	26.5	(m)
W_i	=	26.5	(m)
H	=	3.2	(m)
H_i	=	2.5	(m)
L	=	10.1	(m)
B	=	20.2	(m)
t	=	0.65	(m)
P_i	=	N/A	(m)

Lake Side (down stream)

KP: **185+700**

No.: **Br47** ✕

Date: **May 21, 2013**

<i>1-Br</i>			
W	=		(m)
W_i	=		(m)
H	=		(m)
H_i	=		(m)
L	=		(m)
B	=		(m)
t	=		(m)
P_i	=		(m)

Lake Side (down stream)

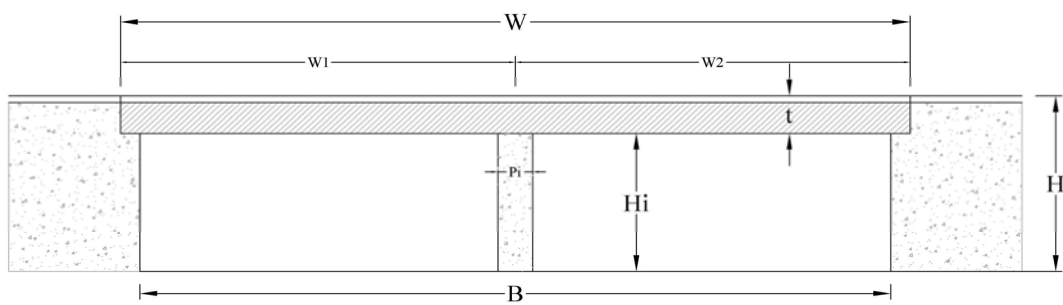
Note: Br means Bridge, W=Total Width, W_i =Net Width, H=Total Height, H_i =Net Height, L=Total Length, B=River bed Width, t=Girder thickness, N/A means data not available. Lake means Tonle Sap Lake

KP: **187+400**

No.: **Br48**

Date:

May 21, 2013



2-Br

W	=	39.1	(m)
W ₁ , W ₂	=	19.55	(m)
H	=	6.1	(m)
H _i	=	4.5	(m)
L	=	8.8	(m)
B	=	39.1	(m)
t	=	1.6	(m)
Pi	=	1.6	(m)

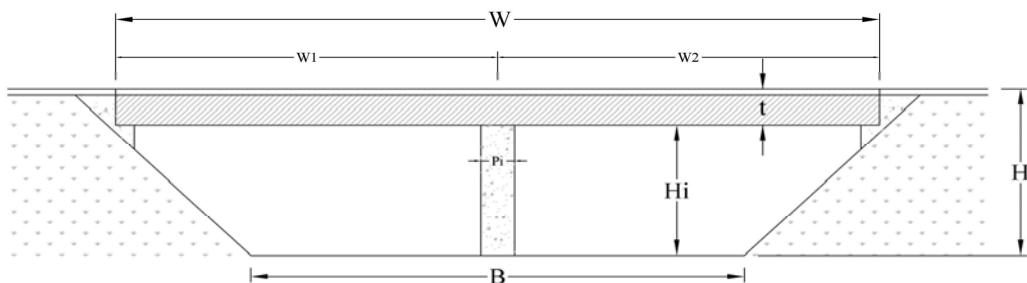
Lake Side (down stream)

KP: **187+700**

No.: **Br49**

Date:

May 21, 2013



2-Br

W	=	30.5	(m)
W ₁ , W ₂	=	15.25	(m)
H	=	3.4	(m)
H _i	=	2.5	(m)
L	=	10.0	(m)
B	=	23.8	(m)
t	=	0.9	(m)
Pi	=	0.7	(m)

Lake Side (down stream)

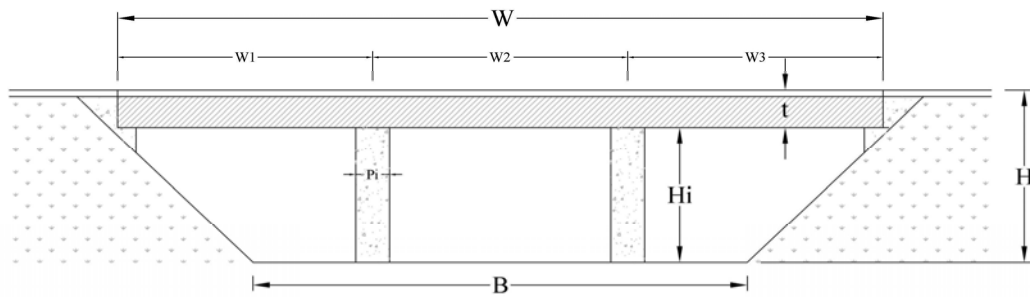
Note: Br means Bridge, W=Total Width, W_i=Net Width, H=Total Height, H_i=Net Height, L=Total Length, B=River bed Width, t=Girder thickness, N/A means data not available. Lake means Tonle Sap Lake

KP: **188+100**

No.: **Br50**

Date:

May 21, 2013



3-Br

W	=	61.0	(m)
W ₁	=	18.0	(m)
W ₂ , W ₃	=	21.5	(m)
H	=	2.5	(m)
H _i	=	1.9	(m)
L	=	10.0	(m)
B	=	56.0	(m)
t	=	0.65	(m)
Pi	=	0.9	(m)

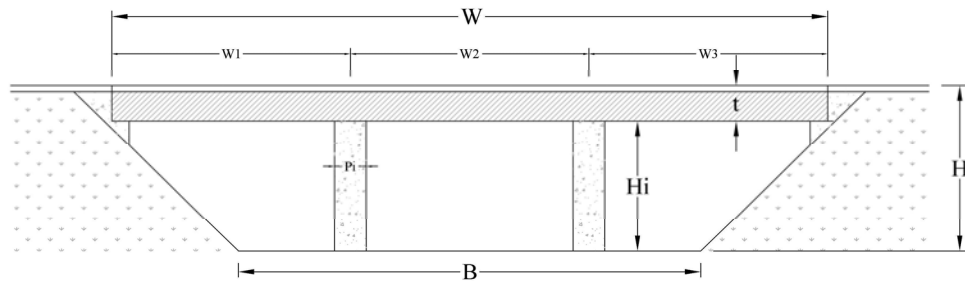
Lake Side (down stream)

KP: **188+250**

No.: **Br51**

Date:

May 21, 2013



3-Br

W	=	51.5	(m)
W ₁	=	15.0	(m)
W ₂ , W ₃	=	18.25	(m)
H	=	2.9	(m)
H _i	=	2.2	(m)
L	=	10.0	(m)
B	=	45.8	(m)
t	=	0.65	(m)
Pi	=	0.9	(m)

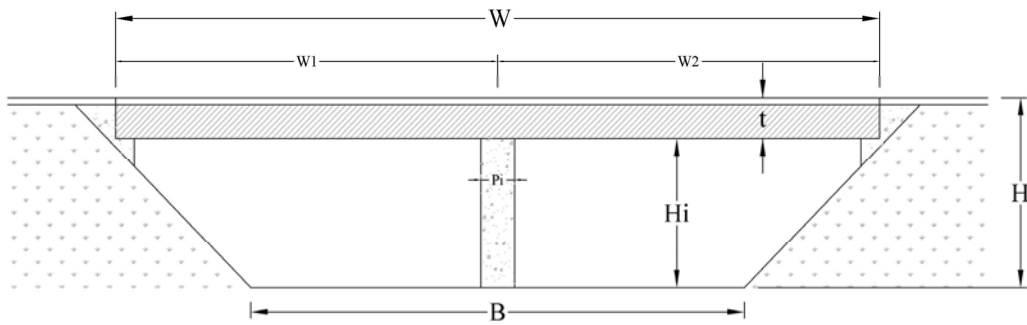
Lake Side (down stream)

Note: Br means Bridge, W=Total Width, W_i=Net Width, H=Total Height, H_i=Net Height, L=Total Length, B=River bed Width, t=Girder thickness, N/A means data not available. Lake means Tonle Sap Lake

KP: **189+250**

No.: **Br52**

Date: **May 21, 2013**



4-Br

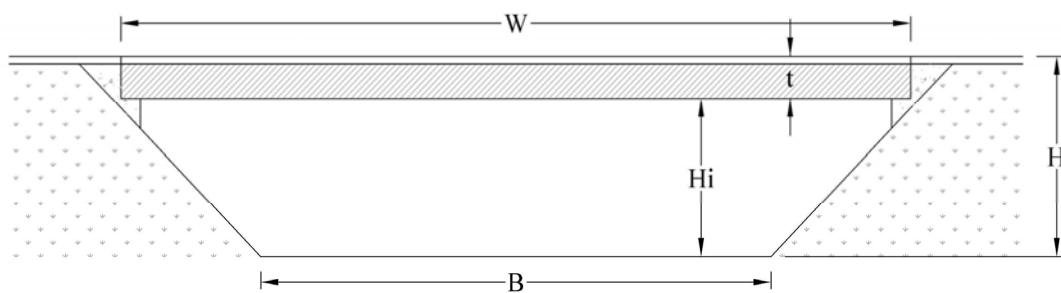
W	=	36.5	(m)
W_1, W_2	=	18.25	(m)
H	=	3.6	(m)
H_i	=	3.0	(m)
L	=	10.0	(m)
B	=	29.4	(m)
t	=	0.6	(m)
P_i	=	0.9	(m)

Lake Side (down stream)

KP: **189+900**

No.: **Br53**

Date: **May 21, 2013**



1-Br

W	=	24.5	(m)
W_i	=	24.5	(m)
H	=	2.1	(m)
H_i	=	2.5	(m)
L	=	10.0	(m)
B	=	20.3	(m)
t	=	0.6	(m)
P_i	=	N/A	(m)

Lake Side (down stream)

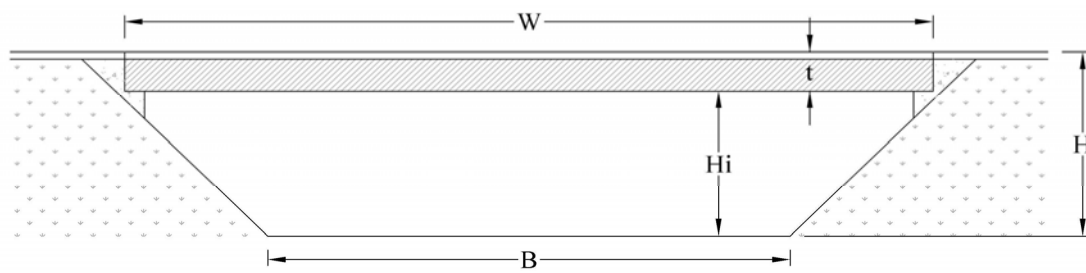
Note: Br means Bridge, W =Total Width, W_i =Net Width, H =Total Height, H_i =Net Height, L =Total Length, B =River bed Width, t =Girder thickness, N/A means data not available. Lake means Tonle Sap Lake

KP: **190+150**

No.: **Br54**

Date:

May 21, 2013



1-Br

W	=	24.5	(m)
W _i	=	24.5	(m)
H	=	1.9	(m)
H _i	=	1.3	(m)
L	=	10.0	(m)
B	=	20.8	(m)
t	=	0.55	(m)
Pi	=	N/A	(m)

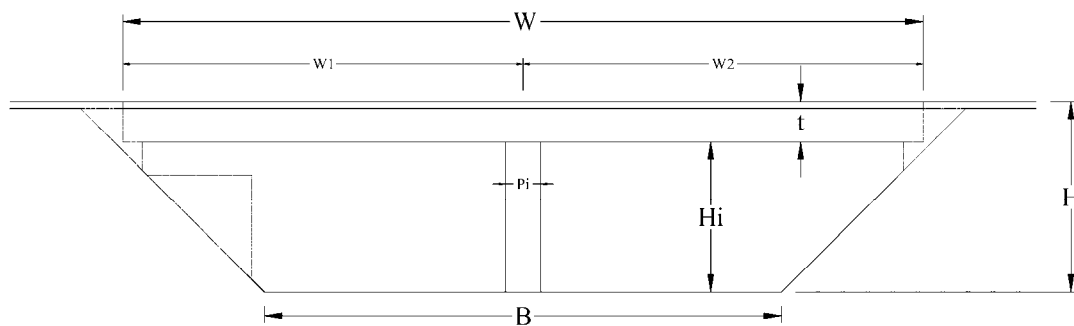
Lake Side (down stream)

KP: **191+100**

No.: **Br55**

Date:

May 21, 2013



2-Br

W	=	36.4	(m)
W ₁ , W ₂	=	18.2	(m)
H	=	4.9	(m)
H _i	=	4.3	(m)
L	=	10.0	(m)
B	=	26.7	(m)
t	=	0.55	(m)
Pi	=	0.4	(m)

Lake Side (down stream)

Note: Br means Bridge, W=Total Width, W_i=Net Width, H=Total Height, H_i=Net Height, L=Total Length, B=River bed Width, t=Girder thickness, N/A means data not available. Lake means Tonle Sap Lake

KP: **201+800**

No.: **Br56**

Date: **May 21, 2013**

1-Br			
W	=	18.5	(m)
W _i	=	18.5	(m)
H	=	2.4	(m)
H _i	=	2.0	(m)
L	=	10.0	(m)
B	=	13.8	(m)
t	=	0.4	(m)
Pi	=	N/A	(m)

Lake Side (down stream)

KP: **208+500**

No.: **Br57** ✕

Date: **May 21, 2013**

2-Br			
W	=		(m)
W ₁ , W ₂	=		(m)
H	=		(m)
H _i	=		(m)
L	=		(m)
B	=		(m)
t	=		(m)
Pi	=		(m)

Lake Side (down stream)

Note: Br means Bridge, W=Total Width, W_i=Net Width, H=Total Height, H_i=Net Height, L=Total Length, B=River bed Width, t=Girder thickness, N/A means data not available. Lake means Tonle Sap Lake

KP: **215+750**

No.: **Br58** X

Date: **May 22, 2013**

3-Br			
W	=		(m)
W ₁	=		(m)
W ₂ , W ₃	=		(m)
H	=		(m)
H _i	=		(m)
L	=		(m)
B	=		(m)
t	=		(m)
Pi	=		(m)
Lake Side (down stream)			

KP: **219+600**

No.: **Br59** X

Date: **May 22, 2013**

3-Br			
W	=		(m)
W ₁	=		(m)
W ₂	=		(m)
W ₃	=		(m)
H	=		(m)
H _i	=		(m)
L	=		(m)
B	=		(m)
t	=		(m)
Pi	=		(m)
Lake Side (down stream)			

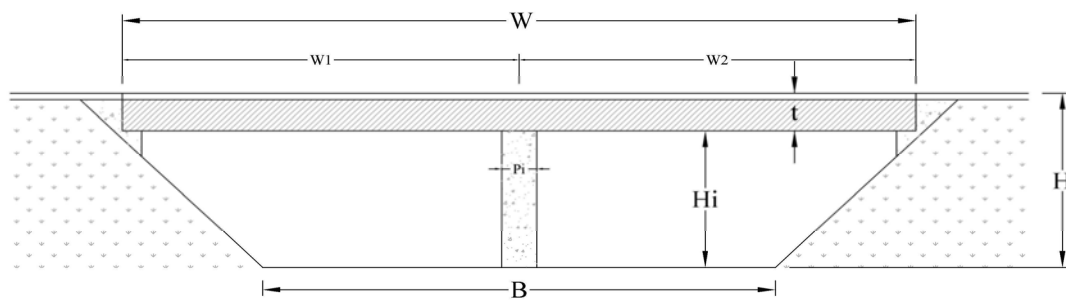
Note: Br means Bridge, W=Total Width, W_i=Net Width, H=Total Height, H_i=Net Height, L=Total Length, B=River bed Width, t=Girder thickness, N/A means data not available. Lake means Tonle Sap Lake

KP: **220+800**

No.: **Br60**

Date:

May 22, 2013



2-Br

W	=	30.4	(m)
W ₁ , W ₂	=	15.2	(m)
H	=	4.2	(m)
H _i	=	3.8	(m)
L	=	10.0	(m)
B	=	22.1	(m)
t	=	0.4	(m)
Pi	=	0.4	(m)

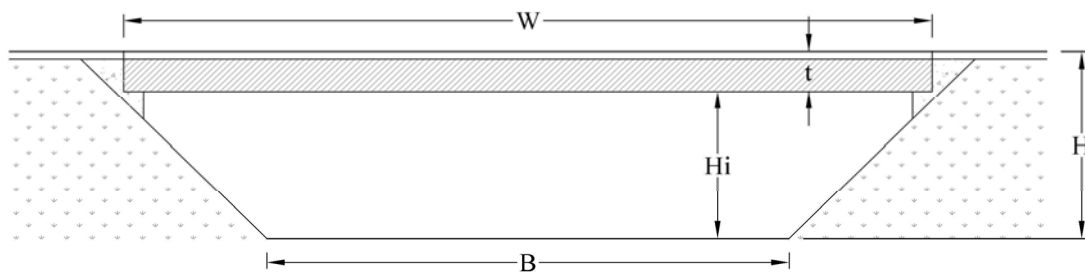
Lake Side (down stream)

KP: **222+650**

No.: **Br61**

Date:

May 22, 2013



1-Br

W	=	18.5	(m)
W _i	=	18.5	(m)
H	=	2.9	(m)
H _i	=	2.5	(m)
L	=	10.0	(m)
B	=	12.7	(m)
t	=	0.4	(m)
Pi	=	N/A	(m)

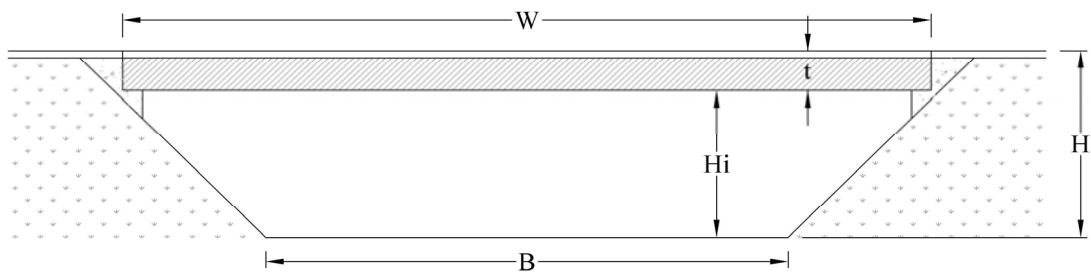
Lake Side (down stream)

Note: Br means Bridge, W=Total Width, W_i=Net Width, H=Total Height, H_i=Net Height, L=Total Length, B=River bed Width, t=Girder thickness, N/A means data not available. Lake means Tonle Sap Lake

KP: **223+650**

No.: **Br62**

Date: **May 22, 2013**



1-Br

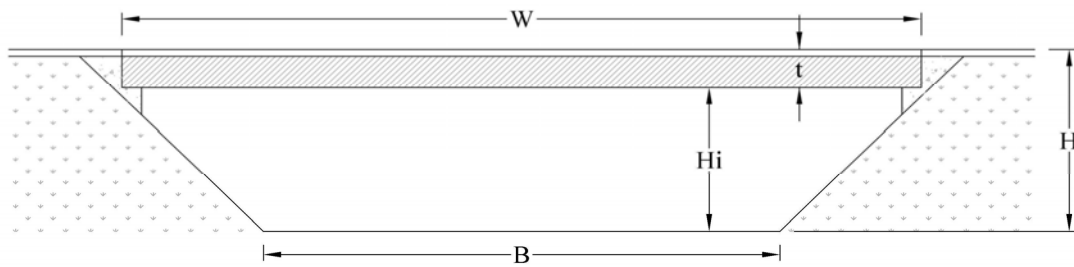
W	=	18.5	(m)
W_i	=	18.5	(m)
H	=	3.0	(m)
H_i	=	2.6	(m)
L	=	10.0	(m)
B	=	12.5	(m)
t	=	0.4	(m)
Pi	=	N/A	(m)

Lake Side (down stream)

KP: **242+850**

No.: **Br63**

Date: **May 23, 2013**



1-Br

W	=	24.5	(m)
W_i	=	24.5	(m)
H	=	3.0	(m)
H_i	=	2.4	(m)
L	=	10.0	(m)
B	=	18.6	(m)
t	=	0.6	(m)
Pi	=	N/A	(m)

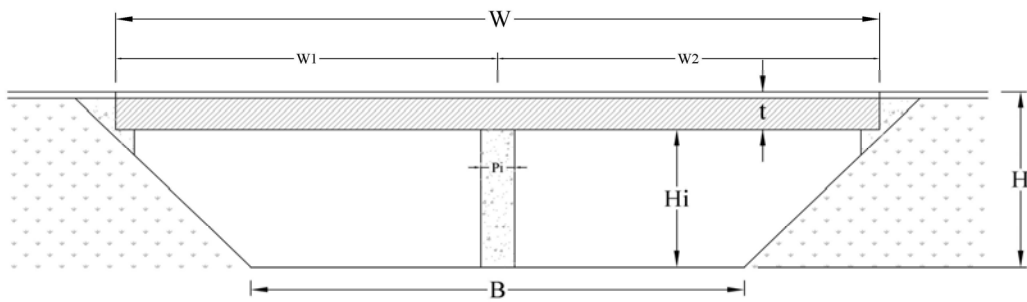
Lake Side (down stream)

Note: Br means Bridge, W=Total Width, W_i =Net Width, H=Total Height, H_i =Net Height, L=Total Length, B=River bed Width, t=Girder thickness, N/A means data not available. Lake means Tonle Sap Lake

KP: **243+600**

No.: **Br64**

Date: **May 23, 2013**



2-Br

W	=	37.0	(m)
W ₁ , W ₂	=	18.5	(m)
H	=	3.1	(m)
H _i	=	2.6	(m)
L	=	10.0	(m)
B	=	30.9	(m)
t	=	0.5	(m)
Pi	=	0.4	(m)

Lake Side (down stream)

KP: **244+400**

No.: **Br65** ✕

Date: **May 23, 2013**

3-Br

W	=		(m)
W ₁	=		(m)
H	=		(m)
H _i	=		(m)
L	=		(m)
B	=		(m)
t	=		(m)
Pi	=		(m)

Lake Side (down stream)

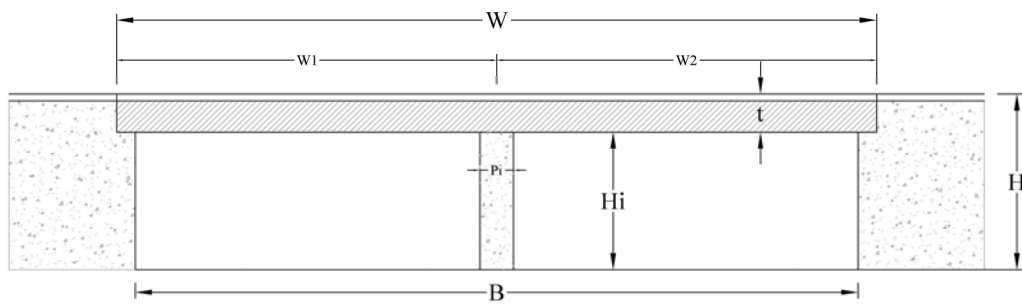
Note: Br means Bridge, W=Total Width, W_i=Net Width, H=Total Height, H_i=Net Height, L=Total Length, B=River bed Width, t=Girder thickness, N/A means data not available. Lake means Tonle Sap Lake

KP: **245+900**

No.: **Br66**

Date:

May 23, 2013



2-Br

W	=	15.8	(m)
W ₁ , W ₂	=	7.9	(m)
H	=	2.4	(m)
H _i	=	1.9	(m)
L	=	9.1	(m)
B	=	15.8	(m)
t	=	0.5	(m)
Pi	=	0.8	(m)

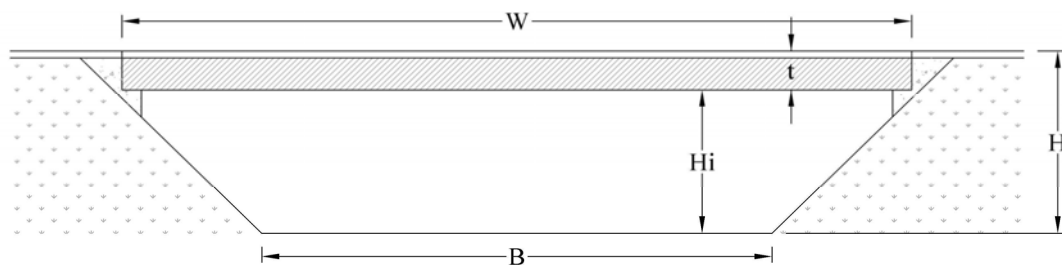
Lake Side (down stream)

KP: **255+250**

No.: **Br67**

Date:

May 23, 2013



1-Br

W	=	21.5	(m)
W _i	=	21.5	(m)
H	=	2.4	(m)
H _i	=	1.9	(m)
L	=	10.0	(m)
B	=	16.7	(m)
t	=	0.5	(m)
Pi	=	N/A	(m)

Lake Side (down stream)

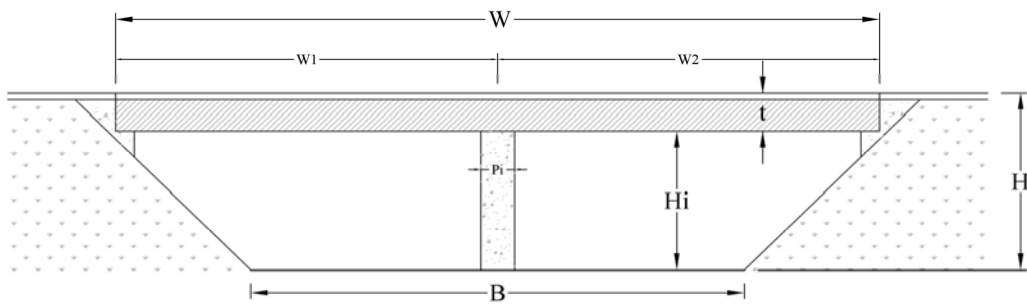
Note: Br means Bridge, W=Total Width, W_i=Net Width, H=Total Height, H_i=Net Height, L=Total Length, B=River bed Width, t=Girder thickness, N/A means data not available. Lake means Tonle Sap Lake

KP: **255+600**

No.: **Br68**

Date:

May 23, 2013



2-Br

W	=	30.5	(m)
W ₁ , W ₂	=	15.25	(m)
H	=	2.3	(m)
H _i	=	1.9	(m)
L	=	10.0	(m)
B	=	25.9	(m)
t	=	0.4	(m)
Pi	=	0.4	(m)

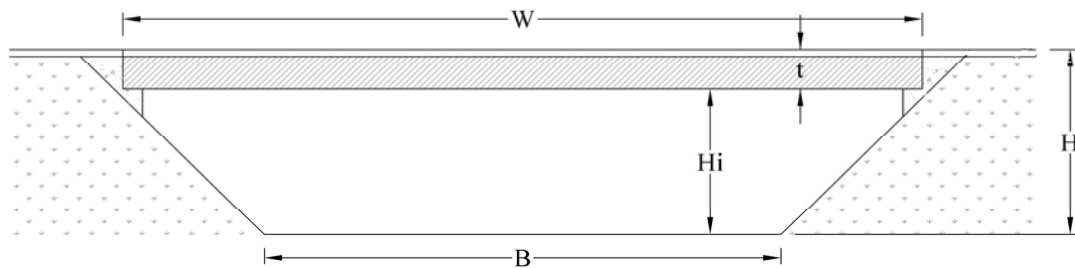
Lake Side (down stream)

KP: **256+550**

No.: **Br69**

Date:

May 23, 2013



1-Br

W	=	21.5	(m)
W _i	=	21.5	(m)
H	=	2.5	(m)
H _i	=	2.0	(m)
L	=	10.0	(m)
B	=	16.5	(m)
t	=	0.5	(m)
Pi	=	N/A	(m)

Lake Side (down stream)

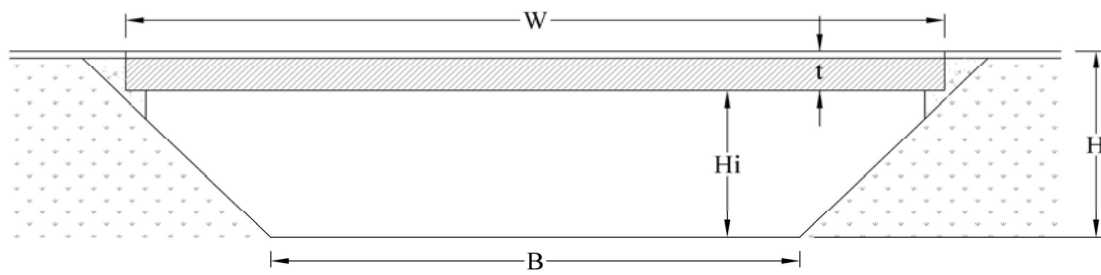
Note: Br means Bridge, W=Total Width, W_i=Net Width, H=Total Height, H_i=Net Height, L=Total Length, B=River bed Width, t=Girder thickness, N/A means data not available. Lake means Tonle Sap Lake

KP: 257+900

No.: Br70

Date:

May 23, 2013



1-Br

W	=	18.5	(m)
W _i	=	18.5	(m)
H	=	3.0	(m)
H _i	=	2.5	(m)
L	=	10.0	(m)
B	=	12.6	(m)
t	=	0.45	(m)
Pi	=	N/A	(m)

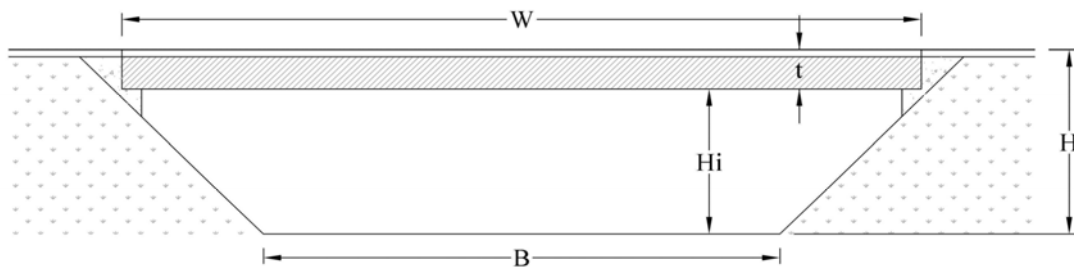
Lake Side (down stream)

KP: 265+348

No.: Br71

Date:

May 24, 2013



1-Br

W	=	18.5	(m)
W _i	=	18.5	(m)
H	=	2.9	(m)
H _i	=	2.4	(m)
L	=	18.5	(m)
B	=	12.8	(m)
t	=	0.45	(m)
Pi	=	N/A	(m)

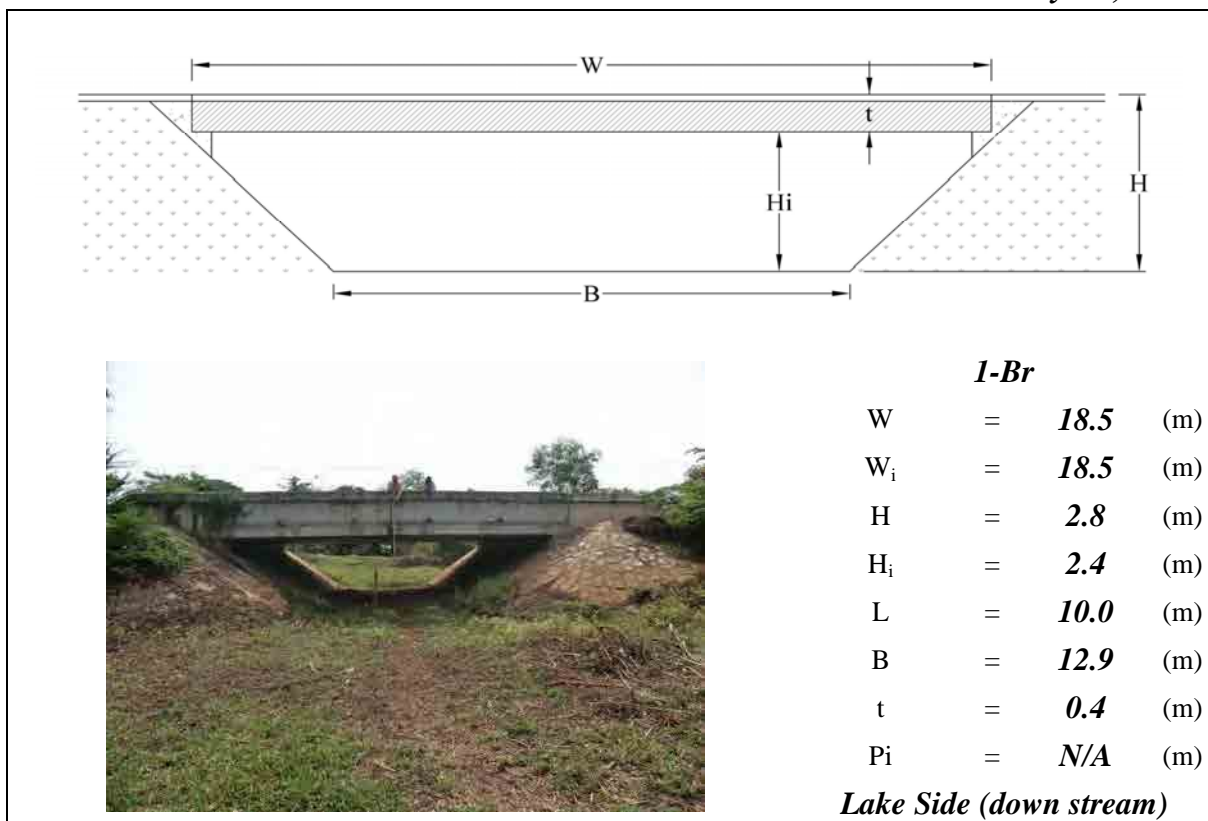
Lake Side (down stream)

Note: Br means Bridge, W=Total Width, W_i=Net Width, H=Total Height, H_i=Net Height, L=Total Length, B=River bed Width, t=Girder thickness, N/A means data not available. Lake means Tonle Sap Lake

KP: **270+900**

No.: **Br72**

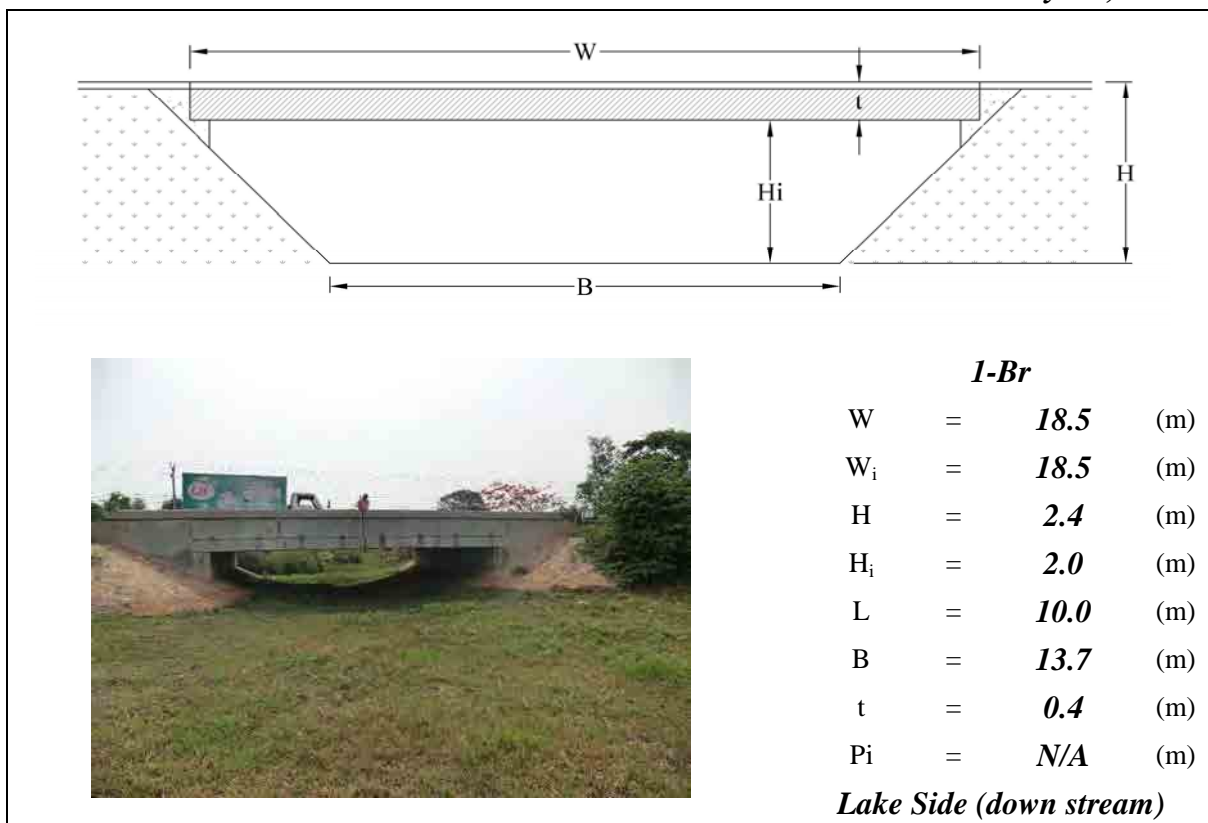
Date: **May 24, 2013**



KP: **271+700**

No.: **Br73**

Date: **May 24, 2013**



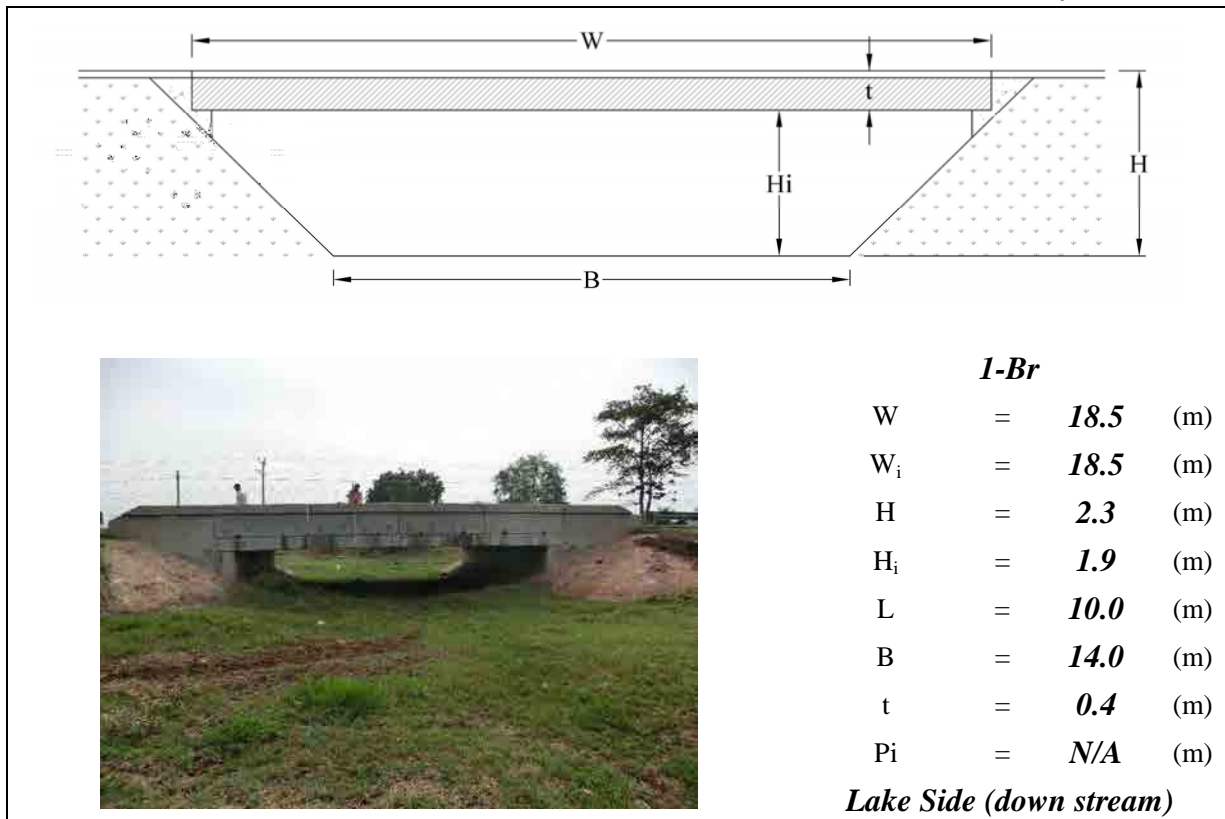
Note: Br means Bridge, W=Total Width, W_i=Net Width, H=Total Height, H_i=Net Height, L=Total Length, B=River bed Width, t=Girder thickness, N/A means data not available. Lake means Tonle Sap Lake

KP: **272+650**

No.: **Br74**

Date:

May 24, 2013

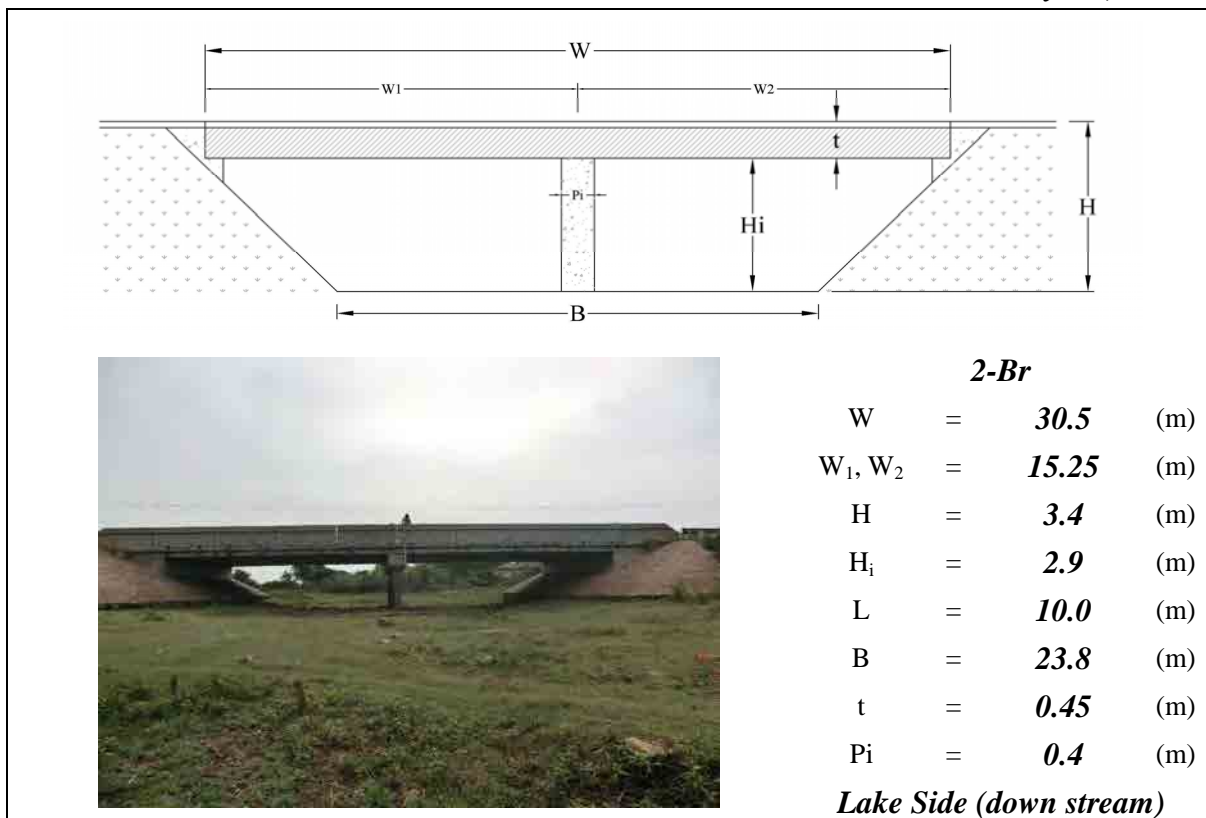


KP: **273+300**

No.: **Br75**

Date:

May 24, 2013



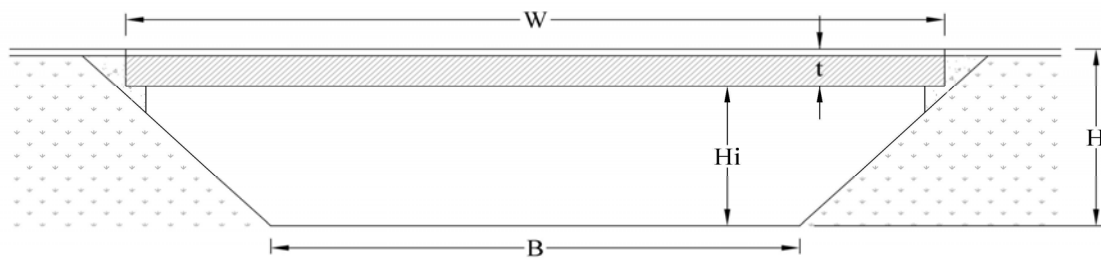
Note: Br means Bridge, W =Total Width, W_i =Net Width, H =Total Height, H_i =Net Height, L =Total Length, B =River bed Width, t =Girder thickness, N/A means data not available. Lake means Tonle Sap Lake

KP: **275+650**

No.: **Br76**

Date:

May 26, 2013



1-Br

W	=	18.5	(m)
W _i	=	18.5	(m)
H	=	2.5	(m)
H _i	=	2.1	(m)
L	=	10.0	(m)
B	=	13.5	(m)
t	=	0.45	(m)
Pi	=	N/A	(m)

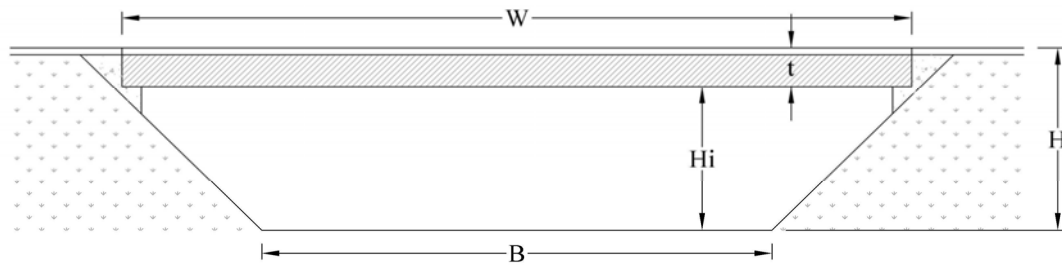
Lake Side (down stream)

KP: **276+550**

No.: **Br77**

Date:

May 26, 2013



1-Br

W	=	18.5	(m)
W _i	=	18.5	(m)
H	=	2.4	(m)
H _i	=	2.0	(m)
L	=	10.0	(m)
B	=	13.7	(m)
t	=	0.45	(m)
Pi	=	N/A	(m)

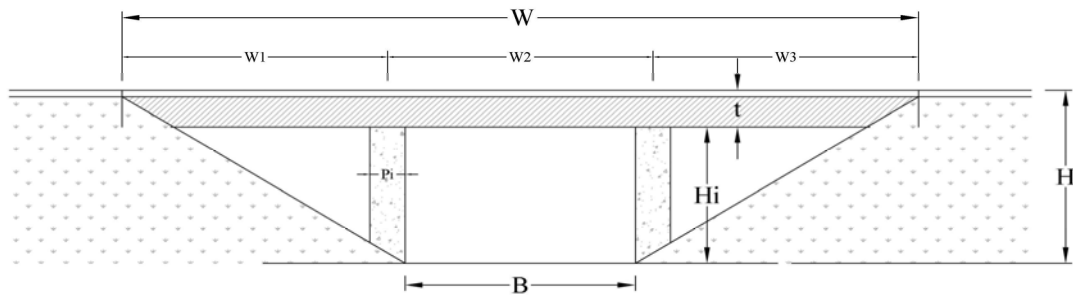
Lake Side (down stream)

Note: Br means Bridge, W=Total Width, W_i=Net Width, H=Total Height, H_i=Net Height, L=Total Length, B=River bed Width, t=Girder thickness, N/A means data not available. Lake means Tonle Sap Lake

KP: **292+000**

No.: **Br78**

Date: **May 27, 2013**



3-Br

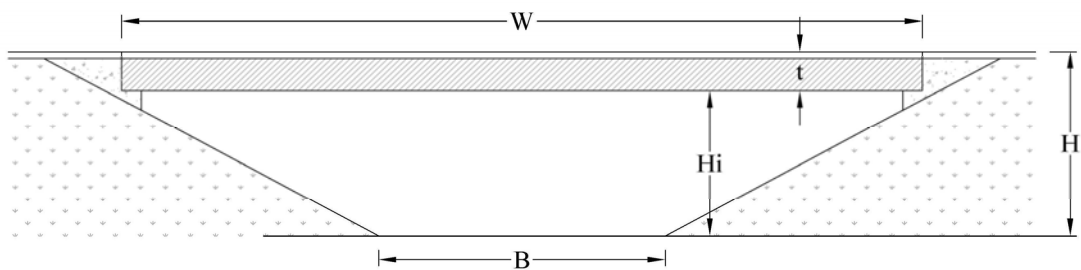
W	=	130.8	(m)
W ₁ , W ₂ , W ₃	=	43.6	(m)
H	=	12.6	(m)
H _i	=	12.6	(m)
L	=	6.6	(m)
B	=	12.6	(m)
t	=	N/A	(m)
Pi	=	N/A	(m)

Lake Side (down stream)

KP: **303+400**

No.: **Br79**

Date: **May 28, 2013**



1-Br

W	=	13.7	(m)
W _i	=	13.65	(m)
H	=	5.1	(m)
H _i	=	3.8	(m)
L	=	7.0	(m)
B	=	3.8	(m)
t	=	1.35	(m)
Pi	=	N/A	(m)

Lake Side (down stream)

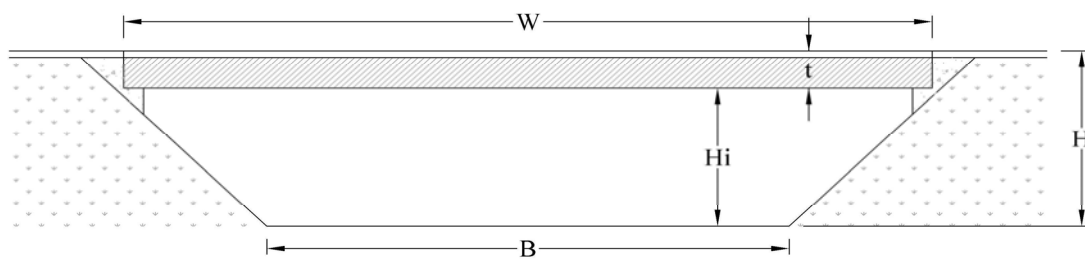
Note: Br means Bridge, W=Total Width, W_i=Net Width, H=Total Height, H_i=Net Height, L=Total Length, B=River bed Width, t=Girder thickness, N/A means data not available. Lake means Tonle Sap Lake

KP: **305+800**

No.: **Br80**

Date:

May 28, 2013



1-Br

W	=	26.3	(m)
W_i	=	26.25	(m)
H	=	3.4	(m)
H_i	=	2.8	(m)
L	=	10.0	(m)
B	=	2.8	(m)
t	=	0.6	(m)
P_i	=	N/A	(m)

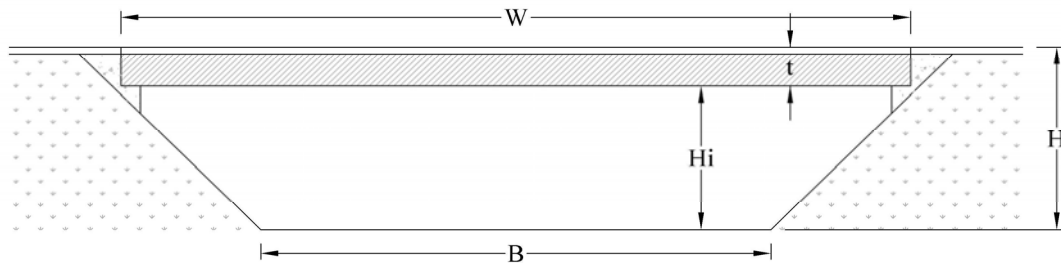
Lake Side (down stream)

KP: **307+200**

No.: **Br81**

Date:

May 28, 2013



1-Br

W	=	26.3	(m)
W_i	=	26.25	(m)
H	=	2.5	(m)
H_i	=	1.8	(m)
L	=	10.0	(m)
B	=	1.8	(m)
t	=	0.65	(m)
P_i	=	N/A	(m)

Lake Side (down stream)

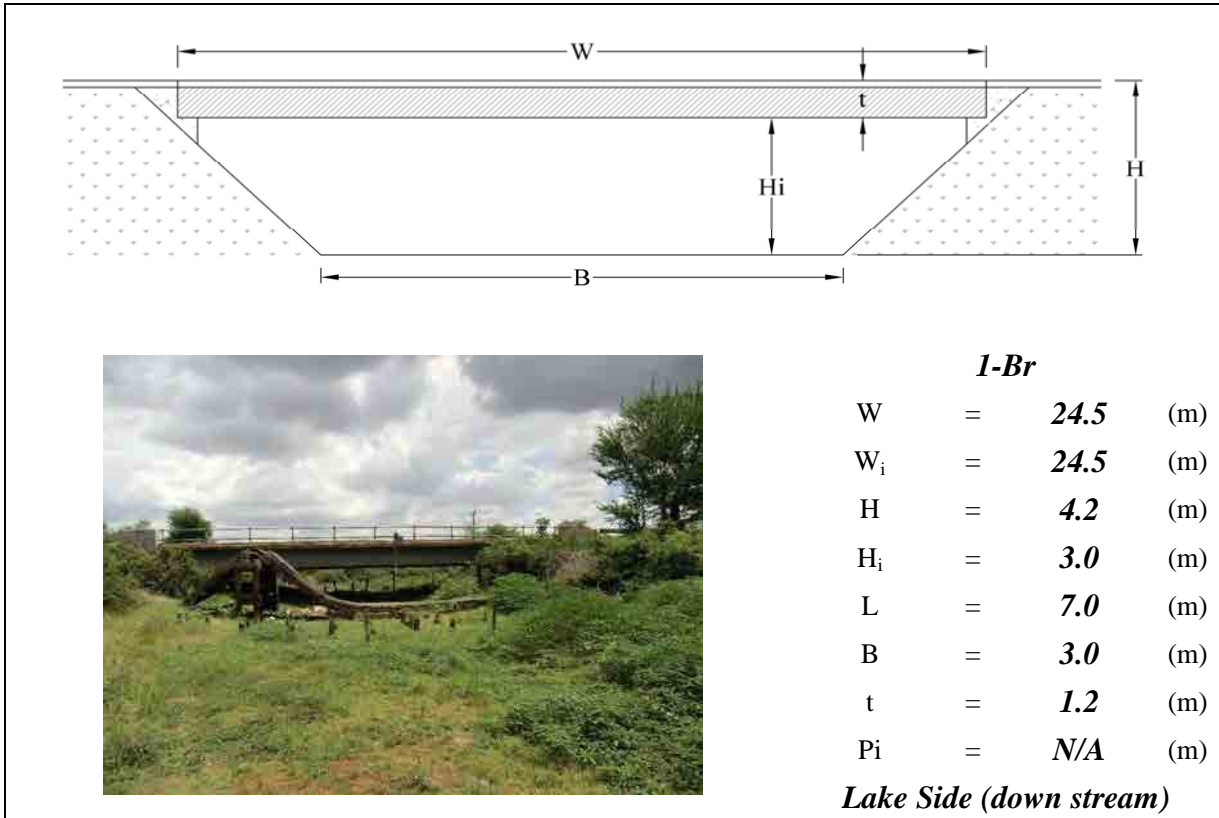
Note: Br means Bridge, W=Total Width, W_i =Net Width, H=Total Height, H_i =Net Height, L=Total Length, B=River bed Width, t=Girder thickness, N/A means data not available. Lake means Tonle Sap Lake

KP: **312+000**

No.: **Br82**

Date:

May 28, 2013



Note: Br means Bridge, W =Total Width, W_i =Net Width, H =Total Height, H_i =Net Height, L =Total Length, B =River bed Width, t =Girder thickness, N/A means data not available. Lake means Tonle Sap Lake