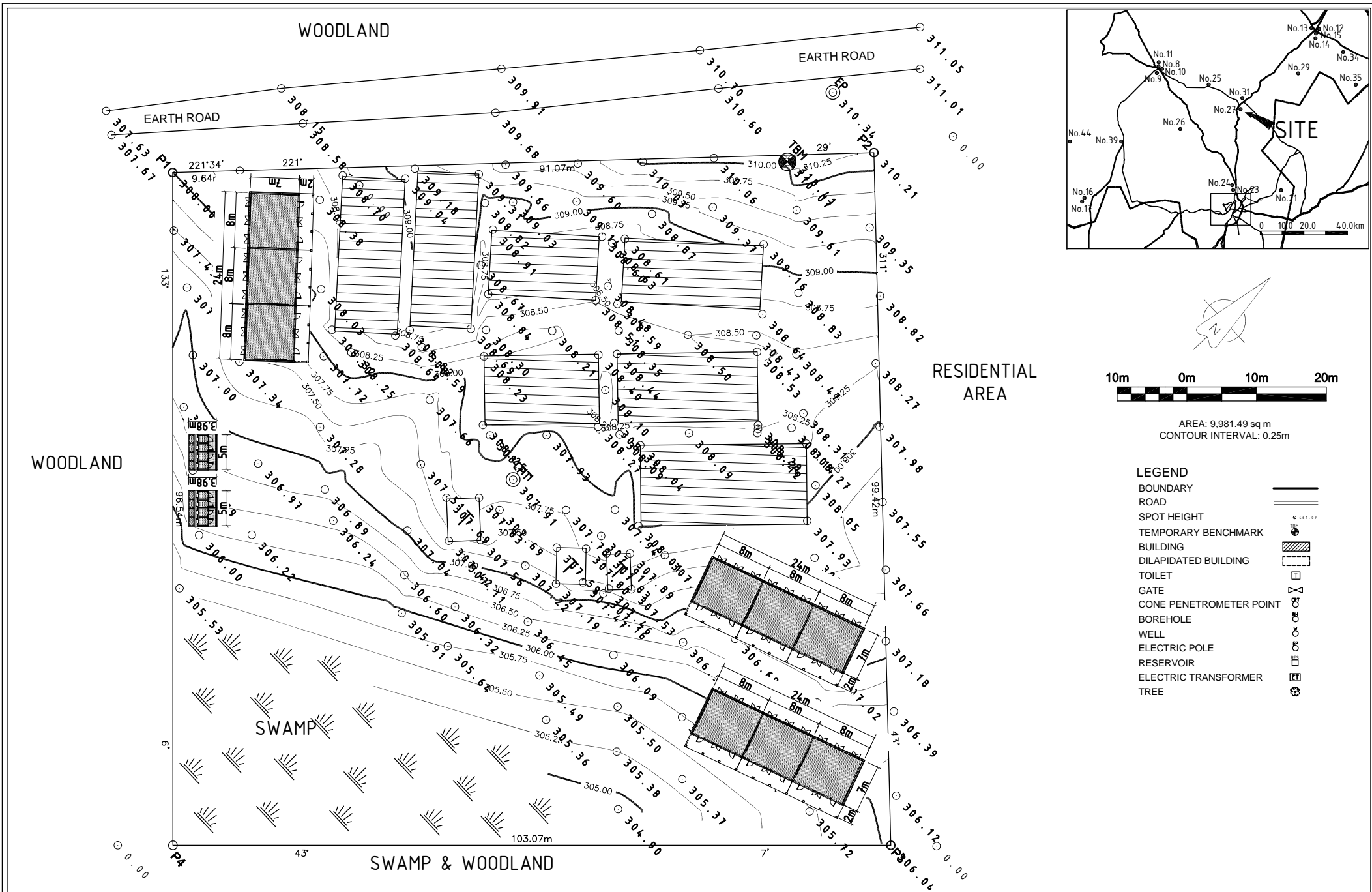


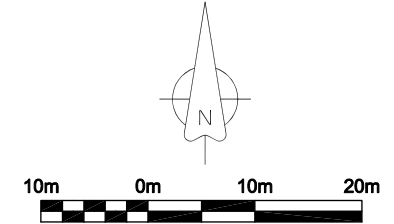
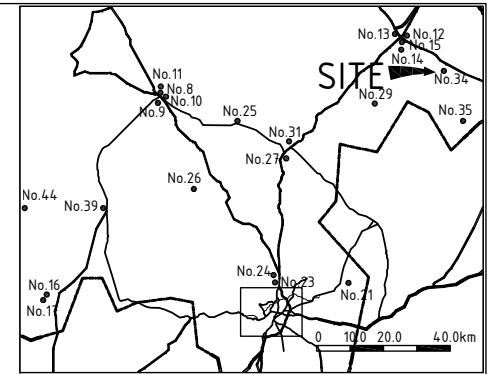
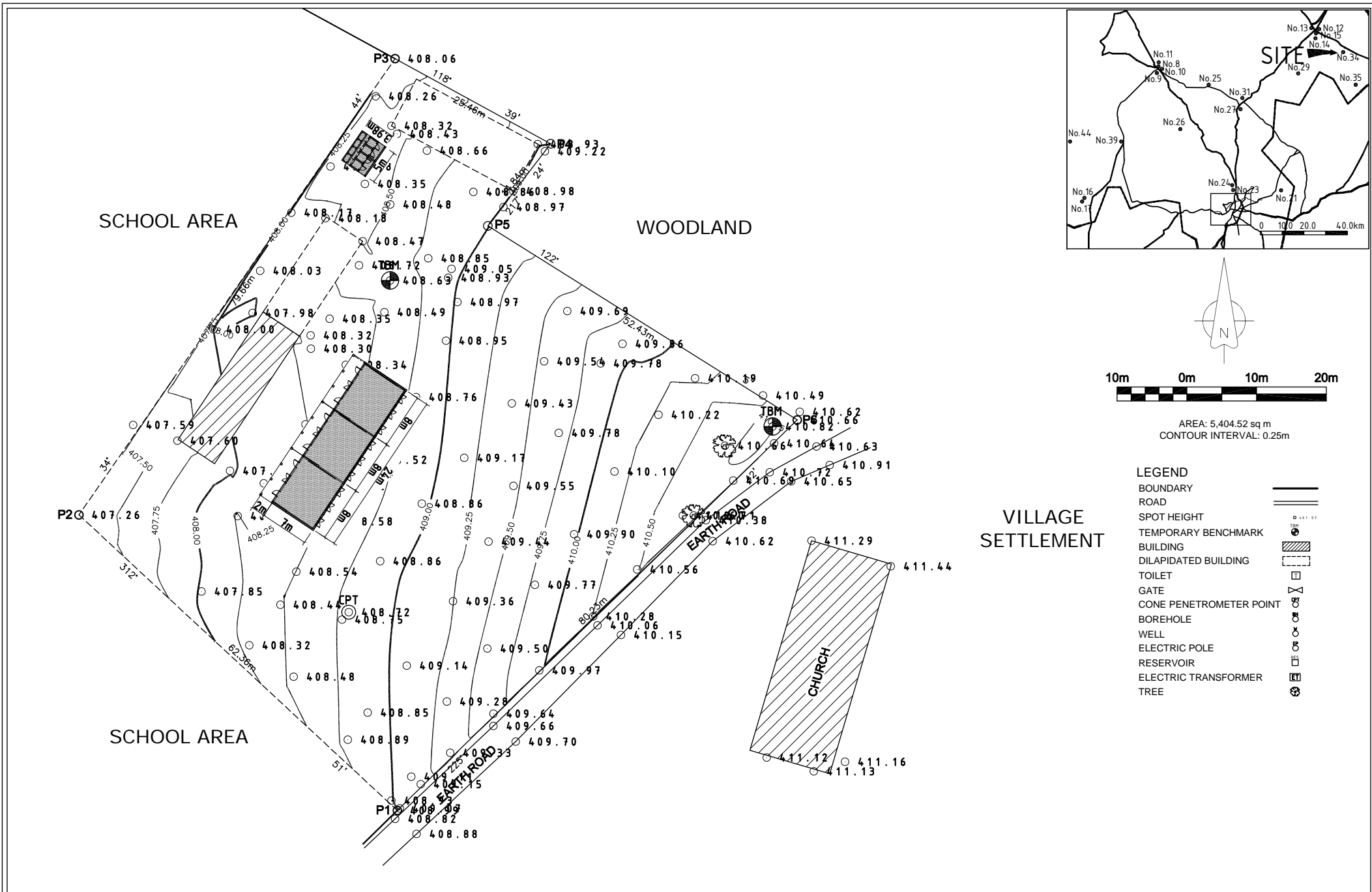
PROJECT The Project for Construction of Classrooms for Primary Schools in OYO State in The Federal Republic of Nigeria	CLIENT	CONSULTANTS yec YACHIYO ENGINEERING CO., LTD. TOKYO, JAPAN	TITLE LOCATION PLAN OF P26-N31 L.A. PRIMARY SCHOOL SCHOOL III OKEOLOLA, ATIBA LGEEA OYO STATE				DRG NO: A 02 P26-N31
			APPROVED BY: N. MINAMI	CHECKED BY: T. KURUMADA	DESIGNED BY: K. OHARA	DATE: AUG.2014	SCALE: 1:500



AREA: 9,981.49 sq m
 CONTOUR INTERVAL: 0.25m

- LEGEND**
- BOUNDARY ———
 - ROAD = = = =
 - SPOT HEIGHT ○ 441.07
 - TEMPORARY BENCHMARK TBM
 - BUILDING [Hatched Box]
 - DILAPIDATED BUILDING [Dashed Box]
 - TOILET [Toilet Symbol]
 - GATE [Gate Symbol]
 - CONE PENETROMETER POINT CP
 - BOREHOLE BH
 - WELL W
 - ELECTRIC POLE EP
 - RESERVOIR R
 - ELECTRIC TRANSFORMER [Transformer Symbol]
 - TREE [Tree Symbol]

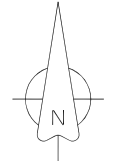
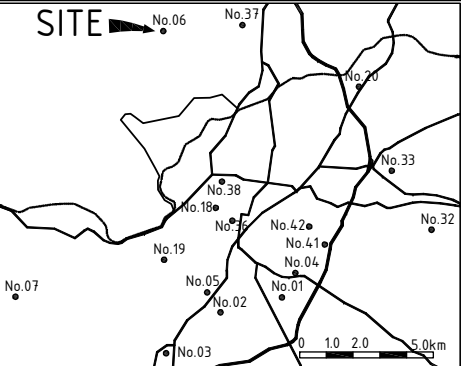
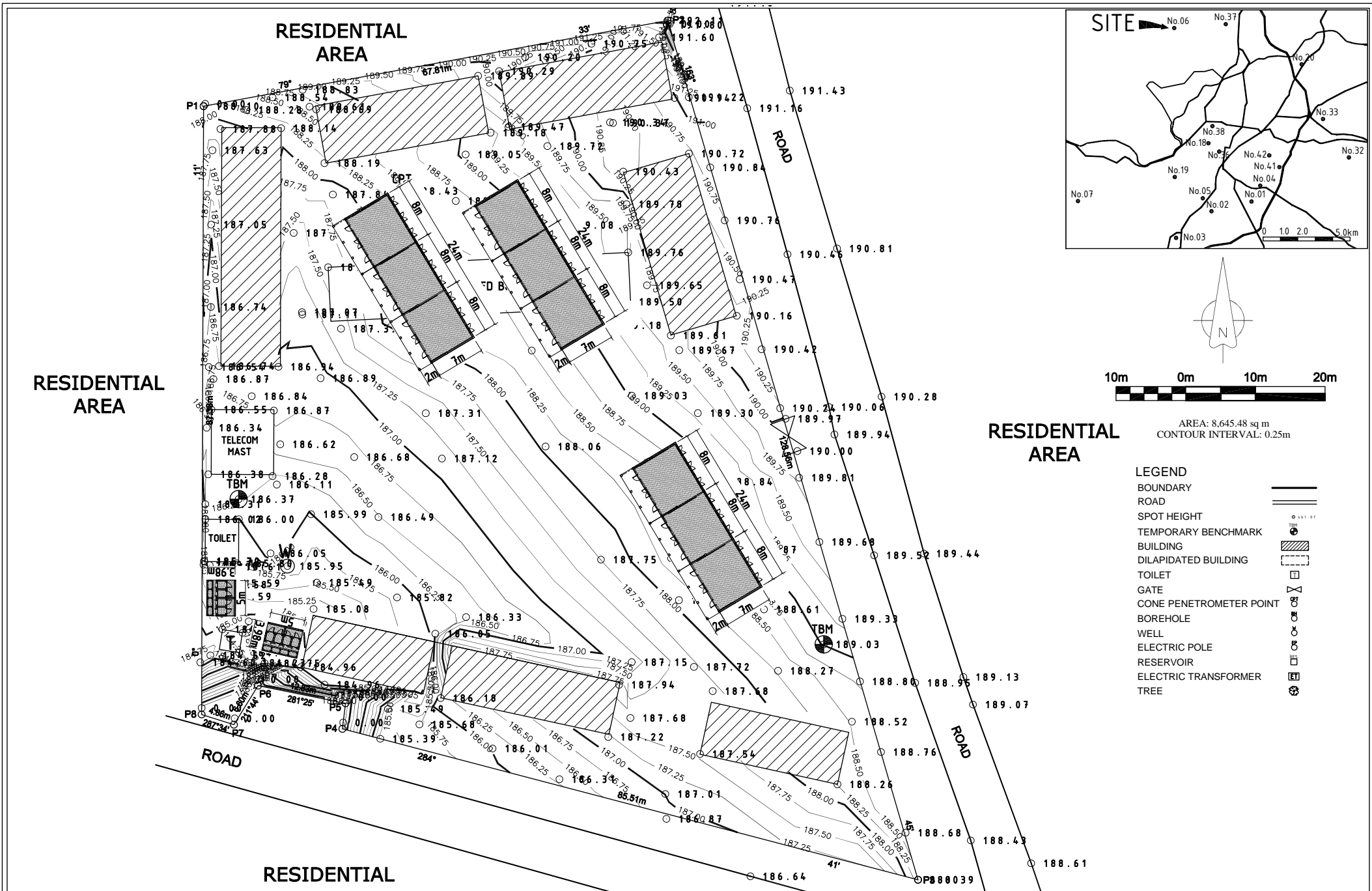
PROJECT The Project for Construction of Classrooms for Primary Schools in OYO State in The Federal Republic of Nigeria	CLIENT	CONSULTANTS yec YACHIYO ENGINEERING CO., LTD. TOKYO, JAPAN	TITLE LOCATION PLAN OF P27-N27 ST. MICHAEL ANGLICAN PRIMARY SCHOOL ARAROMI, OYO EAST LGEA OYO STATE				DRG NO: A 02 P27-N27
			APPROVED BY: N. MINAMI	CHECKED BY: T. KURUMADA	DESIGNED BY: K. OHARA	DATE: AUG.2014	SCALE: 1:500



AREA: 5,404.52 sq m
 CONTOUR INTERVAL: 0.25m

- LEGEND**
- BOUNDARY
 - ROAD
 - SPOT HEIGHT
 - TEMPORARY BENCHMARK
 - BUILDING
 - DILAPIDATED BUILDING
 - TOILET
 - GATE
 - CONE PENETROMETER POINT
 - BOREHOLE
 - WELL
 - ELECTRIC POLE
 - RESERVOIR
 - ELECTRIC TRANSFORMER
 - TREE

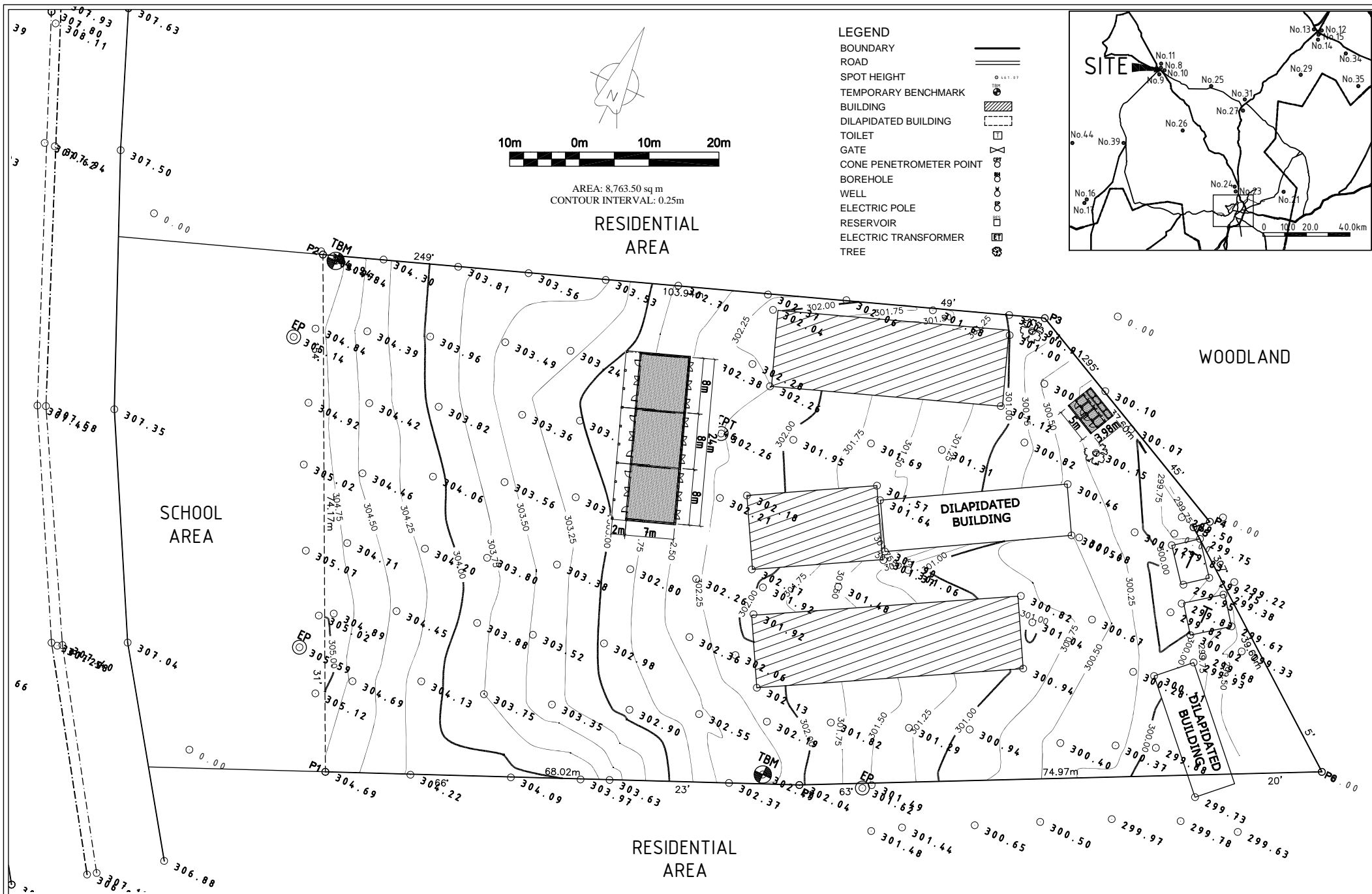
PROJECT The Project for Construction of Classrooms for Primary Schools in OYO State in The Federal Republic of Nigeria	CLIENT	CONSULTANTS yec YACHIYO ENGINEERING CO., LTD. TOKYO, JAPAN	TITLE LOCATION PLAN OF P30-N34 COMMUNITY BASIC SCHOOL KEEWO, SURULERE LGEA OYO STATE				DRG NO: A 02 P30-N34
			APPROVED BY: N. MINAMI	CHECKED BY: T. KURUMADA	DESIGNED BY: K. OHARA	DATE: AUG.2014	SCALE: 1:500



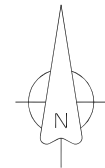
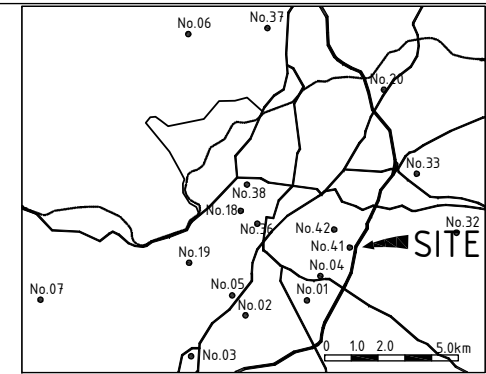
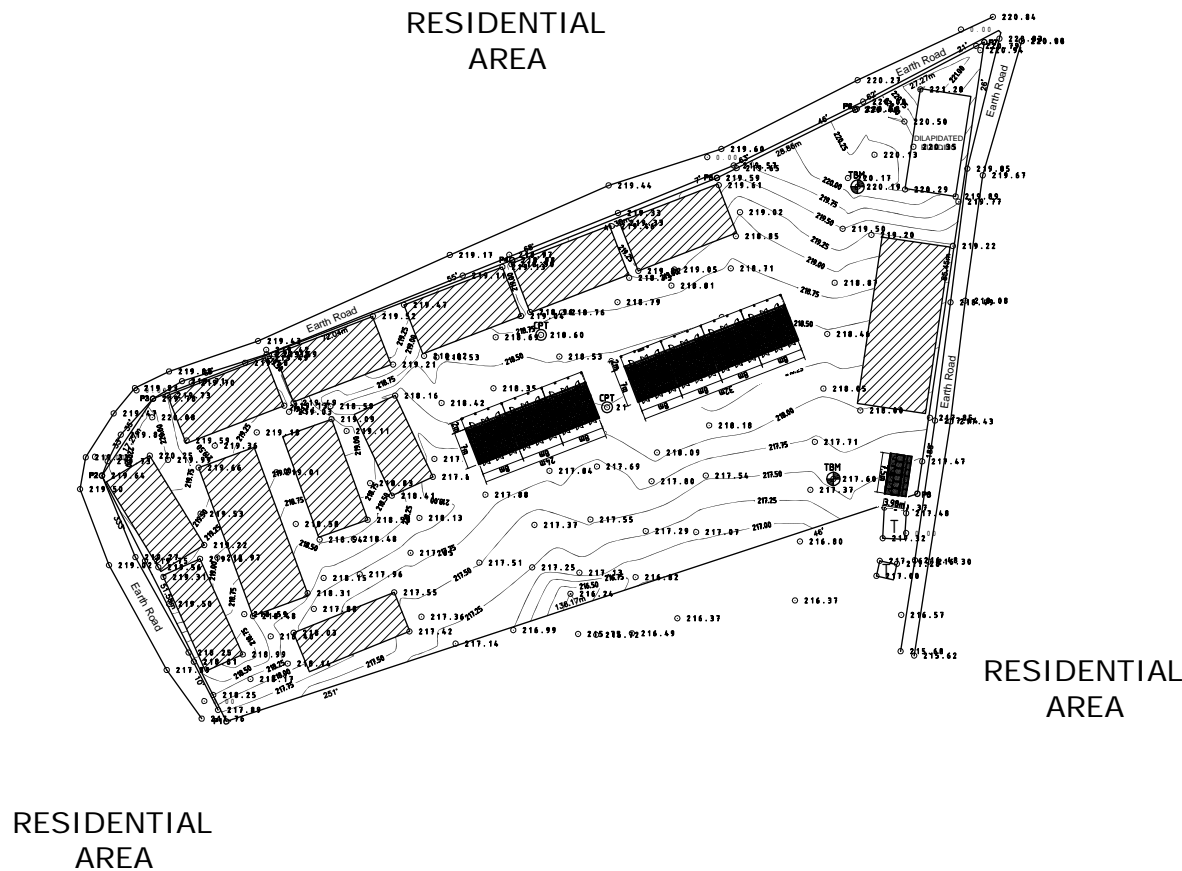
AREA: 8,645.48 sq m
CONTOUR INTERVAL: 0.25m

- LEGEND**
- BOUNDARY
 - ROAD
 - SPOT HEIGHT
 - TEMPORARY BENCHMARK
 - BUILDING
 - DILAPIDATED BUILDING
 - TOILET
 - GATE
 - CONE PENETROMETER POINT
 - BOREHOLE
 - WELL
 - ELECTRIC POLE
 - RESERVOIR
 - ELECTRIC TRANSFORMER
 - TREE

PROJECT The Project for Construction of Classrooms for Primary Schools in OYO State in The Federal Republic of Nigeria	CLIENT	CONSULTANTS yec YACHIYO ENGINEERING CO., LTD. TOKYO, JAPAN	TITLE LOCATION PLAN OF P31-N6 ST. PETER'S PRIMARY SCHOOL APETE, IDO LG EA OYO STATE				DRG NO: A 02 P31-N6
			APPROVED BY: N. MINAMI	CHECKED BY: T. KURUMADA	DESIGNED BY: K. OHARA	DATE: AUG.2014	SCALE: 1:500



PROJECT The Project for Construction of Classrooms for Primary Schools in OYO State in The Federal Republic of Nigeria	CLIENT	CONSULTANTS yec YACHIYO ENGINEERING CO., LTD. TOKYO, JAPAN	TITLE LOCATION PLAN OF P32-N10 ARMY CHILDREN PRIMARY SCHOOL ISEYIN LGEA OYO STATE				DRG NO: A 02 P32-N10
			APPROVED BY: N. MINAMI	CHECKED BY: T. KURUMADA	DESIGNED BY: K. OHARA	DATE: AUG.2014	SCALE: 1:500



AREA = 10,407.02 sq m
CONTOUR INTERVAL: 0.25m

LEGEND	
BOUNDARY	———
ROAD	====
SPOT HEIGHT	○ 441.57
TEMPORARY BENCHMARK	⊕ TBM
BUILDING	▨
DILAPIDATED BUILDING	- - - -
TOILET	□
GATE	⊗
CONE PENETROMETER POINT	⊕
BOREHOLE	⊙
WELL	⊕
ELECTRIC POLE	⊕
RESERVOIR	⊕
ELECTRIC TRANSFORMER	⊕
TREE	⊕

PROJECT The Project for Construction of Classrooms for Primary Schools in OYO State in The Federal Republic of Nigeria	CLIENT	CONSULTANTS yec YACHIYO ENGINEERING CO., LTD. TOKYO, JAPAN	TITLE LOCATION PLAN OF P34-N41 ISLAMIC MISSION PRIMARY SCHOOL 1 & 2 AGUGU, IBADAN NORTH EAST LGEA OYO STATE				DRG NO : A 02 P34-N41
			APPROVED BY : N. MINAMI	CHECKED BY : T. KURUMADA	DESIGNED BY : K. OHARA	DATE : AUG.2014	SCALE : 1:1000





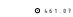


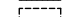
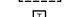
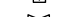
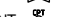






AREA: 5256.16 sq m
 CONTOUR INTERVAL: 0.25m

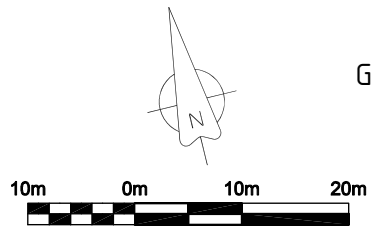
LEGEND

- BOUNDARY ———
- ROAD = = =
- SPOT HEIGHT ○ 227.65
- TEMPORARY BENCHMARK ⊙
- BUILDING ▨
- DILAPIDATED BUILDING - - -
- TOILET ⊠
- GATE ⊞
- CONE PENETROMETER POINT ⊕
- BOREHOLE ⊙
- WELL ⊕
- ELECTRIC POLE ⊕
- RESERVOIR ⊕
- ELECTRIC TRANSFORMER ⊕
- TREE ⊕

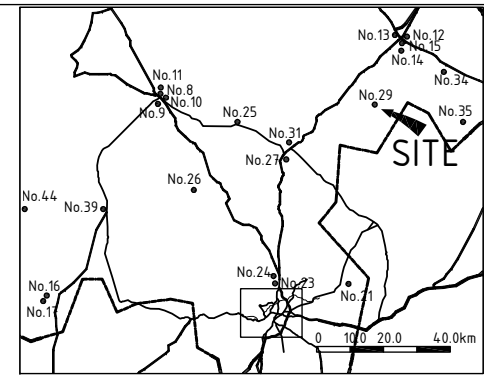
PROJECT The Project for Construction of Classrooms for Primary Schools in OYO State in The Federal Republic of Nigeria	CLIENT	CONSULTANTS YACHIYO ENGINEERING CO., LTD. TOKYO, JAPAN	TITLE LOCATION PLAN OF P35-N33 C.P.S. I AYEPE, EGBEDA LGEA OYO STATE		DRG NO : A 02 P35-N33
			APPROVED BY : N. MINAMI	CHECKED BY : T. KURUMADA	DESIGNED BY : K. OHARA

LEGEND

- BOUNDARY 
- ROAD 
- SPOT HEIGHT 
- TEMPORARY BENCHMARK 
- BUILDING 
- DILAPIDATED BUILDING 
- TOILET 
- GATE 
- CONE PENETROMETER POINT 
- BOREHOLE 
- WELL 
- ELECTRIC POLE 
- RESERVOIR 
- ELECTRIC TRANSFORMER 
- TREE 



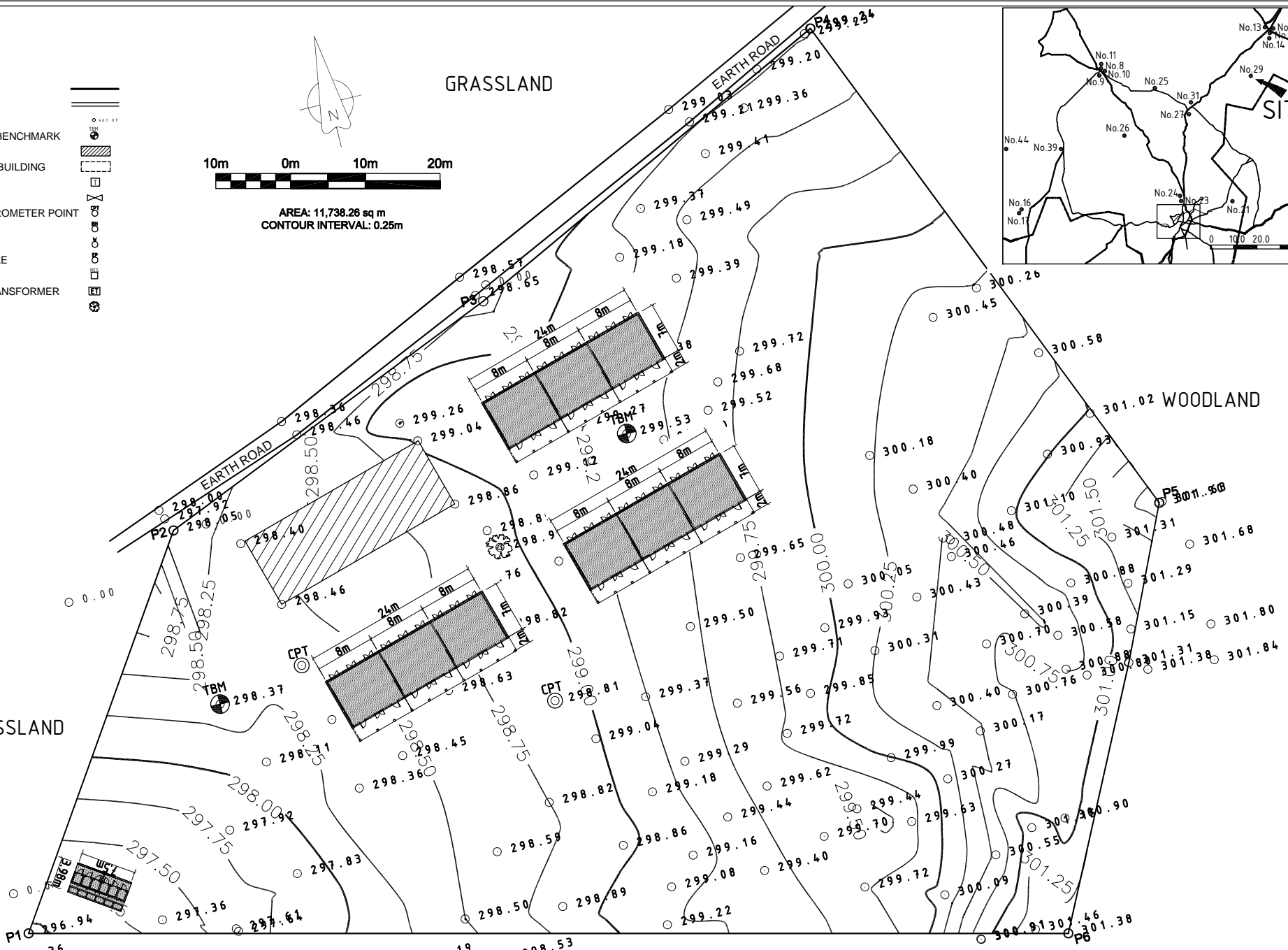
AREA: 11,738.26 sq m
CONTOUR INTERVAL: 0.25m



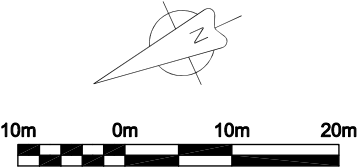
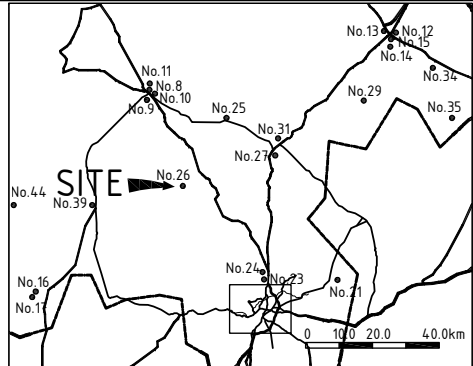
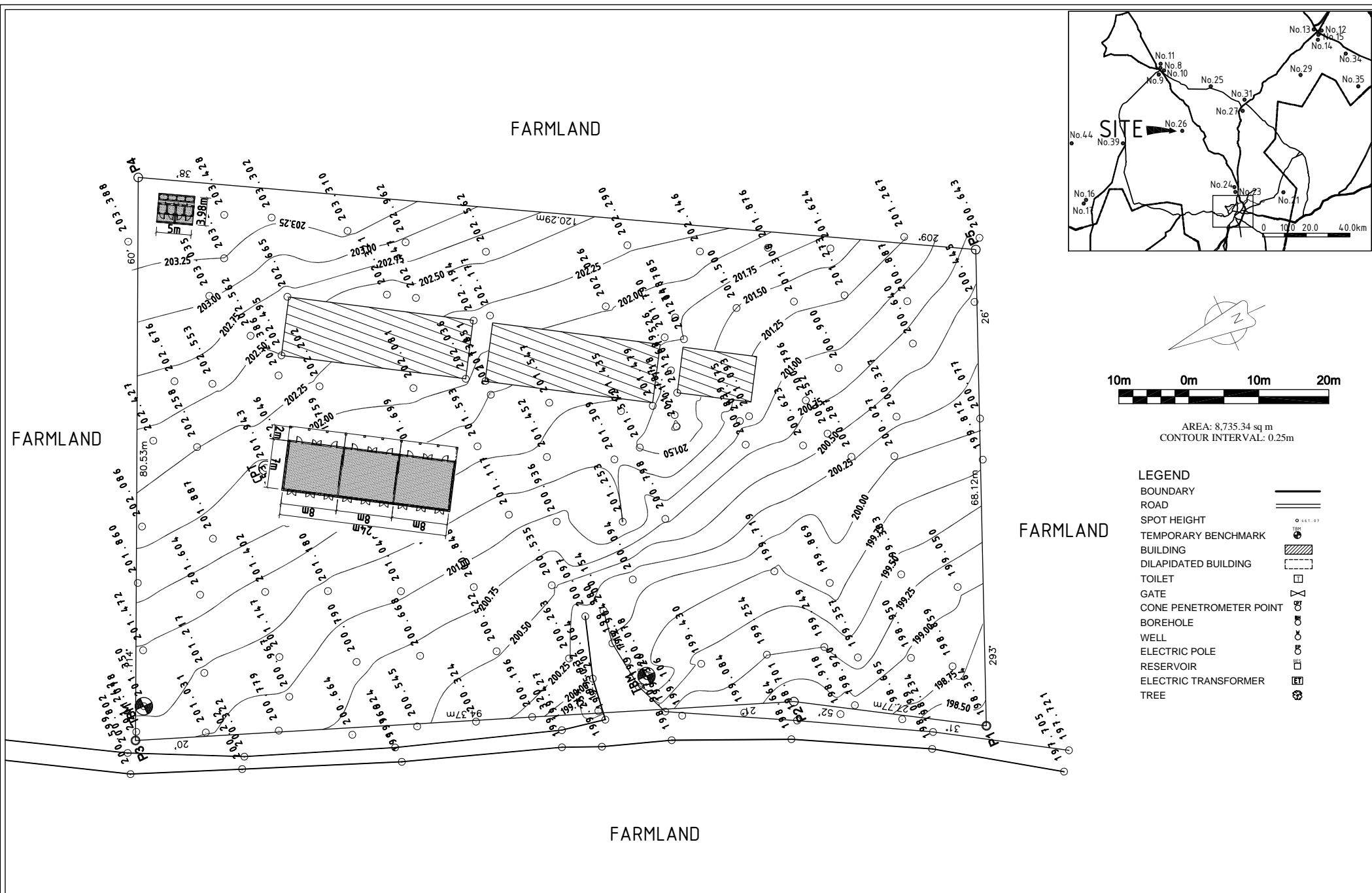
GRASSLAND

GRASSLAND

WOODLAND



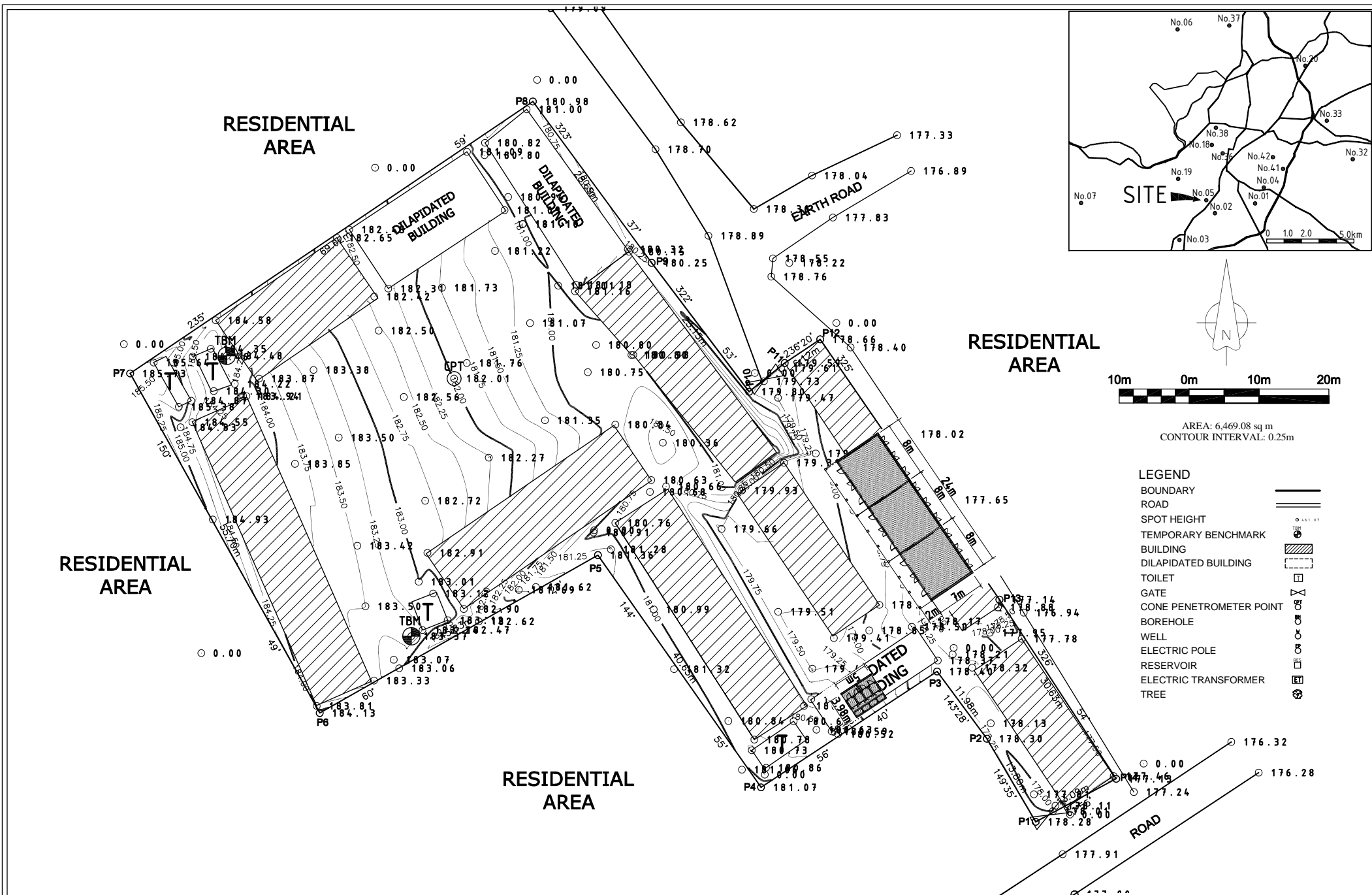
PROJECT The Project for Construction of Classrooms for Primary Schools in OYO State in The Federal Republic of Nigeria	CLIENT	CONSULTANTS  YACHIYO ENGINEERING CO., LTD. TOKYO, JAPAN	TITLE LOCATION PLAN OF P36-N29 BAPTIST PRIMARY SCHOOL II OTAMOKUN, OGO OLUWA LGEEA OYO STATE				DRG NO : A 02 P36-N29
			APPROVED BY : N. MINAMI	CHECKED BY : T. KURUMADA	DESIGNED BY : K. OHARA	DATE : AUG.2014	



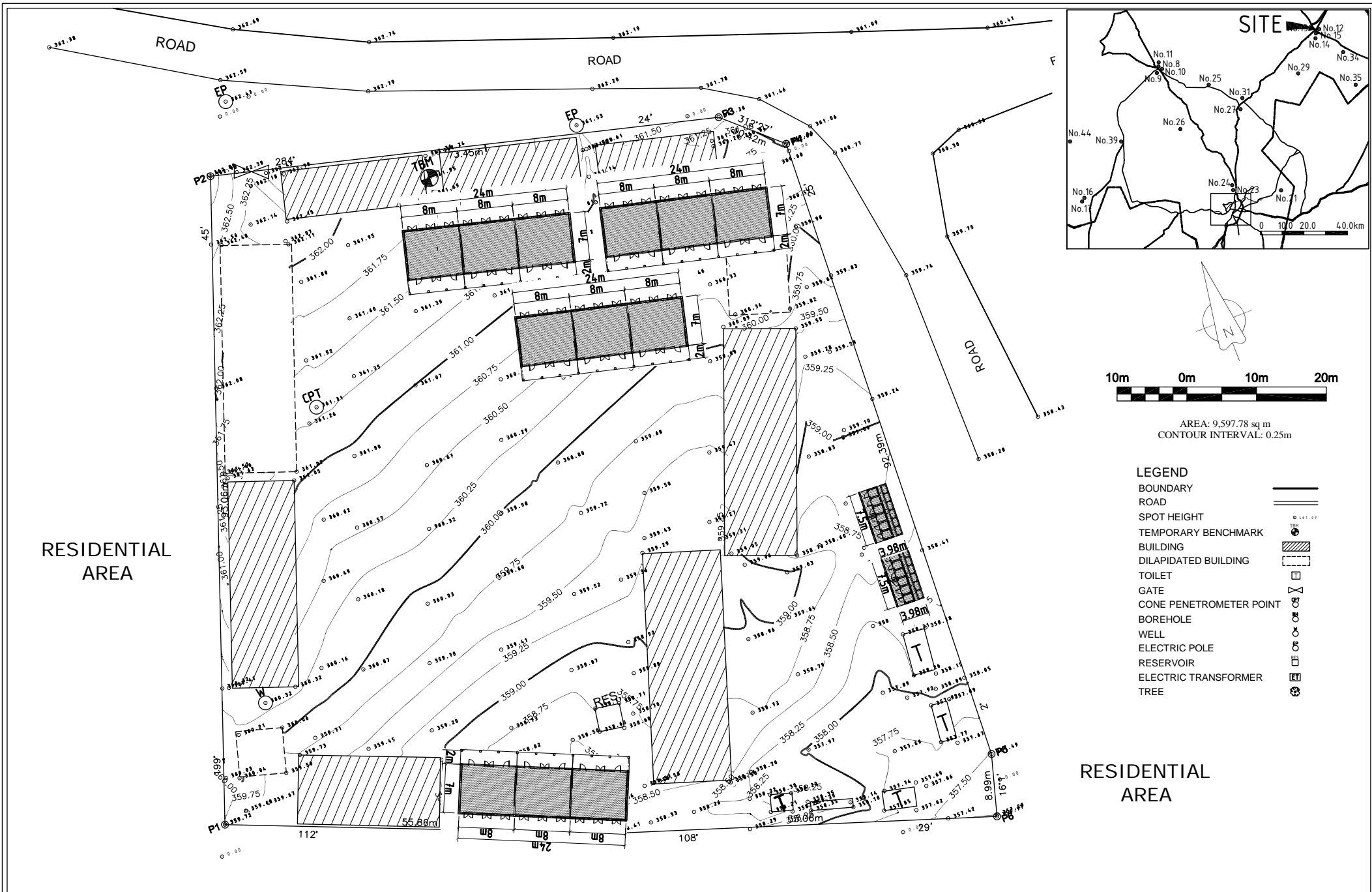
AREA: 8,735.34 sq m
 CONTOUR INTERVAL: 0.25m

- LEGEND**
- BOUNDARY
 - ROAD
 - SPOT HEIGHT
 - TEMPORARY BENCHMARK
 - BUILDING
 - DILAPIDATED BUILDING
 - TOILET
 - GATE
 - CONE PENETROMETER POINT
 - BOREHOLE
 - WELL
 - ELECTRIC POLE
 - RESERVOIR
 - ELECTRIC TRANSFORMER
 - TREE

PROJECT The Project for Construction of Classrooms for Primary Schools in OYO State in The Federal Republic of Nigeria	CLIENT	CONSULTANTS yec YACHIYO ENGINEERING CO., LTD. TOKYO, JAPAN	TITLE LOCATION PLAN OF P37-N26 COMMUNITY PRIMARY SCHOOL OGUNKEYE, OYO WEST LGEA OYO STATE				DRG NO: A 02 P37-N26
			APPROVED BY: N. MINAMI	CHECKED BY: T. KURUMADA	DESIGNED BY: K. OHARA	DATE: AUG.2014	SCALE: 1:500



PROJECT The Project for Construction of Classrooms for Primary Schools in OYO State in The Federal Republic of Nigeria	CLIENT	CONSULTANTS yec YACHIYO ENGINEERING CO., LTD. TOKYO, JAPAN	TITLE LOCATION PLAN OF P40-N5 I.M.G. PRIMARY SCHOOL LAGOS BYE PASS, IBADAN SOUTH WEST LGEA OYO STATE				DRG NO: A 02 P40-N5
			APPROVED BY: N. MINAMI	CHECKED BY: T. KURUMADA	DESIGNED BY: K. OHARA	DATE: AUG.2014	SCALE: 1:500



RESIDENTIAL AREA

RESIDENTIAL AREA



AREA: 9,597.78 sq m
CONTOUR INTERVAL: 0.25m

LEGEND

- BOUNDARY
- ROAD
- SPOT HEIGHT
- TEMPORARY BENCHMARK
- BUILDING
- DILAPIDATED BUILDING
- TOILET
- GATE
- CONE PENETROMETER POINT
- BOREHOLE
- WELL
- ELECTRIC POLE
- RESERVOIR
- ELECTRIC TRANSFORMER
- TREE

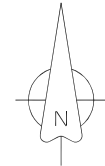
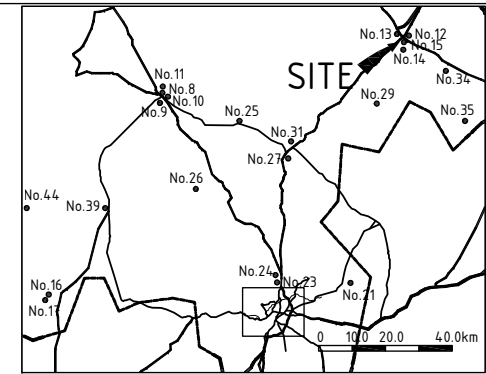
PROJECT The Project for Construction of Classrooms for Primary Schools in OYO State in The Federal Republic of Nigeria	CLIENT	CONSULTANTS YEC YACHIYO ENGINEERING CO., LTD. TOKYO, JAPAN	TITLE LOCATION PLAN OF P41-N12 ST. DAVID'S PRIMARY SCHOOL AGBOYIN, OGBOMOSO NORTH LGEA OYO STATE				DRG NO: A 02 P41-N12
			APPROVED BY: N. MINAMI	CHECKED BY: T. KURUMADA	DESIGNED BY: K. OHARA	DATE: AUG.2014	SCALE: 1:500

RESIDENTIAL
AREA

RESIDENTIAL
AREA






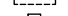









RESIDENTIAL
AREA

RESIDENTIAL
AREA

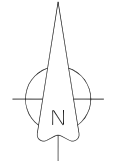
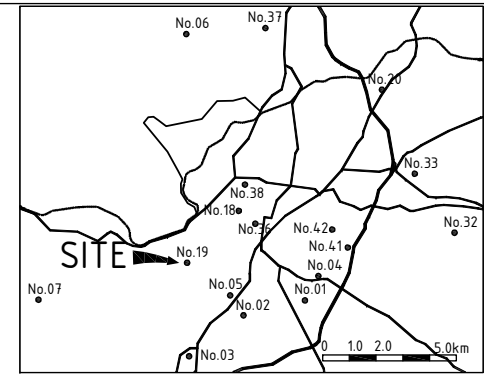
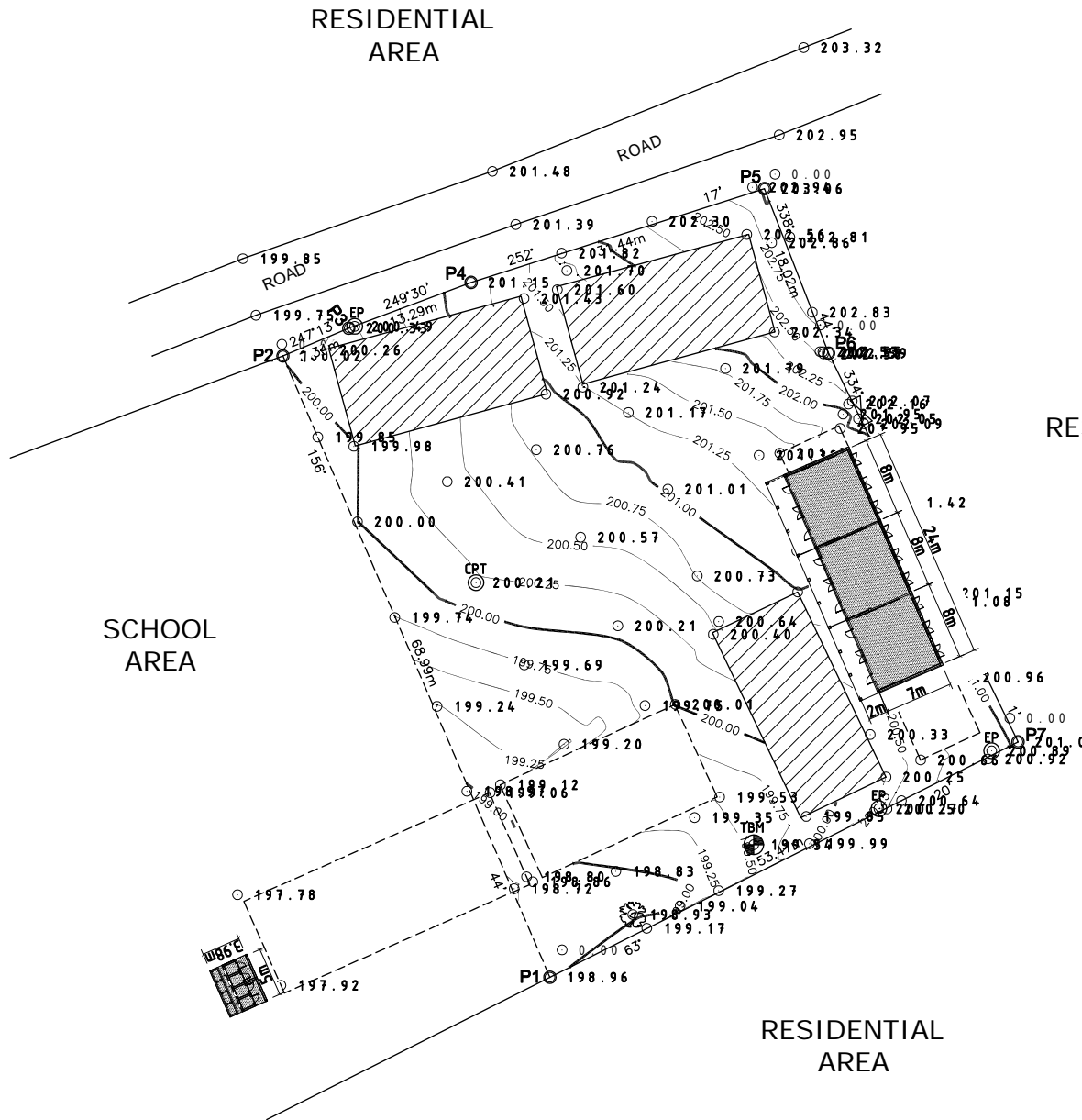


AREA: 4155.87 sq m
CONTOUR INTERVAL: 0.25m

LEGEND

- BOUNDARY 
- ROAD 
- SPOT HEIGHT 
- TEMPORARY BENCHMARK 
- BUILDING 
- DILAPIDATED BUILDING 
- TOILET 
- GATE 
- CONE PENETROMETER POINT 
- BOREHOLE 
- WELL 
- ELECTRIC POLE 
- RESERVOIR 
- ELECTRIC TRANSFORMER 
- TREE 

<p>PROJECT</p> <p>The Project for Construction of Classrooms for Primary Schools in OYO State in The Federal Republic of Nigeria</p>	<p>CLIENT</p>	<p>CONSULTANTS</p> <p>yec YACHIYO ENGINEERING CO., LTD. TOKYO, JAPAN</p>	<p>TITLE LOCATION PLAN OF P42-N15 MOLETE D.C. PRIMARY SCHOOL III OGBOMOSO SOUTH LGEA OYO STATE</p> <p>APPROVED BY : N. MINAMI</p> <p>CHECKED BY : T. KURUMADA</p> <p>DESIGNED BY : K. OHARA</p> <p>DATE : AUG.2014</p>	<p>DRG NO : A 02 P42-N15</p> <p>SCALE : 1:500</p>
--	---------------	---	--	---



AREA: 3,438.60 sq m
 CONTOUR INTERVAL: 0.25m

LEGEND

BOUNDARY	———
ROAD	====
SPOT HEIGHT	○ 441.07
TEMPORARY BENCHMARK	⊙
BUILDING	▨
DILAPIDATED BUILDING	⋯
TOILET	⊠
GATE	⊗
CONE PENETROMETER POINT	⊙
BOREHOLE	⊕
WELL	⊕
ELECTRIC POLE	⊕
RESERVOIR	⊕
ELECTRIC TRANSFORMER	⊕
TREE	⊕

PROJECT The Project for Construction of Classrooms for Primary Schools in OYO State in The Federal Republic of Nigeria	CLIENT	CONSULTANTS yec YACHIYO ENGINEERING CO., LTD. TOKYO, JAPAN	TITLE LOCATION PLAN OF P44-N19 I.M.G. PRIMARY SCHOOL JOYCEB, OKE ADO, IBADAN SOUTH WEST LGEA OYO STATE				DRG NO : A 02 P44-N19
			APPROVED BY : N. MINAMI	CHECKED BY : T. KURUMADA	DESIGNED BY : K. OHARA	DATE : AUG.2014	SCALE : 1:500