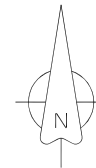
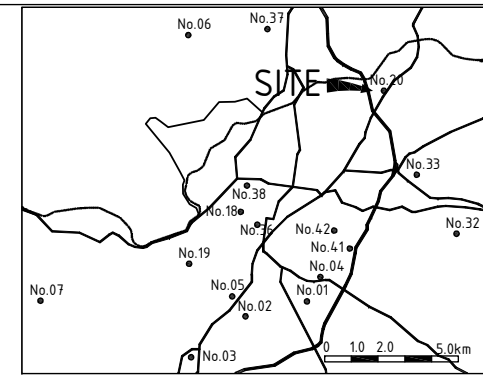


- LEGEND**
- BOUNDARY
 - ROAD
 - SPOT HEIGHT
 - TEMPORARY BENCHMARK
 - BUILDING
 - DILAPIDATED BUILDING
 - TOILET
 - GATE
 - CONE PENETROMETER POINT
 - BOREHOLE
 - WELL
 - ELECTRIC POLE
 - RESERVOIR
 - ELECTRIC TRANSFORMER
 - TREE

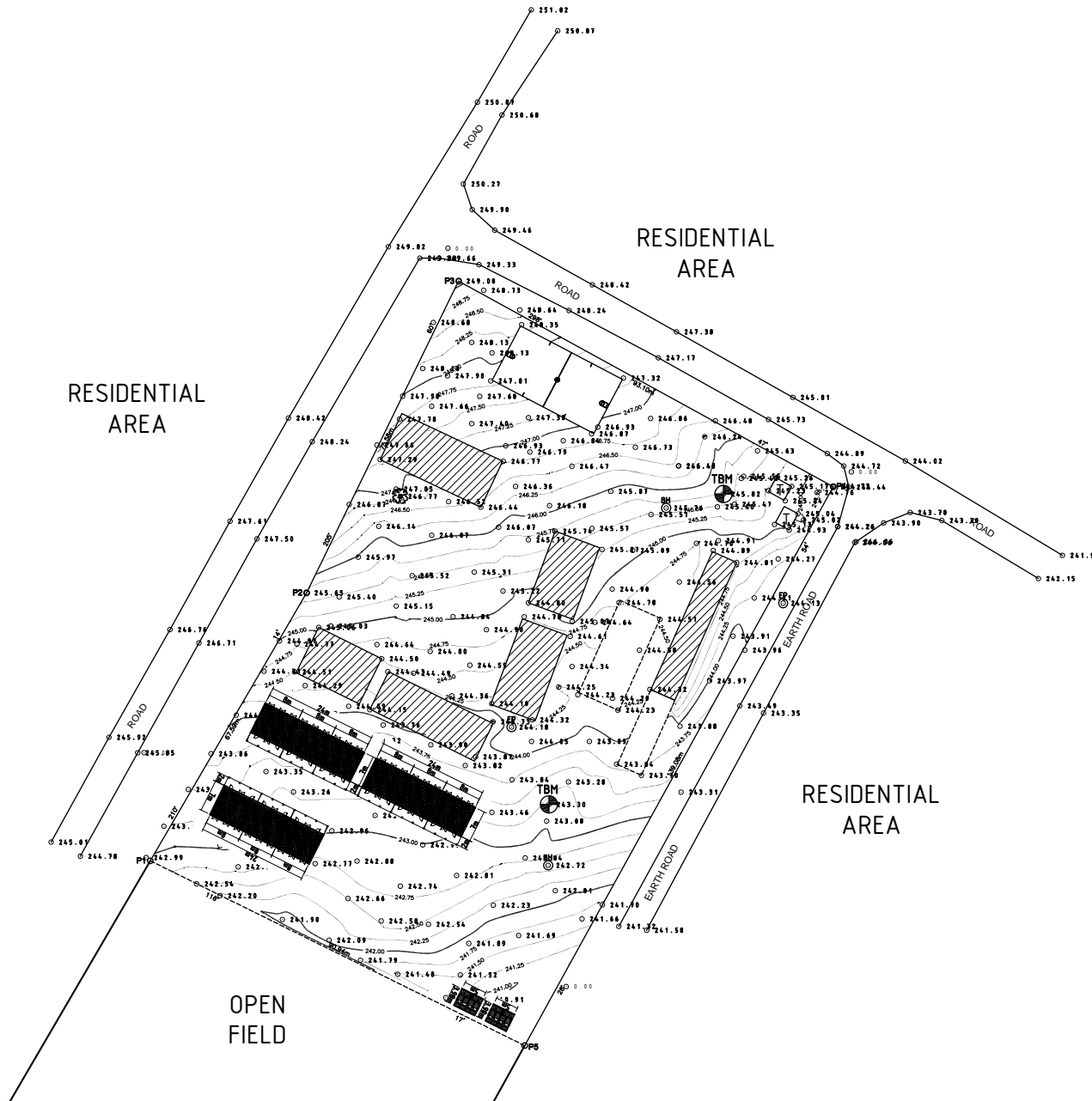
PROJECT The Project for Construction of Classrooms for Primary Schools in OYO State in The Federal Republic of Nigeria	CLIENT	CONSULTANTS yec YACHIYO ENGINEERING CO., LTD. TOKYO, JAPAN	TITLE LOCATION PLAN OF P6-N8 L.A. DEMONSTRATION PRIMARY SCHOOL ISEYIN LGEEA OYO STATE				DRG NO : A 02 P6-N8
			APPROVED BY : N. MINAMI	CHECKED BY : T. KURUMADA	DESIGNED BY : K. OHARA	DATE : AUG.2014	SCALE : 1:1000



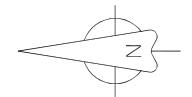
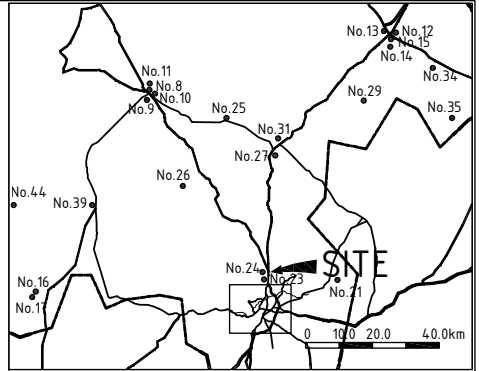
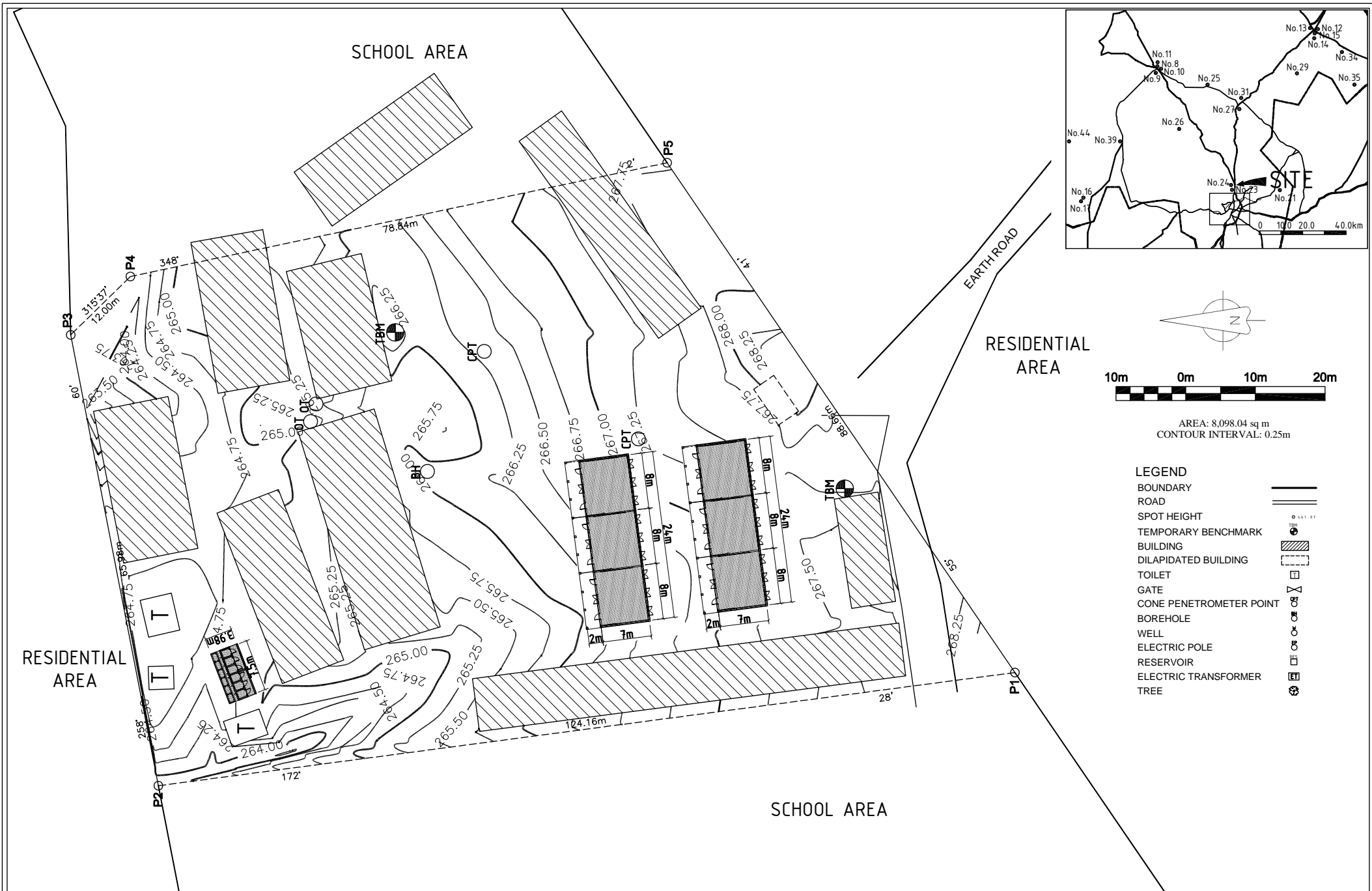
AREA: 12,787.20 sq m
CONTOUR INTERVAL: 0.25m

LEGEND

- BOUNDARY ———
- ROAD = = = = =
- SPOT HEIGHT ○ 241.07
- TEMPORARY BENCHMARK ⊙
- BUILDING ▨
- DILAPIDATED BUILDING - - - - -
- TOILET □
- GATE ⊗
- CONE PENETROMETER POINT ⊕
- BOREHOLE ⊙
- WELL ⊕
- ELECTRIC POLE ⊕
- RESERVOIR ⊕
- ELECTRIC TRANSFORMER ⊕
- TREE ⊕



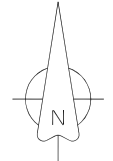
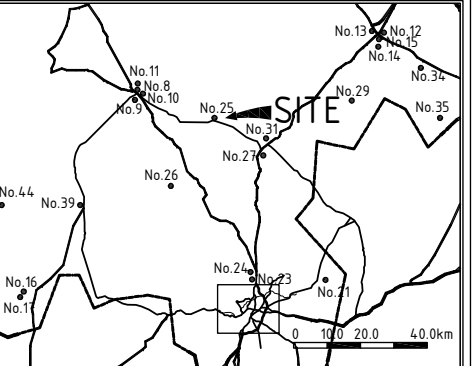
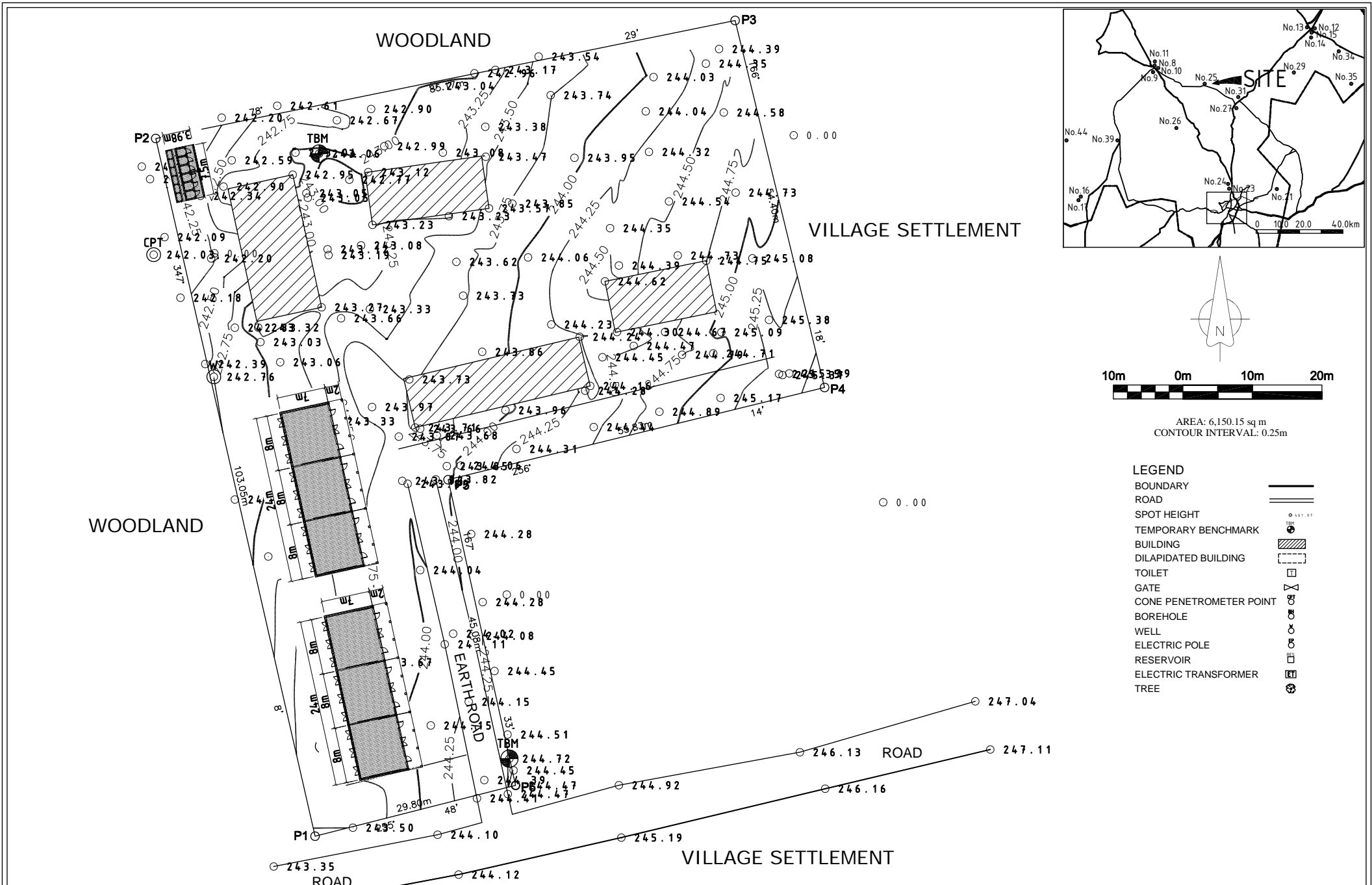
PROJECT The Project for Construction of Classrooms for Primary Schools in OYO State in The Federal Republic of Nigeria	CLIENT	CONSULTANTS 	TITLE LOCATION PLAN OF P7-N20 I.D.C. PRIMARY SCHOOL AKOBO, LAGELU LGEA OYO STATE				DRG NO: A 02 P7-N20
			APPROVED BY: N. MINAMI	CHECKED BY: T. KURUMADA	DESIGNED BY: K. OHARA	DATE: AUG.2014	SCALE: 1:1000



AREA: 8,098.04 sq m
 CONTOUR INTERVAL: 0.25m

- LEGEND**
- BOUNDARY
 - ROAD
 - SPOT HEIGHT
 - TEMPORARY BENCHMARK
 - BUILDING
 - DILAPIDATED BUILDING
 - TOILET
 - GATE
 - CONE PENETROMETER POINT
 - BOREHOLE
 - WELL
 - ELECTRIC POLE
 - RESERVOIR
 - ELECTRIC TRANSFORMER
 - TREE

PROJECT The Project for Construction of Classrooms for Primary Schools in OYO State in The Federal Republic of Nigeria	CLIENT	CONSULTANTS yec YACHIYO ENGINEERING CO., LTD. TOKYO, JAPAN	TITLE LOCATION PLAN OF P8-N24 ISLAMIC MISSION SCHOOL MONIYA, AKINYELE LGEA OYO STATE				DRG NO : A 02 P8-N24
			APPROVED BY : N. MINAMI	CHECKED BY : T. KURUMADA	DESIGNED BY : K. OHARA	DATE : AUG.2014	SCALE : 1:500

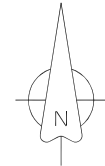
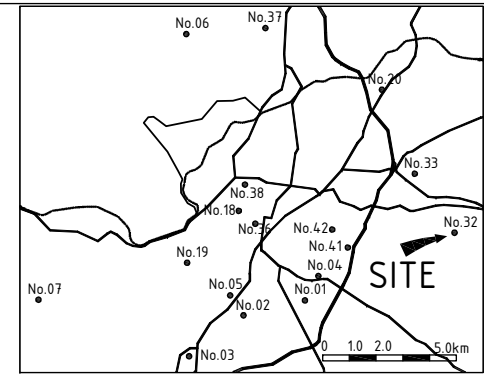
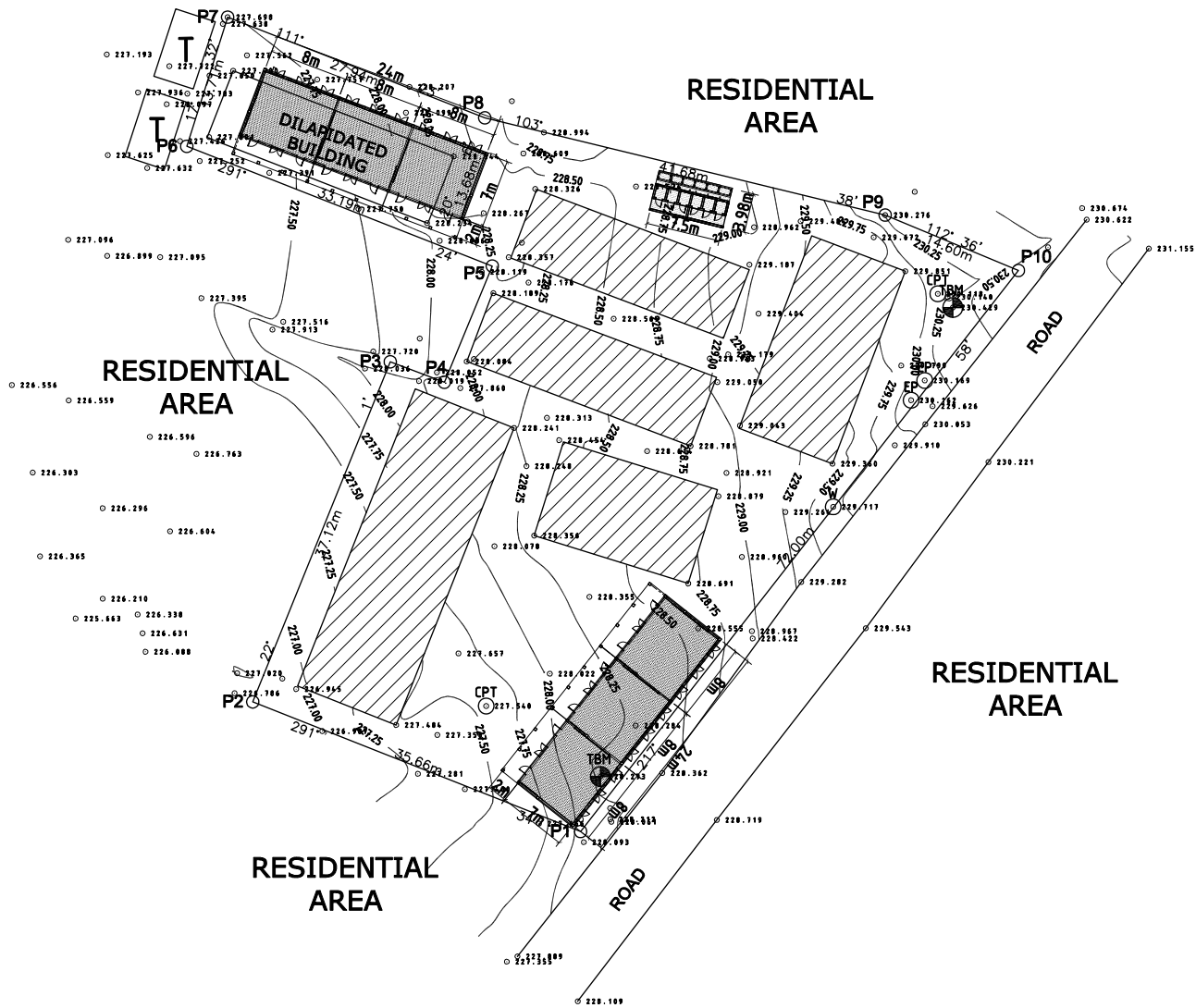


AREA: 6,150.15 sq m
CONTOUR INTERVAL: 0.25m

LEGEND

BOUNDARY	———
ROAD	====
SPOT HEIGHT	○ 244.17
TEMPORARY BENCHMARK	⊙ TBM
BUILDING	▨
DILAPIDATED BUILDING	▤
TOILET	□
GATE	⊗
CONE PENETROMETER POINT	⊙ CPT
BOREHOLE	⊙
WELL	⊙
ELECTRIC POLE	⊙
RESERVOIR	⊙
ELECTRIC TRANSFORMER	⊙
TREE	⊙

PROJECT The Project for Construction of Classrooms for Primary Schools in OYO State in The Federal Republic of Nigeria	CLIENT	CONSULTANTS YEC YACHIYO ENGINEERING CO., LTD. TOKYO, JAPAN	TITLE LOCATION PLAN OF P10-N25 ST. PHILIPS PRIMARY SCHOOL FASOLA, OYO WEST LGEA OYO STATE				DRG NO: A 02 P10-N25
			APPROVED BY: N. MINAMI	CHECKED BY: T. KURUMADA	DESIGNED BY: K. OHARA	DATE: AUG.2014	SCALE: 1:500



AREA: 3347.88 sq m
 CONTOUR INTERVAL: 0.25m

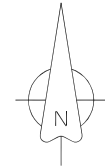
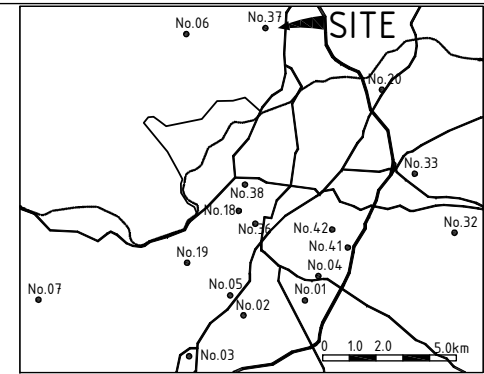
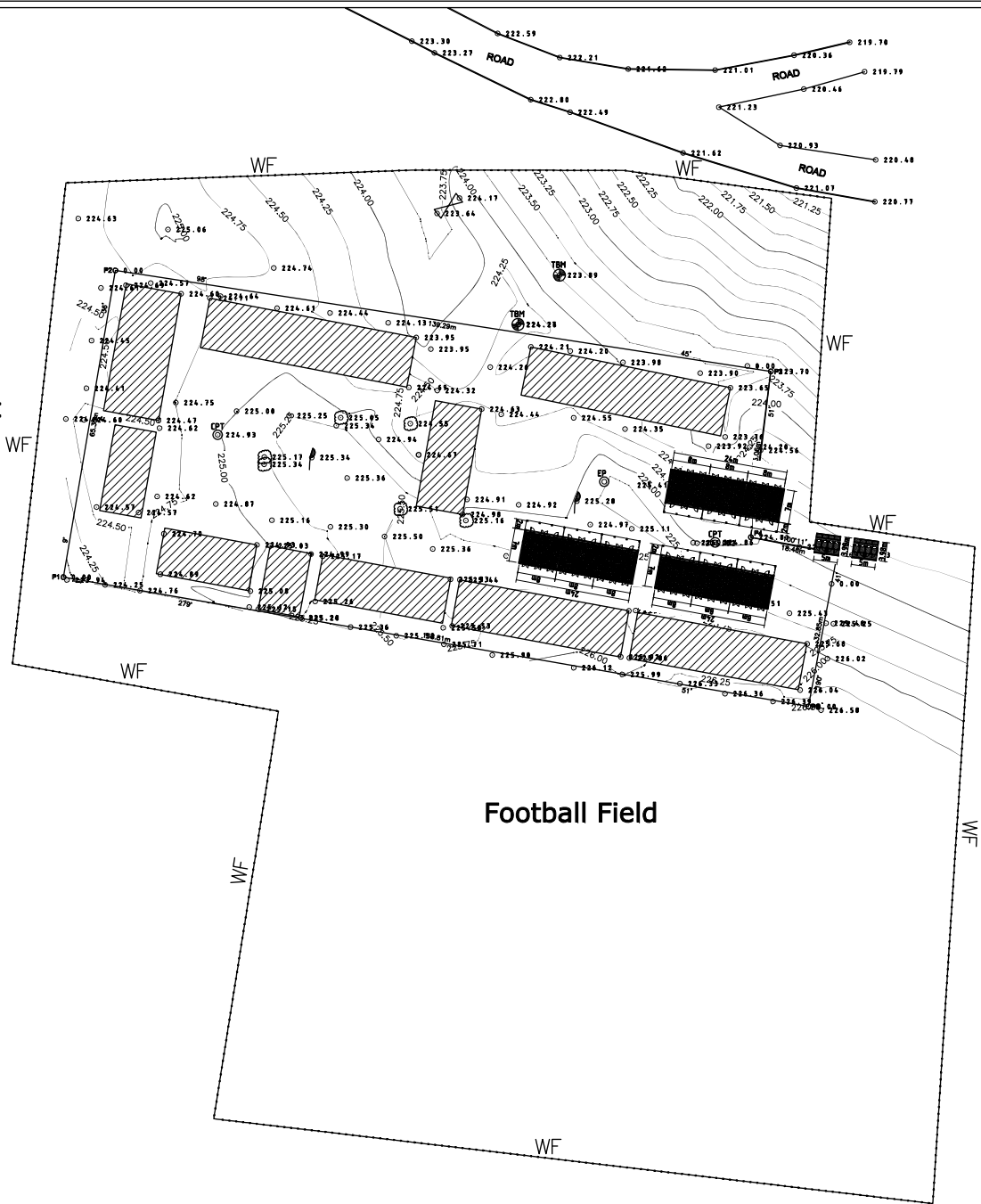
LEGEND

- BOUNDARY
- ROAD
- SPOT HEIGHT
- TEMPORARY BENCHMARK
- BUILDING
- DILAPIDATED BUILDING
- TOILET
- GATE
- CONE PENETROMETER POINT
- BOREHOLE
- WELL
- ELECTRIC POLE
- RESERVOIR
- ELECTRIC TRANSFORMER
- TREE

PROJECT The Project for Construction of Classrooms for Primary Schools in OYO State in The Federal Republic of Nigeria	CLIENT	CONSULTANTS yec YACHIYO ENGINEERING CO., LTD. TOKYO, JAPAN	TITLE LOCATION PLAN OF P11-N32 CHRIST CHURCH SCHOOL I AKINFENWA, EGBEDA LGEA OYO STATE				DRG NO: A 02 P11-N32
			APPROVED BY: N. MINAMI	CHECKED BY: T. KURUMADA	DESIGNED BY: K. OHARA	DATE: AUG.2014	SCALE: 1:500

University Environment

University Environment

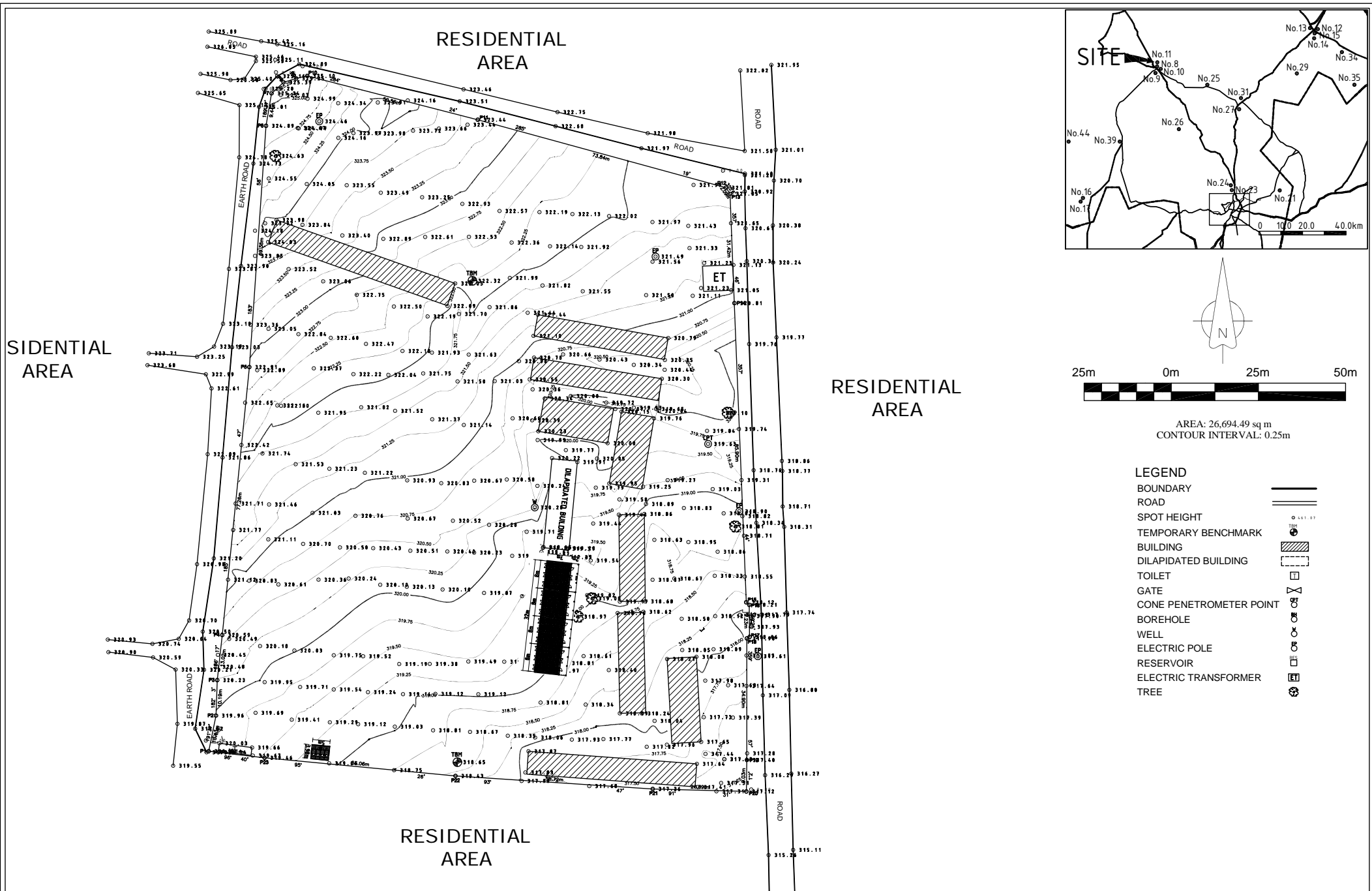


AREA = 9,965.23 sq m
CONTOUR INTERVAL: 0.25m

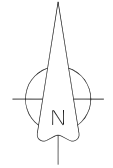
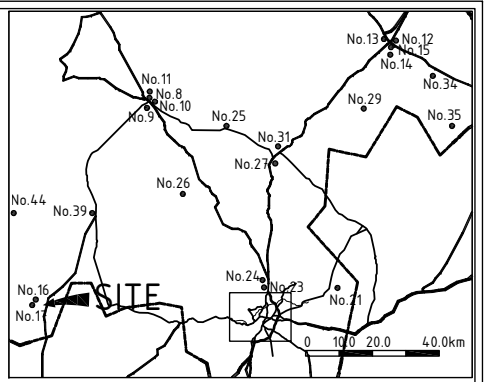
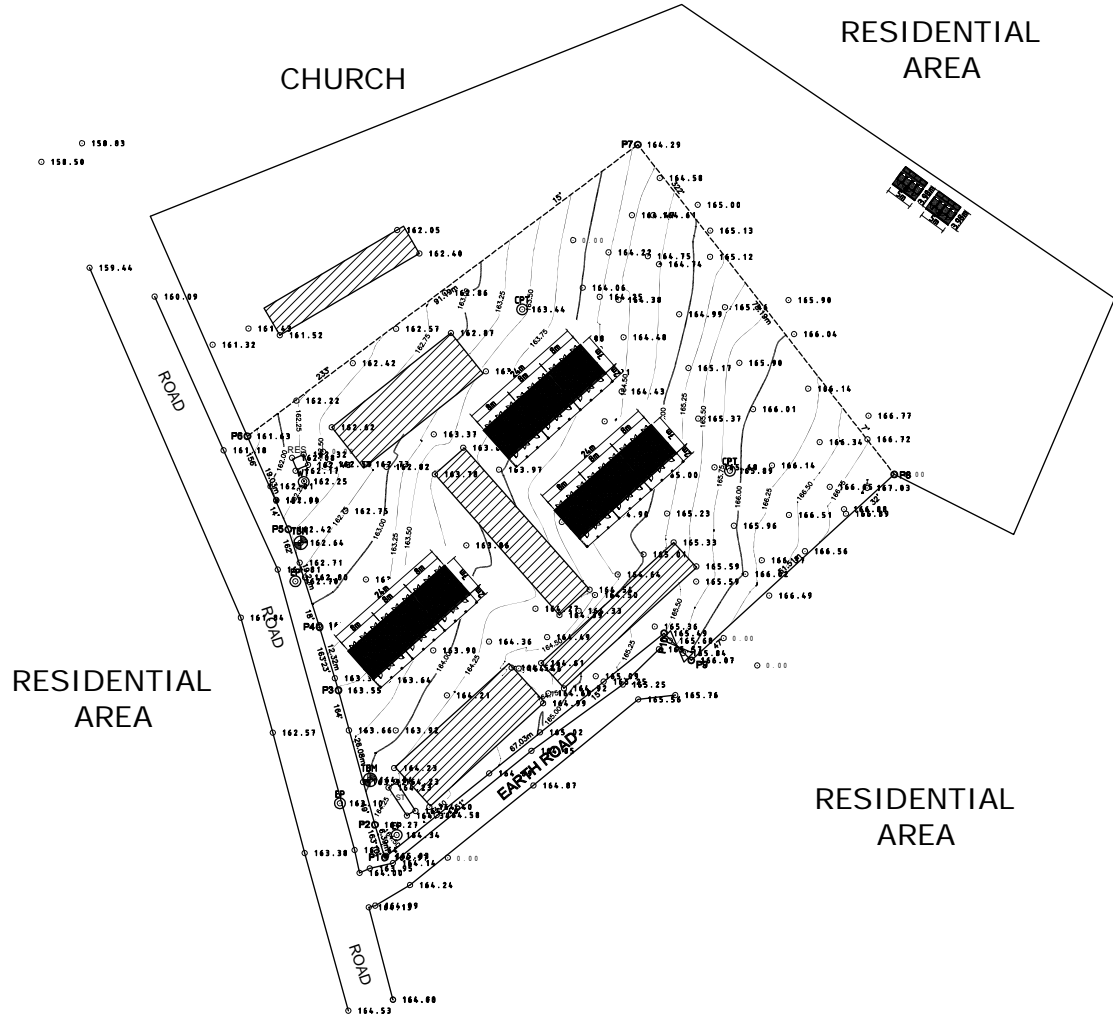
LEGEND

- BOUNDARY
- ROAD
- SPOT HEIGHT
- TEMPORARY BENCHMARK
- BUILDING
- DILAPIDATED BUILDING
- TOILET
- GATE
- CONE PENETROMETER POINT
- BOREHOLE
- WELL
- ELECTRIC POLE
- RESERVOIR
- ELECTRIC TRANSFORMER
- TREE

PROJECT The Project for Construction of Classrooms for Primary Schools in OYO State in The Federal Republic of Nigeria	CLIENT	CONSULTANTS yec YACHIYO ENGINEERING CO., LTD. TOKYO, JAPAN	TITLE LOCATION PLAN OF P12-N37 ABADINA PRIMARY SCHOOL U.I., IBADAN NORTH LGEA OYO STATE				DRG NO : A 02 P12-N37
			APPROVED BY : N. MINAMI	CHECKED BY : T. KURUMADA	DESIGNED BY : K. OHARA	DATE : AUG.2014	SCALE : 1:1000



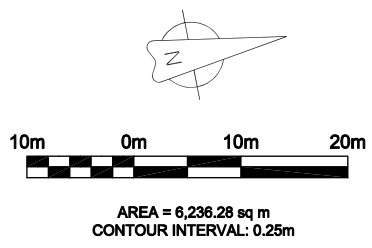
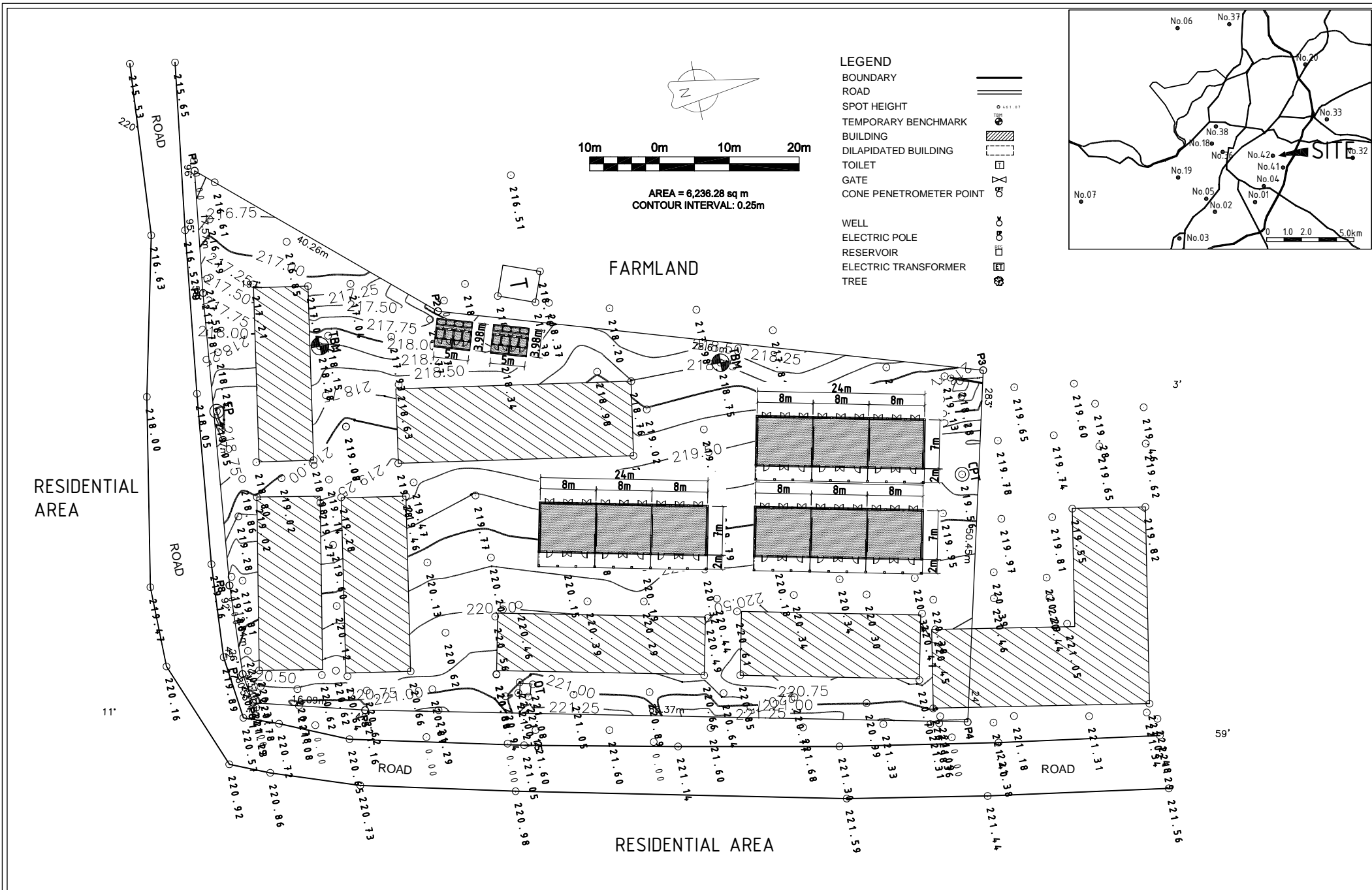
<p>PROJECT</p> <p>The Project for Construction of Classrooms for Primary Schools in OYO State in The Federal Republic of Nigeria</p>	<p>CLIENT</p>	<p>CONSULTANTS</p> <p>yoc YACHIYO ENGINEERING CO., LTD. TOKYO, JAPAN</p>	<p>TITLE LOCATION PLAN OF P13-N11 ST. MARY'S (RCM) PRIMARY SCHOOL I ISEYIN LGEA OYO STATE</p> <p>APPROVED BY: N. MINAMI</p> <p>CHECKED BY: T. KURUMADA</p> <p>DESIGNED BY: K. OHARA</p> <p>DATE: AUG.2014</p>	<p>DRG NO: A 02 P13-N11</p> <p>SCALE: 1:1000</p>
--	---------------	---	---	--



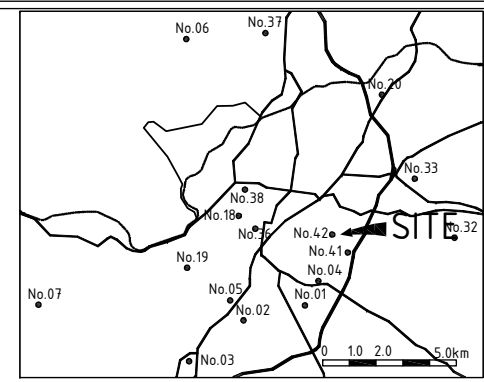
AREA: 8,208.63 sq m
 CONTOUR INTERVAL: 0.25m

- LEGEND**
- BOUNDARY
 - ROAD
 - SPOT HEIGHT
 - TEMPORARY BENCHMARK
 - BUILDING
 - DILAPIDATED BUILDING
 - TOILET
 - GATE
 - CONE PENETROMETER POINT
 - BOREHOLE
 - WELL
 - ELECTRIC POLE
 - RESERVOIR
 - ELECTRIC TRANSFORMER
 - TREE

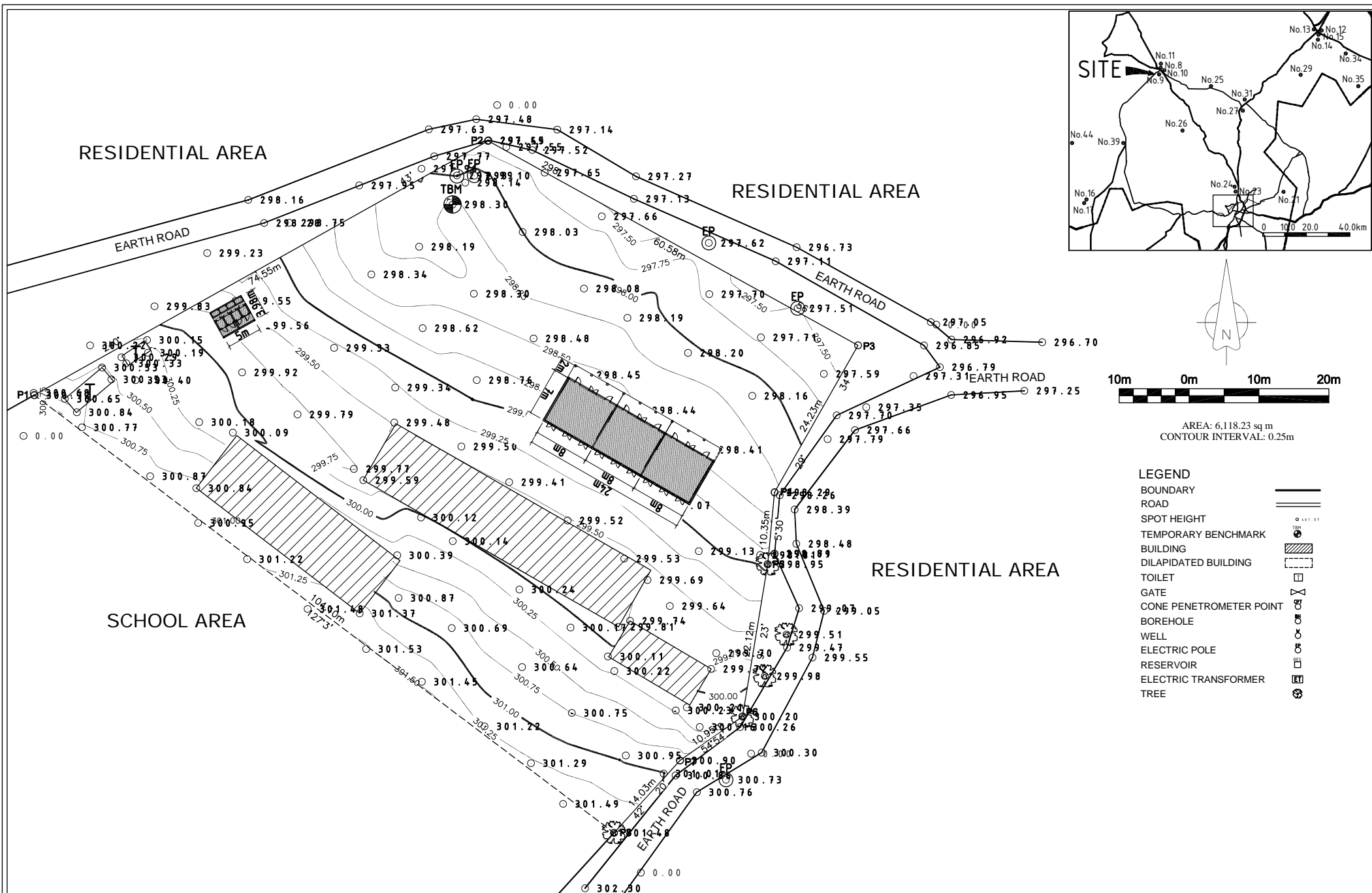
PROJECT The Project for Construction of Classrooms for Primary Schools in OYO State in The Federal Republic of Nigeria	CLIENT	CONSULTANTS yec YACHIYO ENGINEERING CO., LTD. TOKYO, JAPAN	TITLE LOCATION PLAN OF P14-N17 BAPTIST PRIMARY SCHOOL I IGBOORA, IBARAPA CENTRAL LGEA OYO STATE				DRG NO : A 02 P14-N17
			APPROVED BY : N. MINAMI	CHECKED BY : T. KURUMADA	DESIGNED BY : K. OHARA	DATE : AUG.2014	SCALE : 1:1000



- LEGEND**
- BOUNDARY
 - ROAD
 - SPOT HEIGHT
 - TEMPORARY BENCHMARK
 - BUILDING
 - DILAPIDATED BUILDING
 - TOILET
 - GATE
 - GATE
 - CONE PENETROMETER POINT
 - WELL
 - ELECTRIC POLE
 - RESERVOIR
 - ELECTRIC TRANSFORMER
 - TREE



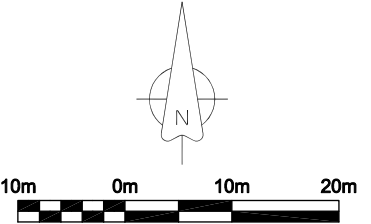
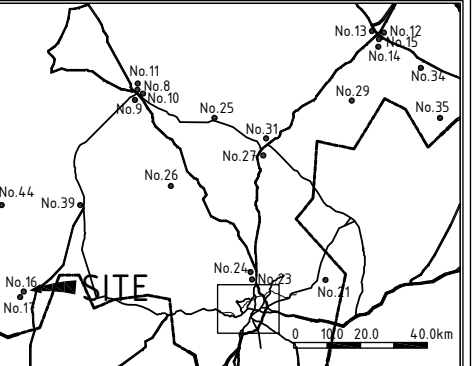
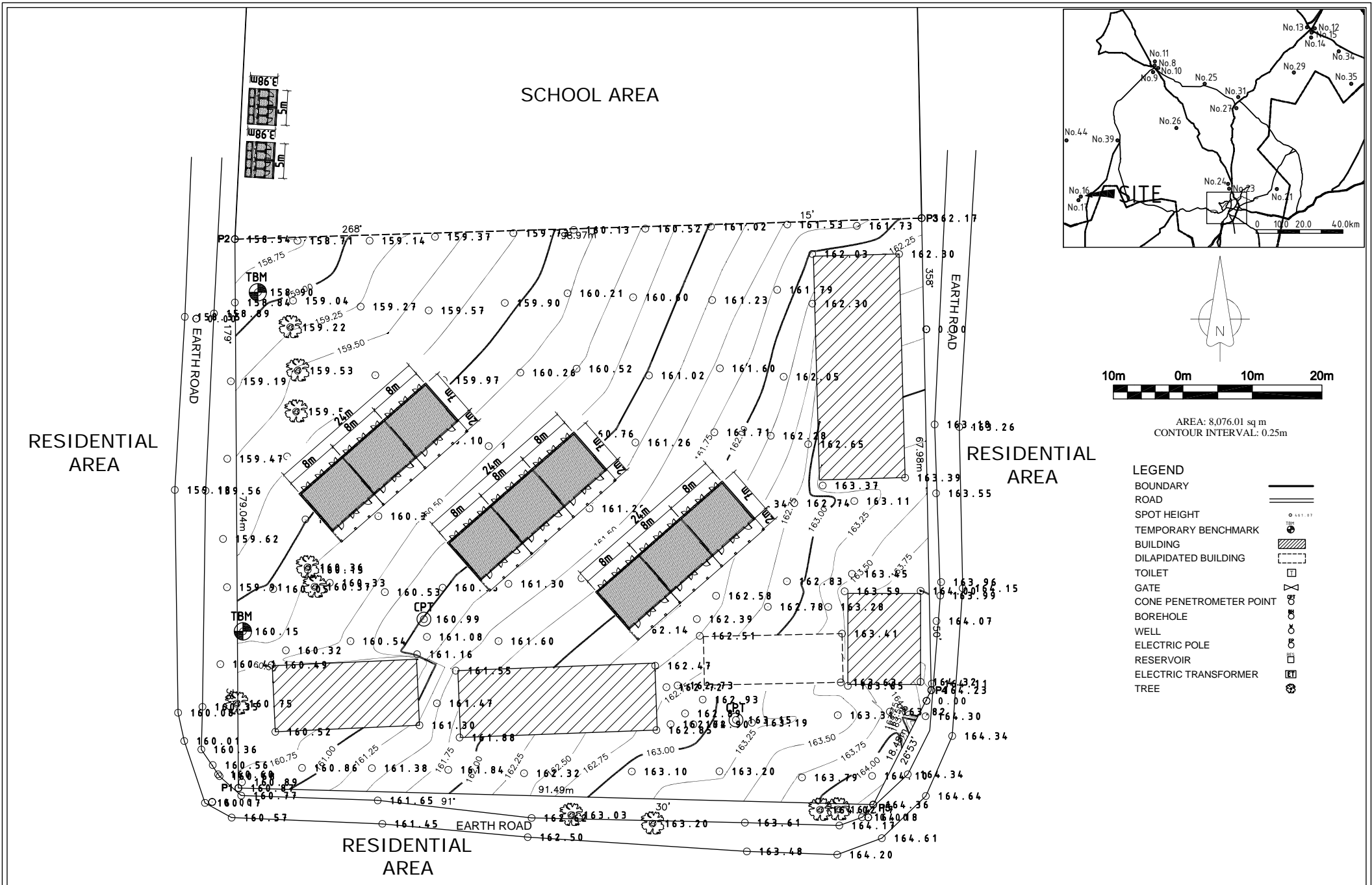
PROJECT The Project for Construction of Classrooms for Primary Schools in OYO State in The Federal Republic of Nigeria	CLIENT	CONSULTANTS yec YACHIYO ENGINEERING CO., LTD. TOKYO, JAPAN	TITLE LOCATION PLAN OF P17-N42 COMMUNITY PRIMARY SCHOOL 1-4 AYEKALE, IBADAN NORTH EAST LGEA OYO STATE				DRG NO: A 02 P17-N42
			APPROVED BY: N. MINAMI	CHECKED BY: T. KURUMADA	DESIGNED BY: K. OHARA	DATE: AUG.2014	SCALE: 1:500



AREA: 6,118.23 sq m
 CONTOUR INTERVAL: 0.25m

- LEGEND**
- BOUNDARY
 - ROAD
 - SPOT HEIGHT
 - TEMPORARY BENCHMARK
 - BUILDING
 - DILAPIDATED BUILDING
 - TOILET
 - GATE
 - CONE PENETROMETER POINT
 - BOREHOLE
 - WELL
 - ELECTRIC POLE
 - RESERVOIR
 - ELECTRIC TRANSFORMER
 - TREE

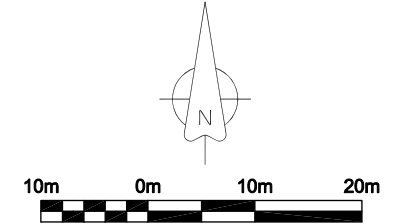
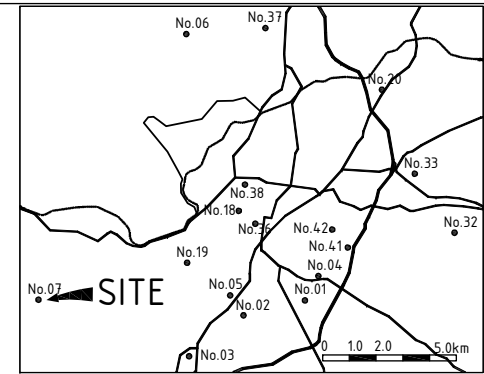
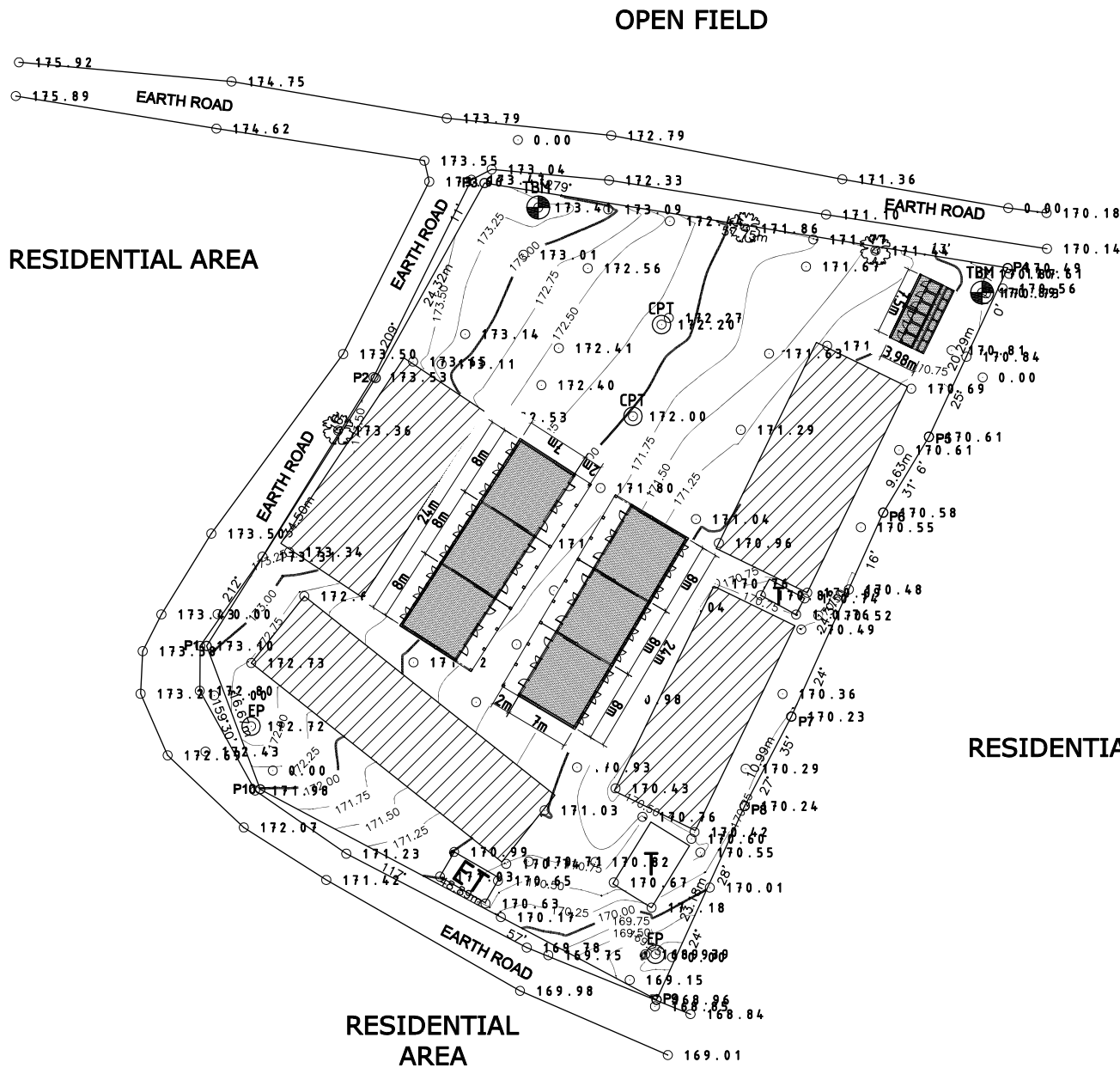
PROJECT The Project for Construction of Classrooms for Primary Schools in OYO State in The Federal Republic of Nigeria	CLIENT	CONSULTANTS yec YACHIYO ENGINEERING CO., LTD. TOKYO, JAPAN	TITLE LOCATION PLAN OF P18-N9 METHODIST PRIMARY SCHOOL AGO-JIO, ISEYIN LGEA OYO STATE				DRG NO: A 02 P18-N9
			APPROVED BY: N. MINAMI	CHECKED BY: T. KURUMADA	DESIGNED BY: K. OHARA	DATE: AUG.2014	SCALE: 1:500



AREA: 8,076.01 sq m
CONTOUR INTERVAL: 0.25m

- LEGEND**
- BOUNDARY
 - ROAD
 - SPOT HEIGHT
 - TEMPORARY BENCHMARK
 - BUILDING
 - DILAPIDATED BUILDING
 - TOILET
 - GATE
 - CONE PENETROMETER POINT
 - BOREHOLE
 - WELL
 - ELECTRIC POLE
 - RESERVOIR
 - ELECTRIC TRANSFORMER
 - TREE

PROJECT The Project for Construction of Classrooms for Primary Schools in OYO State in The Federal Republic of Nigeria	CLIENT	CONSULTANTS yec YACHIYO ENGINEERING CO., LTD. TOKYO, JAPAN	TITLE LOCATION PLAN OF P19-N16 METHODIST SCHOOL III OKE-ODO, IGBOORA, IBARAPA CENTRAL LGEA OYO STATE				DRG NO: A 02 P19-N16
			APPROVED BY: N. MINAMI	CHECKED BY: T. KURUMADA	DESIGNED BY: K. OHARA	DATE: AUG.2014	SCALE: 1:500

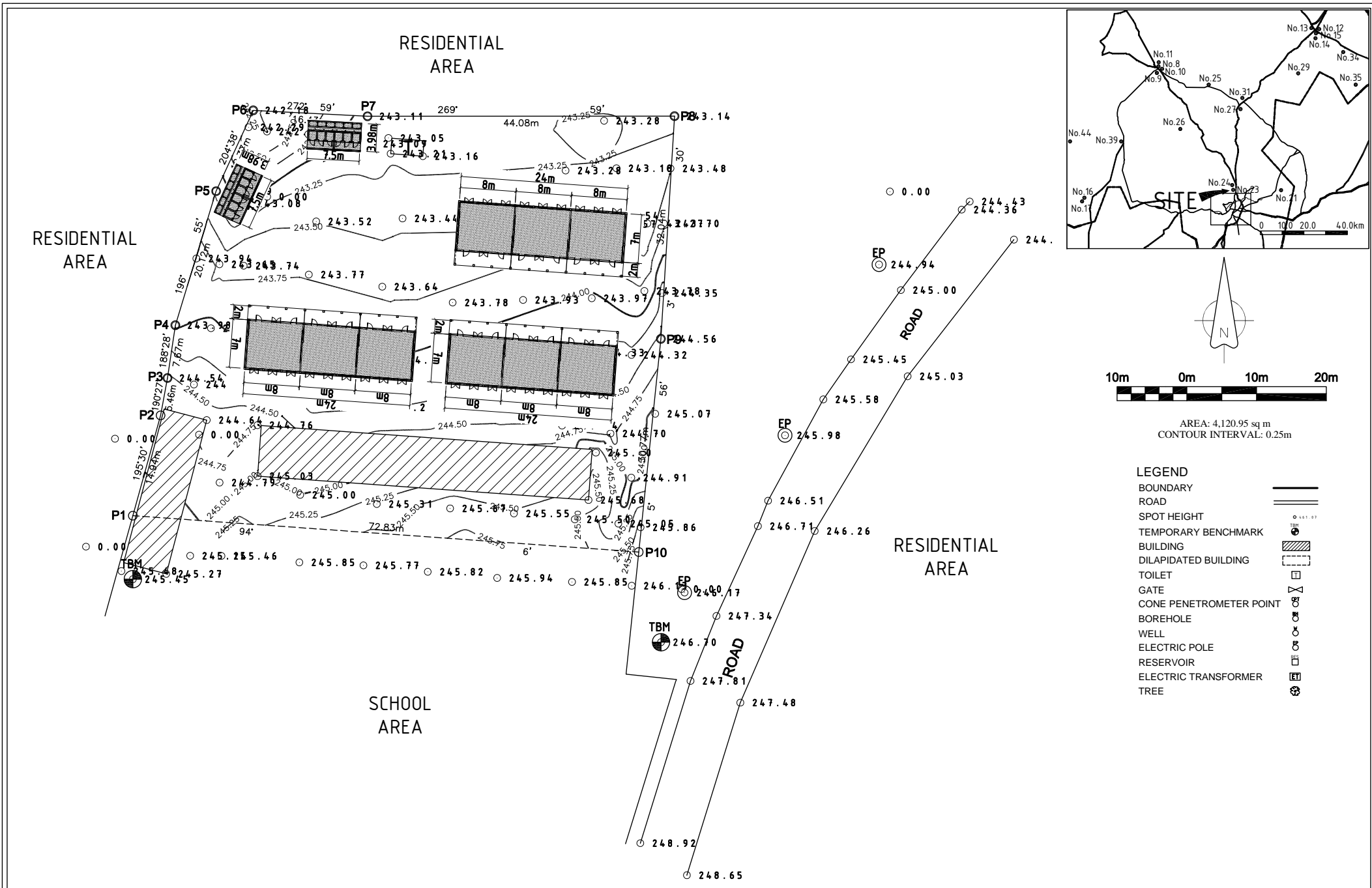


AREA: 4496.02 sq m
 CONTOUR INTERVAL: 0.25m

LEGEND

BOUNDARY	———
ROAD	====
SPOT HEIGHT	○ 171.57
TEMPORARY BENCHMARK	⊕ TBM
BUILDING	▨
DILAPIDATED BUILDING	⋯
TOILET	⊠
GATE	⊞
CONE PENETROMETER POINT	⊙ CPT
BOREHOLE	⊕
WELL	⊕
ELECTRIC POLE	⊕
RESERVOIR	⊠
ELECTRIC TRANSFORMER	⊠
TREE	⊙

PROJECT The Project for Construction of Classrooms for Primary Schools in OYO State in The Federal Republic of Nigeria	CLIENT	CONSULTANTS yec YACHIYO ENGINEERING CO., LTD. TOKYO, JAPAN	TITLE LOCATION PLAN OF P20-N7 COMMUNITY PRIMARY SCHOOL OLUODE, IDO LGEEA OYO STATE				DRG NO : A 02 P20-N7
			APPROVED BY : N. MINAMI	CHECKED BY : T. KURUMADA	DESIGNED BY : K. OHARA	DATE : AUG.2014	SCALE : 1:500



AREA: 4,120.95 sq m
 CONTOUR INTERVAL: 0.25m

LEGEND

BOUNDARY	
ROAD	
SPOT HEIGHT	
TEMPORARY BENCHMARK	
BUILDING	
DILAPIDATED BUILDING	
TOILET	
GATE	
CONE PENETROMETER POINT	
BOREHOLE	
WELL	
ELECTRIC POLE	
RESERVOIR	
ELECTRIC TRANSFORMER	
TREE	

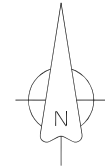
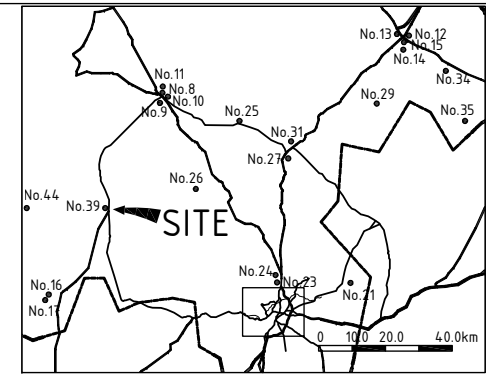
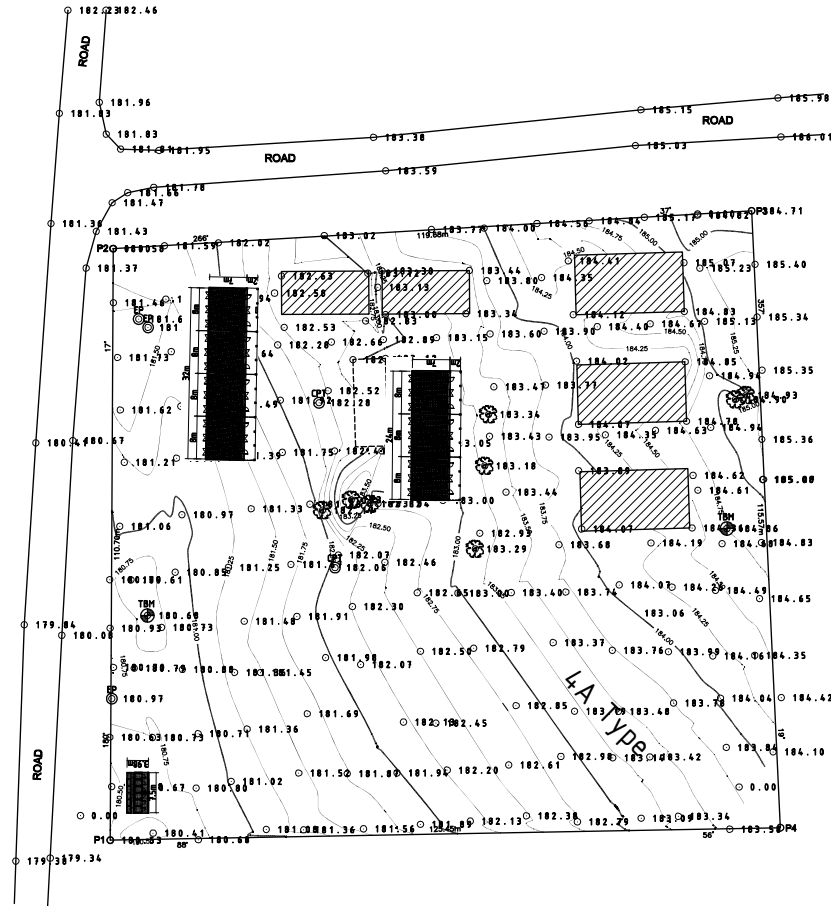
PROJECT The Project for Construction of Classrooms for Primary Schools in OYO State in The Federal Republic of Nigeria	CLIENT	CONSULTANTS yec YACHIYO ENGINEERING CO., LTD. TOKYO, JAPAN	TITLE LOCATION PLAN OF P21-N23 EBENEZER ANGLICAN SCHOOL AKINYELE LGEA OYO STATE				DRG NO: A 02 P21-N23
			APPROVED BY: N. MINAMI	CHECKED BY: T. KURUMADA	DESIGNED BY: K. OHARA	DATE: AUG.2014	SCALE: 1:500

VILLAGE SETTLEMENT

VILLAGE SETTLEMENT

GRASSLAND

OPEN FIELD

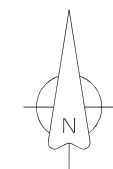
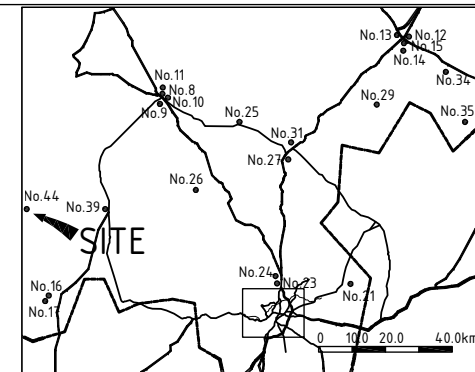


AREA: 13,856.73 sq m
CONTOUR INTERVAL: 0.25m

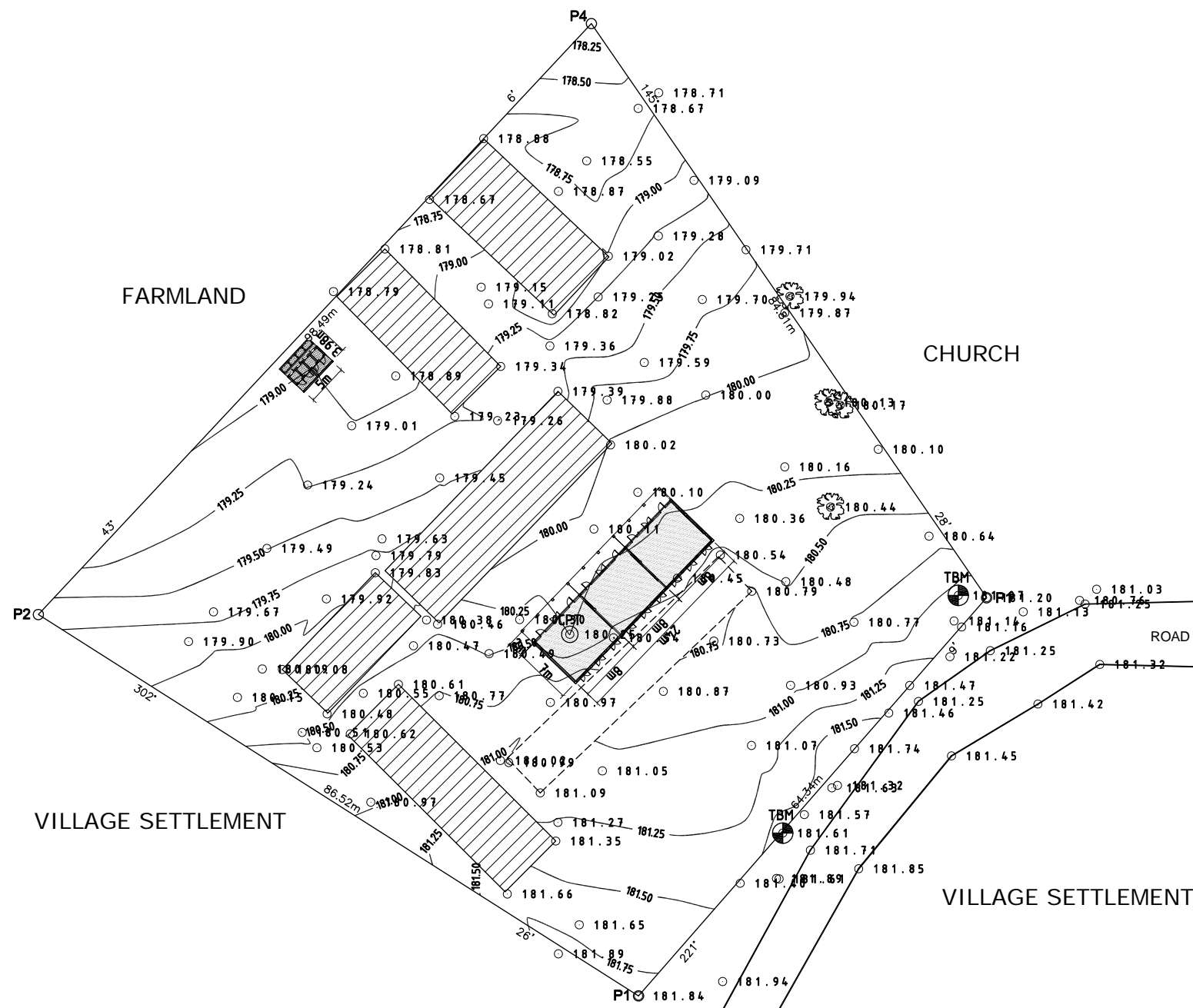
LEGEND

BOUNDARY	———
ROAD	====
SPOT HEIGHT	○ 441.07
TEMPORARY BENCHMARK	⊕
BUILDING	▨
DILAPIDATED BUILDING	- - - -
TOILET	□
GATE	⊗
CONE PENETROMETER POINT	⊗
BOREHOLE	⊕
WELL	⊕
ELECTRIC POLE	⊕
RESERVOIR	⊕
ELECTRIC TRANSFORMER	⊕
TREE	⊕

PROJECT The Project for Construction of Classrooms for Primary Schools in OYO State in The Federal Republic of Nigeria	CLIENT	CONSULTANTS yec YACHIYO ENGINEERING CO., LTD. TOKYO, JAPAN	TITLE LOCATION PLAN OF P22-N39 BAPTIST PRIMARY SCHOOL MAYA, LANLATE, IBARAPA EAST LGEA OYO STATE				DRG NO: A 02 P22-N39
			APPROVED BY: N. MINAMI	CHECKED BY: T. KURUMADA	DESIGNED BY: K. OHARA	DATE: AUG.2014	SCALE: 1:1000

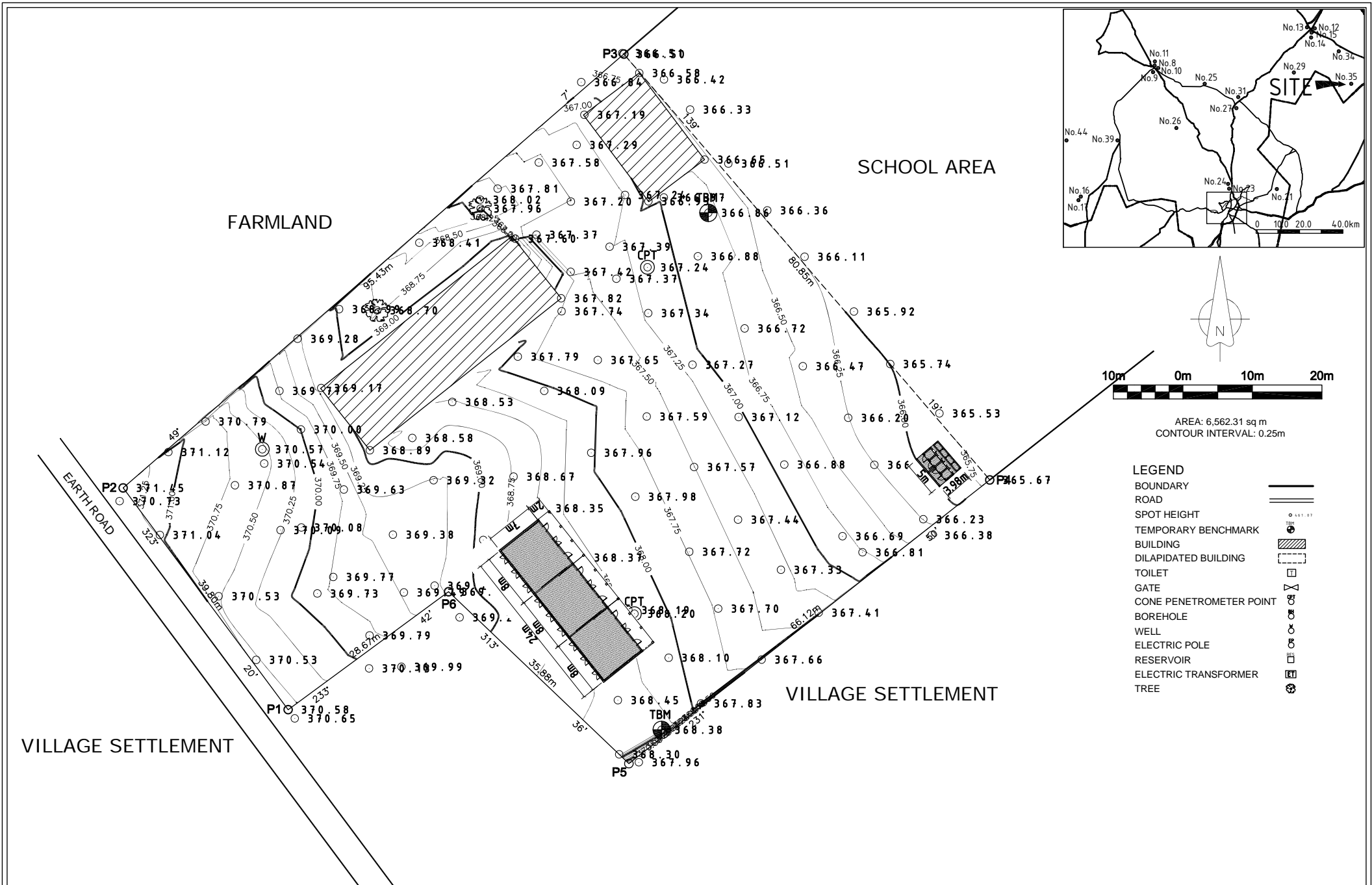


AREA: 6,830.61 sq m
CONTOUR INTERVAL: 0.25m



- LEGEND**
- BOUNDARY
 - ROAD
 - SPOT HEIGHT
 - TEMPORARY BENCHMARK
 - BUILDING
 - DILAPIDATED BUILDING
 - TOILET
 - GATE
 - CONE PENETROMETER POINT
 - BOREHOLE
 - WELL
 - ELECTRIC POLE
 - RESERVOIR
 - ELECTRIC TRANSFORMER
 - TREE

PROJECT The Project for Construction of Classrooms for Primary Schools in OYO State in The Federal Republic of Nigeria	CLIENT	CONSULTANTS yec YACHIYO ENGINEERING CO., LTD. TOKYO, JAPAN	TITLE LOCATION PLAN OF P23-N44 ST. ANNE'S CATHOLIC SCHOOL IBARAPA NORTH LGEA OYO STATE				DRG NO: A 02 P23-N44
			APPROVED BY: N. MINAMI	CHECKED BY: T. KURUMADA	DESIGNED BY: K. OHARA	DATE: AUG.2014	SCALE: 1:500



- AREA: 6,562.31 sq m
CONTOUR INTERVAL: 0.25m
- LEGEND**
- BOUNDARY
 - ROAD
 - SPOT HEIGHT
 - TEMPORARY BENCHMARK
 - BUILDING
 - DILAPIDATED BUILDING
 - TOILET
 - GATE
 - CONE PENETROMETER POINT
 - BOREHOLE
 - WELL
 - ELECTRIC POLE
 - RESERVOIR
 - ELECTRIC TRANSFORMER
 - TREE

PROJECT The Project for Construction of Classrooms for Primary Schools in OYO State in The Federal Republic of Nigeria	CLIENT	CONSULTANTS YEC YACHIYO ENGINEERING CO., LTD. TOKYO, JAPAN	TITLE LOCATION PLAN OF P24-N35 BAPTIST BASIC SCHOOL IPASA, SURULERE LGEA OYO STATE				DRG NO : A 02 P24-N35
			APPROVED BY : N. MINAMI	CHECKED BY : T. KURUMADA	DESIGNED BY : K. OHARA	DATE : AUG.2014	SCALE : 1:500