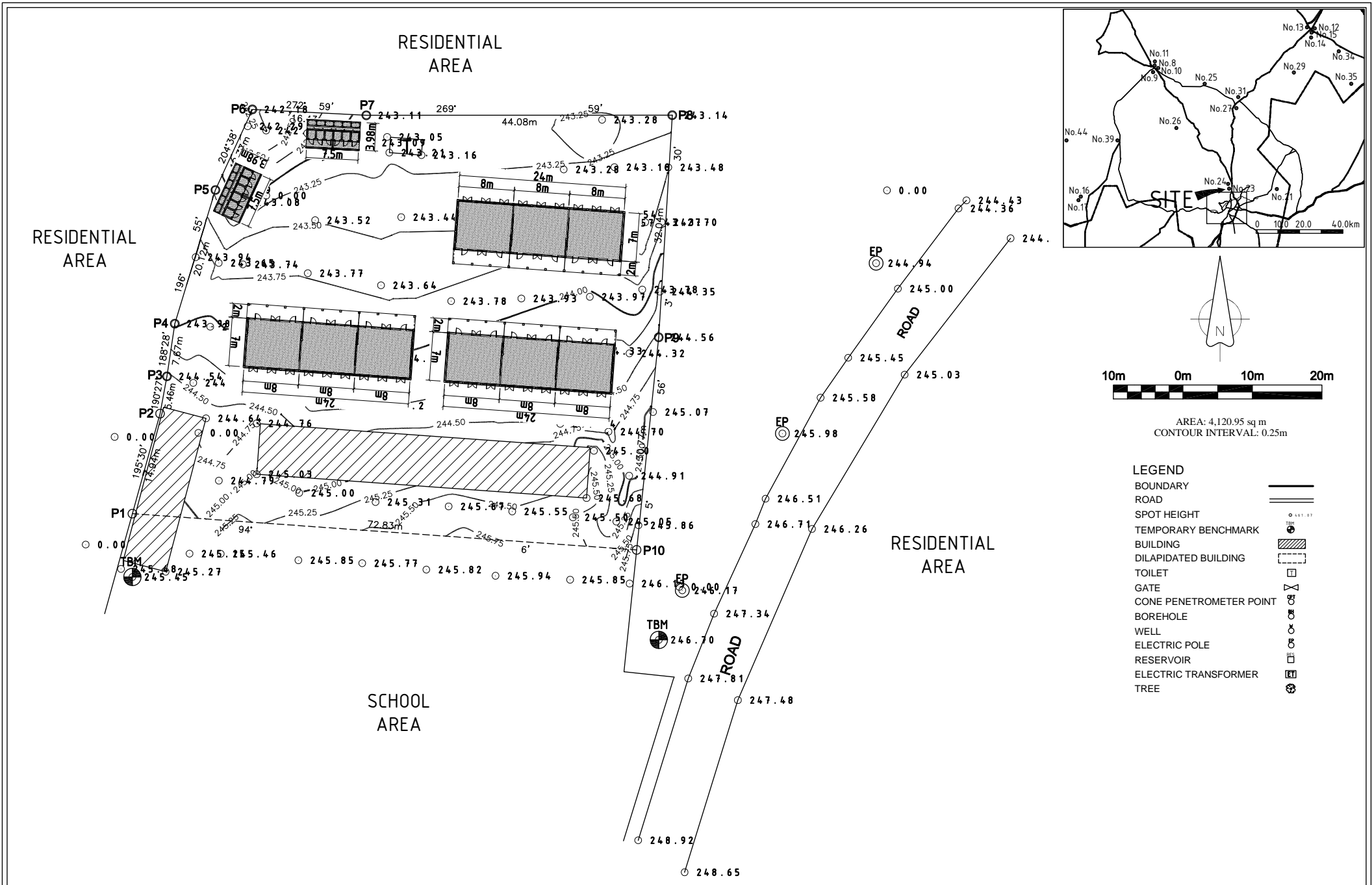


AREA: 4496.02 sq m  
CONTOUR INTERVAL: 0.25m

**LEGEND**

- BOUNDARY —————
- ROAD =====
- SPOT HEIGHT ○ 141.57
- TEMPORARY BENCHMARK ⊕ TBM
- BUILDING ▨
- DILAPIDATED BUILDING - - - - -
- TOILET ⊠
- GATE ⊞
- CONE PENETROMETER POINT ⊙ CPT
- BOREHOLE ⊕
- WELL ⊕
- ELECTRIC POLE ⊕
- RESERVOIR ⊕
- ELECTRIC TRANSFORMER ⊕
- TREE ⊕

|  |               |   |   |  |
|--|---------------|---|---|--|
| <p>PROJECT</p> <p>The Project for Construction of Classrooms for Primary Schools in OYO State in The Federal Republic of Nigeria</p> | <p>CLIENT</p> | <p>CONSULTANTS</p> <p><b>yec</b> YACHIYO ENGINEERING CO., LTD.<br/>TOKYO, JAPAN</p> | <p>TITLE LOCATION PLAN OF P20-N7 COMMUNITY PRIMARY SCHOOL<br/>OLUODE, IDO LGEEA OYO STATE</p> <p>APPROVED BY: N. MINAMI</p> <p>CHECKED BY: T. KURUMADA</p> <p>DESIGNED BY: K. OHARA</p> <p>DATE: AUG.2014</p> | <p>DRG NO:<br/>A 02 P20-N7</p> <p>SCALE:<br/>1:500</p> |
|--|---------------|---|---|--|



AREA: 4,120.95 sq m  
 CONTOUR INTERVAL: 0.25m

- LEGEND**
- BOUNDARY
  - ROAD
  - SPOT HEIGHT
  - TEMPORARY BENCHMARK
  - BUILDING
  - DILAPIDATED BUILDING
  - TOILET
  - GATE
  - CONE PENETROMETER POINT
  - BOREHOLE
  - WELL
  - ELECTRIC POLE
  - RESERVOIR
  - ELECTRIC TRANSFORMER
  - TREE

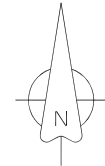
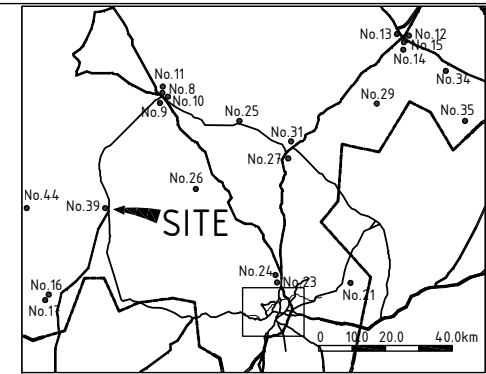
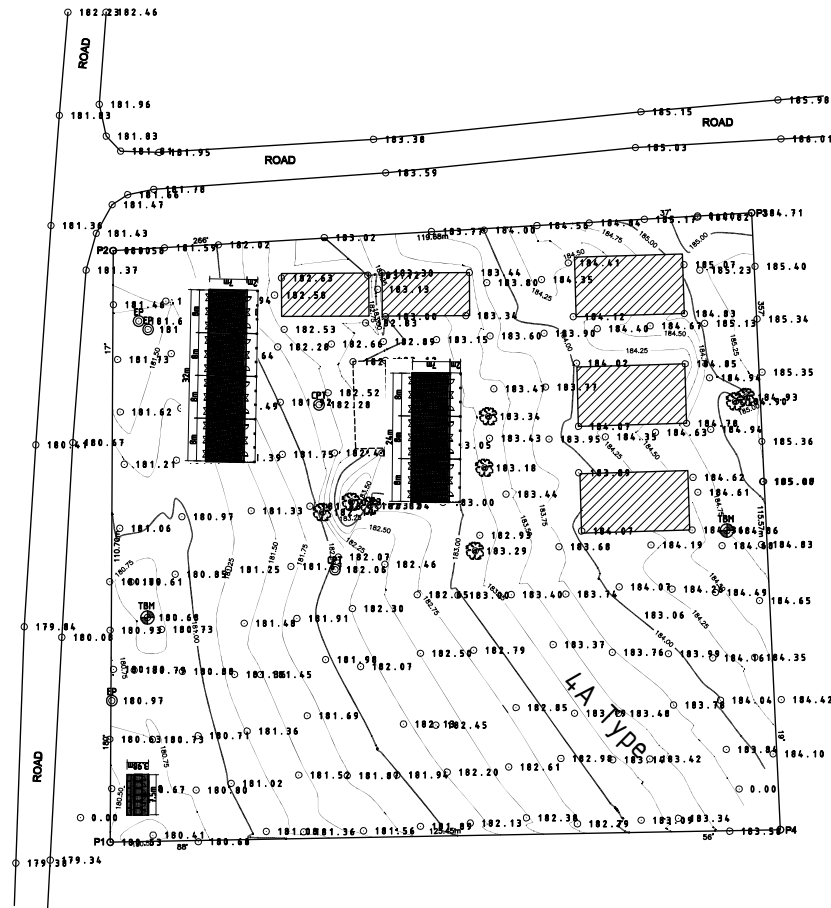
|   |        |   |  |                            |                          |                   |                         |
|---|--------|---|--|----------------------------|--------------------------|-------------------|-------------------------|
| PROJECT<br>The Project for Construction of Classrooms<br>for Primary Schools in OYO State<br>in The Federal Republic of Nigeria | CLIENT | CONSULTANTS<br><b>yec</b> YACHIYO ENGINEERING CO., LTD.<br>TOKYO, JAPAN | TITLE LOCATION PLAN OF P21-N23 EBENEZER ANGLICAN SCHOOL<br>AKINYELE LGEA OYO STATE |                            |                          |                   | DRG NO:<br>A 02 P21-N23 |
|   |        |   | APPROVED BY:<br>N. MINAMI  | CHECKED BY:<br>T. KURUMADA | DESIGNED BY:<br>K. OHARA | DATE:<br>AUG.2014 | SCALE:<br>1:500         |

VILLAGE SETTLEMENT

VILLAGE SETTLEMENT

GRASSLAND

OPEN FIELD

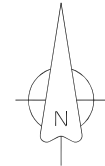
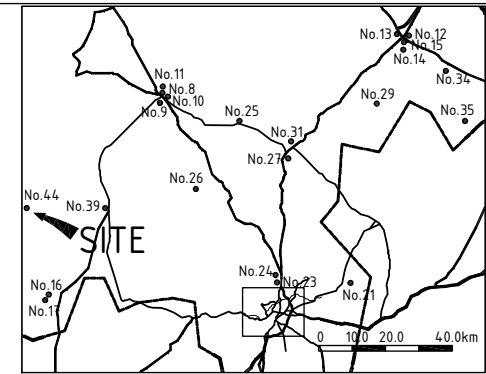


AREA: 13,856.73 sq m  
CONTOUR INTERVAL: 0.25m

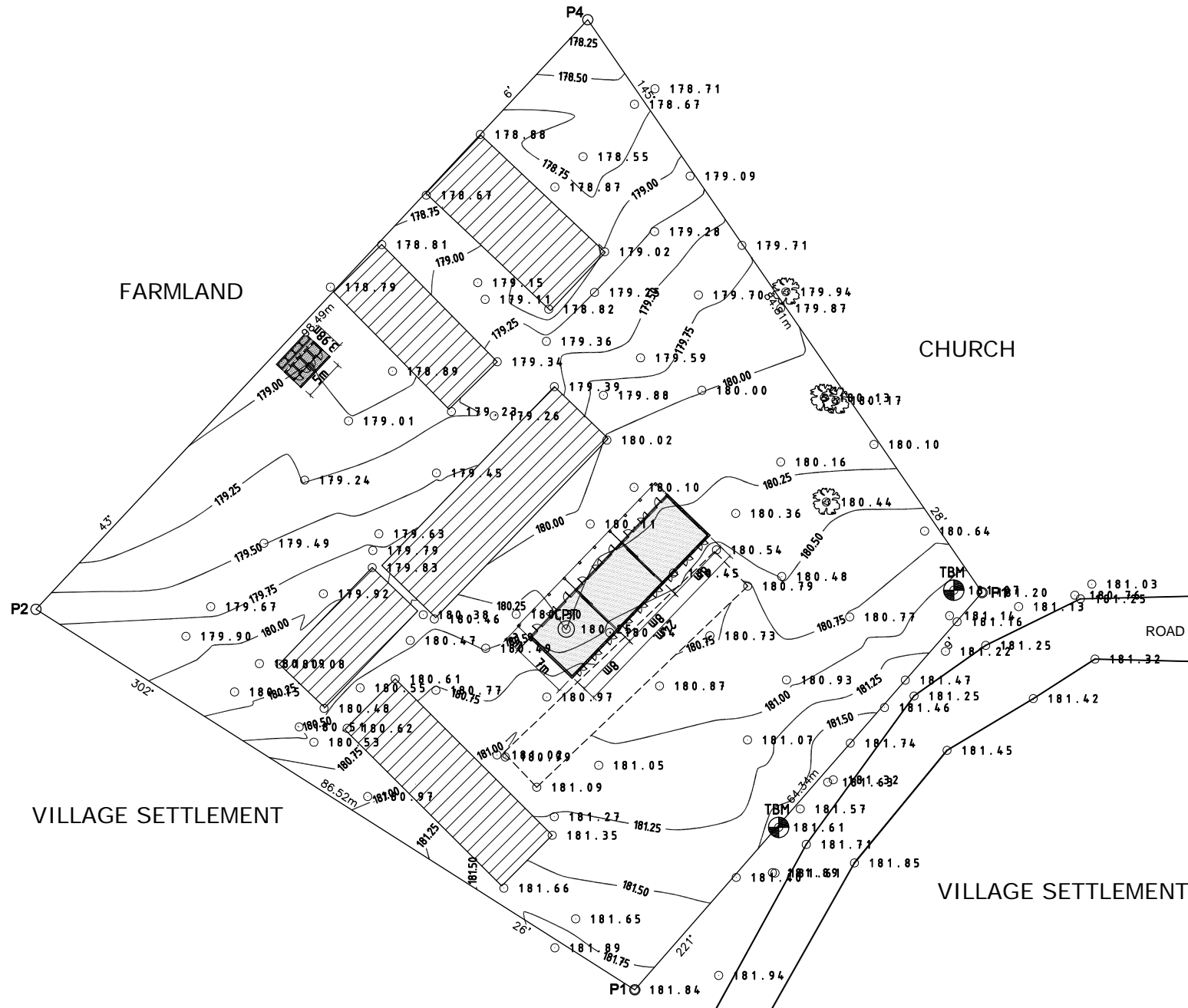
LEGEND

- BOUNDARY
- ROAD
- SPOT HEIGHT
- TEMPORARY BENCHMARK
- BUILDING
- DILAPIDATED BUILDING
- TOILET
- GATE
- CONE PENETROMETER POINT
- BOREHOLE
- WELL
- ELECTRIC POLE
- RESERVOIR
- ELECTRIC TRANSFORMER
- TREE

|   |        |   |   |                            |                          |                   |                         |
|---|--------|---|---|----------------------------|--------------------------|-------------------|-------------------------|
| PROJECT<br>The Project for Construction of Classrooms<br>for Primary Schools in OYO State<br>in The Federal Republic of Nigeria | CLIENT | CONSULTANTS<br><b>yec</b> YACHIYO ENGINEERING CO., LTD.<br>TOKYO, JAPAN | TITLE LOCATION PLAN OF P22-N39 BAPTIST PRIMARY SCHOOL<br>MAYA, LANLATE, IBARAPA EAST LGEA OYO STATE |                            |                          |                   | DRG NO:<br>A 02 P22-N39 |
|   |        |   | APPROVED BY:<br>N. MINAMI   | CHECKED BY:<br>T. KURUMADA | DESIGNED BY:<br>K. OHARA | DATE:<br>AUG.2014 | SCALE:<br>1:1000        |

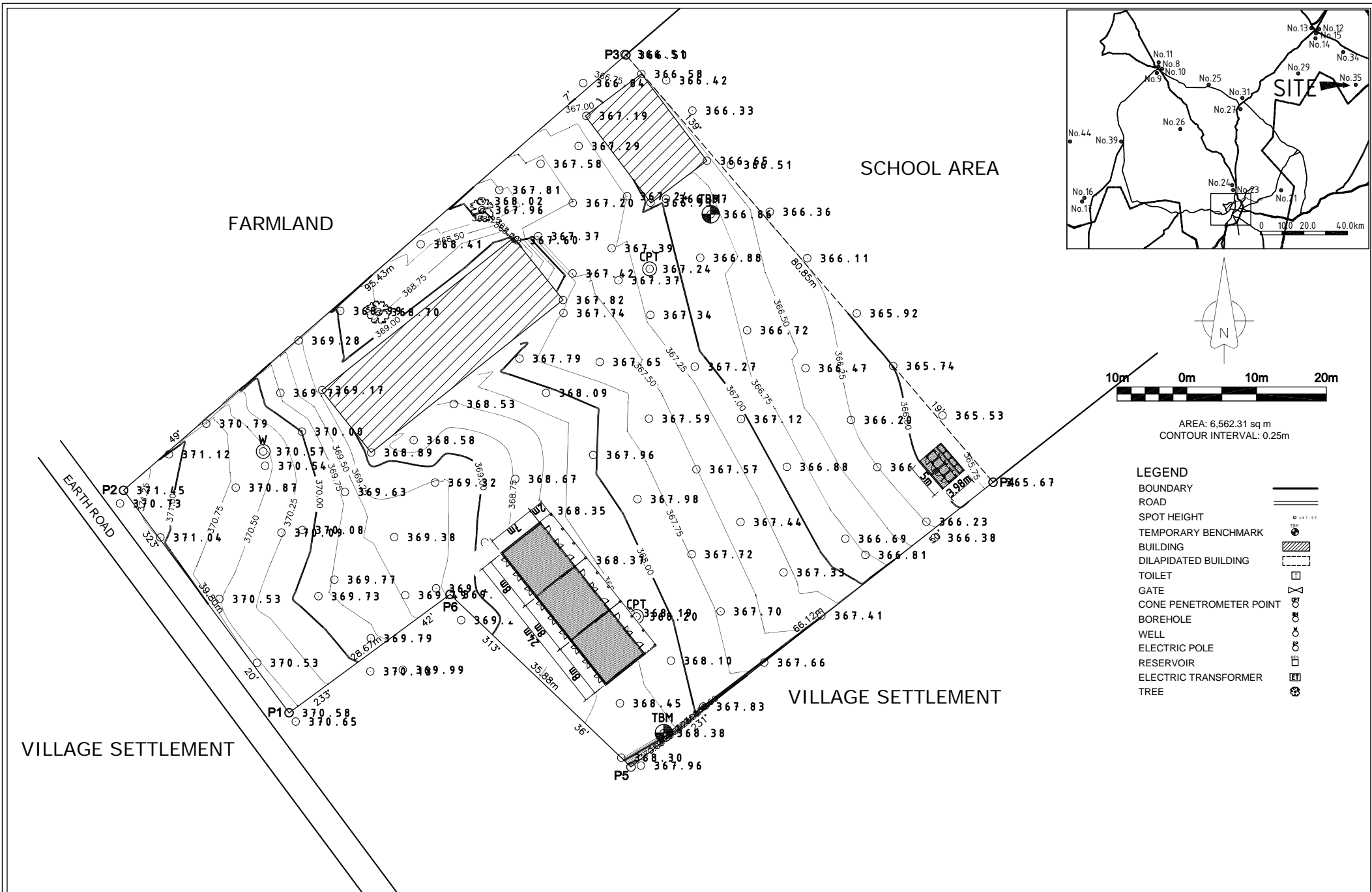


AREA: 6,830.61 sq m  
CONTOUR INTERVAL: 0.25m

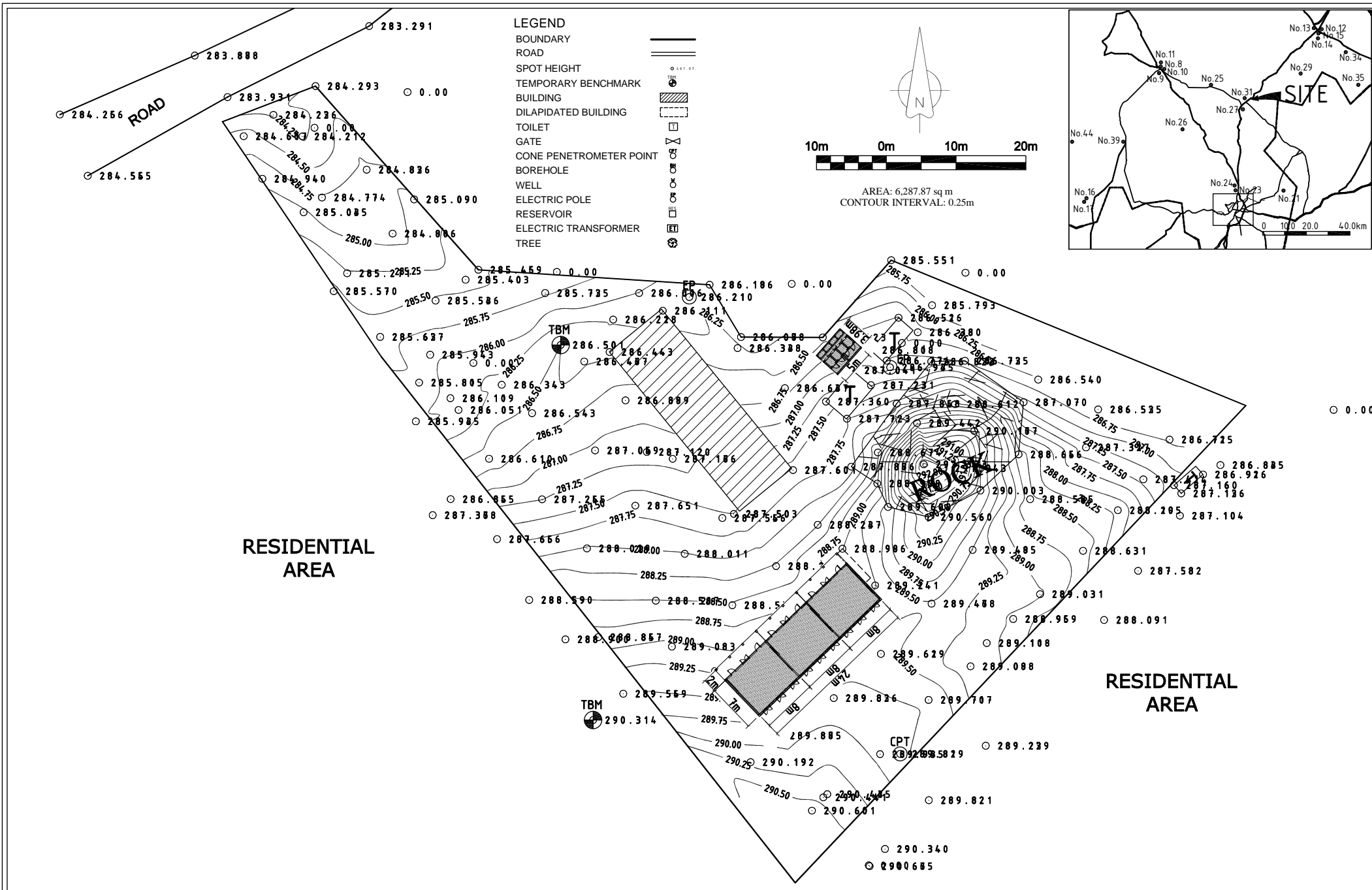


- LEGEND**
- BOUNDARY
  - ROAD
  - SPOT HEIGHT
  - TEMPORARY BENCHMARK
  - BUILDING
  - DILAPIDATED BUILDING
  - TOILET
  - GATE
  - CONE PENETROMETER POINT
  - BOREHOLE
  - WELL
  - ELECTRIC POLE
  - RESERVOIR
  - ELECTRIC TRANSFORMER
  - TREE

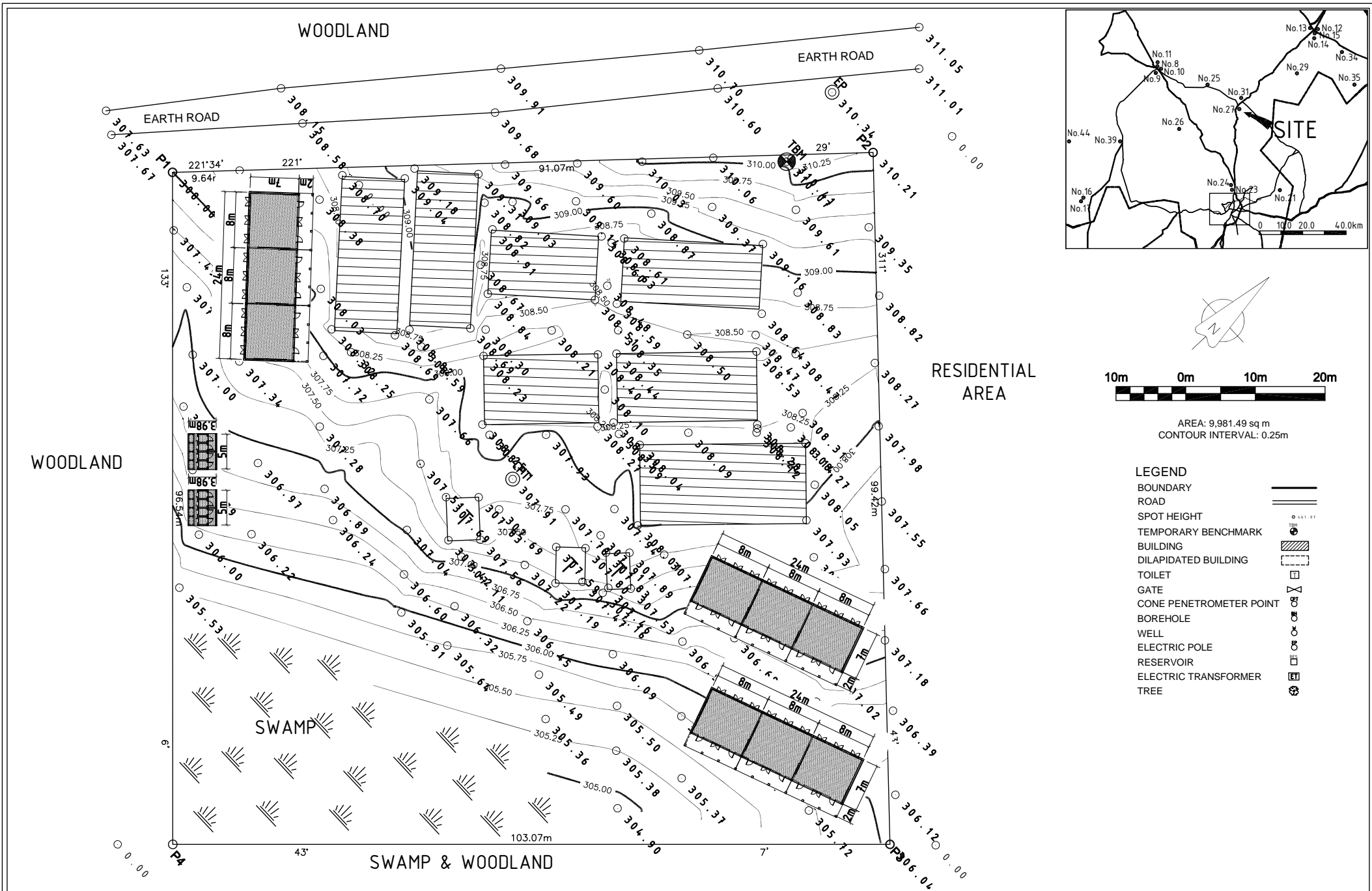
|   |        |   |   |                            |                          |                   |                         |
|---|--------|---|---|----------------------------|--------------------------|-------------------|-------------------------|
| PROJECT<br>The Project for Construction of Classrooms<br>for Primary Schools in OYO State<br>in The Federal Republic of Nigeria | CLIENT | CONSULTANTS<br><b>yec</b> YACHIYO ENGINEERING CO., LTD.<br>TOKYO, JAPAN | TITLE LOCATION PLAN OF P23-N44 ST. ANNE'S CATHOLIC SCHOOL<br>IBARAPA NORTH LGEA OYO STATE |                            |                          |                   | DRG NO:<br>A 02 P23-N44 |
|   |        |   | APPROVED BY:<br>N. MINAMI   | CHECKED BY:<br>T. KURUMADA | DESIGNED BY:<br>K. OHARA | DATE:<br>AUG.2014 | SCALE:<br>1:500         |



|   |        |   |   |                             |                           |                    |                          |
|---|--------|---|---|-----------------------------|---------------------------|--------------------|--------------------------|
| PROJECT<br>The Project for Construction of Classrooms<br>for Primary Schools in OYO State<br>in The Federal Republic of Nigeria | CLIENT | CONSULTANTS<br><b>yec</b> YACHIYO ENGINEERING CO., LTD.<br>TOKYO, JAPAN | TITLE LOCATION PLAN OF P24-N35 BAPTIST BASIC SCHOOL<br>IPASA, SURULERE LGEA OYO STATE |                             |                           |                    | DRG NO :<br>A 02 P24-N35 |
|   |        |   | APPROVED BY :<br>N. MINAMI  | CHECKED BY :<br>T. KURUMADA | DESIGNED BY :<br>K. OHARA | DATE :<br>AUG.2014 | SCALE :<br>1:500         |



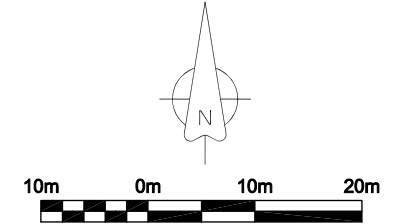
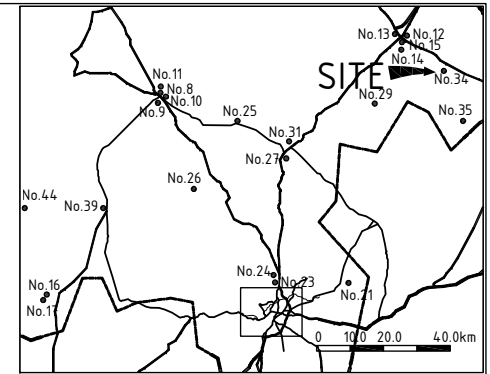
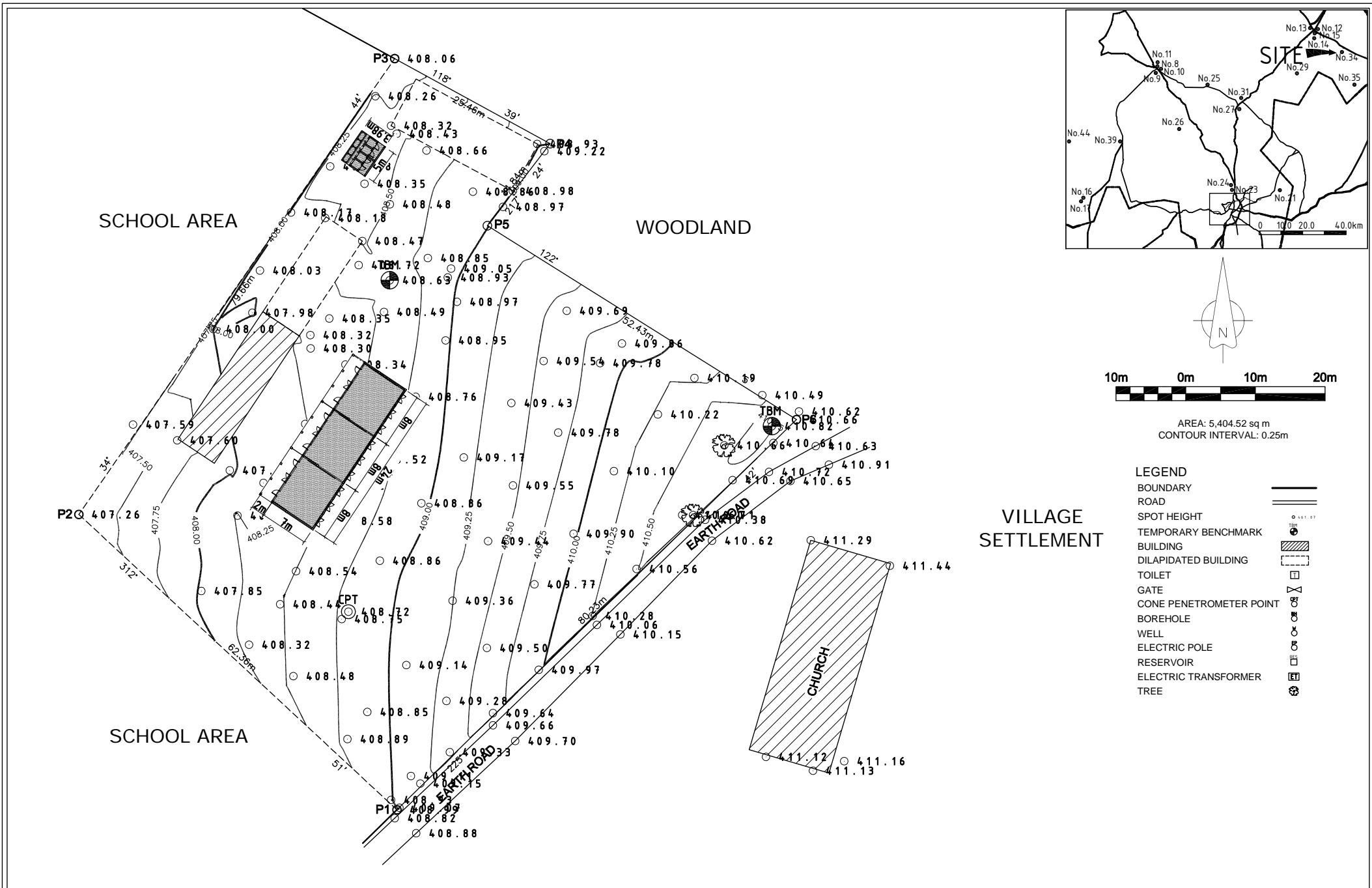
|   |        |   |   |                            |                          |                   |                         |
|---|--------|---|---|----------------------------|--------------------------|-------------------|-------------------------|
| PROJECT<br>The Project for Construction of Classrooms<br>for Primary Schools in OYO State<br>in The Federal Republic of Nigeria | CLIENT | CONSULTANTS<br><b>yec</b> YACHIYO ENGINEERING CO., LTD.<br>TOKYO, JAPAN | TITLE LOCATION PLAN OF P26-N31 L.A. PRIMARY SCHOOL SCHOOL III<br>OKEOLOLA, ATIBA LGEA OYO STATE |                            |                          |                   | DRG NO:<br>A 02 P26-N31 |
|   |        |   | APPROVED BY:<br>N. MINAMI   | CHECKED BY:<br>T. KURUMADA | DESIGNED BY:<br>K. OHARA | DATE:<br>AUG.2014 | SCALE:<br>1:500         |



AREA: 9,981.49 sq m  
 CONTOUR INTERVAL: 0.25m

- LEGEND**
- BOUNDARY ———
  - ROAD = = = =
  - SPOT HEIGHT ○ 441.57
  - TEMPORARY BENCHMARK TBM
  - BUILDING [Hatched Box]
  - DILAPIDATED BUILDING [Dashed Box]
  - TOILET [Toilet Symbol]
  - GATE [Gate Symbol]
  - CONE PENETROMETER POINT [Cone Penetrometer Point Symbol]
  - BOREHOLE [Borehole Symbol]
  - WELL [Well Symbol]
  - ELECTRIC POLE [Electric Pole Symbol]
  - RESERVOIR [Reservoir Symbol]
  - ELECTRIC TRANSFORMER [Electric Transformer Symbol]
  - TREE [Tree Symbol]

|   |        |   |  |                            |                          |                   |                         |
|---|--------|---|--|----------------------------|--------------------------|-------------------|-------------------------|
| PROJECT<br>The Project for Construction of Classrooms<br>for Primary Schools in OYO State<br>in The Federal Republic of Nigeria | CLIENT | CONSULTANTS<br><b>yec</b> YACHIYO ENGINEERING CO., LTD.<br>TOKYO, JAPAN | TITLE LOCATION PLAN OF P27-N27 ST. MICHAEL ANGLICAN PRIMARY SCHOOL<br>ARAROMI, OYO EAST LGEA OYO STATE |                            |                          |                   | DRG NO:<br>A 02 P27-N27 |
|   |        |   | APPROVED BY:<br>N. MINAMI  | CHECKED BY:<br>T. KURUMADA | DESIGNED BY:<br>K. OHARA | DATE:<br>AUG.2014 | SCALE:<br>1:500         |



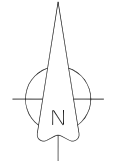
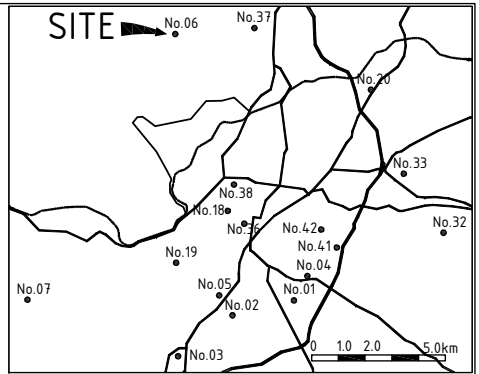
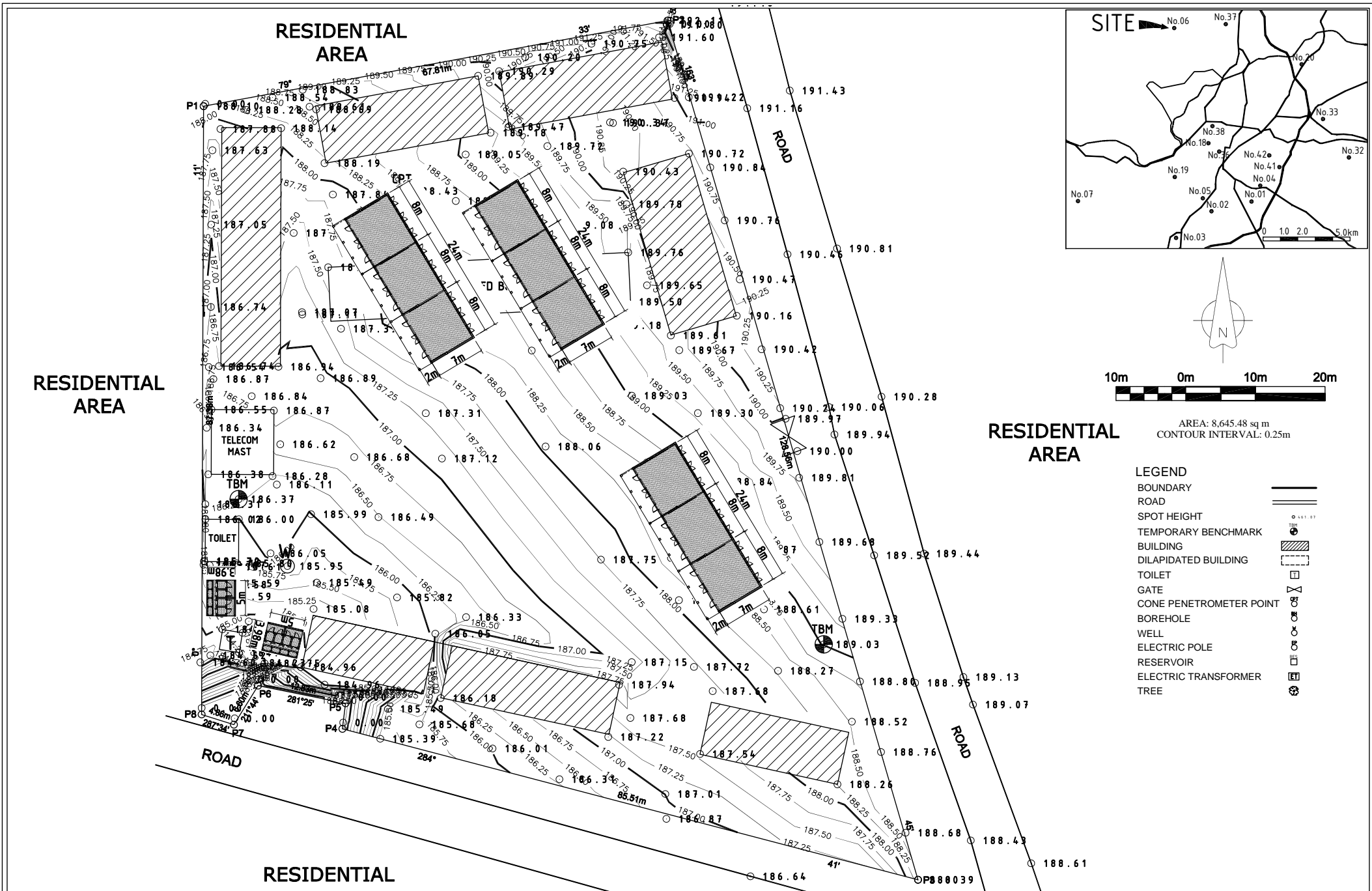
AREA: 5,404.52 sq m  
 CONTOUR INTERVAL: 0.25m

- LEGEND**
- BOUNDARY
  - ROAD
  - SPOT HEIGHT
  - TEMPORARY BENCHMARK
  - BUILDING
  - DILAPIDATED BUILDING
  - TOILET
  - GATE
  - CONE PENETROMETER POINT
  - BOREHOLE
  - WELL
  - ELECTRIC POLE
  - RESERVOIR
  - ELECTRIC TRANSFORMER
  - TREE

VILLAGE SETTLEMENT

|   |        |   |   |                            |                          |                   |                         |
|---|--------|---|---|----------------------------|--------------------------|-------------------|-------------------------|
| PROJECT<br>The Project for Construction of Classrooms for Primary Schools in OYO State in The Federal Republic of Nigeria | CLIENT | CONSULTANTS<br><b>yec</b> YACHIYO ENGINEERING CO., LTD.<br>TOKYO, JAPAN | TITLE LOCATION PLAN OF P30-N34 COMMUNITY BASIC SCHOOL<br>KEEWO, SURULERE LGEA OYO STATE |                            |                          |                   | DRG NO:<br>A 02 P30-N34 |
|   |        |   | APPROVED BY:<br>N. MINAMI   | CHECKED BY:<br>T. KURUMADA | DESIGNED BY:<br>K. OHARA | DATE:<br>AUG.2014 | SCALE:<br>1:500         |





AREA: 8,645.48 sq m  
CONTOUR INTERVAL: 0.25m

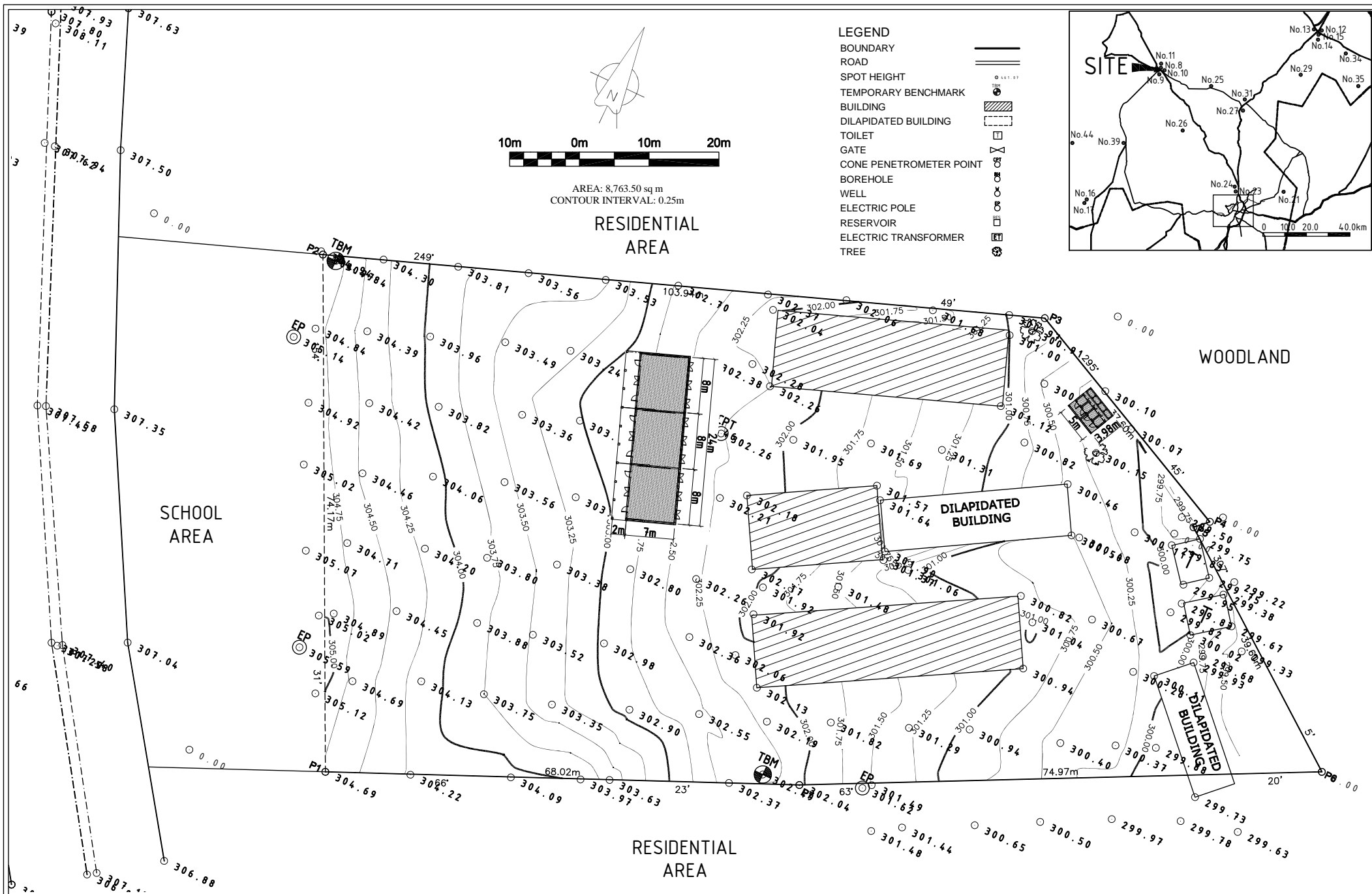
RESIDENTIAL AREA

- LEGEND**
- BOUNDARY
  - ROAD
  - SPOT HEIGHT
  - TEMPORARY BENCHMARK
  - BUILDING
  - DILAPIDATED BUILDING
  - TOILET
  - GATE
  - CONE PENETROMETER POINT
  - BOREHOLE
  - WELL
  - ELECTRIC POLE
  - RESERVOIR
  - ELECTRIC TRANSFORMER
  - TREE

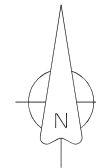
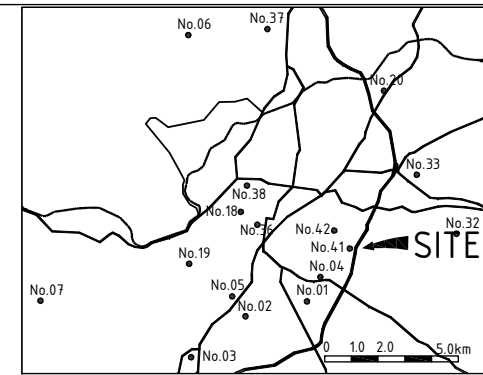
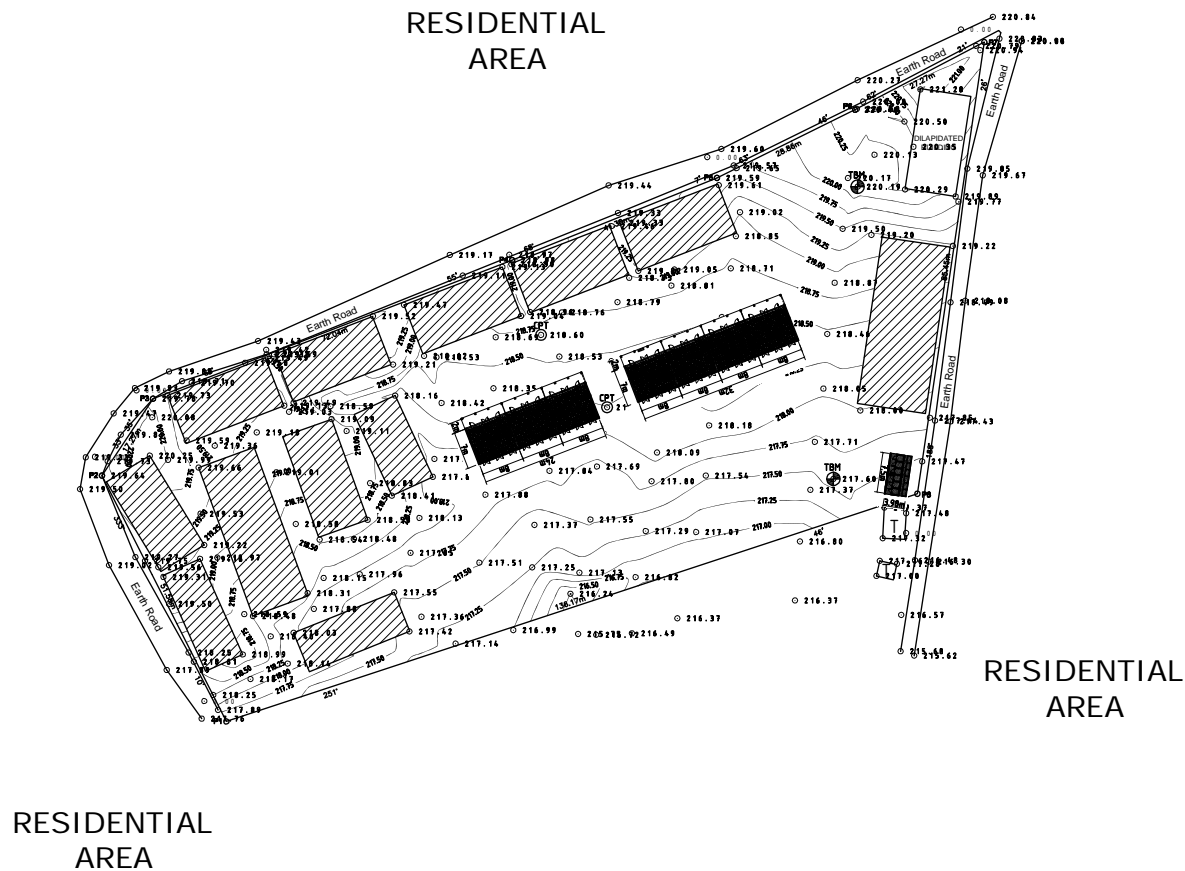
RESIDENTIAL AREA

RESIDENTIAL

|   |        |   |   |                            |                          |                   |                        |
|---|--------|---|---|----------------------------|--------------------------|-------------------|------------------------|
| PROJECT<br>The Project for Construction of Classrooms<br>for Primary Schools in OYO State<br>in The Federal Republic of Nigeria | CLIENT | CONSULTANTS<br><b>yec</b> YACHIYO ENGINEERING CO., LTD.<br>TOKYO, JAPAN | TITLE LOCATION PLAN OF P31-N6 ST. PETER'S PRIMARY SCHOOL<br>APETE, IDO LGEA OYO STATE |                            |                          |                   | DRG NO:<br>A 02 P31-N6 |
|   |        |   | APPROVED BY:<br>N. MINAMI   | CHECKED BY:<br>T. KURUMADA | DESIGNED BY:<br>K. OHARA | DATE:<br>AUG.2014 | SCALE:<br>1:500        |



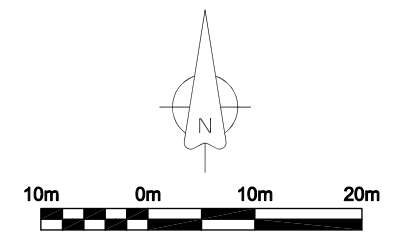
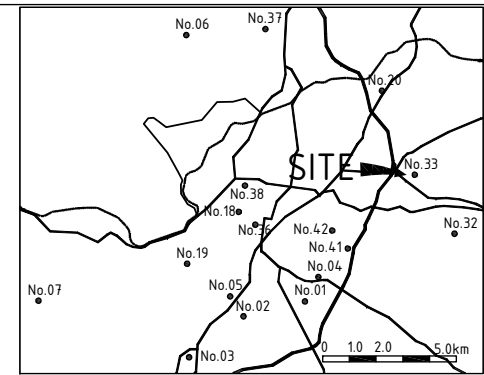
|   |        |   |  |                            |                          |                   |                         |
|---|--------|---|--|----------------------------|--------------------------|-------------------|-------------------------|
| PROJECT<br>The Project for Construction of Classrooms<br>for Primary Schools in OYO State<br>in The Federal Republic of Nigeria | CLIENT | CONSULTANTS<br><b>yec</b> YACHIYO ENGINEERING CO., LTD.<br>TOKYO, JAPAN | TITLE LOCATION PLAN OF P32-N10 ARMY CHILDREN PRIMARY SCHOOL<br>ISEYIN LGEA OYO STATE |                            |                          |                   | DRG NO:<br>A 02 P32-N10 |
|   |        |   | APPROVED BY:<br>N. MINAMI  | CHECKED BY:<br>T. KURUMADA | DESIGNED BY:<br>K. OHARA | DATE:<br>AUG.2014 | SCALE:<br>1:500         |



AREA = 10,407.02 sq m  
CONTOUR INTERVAL: 0.25m

| LEGEND                  |          |
|-------------------------|----------|
| BOUNDARY                | ———      |
| ROAD                    | ====     |
| SPOT HEIGHT             | ○ 441.57 |
| TEMPORARY BENCHMARK     | ⊕        |
| BUILDING                | ▨        |
| DILAPIDATED BUILDING    | ▤        |
| TOILET                  | ⊠        |
| GATE                    | ⊗        |
| CONE PENETROMETER POINT | ⊙        |
| BOREHOLE                | ⊖        |
| WELL                    | ⊕        |
| ELECTRIC POLE           | ⊕        |
| RESERVOIR               | ⊠        |
| ELECTRIC TRANSFORMER    | ⊠        |
| TREE                    | ⊗        |

|   |        |   |  |                             |                           |                    |                          |
|---|--------|---|--|-----------------------------|---------------------------|--------------------|--------------------------|
| PROJECT<br>The Project for Construction of Classrooms<br>for Primary Schools in OYO State<br>in The Federal Republic of Nigeria | CLIENT | CONSULTANTS<br><b>yec</b> YACHIYO ENGINEERING CO., LTD.<br>TOKYO, JAPAN | TITLE LOCATION PLAN OF P34-N41 ISLAMIC MISSION PRIMARY SCHOOL 1 & 2<br>AGUGU, IBADAN NORTH EAST LGEA OYO STATE |                             |                           |                    | DRG NO :<br>A 02 P34-N41 |
|   |        |   | APPROVED BY :<br>N. MINAMI   | CHECKED BY :<br>T. KURUMADA | DESIGNED BY :<br>K. OHARA | DATE :<br>AUG.2014 | SCALE :<br>1:1000        |





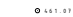


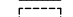
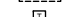
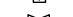
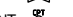






AREA: 5256.16 sq m  
 CONTOUR INTERVAL: 0.25m

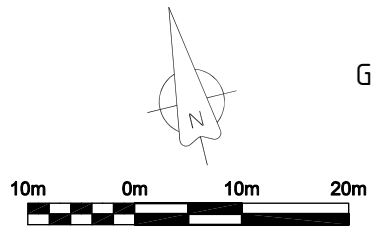
**LEGEND**

|                         |  |
|-------------------------|--|
| BOUNDARY                |  |
| ROAD                    |  |
| SPOT HEIGHT             |  |
| TEMPORARY BENCHMARK     |  |
| BUILDING                |  |
| DILAPIDATED BUILDING    |  |
| TOILET                  |  |
| GATE                    |  |
| CONE PENETROMETER POINT |  |
| BOREHOLE                |  |
| WELL                    |  |
| ELECTRIC POLE           |  |
| RESERVOIR               |  |
| ELECTRIC TRANSFORMER    |  |
| TREE                    |  |

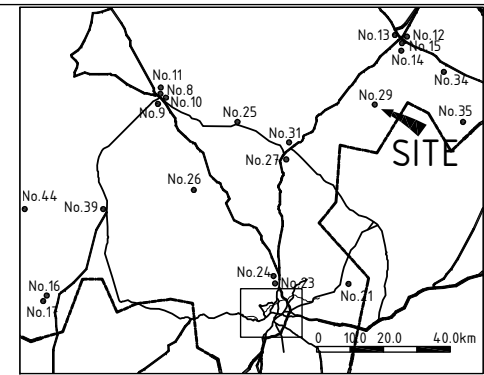
|   |        |   |   |                            |                          |                   |                         |
|---|--------|---|---|----------------------------|--------------------------|-------------------|-------------------------|
| PROJECT<br>The Project for Construction of Classrooms<br>for Primary Schools in OYO State<br>in The Federal Republic of Nigeria | CLIENT | CONSULTANTS<br><b>yec</b> YACHIYO ENGINEERING CO., LTD.<br>TOKYO, JAPAN | TITLE LOCATION PLAN OF P35-N33 C.P.S. I<br>AYEPE, EGBEDA LGEA OYO STATE |                            |                          |                   | DRG NO:<br>A 02 P35-N33 |
|   |        |   | APPROVED BY:<br>N. MINAMI   | CHECKED BY:<br>T. KURUMADA | DESIGNED BY:<br>K. OHARA | DATE:<br>AUG.2014 | SCALE:<br>1:500         |

**LEGEND**

- BOUNDARY 
- ROAD 
- SPOT HEIGHT 
- TEMPORARY BENCHMARK 
- BUILDING 
- DILAPIDATED BUILDING 
- TOILET 
- GATE 
- CONE PENETROMETER POINT 
- BOREHOLE 
- WELL 
- ELECTRIC POLE 
- RESERVOIR 
- ELECTRIC TRANSFORMER 
- TREE 



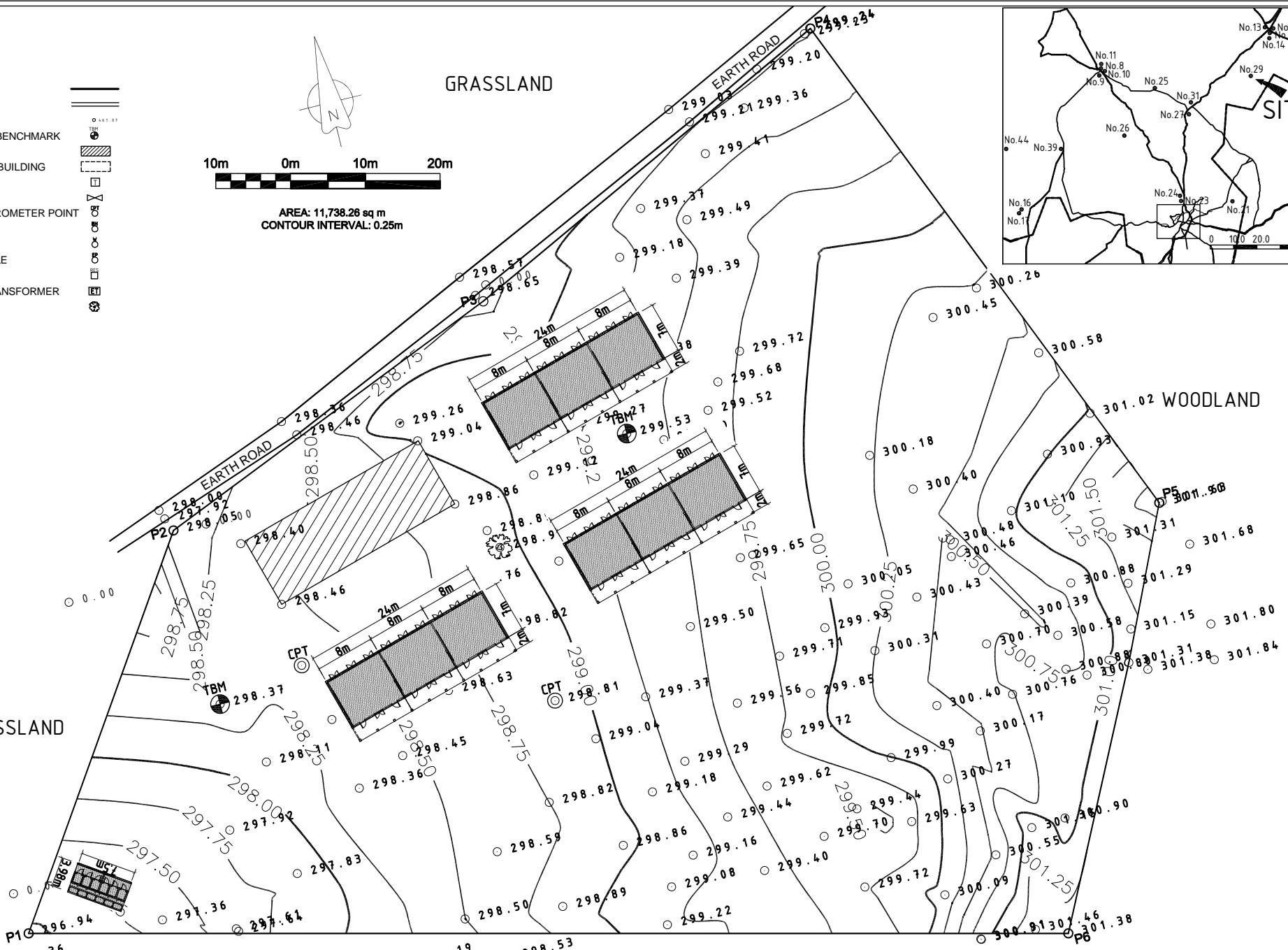
AREA: 11,738.26 sq m  
CONTOUR INTERVAL: 0.25m



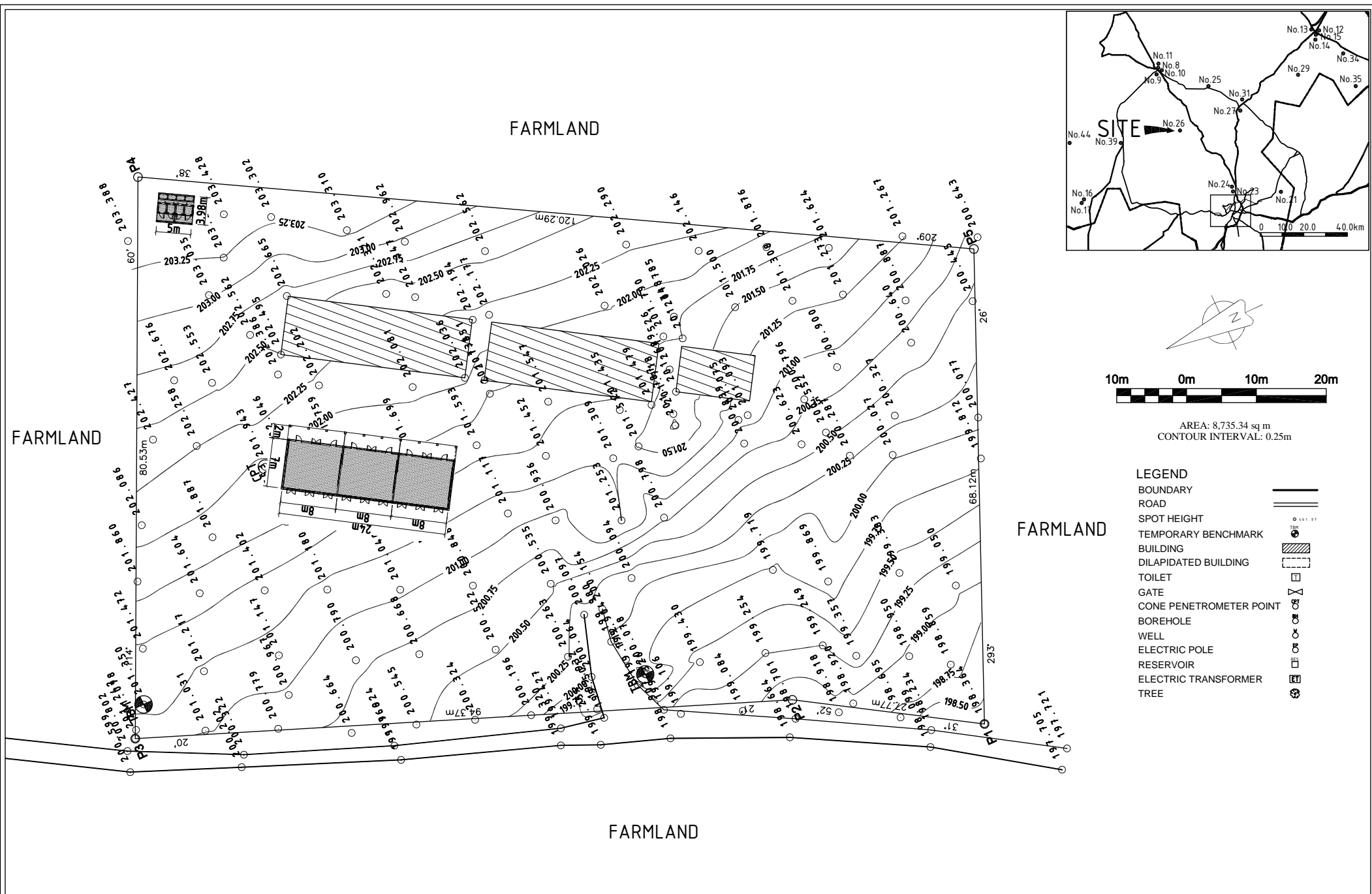
GRASSLAND

GRASSLAND

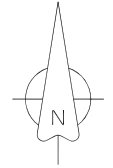
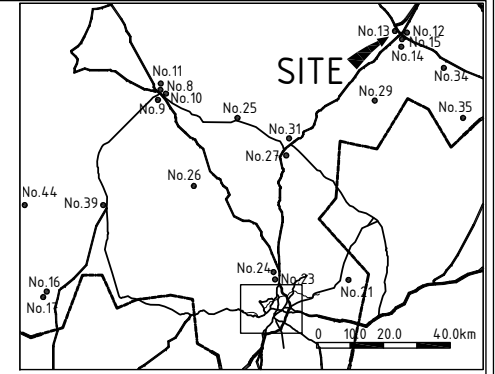
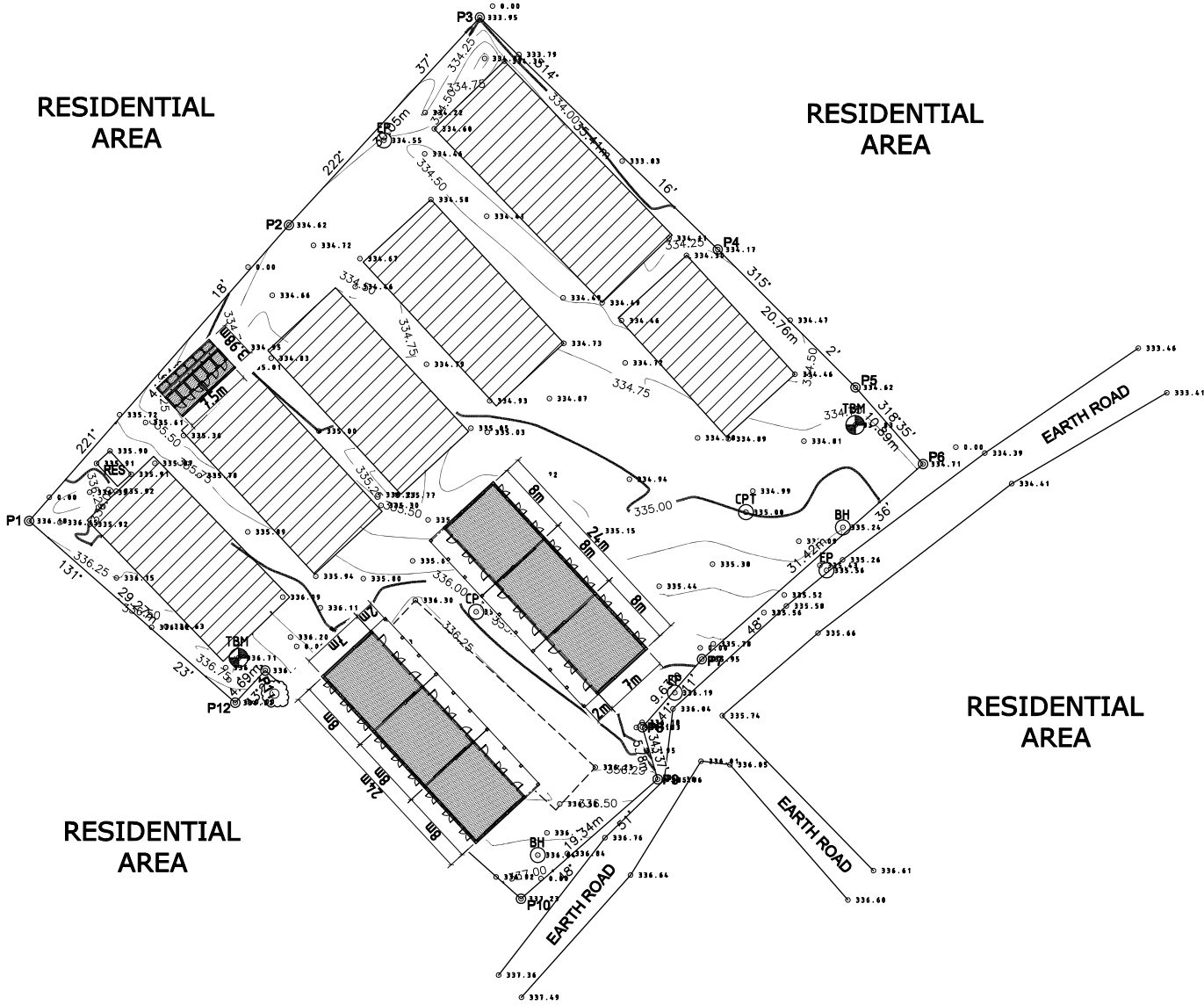
WOODLAND



|  |               |   |  |                                       |                                     |                              |                            |
|--|---------------|---|--|---------------------------------------|-------------------------------------|------------------------------|----------------------------|
| <p>PROJECT</p> <p>The Project for Construction of Classrooms for Primary Schools in OYO State in The Federal Republic of Nigeria</p> | <p>CLIENT</p> | <p>CONSULTANTS</p> <p><b>YEC</b> YACHIYO ENGINEERING CO., LTD.<br/>TOKYO, JAPAN</p> | <p>TITLE</p> <p>LOCATION PLAN OF P36-N29 BAPTIST PRIMARY SCHOOL II OTAMOKUN, OGO OLUWA LGEEA OYO STATE</p> | <p>DRG NO:</p> <p>A 02 P36-N29</p>    |                                     |                              |                            |
|  |               |   | <p>APPROVED BY:</p> <p>N. MINAMI</p>   | <p>CHECKED BY:</p> <p>T. KURUMADA</p> | <p>DESIGNED BY:</p> <p>K. OHARA</p> | <p>DATE:</p> <p>AUG.2014</p> | <p>SCALE:</p> <p>1:500</p> |



|   |        |   |  |                             |                           |                    |                          |
|---|--------|---|--|-----------------------------|---------------------------|--------------------|--------------------------|
| PROJECT<br>The Project for Construction of Classrooms<br>for Primary Schools in OYO State<br>in The Federal Republic of Nigeria | CLIENT | CONSULTANTS<br><b>yec</b> YACHIYO ENGINEERING CO., LTD.<br>TOKYO, JAPAN | TITLE LOCATION PLAN OF P37-N26 COMMUNITY PRIMARY SCHOOL<br>OGUNKEYE, OYO WEST LGEA OYO STATE |                             |                           |                    | DRG NO :<br>A 02 P37-N26 |
|   |        |   | APPROVED BY :<br>N. MINAMI   | CHECKED BY :<br>T. KURUMADA | DESIGNED BY :<br>K. OHARA | DATE :<br>AUG.2014 | SCALE :<br>1:500         |

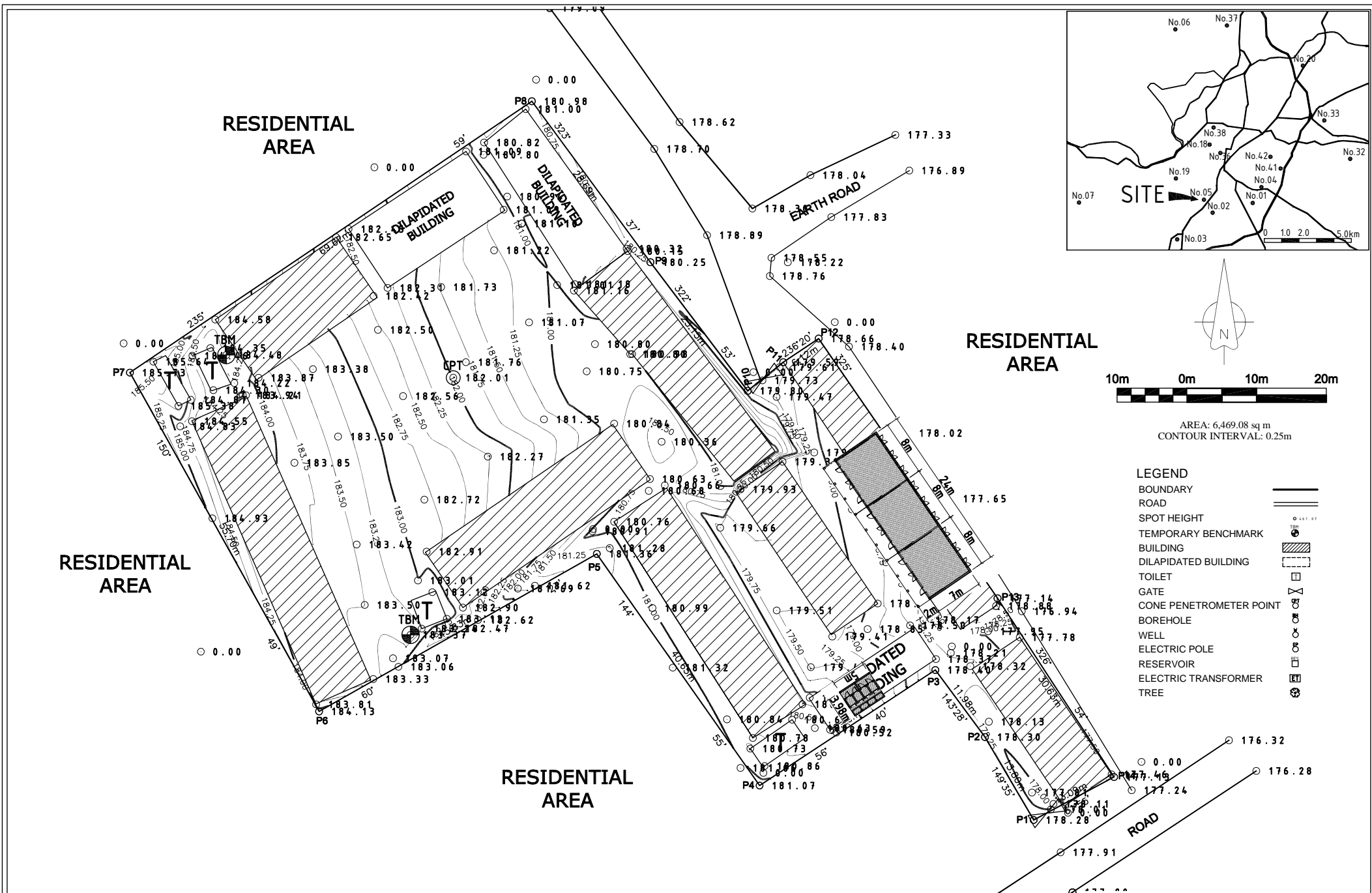


AREA: 4,443.51 sq m  
 CONTOUR INTERVAL: 0.25m

**LEGEND**

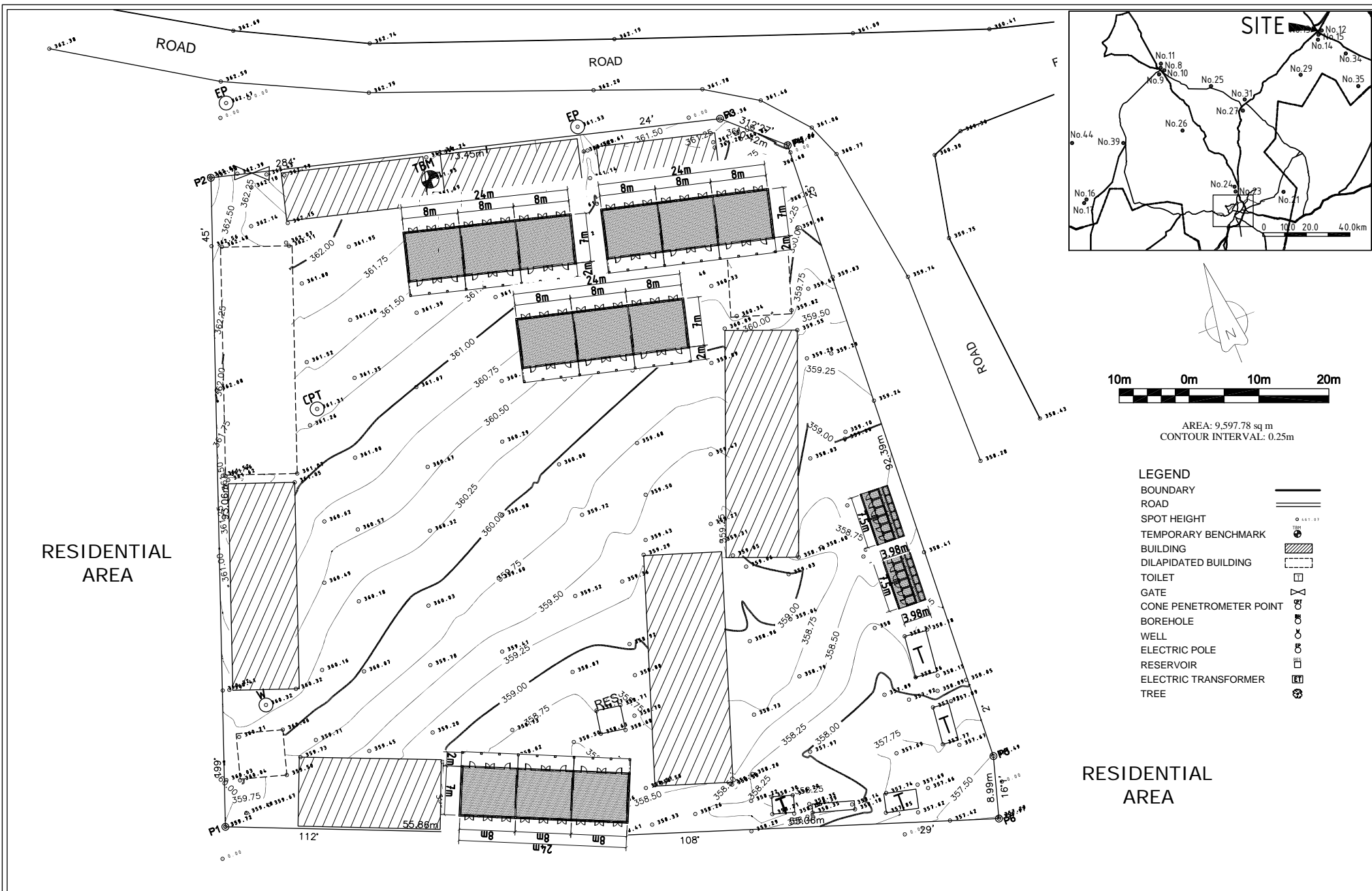
|                         |          |
|-------------------------|----------|
| BOUNDARY                | ———      |
| ROAD                    | ====     |
| SPOT HEIGHT             | ○ 441.07 |
| TEMPORARY BENCHMARK     | ⊕        |
| BUILDING                | ▨        |
| DILAPIDATED BUILDING    | - - - -  |
| TOILET                  | □        |
| GATE                    | ⌞        |
| CONE PENETROMETER POINT | ⊕        |
| BOREHOLE                | ⊙        |
| WELL                    | ⊕        |
| ELECTRIC POLE           | ⊕        |
| RESERVOIR               | ⊕        |
| ELECTRIC TRANSFORMER    | ⊕        |
| TREE                    | ⊕        |

|   |        |   |  |                            |                          |                   |                         |
|---|--------|---|--|----------------------------|--------------------------|-------------------|-------------------------|
| PROJECT<br>The Project for Construction of Classrooms for Primary Schools in OYO State in The Federal Republic of Nigeria | CLIENT | CONSULTANTS<br><b>yec</b> YACHIYO ENGINEERING CO., LTD.<br>TOKYO, JAPAN | TITLE LOCATION PLAN OF P39-N13 AREAGO BASIC PRIMARY SCHOOL<br>OGBOMOSO NORTH LG/EA OYO STATE |                            |                          |                   | DRG NO:<br>A 02 P39-N13 |
|   |        |   | APPROVED BY:<br>N. MINAMI  | CHECKED BY:<br>T. KURUMADA | DESIGNED BY:<br>K. OHARA | DATE:<br>AUG.2014 | SCALE:<br>1:500         |



|   |        |   |   |                            |                          |                   |                        |
|---|--------|---|---|----------------------------|--------------------------|-------------------|------------------------|
| PROJECT<br>The Project for Construction of Classrooms<br>for Primary Schools in OYO State<br>in The Federal Republic of Nigeria | CLIENT | CONSULTANTS<br><b>yec</b> YACHIYO ENGINEERING CO., LTD.<br>TOKYO, JAPAN | TITLE LOCATION PLAN OF P40-N5 I.M.G. PRIMARY SCHOOL<br>LAGOS BYE PASS, IBADAN SOUTH WEST LGEA OYO STATE |                            |                          |                   | DRG NO:<br>A 02 P40-N5 |
|   |        |   | APPROVED BY:<br>N. MINAMI   | CHECKED BY:<br>T. KURUMADA | DESIGNED BY:<br>K. OHARA | DATE:<br>AUG.2014 | SCALE:<br>1:500        |





RESIDENTIAL AREA

RESIDENTIAL AREA



AREA: 9,597.78 sq m  
CONTOUR INTERVAL: 0.25m

LEGEND

- BOUNDARY
- ROAD
- SPOT HEIGHT
- TEMPORARY BENCHMARK
- BUILDING
- DILAPIDATED BUILDING
- TOILET
- GATE
- CONE PENETROMETER POINT
- BOREHOLE
- WELL
- ELECTRIC POLE
- RESERVOIR
- ELECTRIC TRANSFORMER
- TREE

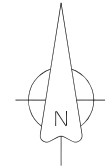
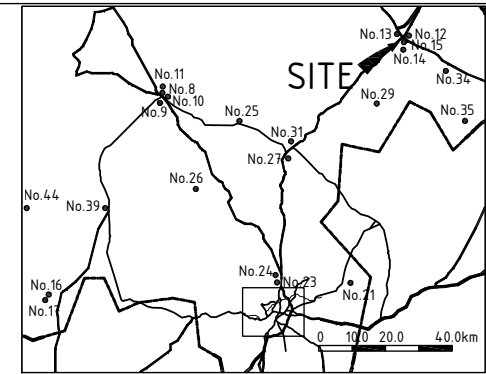
|   |        |   |   |                            |                          |                   |                         |
|---|--------|---|---|----------------------------|--------------------------|-------------------|-------------------------|
| PROJECT<br>The Project for Construction of Classrooms for Primary Schools in OYO State in The Federal Republic of Nigeria | CLIENT | CONSULTANTS<br><b>YEC</b> YACHIYO ENGINEERING CO., LTD.<br>TOKYO, JAPAN | TITLE LOCATION PLAN OF P41-N12 ST. DAVID'S PRIMARY SCHOOL<br>AGBOYIN, OGBOMOSO NORTH LGEA OYO STATE |                            |                          |                   | DRG NO:<br>A 02 P41-N12 |
|   |        |   | APPROVED BY:<br>N. MINAMI   | CHECKED BY:<br>T. KURUMADA | DESIGNED BY:<br>K. OHARA | DATE:<br>AUG.2014 | SCALE:<br>1:500         |

RESIDENTIAL AREA

RESIDENTIAL AREA

RESIDENTIAL AREA

RESIDENTIAL AREA

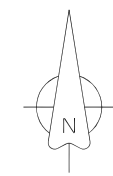
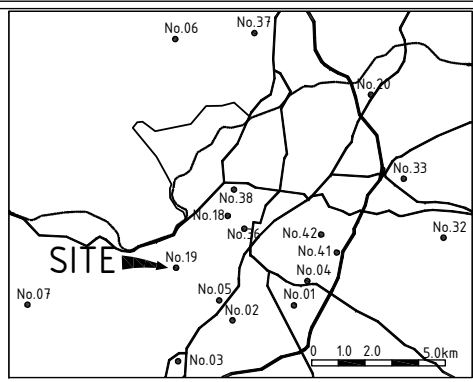
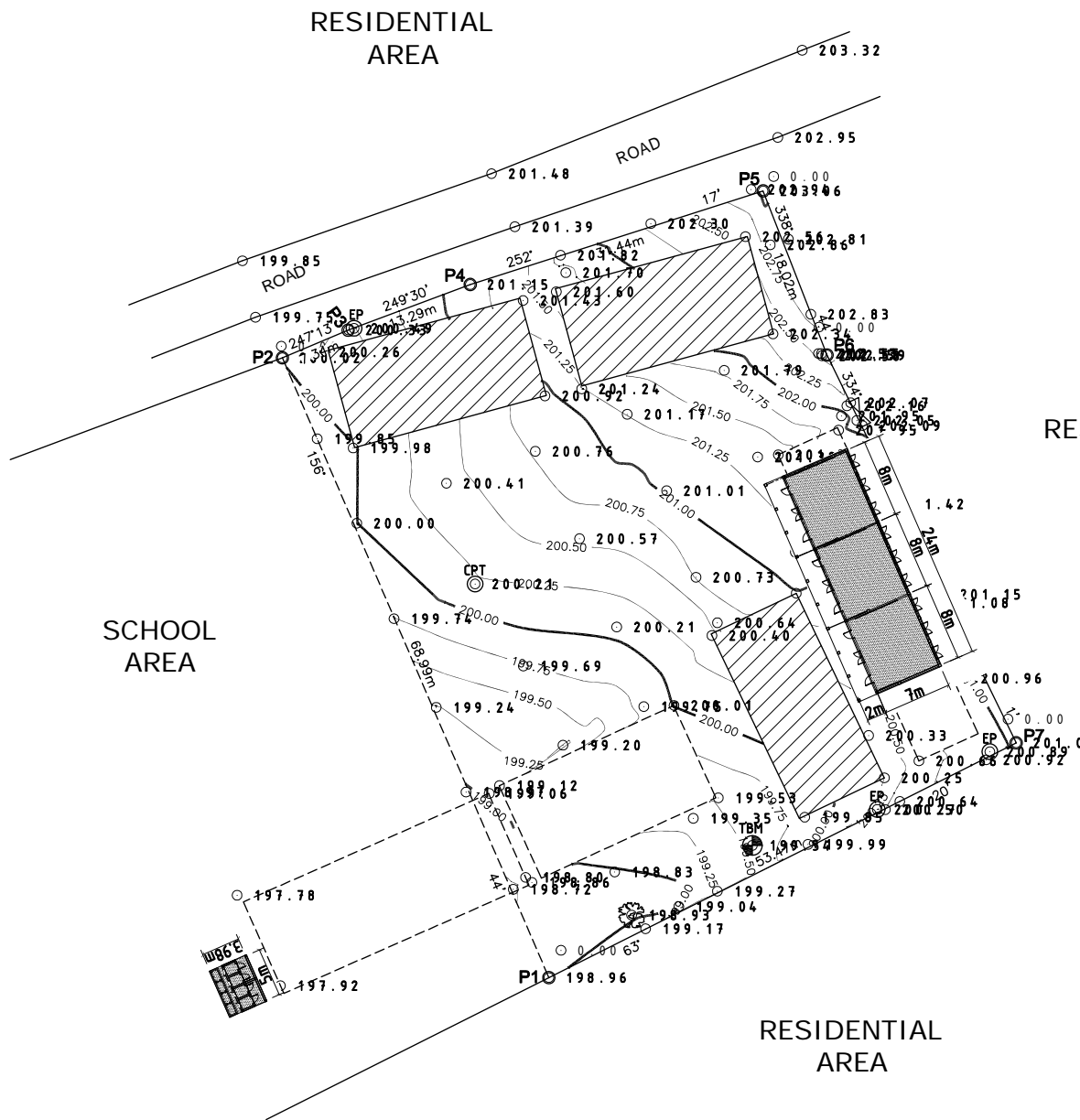


AREA: 4155.87 sq m  
CONTOUR INTERVAL: 0.25m

LEGEND

- BOUNDARY
- ROAD
- SPOT HEIGHT
- TEMPORARY BENCHMARK
- BUILDING
- DILAPIDATED BUILDING
- TOILET
- GATE
- CONE PENETROMETER POINT
- BOREHOLE
- WELL
- ELECTRIC POLE
- RESERVOIR
- ELECTRIC TRANSFORMER
- TREE

|  |               |   |   |                                     |
|--|---------------|---|---|-------------------------------------|
| <p>PROJECT</p> <p>The Project for Construction of Classrooms for Primary Schools in OYO State in The Federal Republic of Nigeria</p> | <p>CLIENT</p> | <p>CONSULTANTS</p> <p><b>yec</b> YACHIYO ENGINEERING CO., LTD.<br/>TOKYO, JAPAN</p> | <p>TITLE</p> <p>LOCATION PLAN OF P42-N15 MOLETE D.C. PRIMARY SCHOOL III<br/>OGBOMOSO SOUTH LGEA OYO STATE</p> | <p>DRG NO:</p> <p>A 02 P42-N15</p>  |
|  |               | <p>APPROVED BY:</p> <p>N. MINAMI</p>  | <p>CHECKED BY:</p> <p>T. KURUMADA</p>   | <p>DESIGNED BY:</p> <p>K. OHARA</p> |
|  |               |   | <p>DATE:</p> <p>AUG.2014</p>  | <p>SCALE:</p> <p>1:500</p>          |



AREA: 3,438.60 sq m  
 CONTOUR INTERVAL: 0.25m

- LEGEND**
- BOUNDARY ———
  - ROAD = = = =
  - SPOT HEIGHT ○ 441.07
  - TEMPORARY BENCHMARK ○ 10M
  - BUILDING ▨
  - DILAPIDATED BUILDING - - - -
  - TOILET □
  - GATE ⊗
  - CONE PENETROMETER POINT ⊙
  - BOREHOLE ○
  - WELL ○
  - ELECTRIC POLE ○
  - RESERVOIR □
  - ELECTRIC TRANSFORMER □
  - TREE ○

|   |        |   |   |                            |                          |                   |                         |
|---|--------|---|---|----------------------------|--------------------------|-------------------|-------------------------|
| PROJECT<br>The Project for Construction of Classrooms<br>for Primary Schools in OYO State<br>in The Federal Republic of Nigeria | CLIENT | CONSULTANTS<br><b>yec</b> YACHIYO ENGINEERING CO., LTD.<br>TOKYO, JAPAN | TITLE LOCATION PLAN OF P44-N19 I.M.G. PRIMARY SCHOOL<br>JOYCEB, OKE ADO, IBADAN SOUTH WEST LGEA OYO STATE |                            |                          |                   | DRG NO:<br>A 02 P44-N19 |
|   |        |   | APPROVED BY:<br>N. MINAMI   | CHECKED BY:<br>T. KURUMADA | DESIGNED BY:<br>K. OHARA | DATE:<br>AUG.2014 | SCALE:<br>1:500         |