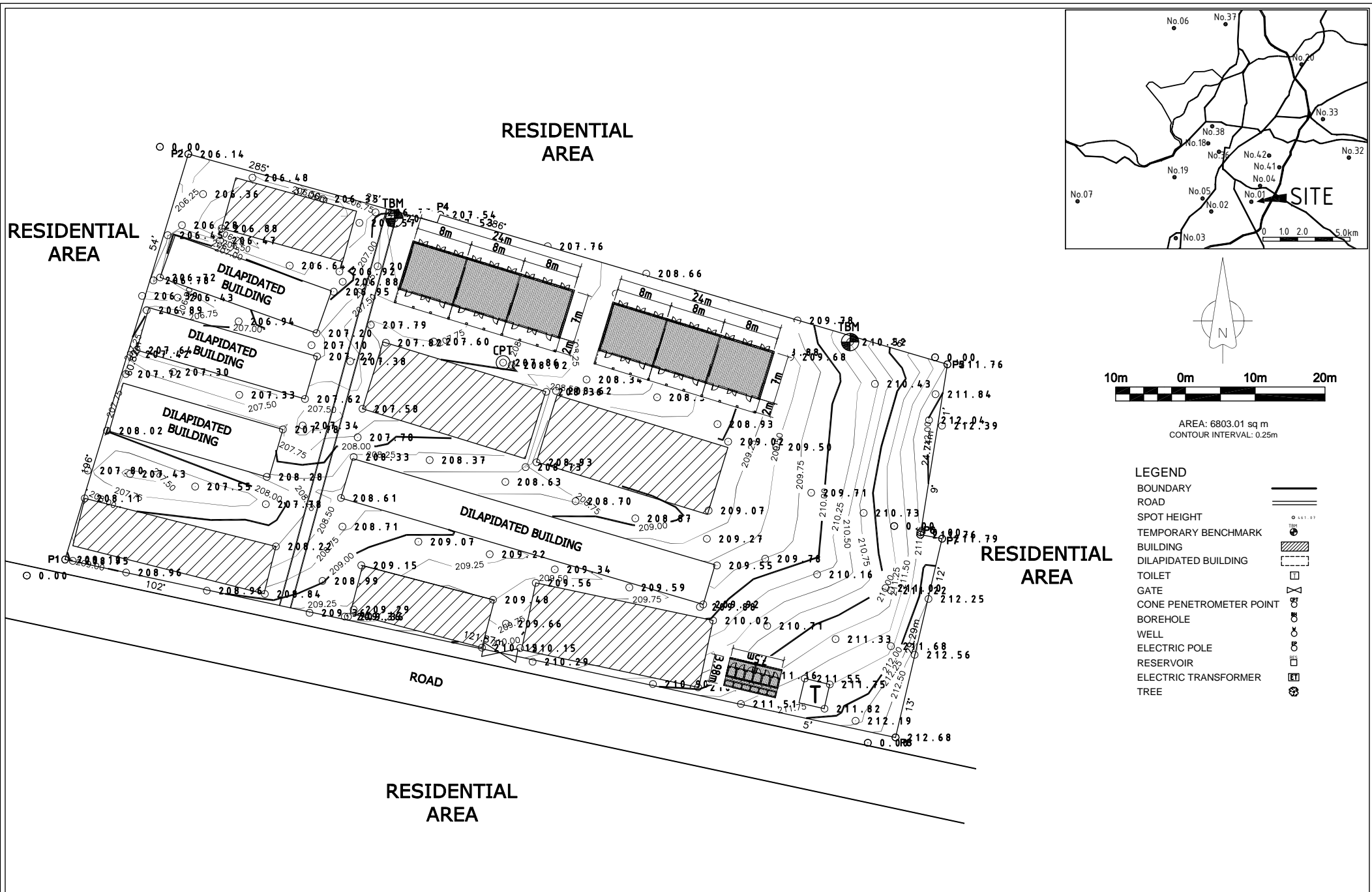
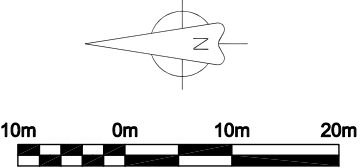
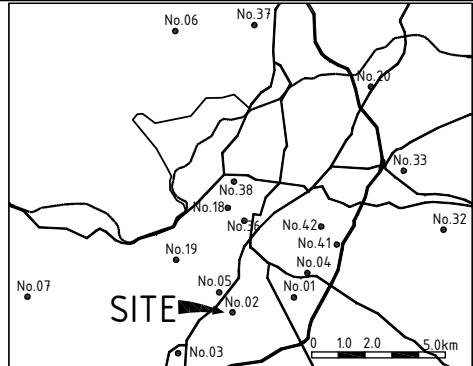
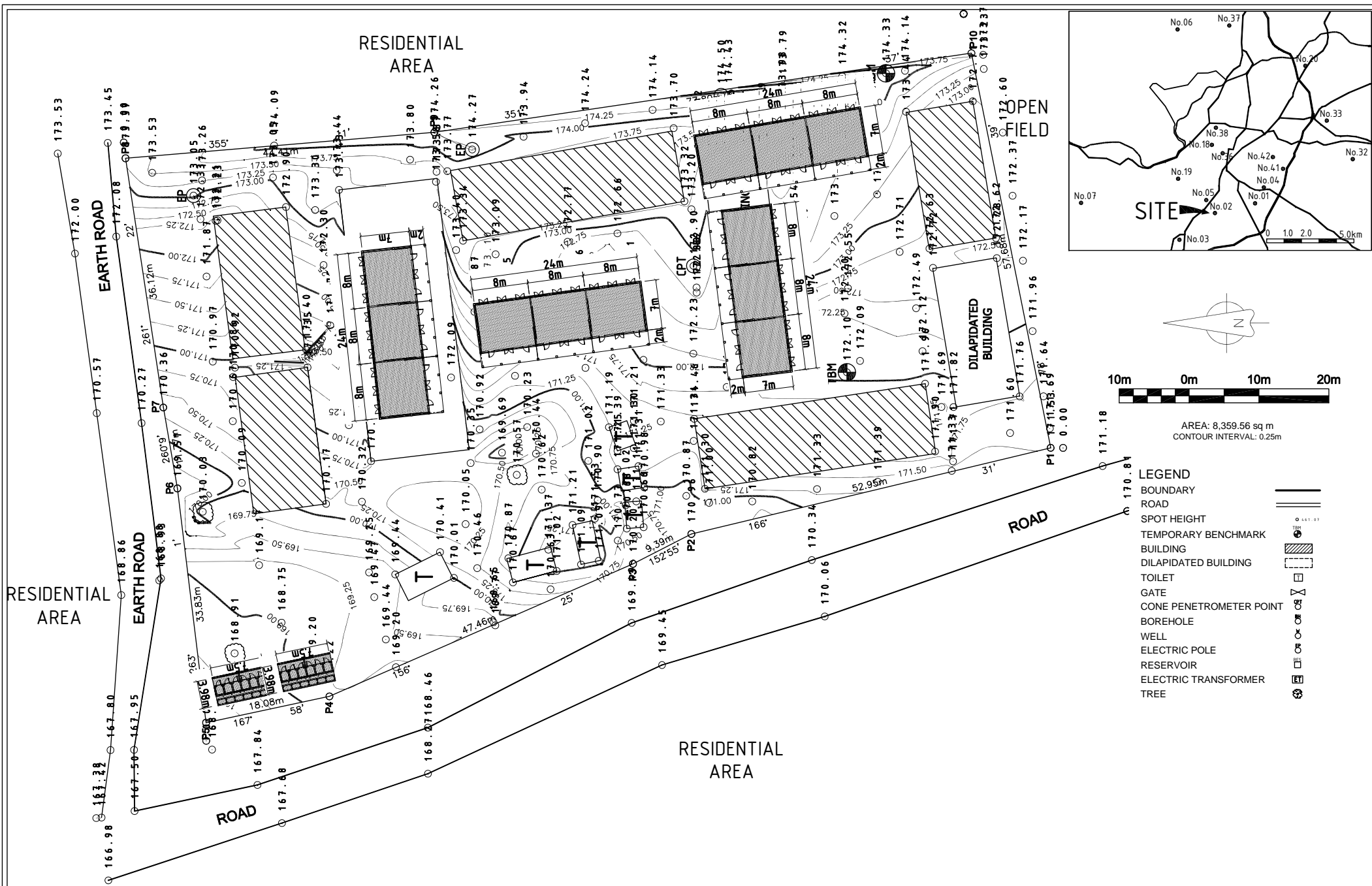


## 資料-7 配置計画図



- LEGEND**
- BOUNDARY
  - ROAD
  - SPOT HEIGHT
  - TEMPORARY BENCHMARK
  - BUILDING
  - DILAPIDATED BUILDING
  - TOILET
  - GATE
  - CONE PENETROMETER POINT
  - BOREHOLE
  - WELL
  - ELECTRIC POLE
  - RESERVOIR
  - ELECTRIC TRANSFORMER
  - TREE

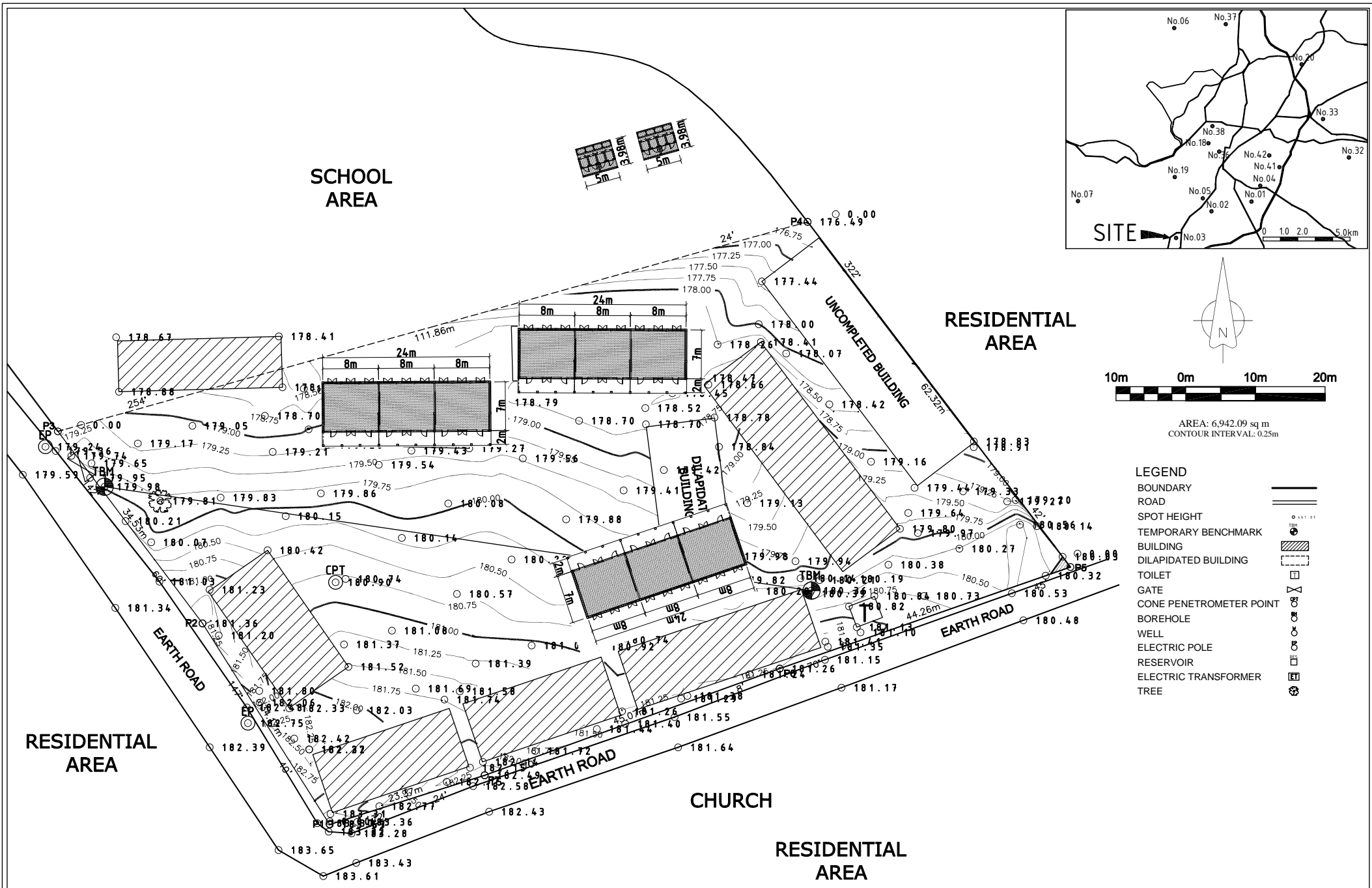
PROJECT The Project for Construction of Classrooms for Primary Schools in OYO State in The Federal Republic of Nigeria	CLIENT	CONSULTANTS <b>yec</b> YACHIYO ENGINEERING CO., LTD. TOKYO, JAPAN	TITLE LOCATION PLAN OF P1-N1 RATIBI MOSLEM PRIMARY SCHOOL ODINJO, IBADAN SOUTH EAST LGEA OYO STATE				DRG NO: A 02 P1-N1
			APPROVED BY: N. MINAMI	CHECKED BY: T. KURUMADA	DESIGNED BY: K. OHARA	DATE: AUG.2014	SCALE: 1:500



AREA: 8,359.56 sq m  
CONTOUR INTERVAL: 0.25m

- LEGEND**
- BOUNDARY
  - ROAD
  - SPOT HEIGHT
  - TEMPORARY BENCHMARK
  - BUILDING
  - DILAPIDATED BUILDING
  - TOILET
  - GATE
  - CONE PENETROMETER POINT
  - BOREHOLE
  - WELL
  - ELECTRIC POLE
  - RESERVOIR
  - ELECTRIC TRANSFORMER
  - TREE

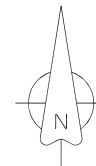
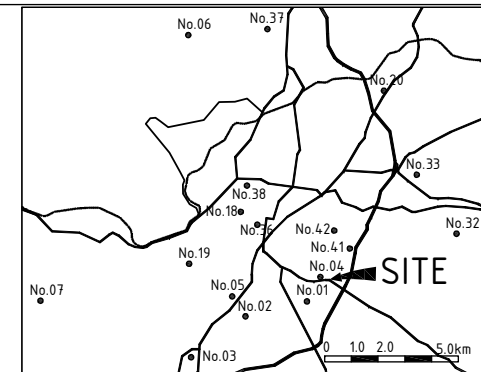
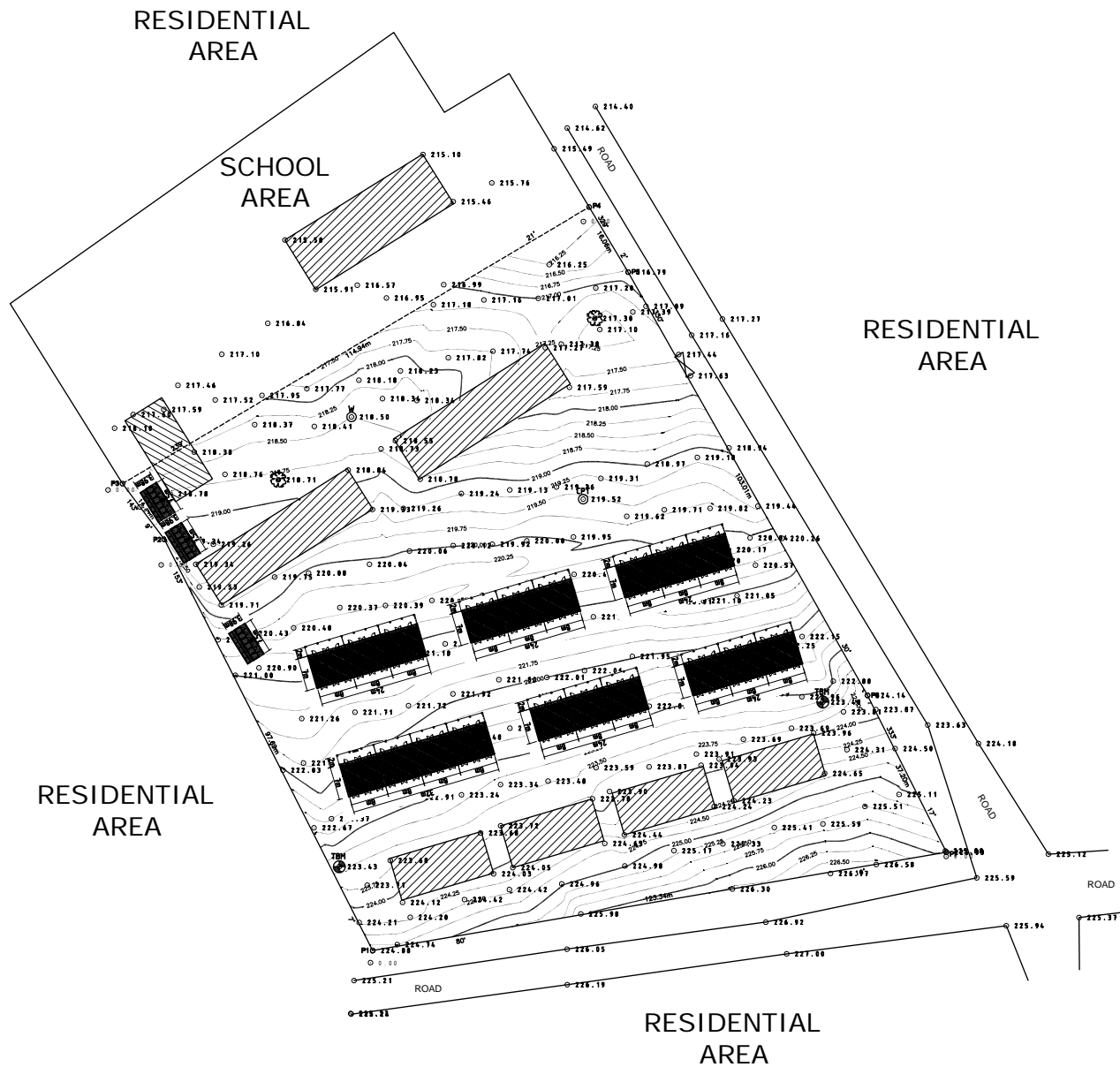
PROJECT The Project for Construction of Classrooms for Primary Schools in OYO State in The Federal Republic of Nigeria	CLIENT	CONSULTANTS <b>YEC</b> YACHIYO ENGINEERING CO., LTD. TOKYO, JAPAN	TITLE LOCATION PLAN OF P2-N2 ST. LUKE DEMONSTRATION SCHOOL MOLETE, IBADAN SOUTH EAST LGEA OYO STATE				DRG NO: A 02 P2-N2
			APPROVED BY: N. MINAMI	CHECKED BY: T. KURUMADA	DESIGNED BY: K. OHARA	DATE: AUG.2014	SCALE: 1:500



AREA: 6,942.09 sq m  
CONTOUR INTERVAL: 0.25m

- LEGEND**
- BOUNDARY
  - ROAD
  - SPOT HEIGHT
  - TEMPORARY BENCHMARK
  - BUILDING
  - DILAPIDATED BUILDING
  - TOILET
  - GATE
  - CONE PENETROMETER POINT
  - BOREHOLE
  - WELL
  - ELECTRIC POLE
  - RESERVOIR
  - ELECTRIC TRANSFORMER
  - TREE

PROJECT The Project for Construction of Classrooms for Primary Schools in OYO State in The Federal Republic of Nigeria	CLIENT	CONSULTANTS <b>YEC</b> YACHIYO ENGINEERING CO., LTD. TOKYO, JAPAN	TITLE LOCATION PLAN OF P3-N3 ST. LEO'S CATHOLIC SCHOOL IBADAN SOUTH EAST LGEA OYO STATE				DRG NO: A 02 P3-N3
			APPROVED BY: N. MINAMI	CHECKED BY: T. KURUMADA	DESIGNED BY: K. OHARA	DATE: AUG.2014	SCALE: 1:500



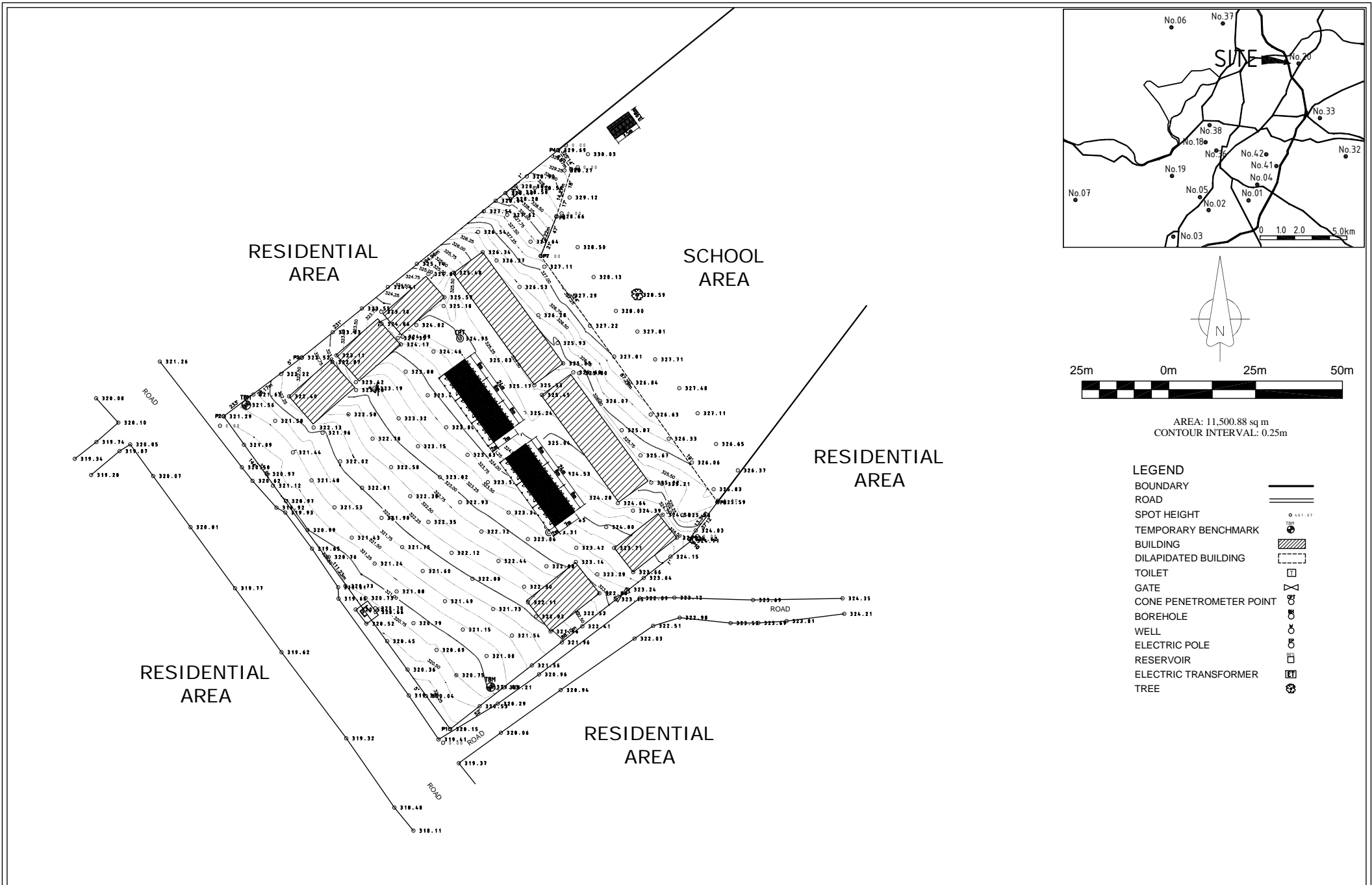
AREA: 15,551.57 sq m  
CONTOUR INTERVAL: 0.25m

**LEGEND**

- BOUNDARY —————
- ROAD =====
- SPOT HEIGHT ○ 441.07
- TEMPORARY BENCHMARK TBM
- BUILDING ▨
- DILAPIDATED BUILDING - - - - -
- TOILET □
- GATE X
- CONE PENETROMETER POINT C.P.P.
- BOREHOLE ○
- WELL ○
- ELECTRIC POLE ○
- RESERVOIR □
- ELECTRIC TRANSFORMER E.T.
- TREE ○

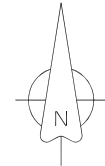
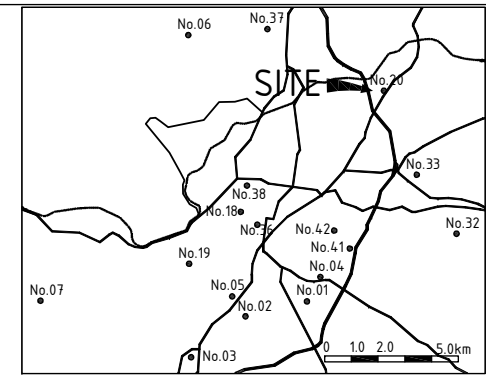
PROJECT The Project for Construction of Classrooms for Primary Schools in OYO State in The Federal Republic of Nigeria	CLIENT	CONSULTANTS  <b>YACHIYO ENGINEERING CO., LTD.</b> TOKYO, JAPAN	TITLE LOCATION PLAN OF P4-N4 I.M.G. PRIMARY SCHOOL OLABADAN, IBADAN SOUTH EAST LGEA OYO STATE				DRG NO : A 02 P4-N4
			APPROVED BY : N. MINAMI	CHECKED BY : T. KURUMADA	DESIGNED BY : K. OHARA	DATE : AUG.2014	SCALE : 1:1000





- LEGEND**
- BOUNDARY
  - ROAD
  - SPOT HEIGHT
  - TEMPORARY BENCHMARK
  - BUILDING
  - DILAPIDATED BUILDING
  - TOILET
  - GATE
  - CONE PENETROMETER POINT
  - BOREHOLE
  - WELL
  - ELECTRIC POLE
  - RESERVOIR
  - ELECTRIC TRANSFORMER
  - TREE

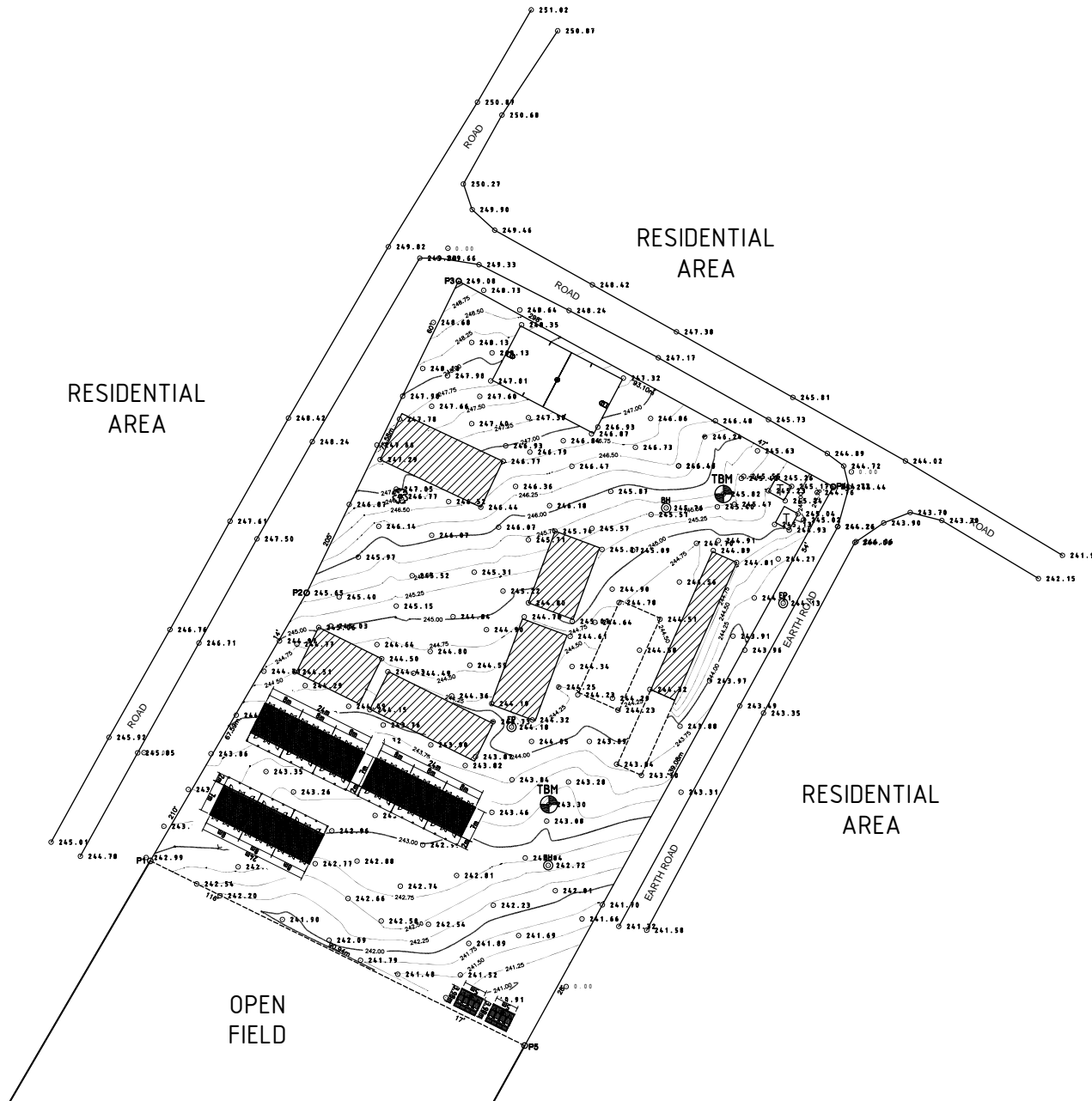
PROJECT The Project for Construction of Classrooms for Primary Schools in OYO State in The Federal Republic of Nigeria	CLIENT	CONSULTANTS <b>yec</b> YACHIYO ENGINEERING CO., LTD. TOKYO, JAPAN	TITLE LOCATION PLAN OF P6-N8 L.A. DEMONSTRATION PRIMARY SCHOOL ISEYIN LGEEA OYO STATE				DRG NO : A 02 P6-N8
			APPROVED BY : N. MINAMI	CHECKED BY : T. KURUMADA	DESIGNED BY : K. OHARA	DATE : AUG.2014	SCALE : 1:1000



AREA: 12,787.20 sq m  
CONTOUR INTERVAL: 0.25m

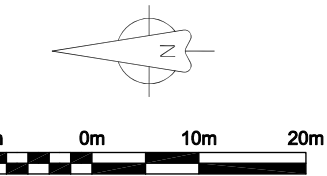
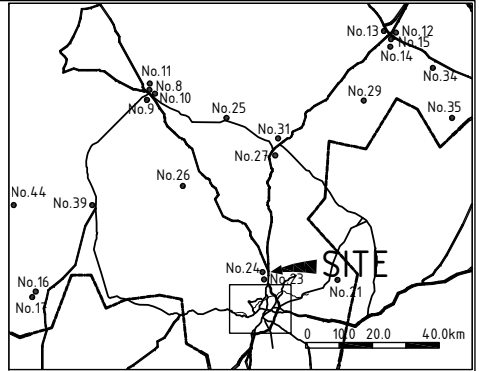
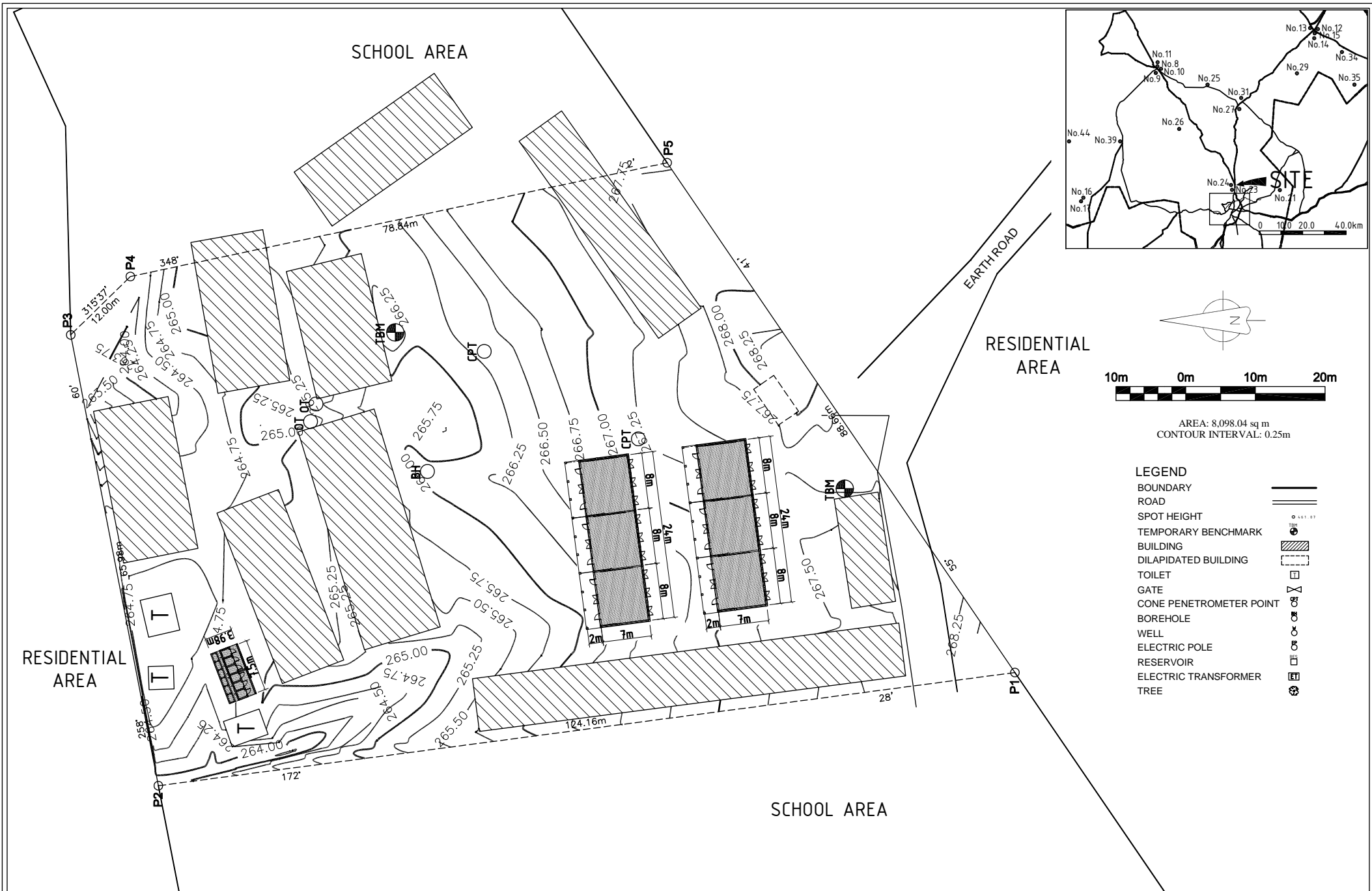
**LEGEND**

- BOUNDARY ———
- ROAD = = = = =
- SPOT HEIGHT ○ 244.57
- TEMPORARY BENCHMARK ⊕
- BUILDING ▨
- DILAPIDATED BUILDING - - - - -
- TOILET □
- GATE ⌂
- CONE PENETROMETER POINT ⊙
- BOREHOLE ⊖
- WELL ⊕
- ELECTRIC POLE ⊖
- RESERVOIR ⊖
- ELECTRIC TRANSFORMER ⊖
- TREE ⊖



PROJECT The Project for Construction of Classrooms for Primary Schools in OYO State in The Federal Republic of Nigeria	CLIENT	CONSULTANTS  	TITLE LOCATION PLAN OF P7-N20 I.D.C. PRIMARY SCHOOL AKOBO, LAGELU LGEA OYO STATE				DRG NO : A 02 P7-N20
			APPROVED BY : N. MINAMI	CHECKED BY : T. KURUMADA	DESIGNED BY : K. OHARA	DATE : AUG.2014	SCALE : 1:1000

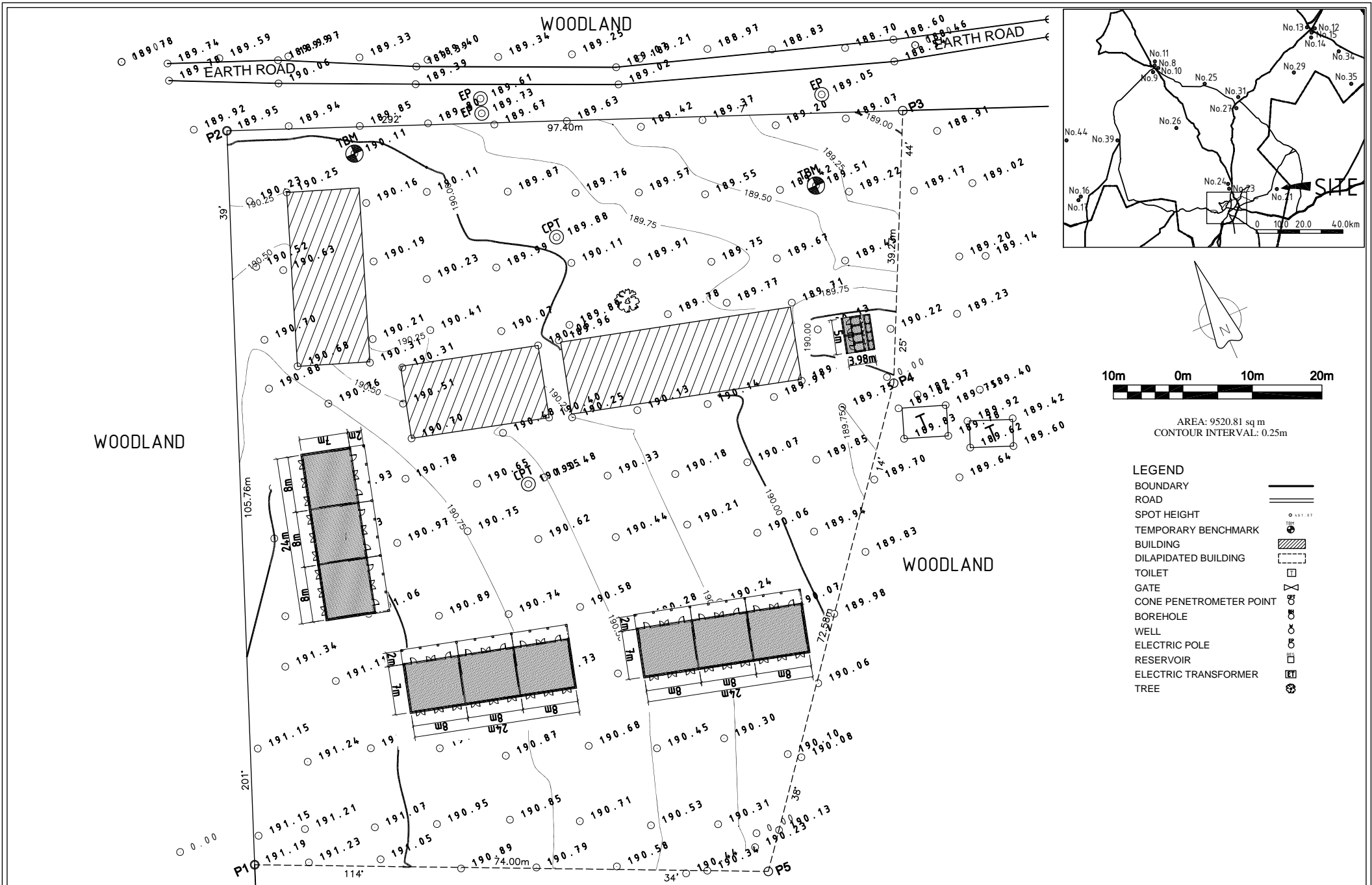




AREA: 8,098.04 sq m  
 CONTOUR INTERVAL: 0.25m

- LEGEND**
- BOUNDARY
  - ROAD
  - SPOT HEIGHT
  - TEMPORARY BENCHMARK
  - BUILDING
  - DILAPIDATED BUILDING
  - TOILET
  - GATE
  - CONE PENETROMETER POINT
  - BOREHOLE
  - WELL
  - ELECTRIC POLE
  - RESERVOIR
  - ELECTRIC TRANSFORMER
  - TREE

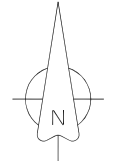
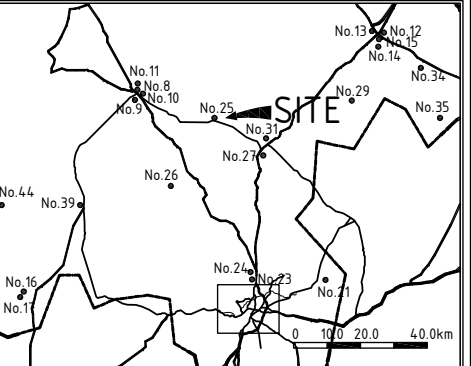
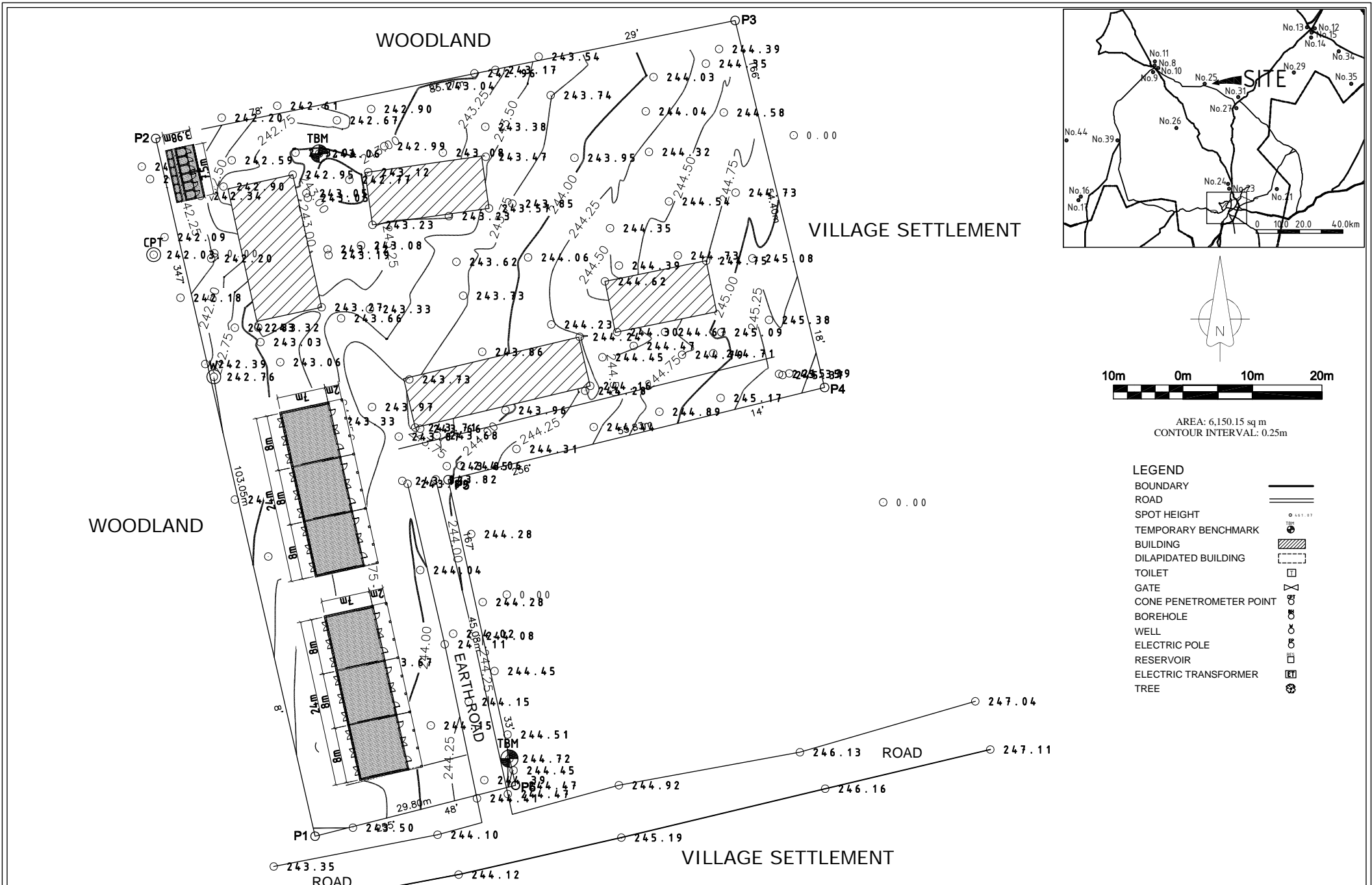
PROJECT The Project for Construction of Classrooms for Primary Schools in OYO State in The Federal Republic of Nigeria	CLIENT	CONSULTANTS <b>YEC</b> YACHIYO ENGINEERING CO., LTD. TOKYO, JAPAN	TITLE LOCATION PLAN OF P8-N24 ISLAMIC MISSION SCHOOL MONIYA, AKINYELE LGEA OYO STATE				DRG NO : A 02 P8-N24
			APPROVED BY : N. MINAMI	CHECKED BY : T. KURUMADA	DESIGNED BY : K. OHARA	DATE : AUG.2014	SCALE : 1:500



AREA: 9520.81 sq m  
 CONTOUR INTERVAL: 0.25m

- LEGEND**
- BOUNDARY
  - ROAD
  - SPOT HEIGHT
  - TEMPORARY BENCHMARK
  - BUILDING
  - DILAPIDATED BUILDING
  - TOILET
  - GATE
  - CONE PENETROMETER POINT
  - BOREHOLE
  - WELL
  - ELECTRIC POLE
  - RESERVOIR
  - ELECTRIC TRANSFORMER
  - TREE

PROJECT The Project for Construction of Classrooms for Primary Schools in OYO State in The Federal Republic of Nigeria	CLIENT	CONSULTANTS <b>YEC</b> YACHIYO ENGINEERING CO., LTD. TOKYO, JAPAN	TITLE LOCATION PLAN OF P9-N21 ST. AUGUSTINE PRIMARY SCHOOL AKINSAWE, LAGELU LGEA OYO STATE				DRG NO: A 02 P9-N21
			APPROVED BY: N. MINAMI	CHECKED BY: T. KURUMADA	DESIGNED BY: K. OHARA	DATE: AUG.2014	SCALE: 1:500



AREA: 6,150.15 sq m  
CONTOUR INTERVAL: 0.25m

**LEGEND**

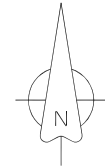
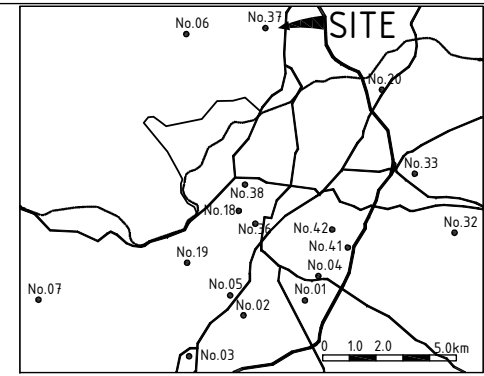
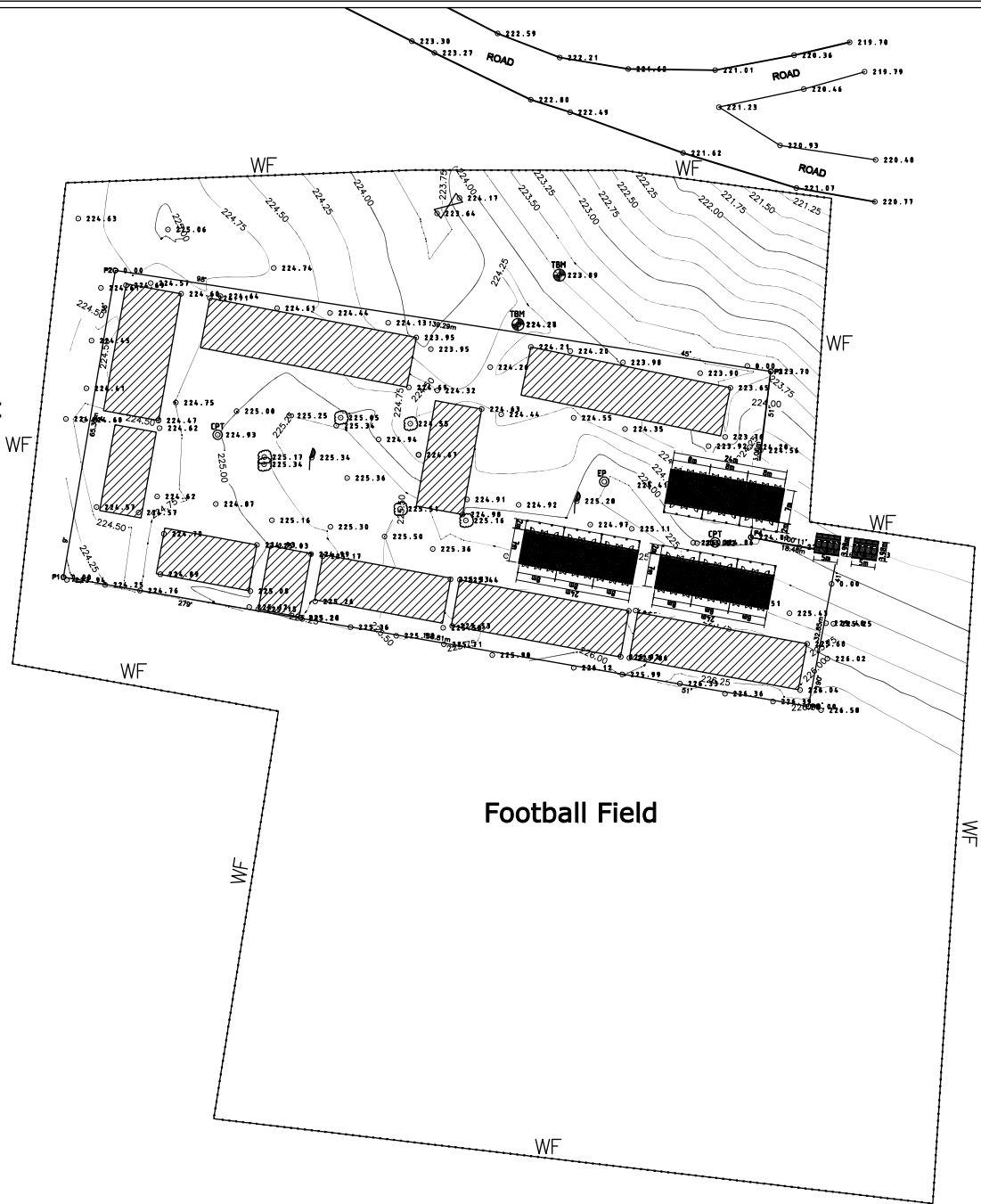
BOUNDARY	———
ROAD	====
SPOT HEIGHT	○ 244.17
TEMPORARY BENCHMARK	⊙
BUILDING	▨
DILAPIDATED BUILDING	▤
TOILET	□
GATE	⊗
CONE PENETROMETER POINT	⊙
BOREHOLE	⊙
WELL	⊙
ELECTRIC POLE	⊙
RESERVOIR	⊙
ELECTRIC TRANSFORMER	⊙
TREE	⊙

PROJECT The Project for Construction of Classrooms for Primary Schools in OYO State in The Federal Republic of Nigeria	CLIENT	CONSULTANTS <b>YEC</b> YACHIYO ENGINEERING CO., LTD. TOKYO, JAPAN	TITLE LOCATION PLAN OF P10-N25 ST. PHILIPS PRIMARY SCHOOL FASOLA, OYO WEST LGEA OYO STATE				DRG NO: A 02 P10-N25
			APPROVED BY: N. MINAMI	CHECKED BY: T. KURUMADA	DESIGNED BY: K. OHARA	DATE: AUG.2014	SCALE: 1:500



University Environment

University Environment

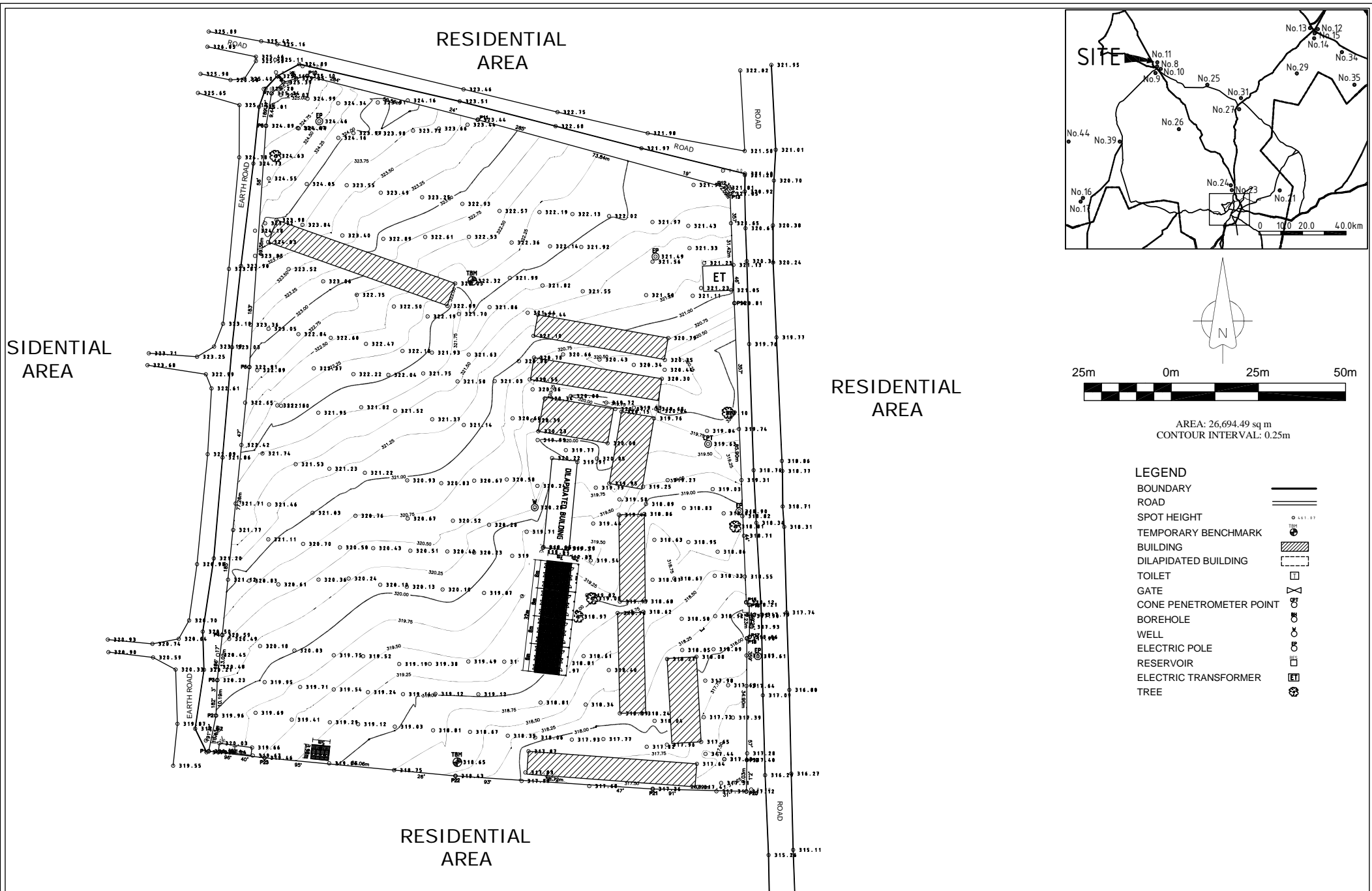


AREA = 9,965.23 sq m  
CONTOUR INTERVAL: 0.25m

**LEGEND**

- BOUNDARY ———
- ROAD = = = =
- SPOT HEIGHT ○ 441.07
- TEMPORARY BENCHMARK TBM
- BUILDING ▨
- DILAPIDATED BUILDING ▤
- TOILET □
- GATE X
- CONE PENETROMETER POINT CPT
- BOREHOLE ○
- WELL ○
- ELECTRIC POLE ○
- RESERVOIR □
- ELECTRIC TRANSFORMER □
- TREE ⊗

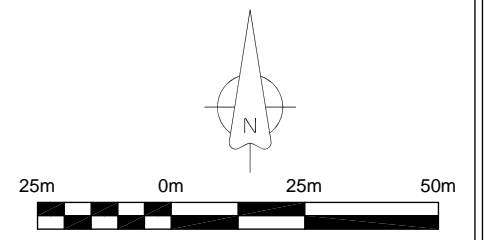
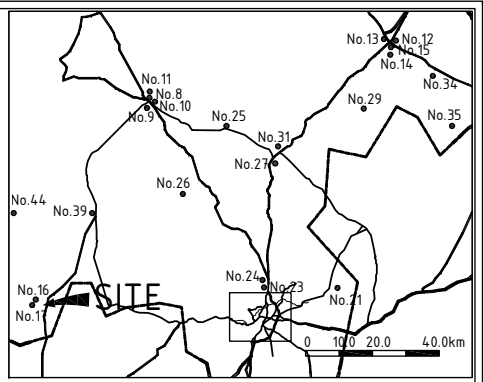
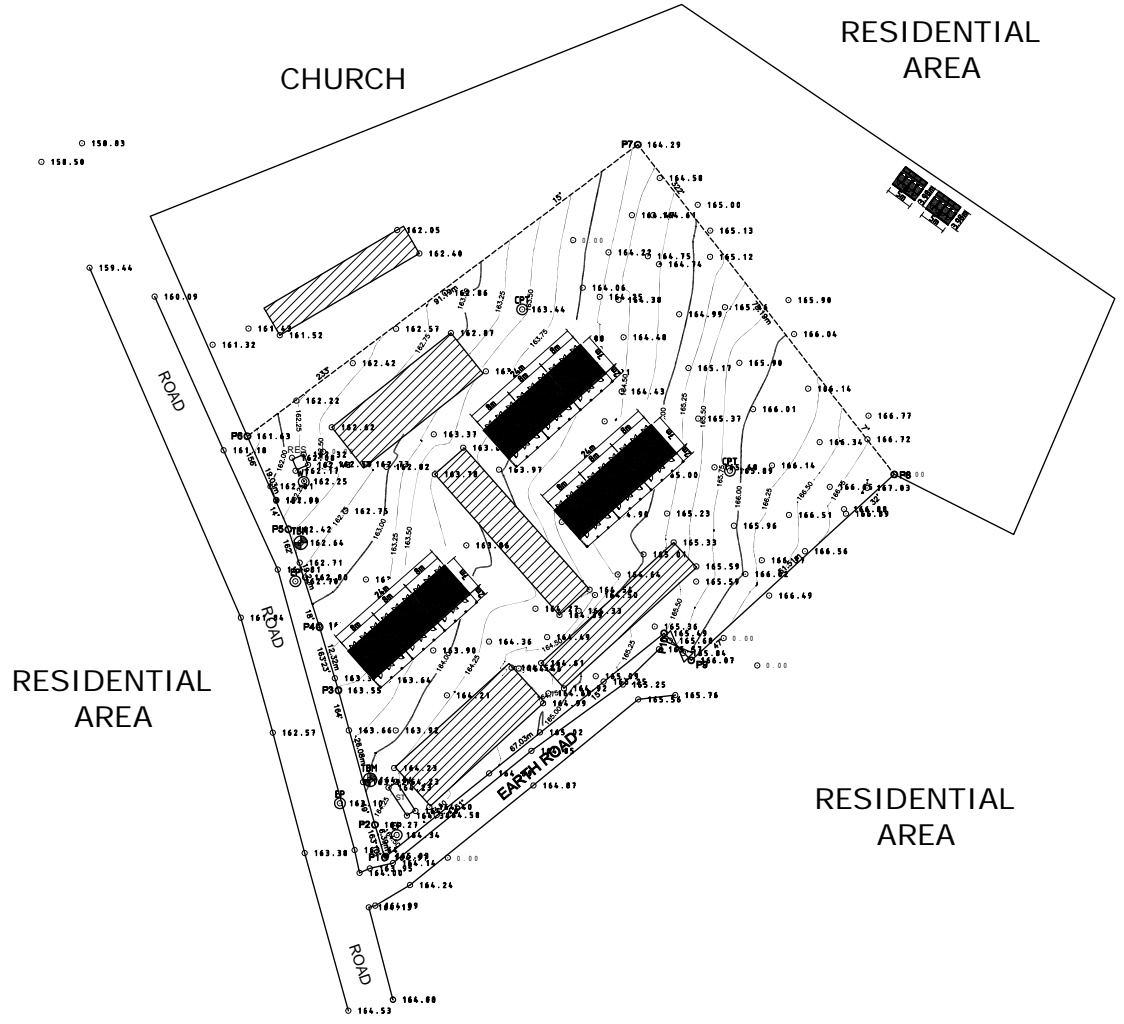
<p>PROJECT</p> <p>The Project for Construction of Classrooms for Primary Schools in OYO State in The Federal Republic of Nigeria</p>	<p>CLIENT</p>	<p>CONSULTANTS</p> <p><b>yec</b> YACHIYO ENGINEERING CO., LTD. TOKYO, JAPAN</p>	<p>TITLE LOCATION PLAN OF P12-N37 ABADINA PRIMARY SCHOOL U.I., IBADAN NORTH LGEA OYO STATE</p>	<p>DRG NO :</p> <p>A 02 P12-N37</p>			
			<p>APPROVED BY :</p> <p>N. MINAMI</p>	<p>CHECKED BY :</p> <p>T. KURUMADA</p>	<p>DESIGNED BY :</p> <p>K. OHARA</p>	<p>DATE :</p> <p>AUG.2014</p>	<p>SCALE :</p> <p>1:1000</p>



AREA: 26,694.49 sq m  
 CONTOUR INTERVAL: 0.25m

- LEGEND**
- BOUNDARY
  - ROAD
  - SPOT HEIGHT
  - TEMPORARY BENCHMARK
  - BUILDING
  - DILAPIDATED BUILDING
  - TOILET
  - GATE
  - CONE PENETROMETER POINT
  - BOREHOLE
  - WELL
  - ELECTRIC POLE
  - RESERVOIR
  - ELECTRIC TRANSFORMER
  - TREE

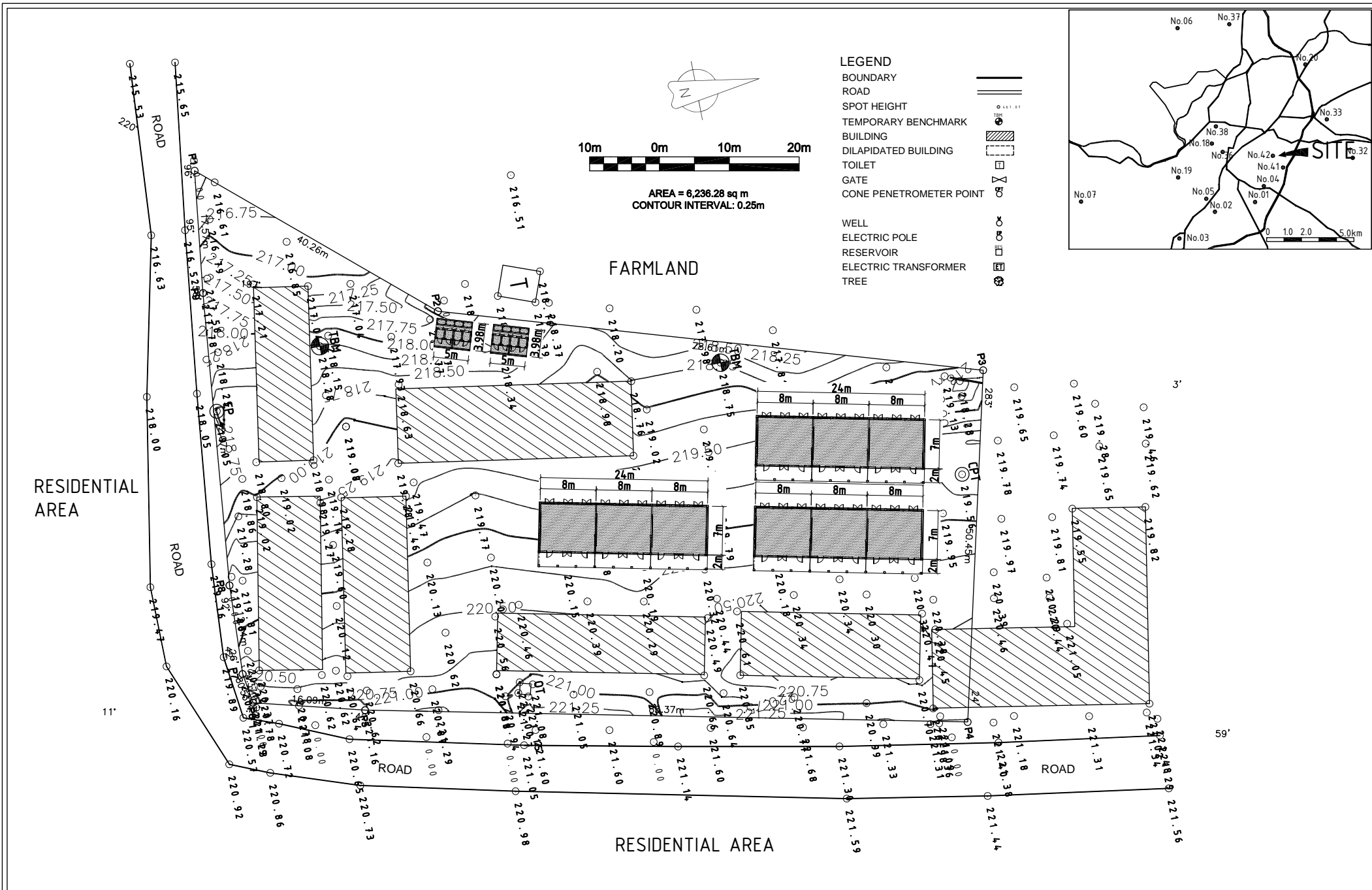
PROJECT The Project for Construction of Classrooms for Primary Schools in OYO State in The Federal Republic of Nigeria	CLIENT	CONSULTANTS <b>yoc</b> YACHIYO ENGINEERING CO., LTD. TOKYO, JAPAN	TITLE LOCATION PLAN OF P13-N11 ST. MARY'S (RCM) PRIMARY SCHOOL I ISEYIN LGEA OYO STATE				DRG NO: A 02 P13-N11
			APPROVED BY: N. MINAMI	CHECKED BY: T. KURUMADA	DESIGNED BY: K. OHARA	DATE: AUG.2014	SCALE: 1:1000



AREA: 8,208.63 sq m  
CONTOUR INTERVAL: 0.25m

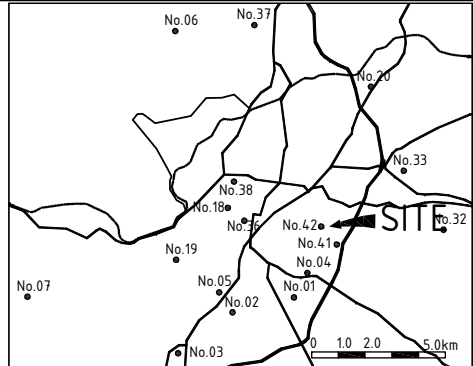
- LEGEND**
- BOUNDARY
  - ROAD
  - SPOT HEIGHT
  - TEMPORARY BENCHMARK
  - BUILDING
  - DILAPIDATED BUILDING
  - TOILET
  - GATE
  - CONE PENETROMETER POINT
  - BOREHOLE
  - WELL
  - ELECTRIC POLE
  - RESERVOIR
  - ELECTRIC TRANSFORMER
  - TREE

PROJECT The Project for Construction of Classrooms for Primary Schools in OYO State in The Federal Republic of Nigeria	CLIENT	CONSULTANTS <b>yec</b> YACHIYO ENGINEERING CO., LTD. TOKYO, JAPAN	TITLE LOCATION PLAN OF P14-N17 BAPTIST PRIMARY SCHOOL I IGBOORA, IBARAPA CENTRAL LGEA OYO STATE				DRG NO : A 02 P14-N17
			APPROVED BY : N. MINAMI	CHECKED BY : T. KURUMADA	DESIGNED BY : K. OHARA	DATE : AUG.2014	SCALE : 1:1000



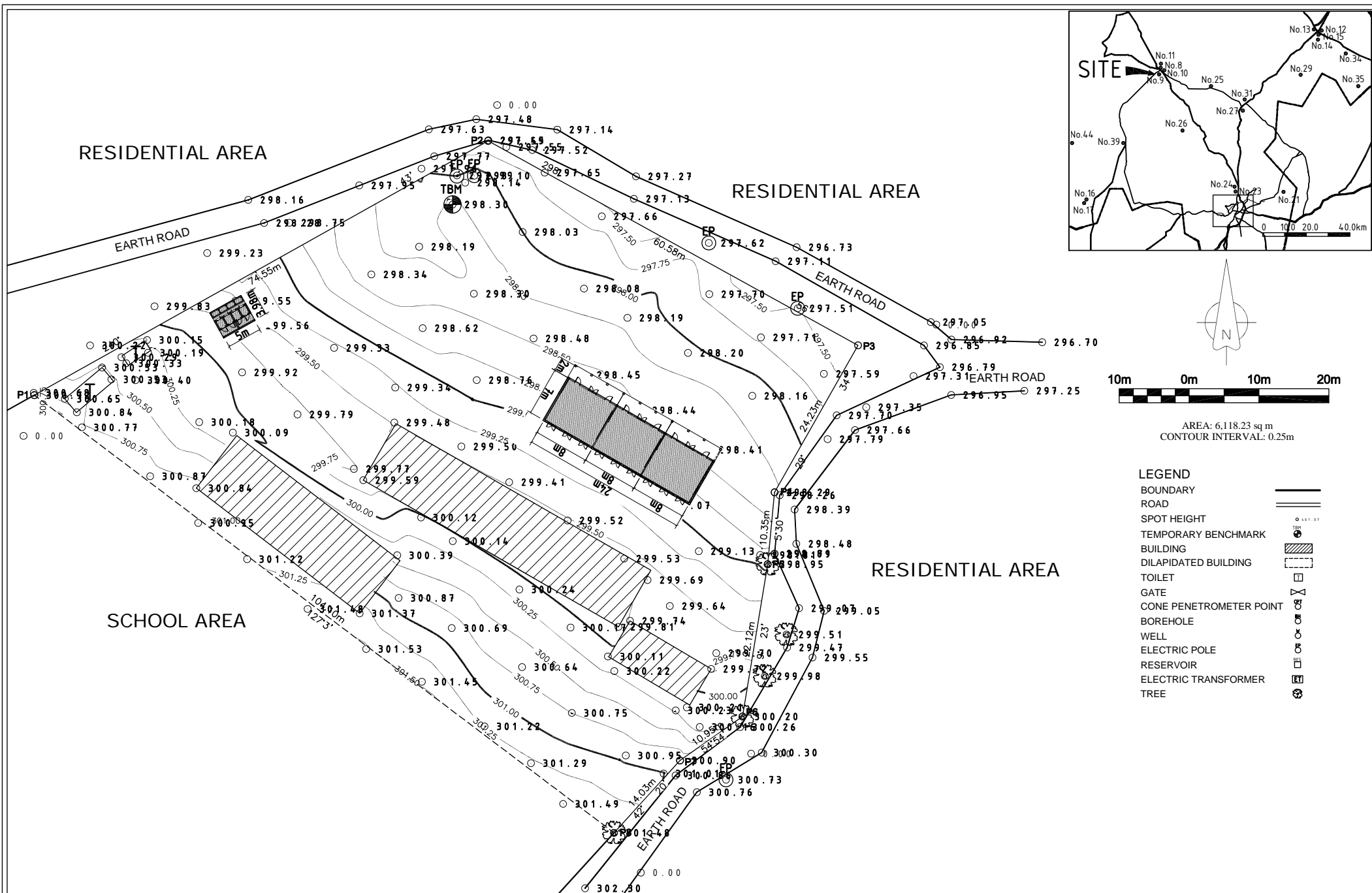
AREA = 6,236.28 sq m  
CONTOUR INTERVAL: 0.25m

- LEGEND**
- BOUNDARY
  - ROAD
  - SPOT HEIGHT
  - TEMPORARY BENCHMARK
  - BUILDING
  - DILAPIDATED BUILDING
  - TOILET
  - GATE
  - WELL
  - ELECTRIC POLE
  - RESERVOIR
  - ELECTRIC TRANSFORMER
  - TREE



PROJECT The Project for Construction of Classrooms for Primary Schools in OYO State in The Federal Republic of Nigeria	CLIENT	CONSULTANTS <b>YEC</b> YACHIYO ENGINEERING CO., LTD. TOKYO, JAPAN	TITLE LOCATION PLAN OF P17-N42 COMMUNITY PRIMARY SCHOOL 1-4 AYEKALE, IBADAN NORTH EAST LGEA OYO STATE				DRG NO: A 02 P17-N42
			APPROVED BY: N. MINAMI	CHECKED BY: T. KURUMADA	DESIGNED BY: K. OHARA	DATE: AUG.2014	SCALE: 1:500



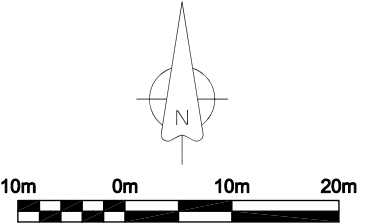
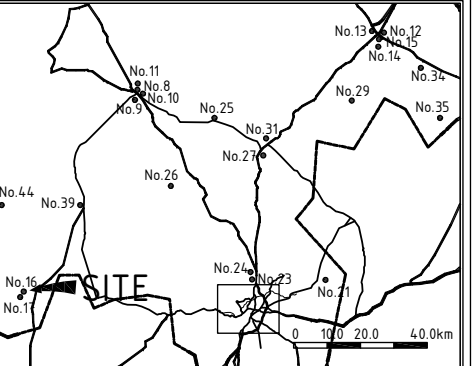
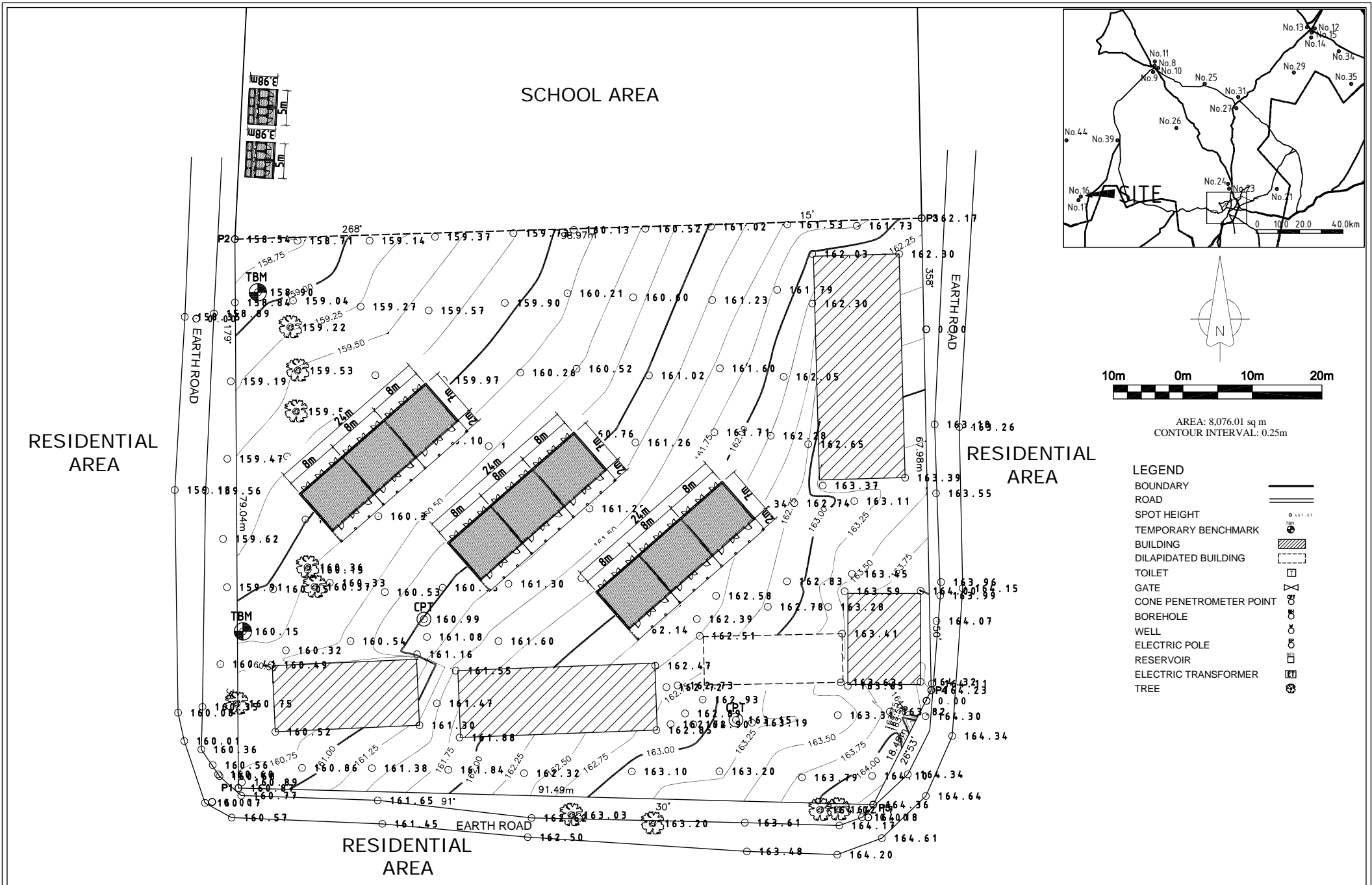


AREA: 6,118.23 sq m  
 CONTOUR INTERVAL: 0.25m

**LEGEND**

- BOUNDARY
- ROAD
- SPOT HEIGHT
- TEMPORARY BENCHMARK
- BUILDING
- DILAPIDATED BUILDING
- TOILET
- GATE
- CONE PENETROMETER POINT
- BORHOLE
- WELL
- ELECTRIC POLE
- RESERVOIR
- ELECTRIC TRANSFORMER
- TREE

PROJECT The Project for Construction of Classrooms for Primary Schools in OYO State in The Federal Republic of Nigeria	CLIENT	CONSULTANTS <b>yec</b> YACHIYO ENGINEERING CO., LTD. TOKYO, JAPAN	TITLE LOCATION PLAN OF P18-N9 METHODIST PRIMARY SCHOOL AGO-IJIO, ISEYIN LGEA OYO STATE				DRG NO: A 02 P18-N9
			APPROVED BY: N. MINAMI	CHECKED BY: T. KURUMADA	DESIGNED BY: K. OHARA	DATE: AUG.2014	SCALE: 1:500



AREA: 8,076.01 sq m  
CONTOUR INTERVAL: 0.25m

- LEGEND**
- BOUNDARY
  - ROAD
  - SPOT HEIGHT
  - TEMPORARY BENCHMARK
  - BUILDING
  - DILAPIDATED BUILDING
  - TOILET
  - GATE
  - CONE PENETROMETER POINT
  - BOREHOLE
  - WELL
  - ELECTRIC POLE
  - RESERVOIR
  - ELECTRIC TRANSFORMER
  - TREE

PROJECT The Project for Construction of Classrooms for Primary Schools in OYO State in The Federal Republic of Nigeria	CLIENT	CONSULTANTS <b>yec</b> YACHIYO ENGINEERING CO., LTD. TOKYO, JAPAN	TITLE LOCATION PLAN OF P19-N16 METHODIST SCHOOL III OKE-ODO, IGBOORA, IBARAPA CENTRAL LGEA OYO STATE				DRG NO: A 02 P19-N16
			APPROVED BY: N. MINAMI	CHECKED BY: T. KURUMADA	DESIGNED BY: K. OHARA	DATE: AUG.2014	SCALE: 1:500