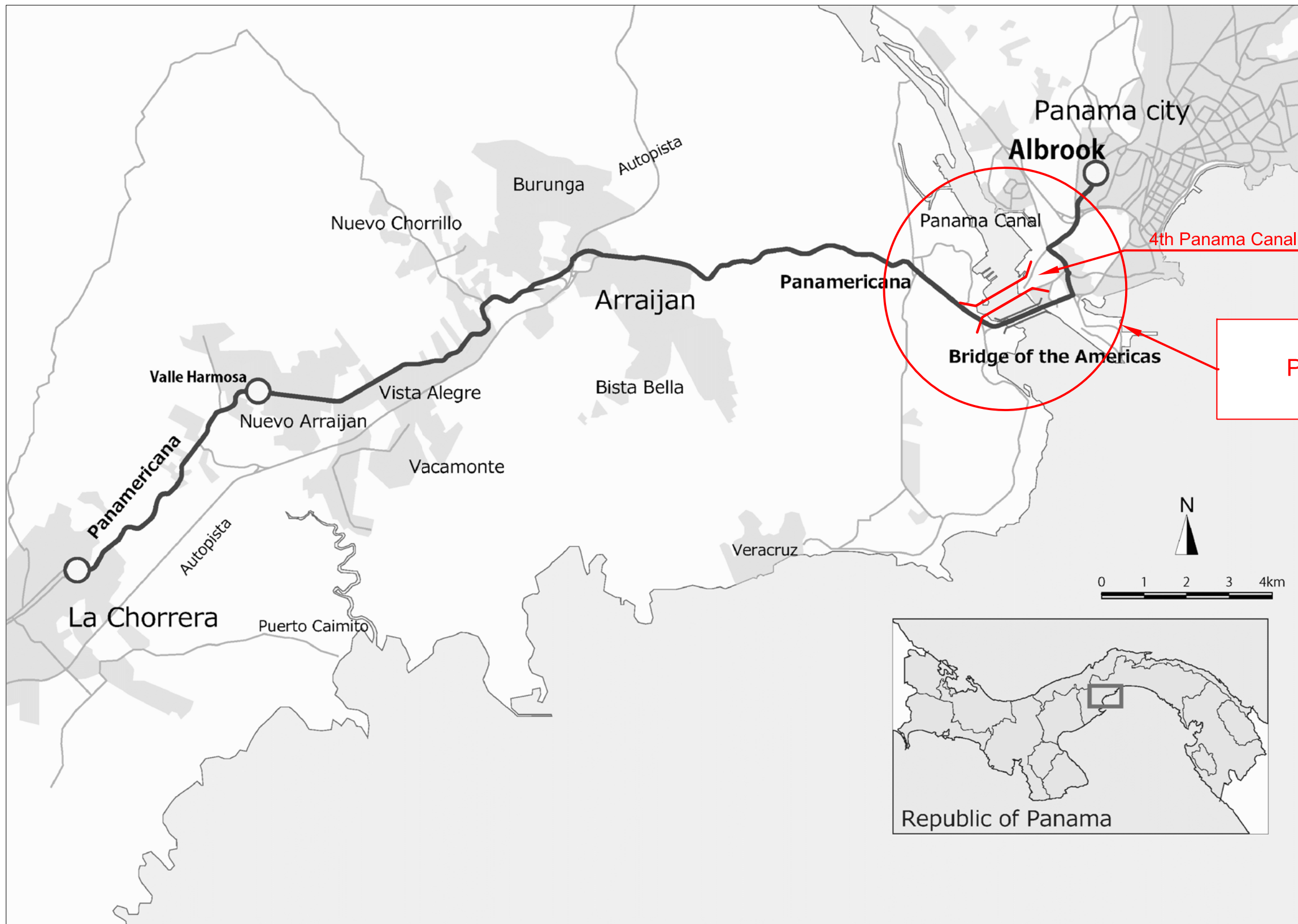


Appendix 5: Drawings (4th Panama Canal Bridge)

Appendix 5-1 : Preliminary Design Drawings

Appendix 5-1-1 : Project Location Map



SECRETARIA DEL METRO DE PANAMA



JAPAN INTERNATIONAL COOPERATION AGENCY

THE FEASIBILITY STUDY ON PANAMA CITY URBAN TRANSPORTATION LINE-3 PROJECT

DRAWN:
DESIGNED:

DATE: May 2014
SCALE: S=1:100,000

RECEIVED BY:
TEAM LEADER/URBAN RAILWAY PLANNING

SUBMITTED BY:
CIVIL AND FACILITY PLANNING

CHECKED BY:
APPROVED BY:

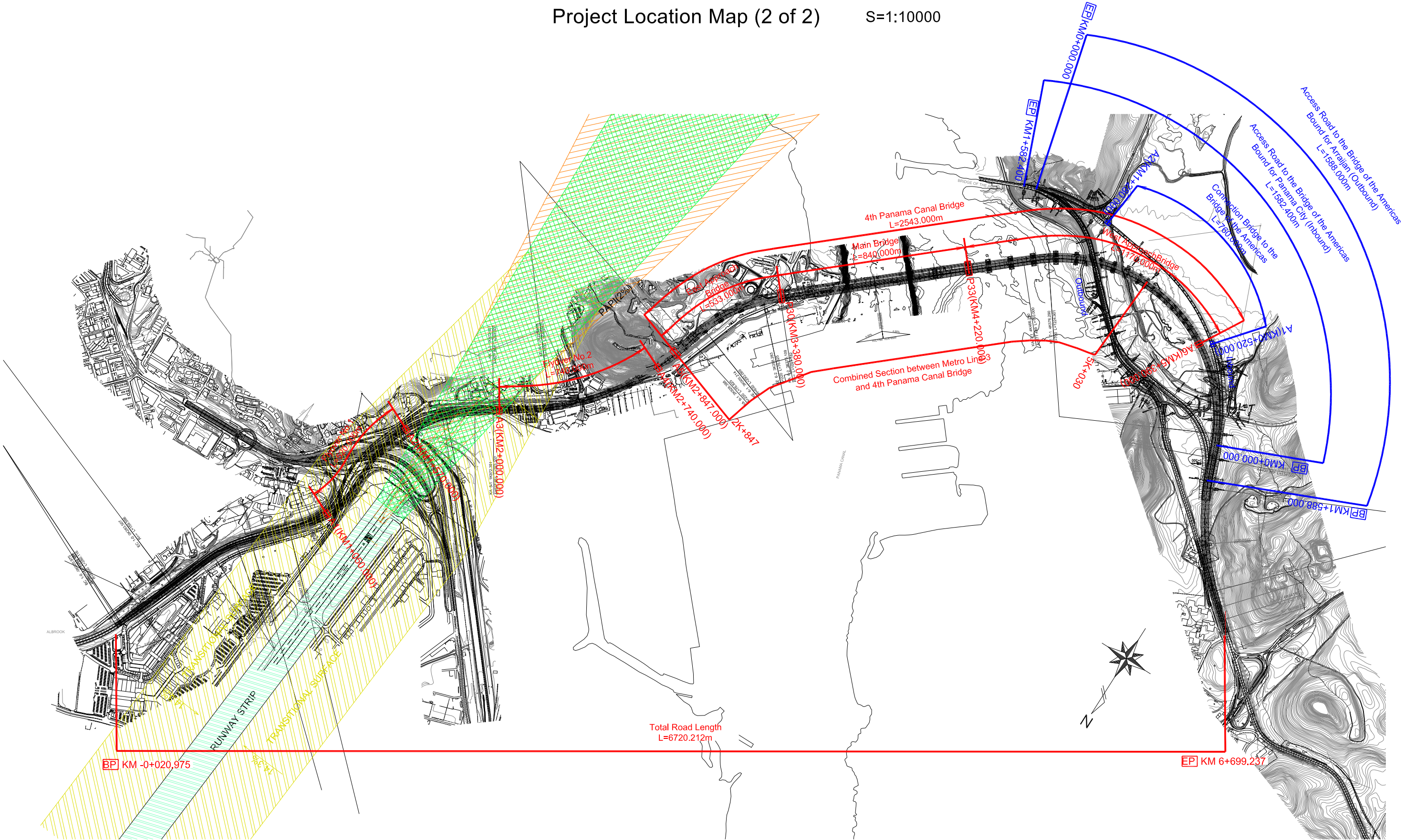
PAGE:
1 / 2

REMARKS:



Project Location Map (1 of 2)

Project Location Map (2 of 2)

S=1:10000

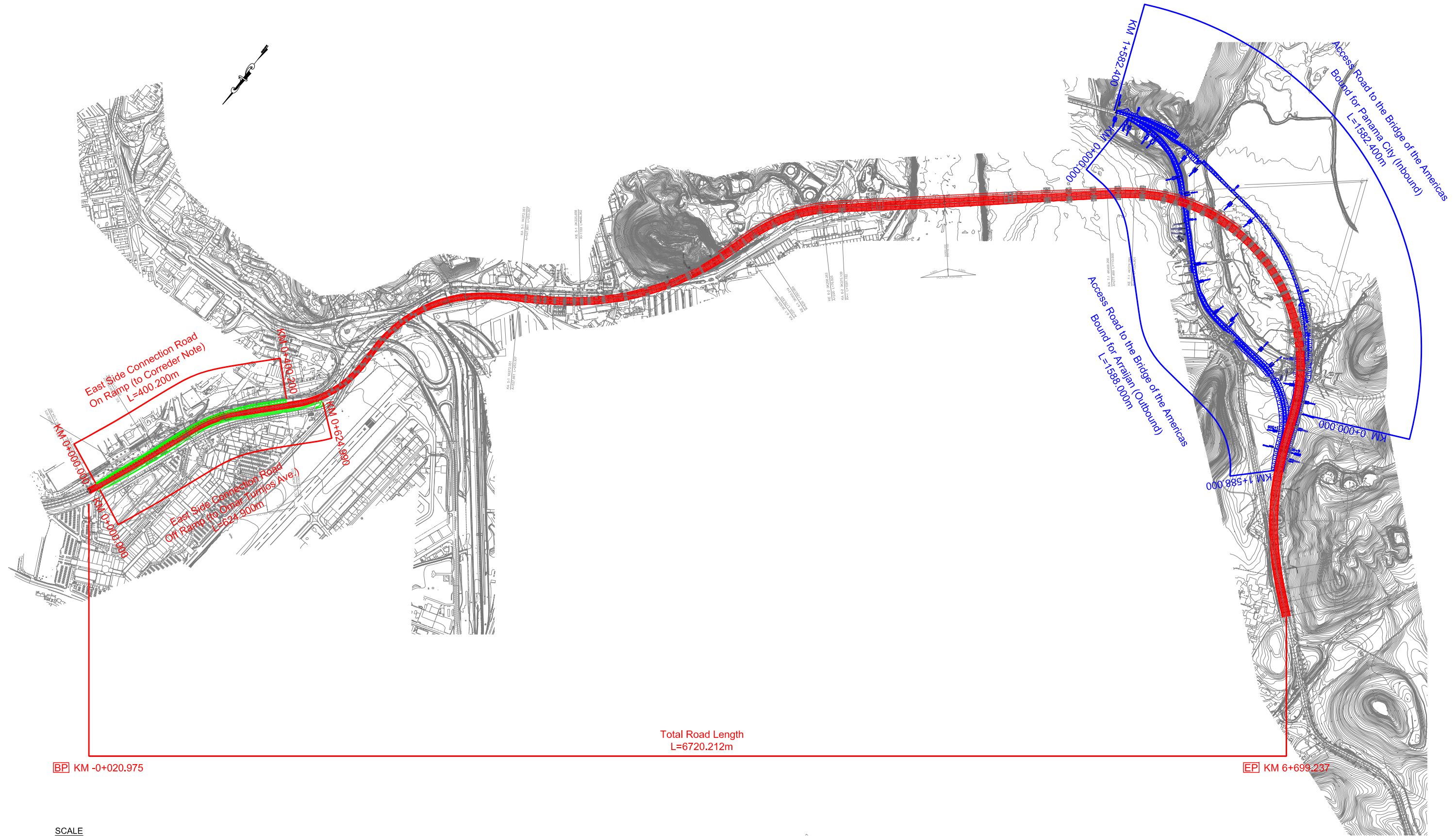


Total Road Length
L=6720.212m

	SECRETARIA DEL METRO DE PANAMA	 JAPAN INTERNATIONAL COOPERATION AGENCY	THE FEASIBILITY STUDY ON PANAMA CITY URBAN TRANSPORTATION LINE-3 PROJECT					REMARKS: Project Location Map (2 of 2)
			DRAWN:	DATE: May 2014	RECEIVED BY:	SUBMITTED BY:	CHECKED BY:	
			DESIGNED:	SCALE: S=1:10000	TEAM LEADER/URBAN RAILWAY PLANNING	CIVIL AND FACILITY PLANNING	APPROVED BY:	

Appendix 5-1-2: Road Drawings

Plan S=1:100,000

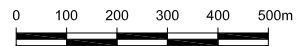


Total Road Length
L=6720.212m

BP KM -0+020.975

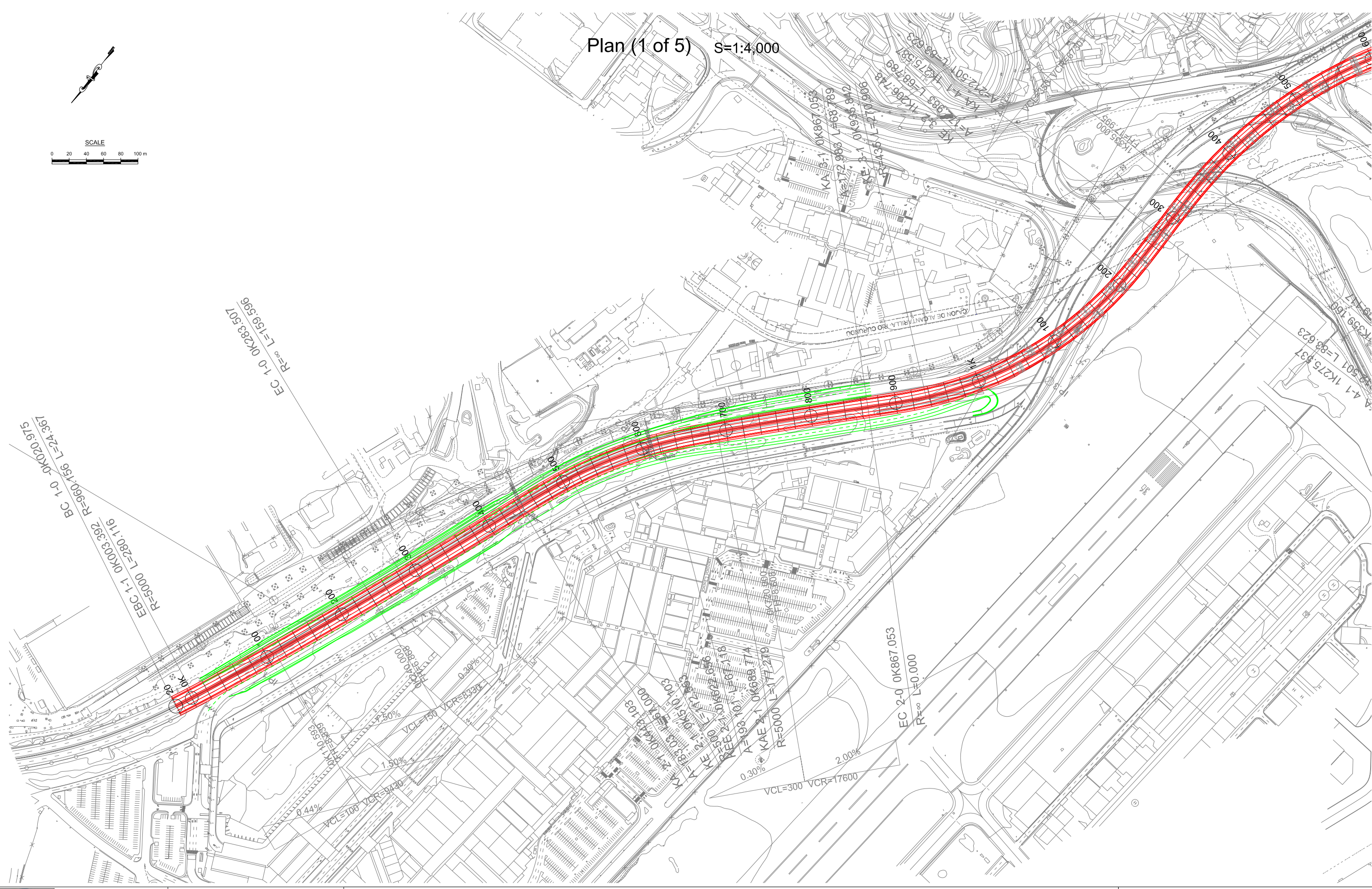
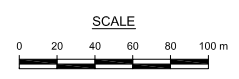
EP KM 6+699.237



SCALE

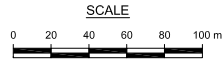


	SECRETARIA DEL METRO DE PANAMA	JAPAN INTERNATIONAL COOPERATION AGENCY	THE FEASIBILITY STUDY ON PANAMA CITY URBAN TRANSPORTATION LINE-3 PROJECT					REMARKS:	
			DRAWN:	DATE: May 2014	RECEIVED BY:	SUBMITTED BY:	CHECKED BY:	PAGE:	Plan
DESIGNED:	SCALE: S=1:100,000	TEAM LEADER/URBAN RAILWAY PLANNING	CIVIL AND FACILITY PLANNING	APPROVED BY:	1	15			

Plan (1 of 5) S=1:4,000



	SECRETARIA DEL METRO DE PANAMA	 JAPAN INTERNATIONAL COOPERATION AGENCY	THE FEASIBILITY STUDY ON PANAMA CITY URBAN TRANSPORTATION LINE-3 PROJECT					REMARKS:	
			DRAWN:	DATE: May 2014	RECEIVED BY:	SUBMITTED BY:	CHECKED BY:	PAGE: 2	Plan (1 of 5)
DESIGNED:	SCALE: S=1:4,000	TEAM LEADER/URBAN RAILWAY PLANNING	CIVIL AND FACILITY PLANNING	APPROVED BY:	15				



SECRETARIA DEL METRO DE PANAMA

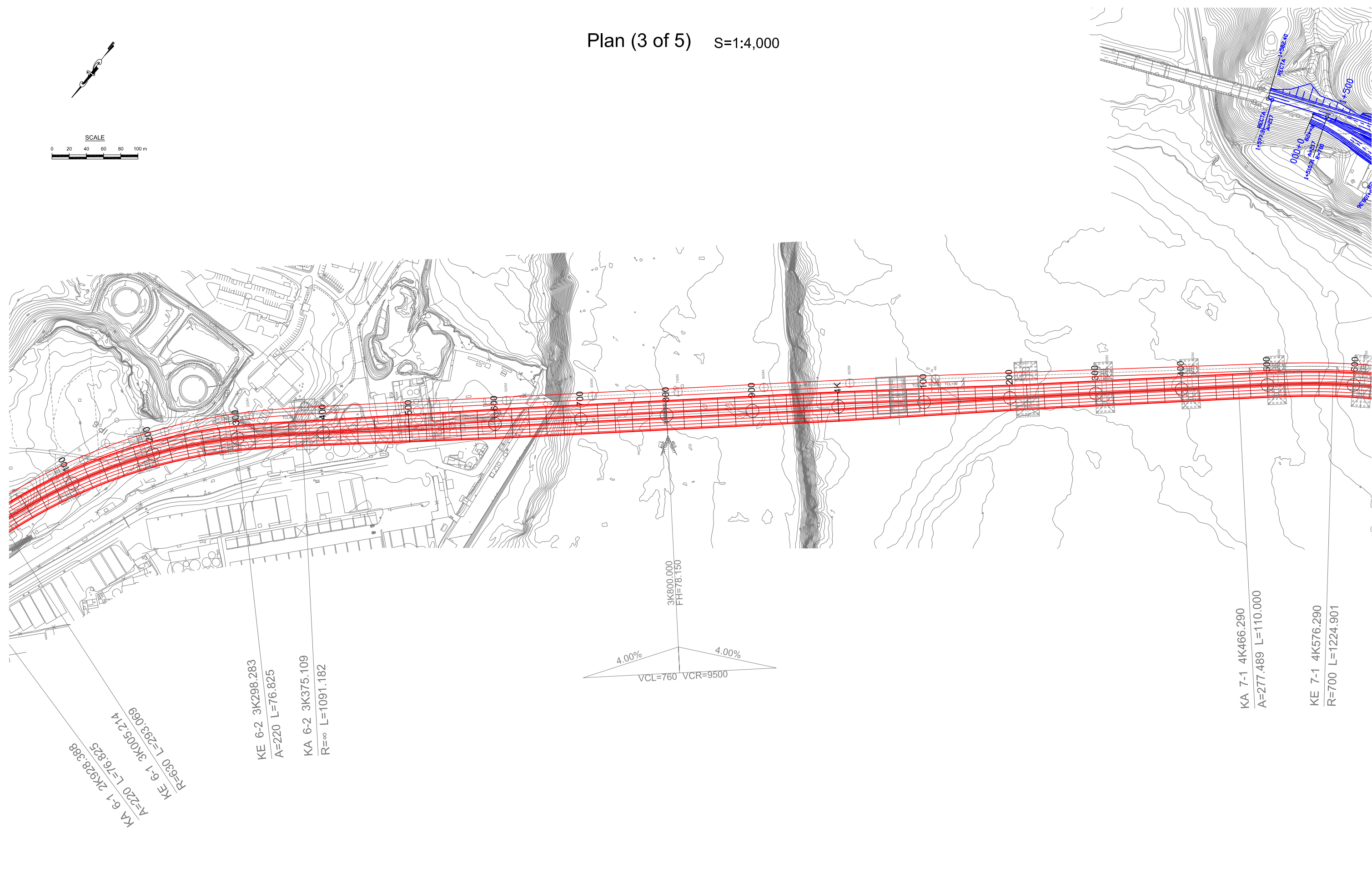
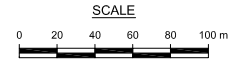


JAPAN INTERNATIONAL COOPERATION AGENCY

THE FEASIBILITY STUDY ON PANAMA CITY URBAN TRANSPORTATION LINE-3 PROJECT

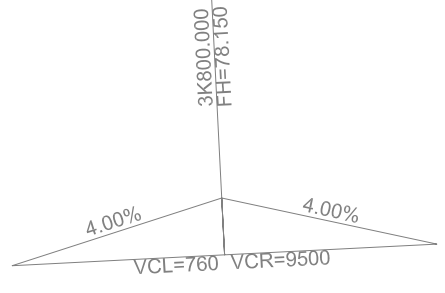
DRAWN:	DATE: May 2014	RECEIVED BY:	SUBMITTED BY:	CHECKED BY:	PAGE: 3
DESIGNED:	SCALE: S=1:4,000	TEAM LEADER/URBAN RAILWAY PLANNING	CIVIL AND FACILITY PLANNING	APPROVED BY:	15

REMARKS:
Plan (2 of 5)



KA 6-1 2K928.388
A=220 L=76.825
R=630 L=293.069
KE 6-1 3K005.214

KE 6-2 3K298.283
A=220 L=76.825
KA 6-2 3K375.109
R=∞ L=1091.182



KA 7-1 4K466.290
A=277.489 L=110.000

KE 7-1 4K576.290
R=700 L=1224.901

	SECRETARIA DEL METRO DE PANAMA	JAPAN INTERNATIONAL COOPERATION AGENCY	THE FEASIBILITY STUDY ON PANAMA CITY URBAN TRANSPORTATION LINE-3 PROJECT					REMARKS: Plan (3 of 5)
			DRAWN:	DATE: May 2014	RECEIVED BY:	SUBMITTED BY:	CHECKED BY:	
			DESIGNED:	SCALE: S=1:4,000	TEAM LEADER/URBAN RAILWAY PLANNING	CIVIL AND FACILITY PLANNING	APPROVED BY:	