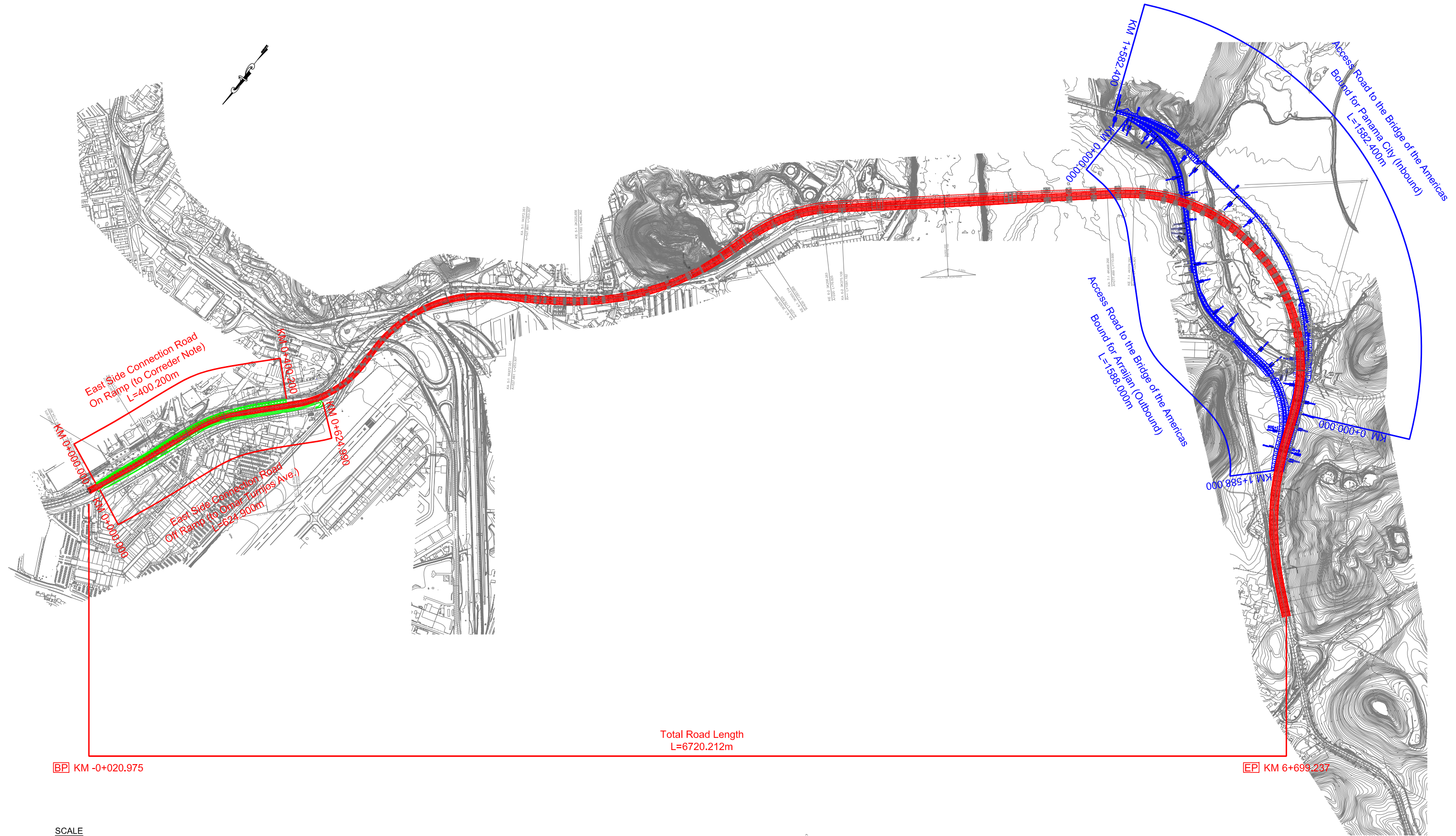


## Appendix 5-1-2: Road Drawings

Plan S=1:100,000



Total Road Length  
L=6720.212m

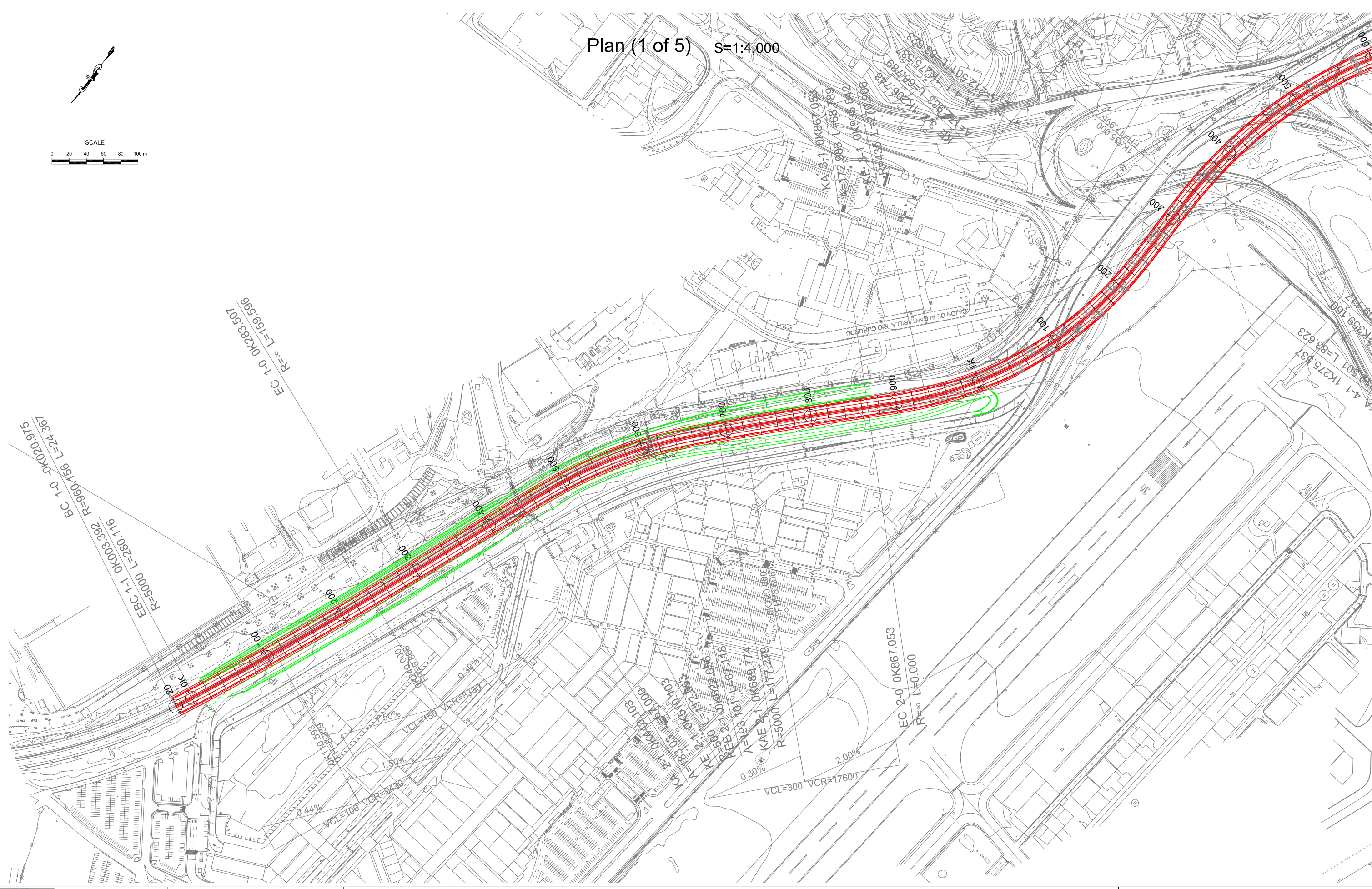
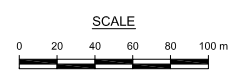
BP KM -0+020.975



EP KM 6+699.237

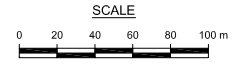




	SECRETARIA DEL METRO DE PANAMA	JAPAN INTERNATIONAL COOPERATION AGENCY	THE FEASIBILITY STUDY ON PANAMA CITY URBAN TRANSPORTATION LINE-3 PROJECT					REMARKS:	
			DRAWN:	DATE: May 2014	RECEIVED BY:	SUBMITTED BY:	CHECKED BY:	PAGE:	Plan
DESIGNED:	SCALE: S=1:100,000	TEAM LEADER/URBAN RAILWAY PLANNING	CIVIL AND FACILITY PLANNING	APPROVED BY:	1	15			

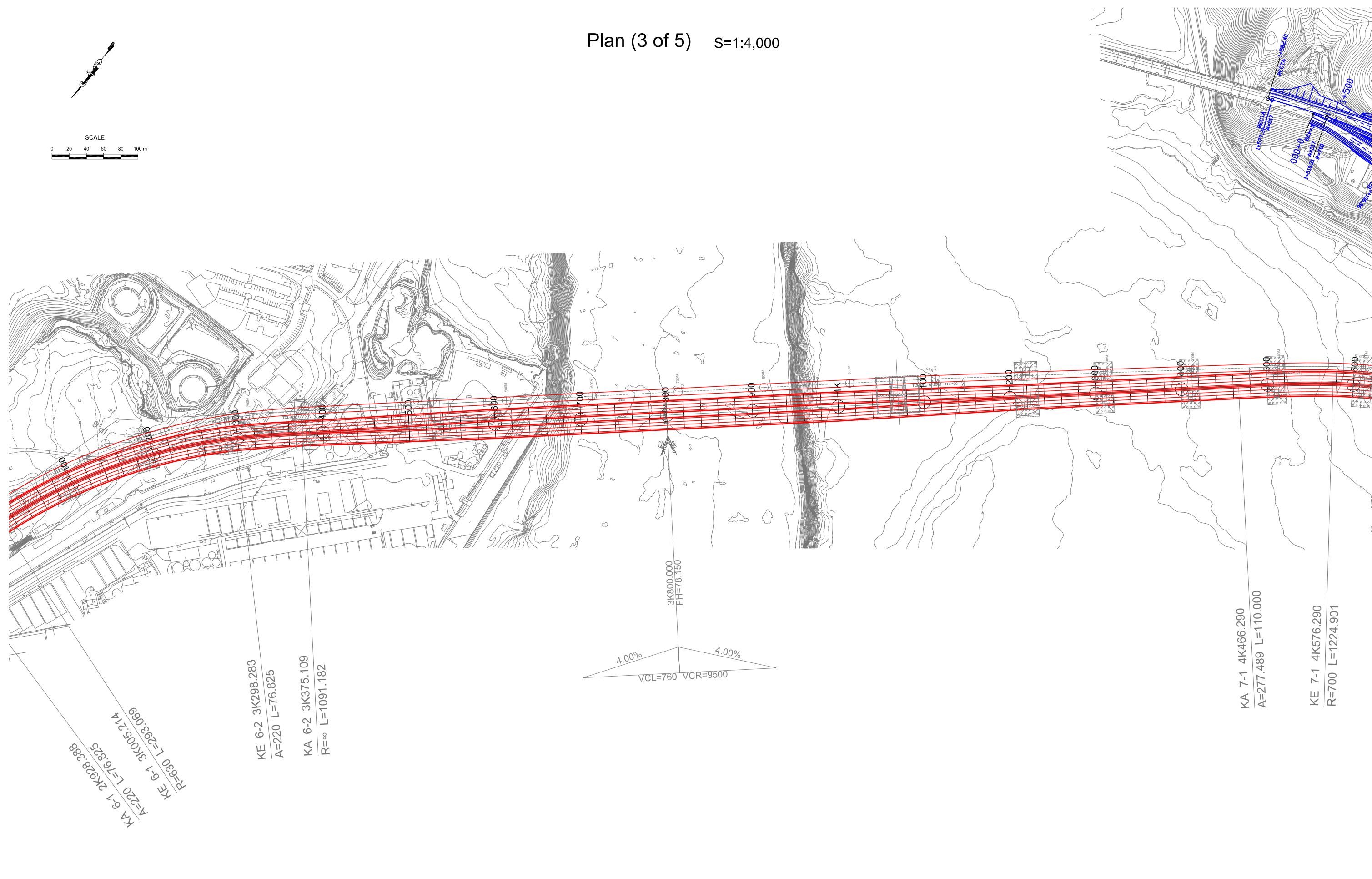
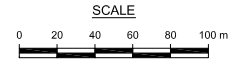
Plan (1 of 5) S=1:4,000



	SECRETARIA DEL METRO DE PANAMA	 JAPAN INTERNATIONAL COOPERATION AGENCY	THE FEASIBILITY STUDY ON PANAMA CITY URBAN TRANSPORTATION LINE-3 PROJECT					REMARKS:	
			DRAWN:	DATE: May 2014	RECEIVED BY:	SUBMITTED BY:	CHECKED BY:	PAGE: 2	Plan (1 of 5)
DESIGNED:	SCALE: S=1:4,000	TEAM LEADER/URBAN RAILWAY PLANNING	CIVIL AND FACILITY PLANNING	APPROVED BY:	15				



	SECRETARIA DEL METRO DE PANAMA	 JAPAN INTERNATIONAL COOPERATION AGENCY	THE FEASIBILITY STUDY ON PANAMA CITY URBAN TRANSPORTATION LINE-3 PROJECT					REMARKS:	
			DRAWN:	DATE: May 2014	RECEIVED BY:	SUBMITTED BY:	CHECKED BY:	PAGE:	Plan (2 of 5)
DESIGNED:	SCALE: S=1:4,000	TEAM LEADER/URBAN RAILWAY PLANNING	CIVIL AND FACILITY PLANNING	APPROVED BY:	3	15			





KA 6-1 2K928.388  
A=220 L=76.825  
R=630 L=293.069  
KE 6-1 3K005.214

KE 6-2 3K298.283  
A=220 L=76.825  
KA 6-2 3K375.109  
R=∞ L=1091.182

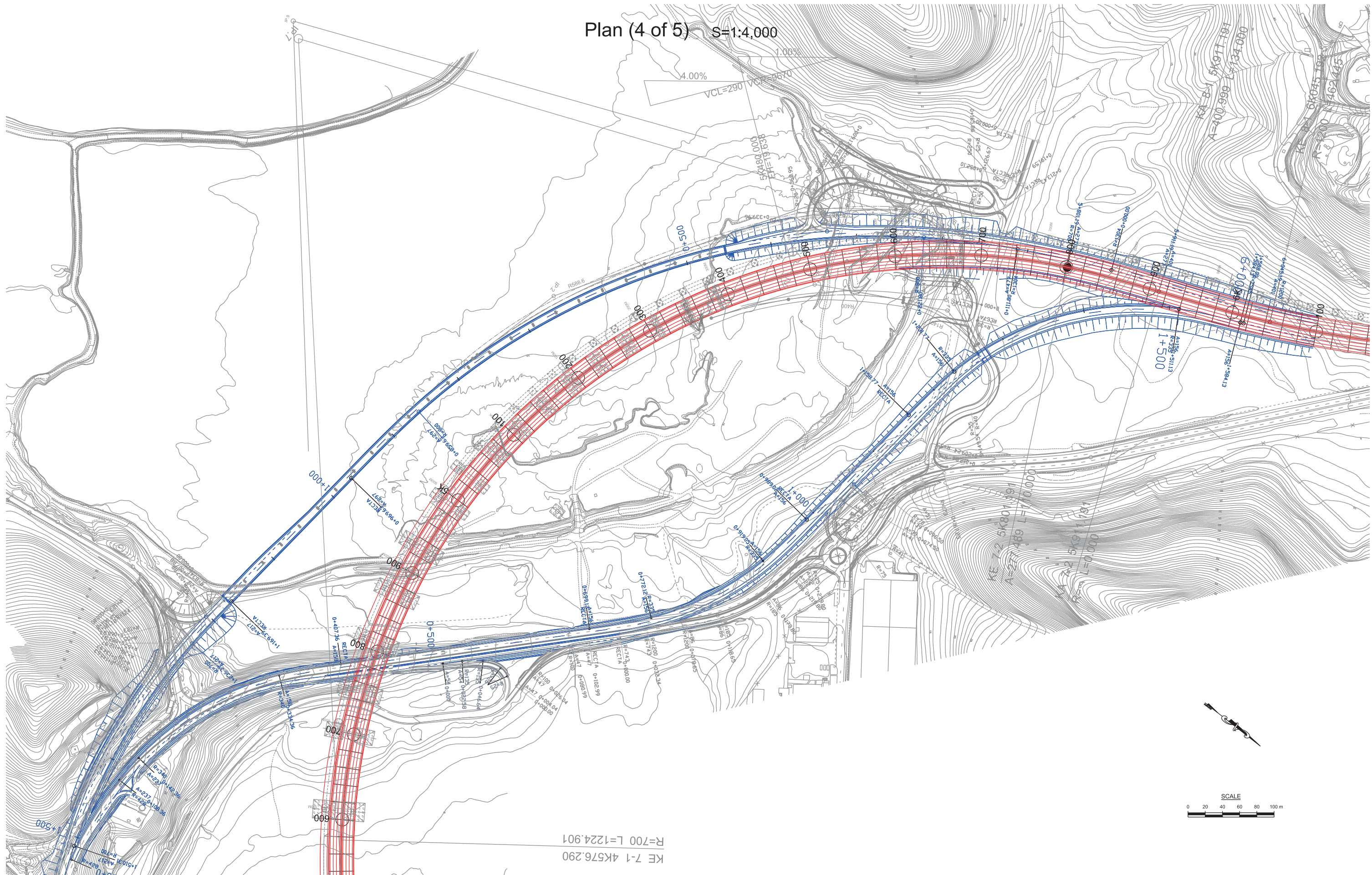
3K800.000  
FH=78.150  
4.00%  
VCL=760 VCR=9500  
4.00%

KA 7-1 4K466.290  
A=277.489 L=110.000

KE 7-1 4K576.290  
R=700 L=1224.901

 <p>SECRETARIA DEL METRO DE PANAMA</p>	 <p>JAPAN INTERNATIONAL COOPERATION AGENCY</p>	THE FEASIBILITY STUDY ON PANAMA CITY URBAN TRANSPORTATION LINE-3 PROJECT						REMARKS:  Plan (3 of 5)
		DRAWN: DESIGNED:	DATE: May 2014 SCALE: S=1:4,000	RECEIVED BY: TEAM LEADER/URBAN RAILWAY PLANNING	SUBMITTED BY: CIVIL AND FACILITY PLANNING	CHECKED BY: APPROVED BY:	PAGE: 4 / 15	

Plan (4 of 5) S=1:4,000



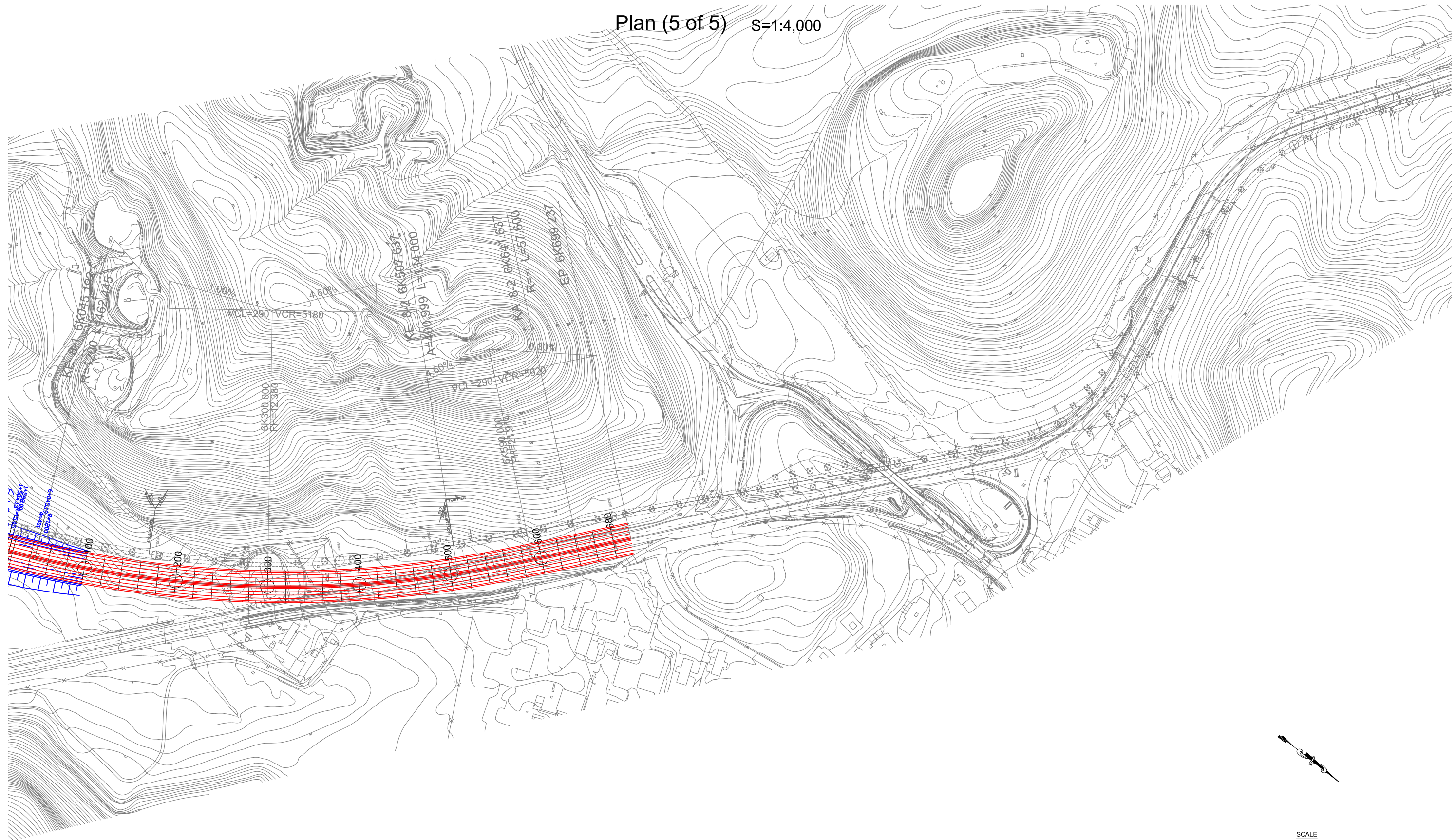
KE 7-1 4K576.290  
R=700 L=1224.901



THE FEASIBILITY STUDY ON PANAMA CITY URBAN TRANSPORTATION LINE-3 PROJECT

DRAWN:	DATE: May 2014	RECEIVED BY:	SUBMITTED BY:	CHECKED BY:	PAGE:
DESIGNED:	SCALE: S=1:4,000	TEAM LEADER/URBAN RAILWAY PLANNING	CIVIL AND FACILITY PLANNING	APPROVED BY:	5
					14

REMARKS:  
Plan (4 of 5)



SECRETARIA DEL METRO DE PANAMA



JAPAN INTERNATIONAL COOPERATION AGENCY

THE FEASIBILITY STUDY ON PANAMA CITY URBAN TRANSPORTATION LINE-3 PROJECT

DRAWN:  
DESIGNED:

DATE: May 2014  
SCALE: S=1:4,000

RECEIVED BY:  
TEAM LEADER/URBAN RAILWAY PLANNING

SUBMITTED BY:  
CIVIL AND FACILITY PLANNING

CHECKED BY:  
APPROVED BY:

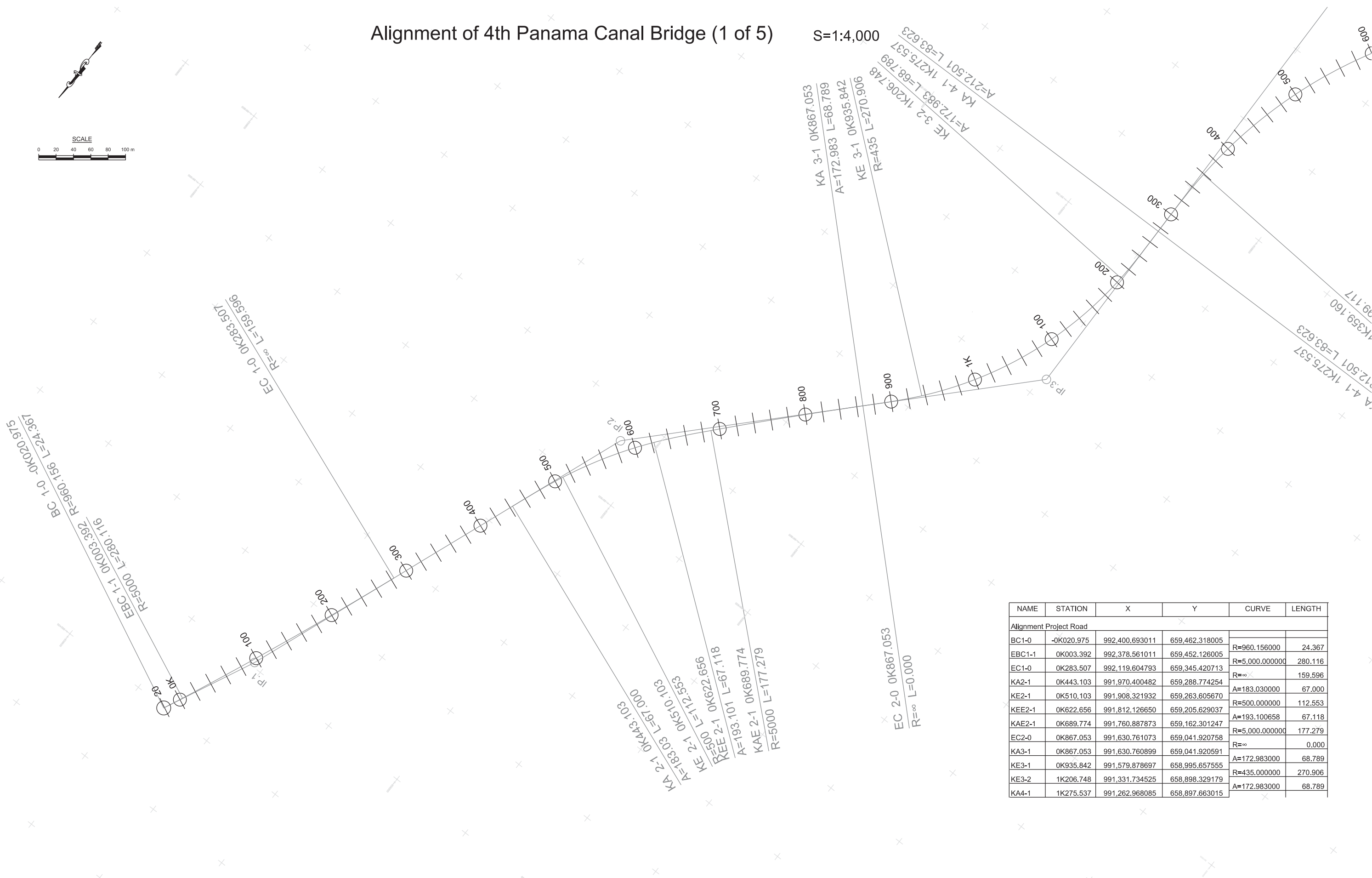
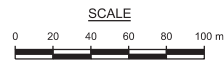
PAGE: 6 / 15

REMARKS:

Plan (5 of 5)

# Alignment of 4th Panama Canal Bridge (1 of 5)

S=1:4,000



NAME	STATION	X	Y	CURVE	LENGTH
Alignment Project Road					
BC1-0	-0K020.975	992,400.693011	659,462.318005	R=960.156000	24.367
EBC1-1	0K003.392	992,378.561011	659,452.126005	R=5,000.000000	280.116
EC1-0	0K283.507	992,119.604793	659,345.420713	R=∞	159.596
KA2-1	0K443.103	991,970.400482	659,288.774254	A=183.030000	67.000
KE2-1	0K510.103	991,908.321932	659,263.605670	R=500.000000	112.553
KEE2-1	0K622.656	991,812.126650	659,205.629037	A=193.100658	67.118
KAE2-1	0K689.774	991,760.887873	659,162.301247	R=5,000.000000	177.279
EC2-0	0K867.053	991,630.761073	659,041.920758	R=∞	0.000
KA3-1	0K867.053	991,630.760899	659,041.920591	A=172.983000	68.789
KE3-1	0K935.842	991,579.878697	658,995.657555	R=435.000000	270.906
KE3-2	1K206.748	991,331.734525	658,898.329179	A=172.983000	68.789
KA4-1	1K275.537	991,262.968085	658,897.663015		



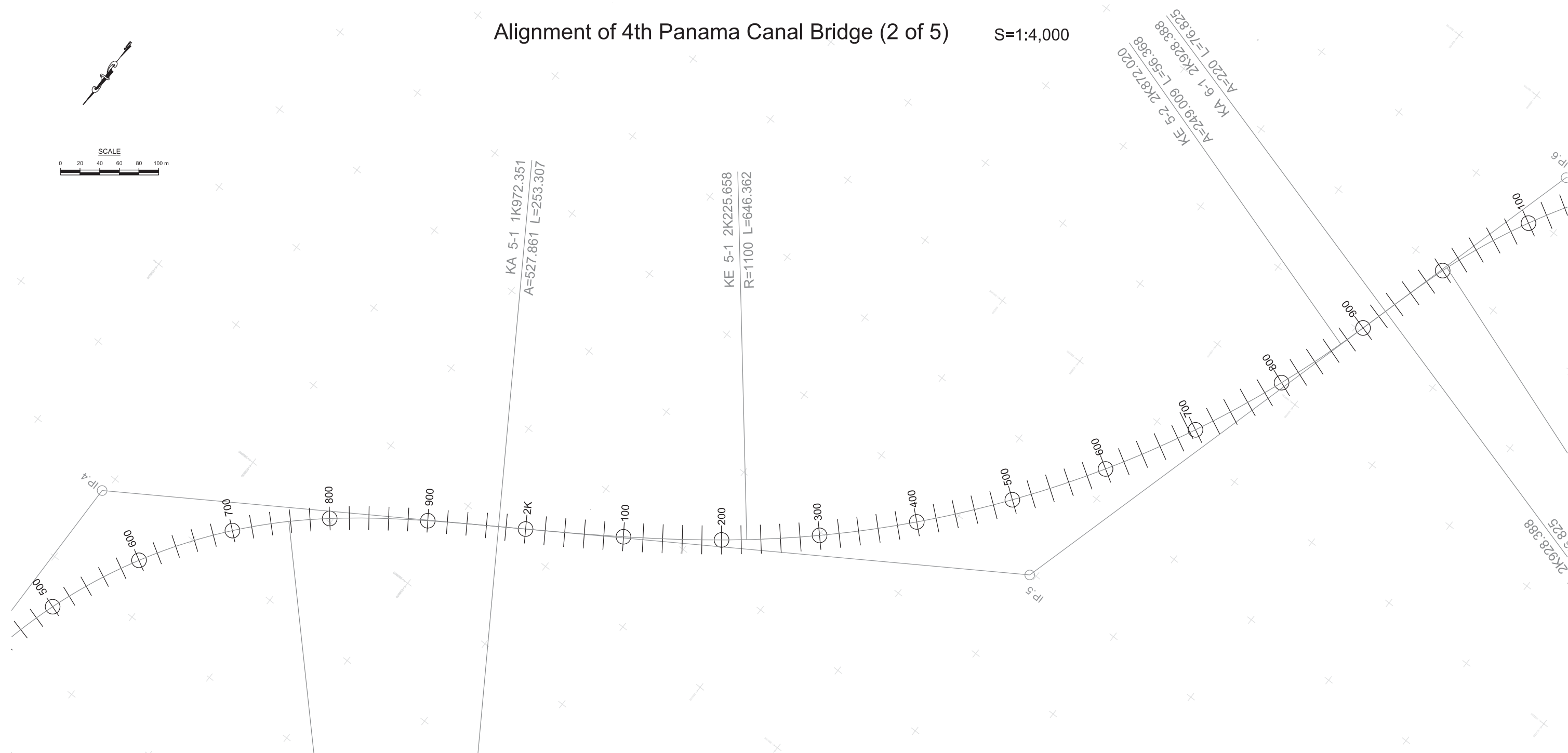
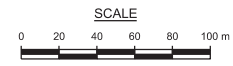
THE FEASIBILITY STUDY ON PANAMA CITY URBAN TRANSPORTATION LINE-3 PROJECT					
DRAWN:	DATE: May 2014	RECEIVED BY:	SUBMITTED BY:	CHECKED BY:	PAGE: 7/15
DESIGNED:	SCALE: S=1:4,000	TEAM LEADER/URBAN RAILWAY PLANNING	CIVIL AND FACILITY PLANNING	APPROVED BY:	

REMARKS:  
Alignment of 4th Panama Canal Bridge (1 of 5)



# Alignment of 4th Panama Canal Bridge (2 of 5)

S=1:4,000



NAME	STATION	X	Y	CURVE	LENGTH
KE4-1	1K359.160	991,179.370386	658,896.898827	A=212.501000	83.623
KE4-2	1K758.277	990,824.838986	658,734.168187	R=540.000000	399.117
KA5-1	1K972.351	990,697.430323	658,562.602074	A=340.000000	214.074
KE5-1	2K225.658	990,552.179014	658,355.259721	A=527.861300	253.307
KE5-2	2K872.020	990,022.481039	658,001.253609	R=1,100.000000	646.362
KA6-1	2K928.388	989,968.282476	657,985.770514	A=249.008500	56.368

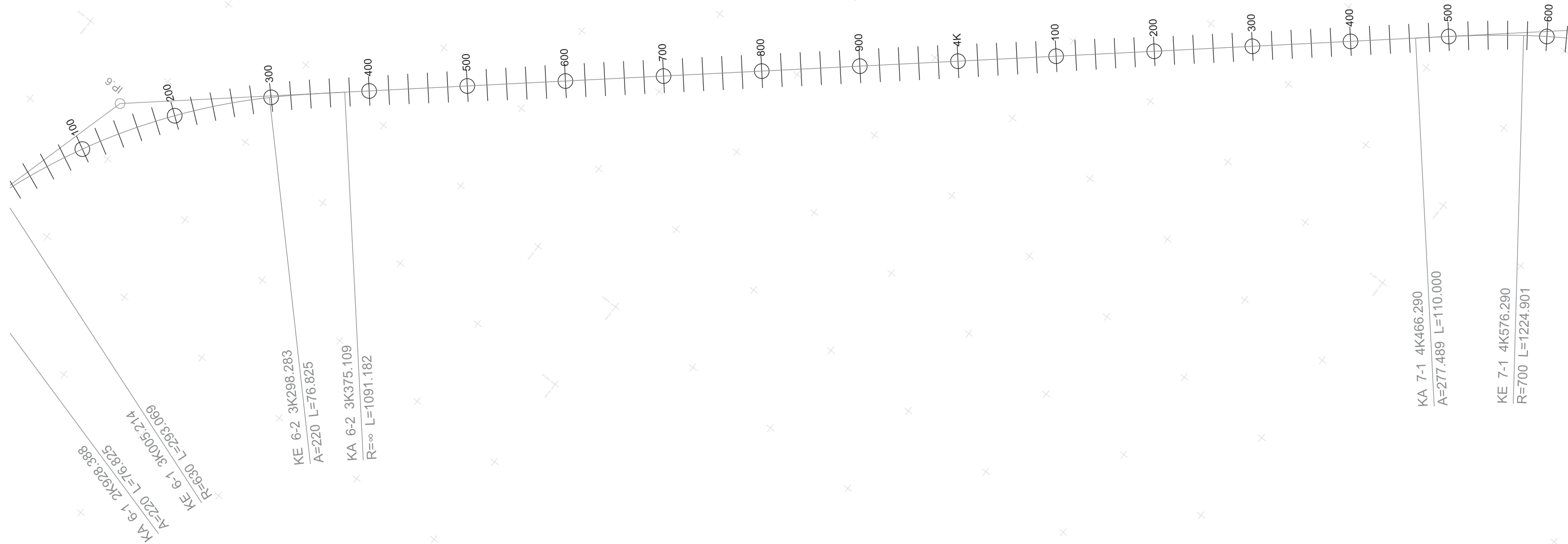
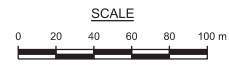


THE FEASIBILITY STUDY ON PANAMA CITY URBAN TRANSPORTATION LINE-3 PROJECT					
DRAWN:	DATE: May 2014	RECEIVED BY:	SUBMITTED BY:	CHECKED BY:	PAGE: 8
DESIGNED:	SCALE: S=1:4,000	TEAM LEADER/URBAN RAILWAY PLANNING	CIVIL AND FACILITY PLANNING	APPROVED BY:	15

REMARKS:  
Alignment of 4th Panama Canal Bridge (2 of 5)

# Alignment of 4th Panama Canal Bridge (3 of 5) S=1:4,000

NAME	STATION	X	Y	CURVE	LENGTH
KE6-1	3K005.214	989,894.678160	657,963.802445	R=630.000000	293.069
KE6-2	3K298.283	989,649.115259	657,808.719611	A=220.000000	76.825
KA6-2	3K375.109	989,597.647590	657,751.699698	R=∞	1,091.182
KA7-1	4K466.290	988,883.123222	656,926.998466	A=277.489000	110.000
KE7-1	4K576.290	988,813.314094	656,842.027337		



SECRETARIA DEL METRO DE PANAMÁ



JAPAN INTERNATIONAL COOPERATION AGENCY

## THE FEASIBILITY STUDY ON PANAMA CITY URBAN TRANSPORTATION LINE-3 PROJECT

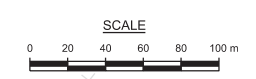
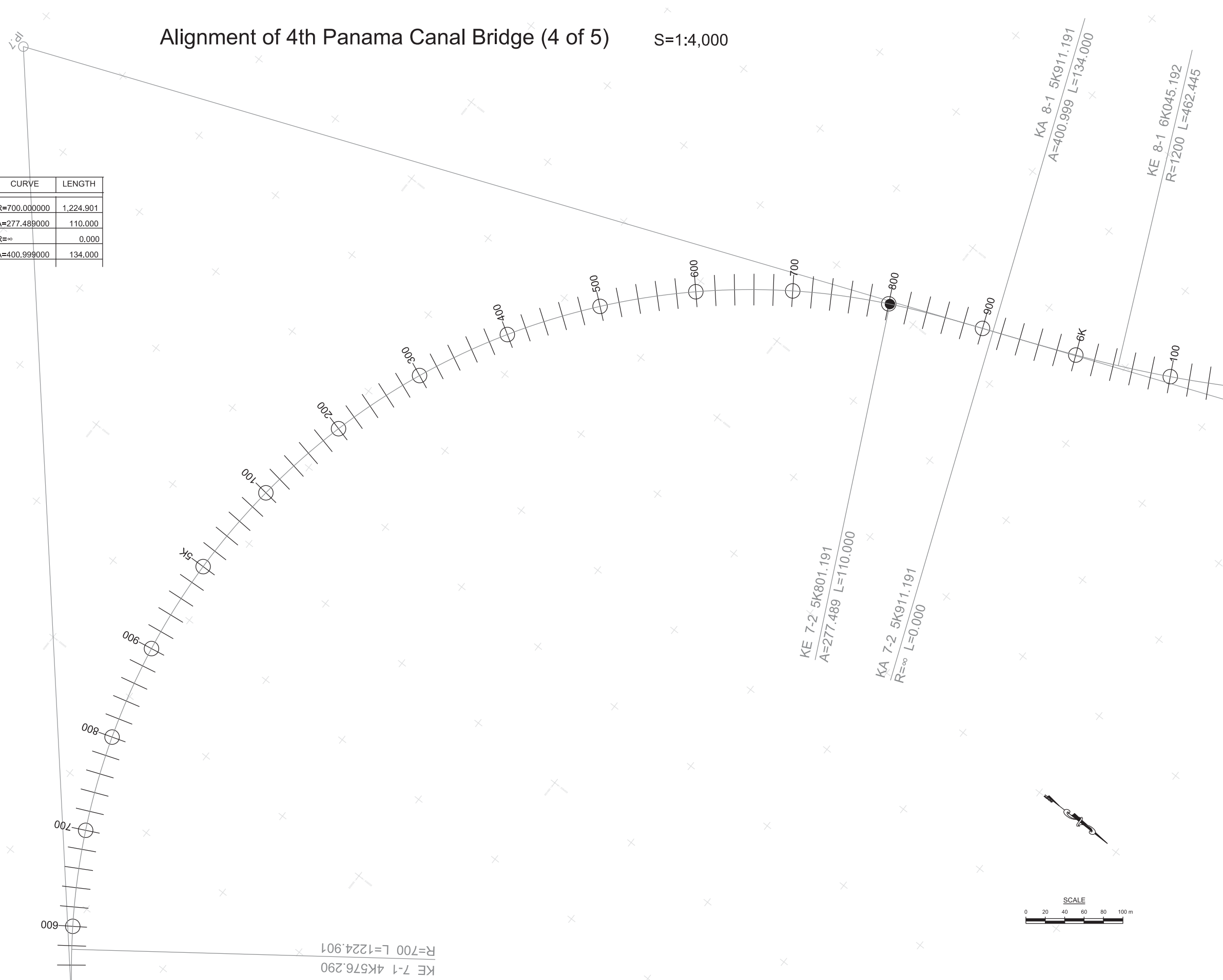
DRAWN:	DATE: May 2014	RECEIVED BY:	SUBMITTED BY:	CHECKED BY:	PAGE: 9
DESIGNED:	SCALE: S=1:4,000	TEAM LEADER/URBAN RAILWAY PLANNING	CIVIL AND FACILITY PLANNING	APPROVED BY:	15

REMARKS:  
Alignment of 4th Panama Canal Bridge (3 of 5)

# Alignment of 4th Panama Canal Bridge (4 of 5)

S=1:4,000

NAME	STATION	X	Y	CURVE	LENGTH
KE7-1	4K576.290	988,813.314094	656,842.027337	R=700.000000	1,224.901
KE7-2	5K801.191	989,068.265953	655,798.214949	A=277.489000	110.000
KA7-2	5K911.191	989,169.386219	655,754.993436	R=∞	0.000
KA8-1	5K911.191	989,169.386219	655,754.993436	A=400.999000	134.000
KE8-1	6K045.192	989,292.981275	655,703.269829		

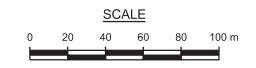
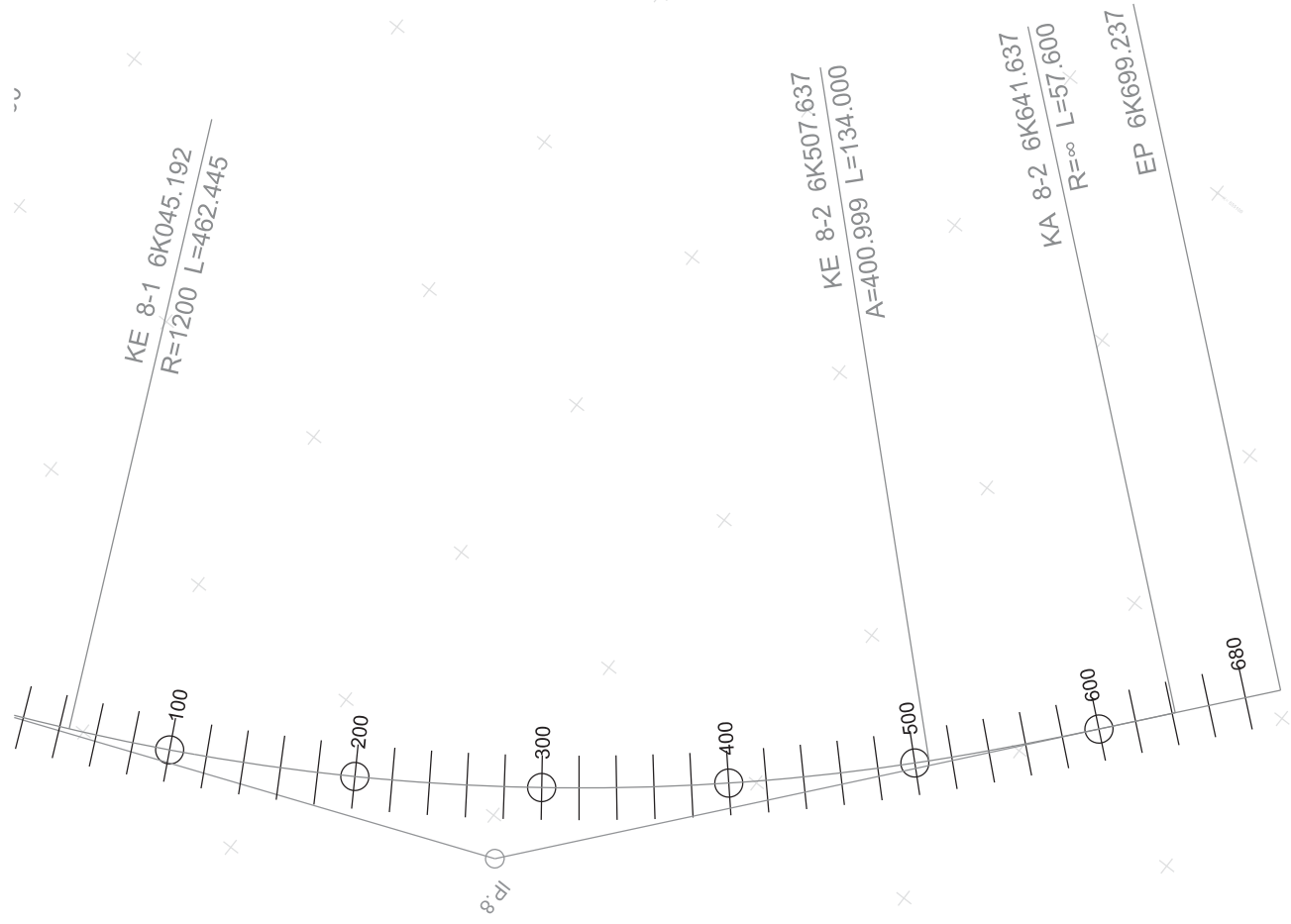


THE FEASIBILITY STUDY ON PANAMA CITY URBAN TRANSPORTATION LINE-3 PROJECT					
DRAWN:	DATE: May 2014	RECEIVED BY:	SUBMITTED BY:	CHECKED BY:	PAGE: 10/15
DESIGNED:	SCALE: S=1:4,000	TEAM LEADER/URBAN RAILWAY PLANNING	CIVIL AND FACILITY PLANNING	APPROVED BY:	

REMARKS:  
Alignment of 4th Panama Canal Bridge (4 of 5)

# Alignment of 4th Panama Canal Bridge (5 of 5) S=1:4,000

NAME	STATION	X	Y	CURVE	LENGTH
KE8-1	6K045.192	989,292.981275	655,703.269829	R=1,200.000000	462.445
KE8-2	6K507.637	989,665.353268	655,433.898538		
KA8-2	6K641.637	989,753.156916	655,332.697804	A=400.999000	134.000
EP	6K699.237	989,790.088376	655,288.495685	R=∞	57.600

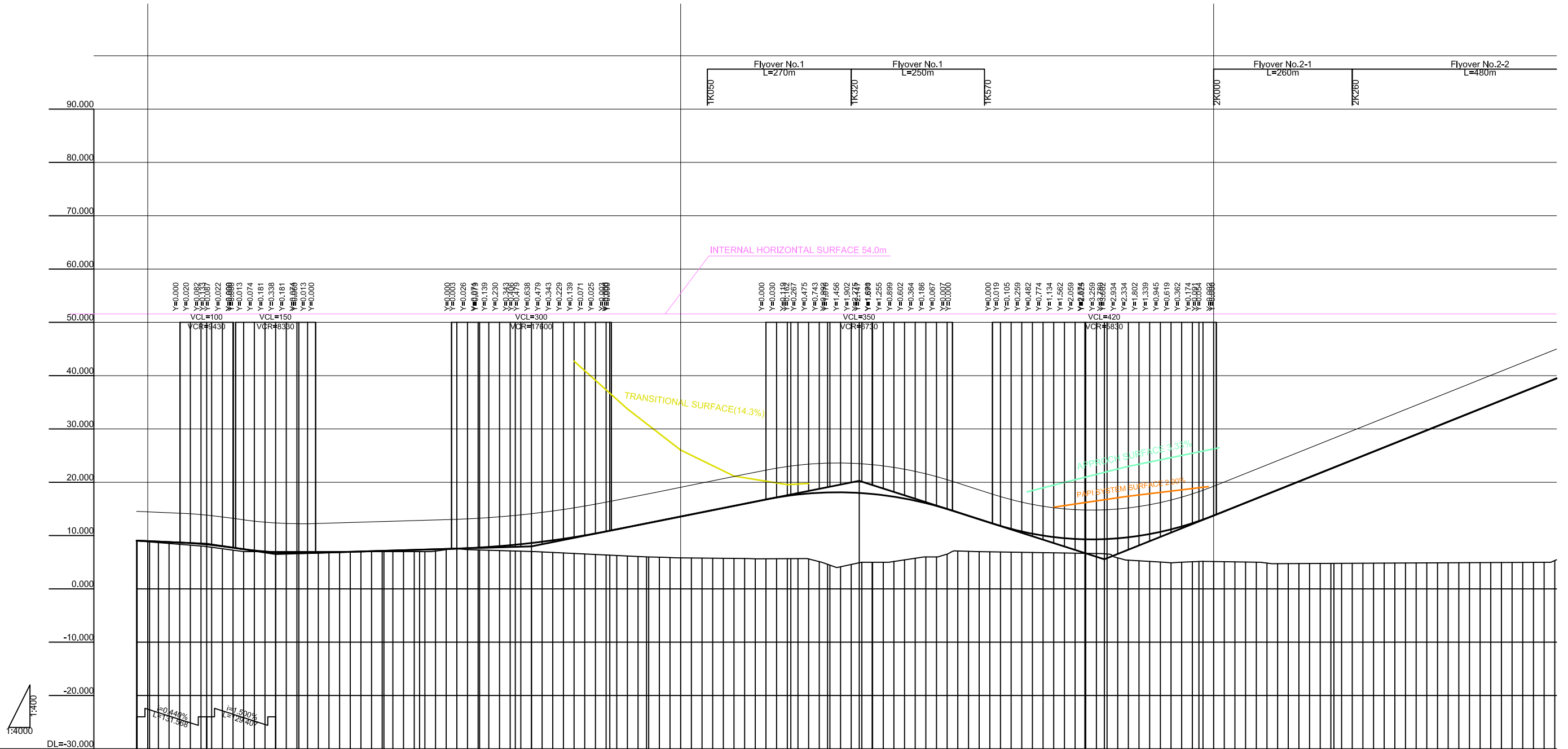


THE FEASIBILITY STUDY ON PANAMA CITY URBAN TRANSPORTATION LINE-3 PROJECT					
DRAWN:	DATE: May 2014	RECEIVED BY:	SUBMITTED BY:	CHECKED BY:	PAGE:
DESIGNED:	SCALE: S=1:4,000	TEAM LEADER/URBAN RAILWAY PLANNING	CIVIL AND FACILITY PLANNING	APPROVED BY:	11/15

REMARKS:  
**Alignment of 4th Panama Canal Bridge (5 of 5)**

# Profile of 4th Panama Canal Bridge (1 of 3)

V=1:400  
H=1:4000

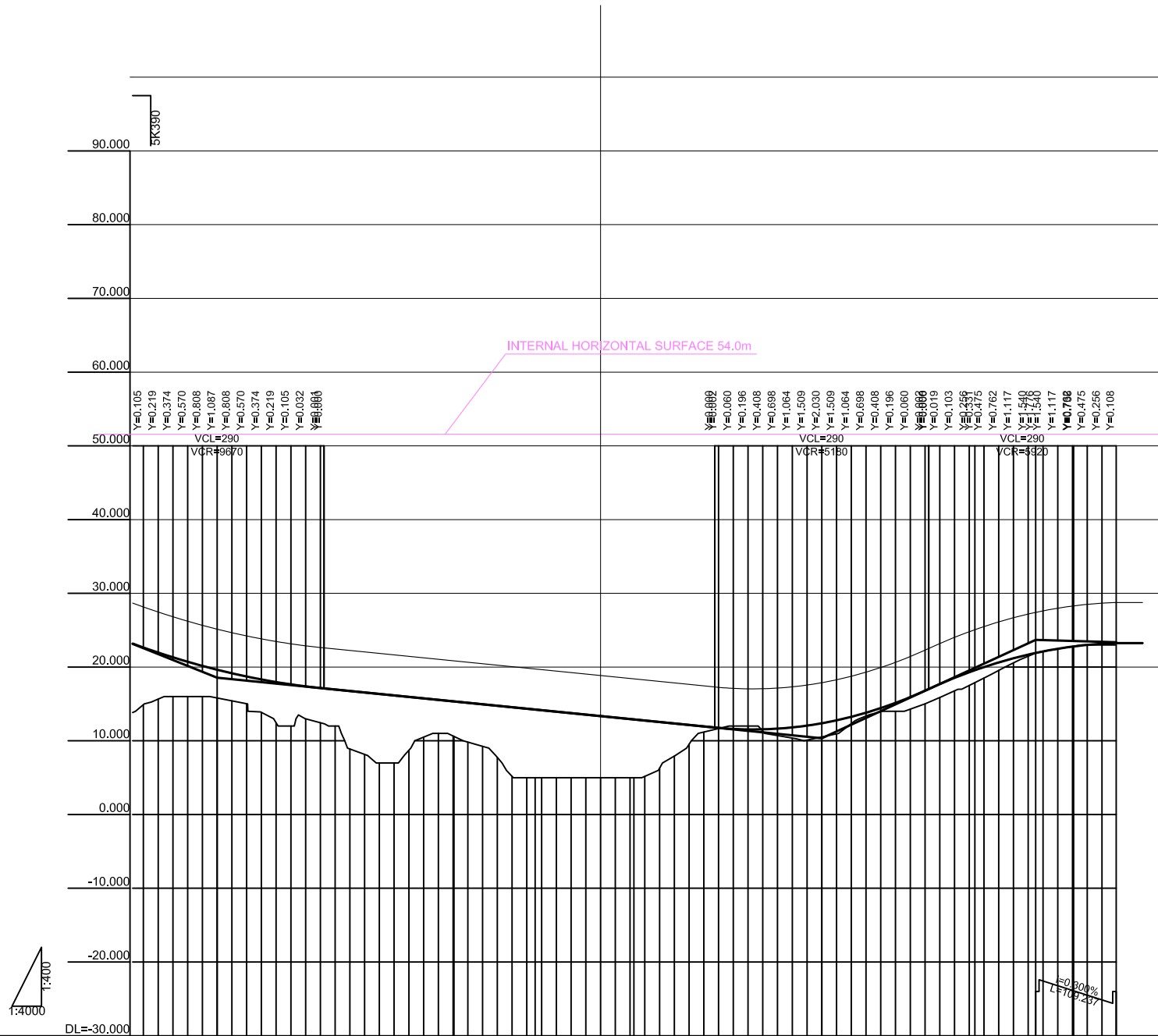


Gradient	Proposed Height	Ground Height	Station	Curve	Superelevation
9.050	9.046	8.002	600.000	R=160.000 L=241.367	2.000
8.471	8.878	8.878	600.000	R=5000.000 L=280.116	2.000
6.530	8.694	8.514	600.000	R=∞ L=159.596	2.000
7.970	8.596	8.196	600.000	L=67.000 R=500.000	2.000
20.270	8.436	8.036	600.000	L=112.553 R=500.000	2.000
5.550	8.243	7.797	600.000	L=57.118 R=159.167	2.000
	8.006	7.553	600.000	L=177.279 R=300.000	2.000
	7.730	7.270	600.000	R=63.172 L=66.789	2.000
	7.444	7.000	600.000	R=435.000 L=270.306	2.000
	7.204	6.800	600.000	L=172.983 R=100.000	2.000
	7.012	6.608	600.000	L=83.623 R=212.501	2.000
	6.868	6.468	600.000	L=399.117 R=540.000	2.000
	6.772	6.372	600.000	L=214.074 R=300.000	2.000
	6.720	6.320	600.000	A=527.861 L=253.307	2.000
	6.770	6.370	600.000	R=1100.000 L=646.362	2.000
	6.830	6.430	600.000		2.000
	6.890	6.490	600.000		2.000
	6.950	6.550	600.000		2.000
	7.010	6.610	600.000		2.000
	7.070	6.670	600.000		2.000
	7.130	6.730	600.000		2.000
	7.188	6.788	600.000		2.000
	7.250	6.850	600.000		2.000
	7.318	6.918	600.000		2.000
	7.370	6.970	600.000		2.000
	7.430	7.030	600.000		2.000
	7.490	7.090	600.000		2.000
	7.553	7.153	600.000		2.000
	7.616	7.216	600.000		2.000
	7.677	7.277	600.000		2.000
	7.741	7.341	600.000		2.000
	7.804	7.404	600.000		2.000
	7.866	7.466	600.000		2.000
	7.928	7.528	600.000		2.000
	8.020	7.620	600.000		2.000
	8.103	7.703	600.000		2.000
	8.186	7.786	600.000		2.000
	8.269	7.869	600.000		2.000
	8.352	7.952	600.000		2.000
	8.435	8.035	600.000		2.000
	8.518	8.118	600.000		2.000
	8.601	8.201	600.000		2.000
	8.684	8.284	600.000		2.000
	8.767	8.367	600.000		2.000
	8.850	8.450	600.000		2.000
	8.933	8.533	600.000		2.000
	9.016	8.616	600.000		2.000
	9.099	8.699	600.000		2.000
	9.182	8.782	600.000		2.000
	9.265	8.865	600.000		2.000
	9.348	8.948	600.000		2.000
	9.431	9.031	600.000		2.000
	9.514	9.114	600.000		2.000
	9.597	9.197	600.000		2.000
	9.680	9.280	600.000		2.000
	9.763	9.363	600.000		2.000
	9.846	9.446	600.000		2.000
	9.929	9.529	600.000		2.000
	10.012	9.612	600.000		2.000
	10.095	9.695	600.000		2.000
	10.178	9.778	600.000		2.000
	10.261	9.861	600.000		2.000
	10.344	9.944	600.000		2.000
	10.427	10.027	600.000		2.000
	10.510	10.110	600.000		2.000
	10.593	10.193	600.000		2.000
	10.676	10.276	600.000		2.000
	10.759	10.359	600.000		2.000
	10.842	10.442	600.000		2.000
	10.925	10.525	600.000		2.000
	11.008	10.608	600.000		2.000
	11.091	10.691	600.000		2.000
	11.174	10.774	600.000		2.000
	11.257	10.857	600.000		2.000
	11.340	10.940	600.000		2.000
	11.423	11.023	600.000		2.000
	11.506	11.106	600.000		2.000
	11.589	11.189	600.000		2.000
	11.672	11.272	600.000		2.000
	11.755	11.355	600.000		2.000
	11.838	11.438	600.000		2.000
	11.921	11.521	600.000		2.000
	12.004	11.604	600.000		2.000
	12.087	11.687	600.000		2.000
	12.170	11.770	600.000		2.000
	12.253	11.853	600.000		2.000
	12.336	11.936	600.000		2.000
	12.419	12.019	600.000		2.000
	12.502	12.102	600.000		2.000
	12.585	12.185	600.000		2.000
	12.668	12.268	600.000		2.000
	12.751	12.351	600.000		2.000
	12.834	12.434	600.000		2.000
	12.917	12.517	600.000		2.000
	13.000	12.600	600.000		2.000
	13.083	12.683	600.000		2.000
	13.166	12.766	600.000		2.000
	13.249	12.849	600.000		2.000
	13.332	12.932	600.000		2.000
	13.415	13.015	600.000		2.000
	13.498	13.098	600.000		2.000
	13.581	13.181	600.000		2.000
	13.664	13.264	600.000		2.000
	13.747	13.347	600.000		2.000
	13.830	13.430	600.000		2.000
	13.913	13.513	600.000		2.000
	14.000	13.600	600.000		2.000
	14.083	13.683	600.000		2.000
	14.166	13.766	600.000		2.000
	14.249	13.849	600.000		2.000
	14.332	13.932	600.000		2.000
	14.415	14.015	600.000		2.000
	14.498	14.098	600.000		2.000
	14.581	14.181	600.000		2.000
	14.664	14.264	600.000		2.000
	14.747	14.347	600.000		2.000
	14.830	14.430	600.000		2.000
	14.913	14.513	600.000		2.000
	15.000	14.600	600.000		2.000
	15.083	14.683	600.000		2.000
	15.166	14.766	600.000		2.000
	15.249	14.849	600.000		2.000
	15.332	14.932	600.000		2.000
	15.415	15.015	600.000		2.000
	15.498	15.098	600.000		2.000
	15.581	15.181	600.000		2.000
	15.664	15.264	600.000		2.000
	15.747	15.347	600.000		2.000
	15.830	15.430	600.000		2.000
	15.913	15.513	600.000		2.000
	16.000	15.600	600.000		2.000
	16.083	15.683	600.000		2.000
	16.166	15.766	600.000		2.000
	16.249	15.849	600.000		2.000
	16.332	15.932	600.000		2.000
	16.415	16.015	600.000		2.000
	16.498	16.098	600.000		2.000
	16.581	16.181	600.000		2.000
	16.664	16.264	600.000		2.000
	16.747	16.347	600.000		2.000
	16.830	16.430	600.000		2.000
	16.913	16.513	600.000		2.000
	17.000	16.600	600.000		2.000
	17.083	16.683	600.000		2.000
	17.166	16.766	600.000		2.000
	17.249	16.849	600.000		2.000
	17.332	16.932	600.000		2.000
	17.415	17.015	600.000		2.000
	17.498	17.098	600.000		2.000
	17.581	17.181	600.000		2.000
	17.664	17.264	600.000		2.000
	17.747	17.347	600.000		2.000
	17.830	17.430	600.000		2.000
	17.913	17.513	600.000		2.000
	18.000	17.600	600.000		2.000
	18.083	17.683	600.000		2.000
	18.166	17.766	600.000		2.000
	18.249	17.849	600.000		2.000
	18.332	17.932	600.000		2.000
	18.415	18.015	600.000		2.000
	18.498	18.098	600.000		2.000
	18.581	18.181	600.000		2.000
	18.664	18.264	600.000		2.000
	18.747	18.347	600.000		2.000
	18.830	18.430	600.000		2.000
	18.913	18.513	600.000		2.000
	19.000	18.600	600.000		2.000
	19.083	18.683	600.000		2.000
	19.166	18.766	600.000		2.000
	19.249	18.849	600.000		2.000
	19.332	18.932	600.000		2.000
	19.415	19.015	600.000		2.000
	19.498	19.098	600.000		2.000
	19.581	19.181	600.000		2.000
	19.664	19.264	600.000		2.000
	19.747	19.347	600.000		2.000
	19.830	19.430	600.000		2.000
	19.				



# Profile of 4th Panama Canal Bridge (3 of 3)

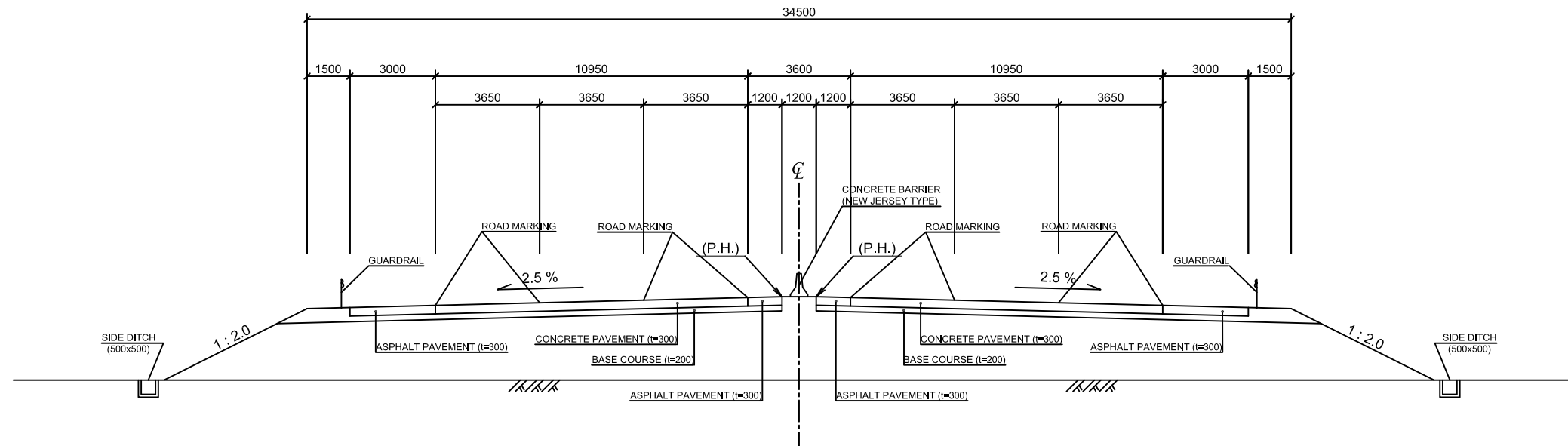
V=1: 400  
H=1:4000



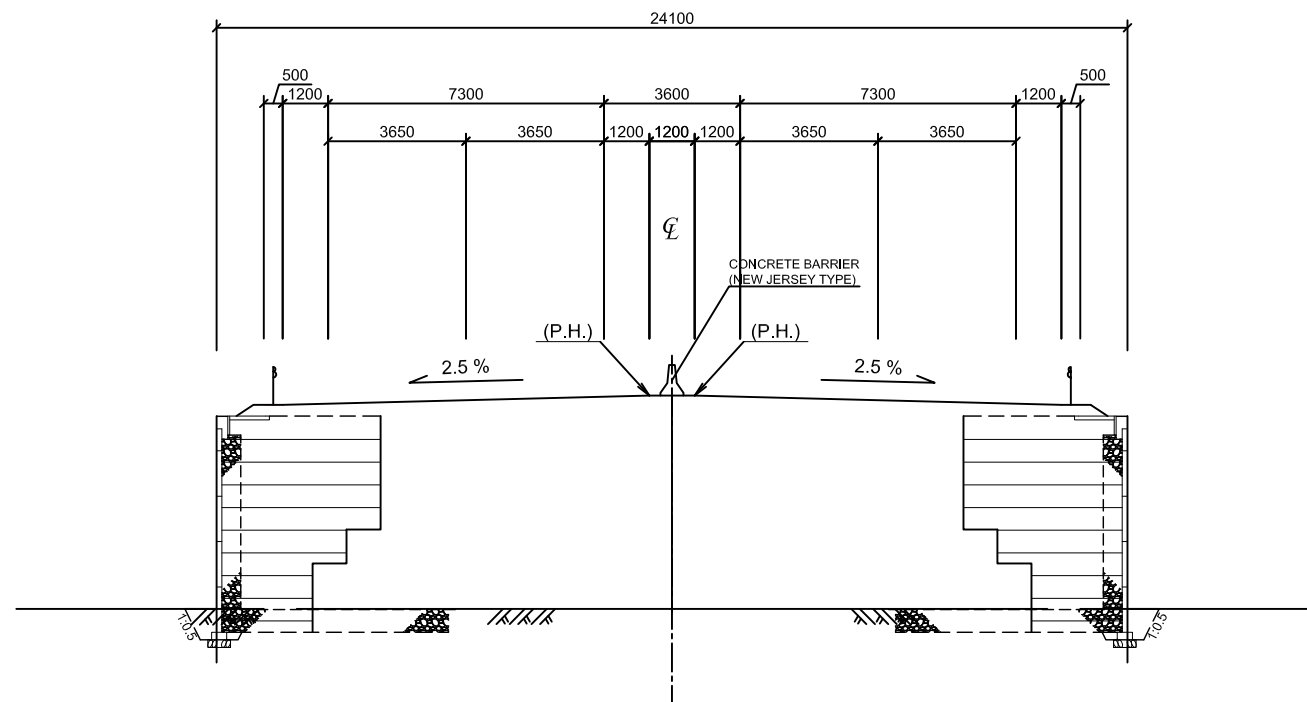
Gradient	Proposed Height	Ground Height	Station	Curve	Superelevation
18.550	22.655	14.905	380.000	L=110.000 R=∞ A=277.469 L=134.000	8.400 6.400
	21.989	15.656	400.000		
	21.324	16.000	420.000	R=1200.000 L=462.445	4.200 4.200
	20.720	16.000	440.000		
	20.158	16.000	460.000	A=400.989 L=134.000	4.200 4.200
	19.638	15.808	480.000		
	19.158	15.417	500.000	R=∞ L=57.600	2.000 2.000
	18.720	15.026	520.000		
	18.324	14.635	540.000		
	17.969	14.243	560.000		
	17.655	13.852	580.000		
	17.382	13.461	600.000		
	17.151	13.070	620.000		
	16.950	12.679	640.000		
	16.750	12.288	660.000		
	16.550	11.897	680.000		
	16.350	11.506	700.000		
	16.150	11.115	720.000		
	15.950	10.724	740.000		
	15.750	10.333	760.000		
	15.550	9.942	780.000		
	15.350	9.551	800.000		
	15.150	9.160	820.000		
	14.950	8.769	840.000		
	14.750	8.378	860.000		
	14.550	7.987	880.000		
	14.350	7.596	900.000		
	14.150	7.205	920.000		
	13.950	6.814	940.000		
	13.750	6.423	960.000		
	13.550	6.032	980.000		
	13.350	5.641	1000.000		
	13.150	5.250	1020.000		
	12.950	4.859	1040.000		
	12.750	4.468	1060.000		
	12.550	4.077	1080.000		
	12.350	3.686	1100.000		
	12.150	3.295	1120.000		
	11.950	2.904	1140.000		
	11.750	2.513	1160.000		
	11.550	2.122	1180.000		
	11.350	1.731	1200.000		
	11.150	1.340	1220.000		
	10.950	0.949	1240.000		
	10.750	0.558	1260.000		
	10.550	0.167	1280.000		
	10.350	-0.224	1300.000		
	10.150	-0.633	1320.000		
	9.950	-1.042	1340.000		
	9.750	-1.451	1360.000		
	9.550	-1.860	1380.000		
	9.350	-2.269	1400.000		
	9.150	-2.678	1420.000		
	8.950	-3.087	1440.000		
	8.750	-3.496	1460.000		
	8.550	-3.905	1480.000		
	8.350	-4.314	1500.000		
	8.150	-4.723	1520.000		
	7.950	-5.132	1540.000		
	7.750	-5.541	1560.000		
	7.550	-5.950	1580.000		
	7.350	-6.359	1600.000		
	7.150	-6.768	1620.000		
	6.950	-7.177	1640.000		
	6.750	-7.586	1660.000		
	6.550	-7.995	1680.000		
	6.350	-8.404	1700.000		
	6.150	-8.813	1720.000		
	5.950	-9.222	1740.000		
	5.750	-9.631	1760.000		
	5.550	-10.040	1780.000		
	5.350	-10.449	1800.000		
	5.150	-10.858	1820.000		
	4.950	-11.267	1840.000		
	4.750	-11.676	1860.000		
	4.550	-12.085	1880.000		
	4.350	-12.494	1900.000		
	4.150	-12.903	1920.000		
	3.950	-13.312	1940.000		
	3.750	-13.721	1960.000		
	3.550	-14.130	1980.000		
	3.350	-14.539	2000.000		
	3.150	-14.948	2020.000		
	2.950	-15.357	2040.000		
	2.750	-15.766	2060.000		
	2.550	-16.175	2080.000		
	2.350	-16.584	2100.000		
	2.150	-16.993	2120.000		
	1.950	-17.402	2140.000		
	1.750	-17.811	2160.000		
	1.550	-18.220	2180.000		
	1.350	-18.629	2200.000		
	1.150	-19.038	2220.000		
	0.950	-19.447	2240.000		
	0.750	-19.856	2260.000		
	0.550	-20.265	2280.000		
	0.350	-20.674	2300.000		
	0.150	-21.083	2320.000		
	0.000	-21.492	2340.000		
	-0.150	-21.901	2360.000		
	-0.350	-22.310	2380.000		
	-0.550	-22.719	2400.000		
	-0.750	-23.128	2420.000		
	-0.950	-23.537	2440.000		
	-1.150	-23.946	2460.000		
	-1.350	-24.355	2480.000		
	-1.550	-24.764	2500.000		
	-1.750	-25.173	2520.000		
	-1.950	-25.582	2540.000		
	-2.150	-25.991	2560.000		
	-2.350	-26.400	2580.000		
	-2.550	-26.809	2600.000		
	-2.750	-27.218	2620.000		
	-2.950	-27.627	2640.000		
	-3.150	-28.036	2660.000		
	-3.350	-28.445	2680.000		
	-3.550	-28.854	2700.000		
	-3.750	-29.263	2720.000		
	-3.950	-29.672	2740.000		
	-4.150	-30.081	2760.000		
	-4.350	-30.490	2780.000		
	-4.550	-30.899	2800.000		
	-4.750	-31.308	2820.000		
	-4.950	-31.717	2840.000		
	-5.150	-32.126	2860.000		
	-5.350	-32.535	2880.000		
	-5.550	-32.944	2900.000		
	-5.750	-33.353	2920.000		
	-5.950	-33.762	2940.000		
	-6.150	-34.171	2960.000		
	-6.350	-34.580	2980.000		
	-6.550	-34.989	3000.000		
	-6.750	-35.398	3020.000		
	-6.950	-35.807	3040.000		
	-7.150	-36.216	3060.000		
	-7.350	-36.625	3080.000		
	-7.550	-37.034	3100.000		
	-7.750	-37.443	3120.000		
	-7.950	-37.852	3140.000		
	-8.150	-38.261	3160.000		
	-8.350	-38.670	3180.000		
	-8.550	-39.079	3200.000		
	-8.750	-39.488	3220.000		
	-8.950	-39.897	3240.000		
	-9.150	-40.306	3260.000		
	-9.350	-40.715	3280.000		
	-9.550	-41.124	3300.000		
	-9.750	-41.533	3320.000		
	-9.950	-41.942	3340.000		
	-10.150	-42.351	3360.000		
	-10.350	-42.760	3380.000		
	-10.550	-43.169	3400.000		
	-10.750	-43.578	3420.000		
	-10.950	-43.987	3440.000		
	-11.150	-44.396	3460.000		
	-11.350	-44.805	3480.000		
	-11.550	-45.214	3500.000		
	-11.750	-45.623	3520.000		
	-11.950	-46.032	3540.000		
	-12.150	-46.441	3560.000		
	-12.350	-46.850	3580.000		
	-12.550	-47.259	3600.000		
	-12.750	-47.668	3620.000		
	-12.950	-48.077	3640.000		
	-13.150	-48.486	3660.000		
	-13.350	-48.895	3680.000		
	-13.550	-49.304	3700.000		
	-13.750	-49.713	3720.000		
	-13.950	-50.122	3740.000		
	-14.150	-50.531	3760.000		
	-14.350	-50.940	3780.000		
	-14.550	-51.349	3800.000		
	-14.750	-51.758	3820.000		
	-14.950	-52.167	3840.000		
	-15.150	-52.576	3860.000		
	-15.350	-52.985	3880.000		
	-15.550	-53.394	3900.000		
	-15.750	-53.803	3920.000		
	-15.950	-54.212	3940.000		
	-16.150	-54.621	3960.000		
	-16.350	-55.030	3980.000		
	-16.550	-55.439	4000.000		
	-16.750	-55.848	4020.000		
	-16.950	-56.257	4040.000		
	-17.150	-56.666	4060.000		
	-17.350	-57.075	4080.000		
	-17.550	-57.484	4100.000		
	-17.750	-57.893	4120.000		
	-17.950	-58.302	4140.000		
	-18.150	-58.711	4160.000		
	-18.350	-59.120	4180.000		
	-18.550	-59.529	4200.000		
	-18.750	-59.938	4220.000		
	-18.950	-60.347	4240.000		
	-19.150	-60.756	4260.000		
	-19.350	-61.165	4280.000		
	-19.550	-61.574	4300.000		
	-19.750	-61.983	4320.000		
	-19.950	-62.392	4340.000		
	-20.150	-62.801	4360.000		
	-20.350	-63.210	4380.000		

# Typical Cross Sections S=1:200

## EARTH WORK (6 LANE WITHOUT SIDE WALK)



## REINFORCED EARTH (4 LANE WITHOUT SIDE WALK)



SECRETARIA DEL METRO DE PANAMÁ



JAPAN INTERNATIONAL COOPERATION AGENCY

### THE FEASIBILITY STUDY ON PANAMA CITY URBAN TRANSPORTATION LINE-3 PROJECT

DRAWN:  
DESIGNED:

DATE: May 2014  
SCALE: S=1:200

RECEIVED BY:  
TEAM LEADER/URBAN RAILWAY PLANNING

SUBMITTED BY:  
CIVIL AND FACILITY PLANNING

CHECKED BY:  
APPROVED BY:

PAGE: 15/15

REMARKS:

Typical Cross Sections