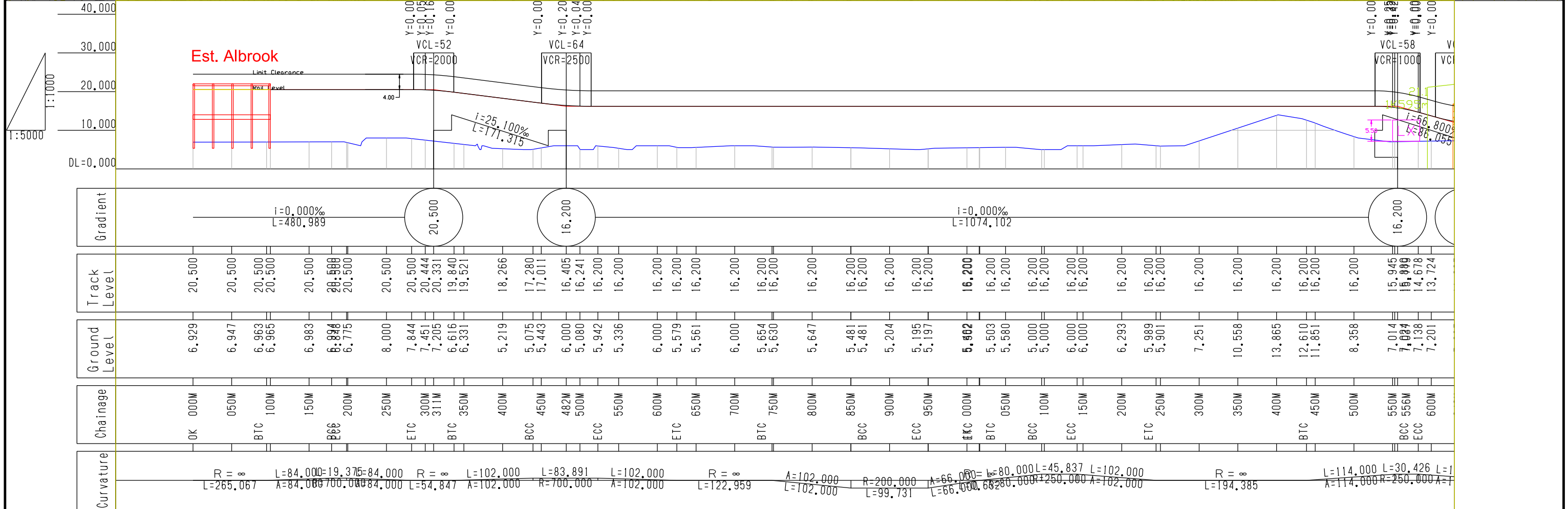
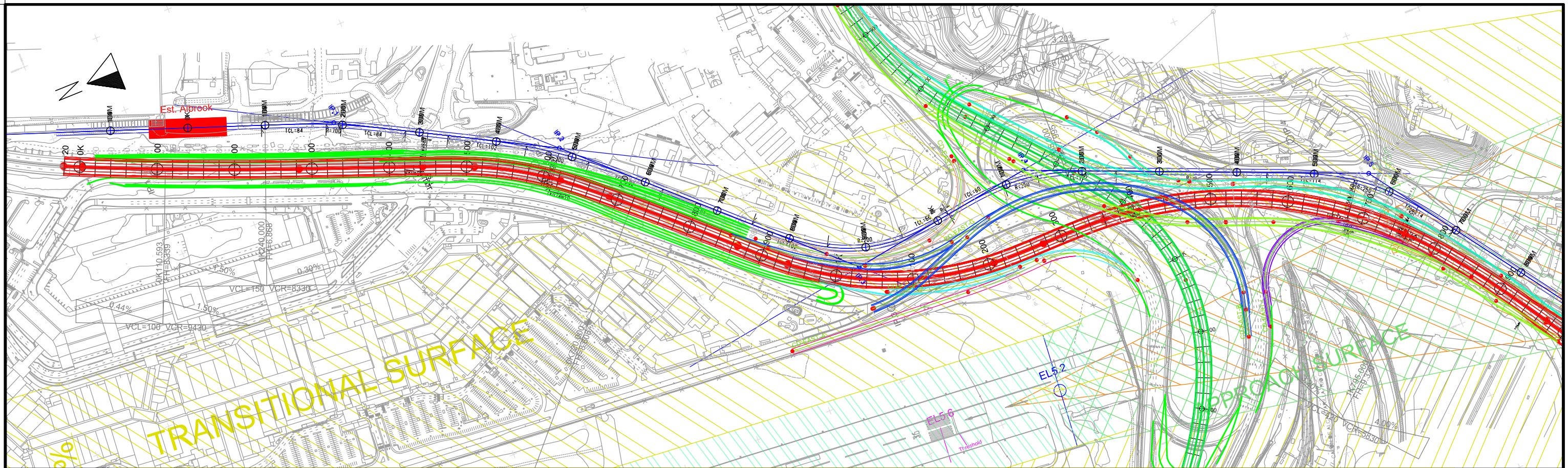


## Appendix 4: Drawings (Line-3)

## 4-1: Plan and Profile



SECRETARIA DEL METRO DE PANAMA



JAPAN INTERNATIONAL COOPERATION AGENCY

THE FEASIBILITY STUDY ON PANAMA CITY URBAN TRANSPORTATION LINE-3 PROJECT

DRAWN: \_\_\_\_\_  
DESIGNED: \_\_\_\_\_

DATE: August 2014  
SCALE(A3): Plan 1:5,000  
Profile 1:5,000(X) and 1:1,000(Y)

RECEIVED BY: \_\_\_\_\_  
TEAM LEADER/URBAN RAILWAY PLANNING

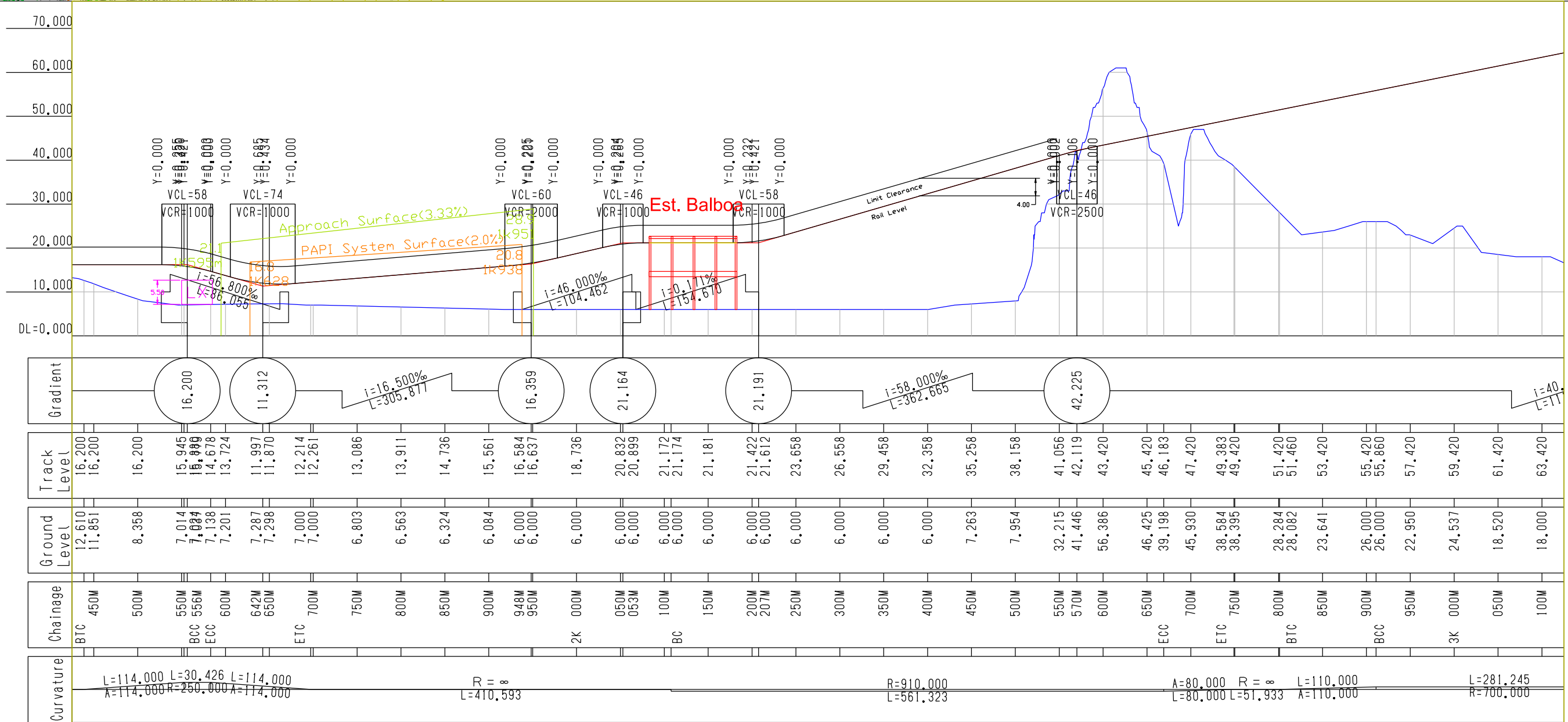
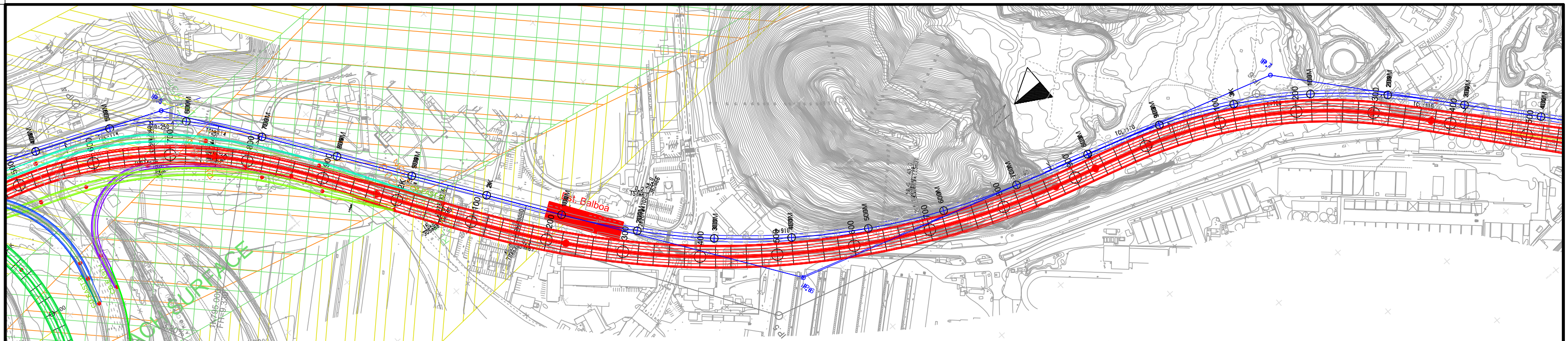
SUBMITTED BY: \_\_\_\_\_  
CIVIL AND FACILITY PLANNING

CHECKED BY: \_\_\_\_\_  
APPROVED BY: \_\_\_\_\_

PAGE: 1  
18

REMARKS:

Alignment Plan(FR)  
(0K000M000 ~ 1K500M000)



SECRETARIA DEL METRO DE PANAMA



JAPAN INTERNATIONAL COOPERATION AGENCY

THE FEASIBILITY STUDY ON PANAMA CITY URBAN TRANSPORTATION LINE-3 PROJECT

DRAWN: \_\_\_\_\_  
DESIGNED: \_\_\_\_\_

DATE: August 2014  
SCALE(A3): Plan 1:5,000  
Profile 1:5,000(X) and 1:1,000(Y)

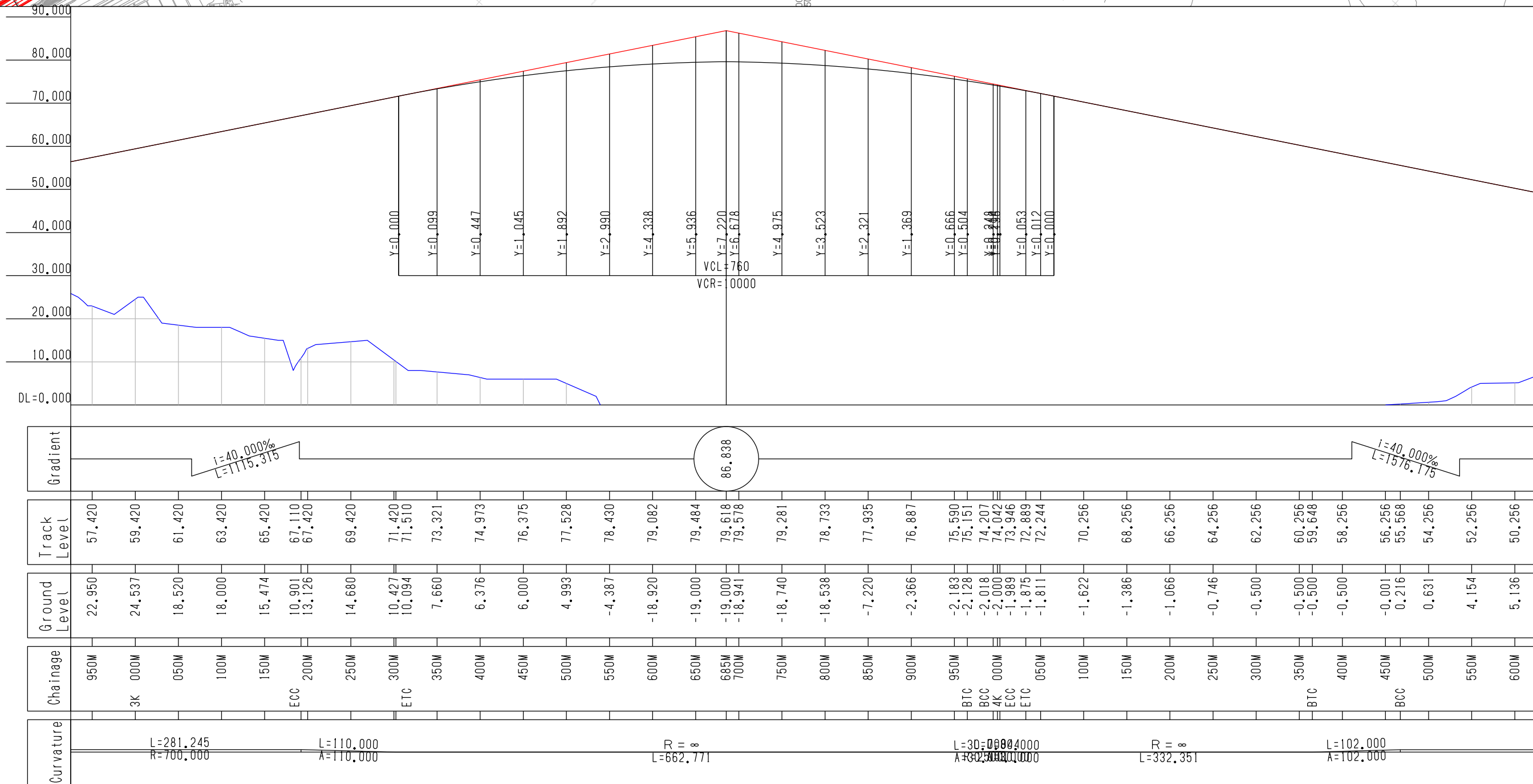
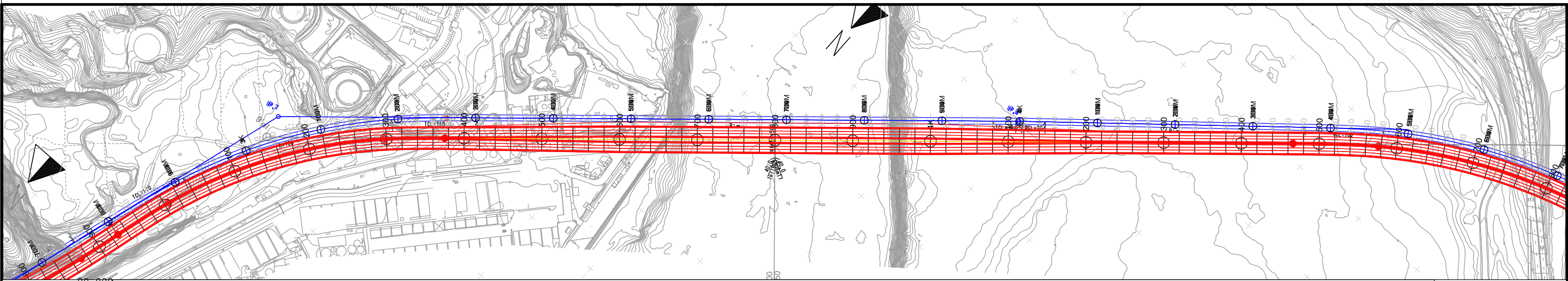
RECEIVED BY: \_\_\_\_\_  
TEAM LEADER/URBAN RAILWAY PLANNING

SUBMITTED BY: \_\_\_\_\_  
CIVIL AND FACILITY PLANNING

CHECKED BY: \_\_\_\_\_  
APPROVED BY: \_\_\_\_\_

PAGE: 2  
18

REMARKS:  
Alignment Plan(FR)  
(1K500M000 ~ 3K000M000)



SECRETARIA DEL METRO DE PANAMA



JAPAN INTERNATIONAL COOPERATION AGENCY

THE FEASIBILITY STUDY ON PANAMA CITY URBAN TRANSPORTATION LINE-3 PROJECT

DRAWN:

DATE: August 2014

RECEIVED BY:

SUBMITTED BY:

CHECKED BY:

PAGE:

DESIGNED:

SCALE(A3): Plan 1:5,000  
Profile 1:5,000(X) and 1:1,000(Y)

TEAM LEADER/URBAN RAILWAY PLANNING

CIVIL AND FACILITY PLANNING

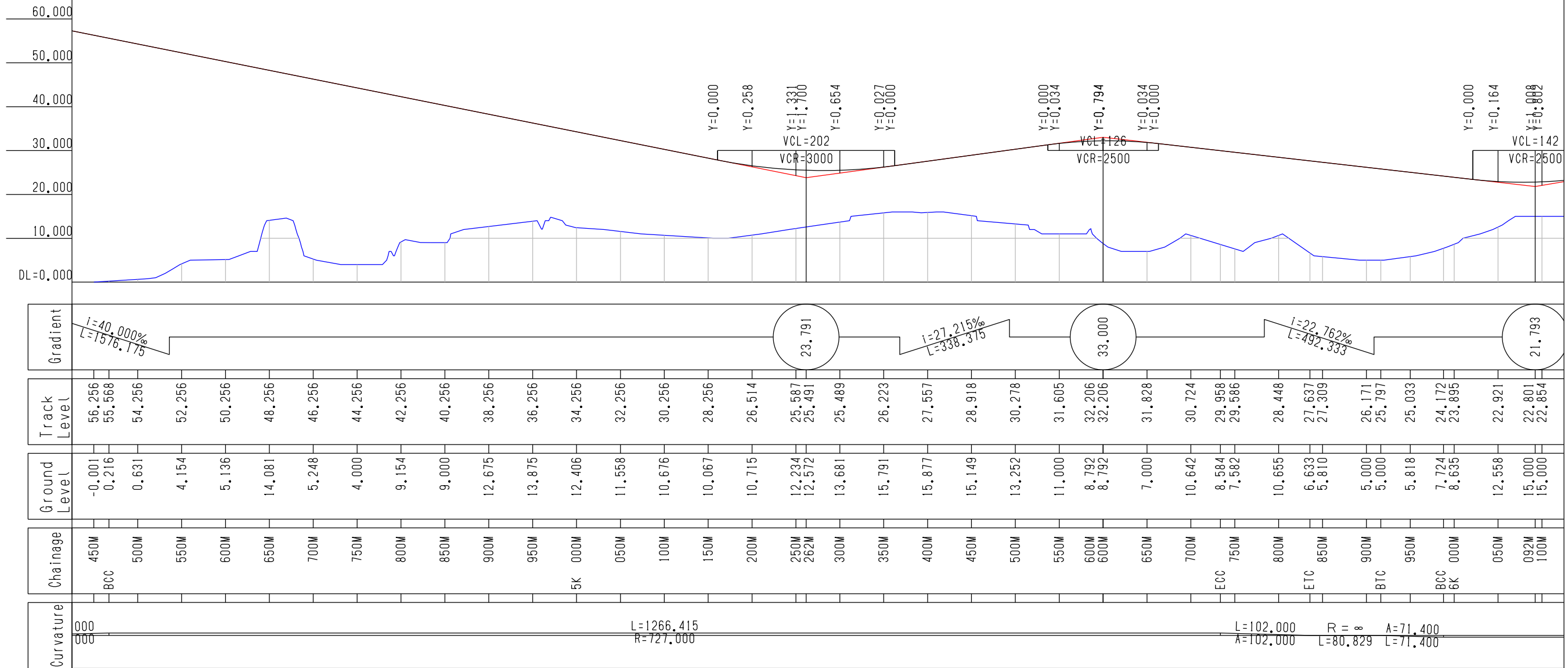
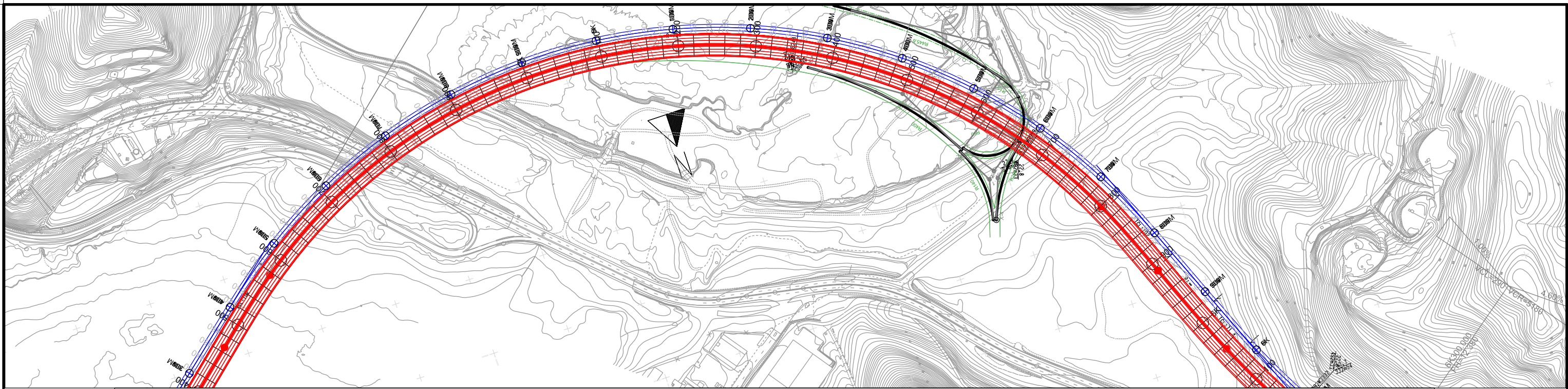
APPROVED BY:

3

18

REMARKS:

Alignment Plan(FR)  
(3K000M000 ~ 4K500M000)



SECRETARIA DEL METRO DE PANAMA



JAPAN INTERNATIONAL COOPERATION AGENCY

THE FEASIBILITY STUDY ON PANAMA CITY URBAN TRANSPORTATION LINE-3 PROJECT

DRAWN: \_\_\_\_\_  
DESIGNED: \_\_\_\_\_

DATE: August 2014  
SCALE(A3): Plan 1:5,000  
Profile 1:5,000(X) and 1:1,000(Y)

RECEIVED BY: \_\_\_\_\_  
TEAM LEADER/URBAN RAILWAY PLANNING

SUBMITTED BY: \_\_\_\_\_  
CIVIL AND FACILITY PLANNING

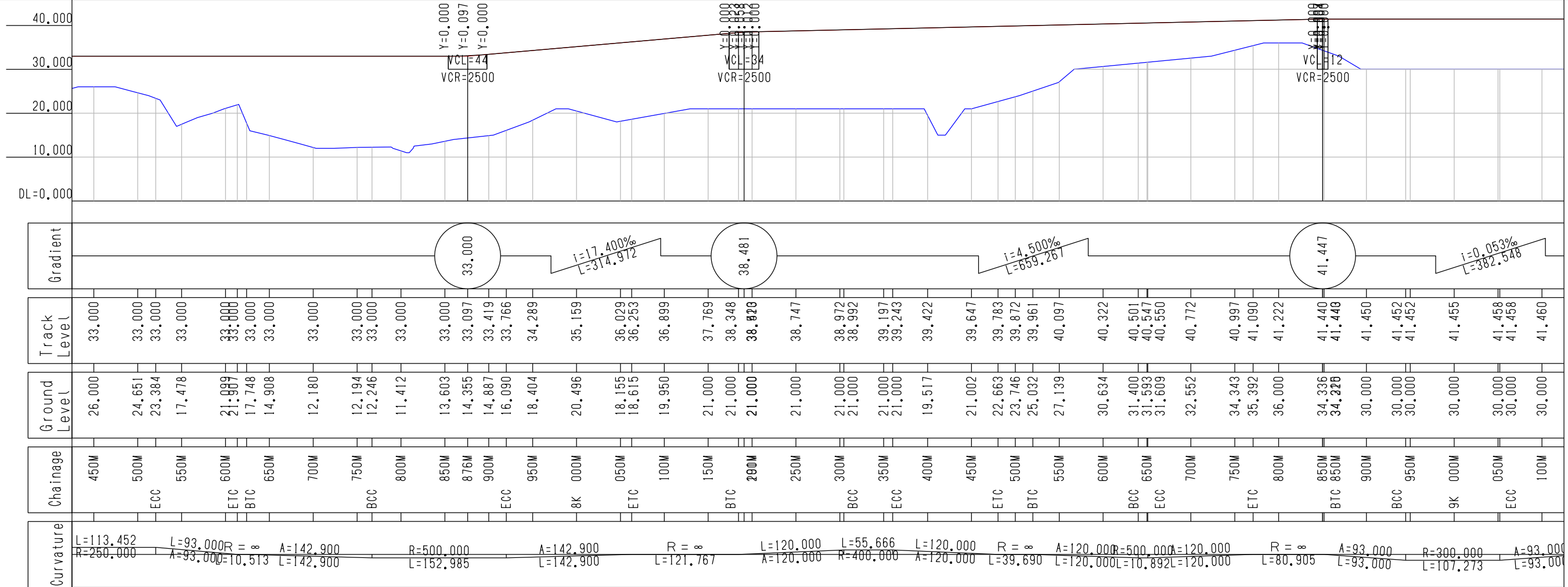
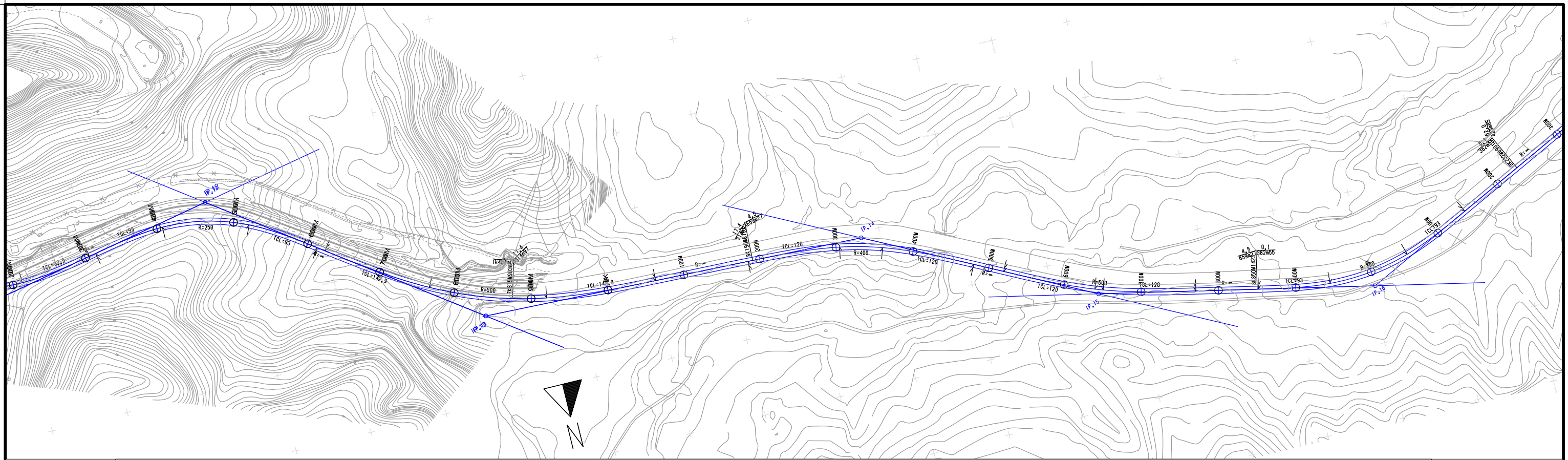
CHECKED BY: \_\_\_\_\_  
APPROVED BY: \_\_\_\_\_

PAGE: 4  
18

REMARKS:

Alignment Plan(FR)  
(4K500M000 ~ 6K000M000)





SECRETARIA DEL METRO DE PANAMA



JAPAN INTERNATIONAL COOPERATION AGENCY

THE FEASIBILITY STUDY ON PANAMA CITY URBAN TRANSPORTATION LINE-3 PROJECT

DRAWN: \_\_\_\_\_  
DESIGNED: \_\_\_\_\_

DATE: August 2014  
SCALE(A3): Plan 1:5,000  
Profile 1:5,000(X) and 1:1,000(Y)

RECEIVED BY: \_\_\_\_\_  
TEAM LEADER/URBAN RAILWAY PLANNING

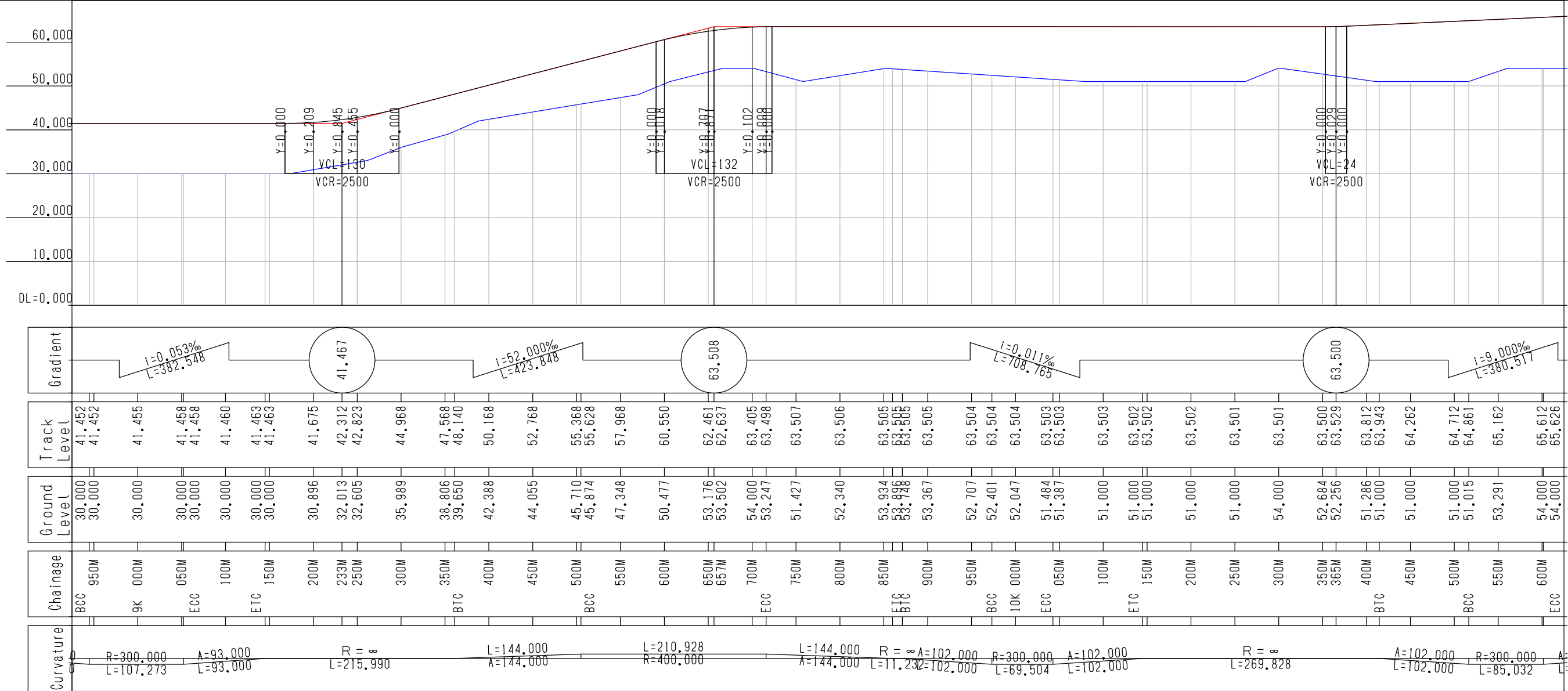
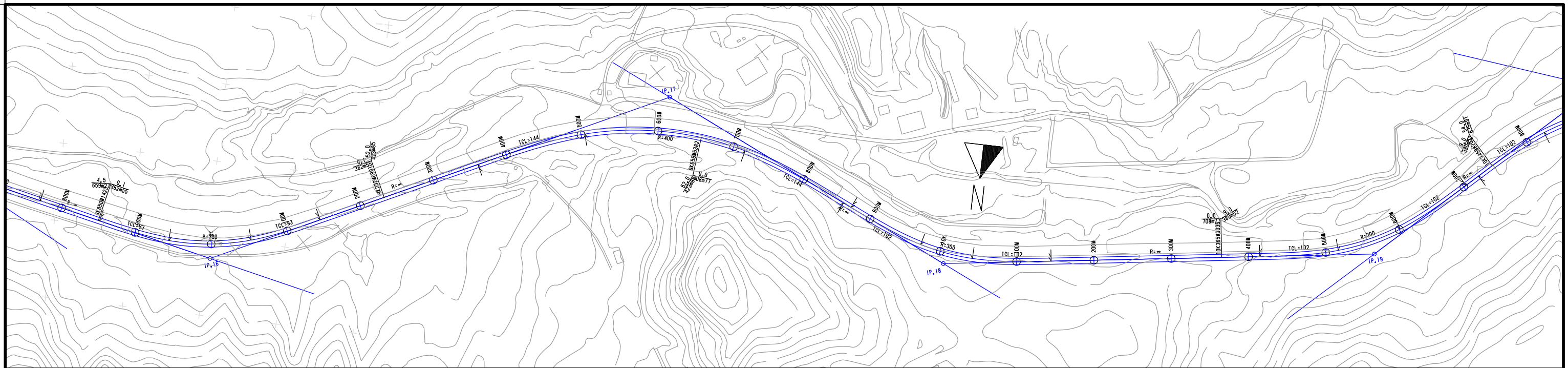
SUBMITTED BY: \_\_\_\_\_  
CIVIL AND FACILITY PLANNING

CHECKED BY: \_\_\_\_\_  
APPROVED BY: \_\_\_\_\_

PAGE: 6  
18

REMARKS:  
Alignment Plan(FR)  
(7K500M000 ~ 9K000M000)





SECRETARIA DEL METRO DE PANAMA



JAPAN INTERNATIONAL COOPERATION AGENCY

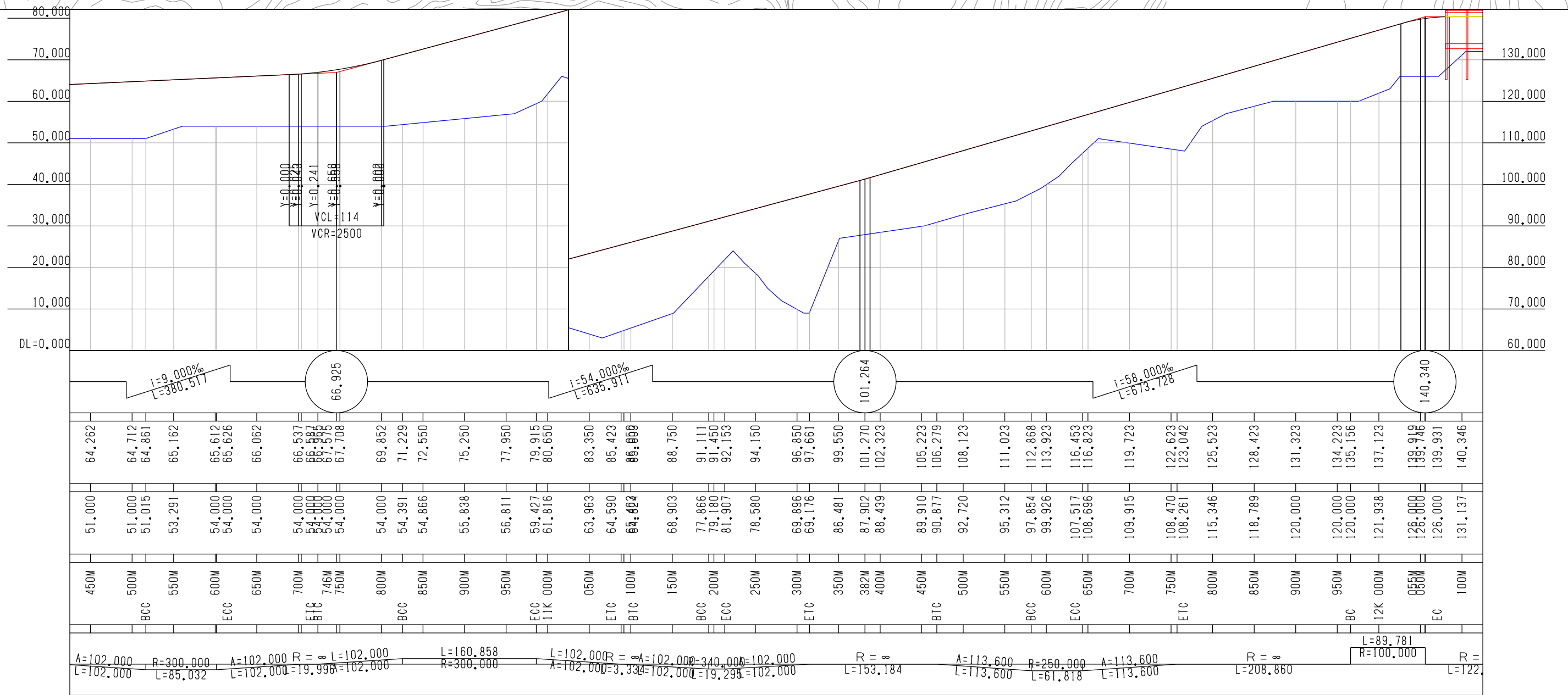
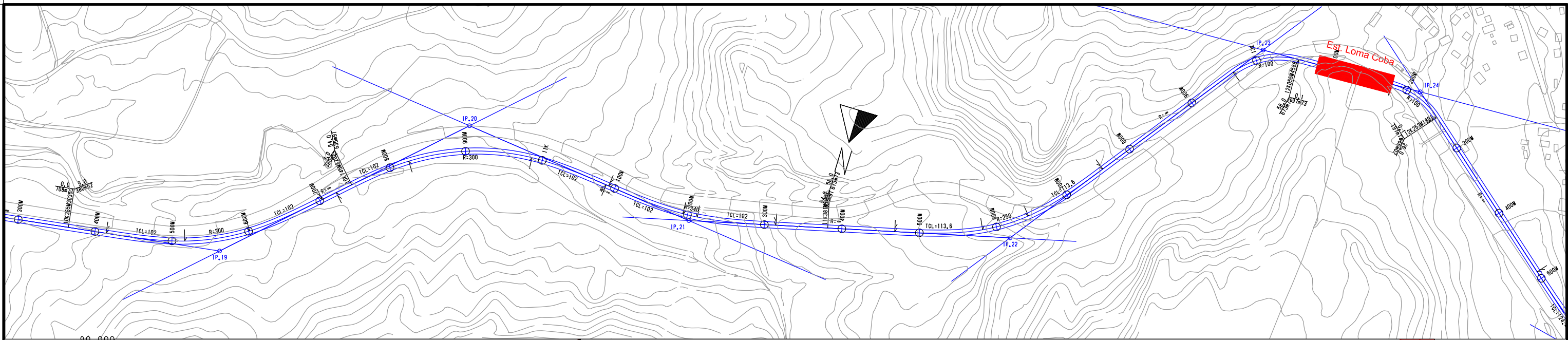
THE FEASIBILITY STUDY ON PANAMA CITY URBAN TRANSPORTATION LINE-3 PROJECT

DRAWN:	DATE: August 2014
DESIGNED:	SCALE(A3): Plan 1:5,000 Profile 1:5,000(X) and 1:1,000(Y)

RECEIVED BY:	SUBMITTED BY:
TEAM LEADER/URBAN RAILWAY PLANNING	CIVIL AND FACILITY PLANNING

CHECKED BY:	PAGE: 7
APPROVED BY:	18

REMARKS:  
Alignment Plan(FR)  
(9K000M000 ~ 10K500M000)



SECRETARIA DEL METRO DE PANAMA



JAPAN INTERNATIONAL COOPERATION AGENCY

THE FEASIBILITY STUDY ON PANAMA CITY URBAN TRANSPORTATION LINE-3 PROJECT

DRAWN:

DATE: August 2014

RECEIVED BY:

SUBMITTED BY:

CHECKED BY:

PAGE:

DESIGNED:

SCALE(A3): Plan 1:5,000  
Profile 1:5,000(X) and 1:1,000(Y)

TEAM LEADER/URBAN RAILWAY PLANNING

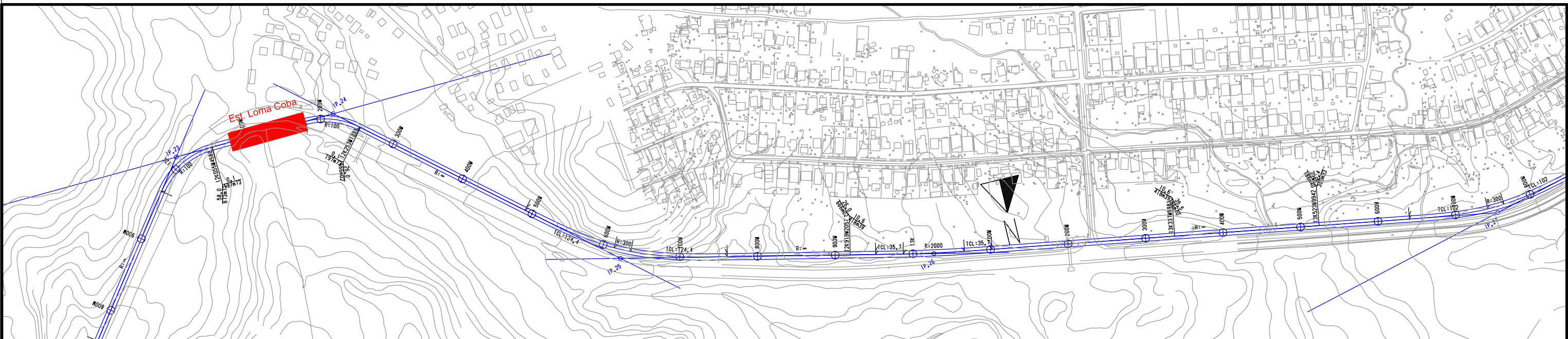
CIVIL AND FACILITY PLANNING

APPROVED BY:

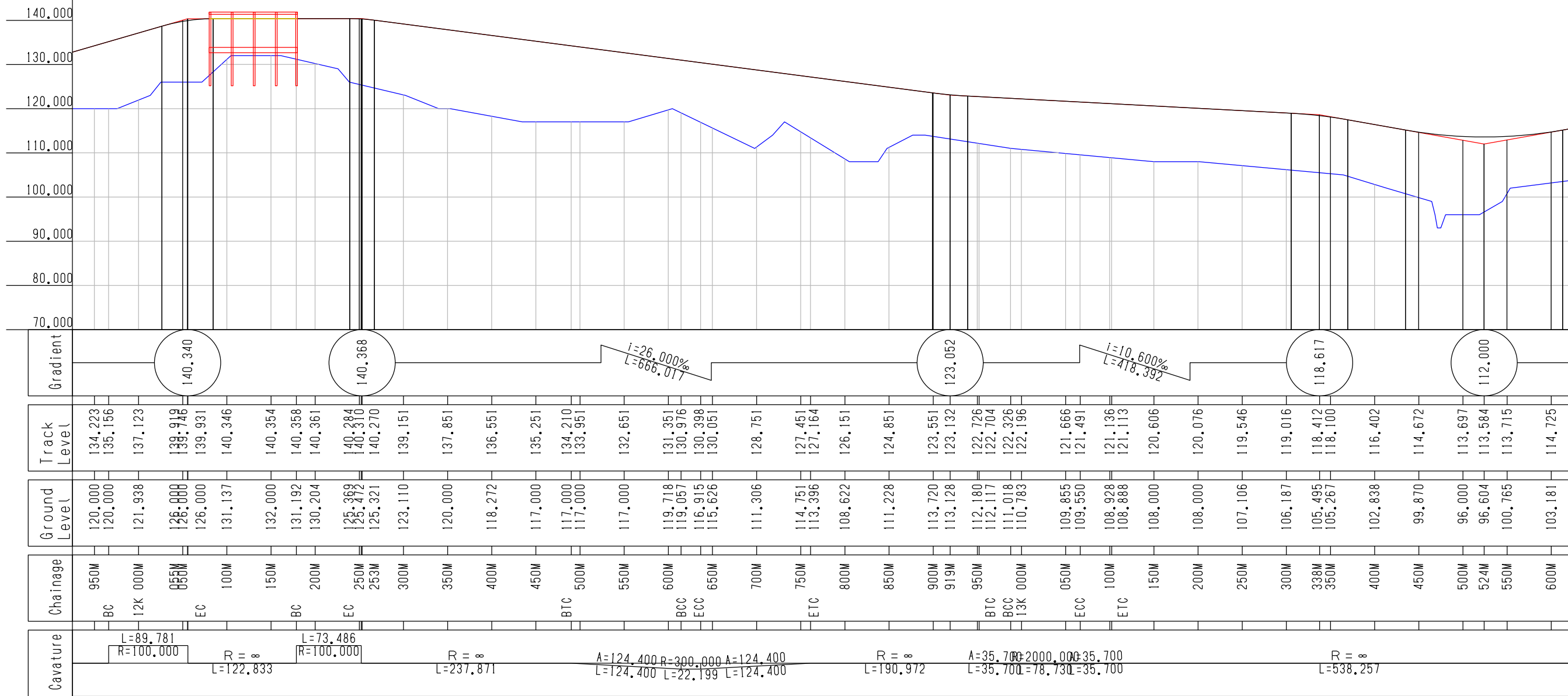
8

REMARKS:

Alignment Plan(FR)  
(10K500M000 ~ 12K000M000)



Est. Loma Coba



SECRETARIA DEL METRO DE PANAMA



JAPAN INTERNATIONAL COOPERATION AGENCY

THE FEASIBILITY STUDY ON PANAMA CITY URBAN TRANSPORTATION LINE-3 PROJECT

DRAWN: \_\_\_\_\_ DATE: August 2014  
 DESIGNED: \_\_\_\_\_ SCALE(A3): Plan 1:5,000  
 Profile 1:5,000(X) and 1:1,000(Y)

RECEIVED BY: \_\_\_\_\_ SUBMITTED BY: \_\_\_\_\_  
 TEAM LEADER/URBAN RAILWAY PLANNING CIVIL AND FACILITY PLANNING

CHECKED BY: \_\_\_\_\_ APPROVED BY: \_\_\_\_\_  
 PAGE: 9

REMARKS:  
 Alignment Plan(FR)  
 (12K000M000 ~ 13K500M000)  
 18

