

付属資料 6: 既存設備位置図・移設計画図
(第4 パナマ運河橋)

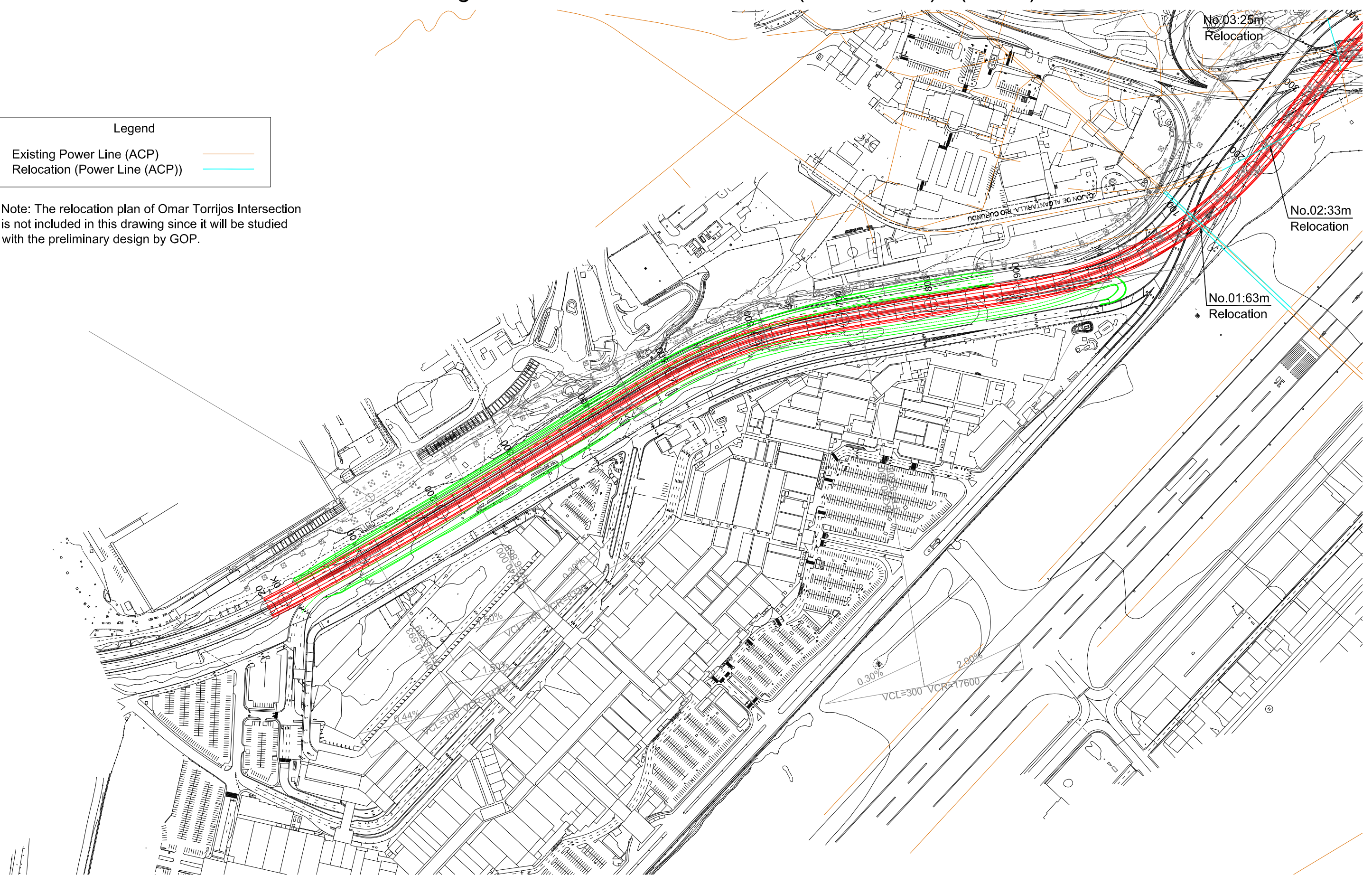
Location of Existing Utilities and Relocation Plan (Power Line) (1 of 5)

Legend

Existing Power Line (ACP) ————

Relocation (Power Line (ACP)) ————

Note: The relocation plan of Omar Torrijos Intersection is not included in this drawing since it will be studied with the preliminary design by GOP.



SECRETARIA DEL METRO DE PANAMA



JAPAN INTERNATIONAL COOPERATION AGENCY

THE FEASIBILITY STUDY ON PANAMA CITY URBAN TRANSPORTATION LINE-3 PROJECT

DRAWN:

DATE:

May 2014

RECEIVED BY:

SUBMITTED BY:

CHECKED BY:

PAGE:

DESIGNED:

SCALE:

S=1:4,000

TEAM LEADER/URBAN RAILWAY PLANNING

CIVIL AND FACILITY PLANNING

APPROVED BY:

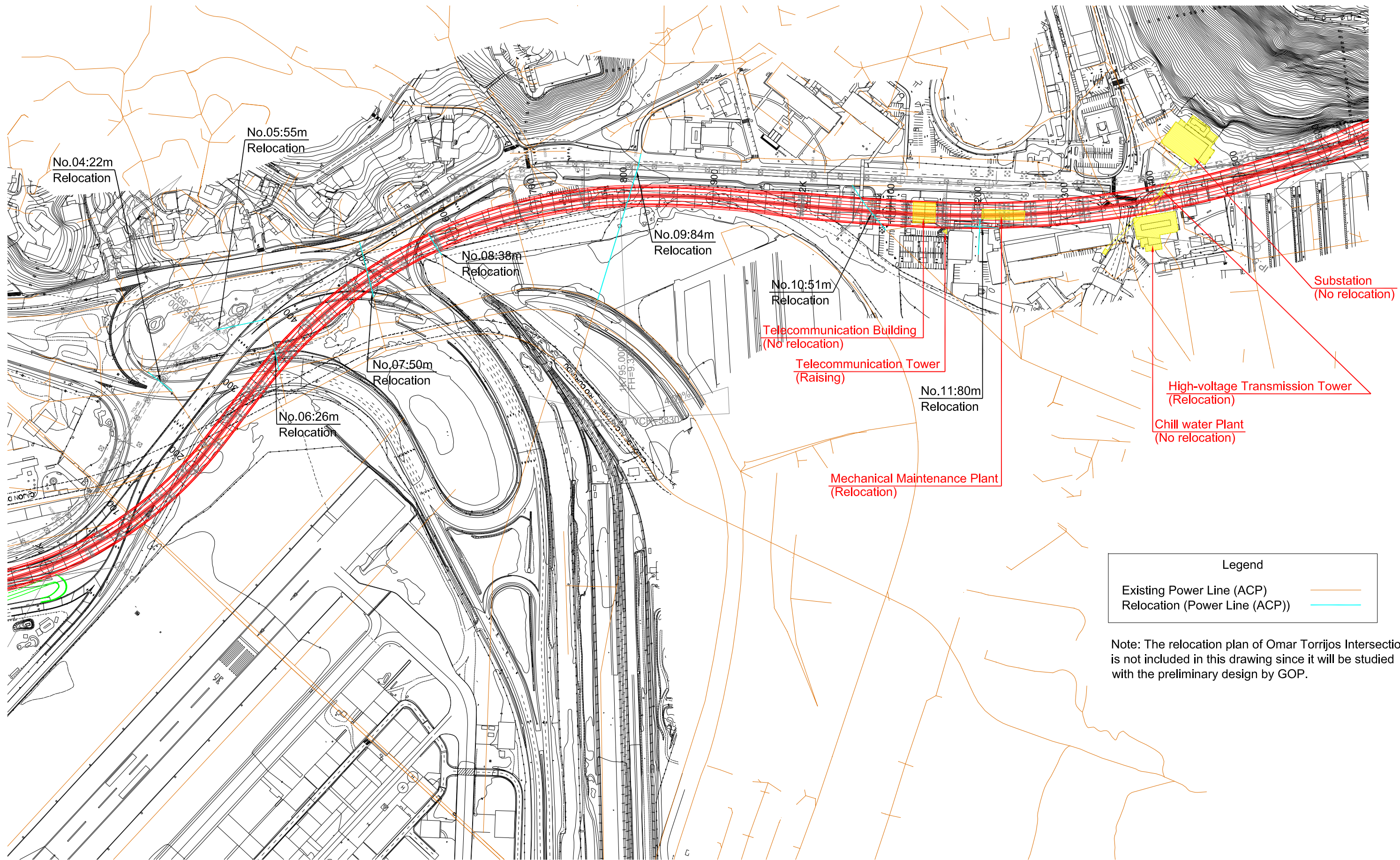
1

5

REMARKS:

Location of Existing Utilities and Relocation Plan (Power Line) (1 of 5)

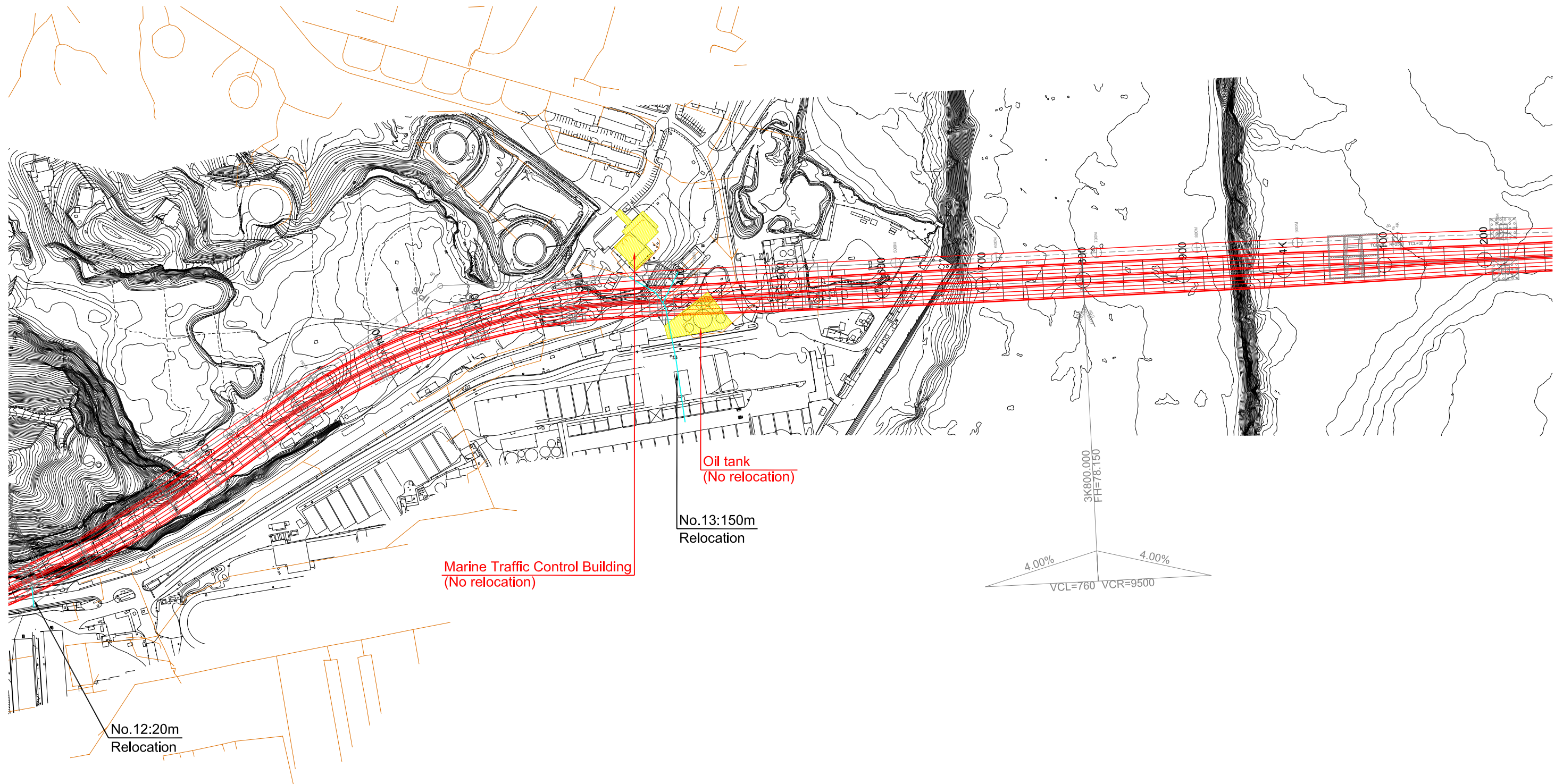
Location of Existing Utilities and Relocation Plan (Power Line) (2 of 5)



Legend	
Existing Power Line (ACP)	
Relocation (Power Line (ACP))	

Note: The relocation plan of Omar Torrijos Intersection is not included in this drawing since it will be studied with the preliminary design by GOP.

Location of Existing Utilities and Relocation Plan (Power Line) (3 of 5)



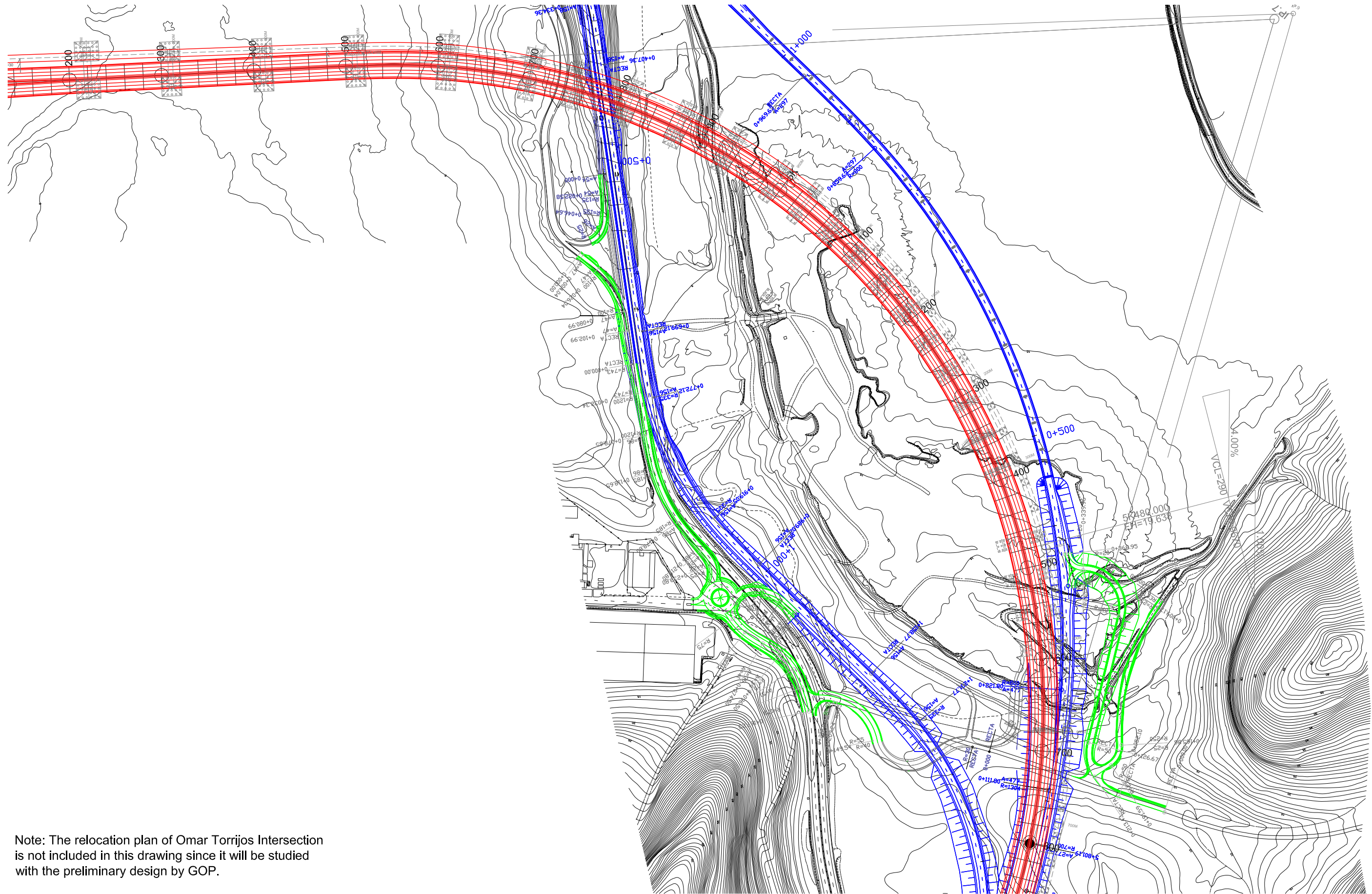
Legend

Existing Power Line (ACP) —



Relocation (Power Line (ACP)) —

Note: The relocation plan of Omar Torrijos Intersection is not included in this drawing since it will be studied with the preliminary design by GOP.

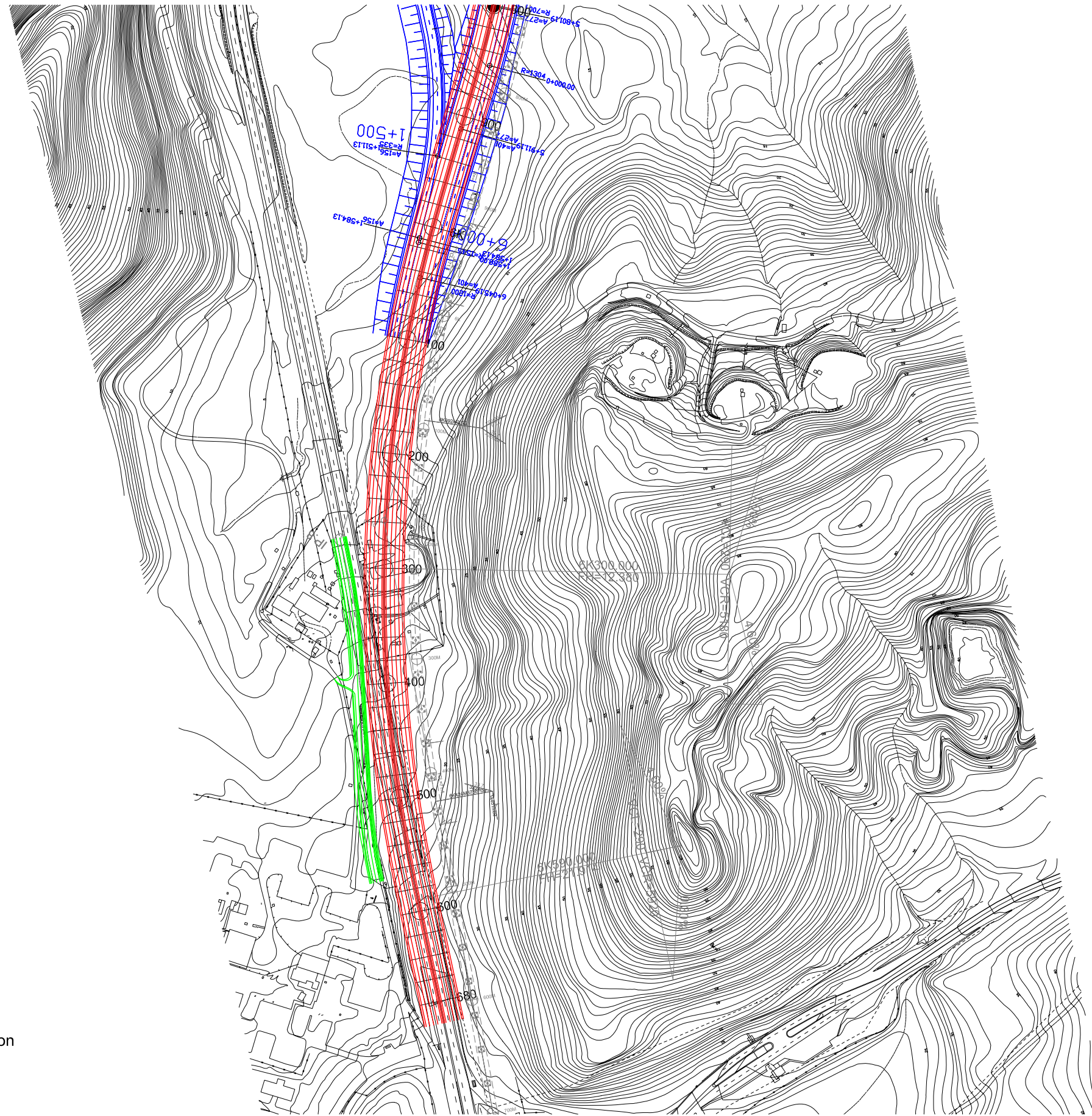
Location of Existing Utilities and Relocation Plan (Power Line) (4 of 5)





Note: The relocation plan of Omar Torrijos Intersection is not included in this drawing since it will be studied with the preliminary design by GOP.

	SECRETARIA DEL METRO DE PANAMA	 JAPAN INTERNATIONAL COOPERATION AGENCY	THE FEASIBILITY STUDY ON PANAMA CITY URBAN TRANSPORTATION LINE-3 PROJECT				REMARKS:	
			DRAWN:	DATE: May 2014	RECEIVED BY:	SUBMITTED BY:	CHECKED BY:	PAGE: 4
DESIGNED:	SCALE: S=1:4,000	TEAM LEADER/URBAN RAILWAY PLANNING	CIVIL AND FACILITY PLANNING	APPROVED BY:	5			

Location of Existing Utilities and Relocation Plan (Power Line) (5 of 5)




Note: The relocation plan of Omar Torrijos Intersection is not included in this drawing since it will be studied with the preliminary design by GOP.

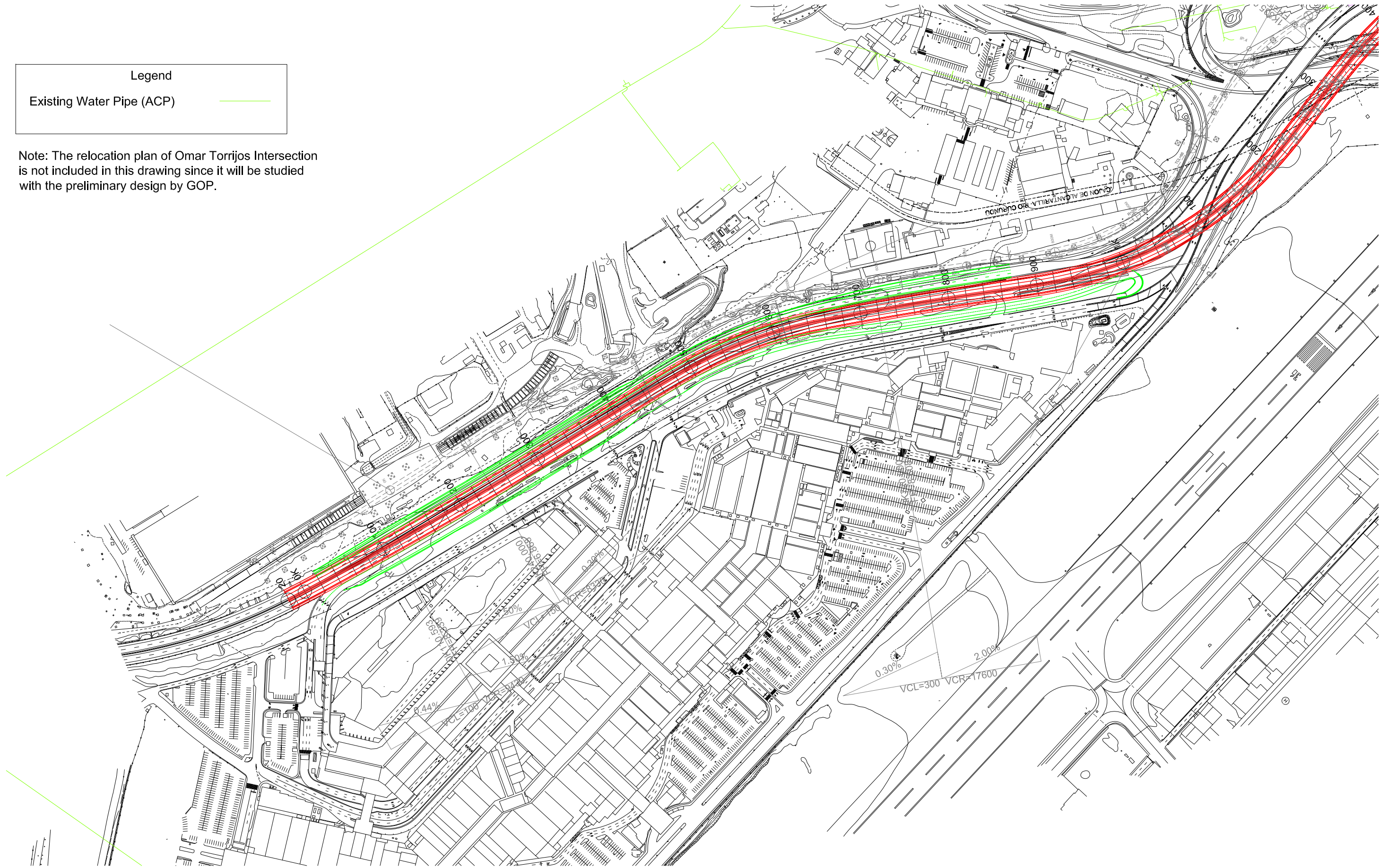
	SECRETARIA DEL METRO DE PANAMA	 JAPAN INTERNATIONAL COOPERATION AGENCY	THE FEASIBILITY STUDY ON PANAMA CITY URBAN TRANSPORTATION LINE-3 PROJECT					REMARKS: Location of Existing Utilities and Relocation Plan (Power Line) (5 of 5)
			DRAWN:	DATE: May 2014	RECEIVED BY:	SUBMITTED BY:	CHECKED BY:	
			DESIGNED:	SCALE: S=1:4,000	TEAM LEADER/URBAN RAILWAY PLANNING	CIVIL AND FACILITY PLANNING	APPROVED BY:	5

Location of Existing Utilities and Relocation Plan (Water Pipe) (1 of 5)

Legend

Existing Water Pipe (ACP) 

Note: The relocation plan of Omar Torrijos Intersection is not included in this drawing since it will be studied with the preliminary design by GOP.



SECRETARIA DEL METRO DE PANAMA



JAPAN INTERNATIONAL COOPERATION AGENCY

THE FEASIBILITY STUDY ON PANAMA CITY URBAN TRANSPORTATION LINE-3 PROJECT

DRAWN:

DATE:

May 2014

RECEIVED BY:

SUBMITTED BY:

CHECKED BY:

PAGE:

DESIGNED:

SCALE:

S=1:4,000

TEAM LEADER/URBAN RAILWAY PLANNING

CIVIL AND FACILITY PLANNING

APPROVED BY:

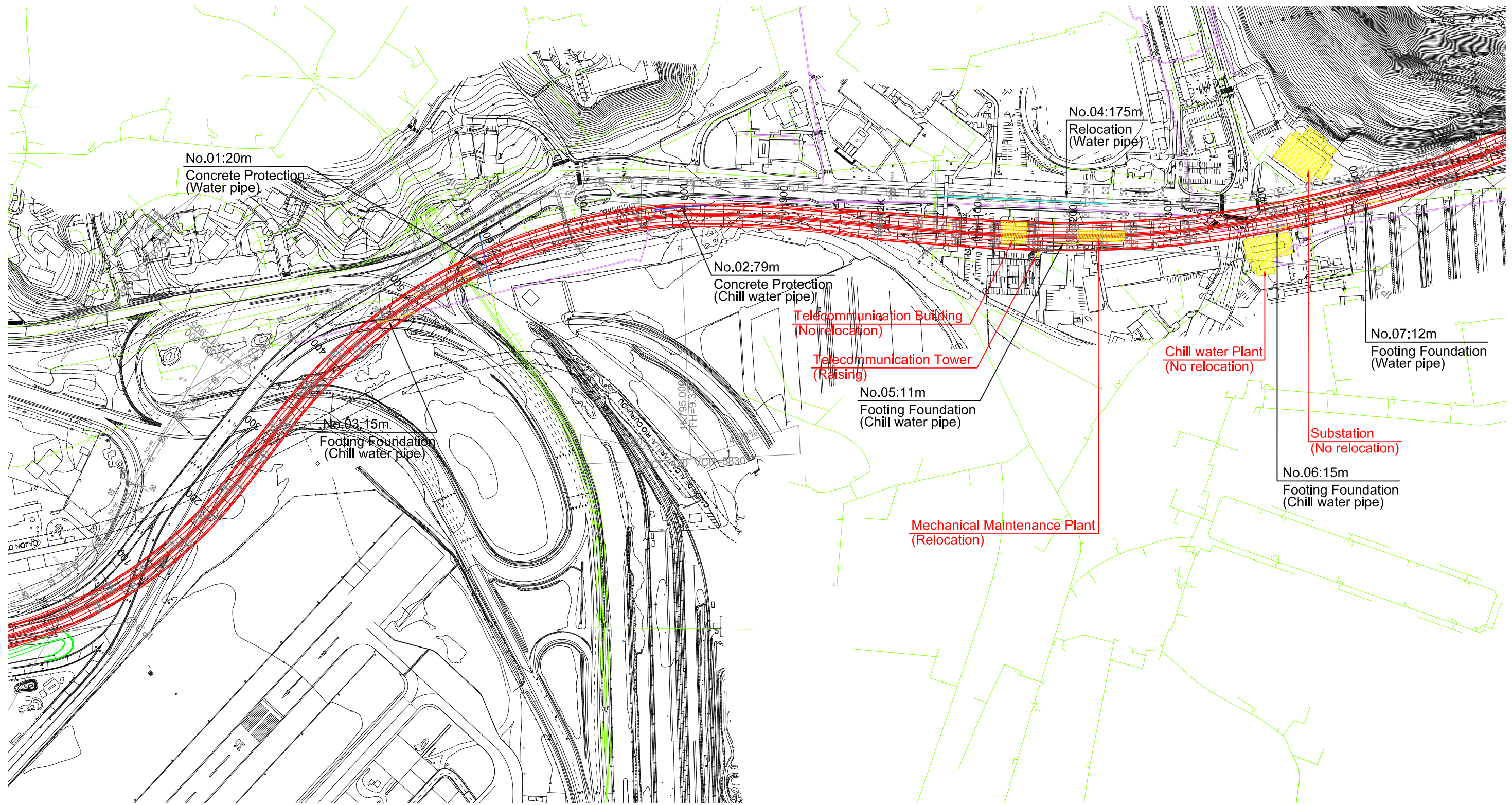
1

5

REMARKS:

Location of Existing Utilities and Relocation Plan (Water Pipe) (1 of 5)

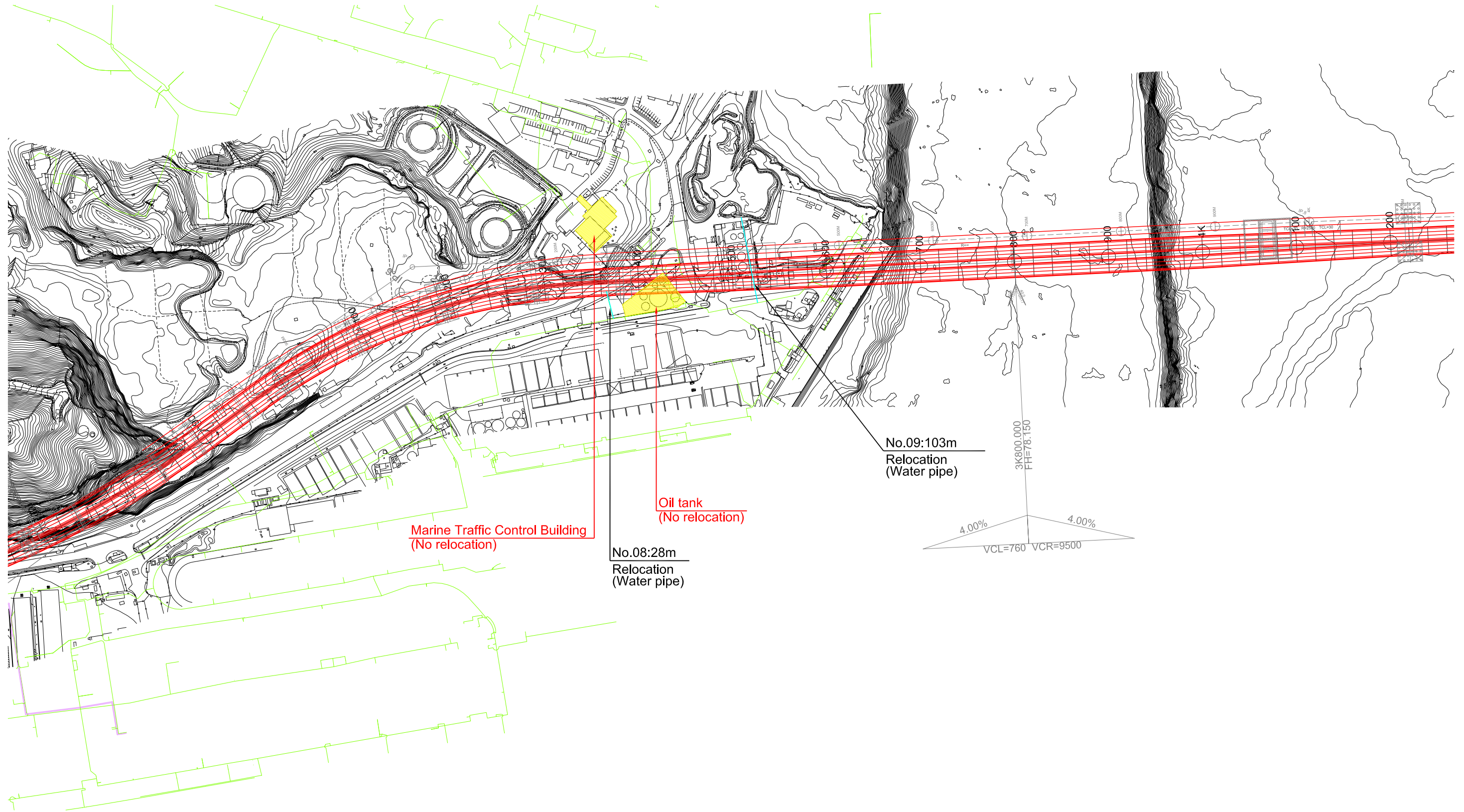
Location of Existing Utilities and Relocation Plan (Water Pipe) (2 of 5)



Note: The relocation plan of Omar Torrijos Intersection is not included in this drawing since it will be studied with the preliminary design by GOP.

Legend	
Existing Water Pipe (ACP)	
Existing Chill Water Pipe (ACP)	
Relocation (Water Pipe (ACP))	
On Footing Foundation (Water Pipe/ Chill Water Pipe (ACP))	
Concrete Protection (Water Pipe/ Chill Water Pipe (ACP))	

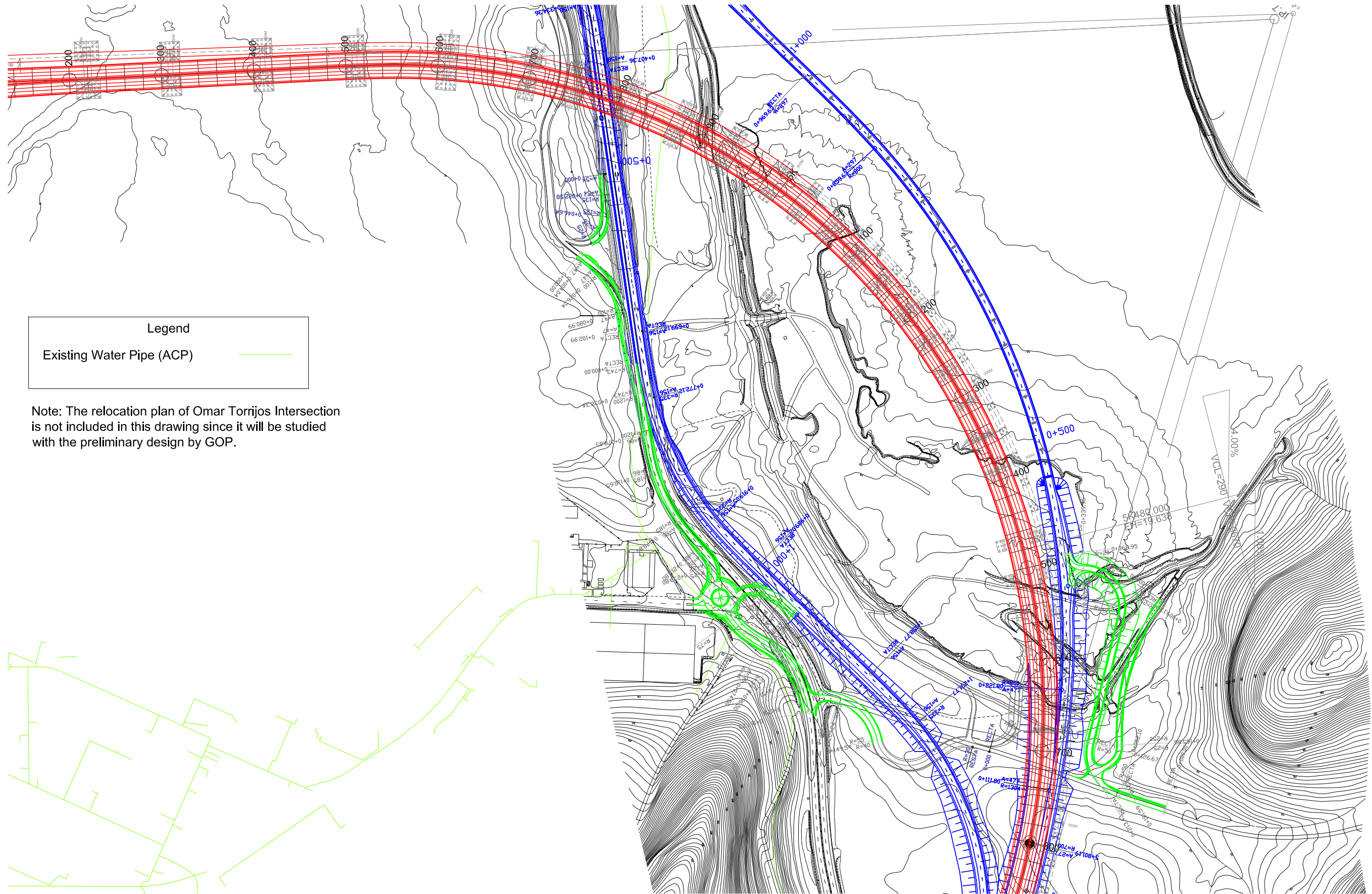
Location of Existing Utilities and Relocation Plan (Water Pipe) (3 of 5)



Note: The relocation plan of Omar Torrijos Intersection is not included in this drawing since it will be studied with the preliminary design by GOP.

Legend	
Existing Utilities (Water pipe)	
Existing Utilities (Chill water pipe)	
Relocation Utilities	

Location of Existing Utilities and Relocation Plan (Water Pipe) (4 of 5)



Legend
Existing Water Pipe (ACP)

Note: The relocation plan of Omar Torrijos Intersection is not included in this drawing since it will be studied with the preliminary design by GOP.



SECRETARIA DEL METRO DE PANAMA



JAPAN INTERNATIONAL COOPERATION AGENCY

THE FEASIBILITY STUDY ON PANAMA CITY URBAN TRANSPORTATION LINE-3 PROJECT

DRAWN:

DATE:

May 2014

RECEIVED BY:

SUBMITTED BY:

CHECKED BY:

PAGE:

DESIGNED:

SCALE:

S=1:4,000

TEAM LEADER/URBAN RAILWAY PLANNING

CIVIL AND FACILITY PLANNING

APPROVED BY:

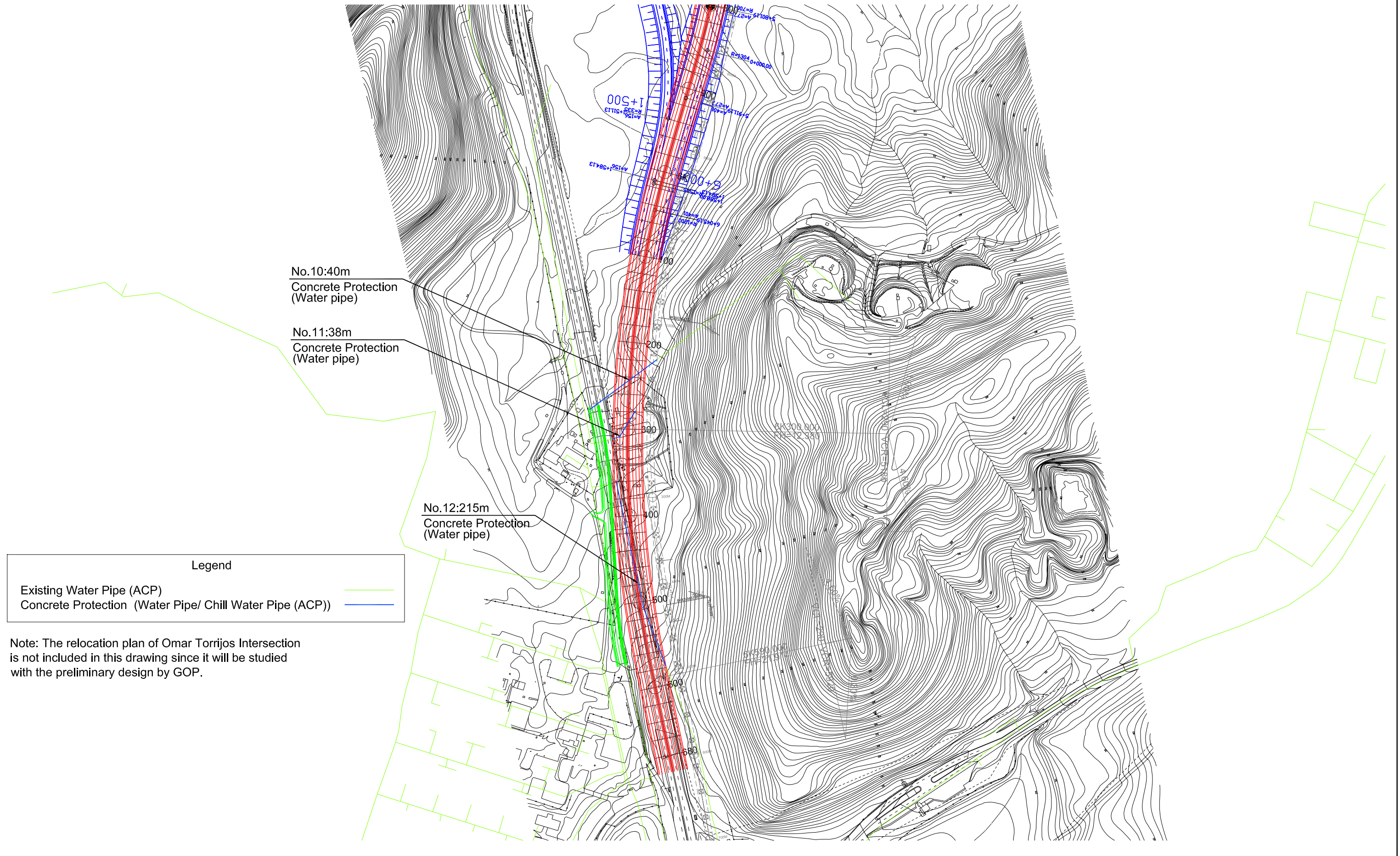
4

5

REMARKS:

Location of Existing Utilities and Relocation Plan (Water Pipe) (4 of 5)

Location of Existing Utilities and Relocation Plan (Water Pipe) (5 of 5)



No.10:40m
Concrete Protection
(Water pipe)

No.11:38m
Concrete Protection
(Water pipe)

No.12:215m
Concrete Protection
(Water pipe)


Legend

- Existing Water Pipe (ACP) —
- Concrete Protection (Water Pipe/ Chill Water Pipe (ACP)) —

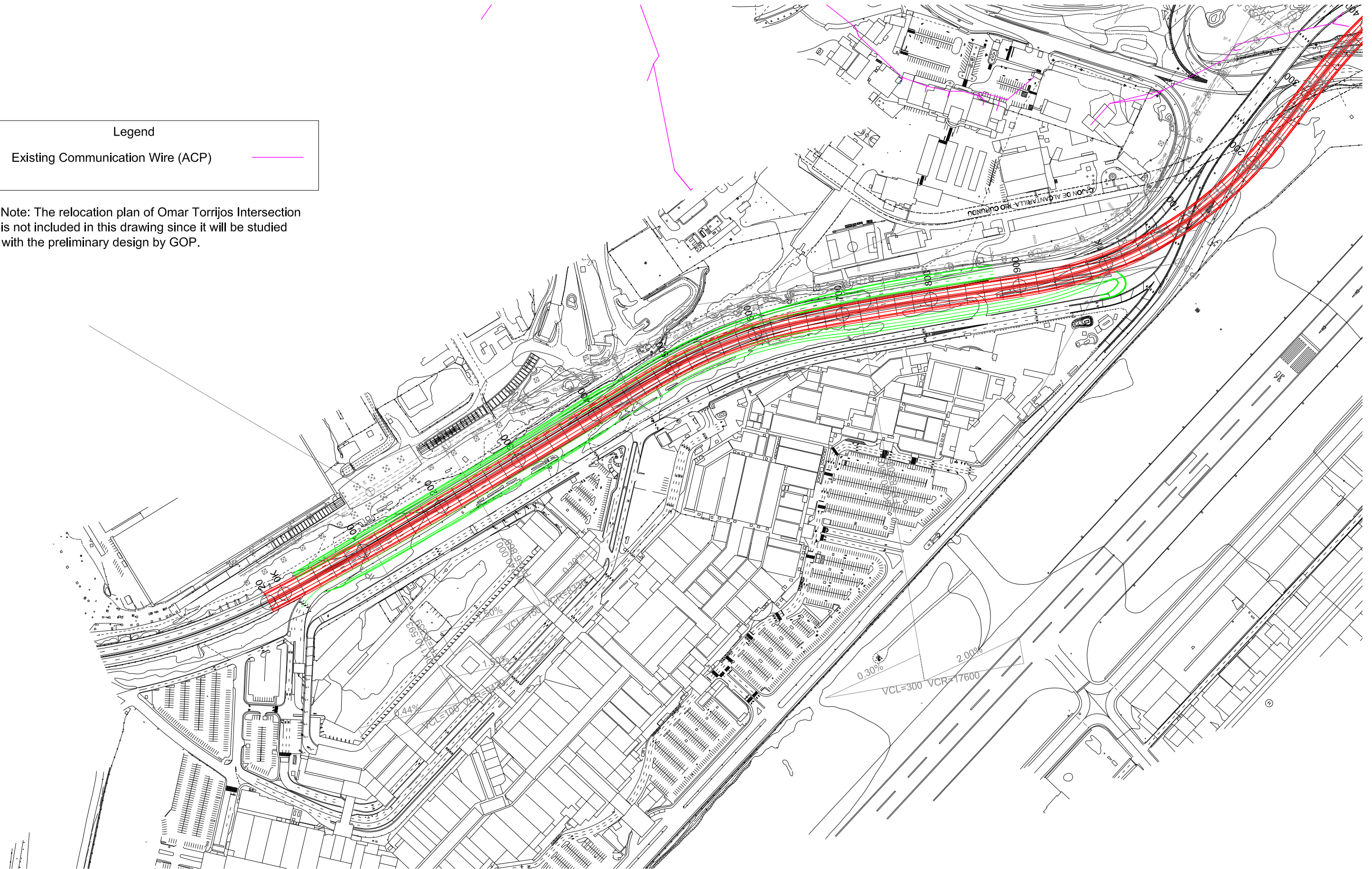
Note: The relocation plan of Omar Torrijos Intersection is not included in this drawing since it will be studied with the preliminary design by GOP.

Location of Existing Utilities and Relocation Plan (Communication wire) (1 of 5)

Legend

Existing Communication Wire (ACP) 

Note: The relocation plan of Omar Torrijos Intersection is not included in this drawing since it will be studied with the preliminary design by GOP.



SECRETARIA DEL METRO DE PANAMA



JAPAN INTERNATIONAL COOPERATION AGENCY

THE FEASIBILITY STUDY ON PANAMA CITY URBAN TRANSPORTATION LINE-3 PROJECT

DRAWN:

DATE:

May 2014

RECEIVED BY:

SUBMITTED BY:

CHECKED BY:

PAGE:

DESIGNED:

SCALE:

S=1:4,000

TEAM LEADER/URBAN RAILWAY PLANNING

CIVIL AND FACILITY PLANNING

APPROVED BY:

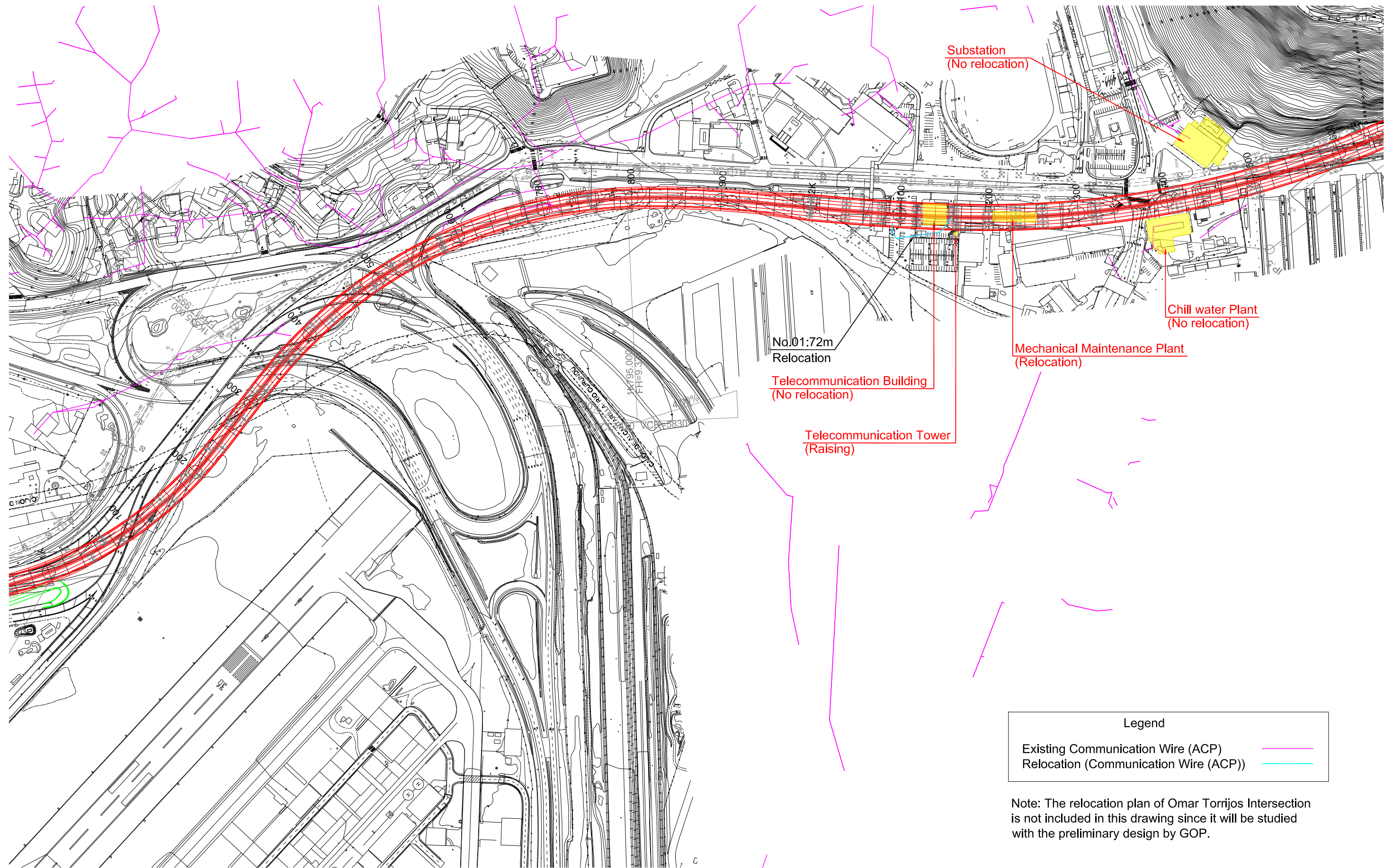
1

5

REMARKS:

Location of Existing Utilities and Relocation Plan (Communication wire) (1 of 5)

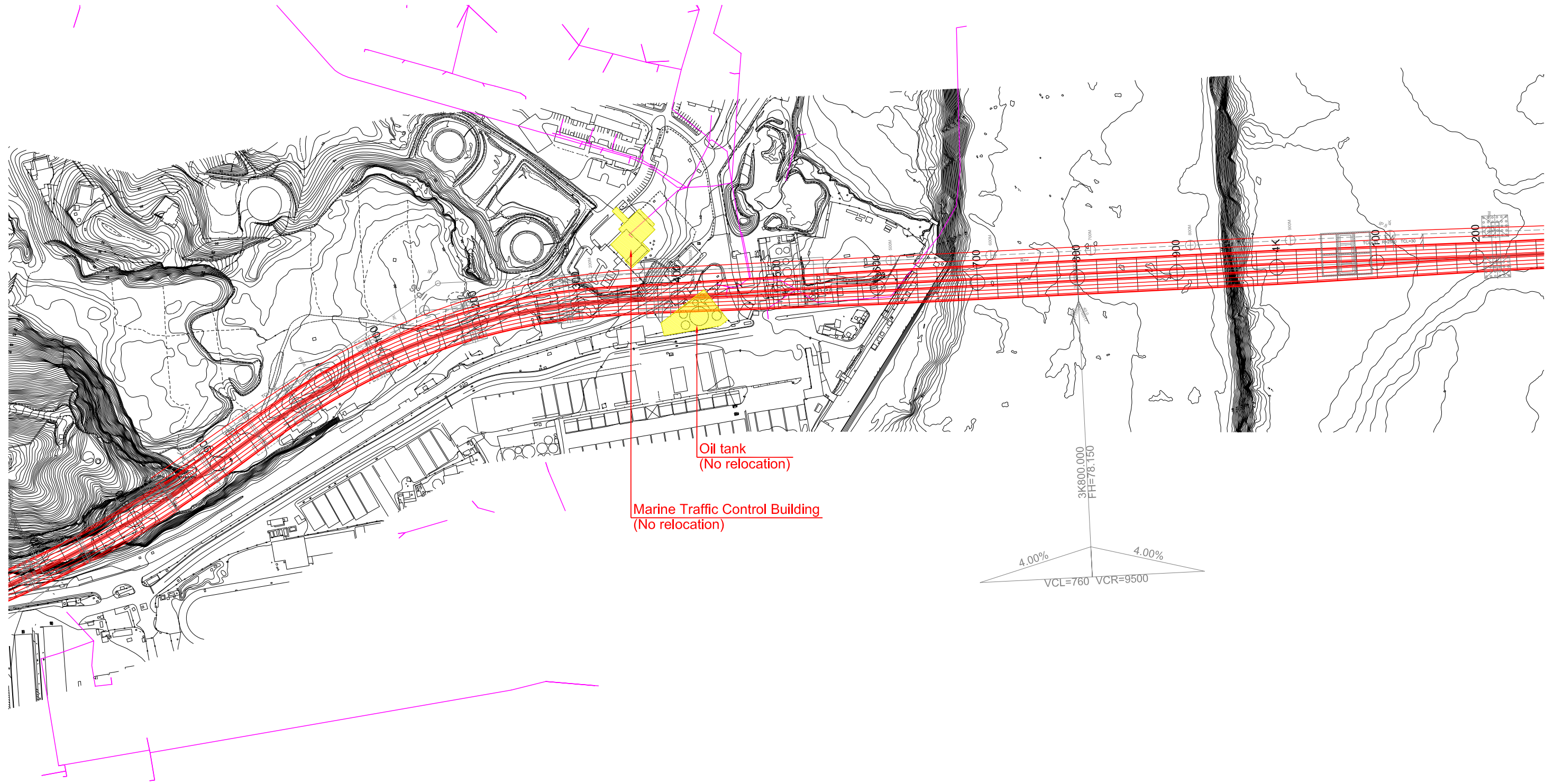
Location of Existing Utilities and Relocation Plan (Communication wire) (2 of 5)



Legend	
Existing Communication Wire (ACP)	
Relocation (Communication Wire (ACP))	

Note: The relocation plan of Omar Torrijos Intersection is not included in this drawing since it will be studied with the preliminary design by GOP.

Location of Existing Utilities and Relocation Plan (Communication wire) (3 of 5)

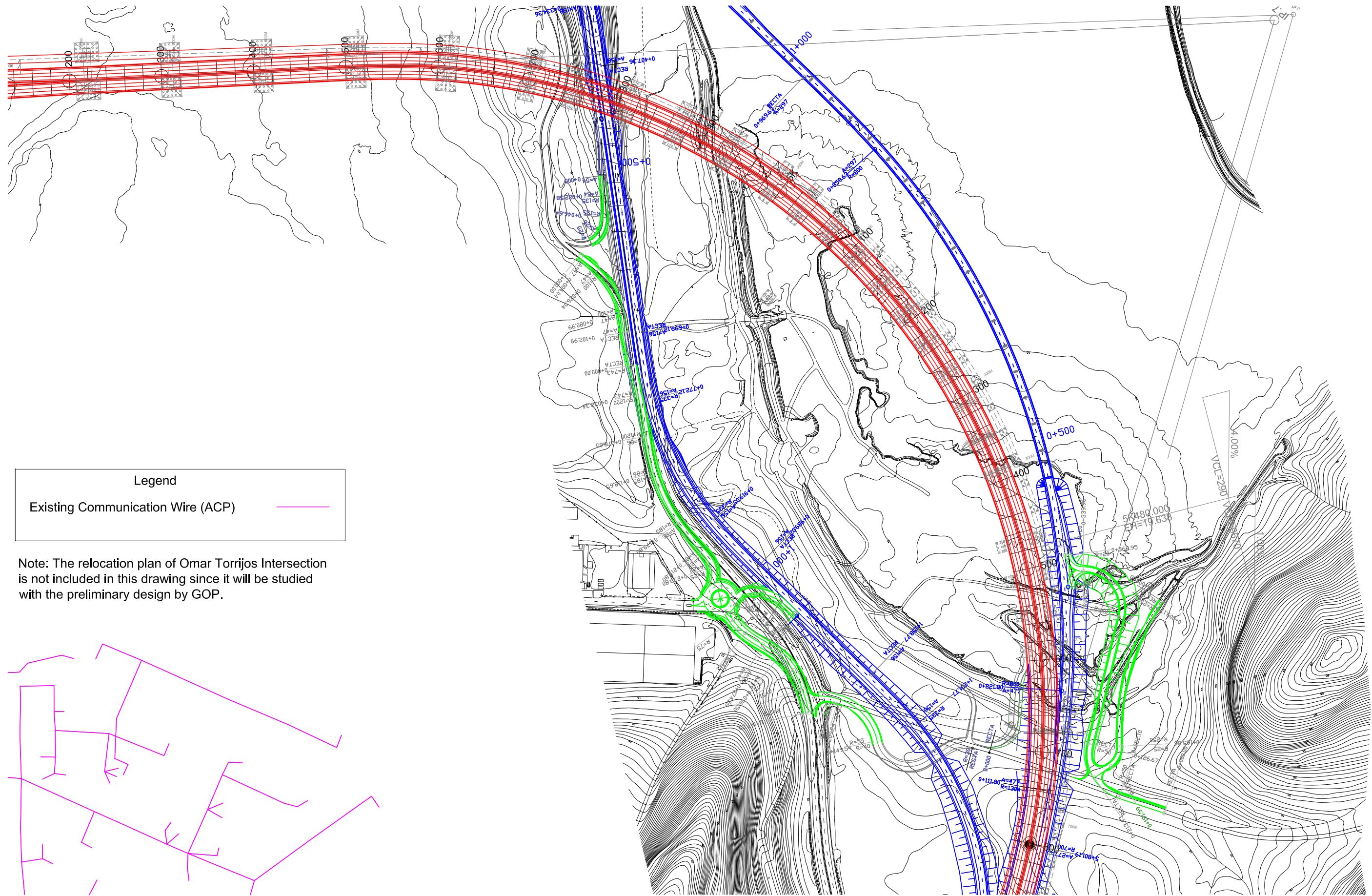


Legend

Existing Communication Wire (ACP) —

Note: The relocation plan of Omar Torrijos Intersection is not included in this drawing since it will be studied with the preliminary design by GOP.

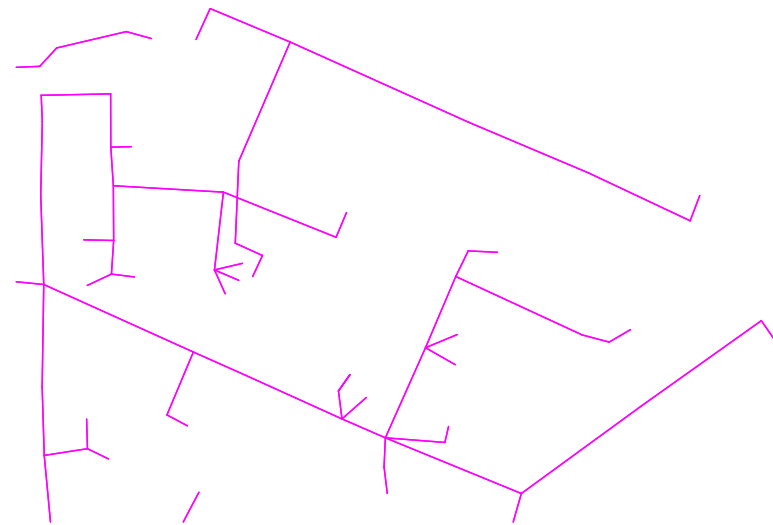
Location of Existing Utilities and Relocation Plan (Communication wire) (4 of 5)



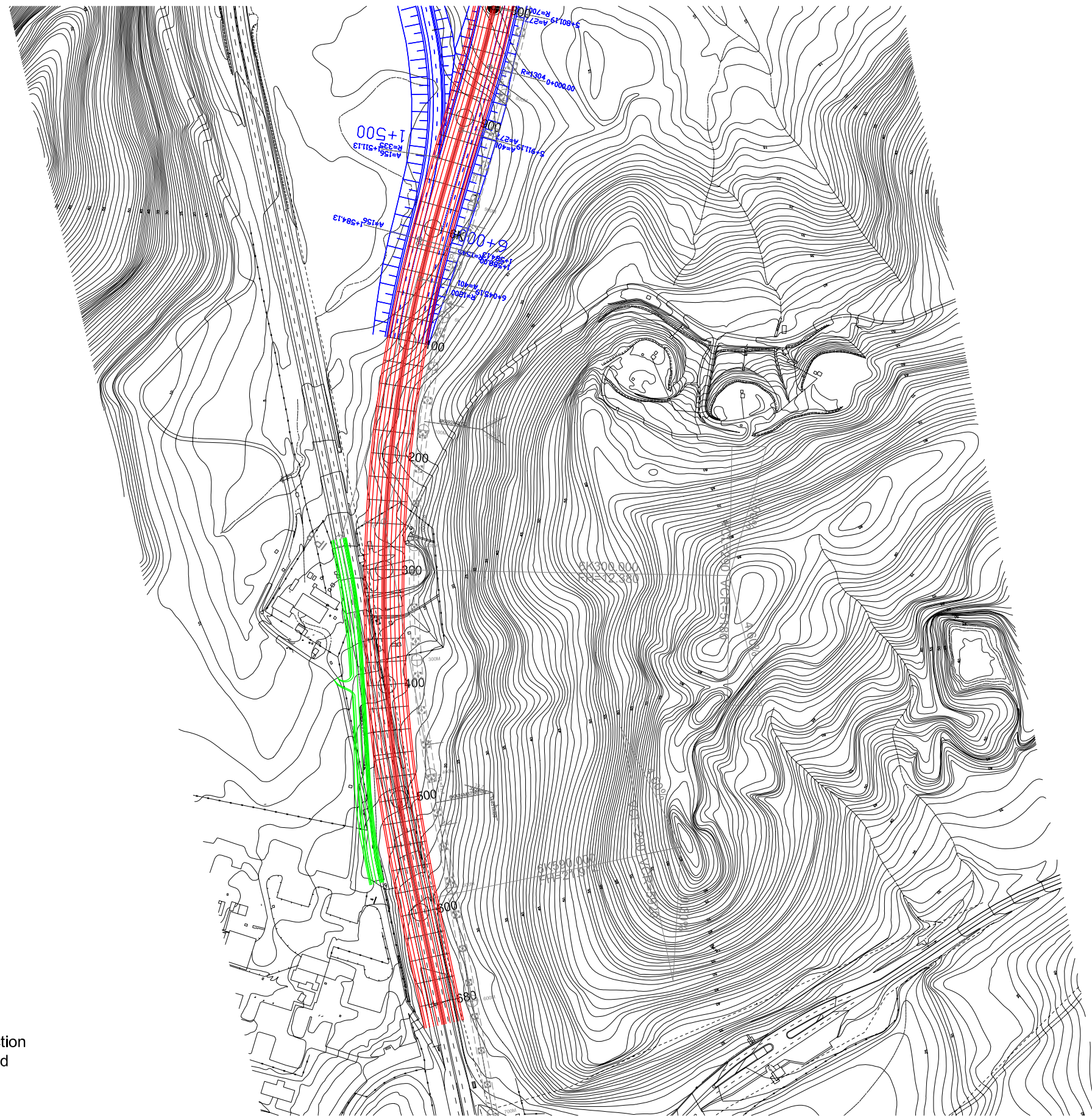
Legend

Existing Communication Wire (ACP) —

Note: The relocation plan of Omar Torrijos Intersection is not included in this drawing since it will be studied with the preliminary design by GOP.



Location of Existing Utilities and Relocation Plan (Communication wire) (5 of 5)



Note: The relocation plan of Omar Torrijos Intersection is not included in this drawing since it will be studied with the preliminary design by GOP.



SECRETARIA DEL METRO DE PANAMA



JAPAN INTERNATIONAL COOPERATION AGENCY

THE FEASIBILITY STUDY ON PANAMA CITY URBAN TRANSPORTATION LINE-3 PROJECT

DRAWN:
DESIGNED:

DATE: May 2014
SCALE: S=1:4,000

RECEIVED BY:
TEAM LEADER/URBAN RAILWAY PLANNING

SUBMITTED BY:
CIVIL AND FACILITY PLANNING

CHECKED BY:
APPROVED BY:

PAGE: 5/5

REMARKS:

Location of Existing Utilities and Relocation Plan (Communication wire) (5 of 5)