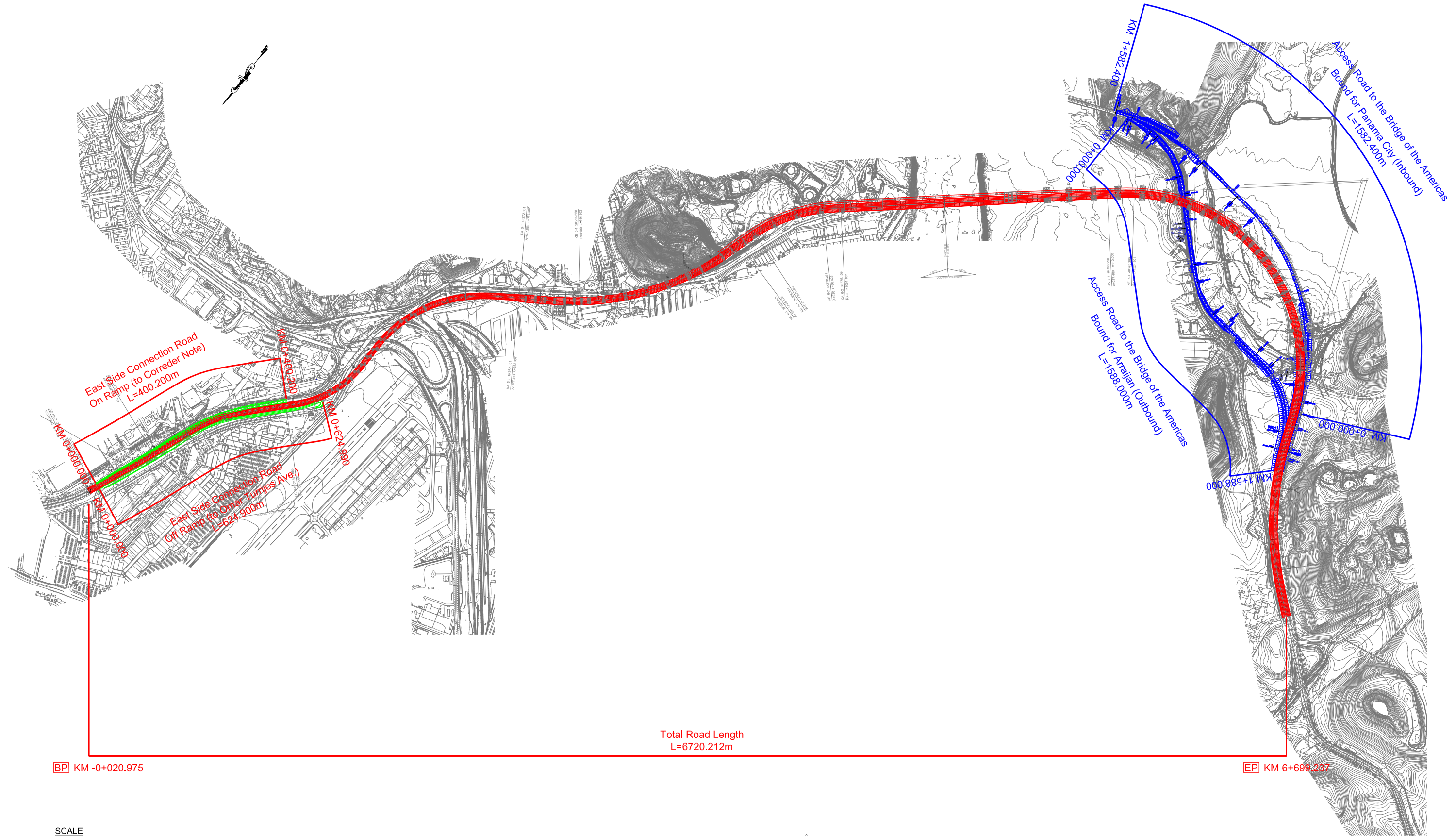


付属資料 5-1-2: 道路図面

Plan S=1:100,000





Total Road Length
L=6720.212m

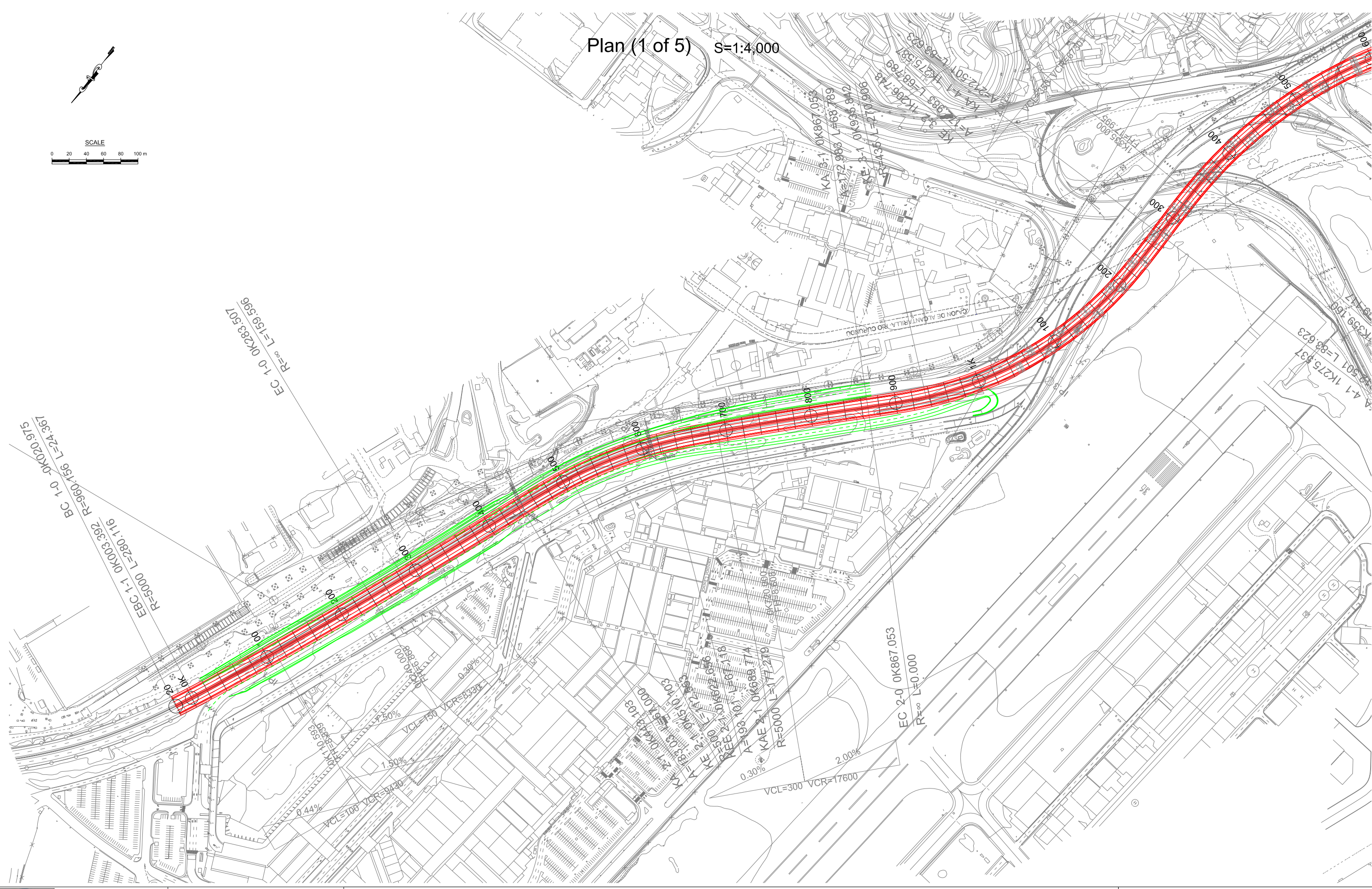
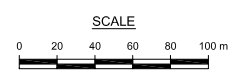
BP KM -0+020.975



EP KM 6+699.237

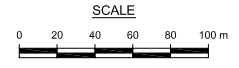




	SECRETARIA DEL METRO DE PANAMA	 JAPAN INTERNATIONAL COOPERATION AGENCY	THE FEASIBILITY STUDY ON PANAMA CITY URBAN TRANSPORTATION LINE-3 PROJECT					REMARKS:	
			DRAWN:	DATE: May 2014	RECEIVED BY:	SUBMITTED BY:	CHECKED BY:	PAGE:	Plan
DESIGNED:	SCALE: S=1:100,000	TEAM LEADER/URBAN RAILWAY PLANNING	CIVIL AND FACILITY PLANNING	APPROVED BY:	1	15			

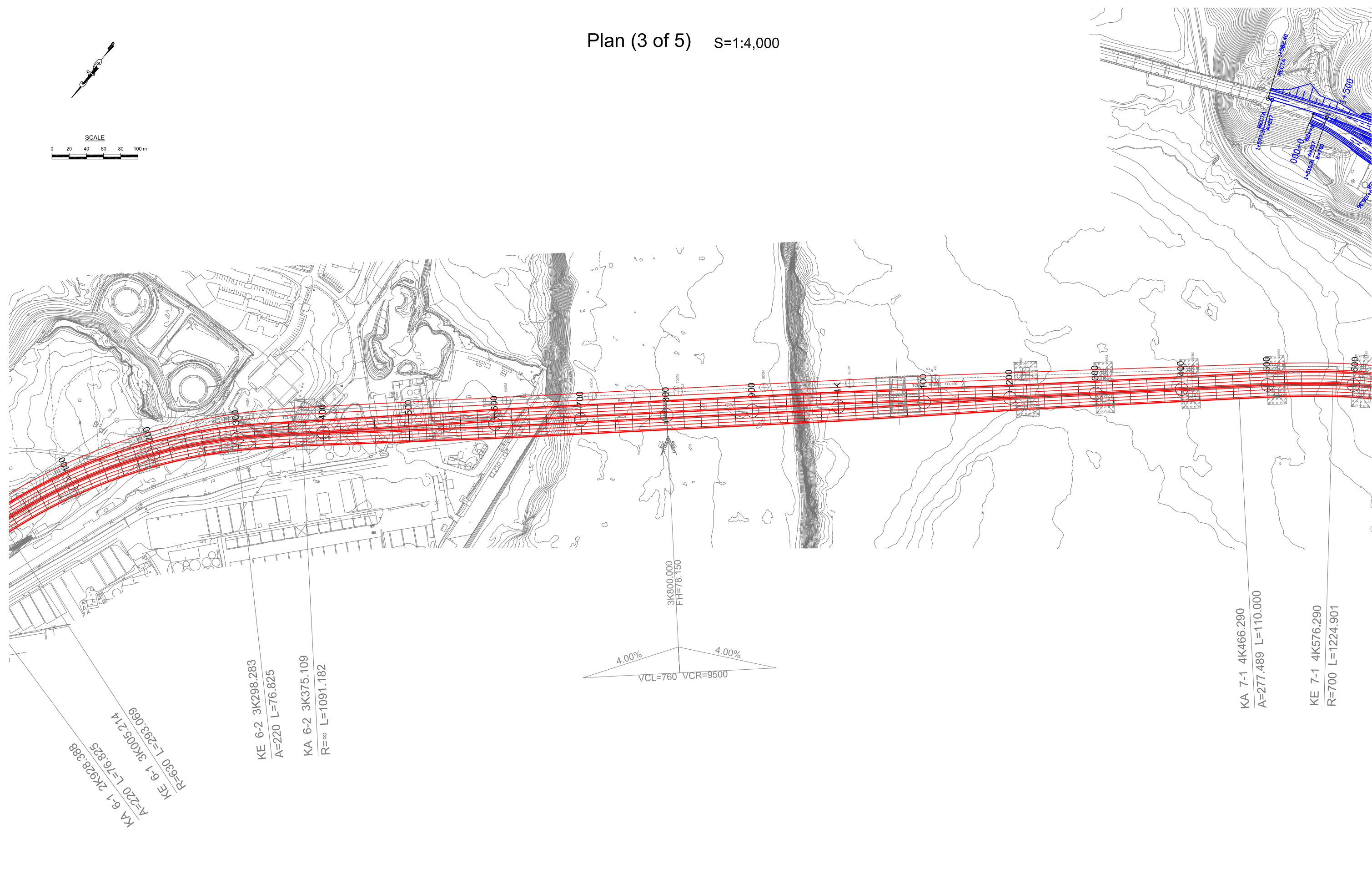
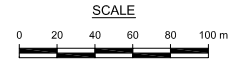
Plan (1 of 5) S=1:4,000



	SECRETARIA DEL METRO DE PANAMA	 JAPAN INTERNATIONAL COOPERATION AGENCY	THE FEASIBILITY STUDY ON PANAMA CITY URBAN TRANSPORTATION LINE-3 PROJECT					REMARKS:	
			DRAWN:	DATE: May 2014	RECEIVED BY:	SUBMITTED BY:	CHECKED BY:	PAGE: 2	Plan (1 of 5)
DESIGNED:	SCALE: S=1:4,000	TEAM LEADER/URBAN RAILWAY PLANNING	CIVIL AND FACILITY PLANNING	APPROVED BY:	15				



	SECRETARIA DEL METRO DE PANAMA	 JAPAN INTERNATIONAL COOPERATION AGENCY	THE FEASIBILITY STUDY ON PANAMA CITY URBAN TRANSPORTATION LINE-3 PROJECT					REMARKS: Plan (2 of 5)
			DRAWN:	DATE: May 2014	RECEIVED BY:	SUBMITTED BY:	CHECKED BY:	
			DESIGNED:	SCALE: S=1:4,000	TEAM LEADER/URBAN RAILWAY PLANNING	CIVIL AND FACILITY PLANNING	APPROVED BY:	





KA 6-1 2K928.388
A=220 L=76.825
R=630 L=293.069
KE 6-1 3K005.214

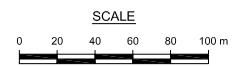
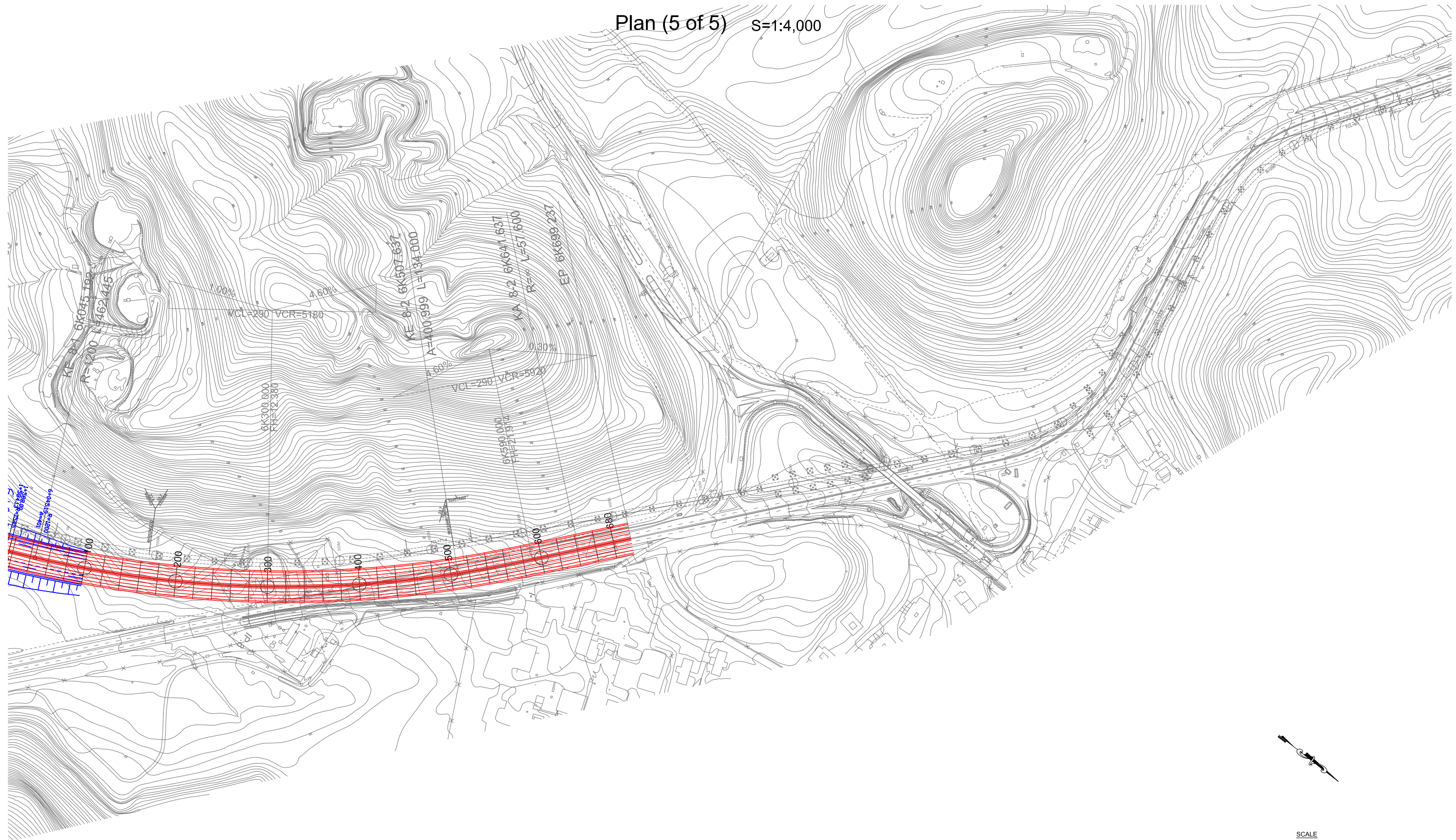
KE 6-2 3K298.283
A=220 L=76.825
KA 6-2 3K375.109
R=∞ L=1091.182

3K800.000
FH=78.150
4.00%
VCL=760 VCR=9500
4.00%

KA 7-1 4K466.290
A=277.489 L=110.000

KE 7-1 4K576.290
R=700 L=1224.901

	SECRETARIA DEL METRO DE PANAMA	 JAPAN INTERNATIONAL COOPERATION AGENCY	THE FEASIBILITY STUDY ON PANAMA CITY URBAN TRANSPORTATION LINE-3 PROJECT					REMARKS: Plan (3 of 5)
			DRAWN:	DATE: May 2014	RECEIVED BY:	SUBMITTED BY:	CHECKED BY:	
			DESIGNED:	SCALE: S=1:4,000	TEAM LEADER/URBAN RAILWAY PLANNING	APPROVED BY:		



SECRETARIA DEL METRO DE PANAMA



JAPAN INTERNATIONAL COOPERATION AGENCY

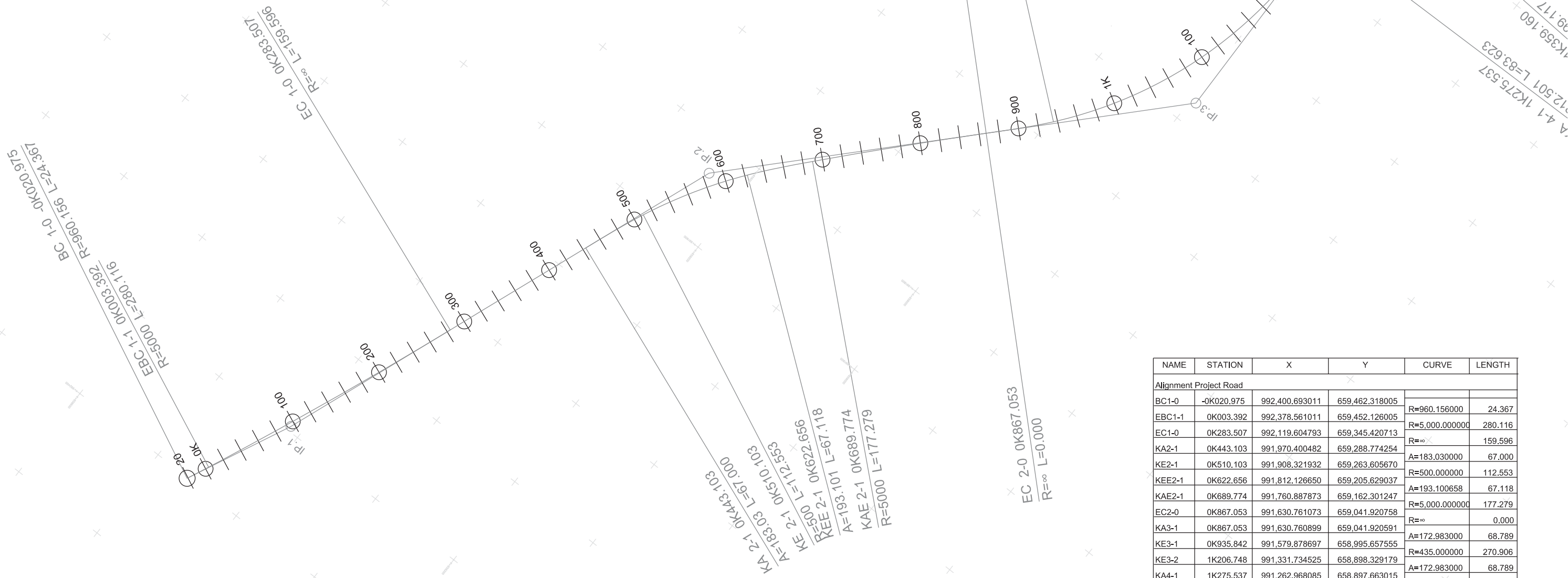
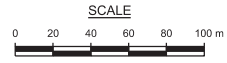
THE FEASIBILITY STUDY ON PANAMA CITY URBAN TRANSPORTATION LINE-3 PROJECT

DRAWN:	DATE: May 2014	RECEIVED BY:	SUBMITTED BY:	CHECKED BY:	PAGE: 6
DESIGNED:	SCALE: S=1:4,000	TEAM LEADER/URBAN RAILWAY PLANNING	CIVIL AND FACILITY PLANNING	APPROVED BY:	15

REMARKS:
Plan (5 of 5)

Alignment of 4th Panama Canal Bridge (1 of 5)

S=1:4,000



NAME	STATION	X	Y	CURVE	LENGTH
Alignment Project Road					
BC1-0	-0K020.975	992,400.693011	659,462.318005	R=960.156000	24.367
EBC1-1	0K003.392	992,378.561011	659,452.126005	R=5,000.000000	280.116
EC1-0	0K283.507	992,119.604793	659,345.420713	R=∞	159.596
KA2-1	0K443.103	991,970.400482	659,288.774254	A=183.030000	67.000
KE2-1	0K510.103	991,908.321932	659,263.605670	R=500.000000	112.553
KEE2-1	0K622.656	991,812.126650	659,205.629037	A=193.100658	67.118
KAE2-1	0K689.774	991,760.887873	659,162.301247	R=5,000.000000	177.279
EC2-0	0K867.053	991,630.761073	659,041.920758	R=∞	0.000
KA3-1	0K867.053	991,630.760899	659,041.920591	A=172.983000	68.789
KE3-1	0K935.842	991,579.878697	658,995.657555	R=435.000000	270.906
KE3-2	1K206.748	991,331.734525	658,898.329179	A=172.983000	68.789
KA4-1	1K275.537	991,262.968085	658,897.663015		

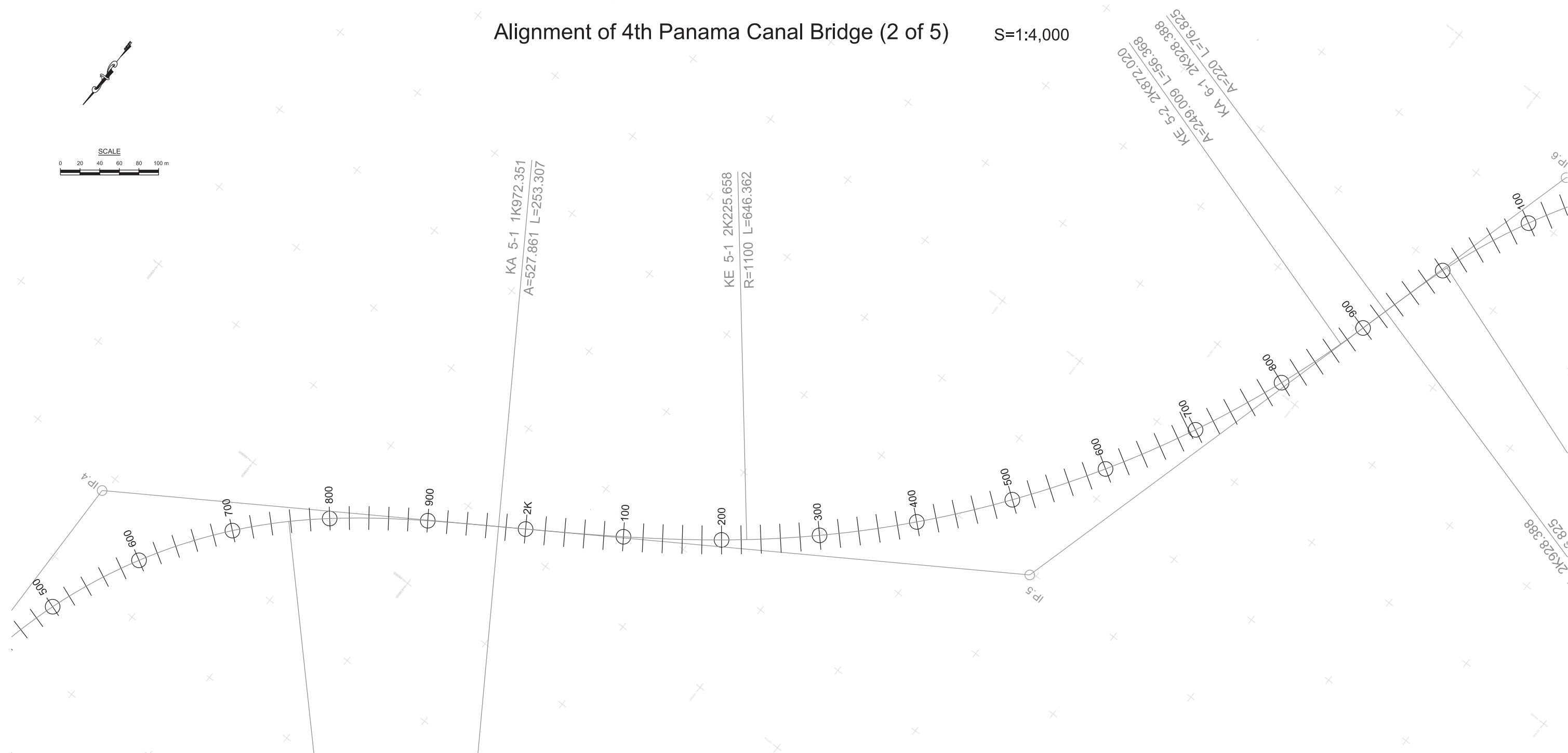
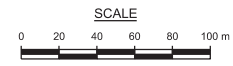


THE FEASIBILITY STUDY ON PANAMA CITY URBAN TRANSPORTATION LINE-3 PROJECT					
DRAWN:	DATE: May 2014	RECEIVED BY:	SUBMITTED BY:	CHECKED BY:	PAGE: 7/15
DESIGNED:	SCALE: S=1:4,000	TEAM LEADER/URBAN RAILWAY PLANNING	CIVIL AND FACILITY PLANNING	APPROVED BY:	

REMARKS:
Alignment of 4th Panama Canal Bridge (1 of 5)

Alignment of 4th Panama Canal Bridge (2 of 5)

S=1:4,000



NAME	STATION	X	Y	CURVE	LENGTH
KE4-1	1K359.160	991,179.370386	658,896.898827	A=212.501000	83.623
KE4-2	1K758.277	990,824.838986	658,734.168187	R=540.000000	399.117
KA5-1	1K972.351	990,697.430323	658,562.602074	A=340.000000	214.074
KE5-1	2K225.658	990,552.179014	658,355.259721	A=527.861300	253.307
KE5-2	2K872.020	990,022.481039	658,001.253609	R=1,100.000000	646.362
KA6-1	2K928.388	989,968.282476	657,985.770514	A=249.008500	56.368

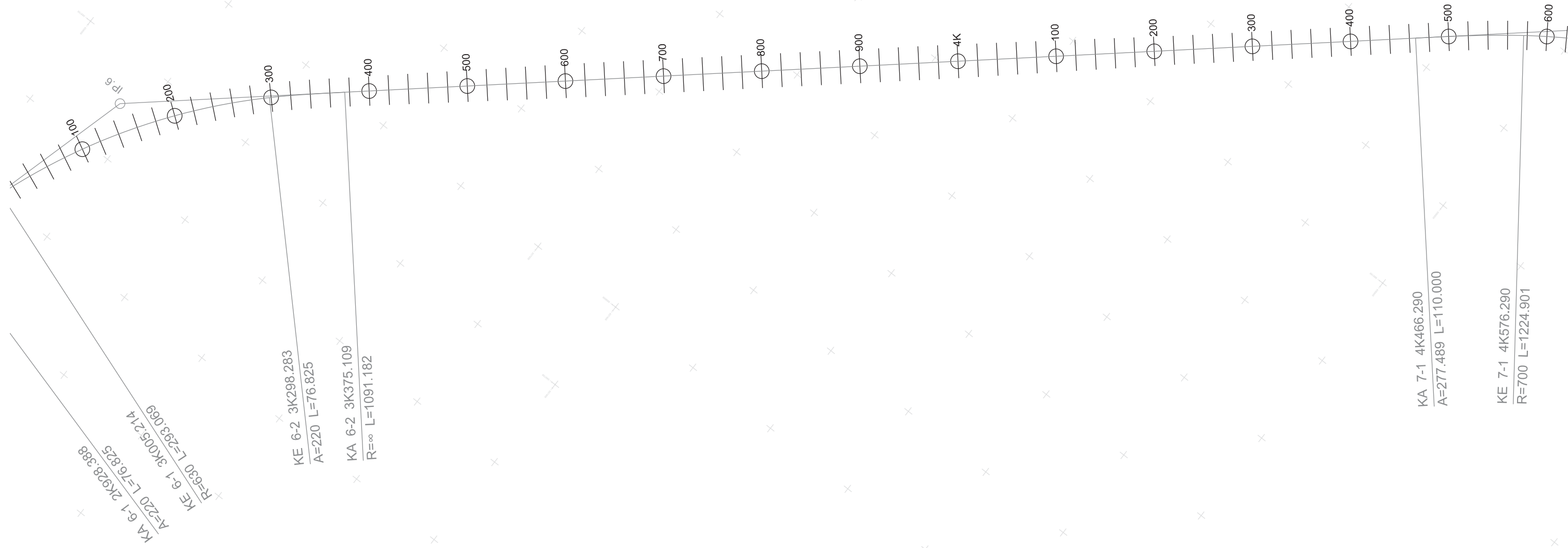
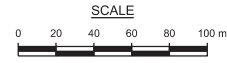


THE FEASIBILITY STUDY ON PANAMA CITY URBAN TRANSPORTATION LINE-3 PROJECT					
DRAWN:	DATE:	RECEIVED BY:	SUBMITTED BY:	CHECKED BY:	PAGE:
DESIGNED:	SCALE:	TEAM LEADER/URBAN RAILWAY PLANNING	CIVIL AND FACILITY PLANNING	APPROVED BY:	8 / 15

REMARKS:
Alignment of 4th Panama Canal Bridge (2 of 5)

Alignment of 4th Panama Canal Bridge (3 of 5) S=1:4,000

NAME	STATION	X	Y	CURVE	LENGTH
KE6-1	3K005.214	989,894.678160	657,963.802445	R=630.000000	293.069
KE6-2	3K298.283	989,649.115259	657,808.719611	A=220.000000	76.825
KA6-2	3K375.109	989,597.647590	657,751.699698	R=∞	1,091.182
KA7-1	4K466.290	988,883.123222	656,926.998466	A=277.489000	110.000
KE7-1	4K576.290	988,813.314094	656,842.027337		



SECRETARIA DEL METRO DE PANAMA



JAPAN INTERNATIONAL COOPERATION AGENCY

THE FEASIBILITY STUDY ON PANAMA CITY URBAN TRANSPORTATION LINE-3 PROJECT

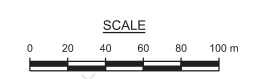
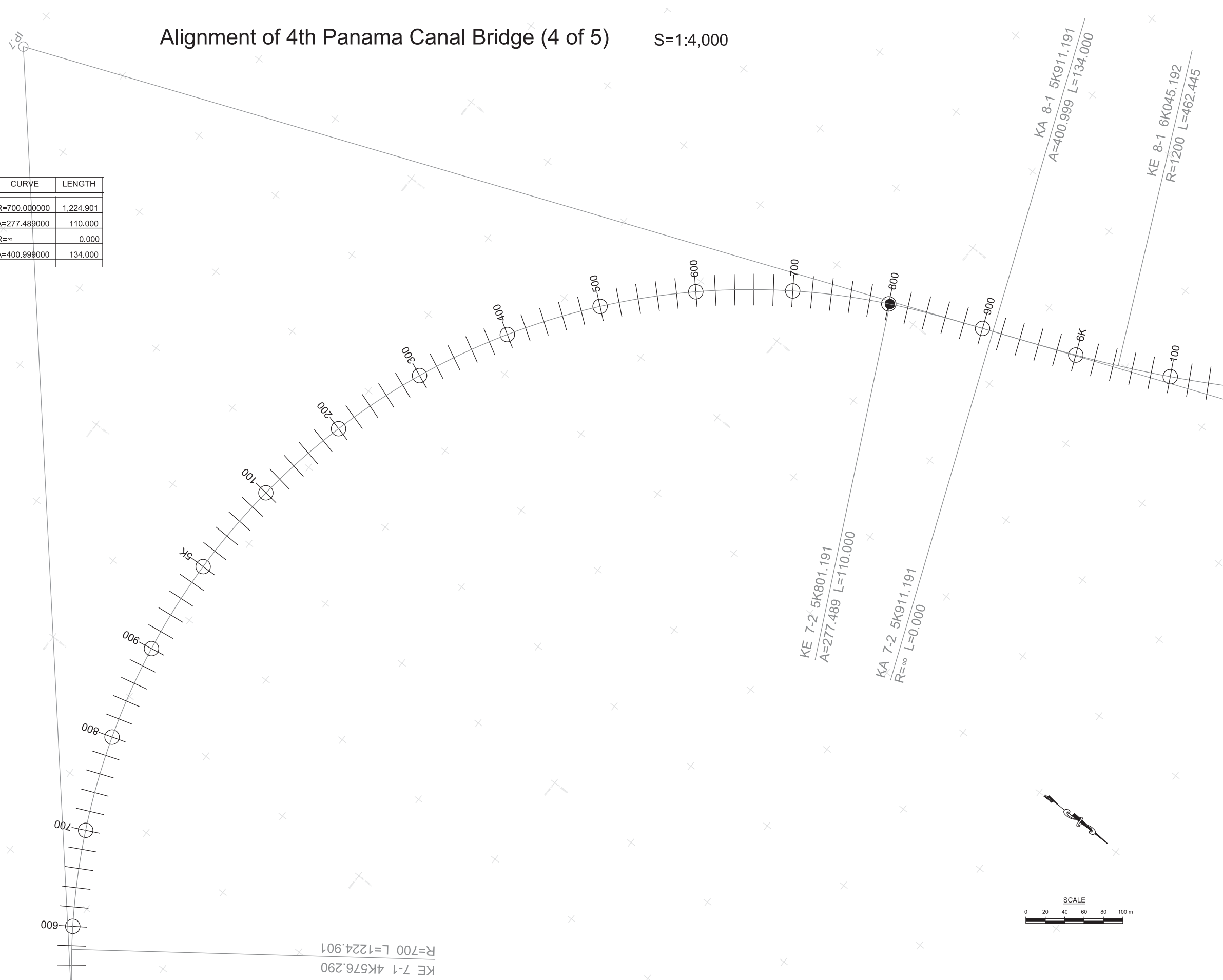
DRAWN:	DATE: May 2014	RECEIVED BY:	SUBMITTED BY:	CHECKED BY:	PAGE: 9
DESIGNED:	SCALE: S=1:4,000	TEAM LEADER/URBAN RAILWAY PLANNING	CIVIL AND FACILITY PLANNING	APPROVED BY:	15

REMARKS:
Alignment of 4th Panama Canal Bridge (3 of 5)

Alignment of 4th Panama Canal Bridge (4 of 5)

S=1:4,000

NAME	STATION	X	Y	CURVE	LENGTH
KE7-1	4K576.290	988,813.314094	656,842.027337	R=700.000000	1,224.901
KE7-2	5K801.191	989,068.265953	655,798.214949	A=277.489000	110.000
KA7-2	5K911.191	989,169.386219	655,754.993436	R=∞	0.000
KA8-1	5K911.191	989,169.386219	655,754.993436	A=400.999000	134.000
KE8-1	6K045.192	989,292.981275	655,703.269829		

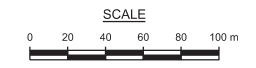
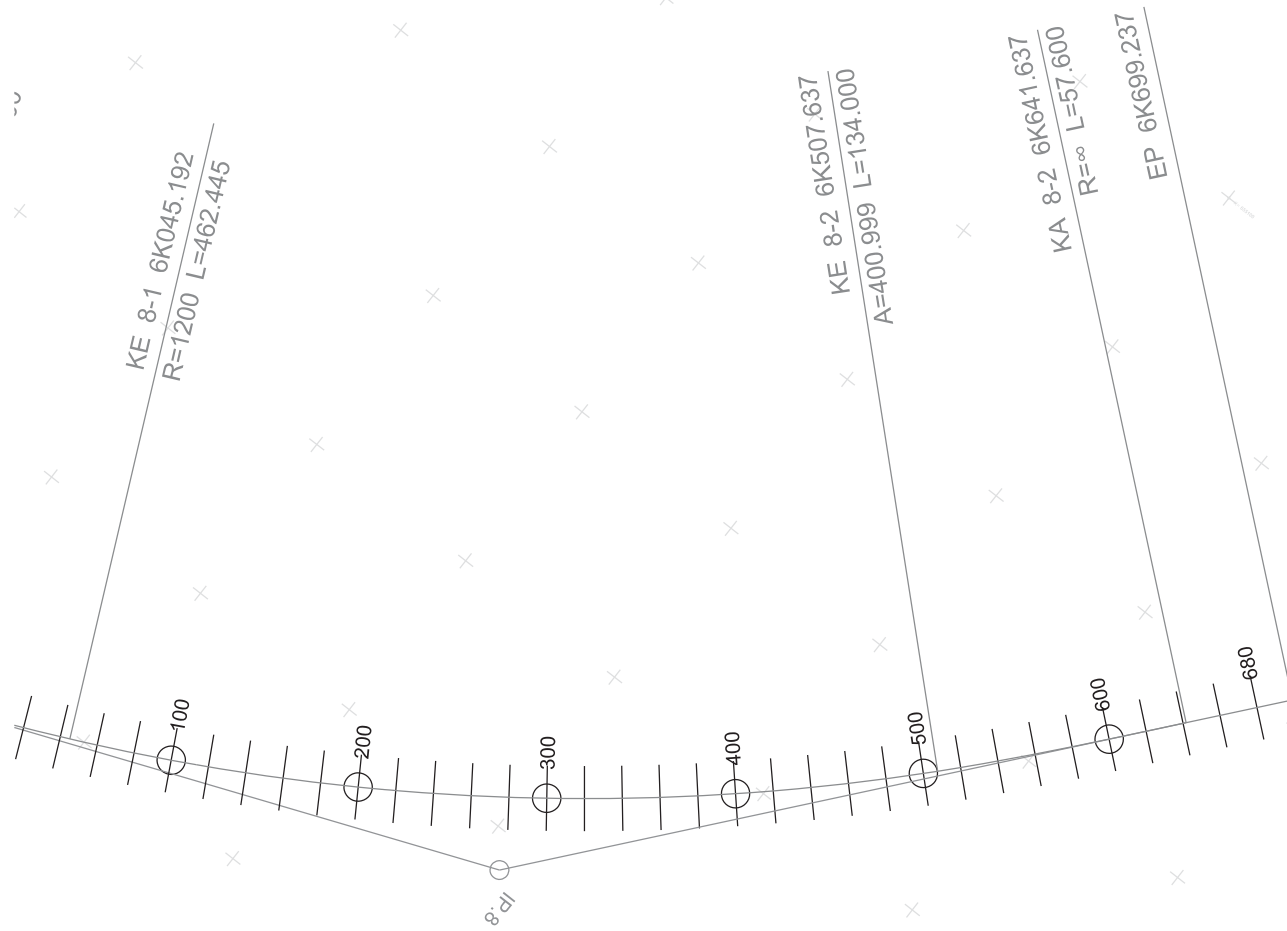


THE FEASIBILITY STUDY ON PANAMA CITY URBAN TRANSPORTATION LINE-3 PROJECT					
DRAWN:	DATE: May 2014	RECEIVED BY:	SUBMITTED BY:	CHECKED BY:	PAGE: 10/15
DESIGNED:	SCALE: S=1:4,000	TEAM LEADER/URBAN RAILWAY PLANNING	CIVIL AND FACILITY PLANNING	APPROVED BY:	

REMARKS:
Alignment of 4th Panama Canal Bridge (4 of 5)

Alignment of 4th Panama Canal Bridge (5 of 5) S=1:4,000

NAME	STATION	X	Y	CURVE	LENGTH
KE8-1	6K045.192	989,292.981275	655,703.269829	R=1,200.000000	462.445
KE8-2	6K507.637	989,665.353268	655,433.898538		
KA8-2	6K641.637	989,753.156916	655,332.697804	A=400.999000	134.000
EP	6K699.237	989,790.088376	655,288.495685	R=∞	57.600



SECRETARIA DEL METRO DE PANAMÁ



JAPAN INTERNATIONAL COOPERATION AGENCY

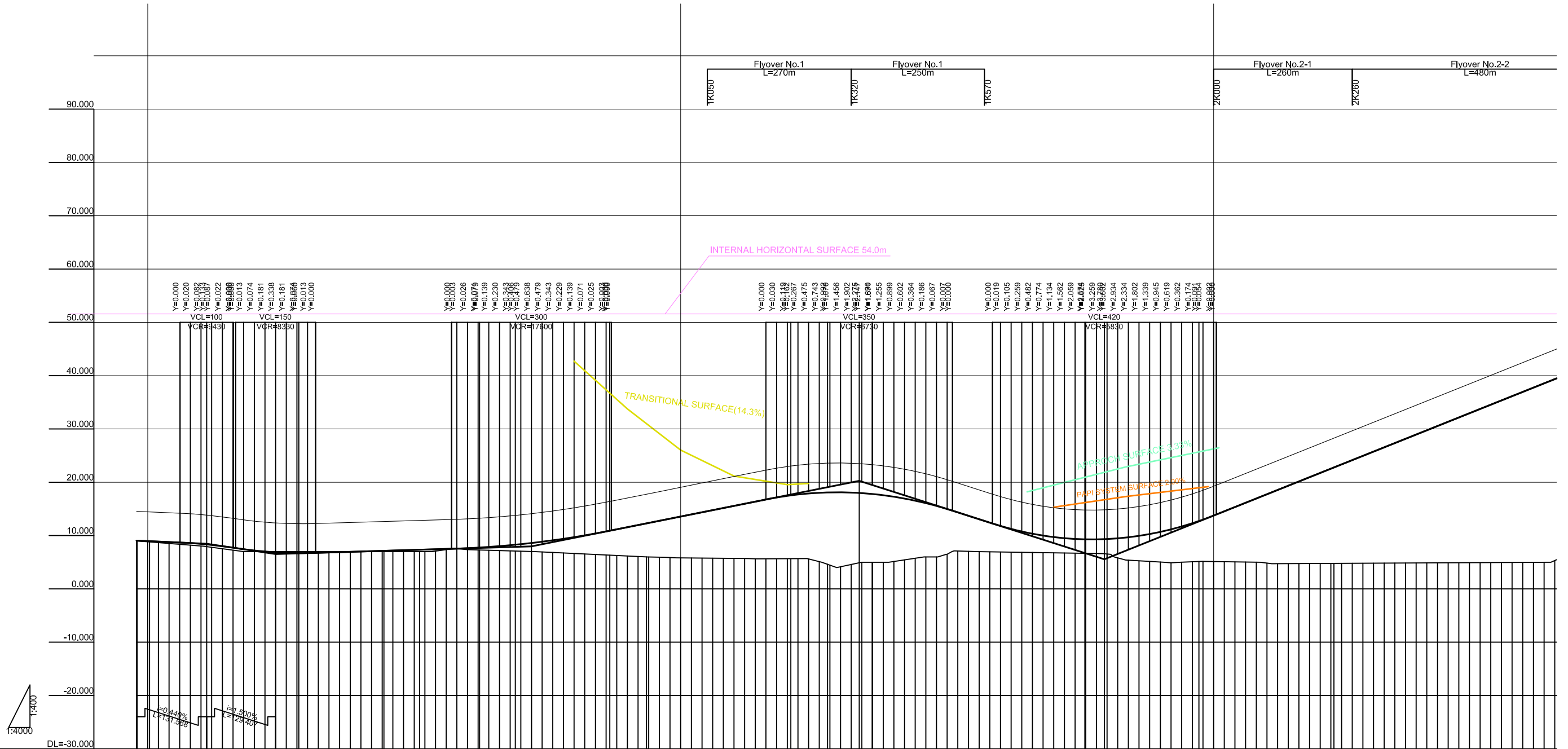
THE FEASIBILITY STUDY ON PANAMA CITY URBAN TRANSPORTATION LINE-3 PROJECT

DRAWN:	DATE: May 2014	RECEIVED BY:	SUBMITTED BY:	CHECKED BY:	PAGE:
DESIGNED:	SCALE: S=1:4,000	TEAM LEADER/URBAN RAILWAY PLANNING	CIVIL AND FACILITY PLANNING	APPROVED BY:	11/15

REMARKS:
Alignment of 4th Panama Canal Bridge (5 of 5)

Profile of 4th Panama Canal Bridge (1 of 3)

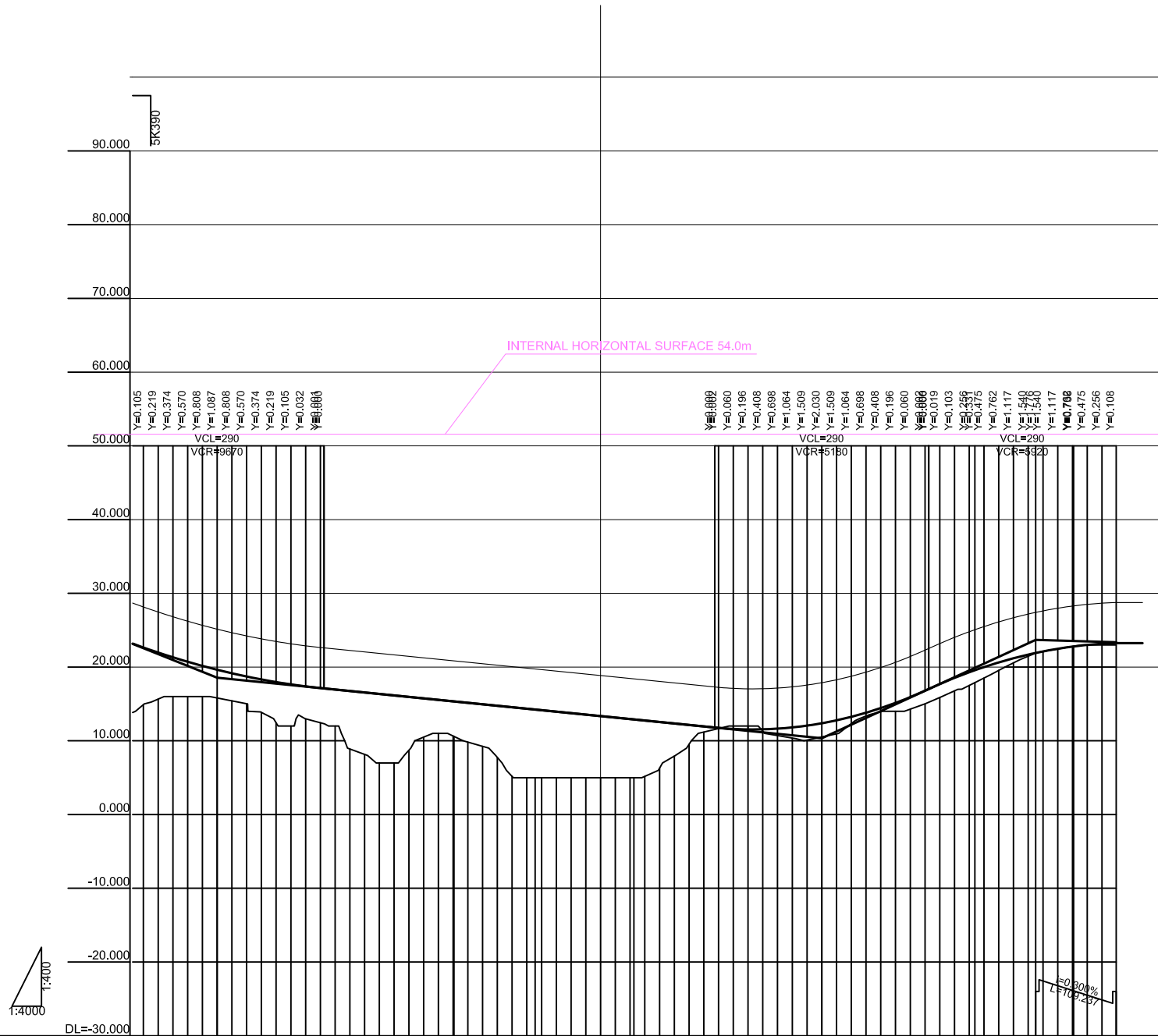
V=1:400
H=1:4000



Gradient	Proposed Height	Ground Height	Station	Curve	Superelevation
9.050	9.046	8.002	E+026.000	R=160.000 L=24.367	2.000
8.471	8.878	8.878	E+027.000	R=5000.000 L=280.116	2.000
6.530	8.694	8.514	060.000	R=∞ L=159.596	2.000
	8.596	8.355	080.000	L=67.000 R=500.000	2.000
	8.436	8.196	100.000	L=112.553 R=500.000	2.000
	8.243	8.006	120.000	L=67.118 R=500.000	2.000
	8.006	7.753	140.000	L=177.279 R=3000.000	2.000
	7.730	7.484	160.000	R=63.172 L=10.989	2.000
	7.444	7.204	180.000	L=172.983 R=60.789	2.000
	7.204	7.012	200.000	L=83.623 R=212.501	2.000
	7.012	7.000	220.000	L=399.117 R=540.000	2.000
	6.868	7.000	240.000	L=214.074 R=300.000	2.000
	6.772	7.000	260.000	A=527.861 L=253.307	2.000
	6.724	7.000	280.000	R=1100.000 L=646.362	2.000
	6.720	7.000	300.000		2.000
	6.770	7.000	320.000		2.000
	6.830	7.000	340.000		2.000
	6.890	7.000	360.000		2.000
	6.950	7.000	380.000		2.000
	7.010	7.000	400.000		2.000
	7.070	7.000	420.000		2.000
	7.130	7.000	440.000		2.000
	7.188	7.000	460.000		2.000
	7.246	7.000	480.000		2.000
	7.304	7.000	500.000		2.000
	7.370	7.000	520.000		2.000
	7.430	7.000	540.000		2.000
	7.490	7.000	560.000		2.000
	7.553	7.000	580.000		2.000
	7.616	7.000	600.000		2.000
	7.679	7.000	620.000		2.000
	7.741	7.000	640.000		2.000
	7.804	7.000	660.000		2.000
	7.866	7.000	680.000		2.000
	7.929	7.000	700.000		2.000
	8.000	7.000	720.000		2.000
	8.069	7.000	740.000		2.000
	8.138	7.000	760.000		2.000
	8.206	7.000	780.000		2.000
	8.275	7.000	800.000		2.000
	8.343	7.000	820.000		2.000
	8.411	7.000	840.000		2.000
	8.479	7.000	860.000		2.000
	8.547	7.000	880.000		2.000
	8.615	7.000	900.000		2.000
	8.683	7.000	920.000		2.000
	8.751	7.000	940.000		2.000
	8.819	7.000	960.000		2.000
	8.887	7.000	980.000		2.000
	8.955	7.000	1000.000		2.000
	9.023	7.000	1020.000		2.000
	9.091	7.000	1040.000		2.000
	9.159	7.000	1060.000		2.000
	9.227	7.000	1080.000		2.000
	9.295	7.000	1100.000		2.000
	9.363	7.000	1120.000		2.000
	9.431	7.000	1140.000		2.000
	9.499	7.000	1160.000		2.000
	9.567	7.000	1180.000		2.000
	9.635	7.000	1200.000		2.000
	9.703	7.000	1220.000		2.000
	9.771	7.000	1240.000		2.000
	9.839	7.000	1260.000		2.000
	9.907	7.000	1280.000		2.000
	9.975	7.000	1300.000		2.000
	10.043	7.000	1320.000		2.000
	10.111	7.000	1340.000		2.000
	10.179	7.000	1360.000		2.000
	10.247	7.000	1380.000		2.000
	10.315	7.000	1400.000		2.000
	10.383	7.000	1420.000		2.000
	10.451	7.000	1440.000		2.000
	10.519	7.000	1460.000		2.000
	10.587	7.000	1480.000		2.000
	10.655	7.000	1500.000		2.000
	10.723	7.000	1520.000		2.000
	10.791	7.000	1540.000		2.000
	10.859	7.000	1560.000		2.000
	10.927	7.000	1580.000		2.000
	10.995	7.000	1600.000		2.000
	11.063	7.000	1620.000		2.000
	11.131	7.000	1640.000		2.000
	11.199	7.000	1660.000		2.000
	11.267	7.000	1680.000		2.000
	11.335	7.000	1700.000		2.000
	11.403	7.000	1720.000		2.000
	11.471	7.000	1740.000		2.000
	11.539	7.000	1760.000		2.000
	11.607	7.000	1780.000		2.000
	11.675	7.000	1800.000		2.000
	11.743	7.000	1820.000		2.000
	11.811	7.000	1840.000		2.000
	11.879	7.000	1860.000		2.000
	11.947	7.000	1880.000		2.000
	12.015	7.000	1900.000		2.000
	12.083	7.000	1920.000		2.000
	12.151	7.000	1940.000		2.000
	12.219	7.000	1960.000		2.000
	12.287	7.000	1980.000		2.000
	12.355	7.000	2000.000		2.000
	12.423	7.000	2020.000		2.000
	12.491	7.000	2040.000		2.000
	12.559	7.000	2060.000		2.000
	12.627	7.000	2080.000		2.000
	12.695	7.000	2100.000		2.000
	12.763	7.000	2120.000		2.000
	12.831	7.000	2140.000		2.000
	12.899	7.000	2160.000		2.000
	12.967	7.000	2180.000		2.000
	13.035	7.000	2200.000		2.000
	13.103	7.000	2220.000		2.000
	13.171	7.000	2240.000		2.000
	13.239	7.000	2260.000		2.000
	13.307	7.000	2280.000		2.000
	13.375	7.000	2300.000		2.000
	13.443	7.000	2320.000		2.000
	13.511	7.000	2340.000		2.000
	13.579	7.000	2360.000		2.000
	13.647	7.000	2380.000		2.000
	13.715	7.000	2400.000		2.000
	13.783	7.000	2420.000		2.000
	13.851	7.000	2440.000		2.000
	13.919	7.000	2460.000		2.000
	13.987	7.000	2480.000		2.000
	14.055	7.000	2500.000		2.000
	14.123	7.000	2520.000		2.000
	14.191	7.000	2540.000		2.000
	14.259	7.000	2560.000		2.000
	14.327	7.000	2580.000		2.000
	14.395	7.000	2600.000		2.000
	14.463	7.000	2620.000		2.000
	14.531	7.000	2640.000		2.000
	14.599	7.000	2660.000		2.000
	14.667	7.000	2680.000		2.000
	14.735	7.000	2700.000		2.000
	14.803	7.000	2720.000		2.000
	14.871	7.000	2740.000		2.000
	14.939	7.000	2760.000		2.000
	15.007	7.000	2780.000		2.000
	15.075	7.000	2800.000		2.000
	15.143	7.000	2820.000		2.000
	15.211	7.000	2840.000		2.000
	15.279	7.000	2860.000		2.000
	15.347	7.000	2880.000		2.000
	15.415	7.000	2900.000		2.000
	15.483	7.000	2920.000		2.000
	15.551	7.000	2940.000		2.000
	15.619	7.000	2960.000		2.000
	15.687	7.000	2980.000		2.000
	15.755	7.000	3000.000		2.000
	15.823	7.000	3020.000		2.000
	15.891	7.000	3040.000		2.000
	15.959	7.000	3060.000		2.000
	16.027	7.000	3080.000		2.000
	16.095	7.000	3100.000		2.000
	16.163	7.000	3120.000		2.000
	16.231	7.000	3140.000		2.000
	16.299	7.000	3160.000		2.000
	16.367	7.000	3180.000		2.000
	16.435	7.000	3200.000		2.000
	16.503	7.000	3220.000		2.000
	16.571	7.000	3240.000		2.000
	16.639	7.000	3260.000		2.000
	16.707	7.000	3280.000		2.000
	16.775	7.000	3300.000		2.000
	16.843	7.000	3320.000		2.000
	16.911	7.000	3340.000		2.000
	16.979	7.000	3360.000		2.000
	17.047	7.000	3380.000		2.000
	17.115	7.000	3400.000		2.000
	17.183	7.000	3420.000		2.000
	17.251	7.000	3440.000		2.000
	17.319	7.000	3460.000		2.000
	17.387	7.000	3480.000		2.000
	17.455	7.000	3500.000		2.000
	17.523	7.000	3520.000		2.000
	17.591	7.000	3540.000		2.000
	17.659	7.000	3560.000		2.000
	17.727	7.000	3580.000		2.000
	17.795	7.000	3600.000		2.000
	17.863	7.000	3620.000		2.000
	17.931	7.000			

Profile of 4th Panama Canal Bridge (3 of 3)

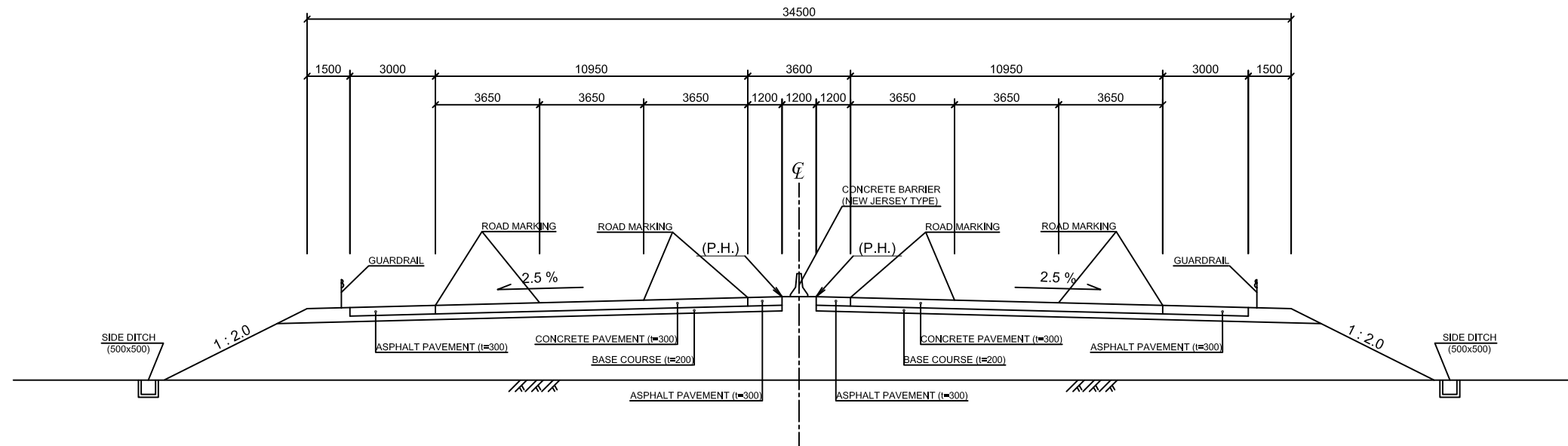
V=1:400
H=1:4000



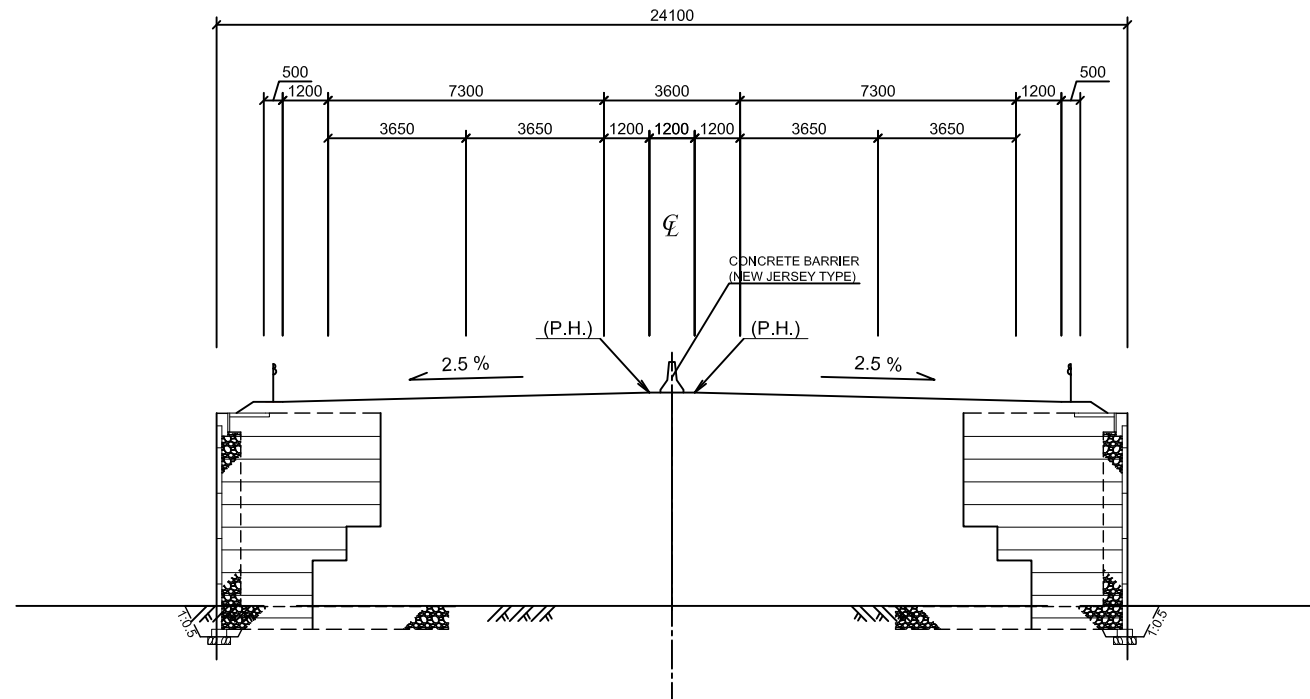
Gradient	Proposed Height	Ground Height	Station	Curve	Superelevation
18.550	22.655	14.905	380.000	L=110.000 R=∞ A=277.469 L=134.000	8.400 6.400
	21.989	15.656	400.000		
	21.324	16.000	420.000	R=1200.000 L=462.445	4.200 4.200
	20.720	16.000	440.000		
	20.158	16.000	460.000	A=400.989 R=∞ L=134.000	4.200 4.200
	19.638	15.808	480.000		
	19.158	15.417	500.000	R=∞	2.000 2.000
	18.720	15.026	520.000		
	18.324	14.635	540.000	R=∞	2.000 2.000
	17.969	14.243	560.000		
	17.655	13.852	580.000	R=∞	2.000 2.000
	17.382	13.461	600.000		
	17.151	13.070	620.000	R=∞	2.000 2.000
	16.950	12.679	640.000		
	16.750	12.288	660.000	R=∞	2.000 2.000
	16.550	11.897	680.000		
	16.350	11.506	700.000	R=∞	2.000 2.000
	16.150	11.115	720.000		
	15.950	10.724	740.000	R=∞	2.000 2.000
	15.750	10.333	760.000		
	15.550	9.942	780.000	R=∞	2.000 2.000
	15.350	9.551	800.000		
	15.150	9.160	820.000	R=∞	2.000 2.000
	14.950	8.769	840.000		
	14.750	8.378	860.000	R=∞	2.000 2.000
	14.550	7.987	880.000		
	14.350	7.596	900.000	R=∞	2.000 2.000
	14.150	7.205	920.000		
	13.950	6.814	940.000	R=∞	2.000 2.000
	13.750	6.423	960.000		
	13.550	6.032	980.000	R=∞	2.000 2.000
	13.350	5.641	1000.000		
	13.150	5.250	1020.000	R=∞	2.000 2.000
	12.950	4.859	1040.000		
	12.750	4.468	1060.000	R=∞	2.000 2.000
	12.550	4.077	1080.000		
	12.350	3.686	1100.000	R=∞	2.000 2.000
	12.150	3.295	1120.000		
	11.950	2.904	1140.000	R=∞	2.000 2.000
	11.750	2.513	1160.000		
	11.550	2.122	1180.000	R=∞	2.000 2.000
	11.350	1.731	1200.000		
	11.150	1.340	1220.000	R=∞	2.000 2.000
	10.950	0.949	1240.000		
	10.750	0.558	1260.000	R=∞	2.000 2.000
	10.550	0.167	1280.000		
	10.350	-0.224	1300.000	R=∞	2.000 2.000
	10.150	-0.633	1320.000		
	9.950	-1.042	1340.000	R=∞	2.000 2.000
	9.750	-1.451	1360.000		
	9.550	-1.860	1380.000	R=∞	2.000 2.000
	9.350	-2.269	1400.000		
	9.150	-2.678	1420.000	R=∞	2.000 2.000
	8.950	-3.087	1440.000		
	8.750	-3.496	1460.000	R=∞	2.000 2.000
	8.550	-3.905	1480.000		
	8.350	-4.314	1500.000	R=∞	2.000 2.000
	8.150	-4.723	1520.000		
	7.950	-5.132	1540.000	R=∞	2.000 2.000
	7.750	-5.541	1560.000		
	7.550	-5.950	1580.000	R=∞	2.000 2.000
	7.350	-6.359	1600.000		
	7.150	-6.768	1620.000	R=∞	2.000 2.000
	6.950	-7.177	1640.000		
	6.750	-7.586	1660.000	R=∞	2.000 2.000
	6.550	-7.995	1680.000		
	6.350	-8.404	1700.000	R=∞	2.000 2.000
	6.150	-8.813	1720.000		
	5.950	-9.222	1740.000	R=∞	2.000 2.000
	5.750	-9.631	1760.000		
	5.550	-10.040	1780.000	R=∞	2.000 2.000
	5.350	-10.449	1800.000		
	5.150	-10.858	1820.000	R=∞	2.000 2.000
	4.950	-11.267	1840.000		
	4.750	-11.676	1860.000	R=∞	2.000 2.000
	4.550	-12.085	1880.000		
	4.350	-12.494	1900.000	R=∞	2.000 2.000
	4.150	-12.903	1920.000		
	3.950	-13.312	1940.000	R=∞	2.000 2.000
	3.750	-13.721	1960.000		
	3.550	-14.130	1980.000	R=∞	2.000 2.000
	3.350	-14.539	2000.000		
	3.150	-14.948	2020.000	R=∞	2.000 2.000
	2.950	-15.357	2040.000		
	2.750	-15.766	2060.000	R=∞	2.000 2.000
	2.550	-16.175	2080.000		
	2.350	-16.584	2100.000	R=∞	2.000 2.000
	2.150	-16.993	2120.000		
	1.950	-17.402	2140.000	R=∞	2.000 2.000
	1.750	-17.811	2160.000		
	1.550	-18.220	2180.000	R=∞	2.000 2.000
	1.350	-18.629	2200.000		
	1.150	-19.038	2220.000	R=∞	2.000 2.000
	0.950	-19.447	2240.000		
	0.750	-19.856	2260.000	R=∞	2.000 2.000
	0.550	-20.265	2280.000		
	0.350	-20.674	2300.000	R=∞	2.000 2.000
	0.150	-21.083	2320.000		
	0.000	-21.492	2340.000	R=∞	2.000 2.000
	0.000	-21.901	2360.000		
	0.000	-22.310	2380.000	R=∞	2.000 2.000
	0.000	-22.719	2400.000		
	0.000	-23.128	2420.000	R=∞	2.000 2.000
	0.000	-23.537	2440.000		
	0.000	-23.946	2460.000	R=∞	2.000 2.000
	0.000	-24.355	2480.000		
	0.000	-24.764	2500.000	R=∞	2.000 2.000
	0.000	-25.173	2520.000		
	0.000	-25.582	2540.000	R=∞	2.000 2.000
	0.000	-25.991	2560.000		
	0.000	-26.400	2580.000	R=∞	2.000 2.000
	0.000	-26.809	2600.000		
	0.000	-27.218	2620.000	R=∞	2.000 2.000
	0.000	-27.627	2640.000		
	0.000	-28.036	2660.000	R=∞	2.000 2.000
	0.000	-28.445	2680.000		
	0.000	-28.854	2700.000	R=∞	2.000 2.000
	0.000	-29.263	2720.000		
	0.000	-29.672	2740.000	R=∞	2.000 2.000
	0.000	-30.081	2760.000		
	0.000	-30.490	2780.000	R=∞	2.000 2.000
	0.000	-30.899	2800.000		
	0.000	-31.308	2820.000	R=∞	2.000 2.000
	0.000	-31.717	2840.000		
	0.000	-32.126	2860.000	R=∞	2.000 2.000
	0.000	-32.535	2880.000		
	0.000	-32.944	2900.000	R=∞	2.000 2.000
	0.000	-33.353	2920.000		
	0.000	-33.762	2940.000	R=∞	2.000 2.000
	0.000	-34.171	2960.000		
	0.000	-34.580	2980.000	R=∞	2.000 2.000
	0.000	-34.989	3000.000		
	0.000	-35.398	3020.000	R=∞	2.000 2.000
	0.000	-35.807	3040.000		
	0.000	-36.216	3060.000	R=∞	2.000 2.000
	0.000	-36.625	3080.000		
	0.000	-37.034	3100.000	R=∞	2.000 2.000
	0.000	-37.443	3120.000		
	0.000	-37.852	3140.000	R=∞	2.000 2.000
	0.000	-38.261	3160.000		
	0.000	-38.670	3180.000	R=∞	2.000 2.000
	0.000	-39.079	3200.000		
	0.000	-39.488	3220.000	R=∞	2.000 2.000
	0.000	-39.897	3240.000		
	0.000	-40.306	3260.000	R=∞	2.000 2.000
	0.000	-40.715	3280.000		
	0.000	-41.124	3300.000	R=∞	2.000 2.000
	0.000	-41.533	3320.000		
	0.000	-41.942	3340.000	R=∞	2.000 2.000
	0.000	-42.351	3360.000		
	0.000	-42.760	3380.000	R=∞	2.000 2.000
	0.000	-43.169	3400.000		
	0.000	-43.578	3420.000	R=∞	2.000 2.000
	0.000	-43.987	3440.000		
	0.000	-44.396	3460.000	R=∞	2.000 2.000
	0.000	-44.805	3480.000		
	0.000	-45.214	3500.000	R=∞	2.000 2.000
	0.000	-45.623	3520.000		
	0.000	-46.032	3540.000	R=∞	2.000 2.000
	0.000	-46.441	3560.000		
	0.000	-46.850	3580.000	R=∞	2.000 2.000
	0.000	-47.259	3600.000		
	0.000	-47.668	3620.000	R=∞	2.000 2.000
	0.000	-48.077	3640.000		
	0.000	-48.486	3660.000	R=∞	2.000 2.000
	0.000	-48.895	3680.000		
	0.000	-49.304	3700.000	R=∞	2.000 2.000
	0.000	-49.713	3720.000		
	0.000	-50.122	3740.000	R=∞	2.000 2.000
	0.000	-50.531	3760.000		
	0.000	-50.940	3780.000	R=∞	2.000 2.000
	0.000	-51.349	3800.000		
	0.000	-51.758	3820.000	R=∞	2.000 2.000
	0.000	-52.167	3840.000		
	0.000	-52.576	3860.000	R=∞	2.000 2.000
	0.000	-52.985	3880.000		
	0.000	-53.394	3900.000	R=∞	2.000 2.000
	0.000	-53.803	3920.000		
	0.000	-54.212	3940.000	R=∞	2.000 2.000
	0.000	-54.621	3960.000		
	0.000	-55.030	3980.000	R=∞	2.000 2.000
	0.000	-55.439	4000.000		
	0.000	-55.848	4020		

Typical Cross Sections S=1:200

EARTH WORK (6 LANE WITHOUT SIDE WALK)



REINFORCED EARTH (4 LANE WITHOUT SIDE WALK)



SECRETARIA DEL METRO DE PANAMA



JAPAN INTERNATIONAL COOPERATION AGENCY

THE FEASIBILITY STUDY ON PANAMA CITY URBAN TRANSPORTATION LINE-3 PROJECT

DRAWN:
DESIGNED:

DATE: May 2014
SCALE: S=1:200

RECEIVED BY:
TEAM LEADER/URBAN RAILWAY PLANNING

SUBMITTED BY:
CIVIL AND FACILITY PLANNING

CHECKED BY:
APPROVED BY:

PAGE: 15/15

REMARKS:

Typical Cross Sections