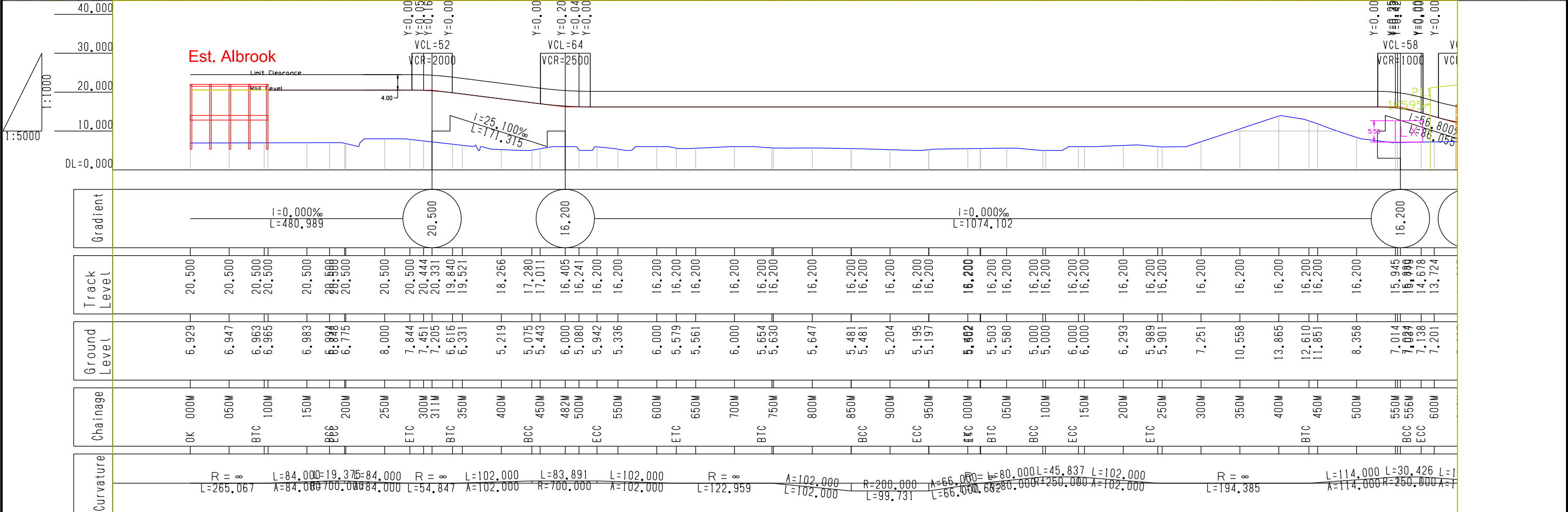
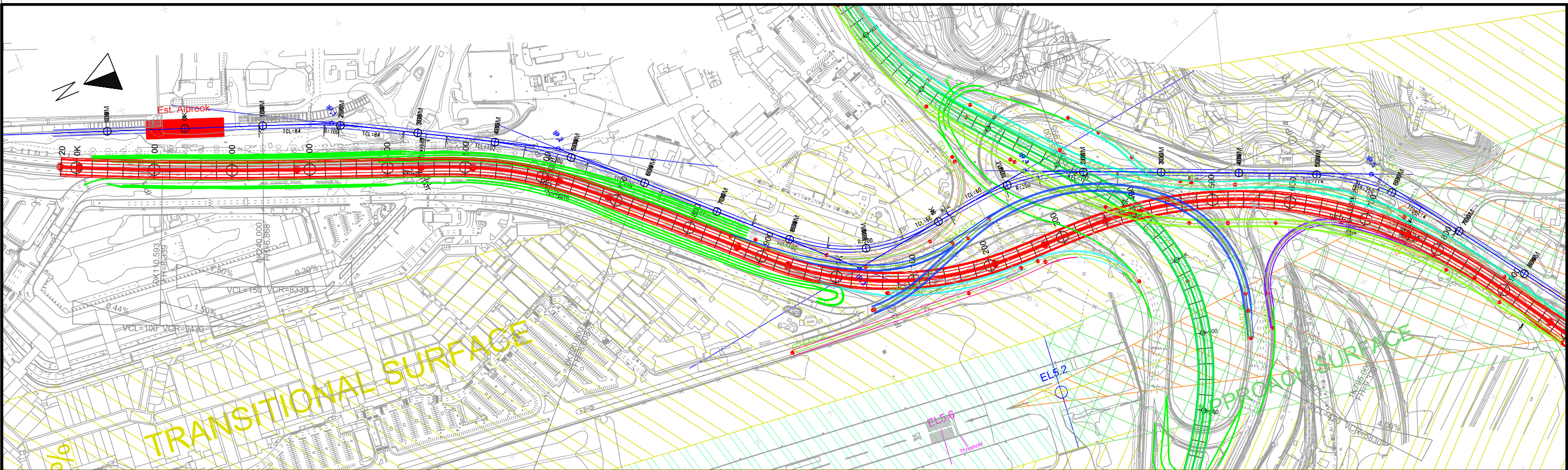
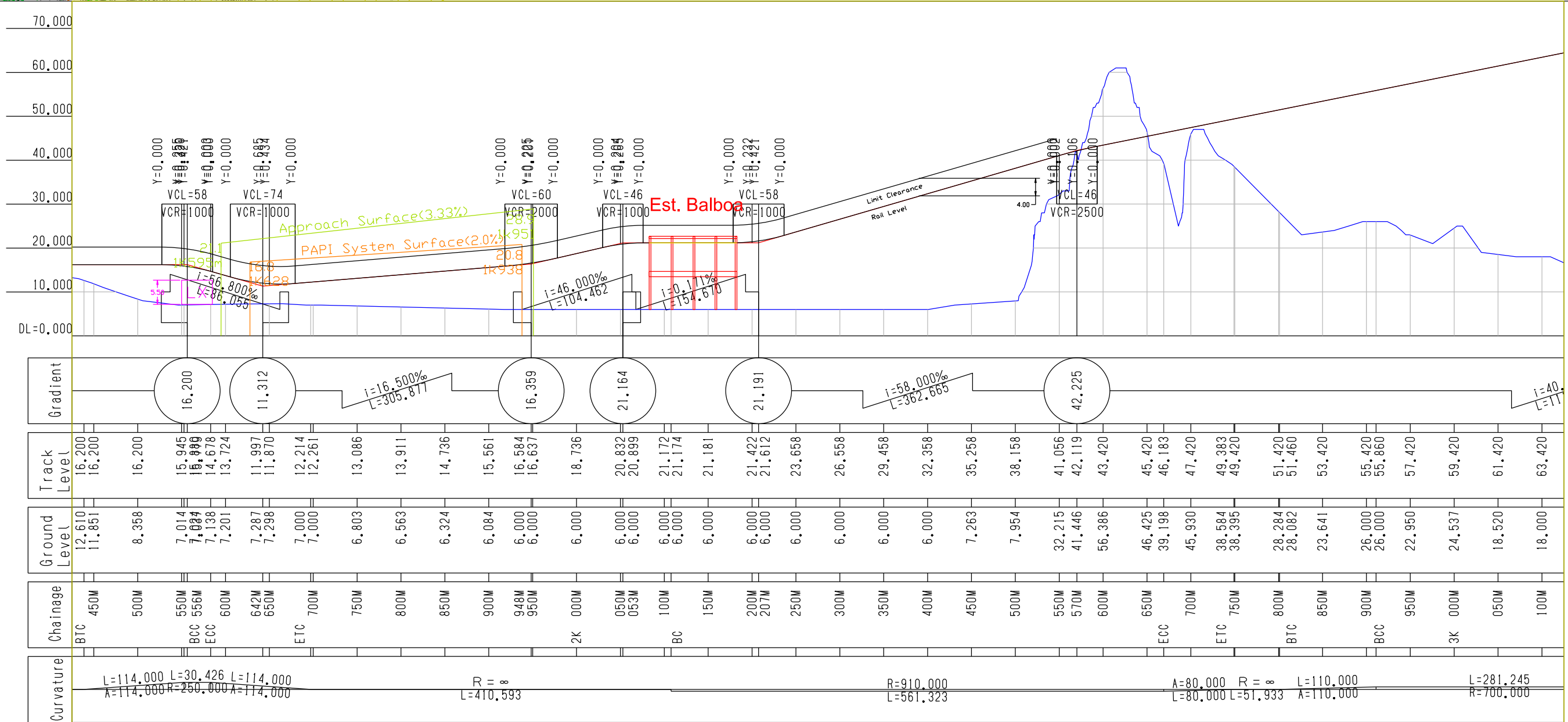
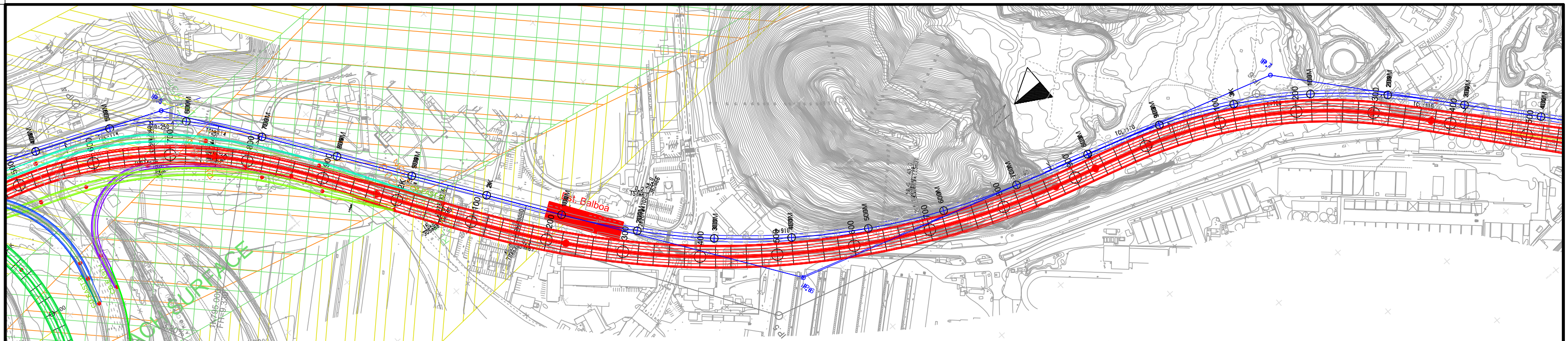


付属資料 4: 概略設計図面(3号線)

4-1 平面図及び縦断図





SECRETARIA DEL METRO DE PANAMA



JAPAN INTERNATIONAL COOPERATION AGENCY

THE FEASIBILITY STUDY ON PANAMA CITY URBAN TRANSPORTATION LINE-3 PROJECT

DRAWN: _____
DESIGNED: _____

DATE: August 2014
SCALE(A3): Plan 1:5,000
Profile 1:5,000(X) and 1:1,000(Y)

RECEIVED BY: _____
TEAM LEADER/URBAN RAILWAY PLANNING

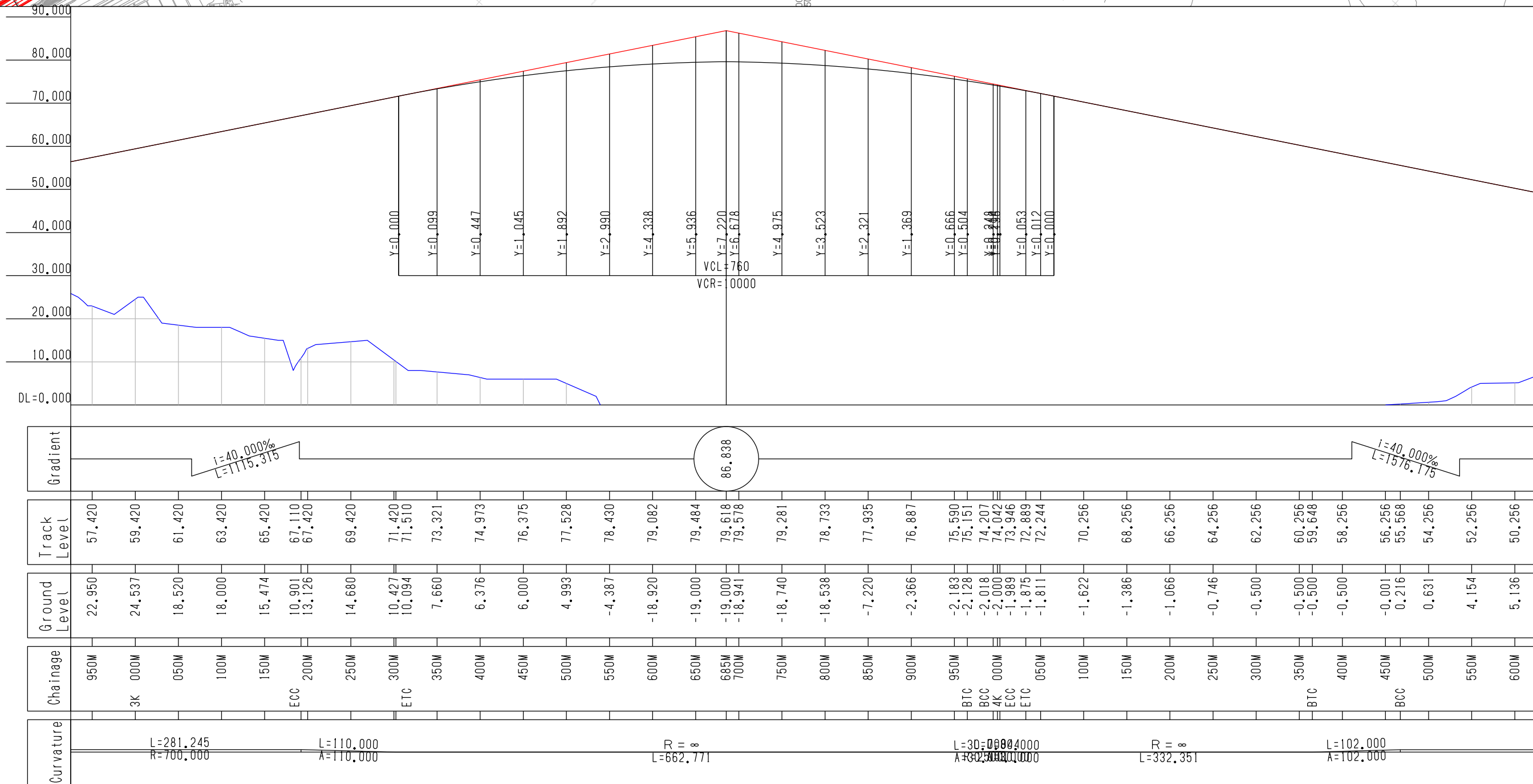
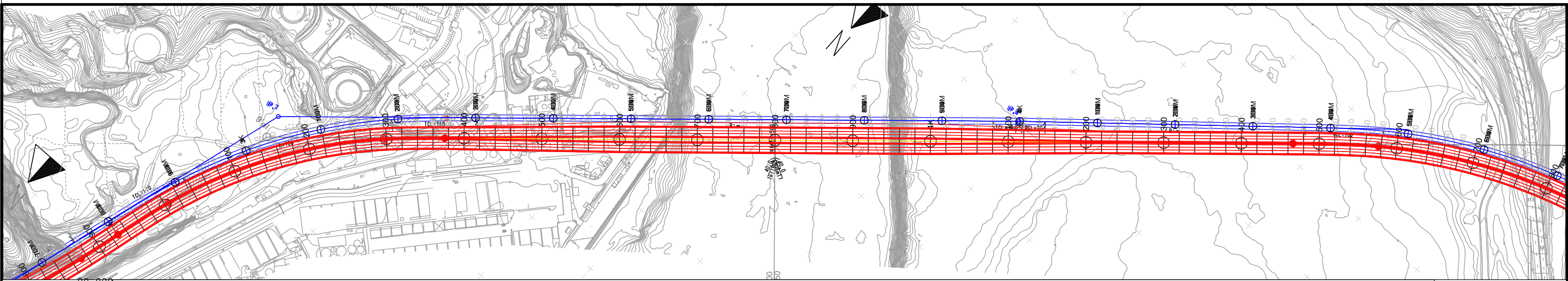
SUBMITTED BY: _____
CIVIL AND FACILITY PLANNING

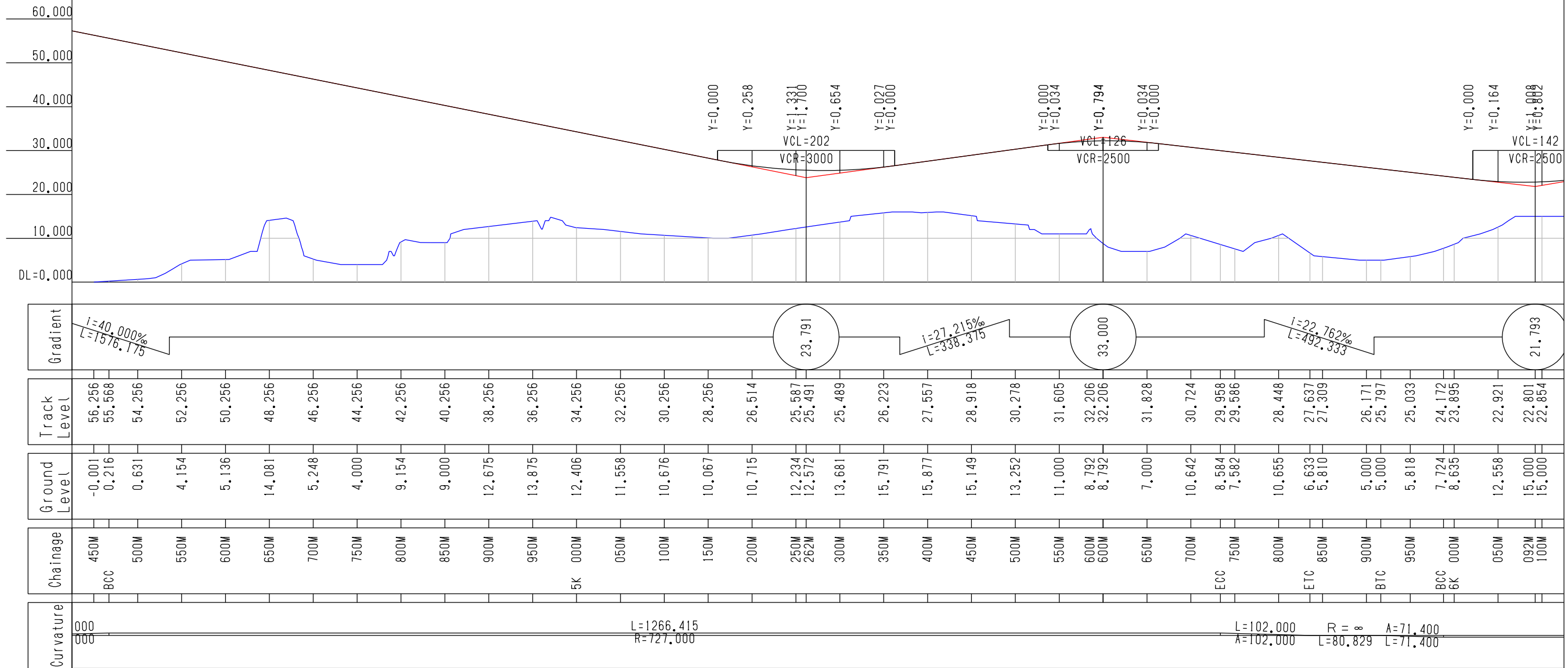
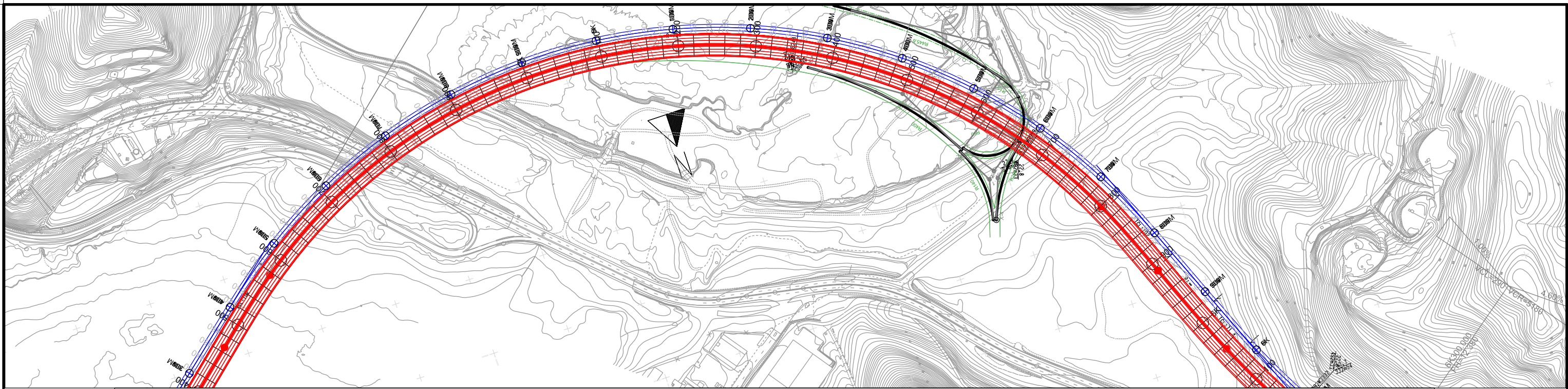
CHECKED BY: _____
APPROVED BY: _____

PAGE: 2
18

REMARKS:

Alignment Plan(FR)
(1K500M000 ~ 3K000M000)





SECRETARIA DEL METRO DE PANAMA



JAPAN INTERNATIONAL COOPERATION AGENCY

THE FEASIBILITY STUDY ON PANAMA CITY URBAN TRANSPORTATION LINE-3 PROJECT

DRAWN: _____
DESIGNED: _____

DATE: August 2014
SCALE(A3): Plan 1:5,000
Profile 1:5,000(X) and 1:1,000(Y)

RECEIVED BY: _____
TEAM LEADER/URBAN RAILWAY PLANNING

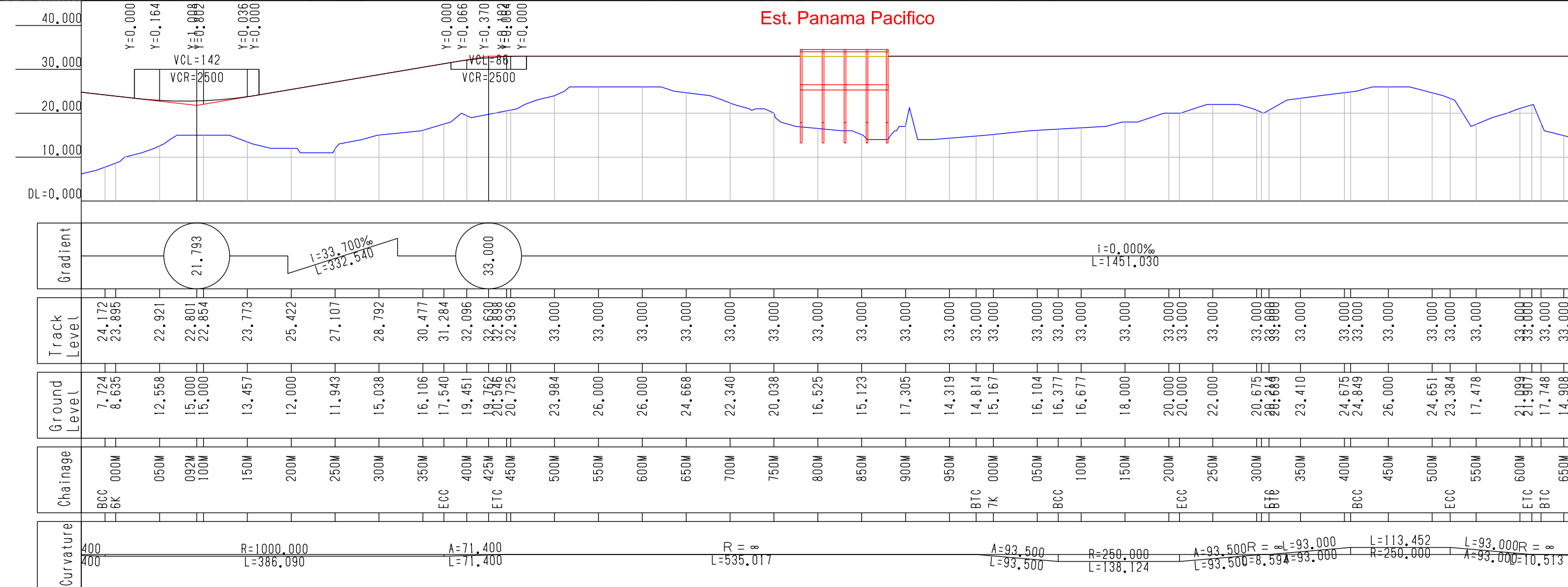
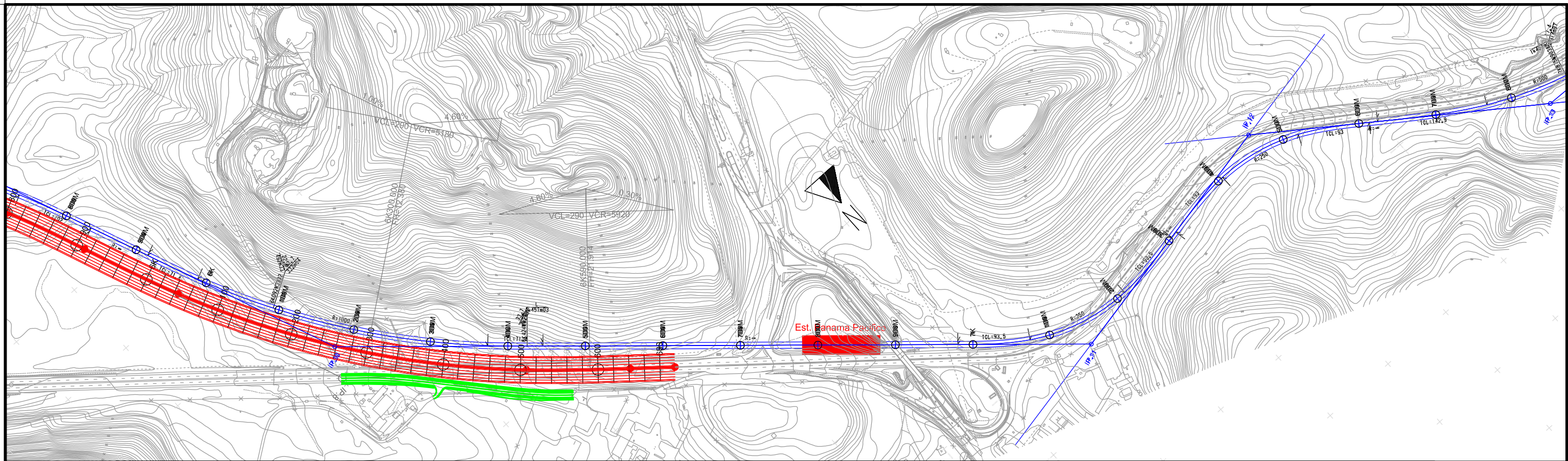
SUBMITTED BY: _____
CIVIL AND FACILITY PLANNING

CHECKED BY: _____
APPROVED BY: _____

PAGE: 4
18

REMARKS:

Alignment Plan(FR)
(4K500M000 ~ 6K000M000)



Curvature	Chainage	Ground Level	Track Level	Gradient
400	BCC 000M	7.724	24.172	
400	6K 050M	8.635	23.895	
		12.558	22.921	
		15.000	22.801	
		15.000	22.854	
		13.457	23.773	
		12.000	25.422	
		11.943	27.107	
		15.038	28.792	
		16.106	30.477	
		17.540	31.284	
		19.451	32.096	
		19.762	32.638	
		20.546	32.936	
		20.725	32.936	
		23.984	33.000	
		26.000	33.000	
		26.000	33.000	
		24.668	33.000	
		22.340	33.000	
		20.038	33.000	
		16.525	33.000	
		15.123	33.000	
		17.305	33.000	
		14.319	33.000	
		14.814	33.000	
		15.167	33.000	
		16.104	33.000	
		16.377	33.000	
		16.677	33.000	
		18.000	33.000	
		20.000	33.000	
		20.000	33.000	
		22.000	33.000	
		20.675	33.000	
		20.869	33.000	
		23.410	33.000	
		24.675	33.000	
		24.849	33.000	
		26.000	33.000	
		24.651	33.000	
		23.384	33.000	
		17.478	33.000	
		21.997	33.000	
		17.748	33.000	
		14.908	33.000	



SECRETARIA DEL METRO DE PANAMA

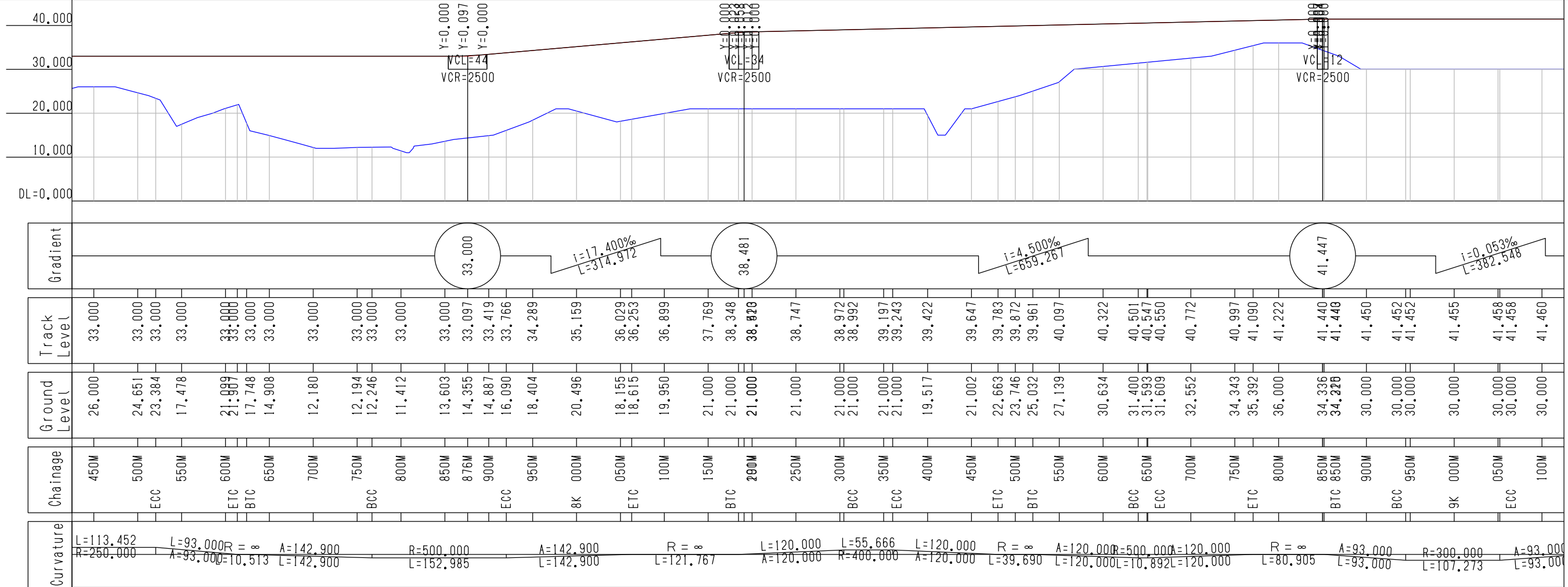
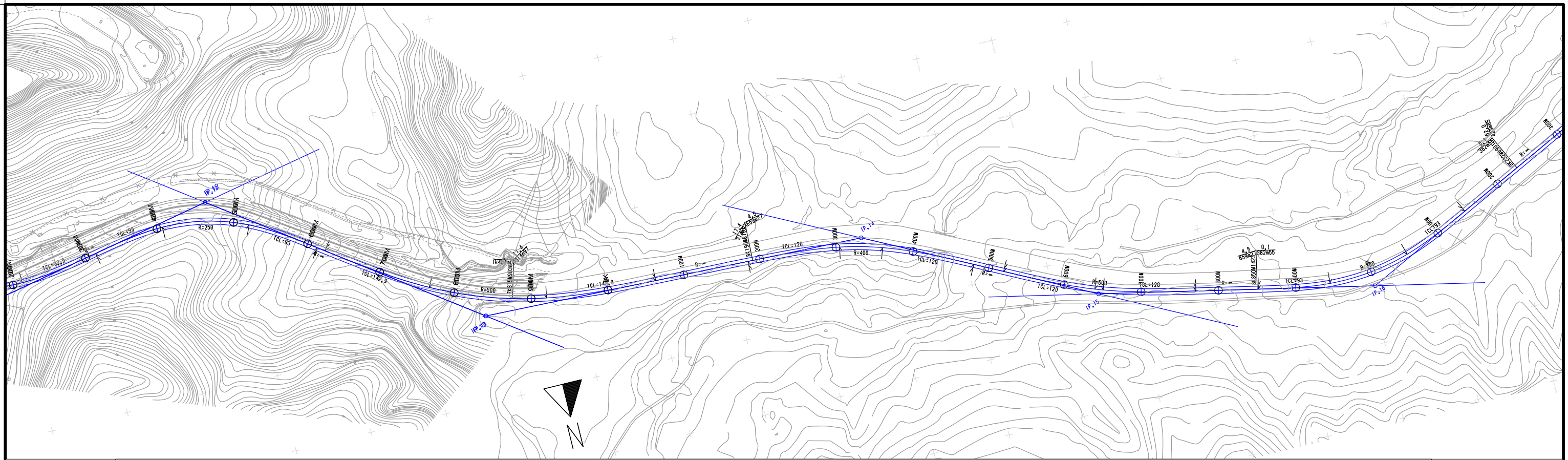


JAPAN INTERNATIONAL COOPERATION AGENCY

THE FEASIBILITY STUDY ON PANAMA CITY URBAN TRANSPORTATION LINE-3 PROJECT

DRAWN:	DATE: August 2014	RECEIVED BY:	SUBMITTED BY:	CHECKED BY:	PAGE: 5
DESIGNED:	SCALE(A3): Plan 1:5,000 Profile 1:5,000(X) and 1:1,000(Y)	TEAM LEADER/URBAN RAILWAY PLANNING	CIVIL AND FACILITY PLANNING	APPROVED BY:	18

REMARKS:
Alignment Plan(FR)
(6K000M000 ~ 7K500M000)



SECRETARIA DEL METRO DE PANAMA



JAPAN INTERNATIONAL COOPERATION AGENCY

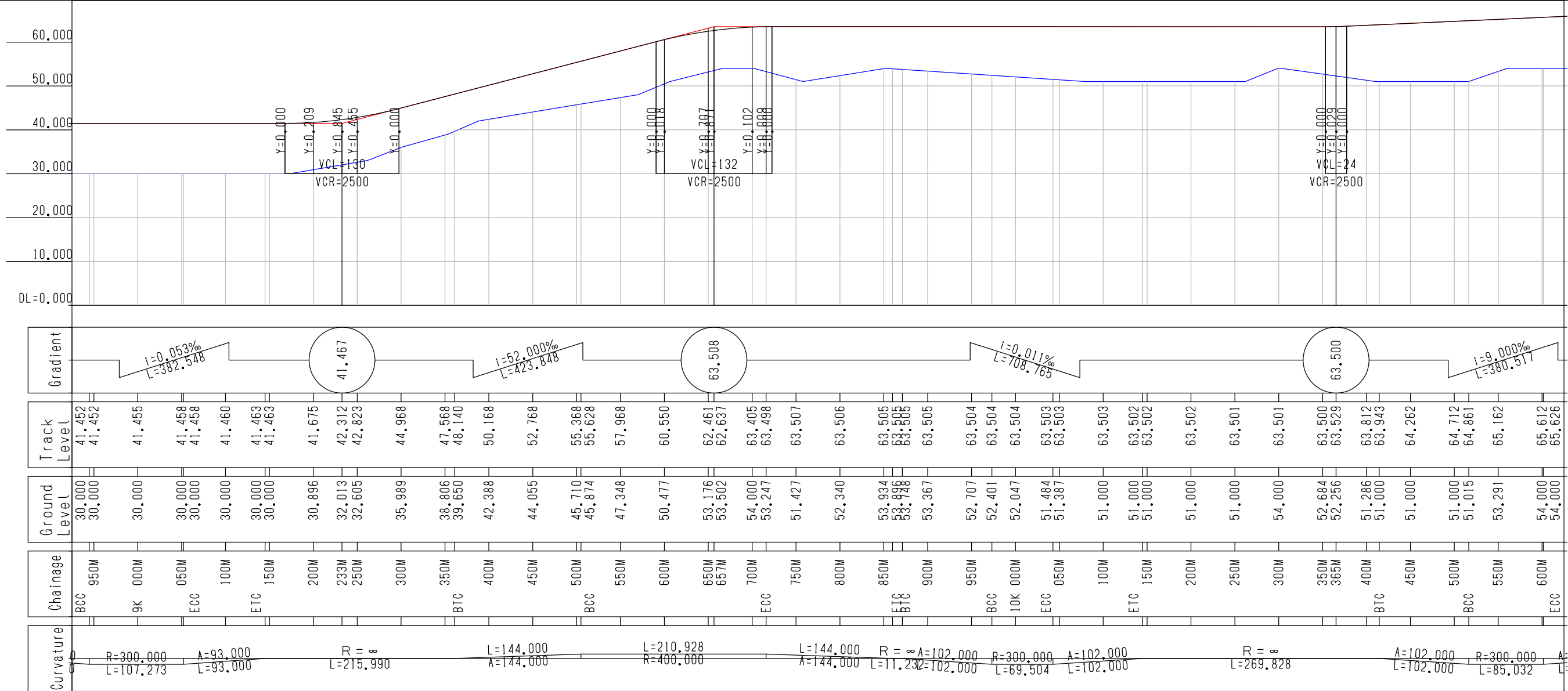
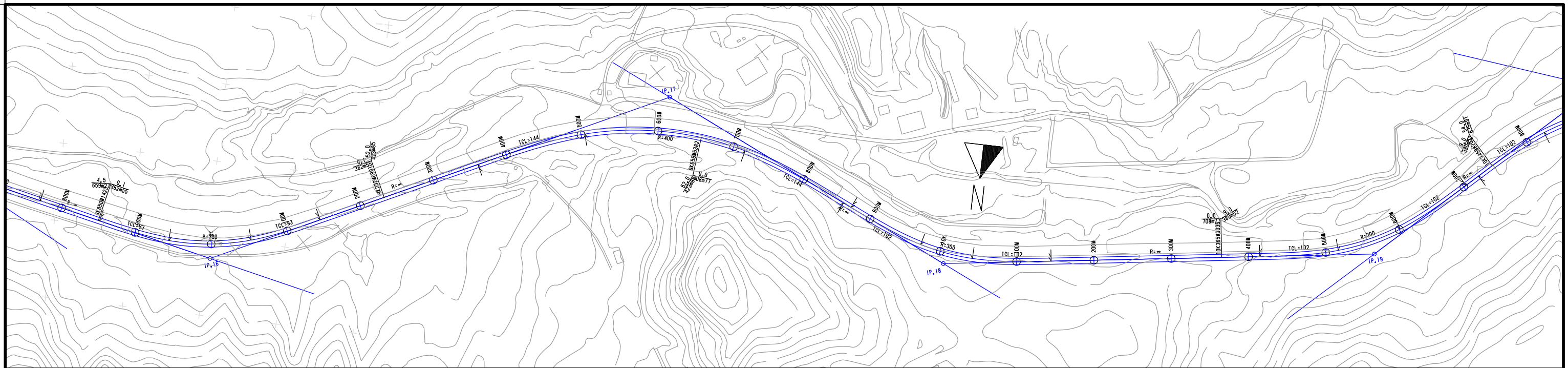
THE FEASIBILITY STUDY ON PANAMA CITY URBAN TRANSPORTATION LINE-3 PROJECT

DRAWN: _____ DATE: August 2014
 DESIGNED: _____ SCALE(A3): Plan 1:5,000
 Profile 1:5,000(X) and 1:1,000(Y)

RECEIVED BY: _____ SUBMITTED BY: _____
 TEAM LEADER/URBAN RAILWAY PLANNING CIVIL AND FACILITY PLANNING

CHECKED BY: _____ APPROVED BY: _____
 PAGE: 6

REMARKS:
 Alignment Plan(FR)
 (7K500M000 ~ 9K000M000)



SECRETARIA DEL METRO DE PANAMA



JAPAN INTERNATIONAL COOPERATION AGENCY

THE FEASIBILITY STUDY ON PANAMA CITY URBAN TRANSPORTATION LINE-3 PROJECT

DRAWN: _____
DESIGNED: _____

DATE: August 2014
SCALE(A3): Plan 1:5,000
Profile 1:5,000(X) and 1:1,000(Y)

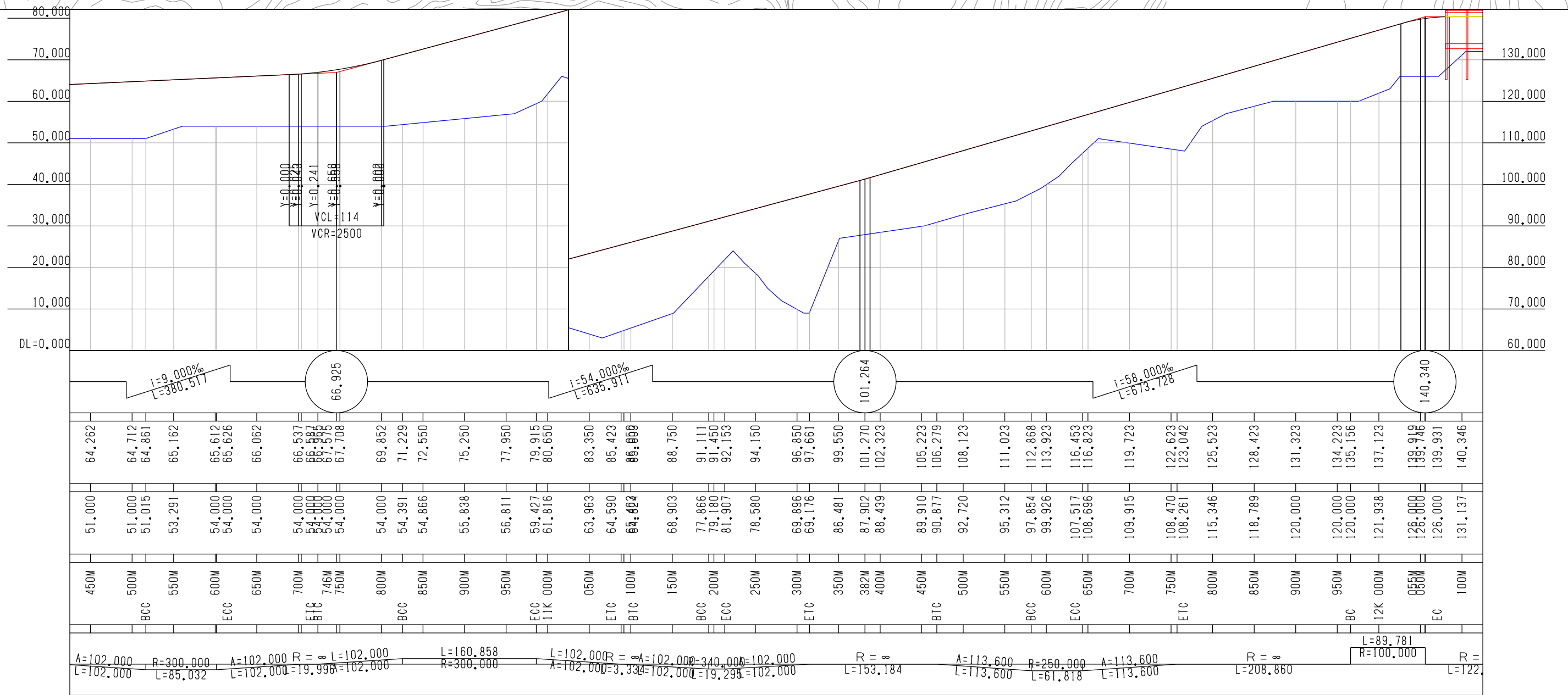
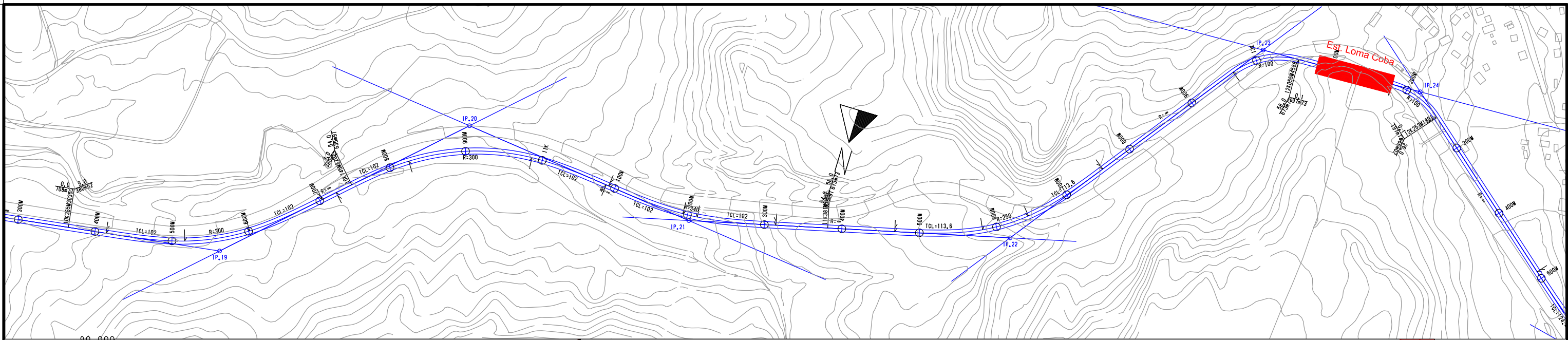
RECEIVED BY: _____
TEAM LEADER/URBAN RAILWAY PLANNING

SUBMITTED BY: _____
CIVIL AND FACILITY PLANNING

CHECKED BY: _____
APPROVED BY: _____

PAGE: 7
18

REMARKS:
Alignment Plan(FR)
(9K000M000 ~ 10K500M000)



SECRETARIA DEL METRO DE PANAMA



JAPAN INTERNATIONAL COOPERATION AGENCY

THE FEASIBILITY STUDY ON PANAMA CITY URBAN TRANSPORTATION LINE-3 PROJECT

DRAWN: _____
DESIGNED: _____

DATE: August 2014
SCALE(A3): Plan 1:5,000
Profile 1:5,000(X) and 1:1,000(Y)

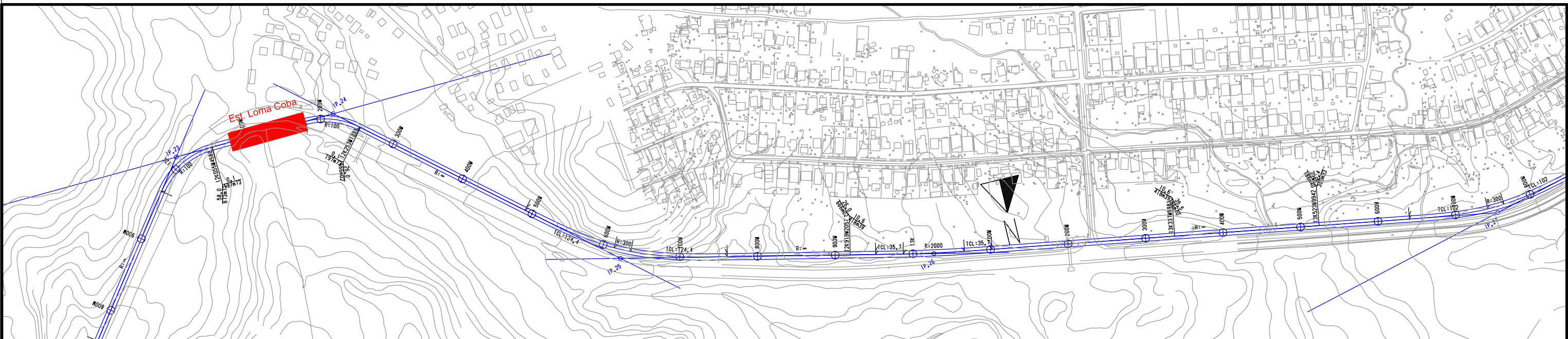
RECEIVED BY: _____
TEAM LEADER/URBAN RAILWAY PLANNING

SUBMITTED BY: _____
CIVIL AND FACILITY PLANNING

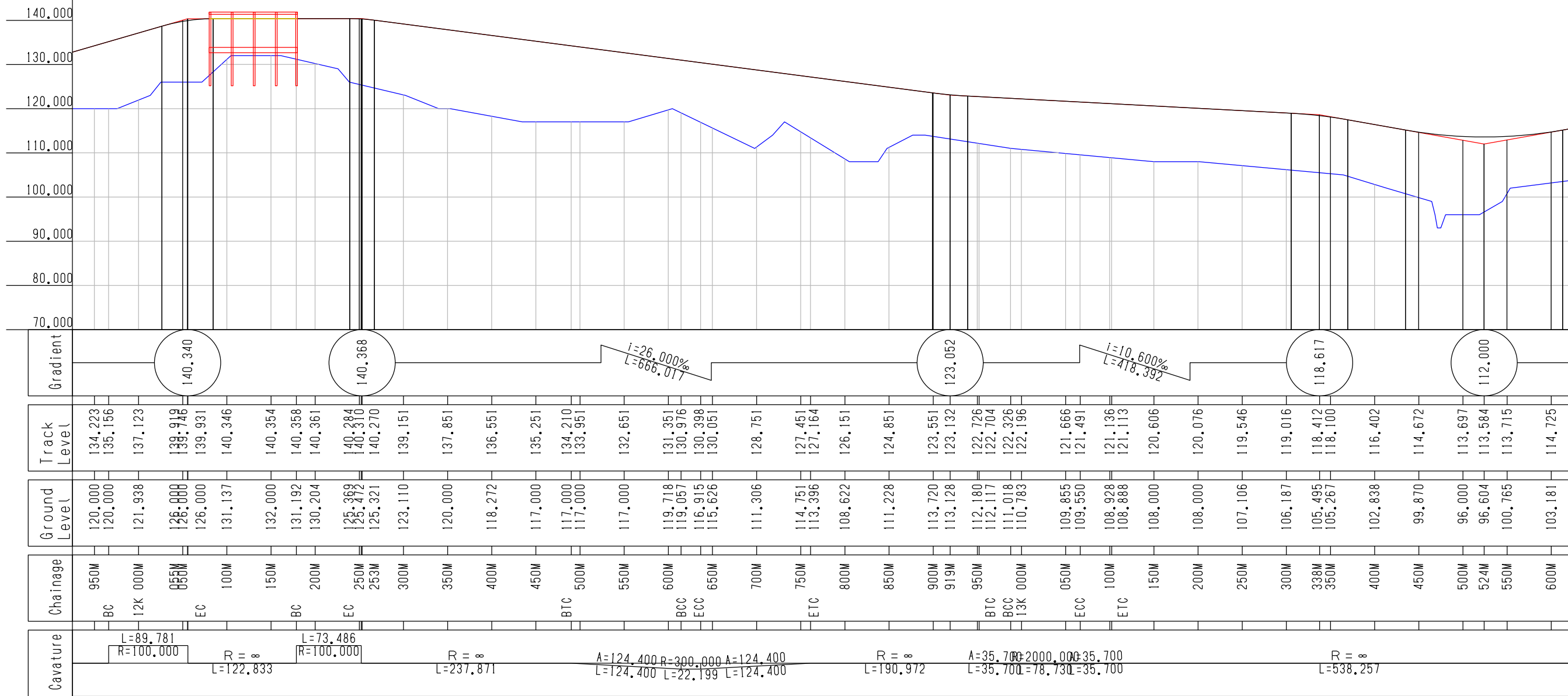
CHECKED BY: _____
APPROVED BY: _____

PAGE: 8

REMARKS:
Alignment Plan(FR)
(10K500M000 ~ 12K000M000)



Est. Loma Coba



SECRETARIA DEL METRO DE PANAMA



JAPAN INTERNATIONAL COOPERATION AGENCY

THE FEASIBILITY STUDY ON PANAMA CITY URBAN TRANSPORTATION LINE-3 PROJECT

DRAWN: _____
DESIGNED: _____

DATE: August 2014
SCALE(A3): Plan 1:5,000
Profile 1:5,000(X) and 1:1,000(Y)

RECEIVED BY: _____
TEAM LEADER/URBAN RAILWAY PLANNING

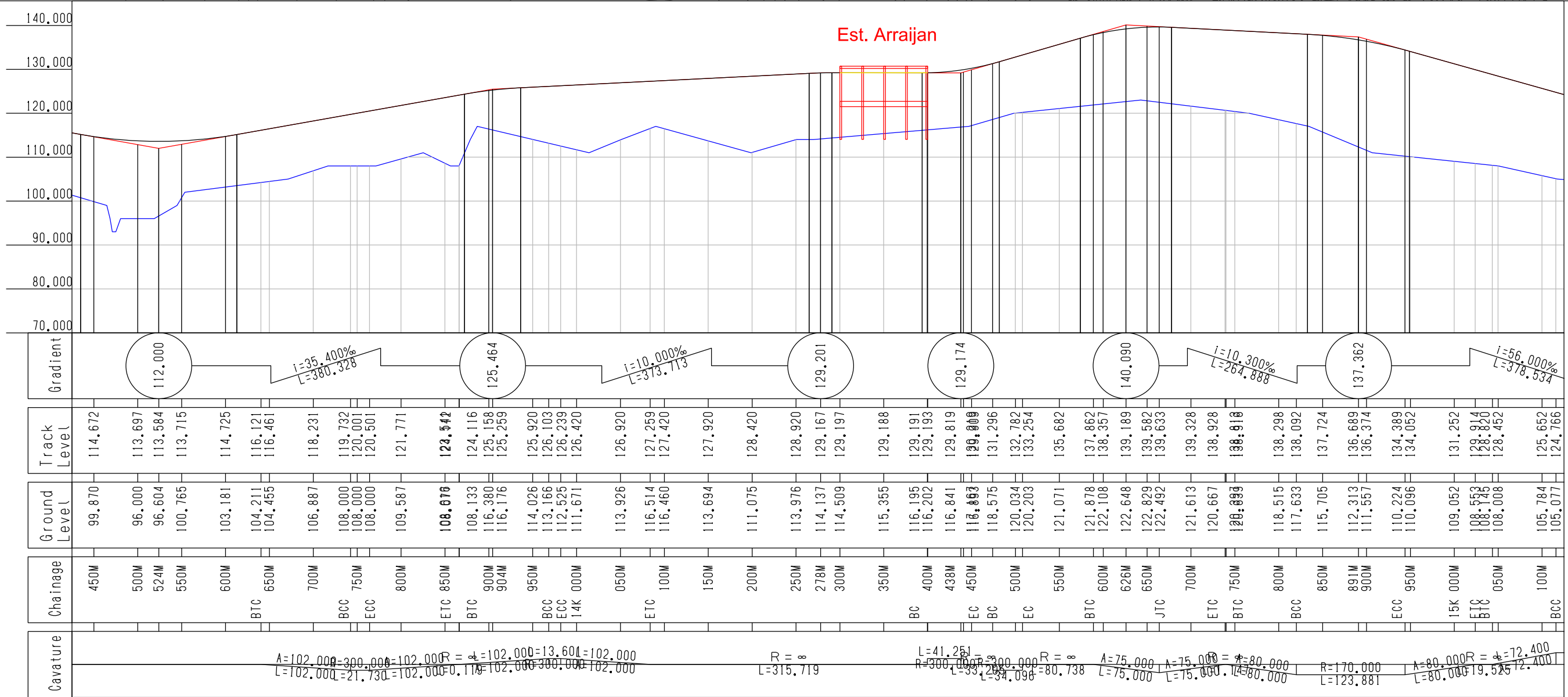
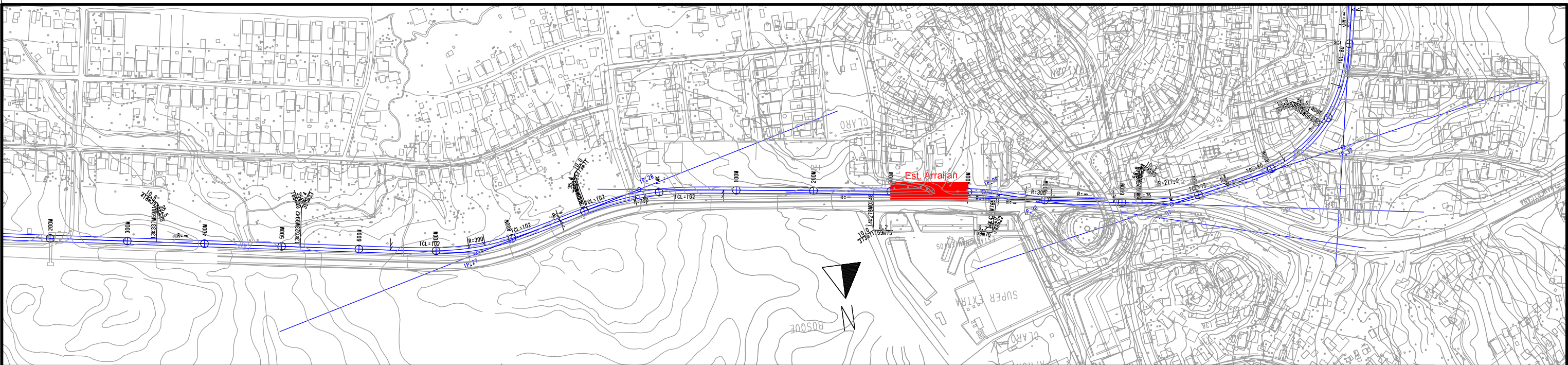
SUBMITTED BY: _____
CIVIL AND FACILITY PLANNING

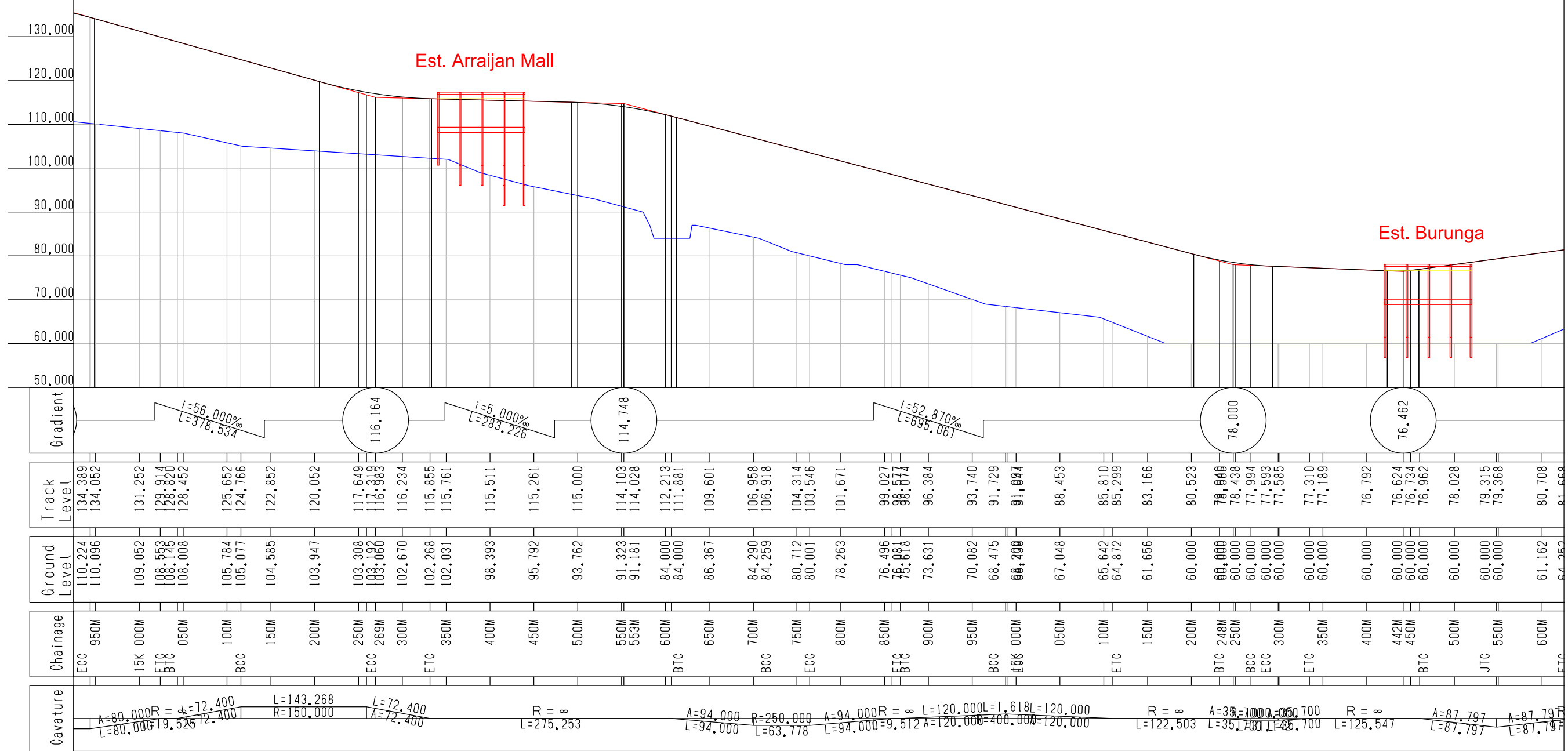
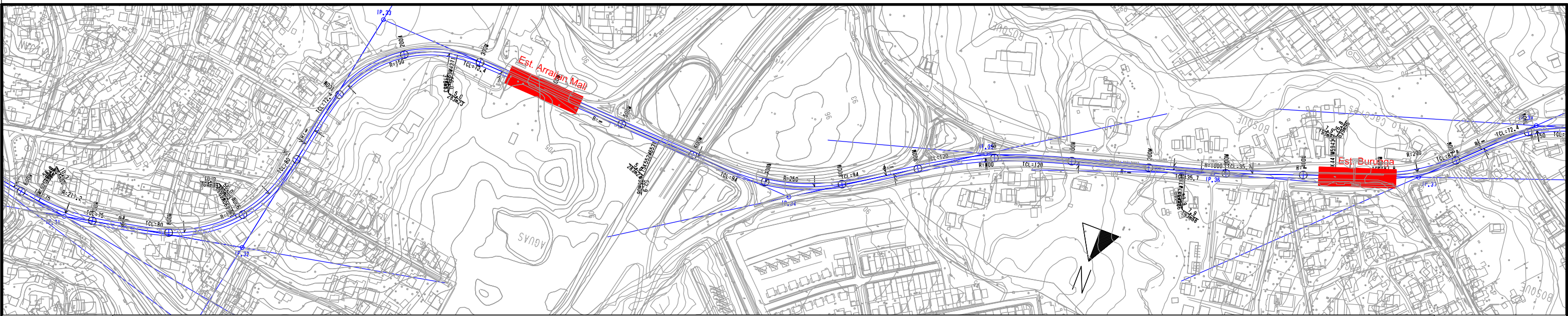
CHECKED BY: _____
APPROVED BY: _____

PAGE: 9
18

REMARKS:

Alignment Plan(FR)
(12K000M000 ~ 13K500M000)





SECRETARIA DEL METRO DE PANAMA



JAPAN INTERNATIONAL COOPERATION AGENCY

THE FEASIBILITY STUDY ON PANAMA CITY URBAN TRANSPORTATION LINE-3 PROJECT

DRAWN: _____
DESIGNED: _____

DATE: August 2014
SCALE(A3): Plan 1:5,000
Profile 1:5,000(X) and 1:1,000(Y)

RECEIVED BY: _____
TEAM LEADER/URBAN RAILWAY PLANNING

SUBMITTED BY: _____
CIVIL AND FACILITY PLANNING

CHECKED BY: _____
APPROVED BY: _____

PAGE: 11 / 18

REMARKS:

Alignment Plan(FR)
(15K000M000 ~ 16K500M000)