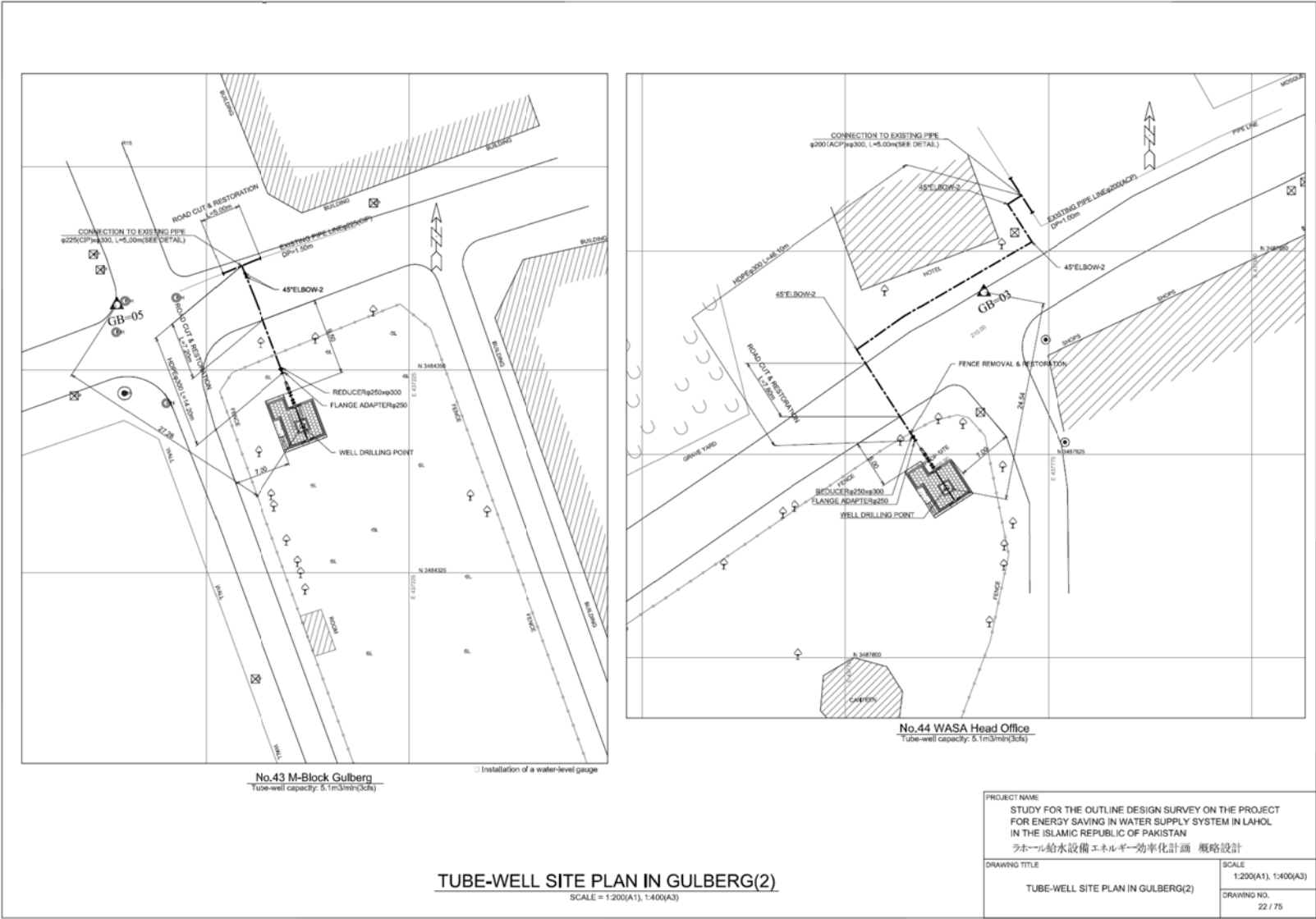
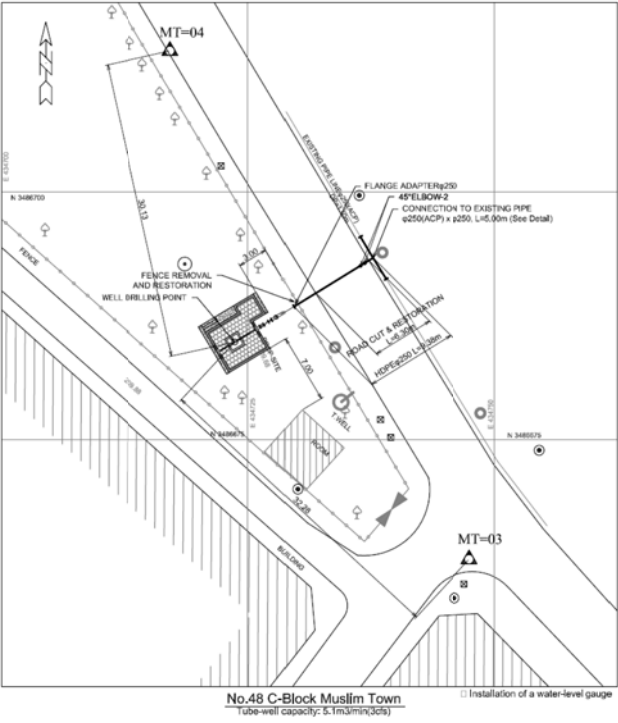
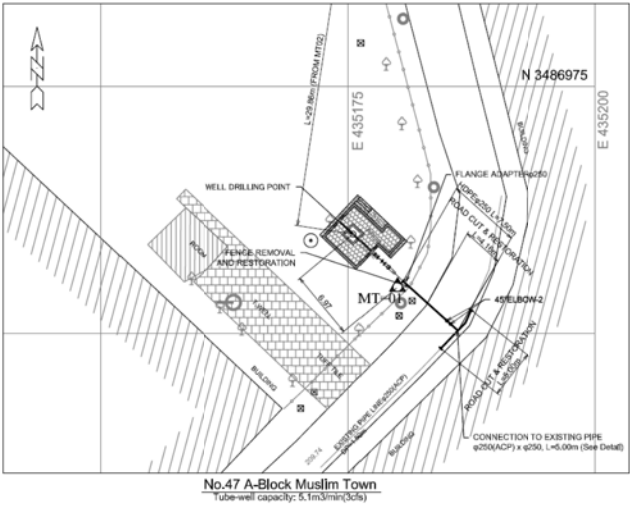


No.41 Henry Key(Old)
Tube-well capacity: 5.1m³/min(3d/s)

TUBE-WELL SITE PLAN IN GULBERG(1)
SCALE = 1:200(A1), 1:400(A3)

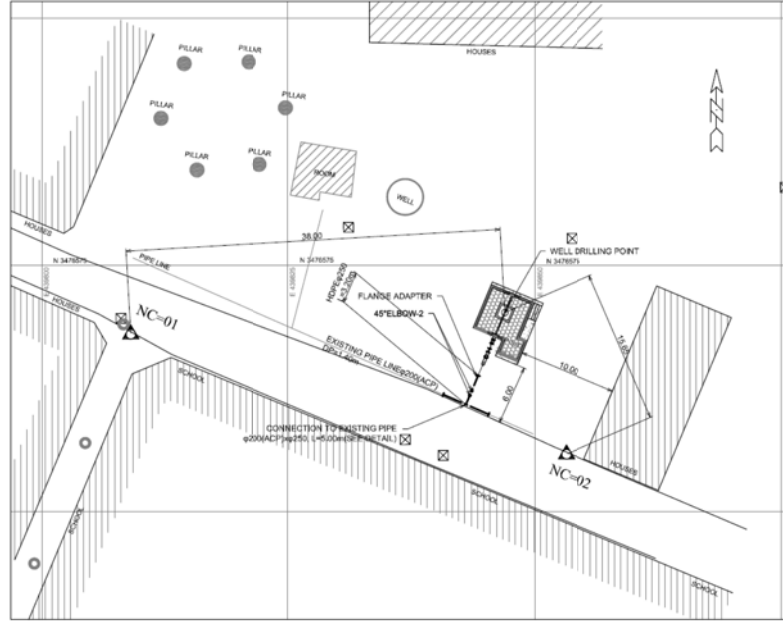
PROJECT NAME	
STUDY FOR THE OUTLINE DESIGN SURVEY ON THE PROJECT FOR ENERGY SAVING IN WATER SUPPLY SYSTEM IN LAHOL IN THE ISLAMIC REPUBLIC OF PAKISTAN	
ラホール給水設備エネルギー効率化計画 概略設計	
DRAWING TITLE	SCALE
TUBE-WELL SITE PLAN IN GULBERG(1)	1:200(A1), 1:400(A3)
DRAWING NO.	21 / 75



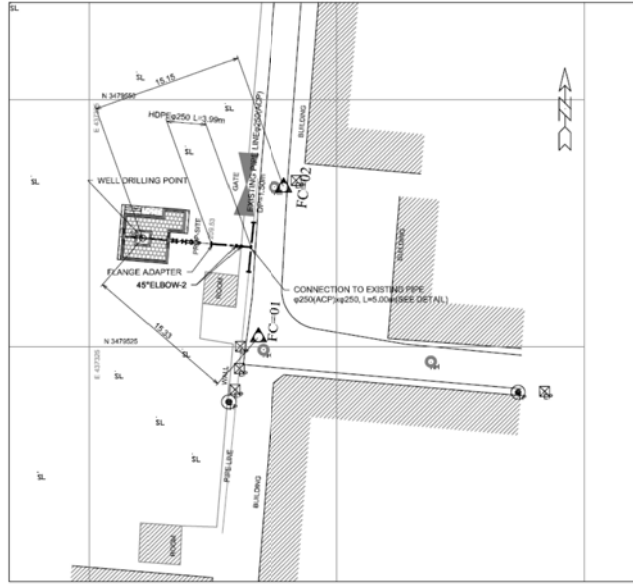


TUBE-WELL SITE PLAN IN ICCHRA
SCALE = 1:200(A1), 1:400(A3)

PROJECT NAME	
STUDY FOR THE OUTLINE DESIGN SURVEY ON THE PROJECT FOR ENERGY SAVING IN WATER SUPPLY SYSTEM IN LAHOL IN THE ISLAMIC REPUBLIC OF PAKISTAN ラホール給水設備エネルギー効率化計画 概略設計	
DRAWING TITLE	SCALE
TUBE-WELL SITE PLAN IN ICCHRA	1:200(A1), 1:400(A3)
	DRAWING NO.
	23 / 75



No.50 Nishtar Colony
Tube-well capacity: 5.1m³/min(30ℓ/s)

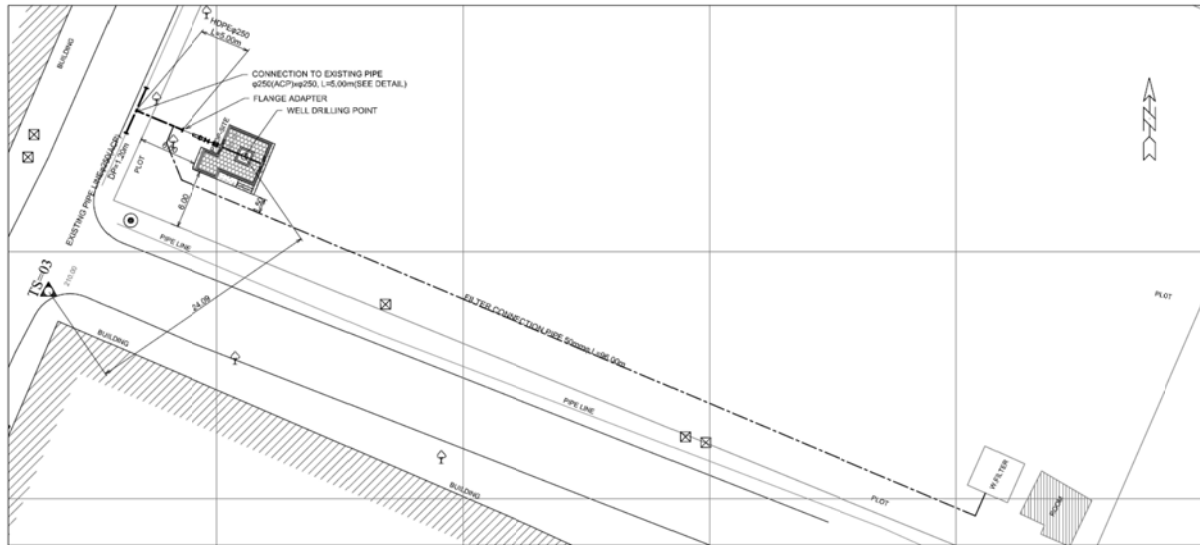


No.49 Fareed Colony Printing Press
Tube-well capacity: 5.1m³/min(30ℓ/s)

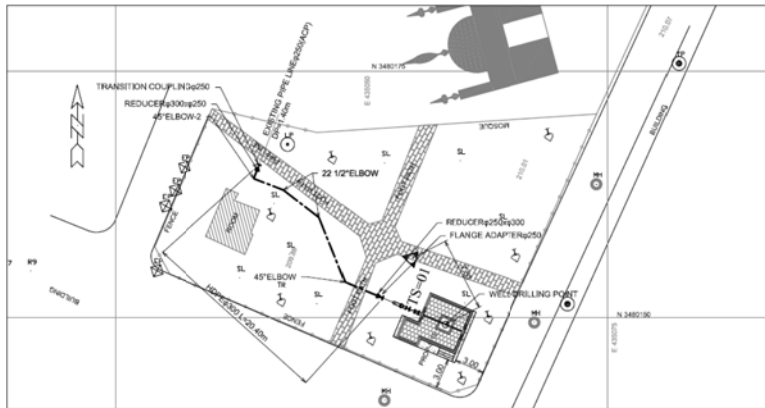
TUBE-WELL SITE PLAN IN INDUSTRIAL AREA(1)

SCALE = 1:200(A1), 1:400(A3)

PROJECT NAME	
STUDY FOR THE OUTLINE DESIGN SURVEY ON THE PROJECT FOR ENERGY SAVING IN WATER SUPPLY SYSTEM IN LAHOL IN THE ISLAMIC REPUBLIC OF PAKISTAN	
ラホール給水設備エネルギー効率化計画 概略設計	
DRAWING TITLE	SCALE
TUBE-WELL SITE PLAN IN INDUSTRIAL AREA(1)	1:200(A1), 1:400(A3)
DRAWING NO.	24 / 75



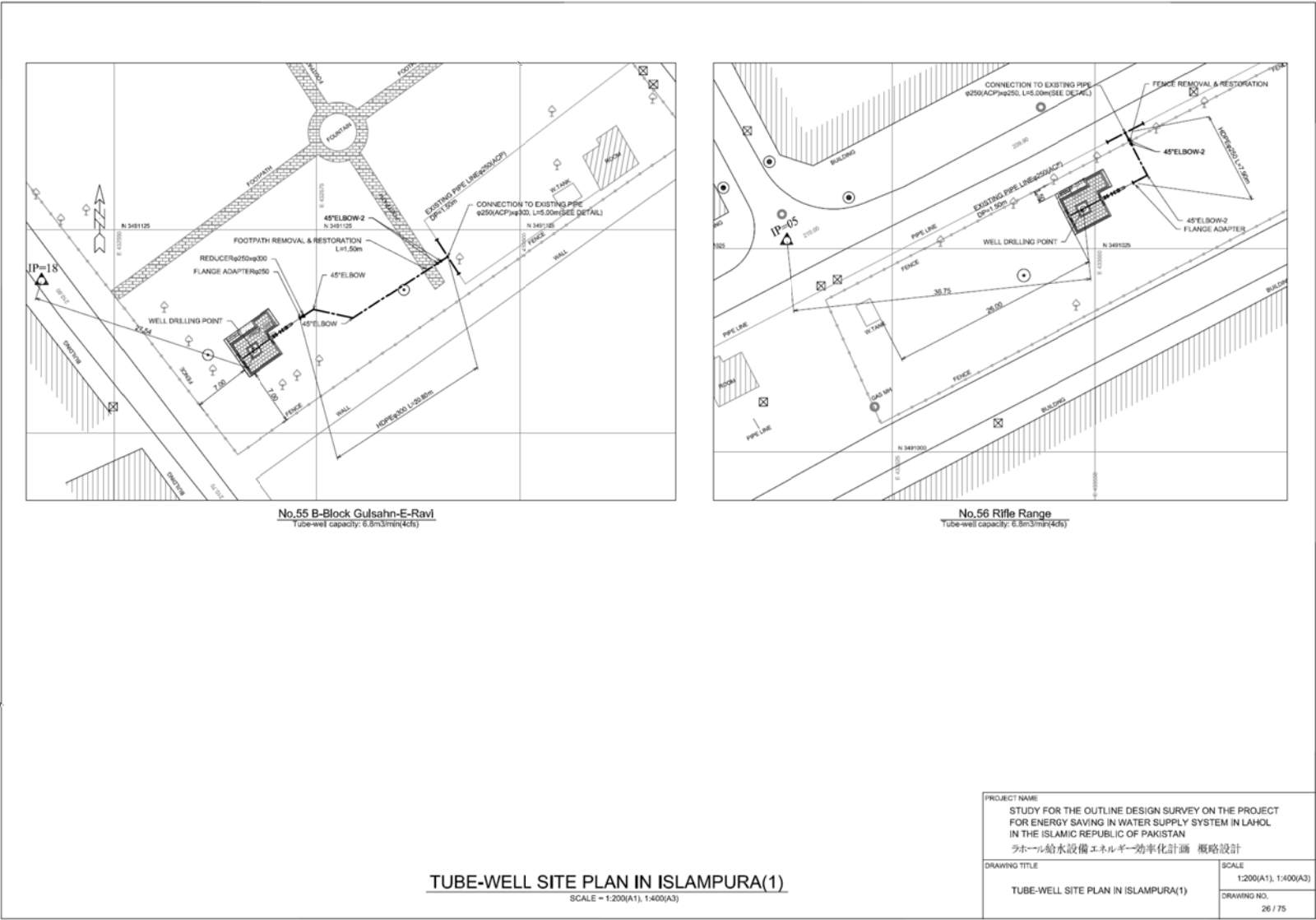
No.51 Block No.6 Sector-A-II Township
Tube-well capacity: 5.1m³/min(3cfs)

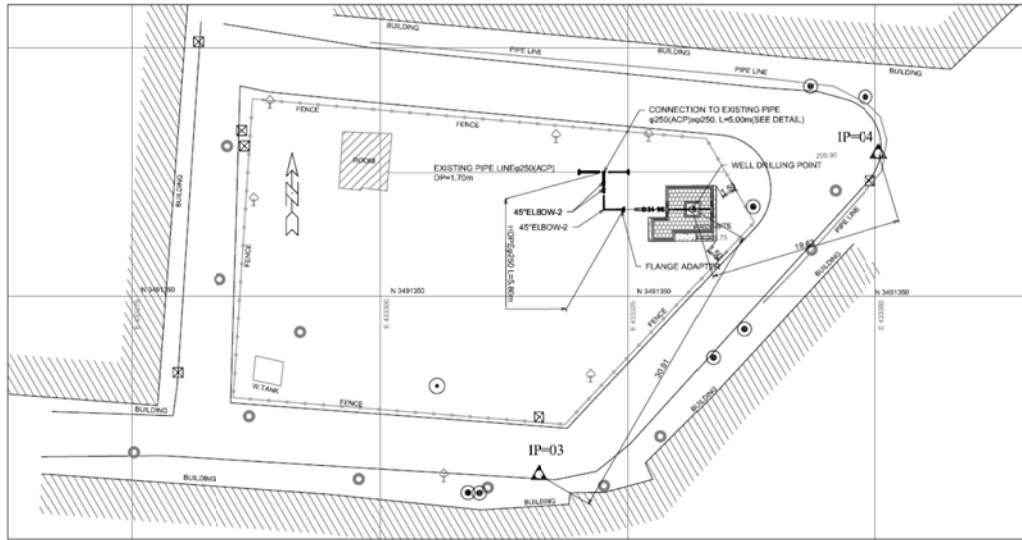


No.52 Block No.4 Sector-A-II Township
Tube-well capacity: 5.1m³/min(3cfs)

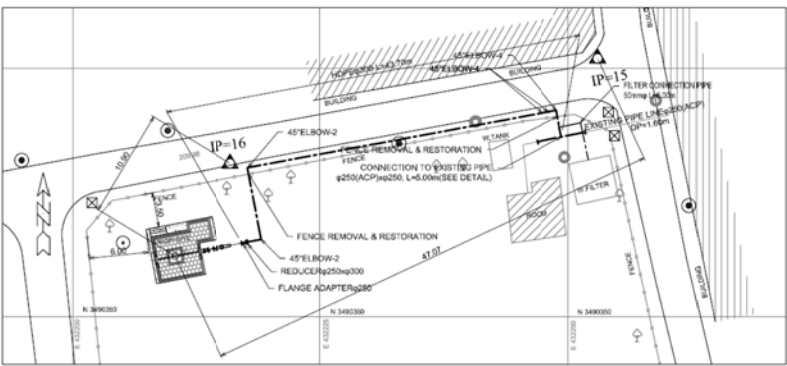
TUBE-WELL SITE PLAN IN INDUSTRIAL AREA(2)
SCALE = 1:200(A1), 1:400(A3)

PROJECT NAME	
STUDY FOR THE OUTLINE DESIGN SURVEY ON THE PROJECT FOR ENERGY SAVING IN WATER SUPPLY SYSTEM IN LAHOL IN THE ISLAMIC REPUBLIC OF PAKISTAN	
ラホール給水設備エネルギー効率化計画 概略設計	
DRAWING TITLE	SCALE
TUBE-WELL SITE PLAN IN INDUSTRIAL AREA(2)	1:200(A1), 1:400(A3)
	DRAWING NO.
	25 / 75





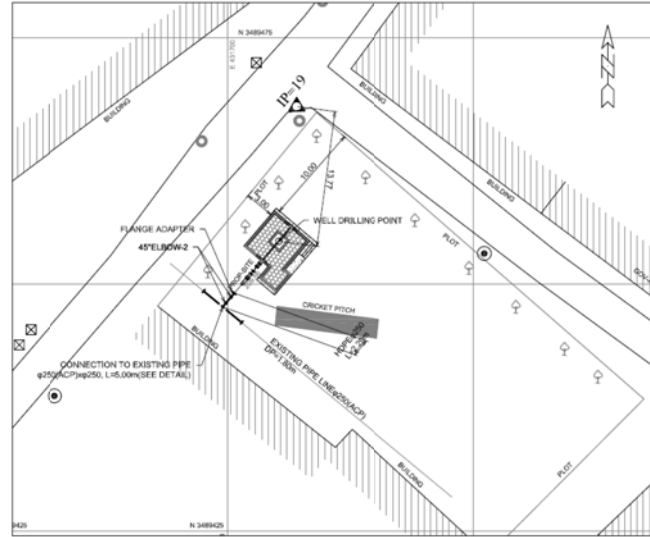
No.57 Bilal Park Shamnagar
Tube-well capacity: 6.8m³/min(4cfs)



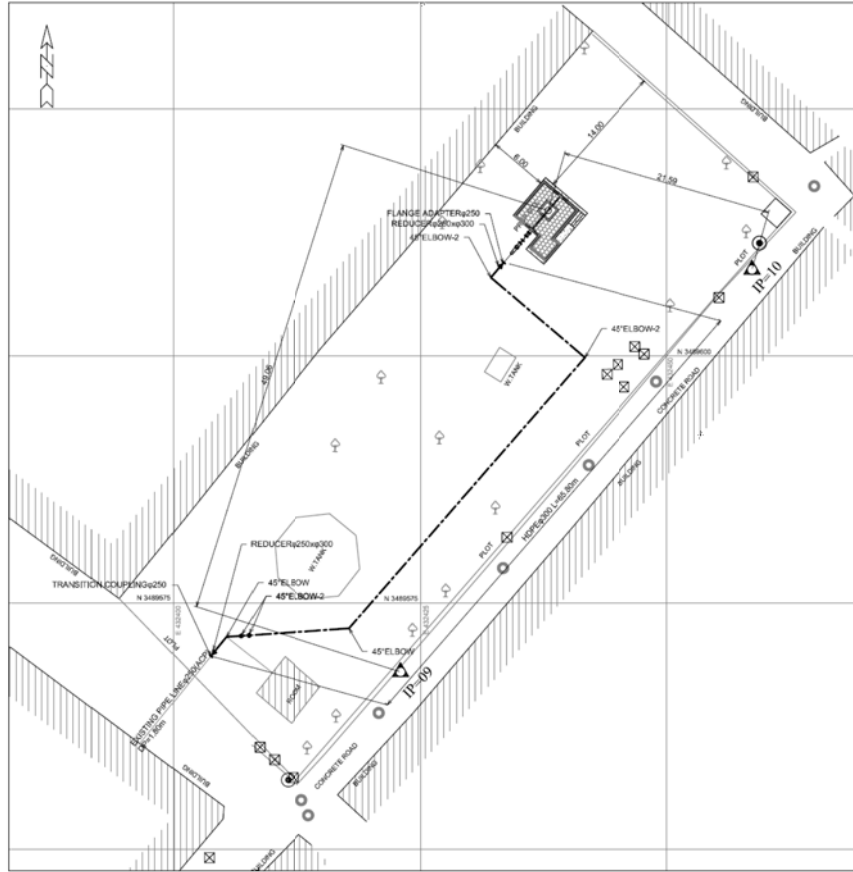
No.58 A-Block Gulsahn-E-Ravi
Tube-well capacity: 6.8m³/min(4cfs)

TUBE-WELL SITE PLAN IN ISLAMPURA(2)
SCALE = 1:200(A1), 1:400(A3)

PROJECT NAME	
STUDY FOR THE OUTLINE DESIGN SURVEY ON THE PROJECT FOR ENERGY SAVING IN WATER SUPPLY SYSTEM IN LAHOL IN THE ISLAMIC REPUBLIC OF PAKISTAN	
ラホール給水設備エネルギー効率化計画 概略設計	
DRAWING TITLE	SCALE
TUBE-WELL SITE PLAN IN ISLAMPURA(2)	1:200(A1), 1:400(A3)
DRAWING NO.	27 / 75



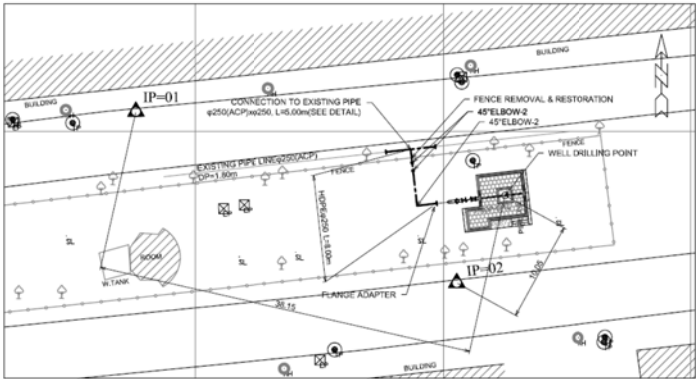
No.61 Jaffria Colony
Tube-well capacity: 6.8m³/min(4cfs)



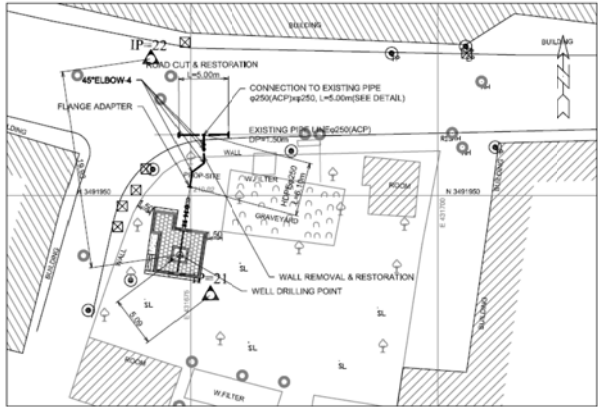
No.60 Sodilal Quarter
Tube-well capacity: 8.8m³/min(4cfs)

TUBE-WELL SITE PLAN IN ISLAMPURA(3)
SCALE = 1:200(A1), 1:400(A3)

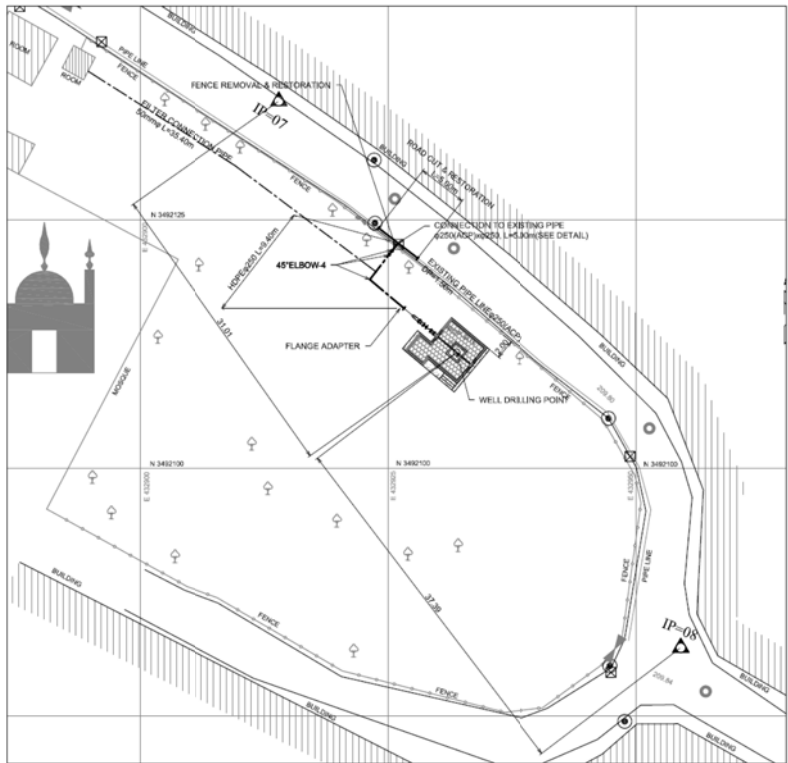
PROJECT NAME	
STUDY FOR THE OUTLINE DESIGN SURVEY ON THE PROJECT FOR ENERGY SAVING IN WATER SUPPLY SYSTEM IN LAHOL IN THE ISLAMIC REPUBLIC OF PAKISTAN	
ラホール給水設備エネルギー効率化計画 概略設計	
DRAWING TITLE	SCALE
TUBE-WELL SITE PLAN IN ISLAMPURA(3)	1:200(A1), 1:400(A3)
	DRAWING NO.
	28 / 75



No.62 Rewaz Garden
Tube-well capacity: 6.8m³/min(4cfs)



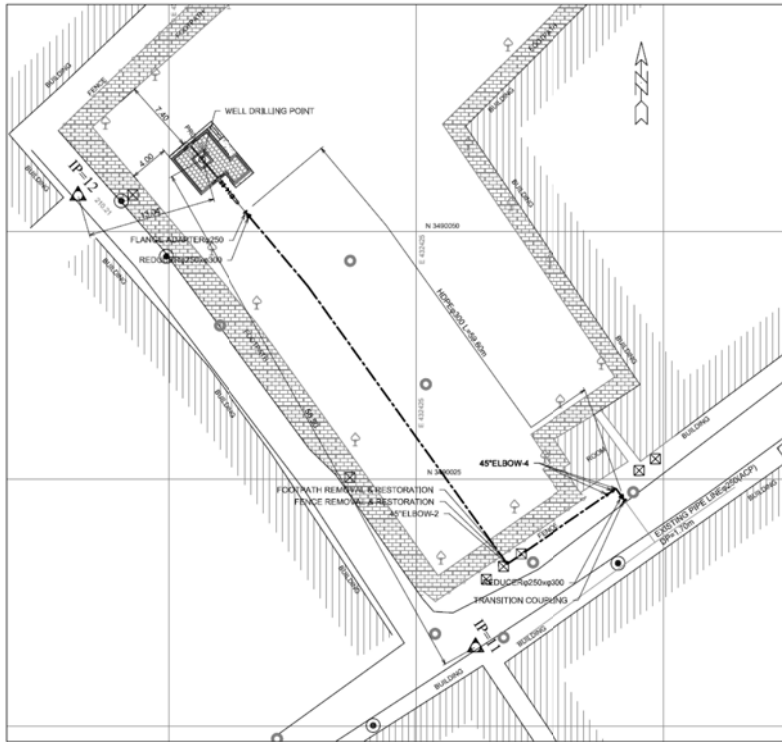
No.63 Sanda Patwar Khana
Tube-well capacity: 6.8m³/min(4cfs)



No.65 National Town Sandha
Tube-well capacity: 6.8m³/min(4cfs)

TUBE-WELL SITE PLAN IN ISLAMPURA(4)
SCALE = 1:200(A1), 1:400(A3)

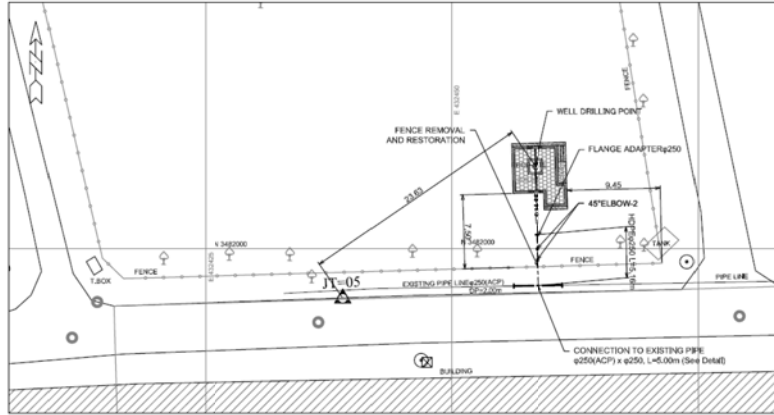
PROJECT NAME	
STUDY FOR THE OUTLINE DESIGN SURVEY ON THE PROJECT FOR ENERGY SAVING IN WATER SUPPLY SYSTEM IN LAHOL IN THE ISLAMIC REPUBLIC OF PAKISTAN ラホール給水設備エネルギー効率化計画 概略設計	
DRAWING TITLE	SCALE
TUBE-WELL SITE PLAN IN ISLAMPURA(4)	1:200(A1), 1:400(A3)
DRAWING NO.	29 / 75



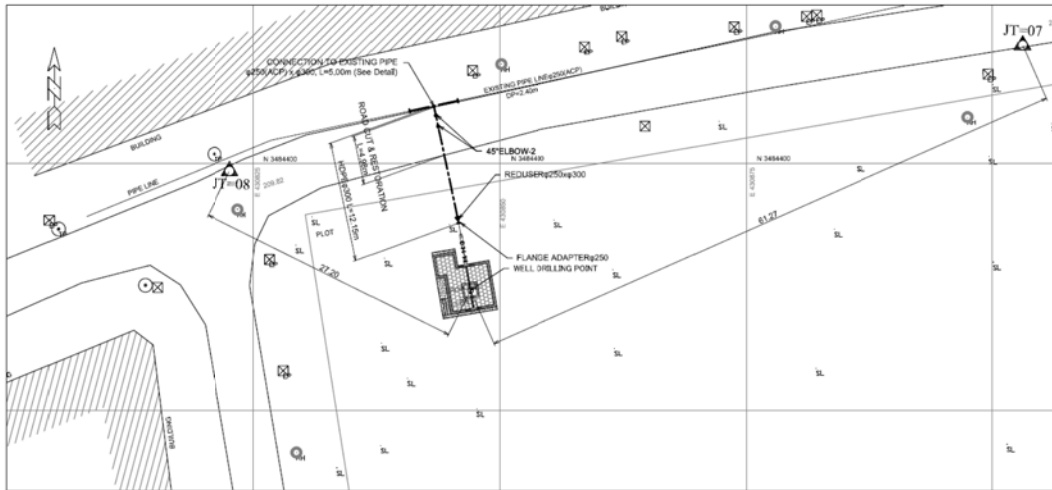
No.66 Rustam Park
Tube-well capacity: 6.6m³/min(4c/s)

TUBE-WELL SITE PLAN IN ISLAMPURA(5)
SCALE = 1:200(A1), 1:400(A3)

PROJECT NAME	
STUDY FOR THE OUTLINE DESIGN SURVEY ON THE PROJECT FOR ENERGY SAVING IN WATER SUPPLY SYSTEM IN LAHOL IN THE ISLAMIC REPUBLIC OF PAKISTAN	
ラホール給水設備エネルギー効率化計画 概略設計	
DRAWING TITLE	SCALE
TUBE-WELL SITE PLAN IN ISLAMPURA(5)	1:200(A1), 1:400(A3)
	DRAWING NO.
	30 / 75



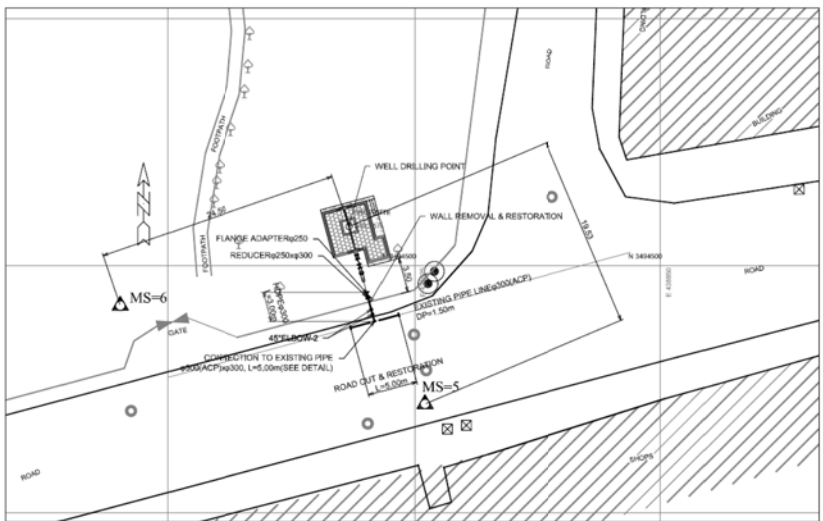
No.67 E-1 Johar Town
Tube-well capacity: 5.1m³/min(3cfs)



No.70 Mustafa Town
Tube-well capacity: 5.1m³/min(3cfs)

TUBE-WELL SITE PLAN IN JOHAR TOWN
SCALE = 1:200(A1), 1:400(A3)

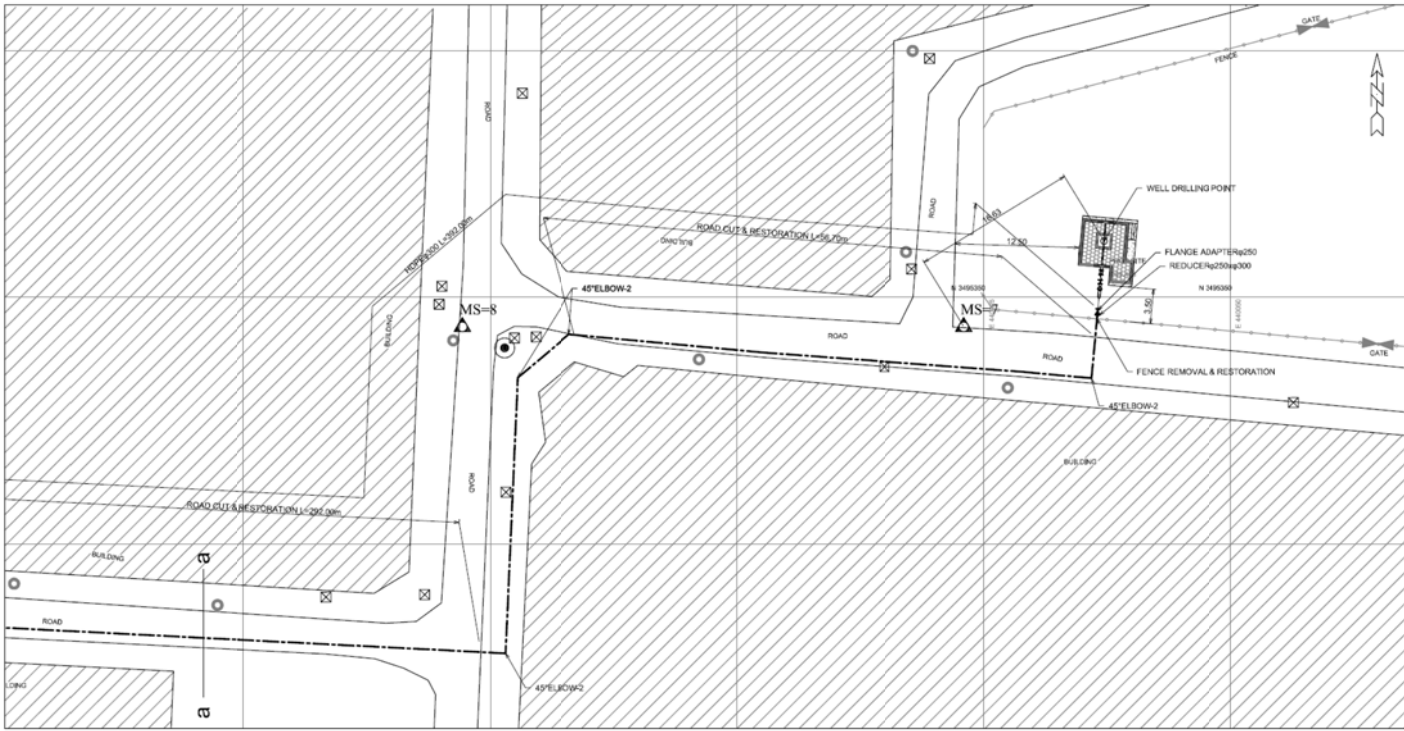
PROJECT NAME	
STUDY FOR THE OUTLINE DESIGN SURVEY ON THE PROJECT FOR ENERGY SAVING IN WATER SUPPLY SYSTEM IN LAHOL IN THE ISLAMIC REPUBLIC OF PAKISTAN ラホール給水設備エネルギー効率化計画 概略設計	
DRAWING TITLE	SCALE
TUBE-WELL SITE PLAN IN JOHAR TOWN	1:200(A1), 1:400(A3)
	DRAWING NO.
	31 / 75



No.71 Kanji House Misri Shah
Tube-well capacity: 5.1m³/min(1cls)

TUBE-WELL SITE PLAN IN MISRI SHAH(1)
SCALE = 1:200(A1), 1:400(A3)

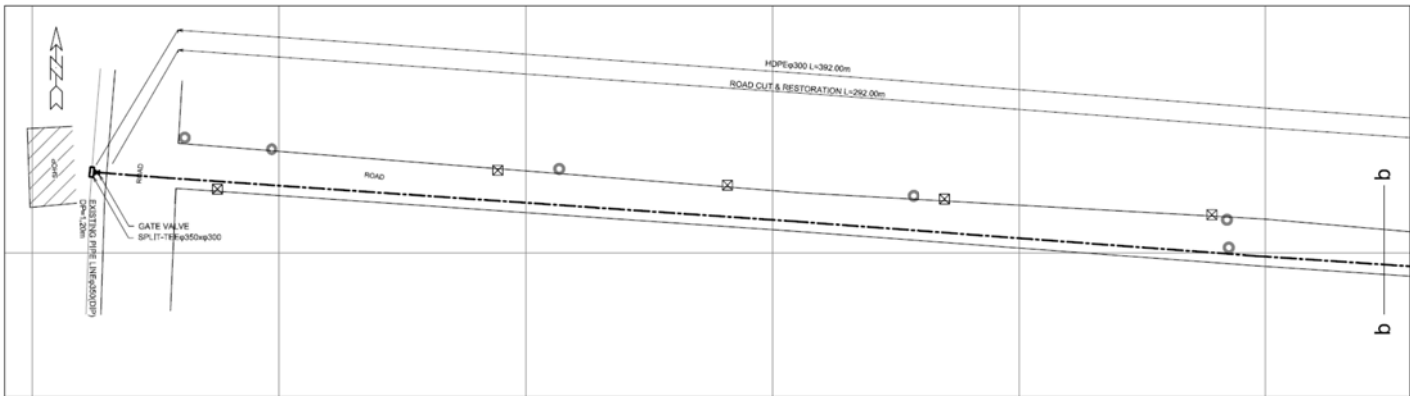
PROJECT NAME	
STUDY FOR THE OUTLINE DESIGN SURVEY ON THE PROJECT FOR ENERGY SAVING IN WATER SUPPLY SYSTEM IN LAHOL IN THE ISLAMIC REPUBLIC OF PAKISTAN ラホール給水設備エネルギー効率化計画 概略設計	
DRAWING TITLE	SCALE 1:200(A1), 1:400(A3)
TUBE-WELL SITE PLAN IN MISRI SHAH(1)	DRAWING NO. 32 / 75



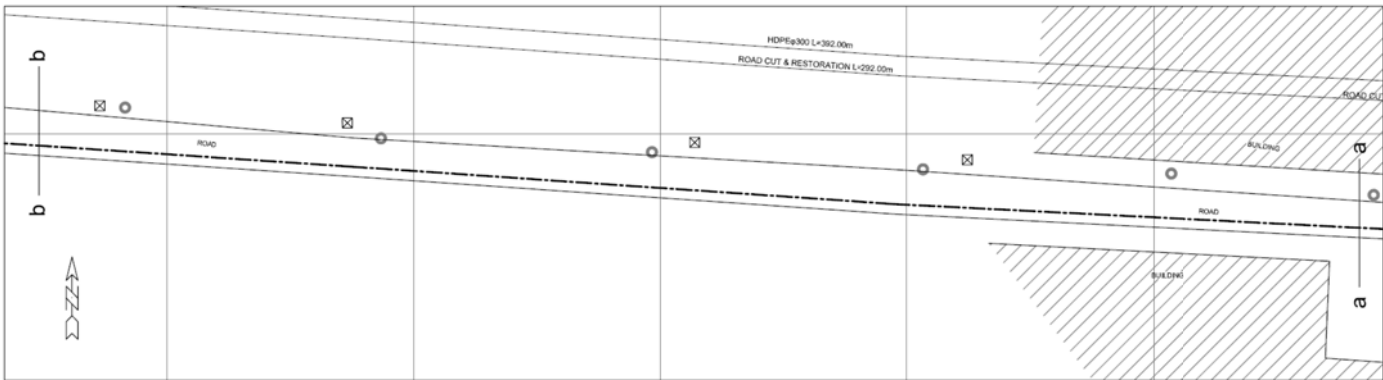
No.72 D-Block China Scheme(1)
Tube-well capacity: 6.8m³/min(4cfs)

TUBE-WELL SITE PLAN IN MISRI SHAH(2)-1
SCALE = 1:200(A1), 1:400(A3)

PROJECT NAME STUDY FOR THE OUTLINE DESIGN SURVEY ON THE PROJECT FOR ENERGY SAVING IN WATER SUPPLY SYSTEM IN LAHOL IN THE ISLAMIC REPUBLIC OF PAKISTAN ラホール給水設備エネルギー効率化計画 概略設計	
DRAWING TITLE TUBE-WELL SITE PLAN IN MISRI SHAH(2)-1	SCALE 1:200(A1), 1:400(A3) DRAWING NO. 33 / 75



No.72 D-Block China Scheme(3)
Tube-well capacity: 5.1m³/min(3d/s)



No.72 D-Block China Scheme(2)
Tube-well capacity: 8.8m³/min(4d/s)

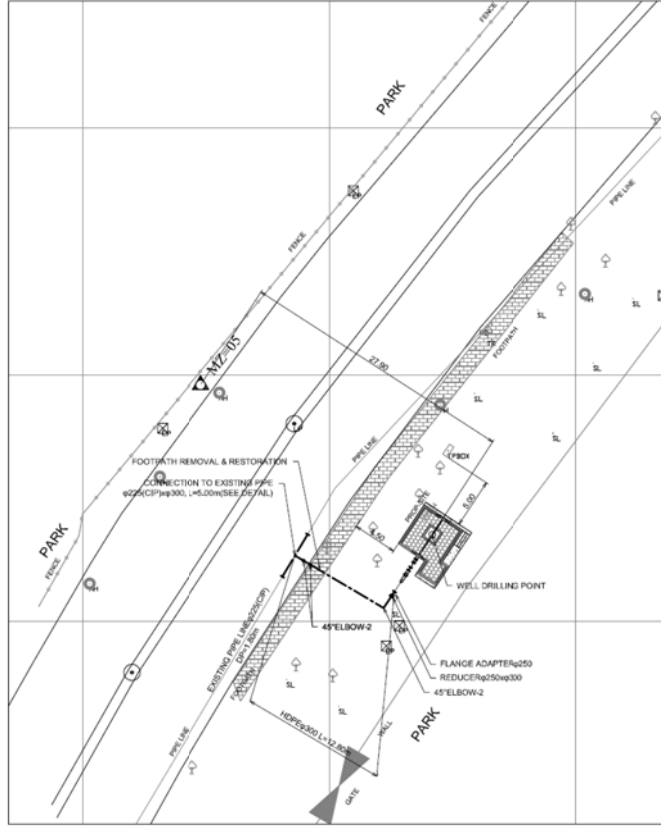
TUBE-WELL SITE PLAN IN MISRI SHAH(2)-2

SCALE = 1:200(A1), 1:400(A3)

PROJECT NAME
STUDY FOR THE OUTLINE DESIGN SURVEY ON THE PROJECT
FOR ENERGY SAVING IN WATER SUPPLY SYSTEM IN LAHOL
IN THE ISLAMIC REPUBLIC OF PAKISTAN
ラホール給水設備エネルギー効率化計画 概略設計

DRAWING TITLE
TUBE-WELL SITE PLAN IN MISRI SHAH(2)-2

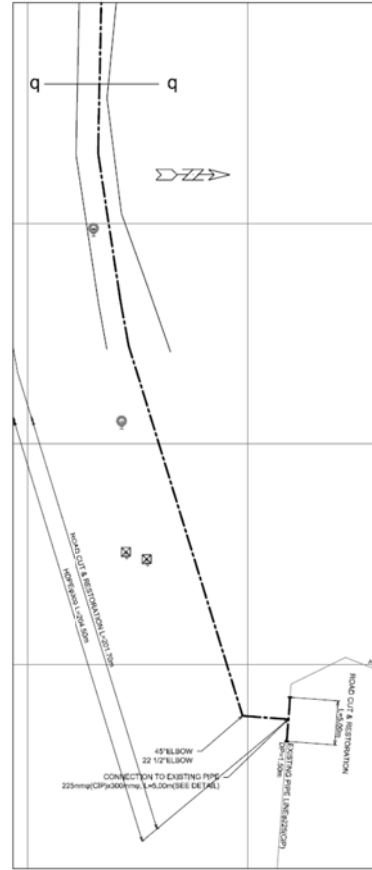
SCALE
1:200(A1), 1:400(A3)
DRAWING NO.
34 / 75



No.78 Shah Sahamas Qari
Tube-well capacity: 5.1m³/min(3cfs)

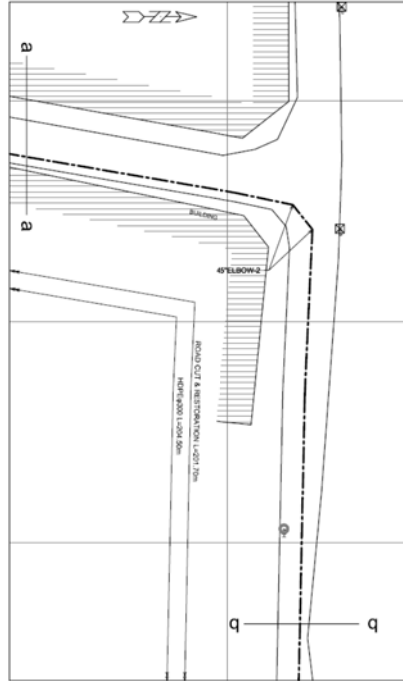
TUBE-WELL SITE PLAN IN MOZANG(2)
SCALE = 1:200(A1), 1:400(A3)

PROJECT NAME	
STUDY FOR THE OUTLINE DESIGN SURVEY ON THE PROJECT FOR ENERGY SAVING IN WATER SUPPLY SYSTEM IN LAHOL IN THE ISLAMIC REPUBLIC OF PAKISTAN ラホール給水設備エネルギー効率化計画 概略設計	
DRAWING TITLE	SCALE
TUBE-WELL SITE PLAN IN MOZANG(2)	1:200(A1), 1:400(A3)
	DRAWING NO.
	36 / 75

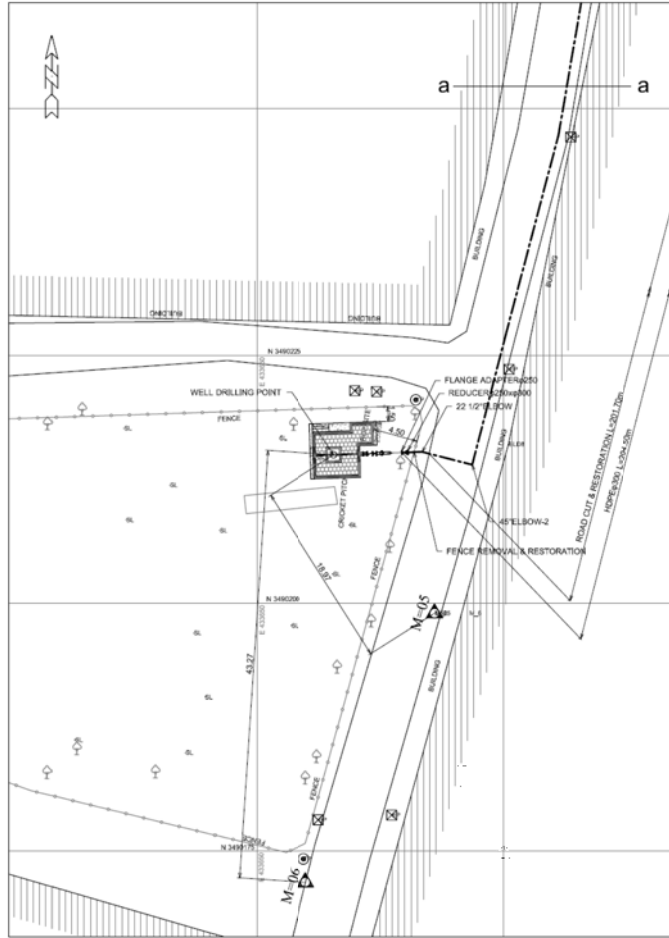


No.79 Faseeh Road(3)
Tube-well capacity: 5.1m³/min(3dls)

PROJECT NAME	
STUDY FOR THE OUTLINE DESIGN SURVEY ON THE PROJECT FOR ENERGY SAVING IN WATER SUPPLY SYSTEM IN LAHOL IN THE ISLAMIC REPUBLIC OF PAKISTAN	
ラホール給水設備エネルギー効率化計画 概略設計	
DRAWING TITLE	SCALE
TUBE-WELL SITE PLAN IN MOZANG(3)	1:200(A1), 1:400(A3)
	DRAWING NO.
	37 / 75

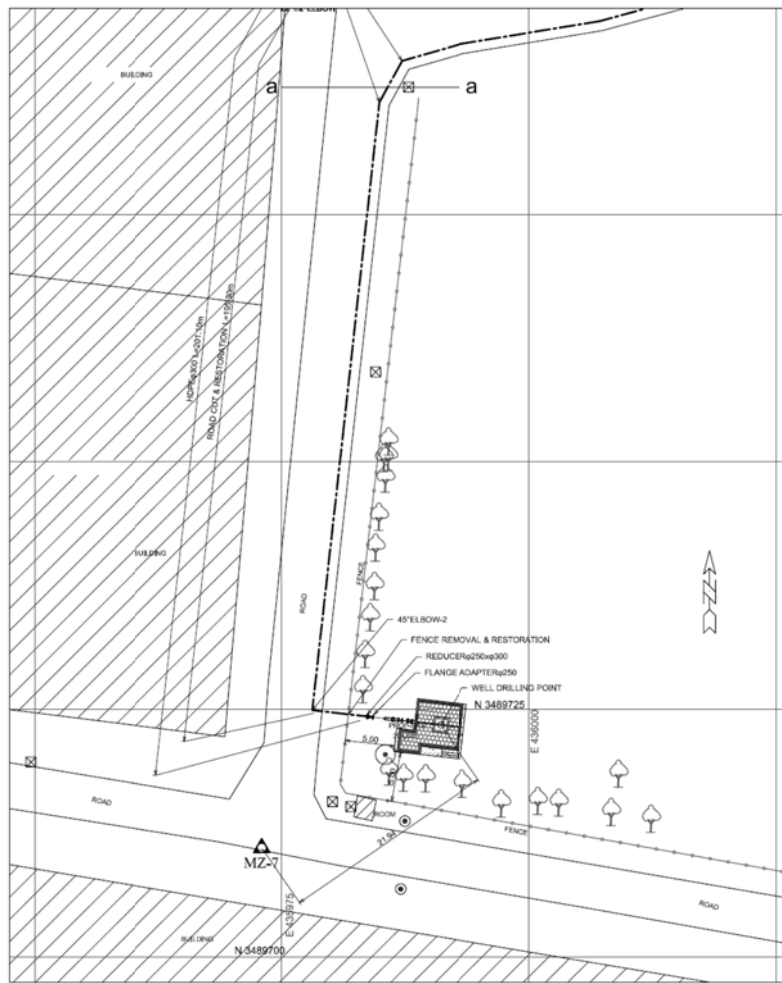


No.79 Faseeh Road(2)
Tube-well capacity: 5.1m³/min(3dls)



No.79 Faseeh Road(1)
Tube-well capacity: 5.1m³/min(3dls)

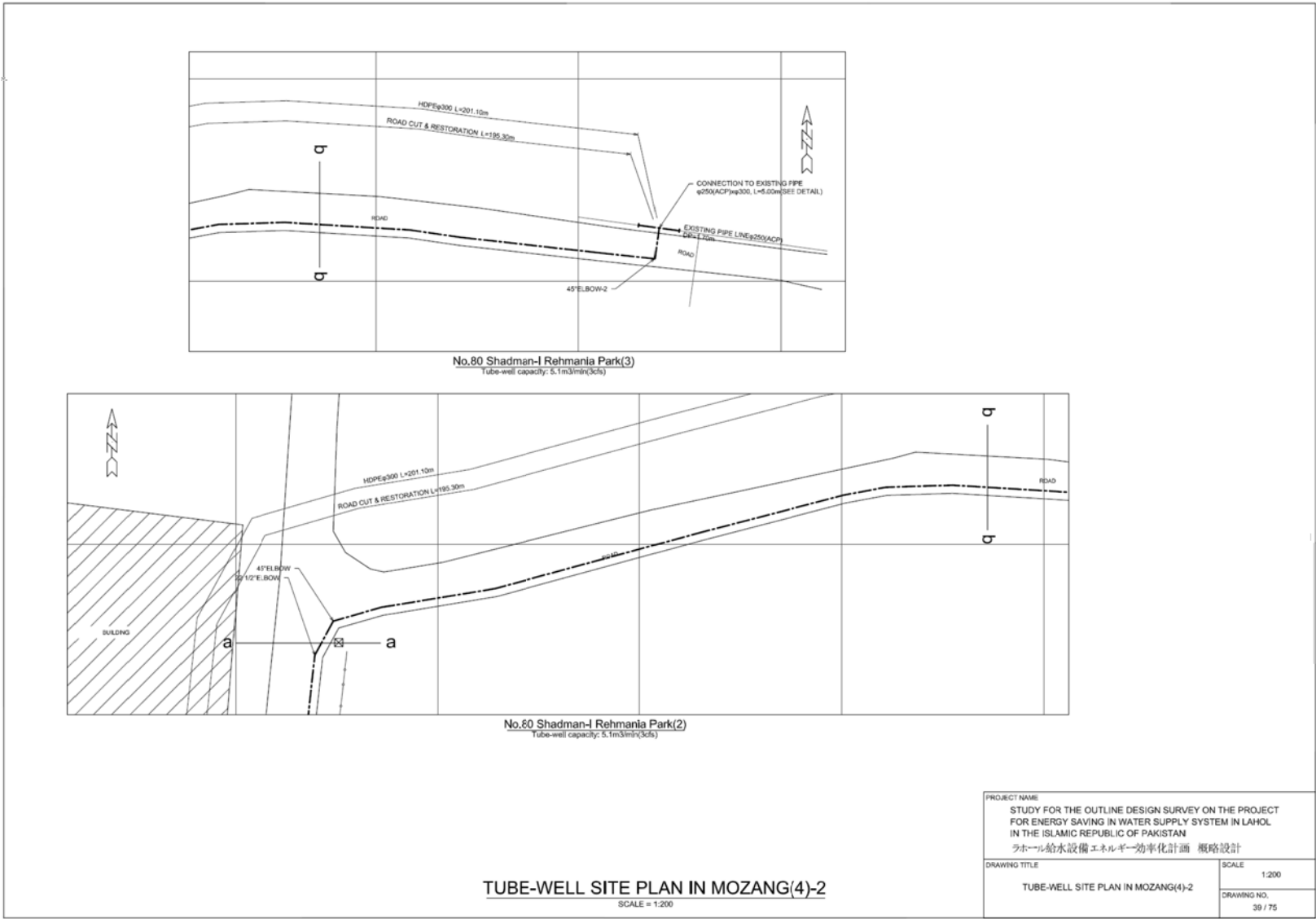
TUBE-WELL SITE PLAN IN MOZANG(3)
SCALE = 1:200(A1), 1:400(A3)

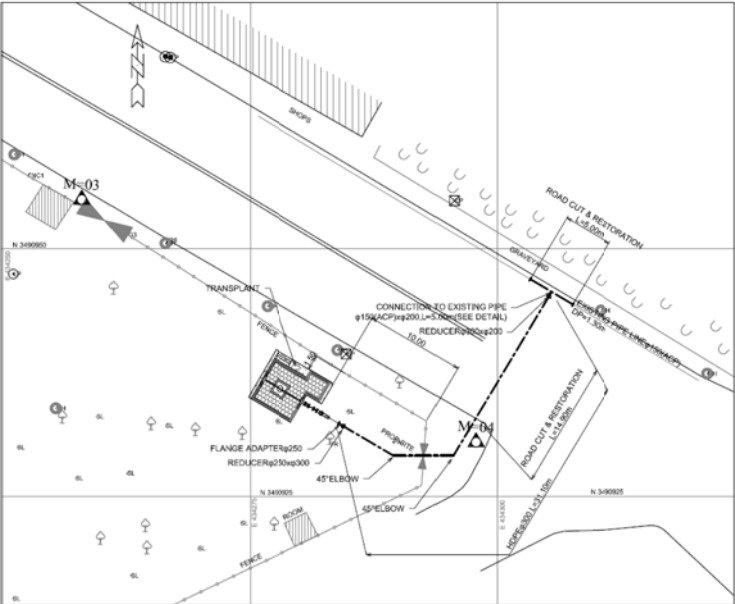


No.80 Shadman-I Rehmanla Park(1)
Tube-well capacity: 5.1m³/min(c/s)

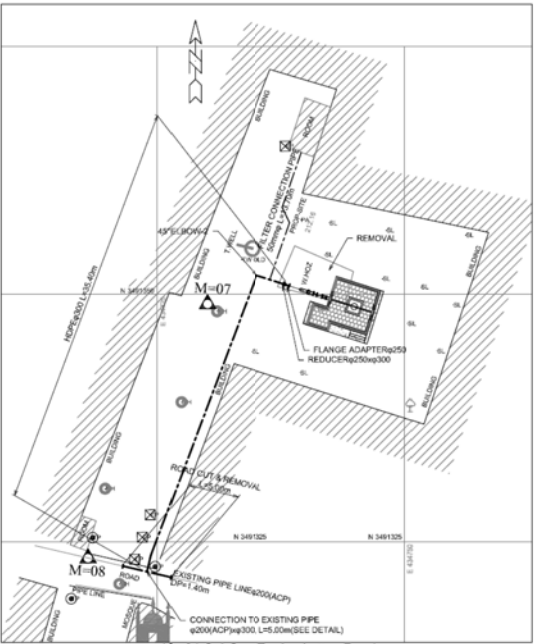
TUBE-WELL SITE PLAN IN MOZANG(4)-1
SCALE = 1:200

PROJECT NAME	
STUDY FOR THE OUTLINE DESIGN SURVEY ON THE PROJECT FOR ENERGY SAVING IN WATER SUPPLY SYSTEM IN LAHOL IN THE ISLAMIC REPUBLIC OF PAKISTAN ラホール給水設備エネルギー効率化計画 概略設計	
DRAWING TITLE	SCALE 1:200
TUBE-WELL SITE PLAN IN MOZANG(4)-1	DRAWING NO. 38 / 75

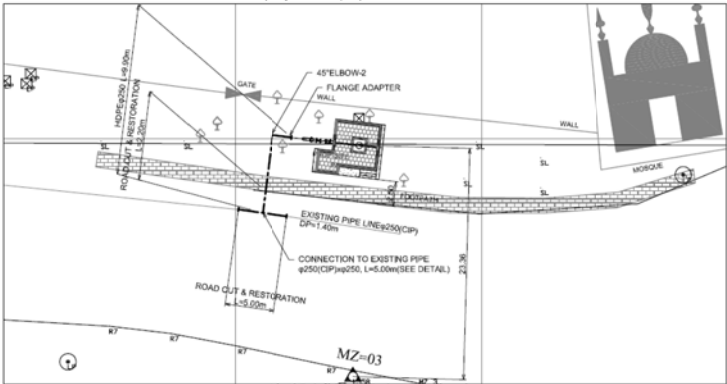




No.84 Sadi Park
Tube-well capacity: 5.1m³/min(3cfs)



No.81 Sul Gas Engine Lytton Road
Tube-well capacity: 5.1m³/min(3cfs)

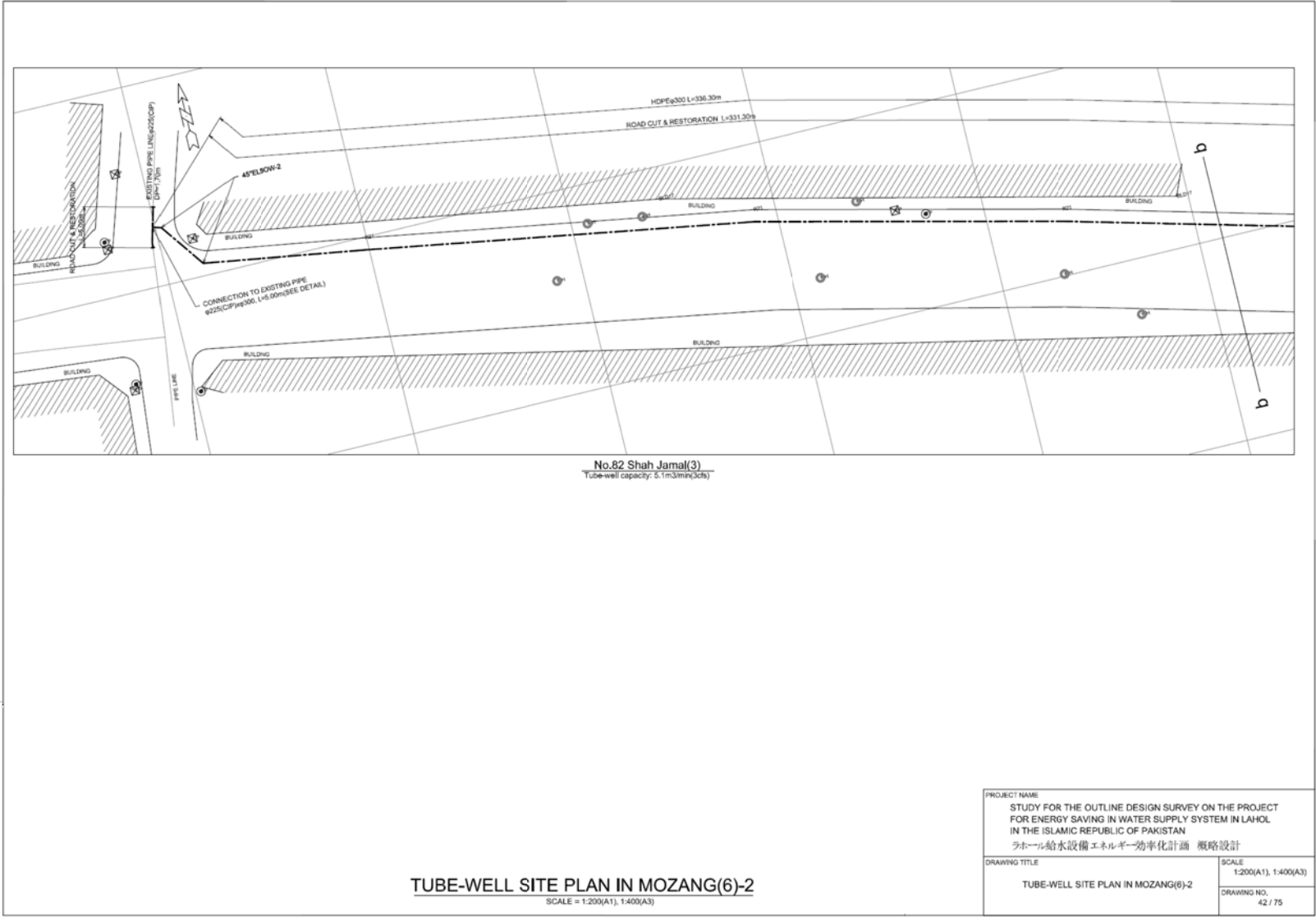


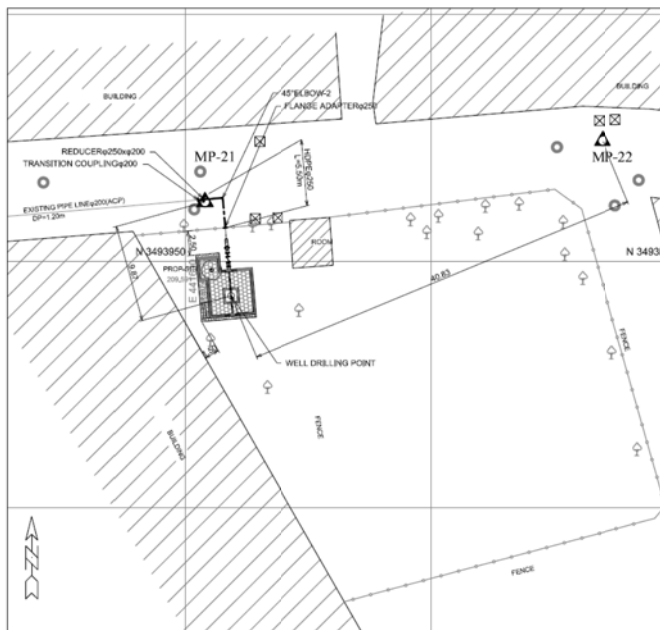
No.85 Jail Road(Lahore Collage)
Tube-well capacity: 5.1m³/min(3cfs)

TUBE-WELL SITE PLAN IN MOZANG(5)

SCALE = 1:200(A1), 1:400(A3)

PROJECT NAME	
STUDY FOR THE OUTLINE DESIGN SURVEY ON THE PROJECT FOR ENERGY SAVING IN WATER SUPPLY SYSTEM IN LAHOL IN THE ISLAMIC REPUBLIC OF PAKISTAN	
ラホール給水設備エネルギー効率化計画 概略設計	
DRAWING TITLE	SCALE
TUBE-WELL SITE PLAN IN MOZANG(5)	1:200(A1), 1:400(A3)
	DRAWING NO.
	40 / 75

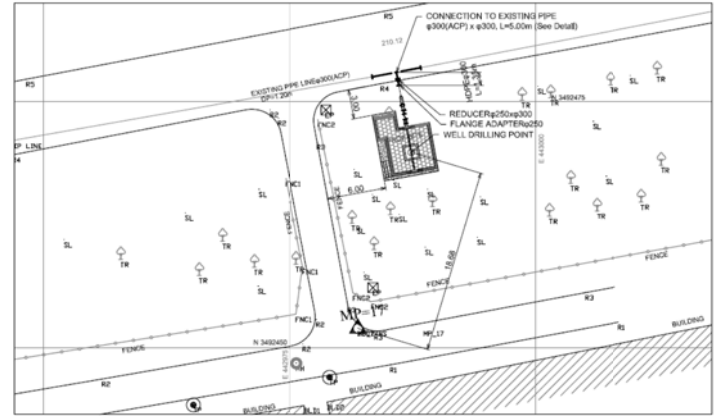




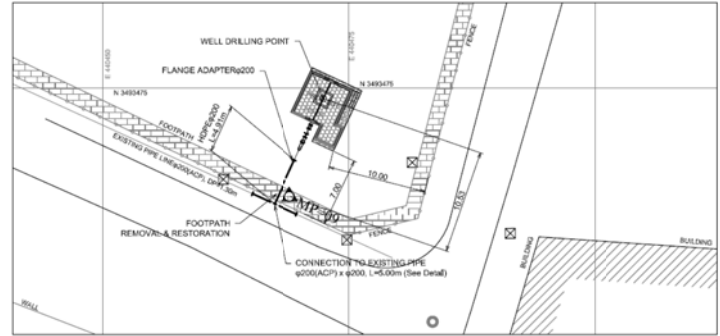
No.87 Angori Bagh Scheme-II
Tube-well capacity: 2.1m³/min (SGR)

TUBE-WELL SITE PLAN IN MAGHALPURA(1)
SCALE = 1:200(A1), 1:400(A3)

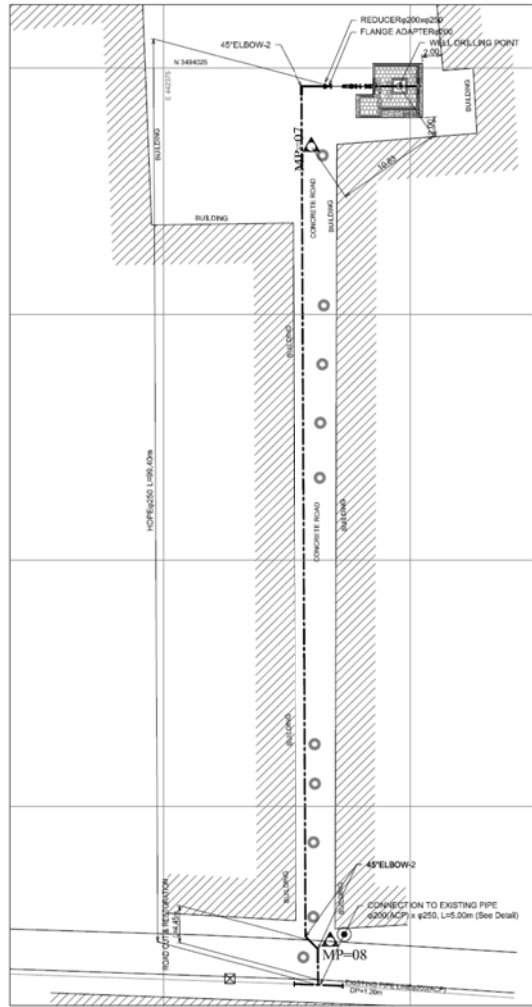
PROJECT NAME	
STUDY FOR THE OUTLINE DESIGN SURVEY ON THE PROJECT FOR ENERGY SAVING IN WATER SUPPLY SYSTEM IN LAHOL IN THE ISLAMIC REPUBLIC OF PAKISTAN	
ラホール給水設備エネルギー効率化計画 概略設計	
DRAWING TITLE	SCALE
TUBE-WELL SITE PLAN IN MAGHALPURA(1)	1:200(A1), 1:300(A3)
	DRAWING NO.
	43 / 75



No.90 Punj Pir
Tube-well capacity: 5.1m³/min(3cfs)



No.91 Sansi Quarter
Tube-well capacity: 3.4m³/min(2cfs)



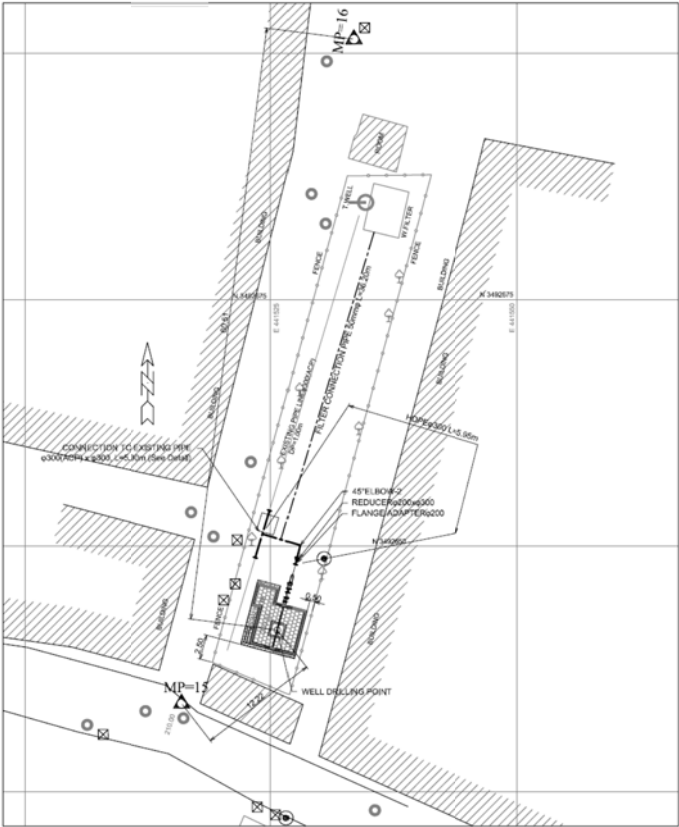
No.89 Kotli Pir Abdur Rehman
Tube-well capacity: 3.4m³/min(2cfs)

□ Installation of a water-level gauge

TUBE-WELL SITE PLAN IN MAGHALPURA(2)

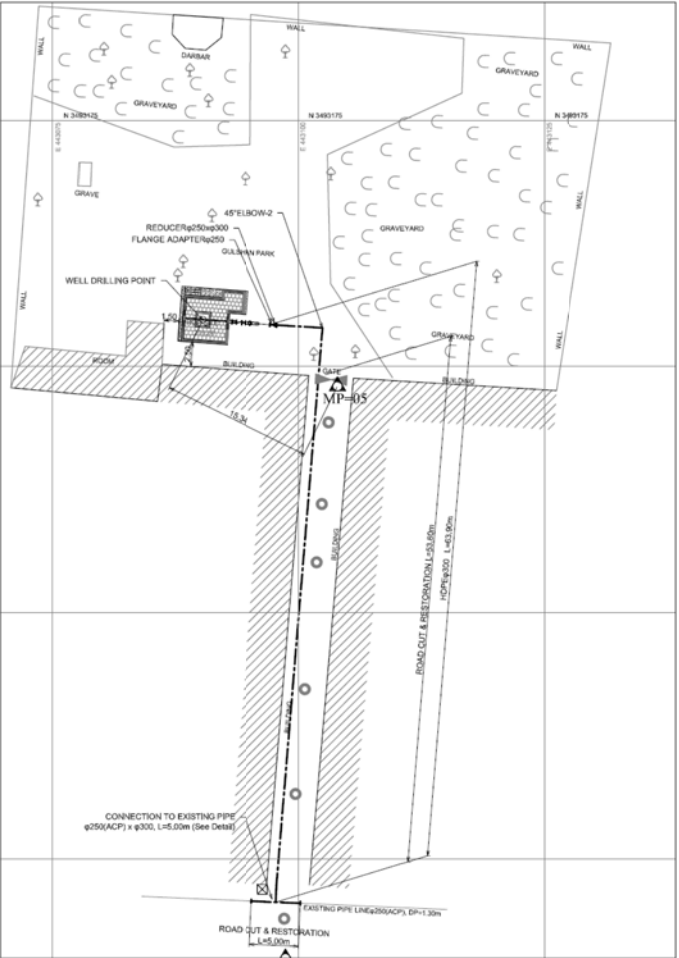
SCALE = 1:200(A1), 1:400(A3)

PROJECT NAME	
STUDY FOR THE OUTLINE DESIGN SURVEY ON THE PROJECT FOR ENERGY SAVING IN WATER SUPPLY SYSTEM IN LAHOL IN THE ISLAMIC REPUBLIC OF PAKISTAN	
ラホール給水設備エネルギー効率化計画 概略設計	
DRAWING TITLE	SCALE
TUBE-WELL SITE PLAN IN MAGHALPURA(2)	1:200(A1), 1:400(A3)
	DRAWING NO.
	44 / 75



No.93 Shah Kamal
Tube-well capacity: 3.4m³/min(2cfs)

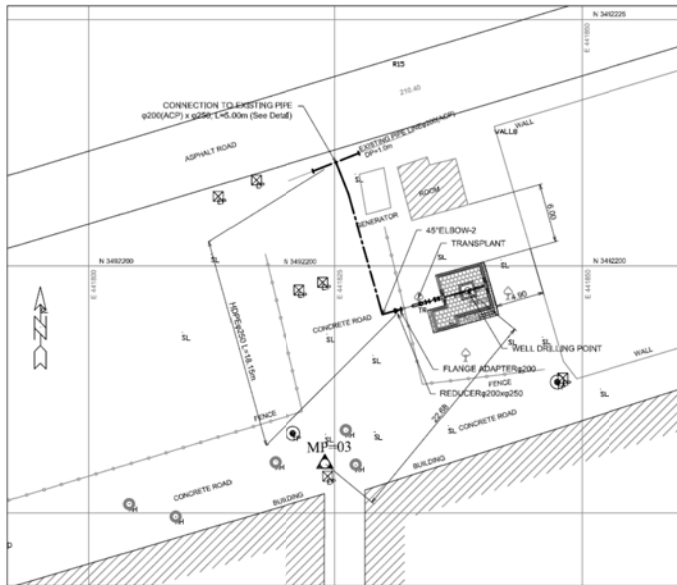
PROJECT NAME STUDY FOR THE OUTLINE DESIGN SURVEY ON THE PROJECT FOR ENERGY SAVING IN WATER SUPPLY SYSTEM IN LAHOL IN THE ISLAMIC REPUBLIC OF PAKISTAN ラホール給水設備エネルギー効率化計画 概略設計	
DRAWING TITLE TUBE-WELL SITE PLAN IN MAGHALPURA(3)	SCALE 1:200(A1), 1:400(A3)
	DRAWING NO. 45 / 75



No.92 Gulshan Park
Tube-well capacity: 5.1m³/min(3cfs)

TUBE-WELL SITE PLAN IN MAGHALPURA(3)

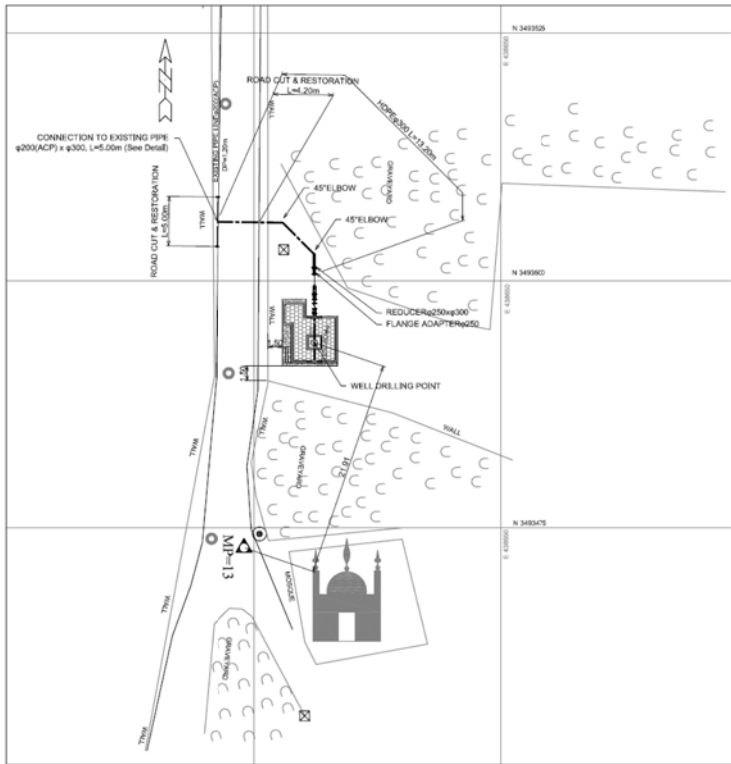
SCALE = 1:200(A1), 1:400(A3)



No.94 Lal Pul Fayyaz Park
Tube-well capacity: 3.4m³/min(2Zfs)

TUBE-WELL SITE PLAN IN MAGHALPURA(4)
SCALE = 1:200(A1), 1:400(A3)

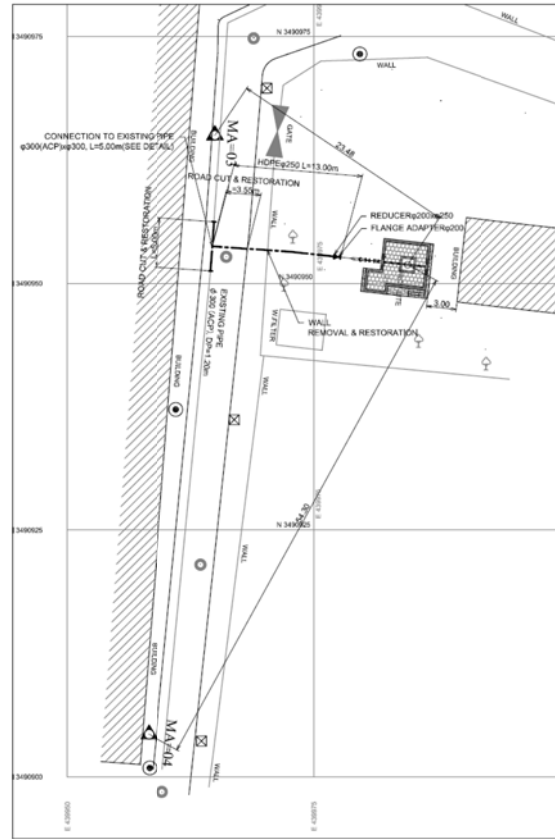
PROJECT NAME	
STUDY FOR THE OUTLINE DESIGN SURVEY ON THE PROJECT FOR ENERGY SAVING IN WATER SUPPLY SYSTEM IN LAHOL IN THE ISLAMIC REPUBLIC OF PAKISTAN	
ラホール給水設備エネルギー効率化計画 概略設計	
DRAWING TITLE	SCALE
TUBE-WELL SITE PLAN IN MAGHALPURA(4)	1:200(A1), 1:400(A3)
	DRAWING NO.
	46 / 75



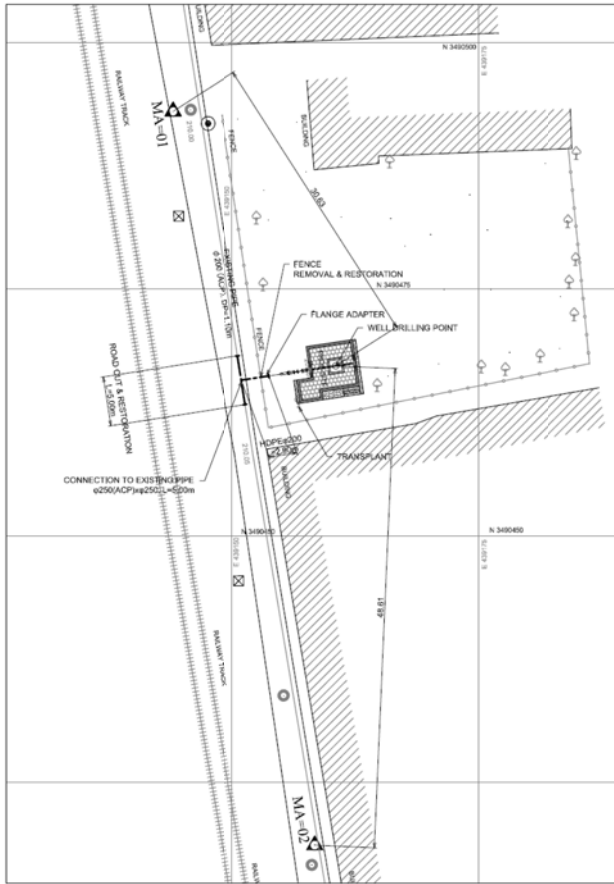
No.96 Achant Garth
Tube-well capacity: 5.1m³/min(3dls)

TUBE-WELL SITE PLAN IN MAGHALPURA(5)
SCALE = 1:200(A1), 1:400(A3)

PROJECT NAME	
STUDY FOR THE OUTLINE DESIGN SURVEY ON THE PROJECT FOR ENERGY SAVING IN WATER SUPPLY SYSTEM IN LAHOL IN THE ISLAMIC REPUBLIC OF PAKISTAN ラホール給水設備エネルギー効率化計画 概略設計	
DRAWING TITLE	SCALE
TUBE-WELL SITE PLAN IN MAGHALPURA(5)	1:200(A1), 1:400(A3)
	DRAWING NO.
	47 / 75



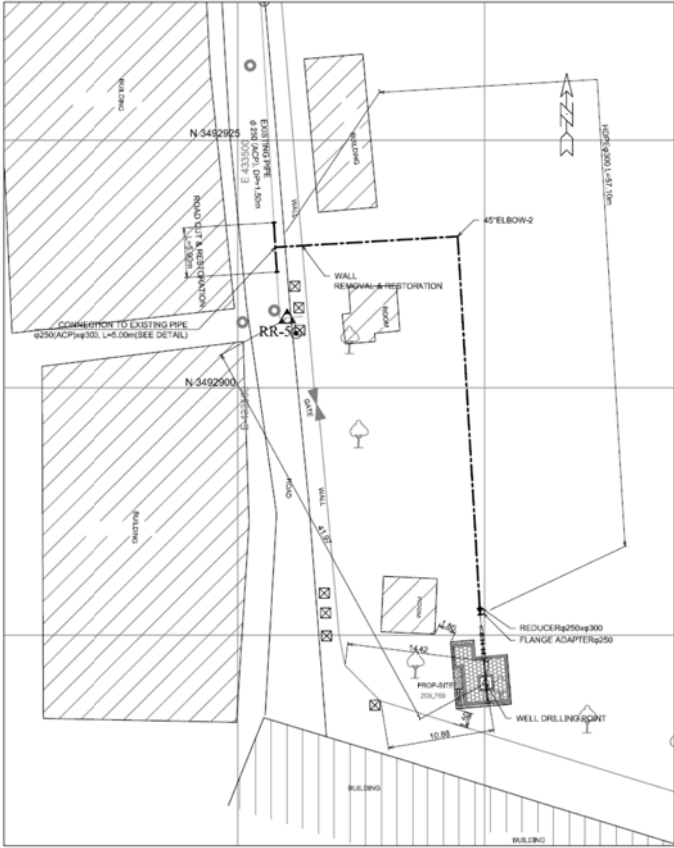
No.98 Gullistan Colony
Tube-well capacity: 3.4m³/min(2d5)



No.97 Canal Bridge
Tube-well capacity: 3.4m³/min(2d5)

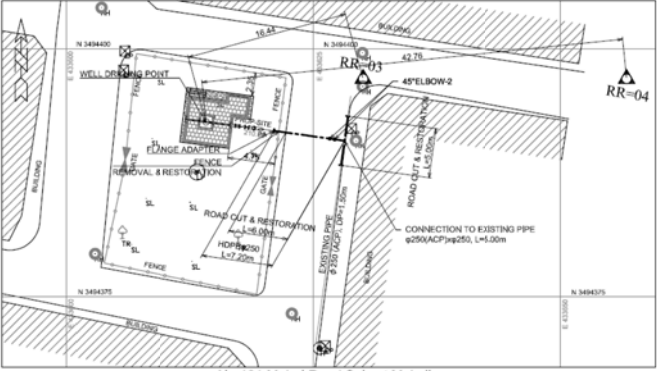
TUBE-WELL SITE PLAN IN MUSTAFABAD
SCALE = 1:200(A1), 1:400(A3)

PROJECT NAME STUDY FOR THE OUTLINE DESIGN SURVEY ON THE PROJECT FOR ENERGY SAVING IN WATER SUPPLY SYSTEM IN LAHOL IN THE ISLAMIC REPUBLIC OF PAKISTAN ラホール給水設備エネルギー効率化計画 概略設計	
DRAWING TITLE TUBE-WELL SITE PLAN IN MUSTAFABAD	SCALE 1:200(A1), 1:400(A3)
	DRAWING NO. 48 / 75



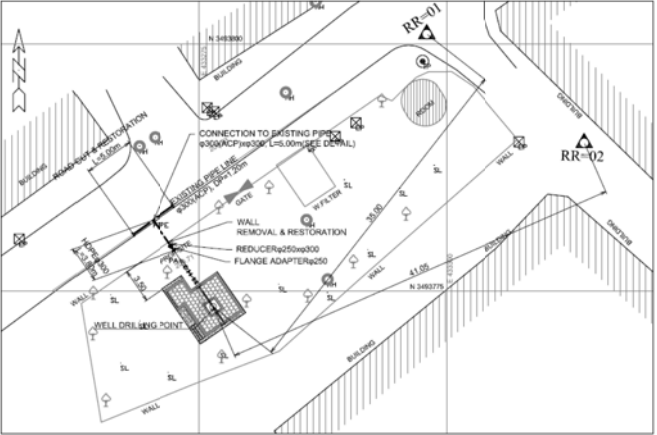
No.99 Dev Samaj Road (Commissioner Office)

Tube-well capacity: 6.8m³/min(4cls)



No.101 Mohai Road Salmat Mohalla

Tube-well capacity: 6.8m³/min(4cls)



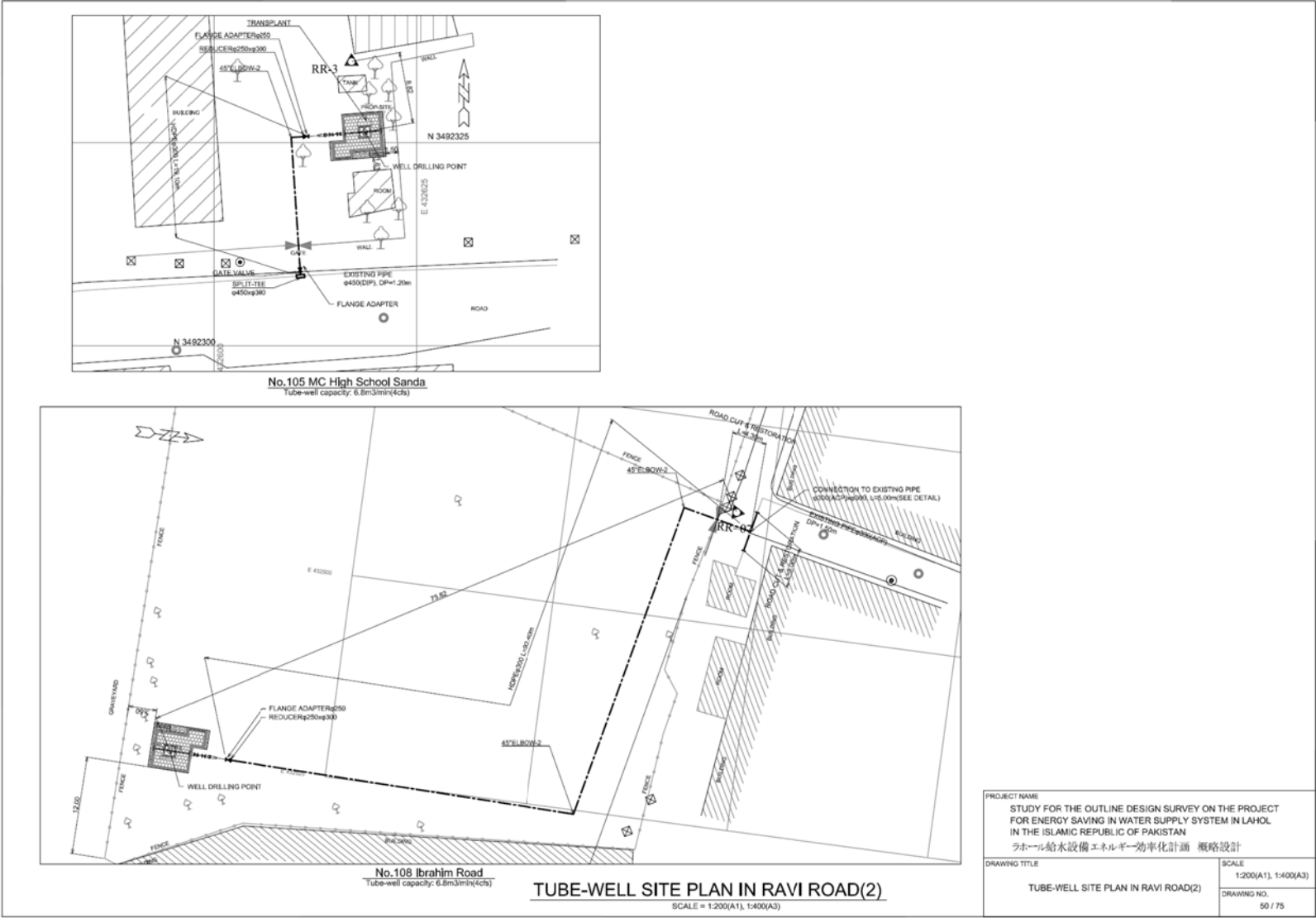
No.104 Sardar Chapal

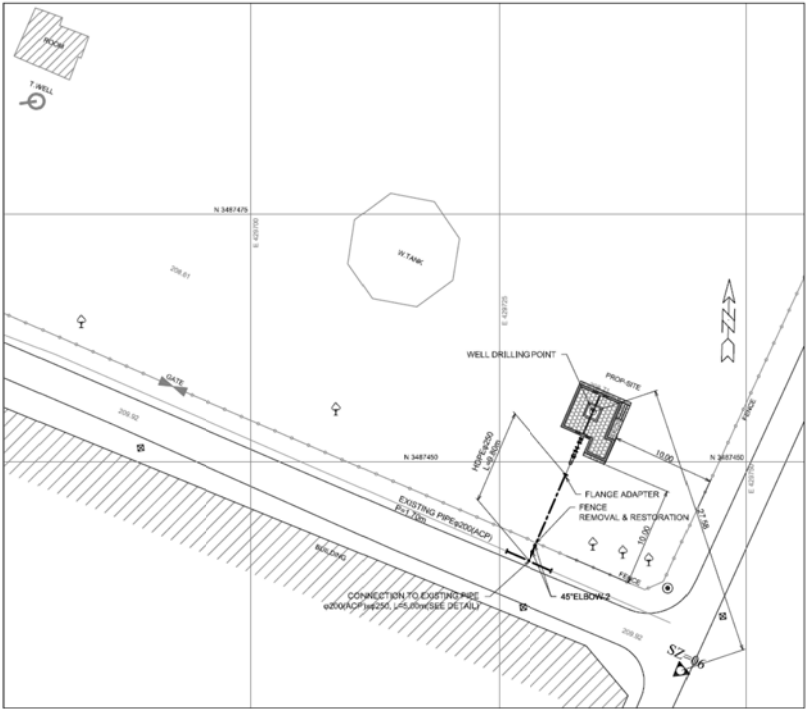
Tube-well capacity: 6.8m³/min(4cls)

TUBE-WELL SITE PLAN IN RAVI ROAD(1)

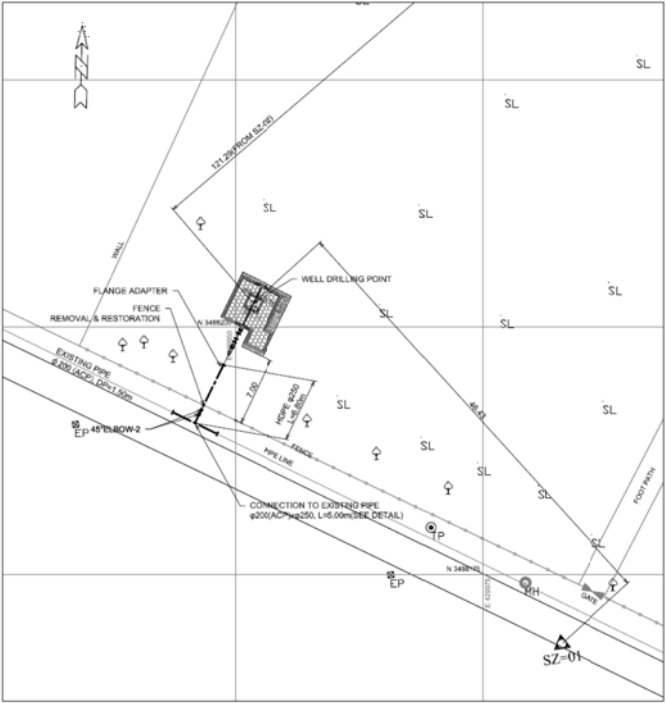
SCALE = 1:200(A1), 1:400(A3)

PROJECT NAME	
STUDY FOR THE OUTLINE DESIGN SURVEY ON THE PROJECT FOR ENERGY SAVING IN WATER SUPPLY SYSTEM IN LAHOL IN THE ISLAMIC REPUBLIC OF PAKISTAN	
ラホール給水設備エネルギー効率化計画 概略設計	
DRAWING TITLE	SCALE
TUBE-WELL SITE PLAN IN RAVI ROAD(1)	1:200(A1), 1:400(A3)
DRAWING NO.	DRAWING NO.
	49 / 75





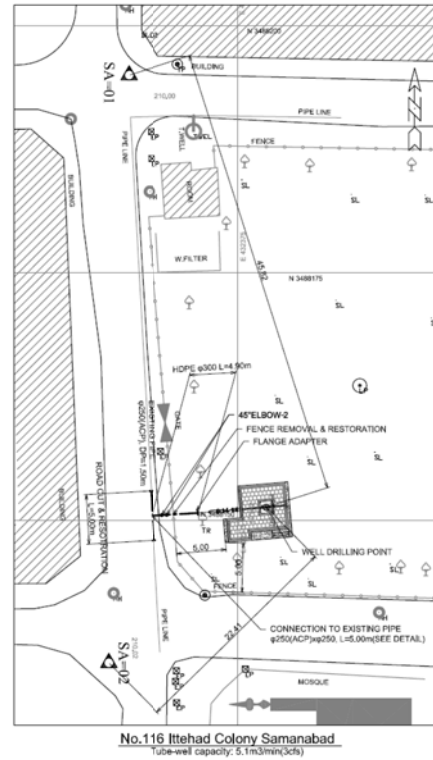
No.111 K-Block Shabzazar
(tube-well capacity: 6.8m³/min(4cfs))



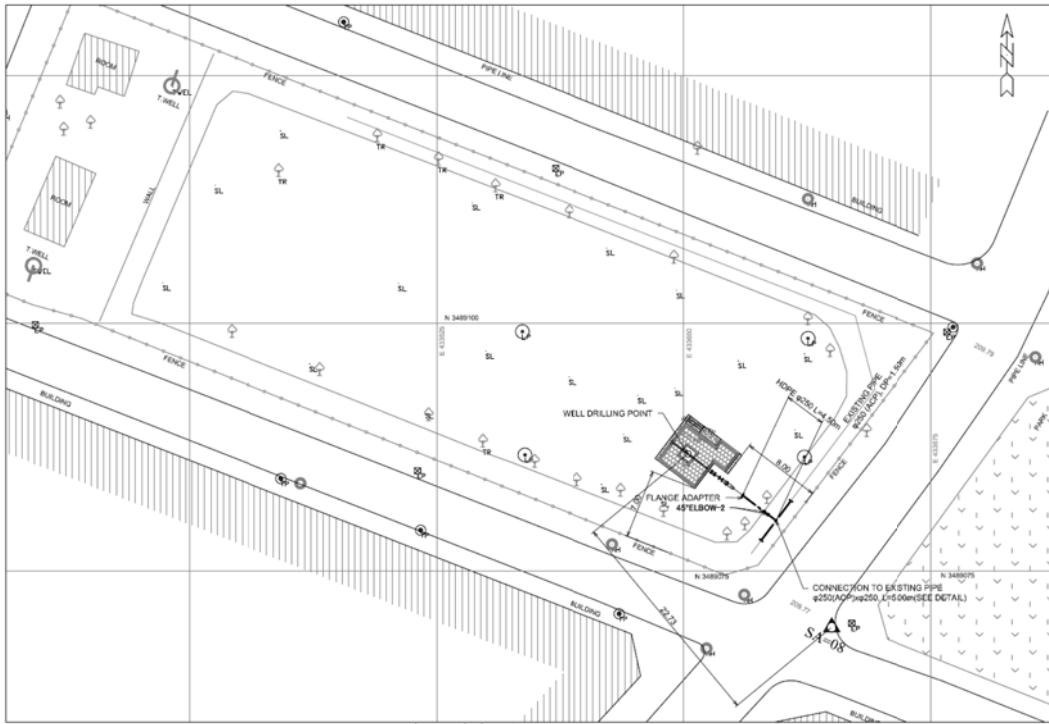
No.110 E-Block Shabzazar
(tube-well capacity: 6.8m³/min(4cfs))

TUBE-WELL SITE PLAN IN SABZAZAR(1)
SCALE = 1:200(A1), 1:400(A3)

PROJECT NAME STUDY FOR THE OUTLINE DESIGN SURVEY ON THE PROJECT FOR ENERGY SAVING IN WATER SUPPLY SYSTEM IN LAHOL IN THE ISLAMIC REPUBLIC OF PAKISTAN ラホール給水設備エネルギー効率化計画 概略設計	
DRAWING TITLE TUBE-WELL SITE PLAN IN SABZAZAR(1)	SCALE 1:200(A1), 1:400(A3)
	DRAWING NO. 51 / 75



No.116 Ittehad Colony Samanabad
Tube-well capacity: 5.1m³/min(3cfs)

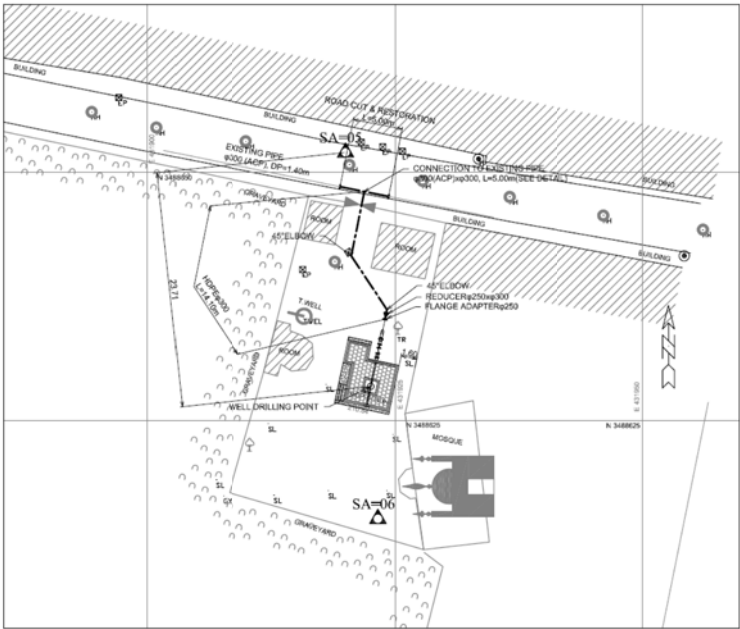


No.115 N-Block Samanabad
Tube-well capacity: 5.1m³/min(3cfs)

TUBE-WELL SITE PLAN IN SAMANABAD(1)

SCALE = 1:200(A1), 1:400(A3)

PROJECT NAME	
STUDY FOR THE OUTLINE DESIGN SURVEY ON THE PROJECT FOR ENERGY SAVING IN WATER SUPPLY SYSTEM IN LAHOL IN THE ISLAMIC REPUBLIC OF PAKISTAN	
ラホール給水設備エネルギー効率化計画 概略設計	
DRAWING TITLE	SCALE
TUBE-WELL SITE PLAN IN SAMANABAD(1)	1:200(A1), 1:400(A3)
DRAWING NO.	53 / 75

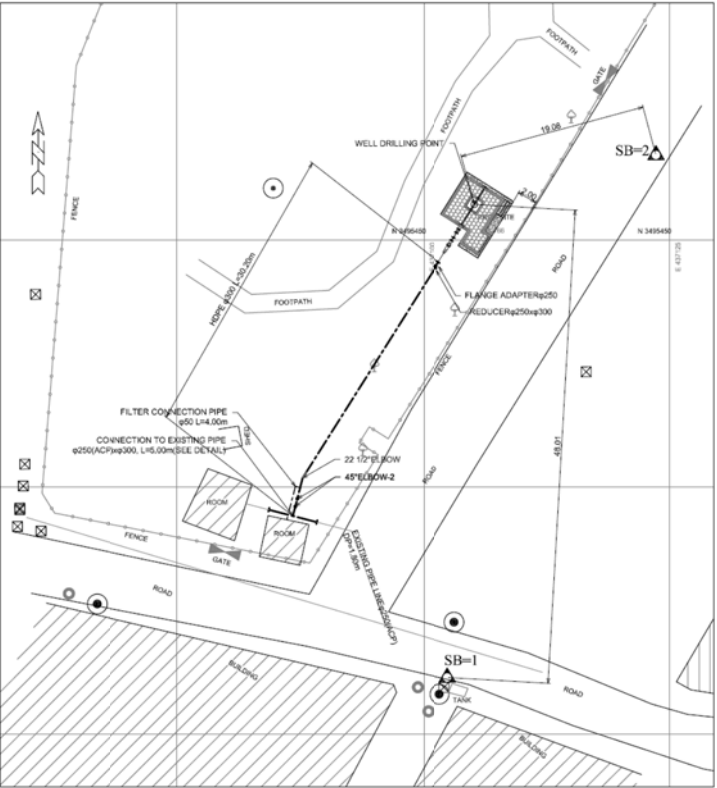


No.117 Pir Buddan Shah Dholanwal
Tube-well capacity: 6.8m³/min(4cfs)

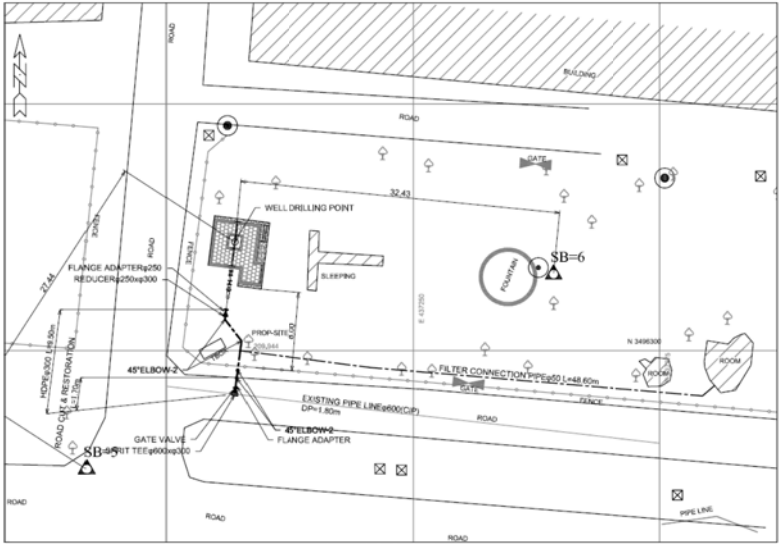
TUBE-WELL SITE PLAN IN SAMANABAD(2)

SCALE = 1:200(A1), 1:400(A3)

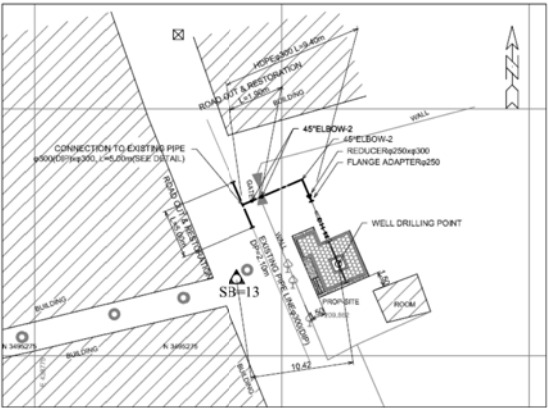
PROJECT NAME	
STUDY FOR THE OUTLINE DESIGN SURVEY ON THE PROJECT FOR ENERGY SAVING IN WATER SUPPLY SYSTEM IN LAHOL IN THE ISLAMIC REPUBLIC OF PAKISTAN	
ラホール給水設備エネルギー効率化計画 概略設計	
DRAWING TITLE	SCALE
TUBE-WELL SITE PLAN IN SAMANABAD(2)	1:200(A1), 1:400(A3)
DRAWING NO.	54 / 75



No.121 Taj Pura Ground
Tube-well capacity: 6.8m³/min(4cfm)



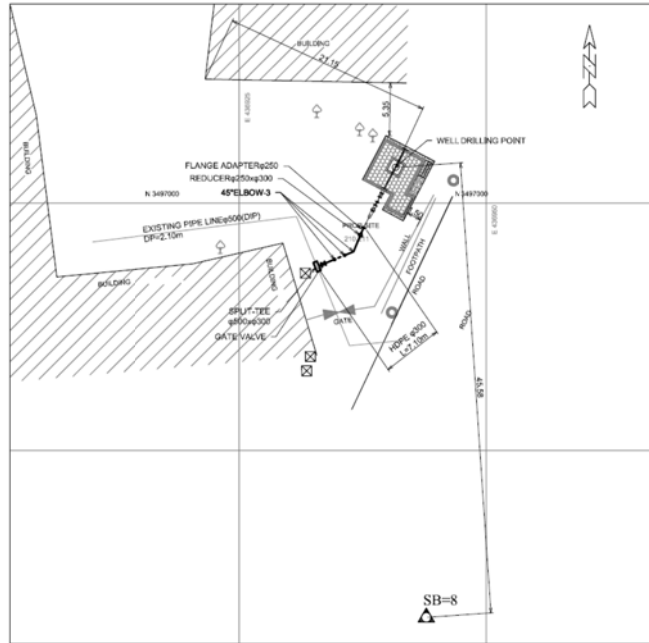
No.119 Children Park
Tube-well capacity: 6.8m³/min(4cfm)



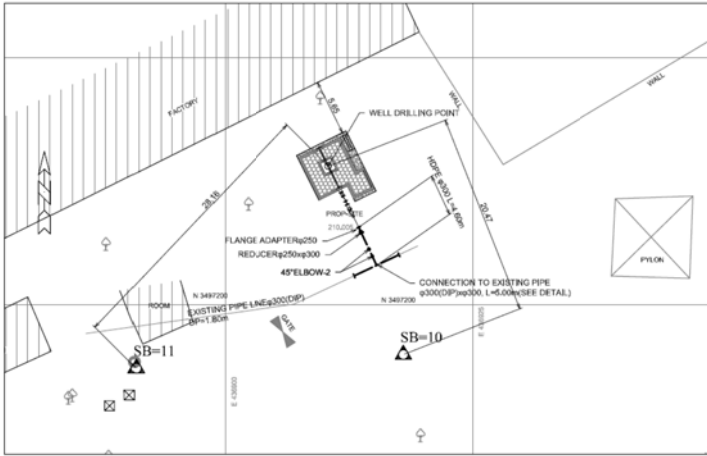
No.122 Shahab Stadium(Fazal Pura)
Tube-well capacity: 6.8m³/min(4cfm)

TUBE-WELL SITE PLAN IN SHADBAGH(1)
SCALE = 1:200(A1), 1:400(A3)

PROJECT NAME	
STUDY FOR THE OUTLINE DESIGN SURVEY ON THE PROJECT FOR ENERGY SAVING IN WATER SUPPLY SYSTEM IN LAHOL IN THE ISLAMIC REPUBLIC OF PAKISTAN	
ラホール給水設備エネルギー効率化計画 概略設計	
DRAWING TITLE	SCALE
TUBE-WELL SITE PLAN IN SHADBAGH(1)	1:200(A1), 1:400(A3)
	DRAWING NO.
	55 / 75



No.126 Shadbagh Well Center-IV
Tube-well capacity: 6.8m³/min(4cfs)

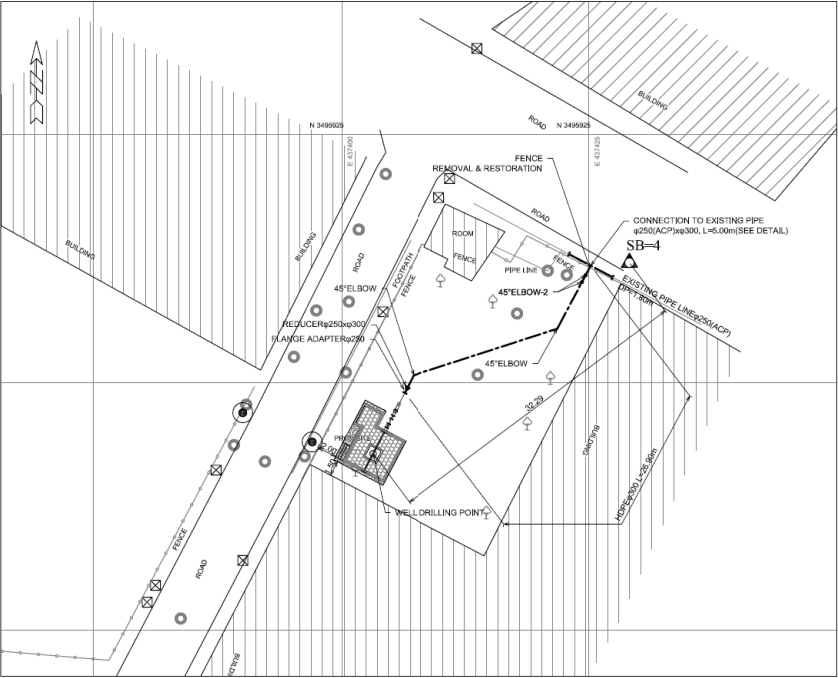


No.124 Shadbagh Well Center-I
Tube-well capacity: 6.8m³/min(4cfs)

TUBE-WELL SITE PLAN IN SHADBAGH(2)

SCALE = 1:200(A1), 1:400(A3)

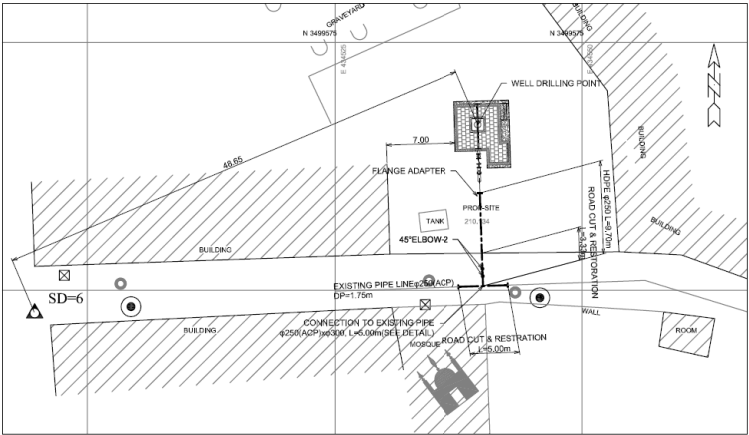
PROJECT NAME	
STUDY FOR THE OUTLINE DESIGN SURVEY ON THE PROJECT FOR ENERGY SAVING IN WATER SUPPLY SYSTEM IN LAHOL IN THE ISLAMIC REPUBLIC OF PAKISTAN	
ラホール給水設備エネルギー効率化計画 概略設計	
DRAWING TITLE	SCALE
TUBE-WELL SITE PLAN IN SHADBAGH(2)	1:200(A1), 1:400(A3)
DRAWING NO.	56 / 75



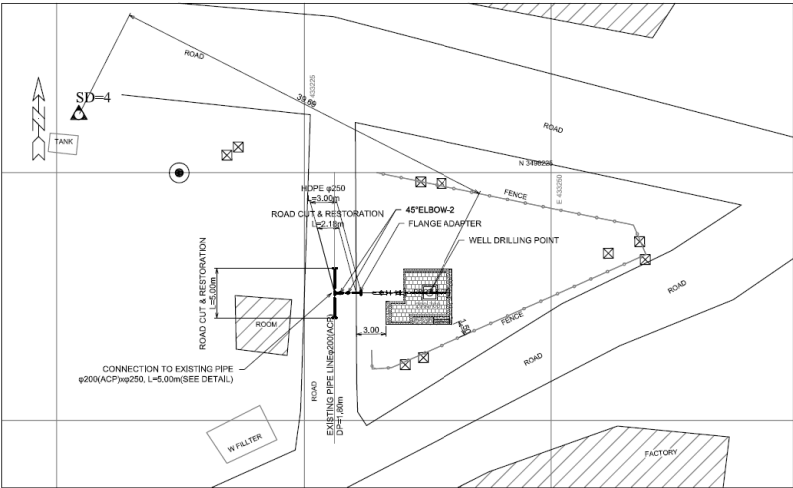
No.127 Shish Mehal Road
Tube-well capacity: 6.8m³/min(4cfs)

TUBE-WELL SITE PLAN IN SHADBAGH(3)
SCALE = 1:200(A1), 1:400(A3)

PROJECT NAME	
STUDY FOR THE OUTLINE DESIGN SURVEY ON THE PROJECT FOR ENERGY SAVING IN WATER SUPPLY SYSTEM IN LAHOL IN THE ISLAMIC REPUBLIC OF PAKISTAN ラホール給水設備エネルギー効率化計画 概略設計	
DRAWING TITLE	SCALE
TUBE-WELL SITE PLAN IN SHADBAGH(3)	1:200(A1), 1:400(A3)
DRAWING NO. 57 / 76	



No.129 Takia Khusrianwala Shahdara UC-6
Tube-well capacity: 6.8m³/min(4ch)

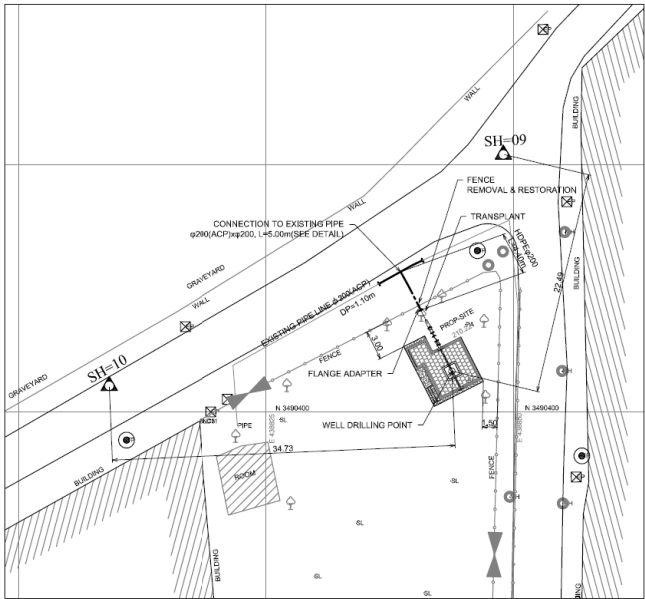


No.131 Saeed Park
Tube-well capacity: 6.8m³/min(4ch)

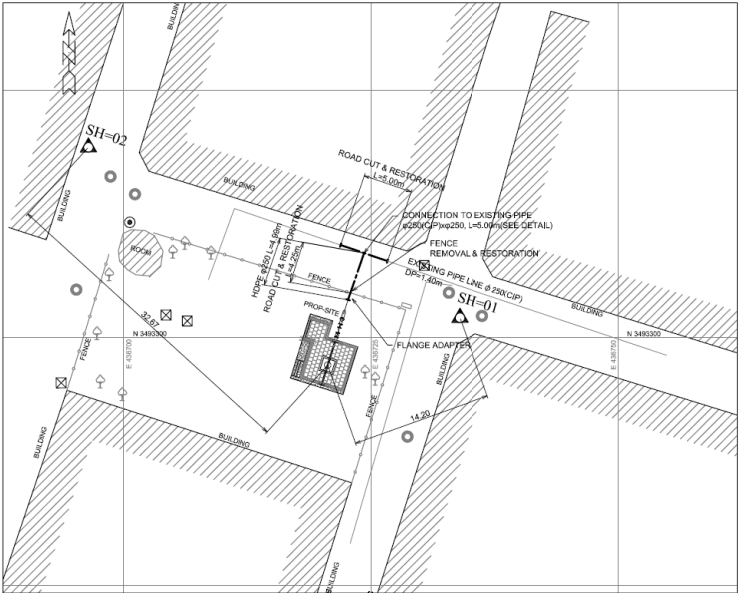
TUBE-WELL SITE PLAN IN SHAHDARA

SCALE = 1:200(A1), 1:400(A3)

PROJECT NAME	
STUDY FOR THE OUTLINE DESIGN SURVEY ON THE PROJECT FOR ENERGY SAVING IN WATER SUPPLY SYSTEM IN LAHOL IN THE ISLAMIC REPUBLIC OF PAKISTAN ラホール給水設備エネルギー効率化計画 概略設計	
DRAWING TITLE	SCALE
TUBE-WELL SITE PLAN IN SHAHDARA	1:200(A1), 1:400(A3)
	DRAWING NO.
	58 / 75



No.137 Scotch Corner / Upper Mall
Tube-well capacity: 3.4m³/min(2cfs)

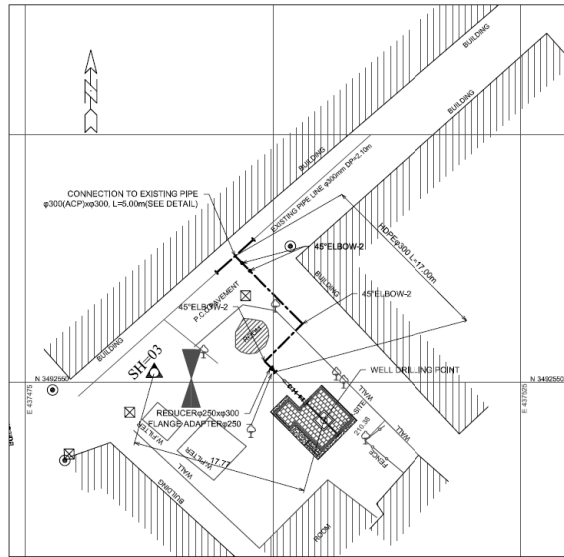


No.136 Tegore Park
Tube-well capacity: 5.1m³/min(3cfs)

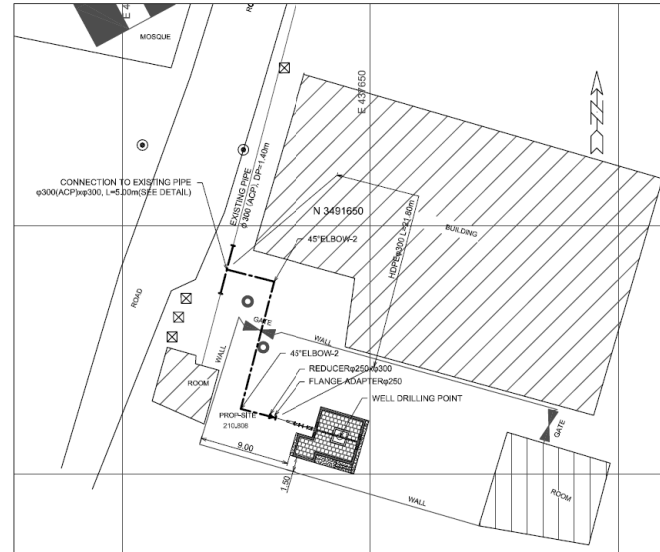
TUBE-WELL SITE PLAN IN SHIMLA HILL(1)

SCALE = 1:200(A1), 1:400(A3)

PROJECT NAME	
STUDY FOR THE OUTLINE DESIGN SURVEY ON THE PROJECT FOR ENERGY SAVING IN WATER SUPPLY SYSTEM IN LAHOL IN THE ISLAMIC REPUBLIC OF PAKISTAN	
ラホール給水設備エネルギー効率化計画 概略設計	
DRAWING TITLE	SCALE
TUBE-WELL SITE PLAN IN SHIMLA HILL(1)	1:200(A1), 1:400(A3)
DRAWING NO.	59 / 75



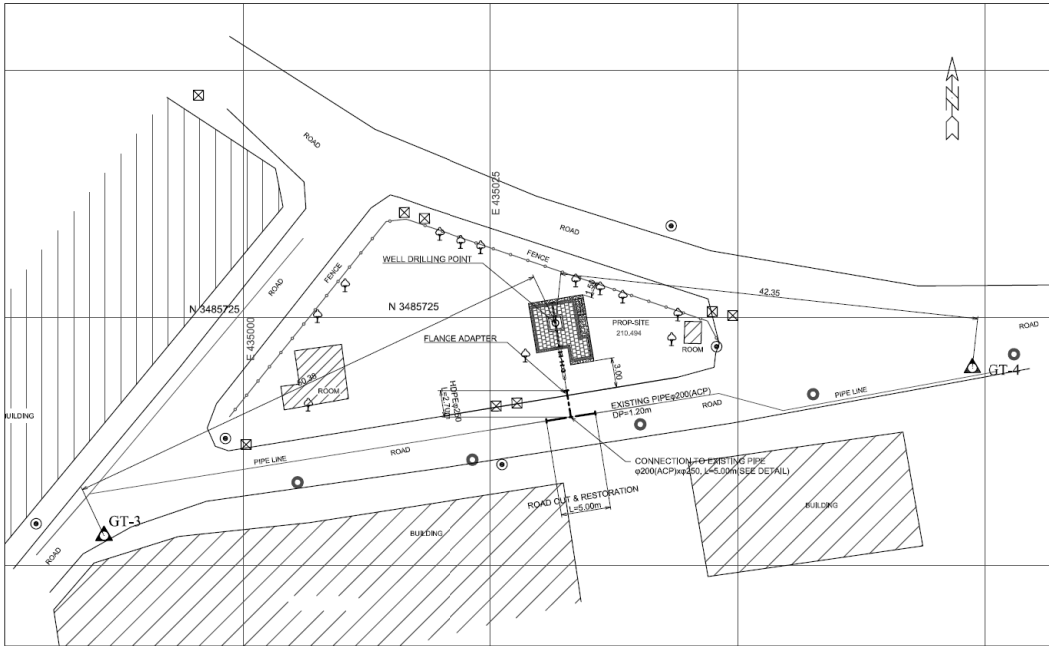
No.138 Muhammad Nagar
Tube-well capacity: 5.1m³/min(3cfs)



No.140 Habib Ullah Road
Tube-well capacity: 5.1m³/min(3cfs)

TUBE-WELL SITE PLAN IN SHIMLA HILL(2)
SCALE = 1:200(A1), 1:400(A3)

PROJECT NAME	
STUDY FOR THE OUTLINE DESIGN SURVEY ON THE PROJECT FOR ENERGY SAVING IN WATER SUPPLY SYSTEM IN LAHOL IN THE ISLAMIC REPUBLIC OF PAKISTAN ラホール給水設備エネルギー効率化計画 概略設計	
DRAWING TITLE	SCALE
TUBE-WELL SITE PLAN IN SHIMLA HILL(2)	1:200(A1), 1:400(A3)
	DRAWING NO.
	60 / 75

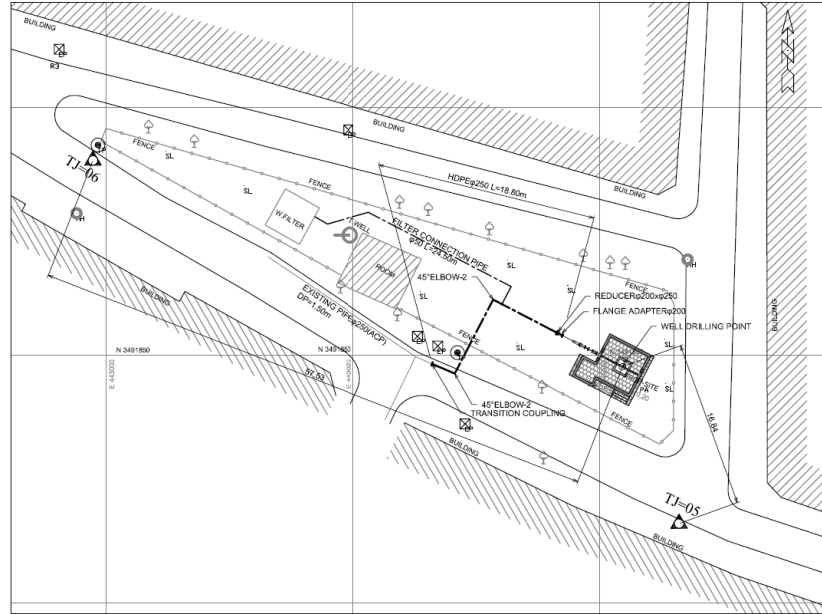


No.141 Ahmad Block
Tube-well capacity: 5.1m³/min(3cfs)

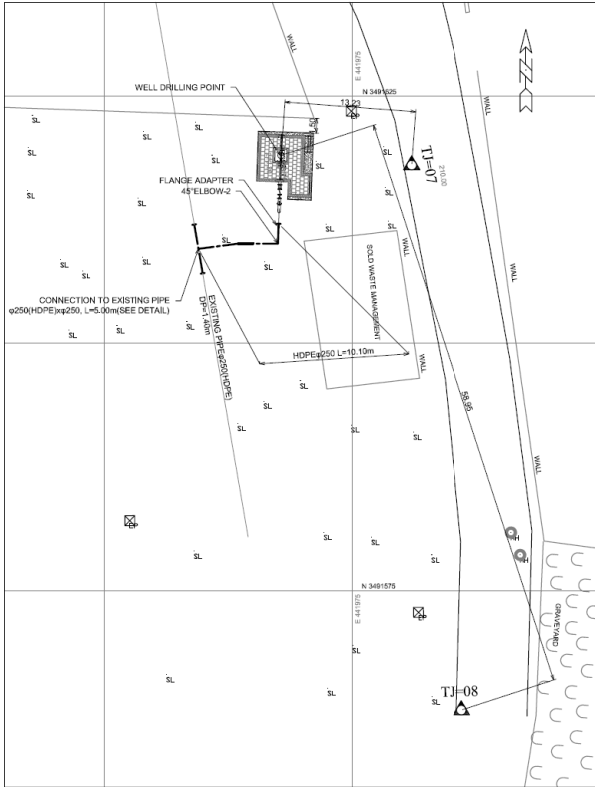
TUBE-WELL SITE PLAN IN GARDEN TOWN

SCALE = 1:200

PROJECT NAME	
STUDY FOR THE OUTLINE DESIGN SURVEY ON THE PROJECT FOR ENERGY SAVING IN WATER SUPPLY SYSTEM IN LAHOL IN THE ISLAMIC REPUBLIC OF PAKISTAN ラホール給水設備エネルギー効率化計画 概略設計	
DRAWING TITLE	SCALE
TUBE-WELL SITE PLAN IN GARDEN TOWN	1:200
	DRAWING NO. 61 / 75



No.144 A-Block Tajpura
Tube-well capacity: 3.4m³/min(2cfs)

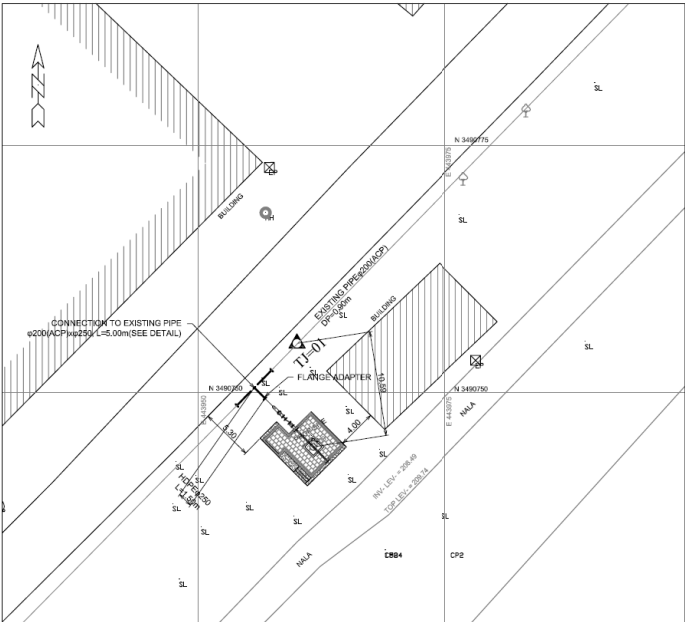


No.143 Ghaziabad Bus Stop
Tube-well capacity: 5.1m³/min(3cfs)

TUBE-WELL SITE PLAN IN TAJPURA(1)

SCALE = 1:200(A1), 1:400(A3)

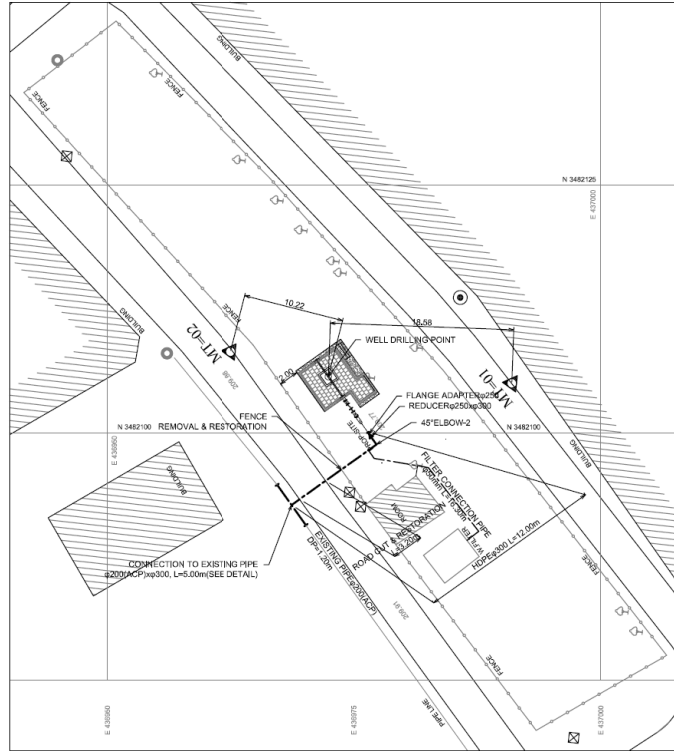
PROJECT NAME	
STUDY FOR THE OUTLINE DESIGN SURVEY ON THE PROJECT FOR ENERGY SAVING IN WATER SUPPLY SYSTEM IN LAHOL IN THE ISLAMIC REPUBLIC OF PAKISTAN	
ラホール給水設備エネルギー効率化計画 概略設計	
DRAWING TITLE	SCALE
TUBE-WELL SITE PLAN IN TAJPURA(1)	1:200(A1), 1:400(A3)
	DRAWING NO.
	62 / 75



No.145 Jorrey Pull
Tube-well capacity: 5.1 m³/min (3d/s)

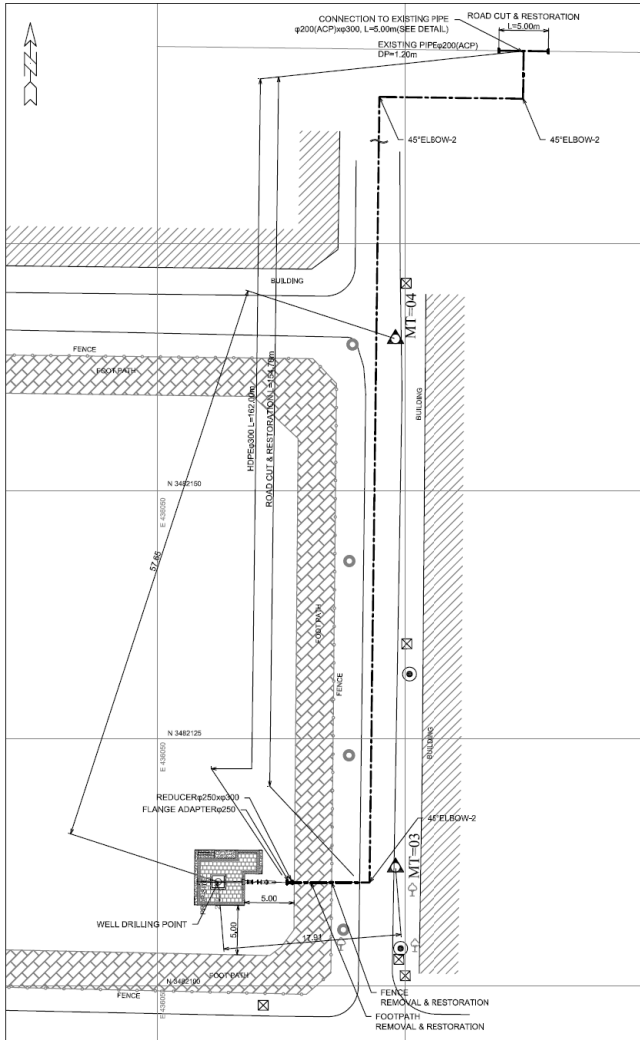
TUBE-WELL SITE PLAN IN TAJPURA(2)
SCALE = 1:200(A1), 1:400(A3)

PROJECT NAME	
STUDY FOR THE OUTLINE DESIGN SURVEY ON THE PROJECT FOR ENERGY SAVING IN WATER SUPPLY SYSTEM IN LAHOL IN THE ISLAMIC REPUBLIC OF PAKISTAN ラホール給水設備エネルギー効率化計画 概略設計	
DRAWING TITLE	SCALE
TUBE-WELL SITE PLAN IN TAJPURA(2)	1:200(A1), 1:400(A3)
	DRAWING NO. 63 / 75



No.147 S-Block Model Town EXT
Tube-well capacity: 5.1m³/min(3cfs)

PROJECT NAME	
STUDY FOR THE OUTLINE DESIGN SURVEY ON THE PROJECT FOR ENERGY SAVING IN WATER SUPPLY SYSTEM IN LAHOL IN THE ISLAMIC REPUBLIC OF PAKISTAN	
ラホール給水設備エネルギー効率化計画 概略設計	
DRAWING TITLE	SCALE
TUBE-WELL SITE PLAN IN TOWNSHIP	1:200(A1), 1:400(A3)
	DRAWING NO.
	64 / 75



No.146 Q-Block Model Town EXT
Tube-well capacity: 5.1m³/min(3cfs)

TUBE-WELL SITE PLAN IN TOWNSHIP

SCALE = 1:200(A1), 1:400(A3)