

# Appendices

## **Appendix 1    Member List of the Study Team**

## 1. Member List of the Study Team

### (1) First Field Survey

Name	Assignment	Organization
Hiroshi SUMIYOSHI	Team Leader	Japan International Corporation Agency
Gaku SAITO	Planning Management	Japan International Corporation Agency
Mitsuhisa NISHIKAWA	Chief Consultant / Power Development Planning	Yachiyo Engineering Co., Ltd.
Makoto ABE	Deputy Chief Consultant/ Transmission and Distribution Facilities	Yachiyo Engineering Co., Ltd.
Kenji SAKEMURA	Substation Facilities 1 (Ilala Substation)	West Japan Engineering Consultants, Inc.
Shinya KONDO	Substation Facilities 2 (Other Substations)	West Japan Engineering Consultants, Inc.
Kazuyoshi NAGASAKA <sup>*1)</sup>	Power System Analysis	Yachiyo Engineering Co., Ltd.
Keiichiro OHASHI	Protection Coordination Design	West Japan Engineering Consultants, Inc.
Mitsuharu NAKAGAWA	Construction and Procurement Planning / Cost Estimation	Yachiyo Engineering Co., Ltd.
Teruo KURUMADA	Facilities Planning / Cost Estimation	Yachiyo Engineering Co., Ltd.
Masashi KISHIDA	Social and Environmental Considerations	Yachiyo Engineering Co., Ltd.
Kyohei KUROHANE	Coordinator / Assistance for Distribution Facilities	Yachiyo Engineering Co., Ltd.

Remarks: <sup>\*1)</sup> Work Analysis in Japan only.

### (2) Second Field Survey

Name	Assignment	Organization
Makoto ABE	Deputy Chief Consultant/ Transmission and Distribution Facilities	Yachiyo Engineering Co., Ltd.
Kenji SAKEMURA	Substation Facilities 1 (Ilala Substation)	West Japan Engineering Consultants, Inc.

(3) Third Field Survey (Explanation on Draft Final Report)

<b>Name</b>	<b>Assignment</b>	<b>Organization</b>
Toshiyuki HAYASHI	Team Leader	Japan International Corporation Agency
Gaku SAITO	Planning Management	Japan International Corporation Agency
Mitsuhisa NISHIKAWA	Chief Consultant / Power Development Planning	Yachiyo Engineering Co., Ltd.
Makoto ABE	Deputy Chief Consultant/ Transmission and Distribution Facilities	Yachiyo Engineering Co., Ltd.
Kenji SAKEMURA	Substation Facilities 1 (Ilala Substation)	West Japan Engineering Consultants, Inc.
Mitsuharu NAKAGAWA	Construction and Procurement Planning / Cost Estimation	Yachiyo Engineering Co., Ltd.
Kyohei KUROHANE	Coordinator / Assistance for Distribution Facilities	Yachiyo Engineering Co., Ltd.

## **Appendix 2 Study Schedule**

## 2. Study Schedule

### (1) First Field Survey

No.	Date	Day	Contents of the Survey		Accommodation	
			JICA members	Transmission and Distribution Facilities		Ilala substation and Other Substations
				Protection Coordination Design, Construction and Procurement Planning, Facilities Planning, Social and Environmental Considerations		
1	Feb. 24	Sun.		① Trip (Narita 22:00 → Dubai 5:00 by JL5095)	Flight	
2	Feb. 25	Mon.		① Trip (Dubai 10:15 → Dar es salaam 14:55 by EK725)	Dar es salaam	
3	Feb. 26	Tue.		① Courtesy call to the Ministry of Energy and Minerals (explanation of the IC/R and survey schedule) ② Courtesy call to TANESCO (explanation and discussion of IC/R, survey schedule, project contents, etc. and submission of Questionnaire) ③ Courtesy call to JICA Office (explanation of the IC/R, survey schedule and project contents)	Dar es salaam	
4	Feb. 27	Wed.		① Discussion of the requested components and explanation of questionnaire (TANESCO) ② Confirmation of the requested sites ③ Survey of Ilala, Muhimbili, Msasani and Mwananyamala substation sites	Dar es salaam	
5	Feb. 28	Thu.		① Contract of topographical survey and soil explorations ② Discussion of the requested components and explanation of questionnaire (TANESCO) ③ Confirmation of the requested sites and superior plans ④ Survey of Tegeta, Jangwani Beach and Ubungo substation sites ⑤ Request for estimation of local labor expenses and materials, etc.	Dar es salaam	
6	Mar. 1	Fri.		① Confirmation of the organization and budget of MEM and TANESCO ② Discussion of the requested components (TANESCO, Transmission Department) ③ Survey of the 132 kV Transmission line route (Ubungo substation ~ Ilala substation)	Dar es salaam	
7	Mar. 2	Sat.	① JICA members : Trip (Narita → Dubai)	① Survey Team discussions, arrangement of collected data ② Market survey in Dar es Salaam	Dar es salaam	
8	Mar. 3	Sun.	① JICA members : Trip (Dubai → Dar es salaam)	① Survey Team discussions, arrangement of collected data ② Market survey in Dar es Salaam	Dar es salaam	
9	Mar. 4	Mon.	① Submission and discussion of the draft M/D ② Explanation of the Grant scheme, scope of works on the Tanzanian side and overall schedule, etc. ③ Corrections to the draft M/D	① Survey Team discussions ② Request for estimation of local labor expenses and materials, etc. ③ Survey of the 132 kV distribution line route (Ubungo substation ~ First tower)	Dar es salaam	
10	Mar. 5	Tue.	① Submission and discussion of the draft M/D ② Explanation of the Grant scheme, scope of works on the Tanzanian side and overall schedule, etc. ③ Corrections to the draft M/D ④ Site survey	① Sorting of Questionnaire (MEM) ② Request for estimation of local labor expenses and materials, etc. ③ Social and Environmental Considerations Meeting (TANESCO, local contractor)	Dar es salaam	
11	Mar. 6	Wed.	① Submission and discussion of the draft M/D ② Explanation of the Grant scheme, scope of works on the Tanzanian side and overall schedule, etc. ③ Corrections to the draft M/D ④ Site survey	① Sorting of Questionnaire (TANESCO) ② Submission and discussion of the draft M/D ③ Meeting with JICA technical cooperation project team ④ Meteorological data request ⑤ Survey of port	Dar es salaam	
12	Mar. 7	Thu.	① Signing of the M/D ② Site survey	① Sorting of Questionnaire (TANESCO) ② Survey of Ilala substation sites, Supervise the survey of natural conditions ③ Survey of Transit route and Weight regulation (TANROADS)	Dar es salaam	
13	Mar. 8	Fri.	① Reporting to the Japanese Embassy and JICA Tanzania Office ② JICA member 1 ; Trip (Dar es salaam → Dubai)	① Survey of the 33 kV distribution line route (Mwananyamala substation ~ Makumbusho substation) ② Chief Consultant ; Trip (Dar es salaam 16:45 → Dubai 23:20 by EK726) ③ Survey of aid trends by other donors (AIDB) ④ Market survey in Dar es Salaam	Dar es salaam	
14	Mar. 9	Sat.	① JICA members 1 ; Trip (Dubai → Narita)	① Survey Team discussions, sorting of the collected materials, market survey in Dar es Salaam ② Chief Consultant ; Trip (Dubai 2:50 → Narita 17:35 by JL5096)	Dar es salaam	
15	Mar. 10	Sun.		① Survey Team discussions, sorting of the collected materials, market survey in Dar es Salaam	Dar es salaam	
16	Mar. 11	Mon.	① Survey of aid trends by other donors (Hifab)	① Survey of the 132 kV distribution line route (Ubungo substation ~ Ilala substation) ② Survey of aid trends by other donors (Hifab) ③ Survey of the 132 kV distribution line route (Ubungo substation ~ Ilala substation)	Dar es salaam	
17	Mar. 12	Tue.	① Joint meeting with other donors (Hifab, AfDB, WB, JICA) ② Explanation of Japan's Grant Aid scheme in Ministry of Energy and Minerals	① Survey of the 33 kV distribution line route (Ilala substation ~ Muhimbili substation) ② Request for estimation of local labor expenses and materials, etc.	Dar es salaam	
18	Mar. 13	Wed.	① Geothermal study workshop (AIDB)	① Survey of the 33 kV distribution line route (Mwananyamala substation ~ Makumbusho substation) ② Supervise the survey of natural conditions (Muhimbili substation) ③ Supervise the survey of natural conditions (Jangwani Beach substation) ④ Discussion in Tanzania Bureau	Dar es salaam	

No.	Date	Day	Contents of the Survey		Accommodation	
			JICA members	Transmission and Distribution Facilities		Ilala substation and Other Substations
				Protection Coordination Design, Construction and Procurement Planning, Facilities Planning, Social and Environmental Considerations		
19	Mar. 14	Thu.	①JICA member 2 ; Trip (Dar es salaam → Dubai)	①Sorting of the collected materials ①Survey of Ubungo substation	Dar es salaam	
				①Supervise the survey of natural conditions (Muhimbili substation and Msasani substation) ②Visit to TANROADS ③Hearing survey of Wildlife Conservation Society Tanzania (WCST)		
20	Mar. 15	Fri.	①JICA members 2 ; Trip (Dubai → Narita)	①Discussion with TANESCO (Ubungo substation)      ①Sorting of the collected materials	Dar es salaam	
				①Supervise the survey of natural condition (Msasani substation) ②Sorting of the collected materials		
21	Mar. 16	Sat.		①Survey Team discussions, sorting of the collected materials, market survey in Dar es Salaam ②Supervise the survey of natural condition (Mwananyamala substation and Jangwani Beach substation) ③Request for estimation of local labor expenses and materials, etc.	Dar es salaam	
22	Mar. 17	Sun.		①Survey Team discussions, sorting of the collected materials, market survey in Dar es Salaam ②Supervise the survey of natural condition (Muhimbili substation and Jangwani Beach substation)	Dar es salaam	
23	Mar. 18	Mon.		①Survey of the 33 kV distribution line route (Makumbusho substation ~ Mwananyamala substation)      ①Survey of Makumbusho substation, Ilala substation and Muhimbili substation	Dar es salaam	
				①Supervise the survey of natural conditions (Mwananyamala substation and Msasani substation) ②Discussion with TANESCO (Environmental Department)		
24	Mar. 19	Tue.		①Survey of the 33 kV distribution line route (Oysterbay substation ~ Msasani substation)      ①Survey of Msasani substation	Dar es salaam	
				①Supervise the survey of natural conditions (Mwananyamala substation and Muhimbili substation) ②Environmental site survey with subcontractors		
25	Mar. 20	Wed.		①Survey of the 33 kV distribution line route (Muhimbili substation ~ New City Center substation)      ①Sorting of the collected materials	Dar es salaam	
				①Supervise the survey of natural conditions (Msasani substation) ②Sorting of the collected materials		
26	Mar. 21	Thu.		①Sorting of the collected materials      ①Sorting of the collected materials ②Market survey in Dar es Salaam (JICA)	Dar es salaam	
				①Supervise the survey of natural conditions (Mwananyamala substation), Arrangement plan (Muhimbili substation and Ilala substation) ②Discussion with TANESCO (Environmental & Transmission Department)		
27	Mar. 22	Fri.		①Survey of the 33 kV distribution line route (Makumbusho substation ~ Msasani substation)      ①Sorting of the collected materials	Dar es salaam	
				①Supervise the survey of natural conditions (Mwananyamala substation), Arrangement plan (Jangwani Beach substation) ②Discussion with TANESCO (Environmental & Transmission Department)		
28	Mar. 23	Sat.		①Survey Team discussions, sorting of the collected materials, market survey in Dar es Salaam ②Discussion with local contractor	Dar es salaam	
29	Mar. 24	Sun.		①Survey Team discussions, sorting of the collected materials, market survey in Dar es Salaam ②Chief Consultant ; Trip {Narita 22:00 → Dubai 5:00 by JL5095} ③Survey team (Social and Environmental Considerations) ; Trip {Dar es salaam 16:45 → Dubai 23:20 by EK726}	Dar es salaam	
30	Mar. 25	Mon.		①Survey of the 33 kV distribution line route (Tegeta substation ~ Jangwani Beach substation)      ①Sorting of the collected materials ②Discussion with Tanesco (Transmission department & Substation department)	Dar es salaam	
				①Supervise the survey of natural conditions (Jangwani Beach substation) ②Survey of market price (Ilala and Kariakoo) ③Chief Consultant ; Trip {Dubai 10:15 → Dar es salaam 14:55 by EK725} ④Survey team (Social and Environmental Considerations) ; Trip {Dubai 2:55 → Narita 17:20 by JL5096}	Dar es salaam	
31	Mar. 26	Tue.		①Preparation of Field Report      ①Preparation of Field Report	Dar es salaam	
				①Supplementary survey of each substation, distribution lines and other items ②Survey of market price (Ilala and Kariakoo) ③Preparation of Field Report ④Survey team (Protection Coordination Design) ; Trip {Dar es salaam 16:45 → Dubai 23:20 by EK726}	Dar es salaam	
32	Mar. 27	Wed.		①Summary of Field Survey results, preparation of Field Report ②Supplementary survey of each substation, distribution lines and other items ③Survey team (Protection Coordination Design) ; Trip {Dubai 2:55 → Narita 17:20 by JL5096}	Dar es salaam	
33	Mar. 28	Thu.		①Survey of the 33 kV distribution line route (Makumbusho substation ~ Oysterbay substation)      ①Preparation of Field Report	Dar es salaam	
				①Summary of Field Survey results, preparation of Field Report ②Collection of questionnaires	Dar es salaam	
34	Mar. 29	Fri.		①Summary of Field Survey results, preparation of Field Report ②Survey Team discussions, sorting of the collected materials ③Survey team (Substation Facilities 1) ; Trip {Dar es salaam 16:45 → Dubai 23:20 by EK726}	Dar es salaam	
35	Mar. 30	Sat.		①Survey Team discussions, sorting of the collected materials ②Supplementary survey of each substation, distribution lines and other items ③Survey team (Substation 1) ; Trip {Dubai 2:55 → Narita 17:20 by JL5096}	Dar es salaam	
36	Mar. 31	Sun.		①Survey Team discussions, sorting of the collected materials ②Supplementary survey of each substation, distribution lines and other items	Dar es salaam	
37	Apr. 1	Mon.		①Preparation of Field Report ②Summary of Field Survey results	Dar es salaam	
38	Apr. 2	Tue.		①Discussion and explanation of the Field Report at TANESCO ②Summary of Field Survey results	Dar es salaam	
39	Apr. 3	Wed.		①Discussion and explanation of the Field Report at TANESCO ②Summary of Field Survey results	Dar es salaam	
40	Apr. 4	Thu.		①Acquisition of approval for the Field Report and courtesy calls to TANESCO ②Reporting to the Japanese Embassy and JICA Tanzania Office	Dar es salaam	
41	Apr. 5	Fri.		①Trip {Dar es salaam 16:45 → Dubai 23:20 by EK726}	Flight	
42	Apr. 6	Sat.		①Trip {Dubai 2:50 → Narita 17:35 by JL5096}		

## (2) Second Field Survey

No.	Date	Day	Contents of the Survey	Accommodation
1	May 11	Sat.	① Trip {Narita 22:00 →Dubai 4:15 by JL5095}	Flight
2	May 12	Sun.	① Trip {Dubai 10:50 →Dar es salaam 15:15 by EK725}	Dar es salaam
3	May 13	Mon.	① Discussion with TANESCO (explanation of survey schedule and objectives of the additional survey) ② Site Survey at Ilala substation ③ Discussion with local consultant on final report for soil investigation and topographic survey	Dar es salaam
4	May 14	Tue.	① Discussion with Hifab/Finnish Project ② Discussion with WB/TEDAP(@A909) ③ Discussion with TANESCO (Transmission and Substations) ④ Site Survey at Ubungo substation ⑤ Site Survey at Songas IPP (Transmission)	Dar es salaam
5	May 15	Wed.	① Discussion with TANESCO (Ilala Regional Office)	Dar es salaam
6	May 16	Thu.	① Discussion with SWECO/AfDB Project ② Discussion with TANESCO (Environmental and Social Considerations)	Dar es salaam
7	May 17	Fri.	① Coordination Meeting among the stake holders ② Site Survey at Tegeta S/S	Dar es salaam
8	May 18	Sat.	① Sorting of the collected documents ② Preparation of Draft Technical Memorandum	Dar es salaam
9	May 19	Sun.	① Sorting of the collected documents ② Preparation of Draft Technical Memorandum	Dar es salaam
10	May 20	Mon.	① Discussion with TANESCO ② Discussion with TANESCO (Distribution)	Dar es salaam
11	May 21	Tue.	① Discussion with TANESCO (Ilala Regional Office)	Dar es salaam
12	May 22	Wed.	① Explanation of Draft Technical Memorandum to TANESCO ② Discussion with TANESCO (Ilala Regional Office)	Dar es salaam
13	May 23	Thu.	① Signing on Technical Memorandum ② Reporting to JICA Tanzania Office	Dar es salaam
14	May 24	Fri.	① Trip {Dar es salaam 16:45 → Dubai 23:20 by EK726}	Flight
15	May 25	Sat.	① Trip {Dubai 2:50 → Narita 17:35 by JL5096}	



### (3) Third Field Survey

No.	Date	Day	Contents of the Survey		Accommodation
			JICA members (Mr. T Hayashi, Mr. G Saito)	Consultant Members (Mr. M Nishikawa, Mr. M Abe, Mr. K Sakemura Mr. M Nakagawa, Mr. K Kurohane)	
1	Sep. 28	Sat.		①Trip from Narita (22:00) to Dubai (03:50+1) by JAL 5095	Flight
2	Sep. 29	Sun.	①Trip from Haneda (01:30) to Dubai (07:05) by EK 313 ②Trip from Dubai (10:50) to Dar es Salaam (15:15) by EK 725	①Trip from Dubai (10:50) to Dar es Salaam (15:15) by EK 725	Dar es Salaam
3	Sep. 30	Mon.	①Meeting with JICA Tanzania office ②Courtesy Call to Ministry of Energy and Minerals (MEM) (Explanation of outline projects and Draft M/D) ③Courtesy Call to TANESCO and Submission/Explanation of Draft Final Report (DFR) and Technical Specifications of Equipment and Materials, Explanation of draft M/D		Dar es Salaam
4	Oct. 01	Tue.	①Explanation of DFR and Technical Specifications, Modification of draft M/D ②Site visit to Ilala and Ubungo substations		Dar es Salaam
5	Oct. 02	Wed.	①Explanation of DFR and Technical Specifications ②Modification of draft M/D with MEM and TANESCO ③Supplementary site survey		Dar es Salaam
6	Oct. 03	Thu.	①Explanation of DFR and Technical Specifications ②Modification of draft M/D with MEM and TANESCO ③Supplementary site survey		Dar es Salaam
7	Oct. 04	Fri.	①Modification of draft M/D with MEM & TANESCO ②Modification of draft Technical Memorandum with MEM & TANESCO		Dar es Salaam
8	Oct. 05	Sat.	①Internal meeting and arranging the data & information collecting ②Supplementary site survey		Dar es Salaam
9	Oct. 06	Sun.	①Internal meeting and arranging the data & information collecting ②Supplementary site survey		Dar es Salaam
10	Oct. 07	Mon.	①Modification of draft M/D and draft Technical Memorandum with MEM & TANESCO ②Supplementary site survey		Dar es Salaam
11	Oct. 08	Tue.	①Reporting to the Embassy of Japan in Tanzania		Dar es Salaam
			②Supplementary site survey	②Trip from Dar es Salaam (16:45) to Dubai (23:20) by EK 726	
12	Oct. 09	Wed.	①Trip from Dar es Salaam (16:45) to Dubai (23:20) by EK 726	①Trip from Dubai (02:50) to Narita (17:25) by JAL 5096	Flight
13	Oct. 10	Thu.	①Trip from Dubai (02:50) to Narita (17:35) by EK318		

[Remark]:

JICA: Japan International Cooperation Agency

TANESCO: Tanzania Electric Supply Company

**Appendix 3    List of Parties Concerned  
in the Recipient Country**

### **3. List of Parties Concerned in the Recipient Country**

#### **Ministry of Energy and Minerals (MEM)**

Mr. Eliakim C. Maswi	Permanent Secretary
Eng. Innocent G. Luoga	Assistant Commissioner Energy
Mr. James Andilile	Assistant Commissioner for Energy and Development
Eng. Salimm Inegeja	Senior Energy Engineer
Mr. Florian Assenga	Senior Human Resources Officer
Mr. Tulimbumi Abel	Legal Officer
Eng. Edson W. Ngabo	Energy Engineer
Eng. Joram Kengete	Energy Engineer
Eng. Erick Rugabera	Energy Engineer

#### **Tanzania Electric Supply Company Ltd. (TANESCO) Ubungo Head Office**

Eng. Felchesmi J. Mramba	Managing Director
--------------------------	-------------------

#### **Distribution & Customer Services Department**

Eng. Sophia S. Mgonja (Ms.)	Ag. Deputy Managing Director (D&CS)
Eng. Nicholaus Kamoleka	Senior Manager Sales and Marketing
Eng. Mahende Mugaya	Senior Zonal Manager DAR & Coast
Eng. Robert M. Semsella	Manager Electrification
Eng. Theodory Bayona	Manager Planning & Design
Eng. Simon Kihiyu	Manager Operation
Eng. Benedict V. Lyaruu	Zonal Principal Distribution Engineer
Eng. Mposheleye Z. Mwasenga	Principal Engineer Revenue Protection
Eng. Fadhili Kalissa	Principal Engineer GIS
Eng. Clara N. Simbila (Ms.)	Principal Engineer Distribution Planning
Eng. Richard Mhongole	Senior Engineer
Eng. Elisa M. Kirimbo	Distribution Engineer
Eng. James J. Kivugo	Commercial Engineer

#### **Transmission Department**

Mr. Kahitwa M. Bishaija	Ag. Senior Manager Transmission.
Eng. Mosha T. Izahaki	Manager Transmission Substations
Mr. Amon K. Gamba	Principal Engineer Preventive Maintenance
Mr. Zakaria Mgalamaa	Principal Protection Engineer
Mr. Walter Jacob	Ag. Principal Light Current
Mr. Ayubu Mwaibindi	Senior Protection Engineer
Mr. Stanley Shayo	Senior Engineer Transmission

Mr. Burhani Mvungi  
Mr. Regina Myulla

Senior Electrical Technician  
Light current Engineer

### **Investments Department**

Eng. Decklan P. Mhaiki  
Eng. Mercy S. Baregu  
Eng. Emmanuel Manirabona  
Haika Patrick (Ms.)

Deputy Managing Director (Investment)  
Senior Manager Projects  
Manager Projects (T&D)  
Project Engineer

### **Grid Operations Department**

Eng. Christian M.A.Msyani  
Mr. Philipo Lalisa-Shifi

Ag. Deputy Managing Director Transmission  
System Controller Engineer

### **Research and Environments Department**

Eng. Hamdun R. Mansur  
Mr. John Lazimah  
Mr. Hamisi Boby  
Ms. Brigita Sylvester

Manager Environment  
Principal Environmental Engineer  
Principal Land Surveyor  
Environmental Officer

### **Ilala regional office**

Eng. Athanasius Nangali  
Eng. Eng. A. H. Mmingna  
Mr. Frank Mwatuka  
Ms. Mary Kabakuzi  
Mr. Charly Rengi

Regional Manager  
Principal Engineer  
System Control Supervisor  
Planning Engineer  
Land Surveyor

### **Kinondoni North regional office**

Mr. Raymond Seya  
Mr. Herini Mhina  
Mr. David Edwin Mwakambonja  
Mr. Bakari Sekuninga

Regional Manager  
Principal Engineer  
Land Surveyor  
Planning Engineer

### **Kinondoni South regional office**

Mr. Gasper Msigwa

Regional Manager

### **Temeke regional office**

Mr. Richard Mallamia

Regional Manager

**Ubungo substation**

Mr. Michael Ngonyani  
Eng. Gerald Amatta

Ag. Manager Grid Operations  
Manager Power System Control

**TANESCO Training School**

Mr. Peter Tarimo

Senior Training Officer

**Makumbusho substation**

Mr. Patrick Singano  
Mr. Charles Makweta  
Mr. Melesi P.Semali

System supervisor  
System operator  
Temporary System operator

**Tegeta substation**

Mr. Said B. Msuya

Station Supervisor

**Tanzania National Roads Agency (TANROADS - Dar es Salaam)**

Mr. G. Kombe  
Mr. E. Mwashu

TANROADS (Dar es Salaam regional office)  
TANROADS (Dar es Salaam regional office)

**Institute of Resource Assessment (IRA) -University of Dar es Salaam**

Prof. H. Sosovele  
Mr. Florian Silangwa  
Mr. Beatrice Mchom  
Mr. Riziki Prosper

Professor  
Consultant  
Consultant  
Accountant

**Wildlife Conservation Society Tanzania (WCST)**

Mr. Paul Nnyiti  
Mr. Nsajigwa G. Kyonjola

Senior Conservation Officer  
Bird life officer

**Tanzania Bureau of Standards (TBS)**

Mr. Nasra Hussein  
Mr. Liberatus Kalinga

Standard Officer Environment  
Standard Officer Electricity

**FICHTNER GmbH**

Mr. A. Zafer Ozgur

Res. S. Manager

**AFRICAN DEVELOPMENT BANK**

Ms. Stella Mandago

Senior Energy Officer

**SWECO International AB**

Mr. Leif Andersson	Chief Management Consultant
--------------------	-----------------------------

**Hifab**

Mr. Juhani Antikainen	Chief Technical Advisor, Dar es Salaam Power Supply Improvement Project
Mr. Kent Strand	Project Manager

**ELTEL Networks TE AB**

Mr. Anders Axberg	Project Manager (Distribution Projects in Dar Es Salaam)
Mr. Bengt Rostlund	Manager

**Tanzania Meteorological Agency**

Janet Loningo (Ms.)	Acting Manager climate change section
---------------------	---------------------------------------

**Tanzania Port Authority**

Mr. Joseph I. Msaki	Operatios Manager
---------------------	-------------------

**Embassy of Japan in Tanzania**

Mr. Masaki OKADA	Ambassador
Mr. Tomonobu SATO	First Secretary

**JICA Tanzania Office**

Mr. Yasunori ONISHI	Chief Representative
Mr. Yukihide KATSUTA	Ex-Chief Representative
Mr. Hajime IWAMA	Senior Representative
Mr. Shin MARUO	Representative
Mr. Hiroyuki SHIMAKAWA	Representative

**TANESCO – JICA Project for Capacity Development of Efficient Distribution and Transmission Systems**

Mr. Jiro NAGASAKA	Chief Advisor
Mr. Tsunehisa MIZUNO	Takaoka Engineering Co., Ltd.
Mr. Akahori SATOSHI	Takaoka Electric MFG. Co., Ltd.
Mr. Katsuhisa YAMAMOTO	Takaoka Electric MFG. Co., Ltd.
Mr. Yasuhiro TAMURA	Kinden Corporation
Mr. Masanori NIIGO	Kinden Corporation
Ms. Akiko SUZUKI	Takaoka Engineering Co., Ltd.
Mr. Hisao ODAGIRI	Coordinator

## **Appendix 4    Minutes of Discussions**

**Minutes of Discussions**  
**of the Preparatory Survey on the Project for**  
**Rehabilitation of Substations and Construction of New Lines and Substations**  
**in Dar es Salaam in the United Republic of Tanzania**

In response to the request from the Government of the United Republic of Tanzania (hereinafter referred to as "Tanzania"), the Japan International Cooperation Agency (hereinafter referred to as "JICA"), in consultation with the Government of Japan, decided to conduct a Preparatory Survey (hereinafter referred to as "the Survey") on the Project for Rehabilitation of Substations and Construction of New Lines and Substations in Dar es Salaam (hereinafter referred to as "the Project").

JICA sent to Tanzania the Preparatory Survey Team (hereinafter referred to as "the Team"), headed by Mr. Hiroshi Sumiyoshi, Division manager, Energy and Mining Division 2, Industrial Development and Public Policy Department, JICA. The Team is scheduled to stay in Tanzania from February 25<sup>th</sup> to April 5<sup>th</sup> 2013.

The Team held discussions with the officials of Tanzanian authorities concerned (hereinafter referred to as "the Tanzanian side"). In the course of the discussions, both sides have confirmed the main items described in the sheets attached hereto.


Dar es Salaam, Tanzania  
March 7<sup>th</sup>, 2013

住吉 浩

大


---

Mr. Hiroshi Sumiyoshi  
Team Leader  
Preparatory Survey Team  
Japan International Cooperation Agency



---

Innocent G. Luoga  
(Assistant commissioner for Energy)  
Ministry of Energy and Minerals



---

Felchesmi J. Mramba  
(Acting Managing Director)  
Tanzania Electric Supply Company Limited



## ATTACHMENT

### 1. Objective of the Project

The objective of the Project is to reinforce power transmission and distribution networks in Dar es Salaam.

### 2. Project Site

The Project sites based on the request from the Tanzanian side are located in Dar es Salaam as shown in Annex-1. Transmission and distribution lines will be newly constructed and substations will be constructed, expanded and reinforced in Dar es Salaam city.

### 3. Responsible and Implementing Organizations

- (1) The responsible organization is Ministry of Energy and Minerals (MEM).
- (2) The implementing organization is Tanzania Electric Supply Company Limited (TANESCO).
- (3) The organization structures of MEM and TANESCO are shown in Annex-2 and Annex-3.

### 4. Items Requested by the Tanzanian side

Main components and priority order requested by the GoT to GoJ are shown in Table below.

Table Outline of the Requested Components

	Components
Ilala substation (132/33/11kV) (Reinforcement)	<ul style="list-style-type: none"> <li>• Reinforcement of Ilala substation</li> <li>• Reinforcement of existing 132kV transmission line (7.5km: from Ilala substation to Ubungu substation)</li> </ul>
Msasani substation (33/11kV) (Expansion)	<ul style="list-style-type: none"> <li>• Expansion of Msasani substation</li> <li>• Expansion of 33kV distribution line (approximately 7.9km: from Msasani substation to Makumbusho substation)</li> </ul>
Muhimbili substation (33/11kV) (New construction)	<ul style="list-style-type: none"> <li>• Construction of Muhimbili substation</li> <li>• Construction of 33kV distribution line (approximately 2km: from Muhimbili substation to Ilala substation)</li> </ul>
Mwananyamala substation (33/11kV) (New construction)	<ul style="list-style-type: none"> <li>• Construction of Mwananyamala substation</li> <li>• Construction of 33kV distribution line (approximately 1.3km: from Mwananyamala substation to Makumbusho substation)</li> </ul>
Jangwani Beach substation (33/11kV) (New construction)	<ul style="list-style-type: none"> <li>• Construction of Jangwani Beach substation</li> <li>• Construction of 33kV distribution line (approximately 6.6km: from Jangwani Beach substation to Tegeta substation)</li> </ul>

As a result of discussions, requested components have been identified as follows:

- Reinforcement of the Ilala substation.
- Reinforcement of existing 132kV transmission line (7.5km: from Ilala substation to Ubungu substation)
- Construction/ expansion of substations (Muhimbili, Msasani, Mwananyamala, Jangwani Beach) and associated distribution lines.

JICA will assess the appropriateness and the priority of the requested components from the viewpoint of necessity and relevance as Japan's Grant Aid scheme, and will report the findings to the Government of Japan. The scope of the Project for the further analysis will be confirmed after consultation with the Government of Japan.

HS

hugel

J

### 5. Japan's Grant Aid Scheme

- (1) The Tanzanian side has understood Japan's Grant Aid Scheme explained by the Team as described in Annex-4.
- (2) The Tanzanian side will take the necessary measures, as described in Annex-6, for smooth implementation of the Project.

### 6. Schedule of the Preparatory Survey

The Team will continue the Survey in Tanzania until 5<sup>th</sup> April 2013 and report the result to the Government of Japan. Based on the result of the Survey, JICA will prepare a Draft Final Report in English and send a mission around September 2013 to explain the contents of the Draft Final Report.

### 7. Environmental and Social Considerations

- (1) The Tanzanian side agreed to ensure access to the project sites and undertake expropriation if necessary in order to secure the sites.
- (2) The Tanzanian side agreed to conduct the required environmental works, and obtain approval on environmental clearance for implementation of the Project.
- (3) The Tanzanian side agreed to comply with the JICA Guidelines for Environmental and Social Considerations (hereinafter referred to as "JICA Guidelines") as well as laws and regulations in Tanzania, and was requested to prepare Environmental Checklist and Monitoring Form which are designated by JICA Guidelines for an outline design.
- (4) The Tanzanian side agreed to make necessary arrangements with concerned governmental organizations in order to secure funding for and execution of the above environmental matters in a schedule as required for smooth execution of the Project.
- (5) The Tanzanian side understands that according to "*the Environmental Impact Assessment and Audit Regulations, 2005*" which is made under "*the Environmental Management Act, No.20 of 2004*", the Project is on a mandatory list (the First Schedule, Mandatory list A, 7-(1)) requiring EIA either a full EIA or developing an Environmental and Social Management Plan (ESMP) depending on the screening process. **TANESCO** shall secure a necessary budget for EIA and undertake it, and obtain the Environmental Certificate approved by the Minister **by the end of November 2013**.
- (6) At the moment, around 70 people would be expected to be relocated for the Project. The Tanzanian side understands that the Team will assist TANESCO in identifying project affected people and developing an abbreviated "Resettlement Action Plan (ARAP)". **TANESCO** shall implement the ARAP **by the end of January 2014**. TANESCO will be responsible to pay for compensation on new settlement.
- (7) **TANESCO** shall obtain land use permits and complete land acquisition necessary for the Project **by the end of November 2013**.
- (8) **TANESCO** shall obtain necessary permits from TANROADS or Municipality **by the end of August 2013** to construct new distribution lines within the road reserve.
- (9) Based on the section 178 of "*the Environmental Management Act, 2004*" and the Section 17 of "*the Environmental Impact Assessment and Audit Regulations, 2005*", **TANESCO** shall identify stakeholders related to this project and stakeholder consultations during the process of conducting Environmental Impact Assessment study.
- (10) Since the Environmental Impact Assessment process has not been done yet for this project, the Tanzanian side understands the abbreviated Resettlement Plan (ARAP) might need to be amended based on the results of Environmental Impact Assessment study.

H/S

lujala

J

- (11) The Tanzanian side agreed that the Team will involve a certified valuer in developing the abbreviated Resettlement Action Plan to make it efficient.
- (12) The Tanzanian side agreed that the team will be provided information of valuation status for the project site by TANESCO in order to develop an abbreviated Resettlement Action Plan.

### 8. Other Relevant Issues

#### (1) Status of the Survey

- 1) The Team explained that the purpose of the Survey is to collect necessary information and data including IPPs for evaluating the relevance, appropriateness and urgency of the Project and for analyzing power system in Dar es Salaam, and also to identify the priority of the requested components as well as other issues to be cleared for implementation of the Project.
- 2) The Tanzanian side agreed to share all necessary information and data with the Team.

#### (2) Coordination among relevant donors and agencies

The Team requested the Tanzanian side to ensure coordination among relevant donors and agencies for smooth implementation of the Project and the Tanzanian side agreed to it.

#### (3) Counterpart Personnel

The Team requested the Tanzanian side that necessary number of counterpart personnel shall be assigned to the Team and necessary arrangements with related organizations be made during the Survey in Tanzania and the Tanzanian side agreed to it.

#### (4) Operation and maintenance (O&M) of facilities

As it is quite important that TANESCO secures proper O&M of Equipment, facilities, tools, etc. that may be provided under the Japanese Grant Aid Scheme, the Team requested the Tanzanian side to take the maximum opportunities from the on-going JICA Technical Cooperation Project in order to acquire necessary knowledge and skills. The Tanzanian side agreed to it.

(End)

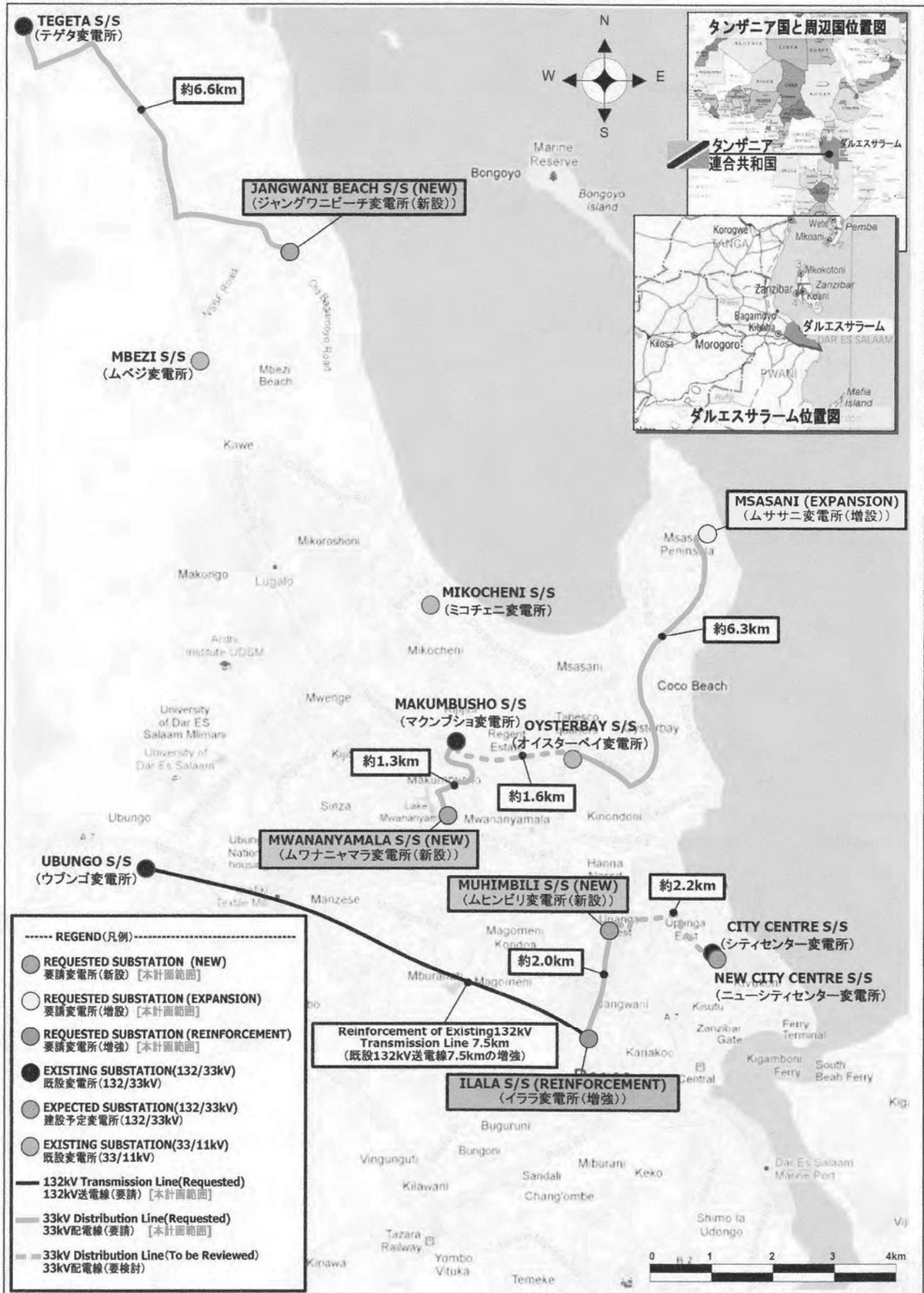
#### <List of Annex>

- |         |   |
|---------|---|
| Annex-1 | Location of the Requested Project Sites                   |
| Annex-2 | Organization Structure of Ministry of Energy and Minerals |
| Annex-3 | Organization Structure of TANESCO (head office)           |
| Annex-4 | Japan's Grant Aid   |
| Annex-5 | Flow Chart of Japan's Grant Aid Procedures                |
| Annex-6 | Major Undertakings to be taken by Each Government         |

*Handwritten mark*

*Handwritten signature*

*Handwritten mark*

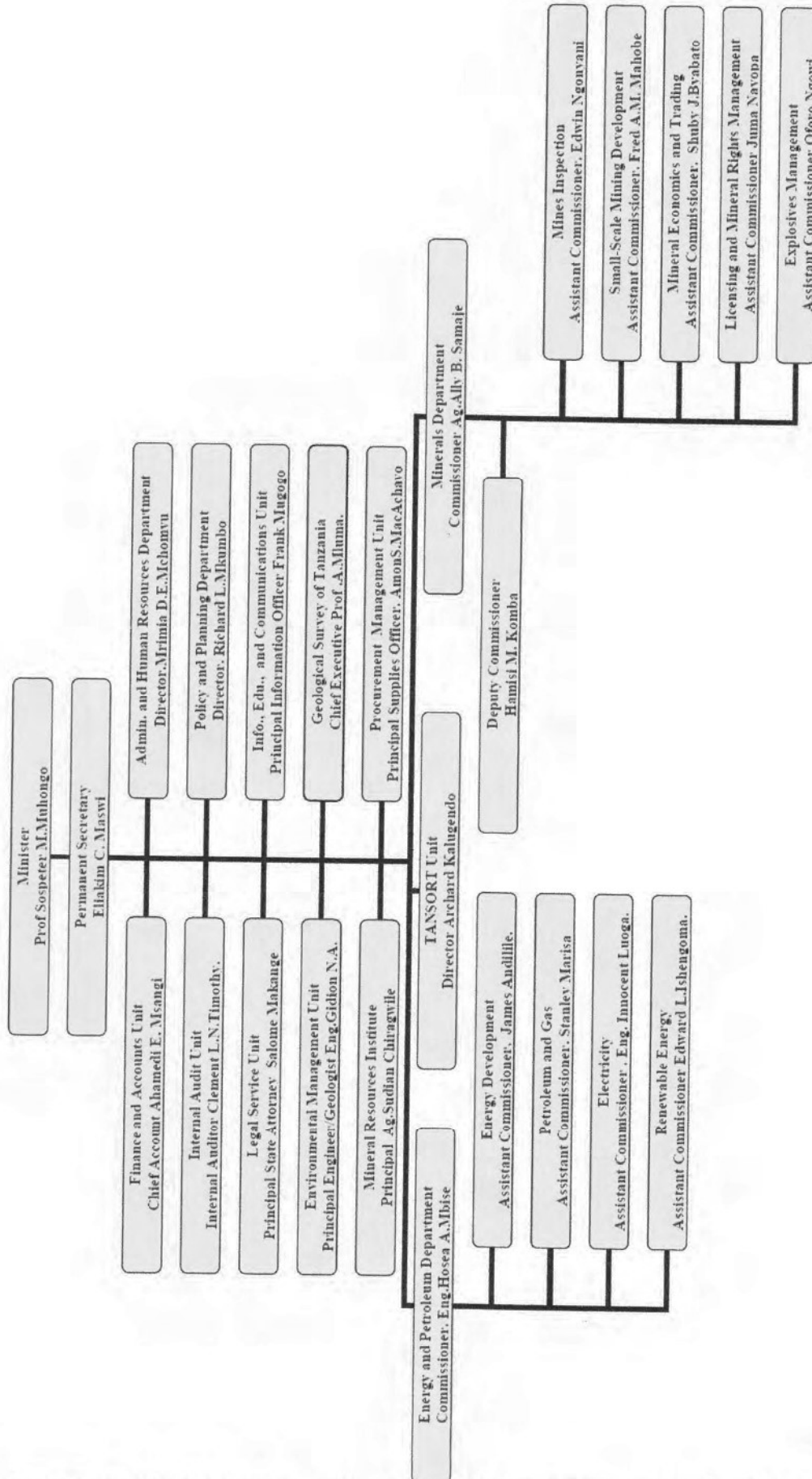


LOCATION OF THE REQUESTED PROJECT SITES

HS

Luqul-y

Q



ORGANIZATION STRUCTURE OF MINISTRY OF ENERGY AND MINERALS

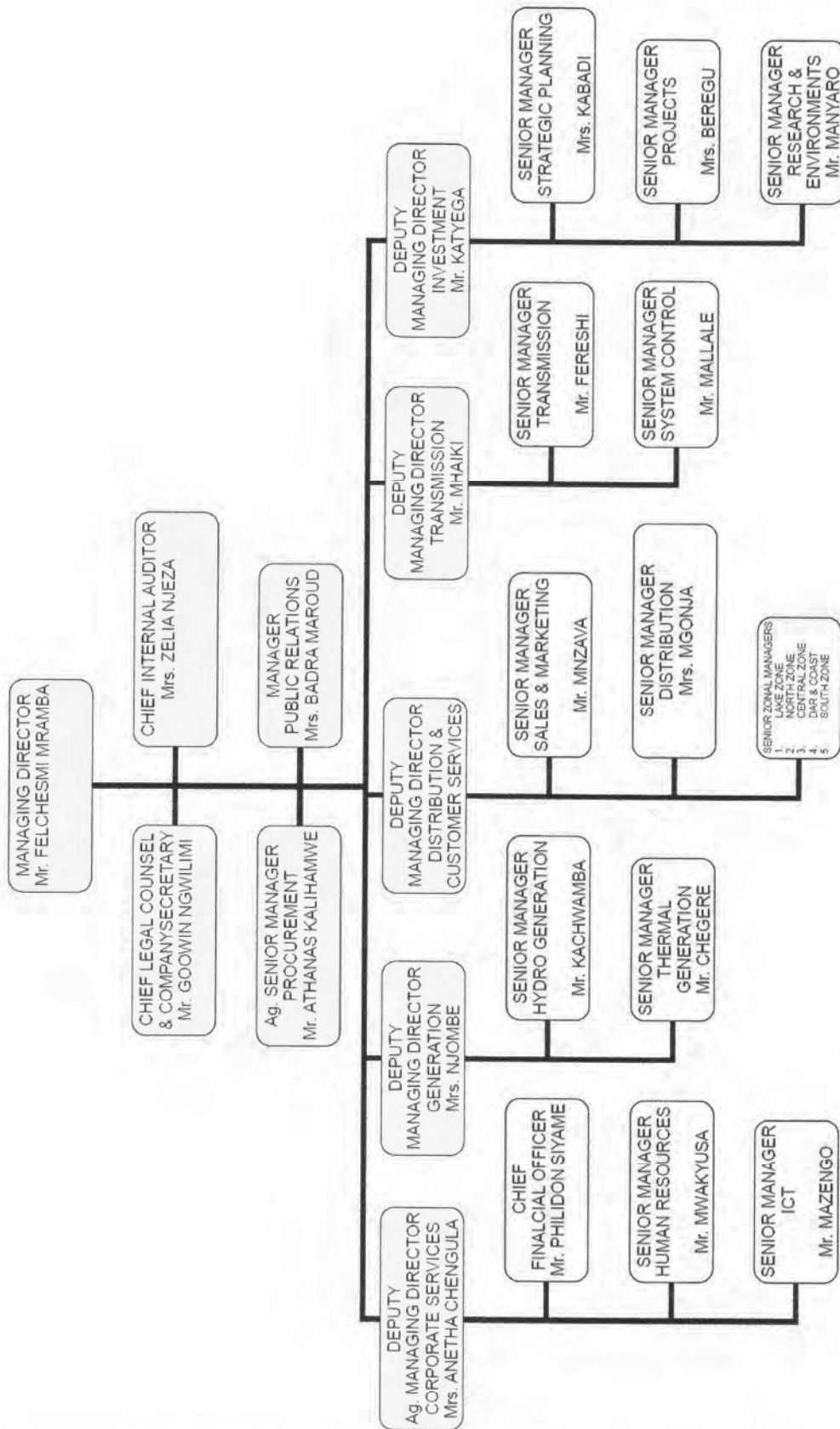
HS

huzalx

9

AS OF DECEMBER, 2012

TANESCO ORGANIZATION CHART  
<EXECUTIVE MANAGEMENT>



ORGANIZATION STRUCTURE OF TANESCO (HEAD OFFICE)

HS

hgs

9

## JAPAN'S GRANT AID

The Government of Japan (hereinafter referred to as "the GOJ") is implementing the organizational reforms to improve the quality of ODA operations, and as a part of this realignment, a new JICA law was entered into effect on October 1, 2008. Based on the law and the decision of the Government of Japan (hereinafter referred to as "the GOJ"), JICA has become the executing agency of the Grant Aid for General Projects, for Fisheries and for Cultural Cooperation, etc.

The Grant Aid is non-reimbursable fund to a recipient country to procure the facilities, equipment and services (engineering services and transportation of the products, etc.) for economic and social development of the country under principles in accordance with the relevant laws and regulations of Japan. The Grant Aid is not supplied through the donation of materials as such.

### 1. Grant Aid Procedures

The Japanese Grant Aid is conducted as follows-

- Preparatory Survey (hereinafter referred to as "the Survey")
  - The Survey conducted by JICA
- Appraisal & Approval
  - Appraisal by The GOJ and JICA, and Approval by the Japanese Cabinet
- Determination of Implementation
  - The Notes exchanged between the GOJ and a recipient country
- Grant Agreement (hereinafter referred to as "the G/A")
  - Agreement concluded between JICA and a recipient country
- Implementation
  - Implementation of the Project on the basis of the G/A

### 2. Preparatory Survey

#### (1) Contents of the Survey

The aim of the Survey is to provide a basic document necessary for the appraisal of the Project by JICA and the GOJ. The contents of the Survey are as follows:

- Confirmation of the background, objectives, and benefits of the Project and also institutional capacity of agencies concerned of the recipient country necessary for the implementation of the Project.
- Evaluation of the appropriateness of the Project to be implemented under the Grant Aid Scheme from a technical, financial, social and economic point of view.
- Confirmation of items agreed on by both parties concerning the basic concept of the Project.
- Preparation of a basic design of the Project.
- Estimation of costs of the Project.

The contents of the original request by the recipient country are not necessarily approved in their initial form as the contents of the Grant Aid project. The Basic Design of the Project is confirmed considering the guidelines of the Japan's Grant Aid scheme.

JICA requests the Government of the recipient country to take whatever measures are necessary to ensure its self-reliance in the implementation of the Project. Such measures must be guaranteed even though they may fall outside of the jurisdiction of the organization in the recipient country actually implementing the Project. Therefore, the implementation of the Project is confirmed by all relevant organizations of the recipient country through the Minutes of Discussions.

#### (2) Selection of Consultants

For smooth implementation of the Survey, JICA uses (a) registered consulting firm(s). JICA selects (a) firm(s) based on proposals submitted by interested firms.

HS

Luzal

Q

(3) Result of the Survey

The Report on the Survey is reviewed by JICA, and after the appropriateness of the Project is confirmed, JICA recommends the GOJ to appraise the implementation of the Project.

**3. Japan's Grant Aid Scheme**

(1) The E/N and the G/A

After the Project is approved by the Cabinet of Japan, the Exchange of Notes (hereinafter referred to as "the E/N") will be signed between the GOJ and the Government of the recipient country to make a plea for assistance, which is followed by the conclusion of the G/A between JICA and the Government of the recipient country to define the necessary articles to implement the Project, such as payment conditions, responsibilities of the Government of the recipient country, and procurement conditions.

(2) Selection of Consultants

The consultant firm(s) used for the Survey will be recommended by JICA to the recipient country to also work on the Project's implementation after the E/N and the G/A, in order to maintain technical consistency.

(3) Eligible source country

Under the Japanese Grant Aid, in principle, Japanese products and services including transport or those of the recipient country are to be purchased. When JICA and the Government of the recipient country or its designated authority deem it necessary, the Grant Aid may be used for the purchase of the products or services of a third country. However, the prime contractors, namely, constructing and procurement firms, and the prime consulting firm are limited to "Japanese nationals".

(4) Necessity of "Verification"

The Government of the recipient country or its designated authority will conclude contracts denominated in Japanese yen with Japanese nationals. Those contracts shall be verified by JICA. This "Verification" is deemed necessary to secure accountability to Japanese taxpayers.

(5) Major undertakings to be taken by the Government of the Recipient Country

In the implementation of the Grant Aid Project, the recipient country is required to undertake such necessary measures as Annex-5.

(6) "Proper Use"

The Government of the recipient country is required to maintain and use the facilities constructed and the equipment purchased under the Grant Aid properly and effectively and to assign staff necessary for this operation and maintenance as well as to bear all the expenses other than those covered by the Grant Aid.

(7) "Export and Re-export"

The products purchased under the Grant Aid should not be exported or re-exported from the recipient country.

(8) Banking Arrangements (B/A)

- a) The Government of the recipient country or its designated authority should open an account in the name of the Government of the recipient country in a bank in Japan (hereinafter referred to as "the Bank"). JICA will execute the Grant Aid by making payments in Japanese yen to cover the obligations incurred by the Government of the recipient country or its designated authority under the Verified Contracts.
- b) The payments will be made when payment requests are presented by the Bank to JICA

H5

Wang

Q



under an Authorization to Pay (A/P) issued by the Government of the recipient country or its designated authority.

(9) Authorization to Pay (A/P)

The Government of the recipient country should bear an advising commission of an Authorization to Pay and payment commissions to the Bank.

(10) Social and Environmental Considerations

A recipient country must ensure the social and environmental considerations for the Project and must follow the environmental regulation of the recipient country and JICA socio-environmental guideline.

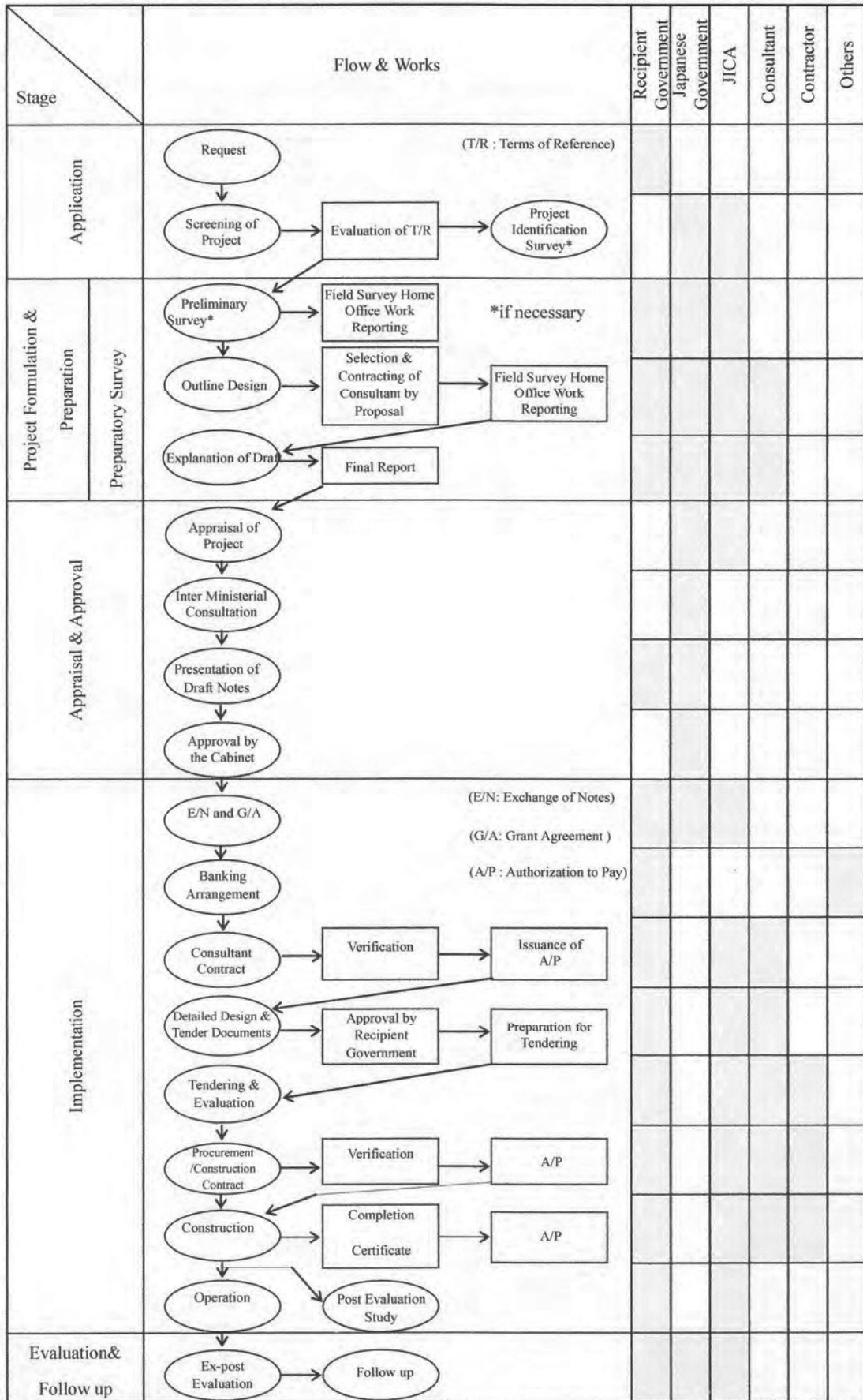
(End)

HS

longer

Q

**Flow Chart of Japan's Grant Aid Procedures**



7/5

*Handwritten signature*

*Handwritten mark*

## Major Undertakings to be taken by Each Government

No.	Items	To be covered by Grant Aid	To be covered by Recipient Side
1	to secure lots of land necessary for the implementation of the Project and to clear the sites;		●
2	To construct the following facilities		
	1) The building	●	
	2) The gates and fences in and around the site		●
	3) The parking lot	●	
	4) The road within the site	●	
	5) The road outside the site (including Access road)		●
3	To provide facilities for distribution of electricity, water supply and drainage and other incidental facilities necessary for the implementation of the Project outside the sites		
	1) Electricity		
	a. The distributing power line to the site		●
	b. The drop wiring and internal wiring within the site	●	
	c. The main circuit breaker and transformer	●	
	2) Water Supply		
	a. The city water distribution main to the site		●
	b. The supply system within the site (receiving and elevated tanks)	●	
	3) Drainage		
	a. The city drainage main (for storm sewer and others to the site)		●
	b. The drainage system (for toilet sewer, common waste, storm drainage and others) within the site	●	
	4) Gas Supply		
	a. The city gas main to the site		●
	b. The gas supply system within the site	●	
	5) Telephone System		
	a. The telephone trunk line to the main distribution frame/panel (MDF) of the building		●
	b. The MDF and the extension after the frame/panel	●	
	6) Furniture and Equipment		
	a. General furniture		●
	b. Project equipment	●	
4	To ensure prompt unloading and customs clearance of the products at ports of disembarkation in the recipient country and to assist internal transportation of the products		
	1) Marine (Air) transportation of the Products from Japan to the recipient country	●	
	2) Tax exemption and custom clearance of the Products at the port of disembarkation		●
	3) Internal transportation from the port of disembarkation to the project site	●	
5	To ensure that customs duties, internal taxes and other fiscal levies which may be imposed in the recipient country with respect to the purchase of the products and the services be exempted		●
6	To accord Japanese nationals whose services may be required in connection with the supply of the products and the services such facilities as may be necessary for their entry into the recipient country and stay therein for the performance of their work		●
7	To ensure that the Facilities and the products be maintained and used properly and effectively for the implementation of the Project		●
8	To bear all the expenses, other than those covered by the Grant, necessary for the implementation of the Project		●
9	To bear the following commissions paid to the Japanese bank for banking services based upon the B/A		
	1) Advising commission of A/P		●
	2) Payment commission		●
10	To give due environmental and social consideration in the implementation of the Project.		●

0181

**Minutes of Discussions**  
**of the Preparatory Survey on the Project for**  
**Rehabilitation of Substations and Construction of New Lines and**  
**Substations in Dar es Salaam in the United Republic of Tanzania**


In response to the request from the Government of the United Republic of Tanzania (hereinafter referred to as "GoT"), the Japan International Cooperation Agency (hereinafter referred to as "JICA"), in consultation with the Government of Japan (hereinafter referred to as "GoJ"), decided to conduct a Preparatory Survey (hereinafter referred to as "the Survey") on the Project for Rehabilitation of Substations and Construction of New Lines and Substations in Dar es Salaam (hereinafter referred to as "the Project").

JICA sent to Tanzania the Preparatory Survey Team (hereinafter referred to as "the Team"), headed by Mr. Toshiyuki HAYASHI, JICA senior advisor. The Team is scheduled to stay in Tanzania from September 29<sup>th</sup> to October 9<sup>th</sup> 2013.

The Team held discussions with the officials of Tanzania authorities concerned (hereinafter referred to as "the Tanzania side"). In the course of the discussions, Tanzania side agreed and accepted the contents of the Draft Final Report and the Draft Technical Specifications, both sides have confirmed the main items described in the sheets attached hereto.

Dar es Salaam, Tanzania  
October 9<sup>th</sup>, 2013

  
\_\_\_\_\_  
Mr. Toshiyuki Hayashi  
Team Leader  
Preparatory Survey Team  
Japan International Cooperation Agency

  
\_\_\_\_\_  
Eng. Innocent G. Luoga  
Assistant commissioner for Energy  
Ministry of Energy and Minerals

  
\_\_\_\_\_  
Eng. Felchesmi J. Mramba  
Acting Managing Director  
Tanzania Electric Supply Company Limited

## ATTACHMENT

### 1. Objective of the Project

The objective of the Project is to reinforce power transmission and distribution networks in Dar es Salaam.

### 2. Project Site

The Project sites based on the request from the Tanzania side are located in Dar es Salaam as shown in Annex-1. Transmission and distribution lines will be newly constructed and substations will be constructed, expanded and reinforced in Dar es Salaam city.

### 3. Responsible and Implementing Organizations

- (1) The responsible organization is Ministry of Energy and Minerals (MEM).
- (2) The implementing organization is Tanzania Electric Supply Company Limited (TANESCO).
- (3) The organization structures of MEM and TANESCO are shown in Annex-2 and Annex-3.

### 4. Components of the Project

The components of the project are shown in Table below.

Table Outline of the Requested Components

	Components
Ilala substation (132/33/11kV ) (Reinforcement)	<ul style="list-style-type: none"> <li>• Reinforcement of Ilala substation Including two sets of 60 MVA Transformer (132/33 kV)</li> <li>• Reinforcement of existing 132kV transmission line (approximately 7.5km: from Ubungo substation to Ilala substation)</li> </ul>
Msasani substation (33/11kV) (Expansion)	<ul style="list-style-type: none"> <li>• Expansion of Msasani substation Including a set of 15 MVA Transformer (33/11kV)</li> <li>• Expansion of 33kV distribution line (approximately 7.6 km: from Makumbusho substation to Msasani substation)</li> </ul>
Muhimbili substation (33/11kV) (New construction)	<ul style="list-style-type: none"> <li>• Construction of Muhimbili substation Including a set of 15 MVA Transformer (33/11kV)</li> <li>• Construction of 33kV distribution line (approximately 2.0km: from NCC (New City Center) substation to Muhimbili substation)</li> </ul>
Mwananyamala substation (33/11kV) (New construction)	<ul style="list-style-type: none"> <li>• Construction of Mwananyamala substation Including a set of 15 MVA Transformer (33/11kV)</li> <li>• Construction of 33kV distribution line (approximately 1.1 km: from Makumbusho substation to Mwananyamala substation)</li> </ul>
Jangwani Beach substation (33/11kV) (New construction)	<ul style="list-style-type: none"> <li>• Construction of Jangwani Beach substation Including a set of 15 MVA Transformer (33/11kV)</li> <li>• Construction of 33kV distribution line (approximately 6.5 km: from Tegeta substation to Jangwani Beach substation)</li> </ul>

*[Handwritten signature]*

*[Handwritten signature]*

*[Handwritten signature]*

#### 5. Japan's Grant Aid Scheme

- (1) The Tanzania side has understood Japan's Grant Aid explained by the Team as described in Annex-4 and Annex-5.
- (2) The Tanzania side will take the necessary measures, as described in Annex-6, for smooth implementation of the Project.

#### 6. Project Cost

The Tanzania side agreed that the cost for the Project should not exceed the amount agreed on Exchange of Notes (E/N). The Tanzania side also agreed that the cost for the Project contains procurement cost of equipment, transportation cost up to the Project site, construction cost and the Consultant fees.

#### 7. Confidentiality of the project

##### (1) Detailed specifications of the Facilities and Equipment

Both sides agreed that all the information related to the Project including detailed drawings and specifications of the facilities and equipment and other technical information shall not be disclosed to any outside parties (i.e. outside of JICA and the Tanzania side) before the conclusion of all contract(s) for the Project.

##### (2) Confidentiality of the Cost Estimation

The Team explained the estimated cost of the Project as described in Annex 7. Both sides agreed that the estimated cost for the Project should never be duplicated or disclosed to any outside parties (i.e. outside of JICA and the Tanzania side) before tender for the Project. Tanzania side also understood that the estimated cost for the Project attached as Annex 7 is not the final and is subject to change as a result of examination through revision of the Outline Design Study.

#### 8. Possibility of Change in Scope, Schedule and Cost of the Project

Tanzania side and the Team confirmed that the scope, the schedule, and the cost for the Project are tentative and subject to change due to the domestic circumstances in Japan and in Tanzania.

#### 9. Environmental and Social Considerations

- (1) The Tanzania side agreed to conduct the required environmental works, and obtain approval on environmental clearance for implementation of the Project.
- (2) The Tanzania side agreed to comply with the JICA Guidelines for Environmental and Social Considerations (hereinafter referred to as "JICA Guidelines") as well as laws and regulations in Tanzania, and was requested to prepare Environmental Checklist and Monitoring Form which are designated by JICA Guidelines for an outline design.
- (3) The Tanzania side agreed to make necessary arrangements with concerned governmental organizations in order to secure funding for and execution of the above environmental matters in a schedule as required for smooth execution of the Project.
- (4) The Tanzania side understands that according to "*the Environmental Impact Assessment and Audit Regulations, 2005*" which is made under "*the Environmental Management Act, No.20 of 2004*", the Project is on a mandatory list (the First Schedule, Mandatory list A, 7-(1)) requiring EIA either a full EIA or developing an Environmental and Social Management Plan (ESMP) depending on the screening process. **TANESCO** shall secure a necessary budget for EIA and undertake it, and obtain the Environmental Certificate approved by the Minister **by the end of January 2014**.



- (5) Regarding the Abbreviated Resettlement Action Plan (ARAP), the Tanzania side and the Team confirmed that the area which will be affected by the Project was changed from technical and social point of view. Both sides also confirmed that TANESCO shall compensate the people who had already agreed to the resettlement by the end of January 2014, even if they will be excluded from working area of this project because of this change.
- (6) At the moment, around 90 people would be expected to be relocated for the Project. The Tanzania side understands that the Team will assist TANESCO in identifying project affected people and developing an "abbreviated Resettlement Action Plan (ARAP)". **TANESCO** shall implement the ARAP **by the end of January 2014**. TANESCO will be responsible to pay for compensation on new settlement.
- (7) **TANESCO** shall obtain land use permits and complete land acquisition necessary for the Project **by the end of November 2013**.
- (8) Based on the section 178 of "*the Environmental Management Act, 2004*" and the Section 17 of "the Environmental Impact Assessment and Audit Regulations, 2005", **TANESCO** shall identify stakeholders related to this project and stakeholder consultations during the process of conducting Environmental Impact Assessment study.
- (9) Since the Environmental Impact Assessment process has not been completed yet for this project, the Tanzania side understands the abbreviated Resettlement Plan (ARAP) might need to be amended based on the results of Environmental Impact Assessment study.
- (10) The Tanzania side agreed that the Team will involve a certified valuer in developing the abbreviated Resettlement Action Plan (ARAP) to make it efficient.
- (11) The Tanzania side agreed that the team will be provided information of valuation status for the project site by **TANESCO** in order to develop an abbreviated Resettlement Action Plan (ARAP).
- (12) The Tanzania side and the Team confirmed information on environmental and social considerations including major impacts and relevant mitigation measures are summarized in the Environmental Checklist attached as Annex-8. The Tanzania side will inform JICA of any major changes which may affect environmental and social considerations made for the Project by revising the Checklist in a timely manner.
- (13) The Tanzania side and the Team confirmed environmental monitoring will be conducted by **TANESCO** in accordance with the Environmental Monitoring Plan described in the Environmental Impact Assessment (EIA).
- (14) The Tanzania side and the Team confirmed internal monitoring proposed in the abbreviated Resettlement Action Plan (ARAP) will be conducted by **TANESCO**. The Tanzania side agreed that progress of land acquisition and implementation of abbreviated Resettlement Action Plan (ARAP) will be monitored until land acquisition and resettlement activities including livelihood restoration program are completed. **TANESCO** will report the monitoring results to JICA on a quarterly.

Q

Wgdi

PP

## 10. Other Relevant Issues

### (1) Coordination among relevant donors and agencies

The Team requested the Tanzania side to ensure coordination among relevant donors and agencies for smooth implementation of the Project and the Tanzania side agreed to it.

### (2) Operation and maintenance (O&M) of facilities

As it is quite important that TANESCO secures proper O&M of Equipment, facilities, tools, etc. that may be provided under the Japanese Grant Aid Scheme, the Team requested the Tanzania side to take the maximum opportunities from the on-going JICA Technical Cooperation Project in order to acquire necessary knowledge and skills. The Tanzania side agreed to it.

### (3) Reuse of facilities

The Ilala substation was installed 8 circuit breakers by follow-up project of JICA. The Tanzania side understood that these facilities shall be reused in the Arusha substation, Muheza substation, Kiltex substation Arusha and Mtwara power station after the Project and Tanzania side shall inform JICA when the facilities will be installed other substations.

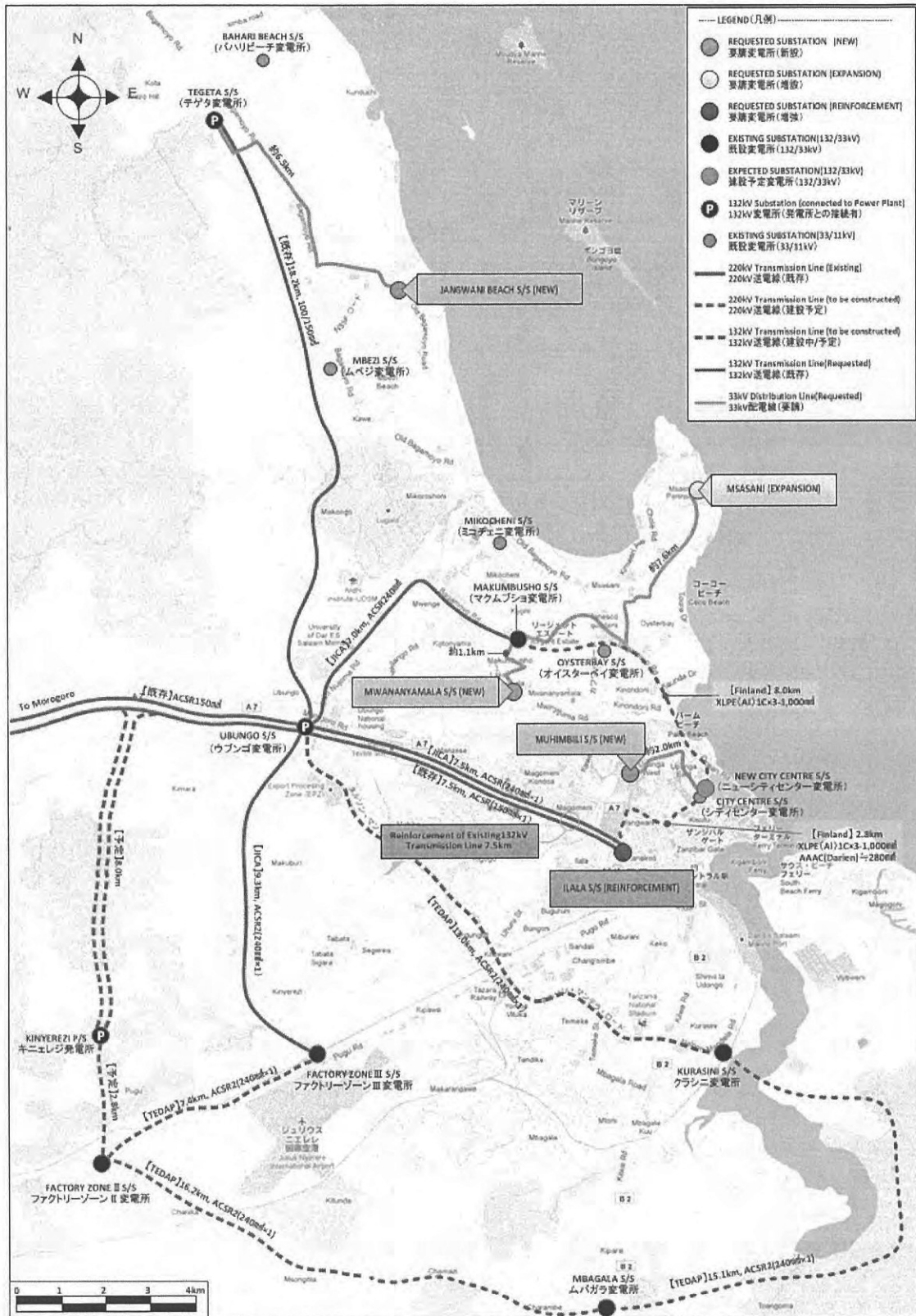
(End)

#### <List of Annex>

- Annex-1 Location of the Requested Project Sites
- Annex-2 Organization Structure of Ministry of Energy and Minerals
- Annex-3 Organization Structure of TANESCO (head office)
- Annex-4 Japan's Grant Aid
- Annex-5 Flow Chart of Japan's Grant Aid Procedures
- Annex-6 Major Undertakings to be taken by Each Government
- Annex-7 Estimated Project Cost
- Annex-8 Environmental Checklist







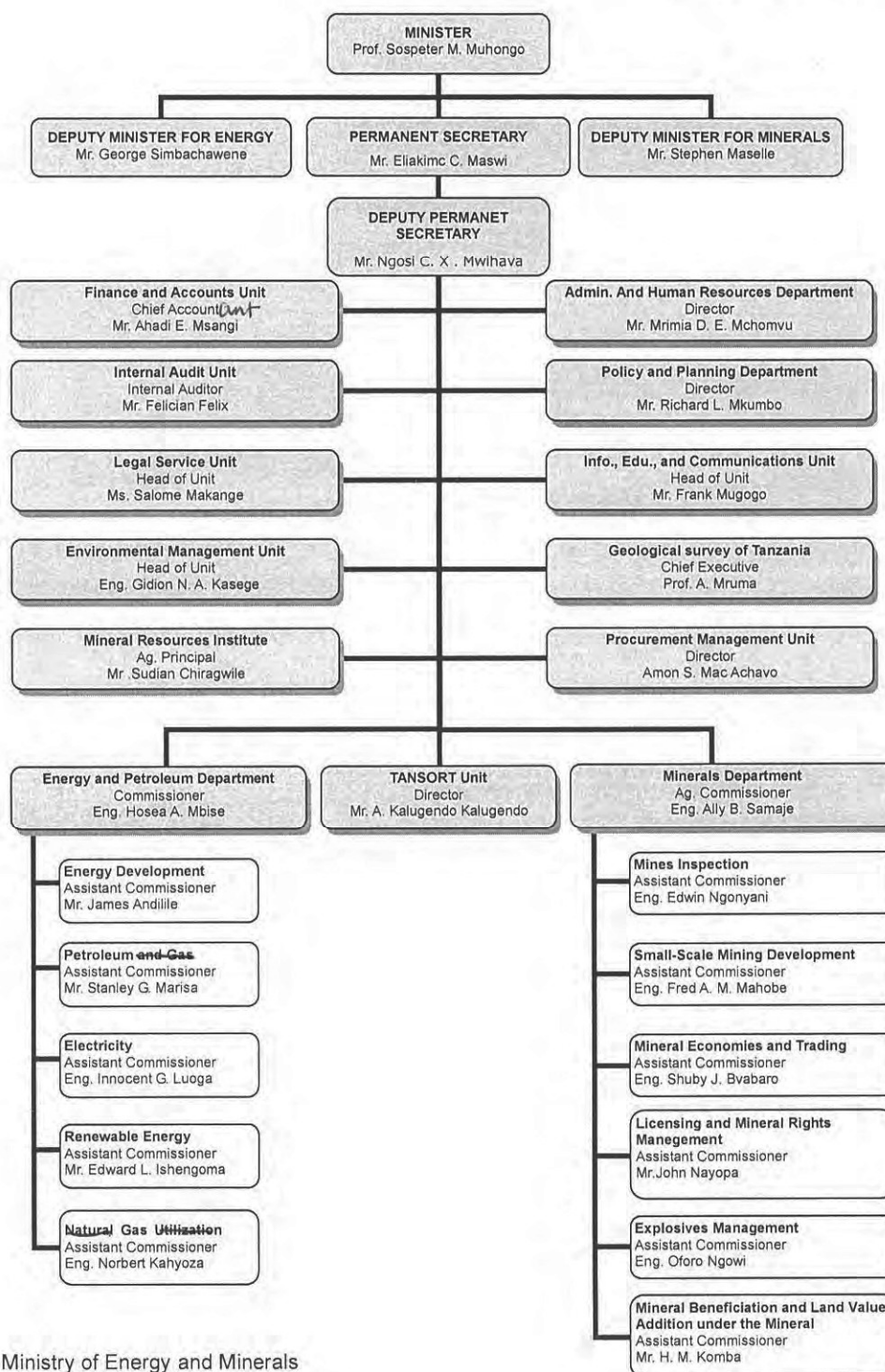
LOCATION OF THE REQUESTED PROJECT SITES

*(Handwritten mark)*

*luger*

*(Handwritten signature)*

ORGANIZATION STRUCTURE OF MINISTRY OF ENERGY AND MINERALS  
AS OF OCTOBER, 2013



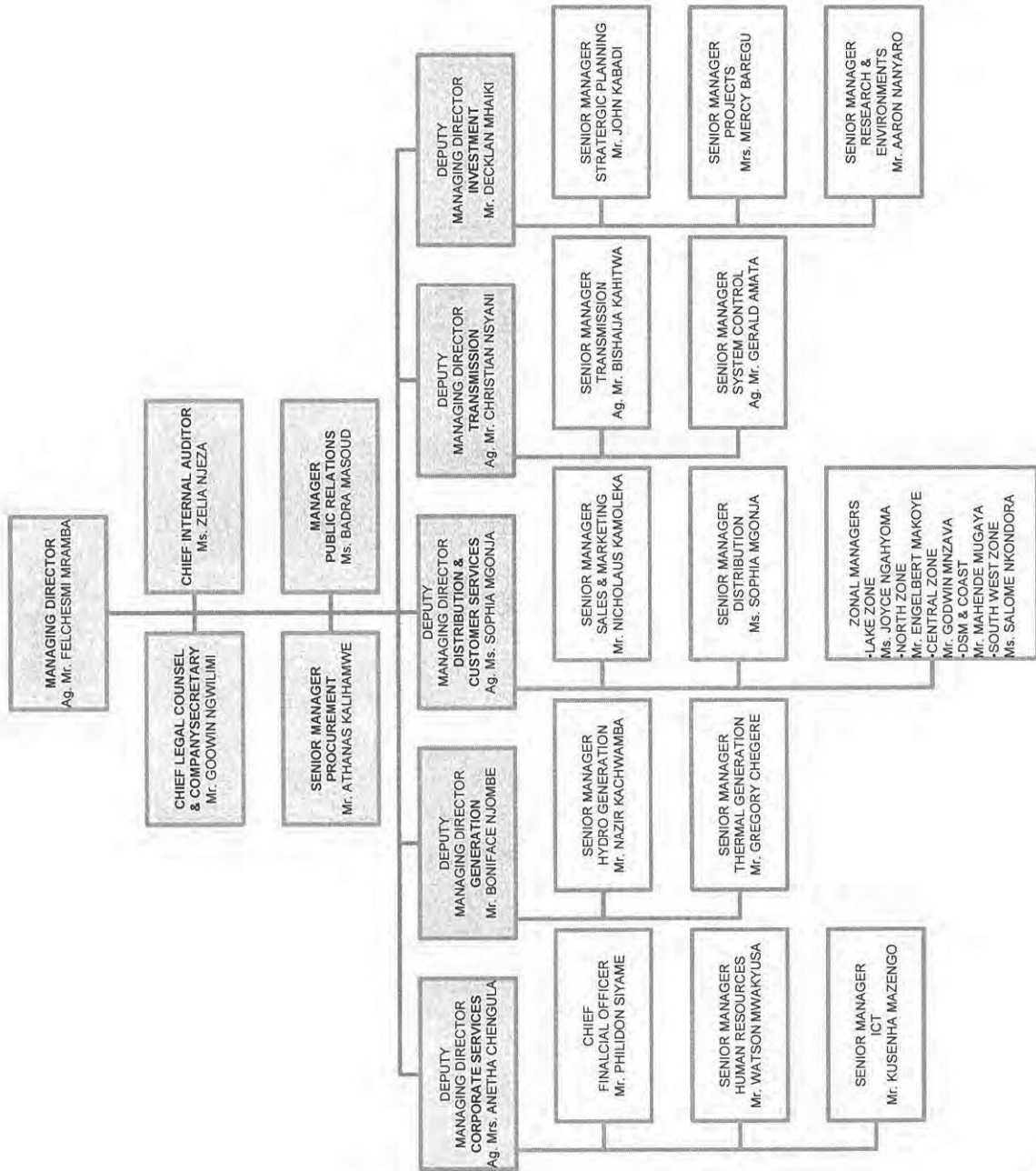
Source: Ministry of Energy and Minerals

*[Handwritten signature]*

*[Handwritten signature]*

*[Handwritten signature]*

ORGANIZATION STRUCTURE OF TANESCO (HEAD OFFICE)



*[Handwritten signature]*

*[Handwritten signature]*

*[Handwritten initials]*

## JAPAN'S GRANT AID

The Government of Japan (hereinafter referred to as "the GOJ") is implementing the organizational reforms to improve the quality of ODA operations, and as a part of this realignment, a new JICA law was entered into effect on October 1, 2008. Based on the law and the decision of the Government of Japan (hereinafter referred to as "the GOJ"), JICA has become the executing agency of the Grant Aid for General Projects, for Fisheries and for Cultural Cooperation, etc.

The Grant Aid is non-reimbursable fund to a recipient country to procure the facilities, equipment and services (engineering services and transportation of the products, etc.) for economic and social development of the country under principles in accordance with the relevant laws and regulations of Japan. The Grant Aid is not supplied through the donation of materials as such.

### 1. Grant Aid Procedures

The Japanese Grant Aid is conducted as follows-

- Preparatory Survey (hereinafter referred to as "the Survey")
  - The Survey conducted by JICA
- Appraisal & Approval
  - Appraisal by The GOJ and JICA, and Approval by the Japanese Cabinet
- Determination of Implementation
  - The Notes exchanged between the GOJ and a recipient country
- Grant Agreement (hereinafter referred to as "the G/A")
  - Agreement concluded between JICA and a recipient country
- Implementation
  - Implementation of the Project on the basis of the G/A

### 2. Preparatory Survey

#### (1) Contents of the Survey

The aim of the Survey is to provide a basic document necessary for the appraisal of the Project by JICA and the GOJ. The contents of the Survey are as follows:

- Confirmation of the background, objectives, and benefits of the Project and also institutional capacity of agencies concerned of the recipient country necessary for the implementation of the Project.
- Evaluation of the appropriateness of the Project to be implemented under the Grant Aid Scheme from a technical, financial, social and economic point of view.
- Confirmation of items agreed on by both parties concerning the basic concept of the Project.
- Preparation of a basic design of the Project.

Q

high

PP

- Estimation of costs of the Project.

The contents of the original request by the recipient country are not necessarily approved in their initial form as the contents of the Grant Aid project. The Basic Design of the Project is confirmed considering the guidelines of the Japan's Grant Aid scheme.

JICA requests the Government of the recipient country to take whatever measures necessary to ensure its self-reliance in the implementation of the Project. Such measures must be guaranteed even though they may fall outside of the jurisdiction of the organization in the recipient country actually implementing the Project. Therefore, the implementation of the Project is confirmed by all relevant organizations of the recipient country through the Minutes of Discussions.

(2) Selection of Consultants

For smooth implementation of the Survey, JICA uses (a) registered consulting firm(s). JICA selects (a) firm(s) based on proposals submitted by interested firms.

(3) Result of the Survey

The Report on the Survey is reviewed by JICA, and after the appropriateness of the Project is confirmed, JICA recommends the GOJ to appraise the implementation of the Project.

### 3. Japan's Grant Aid Scheme

(1) The E/N and the G/A

After the Project is approved by the Cabinet of Japan, the Exchange of Notes (hereinafter referred to as "the E/N") will be signed between the GOJ and the Government of the recipient country to make a plea for assistance, which is followed by the conclusion of the G/A between JICA and the Government of the recipient country to define the necessary articles to implement the Project, such as payment conditions, responsibilities of the Government of the recipient country, and procurement conditions.

(2) Selection of Consultants

The consultant firm(s) used for the Survey will be recommended by JICA to the recipient country to also work on the Project's implementation after the E/N and the G/A, in order to maintain technical consistency.

(3) Eligible source country

Under the Japanese Grant Aid, in principle, Japanese products and services including transport or those of the recipient country are to be purchased. When JICA and the Government of the recipient country or its designated authority deem it

Legal

necessary, the Grant Aid may be used for the purchase of the products or services of a third country. However, the prime contractors, namely, constructing and procurement firms, and the prime consulting firm are limited to "Japanese nationals".

(4) Necessity of "Verification"

The Government of the recipient country or its designated authority will conclude contracts denominated in Japanese yen with Japanese nationals. Those contracts shall be verified by JICA. This "Verification" is deemed necessary to secure accountability to Japanese taxpayers.

(5) Major undertakings to be taken by the Government of the Recipient Country

In the implementation of the Grant Aid Project, the recipient country is required to undertake such necessary measures as Annex-5.

(6) "Proper Use"

The Government of the recipient country is required to maintain and use the facilities constructed and the equipment purchased under the Grant Aid properly and effectively and to assign staff necessary for this operation and maintenance as well as to bear all the expenses other than those covered by the Grant Aid.

(7) "Export and Re-export"

The products purchased under the Grant Aid should not be exported or re-exported from the recipient country.

(8) Banking Arrangements (B/A)

- a) The Government of the recipient country or its designated authority should open an account in the name of the Government of the recipient country in a bank in Japan (hereinafter referred to as "the Bank"). JICA will execute the Grant Aid by making payments in Japanese yen to cover the obligations incurred by the Government of the recipient country or its designated authority under the Verified Contracts.
- b) The payments will be made when payment requests are presented by the Bank to JICA under an Authorization to Pay (A/P) issued by the Government of the recipient country or its designated authority.

(9) Authorization to Pay (A/P)

The Government of the recipient country should bear an advising commission of an Authorization to pay and payment commissions to the Bank.

(10) Social and Environmental Considerations

lugdr

4. Minutes of Discussions (Third Field Survey)

A recipient country must ensure the social and environmental considerations for the Project and must follow the environmental regulation of the recipient country and JICA socio-environmental guideline.



(End)



Flow Chart of Japan's Grant Aid Procedures

Stage	Flow & Works	Recipient Government	Japanese Government	JICA	Consultant	Contractor	Others
Application	Request (T/R : Terms of Reference) ↓ Screening of Project → Evaluation of T/R → Project Identification Survey*						
Project Formulation & Preparation	Preparatory Survey Preliminary Survey* → Field Survey Home Office Work Reporting ↓ Outline Design → Selection & Contracting of Consultant by Proposal → Field Survey Home Office Work Reporting *if necessary Explanation of Draft → Final Report						
Appraisal & Approval	Appraisal of Project ↓ Inter Ministerial Consultation ↓ Presentation of Draft Notes ↓ Approval by the Cabinet						
Implementation	E/N and G/A (E/N: Exchange of Notes) (G/A: Grant Agreement) ↓ Banking Arrangement (A/P: Authorization to Pay) ↓ Consultant Contract → Verification → Issuance of A/P ↓ Detailed Design & Tender Documents → Approval by Recipient Government → Preparation for Tendering ↓ Tendering & Evaluation ↓ Procurement /Construction Contract → Verification → A/P ↓ Construction → Completion Certificate → A/P ↓ Operation → Post Evaluation Study						
Evaluation & Follow up	Ex-post Evaluation → Follow up						



## Annex-6

## Major Undertakings to be taken by Each Government

No	Items	To be covered by Grant Aid	To be covered by Recipient Side
1	to secure lots of land necessary for the implementation of the Project and to clear the sites;		•
2	To construct the following facilities		
	1) The building	•	
	2) The gates and fences in and around the site		•
	3) The parking lot	•	
	4) The road within the site	•	
	5) The road outside the site (including Access road)		•
3	To provide facilities for distribution of electricity, water supply and drainage and other incidental facilities necessary for the implementation of the Project outside the sites		
	1) Electricity		
	a. The distributing power line to the site		•
	b. The drop wiring and internal wiring within the site	•	
	c. The main circuit breaker and transformer	•	
	2) Water Supply		
	a. The city water distribution main to the site		•
	b. The supply system within the site (receiving and elevated tanks)	•	
	3) Drainage		
	a. The city drainage main (for storm sewer and others to the site)		•
	b. The drainage system (for toilet sewer, common waste, storm drainage and others) within the site	•	
	4) Gas Supply		
	a. The city gas main to the site		•
	b. The gas supply system within the site	•	
	5) Telephone System		
	a. The telephone trunk line to the main distribution frame/panel (MDF) of the building		•
	b. The MDF and the extension after the frame/panel	•	
	6) Furniture and Equipment		
	a. General furniture		•
	b. Project equipment	•	
4	To ensure prompt unloading and customs clearance of the products at ports of disembarkation in the recipient country and to assist internal transportation of the products		
	1) Marine (Air) transportation of the Products from Japan to the recipient country	•	
	2) Tax exemption and custom clearance of the Products at the port of disembarkation		•
	3) Internal transportation from the port of disembarkation to the project site	•	
5	To ensure that customs duties, internal taxes and other fiscal levies which may be imposed in the recipient country with respect to the purchase of the products and the services be exempted		•
6	To accord Japanese nationals whose services may be required in connection with the supply of the products and the services such facilities as may be necessary for their entry into the recipient country and stay therein for the performance of their work		•
7	To ensure that the Facilities and the products be maintained and used properly and effectively for the implementation of the Project		•
8	To bear all the expenses, other than those covered by the Grant, necessary for the implementation of the Project		•
9	To bear the following commissions paid to the Japanese bank for banking services based upon the B/A		
	1) Advising commission of A/P		•
	2) Payment commission		•
10	To give due environmental and social consideration in the implementation of the Project.		•

①

Cugaly

②

**(Confidential)**

**Estimated Project Cost**

---

This page is closed due to the confidentiality.

#### 4. Minutes of Discussions (Third Field Survey)

This page is closed due to the confidentiality.

## Environmental Checklist

Category	Environmental Item	Main Check Items	Yes: Y No: N	Confirmation of Environmental Considerations (Reasons, Mitigation Measures)
1 Permits and Explanation	(1) EIA and Environmental Permits	<p>(a) Have EIA reports been already prepared in official process?</p> <p>(b) Have EIA reports been approved by authorities of the host country's government?</p> <p>(c) Have EIA reports been unconditionally approved? If conditions are imposed on the approval of EIA reports, are the conditions satisfied?</p> <p>(d) In addition to the above approvals, have other required environmental permits been obtained from the appropriate regulatory authorities of the host country's government?</p>	<p>(a) N</p> <p>(b) N</p> <p>(c) N</p> <p>(d) Y</p> <p>N</p> <p>Y</p> <p>N</p> <p>N</p> <p>N</p>	<p>(a) EIA report has not been prepared yet. According to "the Environmental Impact Assessment and Audit Regulations, 2005" which is made under "the Environmental Management Act, No.20 of 2004", the Project is on a mandatory list (the First Schedule, Mandatory list A, 7-(1)) requiring EIA. On May 7<sup>th</sup> 2013, National Environmental Management Council (NEMC) made a decision that this project requires a full Environmental Impact Assessment (EIA) study. TANESCO has already secured a necessary budget for EIA and shall undertake it, and shall obtain the Environmental Certificate approved by the Minister. At the time of September 2013, the Environmental Department of TANESCO is working on the scoping report, which is expected to be completed within September.</p> <p>(b) See (a)</p> <p>(c) See (a)</p> <p>(d) Following permits are required to obtain for this project.</p> <p>➤ <u>Land use permit</u> for Jangwani Beach substation site: TANESCO obtained a land use permit from Tanzania People's Defense Force (TPDF) on December 2, 2011.</p> <p>➤ <u>Land use permit</u> for Muhimbili substation site: TANESCO obtained a permit from Muhimbili Hospital on October 1, 2012. Since the site boundary shall be modified from original plan, TANESCO shall re-submit a request for the land use permit to Muhimbili Hospital.</p> <p>➤ <u>Permit to use road reserve</u>: TANESCO has obtained the permission to use road reserve to construct 33kV distribution line from TANROADS and Ilala Municipality on 4<sup>th</sup> July 2013 and from Kinondoni Municipality on 3<sup>rd</sup> July 2013.</p> <p>➤ <u>Safety Inspection Permit</u> issued by the Ministry of Labor, Youth Development and Sports: This permit is required for construction and operation phase according to Occupational Health and Safety Act No.5 of 2003. TANESCO shall obtain it before construction starts.</p> <p>➤ <u>Building Permits</u> by Dar es Salaam City Council: TANESCO shall obtain the building permits to construct substation buildings from Dar es Salaam City Council. This permit is stipulated in the City Council By-law. After making a contact with Contractor, the process for obtaining the permit starts.</p> <p>➤ <u>Permission from the Ministry of Infrastructure, to transport heavy loads</u></p>

Environmental Checklist

Category	Environmental Item	Main Check Items	Yes: Y No: N	Confirmation of Environmental Considerations (Reasons, Mitigation Measures)
	(2) Explanation to the Local Stakeholders	<p>(a) Have contents of the project and the potential impacts been adequately explained to the Local stakeholders based on appropriate procedures, including information disclosure? Is understanding obtained from the Local stakeholders?</p> <p>(b) Have the comment from the stakeholders (such as local residents) been reflected to the project design?</p>	<p>(a) N</p> <p>(b) N</p>	<p><u>from the port of entry to the site</u> (TANROADS overloaded charges are paid to the Ministry of Infrastructure for issuance of road permit to transport the equipment of abnormal weights and sizes.); Contractor shall obtain this permit before transporting heavy loads.</p> <p>(a) Based on the section 178 of "the Environmental Management Act, 2004" and the Section 17 of "the Environmental Impact Assessment and Audit Regulations, 2005", TANESCO shall identify stakeholders related to this project and stakeholder consultations during the process of conducting Environmental Impact Assessment study. After the procurement of EIA consultant is completed, the stakeholder consultation shall be held.</p> <p>EIA report shall be disclosed to the public. EIA Report Disclosure is the task of the National Environmental Management Council (NEMC) established under section 16 of the Environmental Management Act, 2004. The task is clarified in "PART VIII ACCESS TO ENVIRONMENTAL IMPACT STATEMENTS AND INFORMATION" in the Environmental Impact Assessment and Audit Regulations, 2005.</p> <p>(b) See (a)</p>
	(3) Examination of Alternatives	<p>(a) Have alternative plans of the project been examined with social and environmental considerations?</p>	(a) Y	<p>(a) In order to reduce negative environmental and social impacts including land acquisition and displacement, and also overall project costs, while maximizing the outcome of the project, the Team reviewed its original proposal and has proposed alternative options for this project. Following alternatives are compared as shown (see the details in the report).</p> <ul style="list-style-type: none"> <li>➢ Alternative 1 (Alt-1): The original proposal by TANESCO.</li> <li>➢ Alternative 2 (Alt-2): Proposed alternative option by the Team. Some of the distribution lines are rerouted.</li> <li>➢ Alternative 3 (Alt-3): No project implementation (Zero option).</li> </ul> <p>The zero option of Alt-3 shall not solve the existing electrical problems; power disruption, voltage fluctuations and voltage drop by over load. The original proposal by TANESCO of Alt-1 shall cause a lot of relocation and might have some minor impact on natural environment. The proposed alternative option of Alt-2 shall cause less relocation compared to Alt-1 with no significant negative impact on natural environment. Thus, Alt-2 is most recommended for this project.</p>
2 Pollution Control	(1) Water Quality	(a) Is there any possibility that soil runoff from the bare lands resulting from earthmoving activities, such as cutting	(a) N	<p>(a) Although small earthmoving activities shall be expected at Muhimbili substation site, there is hardly any possibility of degradation in downstream basin. Since magnitude of those earthmovings are small scale and countermeasures shall be</p>

Environmental Checklist

Category	Environmental Item	Main Check Items	Yes: Y No: N	Confirmation of Environmental Considerations (Reasons, Mitigation Measures)
3 Natural Environment	(1) Protected Areas	and filling shall cause water quality degradation in downstream water areas? If the water quality degradation is anticipated, are adequate measures considered?		taken against soil erosion during the construction phase.
	(2) Ecosystem	(a) Is the project site located in protected areas designated by the country's laws or international treaties and conventions? Is there a possibility that the project shall affect the protected areas? (a) Does the project site encompass primeval forests, tropical rain forests, ecologically valuable habitats (e.g., coral reefs, mangroves, or tidal flats)? (b) Does the project site encompass the protected habitats of endangered species designated by the country's laws or international treaties and conventions? (c) If significant ecological impacts are anticipated, are adequate protection measures taken to reduce the impacts on the ecosystem? (d) Are adequate measures taken to prevent disruption of migration routes and habitat fragmentation of wildlife and livestock? (e) Is there any possibility that the project shall cause the negative impacts, such as destruction of forest, poaching, desertification, reduction in wetland areas, and disturbance of ecosystem due to introduction of exotic (non-native invasive) species and pests? Are adequate measures for preventing such impacts considered? (f) In cases where the project site is located in undeveloped areas, is there	(a) N	(a) The project sites are not located in protected areas.
			N	(a)-(f): The project is located in the city area of Dar es Salaam and most of the vegetation and fauna have been lost or displaced due to intensive urban development of residential areas, infrastructures and gardens. There is no special habitat of endangered fauna and flora in the project area.

Environmental Checklist

Category	Environmental Item	Main Check Items	Yes: Y No: N	Confirmation of Environmental Considerations (Reasons, Mitigation Measures)
	(3) Topography and Geology	any possibility that the new development shall result in extensive loss of natural environments? (a) Is there any soft ground on the route of power transmission and distribution lines that may cause slope failures or landslides? Are adequate measures considered to prevent slope failures or landslides, where needed? (b) Is there any possibility that civil works, such as cutting and filling shall cause slope failures or landslides? Are adequate measures considered to prevent slope failures or landslides? (c) Is there a possibility that soil runoff shall result from cut and fill areas, waste soil disposal sites, and borrow sites? Are adequate measures taken to prevent soil runoff?	(a) N  (b) N  (c) Y	(a)(b) Altitude of Dar es Salaam is less than 200 m.a.s.l. Area is generally flat to gently undulating plains, slope range 0-3% developed on old alluvial terrace no longer flooded. No major alterations of the local topography or large-scale civil engineering work shall occur under the project, making slope failures, landslides or soil runoff highly unlikely.  (c) The preparation of the substation sites could have an adverse impact on soils through excavation for the foundations of the site. This potential impact shall, however, be short-lived on the flat land or temporary since it is expected that exposed areas shall be covered quickly by vegetative re-growth to stabilize the soil and minimize erosion. TANESCO shall apply erosion control practices such as compaction and early re-vegetation to promote soil conservation.
4 Social Environment	(1) Resettlement	(a) Is involuntary resettlement caused by project implementation? If involuntary resettlement is caused, are efforts made to minimize the impacts caused by the resettlement?  (b) Is adequate explanation on compensation and resettlement assistance given to affected people prior to resettlement?	(a) Y  (b) Y	(a) To minimize the impact, an abbreviated resettlement action plan (ARAP) shall be developed and TANESCO shall undertake it before the commencement of the project. Acquiring Mawananyamala substation site causes involuntary resettlement of about 60 people. Two plots of land shall be acquired for this substation. Some houses are within the project affected area of the transmission line from Ubungo substation to Ilala substation. The study for developing the abbreviated resettlement action plan is undertaking now and after the study is completed, the number of houses and people required relocation shall be determined. (b) In developing the ARAP, consultation with project affected people shall be held. TANESCO shall explain resettlement assistance based on the ARAP. The ARAP shall be made available to the public for a period of six weeks in the relevant municipal and ward offices as follows: <ul style="list-style-type: none"> <li>➤ Newspaper to inform the RAP to public.</li> <li>➤ Municipal</li> <li>➤ Regional commissioner Office</li> <li>➤ Ward office</li> </ul>

Environmental Checklist

Category	Environmental Item	Main Check Items	Yes: Y No: N	Confirmation of Environmental Considerations (Reasons, Mitigation Measures)
		<p>(c) Is the resettlement plan, including compensation with full replacement costs, restoration of livelihoods and living standards developed based on socioeconomic studies on resettlement?</p> <p>(d) Are the compensations going to be paid prior to the resettlement?</p> <p>(e) Are the compensation policies prepared in document?</p> <p>(f) Does the resettlement plan pay particular attention to vulnerable groups or people, including women, children, the elderly, and people below the poverty line, ethnic minorities, and indigenous peoples?</p> <p>(g) Are agreements with the affected people obtained prior to resettlement?</p> <p>(h) Is the organizational framework established to properly implement resettlement? Are the capacity and budget secured to implement the plan?</p> <p>(i) Are any plans developed to monitor the impacts of resettlement?</p> <p>(j) Is the grievance redress mechanism established?</p>	<p>(c) Y</p> <p>(d) Y</p> <p>(e) Y</p> <p>(f) Y</p> <p>(g) Y</p> <p>(h) Y</p> <p>(i) N</p> <p>(j) N</p>	<p>TANESCO website</p> <p>Language: Swahili / English</p> <p>(c) An abbreviated resettlement action plan (ARAP) is going to be developed based on socioeconomic studies on resettlement. Full replacement cost and restoration of livelihoods and living standards shall be considered in developing the ARAP.</p> <p>(d) According to the Tanzanian law, compensation must be provided prior to displacement. TANESCO shall pay compensation prior to the resettlement.</p> <p>(e) The ARAP shall contain the compensation policies.</p> <p>(f) In developing the ARAP, existence of such groups shall be assessed during socio-economic survey in the proposed site and pay particular attention to their needs if found to be available, especially, women, children and elderly person.</p> <p>(g) In developing the ARAP, agreement with the affected people shall be obtained prior to resettlement.</p> <p>(h) In developing the ARAP, the organizational framework shall be established to implement resettlement. TANESCO and other responsible organization shall secure necessary resource to implement the plan.*</p> <p>(i) The ARAP shall contain a monitoring plan for its proper implementation.</p> <p>(j) In developing the ARAP, the grievance mechanism shall be developed.</p>
	(2) Living and Livelihood	<p>(a) Is there a possibility that the project shall adversely affect the living conditions of inhabitants? Are adequate measures considered to reduce the impacts, if necessary?</p> <p>(b) Is there a possibility that diseases, including infectious diseases, such as HIV shall be brought due to immigration</p>	<p>(a) Y</p> <p>(b) N</p>	<p>(a) The project shall cause involuntary resettlement and it may affect adversely the living conditions of inhabitants. To minimize this impact, the ARAP shall be developed and implemented.</p> <p>Construction work could affect access to public services and traffic by the local people. However, the construction works shall be done within the limited areas and in short-term. The adverse impact is not serious and is limited. Construction observers shall direct local people and traffic passing safely.</p> <p>(b) The project do not expect any adverse impact regarding infectious diseases because no massive influx of workers is expected as most labors can be supplied locally for the construction works. However, with the introduction of some migrant</p>

*[Handwritten mark]*

*[Handwritten signature]*

*[Handwritten signature]*



Environmental Checklist

Category	Environmental Item	Main Check Items	Yes: Y No: N	Confirmation of Environmental Considerations (Reasons, Mitigation Measures)
		<p>of workers associated with the project? Are adequate considerations given to public health, if necessary?</p> <p>(c) Is there any possibility that installation of structures, such as power line towers shall cause radio interference? If any significant radio interference is anticipated, are adequate measures considered?</p> <p>(d) Are the compensations for transmission wires given in accordance with the domestic law?</p>	(c) N	<p>workers into the communities along the project sites, mitigation measures shall be considered to minimize the potential risk of spread of sexually transmitted diseases (STD) including HIV/AIDS.</p> <p>(c) The new 132kV transmission power cable shall be installed on the existing power line towers from Ubungo substation to Ilala substation by replacing current 33kV power cable. Required way leave of 40m width is secured and no radio interference is anticipated. Some informal settlers exist within the way leave, but the way leave shall be cleared during the way leave management activity by the transmission department of TANESCO. The planned construction of 33kV distribution line does not expect radio interference which shall negatively affect local people.</p> <p>(d) Compensation shall be provided based on the ARAP.</p>
	(3) Heritage	<p>(a) Is there a possibility that the project shall damage the local archeological, historical, cultural, and religious heritage? Are adequate measures considered to protect these sites in accordance with the country's laws?</p>	(a) Y	<p>(a) There is no prominent archaeological, historical, cultural or religious site to consider at the project sites.</p>
	(4) Landscape	<p>(a) Is there a possibility that the project shall adversely affect the local landscape? Are necessary measures taken?</p>	(a) N	<p>(a) No significant impact is expected on landscape because there are no special natural and cultural landscapes around the project sites. However, some trees shall be cut down. The distribution lines shall be designed and routed to avoid tall/large trees as much as possible.</p>
	(5) Ethnic Minorities and Indigenous Peoples	<p>(a) Are considerations given to reduce impacts on the culture and lifestyle of ethnic minorities and indigenous peoples? (b) Are all of the rights of ethnic minorities and indigenous peoples in relation to land and resources respected?</p>	N	<p>(a)(b): There are no settlements of ethnic minorities or indigenous people in and along the project sites.</p>
	(6) Working Conditions	<p>(a) Is the project proponent not violating any laws and ordinances associated with the working conditions of the country which the project proponent should observe in the project? (b) Are tangible safety considerations in</p>	(a) N (b) Y	<p>(a) In accordance with relevant laws such as the Occupational Health and Safety Act, 2003; Electricity Ordinance Cap.131, Fire Act no. 3 of 2003, Employment and Labour Relations Act 2004, TANESCO has developed "Health and Safety Policy, revised in 2008" and "Contractors' Occupational Health and Safety Guidelines, revised in 2011." The project shall follow these policy and guidelines.</p> <p>(b) Safety rules, protection code &amp; safe working practice are in place in line with</p>

*[Handwritten mark]*

*[Handwritten signature]*

*[Handwritten mark]*

Environmental Checklist

Category	Environmental Item	Main Check Items	Yes: Y No: N	Confirmation of Environmental Considerations (Reasons, Mitigation Measures)
		place for individuals involved in the project, such as the installation of safety equipment which prevents industrial accidents, and management of hazardous materials? (c) Are intangible measures being planned and implemented for individuals involved in the project, such as the establishment of a safety and health program, and safety training (including traffic safety and public health) for workers etc.?  (d) Are appropriate measures taken to ensure that security guards involved in the project not to violate safety of other individuals involved, or local residents?	(c) Y   (d) Y	TANESCO's Health and Safety Policy and adhered to during project implementation.  (c) Upon being awarded a contract to work within TANESCO controlled premises, the Contractor shall prepare a Contractor's Occupational Health and Safety Management Plan, including details of occupational health and safety procedures to prevent accidents and other OHS related incidents. In this Contractor's OHS Management Plan, the Contractor is also required to include a Disaster and Emergency Response Plan. This plan shall detail the emergency measures and procedures that the Contractor has put in place for their own employees. The Contractor's Occupational Health and Safety Management Plan must be approved by TANESCO before the contractor commences work. In addition to the Contractor's Occupational Health and Safety Management Plan that Contractors shall submit prior to commencement of work, regular OHS audits which shall be conducted by the Contractor and their records kept. (d) Security guards on the project shall be trained on appropriate measures to take in handling and dealing with the general public. This shall be included in regular safety communications to be done by the contractor.
5 Others	(1) Impacts during Construction	(a) Are adequate measures considered to reduce impacts during construction (e.g., noise, vibrations, turbid water, dust, exhaust gases, and wastes)?  (b) If construction activities adversely affect the natural environment (ecosystem), are adequate measures considered to reduce impacts?	(a) Y  (b) N	(a) According to TANESCO's Health and Safety Policy and Contractors' Occupational Health and Safety Guidelines, the Contractor shall prepare a Contractor's Occupational Health and Safety Management Plan, including details of occupational health and safety procedures to prevent accidents and other OHS related incidents. The Contractor shall abide by all environmental concerns according to the requisite of environmental laws and the Environmental Impact Assessment (EIA). The Contractor shall be given a copy of any relevant EIAs that have been conducted by TANESCO or other entities. Prior to beginning any work activity, a Site-Specific Environmental Management Plan should be completed by the Contractor to determine if adequate measures are in place to prevent and manage environmental likely environmental impacts. TANESCO shall issue guidelines for the preparation of the Contractor's Site-Specific Environmental Management Plan. (b) The project site is located in city area of Dar es Salaam and little adverse impact on natural environment is expected. However, an environmental officer shall be assigned to the project to monitor project construction activities to ensure

Environmental Checklist

Category	Environmental Item	Main Check Items	Yes: Y No: N	Confirmation of Environmental Considerations (Reasons, Mitigation Measures)																										
		(c) If construction activities adversely affect the social environment, are adequate measures considered to reduce impacts?	(c) Y	impacts are mitigated.  (c) The construction activities can affect neighboring shops, residents and schools. According to TANESCO's Contractors' Occupational Health and Safety Guidelines, contractor shall abide by all mitigation measures based on good practice, professionalism and as specified in the Site-Specific Environmental Management Plan, Environmental Impact Assessment (EIA), and/or Environmental Impact Audit.																										
	(2) Monitoring	(a) Does the proponent develop and implement monitoring program for the environmental items that are considered to have potential impacts? (b) What are the items, methods and frequencies of the monitoring program?	(a) Y	(a) As part of the environmental assessment process, an Environmental and Social Monitoring Plan shall be prepared and it shall be implemented by TANESCO.  (b) Items, methods and frequencies of monitoring shall be included in the Environmental and Social Monitoring Plan. In accordance with the project implementation, necessary monitoring should be undertaken with defined frequency and timing during construction and operation stages. Project monitoring activities focus on significant environmental and social concern as follows (provisional): > Construction stage <table border="1" style="margin-left: 20px;"> <tr> <td>Item</td> <td>Permit</td> </tr> <tr> <td></td> <td>Waste</td> </tr> <tr> <td></td> <td>Resettlement</td> </tr> <tr> <td></td> <td>Existing infrastructure</td> </tr> <tr> <td></td> <td>Accident</td> </tr> <tr> <td>Frequency</td> <td>Every month</td> </tr> <tr> <td>Responsible monitoring</td> <td>TANESCO and Contractor</td> </tr> <tr> <td>Reporting</td> <td>TANESCO shall report to NEMC and JICA</td> </tr> <tr> <td>Disclosure</td> <td>Result of monitoring shall be disclosed to the public.</td> </tr> </table> > Operation stage <table border="1" style="margin-left: 20px;"> <tr> <td>Item</td> <td>Waste</td> </tr> <tr> <td></td> <td>Soil and groundwater contamination</td> </tr> <tr> <td></td> <td>Noise</td> </tr> <tr> <td>Frequency</td> <td>Every month for 6 months after construction</td> </tr> </table>	Item	Permit		Waste		Resettlement		Existing infrastructure		Accident	Frequency	Every month	Responsible monitoring	TANESCO and Contractor	Reporting	TANESCO shall report to NEMC and JICA	Disclosure	Result of monitoring shall be disclosed to the public.	Item	Waste		Soil and groundwater contamination		Noise	Frequency	Every month for 6 months after construction
Item	Permit																													
	Waste																													
	Resettlement																													
	Existing infrastructure																													
	Accident																													
Frequency	Every month																													
Responsible monitoring	TANESCO and Contractor																													
Reporting	TANESCO shall report to NEMC and JICA																													
Disclosure	Result of monitoring shall be disclosed to the public.																													
Item	Waste																													
	Soil and groundwater contamination																													
	Noise																													
Frequency	Every month for 6 months after construction																													

*[Handwritten mark]*

*Amulya*

*[Handwritten initials]*

**Environmental Checklist**

Category	Environmental Item	Main Check Items	Yes: Y No: N	Confirmation of Environmental Considerations (Reasons, Mitigation Measures)									
		<p>(c) Does the proponent establish an adequate monitoring framework (organization, personnel, equipment, and adequate budget to sustain the monitoring framework)?</p> <p>(d) Are any regulatory requirements pertaining to the monitoring report system identified, such as the format and frequency of reports from the proponent to the regulatory authorities?</p>	<p>(c) Y</p> <p>(d) Y</p>	<table border="1" style="width: 100%; border-collapse: collapse;"> <tr> <td style="width: 30%;"><b>Responsible monitoring</b></td> <td style="width: 10%; text-align: center;"><b>for</b></td> <td style="width: 60%;">TANESCO</td> </tr> <tr> <td><b>Reporting</b></td> <td></td> <td>TANESCO shall report to NEMC and JICA</td> </tr> <tr> <td><b>Disclosure</b></td> <td></td> <td>Result of monitoring shall be disclosed to the public.</td> </tr> </table> <p>(c) Monitoring framework shall be established in developing the Environmental and Social Monitoring Plan.</p> <p>(d) According to the Environmental Impact Assessment and Audit Regulations, 2005, National Environmental Management Council (NEMC) shall give order to TANESCO for submission of the monitoring reports, if necessary.</p>	<b>Responsible monitoring</b>	<b>for</b>	TANESCO	<b>Reporting</b>		TANESCO shall report to NEMC and JICA	<b>Disclosure</b>		Result of monitoring shall be disclosed to the public.
<b>Responsible monitoring</b>	<b>for</b>	TANESCO											
<b>Reporting</b>		TANESCO shall report to NEMC and JICA											
<b>Disclosure</b>		Result of monitoring shall be disclosed to the public.											