

PART IV

Present Situation



Population Density 2010 in KMA

Legend

Administrative Boundary

Sub-metro Boundary

Conservation

Forest Reserve

2110 Runway

Airport

2100 Road

2104 Single Line Road

Road

5201 (Single Line) River

5101 Wide River

5105 Lake/Pond

5106 Marsh, Swamp

Hydrology

Population Density 2010 in KMA

(person/ha)

3 - 100

101 - 200

201 - 400

401 - 600

601 - 800

801 - 1000

1001 - 3649



1:70,000
0 0.25 0.5 1 1.5 2 2.5 Kilometers

Map Projection:
- Projected Coordinate System: WGS 1984 UTM Zone 30N
- Projection: Transverse Mercator

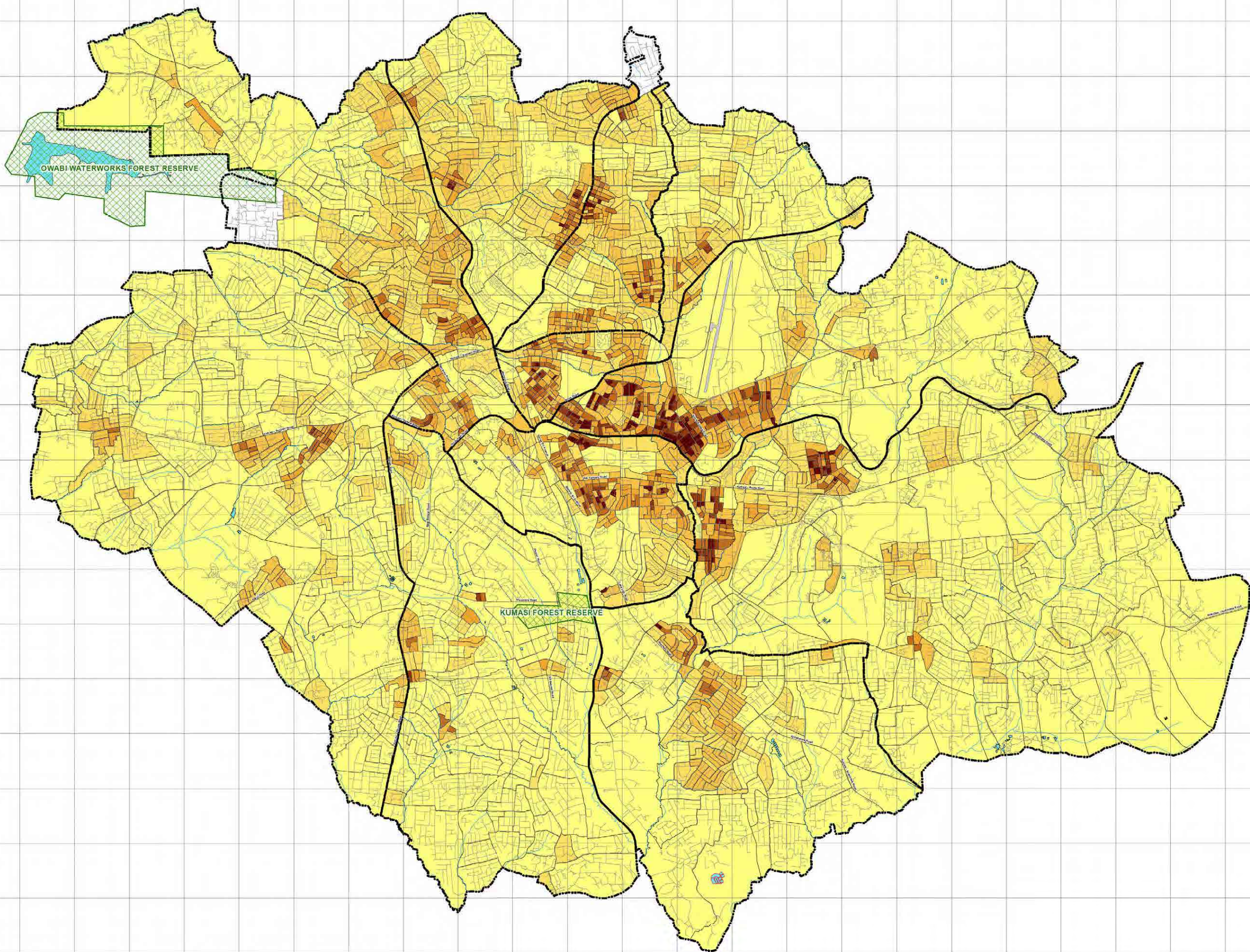
Source:
1) Topographic Map, 1:50,000, SDG, 1972
2) ASTER GDEM Version 2, METI and NASA
3) ALOS AVNIR-2, JAXA, 2008/2011

KUMASI METROPOLITAN AUTHORITY



MINISTRY OF ENVIRONMENT, SCIENCE, TECHNOLOGY AND INNOVATION (MESTI)
TOWN AND COUNTRY PLANNING DEPARTMENT (TCPD)
JAPAN INTERNATIONAL COOPERATION AGENCY (JICA)

ORIENTAL CONSULTANTS Co., Ltd.
CTI ENGINEERING INTERNATIONAL Co., Ltd.
ALMEC CORPORATION



POPULATION DENSITY 2010 IN ASHANTI REGION

LEGEND

- Boundary**
Greater Kumasi Sub-Region
- Population Density (person/km²)**
- 27 - 100
 - 101 - 200
 - 201 - 400
 - 401 - 600
 - 601 - 800
 - 801 - 1000
 - 1001 - 6012



1:750,000
0 2 4 6 8 10 12 14 16 18 20 Kilometers

Map Projection:
- Projected Coordinate System: WGS 1984 UTM Zone 30N
- Projection: Transverse Mercator

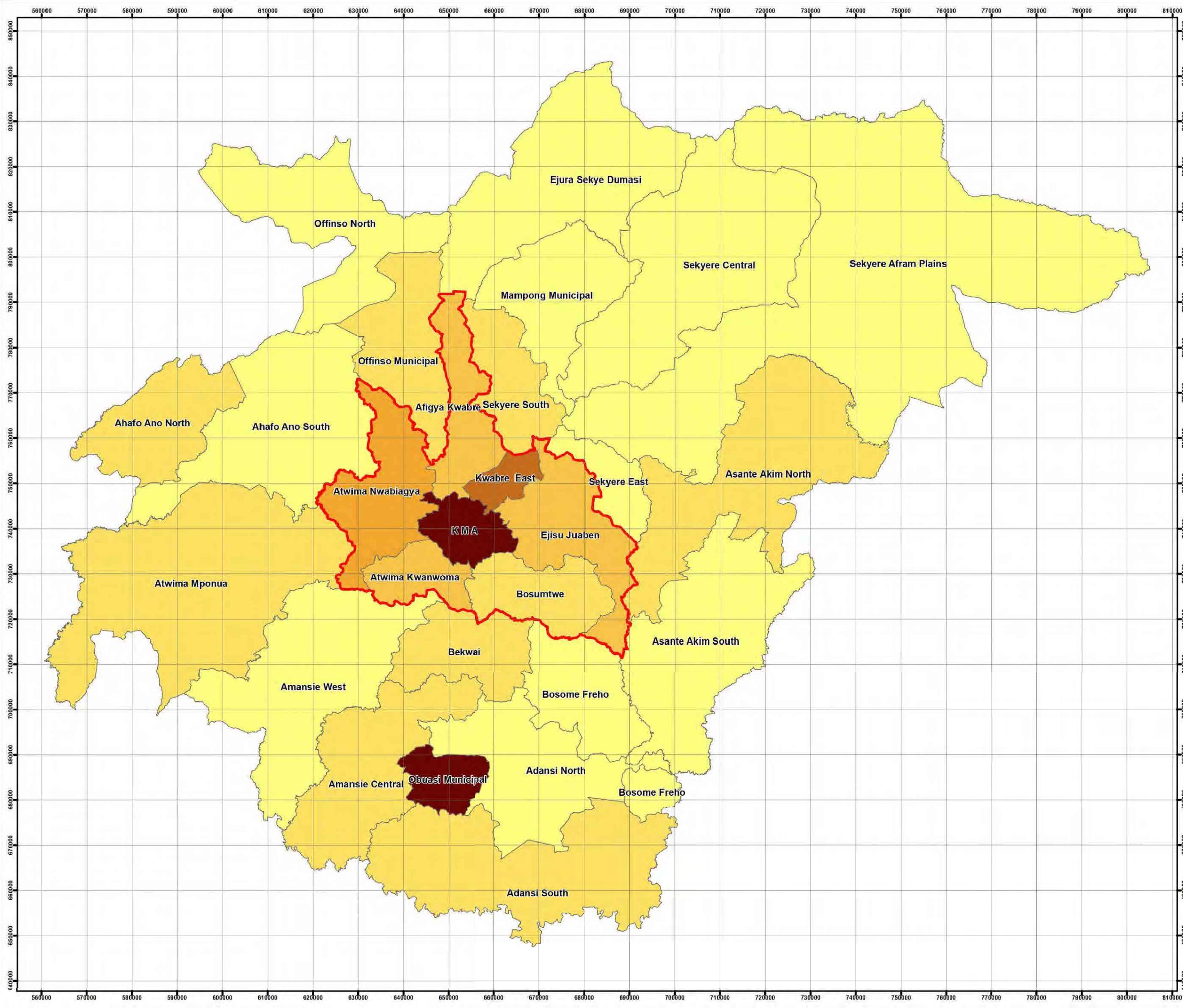
Source:
1) GSS, 2010 Population and Housing Census

ASHANTI REGION



MINISTRY OF ENVIRONMENT, SCIENCE, TECHNOLOGY
AND INNOVATION (MESTI)
TOWN AND COUNTRY PLANNING DEPARTMENT (TCPD)
JAPAN INTERNATIONAL COOPERATION AGENCY (JICA)

ORIENTAL CONSULTANTS Co., Ltd.
CTI ENGINEERING INTERNATIONAL Co., Ltd.
ALMEC CORPORATION



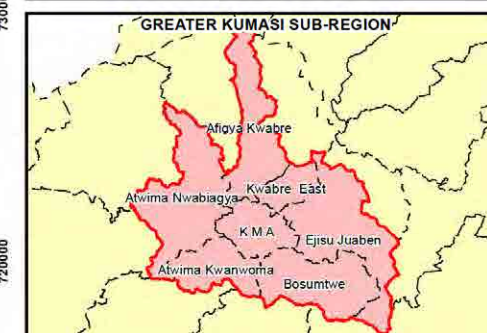
**POPULATION DENSITY 2010
IN
GREATER KUMASI SUB-REGION**

- LEGEND**
- Administrative Boundary
 - District Boundary
 - Population Density (person/ha)
 - 0 - 5
 - 6 - 10
 - 11 - 20
 - 21 - 40
 - 41 - 60
 - 61 - 80
 - 81 - 100
 - 101 - 76000



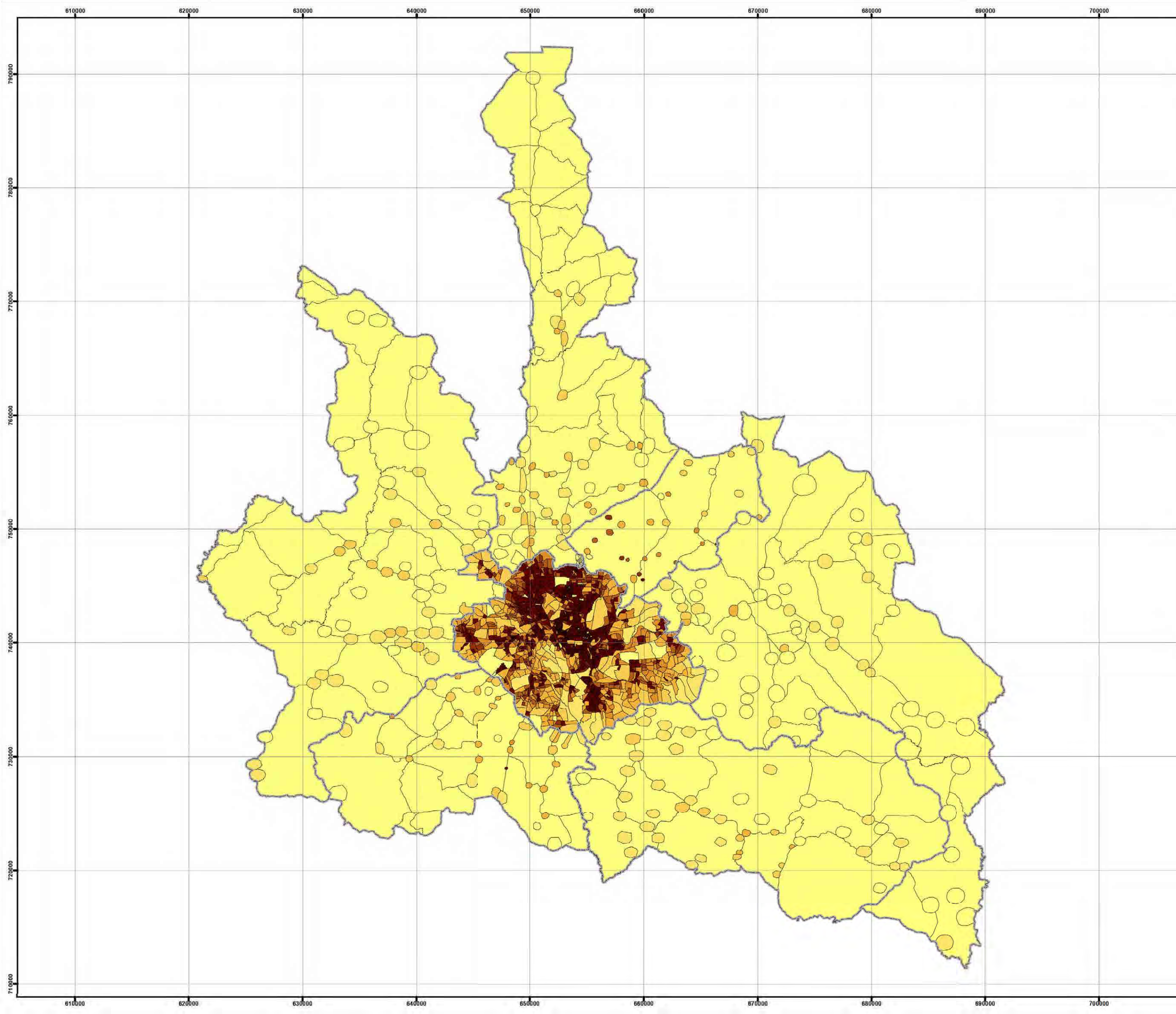
Map Projection:
- Projected Coordinate System: WGS 1984 UTM Zone 30N
- Projection: Transverse Mercator

Source:
1) GSS, 2010 Population and Housing Census



MINISTRY OF ENVIRONMENT, SCIENCE, TECHNOLOGY
AND INNOVATION (MESTI)
TOWN AND COUNTRY PLANNING DEPARTMENT (TCPD)
JAPAN INTERNATIONAL COOPERATION AGENCY (JICA)

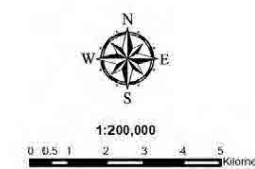
ORIENTAL CONSULTANTS Co., Ltd.
CTI ENGINEERING INTERNATIONAL Co., Ltd.
ALMCE CORPORATION



**WATER SUPPLY PIPELINES
OF
GHANA WATER COMPANY LTD**

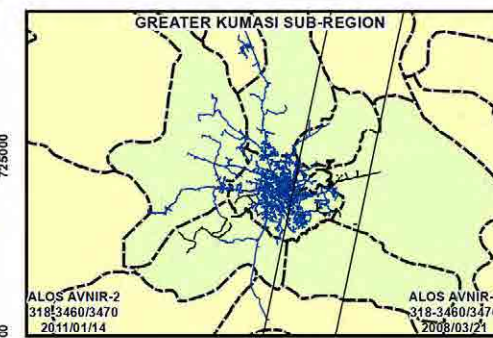
Legend

- Town**
- Major Town
- Administrative Boundary**
- District Boundary
- Water Supply Pipeline Service Status**
- Disabled
- In Use
- Transportation**
- 2300 Railway
- Class 1 Road
- Class 2 Road
- Class 3 Road
- Siding Road
- Track Road
- Trail Road
- Hydrology**
- 5201 (Single Line) River
- Contour**
- Index Contour
- Land Use**
- Forest Reserve
- Lake/Reservoir
- Airport (Runway)
- Settlement



Map Projection:
 - Projected Coordinate System: WGS 1984 UTM Zone 30N
 - Projection: Transverse Mercator

Source:
 1) Water Supply Pipelines, Ghana Water Company Ltd
 2) ALOS AVNIR-2, JAXA, 2008/2011
 3) Topographic Map, 1:50,000, SDG, 1972
 4) ASTER GDEM Version 2, METI and NASA



MINISTRY OF ENVIRONMENT, SCIENCE, TECHNOLOGY
 AND INNOVATION (MESTI)
 TOWN AND COUNTRY PLANNING DEPARTMENT (TCPD)
 JAPAN INTERNATIONAL COOPERATION AGENCY (JICA)

ORIENTAL CONSULTANTS Co., Ltd.
 CTI ENGINEERING INTERNATIONAL Co., Ltd.
 ALMCE CORPORATION

