

18-1

**LAND USE MAP
IN 2008
SCALE 1:10,000
640748**

LEGEND

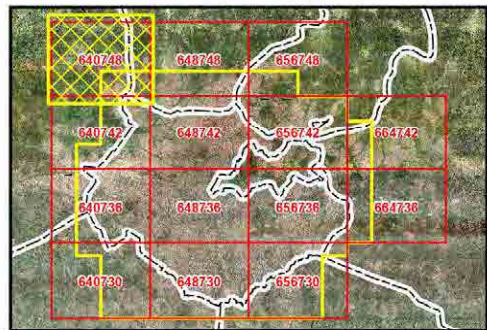
- ~ District Boundary
- Transportation**
- ~ 2300 Railway
- ~ 2104 (Single Line) Road
- Hydrology**
- ~ 5201 (Single Line) River
- ~ 5202 (Single Line) Seasonal River
- Land Use**
- 210100 Main Road
- 210300 Other Road
- 211000 Runway (Airport)
- 300001 Commercial
- 300003 Industrial
- 300004 Educational
- 300005 Institutional
- 300021 High Density Residential
- 300022 Low Density Residential
- 300052 Utilities
- 400100 Cemetery (more than 100m x 100m)
- 400200 Market (more than 40m)
- 400300 Park
- 400400 Open Space/Sports Facility
- 400500 Other Land Use
- 510100 Wide River (more than 20m)
- 510600 Marsh, Swamp (more than 100m x 100m)
- 633000 Forest/Grove/Woodland (more than 100m x 100m)
- 633100 Bush (more than 100m x 100m)
- 633200 Grassland (more than 100m x 100m)
- 633300 Cultivated Field (more than 100m x 100m)



1:25,000
0 0.1 0.2 0.4 0.6 0.8 1 Kilometers

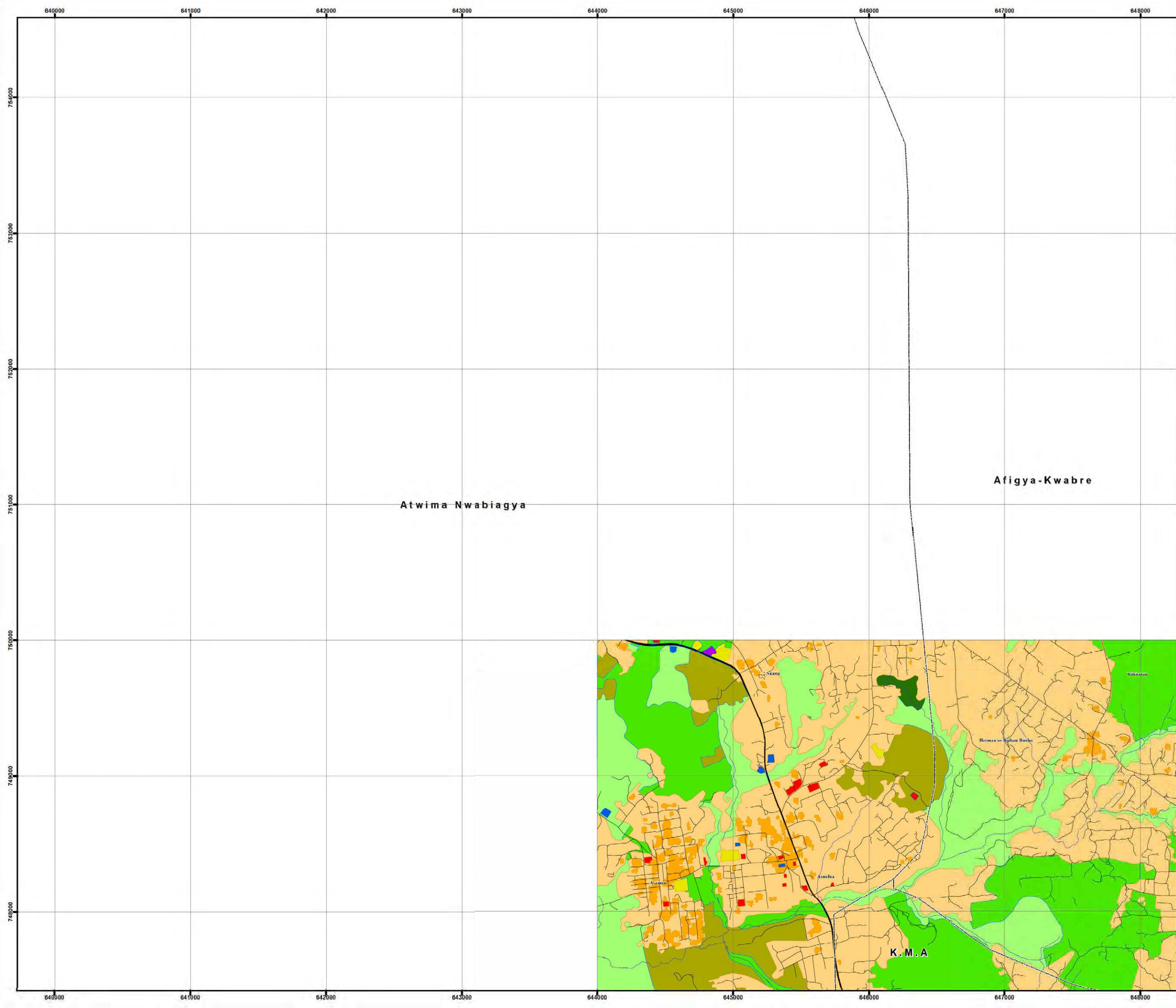
Map Projection:
- Projected Coordinate System: WGS 1984 UTM Zone 30N
- Projection: Transverse Mercator

Source:
1) Ejaz Orthophotomaps, L.A.P. 2008/2009
2) Topographic Map, 1:50,000, SDG, 1972
3) Field Land Use Survey by JICA Study Team, 2012



MINISTRY OF ENVIRONMENT, SCIENCE, TECHNOLOGY
AND INNOVATION (MESTI)
TOWN AND COUNTRY PLANNING DEPARTMENT (TCPD)
JAPAN INTERNATIONAL COOPERATION AGENCY (JICA)

ORIENTAL CONSULTANTS Co., Ltd.
CTI ENGINEERING INTERNATIONAL Co., Ltd.
ALMCE CORPORATION



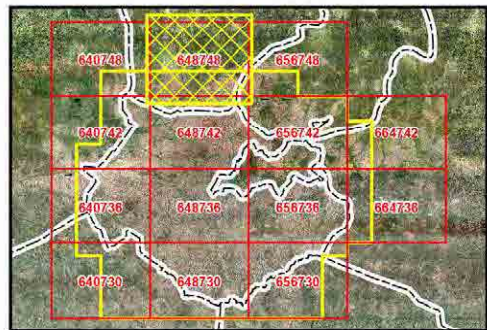
LAND USE MAP
IN 2008
SCALE 1:10,000
648748

- LEGEND**
- ~ District Boundary
 - Transportation**
 - ~ 2300 Railway
 - ~ 2104 (Single Line) Road
 - Hydrology**
 - ~ 5201 (Single Line) River
 - ~ 5202 (Single Line) Seasonal River
 - Land Use**
 - 210100 Main Road
 - 210300 Other Road
 - 211000 Runway (Airport)
 - 300001 Commercial
 - 300003 Industrial
 - 300004 Educational
 - 300005 Institutional
 - 300021 High Density Residential
 - 300022 Low Density Residential
 - 300052 Utilities
 - 400100 Cemetery (more than 100m x 100m)
 - 400200 Market (more than 40m)
 - 400300 Park
 - 400400 Open Space/Sports Facility
 - 400500 Other Land Use
 - 510100 Wide River (more than 20m)
 - 510500 Lake/Pond (more than 20m x 20m)
 - 510600 Marsh, Swamp (more than 100m x 100m)
 - 633000 Forest/Grove/Woodland (more than 100m x 100m)
 - 633100 Bush (more than 100m x 100m)
 - 633200 Grassland (more than 100m x 100m)
 - 633300 Cultivated Field (more than 100m x 100m)



Map Projection:
- Projected Coordinate System: WGS 1984 UTM Zone 30N
- Projection: Transverse Mercator

Source:
1) Ejana Orthophotomaps, L.A.T. 2008/2009
2) Topographic Map, 1:50,000, SDG, 1972
3) Field Land Use Survey by JICA Study Team, 2012



Afigya-Kwabre

Kwabre East

MINISTRY OF ENVIRONMENT, SCIENCE, TECHNOLOGY
AND INNOVATION (MESTI)
TOWN AND COUNTRY PLANNING DEPARTMENT (TCPD)
JAPAN INTERNATIONAL COOPERATION AGENCY (JICA)

ORIENTAL CONSULTANTS Co., Ltd.
CTI ENGINEERING INTERNATIONAL Co., Ltd.
ALMEC CORPORATION

18-3

**LAND USE MAP
IN 2008
SCALE 1:10,000
656748**

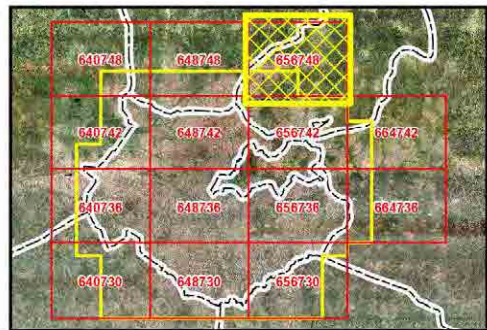
LEGEND

- ~ District Boundary
- Transportation**
- ~ 2300 Railway
- ~ 2104 (Single Line) Road
- Hydrology**
- ~ 5201 (Single Line) River
- ~ 5202 (Single Line) Seasonal River
- Land Use**
- 210100 Main Road
- 210300 Other Road
- 211000 Runway (Airport)
- 300001 Commercial
- 300003 Industrial
- 300004 Educational
- 300005 Institutional
- 300021 High Density Residential
- 300022 Low Density Residential
- 300052 Utilities
- 400100 Cemetery (more than 100m x 100m)
- 400200 Market (more than 40m)
- 400300 Park
- 400400 Open Space/Sports Facility
- 400500 Other Land Use
- 510100 Wide River (more than 20m)
- 510600 Marsh, Swamp (more than 100m x 100m)
- 633000 Forest/Grove/Woodland (more than 100m x 100m)
- 633100 Bush (more than 100m x 100m)
- 633200 Grassland (more than 100m x 100m)
- 633300 Cultivated Field (more than 100m x 100m)



Map Projection:
- Projected Coordinate System: WGS 1984 UTM Zone 30N
- Projection: Transverse Mercator

Source:
1) Ejana Orthophotomaps, L.A.P. 2008/2009
2) Topographic Map, 1:50,000, SDG, 1972
3) Field Land Use Survey by JICA Study Team, 2012

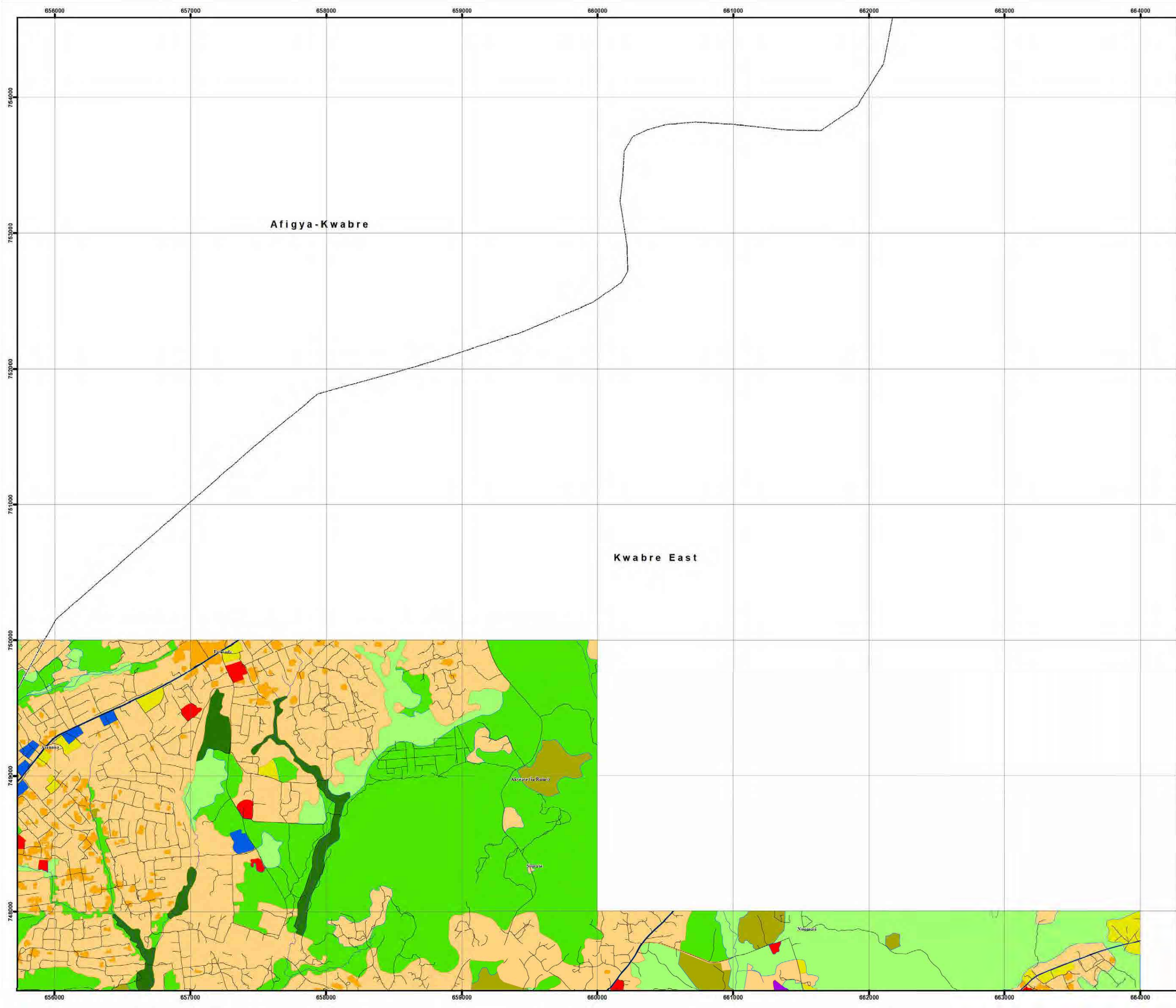


MINISTRY OF ENVIRONMENT, SCIENCE, TECHNOLOGY
AND INNOVATION (MESTI)
TOWN AND COUNTRY PLANNING DEPARTMENT (TCPD)
JAPAN INTERNATIONAL COOPERATION AGENCY (JICA)

ORIENTAL CONSULTANTS Co., Ltd.
CTI ENGINEERING INTERNATIONAL Co., Ltd.
ALMCE CORPORATION

Afigya-Kwabre

Kwabre East



18-4

**LAND USE MAP
IN 2008
SCALE 1:10,000
640742**

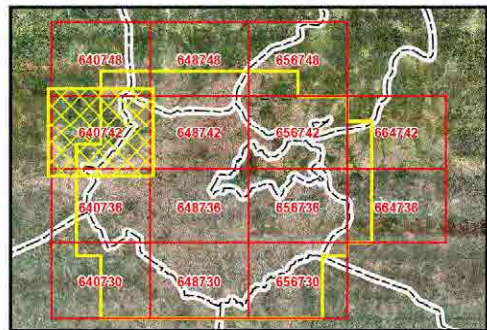
LEGEND

- ~ District Boundary
- Transportation**
- ~ 2300 Railway
- ~ 2104 (Single Line) Road
- Hydrology**
- ~ 5201 (Single Line) River
- ~ 5202 (Single Line) Seasonal River
- Land Use**
- 210100 Main Road
- 210300 Other Road
- 211000 Runway (Airport)
- 300001 Commercial
- 300003 Industrial
- 300004 Educational
- 300005 Institutional
- 300021 High Density Residential
- 300022 Low Density Residential
- 300052 Utilities
- 400100 Cemetery (more than 100m x 100m)
- 400200 Market (more than 40m)
- 400300 Park
- 400400 Open Space/Sports Facility
- 400500 Other Land Use
- 510100 Wide River (more than 20m)
- 510500 Lake/Pond (more than 20m x 20m)
- 510600 Marsh, Swamp (more than 100m x 100m)
- 633000 Forest/Grove/Woodland (more than 100m x 100m)
- 633100 Bush (more than 100m x 100m)
- 633200 Grassland (more than 100m x 100m)
- 633300 Cultivated Field (more than 100m x 100m)



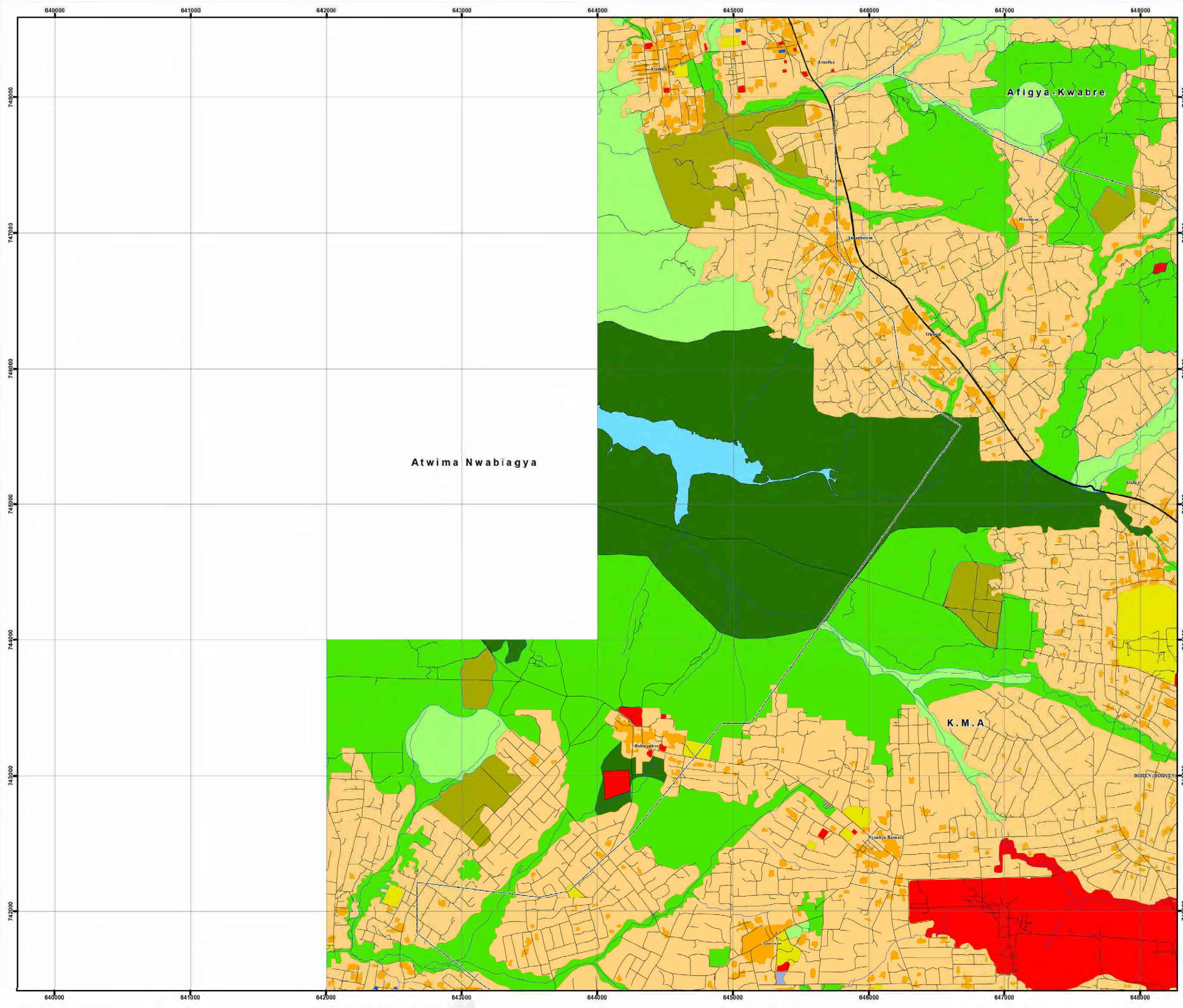
Map Projection:
- Projected Coordinate System: WGS 1984 UTM Zone 30N
- Projection: Transverse Mercator

Source:
1) Ejana Orthophotomaps, L.A.P. 2008/2009
2) Topographic Map, 1:50,000, SDG, 1972
3) Field Land Use Survey by JICA Study Team, 2012



MINISTRY OF ENVIRONMENT, SCIENCE, TECHNOLOGY
AND INNOVATION (MESTI)
TOWN AND COUNTRY PLANNING DEPARTMENT (TCPD)
JAPAN INTERNATIONAL COOPERATION AGENCY (JICA)

ORIENTAL CONSULTANTS Co., Ltd.
CTI ENGINEERING INTERNATIONAL Co., Ltd.
ALMEC CORPORATION



LAND USE MAP
IN 2008
SCALE 1:10,000
648742

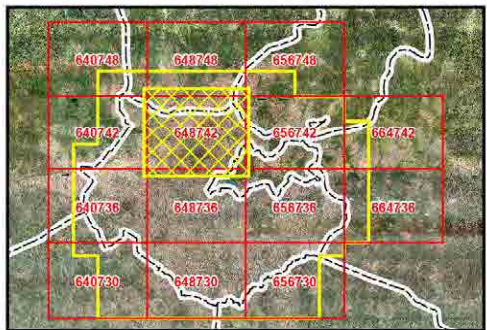
- LEGEND**
- ~ District Boundary
 - Transportation**
 - ~ 2300 Railway
 - ~ 2104 (Single Line) Road
 - Hydrology**
 - ~ 5201 (Single Line) River
 - ~ 5202 (Single Line) Seasonal River
 - Land Use**
 - 210100 Main Road
 - 210300 Other Road
 - 211000 Runway (Airport)
 - 300001 Commercial
 - 300003 Industrial
 - 300004 Educational
 - 300005 Institutional
 - 300021 High Density Residential
 - 300022 Low Density Residential
 - 300052 Utilities
 - 400100 Cemetery (more than 100m x 100m)
 - 400200 Market (more than 40m)
 - 400300 Park
 - 400400 Open Space/Sports Facility
 - 400500 Other Land Use
 - 510100 Wide River (more than 20m)
 - 510500 Lake/Pond (more than 20m x 20m)
 - 510600 Marsh, Swamp (more than 100m x 100m)
 - 633000 Forest/Grove/Woodland (more than 100m x 100m)
 - 633100 Bush (more than 100m x 100m)
 - 633200 Grassland (more than 100m x 100m)
 - 633300 Cultivated Field (more than 100m x 100m)



1:25,000
0 0.1 0.2 0.4 0.6 0.8 1 Kilometers

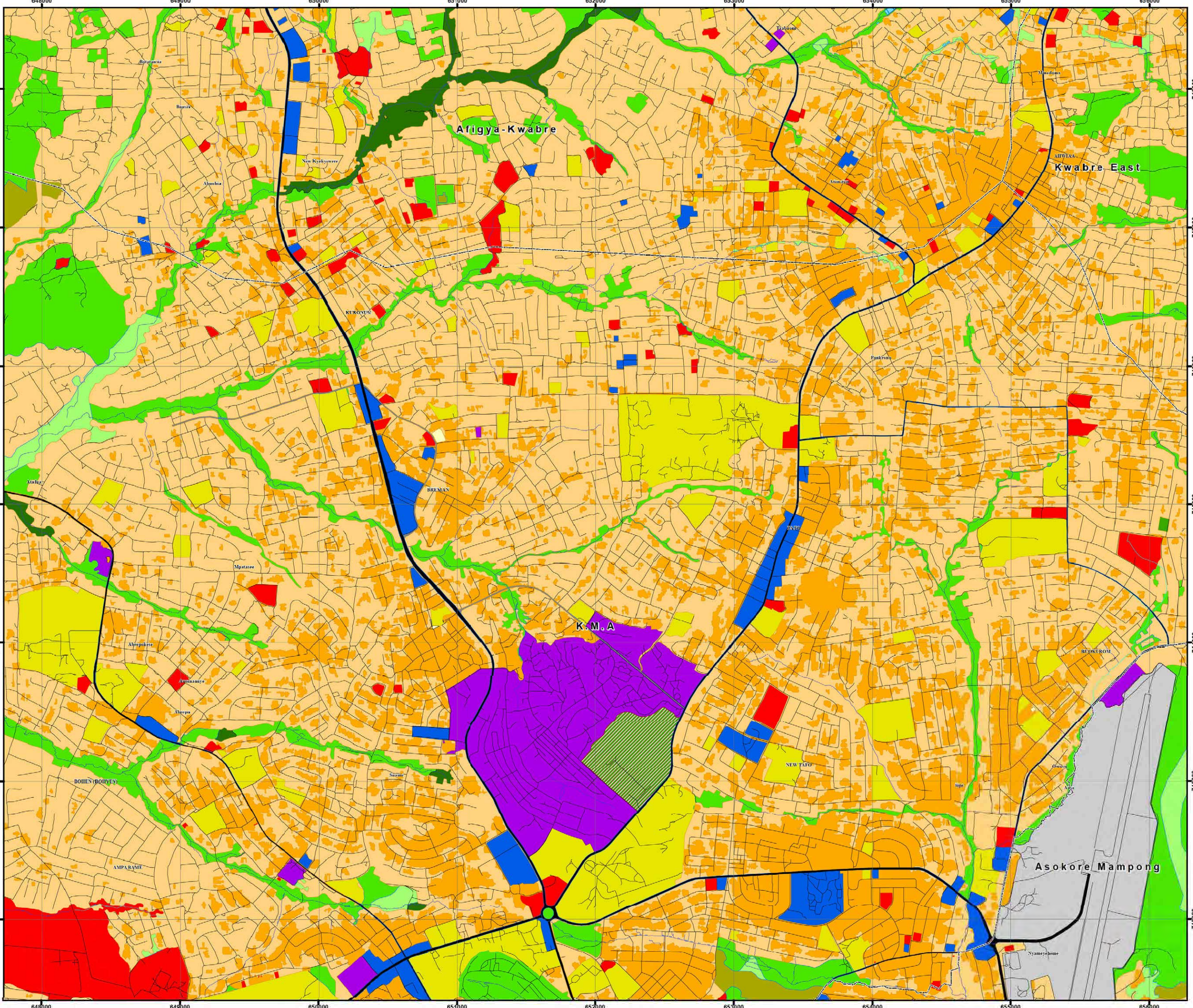
Map Projection:
- Projected Coordinate System: WGS 1984 UTM Zone 30N
- Projection: Transverse Mercator

Source:
1) Ejaz Orthophotomaps, L.A.P. 2008/2009
2) Topographic Map, 1:50,000, SDG, 1972
3) Field Land Use Survey by JICA Study Team, 2012



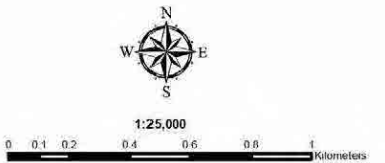
MINISTRY OF ENVIRONMENT, SCIENCE, TECHNOLOGY
AND INNOVATION (MESTI)
TOWN AND COUNTRY PLANNING DEPARTMENT (TCPD)
JAPAN INTERNATIONAL COOPERATION AGENCY (JICA)

ORIENTAL CONSULTANTS Co., Ltd.
CTI ENGINEERING INTERNATIONAL Co., Ltd.
ALMEC CORPORATION



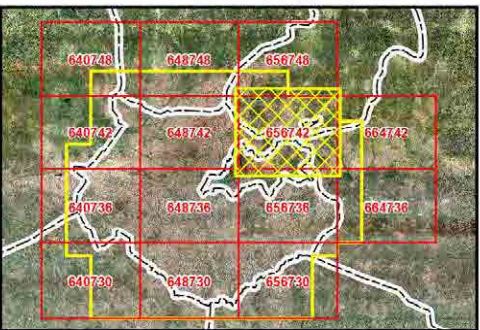
LAND USE MAP
IN 2008
SCALE 1:10,000
656742

- LEGEND**
- ~ District Boundary
 - Transportation**
 - ~ 2300 Railway
 - ~ 2104 (Single Line) Road
 - Hydrology**
 - ~ 5201 (Single Line) River
 - ~ 5202 (Single Line) Seasonal River
 - Land Use**
 - 210100 Main Road
 - 210300 Other Road
 - 211000 Runway (Airport)
 - 300001 Commercial
 - 300003 Industrial
 - 300004 Educational
 - 300005 Institutional
 - 300021 High Density Residential
 - 300022 Low Density Residential
 - 300052 Utilities
 - 400100 Cemetery (more than 100m x 100m)
 - 400200 Market (more than 40m)
 - 400300 Park
 - 400400 Open Space/Sports Facility
 - 400500 Other Land Use
 - 510100 Wide River (more than 20m)
 - 510500 Lake/Pond (more than 20m x 20m)
 - 510600 Marsh, Swamp (more than 100m x 100m)
 - 633000 Forest/Grove/Woodland (more than 100m x 100m)
 - 633100 Bush (more than 100m x 100m)
 - 633200 Grassland (more than 100m x 100m)
 - 633300 Cultivated Field (more than 100m x 100m)



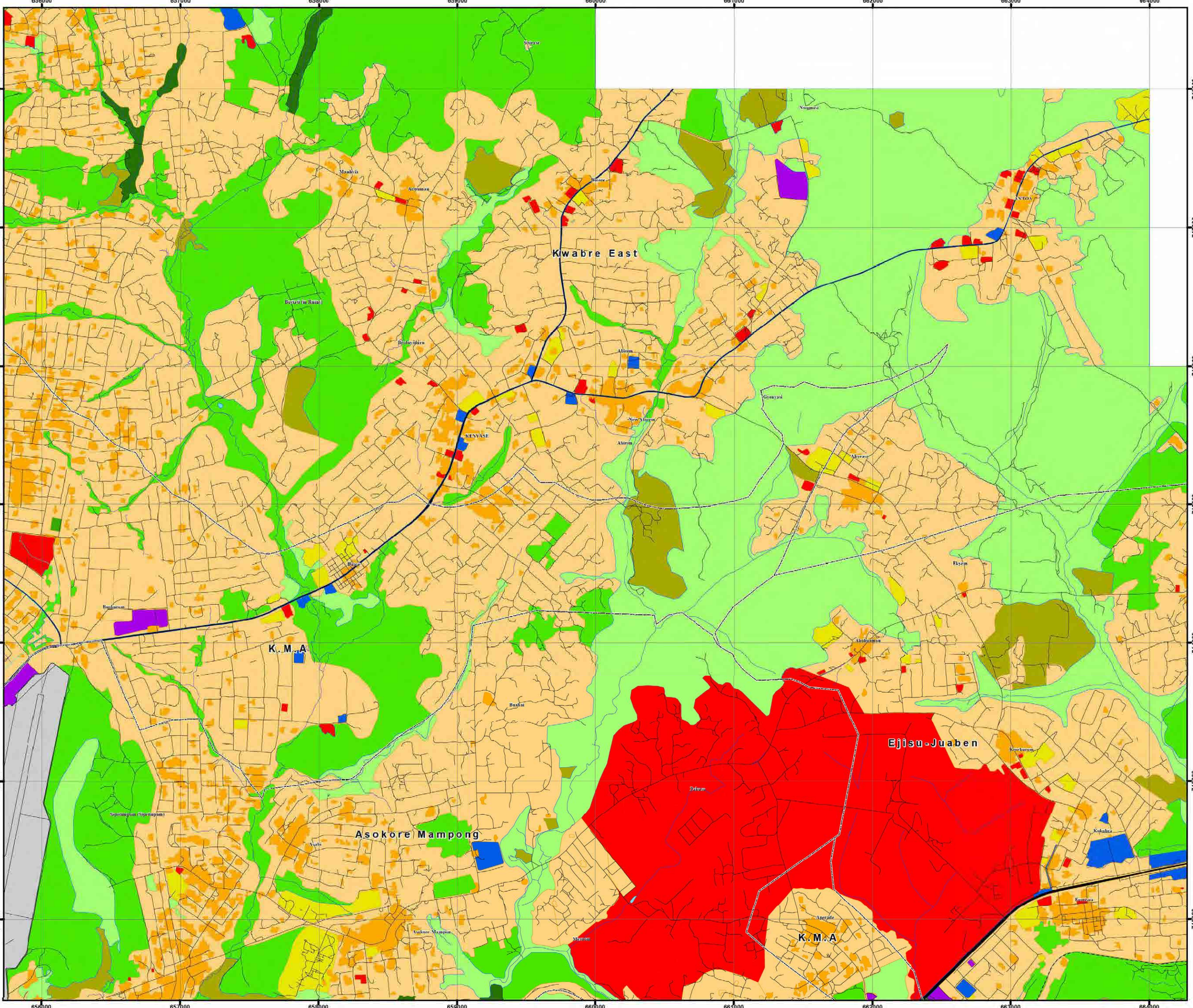
Map Projection:
- Projected Coordinate System: WGS 1984 UTM Zone 30N
- Projection: Transverse Mercator

Source:
1) Ejisu Orthophotomaps, L.A.P. 2008/2009
2) Topographic Map, 1:50,000, SDG, 1972
3) Field Land Use Survey by JICA Study Team, 2012



MINISTRY OF ENVIRONMENT, SCIENCE, TECHNOLOGY
AND INNOVATION (MESTI)
TOWN AND COUNTRY PLANNING DEPARTMENT (TCPD)
JAPAN INTERNATIONAL COOPERATION AGENCY (JICA)

ORIENTAL CONSULTANTS Co., Ltd.
CTI ENGINEERING INTERNATIONAL Co., Ltd.
ALMCE CORPORATION



18-7

**LAND USE MAP
IN 2008
SCALE 1:10,000
664742**

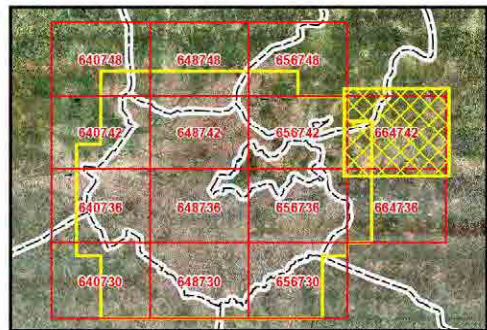
LEGEND

- ~ District Boundary
- Transportation**
- ~ 2300 Railway
- ~ 2104 (Single Line) Road
- Hydrology**
- ~ 5201 (Single Line) River
- ~ 5202 (Single Line) Seasonal River
- Land Use**
- 210100 Main Road
- 210300 Other Road
- 211000 Runway (Airport)
- 300001 Commercial
- 300003 Industrial
- 300004 Educational
- 300005 Institutional
- 300021 High Density Residential
- 300022 Low Density Residential
- 300052 Utilities
- 400100 Cemetery (more than 100m x 100m)
- 400200 Market (more than 40m)
- 400300 Park
- 400400 Open Space/Sports Facility
- 400500 Other Land Use
- 510100 Wide River (more than 20m)
- 510500 Lake/Pond (more than 20m x 20m)
- 510600 Marsh, Swamp (more than 100m x 100m)
- 633000 Forest/Grove/Woodland (more than 100m x 100m)
- 633100 Bush (more than 100m x 100m)
- 633200 Grassland (more than 100m x 100m)
- 633300 Cultivated Field (more than 100m x 100m)



Map Projection:
- Projected Coordinate System: WGS 1984 UTM Zone 30N
- Projection: Transverse Mercator

Source:
1) Ejisu Orthophotomaps, L.A.P. 2008/2009
2) Topographic Map, 1:50,000, SDG, 1972
3) Field Land Use Survey by JICA Study Team, 2012

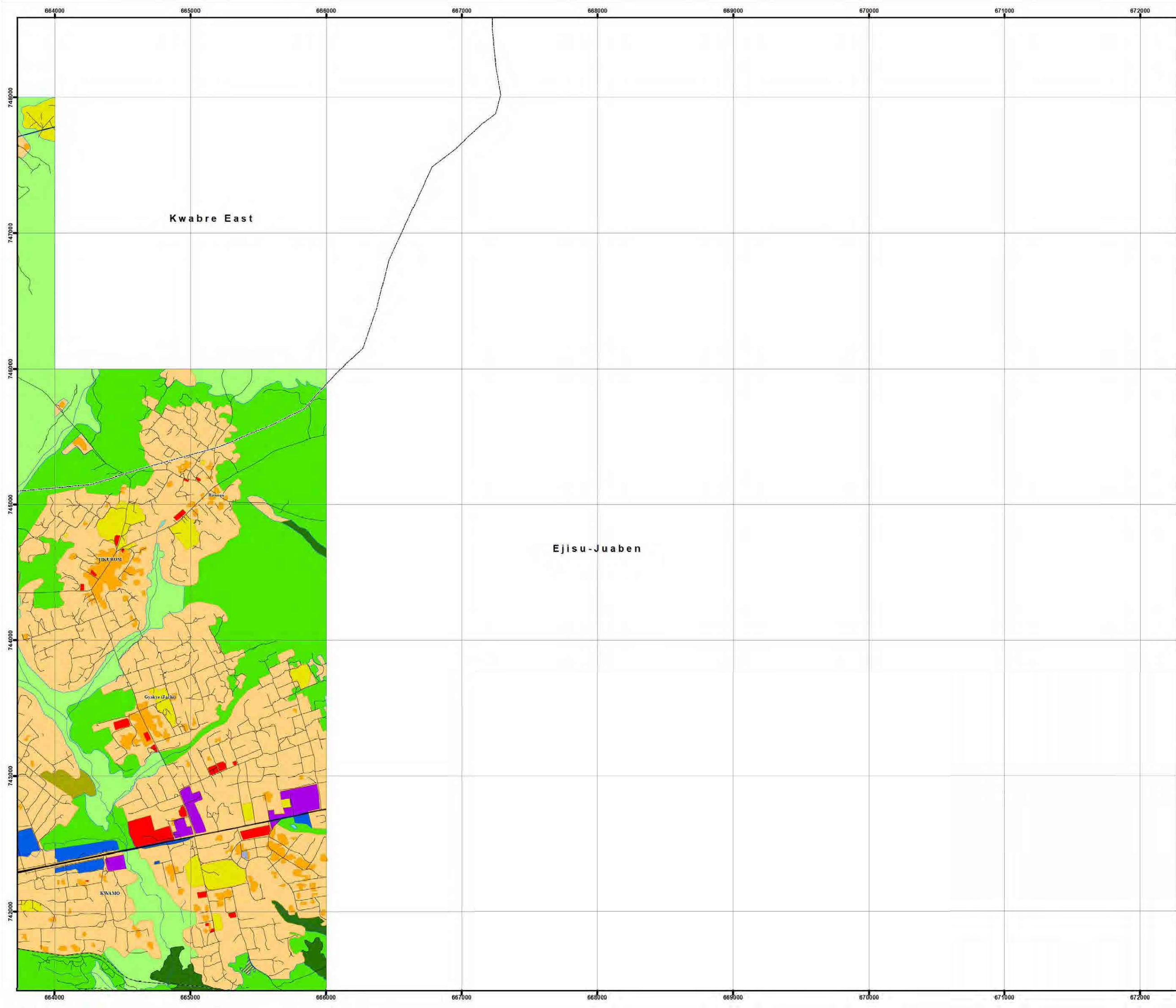


MINISTRY OF ENVIRONMENT, SCIENCE, TECHNOLOGY
AND INNOVATION (MESTI)
TOWN AND COUNTRY PLANNING DEPARTMENT (TCPD)
JAPAN INTERNATIONAL COOPERATION AGENCY (JICA)

ORIENTAL CONSULTANTS Co., Ltd.
CTI ENGINEERING INTERNATIONAL Co., Ltd.
ALMCE CORPORATION

Kwabre East

Ejisu-Juaben



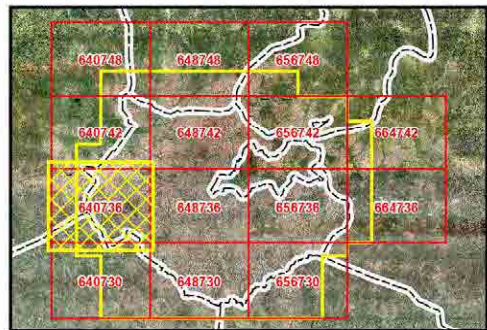
LAND USE MAP
IN 2008
SCALE 1:10,000
640736

- LEGEND**
- ~ District Boundary
 - Transportation**
 - ~ 2300 Railway
 - ~ 2104 (Single Line) Road
 - Hydrology**
 - ~ 5201 (Single Line) River
 - ~ 5202 (Single Line) Seasonal River
 - Land Use**
 - 210100 Main Road
 - 210300 Other Road
 - 211000 Runway (Airport)
 - 300001 Commercial
 - 300003 Industrial
 - 300004 Educational
 - 300005 Institutional
 - 300021 High Density Residential
 - 300022 Low Density Residential
 - 300052 Utilities
 - 400100 Cemetery (more than 100m x 100m)
 - 400200 Market (more than 40m)
 - 400300 Park
 - 400400 Open Space/Sports Facility
 - 400500 Other Land Use
 - 510100 Wide River (more than 20m)
 - 510500 Lake/Pond (more than 20m x 20m)
 - 510600 Marsh, Swamp (more than 100m x 100m)
 - 633000 Forest/Grove/Woodland (more than 100m x 100m)
 - 633100 Bush (more than 100m x 100m)
 - 633200 Grassland (more than 100m x 100m)
 - 633300 Cultivated Field (more than 100m x 100m)



Map Projection:
- Projected Coordinate System: WGS 1984 UTM Zone 30N
- Projection: Transverse Mercator

Source:
1) Ejiofor Orthophotomaps, L.A.P. 2008/2009
2) Topographic Map, 1:50,000, SDG, 1972
3) Field Land Use Survey by JICA Study Team, 2012



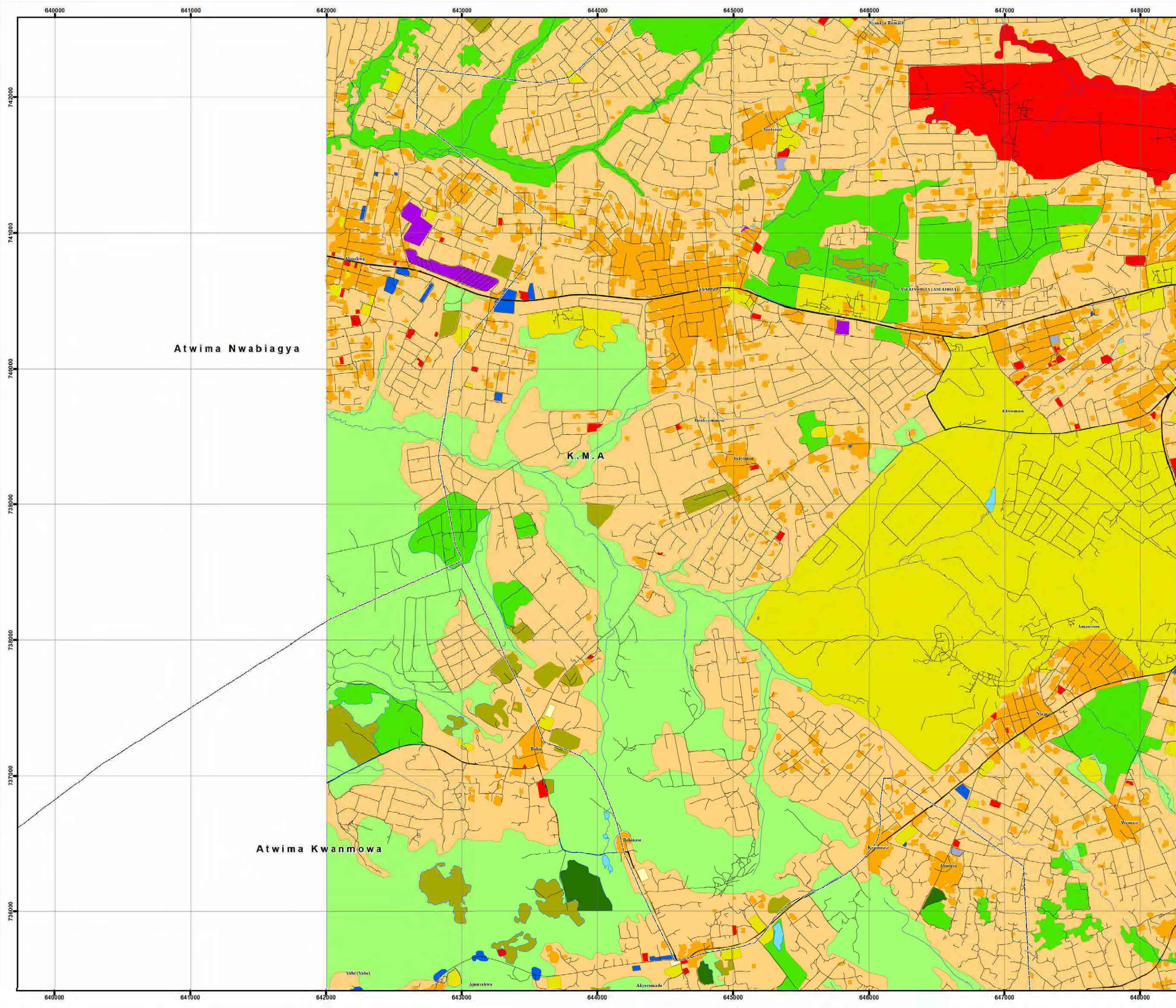
MINISTRY OF ENVIRONMENT, SCIENCE, TECHNOLOGY
AND INNOVATION (MESTI)
TOWN AND COUNTRY PLANNING DEPARTMENT (TCPD)
JAPAN INTERNATIONAL COOPERATION AGENCY (JICA)

ORIENTAL CONSULTANTS Co., Ltd.
CTI ENGINEERING INTERNATIONAL Co., Ltd.
ALMEC CORPORATION

Atwima Nwabiagya

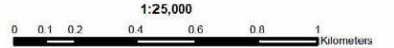
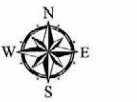
K.M.A

Atwima Kwanmowa



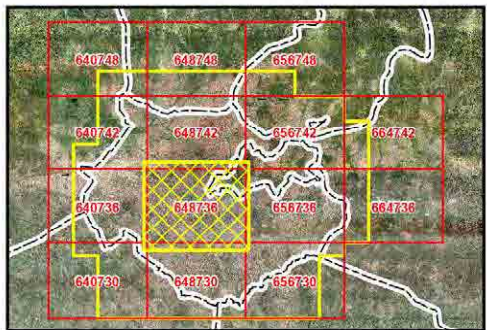
LAND USE MAP
IN 2008
SCALE 1:10,000
648736

- LEGEND**
- ~ District Boundary
 - Transportation**
 - ~ 2300 Railway
 - ~ 2104 (Single Line) Road
 - Hydrology**
 - ~ 5201 (Single Line) River
 - ~ 5202 (Single Line) Seasonal River
 - Land Use**
 - 210100 Main Road
 - 210300 Other Road
 - 211000 Runway (Airport)
 - 300001 Commercial
 - 300003 Industrial
 - 300004 Educational
 - 300005 Institutional
 - 300021 High Density Residential
 - 300022 Low Density Residential
 - 300052 Utilities
 - 400100 Cemetery (more than 100m x 100m)
 - 400200 Market (more than 40m)
 - 400300 Park
 - 400400 Open Space/Sports Facility
 - 400500 Other Land Use
 - 510100 Wide River (more than 20m)
 - 510500 Lake/Pond (more than 20m x 20m)
 - 510600 Marsh, Swamp (more than 100m x 100m)
 - 633000 Forest/Grove/Woodland (more than 100m x 100m)
 - 633100 Bush (more than 100m x 100m)
 - 633200 Grassland (more than 100m x 100m)
 - 633300 Cultivated Field (more than 100m x 100m)



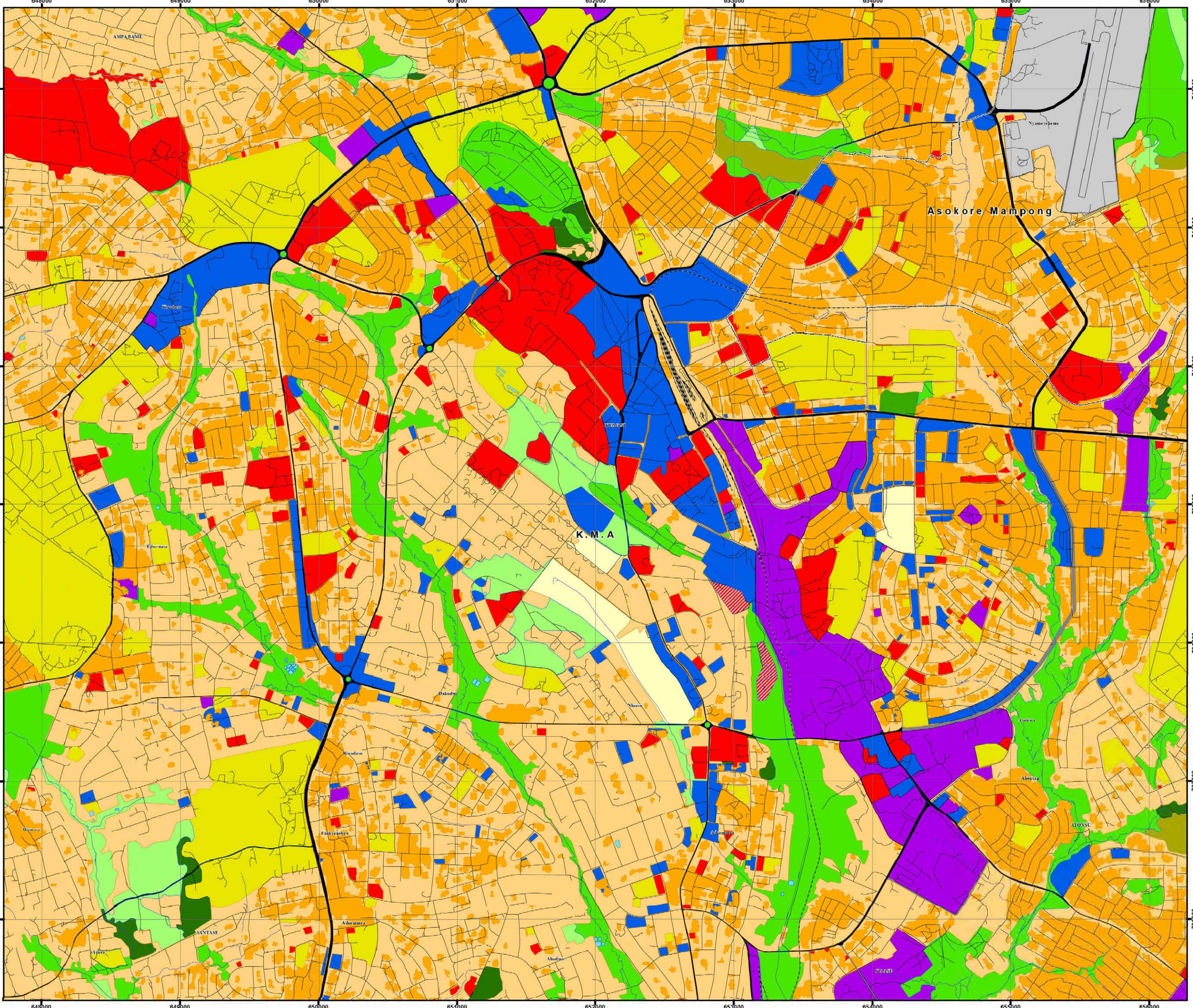
Map Projection:
- Projected Coordinate System: WGS 1984 UTM Zone 30N
- Projection: Transverse Mercator

Source:
1) Ejaz Orthophotomaps, L.A.P. 2008/2009
2) Topographic Map, 1:50,000, SDG, 1972
3) Field Land Use Survey by JICA Study Team, 2012



MINISTRY OF ENVIRONMENT, SCIENCE, TECHNOLOGY
AND INNOVATION (MESTI)
TOWN AND COUNTRY PLANNING DEPARTMENT (TCPD)
JAPAN INTERNATIONAL COOPERATION AGENCY (JICA)

ORIENTAL CONSULTANTS Co., Ltd.
CTI ENGINEERING INTERNATIONAL Co., Ltd.
ALMCE CORPORATION



LAND USE MAP
IN 2008
SCALE 1:10,000
656736

- LEGEND**
- ~ District Boundary
 - Transportation**
 - ~ 2300 Railway
 - ~ 2104 (Single Line) Road
 - Hydrology**
 - ~ 5201 (Single Line) River
 - ~ 5202 (Single Line) Seasonal River
 - Land Use**
 - 210100 Main Road
 - 210300 Other Road
 - 211000 Runway (Airport)
 - 300001 Commercial
 - 300003 Industrial
 - 300004 Educational
 - 300005 Institutional
 - 300021 High Density Residential
 - 300022 Low Density Residential
 - 300052 Utilities
 - 400100 Cemetery (more than 100m x 100m)
 - 400200 Market (more than 40m)
 - 400300 Park
 - 400400 Open Space/Sports Facility
 - 400500 Other Land Use
 - 510100 Wide River (more than 20m)
 - 510500 Lake/Pond (more than 20m x 20m)
 - 510600 Marsh, Swamp (more than 100m x 100m)
 - 633000 Forest/Grove/Woodland (more than 100m x 100m)
 - 633100 Bush (more than 100m x 100m)
 - 633200 Grassland (more than 100m x 100m)
 - 633300 Cultivated Field (more than 100m x 100m)



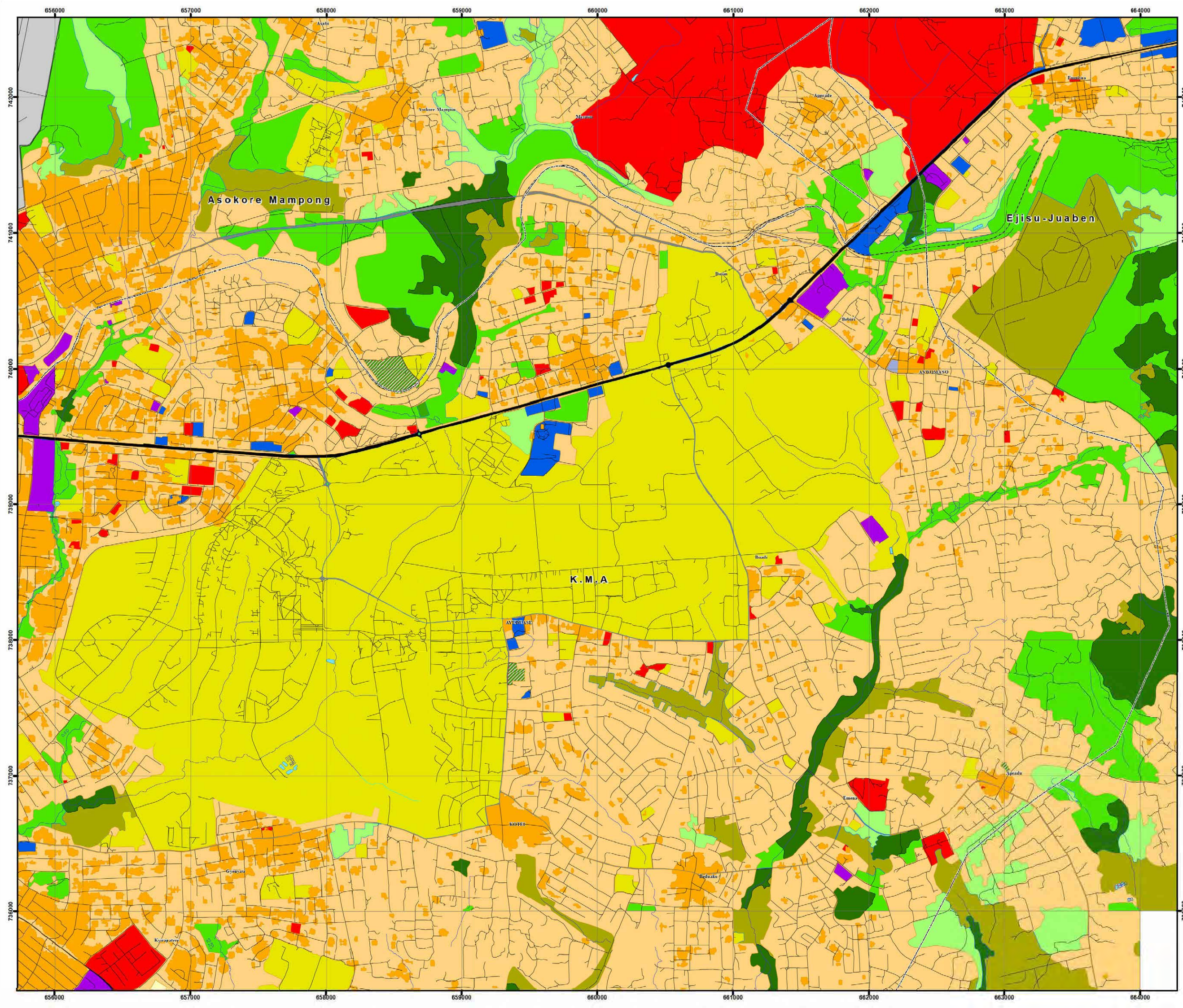
Map Projection:
- Projected Coordinate System: WGS 1984 UTM Zone 30N
- Projection: Transverse Mercator

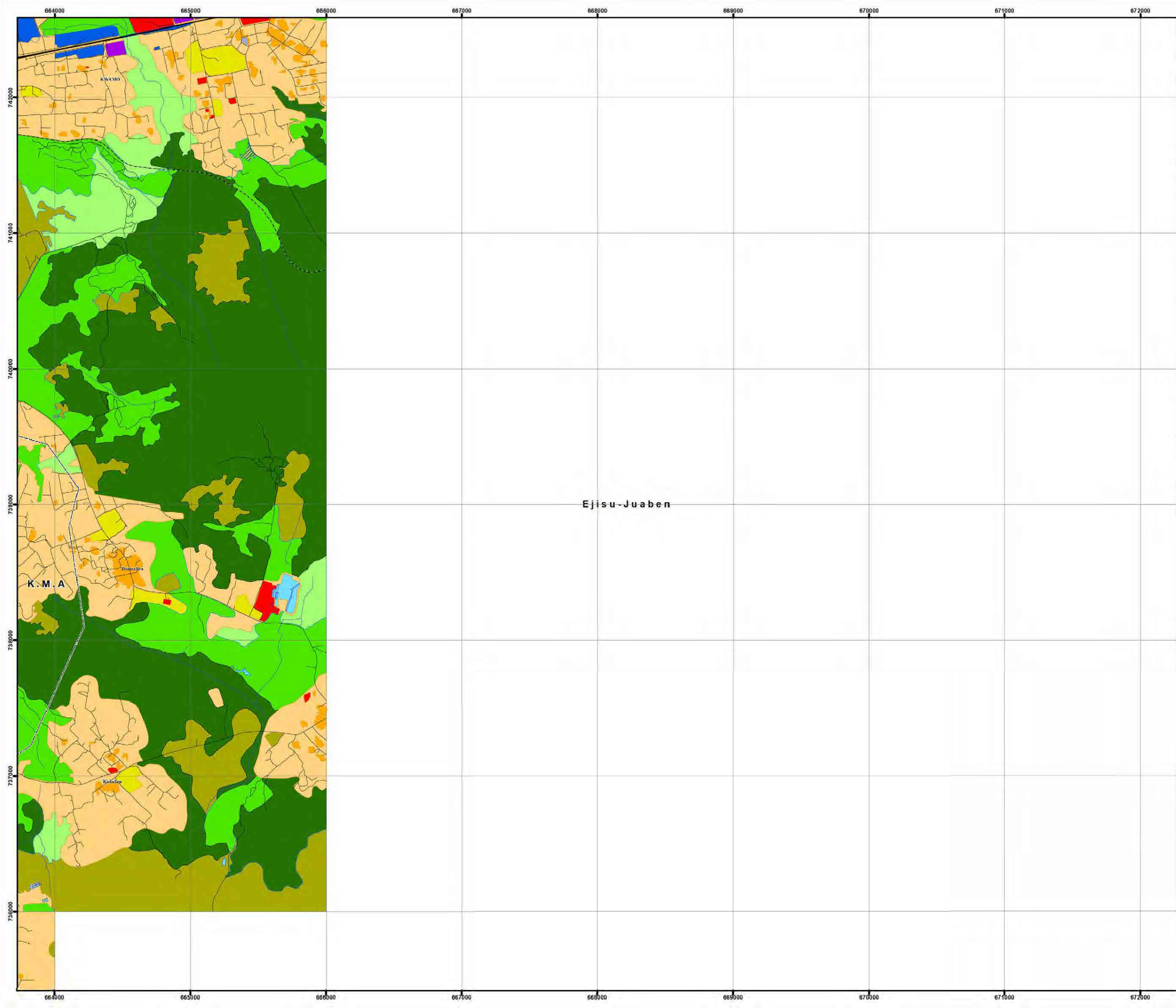
Source:
1) Ejisu Orthophotomaps, L.A.P. 2008/2009
2) Topographic Map, 1:50,000, SDG, 1972
3) Field Land Use Survey by JICA Study Team, 2012



MINISTRY OF ENVIRONMENT, SCIENCE, TECHNOLOGY
AND INNOVATION (MESTI)
TOWN AND COUNTRY PLANNING DEPARTMENT (TCPD)
JAPAN INTERNATIONAL COOPERATION AGENCY (JICA)

ORIENTAL CONSULTANTS Co., Ltd.
CTI ENGINEERING INTERNATIONAL Co., Ltd.
ALMEC CORPORATION

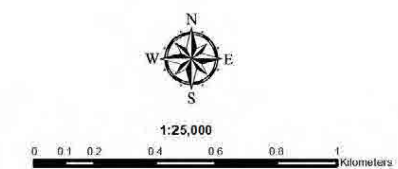




18-11

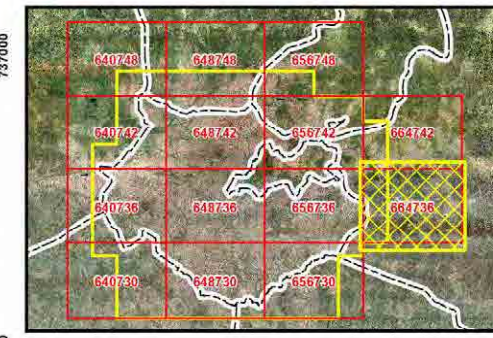
**LAND USE MAP
IN 2008
SCALE 1:10,000
664736**

- LEGEND**
- ~ District Boundary
 - Transportation**
 - ~ 2300 Railway
 - ~ 2104 (Single Line) Road
 - Hydrology**
 - ~ 5201 (Single Line) River
 - ~ 5202 (Single Line) Seasonal River
 - Land Use**
 - 210100 Main Road
 - 210300 Other Road
 - 211000 Runway (Airport)
 - 300001 Commercial
 - 300003 Industrial
 - 300004 Educational
 - 300005 Institutional
 - 300021 High Density Residential
 - 300022 Low Density Residential
 - 300052 Utilities
 - 400100 Cemetery (more than 100m x 100m)
 - 400200 Market (more than 40m)
 - 400300 Park
 - 400400 Open Space/Sports Facility
 - 400500 Other Land Use
 - 510100 Wide River (more than 20m)
 - 510500 Lake/Pond (more than 20m x 20m)
 - 510600 Marsh, Swamp (more than 100m x 100m)
 - 633000 Forest/Grove/Woodland (more than 100m x 100m)
 - 633100 Bush (more than 100m x 100m)
 - 633200 Grassland (more than 100m x 100m)
 - 633300 Cultivated Field (more than 100m x 100m)



Map Projection:
 - Projected Coordinate System: WGS 1984 UTM Zone 30N
 - Projection: Transverse Mercator

Source:
 1) Ejisu Orthophotomaps, L.A.P. 2008/2009
 2) Topographic Map, 1:50,000, SDG, 1972
 3) Field Land Use Survey by JICA Study Team, 2012



MINISTRY OF ENVIRONMENT, SCIENCE, TECHNOLOGY
AND INNOVATION (MESTI)
TOWN AND COUNTRY PLANNING DEPARTMENT (TCPD)
JAPAN INTERNATIONAL COOPERATION AGENCY (JICA)

ORIENTAL CONSULTANTS Co., Ltd.
CTI ENGINEERING INTERNATIONAL Co., Ltd.
ALMCE CORPORATION

18-12

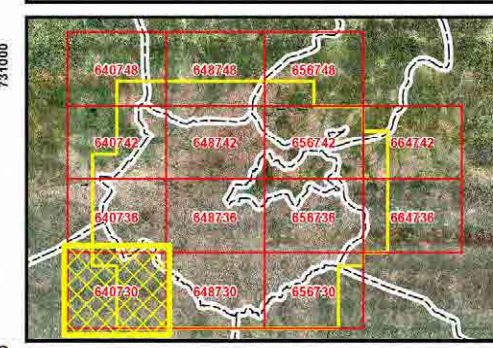
**LAND USE MAP
IN 2008
SCALE 1:10,000
640730**

- LEGEND**
- ~ District Boundary
 - Transportation**
 - ~ 2300 Railway
 - ~ 2104 (Single Line) Road
 - Hydrology**
 - ~ 5201 (Single Line) River
 - ~ 5202 (Single Line) Seasonal River
 - Land Use**
 - 210100 Main Road
 - 210300 Other Road
 - 211000 Runway (Airport)
 - 300001 Commercial
 - 300003 Industrial
 - 300004 Educational
 - 300005 Institutional
 - 300021 High Density Residential
 - 300022 Low Density Residential
 - 300052 Utilities
 - 400100 Cemetery (more than 100m x 100m)
 - 400200 Market (more than 40m)
 - 400300 Park
 - 400400 Open Space/Sports Facility
 - 400500 Other Land Use
 - 510100 Wide River (more than 20m)
 - 510500 Lake/Pond (more than 20m x 20m)
 - 510600 Marsh, Swamp (more than 100m x 100m)
 - 633000 Forest/Grove/Woodland (more than 100m x 100m)
 - 633100 Bush (more than 100m x 100m)
 - 633200 Grassland (more than 100m x 100m)
 - 633300 Cultivated Field (more than 100m x 100m)



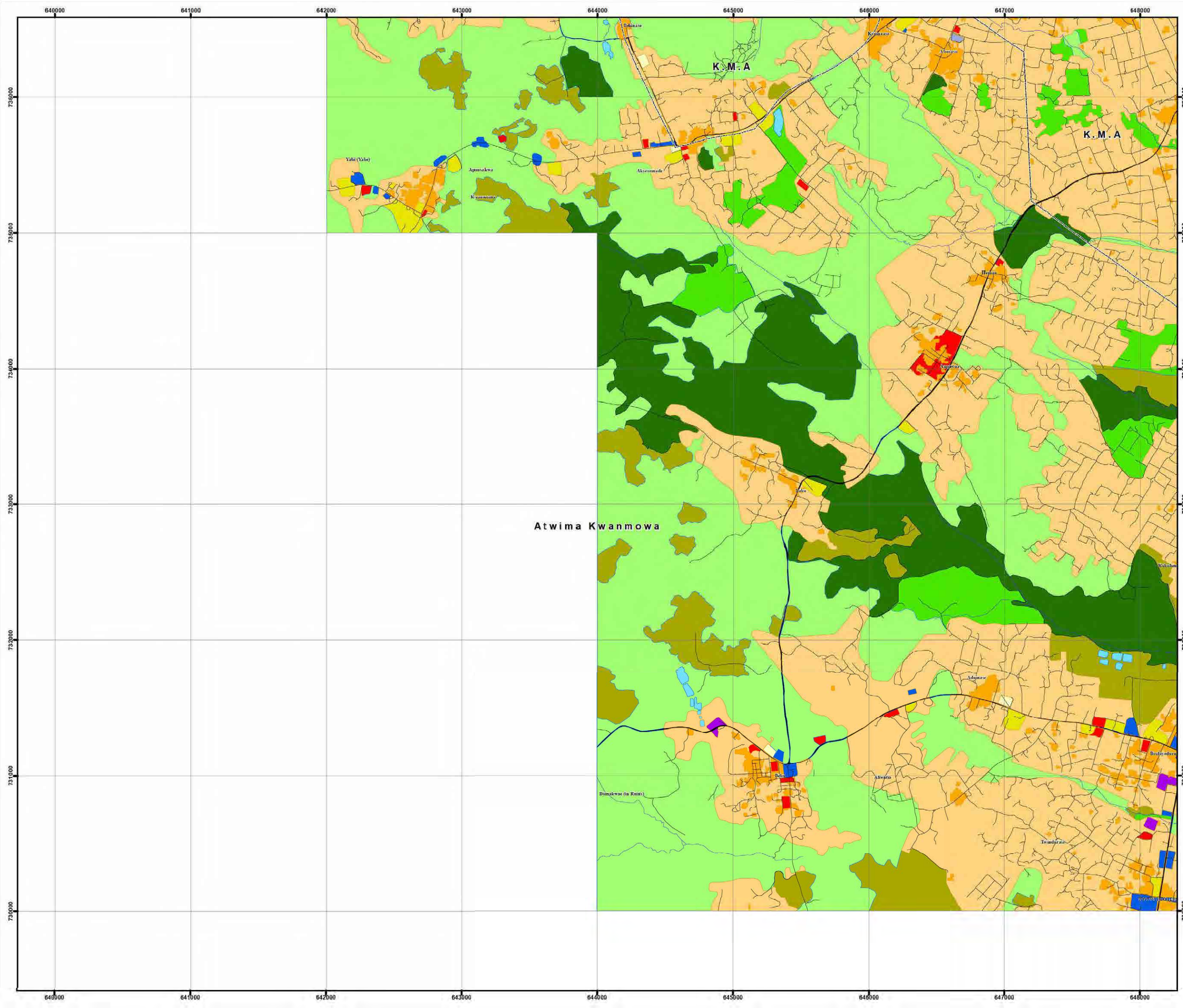
Map Projection:
- Projected Coordinate System: WGS 1984 UTM Zone 30N
- Projection: Transverse Mercator

Source:
1) Ejana Orthophotomaps, L.A.P. 2008/2009
2) Topographic Map, 1:50,000, SDG, 1972
3) Field Land Use Survey by JICA Study Team, 2012



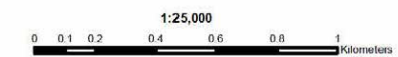
MINISTRY OF ENVIRONMENT, SCIENCE, TECHNOLOGY
AND INNOVATION (MESTI)
TOWN AND COUNTRY PLANNING DEPARTMENT (TCPD)
JAPAN INTERNATIONAL COOPERATION AGENCY (JICA)

ORIENTAL CONSULTANTS Co., Ltd.
CTI ENGINEERING INTERNATIONAL Co., Ltd.
ALMEC CORPORATION



LAND USE MAP
IN 2008
SCALE 1:10,000
648730

- LEGEND**
- ~ District Boundary
 - Transportation**
 - ~ 2300 Railway
 - ~ 2104 (Single Line) Road
 - Hydrology**
 - ~ 5201 (Single Line) River
 - ~ 5202 (Single Line) Seasonal River
 - Land Use**
 - 210100 Main Road
 - 210300 Other Road
 - 211000 Runway (Airport)
 - 300001 Commercial
 - 300003 Industrial
 - 300004 Educational
 - 300005 Institutional
 - 300021 High Density Residential
 - 300022 Low Density Residential
 - 300052 Utilities
 - 400100 Cemetery (more than 100m x 100m)
 - 400200 Market (more than 40m)
 - 400300 Park
 - 400400 Open Space/Sports Facility
 - 400500 Other Land Use
 - 510100 Wide River (more than 20m)
 - 510500 Lake/Pond (more than 20m x 20m)
 - 510600 Marsh, Swamp (more than 100m x 100m)
 - 633000 Forest/Grove/Woodland (more than 100m x 100m)
 - 633100 Bush (more than 100m x 100m)
 - 633200 Grassland (more than 100m x 100m)
 - 633300 Cultivated Field (more than 100m x 100m)



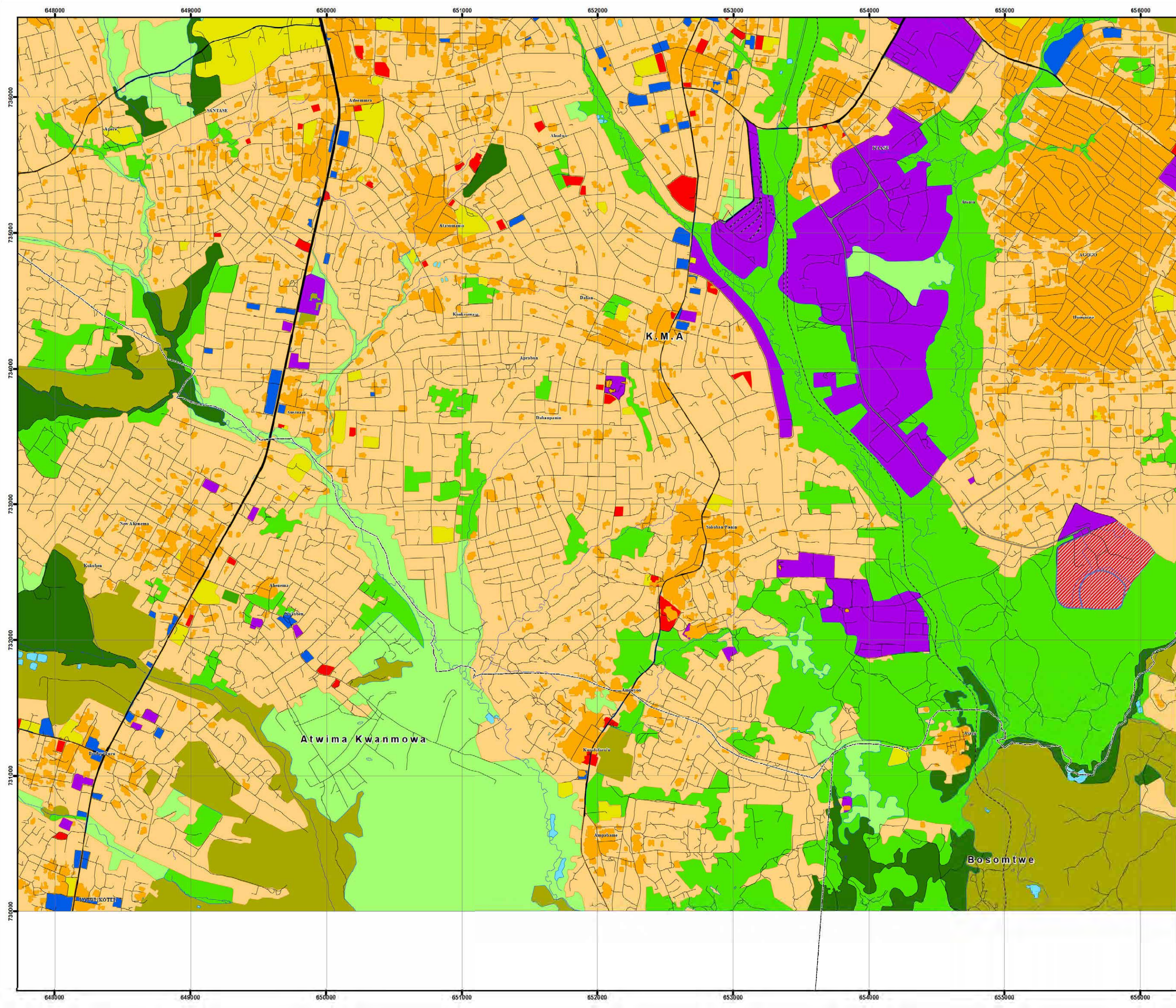
Map Projection:
 - Projected Coordinate System: WGS 1984 UTM Zone 30N
 - Projection: Transverse Mercator

Source:
 1) Ejura Orthophotomaps, L.A.P. 2008/2009
 2) Topographic Map, 1:50,000, SDG, 1972
 3) Field Land Use Survey by JICA Study Team, 2012



MINISTRY OF ENVIRONMENT, SCIENCE, TECHNOLOGY
AND INNOVATION (MESTI)
TOWN AND COUNTRY PLANNING DEPARTMENT (TCPD)
JAPAN INTERNATIONAL COOPERATION AGENCY (JICA)

ORIENTAL CONSULTANTS Co., Ltd.
CTI ENGINEERING INTERNATIONAL Co., Ltd.
ALMEC CORPORATION



18-14

**LAND USE MAP
IN 2008
SCALE 1:10,000
656730**

- LEGEND**
- ~ District Boundary
 - Transportation**
 - ~ 2300 Railway
 - ~ 2104 (Single Line) Road
 - Hydrology**
 - ~ 5201 (Single Line) River
 - ~ 5202 (Single Line) Seasonal River
 - Land Use**
 - 210100 Main Road
 - 210300 Other Road
 - 211000 Runway (Airport)
 - 300001 Commercial
 - 300003 Industrial
 - 300004 Educational
 - 300005 Institutional
 - 300021 High Density Residential
 - 300022 Low Density Residential
 - 300052 Utilities
 - 400100 Cemetery (more than 100m x 100m)
 - 400200 Market (more than 40m)
 - 400300 Park
 - 400400 Open Space/Sports Facility
 - 400500 Other Land Use
 - 510100 Wide River (more than 20m)
 - 510500 Lake/Pond (more than 20m x 20m)
 - 510600 Marsh, Swamp (more than 100m x 100m)
 - 633000 Forest/Grove/Woodland (more than 100m x 100m)
 - 633100 Bush (more than 100m x 100m)
 - 633200 Grassland (more than 100m x 100m)
 - 633300 Cultivated Field (more than 100m x 100m)



Map Projection:
- Projected Coordinate System: WGS 1984 UTM Zone 30N
- Projection: Transverse Mercator

Source:
1) Ejisu Orthophotomaps, L.A.P. 2008/2009
2) Topographic Map, 1:50,000, SDG, 1972
3) Field Land Use Survey by JICA Study Team, 2012



MINISTRY OF ENVIRONMENT, SCIENCE, TECHNOLOGY
AND INNOVATION (MESTI)
TOWN AND COUNTRY PLANNING DEPARTMENT (TCPD)
JAPAN INTERNATIONAL COOPERATION AGENCY (JICA)

ORIENTAL CONSULTANTS Co., Ltd.
CTI ENGINEERING INTERNATIONAL Co., Ltd.
ALMCE CORPORATION

