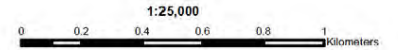


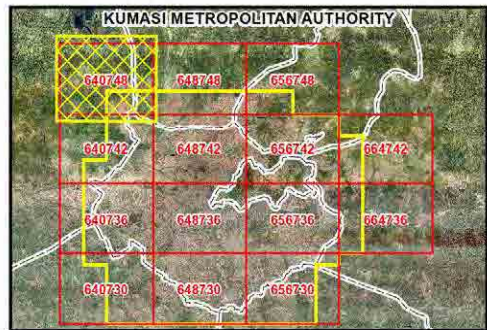
TOPOGRAPHIC MAP  
SCALE 1:10,000  
640748

- LEGEND**
- Administrative Boundary**
    - District Boundary
  - Building**
    - 3001 Permanent Building (More than 40m)
    - 3002 Building (More than 40m)
    - 3005 Building (Less than 39m)
    - 3524 School
    - 3523 Church
    - 3532 Hospital
    - 3539 Market
    - 3540 Mosque
  - Railway**
    - 2300 Railway
  - Road**
    - 2101 Main Road
    - 2103 Other Road
    - 2110 Runway
    - 2104 (Single Line) Road
    - 2105 Footpath
  - Hydrology**
    - 5101 Wide River
    - 5102 Wide Seasonal River
    - 5103 Wide Ditch
    - 5104 Wide Canal
    - 5105 Lake/Pond
    - 5106 Marsh, Swamp
    - 5201 (Single Line) River
    - 5202 (Single Line) Seasonal River
    - 5203 (Single Line) Ditch
    - 5204 (Single Line) Canal
  - Cartography**
    - 6141 Wall
    - 6142 Fence
  - Contour**
    - 7101 Index Contour, 50m Interval
    - 7102 Intermediate Contour, 10m Interval
  - Conservation**
    - Forest Reserve
  - Settlement**
    - 3000 Settlement



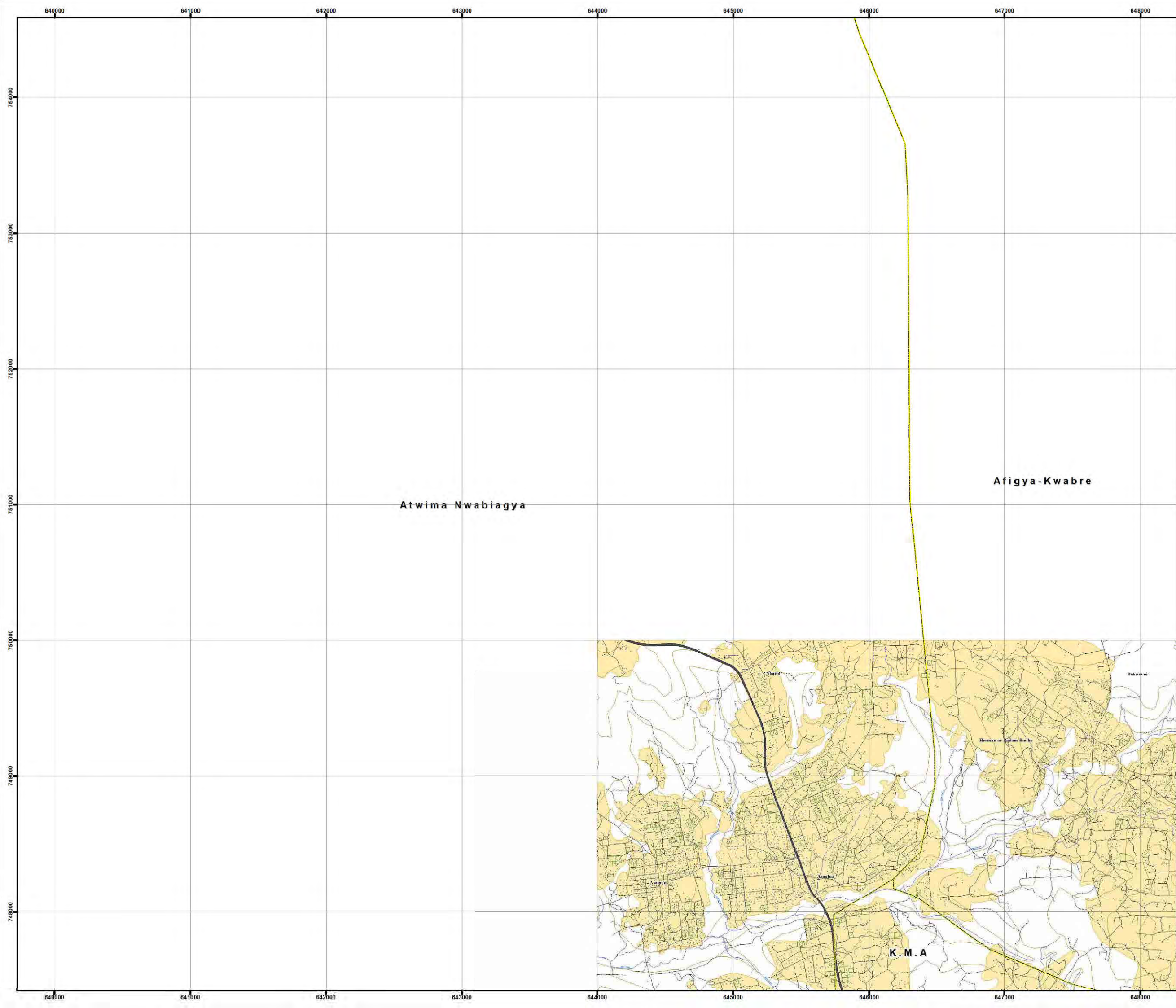
Map Projection:  
- Projected Coordinate System: WGS 1984 UTM Zone 30N  
- Projection: Transverse Mercator

Source:  
1) Ejaz Orthophotomaps, L.A.P. 2008/2009  
2) Topographic Map, 1:50,000, SDG, 1972  
3) ASTER GDEM Version 2, METI and NASA



MINISTRY OF ENVIRONMENT, SCIENCE, TECHNOLOGY  
AND INNOVATION (MESTI)  
TOWN AND COUNTRY PLANNING DEPARTMENT (TCPD)  
JAPAN INTERNATIONAL COOPERATION AGENCY (JICA)

ORIENTAL CONSULTANTS Co., Ltd.  
CTI ENGINEERING INTERNATIONAL Co., Ltd.  
ALMCE CORPORATION





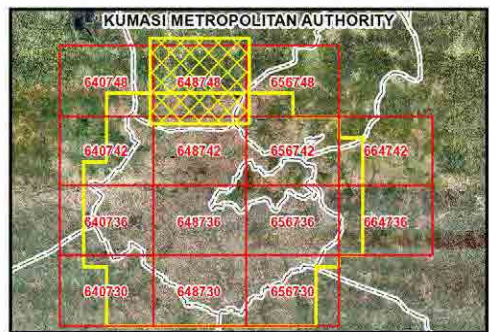
TOPOGRAPHIC MAP  
SCALE 1:10,000  
648748

- LEGEND**
- Administrative Boundary**
    - District Boundary
  - Building**
    - 3001 Permanent Building (More than 40m)
    - 3002 Building (More than 40m)
    - 3005 Building (Less than 39m)
    - 3524 School
    - 3523 Church
    - 3532 Hospital
    - 3539 Market
    - 3540 Mosque
  - Railway**
    - 2300 Railway
  - Road**
    - 2101 Main Road
    - 2103 Other Road
    - 2110 Runway
    - 2104 (Single Line) Road
    - 2105 Footpath
  - Hydrology**
    - 5101 Wide River
    - 5102 Wide Seasonal River
    - 5103 Wide Ditch
    - 5104 Wide Canal
    - 5105 Lake/Pond
    - 5106 Marsh, Swamp
    - 5201 (Single Line) River
    - 5202 (Single Line) Seasonal River
    - 5203 (Single Line) Ditch
    - 5204 (Single Line) Canal
  - Cartography**
    - 6141 Wall
    - 6142 Fence
  - Contour**
    - 7101 Index Contour, 50m Interval
    - 7102 Intermediate Contour, 10m Interval
  - Conservation**
    - Forest Reserve
  - Settlement**
    - 3000 Settlement



Map Projection:  
- Projected Coordinate System: WGS 1984 UTM Zone 30N  
- Projection: Transverse Mercator

Source:  
1) Ejana Orthophotomaps, L.A.T. 2008/2009  
2) Topographic Map, 1:50,000, SDG, 1972  
3) ASTER GDEM Version 2, METI and NASA

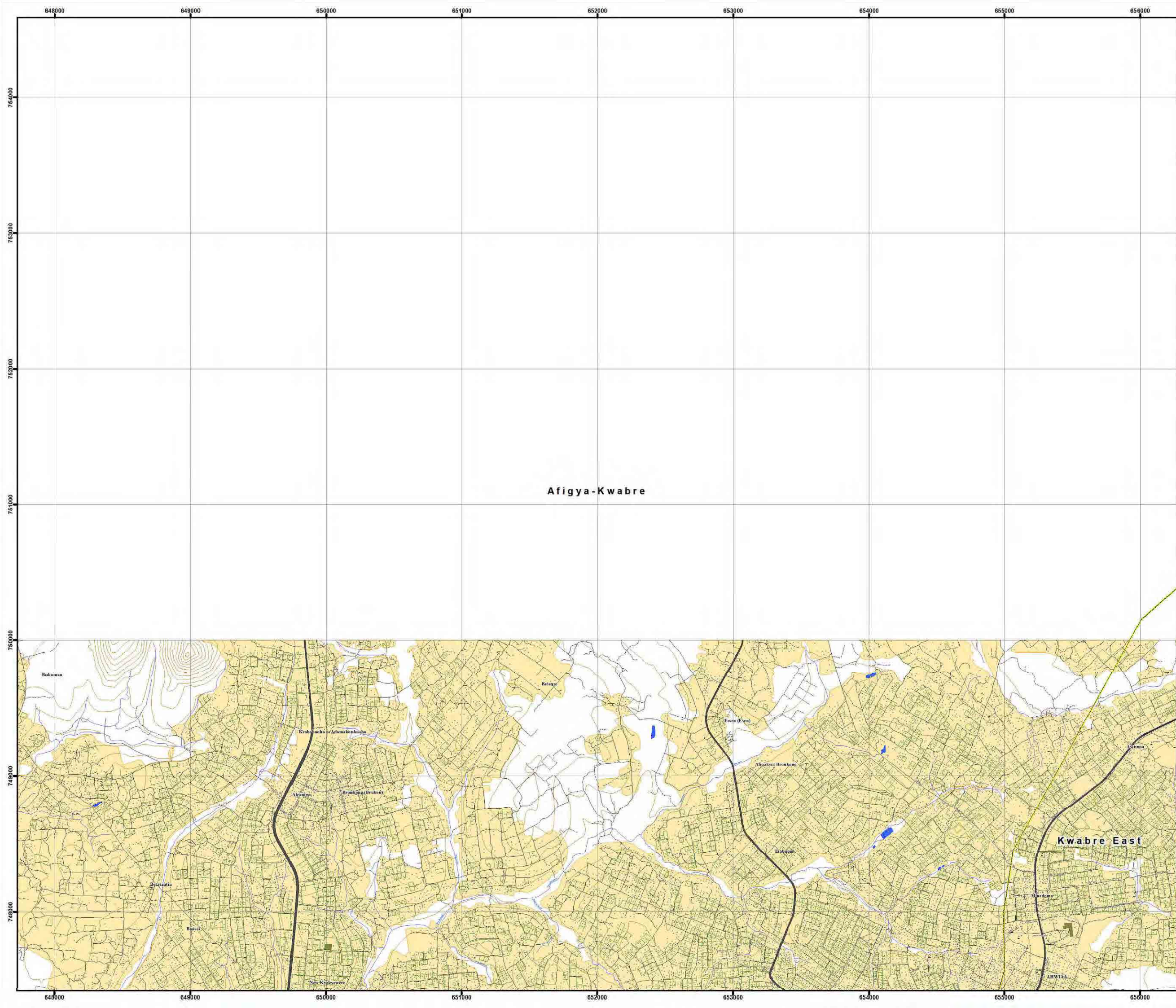


MINISTRY OF ENVIRONMENT, SCIENCE, TECHNOLOGY  
AND INNOVATION (MESTI)  
TOWN AND COUNTRY PLANNING DEPARTMENT (TCPD)  
JAPAN INTERNATIONAL COOPERATION AGENCY (JICA)

ORIENTAL CONSULTANTS Co., Ltd.  
CTI ENGINEERING INTERNATIONAL Co., Ltd.  
ALMCE CORPORATION

Afigya-Kwabre

Kwabre East





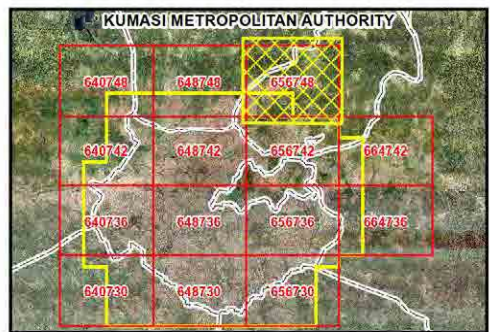
TOPOGRAPHIC MAP  
SCALE 1:10,000  
656748

- LEGEND**
- Administrative Boundary**
    - District Boundary
  - Building**
    - 3001 Permanent Building (More than 40m)
    - 3002 Building (More than 40m)
    - 3005 Building (Less than 40m)
    - 3524 School
    - 3523 Church
    - 3532 Hospital
    - 3539 Market
    - 3540 Mosque
  - Railway**
    - 2300 Railway
  - Road**
    - 2101 Main Road
    - 2103 Other Road
    - 2110 Runway
    - 2104 (Single Line) Road
    - 2105 Footpath
  - Hydrology**
    - 5101 Wide River
    - 5102 Wide Seasonal River
    - 5103 Wide Ditch
    - 5104 Wide Canal
    - 5105 Lake/Pond
    - 5106 Marsh, Swamp
    - 5201 (Single Line) River
    - 5202 (Single Line) Seasonal River
    - 5203 (Single Line) Ditch
    - 5204 (Single Line) Canal
  - Cartography**
    - 6141 Wall
    - 6142 Fence
  - Contour**
    - 7101 Index Contour, 50m Interval
    - 7102 Intermediate Contour, 10m Interval
  - Conservation**
    - Forest Reserve
  - Settlement**
    - 3000 Settlement



Map Projection:  
- Projected Coordinate System: WGS 1984 UTM Zone 30N  
- Projection: Transverse Mercator

Source:  
1) Ejana Orthophotomaps, L.A.P. 2008/2009  
2) Topographic Map, 1:50,000, SDG, 1972  
3) ASTER GDEM Version 2, METI and NASA

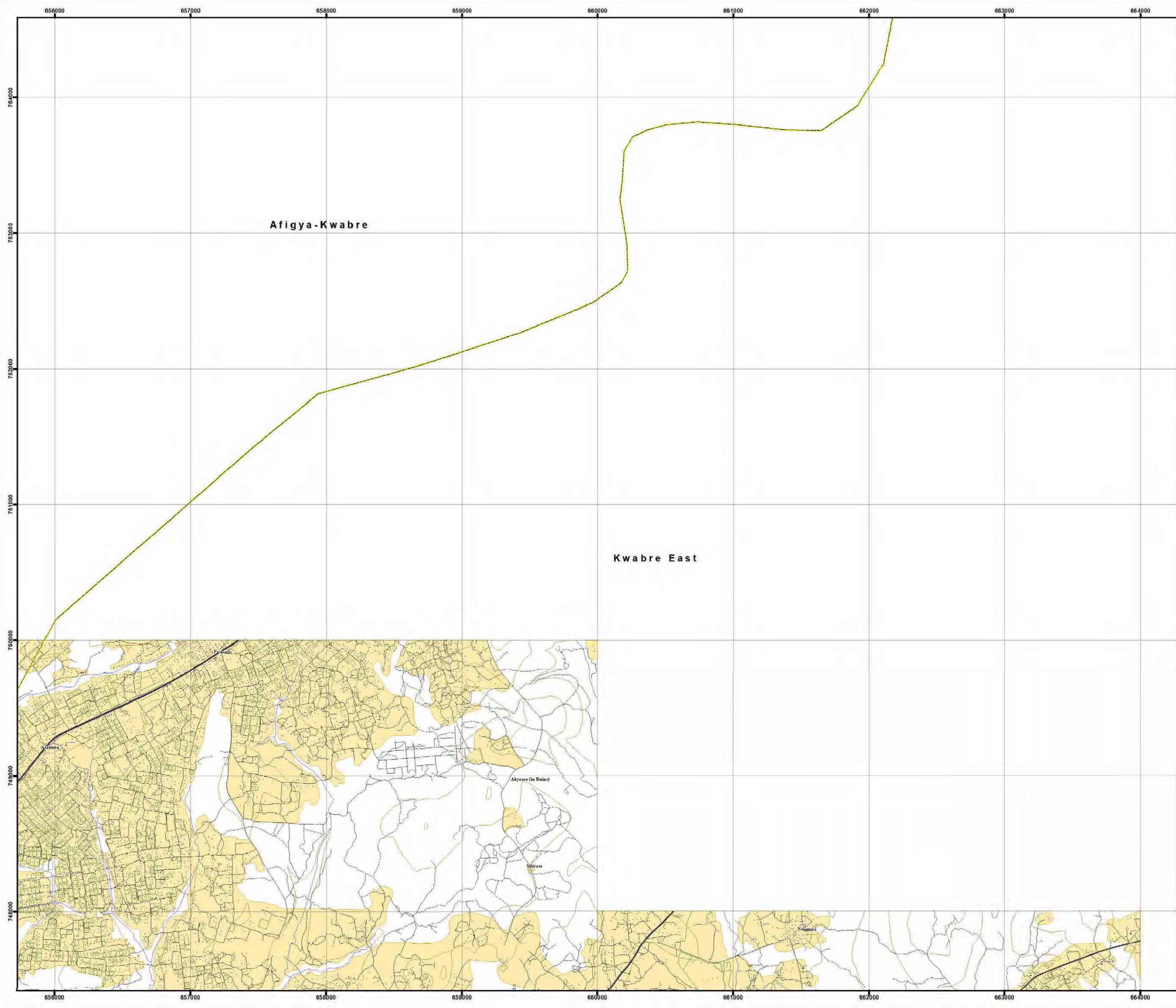


MINISTRY OF ENVIRONMENT, SCIENCE, TECHNOLOGY  
AND INNOVATION (MESTI)  
TOWN AND COUNTRY PLANNING DEPARTMENT (TCPD)  
JAPAN INTERNATIONAL COOPERATION AGENCY (JICA)

ORIENTAL CONSULTANTS Co., Ltd.  
CTI ENGINEERING INTERNATIONAL Co., Ltd.  
ALMCE CORPORATION

Afigya-Kwabre

Kwabre East

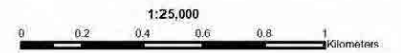




TOPOGRAPHIC MAP  
SCALE 1:10,000  
640742

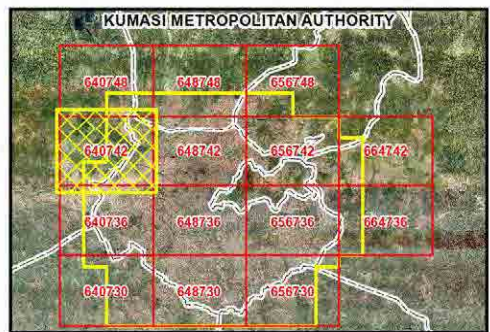
LEGEND

- Administrative Boundary**
  - District Boundary
- Building**
  - 3001 Permanent Building (More than 40m)
  - 3002 Building (More than 40m)
  - 3005 Building (Less than 39m)
  - 3524 School
  - 3523 Church
  - 3532 Hospital
  - 3539 Market
  - 3540 Mosque
- Railway**
  - 2300 Railway
- Road**
  - 2101 Main Road
  - 2103 Other Road
  - 2110 Runway
  - 2104 (Single Line) Road
  - 2105 Footpath
- Hydrology**
  - 5101 Wide River
  - 5102 Wide Seasonal River
  - 5103 Wide Ditch
  - 5104 Wide Canal
  - 5105 Lake/Pond
  - 5106 Marsh, Swamp
  - 5201 (Single Line) River
  - 5202 (Single Line) Seasonal River
  - 5203 (Single Line) Ditch
  - 5204 (Single Line) Canal
- Cartography**
  - 6141 Wall
  - 6142 Fence
- Contour**
  - 7101 Index Contour, 50m Interval
  - 7102 Intermediate Contour, 10m Interval
- Conservation**
  - Forest Reserve
- Settlement**
  - 3000 Settlement



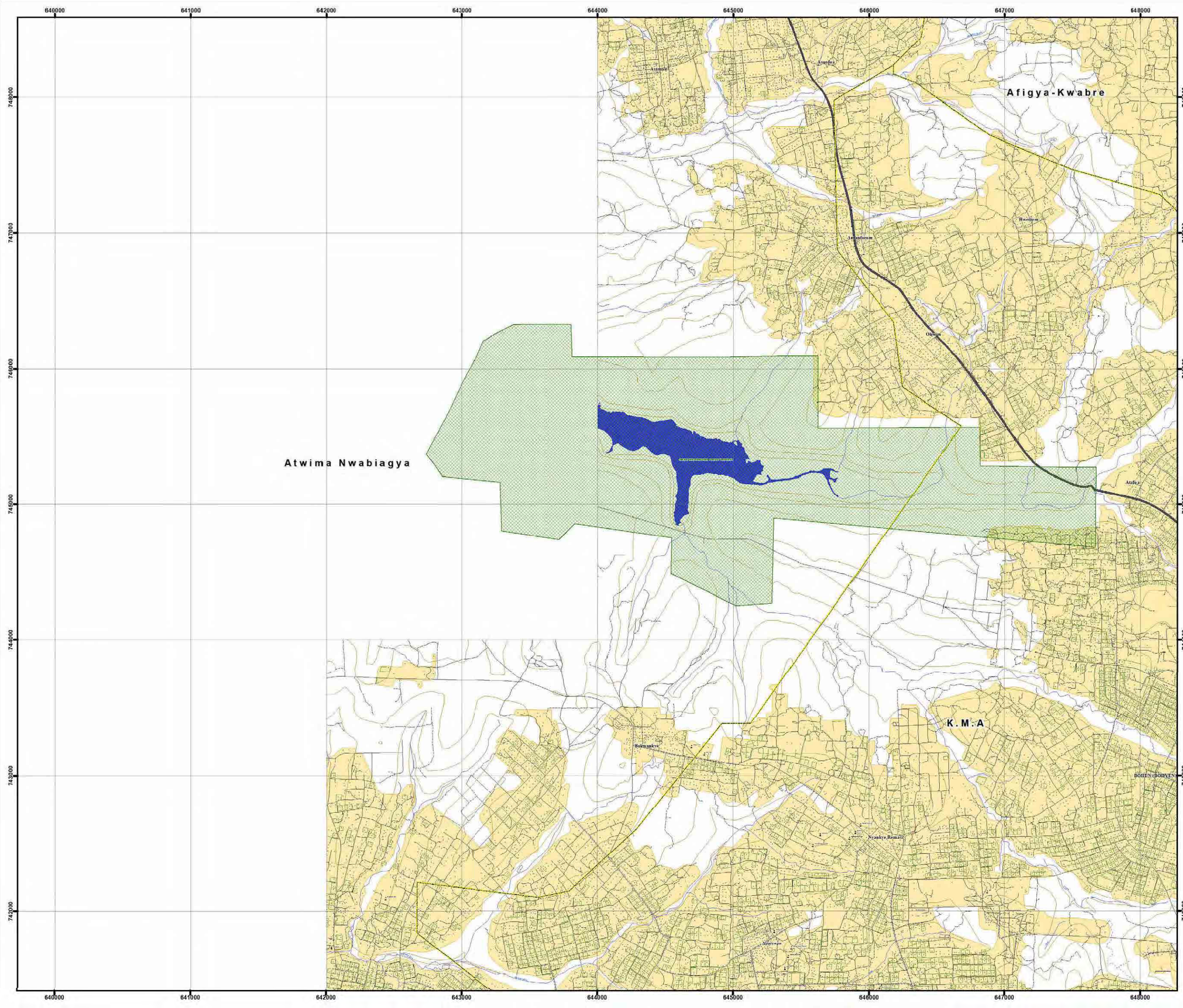
Map Projection:  
- Projected Coordinate System: WGS 1984 UTM Zone 30N  
- Projection: Transverse Mercator

Source:  
1) Ejura Orthophotomaps, L.A.P, 2008/2009  
2) Topographic Map, 1:50,000, SDG, 1972  
3) ASTER GDEM Version 2, METI and NASA



MINISTRY OF ENVIRONMENT, SCIENCE, TECHNOLOGY  
AND INNOVATION (MESTI)  
TOWN AND COUNTRY PLANNING DEPARTMENT (TCPD)  
JAPAN INTERNATIONAL COOPERATION AGENCY (JICA)

ORIENTAL CONSULTANTS Co., Ltd.  
CTI ENGINEERING INTERNATIONAL Co., Ltd.  
ALMCE CORPORATION





**TOPOGRAPHIC MAP**  
**SCALE 1:10,000**  
**648742**

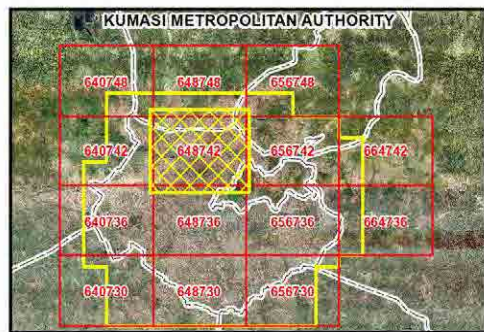
**LEGEND**

- Administrative Boundary**
- District Boundary
- Building**
- 3001 Permanent Building (More than 40m)
- 3002 Building (More than 40m)
- 3005 Building (Less than 39m)
- 3524 School
- 3523 Church
- 3532 Hospital
- 3539 Market
- 3540 Mosque
- Railway**
- 2300 Railway
- Road**
- 2101 Main Road
- 2103 Other Road
- 2110 Runway
- 2104 (Single Line) Road
- 2105 Footpath
- Hydrology**
- 5101 Wide River
- 5102 Wide Seasonal River
- 5103 Wide Ditch
- 5104 Wide Canal
- 5105 Lake/Pond
- 5106 Marsh, Swamp
- 5201 (Single Line) River
- 5202 (Single Line) Seasonal River
- 5203 (Single Line) Ditch
- 5204 (Single Line) Canal
- Cartography**
- 6141 Wall
- 6142 Fence
- Contour**
- 7101 Index Contour, 50m Interval
- 7102 Intermediate Contour, 10m Interval
- Conservation**
- Forest Reserve
- Settlement**
- 3000 Settlement



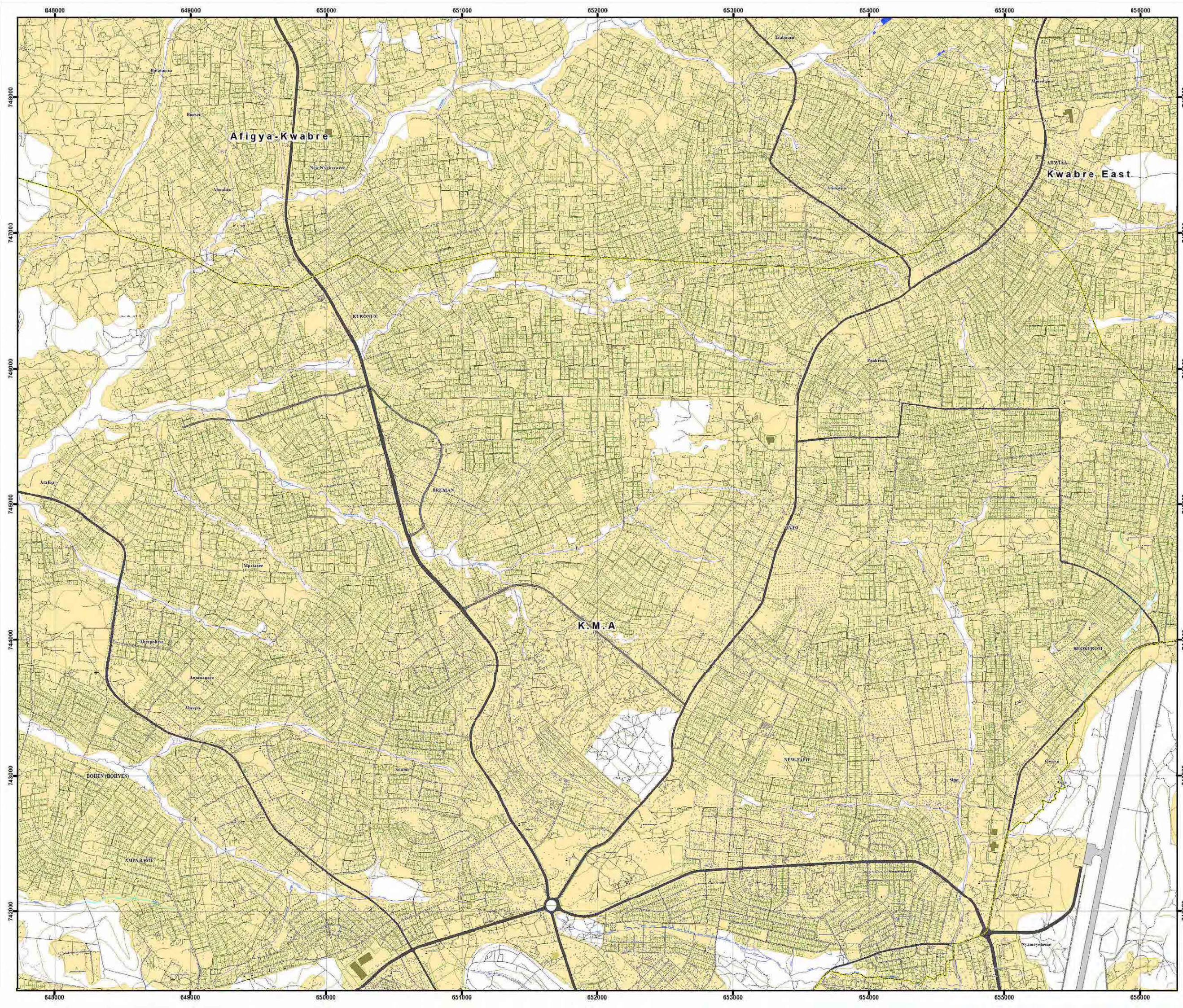
Map Projection:  
- Projected Coordinate System: WGS 1984 UTM Zone 30N  
- Projection: Transverse Mercator

Source:  
1) Ejana Orthophotomaps, L.A.P. 2008/2009  
2) Topographic Map, 1:50,000, SDG, 1972  
3) ASTER GDEM Version 2, METI and NASA



MINISTRY OF ENVIRONMENT, SCIENCE, TECHNOLOGY  
AND INNOVATION (MESTI)  
TOWN AND COUNTRY PLANNING DEPARTMENT (TCPD)  
JAPAN INTERNATIONAL COOPERATION AGENCY (JICA)

ORIENTAL CONSULTANTS Co., Ltd.  
CTI ENGINEERING INTERNATIONAL Co., Ltd.  
ALMCE CORPORATION





TOPOGRAPHIC MAP  
SCALE 1:10,000  
656742

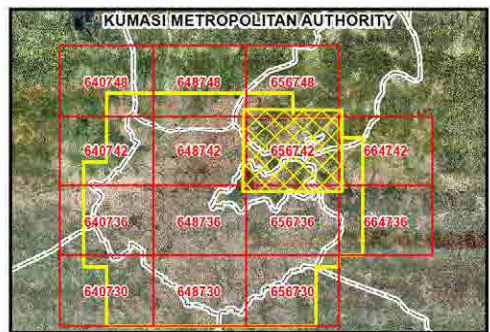
LEGEND

- Administrative Boundary**
  - District Boundary
- Building**
  - 3001 Permanent Building (More than 40m)
  - 3002 Building (More than 40m)
  - 3005 Building (Less than 39m)
  - 3524 School
  - 3523 Church
  - 3532 Hospital
  - 3539 Market
  - 3540 Mosque
- Railway**
  - 2300 Railway
- Road**
  - 2101 Main Road
  - 2103 Other Road
  - 2110 Runway
  - 2104 (Single Line) Road
  - 2105 Footpath
- Hydrology**
  - 5101 Wide River
  - 5102 Wide Seasonal River
  - 5103 Wide Ditch
  - 5104 Wide Canal
  - 5105 Lake/Pond
  - 5106 Marsh, Swamp
  - 5201 (Single Line) River
  - 5202 (Single Line) Seasonal River
  - 5203 (Single Line) Ditch
  - 5204 (Single Line) Canal
- Cartography**
  - 6141 Wall
  - 6142 Fence
- Contour**
  - 7101 Index Contour, 50m Interval
  - 7102 Intermediate Contour, 10m Interval
- Conservation**
  - Forest Reserve
- Settlement**
  - 3000 Settlement



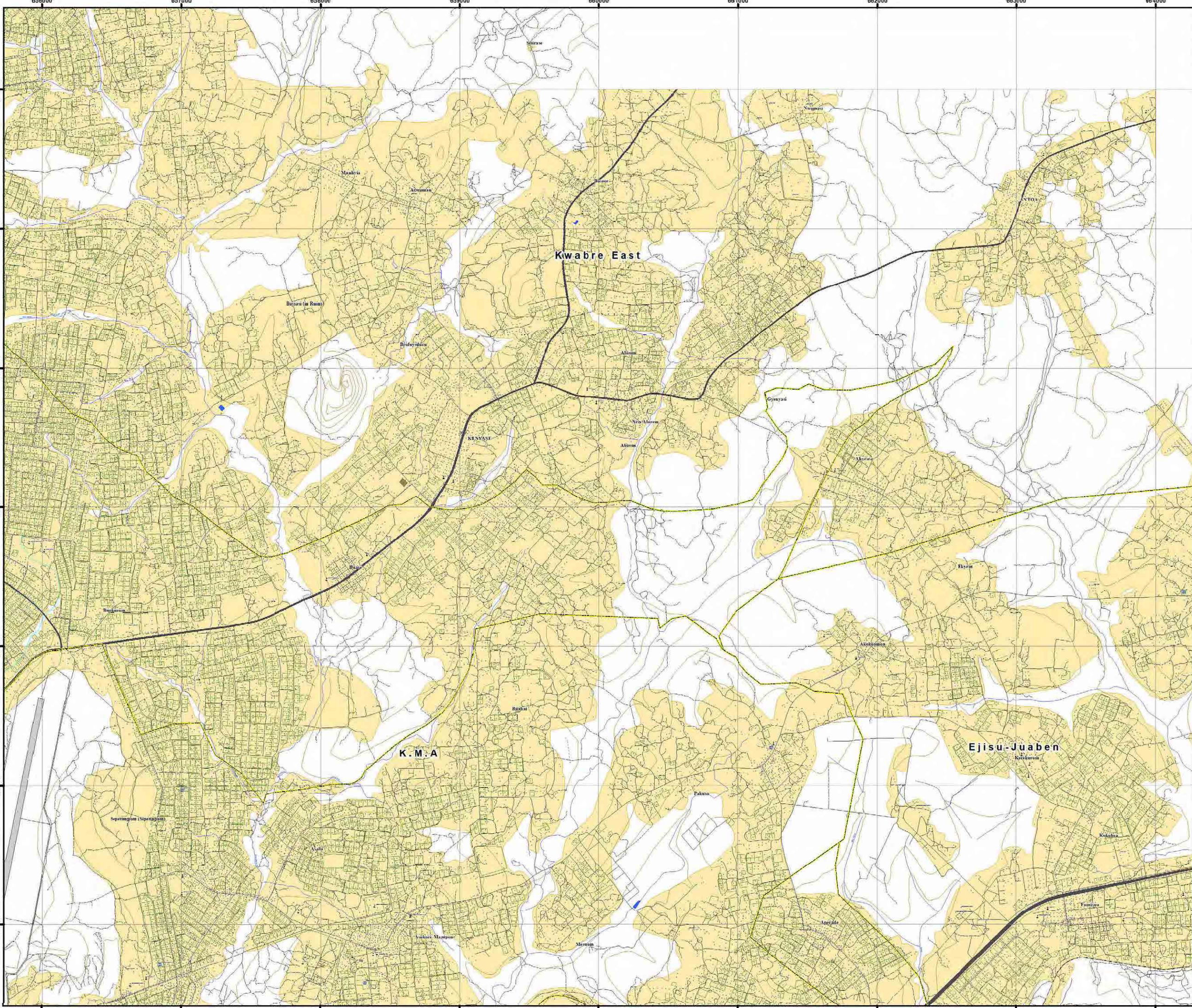
Map Projection:  
- Projected Coordinate System: WGS 1984 UTM Zone 30N  
- Projection: Transverse Mercator

Source:  
1) Ejisu Orthophotomaps, L.A.P. 2008/2009  
2) Topographic Map, 1:50,000, SDG, 1972  
3) ASTER GDEM Version 2, METI and NASA



MINISTRY OF ENVIRONMENT, SCIENCE, TECHNOLOGY  
AND INNOVATION (MESTI)  
TOWN AND COUNTRY PLANNING DEPARTMENT (TCPD)  
JAPAN INTERNATIONAL COOPERATION AGENCY (JICA)

ORIENTAL CONSULTANTS Co., Ltd.  
CTI ENGINEERING INTERNATIONAL Co., Ltd.  
ALMCE CORPORATION





16-7

**TOPOGRAPHIC MAP**  
**SCALE 1:10,000**  
**664742**

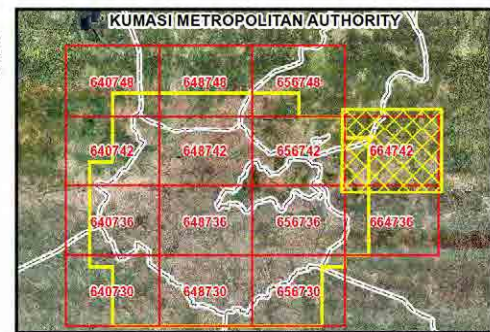
**LEGEND**

- Administrative Boundary**
- District Boundary
- Building**
- 3001 Permanent Building (More than 40m)
- 3002 Building (More than 40m)
- 3005 Building (Less than 39m)
- 3524 School
- 3523 Church
- 3532 Hospital
- 3539 Market
- 3540 Mosque
- Railway**
- 2300 Railway
- Road**
- 2101 Main Road
- 2103 Other Road
- 2110 Runway
- 2104 (Single Line) Road
- 2105 Footpath
- Hydrology**
- 5101 Wide River
- 5102 Wide Seasonal River
- 5103 Wide Ditch
- 5104 Wide Canal
- 5105 Lake/Pond
- 5106 Marsh, Swamp
- 5201 (Single Line) River
- 5202 (Single Line) Seasonal River
- 5203 (Single Line) Ditch
- 5204 (Single Line) Canal
- Cartography**
- 6141 Wall
- 6142 Fence
- Contour**
- 7101 Index Contour, 50m Interval
- 7102 Intermediate Contour, 10m Interval
- Conservation**
- Forest Reserve
- Settlement**
- 3000 Settlement



Map Projection:  
- Projected Coordinate System: WGS 1984 UTM Zone 30N  
- Projection: Transverse Mercator

Source:  
1) Ejisu Orthophotomaps, L.A.P. 2008/2009  
2) Topographic Map, 1:50,000, SDG, 1972  
3) ASTER GDEM Version 2, METI and NASA

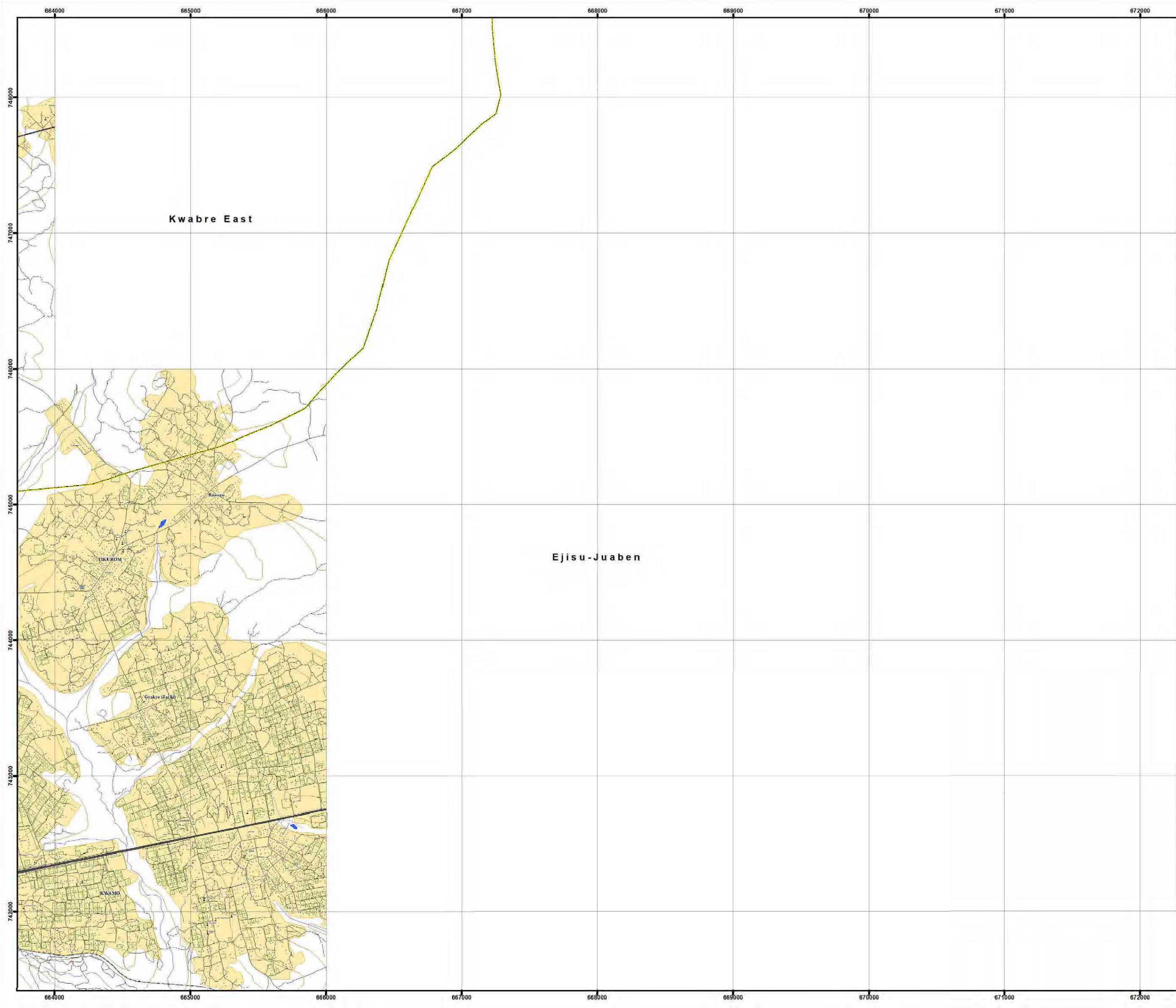


MINISTRY OF ENVIRONMENT, SCIENCE, TECHNOLOGY  
AND INNOVATION (MESTI)  
TOWN AND COUNTRY PLANNING DEPARTMENT (TCPD)  
JAPAN INTERNATIONAL COOPERATION AGENCY (JICA)

ORIENTAL CONSULTANTS Co., Ltd.  
CTI ENGINEERING INTERNATIONAL Co., Ltd.  
ALMCE CORPORATION

Kwabre East

Ejisu-Juaben

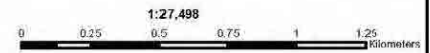




**TOPOGRAPHIC MAP**  
**SCALE 1:10,000**  
**640736**

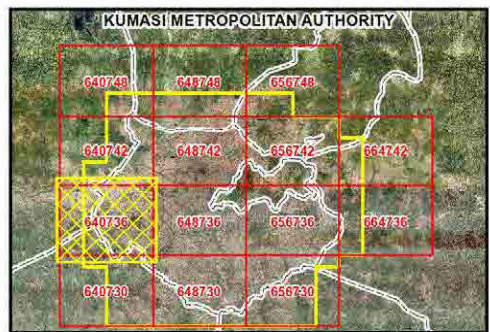
**LEGEND**

- Administrative Boundary**
- District Boundary
- Building**
- 3001 Permanent Building (More than 40m)
- 3002 Building (More than 40m)
- 3005 Building (Less than 39m)
- 3524 School
- 3523 Church
- 3532 Hospital
- 3539 Market
- 3540 Mosque
- Railway**
- 2300 Railway
- Road**
- 2101 Main Road
- 2103 Other Road
- 2110 Runway
- 2104 (Single Line) Road
- 2105 Footpath
- Hydrology**
- 5101 Wide River
- 5102 Wide Seasonal River
- 5103 Wide Ditch
- 5104 Wide Canal
- 5105 Lake/Pond
- 5106 Marsh, Swamp
- 5201 (Single Line) River
- 5202 (Single Line) Seasonal River
- 5203 (Single Line) Ditch
- 5204 (Single Line) Canal
- Cartography**
- 6141 Wall
- 6142 Fence
- Contour**
- 7101 Index Contour, 50m Interval
- 7102 Intermediate Contour, 10m Interval
- Conservation**
- Forest Reserve
- Settlement**
- 3000 Settlement



Map Projection:  
- Projected Coordinate System: WGS 1984 UTM Zone 30N  
- Projection: Transverse Mercator

Source:  
1) Ejiofor Orthophotomaps, L.A.P. 2008/2009  
2) Topographic Map, 1:50,000, SDG, 1972  
3) ASTER GDEM Version 2, METI and NASA



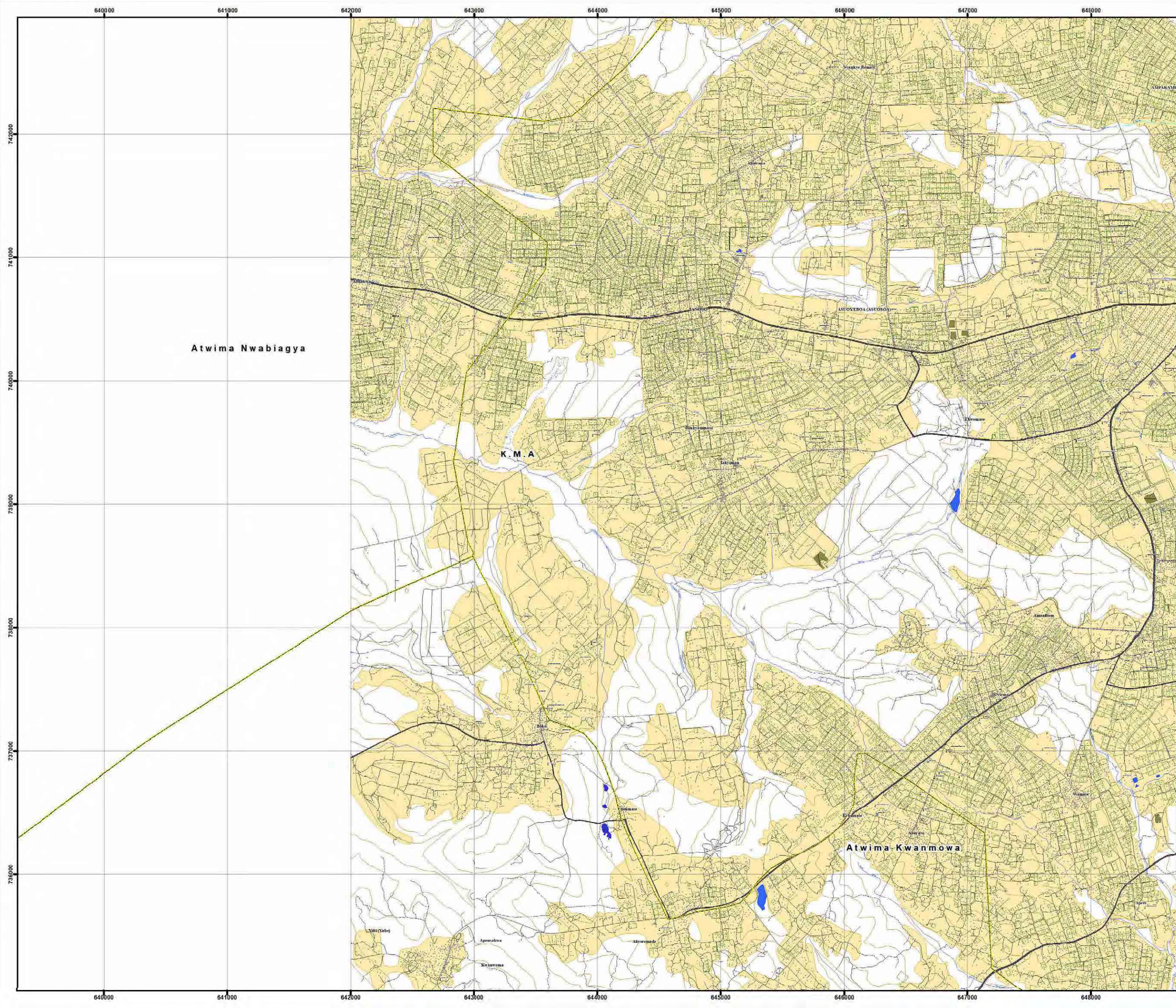
MINISTRY OF ENVIRONMENT, SCIENCE, TECHNOLOGY  
AND INNOVATION (MESTI)  
TOWN AND COUNTRY PLANNING DEPARTMENT (TCPD)  
JAPAN INTERNATIONAL COOPERATION AGENCY (JICA)

ORIENTAL CONSULTANTS Co., Ltd.  
CTI ENGINEERING INTERNATIONAL Co., Ltd.  
ALMEC CORPORATION

Atwima Nwabiagya

K.M.A

Atwima Kwanmowa





TOPOGRAPHIC MAP  
SCALE 1:10,000  
648736

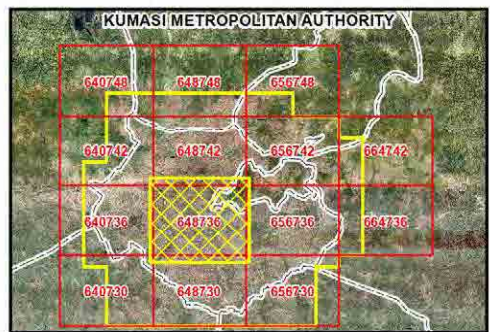
LEGEND

- Administrative Boundary**
  - District Boundary
- Building**
  - 3001 Permanent Building (More than 40m)
  - 3002 Building (More than 40m)
  - 3005 Building (Less than 39m)
  - 3524 School
  - 3523 Church
  - 3532 Hospital
  - 3539 Market
  - 3540 Mosque
- Railway**
  - 2300 Railway
- Road**
  - 2101 Main Road
  - 2103 Other Road
  - 2110 Runway
  - 2104 (Single Line) Road
  - 2105 Footpath
- Hydrology**
  - 5101 Wide River
  - 5102 Wide Seasonal River
  - 5103 Wide Ditch
  - 5104 Wide Canal
  - 5105 Lake/Pond
  - 5106 Marsh, Swamp
  - 5201 (Single Line) River
  - 5202 (Single Line) Seasonal River
  - 5203 (Single Line) Ditch
  - 5204 (Single Line) Canal
- Cartography**
  - 6141 Wall
  - 6142 Fence
- Contour**
  - 7101 Index Contour, 50m Interval
  - 7102 Intermediate Contour, 10m Interval
- Conservation**
  - Forest Reserve
- Settlement**
  - 3000 Settlement



Map Projection:  
- Projected Coordinate System: WGS 1984 UTM Zone 30N  
- Projection: Transverse Mercator

Source:  
1) Ejura Orthophotomaps, L.A.P, 2008/2009  
2) Topographic Map, 1:50,000, SDG, 1972  
3) ASTER GDEM Version 2, METI and NASA



MINISTRY OF ENVIRONMENT, SCIENCE, TECHNOLOGY  
AND INNOVATION (MESTI)  
TOWN AND COUNTRY PLANNING DEPARTMENT (TCPD)  
JAPAN INTERNATIONAL COOPERATION AGENCY (JICA)

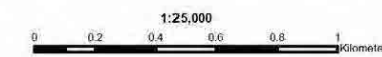
ORIENTAL CONSULTANTS Co., Ltd.  
CTI ENGINEERING INTERNATIONAL Co., Ltd.  
ALMCE CORPORATION



TOPOGRAPHIC MAP  
SCALE 1:10,000  
656736

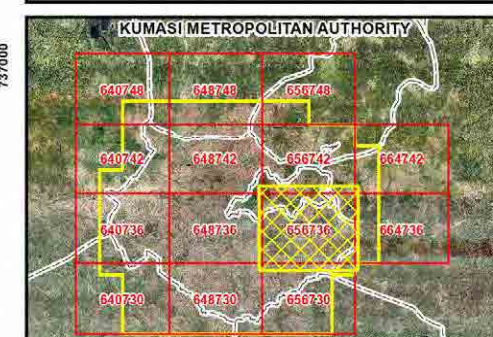
LEGEND

- Administrative Boundary**
  - District Boundary
- Building**
  - 3001 Permanent Building (More than 40m)
  - 3002 Building (More than 40m)
  - 3005 Building (Less than 39m)
  - 3524 School
  - 3523 Church
  - 3532 Hospital
  - 3539 Market
  - 3540 Mosque
- Railway**
  - 2300 Railway
- Road**
  - 2101 Main Road
  - 2103 Other Road
  - 2110 Runway
  - 2104 (Single Line) Road
  - 2105 Footpath
- Hydrology**
  - 5101 Wide River
  - 5102 Wide Seasonal River
  - 5103 Wide Ditch
  - 5104 Wide Canal
  - 5105 Lake/Pond
  - 5106 Marsh, Swamp
  - 5201 (Single Line) River
  - 5202 (Single Line) Seasonal River
  - 5203 (Single Line) Ditch
  - 5204 (Single Line) Canal
- Cartography**
  - 6141 Wall
  - 6142 Fence
- Contour**
  - 7101 Index Contour, 50m Interval
  - 7102 Intermediate Contour, 10m Interval
- Conservation**
  - Forest Reserve
- Settlement**
  - 3000 Settlement



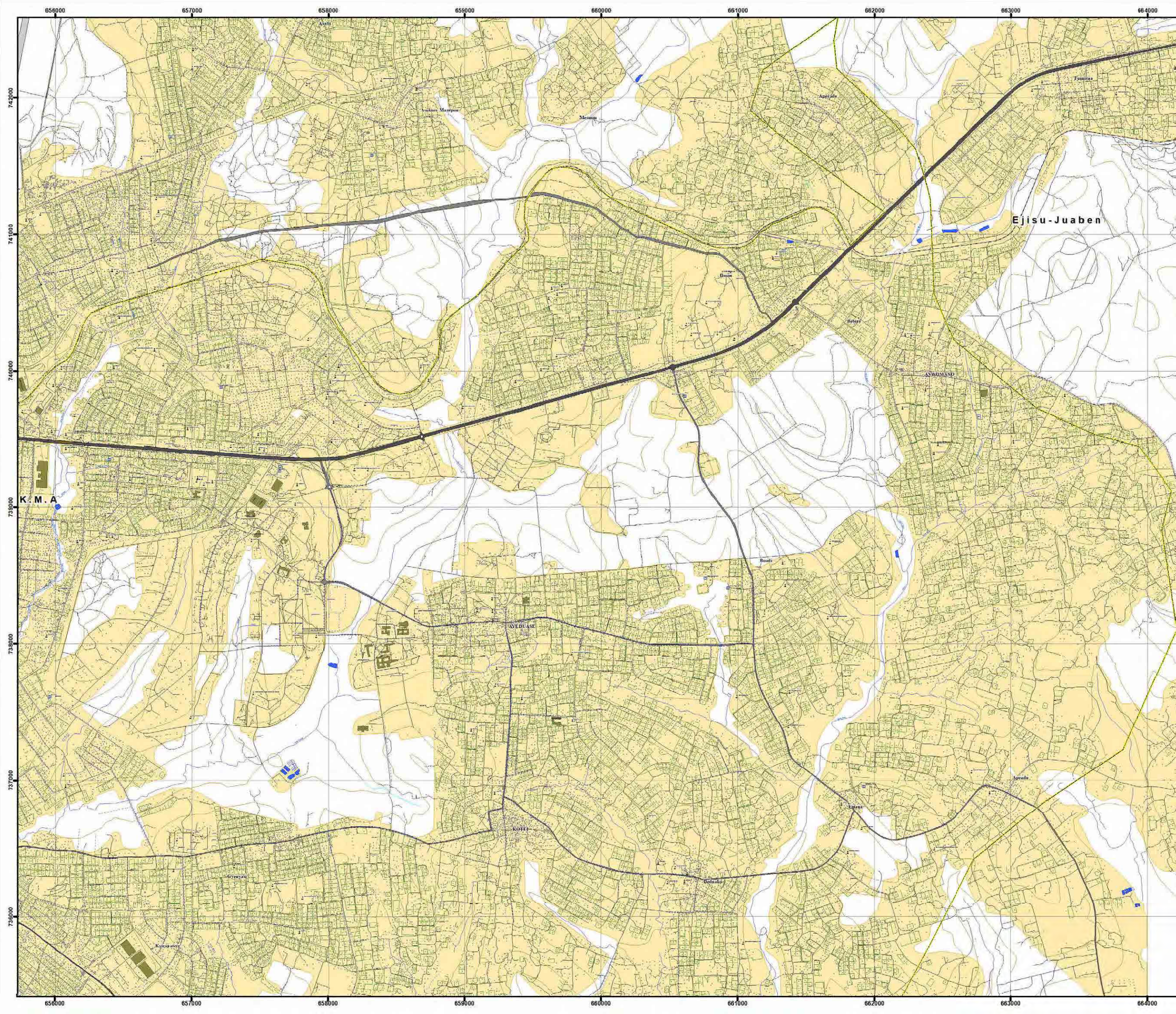
Map Projection:  
- Projected Coordinate System: WGS 1984 UTM Zone 30N  
- Projection: Transverse Mercator

Source:  
1) Ejisu Orthophotomaps, L.A.P, 2008/2009  
2) Topographic Map, 1:50,000, SDG, 1972  
3) ASTER GDEM Version 2, METI and NASA



MINISTRY OF ENVIRONMENT, SCIENCE, TECHNOLOGY  
AND INNOVATION (MESTI)  
TOWN AND COUNTRY PLANNING DEPARTMENT (TCPD)  
JAPAN INTERNATIONAL COOPERATION AGENCY (JICA)

ORIENTAL CONSULTANTS Co., Ltd.  
CTI ENGINEERING INTERNATIONAL Co., Ltd.  
ALMCE CORPORATION

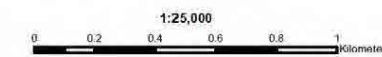




16-11

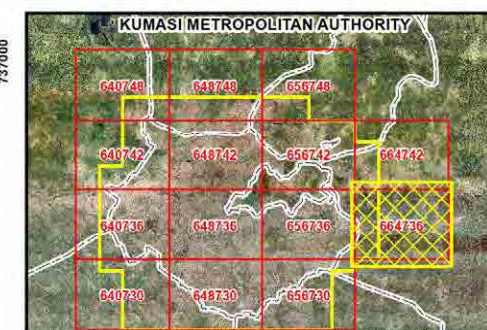
**TOPOGRAPHIC MAP**  
**SCALE 1:10,000**  
**664736**

- LEGEND**
- Administrative Boundary**
    - District Boundary
  - Building**
    - 3001 Permanent Building (More than 40m)
    - 3002 Building (More than 40m)
    - 3005 Building (Less than 39m)
    - 3524 School
    - 3523 Church
    - 3532 Hospital
    - 3539 Market
    - 3540 Mosque
  - Railway**
    - 2300 Railway
  - Road**
    - 2101 Main Road
    - 2103 Other Road
    - 2110 Runway
    - 2104 (Single Line) Road
    - 2105 Footpath
  - Hydrology**
    - 5101 Wide River
    - 5102 Wide Seasonal River
    - 5103 Wide Ditch
    - 5104 Wide Canal
    - 5105 Lake/Pond
    - 5106 Marsh, Swamp
    - 5201 (Single Line) River
    - 5202 (Single Line) Seasonal River
    - 5203 (Single Line) Ditch
    - 5204 (Single Line) Canal
  - Cartography**
    - 6141 Wall
    - 6142 Fence
  - Contour**
    - 7101 Index Contour, 50m Interval
    - 7102 Intermediate Contour, 10m Interval
  - Conservation**
    - Forest Reserve
  - Settlement**
    - 3000 Settlement



Map Projection:  
- Projected Coordinate System: WGS 1984 UTM Zone 30N  
- Projection: Transverse Mercator

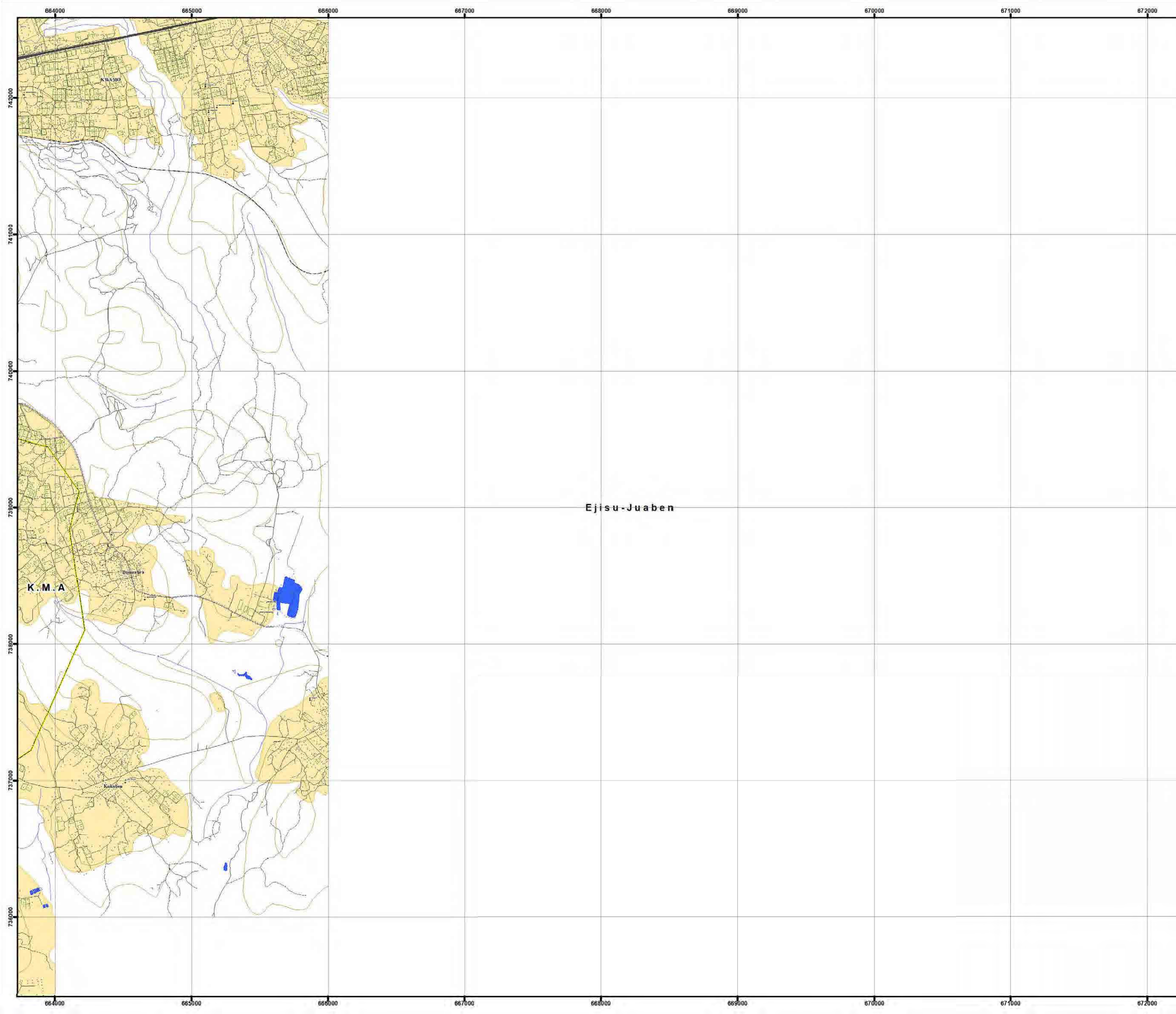
Source:  
1) Ejisu Orthophotomaps, L.A.P. 2008/2009  
2) Topographic Map, 1:50,000, SDG, 1972  
3) ASTER GDEM Version 2, METI and NASA



MINISTRY OF ENVIRONMENT, SCIENCE, TECHNOLOGY  
AND INNOVATION (MESTI)  
TOWN AND COUNTRY PLANNING DEPARTMENT (TCPD)  
JAPAN INTERNATIONAL COOPERATION AGENCY (JICA)

ORIENTAL CONSULTANTS Co., Ltd.  
CTI ENGINEERING INTERNATIONAL Co., Ltd.  
ALMCE CORPORATION

Ejisu-Juaben



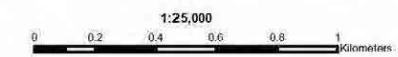


16-12

**TOPOGRAPHIC MAP**  
**SCALE 1:10,000**  
**640730**

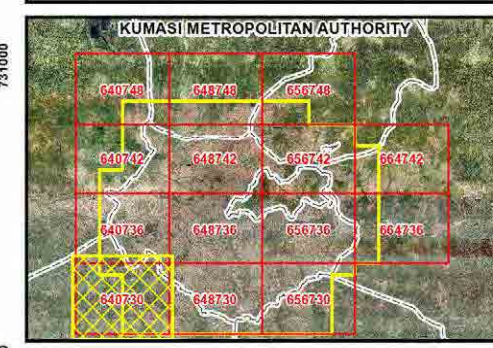
**LEGEND**

- Administrative Boundary**
- ▬ District Boundary
- Building**
- 3001 Permanent Building (More than 40m)
- 3002 Building (More than 40m)
- 3005 Building (Less than 39m)
- 3524 School
- 3523 Church
- 3532 Hospital
- 3539 Market
- 3540 Mosque
- Railway**
- ▬ 2300 Railway
- Road**
- ▬ 2101 Main Road
- ▬ 2103 Other Road
- ▬ 2110 Runway
- ▬ 2104 (Single Line) Road
- ▬ 2105 Footpath
- Hydrology**
- 5101 Wide River
- 5102 Wide Seasonal River
- 5103 Wide Ditch
- 5104 Wide Canal
- 5105 Lake/Pond
- 5106 Marsh, Swamp
- ▬ 5201 (Single Line) River
- ▬ 5202 (Single Line) Seasonal River
- ▬ 5203 (Single Line) Ditch
- ▬ 5204 (Single Line) Canal
- Cartography**
- ▬ 6141 Wall
- ▬ 6142 Fence
- Contour**
- ▬ 7101 Index Contour, 50m Interval
- ▬ 7102 Intermediate Contour, 10m Interval
- Conservation**
- Forest Reserve
- Settlement**
- 3000 Settlement



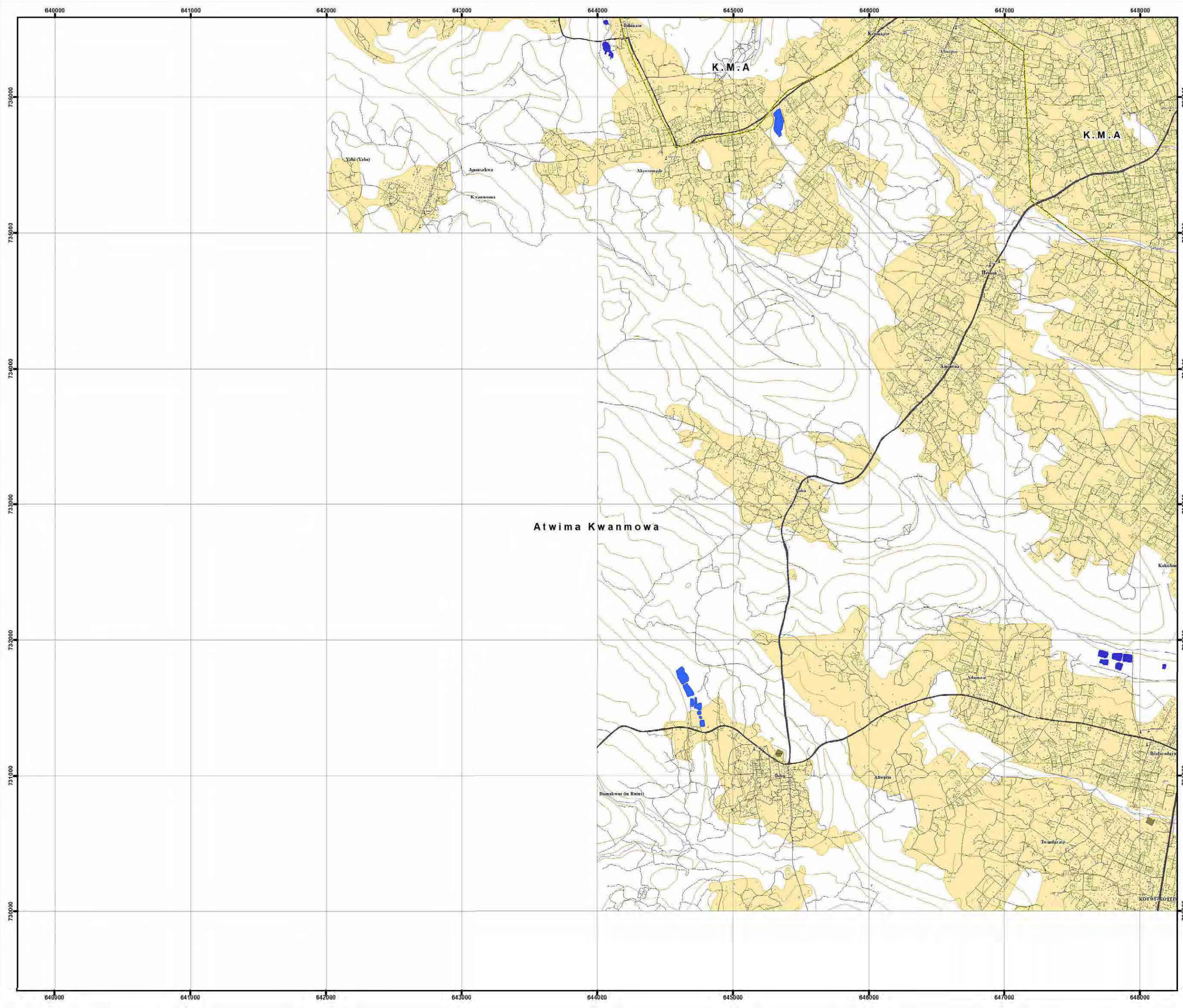
Map Projection:  
- Projected Coordinate System: WGS 1984 UTM Zone 30N  
- Projection: Transverse Mercator

Source:  
1) Ejana Orthophotomaps, L.A.P. 2008/2009  
2) Topographic Map, 1:50,000, SDG, 1972  
3) ASTER GDEM Version 2, METI and NASA



MINISTRY OF ENVIRONMENT, SCIENCE, TECHNOLOGY  
AND INNOVATION (MESTI)  
TOWN AND COUNTRY PLANNING DEPARTMENT (TCPD)  
JAPAN INTERNATIONAL COOPERATION AGENCY (JICA)

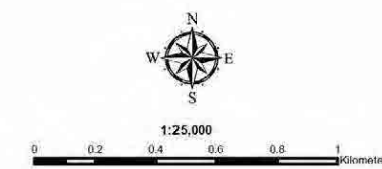
ORIENTAL CONSULTANTS Co., Ltd.  
CTI ENGINEERING INTERNATIONAL Co., Ltd.  
ALMEC CORPORATION





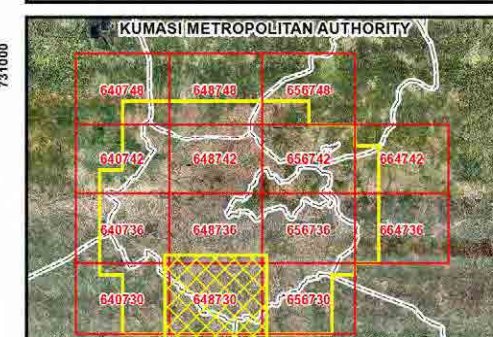
TOPOGRAPHIC MAP  
SCALE 1:10,000  
648730

- LEGEND**
- Administrative Boundary**
    - District Boundary
  - Building**
    - 3001 Permanent Building (More than 40m)
    - 3002 Building (More than 40m)
    - 3005 Building (Less than 39m)
    - 3524 School
    - 3523 Church
    - 3532 Hospital
    - 3539 Market
    - 3540 Mosque
  - Railway**
    - 2300 Railway
  - Road**
    - 2101 Main Road
    - 2103 Other Road
    - 2110 Runway
    - 2104 (Single Line) Road
    - 2105 Footpath
  - Hydrology**
    - 5101 Wide River
    - 5102 Wide Seasonal River
    - 5103 Wide Ditch
    - 5104 Wide Canal
    - 5105 Lake/Pond
    - 5106 Marsh, Swamp
    - 5201 (Single Line) River
    - 5202 (Single Line) Seasonal River
    - 5203 (Single Line) Ditch
    - 5204 (Single Line) Canal
  - Cartography**
    - 6141 Wall
    - 6142 Fence
  - Contour**
    - 7101 Index Contour, 50m Interval
    - 7102 Intermediate Contour, 10m Interval
  - Conservation**
    - Forest Reserve
  - Settlement**
    - 3000 Settlement



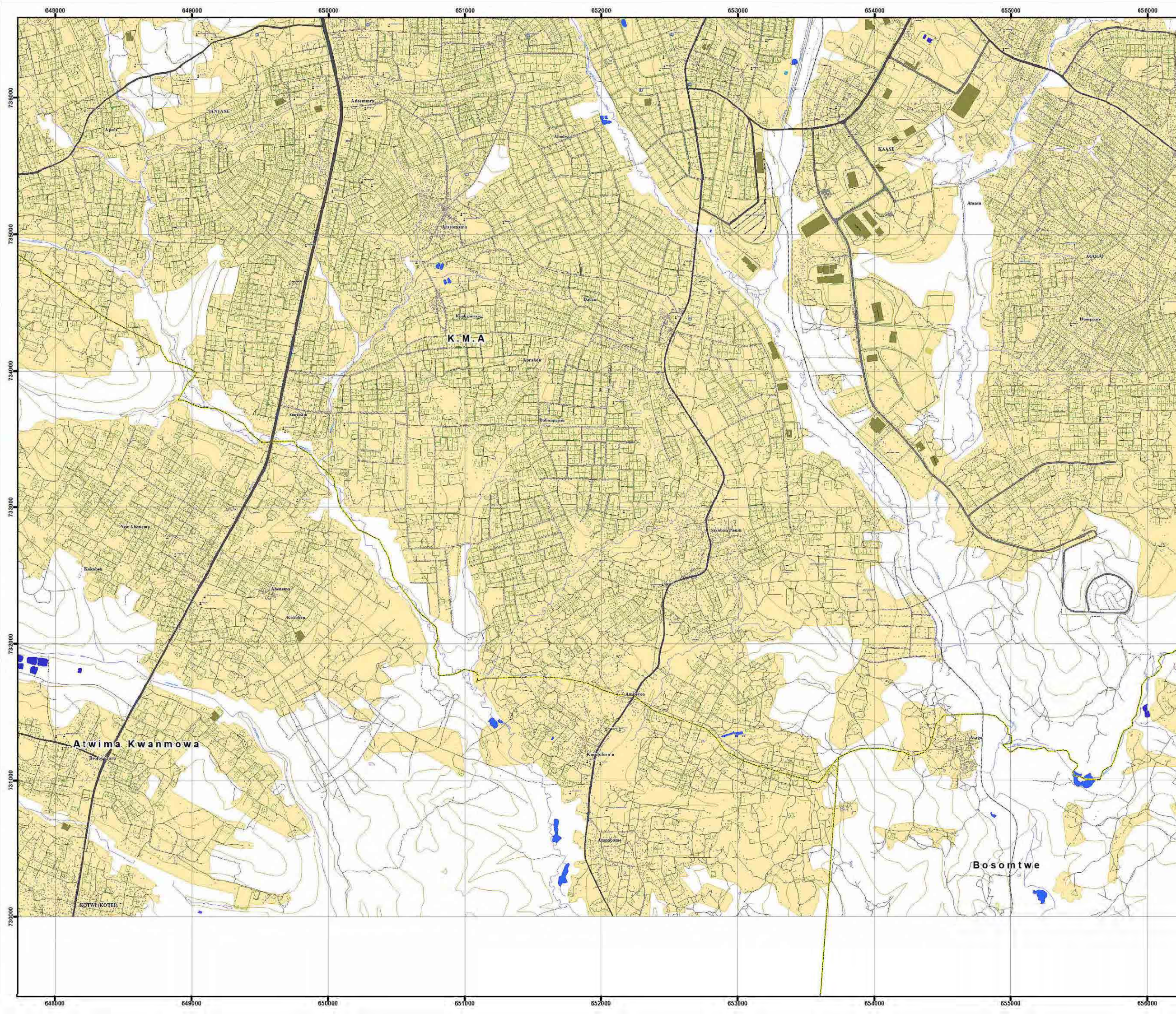
Map Projection:  
- Projected Coordinate System: WGS 1984 UTM Zone 30N  
- Projection: Transverse Mercator

Source:  
1) Ejura Orthophotomaps, L.A.P. 2008/2009  
2) Topographic Map, 1:50,000, SDG, 1972  
3) ASTER GDEM Version 2, METI and NASA



MINISTRY OF ENVIRONMENT, SCIENCE, TECHNOLOGY  
AND INNOVATION (MESTI)  
TOWN AND COUNTRY PLANNING DEPARTMENT (TCPD)  
JAPAN INTERNATIONAL COOPERATION AGENCY (JICA)

ORIENTAL CONSULTANTS Co., Ltd.  
CTI ENGINEERING INTERNATIONAL Co., Ltd.  
ALMCE CORPORATION

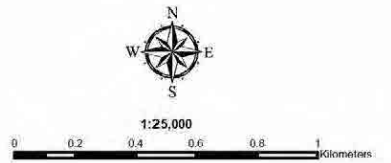




TOPOGRAPHIC MAP  
SCALE 1:10,000  
656730

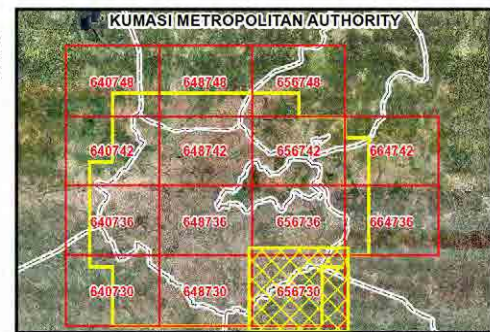
LEGEND

- Administrative Boundary**
  - District Boundary
- Building**
  - 3001 Permanent Building (More than 40m)
  - 3002 Building (More than 40m)
  - 3005 Building (Less than 39m)
  - 3524 School
  - 3523 Church
  - 3532 Hospital
  - 3539 Market
  - 3540 Mosque
- Railway**
  - 2300 Railway
- Road**
  - 2101 Main Road
  - 2103 Other Road
  - 2110 Runway
  - 2104 (Single Line) Road
  - 2105 Footpath
- Hydrology**
  - 5101 Wide River
  - 5102 Wide Seasonal River
  - 5103 Wide Ditch
  - 5104 Wide Canal
  - 5105 Lake/Pond
  - 5106 Marsh, Swamp
  - 5201 (Single Line) River
  - 5202 (Single Line) Seasonal River
  - 5203 (Single Line) Ditch
  - 5204 (Single Line) Canal
- Cartography**
  - 6141 Wall
  - 6142 Fence
- Contour**
  - 7101 Index Contour, 50m Interval
  - 7102 Intermediate Contour, 10m Interval
- Conservation**
  - Forest Reserve
- Settlement**
  - 3000 Settlement



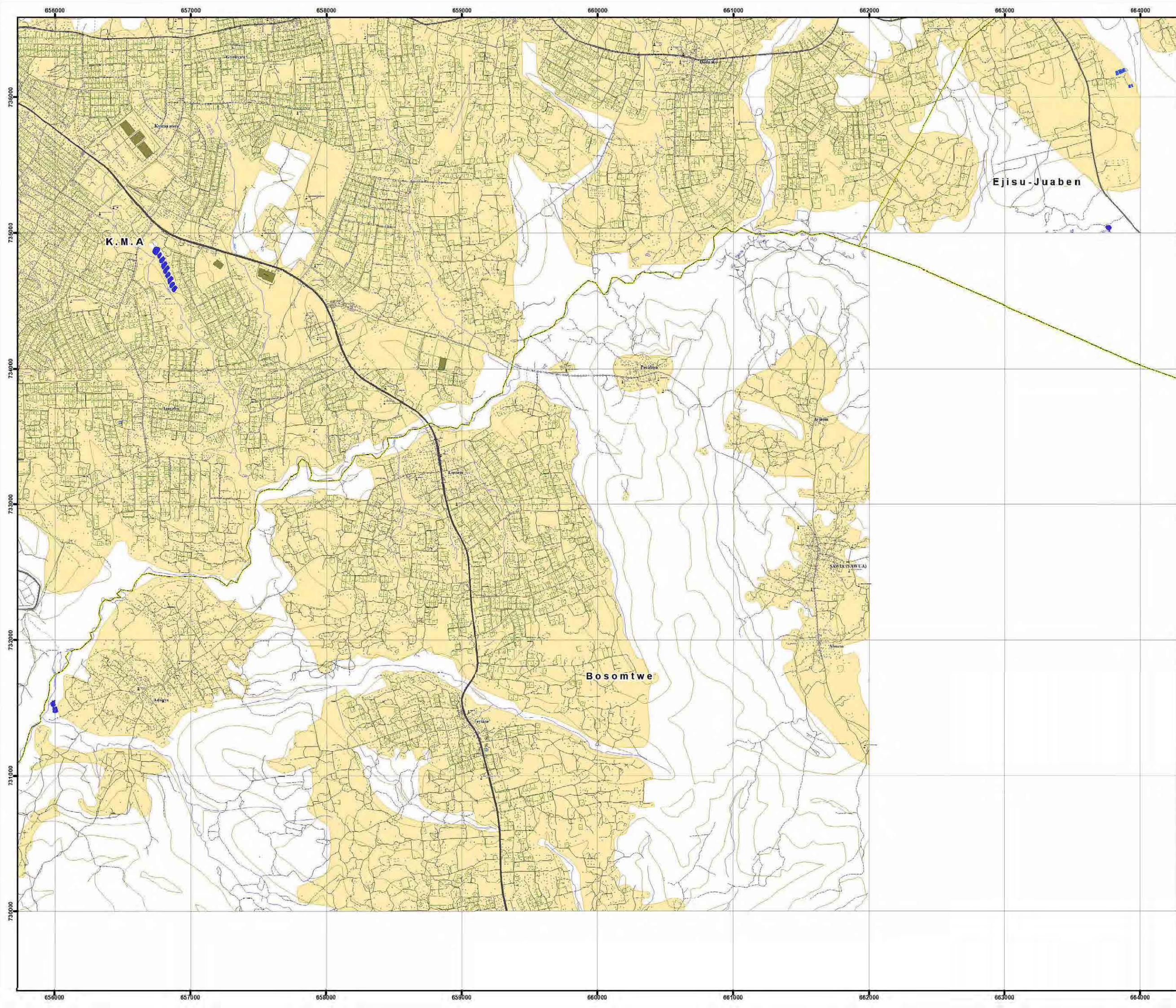
Map Projection:  
- Projected Coordinate System: WGS 1984 UTM Zone 30N  
- Projection: Transverse Mercator

Source:  
1) Ejisu Orthophotomaps, L.A.P. 2008/2009  
2) Topographic Map, 1:50,000, SDG, 1972  
3) ASTER GDEM Version 2, METI and NASA



MINISTRY OF ENVIRONMENT, SCIENCE, TECHNOLOGY  
AND INNOVATION (MESTI)  
TOWN AND COUNTRY PLANNING DEPARTMENT (TCPD)  
JAPAN INTERNATIONAL COOPERATION AGENCY (JICA)

ORIENTAL CONSULTANTS Co., Ltd.  
CTI ENGINEERING INTERNATIONAL Co., Ltd.  
ALMCE CORPORATION





**LAND USE MAP  
IN 2008  
SCALE 1:10,000  
MAPPING AREA**

**LEGEND**

**Administrative Boundary**

∕∕ District Boundary

**Transportation**

∕ 2300 Railway

∕ 2104 (Single Line) Road

**Hydrology**

∕ 5201 (Single Line) River

∕ 5202 (Single Line) Seasonal River

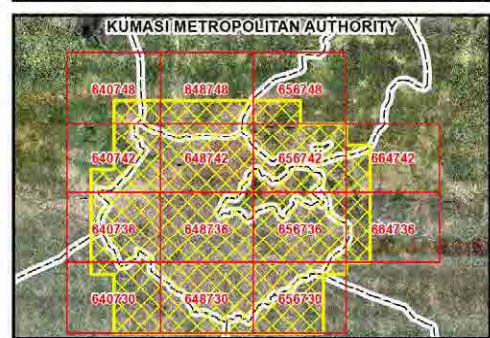
**Land Use**

- 210100 Main Road
- 210300 Other Road
- 211000 Runway (Airport)
- 300001 Commercial
- 300003 Industrial
- 300004 Educational
- 300005 Institutional
- 300021 High Density Residential
- 300022 Low Density Residential
- 300052 Utilities
- 400100 Cemetery (more than 100m x 100m)
- 400200 Market (more than 40m)
- 400300 Park
- 400400 Open Space/Sports Facility
- 400500 Other Land Use
- 510100 Wide River (more than 20m)
- 510500 Lake/Pond (more than 20m x 20m)
- 510600 Marsh, Swamp (more than 100m x 100m)
- 633000 Forest/Grove/Woodland (more than 100m x 100m)
- 633100 Bush (more than 100m x 100m)
- 633200 Grassland (more than 100m x 100m)
- 633300 Cultivated Field (more than 100m x 100m)



Map Projection:  
- Projected Coordinate System: WGS 1984 UTM Zone 30N  
- Projection: Transverse Mercator

Source:  
1) Ejiva Orthophotomaps, L.A.P. 2008/2009  
2) Topographic Map, 1:50,000, SDG, 1972  
3) Field Land Use Survey by JICA Study Team, 2012



MINISTRY OF ENVIRONMENT, SCIENCE, TECHNOLOGY  
AND INNOVATION (MESTI)  
TOWN AND COUNTRY PLANNING DEPARTMENT (TCPD)  
JAPAN INTERNATIONAL COOPERATION AGENCY (JICA)

ORIENTAL CONSULTANTS Co., Ltd.  
CTI ENGINEERING INTERNATIONAL Co., Ltd.  
ALMCE CORPORATION

