



PART II

Plan Maps



DIAGRAM FOR SPATIAL STRUCTURE FOR GREATER KUMASI SUB-REGION

Legend

- Centres -

- Primary Centre
- Secondary Centre
- Sub Centre
- Suburban Centre
- District Centre
- Municipal Capital (Greater Kumasi Sub-Region)
- District Capital (Greater Kumasi Sub-Region)
- Education Centre
- Logistics Centre
- Industrial Centre
- New Town
- Airport

- Roads -

- National Road
- Inter-Regional Road
- Regional Road
- Urban Arterial Road
- Major Feeder Road

- Railways -

- Old Railway Line
- Proposed Railway Line

- Urban Corridors -

- Primary Urban Corridor
- Secondary Urban Corridor

- Conservation -

- Conservation Area
- Forest Reserve

- Urbanized Area -

- Urbanized Area (2011)
- Urbanized Area (2033)

- Urban Growth Boundary -

- Urban Growth Boundary

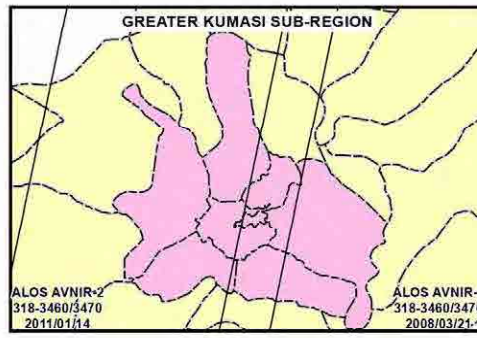
- Rural Area -

- Rural Planning Area



Map Projection:
 - Projected Coordinate System: WGS 1984 UTM Zone 30N
 - Projection: Transverse Mercator

Sources:
 1) ALOS AVNIR-2, JAXA, 2009/2011
 2) Topographic Map, 1:50,000, SDG, 1972
 3) ASTER GDEM Version 2, METI and NASA



MINISTRY OF ENVIRONMENT, SCIENCE, TECHNOLOGY AND INNOVATION (MESTI)
 TOWN AND COUNTRY PLANNING DEPARTMENT (TCPD)
 JAPAN INTERNATIONAL COOPERATION AGENCY (JICA)

ORIENTAL CONSULTANTS Co., Ltd.
 CTI ENGINEERING INTERNATIONAL Co., Ltd.
 ALMCE CORPORATION

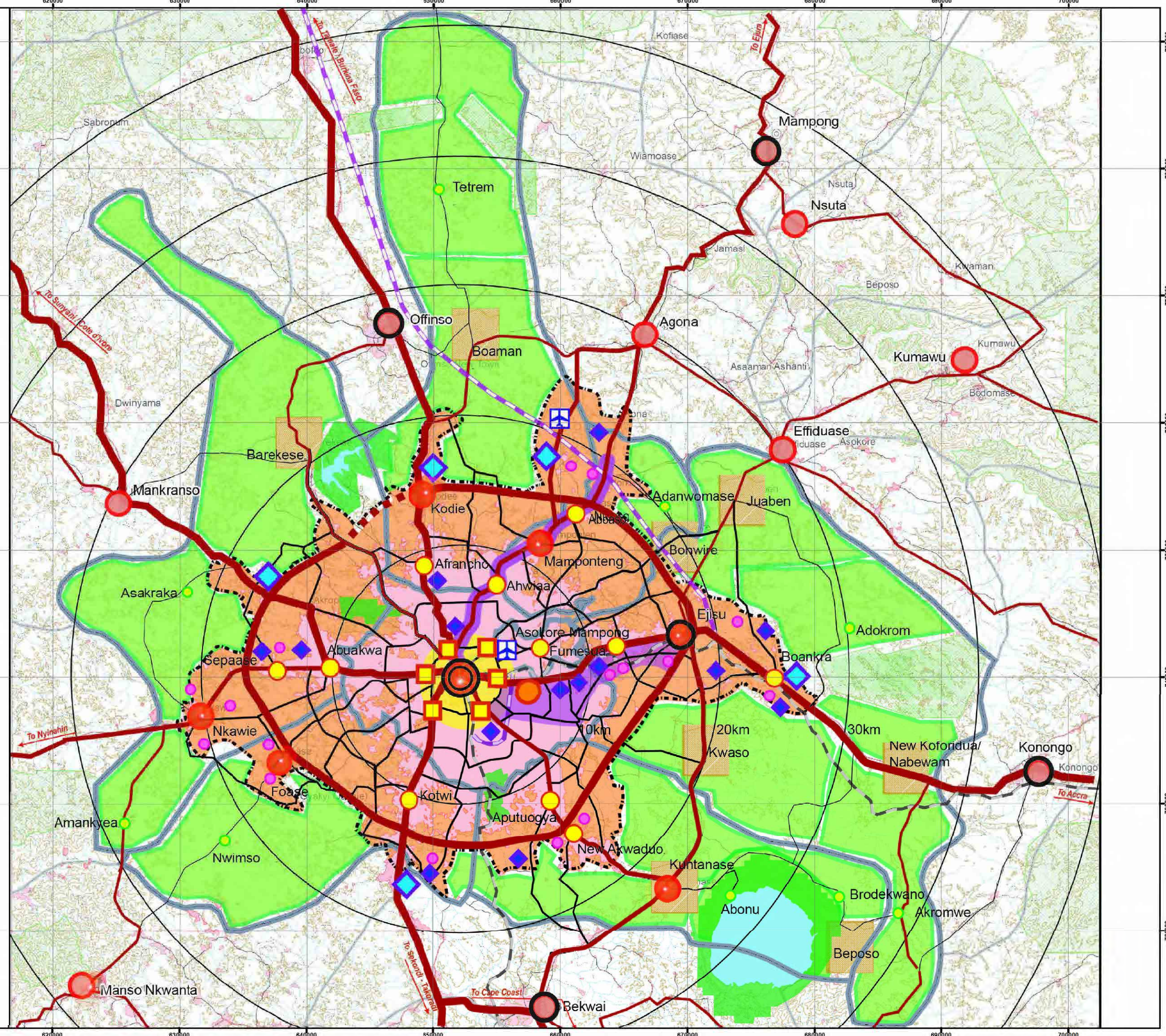
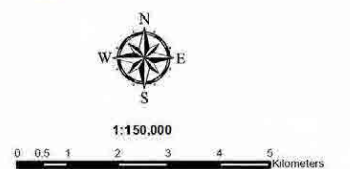


DIAGRAM FOR SPATIAL STRUCTURE FOR GREATER KUMASI CONURBATION

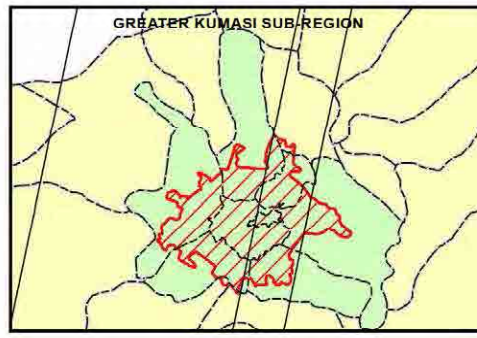
Legend

- Centres**
 - Primary Centre (Large red circle)
 - Secondary Centre (Medium red circle)
 - Sub Centre (Yellow square)
 - Suburban Centre (Yellow circle)
 - District Centre (Red circle)
 - Education Centre (Orange circle)
 - Logistics Centre (Blue diamond)
 - Industrial Centre (Purple diamond)
 - New Town (Pink circle)
 - Airport (Blue square with white cross)
- Roads**
 - Primary Arterial Road (Thick red line)
 - Major Arterial Road (Thick black line)
 - Minor Arterial Road (Thin black line)
 - Other Major Road (Dashed black line)
- Railways**
 - Old Railway Line (Dashed black line)
 - Proposed Railway Line (Purple dashed line)
- Urban Corridors**
 - Primary Urban Corridor (Thick red line)
 - Secondary Urban Corridor (Thin red line)
- Conservation**
 - Conservation Area (Green area)
 - Forest Reserve (Light green area)
- Urbanized Area**
 - Current Urbanized Area (Pink area)
 - Future Urbanized Area (Orange area)



Map Projection:
 - Projected Coordinate System: WGS 1984 UTM Zone 30N
 - Projection: Transverse Mercator

Source:
 1) ALOS AVNIR-2, JAXA, 2005/2011
 2) Topographic Map, 1:50,000, SDG, 1972
 3) ASTER GDEM Version 2, METI and NASA



MINISTRY OF ENVIRONMENT, SCIENCE, TECHNOLOGY AND INNOVATION (MESTI)
 TOWN AND COUNTRY PLANNING DEPARTMENT (TCPD)
 JAPAN INTERNATIONAL COOPERATION AGENCY (JICA)

ORIENTAL CONSULTANTS Co., Ltd.
 CTI ENGINEERING INTERNATIONAL Co., Ltd.
 ALMCE CORPORATION

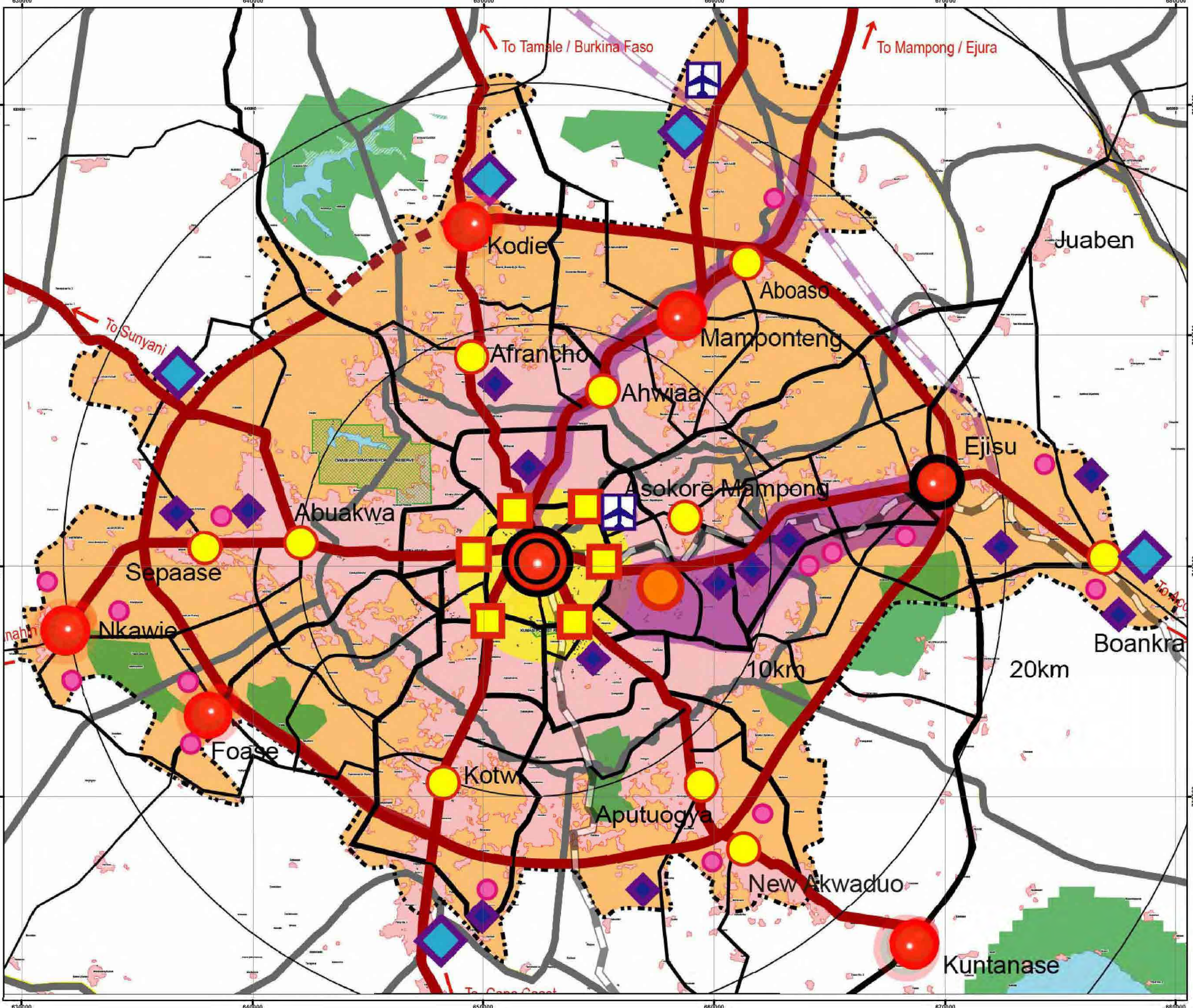
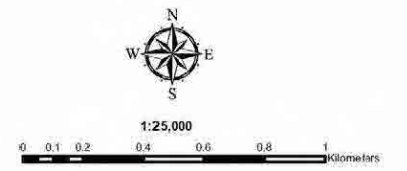


DIAGRAM FOR SPATIAL STRUCTURE FOR KUMASI CITY CENTRE

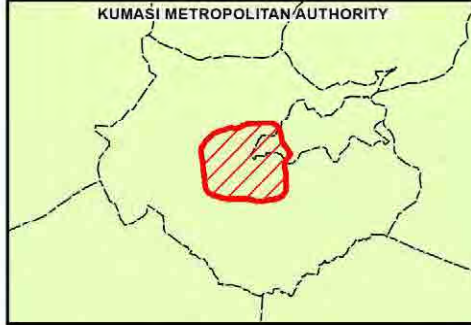
Legend

- Expanded CBD
- Sub Centre
- Action Area for Redevelopment (Private or PPP)
- Action Area for Ministry Expansion (Public)
- Open Space
- Natural Reserve
- Komfo Ankye Teaching Hospital
- University
- Airport
- Existing Road
- New Road



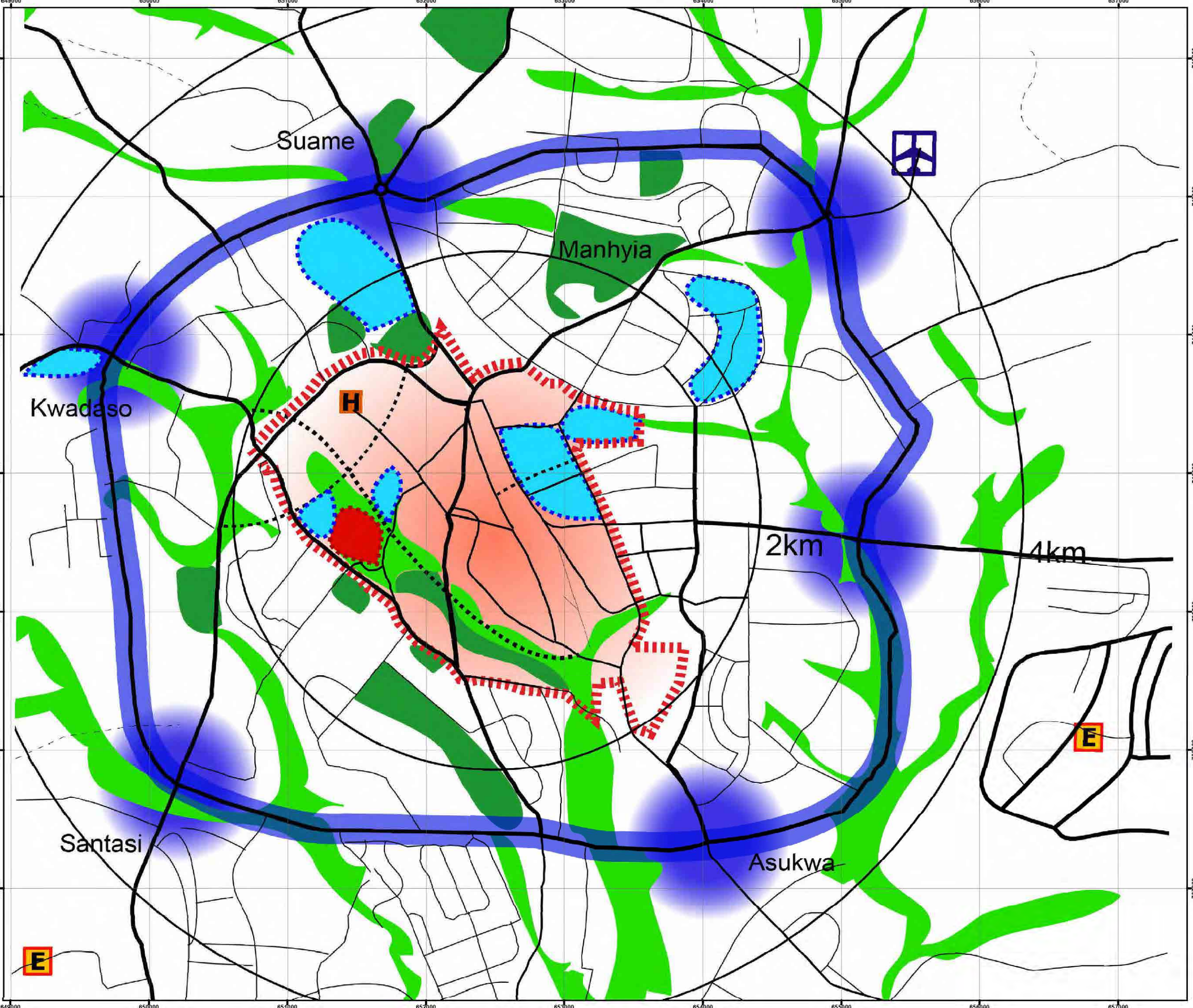
Map Projection:
 - Projected Coordinate System: WGS 1984 UTM Zone 30N
 - Projection: Transverse Mercator

Source:
 1) Orthophoto LAF 2008
 2) Topographic Map, 1:50,000, SDG, 1972



MINISTRY OF ENVIRONMENT, SCIENCE, TECHNOLOGY AND INNOVATION (MESTI)
 TOWN AND COUNTRY PLANNING DEPARTMENT (TCPD)
 JAPAN INTERNATIONAL COOPERATION AGENCY (JICA)

ORIENTAL CONSULTANTS Co., Ltd.
 CTI ENGINEERING INTERNATIONAL Co., Ltd.
 ALMEC CORPORATION



ROAD NETWORK PLAN OF GREATER KUMASI SUB-REGION

Legend

- Centres -

- Primary Centre
- Secondary Centre
- Suburban Centre
- District Centre
- Municipal Capital (Outside Greater Kumasi Sub-Region)
- District Capital (Outside Greater Kumasi Sub-Region)
- Airport
- Structure Plan Area
- Key Rural Town

- Roads -

- National Road
- Inter-Regional Road
- Regional Road
- Urban Arterial Road
- Major Feeder Road

- Proposed Roads -

- New Roads
- Upgraded Roads

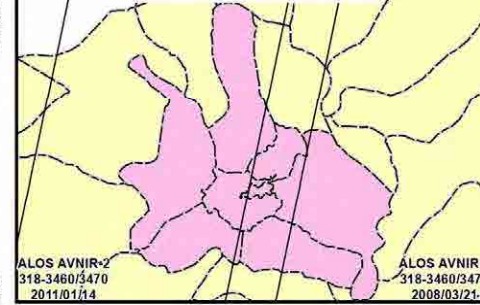


1:280,000
0 2 4 6 8 Kilometers

Map Projection:
- Projected Coordinate System: WGS 1984 UTM Zone 30N
- Projection: Transverse Mercator

Source:
1) ALOS AVNIR-2, JAXA, 2009/2011
2) Topographic Map, 1:50,000, SDG, 1972
3) ASTER GDEM Version 2, METI and NASA

GREATER KUMASI SUB-REGION

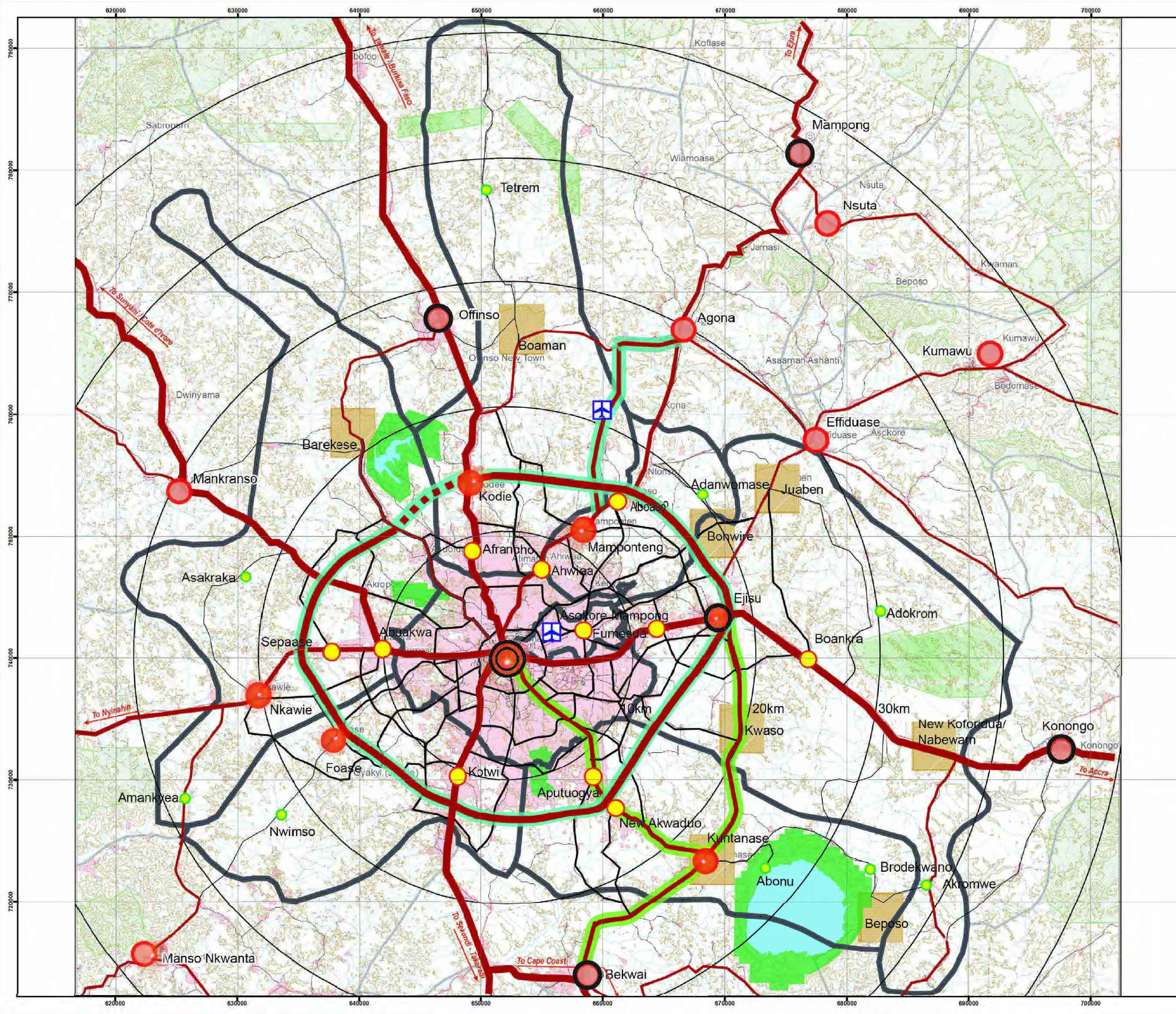


ALOS AVNIR-2
318-3460/3470
2011/01/14

ALOS AVNIR-2
318-3460/3470
2008/03/21

MINISTRY OF ENVIRONMENT, SCIENCE, TECHNOLOGY AND INNOVATION (MESTI)
TOWN AND COUNTRY PLANNING DEPARTMENT (TCPD)
JAPAN INTERNATIONAL COOPERATION AGENCY (JICA)

ORIENTAL CONSULTANTS Co., Ltd.
CTI ENGINEERING INTERNATIONAL Co., Ltd.
ALMEC CORPORATION



ROAD NETWORK PLAN OF GREATER KUMASI CONURBATION

Legend

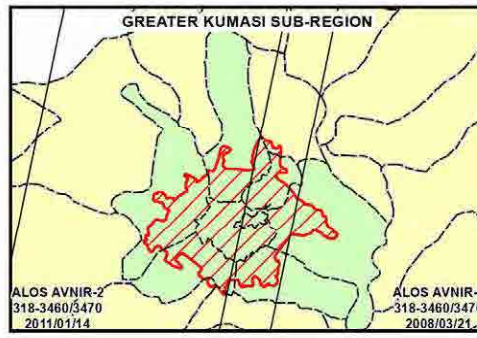
-  Primary Urban Arterial Road
-  Major Urban Arterial Road
-  Minor Urban Arterial Road
-  Major Feeder Road
-  Other Roads
-  District Capital
-  Major Town
-  Airport
-  Urban Growth Boundary
-  District Boundary
-  Hydro, Shoreline, py



1:175,000
0 0.5 1 2 3 4 5 Kilometers

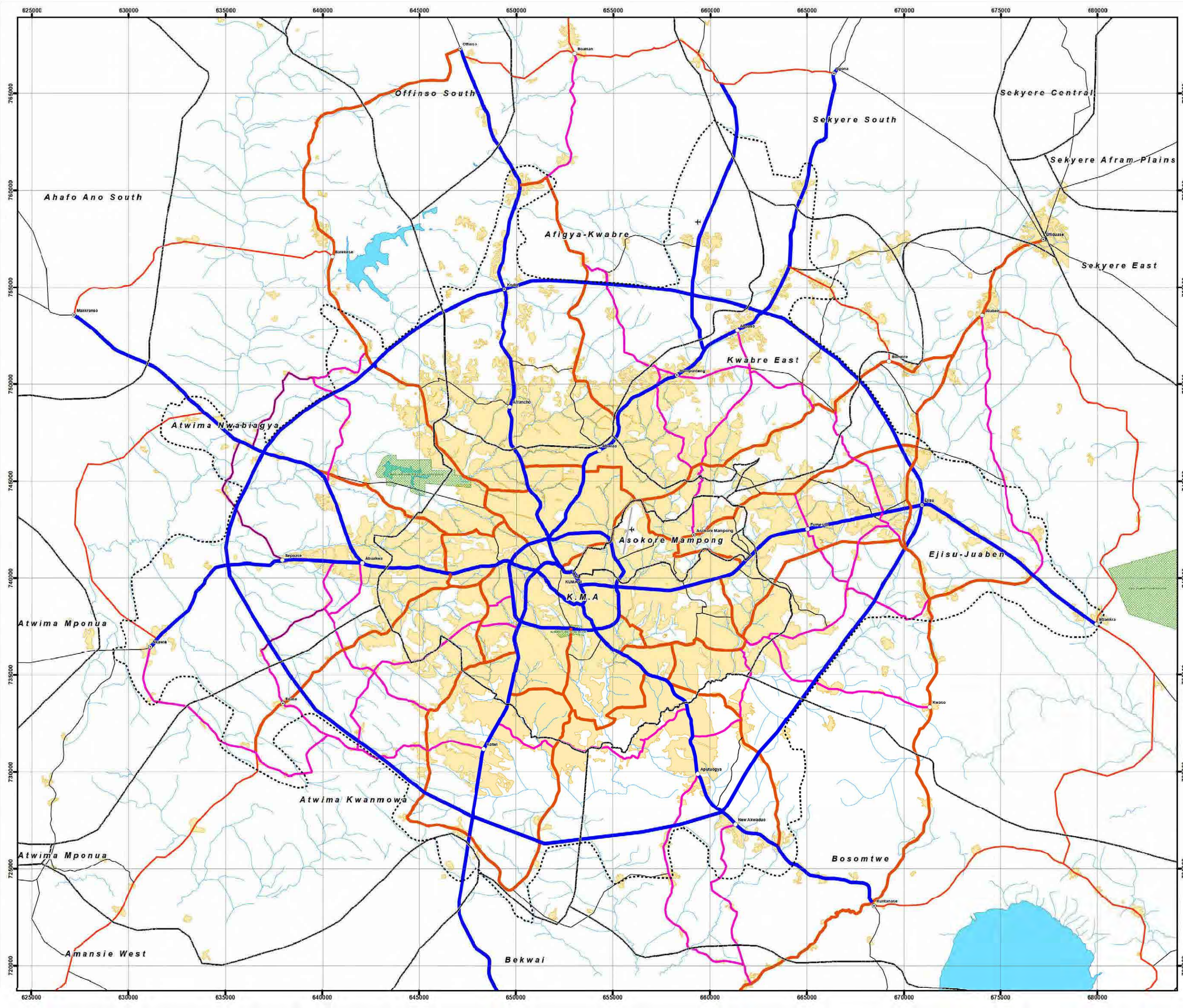
Map Projection:
- Projected Coordinate System: WGS 1984 UTM Zone 30N
- Projection: Transverse Mercator

Sources:
1) ALOS AVNIR-2, JAXA, 2008/2011
2) Topographic Map, 1:50,000, SDG, 1972
3) ASTER GDEM Version 2, METI and NASA



MINISTRY OF ENVIRONMENT, SCIENCE, TECHNOLOGY AND INNOVATION (MESTI)
TOWN AND COUNTRY PLANNING DEPARTMENT (TCPD)
JAPAN INTERNATIONAL COOPERATION AGENCY (JICA)

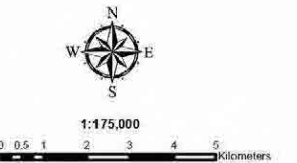
ORIENTAL CONSULTANTS Co., Ltd.
CTI ENGINEERING INTERNATIONAL Co., Ltd.
ALMCE CORPORATION



**GENERAL LAND USE PLAN 2028
IN
GREATER KUMASI CONURBATION**

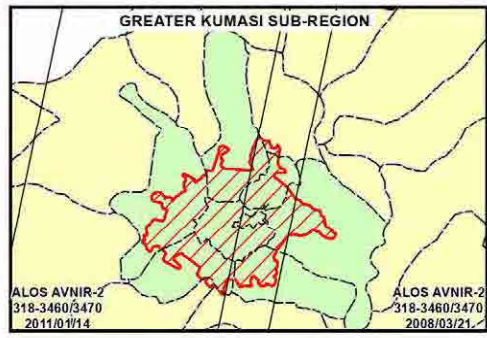
LEGEND

- Major Town
- Administrative Boundary
- District Boundary
- Urban Arterial Road
- Primary Urban Arterial Road
- Major Urban Arterial Road
- Minor Urban Arterial Road
- Railway
- General Land Use Plan
- Urban Growth Boundary
- Kumasi City Center
- Airport
- Industrial Area
- High Density Residential
- Low Density Residential
- New Town
- Existing Settlement
- Rural Area
- Education
- Commercial Area
- Other Institutional Area
- Conservation Area
- Open Space
- Lake/Pond
- Transportation & Warehousing



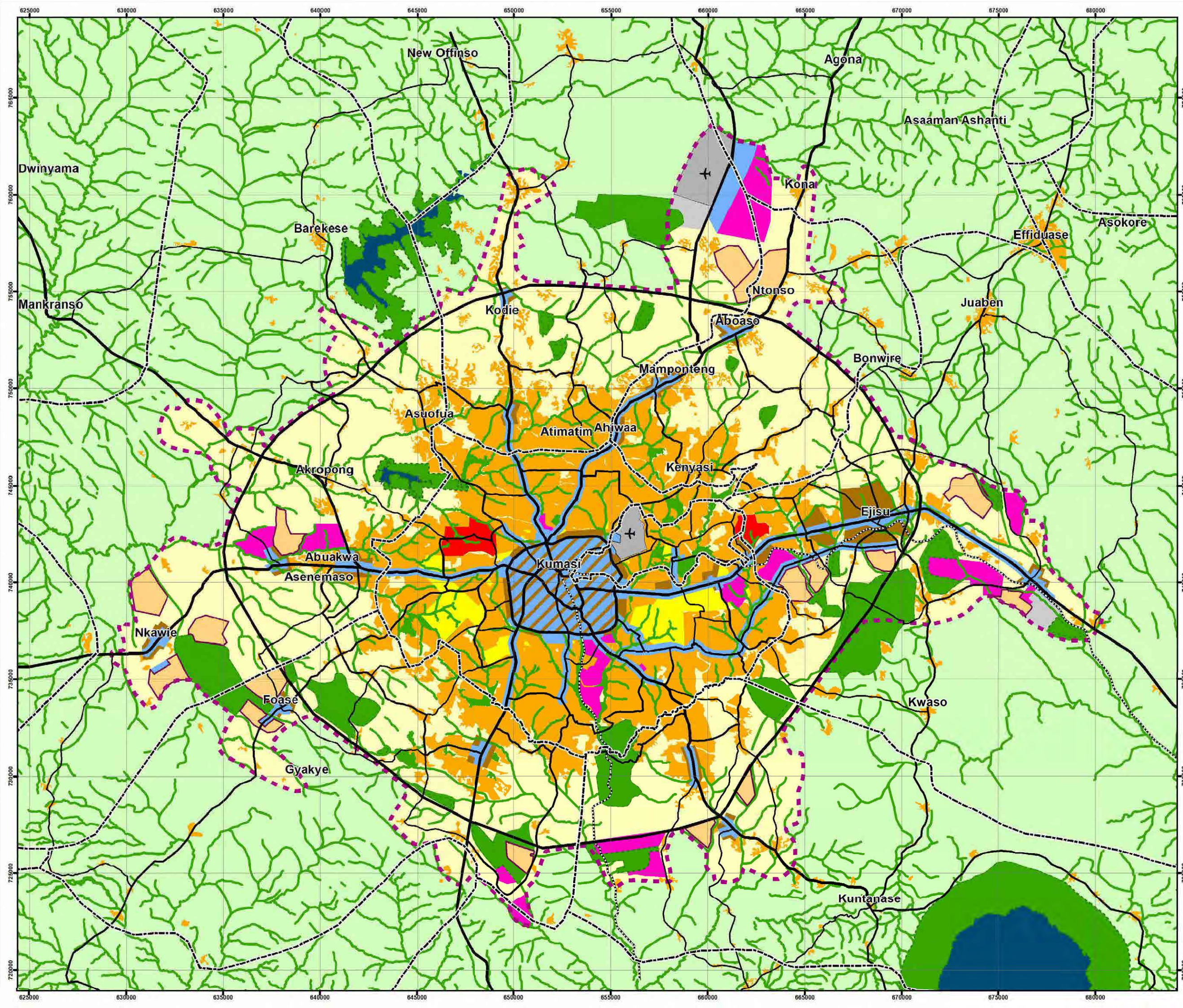
Map Projection:
- Projected Coordinate System: WGS 1984 UTM Zone 30N
- Projection: Transverse Mercator

Source:
1) Topographic Map, 1:50,000, SDC, 1972
2) ASTER GDEM Version 2, METI and NASA
3) ALOS AVNIR-2, JAXA, 2008/2011



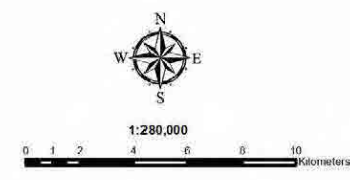
MINISTRY OF ENVIRONMENT, SCIENCE, TECHNOLOGY
AND INNOVATION (MESTI)
TOWN AND COUNTRY PLANNING DEPARTMENT (TCPD)
JAPAN INTERNATIONAL COOPERATION AGENCY (JICA)

ORIENTAL CONSULTANTS Co., Ltd.
CTI ENGINEERING INTERNATIONAL Co., Ltd.
ALMCE CORPORATION



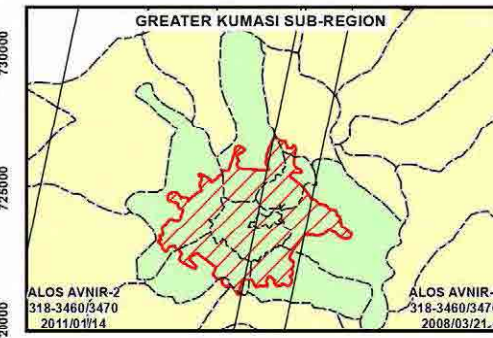
CONSERVATION AREAS SHOWN IN GREEN IN THE 2028 GENERAL LAND USE PLAN

- LEGEND**
- Administrative Boundary
 - District Boundary
 - Urban Arterial Road
 - Primary Urban Arterial Road
 - Major Urban Arterial Road
 - Minor Urban Arterial Road
 - Railway
 - General Land Use Plan
 - Urban Growth Boundary
 - Kumasi City Center
 - Airport
 - Industrial Area
 - High Density Residential
 - Low Density Residential
 - New Town
 - Existing Settlement
 - Rural Area
 - Education
 - Commercial Area
 - Other Institutional Area
 - Conservation Area
 - Open Space
 - Lake/Pond
 - Transportation & Warehousing



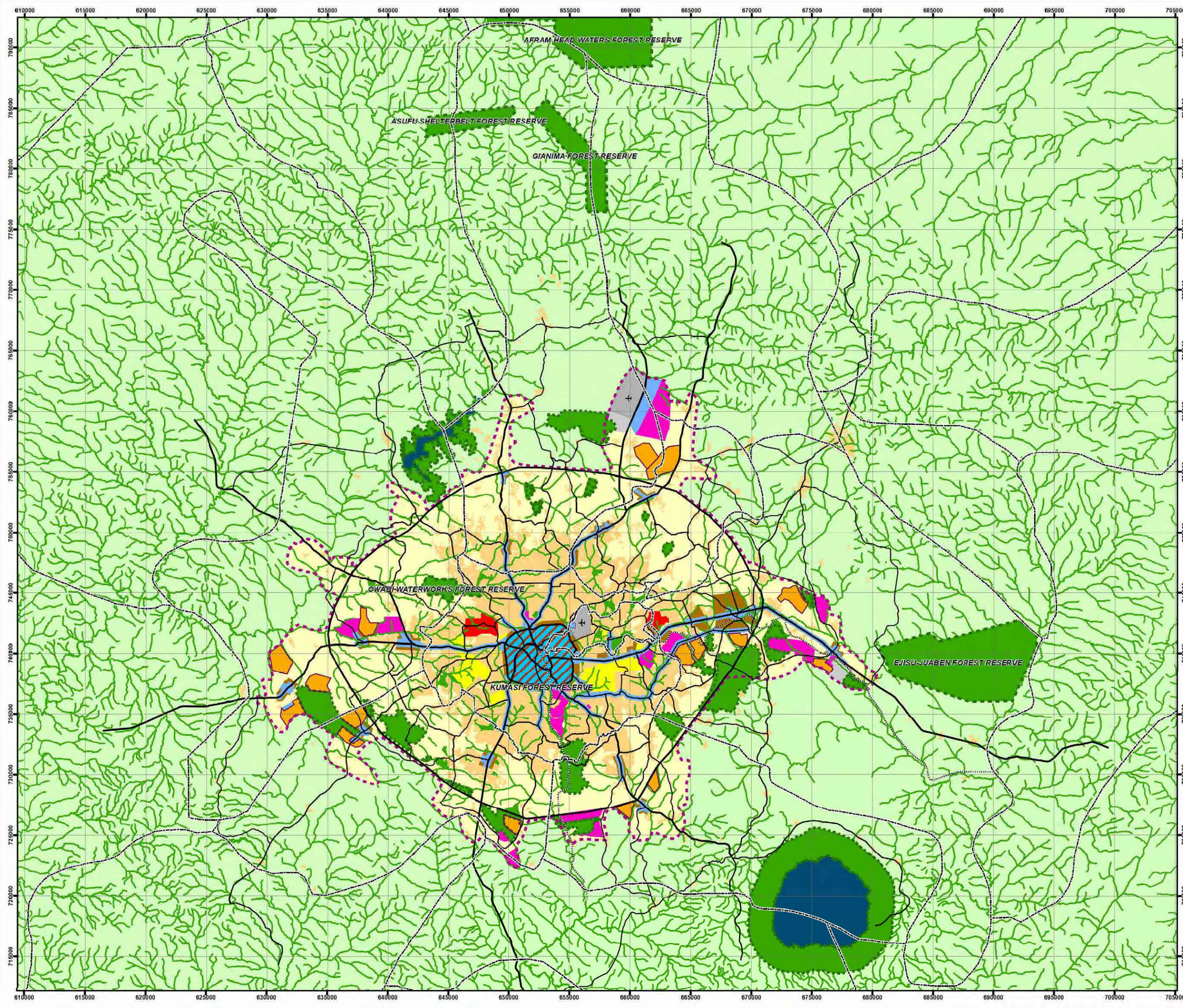
Map Projection:
 - Projected Coordinate System: WGS 1984 UTM Zone 30N
 - Projection: Transverse Mercator

Source:
 1) ALOS AVNIR-2, JAXA, 2009/2011
 2) Topographic Map, :50,000, SDG, 1972
 3) ASTER GDEM Version 2, METI and NASA



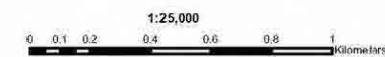
MINISTRY OF ENVIRONMENT, SCIENCE, TECHNOLOGY AND INNOVATION (MESTI)
 TOWN AND COUNTRY PLANNING DEPARTMENT (TCPD)
 JAPAN INTERNATIONAL COOPERATION AGENCY (JICA)

ORIENTAL CONSULTANTS Co., Ltd.
 CTI ENGINEERING INTERNATIONAL Co., Ltd.
 ALMEC CORPORATION



GENERAL LAND USE PLAN 2028 IN KUMASI CITY CENTRE

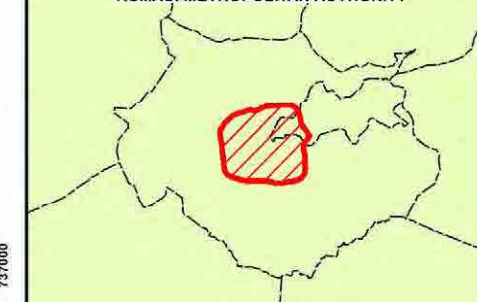
- LEGEND**
- Central Business District
 - Commercial/Business Area
 - Mixed Use, Business/Residential Area (Multi-Storey)
 - High-Density Residential Area (Multi-Storey)
 - Low-Density Residential Area
 - Educational Area (Large-scale)
 - Institutional Area (Government Office, Health and Military Use)
 - Industrial Area
 - Public Open Space/Recreation/Sports Area including Riparian Buffer Zone
 - Cultural and Historical Area



Map Projection:
- Projected Coordinate System: WGS 1984 UTM Zone 30N
- Projection: Transverse Mercator

Source:
1) Satellite photo LAF 2008
2) Topographic Map, 1:50,000, SDG, 1972

KUMASI METROPOLITAN AUTHORITY



MINISTRY OF ENVIRONMENT, SCIENCE, TECHNOLOGY
AND INNOVATION (MESTI)
TOWN AND COUNTRY PLANNING DEPARTMENT (TCPD)
JAPAN INTERNATIONAL COOPERATION AGENCY (JICA)

ORIENTAL CONSULTANTS Co., Ltd.
CTI ENGINEERING INTERNATIONAL Co., Ltd.
ALMCE CORPORATION

