

Ministry of Environment, Science, Technology and Innovation (MESTI)

Town and Country Planning Department (TCPD)

THE STUDY
ON
THE COMPREHENSIVE URBAN
DEVELOPMENT PLAN
FOR

GREATER KUMASI

IN
THE REPUBLIC OF GHANA



FINAL REPORT
GIS ATLAS

September 2013

Japan International Cooperation Agency (JICA)

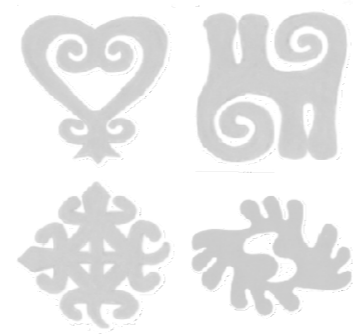
ORIENTAL CONSULTANTS CO., LTD.

CTI ENGINEERING INTERNATIONAL CO., LTD.

ALMEC CORPORATION

Ministry of Environment, Science, Technology and Innovation (MESTI)

Town and Country Planning Department (TCPD)



THE STUDY
ON
THE COMPREHENSIVE URBAN
DEVELOPMENT PLAN
FOR

GREATER KUMASI

IN
THE REPUBLIC OF GHANA



FINAL REPORT
GIS ATLAS

September 2013

Japan International Cooperation Agency (JICA)

ORIENTAL CONSULTANTS CO., LTD.

CTI ENGINEERING INTERNATIONAL CO., LTD.

ALMEC CORPORATION

**The Study on the Comprehensive Urban Development Plan
for Greater Kumasi in the Republic of Ghana
Final Report
GIS Atlas**

Table of Contents

Part I Introduction

0	Introduction
1	Administrative Boundary of Greater Kumasi Sub-Region
2	Base Map of Greater Kumasi Sub-Region

Part II Plan Maps

3	Plan Diagram of Greater Kumasi Sub-Region
4	Plan Diagram of Greater Kumasi Conurbation
5	Road Network Plan of Greater Kumasi Sub-Region
6	Road Network Plan of Greater Kumasi Conurbation
7	Plan Diagram and Road Network Plan of Kumasi City Centre
8	General Land Use Plan of Greater Kumasi Conurbation
9	Conservation Areas shown in Green in the 2028 General Land Use Plan
10	General Land Use Plan of Kumasi City Centre

Part III Topographic Maps and Present Land Use Maps

11	Topographic Map Scale 1:50,000 Mapping Area
12-1	Topographic Map Scale 1:50,000 0602A1
12-2	Topographic Map Scale 1:50,000 0602A2
12-3	Topographic Map Scale 1:50,000 0602B1
12-4	Topographic Map Scale 1:50,000 0602A3
12-5	Topographic Map Scale 1:50,000 0602A4
12-6	Topographic Map Scale 1:50,000 0602B2
13	Land Use Map in 2008/2011 Scale 1:50,000 Mapping Area
14-1	Land Use Map in 2008/2011 Scale 1:50,000 0602A1
14-2	Land Use Map in 2008/2011 Scale 1:50,000 0602A2
14-3	Land Use Map in 2008/2011 Scale 1:50,000 0602B1
14-4	Land Use Map in 2008/2011 Scale 1:50,000 0602A3
14-5	Land Use Map in 2008/2011 Scale 1:50,000 0602A4
14-6	Land Use Map in 2008/2011 Scale 1:50,000 0602B2
15	Topographic Map Scale 1:10,000 Mapping Area
16-1	Topographic Map Scale 1:10,000 640748
16-2	Topographic Map Scale 1:10,000 648748
16-3	Topographic Map Scale 1:10,000 656748
16-4	Topographic Map Scale 1:10,000 640742
16-5	Topographic Map Scale 1:10,000 648742
16-6	Topographic Map Scale 1:10,000 656742
16-7	Topographic Map Scale 1:10,000 664742
16-8	Topographic Map Scale 1:10,000 640736
16-9	Topographic Map Scale 1:10,000 648736
16-10	Topographic Map Scale 1:10,000 656736
16-11	Topographic Map Scale 1:10,000 664736
16-12	Topographic Map Scale 1:10,000 640730
16-13	Topographic Map Scale 1:10,000 648730
16-14	Topographic Map Scale 1:10,000 656730
17	Land Use Map in 2008 Scale 1:10,000 Mapping Area
18-1	Land Use Map in 2008 Scale 1:10,000 640748

18-2	Land Use Map in 2008 Scale 1:10,000 648748
18-3	Land Use Map in 2008 Scale 1:10,000 656748
18-4	Land Use Map in 2008 Scale 1:10,000 640742
18-5	Land Use Map in 2008 Scale 1:10,000 648742
18-6	Land Use Map in 2008 Scale 1:10,000 656742
18-7	Land Use Map in 2008 Scale 1:10,000 664742
18-8	Land Use Map in 2008 Scale 1:10,000 640736
18-9	Land Use Map in 2008 Scale 1:10,000 648736
18-10	Land Use Map in 2008 Scale 1:10,000 656736
18-11	Land Use Map in 2008 Scale 1:10,000 664736
18-12	Land Use Map in 2008 Scale 1:10,000 640730
18-13	Land Use Map in 2008 Scale 1:10,000 648730
18-14	Land Use Map in 2008 Scale 1:10,000 656730

Part IV Present Situation

19	Population Density 2010 in KMA
20	Population Density 2010 in Ashanti Region
21	Population Density 2010 in Greater Kumasi Sub-Region
22	Water Supply Pipeline of Ghana Water Company Ltd.



PART I

Introduction



Introduction

This is an atlas of GIS maps, which is part of the Final Report for the Study on the Comprehensive Urban Development Plan for Greater Kumasi. These GIS maps were prepared for the purpose of formulating the Spatial Development Framework (SDF) for the Greater Kumasi Sub-Region and the Structure Plan (SP) for the Greater Kumasi Conurbation.

Part I shows basic information on the Study Area for this planning Study.

Part II compiles the outputs of the spatial planning in the Study. The diagrams were prepared using graphics, but not GIS. The general land use plans and road network plans were created using GIS.

Part III shows topographic maps and present land use maps at different scales.

One set was prepared using aerial photographs taken for the Land Administration Project (World Bank) at a scale of 1:50,000.

The other was prepared at a scale of 1:10,000 by using ALOS imagery. The present land use map at a scale of 1:10,000 was also based on the field survey done by the JICA Study Team.

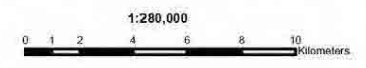
Part IV compiles population density maps based on the 2010 population census and a water pipeline network map of Ghana Water Company Limited.

The data of these GIS maps were also compiled in the form of CD-ROM.



ADMINISTRATIVE BOUNDARY OF GREATER KUMASI SUB-REGION

- LEGEND**
- Major Town
 - ▭ District Boundary
 - ≡ Railway
 - ≡ Class 1 Road
 - ≡ Class 2 Road
 - ≡ Class 3 Road
 - ≡ Siding Road
 - ≡ Track Road
 - ≡ Trail Road
 - ~ Rivers
 - ~ Index Contour
 - ▭ Buildings
 - ▭ Airstrip
 - ▭ Marsh
 - ▭ Mud
 - ▭ Lake/Reservoir
 - ▭ Forest Reserve
 - ▭ Urbanized Area in 2011



Map Projection:
 - Projected Coordinate System: WGS 1984 UTM Zone 30N
 - Projection: Transverse Mercator

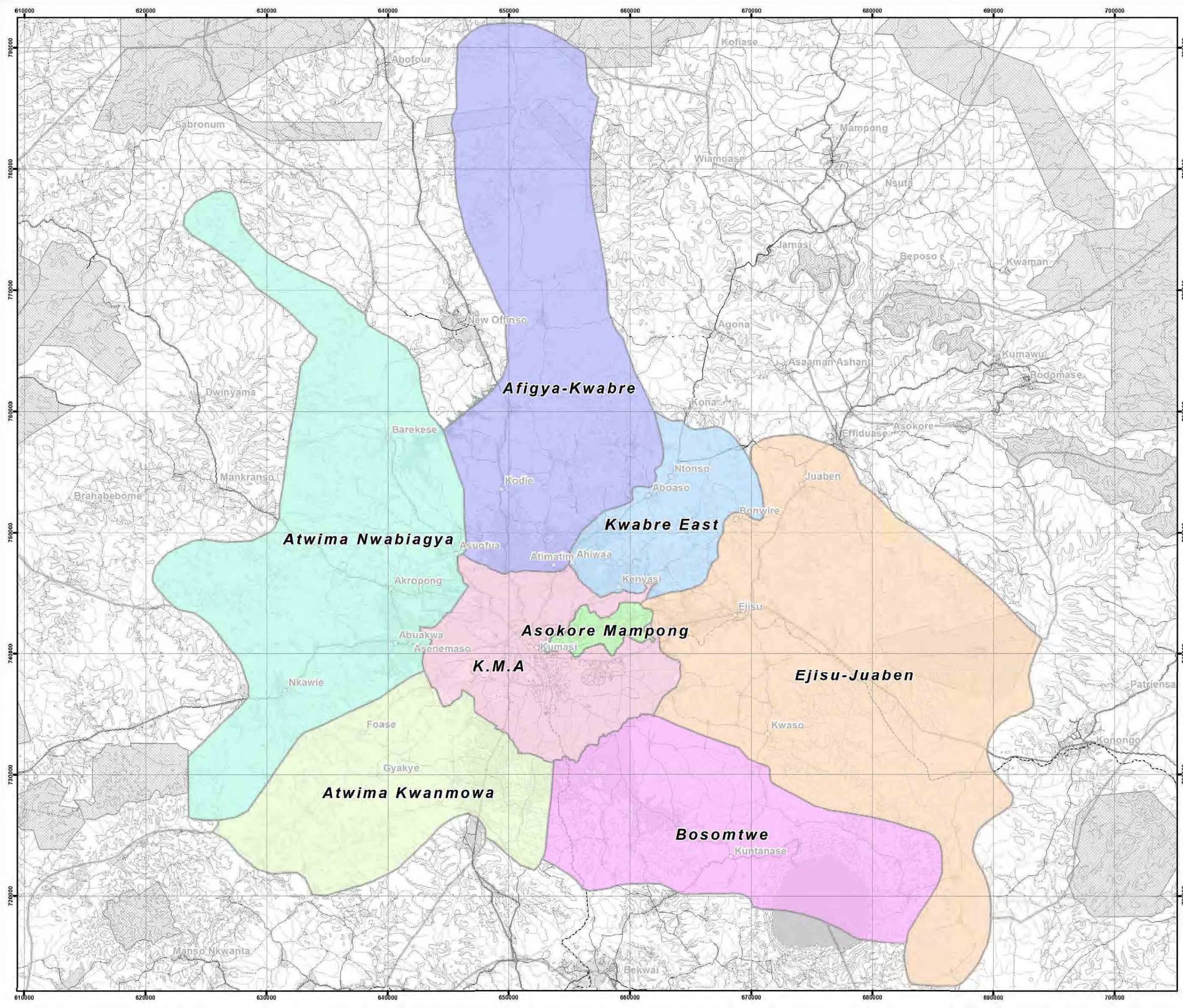
Source:
 1) ALOS AVNIR-2, JAXA, 2009/2011
 2) Topographic Map, 1:50,000, SDG, 1972
 3) ASTER GDEM Version 2, METI and NASA

ASHANTI REGION



MINISTRY OF ENVIRONMENT, SCIENCE, TECHNOLOGY AND INNOVATION (MESTI)
 TOWN AND COUNTRY PLANNING DEPARTMENT (TCPD)
 JAPAN INTERNATIONAL COOPERATION AGENCY (JICA)

ORIENTAL CONSULTANTS Co., Ltd.
 CTI ENGINEERING INTERNATIONAL Co., Ltd.
 ALMCE CORPORATION



**BASE MAP OF
GREATER KUMASI
SUB-REGION**

LEGEND

-  Major Town
-  District Boundary
-  Railway
-  Class 1 Road
-  Class 2 Road
-  Class 3 Road
-  Siding Road
-  Track Road
-  Trail Road
-  Rivers
-  Index Contour
-  Buildings
-  Airstrip
-  Marsh
-  Mud
-  Lake/Reservoir
-  Forest Reserve
-  Urbanized Area in 2011

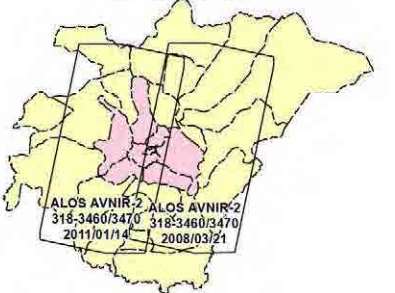


1:280,000
0 1 2 4 6 8 10 Kilometers

Map Projection:
- Projected Coordinate System: WGS 1984 UTM Zone 30N
- Projection: Transverse Mercator

Source:
1) ALOS AVNIR-2, JAXA, 2008/2011
2) Topographic Map, 1:50,000, SDG, 1972
3) ASTER GDEM Version 2, METI and NASA

ASHANTI REGION



ALOS AVNIR-2, ALOS AVNIR-2
318:3460/3470 318:3460/3470
2011/01/14 2008/03/21

MINISTRY OF ENVIRONMENT, SCIENCE, TECHNOLOGY
AND INNOVATION (MESTI)
TOWN AND COUNTRY PLANNING DEPARTMENT (TCPD)
JAPAN INTERNATIONAL COOPERATION AGENCY (JICA)

ORIENTAL CONSULTANTS Co., Ltd.
CTI ENGINEERING INTERNATIONAL Co., Ltd.
ALMCE CORPORATION

