

## Appendix 4(1)

	Serial no.	HH name	Employment	GN	DS	District
<b>Wadullawatta</b>						
1.			6	Wadulla	Kolonnawa	Colombo
2.			8	Wadulla	Kolonnawa	Colombo
3.			8	Wadulla	Kolonnawa	Colombo
4.			6	Wadulla	Kolonnawa	Colombo
5.			6	Wadulla	Kolonnawa	Colombo
6.			5	Wadulla	Kolonnawa	Colombo
7.			4	Wadulla	Kolonnawa	Colombo
8.			8	Wadulla	Kolonnawa	Colombo
9.			5	Wadulla	Kolonnawa	Colombo
10.			4	Wadulla	Kolonnawa	Colombo
11.			4	Wadulla	Kolonnawa	Colombo
12.			4	Wadulla	Kolonnawa	Colombo
13.			6	Wadulla	Kolonnawa	Colombo
14.			4	Wadulla	Kolonnawa	Colombo
15.			6	Wadulla	Kolonnawa	Colombo
16.			4	Wadulla	Kolonnawa	Colombo
17.			7	Wadulla	Kolonnawa	Colombo
18.			8	Wadulla	Kolonnawa	Colombo
19.			6	Wadulla	Kolonnawa	Colombo
20.			4	Wadulla	Kolonnawa	Colombo
21.			4	Wadulla	Kolonnawa	Colombo
22.			4	Wadulla	Kolonnawa	Colombo
23.			4	Wadulla	Kolonnawa	Colombo
24.			4	Wadulla	Kolonnawa	Colombo
25.			6	Wadulla	Kolonnawa	Colombo
26.			6	Wadulla	Kolonnawa	Colombo
27.			7	Wadulla	Kolonnawa	Colombo
28.			6	Wadulla	Kolonnawa	Colombo
29.			2	Wadulla	Kolonnawa	Colombo
30.			2	Wadulla	Kolonnawa	Colombo
31.			3	Wadulla	Kolonnawa	Colombo
32.			6	Wadulla	Kolonnawa	Colombo
33.			8	Wadulla	Kolonnawa	Colombo
34.			7	Wadulla	Kolonnawa	Colombo
35.			4	Wadulla	Kolonnawa	Colombo
36.			7	Wadulla	Kolonnawa	Colombo
37.			4	Wadulla	Kolonnawa	Colombo
38.			7	Wadulla	Kolonnawa	Colombo
39.			6	Wadulla	Kolonnawa	Colombo

40.		4	Wadulla	Kolonnawa	Colombo
41.		4	Wadulla	Kolonnawa	Colombo
42.		7	Wadulla	Kolonnawa	Colombo
43.		4	Wadulla	Kolonnawa	Colombo
44.		4	Wadulla	Kolonnawa	Colombo
45.		10	Wadulla	Kolonnawa	Colombo
46.		3	Wadulla	Kolonnawa	Colombo
47.		7	Wadulla	Kolonnawa	Colombo
48.		11	Wadulla	Kolonnawa	Colombo
49.		8	Wadulla	Kolonnawa	Colombo
50.		6	Wadulla	Kolonnawa	Colombo
51.		3	Wadulla	Kolonnawa	Colombo
52.		3	Wadulla	Kolonnawa	Colombo
53.		8	Wadulla	Kolonnawa	Colombo
54.		6	Wadulla	Kolonnawa	Colombo
55.		4	Wadulla	Kolonnawa	Colombo
56.		3	Wadulla	Kolonnawa	Colombo
57.		6	Wadulla	Kolonnawa	Colombo
58.		3	Wadulla	Kolonnawa	Colombo
59.		4	Wadulla	Kolonnawa	Colombo
60.		6	Wadulla	Kolonnawa	Colombo
61.		4	Wadulla	Kolonnawa	Colombo
62.		6	Wadulla	Kolonnawa	Colombo
63.		4	Wadulla	Kolonnawa	Colombo
64.		6	Wadulla	Kolonnawa	Colombo
65.		4	Wadulla	Kolonnawa	Colombo
66.		6	Wadulla	Kolonnawa	Colombo
67.		10	Wadulla	Kolonnawa	Colombo
68.		4	Wadulla	Kolonnawa	Colombo
69.		6	Wadulla	Kolonnawa	Colombo
70.		4	Wadulla	Kolonnawa	Colombo
71.		4	Wadulla	Kolonnawa	Colombo
72.		6	Wadulla	Kolonnawa	Colombo
73.		6	Wadulla	Kolonnawa	Colombo
74.		4	Wadulla	Kolonnawa	Colombo
75.		8	Wadulla	Kolonnawa	Colombo
76.		6	Wadulla	Kolonnawa	Colombo
77.		4	Wadulla	Kolonnawa	Colombo
78.		4	Wadulla	Kolonnawa	Colombo
79.		6	Wadulla	Kolonnawa	Colombo
80.		4	Wadulla	Kolonnawa	Colombo
81.		3	Wadulla	Kolonnawa	Colombo
82.		4	Wadulla	Kolonnawa	Colombo

83.		4	Wadulla	Kolonnawa	Colombo
84.		11	Wadulla	Kolonnawa	Colombo
85.		4	Wadulla	Kolonnawa	Colombo
86.		8	Wadulla	Kolonnawa	Colombo
87.		4	Wadulla	Kolonnawa	Colombo
88.		4	Wadulla	Kolonnawa	Colombo
89.		3	Wadulla	Kolonnawa	Colombo
90.		4	Wadulla	Kolonnawa	Colombo
91.		11	Wadulla	Kolonnawa	Colombo
92.		10	Wadulla	Kolonnawa	Colombo
93.		6	Wadulla	Kolonnawa	Colombo
94.		4	Wadulla	Kolonnawa	Colombo
95.		6	Wadulla	Kolonnawa	Colombo
96.		4	Wadulla	Kolonnawa	Colombo
97.		6	Wadulla	Kolonnawa	Colombo
98.		6	Wadulla	Kolonnawa	Colombo
99.		6	Wadulla	Kolonnawa	Colombo
100.		4	Wadulla	Kolonnawa	Colombo
101.		4	Wadulla	Kolonnawa	Colombo
102.		4	Wadulla	Kolonnawa	Colombo
103.		4	Wadulla	Kolonnawa	Colombo
104.		6	Wadulla	Kolonnawa	Colombo
105.		2	Wadulla	Kolonnawa	Colombo
106.		6	Wadulla	Kolonnawa	Colombo
107.		4	Wadulla	Kolonnawa	Colombo
108.		2	Wadulla	Kolonnawa	Colombo
109.		4	Wadulla	Kolonnawa	Colombo
110.		4	Wadulla	Kolonnawa	Colombo
111.		2	Wadulla	Kolonnawa	Colombo
112.		4	Wadulla	Kolonnawa	Colombo
113.		8	Wadulla	Kolonnawa	Colombo
114.		4	Wadulla	Kolonnawa	Colombo
115.		4	Wadulla	Kolonnawa	Colombo
116.		4	Wadulla	Kolonnawa	Colombo
117.		9	Wadulla	Kolonnawa	Colombo
118.		7	Wadulla	Kolonnawa	Colombo
119.		6	Wadulla	Kolonnawa	Colombo
120.		8	Wadulla	Kolonnawa	Colombo
121.		4	Wadulla	Kolonnawa	Colombo
122.		10	Wadulla	Kolonnawa	Colombo
123.		8	Wadulla	Kolonnawa	Colombo
124.		3	Wadulla	Kolonnawa	Colombo
125.		8	Wadulla	Kolonnawa	Colombo

126.		8	Wadulla	Kolonnawa	Colombo
127.		8	Wadulla	Kolonnawa	Colombo
128.		6	Wadulla	Kolonnawa	Colombo
129.		8	Wadulla	Kolonnawa	Colombo
130.		8	Wadulla	Kolonnawa	Colombo
131.		4	Wadulla	Kolonnawa	Colombo
132.		6	Wadulla	Kolonnawa	Colombo
133.		6	Wadulla	Kolonnawa	Colombo
134.		8	Wadulla	Kolonnawa	Colombo
135.		6	Wadulla	Kolonnawa	Colombo
136.		4	Wadulla	Kolonnawa	Colombo
137.		4	Wadulla	Kolonnawa	Colombo
138.		6	Wadulla	Kolonnawa	Colombo
139.		3	Wadulla	Kolonnawa	Colombo
140.		3	Wadulla	Kolonnawa	Colombo
141.		4	Wadulla	Kolonnawa	Colombo
142.		4	Wadulla	Kolonnawa	Colombo
143.		6	Wadulla	Kolonnawa	Colombo
144.		4	Wadulla	Kolonnawa	Colombo
145.		6	Wadulla	Kolonnawa	Colombo
146.		6	Wadulla	Kolonnawa	Colombo
147.		6	Wadulla	Kolonnawa	Colombo
148.		4	Wadulla	Kolonnawa	Colombo
149.		2	Wadulla	Kolonnawa	Colombo
150.		6	Wadulla	Kolonnawa	Colombo
151.		6	Wadulla	Kolonnawa	Colombo
152.		1	Wadulla	Kolonnawa	Colombo
153.		3	Wadulla	Kolonnawa	Colombo
154.		6	Wadulla	Kolonnawa	Colombo
155.		4	Wadulla	Kolonnawa	Colombo
156.		5	Wadulla	Kolonnawa	Colombo
157.		4	Wadulla	Kolonnawa	Colombo
158.		4	Wadulla	Kolonnawa	Colombo
159.		10	Wadulla	Kolonnawa	Colombo
160.		4	Wadulla	Kolonnawa	Colombo
161.		2	Wadulla	Kolonnawa	Colombo
162.		10	Wadulla	Kolonnawa	Colombo
163.		2	Wadulla	Kolonnawa	Colombo
164.		4	Wadulla	Kolonnawa	Colombo
165.		4	Wadulla	Kolonnawa	Colombo
166.		1	Wadulla	Kolonnawa	Colombo
167.		11	Wadulla	Kolonnawa	Colombo

168.		1	Wadulla	Kolonnawa	Colombo
169.		4	Wadulla	Kolonnawa	Colombo
170.		8	Wadulla	Kolonnawa	Colombo
171.		4	Wadulla	Kolonnawa	Colombo
172.		10	Wadulla	Kolonnawa	Colombo
173.		4	Wadulla	Kolonnawa	Colombo
174.		8	Wadulla	Kolonnawa	Colombo
175.		4	Wadulla	Kolonnawa	Colombo
176.		5	Wadulla	Kolonnawa	Colombo
177.		4	Wadulla	Kolonnawa	Colombo
178.		3	Wadulla	Kolonnawa	Colombo
179.		4	Wadulla	Kolonnawa	Colombo
180.		10	Wadulla	Kolonnawa	Colombo
181.		4	Wadulla	Kolonnawa	Colombo
182.		3	Wadulla	Kolonnawa	Colombo
183.		6	Wadulla	Kolonnawa	Colombo
184.		6	Wadulla	Kolonnawa	Colombo
185.		4	Wadulla	Kolonnawa	Colombo
186.		10	Wadulla	Kolonnawa	Colombo
187.		6	Wadulla	Kolonnawa	Colombo
188.		4	Wadulla	Kolonnawa	Colombo
189.		4	Wadulla	Kolonnawa	Colombo
190.		4	Wadulla	Kolonnawa	Colombo
191.		4	Wadulla	Kolonnawa	Colombo
192.		6	Wadulla	Kolonnawa	Colombo
193.		4	Wadulla	Kolonnawa	Colombo
194.		2	Wadulla	Kolonnawa	Colombo
195.		4	Wadulla	Kolonnawa	Colombo
196.		10	Wadulla	Kolonnawa	Colombo
197.		7	Wadulla	Kolonnawa	Colombo
198.		2	Wadulla	Kolonnawa	Colombo
199.		6	Wadulla	Kolonnawa	Colombo
200.		6	Wadulla	Kolonnawa	Colombo
201.		4	Wadulla	Kolonnawa	Colombo
202.		6	Wadulla	Kolonnawa	Colombo
203.		4	Wadulla	Kolonnawa	Colombo
204.		4	Wadulla	Kolonnawa	Colombo
205.		10	Wadulla	Kolonnawa	Colombo
206.		6	Wadulla	Kolonnawa	Colombo
207.		7	Wadulla	Kolonnawa	Colombo
208.		7	Wadulla	Kolonnawa	Colombo
209.		6	Wadulla	Kolonnawa	Colombo

210.		6	Wadulla	Kolonnawa	Colombo
211.		4	Wadulla	Kolonnawa	Colombo
212.		8	Wadulla	Kolonnawa	Colombo
213.		4	Wadulla	Kolonnawa	Colombo
214.		10	Wadulla	Kolonnawa	Colombo
215.		10	Wadulla	Kolonnawa	Colombo
216.		4	Wadulla	Kolonnawa	Colombo
217.		4	Wadulla	Kolonnawa	Colombo
218.		10	Wadulla	Kolonnawa	Colombo
219.		6	Wadulla	Kolonnawa	Colombo
220.		2	Wadulla	Kolonnawa	Colombo
221.		2	Wadulla	Kolonnawa	Colombo
222.		7	Wadulla	Kolonnawa	Colombo
223.		6	Wadulla	Kolonnawa	Colombo
224.		6	Wadulla	Kolonnawa	Colombo
225.		4	Wadulla	Kolonnawa	Colombo
226.		7	Wadulla	Kolonnawa	Colombo
227.		7	Wadulla	Kolonnawa	Colombo
228.		4	Wadulla	Kolonnawa	Colombo
229.		4	Wadulla	Kolonnawa	Colombo
230.		4	Wadulla	Kolonnawa	Colombo
231.		7	Wadulla	Kolonnawa	Colombo
232.		4	Wadulla	Kolonnawa	Colombo
233.		4	Wadulla	Kolonnawa	Colombo
234.		8	Wadulla	Kolonnawa	Colombo
235.		6	Wadulla	Kolonnawa	Colombo
236.		3	Wadulla	Kolonnawa	Colombo
237.		2	Wadulla	Kolonnawa	Colombo
238.		8	Wadulla	Kolonnawa	Colombo
239.		6	Wadulla	Kolonnawa	Colombo
240.		6	Wadulla	Kolonnawa	Colombo
<b>Sedawatta</b>					
241.		8	Sedawatta	Kolonnawa	Colombo
242.		7	Sedawatta	Kolonnawa	Colombo
243.		8	Sedawatta	Kolonnawa	Colombo
244.		4	Sedawatta	Kolonnawa	Colombo
245.		4	Sedawatta	Kolonnawa	Colombo
246.		4	Sedawatta	Kolonnawa	Colombo
247.		7	Sedawatta	Kolonnawa	Colombo
248.		10	Sedawatta	Kolonnawa	Colombo

249.		6	Sedawatta	Kolonnawa	Colombo
250.		8	Sedawatta	Kolonnawa	Colombo
251.		6	Sedawatta	Kolonnawa	Colombo
252.		4	Sedawatta	Kolonnawa	Colombo
253.		8	Sedawatta	Kolonnawa	Colombo
254.		8	Sedawatta	Kolonnawa	Colombo
255.		10	Sedawatta	Kolonnawa	Colombo
256.		4	Sedawatta	Kolonnawa	Colombo
257.		2	Sedawatta	Kolonnawa	Colombo
258.		8	Sedawatta	Kolonnawa	Colombo
259.		6	Sedawatta	Kolonnawa	Colombo
260.		3	Sedawatta	Kolonnawa	Colombo
261.		4	Sedawatta	Kolonnawa	Colombo
262.		4	Sedawatta	Kolonnawa	Colombo
263.		4	Sedawatta	Kolonnawa	Colombo
264.		6	Sedawatta	Kolonnawa	Colombo
265.		8	Sedawatta	Kolonnawa	Colombo
266.		10	Sedawatta	Kolonnawa	Colombo
267.		4	Sedawatta	Kolonnawa	Colombo
268.		4	Sedawatta	Kolonnawa	Colombo
269.		6	Sedawatta	Kolonnawa	Colombo
270.		4	Sedawatta	Kolonnawa	Colombo
271.		8	Sedawatta	Kolonnawa	Colombo
272.		6	Sedawatta	Kolonnawa	Colombo
273.		10	Sedawatta	Kolonnawa	Colombo
274.		4	Sedawatta	Kolonnawa	Colombo
275.		8	Sedawatta	Kolonnawa	Colombo
276.		7	Sedawatta	Kolonnawa	Colombo
277.		4	Sedawatta	Kolonnawa	Colombo
278.		8	Sedawatta	Kolonnawa	Colombo
279.		3	Sedawatta	Kolonnawa	Colombo
280.		4	Sedawatta	Kolonnawa	Colombo
281.		4	Sedawatta	Kolonnawa	Colombo
282.		10	Sedawatta	Kolonnawa	Colombo
283.		4	Sedawatta	Kolonnawa	Colombo
284.		10	Sedawatta	Kolonnawa	Colombo
285.		6	Sedawatta	Kolonnawa	Colombo
286.		4	Sedawatta	Kolonnawa	Colombo
287.		6	Sedawatta	Kolonnawa	Colombo
288.		7	Sedawatta	Kolonnawa	Colombo
289.		6	Sedawatta	Kolonnawa	Colombo

290.		8	Sedawatta	Kolonnawa	Colombo
291.		6	Sedawatta	Kolonnawa	Colombo
292.		4	Sedawatta	Kolonnawa	Colombo
293.		10	Sedawatta	Kolonnawa	Colombo
294.		4	Sedawatta	Kolonnawa	Colombo
295.		6	Sedawatta	Kolonnawa	Colombo
296.		3	Sedawatta	Kolonnawa	Colombo
297.		2	Sedawatta	Kolonnawa	Colombo
298.		6	Sedawatta	Kolonnawa	Colombo
299.		2	Sedawatta	Kolonnawa	Colombo
300.		8	Sedawatta	Kolonnawa	Colombo
301.		4	Sedawatta	Kolonnawa	Colombo
302.		6	Sedawatta	Kolonnawa	Colombo
303.		6	Sedawatta	Kolonnawa	Colombo
304.		7	Sedawatta	Kolonnawa	Colombo
305.		8	Sedawatta	Kolonnawa	Colombo
306.		7	Sedawatta	Kolonnawa	Colombo
307.		8	Sedawatta	Kolonnawa	Colombo
308.		10	Sedawatta	Kolonnawa	Colombo
309.		8	Sedawatta	Kolonnawa	Colombo
310.		8	Sedawatta	Kolonnawa	Colombo
311.		4	Sedawatta	Kolonnawa	Colombo
312.		6	Sedawatta	Kolonnawa	Colombo
313.		4	Sedawatta	Kolonnawa	Colombo
314.		4	Sedawatta	Kolonnawa	Colombo
315.		7	Sedawatta	Kolonnawa	Colombo
316.		2	Sedawatta	Kolonnawa	Colombo
317.		6	Sedawatta	Kolonnawa	Colombo
318.		4	Sedawatta	Kolonnawa	Colombo
319.		3	Sedawatta	Kolonnawa	Colombo
320.		11	Sedawatta	Kolonnawa	Colombo
321.		8	Sedawatta	Kolonnawa	Colombo
322.		1	Sedawatta	Kolonnawa	Colombo
323.		6	Sedawatta	Kolonnawa	Colombo
324.		8	Sedawatta	Kolonnawa	Colombo
325.		4	Sedawatta	Kolonnawa	Colombo
326.		8	Sedawatta	Kolonnawa	Colombo
327.		4	Sedawatta	Kolonnawa	Colombo
328.		4	Sedawatta	Kolonnawa	Colombo



329.			10	Sedawatta	Kolonnawa	Colombo
330.			6	Sedawatta	Kolonnawa	Colombo
331.			11	Sedawatta	Kolonnawa	Colombo
332.			7	Sedawatta	Kolonnawa	Colombo
333.			11	Sedawatta	Kolonnawa	Colombo
<b>Bluemendel</b>						
334.			1	Bluemendel	Colombo	Colombo
335.			8	Bluemendel	Colombo	Colombo
336.			6	Bluemendel	Colombo	Colombo
337.			8	Bluemendel	Colombo	Colombo
338.			4	Bluemendel	Colombo	Colombo
339.			8	Bluemendel	Colombo	Colombo
340.			6	Bluemendel	Colombo	Colombo
341.			6	Bluemendel	Colombo	Colombo
342.			6	Bluemendel	Colombo	Colombo
343.			11	Bluemendel	Colombo	Colombo
344.			8	Bluemendel	Colombo	Colombo
345.			4	Bluemendel	Colombo	Colombo
346.			10	Bluemendel	Colombo	Colombo
347.			6	Bluemendel	Colombo	Colombo
348.			3	Bluemendel	Colombo	Colombo
349.			6	Bluemendel	Colombo	Colombo
350.			3	Bluemendel	Colombo	Colombo
351.			6	Bluemendel	Colombo	Colombo
352.			4	Bluemendel	Colombo	Colombo
353.			3	Bluemendel	Colombo	Colombo
354.			4	Bluemendel	Colombo	Colombo
355.			10	Bluemendel	Colombo	Colombo
356.			8	Bluemendel	Colombo	Colombo
357.			5	Bluemendel	Colombo	Colombo
358.			4	Bluemendel	Colombo	Colombo
359.			10	Bluemendel	Colombo	Colombo
360.			4	Bluemendel	Colombo	Colombo
361.			6	Bluemendel	Colombo	Colombo
362.			8	Bluemendel	Colombo	Colombo
363.			6	Bluemendel	Colombo	Colombo
364.			6	Bluemendel	Colombo	Colombo
365.			8	Bluemendel	Colombo	Colombo
366.			4	Bluemendel	Colombo	Colombo
<b>Gangabada</b>						
367.			3	Gangabada East	Kelaniya	Gampaha

368.			6	Gangabada East	Kelaniya	Gampaha
369.			3	Gangabada East	Kelaniya	Gampaha
370.			6	Gangabada East	Kelaniya	Gampaha
371.			7	Gangabada East	Kelaniya	Gampaha
372.			7	Gangabada East	Kelaniya	Gampaha
<b>Orugodawatta</b>						
373.			6	Orugodawatta	Kolonnawa	Colombo
374.			4	Orugodawatta	Kolonnawa	Colombo
375.			6	Orugodawatta	Kolonnawa	Colombo
376.			6	Orugodawatta	Kolonnawa	Colombo
377.			4	Orugodawatta	Kolonnawa	Colombo
378.			6	Orugodawatta	Kolonnawa	Colombo
379.			4	Orugodawatta	Kolonnawa	Colombo
380.			6	Orugodawatta	Kolonnawa	Colombo
381.			4	Orugodawatta	Kolonnawa	Colombo
<b>Nawagampura</b>						
382.			11	Nawagampura	Colombo	Colombo
383.			1	Nawagampura	Colombo	Colombo
384.			11	Nawagampura	Colombo	Colombo
385.			3	Nawagampura	Colombo	Colombo
386.			6	Nawagampura	Colombo	Colombo
387.			10	Nawagampura	Colombo	Colombo
388.			7	Nawagampura	Colombo	Colombo
389.			10	Nawagampura	Colombo	Colombo
390.			6	Nawagampura	Colombo	Colombo
391.			7	Nawagampura	Colombo	Colombo
392.			1	Nawagampura	Colombo	Colombo
393.			6	Nawagampura	Colombo	Colombo
394.			8	Nawagampura	Colombo	Colombo
395.			7	Nawagampura	Colombo	Colombo

## The list of affected Business Owners

	Serial No	Name	Employment	GN	DS	District
<b>Wadullawatta</b>						
1.			12	Wadulla	Kolonnawa	Colombo
2.			12	Wadulla	Kolonnawa	Colombo
3.			6	Wadulla	Kolonnawa	Colombo
4.			12	Wadulla	Kolonnawa	Colombo
5.			12	Wadulla	Kolonnawa	Colombo
6.			12	Wadulla	Kolonnawa	Colombo
7.			12	Wadulla	Kolonnawa	Colombo
8.			1	Wadulla	Kolonnawa	Colombo
9.			12	Wadulla	Kolonnawa	Colombo
10.			6	Wadulla	Kolonnawa	Colombo
11.			12	Wadulla	Kolonnawa	Colombo
12.			7	Wadulla	Kolonnawa	Colombo
<b>Sedawatta</b>						
13.			12	Sedawatta	Kolonnawa	Colombo
14.			12	Sedawatta	Kolonnawa	Colombo
15.			12	Sedawatta	Kolonnawa	Colombo
16.			12	Sedawatta	Kolonnawa	Colombo
17.			12	Sedawatta	Kolonnawa	Colombo
18.			12	Sedawatta	Kolonnawa	Colombo
19.			12	Sedawatta	Kolonnawa	Colombo



20.			12	Sedawatta	Kolonnawa	Colombo
21.			12	Sedawatta	Kolonnawa	Colombo
22.						Colombo
			12	Sedawatta	Kolonnawa	
23.			12	Sedawatta	Kolonnawa	Colombo
24.						Colombo
			12	Sedawatta	Kolonnawa	
25.			12	Sedawatta	Kolonnawa	Colombo
26.			12	Sedawatta	Kolonnawa	Colombo
<b>Nawagampura</b>						
27.			12	Nawagampura	Colombo	Colombo
28.			12	Nawagampura	Colombo	Colombo
29.			12	Nawagampura	Colombo	Colombo
30.						Colombo
			12	Nawagampura	Colombo	
31.			12	Nawagampura	Colombo	Colombo
32.			12	Nawagampura	Colombo	Colombo
33.			12	Nawagampura	Colombo	Colombo
34.			12	Nawagampura	Colombo	Colombo
35.			12	Nawagampura	Colombo	Colombo
36.			12	Nawagampura	Colombo	Colombo
37.			12	Nawagampura	Colombo	Colombo
38.			12	Nawagampura	Colombo	Colombo
<b>Grandpass</b>						
39.				Granpass	Colombo	Colombo
			12			
40.			12	Granpass	Colombo	Colombo
41.			12	Granpass	Colombo	Colombo
42.			6	Granpass	Colombo	Colombo
43.			12	Granpass	Colombo	Colombo

<b>Bluemandhal</b>						
44.			12			Colombo
				Bluemendel	Colombo	
45.			12			Colombo
				Bluemendel	Colombo	
46.			12			Colombo
				Bluemendel	Colombo	
47.			12			Colombo
				Bluemendel	Colombo	
48.			12			Colombo
				Bluemendel	Colombo	
49.			12			Colombo
				Bluemendel	Colombo	
50.			12			Colombo
				Bluemendel	Colombo	
51.			12			Colombo
				Bluemendel	Colombo	
52.			12			Colombo
				Bluemendel	Colombo	
53.			12			Colombo
				Bluemendel	Colombo	
54.			12			Colombo
				Bluemendel	Colombo	

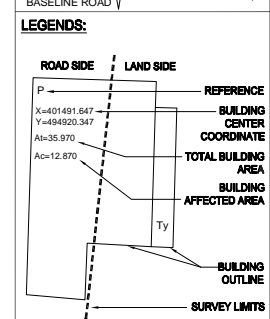
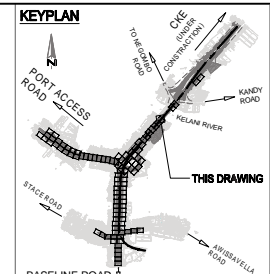
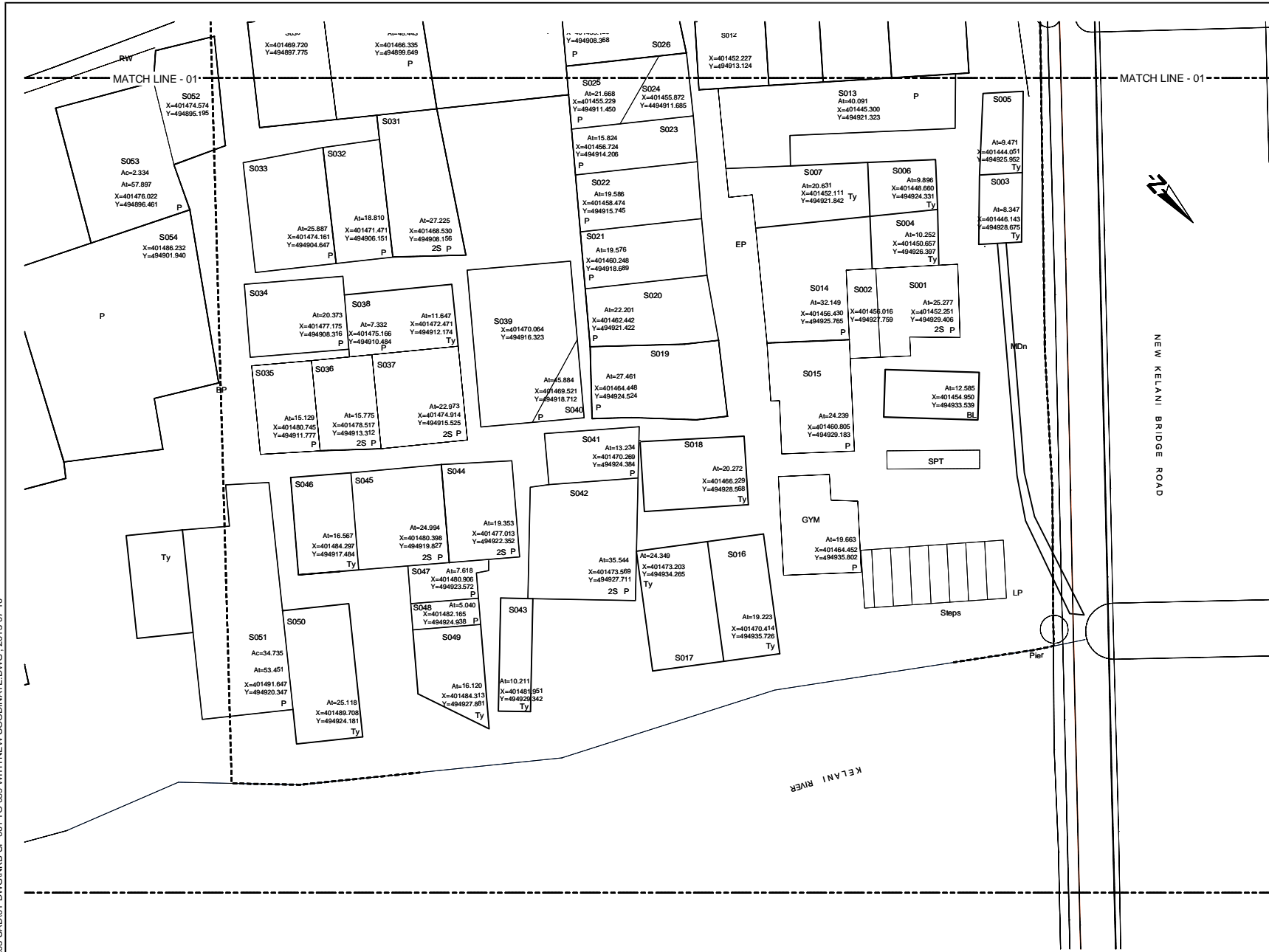


J:\06-NKB PROJECT\03-CAD\01-DWG\NKB-SP-001 TO 089 WITH NEW COORDINATE.DWG - 2013-07-10

Original Drawing Size A3

 <p><b>DEMOCRATIC SOCIALIST REPUBLIC OF SRI LANKA</b> MINISTRY OF PORTS AND HIGHWAYS</p> <p><b>Road Development Authority</b></p>	 <p>Oriental Consultants Co., Ltd.</p>  <p>Consulting Engineers &amp; Architects Associated (Pvt) Ltd.</p>	<table border="1" style="width: 100%; border-collapse: collapse;"> <tr> <td style="width: 10%;"></td> <td style="width: 10%;"></td> <td style="width: 80%;"></td> </tr> <tr> <td>NO</td> <td>DATE</td> <td>DESCRIPTION</td> </tr> <tr> <td> </td> <td> </td> <td> </td> </tr> </table>				NO	DATE	DESCRIPTION				<p><b>PREPARATORY SURVEY ON TRAFFIC IMPROVEMENT PROJECT AROUND NEW KELANI BRIDGE</b></p>	<p><b>TRAFFIC IMPROVEMENT PROJECT AROUND 2nd NEW KELANI BRIDGE</b></p> <p>DRG. NO: <b>NKB-SP-001</b></p>
NO	DATE	DESCRIPTION											

U:\06-NKB PROJECT\03-CADD\01-DWG\NKB-SP-001 TO 099 WITH NEW COORDINATE.DWG\_2013-07-10



- REFERENCE**
- EP --- Electric Post
  - EPHT --- High Tension Electric Post
  - TP --- Telephone Post
  - CP --- Concrete Post
  - LP --- Lamp Post
  - NB --- Name Board
  - SB --- Sign Board
  - ROADS --- RDL (Boundary Stone)
  - TSP --- Traffic Signal Post
  - GS --- Guard Stone
  - GW --- Guard Wall
  - TRE --- Transformer
  - PB --- Pylon Base
  - FH --- Fire Hydrant
  - GB --- Gantry Base
  - BL --- Building Lavatory
  - BS --- Bus Shelter
  - CB --- Concrete Base
  - P --- Permanent Building
  - Ty --- Temporary Building
  - BLC --- Building Under Construction
  - FDN --- Foundation
  - V --- Valve
  - WW --- Water Valve
  - GWMT --- Over Head Water Tank
  - WT --- Water Tank
  - GL --- Gully
  - MH --- Manhole
  - MHT --- Manhole Telecom
  - MHW --- Manhole Water
  - MHS --- Manhole Sewer
  - TCB --- Telecom Cable Box
  - ECB --- Electric Cable Box
  - SPT --- Septic Tank
  - G --- Gate
  - GP --- Gate Post
  - CUL --- Culvert
  - MCh --- Masonry Drain
  - EDn --- Earth Drain
  - BB --- Bank Bottom
  - TB --- Bank Top
  - GBW --- Gabion Wall
  - EF --- Electric Fence
  - ECL --- Electric Cable Line Under Ground
  - ORL --- Oil Pipe Line
  - DF --- Dry Fence
  - IF --- Iron Fence
  - LF --- Live Fence
  - RW --- Retaining Wall
  - K --- Kerb
  - SF --- Stone Fence
  - W --- Wall
  - WF --- Wire Fence
  - WDF --- Wooden Fence
  - WLF --- Wire Live Fence
  - WMP --- Wire Mesh Fence
  - ZF --- Zinc Fence

0 2 4m  
SCALE 1:200

Original Drawing Size A3

DEMOCRATIC SOCIALIST REPUBLIC OF SRI LANKA  
MINISTRY OF PORTS AND HIGHWAYS

**Road Development Authority**

Oriental Consultants Co., Ltd.

Consulting Engineers & Architects Associated (Pvt) Ltd.

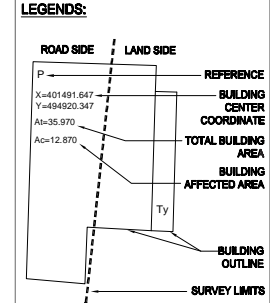
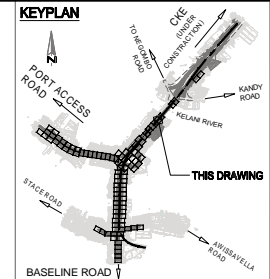
NO	DATE	DESCRIPTION

**PREPARATORY SURVEY ON TRAFFIC IMPROVEMENT PROJECT AROUND NEW KELANI BRIDGE**

**TRAFFIC IMPROVEMENT PROJECT AROUND 2nd NEW KELANI BRIDGE**

DRG. NO: NKB-SP-002

U:\06-NKB PROJECT\03-CADD\01-DWG\NKB-SP-001 TO 099 WITH NEW COORDINATE.DWG\_2013-07-10



- REFERENCE**
- EP --- Electric Post
  - EPHT --- High Tension Electric Post
  - TP --- Telephone Post
  - CP --- Concrete Post
  - LP --- Lamp Post
  - NB --- Name Board
  - SB --- Sign Board
  - ROADS --- RDA (Boundary Stone)
  - TSP --- Traffic Signal Post
  - GS --- Guard Stone
  - GW --- Guard Wall
  - TRE --- Transformer
  - PB --- Pylon Base
  - FH --- Fire Hydrant
  - GB --- Gantry Base
  - BL --- Building Laboratory
  - BS --- Bus Shelter
  - CB --- Concrete Base
  - P --- Permanent Building
  - Ty --- Temporary Building
  - BUC --- Building Under Construction
  - FDN --- Foundation
  - V --- Valve
  - WV --- Water Valve
  - QWMT --- Over Head Water Tank
  - WT --- Water Tank
  - GL --- Gully
  - MH --- Manhole
  - MHT --- Manhole Telecom
  - MHW --- Manhole Water
  - MHS --- Manhole Sewer
  - TCB --- Telecom Cable Box
  - ECB --- Electric Cable Box
  - SPT --- Septic Tank
  - G --- Gate
  - GP --- Gate Post
  - CUL --- Culvert
  - MCh --- Masonry Drain
  - EDn --- Earth Drain
  - BB --- Bank Bottom
  - TB --- Bank Top
  - GBW --- Gabion Wall
  - EF --- Electric Fence
  - ECL --- Electric Cable Line Under Ground
  - ORL --- Oil Pipe Line
  - DF --- Dry Fence
  - IF --- Iron Fence
  - LF --- Live Fence
  - RW --- Retaining Wall
  - K --- Kerb
  - SF --- Stone Fence
  - W --- Wall
  - WF --- Wire Fence
  - WOF --- Wooden Fence
  - WLF --- Wire Live Fence
  - WMP --- Wire Mesh Fence
  - ZF --- Zinc Fence

Original Drawing Size A3

DEMOCRATIC SOCIALIST REPUBLIC OF SRI LANKA  
MINISTRY OF PORTS AND HIGHWAYS

**Road Development Authority**

Oriental Consultants Co., Ltd.

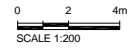
Consulting Engineers & Architects Associated (Pvt) Ltd.

NO	DATE	DESCRIPTION

**PREPARATORY SURVEY ON TRAFFIC  
IMPROVEMENT PROJECT AROUND NEW KELANI  
BRIDGE**

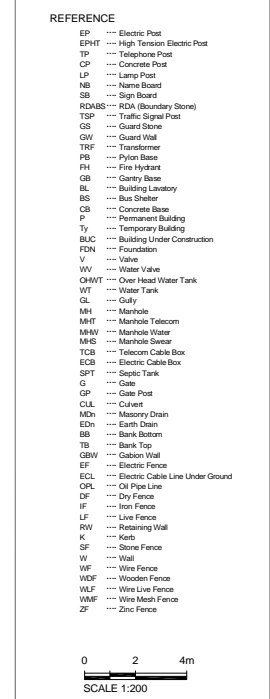
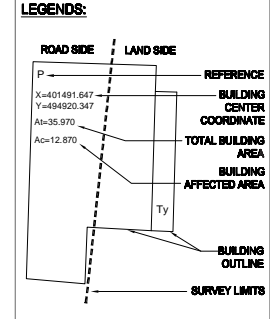
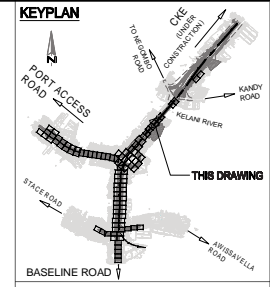
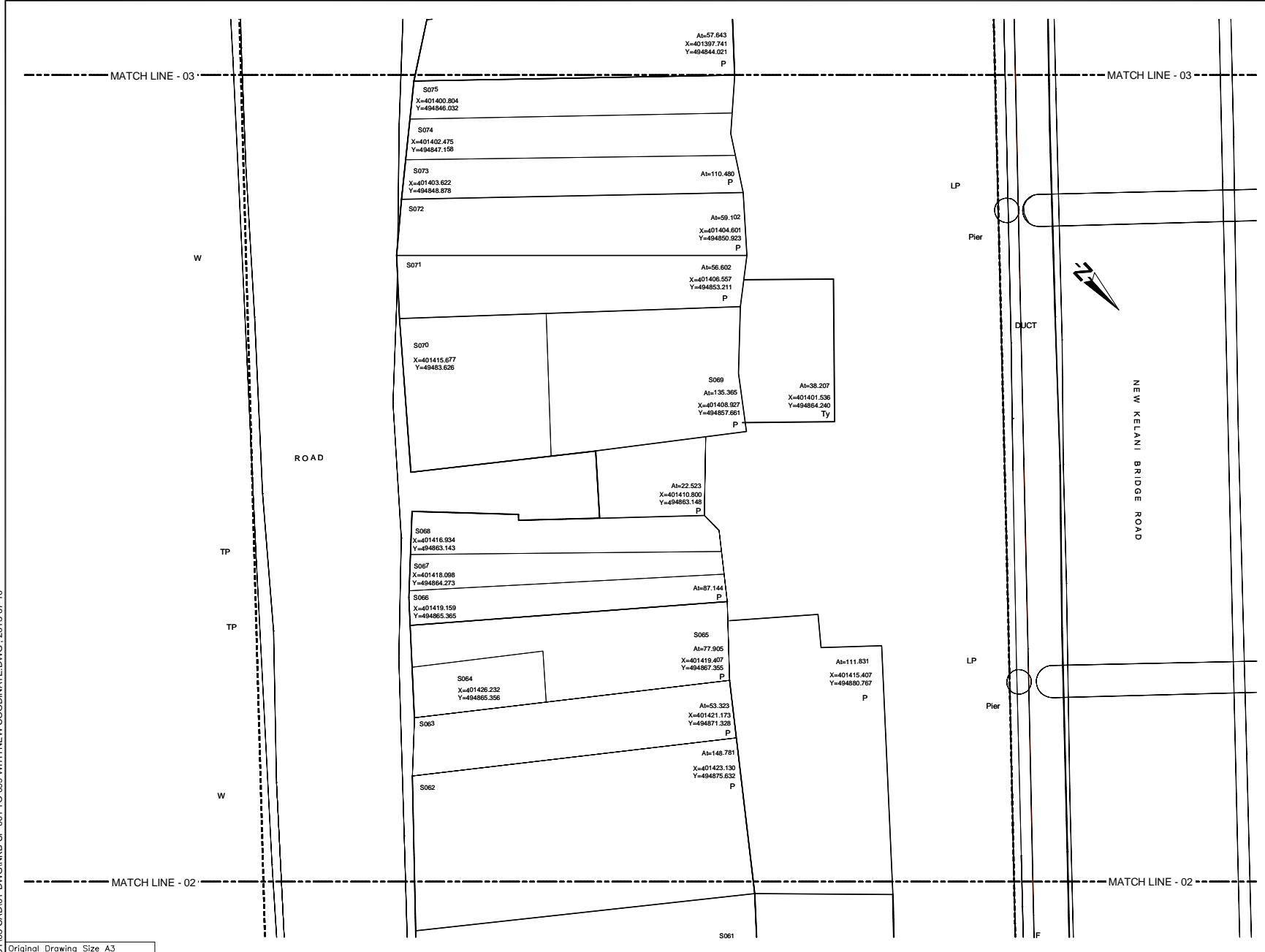
**TRAFFIC IMPROVEMENT PROJECT  
AROUND 2nd NEW KELANI BRIDGE**

DRG. NO: NKB-SP-003





U:\06-NKB PROJECT\03-CAD\01-DWG\NKB-SP-001 TO 099 WITH NEW COORDINATE.DWG., 2013-07-10



Original Drawing Size A3

DEMOCRATIC SOCIALIST REPUBLIC OF SRI LANKA  
MINISTRY OF PORTS AND HIGHWAYS

**Road Development Authority**

ORICONSLU Oriental Consultants Co., Ltd.

CEA Consulting Engineers & Architects Associated (Pvt) Ltd.

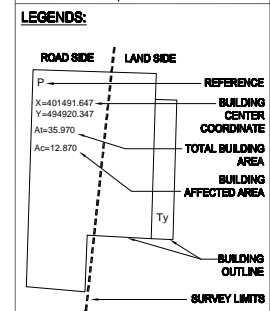
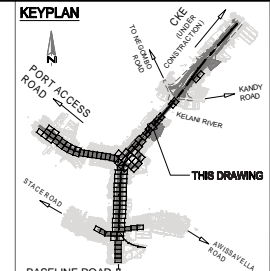
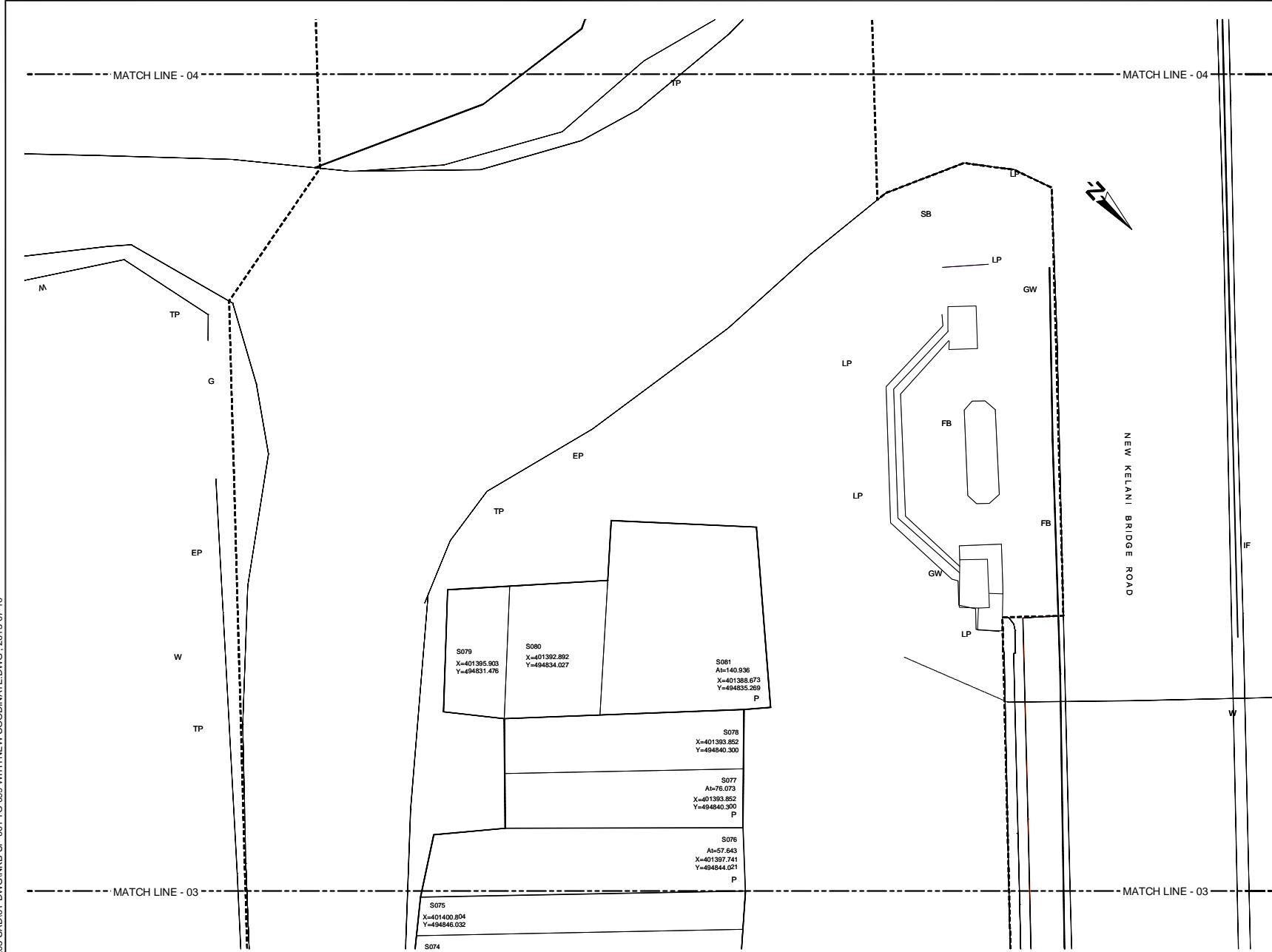
NO	DATE	DESCRIPTION

PREPARATORY SURVEY ON TRAFFIC IMPROVEMENT PROJECT AROUND NEW KELANI BRIDGE

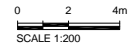
TRAFFIC IMPROVEMENT PROJECT AROUND 2nd NEW KELANI BRIDGE

DRG. NO: NKB-SP-004

U:\06-NKB PROJECT\03-CAD\01-DWG\NKB-SP-001 TO 099 WITH NEW COORDINATE.DWG, 2013-07-10



- REFERENCE**
- EP --- Electric Post
  - EPHT --- High Tension Electric Post
  - TP --- Telephone Post
  - CP --- Concrete Post
  - LP --- Lamp Post
  - NB --- Name Board
  - SB --- Sign Board
  - ROADS --- RDA (Boundary Stone)
  - TSP --- Traffic Signal Post
  - GS --- Guard Stone
  - GW --- Guard Wall
  - TRF --- Transformer
  - PB --- Pylon Base
  - FH --- Fire Hydrant
  - GB --- Gantry Base
  - BL --- Building Lavatory
  - BS --- Bus Shelter
  - CB --- Concrete Base
  - P --- Permanent Building
  - Ty --- Temporary Building
  - BUC --- Building Under Construction
  - FDN --- Foundation
  - V --- Valve
  - WV --- Water Valve
  - GWMT --- Over Head Water Tank
  - WT --- Water Tank
  - GL --- Gully
  - MH --- Manhole
  - MHT --- Manhole Telecom
  - MHW --- Manhole Water
  - MHS --- Manhole Sewer
  - TCB --- Telecom Cable Box
  - ECB --- Electric Cable Box
  - SPT --- Septic Tank
  - G --- Gate
  - GP --- Gate Post
  - C/L --- Culvert
  - MCh --- Masonry Drain
  - EDn --- Earth Drain
  - BB --- Bank Bottom
  - TB --- Bank Top
  - GBW --- Gabion Wall
  - EF --- Electric Fence
  - ECL --- Electric Cable Line Under Ground
  - ORL --- Oil Pipe Line
  - DF --- Dry Fence
  - IF --- Iron Fence
  - LF --- Live Fence
  - RW --- Retaining Wall
  - K --- Kerb
  - SF --- Stone Fence
  - W --- Wall
  - WF --- Wire Fence
  - WDF --- Wooden Fence
  - WLF --- Wire Live Fence
  - WMP --- Wire Mesh Fence
  - ZF --- Zinc Fence



Original Drawing Size A3

DEMOCRATIC SOCIALIST REPUBLIC OF SRI LANKA  
MINISTRY OF PORTS AND HIGHWAYS

**Road Development Authority**

Oriental Consultants Co., Ltd.

Consulting Engineers & Architects Associated (Pvt) Ltd.

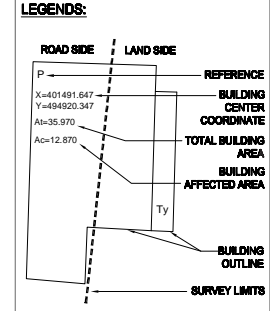
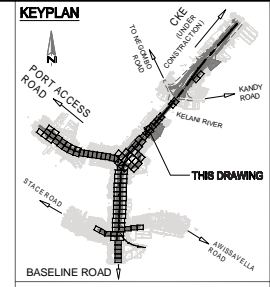
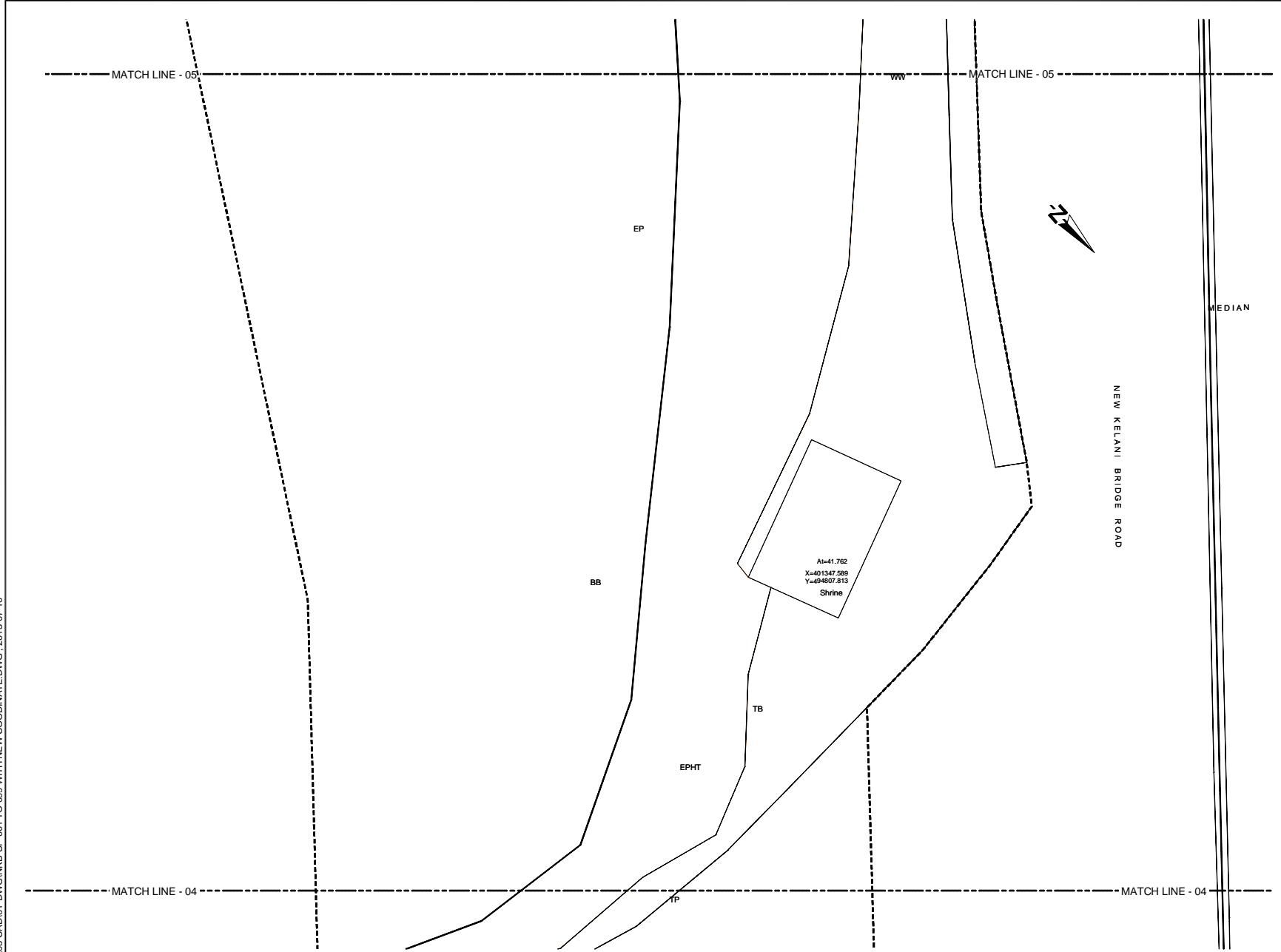
NO	DATE	DESCRIPTION

PREPARATORY SURVEY ON TRAFFIC IMPROVEMENT PROJECT AROUND NEW KELANI BRIDGE

TRAFFIC IMPROVEMENT PROJECT AROUND 2nd NEW KELANI BRIDGE

DRG. NO: **NKB-SP-005**

U:\06-NKB PROJECT\03-CAD\01-DWG\NKB-SP-001 TO 099 WITH NEW COORDINATE.DWG\_2013-07-10



- REFERENCE**
- EP --- Electric Post
  - EPHT --- High Tension Electric Post
  - TP --- Telephone Post
  - CP --- Concrete Post
  - LP --- Lamp Post
  - NB --- Name Board
  - SB --- Sign Board
  - RDMS --- RDA (Boundary Stone)
  - TSP --- Traffic Signal Post
  - GS --- Guard Stone
  - GW --- Guard Wall
  - TRE --- Transformer
  - PB --- Pylon Base
  - FH --- Fire Hydrant
  - GB --- Gantry Base
  - BL --- Building Lavatory
  - BS --- Bus Shelter
  - CB --- Concrete Base
  - P --- Permanent Building
  - Ty --- Temporary Building
  - BUC --- Building Under Construction
  - FDN --- Foundation
  - V --- Valve
  - WV --- Water Valve
  - GHWT --- Over Head Water Tank
  - WT --- Water Tank
  - GL --- Gully
  - MH --- Manhole
  - MHT --- Manhole Telecom
  - MHW --- Manhole Water
  - MHS --- Manhole Sewer
  - TCB --- Telecom Cable Box
  - ECB --- Electric Cable Box
  - SPT --- Septic Tank
  - G --- Gate
  - GP --- Gate Post
  - CUL --- Culvert
  - MCh --- Masonry Drain
  - EDn --- Earth Drain
  - BB --- Bank Bottom
  - TB --- Bank Top
  - GBW --- Gabion Wall
  - EF --- Electric Fence
  - ECL --- Electric Cable Line Under Ground
  - ORL --- Oil Pipe Line
  - DF --- Dry Fence
  - IF --- Iron Fence
  - LF --- Live Fence
  - RW --- Retaining Wall
  - K --- Kerb
  - SF --- Stone Fence
  - W --- Wall
  - WF --- Wire Fence
  - WDF --- Wooden Fence
  - WLF --- Wire Live Fence
  - WMP --- Wire Mesh Fence
  - ZF --- Zinc Fence
- 0 2 4m  
SCALE 1:200

Original Drawing Size A3

DEMOCRATIC SOCIALIST REPUBLIC OF SRI LANKA  
MINISTRY OF PORTS AND HIGHWAYS

**Road Development Authority**

ORIONCONSUL Oriental Consultants Co., Ltd.

CEA Consulting Engineers & Architects Associated (Pvt) Ltd.

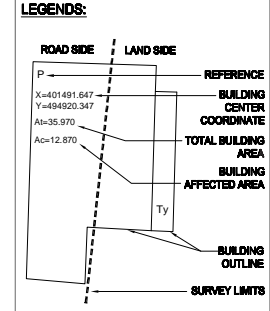
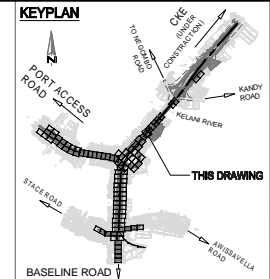
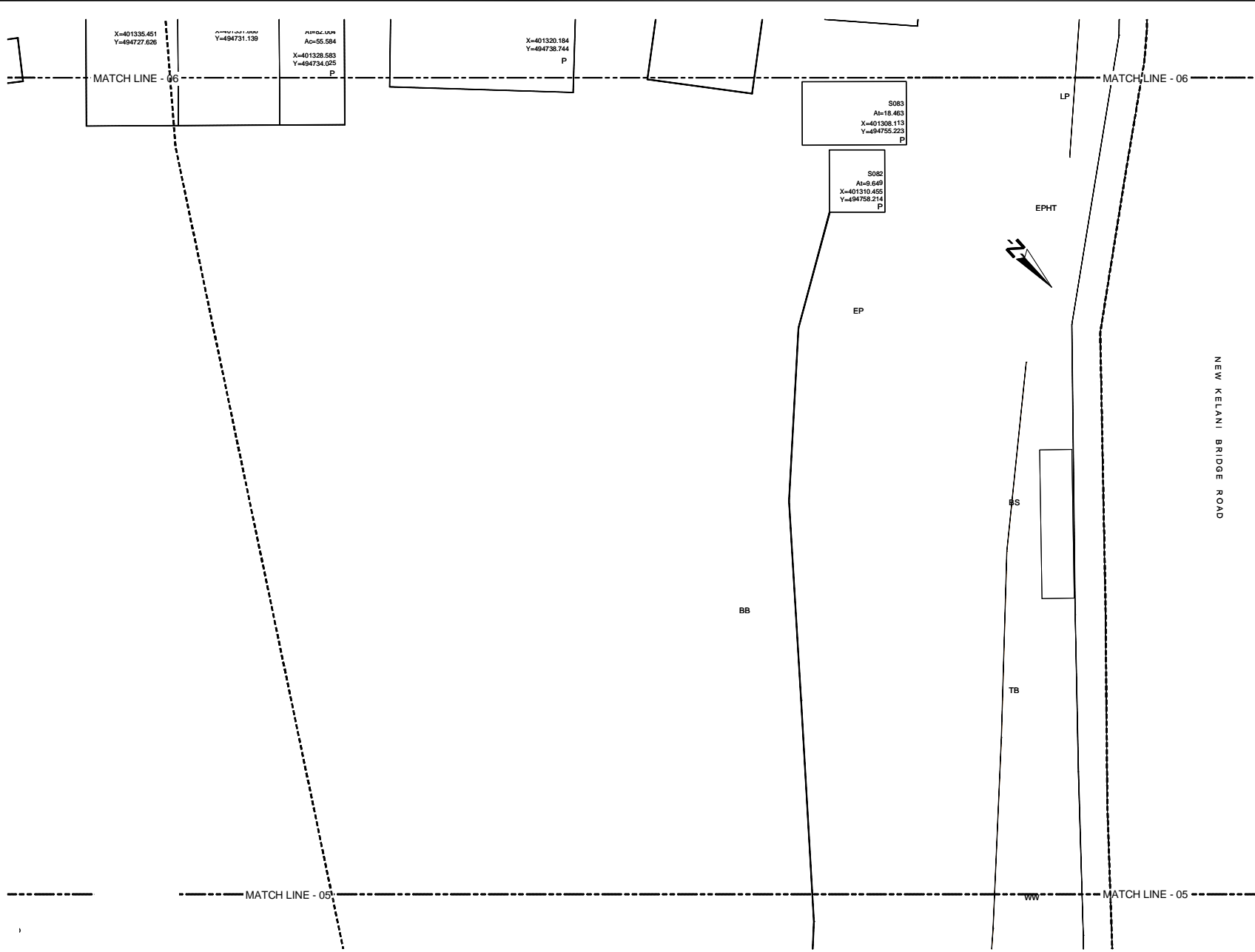
NO	DATE	DESCRIPTION

PREPARATORY SURVEY ON TRAFFIC IMPROVEMENT PROJECT AROUND NEW KELANI BRIDGE

TRAFFIC IMPROVEMENT PROJECT AROUND 2nd NEW KELANI BRIDGE

DRG. NO: **NKB-SP-006**

U:\06-NKB PROJECT\03-CAD\01-DWG\NKB-SP-001 TO 099 WITH NEW COORDINATE.DWG - 2013-07-10



- REFERENCE**
- EP --- Electric Post
  - EPHT --- High Tension Electric Post
  - TP --- Telephone Post
  - CP --- Concrete Post
  - LP --- Lamp Post
  - NB --- Name Board
  - SB --- Sign Board
  - RDBS --- RDA (Boundary Stone)
  - TSP --- Traffic Signal Post
  - GS --- Guard Stone
  - GW --- Guard Wall
  - TRE --- Transformer
  - PB --- Pylon Base
  - FH --- Fire Hydrant
  - GB --- Gantry Base
  - BL --- Building Lavatory
  - BS --- Bus Shelter
  - CB --- Concrete Base
  - P --- Permanent Building
  - Ty --- Temporary Building
  - BUC --- Building Under Construction
  - FDN --- Foundation
  - V --- Valve
  - WV --- Water Valve
  - QWMT --- Over Head Water Tank
  - WT --- Water Tank
  - GL --- Gully
  - MH --- Manhole
  - MHT --- Manhole Telecom
  - MHW --- Manhole Water
  - MHS --- Manhole Sewer
  - TCB --- Telecom Cable Box
  - ECB --- Electric Cable Box
  - SPT --- Septic Tank
  - G --- Gate
  - GP --- Gate Post
  - C&L --- Culvert
  - MCh --- Masonry Drain
  - EDn --- Earth Drain
  - BB --- Bank Bottom
  - TB --- Bank Top
  - GBW --- Gabion Wall
  - EF --- Electric Fence
  - ECL --- Electric Cable Line Under Ground
  - ORL --- Oil Pipe Line
  - DF --- Dry Fence
  - IF --- Iron Fence
  - LF --- Live Fence
  - RW --- Retaining Wall
  - K --- Kerb
  - SF --- Stone Fence
  - W --- Wall
  - WF --- Wire Fence
  - WDF --- Wooden Fence
  - WLF --- Wire Live Fence
  - WMP --- Wire Mesh Fence
  - ZF --- Zinc Fence
- 0 2 4m  
SCALE 1:200

Original Drawing Size A3

DEMOCRATIC SOCIALIST REPUBLIC OF SRI LANKA  
MINISTRY OF PORTS AND HIGHWAYS

**Road Development Authority**

Oriental Consultants Co., Ltd.

Consulting Engineers & Architects Associated (Pvt) Ltd.

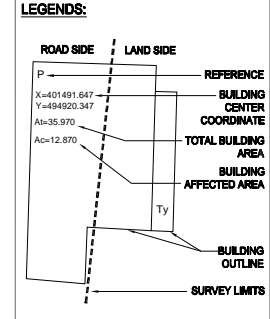
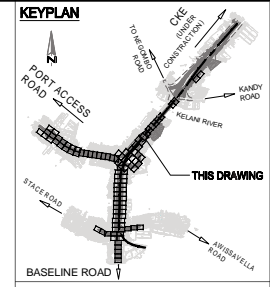
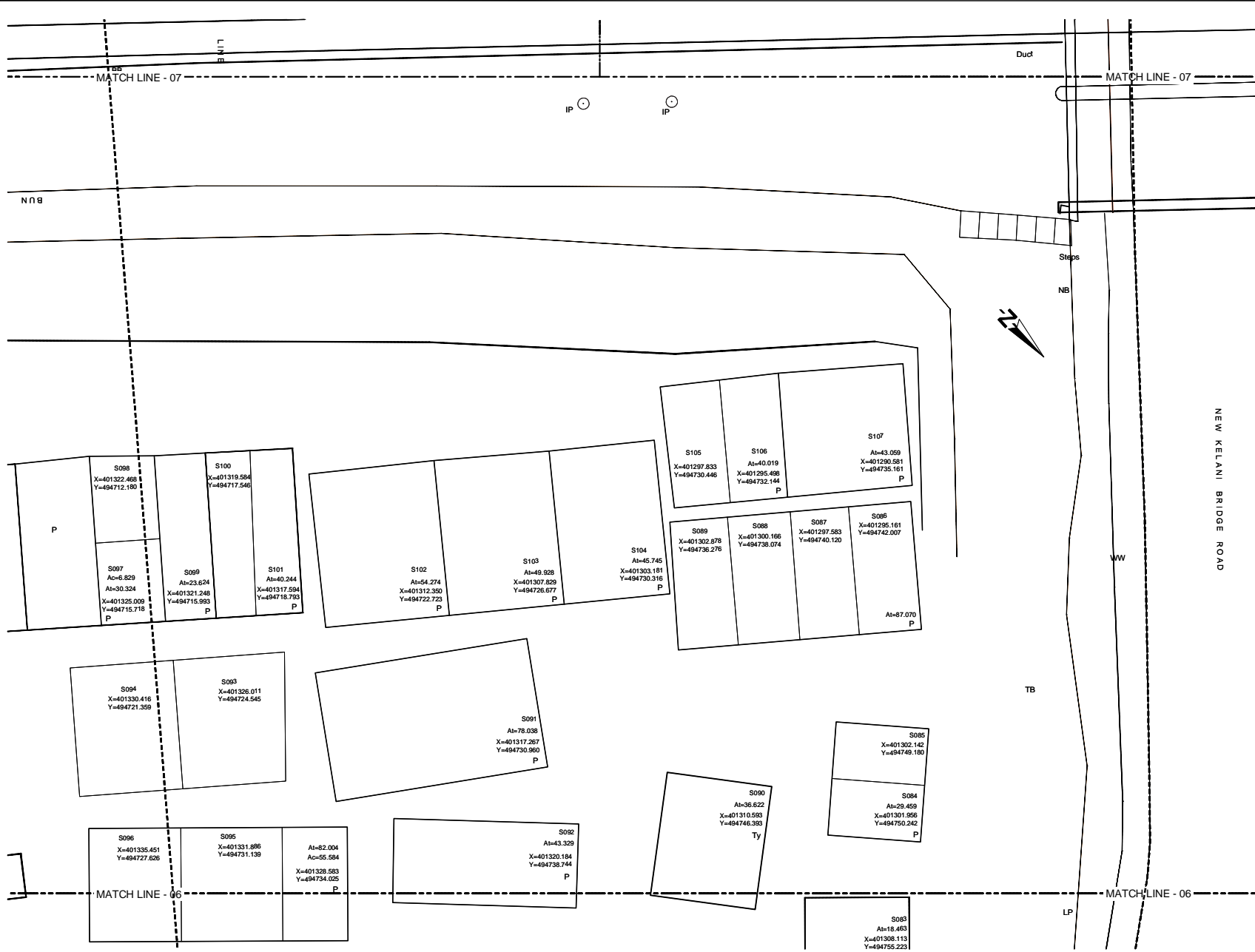
NO	DATE	DESCRIPTION

PREPARATORY SURVEY ON TRAFFIC  
IMPROVEMENT PROJECT AROUND NEW KELANI  
BRIDGE

TRAFFIC IMPROVEMENT PROJECT  
AROUND 2nd NEW KELANI BRIDGE

DRG. NO : **NKB-SP-007**

U:\06-NKB PROJECT\03-CADD\01-DWG\NKB-SP-001 TO 099 WITH NEW COORDINATE.DWG - 2013-07-10



REFERENCE

EP	Electric Post
EPHT	High Tension Electric Post
TP	Telephone Post
CP	Concrete Post
LP	Lamp Post
NB	Name Board
SB	Sign Board
ROADS	RD (Boundary Stone)
TSP	Traffic Signal Post
GS	Guard Stone
GW	Guard Wall
TRF	Transformer
PB	Pylon Base
FH	Fire Hydrant
GB	Gantry Base
BL	Building Lavatory
BS	Bus Shelter
CB	Concrete Base
P	Permanent Building
Ty	Temporary Building
BUC	Building Under Construction
FDN	Foundation
V	Valve
WV	Water Valve
GWMT	Over Head Water Tank
WT	Water Tank
GL	Gully
MH	Manhole
MHT	Manhole Telecom
MHW	Manhole Water
MHS	Manhole Sewer
TCB	Telecom Cable Box
ECB	Electric Cable Box
SPT	Septic Tank
G	Gate
GP	Gate Post
CUL	Culvert
MCh	Masonry Drain
EDn	Earth Drain
BB	Bank Bottom
TB	Bank Top
GBW	Gabion Wall
EF	Electric Fence
ECL	Electric Cable Line Under Ground
ORL	Oil Pipe Line
DF	Dry Fence
IF	Iron Fence
LF	Live Fence
RW	Retaining Wall
K	Keel
SF	Stone Fence
W	Wall
WF	Wire Fence
WDF	Wooden Fence
WLF	Wire Live Fence
WMP	Wire Mesh Fence
ZF	Zinc Fence

0 2 4m  
SCALE 1:200

Original Drawing Size A3

DEMOCRATIC SOCIALIST REPUBLIC OF SRI LANKA  
MINISTRY OF PORTS AND HIGHWAYS

**Road Development Authority**

Oriental Consultants Co., Ltd.

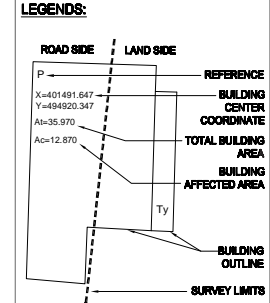
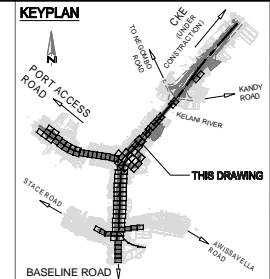
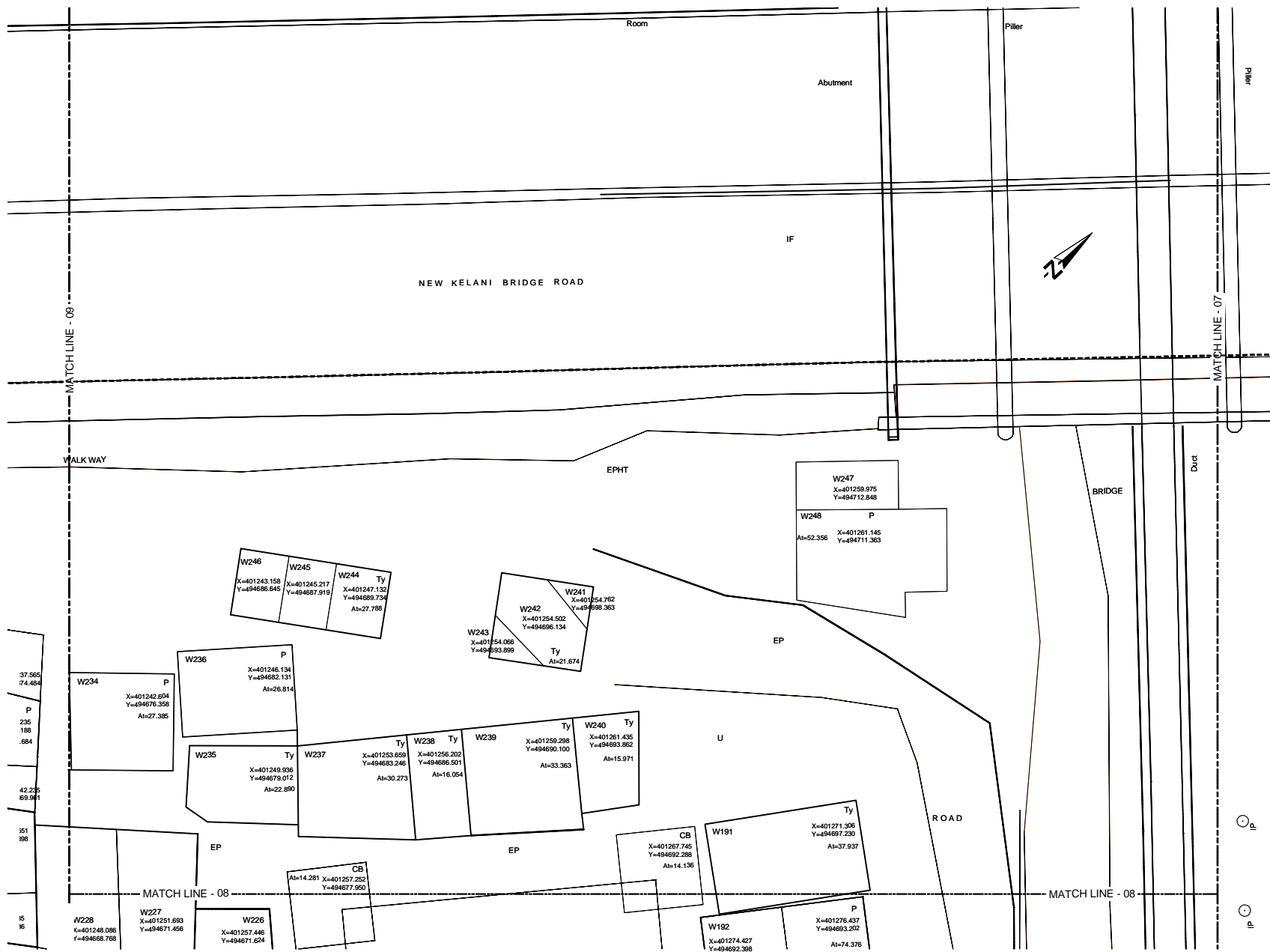
Consulting Engineers & Architects Associated (Pvt) Ltd.

NO	DATE	DESCRIPTION

PREPARATORY SURVEY ON TRAFFIC IMPROVEMENT PROJECT AROUND NEW KELANI BRIDGE

TRAFFIC IMPROVEMENT PROJECT AROUND 2nd NEW KELANI BRIDGE  
DRG. NO: NKB-SP-008

U:\06-NKB PROJECT\03-CADD\01-DWG\NKB-SP-001 TO 099 WITH NEW COORDINATE.DWG, 2013-07-10



- REFERENCE**
- EP --- Electric Post
  - EPHT --- High Tension Electric Post
  - TP --- Telephone Post
  - CP --- Concrete Post
  - LP --- Lamp Post
  - NB --- Name Board
  - SB --- Sign Board
  - ROADS --- RDA (Boundary Stone)
  - TSP --- Traffic Signal Post
  - GS --- Guard Stone
  - GW --- Guard Wall
  - TRE --- Transformer
  - PB --- Pylon Base
  - FH --- Fire Hydrant
  - GB --- Gantry Base
  - BL --- Building Lavatory
  - BS --- Bus Shelter
  - CB --- Concrete Base
  - P --- Permanent Building
  - Ty --- Temporary Building
  - BUC --- Building Under Construction
  - FDN --- Foundation
  - V --- Valve
  - WW --- Water Valve
  - GHWT --- Over Head Water Tank
  - WT --- Water Tank
  - GL --- Gully
  - MH --- Manhole
  - MHT --- Manhole Telecom
  - MHW --- Manhole Water
  - MHS --- Manhole Sewer
  - TCB --- Telecom Cable Box
  - ECB --- Electric Cable Box
  - SPT --- Septic Tank
  - G --- Gate
  - GP --- Gate Post
  - CUL --- Culvert
  - MCh --- Masonry Drain
  - EDn --- Earth Drain
  - BB --- Bank Bottom
  - TB --- Bank Top
  - GBW --- Gabion Wall
  - EF --- Electric Fence
  - ECL --- Electric Cable Line Under Ground
  - ORL --- Oil Pipe Line
  - DF --- Dry Fence
  - IF --- Iron Fence
  - LF --- Live Fence
  - RW --- Retaining Wall
  - K --- Kerb
  - SF --- Stone Fence
  - W --- Wall
  - WF --- Wire Fence
  - WDF --- Wooden Fence
  - WLF --- Wire Live Fence
  - WMP --- Wire Mesh Fence
  - ZF --- Zinc Fence
- 0 2 4m  
SCALE 1:200

Original Drawing Size A3

DEMOCRATIC SOCIALIST REPUBLIC OF SRI LANKA  
MINISTRY OF PORTS AND HIGHWAYS

**Road Development Authority**

Oriental Consultants Co., Ltd.

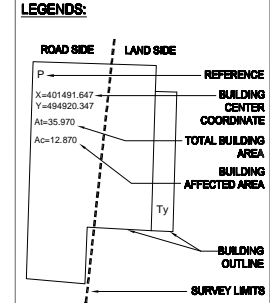
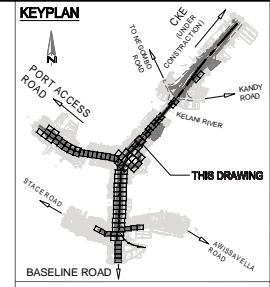
Consulting Engineers & Architects Associated (Pvt) Ltd.

NO	DATE	DESCRIPTION

PREPARATORY SURVEY ON TRAFFIC IMPROVEMENT PROJECT AROUND NEW KELANI BRIDGE

TRAFFIC IMPROVEMENT PROJECT AROUND 2nd NEW KELANI BRIDGE  
DRG. NO: NKB-SP-009

U:\05-NKB PROJECT\03-CAD\01-DWG\NKB-SP-001 TO 099 WITH NEW COORDINATE.DWG., 2013-07-10



REFERENCE

EP	Electric Post
EPHT	High Tension Electric Post
TP	Telephone Post
CP	Concrete Post
LP	Lamp Post
NB	Name Board
SB	Sign Board
ROADS	RDA (Boundary Stone)
TSP	Traffic Signal Post
GS	Guard Stone
GW	Guard Wall
TRE	Transformer
PB	Pylon Base
FH	Fire Hydrant
GB	Gantry Base
BL	Building Lavatory
BS	Bus Shelter
CB	Concrete Base
P	Permanent Building
Ty	Temporary Building
BUC	Building Under Construction
FDN	Foundation
V	Valve
WV	Water Valve
GWWT	Over Head Water Tank
WT	Water Tank
GL	Gully
MH	Manhole
MHT	Manhole Telecom
MHW	Manhole Water
MHS	Manhole Sewer
TCB	Telecom Cable Box
ECB	Electric Cable Box
SPT	Septic Tank
G	Gate
GP	Gate Post
CUL	Culvert
MdN	Masonry Drain
EDn	Earth Drain
BB	Bank Bottom
TB	Bank Top
GBW	Gabion Wall
EF	Electric Fence
ECL	Electric Cable Line Under Ground
OPL	Oil Pipe Line
DF	Dry Fence
IF	Iron Fence
LF	Live Fence
RW	Retaining Wall
K	Keel
SF	Stone Fence
W	Wall
WF	Wire Fence
WDF	Wooden Fence
WLF	Wire Live Fence
WMP	Wire Mesh Fence
ZF	Zinc Fence

0 2 4m  
SCALE 1:200

Original Drawing Size A3

DEMOCRATIC SOCIALIST REPUBLIC OF SRI LANKA  
MINISTRY OF PORTS AND HIGHWAYS

**Road Development Authority**

Oriental Consultants Co., Ltd.

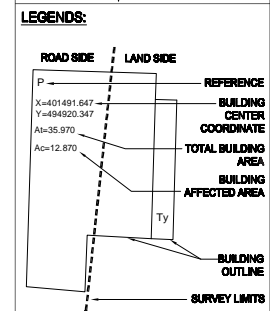
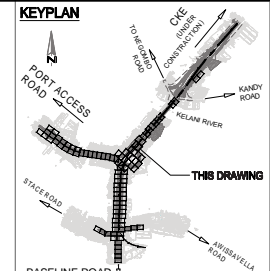
Consulting Engineers & Architects Associated (Pvt) Ltd.

NO	DATE	DESCRIPTION

PREPARATORY SURVEY ON TRAFFIC IMPROVEMENT PROJECT AROUND NEW KELANI BRIDGE

TRAFFIC IMPROVEMENT PROJECT AROUND 2nd NEW KELANI BRIDGE  
DRG. NO: NKB-SP-010

U:05-NKB PROJECT:03-CAD:01-DWG:NKB-SP-001 TO 099 WITH NEW COORDINATE.DWG., 2013-07-10



REFERENCE

EP	Electric Post
EPHT	High Tension Electric Post
TP	Telephone Post
CP	Concrete Post
LP	Lamp Post
NB	Name Board
SB	Sign Board
ROADS	RdA (Boundary Stone)
TSP	Traffic Signal Post
GS	Guard Stone
GW	Guard Wall
TRF	Transformer
PB	Pylon Base
FH	Fire Hydrant
GB	Gantry Base
BL	Building Lavatory
BS	Bus Shelter
CB	Concrete Base
P	Permanent Building
Ty	Temporary Building
BUC	Building Under Construction
FDN	Foundation
V	Valve
WV	Water Valve
GWHT	Over Head Water Tank
WT	Water Tank
GL	Gully
MH	Manhole
MHT	Manhole Telecom
MHW	Manhole Water
MHS	Manhole Sewer
TCB	Telecom Cable Box
ECB	Electric Cable Box
SPT	Septic Tank
G	Gate
GP	Gate Post
C&L	Culvert
MCh	Masonry Drain
EDn	Earth Drain
BB	Bank Bottom
TB	Bank Top
GBW	Gabion Wall
EF	Electric Fence
ECL	Electric Cable Line Under Ground
ORL	Oil Pipe Line
DF	Dry Fence
IF	Iron Fence
LF	Live Fence
RW	Retaining Wall
K	Keel
SF	Stone Fence
W	Wall
WF	Wire Fence
WDF	Wooden Fence
WLF	Wire Live Fence
WMP	Wire Mesh Fence
ZF	Zinc Fence

0 2 4m  
SCALE 1:200

Original Drawing Size A3

DEMOCRATIC SOCIALIST REPUBLIC OF SRI LANKA  
MINISTRY OF PORTS AND HIGHWAYS

**Road Development Authority**

Oriental Consultants Co., Ltd.

Consulting Engineers & Architects Associated (Pvt) Ltd.

PREPARATORY SURVEY ON TRAFFIC  
IMPROVEMENT PROJECT AROUND NEW KELANI  
BRIDGE

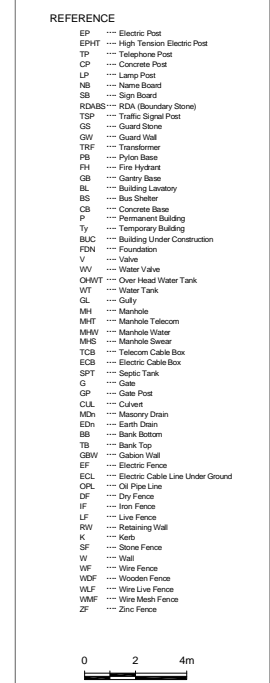
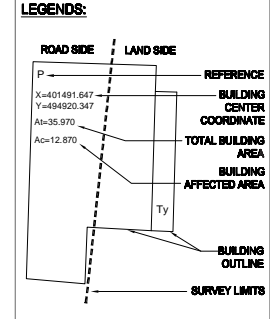
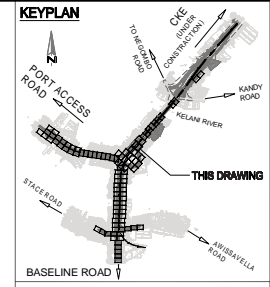
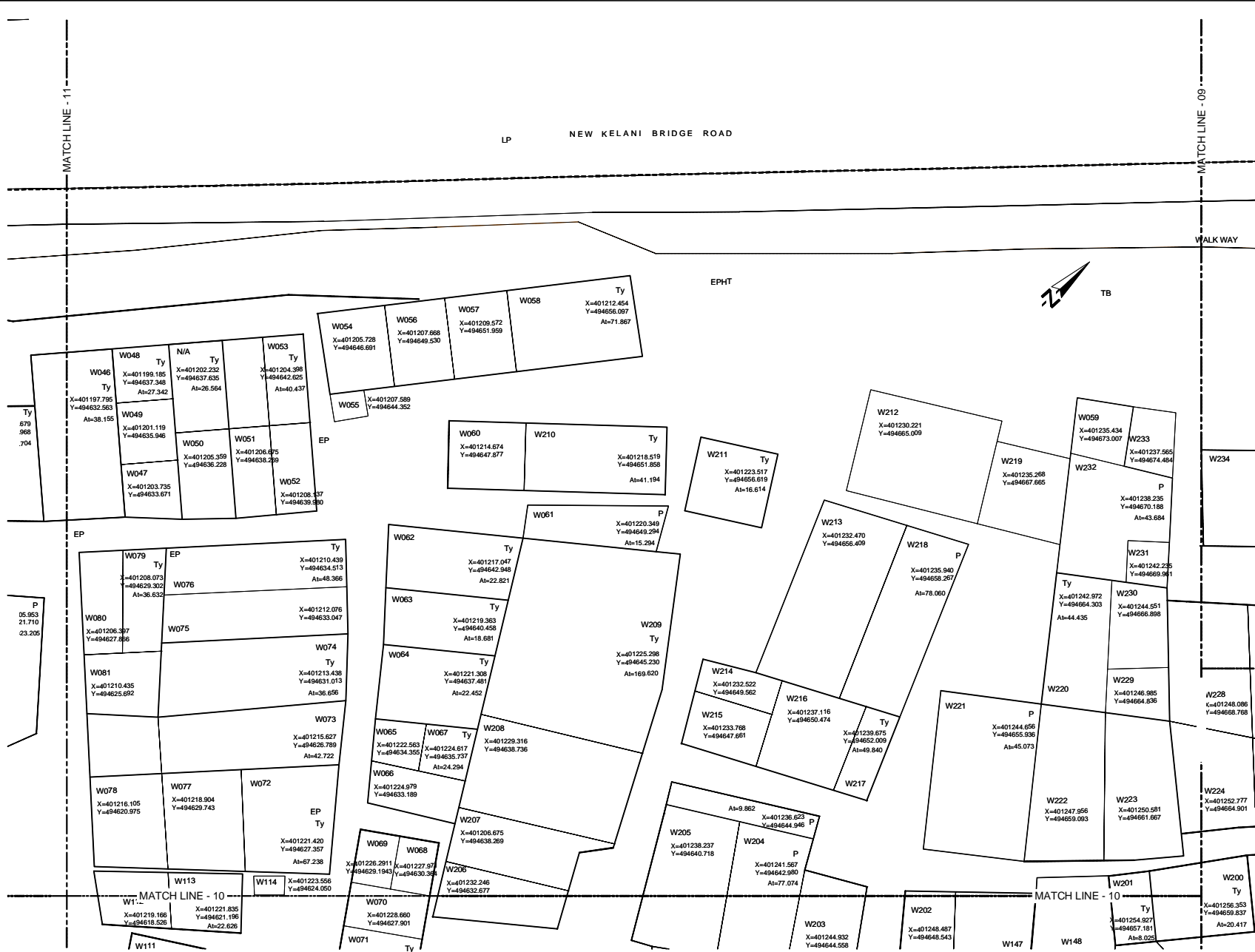
TRAFFIC IMPROVEMENT PROJECT  
AROUND 2nd NEW KELANI BRIDGE

DRG. NO: **NKB-SP-011**

NO	DATE	DESCRIPTION



UJ05-NKB PROJECT03-CAD01-DWG(NKB-SP-001 TO 099 WITH NEW COORDINATE.DWG, 2013-07-10)



Original Drawing Size A3

DEMOCRATIC SOCIALIST REPUBLIC OF SRI LANKA  
MINISTRY OF PORTS AND HIGHWAYS

**Road Development Authority**

Oriental Consultants Co., Ltd.

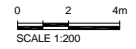
Consulting Engineers & Architects Associated (Pvt) Ltd.

NO	DATE	DESCRIPTION

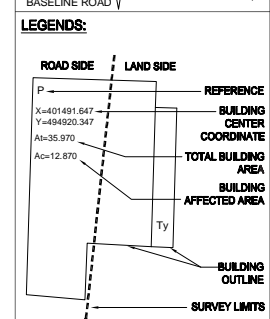
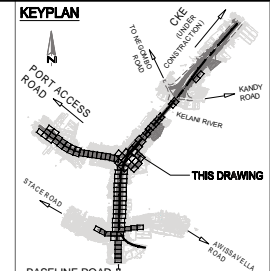
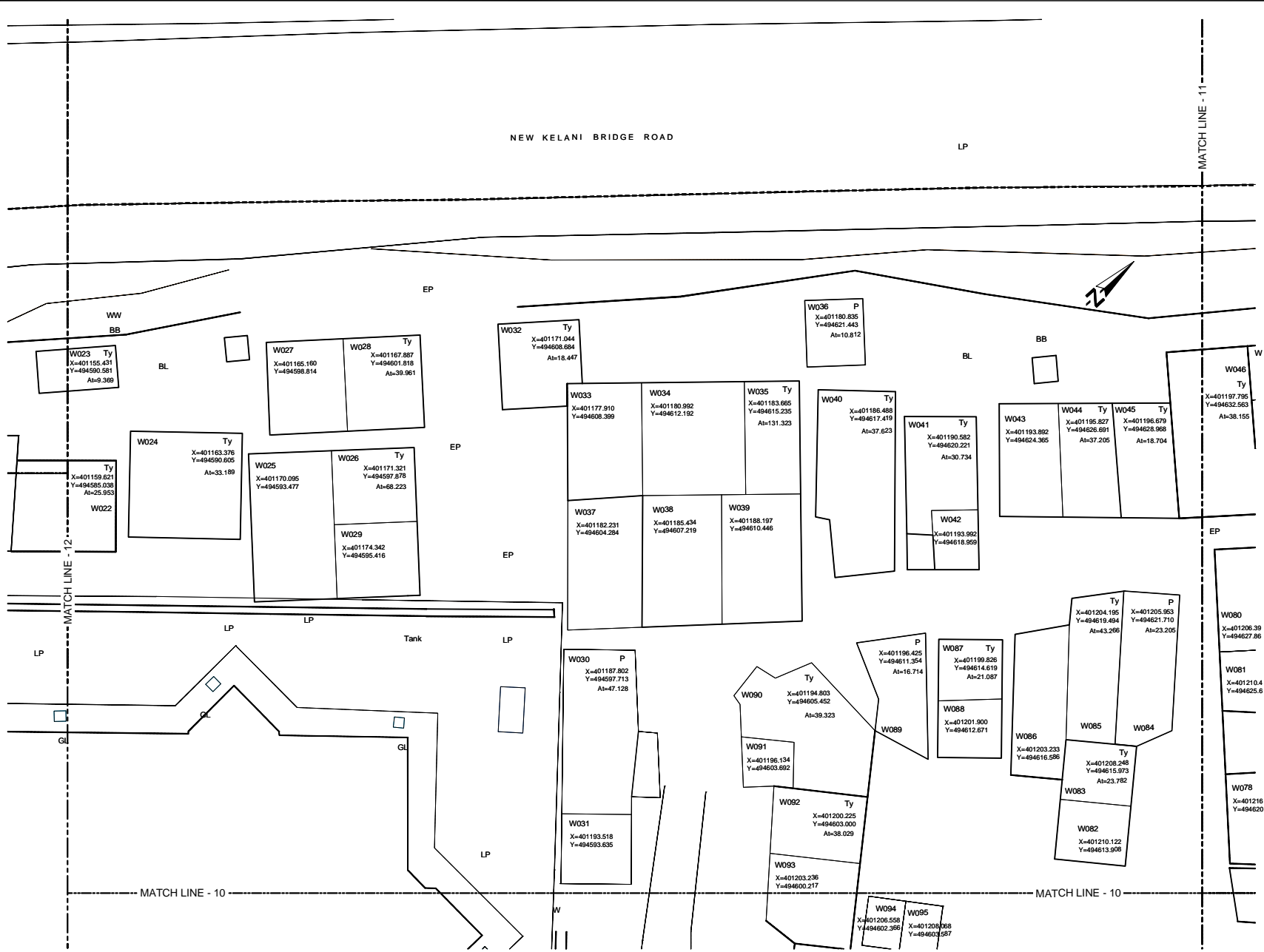
PREPARATORY SURVEY ON TRAFFIC IMPROVEMENT PROJECT AROUND NEW KELANI BRIDGE

TRAFFIC IMPROVEMENT PROJECT AROUND 2nd NEW KELANI BRIDGE

DRG. NO: **NKB-SP-012**



UJ-06-NKB PROJECT:03-CAD:01-DWG:NKB-SP-001 TO 099 WITH NEW COORDINATE.DWG., 2013-07-10



- REFERENCE**
- EP --- Electric Post
  - EPHT --- High Tension Electric Post
  - TP --- Telephone Post
  - CP --- Concrete Post
  - LP --- Lamp Post
  - NB --- Name Board
  - SB --- Sign Board
  - R048S --- RDA (Boundary Stone)
  - TSP --- Traffic Signal Post
  - GS --- Guard Stone
  - GW --- Guard Wall
  - TRF --- Transformer
  - PB --- Pylon Base
  - FH --- Fire Hydrant
  - GB --- Gantry Base
  - BL --- Building Lavatory
  - BS --- Bus Shelter
  - CB --- Concrete Base
  - P --- Permanent Building
  - Ty --- Temporary Building
  - BUC --- Building Under Construction
  - FN --- Foundation
  - V --- Valve
  - WW --- Water Valve
  - GWHT --- Over Head Water Tank
  - WT --- Water Tank
  - GL --- Gully
  - MH --- Manhole
  - MHT --- Manhole Telecom
  - MHW --- Manhole Water
  - MHS --- Manhole Sewer
  - TCB --- Telecom Cable Box
  - ECB --- Electric Cable Box
  - SPT --- Septic Tank
  - G --- Gate
  - GP --- Gate Post
  - CUL --- Culvert
  - MCh --- Masonry Drain
  - EDn --- Earth Drain
  - BB --- Bank Bottom
  - TB --- Bank Top
  - GBW --- Gabion Wall
  - EF --- Electric Fence
  - ECL --- Electric Cable Line Under Ground
  - ORL --- Oil Pipe Line
  - DF --- Dry Fence
  - IF --- Iron Fence
  - LF --- Live Fence
  - RW --- Retaining Wall
  - K --- Kerb
  - SF --- Stone Fence
  - W --- Wall
  - WF --- Wire Fence
  - WDF --- Wooden Fence
  - WLF --- Wire Live Fence
  - WMP --- Wire Mesh Fence
  - ZF --- Zinc Fence
- 0 2 4m  
SCALE 1:200

Original Drawing Size A3

DEMOCRATIC SOCIALIST REPUBLIC OF SRI LANKA  
MINISTRY OF PORTS AND HIGHWAYS

**Road Development Authority**

Oriental Consultants Co., Ltd.

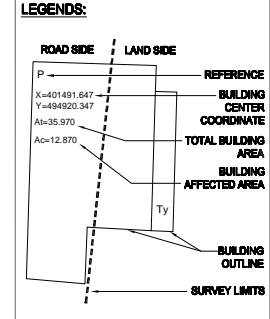
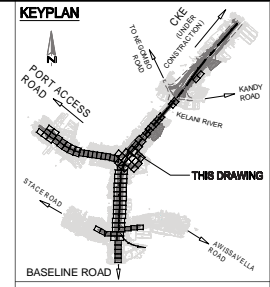
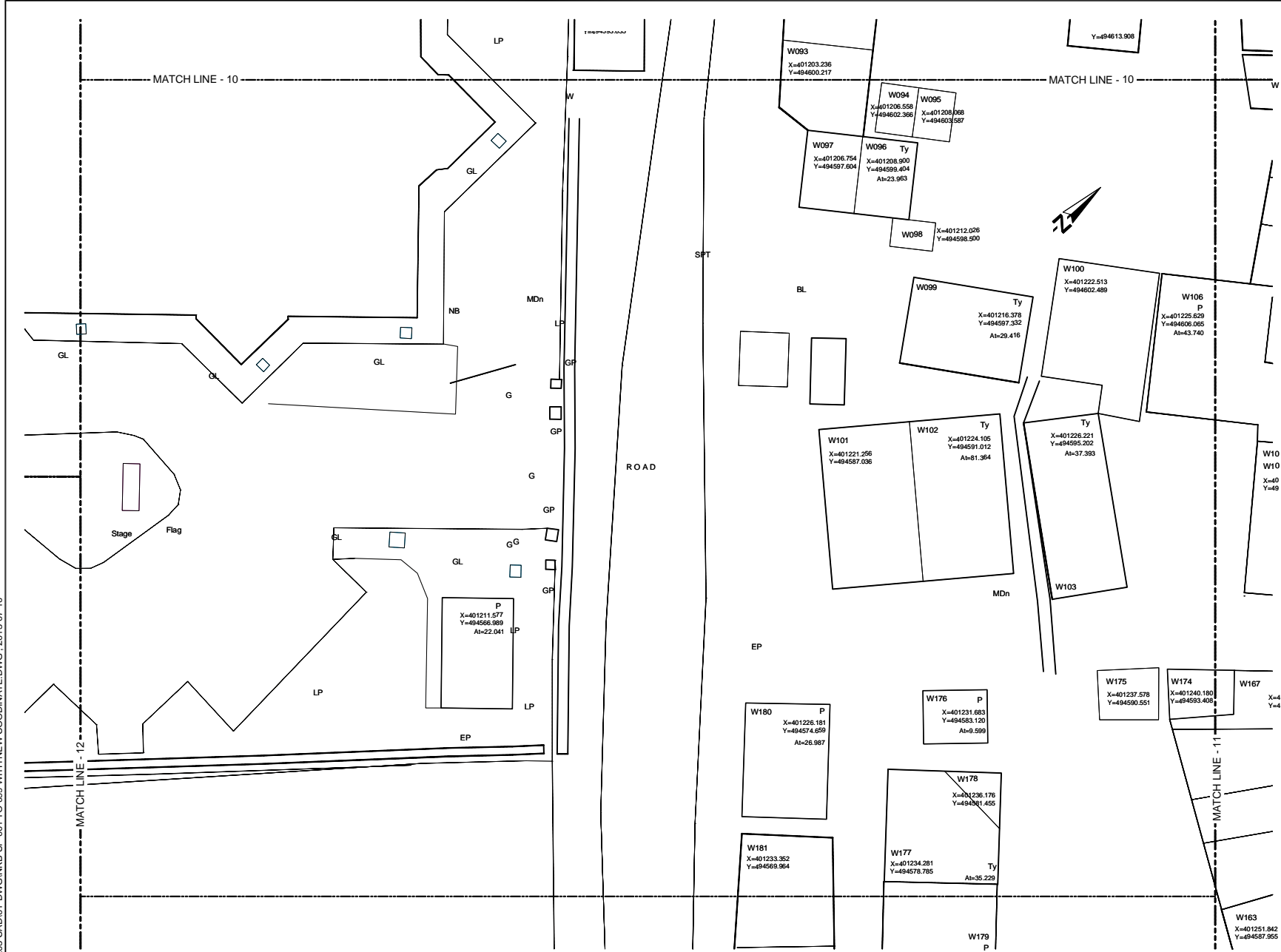
Consulting Engineers & Architects Associated (Pvt) Ltd.

NO	DATE	DESCRIPTION

PREPARATORY SURVEY ON TRAFFIC IMPROVEMENT PROJECT AROUND NEW KELANI BRIDGE

TRAFFIC IMPROVEMENT PROJECT AROUND 2nd NEW KELANI BRIDGE  
DRG. NO: NKB-SP-013

U:\06-NKB PROJECT\03-CAD\01-DWG\NKB-SP-001 TO 099 WITH NEW COORDINATE.DWG\_2013-07-10



- REFERENCE**
- EP --- Electric Post
  - EPHT --- High Tension Electric Post
  - TP --- Telephone Post
  - CP --- Concrete Post
  - LP --- Lamp Post
  - NB --- Name Board
  - SB --- Sign Board
  - ROADS --- RDA (Boundary Stone)
  - TSP --- Traffic Signal Post
  - GS --- Guard Stone
  - GW --- Guard Wall
  - TRF --- Transformer
  - PB --- Pylon Base
  - FH --- Fire Hydrant
  - GB --- Gantry Base
  - BL --- Building Lavatory
  - BS --- Bus Shelter
  - CB --- Concrete Base
  - P --- Permanent Building
  - Ty --- Temporary Building
  - BUC --- Building Under Construction
  - FDN --- Foundation
  - V --- Valve
  - WV --- Water Valve
  - GWMT --- Over Head Water Tank
  - WT --- Water Tank
  - GL --- Gully
  - MH --- Manhole
  - MHT --- Manhole Telecom
  - MHW --- Manhole Water
  - MHS --- Manhole Sewer
  - TCB --- Telecom Cable Box
  - ECB --- Electric Cable Box
  - SPT --- Septic Tank
  - G --- Gate
  - GP --- Gate Post
  - CUL --- Culvert
  - MDn --- Masonry Drain
  - EDn --- Earth Drain
  - BB --- Bank Bottom
  - TB --- Bank Top
  - GBW --- Gabion Wall
  - EF --- Electric Fence
  - ECL --- Electric Cable Line Under Ground
  - ORL --- Oil Pipe Line
  - DF --- Dry Fence
  - IF --- Iron Fence
  - LF --- Live Fence
  - RW --- Retaining Wall
  - K --- Kerb
  - SF --- Stone Fence
  - W --- Wall
  - WF --- Wire Fence
  - WDF --- Wooden Fence
  - WLF --- Wire Live Fence
  - WMP --- Wire Mesh Fence
  - ZF --- Zinc Fence

Original Drawing Size A3

DEMOCRATIC SOCIALIST REPUBLIC OF SRI LANKA  
MINISTRY OF PORTS AND HIGHWAYS

**Road Development Authority**

ORICONSLU Oriental Consultants Co., Ltd.

CEA Consulting Engineers & Architects Associated (Pvt) Ltd.

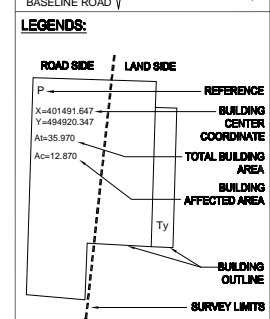
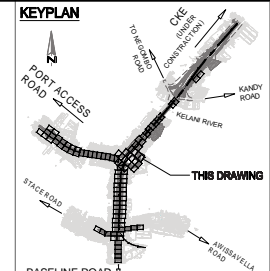
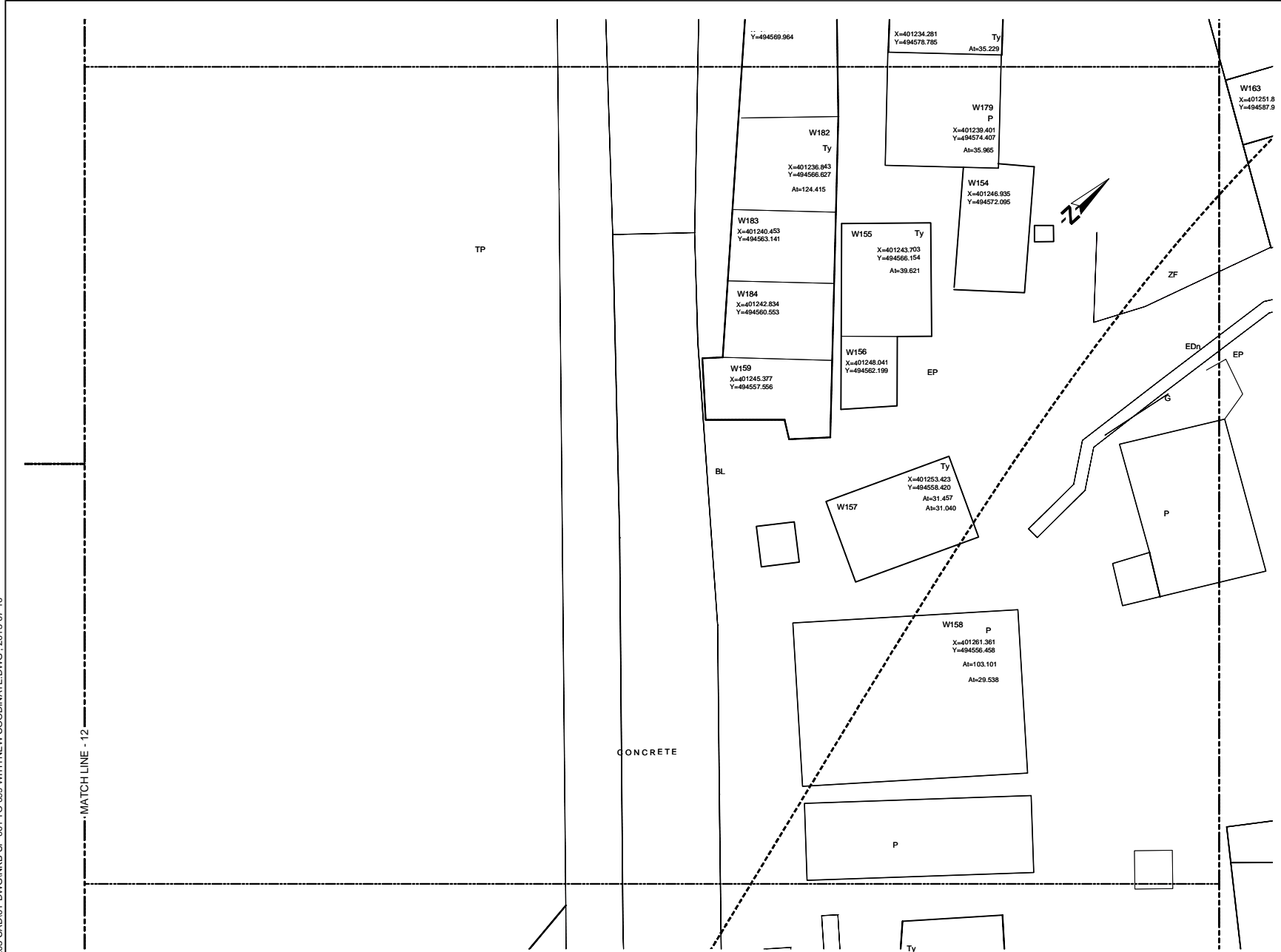
NO	DATE	DESCRIPTION

PREPARATORY SURVEY ON TRAFFIC IMPROVEMENT PROJECT AROUND NEW KELANI BRIDGE

TRAFFIC IMPROVEMENT PROJECT AROUND 2nd NEW KELANI BRIDGE

DRG. NO: NKB-SP-014

U:\06-NKB PROJECT\03-CAD\01-DWG\NKB-SP-001 TO 099 WITH NEW COORDINATE.DWG, 2013-07-10



- REFERENCE**
- EP --- Electric Post
  - EPHT --- High Tension Electric Post
  - TP --- Telephone Post
  - CP --- Concrete Post
  - LP --- Lamp Post
  - NB --- Name Board
  - SB --- Sign Board
  - RDMBS --- RDA (Boundary Stone)
  - TSP --- Traffic Signal Post
  - GS --- Guard Stone
  - GW --- Guard Wall
  - TRF --- Transformer
  - PB --- Pylon Base
  - FH --- Fire Hydrant
  - GB --- Gantry Base
  - BL --- Building Lavatory
  - BS --- Bus Shelter
  - CB --- Concrete Base
  - P --- Permanent Building
  - Ty --- Temporary Building
  - BUC --- Building Under Construction
  - FDN --- Foundation
  - V --- Valve
  - WV --- Water Valve
  - CHWT --- Over Head Water Tank
  - WT --- Water Tank
  - GL --- Gully
  - MH --- Manhole
  - MHT --- Manhole Telecom
  - MHW --- Manhole Water
  - MHS --- Manhole Sewer
  - TCB --- Telecom Cable Box
  - ECB --- Electric Cable Box
  - SPT --- Septic Tank
  - G --- Gate
  - GP --- Gate Post
  - CUL --- Culvert
  - MCh --- Masonry Drain
  - EDn --- Earth Drain
  - BB --- Bank Bottom
  - TB --- Bank Top
  - GBW --- Gabion Wall
  - EF --- Electric Fence
  - ECL --- Electric Cable Line Under Ground
  - ORL --- Oil Pipe Line
  - DF --- Dry Fence
  - IF --- Iron Fence
  - LF --- Live Fence
  - RW --- Retaining Wall
  - K --- Kerb
  - SF --- Stone Fence
  - W --- Wall
  - WF --- Wire Fence
  - WOF --- Wooden Fence
  - WLF --- Wire Live Fence
  - WMP --- Wire Mesh Fence
  - ZF --- Zinc Fence
- 0 2 4m  
SCALE 1:200

Original Drawing Size A3

DEMOCRATIC SOCIALIST REPUBLIC OF SRI LANKA  
MINISTRY OF PORTS AND HIGHWAYS

**Road Development Authority**

Oriental Consultants Co., Ltd.

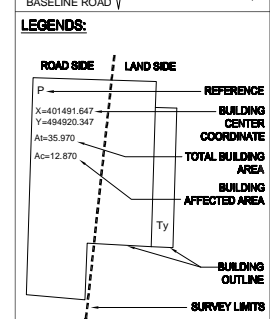
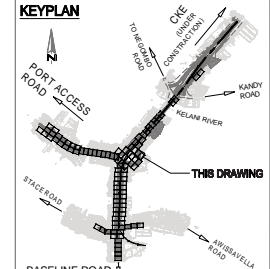
Consulting Engineers & Architects Associated (Pvt) Ltd.

NO	DATE	DESCRIPTION

PREPARATORY SURVEY ON TRAFFIC IMPROVEMENT PROJECT AROUND NEW KELANI BRIDGE

TRAFFIC IMPROVEMENT PROJECT AROUND 2nd NEW KELANI BRIDGE  
DRG. NO: NKB-SP-015

U:\06-NKB PROJECT\03-CAD\01-DWG\NKB-SP-001 TO 099 WITH NEW COORDINATE.DWG\_2013-07-10



- REFERENCE**
- EP --- Electric Post
  - EPHT --- High Tension Electric Post
  - TP --- Telephone Post
  - CP --- Concrete Post
  - LP --- Lamp Post
  - NB --- Name Board
  - SB --- Sign Board
  - RDMS --- RDA (Boundary Stone)
  - TSP --- Traffic Signal Post
  - GS --- Guard Stone
  - GW --- Guard Wall
  - TRE --- Transformer
  - PB --- Pylon Base
  - FH --- Fire Hydrant
  - GB --- Gantry Base
  - BL --- Building Lavatory
  - BS --- Bus Shelter
  - CB --- Concrete Base
  - P --- Permanent Building
  - Ty --- Temporary Building
  - BUC --- Building Under Construction
  - FDN --- Foundation
  - V --- Valve
  - WV --- Water Valve
  - GHWT --- Over Head Water Tank
  - WT --- Water Tank
  - GL --- Gully
  - MH --- Manhole
  - MHT --- Manhole Telecom
  - MHW --- Manhole Water
  - MHS --- Manhole Sewer
  - TCB --- Telecom Cable Box
  - ECB --- Electric Cable Box
  - SPT --- Septic Tank
  - G --- Gate
  - GP --- Gate Post
  - CUL --- Culvert
  - MCh --- Masonry Drain
  - EDn --- Earth Drain
  - BB --- Bank Bottom
  - TB --- Bank Top
  - GBW --- Gabion Wall
  - EF --- Electric Fence
  - ECL --- Electric Cable Line Under Ground
  - ORL --- Oil Pipe Line
  - DF --- Dry Fence
  - IF --- Iron Fence
  - LF --- Live Fence
  - RW --- Retaining Wall
  - K --- Kerb
  - SF --- Stone Fence
  - W --- Wall
  - WF --- Wire Fence
  - WDF --- Wooden Fence
  - WLF --- Wire Live Fence
  - WMP --- Wire Mesh Fence
  - ZF --- Zinc Fence
- 0 2 4m  
SCALE 1:200

Original Drawing Size A3

DEMOCRATIC SOCIALIST REPUBLIC OF SRI LANKA  
MINISTRY OF PORTS AND HIGHWAYS

**Road Development Authority**

Oriental Consultants Co., Ltd.

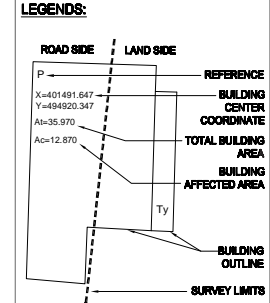
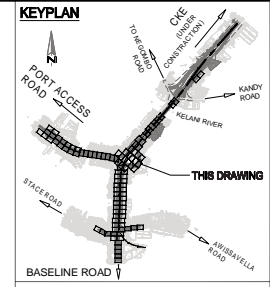
Consulting Engineers & Architects Associated (Pvt) Ltd.

NO	DATE	DESCRIPTION

PREPARATORY SURVEY ON TRAFFIC IMPROVEMENT PROJECT AROUND NEW KELANI BRIDGE

TRAFFIC IMPROVEMENT PROJECT AROUND 2nd NEW KELANI BRIDGE  
DRG. NO: NKB-SP-016

U:\06-NKB PROJECT\03-CAD\01-DWG\NKB-SP-001 TO 099 WITH NEW COORDINATE.DWG\_2013-07-10



- REFERENCE**
- EP --- Electric Post
  - EPHT --- High Tension Electric Post
  - TP --- Telephone Post
  - CP --- Concrete Post
  - LP --- Lamp Post
  - NB --- Name Board
  - SB --- Sign Board
  - RDMBS --- RDA (Boundary Stone)
  - TSP --- Traffic Signal Post
  - GS --- Guard Stone
  - GW --- Guard Wall
  - TRE --- Transformer
  - PB --- Pylon Base
  - FH --- Fire Hydrant
  - GB --- Gantry Base
  - BL --- Building Lavatory
  - BS --- Bus Shelter
  - CB --- Concrete Base
  - P --- Permanent Building
  - Ty --- Temporary Building
  - BUC --- Building Under Construction
  - FDN --- Foundation
  - V --- Valve
  - WV --- Water Valve
  - OWMT --- Over Head Water Tank
  - WT --- Water Tank
  - GL --- Gully
  - MH --- Manhole
  - MHT --- Manhole Telecom
  - MHW --- Manhole Water
  - MHS --- Manhole Sewer
  - TCB --- Telecom Cable Box
  - ECB --- Electric Cable Box
  - SPT --- Septic Tank
  - G --- Gate
  - GP --- Gate Post
  - C/L --- Culvert
  - MDn --- Masonry Drain
  - EDn --- Earth Drain
  - BB --- Bank Bottom
  - TB --- Bank Top
  - GBW --- Gabion Wall
  - EF --- Electric Fence
  - ECL --- Electric Cable Line Under Ground
  - ORL --- Oil Pipe Line
  - DF --- Dry Fence
  - IF --- Iron Fence
  - LF --- Live Fence
  - RW --- Retaining Wall
  - K --- Kerb
  - SF --- Stone Fence
  - W --- Wall
  - WF --- Wire Fence
  - WDF --- Wooden Fence
  - WLF --- Wire Live Fence
  - WMP --- Wire Mesh Fence
  - ZF --- Zinc Fence
- 0 2 4m  
SCALE 1:200

Original Drawing Size A3

DEMOCRATIC SOCIALIST REPUBLIC OF SRI LANKA  
MINISTRY OF PORTS AND HIGHWAYS

**Road Development Authority**

Oriental Consultants Co., Ltd.

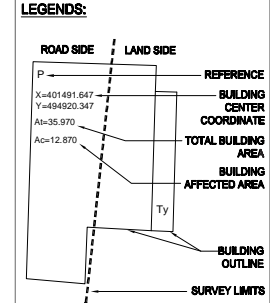
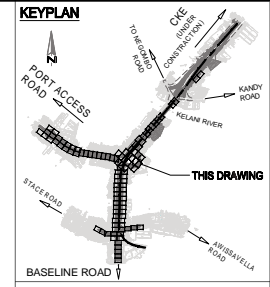
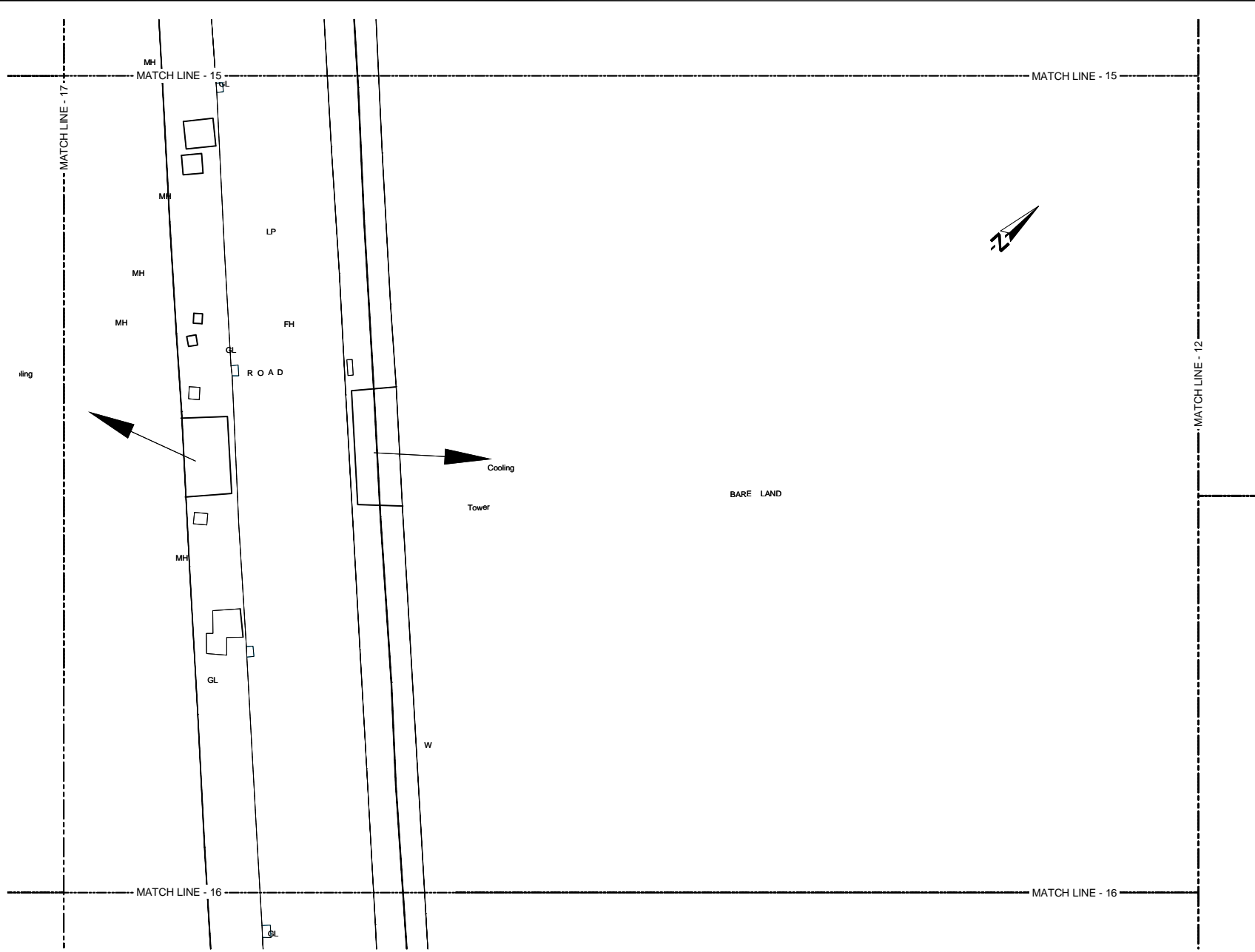
Consulting Engineers & Architects Associated (Pvt) Ltd.

NO	DATE	DESCRIPTION

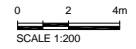
PREPARATORY SURVEY ON TRAFFIC IMPROVEMENT PROJECT AROUND NEW KELANI BRIDGE

TRAFFIC IMPROVEMENT PROJECT AROUND 2nd NEW KELANI BRIDGE  
DRG. NO: NKB-SP-017

U:\06-NKB PROJECT\03-CAD\01-DWG\NKB-SP-001 TO 099 WITH NEW COORDINATE.DWG - 2013-07-10



- REFERENCE**
- EP --- Electric Post
  - EPHT --- High Tension Electric Post
  - TP --- Telephone Post
  - CP --- Concrete Post
  - LP --- Lamp Post
  - NB --- Name Board
  - SB --- Sign Board
  - RDMBS --- RDA (Boundary Stone)
  - TSP --- Traffic Signal Post
  - GS --- Guard Stone
  - GW --- Guard Wall
  - TRE --- Transformer
  - PB --- Pylon Base
  - FH --- Fire Hydrant
  - GB --- Gantry Base
  - BL --- Building Lavatory
  - BS --- Bus Shelter
  - CB --- Concrete Base
  - P --- Permanent Building
  - Ty --- Temporary Building
  - BUC --- Building Under Construction
  - FDN --- Foundation
  - V --- Valve
  - WV --- Water Valve
  - GWMT --- Over Head Water Tank
  - WT --- Water Tank
  - GL --- Gully
  - MH --- Manhole
  - MHT --- Manhole Telecom
  - MHW --- Manhole Water
  - MHS --- Manhole Sewer
  - TCB --- Telecom Cable Box
  - ECB --- Electric Cable Box
  - SPT --- Septic Tank
  - G --- Gate
  - GP --- Gate Post
  - CUL --- Culvert
  - MCh --- Masonry Drain
  - EDn --- Earth Drain
  - BB --- Bank Bottom
  - TB --- Bank Top
  - GBW --- Gabion Wall
  - EF --- Electric Fence
  - ECL --- Electric Cable Line Under Ground
  - ORL --- Oil Pipe Line
  - DF --- Dry Fence
  - IF --- Iron Fence
  - LF --- Live Fence
  - RW --- Retaining Wall
  - K --- Kerb
  - SF --- Stone Fence
  - W --- Wall
  - WF --- Wire Fence
  - WDF --- Wooden Fence
  - WLF --- Wire Live Fence
  - WMP --- Wire Mesh Fence
  - ZF --- Zinc Fence



Original Drawing Size A3

DEMOCRATIC SOCIALIST REPUBLIC OF SRI LANKA  
MINISTRY OF PORTS AND HIGHWAYS

**Road Development Authority**

Oriental Consultants Co., Ltd.

Consulting Engineers & Architects Associated (Pvt) Ltd.

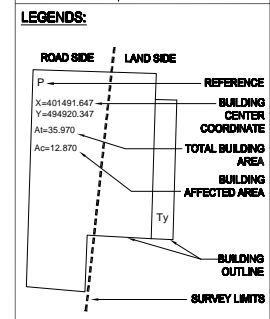
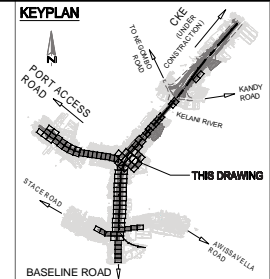
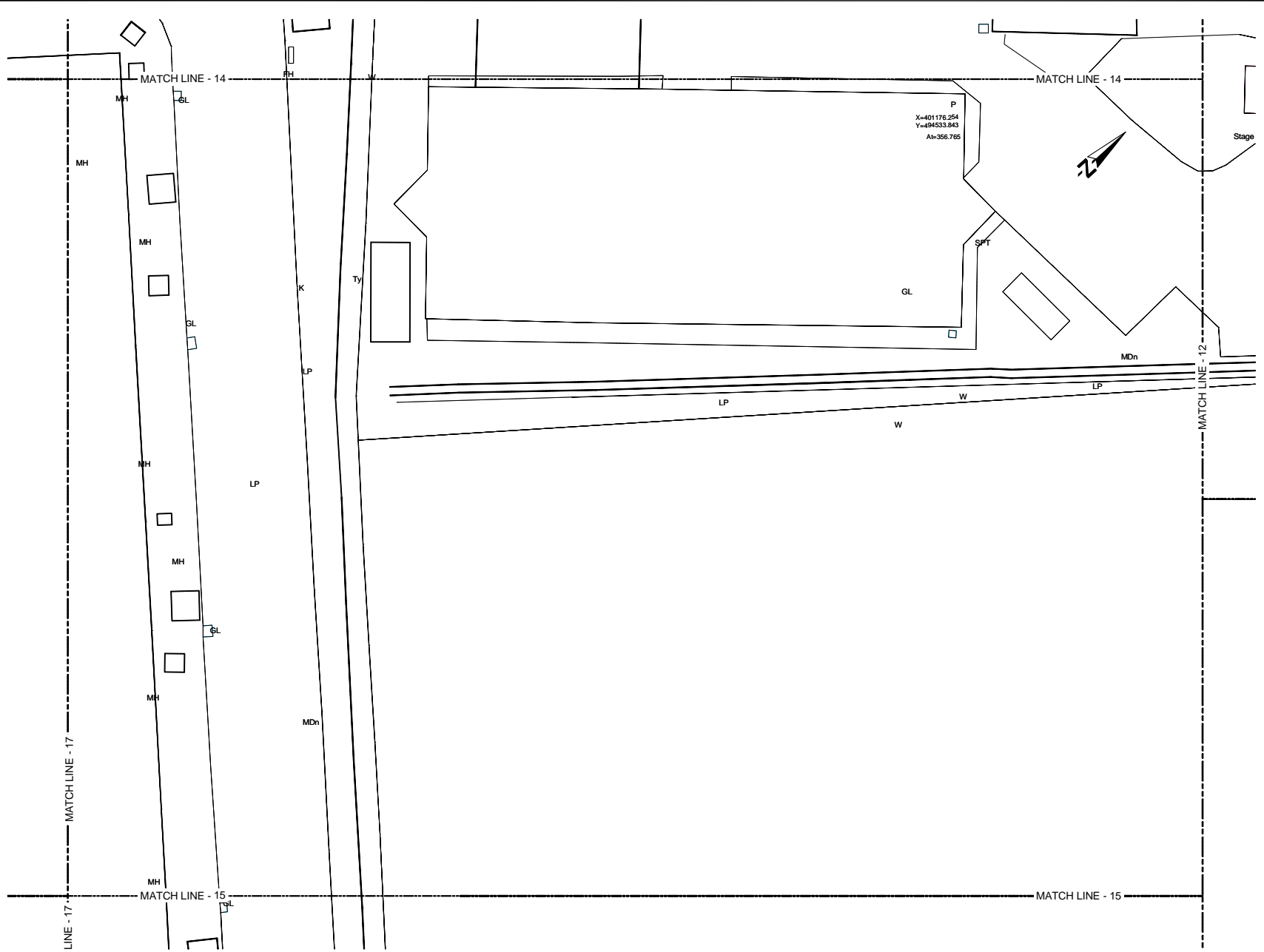
NO	DATE	DESCRIPTION

**PREPARATORY SURVEY ON TRAFFIC  
IMPROVEMENT PROJECT AROUND NEW KELANI  
BRIDGE**

**TRAFFIC IMPROVEMENT PROJECT  
AROUND 2nd NEW KELANI BRIDGE**

DRG. NO: **NKB-SP-018**

U:\06-NKB PROJECT\03-CADD\01-DWG\NKB-SP-001 TO 099 WITH NEW COORDINATE.DWG\_2013-07-10



- REFERENCE**
- EP --- Electric Post
  - EPHT --- High Tension Electric Post
  - TP --- Telephone Post
  - CP --- Concrete Post
  - LP --- Lamp Post
  - NB --- Name Board
  - SB --- Sign Board
  - RDMBS --- RDA (Boundary Stone)
  - TSP --- Traffic Signal Post
  - GS --- Guard Stone
  - GW --- Guard Wall
  - TRF --- Transformer
  - PB --- Pylon Base
  - FH --- Fire Hydrant
  - GB --- Gantry Base
  - BL --- Building Lavatory
  - BS --- Bus Shelter
  - CB --- Concrete Base
  - P --- Permanent Building
  - Ty --- Temporary Building
  - BUC --- Building Under Construction
  - FDN --- Foundation
  - V --- Valve
  - WV --- Water Valve
  - OWMT --- Over Head Water Tank
  - WT --- Water Tank
  - GL --- Gully
  - MH --- Manhole
  - MHT --- Manhole Telecom
  - MHW --- Manhole Water
  - MHS --- Manhole Sewer
  - TCB --- Telecom Cable Box
  - ECB --- Electric Cable Box
  - SPT --- Septic Tank
  - G --- Gate
  - GP --- Gate Post
  - CUL --- Culvert
  - MDn --- Masonry Drain
  - EDn --- Earth Drain
  - BB --- Bank Bottom
  - TB --- Bank Top
  - GBW --- Gabion Wall
  - EF --- Electric Fence
  - ECL --- Electric Cable Line Under Ground
  - ORL --- Oil Pipe Line
  - DF --- Dry Fence
  - IF --- Iron Fence
  - LF --- Live Fence
  - RW --- Retaining Wall
  - K --- Kerb
  - SF --- Stone Fence
  - W --- Wall
  - WF --- Wire Fence
  - WDF --- Wooden Fence
  - WLF --- Wire Live Fence
  - WMP --- Wire Mesh Fence
  - ZF --- Zinc Fence
- 0 2 4m  
SCALE 1:200

Original Drawing Size A3

**DEMOCRATIC SOCIALIST REPUBLIC OF SRI LANKA**  
MINISTRY OF PORTS AND HIGHWAYS

**Road Development Authority**

**ORICONSL** Oriental Consultants Co., Ltd.

**CEA** Consulting Engineers & Architects Associated (Pvt) Ltd.

NO	DATE	DESCRIPTION

**PREPARATORY SURVEY ON TRAFFIC IMPROVEMENT PROJECT AROUND NEW KELANI BRIDGE**

**TRAFFIC IMPROVEMENT PROJECT AROUND 2nd NEW KELANI BRIDGE**

DRG. NO: **NKB-SP-019**



