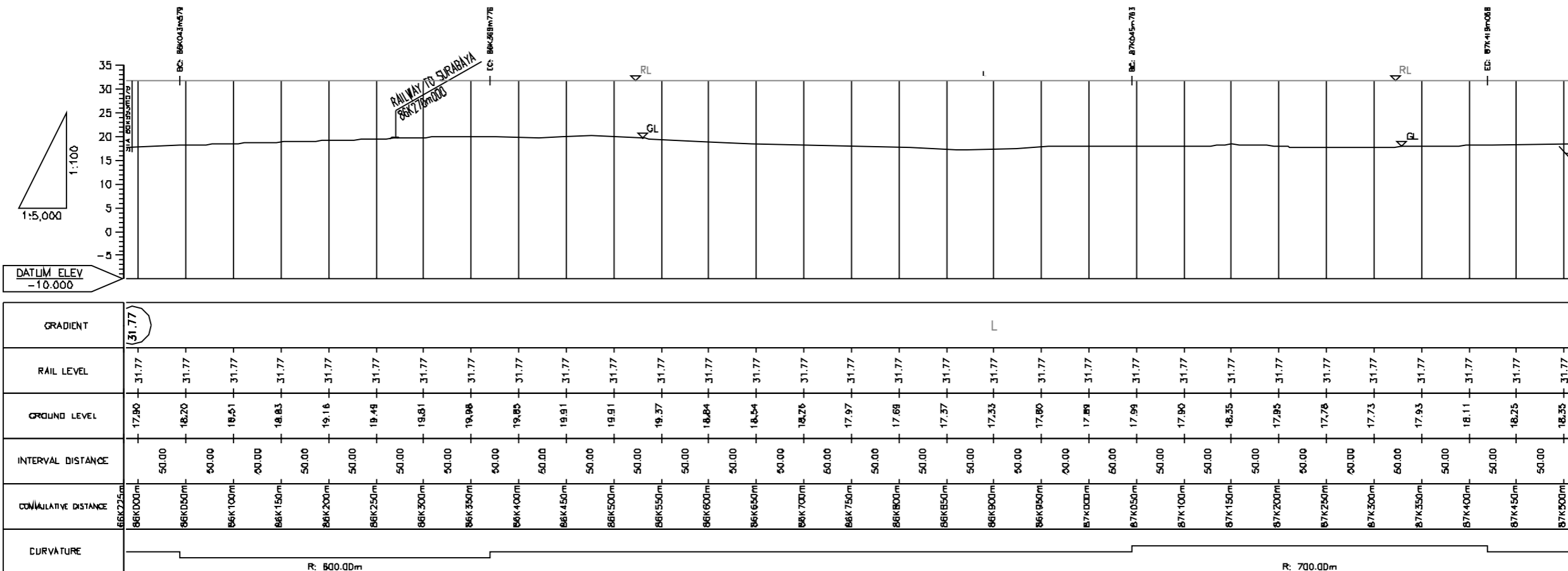
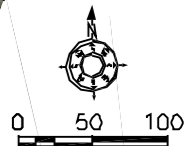


PREPARATORY SURVEY FOR JAKARTA
 MASS RAPID TRANSIT (MRT)
 EAST-WEST (E-W) LINE PROJECT

TITLE : PHASE 2 EAST
 STATION : 84K500M000-86K000M000
 PAGE : 13

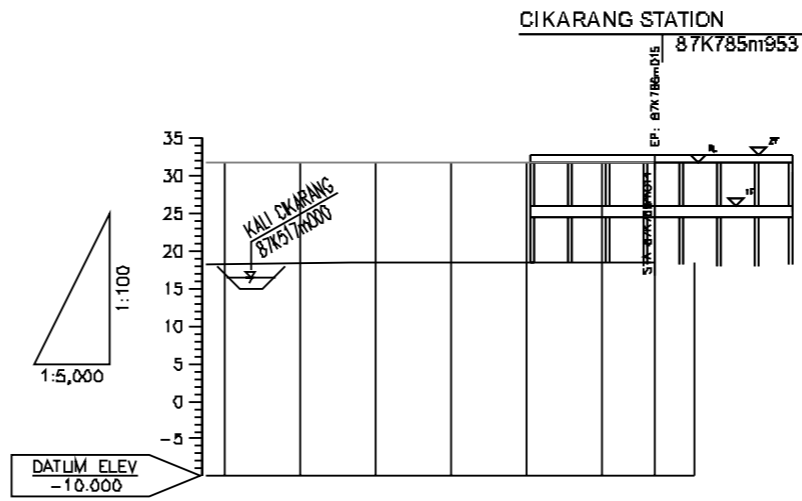
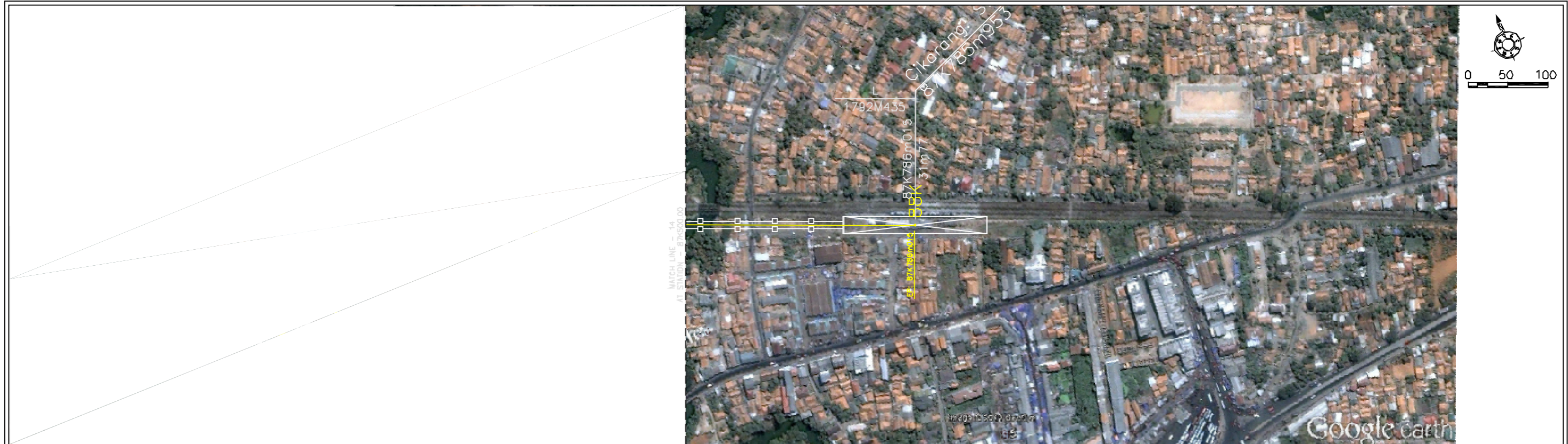
REV. No	DATE	DESCRIPTION	BY	APPROVAL



PREPARATORY SURVEY FOR JAKARTA
 MASS RAPID TRANSIT (MRT)
 EAST-WEST (E-W) LINE PROJECT

TITLE : PHASE 2 EAST
 STATION : 86K000+000-87K500+000
 PAGE : 4

REV. No	DATE	DESCRIPTION	BY	APPROVAL



GRADIENT								(31.77)
RAIL LEVEL	31.77	31.77	31.77	31.77	31.77	31.77	31.77	31.77
GROUND LEVEL	18.35	18.44	18.51	18.53	18.48	18.37	18.36	
INTERVAL DISTANCE		50.00	50.00	50.00	50.00	50.00	38.01	
CUMULATIVE DISTANCE	87K500m	87K550m	87K600m	87K650m	87K700m	87K750m	87K786m	
CURVATURE								

REV.	NO	DATE	DESCRIPTION	BY	APPROVAL

PREPARATORY SURVEY FOR JAKARTA
MASS RAPID TRANSIT (MRT)
EAST-WEST (E-W) LINE PROJECT

TITLE : PHASE 2 EAST
STATION : 87K500M000-88K000M000
PAGE : 15