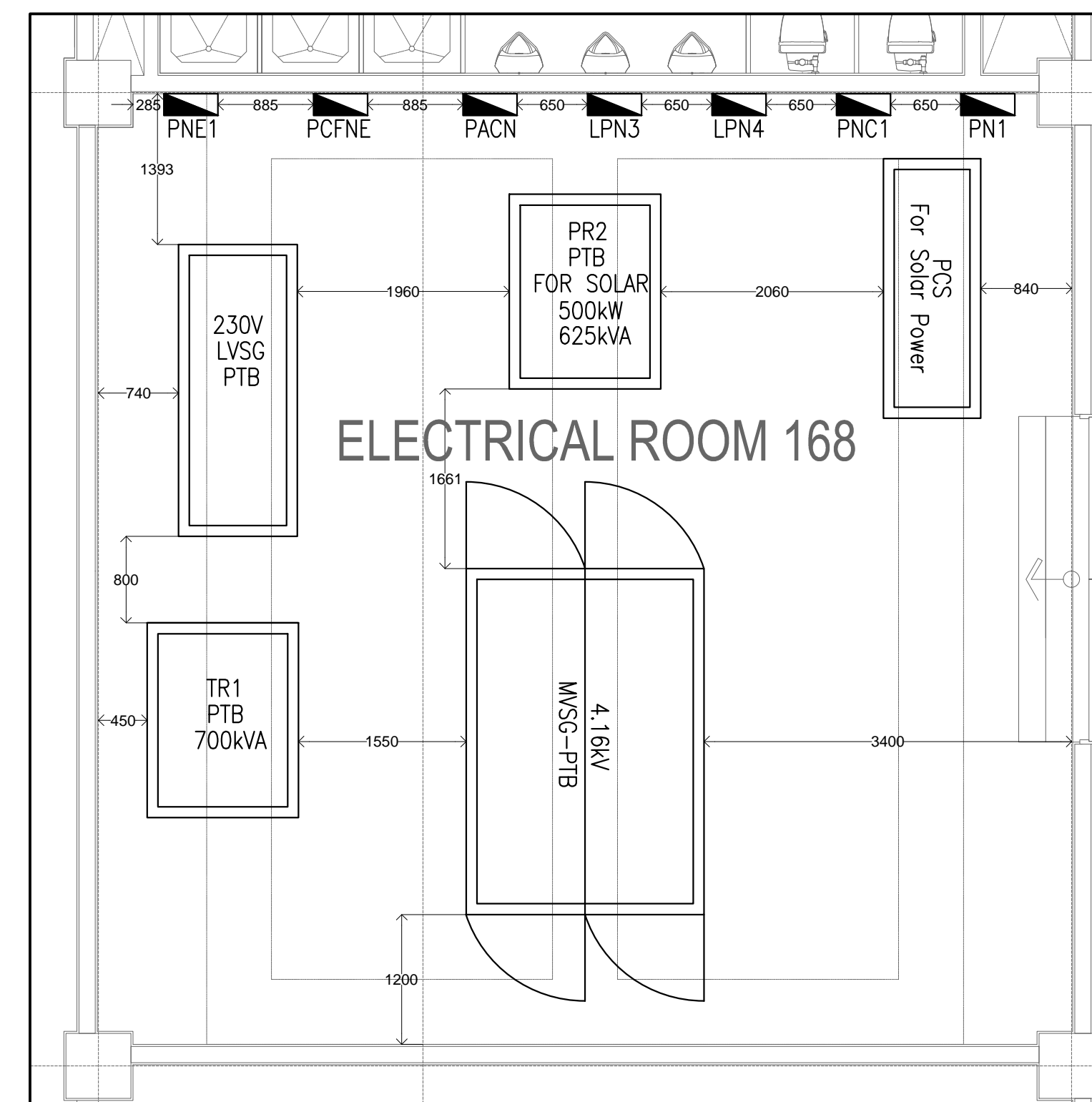
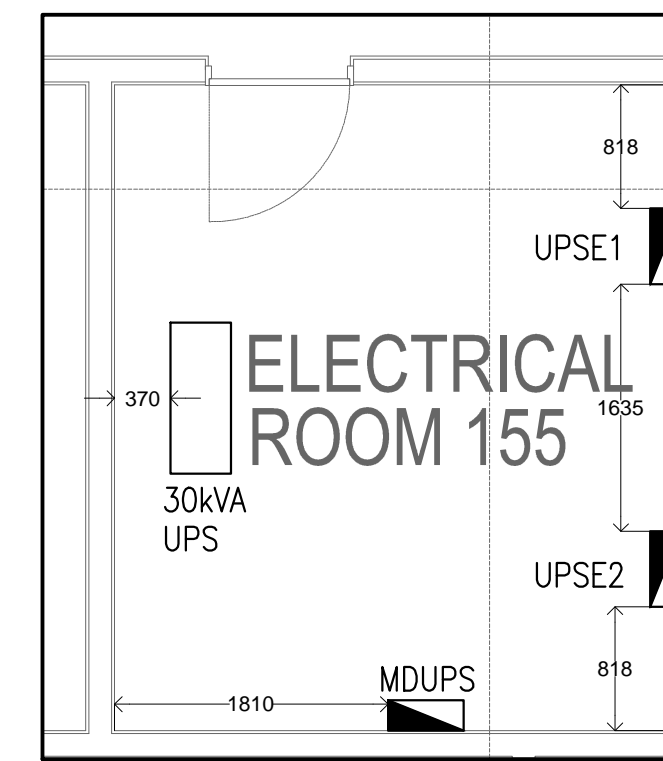
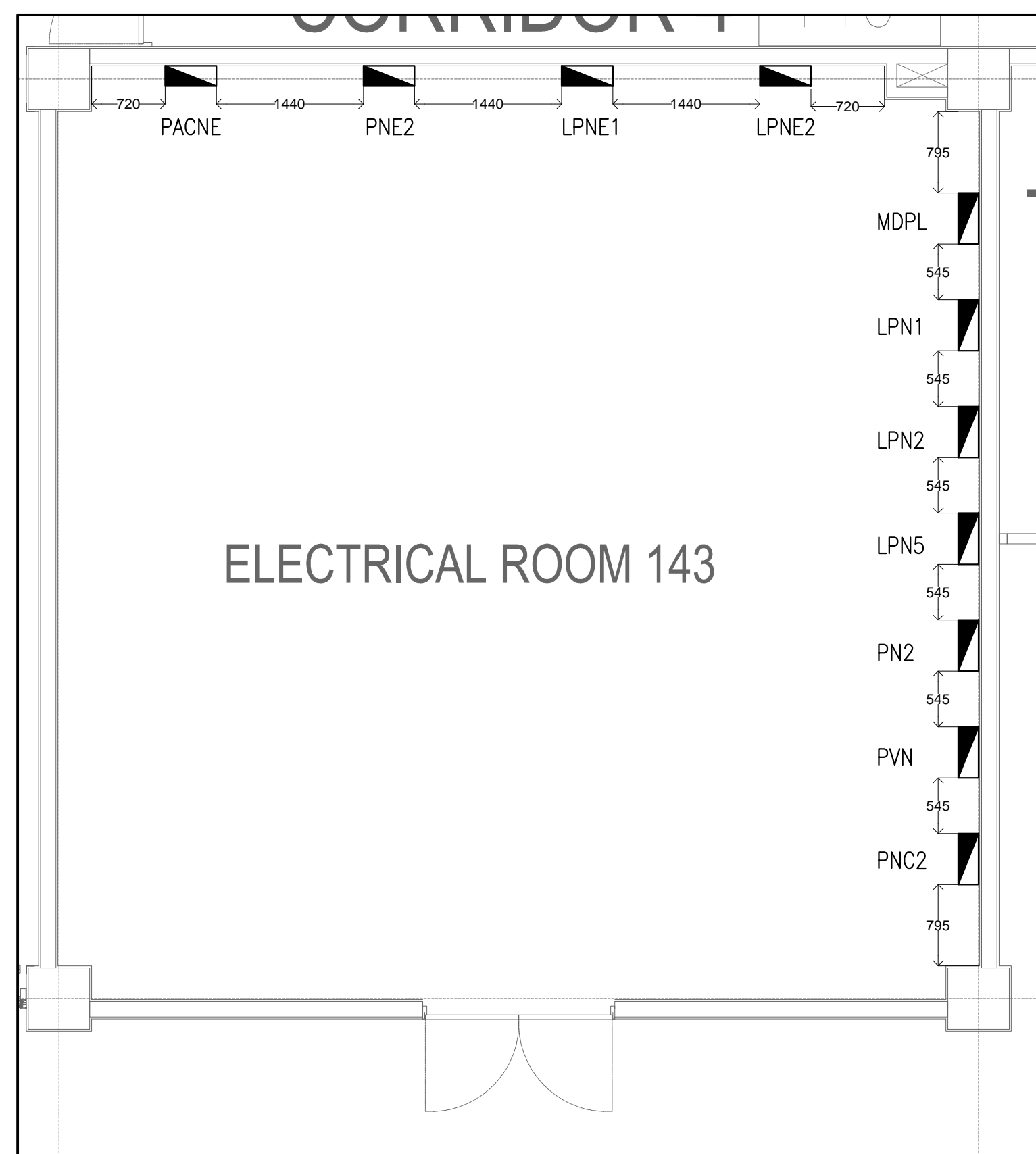
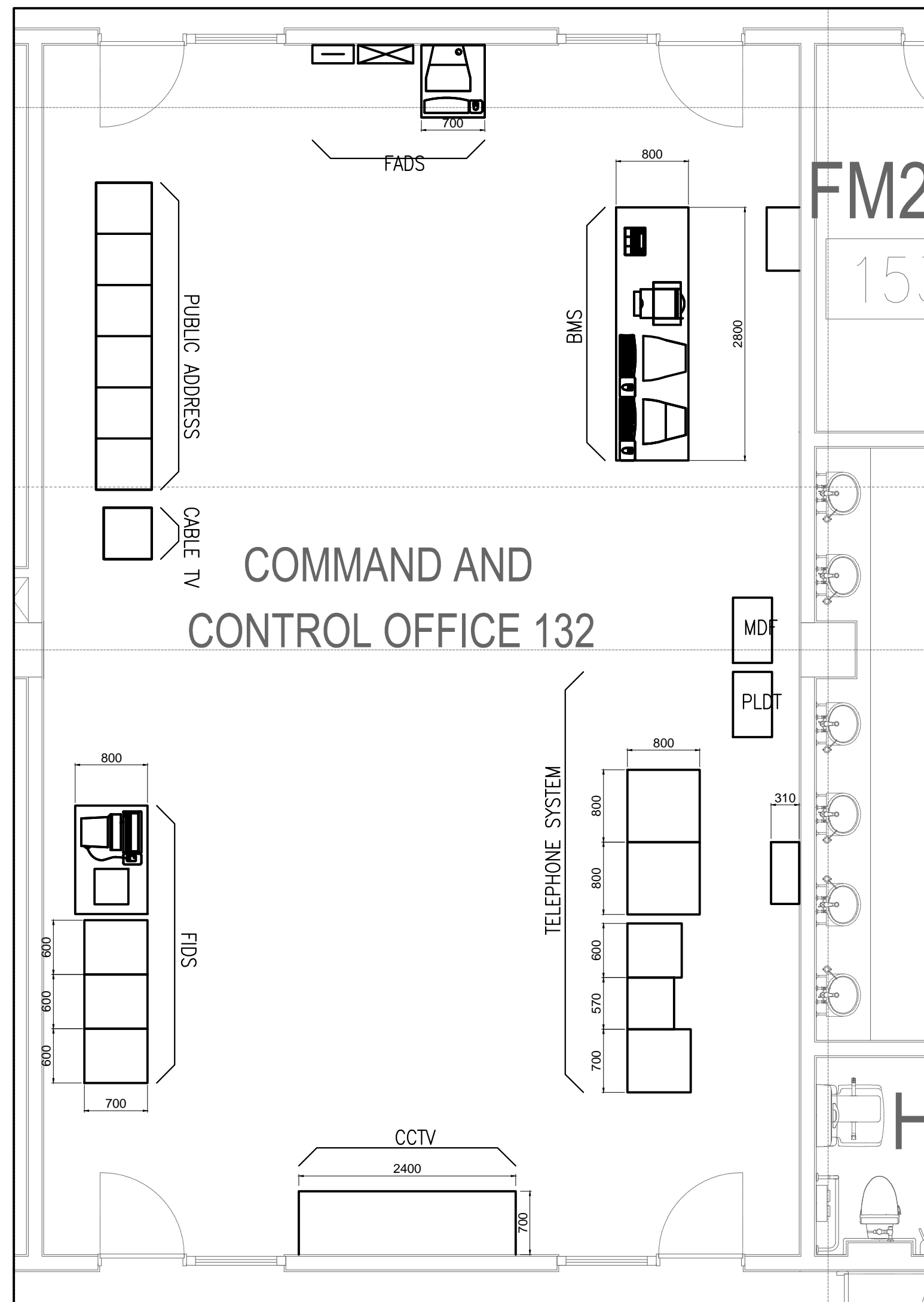
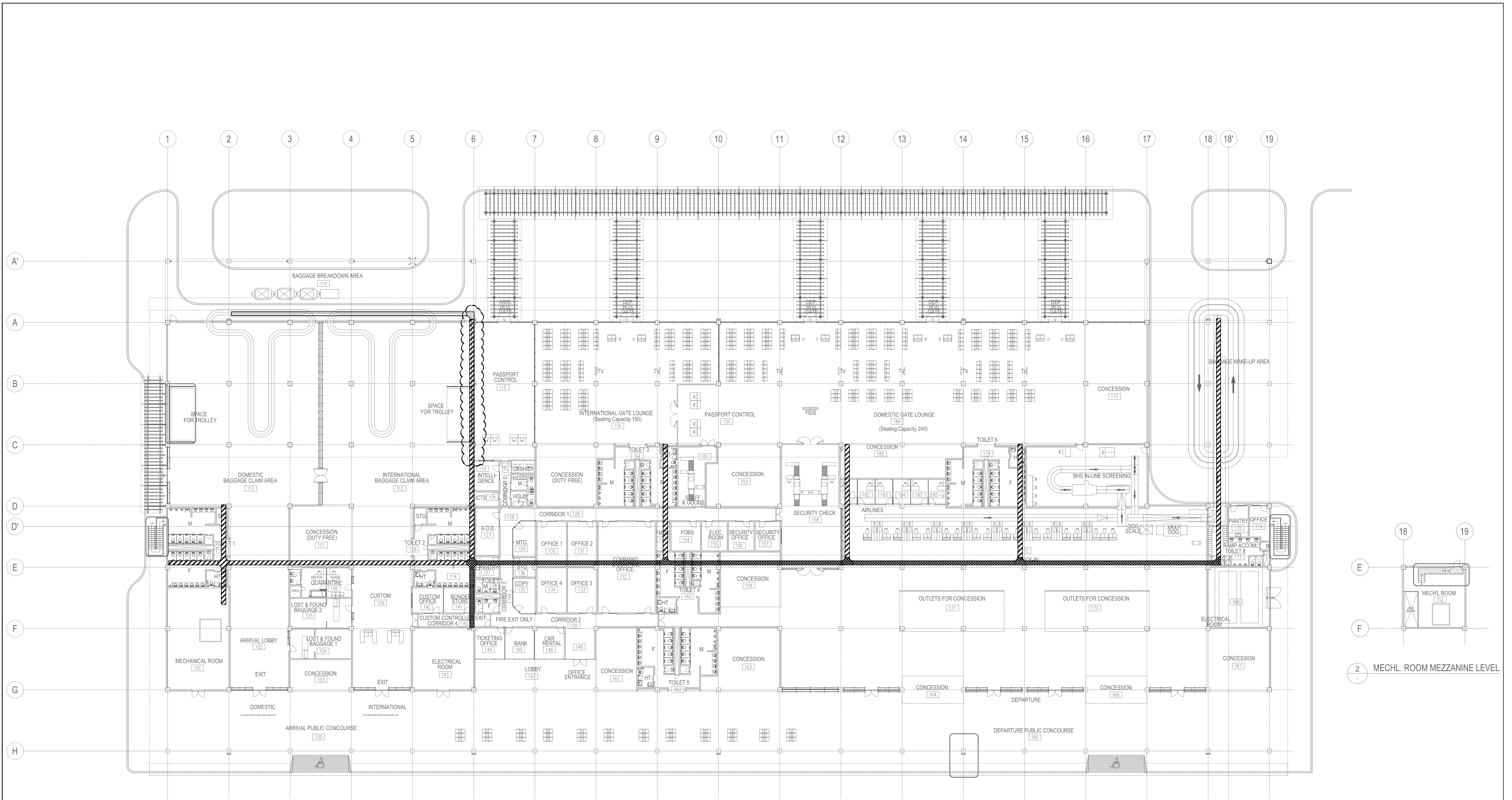


1 ELECTRICAL ROOM 168, PASSENGER TERMINAL BUILDING (PTB)
GROUND FLOOR CABLE TRENCH LAYOUT PLAN
 B1-6100-01 GRAPHIC SCALE 0 1 2 5 10m

	PREPARED BY: TEODORO N. PAMATMAT <small>PROF. ELECTRICAL ENGINEER PTR. 1403773</small> <small>REG. NO.: 1927 DATE: 1-04-13</small> <small>T.N. 119-747-900 PLACE: MANILA</small>	RECOMMENDING APPROVAL: ILDEFONSO T. PATDU, JR. <small>Assistant Secretary for Project Implementation, DOTC</small>	APPROVED: JULJANITO G. BUCAYAN, JR. <small>Undersecretary for Project Implementation, DOTC</small>	PROJECT TITLE: NEW BOHOL AIRPORT CONSTRUCTION AND SUSTAINABLE ENVIRONMENT PROTECTION PROJECT	DATE: JUNE 2013 INDEX:	AMENDMENTS:	Prepared by: WIM Checked by: HC Validated by:	SHEET CONTENTS: COMPONENT-4 BUILDING WORKS (B) SUBCOMPONENT-4-1 (B1) Passenger Terminal Building ELECTRICAL GROUND FLOOR CABLE TRENCH LAYOUT	SHEET NO: B1-6100-01 DRAWING SCALE: 1:75 m
	JICA DESIGN CONSULTANT JOINT VENTURE <small>JAPAN AIRPORT CONSULTANTS, INC. NIPPOON KOEI CO., LTD. NIS CONSULTANTS CO., LTD.</small>	LOCATION: MUNICIPALITY OF PANGLAO, PROVINCE OF BOHOL, PHILIPPINES	DATE:	INDEX:	AMENDMENTS:	Prepared by:	Checked by:	Validated by:	








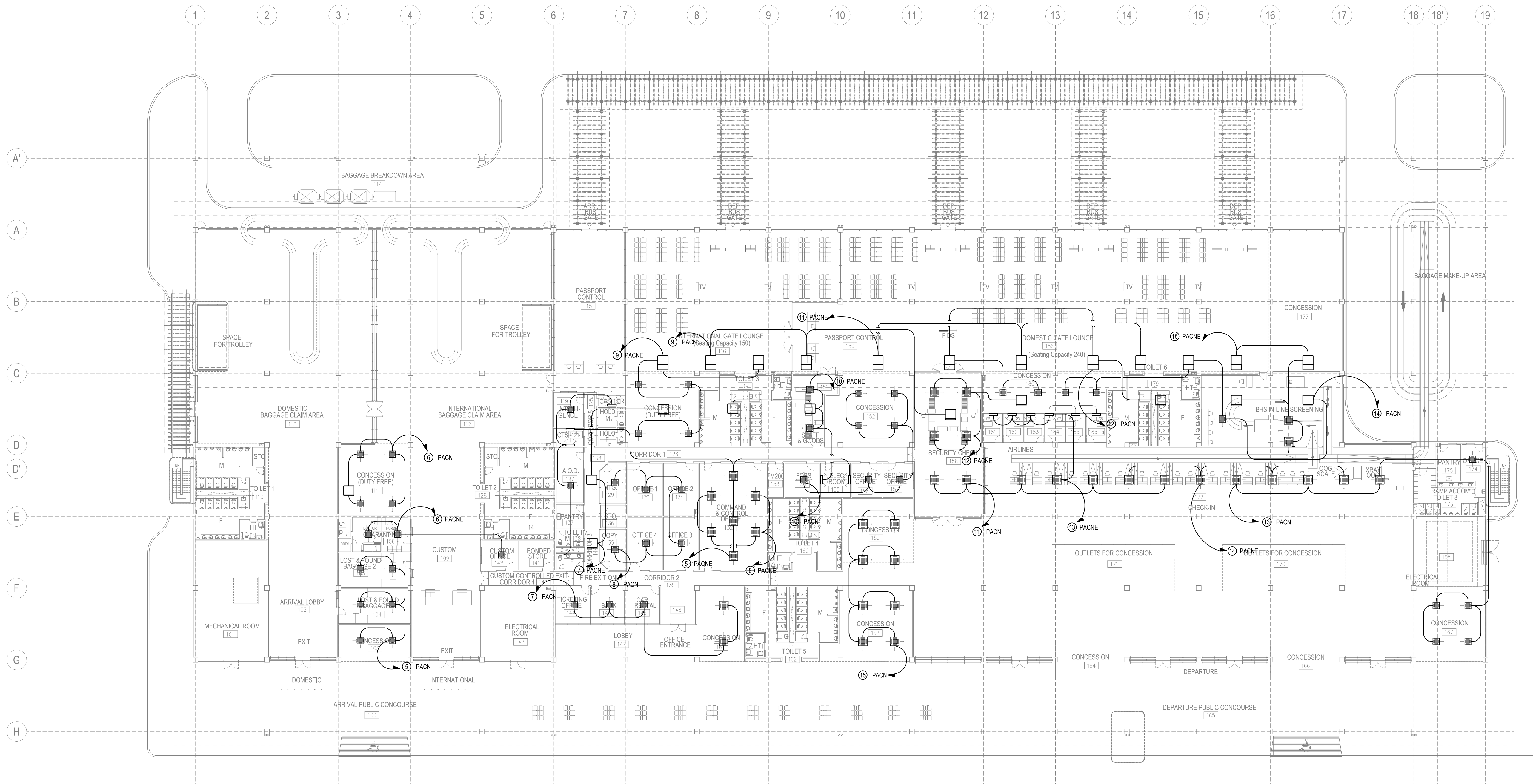
	PREPARED BY: TEODORO N. PAMATMAT <small>PROF. ELECTRICAL ENGINEER PTR. 1403773</small> <small>REG. NO.: 1927 DATE: 1-04-13</small> <small>TIN: 119-747-900 PLACE: MANILA</small>	RECOMMENDING APPROVAL: ILDEFONSO T. PATDU, JR. <small>Assistant Secretary for Project Implementation, DOTC</small>	APPROVED: JULIANITO G. BUCAYAN, JR. <small>Undersecretary for Project Implementation, DOTC</small>	PROJECT TITLE: NEW BOHOL AIRPORT CONSTRUCTION AND SUSTAINABLE ENVIRONMENT PROTECTION PROJECT	SHEET CONTENTS: COMPONENT-4 BUILDING WORKS (B) SUBCOMPONENT-4-1 (B1) Passenger Terminal Building ELECTRICAL ELECTRICAL ROOM & CCO EQUIPMENT LAYOUT	SHEET NO: B1-6100-02
	JICA DESIGN CONSULTANT JOINT VENTURE JAC JAPAN AIRPORT CONSULTANTS, INC.	TADASHI AOI <small>Team Leader</small>	ILDEFONSO T. PATDU, JR. <small>Assistant Secretary for Project Implementation, DOTC</small>	JULIANITO G. BUCAYAN, JR. <small>Undersecretary for Project Implementation, DOTC</small>	LOCATION: MUNICIPALITY OF PANGLAO, PROVINCE OF BOHOL, PHILIPPINES	DRAWING SCALE: AS SHOWN



1 ELECTRICAL EQUIPMENT AND CABLE TRAY LAYOUT PLAN

- NOTE:
- TO BE COORDINATED WITH ARCHITECT DURING ACTUAL CONSTRUCTION
 - (X2) 500mm x 100mm CABLE TRAY
 - (X2) 300mm x 100mm CABLE TRAY
 - (X2) 500mm x 100mm CABLE TRAY

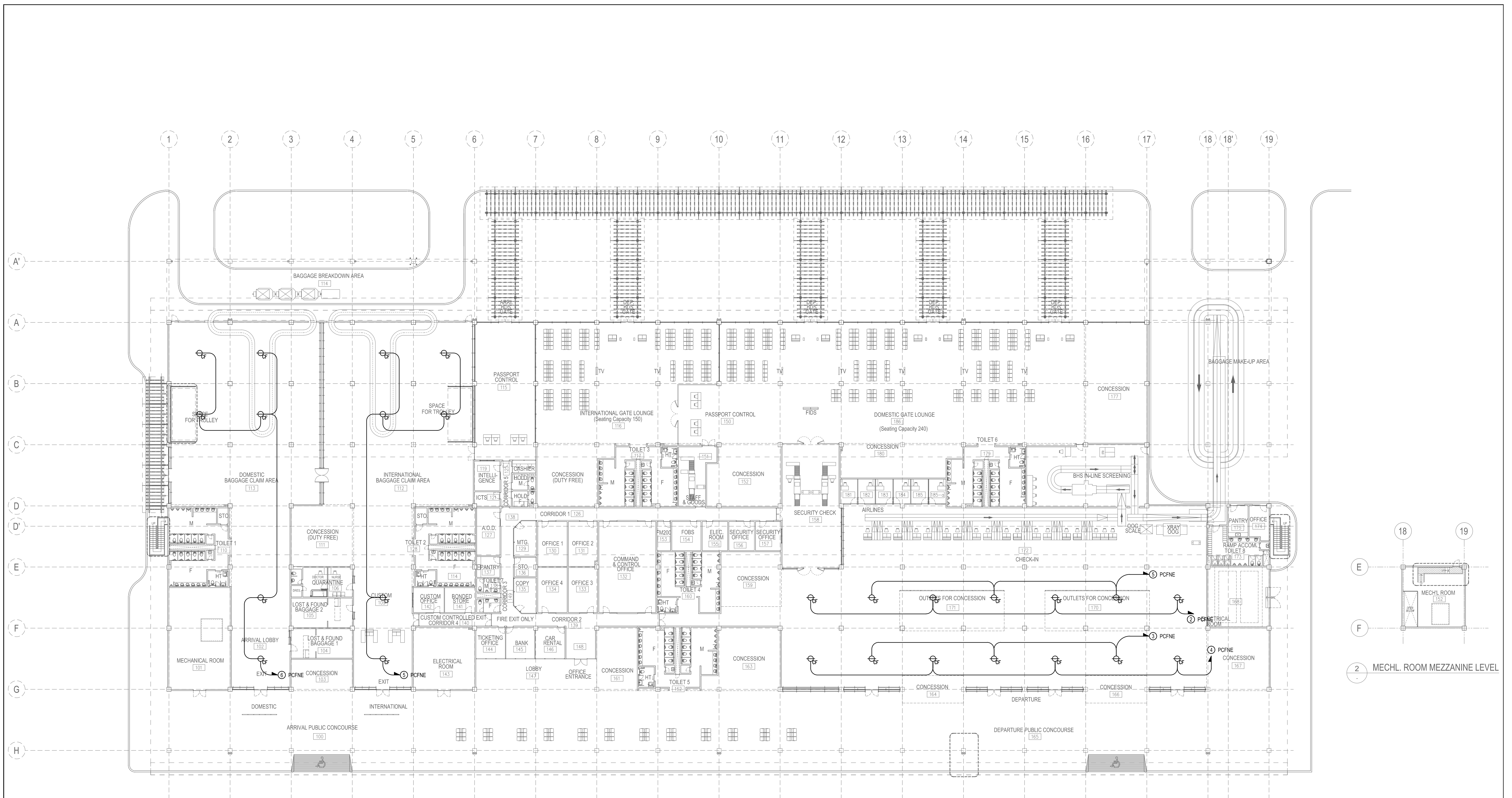
 Republic of the Philippines DEPARTMENT OF TRANSPORTATION AND COMMUNICATIONS	 JAPAN INTERNATIONAL COOPERATION AGENCY	PREPARED BY: TEODORO N. PAMATMAT <small>PROF. PROF. ELECTRICAL ENGINEER PIR. 1403773</small> <small>REG. NO.: 1927 DATE: 1-04-13</small> <small>TIN: 119-747-900 PLACE: MANILA</small>	RECOMMENDING APPROVAL: ILDEFONSO T. PATDU, JR. <small>Assistant Secretary</small> for Project Implementation, DOTC	APPROVED: JULIANITO G. BUCAYAN, JR. <small>Undersecretary</small> for Project Implementation, DOTC	PROJECT TITLE: NEW BOHOL AIRPORT CONSTRUCTION AND SUSTAINABLE ENVIRONMENT PROTECTION PROJECT LOCATION: MUNICIPALITY OF PANGLAO, PROVINCE OF BOHOL, PHILIPPINES	SHEET CONTENTS: COMPONENT-4 BUILDING WORKS (B) SUBCOMPONENT-4-1 (B1) Passenger Terminal Building ELECTRICAL CABLE TRAY LAYOUT	SHEET NO: B1-6100-03 DRAWING SCALE: AS SHOWN
JICA DESIGN CONSULTANT JOINT VENTURE  JAPAN AIRPORT CONSULTANTS, INC.  NIPPON KOEI CO., LTD.  NIS CONSULTANTS CO., LTD.		TADASHI AOI <small>Team Leader</small>			JUNE 2013 DATE INDEX AMENDMENTS Prepared by: WIM Checked by: HC Validated by:		



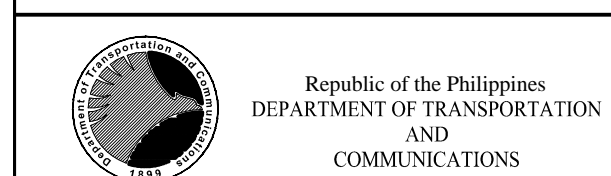
1 GROUND FLOOR AIR CONDITIONING LAYOUT

*NOTE: CKT NO. 5 OF VACNE IS ALWAYS ON STANDBY.

	PREPARED BY: TEODORO N. PAMATMAT <small>PROF. PROF. ELECTRICAL ENGINEER PTR. 1403773</small> <small>REG. NO.: 1927 DATE: 1-04-13</small> <small>T.E.N. 119-747-900 PLACE: MANILA</small>	RECOMMENDING APPROVAL: ILDEFONSO T. PATDU, JR. <small>Assistant Secretary for Project Implementation, DOTC</small>	APPROVED: JULIANITO G. BUCCAYAN, JR. <small>Undersecretary for Project Implementation, DOTC</small>	PROJECT TITLE: NEW BOHOL AIRPORT CONSTRUCTION AND SUSTAINABLE ENVIRONMENT PROTECTION PROJECT	LOCATION: MUNICIPALITY OF PANGLAO, PROVINCE OF BOHOL, PHILIPPINES	SHEET CONTENTS: COMPONENT-4 BUILDING WORKS (B) SUBCOMPONENT-4-1 (B1) Passenger Terminal Building ELECTRICAL POWER FEEDER LAYOUT1	SHEET NO: B1-6100-04
	JICA DESIGN CONSULTANT JOINT VENTURE <small>JAC JAPAN AIRPORT CONSULTANTS, INC. NIPPON KOEI CO., LTD. NIS CONSULTANTS CO., LTD.</small>	TADASHI AOI <small>Team Leader</small>	JUN 2013	DATE INDEX AMENDMENTS	Prepared by: WIM Checked by: IC Validated by:	DRAWING SCALE: AS SHOWN	



LEGEND:
 - CEILING FAN POWER SUPPLY



JAPAN INTERNATIONAL COOPERATION AGENCY

JICA DESIGN CONSULTANT JOINT VENTURE



JAPAN AIRPORT CONSULTANTS, INC.



NIPPON KOEI CO., LTD.



NIS CONSULTANTS CO., LTD.

PREPARED BY:
TEODORO N. PAMATMAT
 PROF. PROF. ELECTRICAL ENGINEER PIR. 1403773
 REG. NO.: 1927 DATE: 1-04-13
 TEL. 119-747-900 PLACE: MANILA
TADASHI AOI
 Team Leader

RECOMMENDING APPROVAL:
ILDEFONSO T. PATDU, JR.
 Assistant Secretary
 for Project Implementation, DOTC

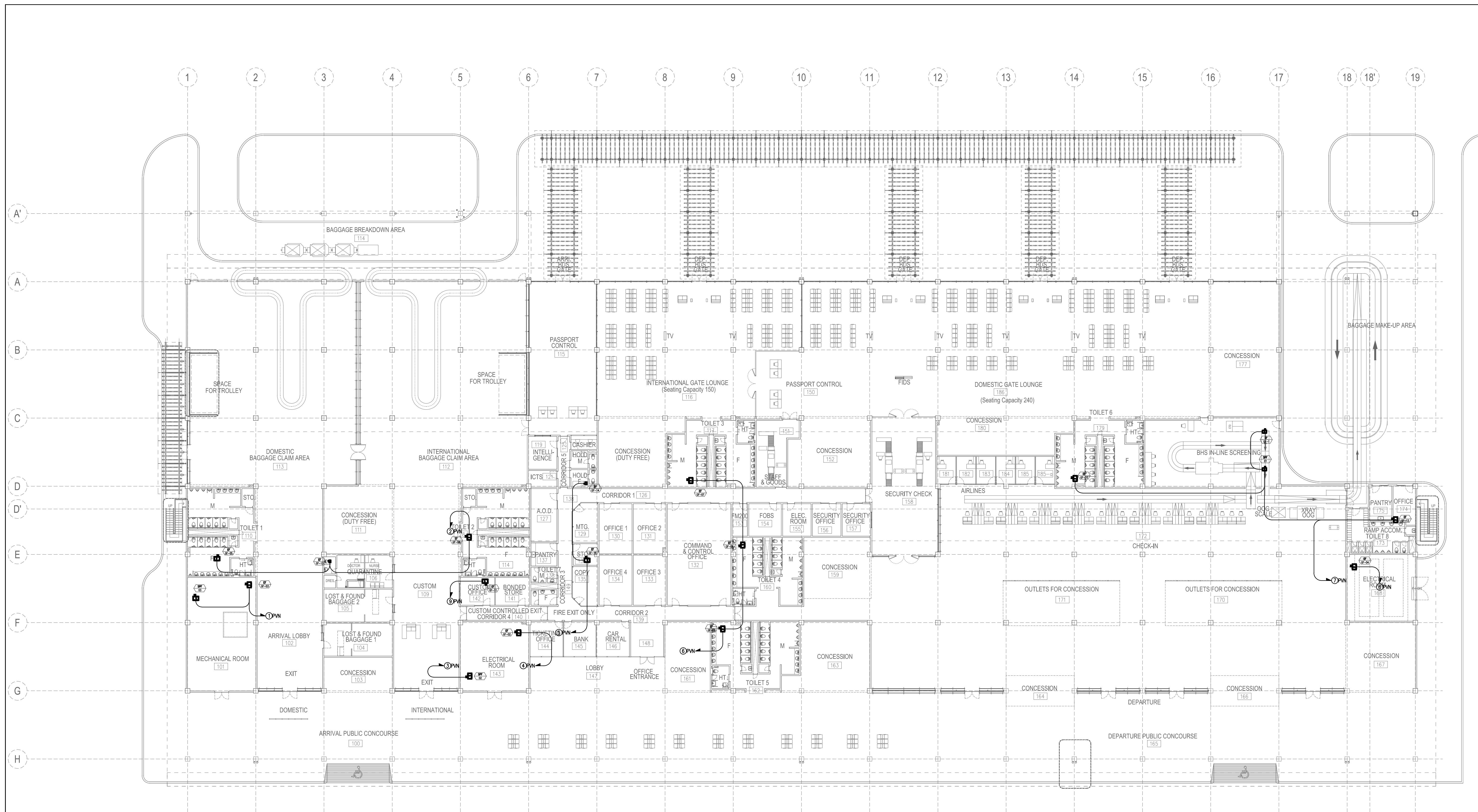
APPROVED:
JULIANITO G. BUCAYAN, JR.
 Undersecretary
 for Project Implementation, DOTC

PROJECT TITLE:
NEW BOHOL AIRPORT CONSTRUCTION AND SUSTAINABLE ENVIRONMENT PROTECTION PROJECT
 LOCATION: MUNICIPALITY OF PANGLAO, PROVINCE OF BOHOL, PHILIPPINES

DATE	INDEX	AMENDMENTS	Prepared by	Checked by	Validated by
JUNE 2013			WIM	HC	

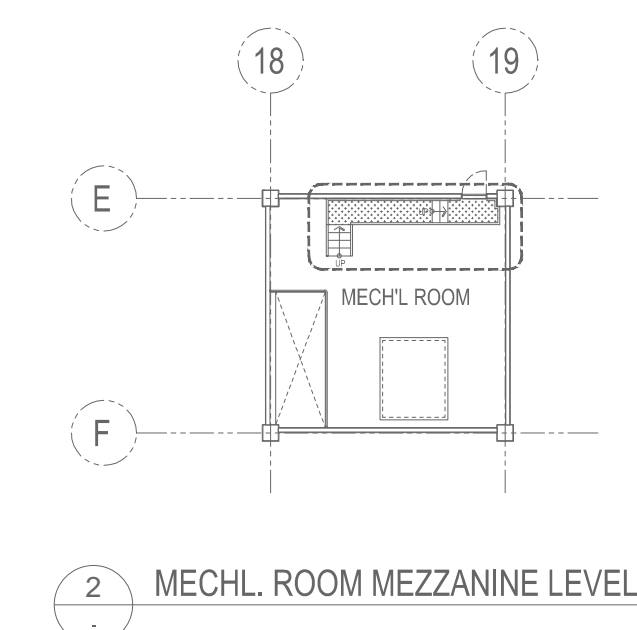
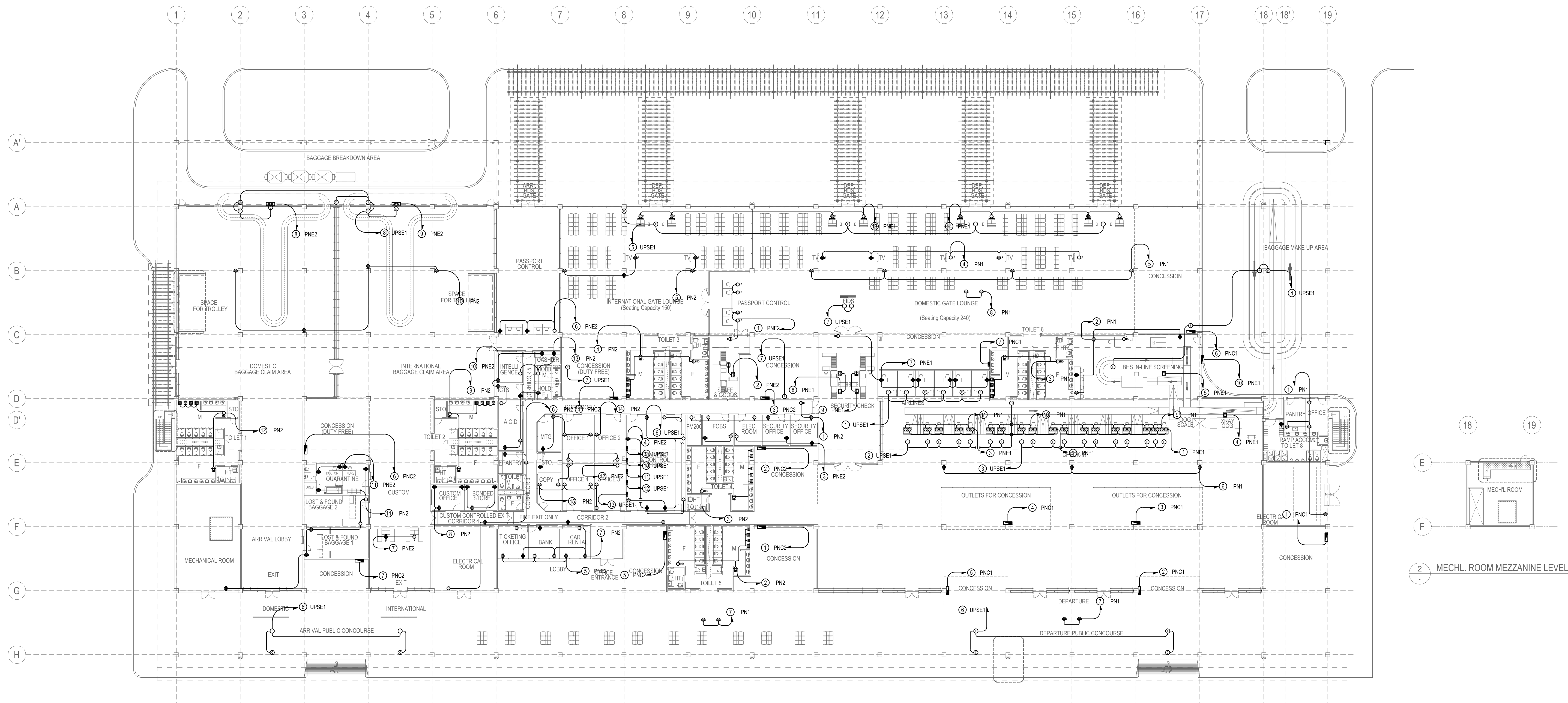
SHEET CONTENTS:
 COMPONENT-4
 BUILDING WORKS (B)
 SUBCOMPONENT-4-1
 (B1) Passenger Terminal Building
 ELECTRICAL
 POWER FEEDER LAYOUT2

SHEET NO:
B1-6100-05
 DRAWING SCALE:
 AS SHOWN



1 GROUND FLOOR VENTILATION LAYOUT
 M0-00 SCALE 1:250M

	PREPARED BY: TEODORO N. PAMATMAT <small>PROF. ELECTRICAL ENGINEER PIR. 1403773</small> <small>REG. NO.: 1927 DATE: 1-04-13</small> <small>TIN: 119-747-900 PLACE: MANILA</small>	RECOMMENDING APPROVAL: ILDEFONSO T. PATDU, JR. <small>Assistant Secretary for Project Implementation, DOTC</small>	APPROVED: JULIANITO G. BUCAYAN, JR. <small>Undersecretary for Project Implementation, DOTC</small>	PROJECT TITLE: NEW BOHOL AIRPORT CONSTRUCTION AND SUSTAINABLE ENVIRONMENT PROTECTION PROJECT LOCATION: MUNICIPALITY OF PANGLAO, PROVINCE OF BOHOL, PHILIPPINES	SHEET CONTENTS: COMPONENT-4 BUILDING WORKS (B) SUBCOMPONENT-4-1 (B1) Passenger Terminal Building ELECTRICAL POWER FEEDER LAYOUT3	SHEET NO: B1-6100-06 DRAWING SCALE: AS SHOWN
	JICA DESIGN CONSULTANT JOINT VENTURE JAC JAPAN AIRPORT CONSULTANTS, INC. NIPPON KOEI CO., LTD. NIS CONSULTANTS CO., LTD.	TADASHI AOI <small>Team Leader</small>	ILDEFONSO T. PATDU, JR. <small>Assistant Secretary for Project Implementation, DOTC</small>	JULIANITO G. BUCAYAN, JR. <small>Undersecretary for Project Implementation, DOTC</small>	DATE: JUNE 2013 INDEX: _____ AMENDMENTS: _____ Prepared by: WIM Checked by: HC Validated by: _____	



LEGEND	
- Supply to Conveyor (3 phase)	⊞
- HD - Hand Dryer	⊞
- Duplex C.O	⊞
- Floor Outlet	⊞
- Access Door Power Supply	⊞
- Urinal Power Supply	⊞
- Outlet for FIDs	⊞
- Digital Slave Clock	⊞
- Supply/Outlet for X ray and pWTM	⊞
- Power Supply Box Auxiliaries	⊞
PNC - Concession Panelboard	
PN - Panelboard Normal	
PNE - Panelboard Normal and Emergency	
UPSE - Panelboard under UPS and Emergency Power	

	PREPARED BY: TEODORO N. PAMATMAT <small>PROF. ELECTRICAL ENGINEER PIR. 1403773</small> <small>REG. NO.: 1927 DATE: 1-04-13</small> <small>TIN. 119-747-900 PLACE: MANILA</small>	RECOMMENDING APPROVAL: ILDEFONSO T. PATDU, JR. <small>Assistant Secretary for Project Implementation, DOTC</small>	APPROVED: JULIANITO G. BUCAYAN, JR. <small>Undersecretary for Project Implementation, DOTC</small>	PROJECT TITLE: NEW BOHOL AIRPORT CONSTRUCTION AND SUSTAINABLE ENVIRONMENT PROTECTION PROJECT	LOCATION: MUNICIPALITY OF PANGLAO, PROVINCE OF BOHOL, PHILIPPINES	SHEET CONTENTS: COMPONENT-4 BUILDING WORKS (B) SUBCOMPONENT-4-1 (B1) Passenger Terminal Building ELECTRICAL RECEPTACLE LAYOUT	SHEET NO: B1-6200-01 DRAWING SCALE: AS SHOWN
	JICA DESIGN CONSULTANT JOINT VENTURE JAC JAPAN AIRPORT CONSULTANTS, INC.	TADASHI AOI <small>Team Leader</small>	JULIANITO G. BUCAYAN, JR. <small>Undersecretary for Project Implementation, DOTC</small>	DATE: JUNE 2013 INDEX:	AMENDMENTS:	Prepared by: WIM Checked by: HC Validated by:	