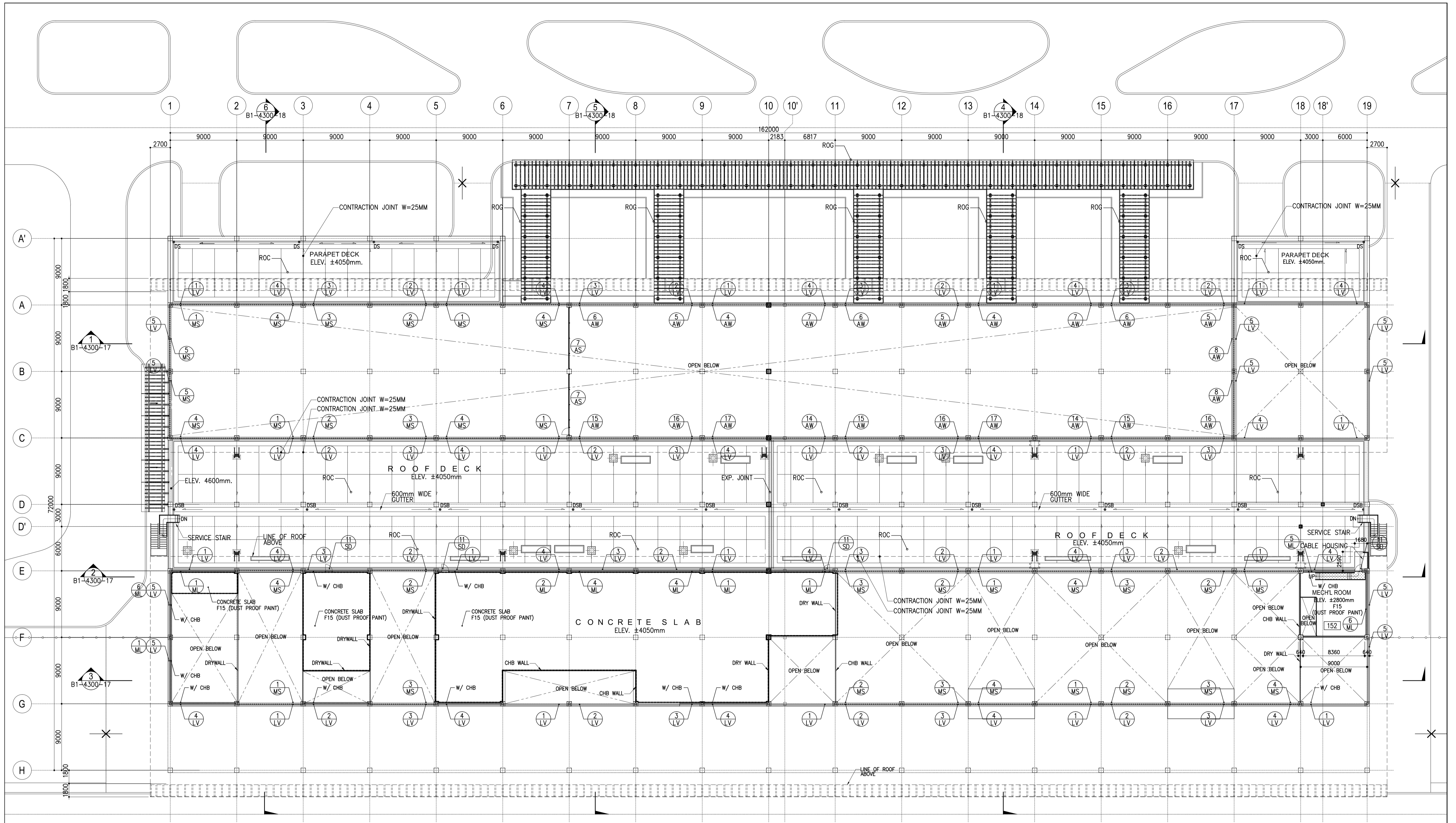
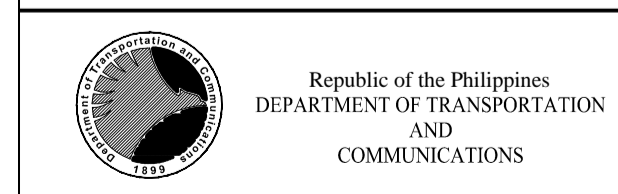


	PREPARED BY: <b>WILLIAM I. MALLONGA</b> <small>PROF. Architect PIR. 3811137 RES. NO. 4623 DATE: MAY 9, 2013 TEL. 159-564-198 PLACE: MANILA CITY</small>	RECOMMENDING APPROVAL: <b>ILDEFONSO T. PATDU, JR.</b> <small>Assistant Secretary for Project Implementation, DOTC</small>	APPROVED: <b>JULIANITO G. BUCAYAN, JR.</b> <small>Undersecretary for Project Implementation, DOTC</small>	PROJECT TITLE: <b>NEW BOHOL AIRPORT CONSTRUCTION AND SUSTAINABLE ENVIRONMENT PROTECTION PROJECT</b>	LOCATION: MUNICIPALITY OF PANGLAO, PROVINCE OF BOHOL, PHILIPPINES	SHEET CONTENTS: COMPONENT-4 BUILDING WORKS (B) SUBCOMPONENT -4-1 (B1) PASSENGER TERMINAL BUILDING ARCHITECTURAL SCHEDULE OF DOORS & WINDOWS 2-2	SHEET NO: <b>B1-4300-68</b>
	JICA DESIGN CONSULTANT JOINT VENTURE	TADASHI AOI <small>Team Leader</small>	ILDEFONSO T. PATDU, JR. <small>Assistant Secretary for Project Implementation, DOTC</small>	JULIANITO G. BUCAYAN, JR. <small>Undersecretary for Project Implementation, DOTC</small>	DATE: JUNE 2013 INDEX:	AMENDMENTS:	Prepared by: WIM Checked by: IC Validated by:



1 UPPER FLOOR PLAN WINDOW SCHEDULE  
SCALE: 1:250 MTS.



JICA DESIGN CONSULTANT JOINT VENTURE  
**JAC** JAPAN AIRPORT CONSULTANTS, INC.  
**NK** NIPPON KOEI CO., LTD.  
**NIS** NIS CONSULTANTS CO., LTD.

PREPARED BY:  
**WILLIAM I. MALLONGA**  
 ARCHITECT  
 REG. NO. 4623  
 TEL. 129-564-198  
 PIR. 3911137  
 DATE: MAY 9, 2013  
 PLACE: MANILA CITY

RECOMMENDING APPROVAL:  
**ILDEFONSO T. PATDU, JR.**  
 Assistant Secretary  
 for Project Implementation, DOTC

APPROVED:  
**JULIANITO G. BUCAYAN, JR.**  
 Undersecretary  
 for Project Implementation, DOTC

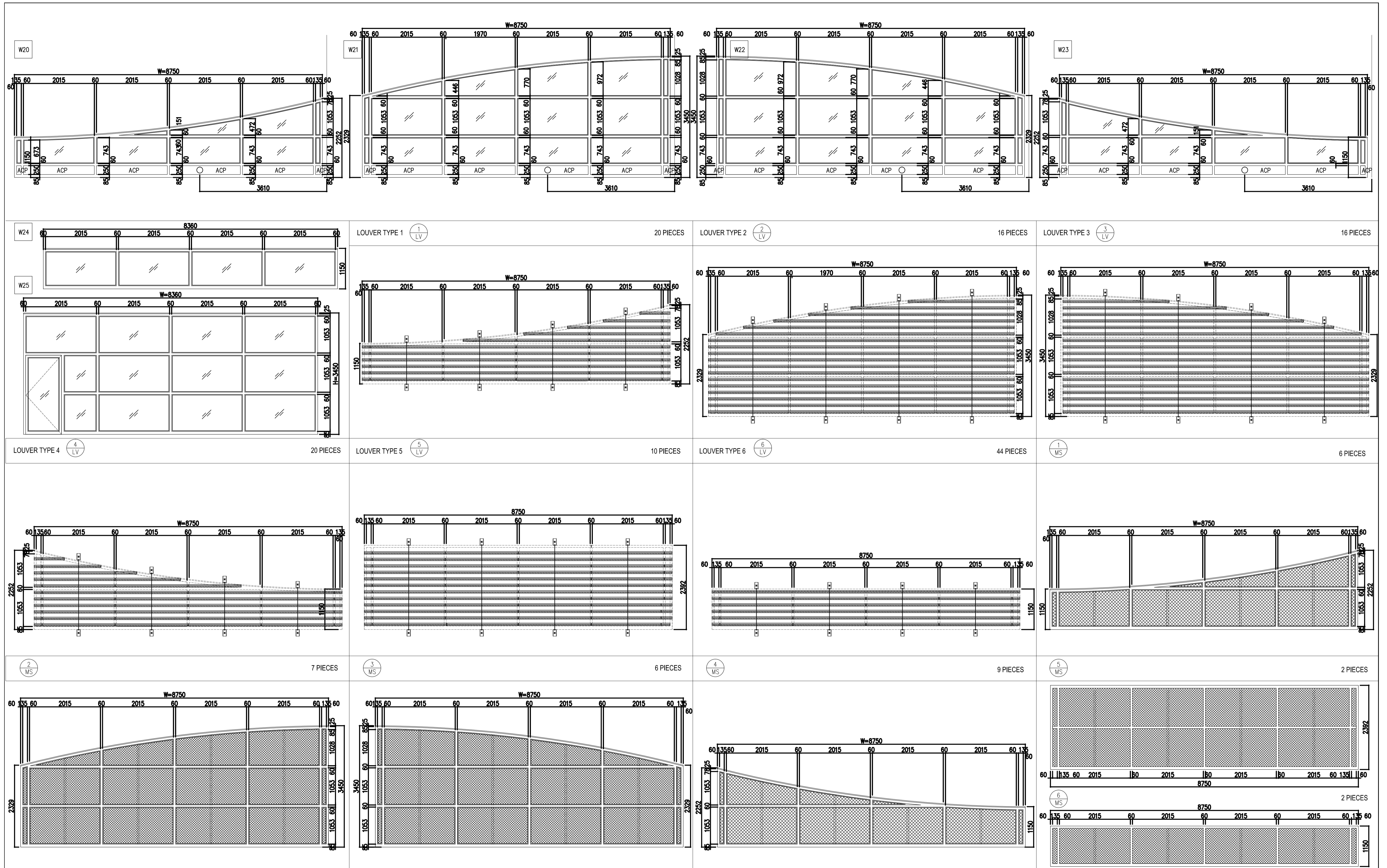
PROJECT TITLE:  
**NEW BOHOL AIRPORT CONSTRUCTION AND SUSTAINABLE ENVIRONMENT PROTECTION PROJECT**

LOCATION: MUNICIPALITY OF PANGLAO, PROVINCE OF BOHOL, PHILIPPINES

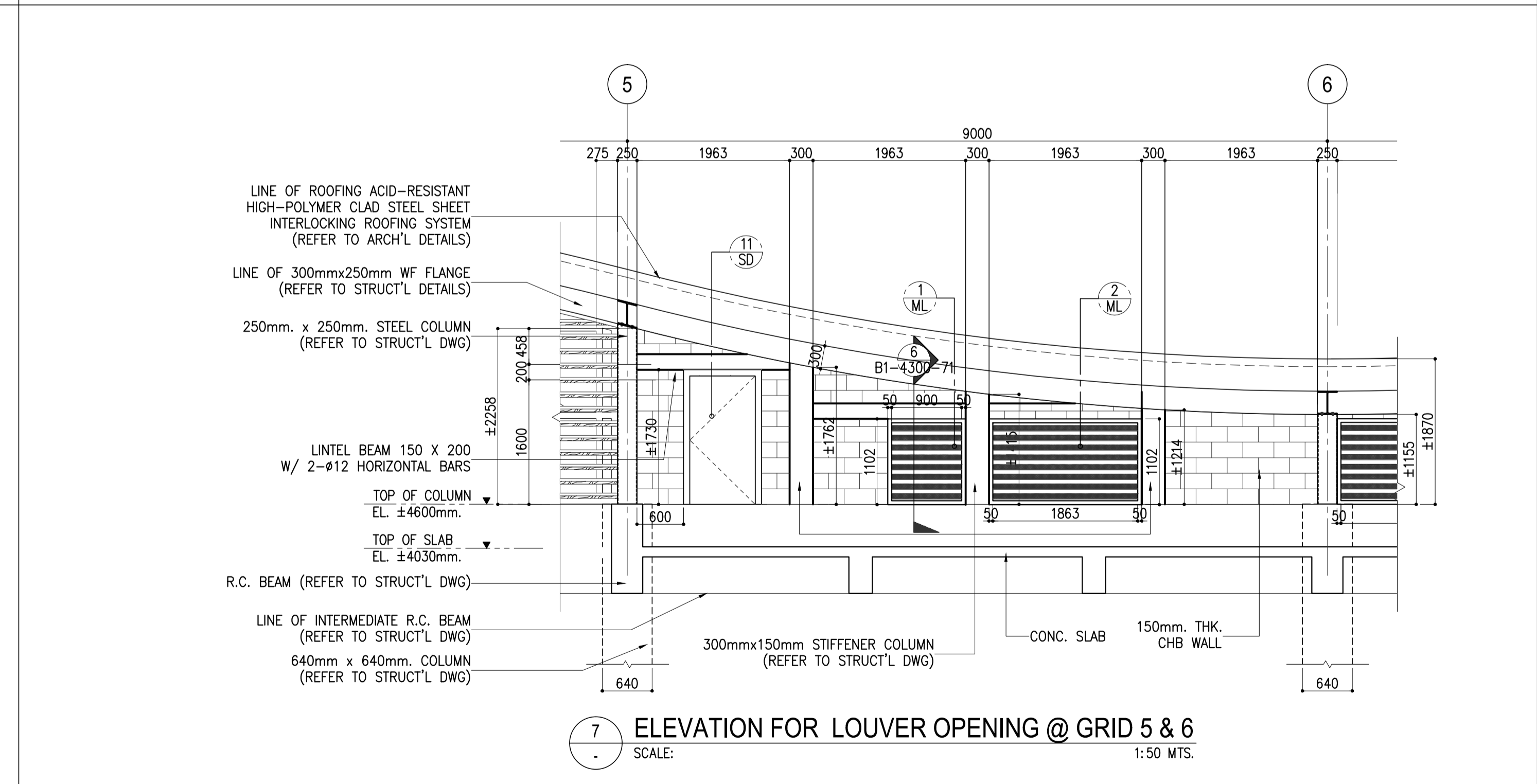
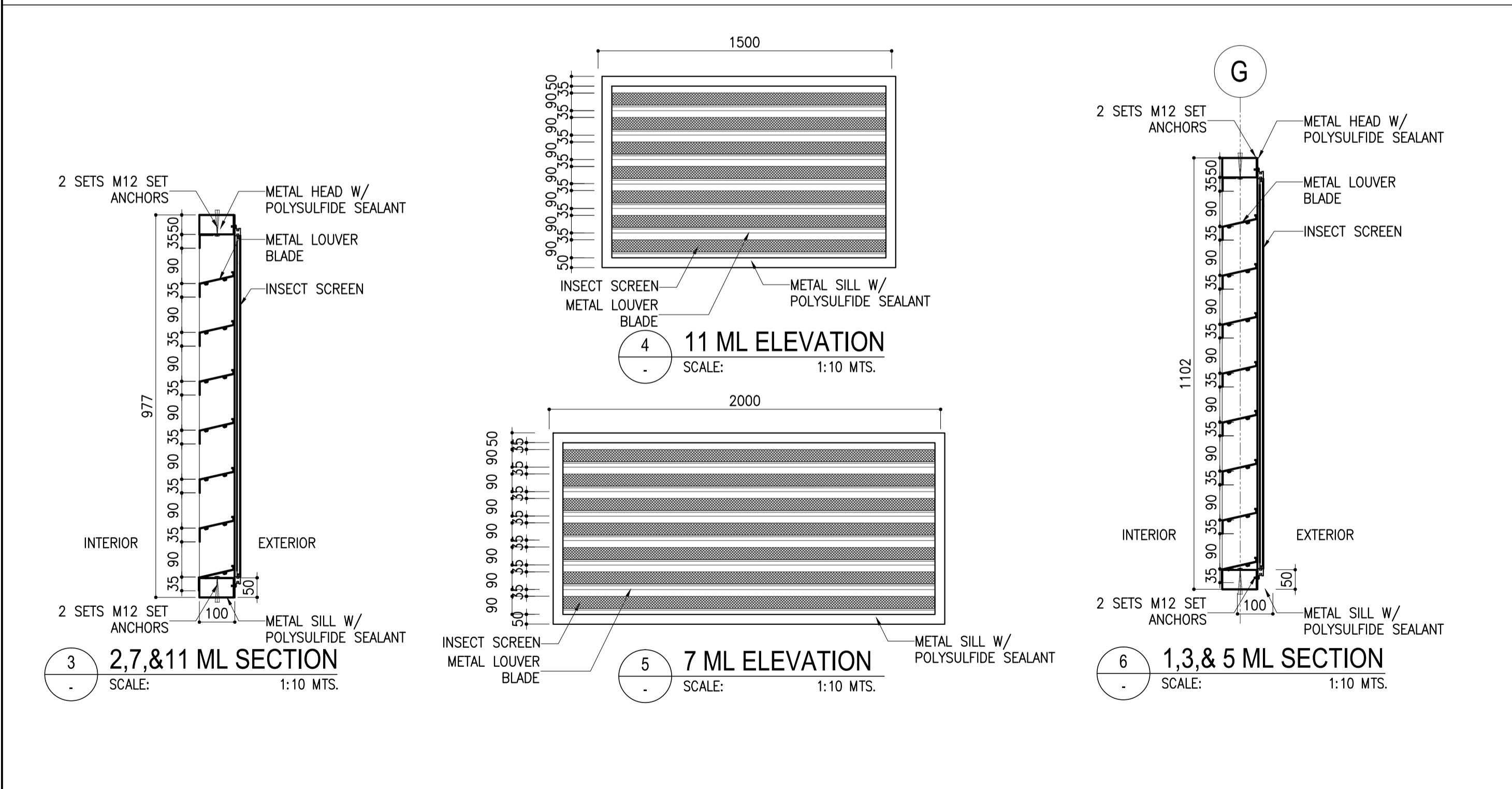
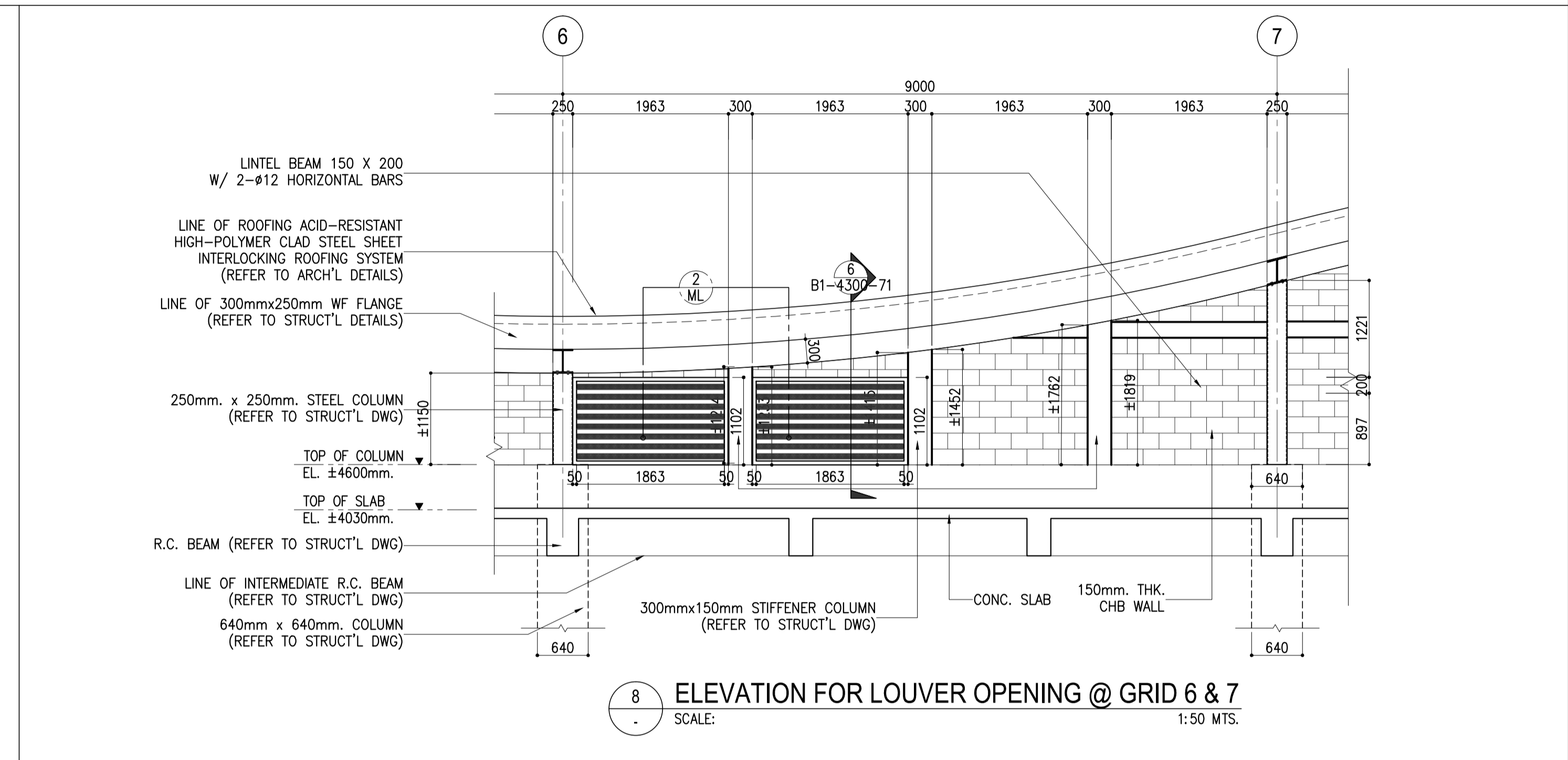
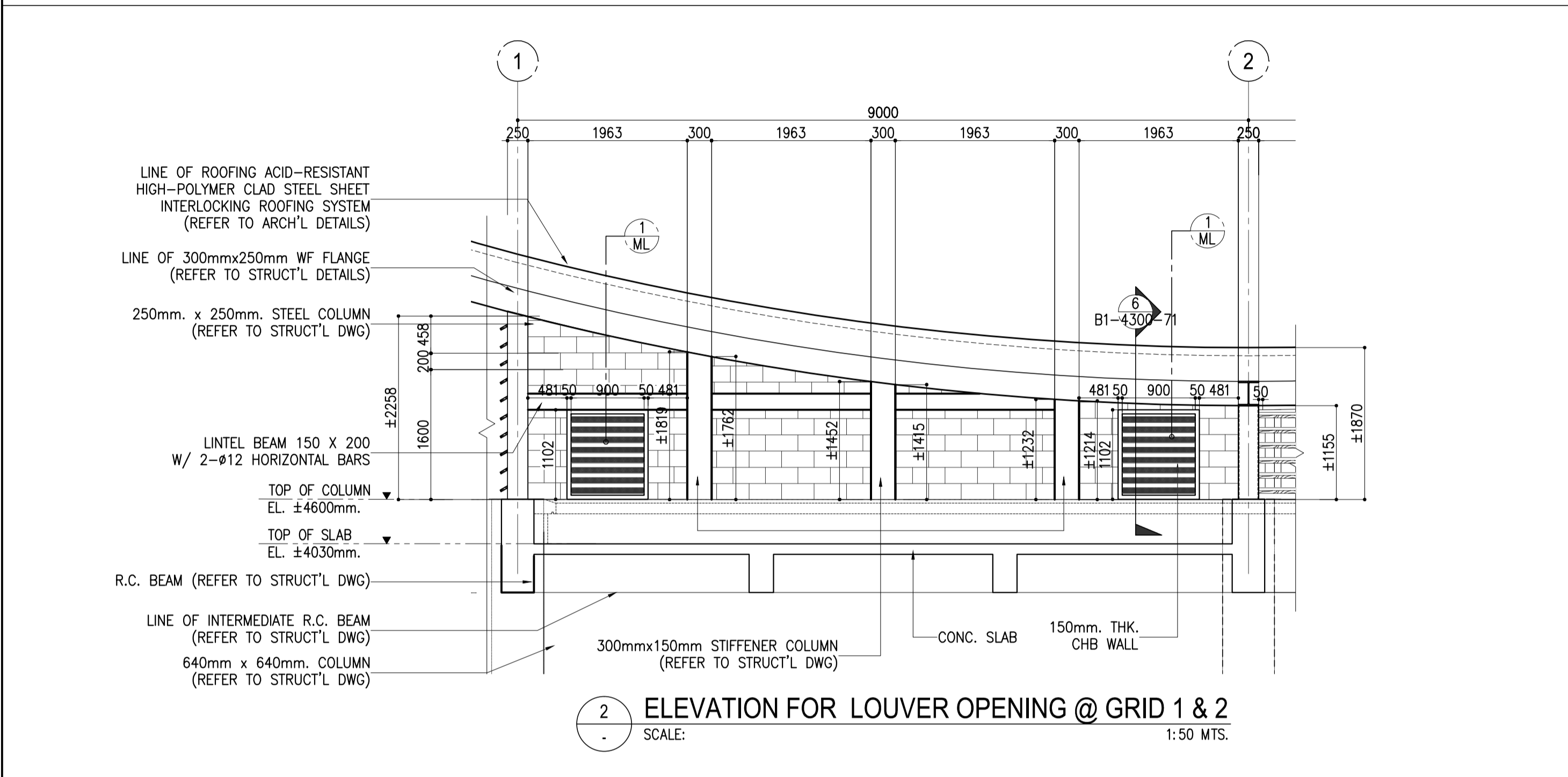
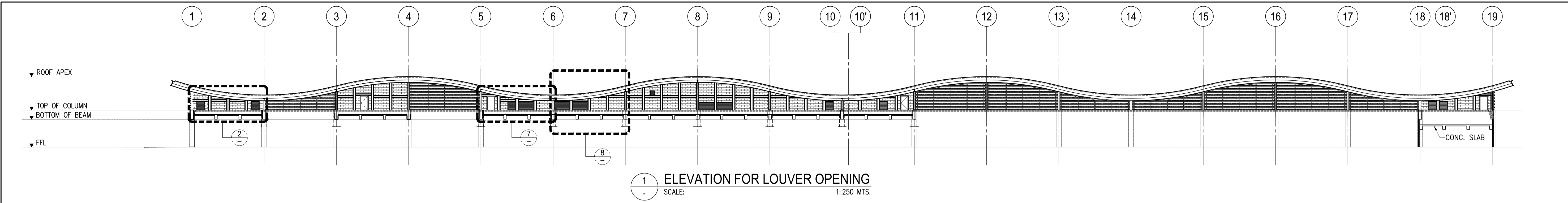
DATE	INDEX	AMENDMENTS	Prepared by	Checked by	Validated by
JUNE 2013			WIM	HC	

SHEET CONTENTS:  
 COMPONENT-4 BUILDING WORKS (B)  
 SUBCOMPONENT -4-1  
 (B1) PASSENGER TERMINAL BUILDING  
 ARCHITECTURAL  
 UPPER FLOOR WINDOW SCHEDULE

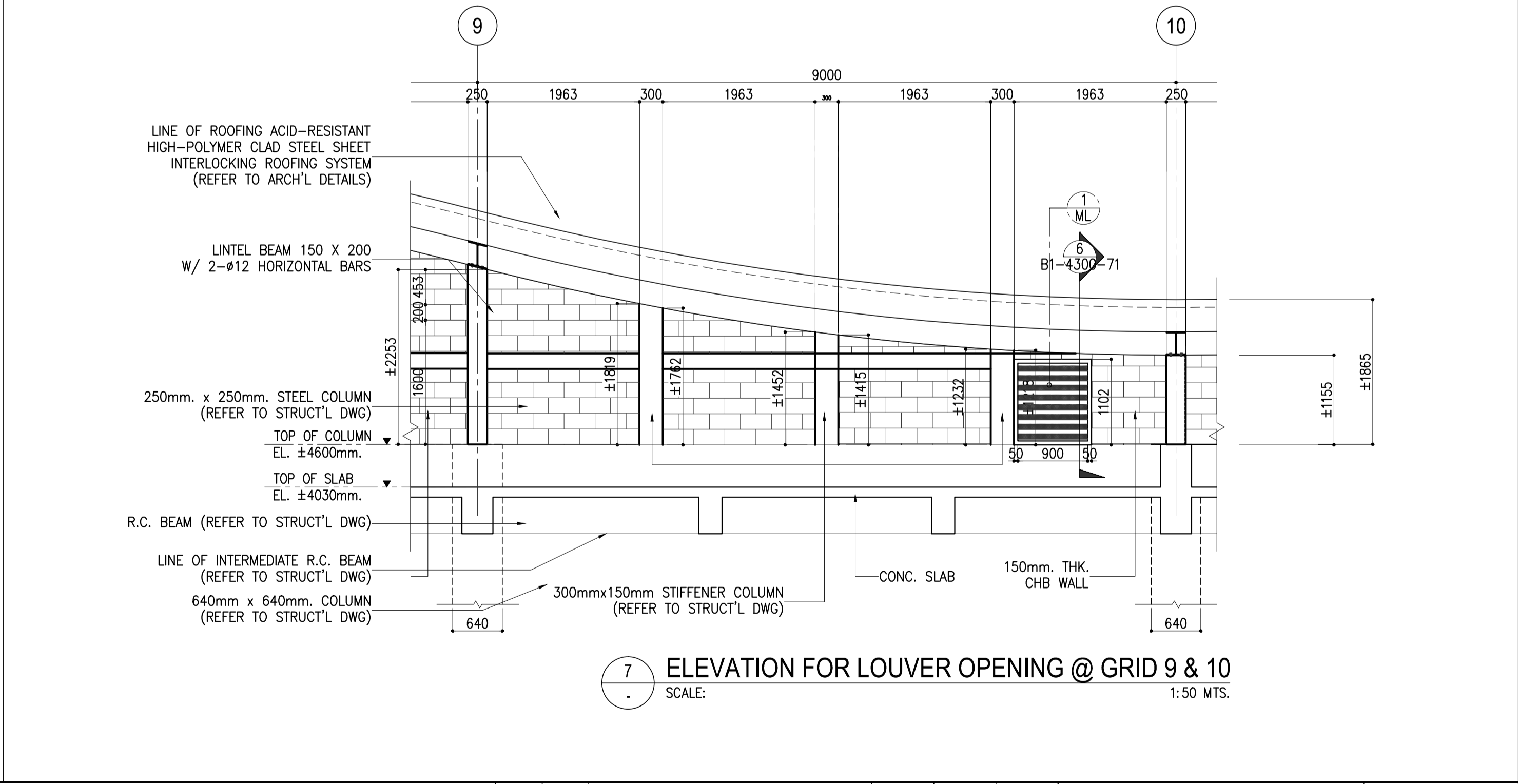
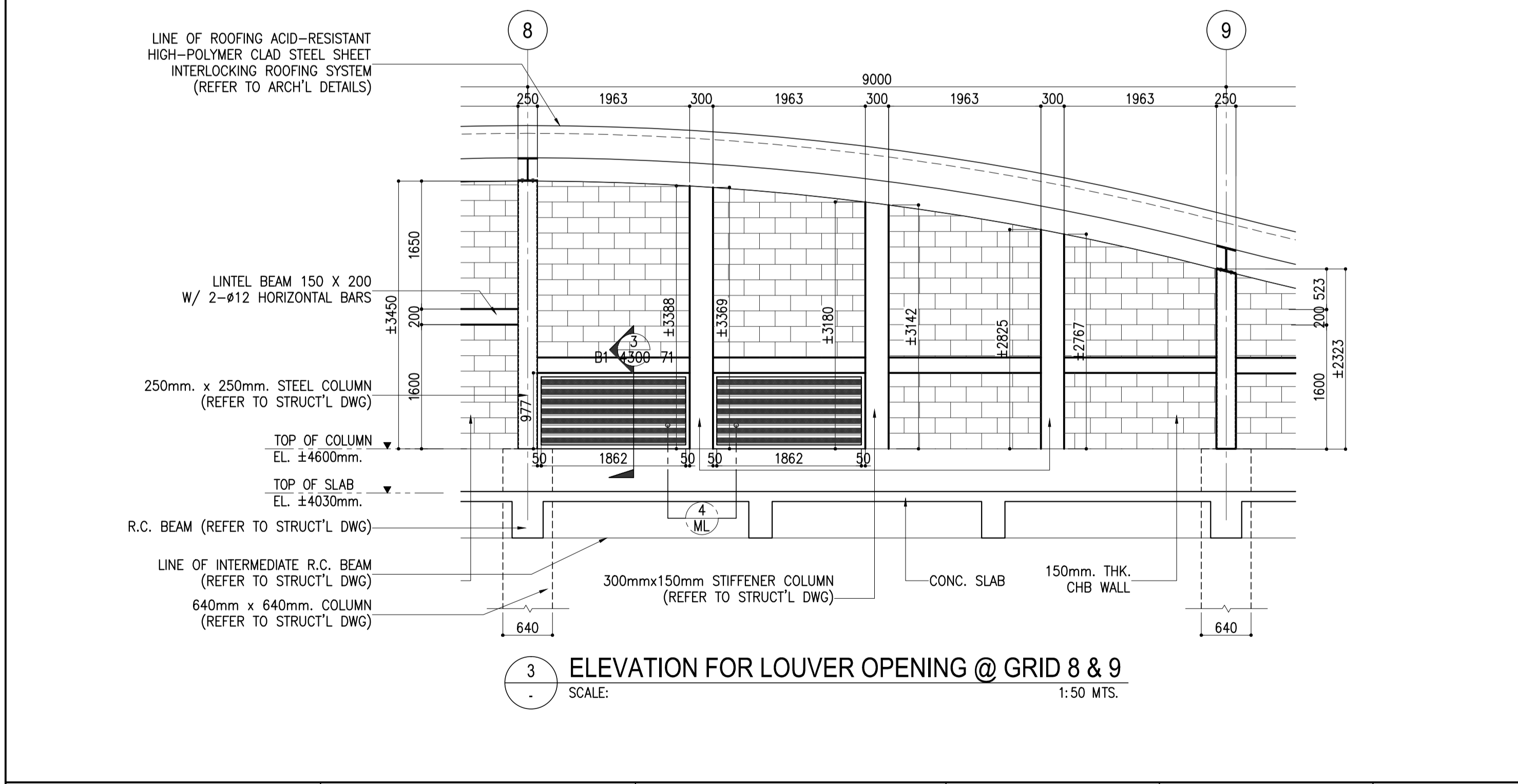
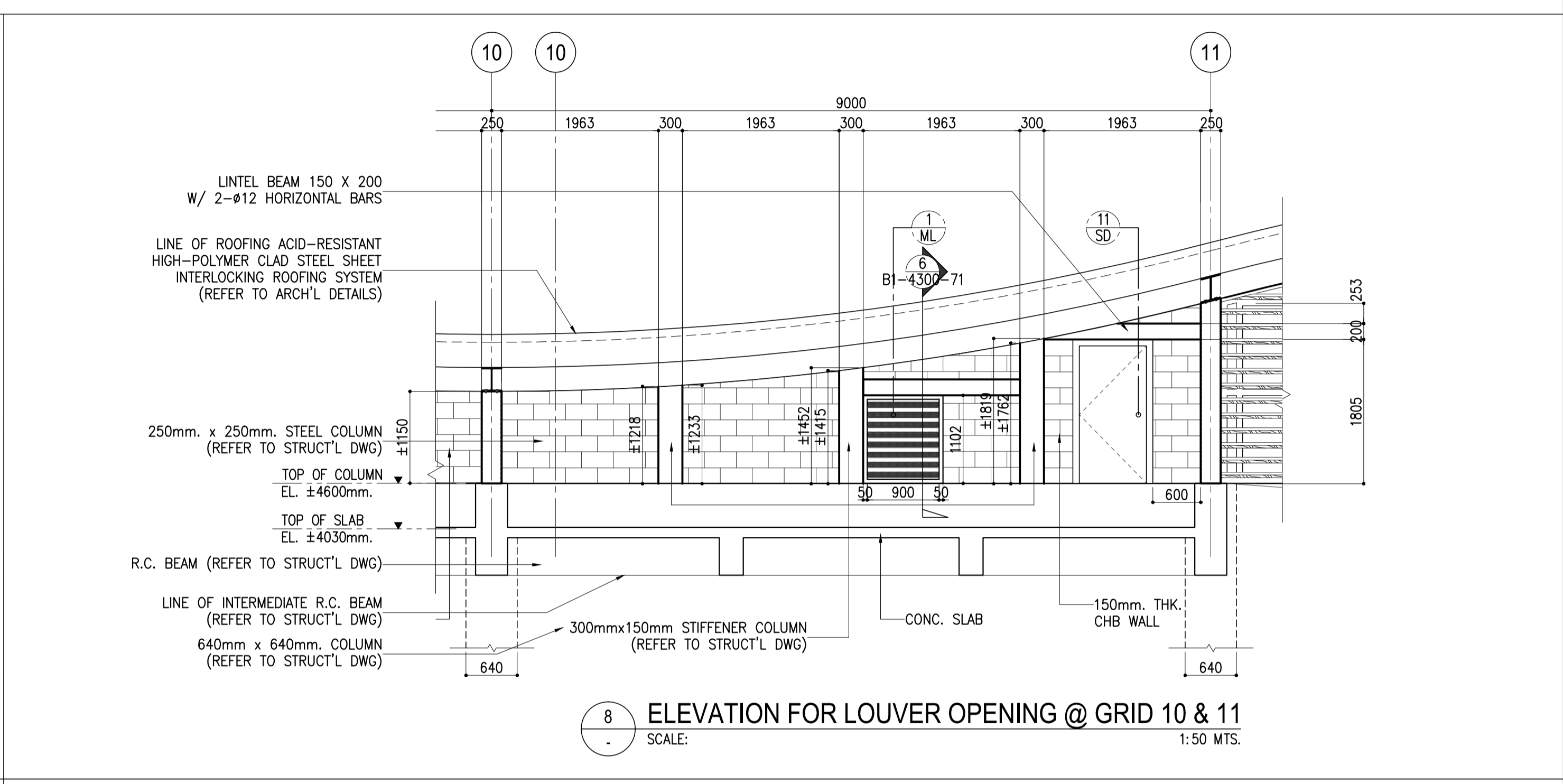
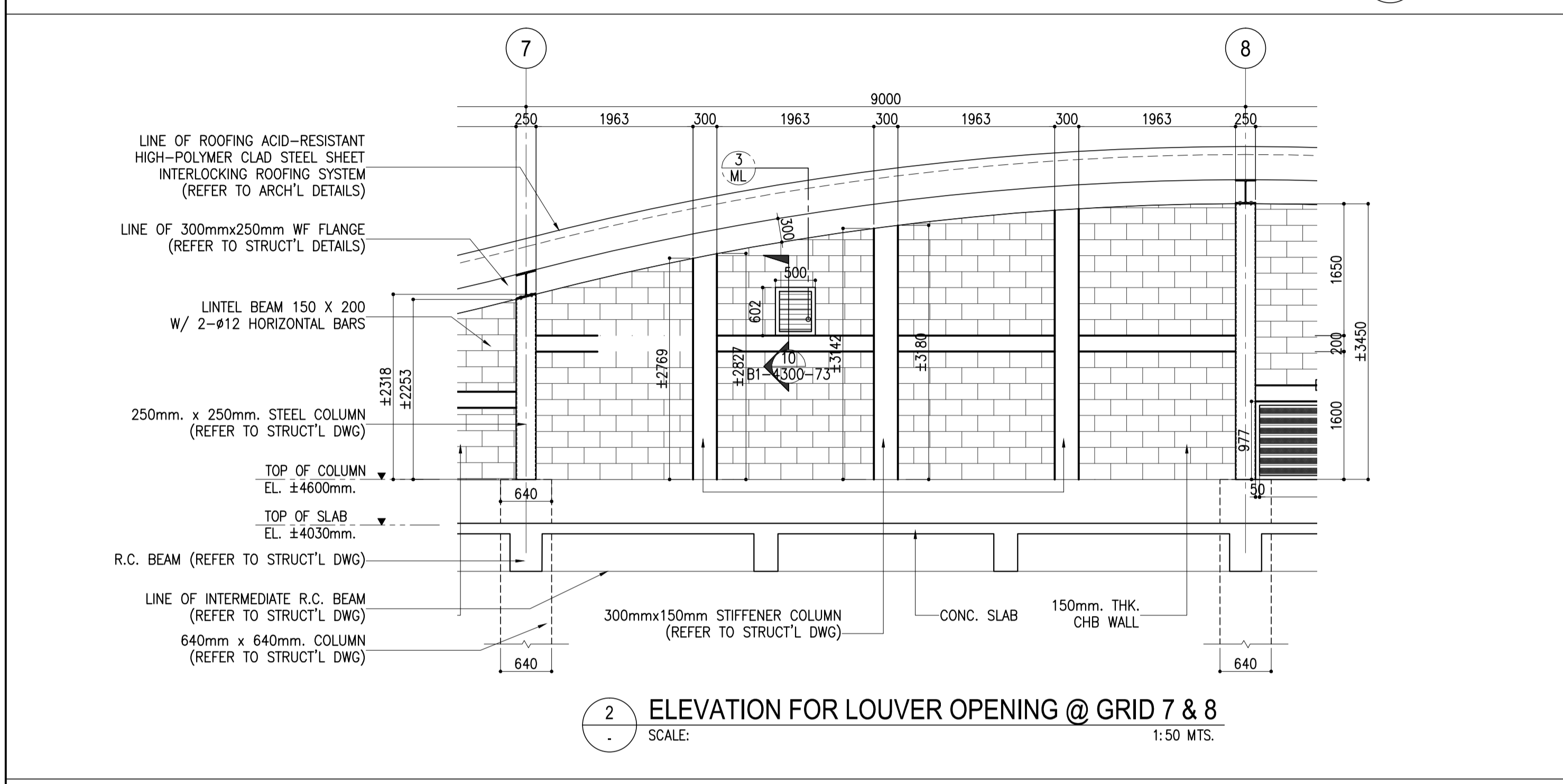
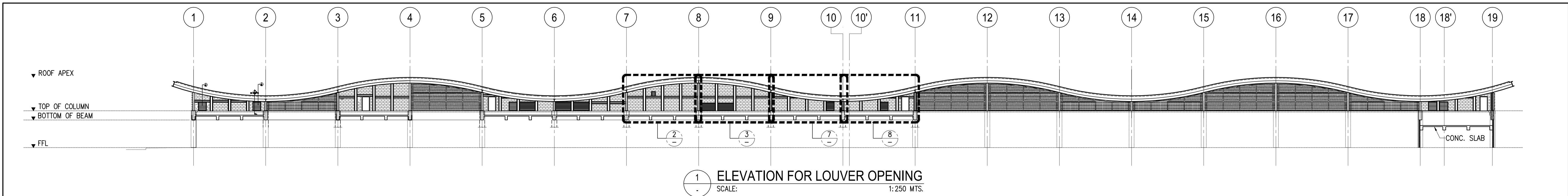
SHEET NO:  
**B1-4300-69**  
 DRAWING SCALE:  
 1:250 MTS.



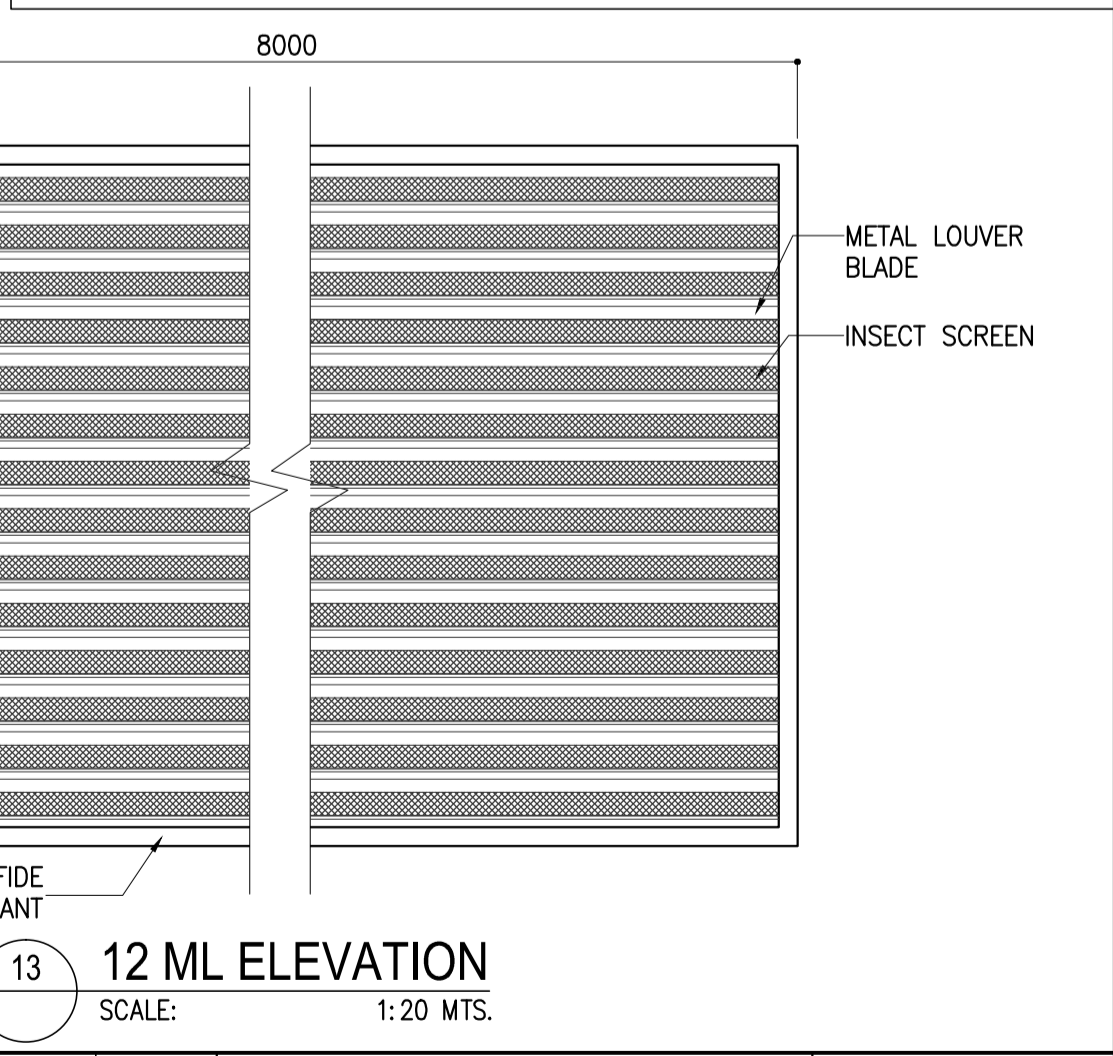
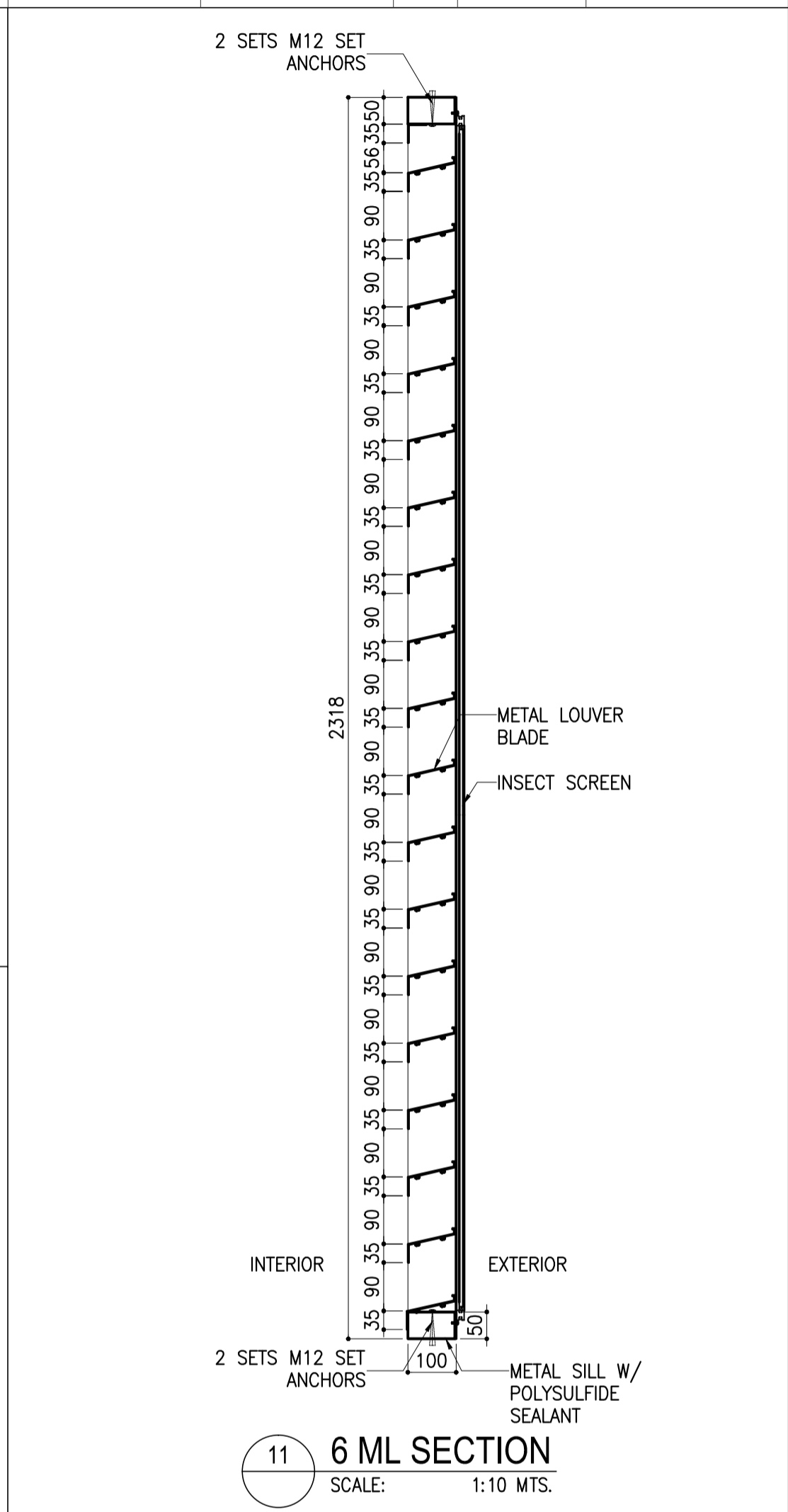
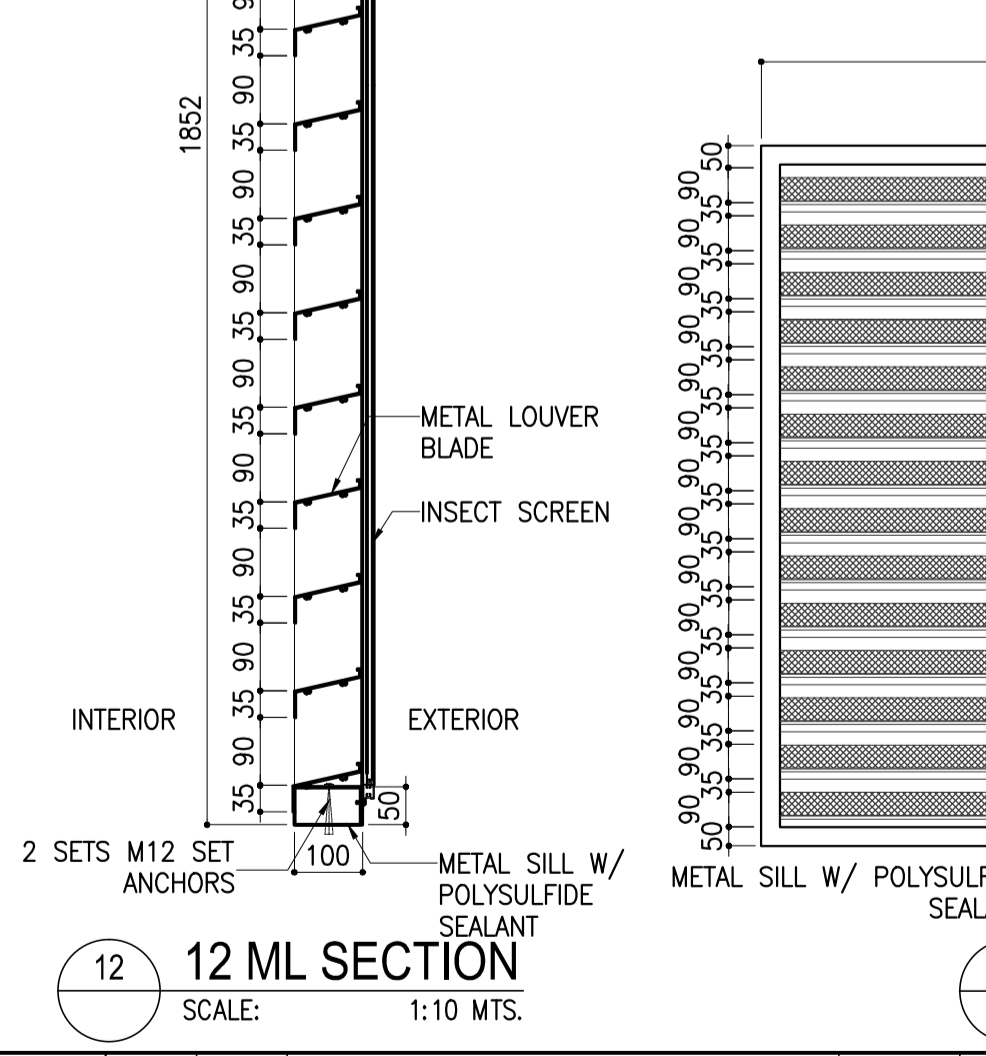
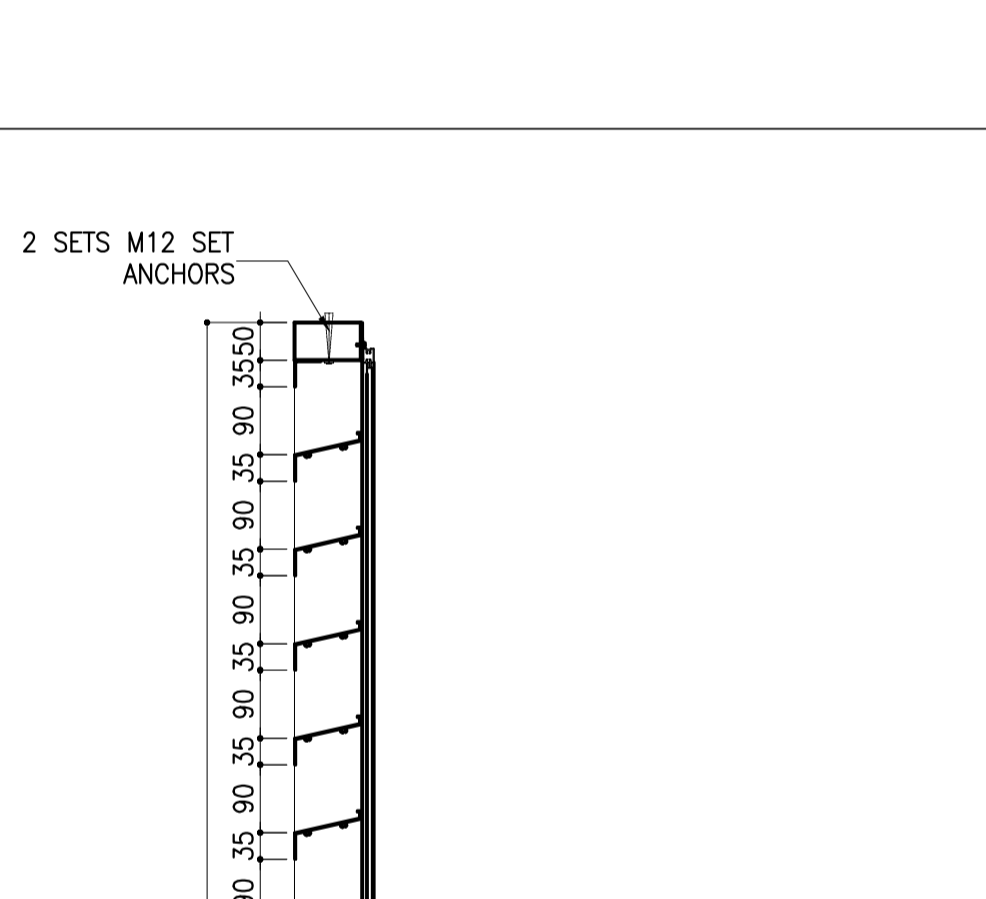
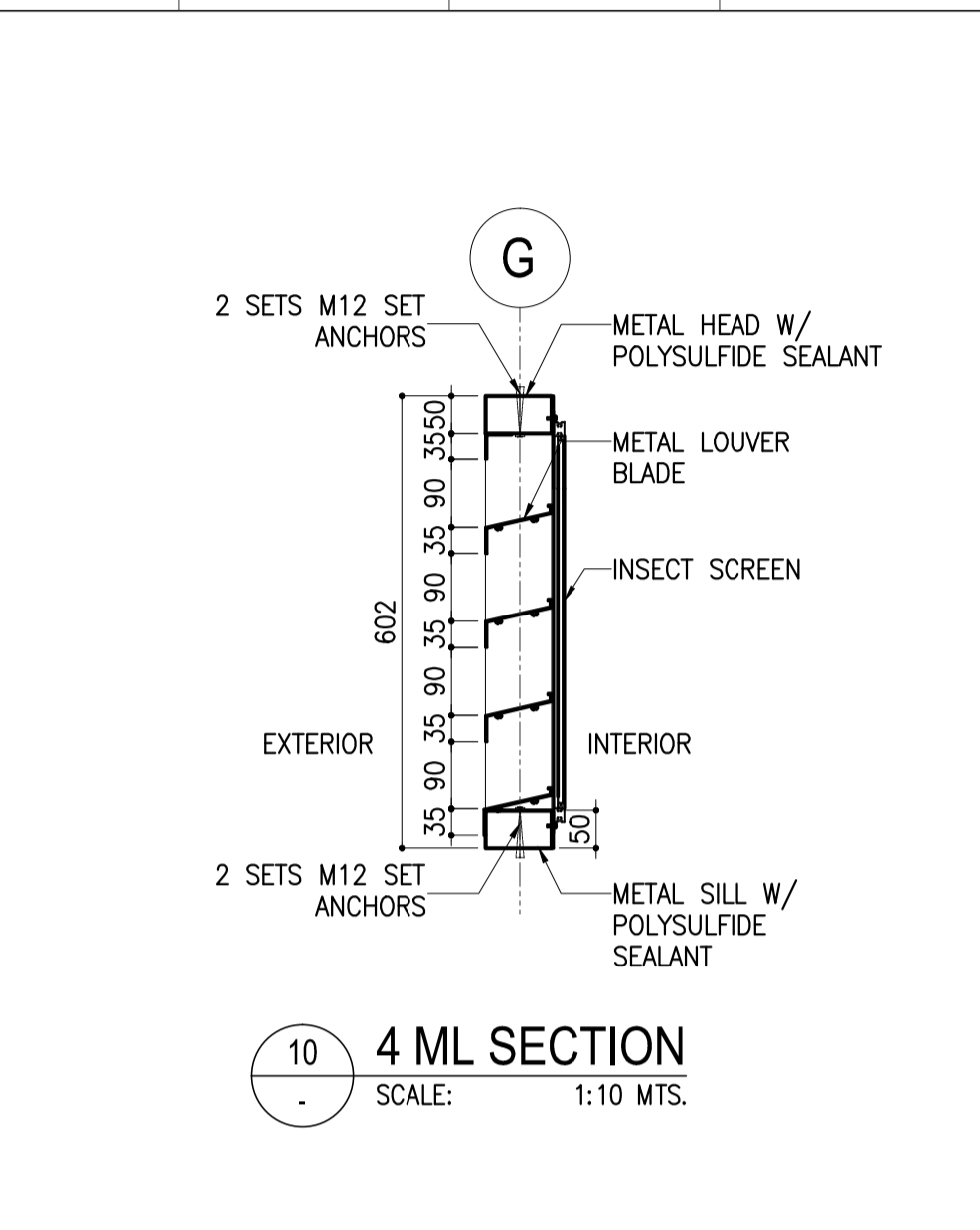
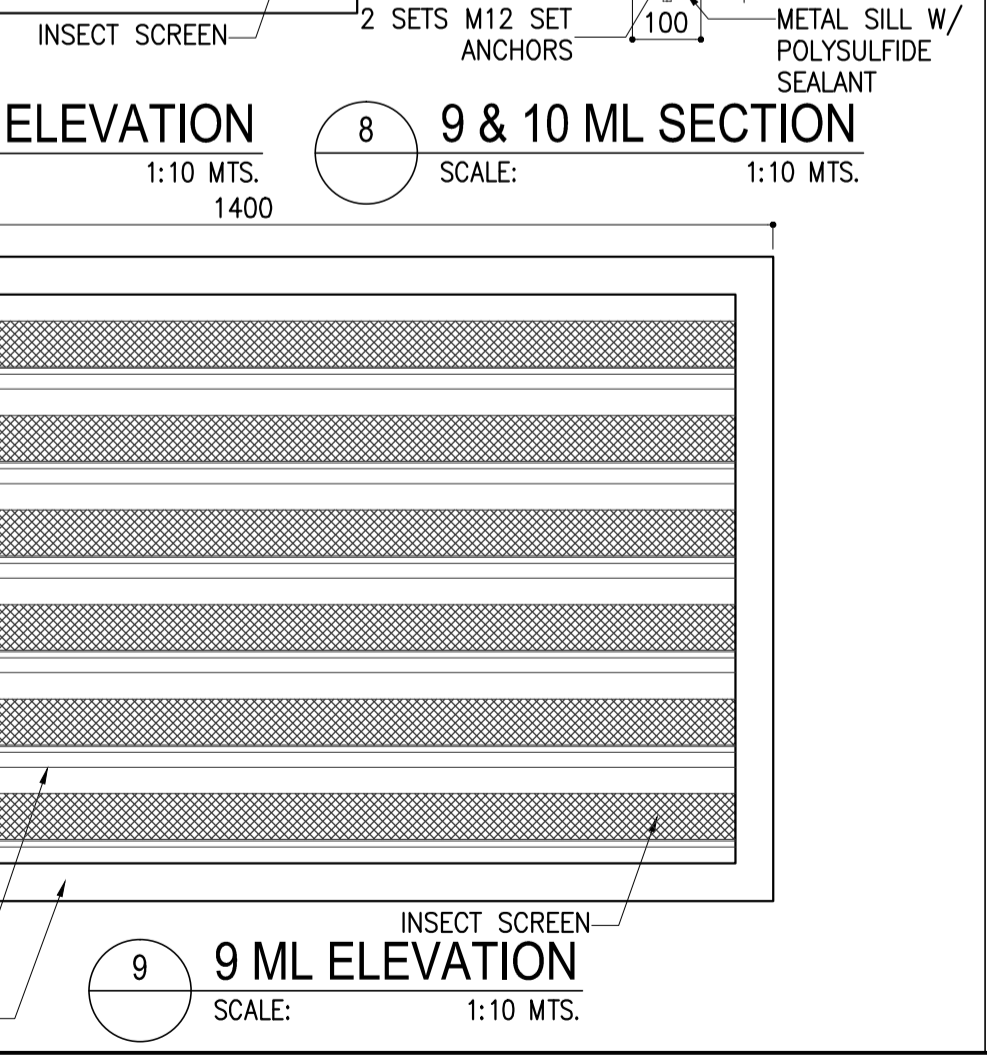
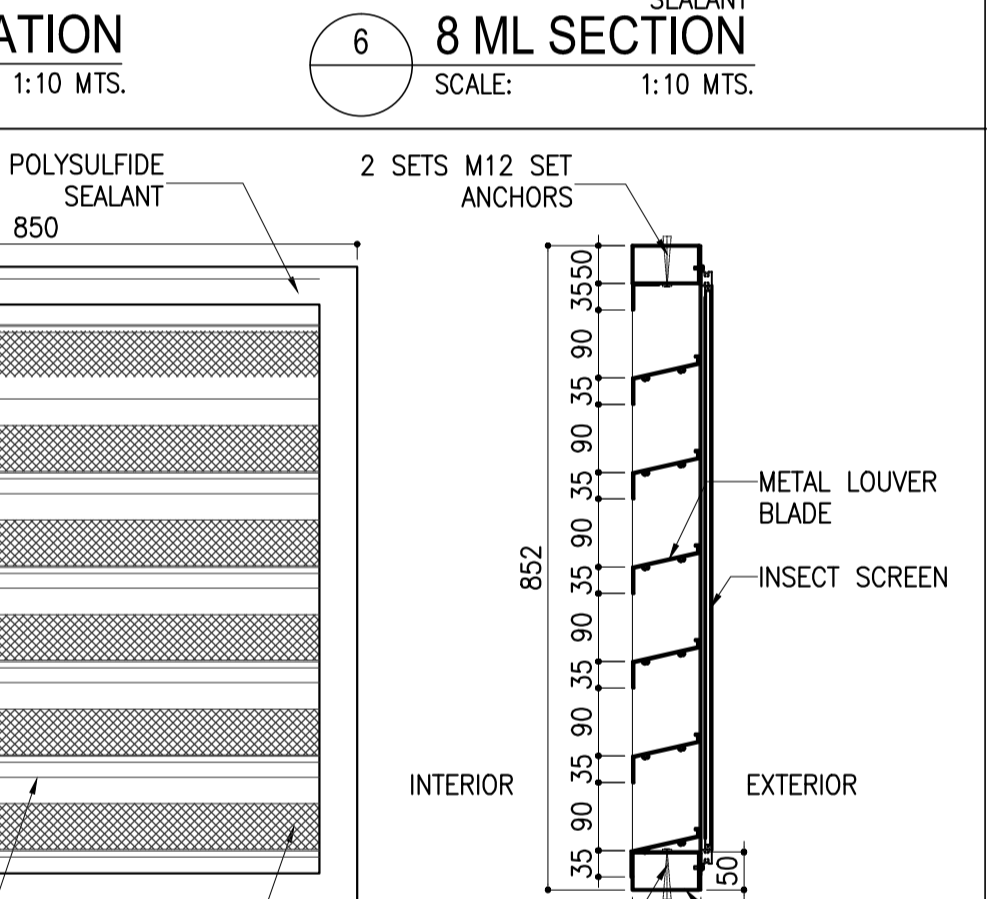
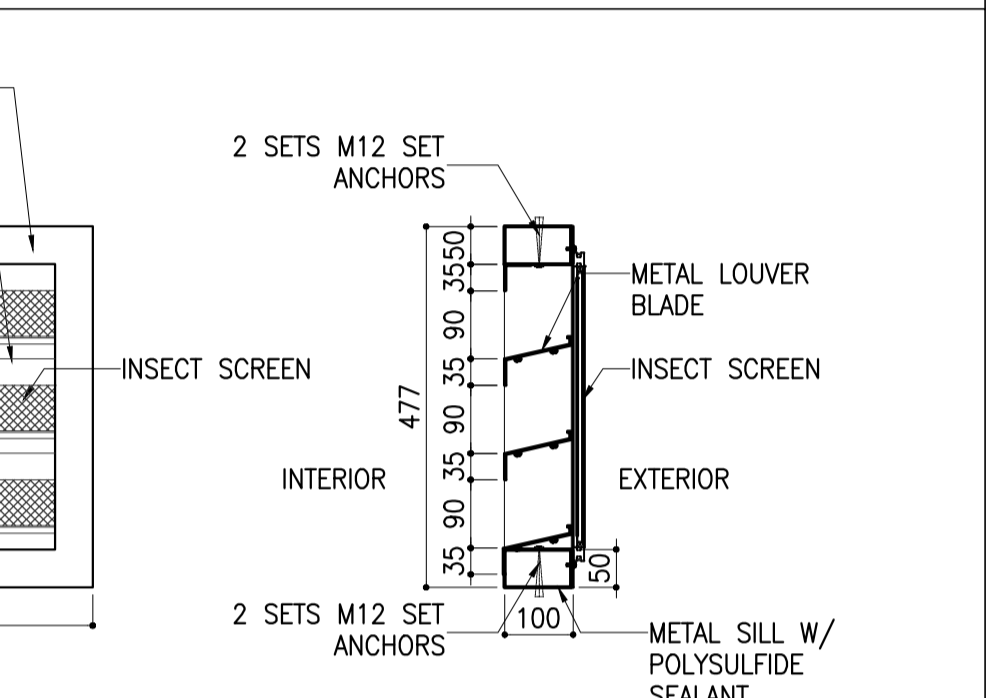
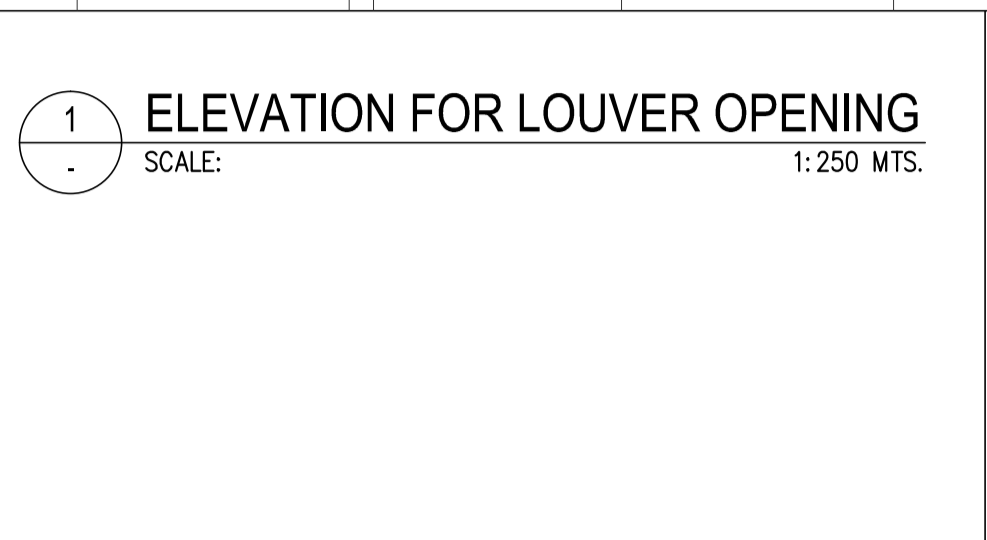
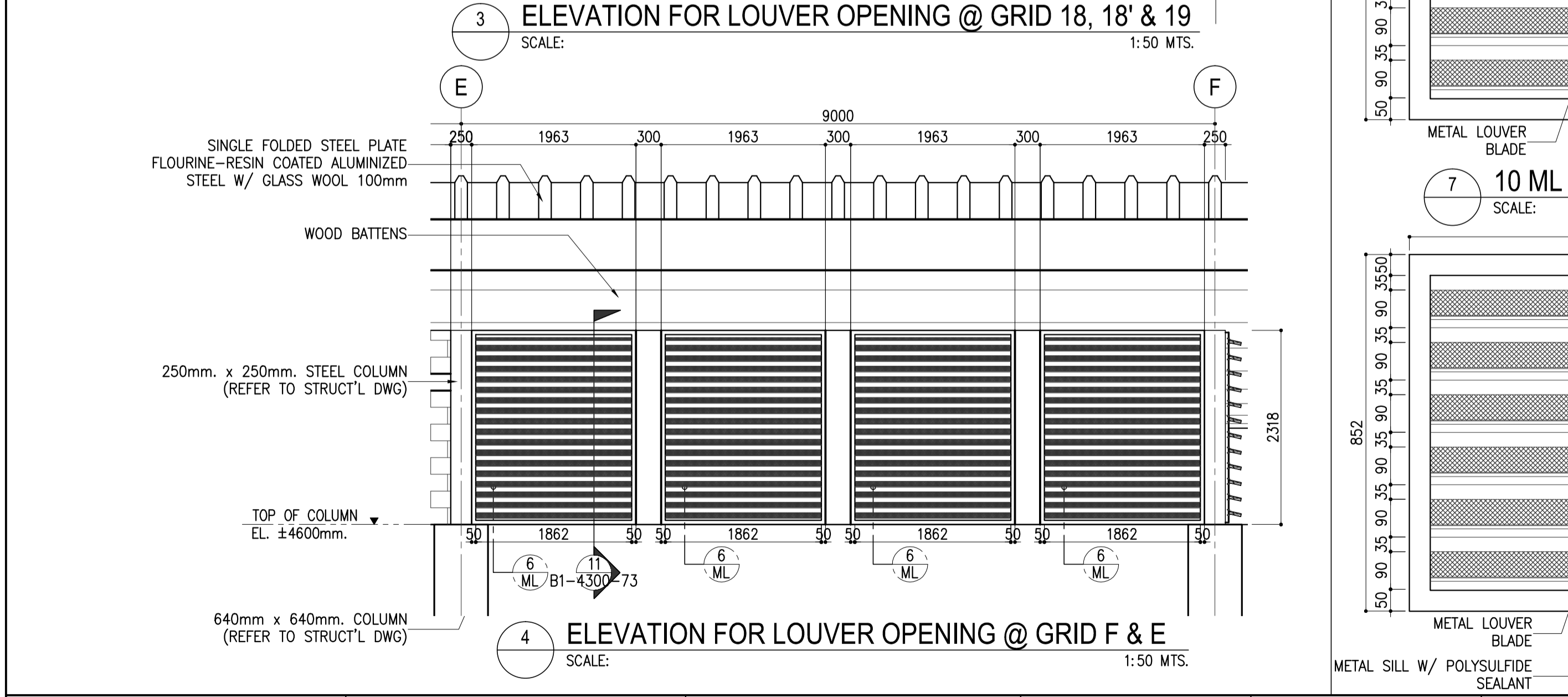
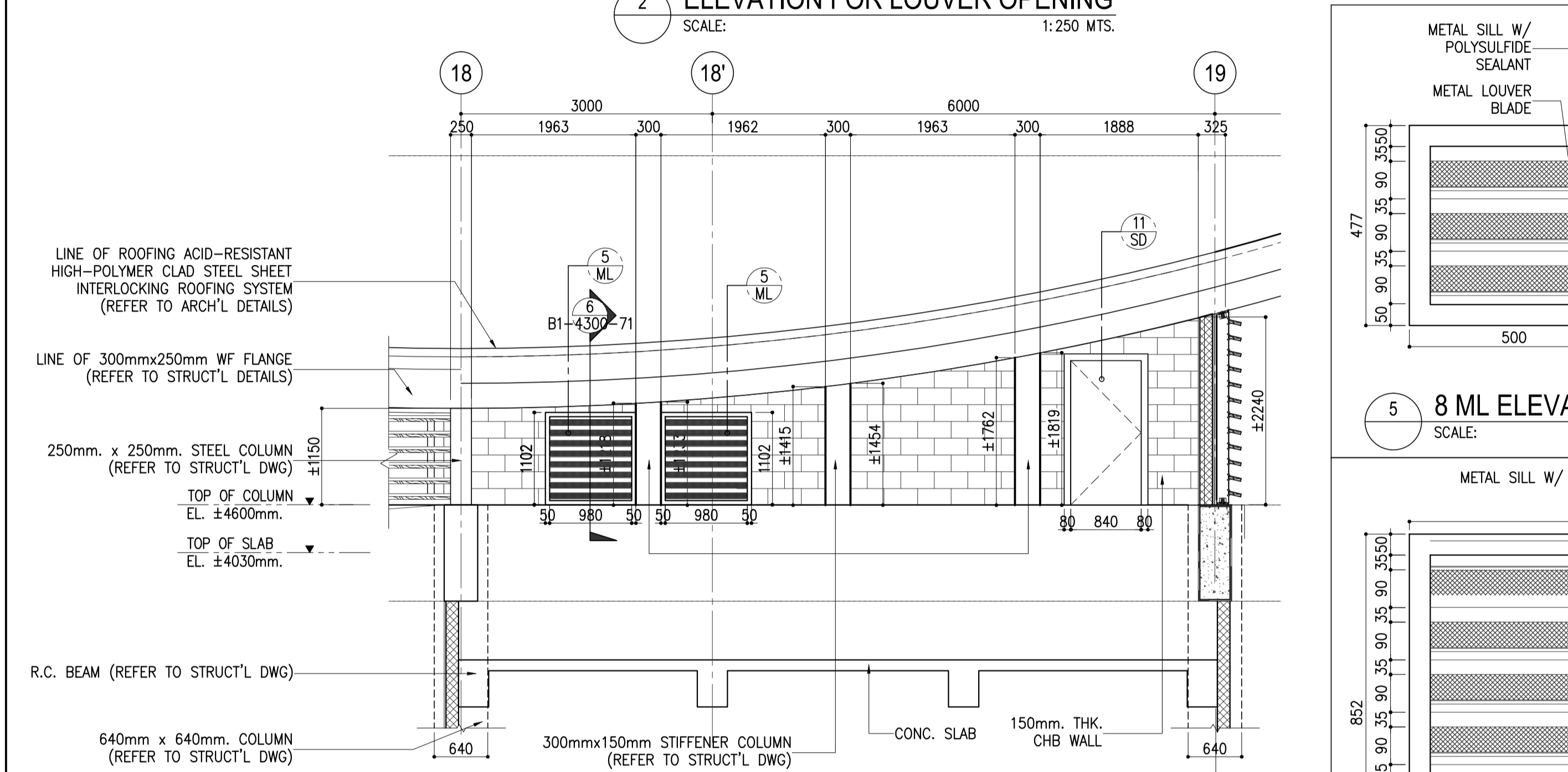
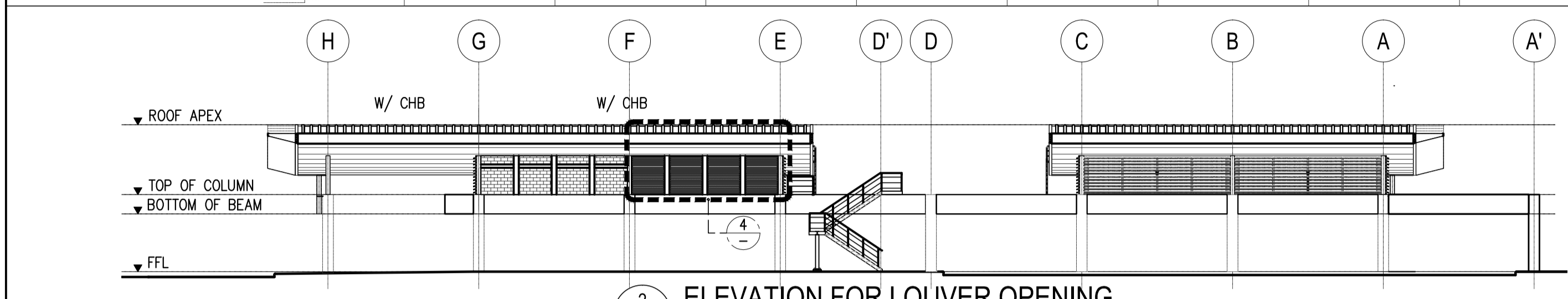
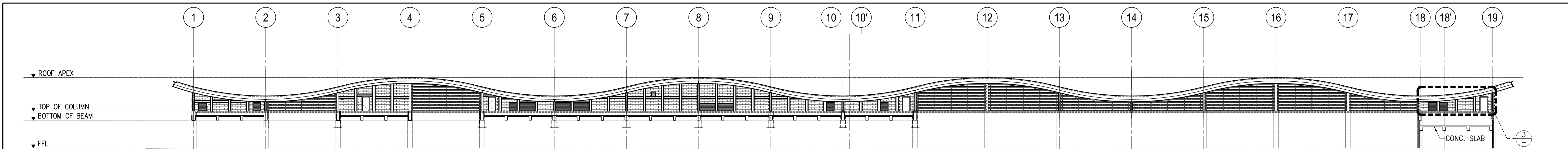
	PREPARED BY: <b>WILLIAM I. MALLONGA</b> <small>PROF. Architect PIR. 3911137 RES. NO.: 4623 DATE: MAY 9, 2013 TEL. 159-564-198 PLACE: MANILA CITY</small>	RECOMMENDING APPROVAL: <b>ILDEFONSO T. PATDU, JR.</b> <small>Assistant Secretary for Project Implementation, DOTC</small>	APPROVED: <b>JULIANITO G. BUCAYAN, JR.</b> <small>Undersecretary for Project Implementation, DOTC</small>	PROJECT TITLE: <b>NEW BOHOL AIRPORT CONSTRUCTION AND SUSTAINABLE ENVIRONMENT PROTECTION PROJECT</b>	LOCATION: MUNICIPALITY OF PANGLAO, PROVINCE OF BOHOL, PHILIPPINES	SHEET CONTENTS: COMPONENT-4 BUILDING WORKS (B) SUBCOMPONENT -4-1 (B1) PASSENGER TERMINAL BUILDING ARCHITECTURAL SCHEDULE OF LOUVERS	SHEET NO.: <b>B1-4300-70</b>
	JICA DESIGN CONSULTANT JOINT VENTURE	TADASHI AOI <small>Team Leader</small>	ILDEFONSO T. PATDU, JR. <small>Assistant Secretary for Project Implementation, DOTC</small>	JULIANITO G. BUCAYAN, JR. <small>Undersecretary for Project Implementation, DOTC</small>	DATE: JUNE 2013	INDEX:	AMENDMENTS:



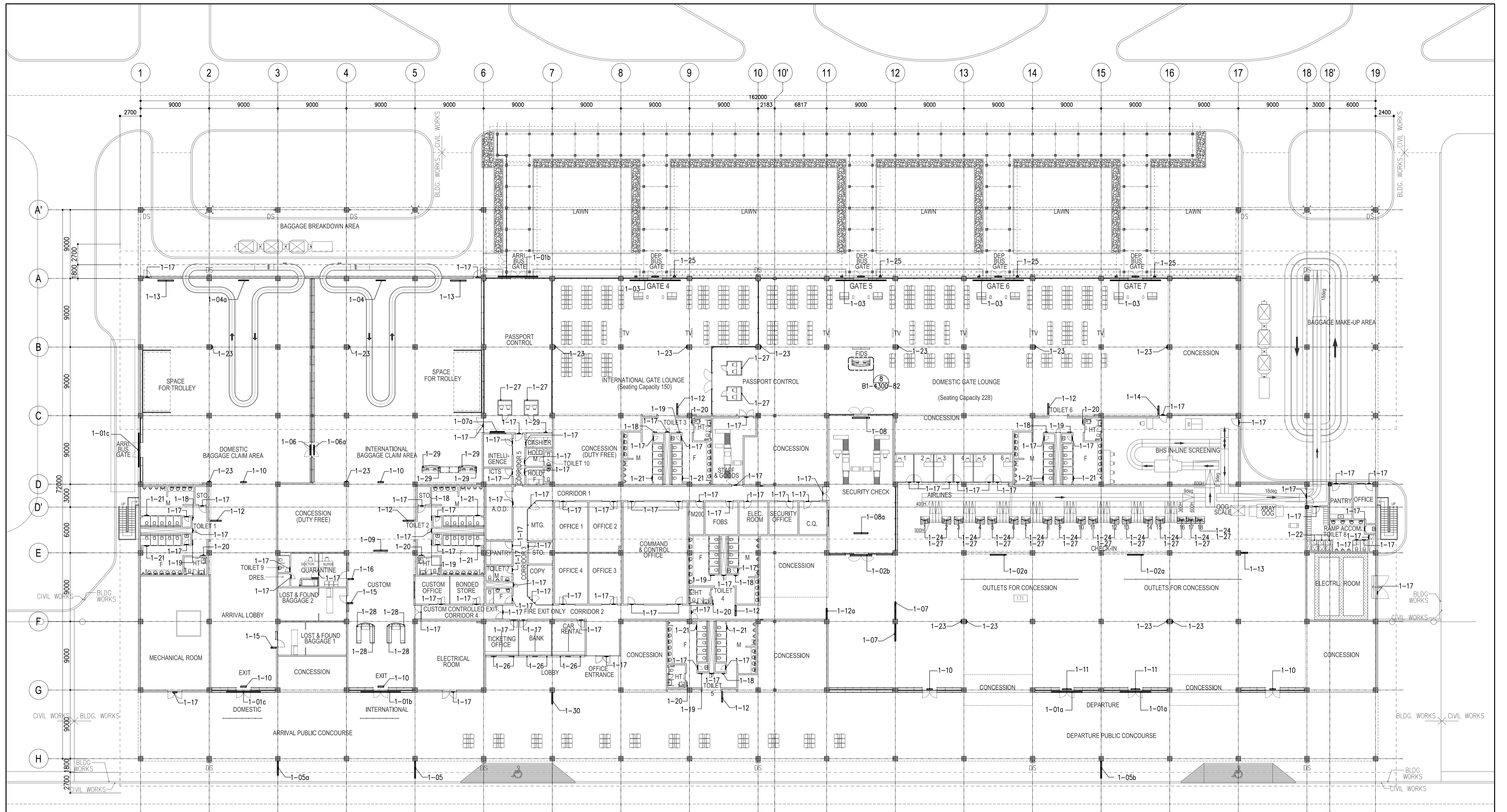
	PREPARED BY: <b>WILLIAM L. MALLONGA</b> <small>PROF: Architect PIR. 3911137 REG. NO.: 4623 DATE: MAY 9, 2013 TAN. 150-564-196 PLACE: MAKATI CITY</small>	RECOMMENDING APPROVAL: <b>ILDEFONSO T. PATDU, JR.</b> <small>Assistant Secretary for Project Implementation, DOTC</small>	APPROVED: <b>JULIANITO G. BUCAYAN, JR.</b> <small>Undersecretary for Project Implementation, DOTC</small>	PROJECT TITLE: <b>NEW BOHOL AIRPORT CONSTRUCTION AND SUSTAINABLE ENVIRONMENT PROTECTION PROJECT</b>	SHEET CONTENTS: COMPONENT-4 BUILDING WORKS (B) SUBCOMPONENT -4-1 (B1) PASSENGER TERMINAL BUILDING ARCHITECTURAL SCHEDULE OF MECHANICAL LOUVERS 1-3	SHEET NO: <b>B1-4300-71</b>
	JICA DESIGN CONSULTANT JOINT VENTURE <b>JAC</b> JAPAN AIRPORT CONSULTANTS, INC.	JAPAN INTERNATIONAL COOPERATION AGENCY	<b>TADASHI AOI</b> <small>Team Leader</small>	<b>JULIANITO G. BUCAYAN, JR.</b> <small>Undersecretary for Project Implementation, DOTC</small>	LOCATION: MUNICIPALITY OF PANGLAO, PROVINCE OF BOHOL, PHILIPPINES	DATE INDEX AMENDMENTS JUNE 2013



	PREPARED BY: <b>WILLIAM I. MALLONGA</b> <small>PROF: Architect PIR. 3911137 REG. NO.: 4623 DATE: MAY 9, 2013 TIN: 150-564-196 PLACE: MAKATI CITY</small>	RECOMMENDING APPROVAL: <b>ILDEFONSO T. PATDU, JR.</b> <small>Assistant Secretary for Project Implementation, DOTC</small>	APPROVED: <b>JULIANITO G. BUCAYAN, JR.</b> <small>Undersecretary for Project Implementation, DOTC</small>	PROJECT TITLE: <b>NEW BOHOL AIRPORT CONSTRUCTION AND SUSTAINABLE ENVIRONMENT PROTECTION PROJECT</b>	SHEET CONTENTS: COMPONENT-4 BUILDING WORKS (B) SUBCOMPONENT -4-1 (B1) PASSENGER TERMINAL BUILDING ARCHITECTURAL SCHEDULE OF MECHANICAL LOUVERS 2-3	SHEET NO: <b>B1-4300-72</b>
	JICA DESIGN CONSULTANT JOINT VENTURE <b>TADASHI AOI</b> <small>Team Leader</small>	LOCATION: MUNICIPALITY OF PANGLAO, PROVINCE OF BOHOL, PHILIPPINES	DATE: JUNE 2013	INDEX:	AMENDMENTS:	Prepared by: WIM Checked by: HC Validated by:



	PREPARED BY: <b>WILLIAM I. MALLONGA</b> <small>PROF: Architect PIR. 3911137 REG. NO.: 4623 DATE: MAY 9, 2013 TIN: 150-564-196 PLACE: MAKATI CITY</small>	RECOMMENDING APPROVAL: <b>ILDEFONSO T. PATDU, JR.</b> <small>Assistant Secretary for Project Implementation, DOTC</small>	APPROVED: <b>JULIANITO G. BUCAYAN, JR.</b> <small>Undersecretary for Project Implementation, DOTC</small>	PROJECT TITLE: <b>NEW BOHOL AIRPORT CONSTRUCTION AND SUSTAINABLE ENVIRONMENT PROTECTION PROJECT</b>	LOCATION: MUNICIPALITY OF PANGLAO, PROVINCE OF BOHOL, PHILIPPINES	SHEET CONTENTS: COMPONENT-4 BUILDING WORKS (B) SUBCOMPONENT -4-1 (B1) PASSENGER TERMINAL BUILDING ARCHITECTURAL SCHEDULE OF MECHANICAL LOUVERS 3-3	SHEET NO.: <b>B1-4300-73</b>	
	JICA DESIGN CONSULTANT JOINT VENTURE <b>JAC</b> JAPAN AIRPORT CONSULTANTS, INC. <b>NIPPON KOEI CO., LTD.</b> <b>NIS CONSULTANTS CO., LTD.</b>	TADASHI AOI <small>Team Leader</small>	ILDEFONSO T. PATDU, JR. <small>Assistant Secretary for Project Implementation, DOTC</small>	JULIANITO G. BUCAYAN, JR. <small>Undersecretary for Project Implementation, DOTC</small>	DATE: JUNE 2013	INDEX:	AMENDMENTS:	Prepared by: WIM Checked by: HC Validated by:



1 GROUND FLOOR SIGN LAYOUT  
 B1-4300-75 SCALE: 1:250 M.

	PREPARED BY: <b>WILLIAM I. MALLONCA</b> <small>PROF. Architect I.F.R. 391137          REG. NO.: 4623 DATE: MAY 9, 2013          T.N. 150-564-196 PLACE: MAKATI CITY</small>	RECOMMENDING APPROVAL: <b>ILDEFONSO T. PATDU, JR.</b> <small>Assistant Secretary          for Project Implementation, DOTC</small>	APPROVED: <b>JULIANITO G. BUCAYAN, JR.</b> <small>Undersecretary          for Project Implementation, DOTC</small>	PROJECT TITLE: <b>NEW BOHOL AIRPORT CONSTRUCTION AND SUSTAINABLE ENVIRONMENT PROTECTION PROJECT</b> LOCATION: MUNICIPALITY OF PANGLAO, PROVINCE OF BOHOL, PHILIPPINES	SHEET CONTENTS: COMPONENT-4 BUILDING WORKS (B) SUBCOMPONENT -4-1 (B1) PASSENGER TERMINAL BUILDING ARCHITECTURAL SIGN LAYOUT	SHEET NO.: <b>B1-4300-75</b> DRAWING SCALE: 1:250 MTS.
	JICA DESIGN CONSULTANT JOINT VENTURE JAPAN INTERNATIONAL COOPERATION AGENCY	TADASHI AOI Team Leader	JUN 2015 DATE INDEX AMENDMENTS Prepared by WIM Checked by HC Validated by			



SIGN NO.	SIZE	FACE-FIX	COPY	FIXING TYPE	ILLUMINATED TYPE	QUANTITY	REMARK
1-01a	600X4010	1-C		4		2	RC
1-01b	468X5190	1-C		4		1	RC
1-01c	468X4470	1-C		4		1	RC
1-02a	468X2105	1-C		4a		2	RC
1-02b	468X2830	1-C		4a		2	RC
1-03	468X6340	1-C		4a		4	RC
1-04	468X1266	1-C		4a		2	RC
1-04a	468X1340	1-C		4a		2	RC
1-05	600X2240	2-B		2	○	1	BS
1-05a	600X2240	2-B		2	○	1	BS
1-05b	600X2240	2-B		2	○	1	BS
1-06	400X1310	1-P		1	○	1	BS
1-06a	400X1355	1-P		1	○	1	BS
1-07	500X2255	2-B		2	○	2	BS

SIGN NO.	SIZE	FACE-FIX	COPY	FIXING TYPE	ILLUMINATED TYPE	QUANTITY	REMARK
1-07a	300X1870	1-W		3	○	1	BS
1-08	450X1780	1-P		1	○	1	BS
1-08a	300X1845	1-P		1	○	1	BS
1-09	300X1815	1-P		1	○	1	BS
1-10	300X740	1-P		1	○	6	BS
1-11	300X1142	1-P		3	○	2	BS
1-12	300X1138	2-B		2	○	6	BS
1-12a	300X1398	1-P		1	○	1	BS
1-13	500X1300	1-B		2	○	2	BS
1-14	300X1075	2-B		2	○	1	BS
1-15	300X695	2-B		2	○	1	BS

1 SIGN SCHEDULE  
B1-4300-76 SCALE: 1:30 M.

2 SIGN SCHEDULE  
B1-4300-76 SCALE: 1:20 M.

FACE TYPE - 1: SINGLE FACE  
2: DOUBLE FACE  
3: THIRD FACE  
4: 4TH FACE

FIXING METHOD - P: PIPE MOUNT  
B: BRACKET TYPE  
W: WALL MOUNT TYPE  
C: INDIVIDUAL CUT-OUT MOUNT TYPE  
S: STICK ON MOUNT TYPE

REMARK: BS - BOX SIGN  
CL - CUT-OUT LETTER  
RC - RAISE CUT-OUT LETTER NOT ILLUMINATED  
DS - DOOR SIGN  
AS - ADVERTISEMENT SIGN  
CS - COUNTER SIGN  
OS - OTHER SIGN  
ES - ELECTRONIC PROGRAMMABLE SIGN

FACE TYPE - 1: SINGLE FACE  
2: DOUBLE FACE  
3: THIRD FACE  
4: 4TH FACE

FIXING METHOD - P: PIPE MOUNT  
B: BRACKET TYPE  
W: WALL MOUNT TYPE  
C: INDIVIDUAL CUT-OUT MOUNT TYPE  
S: STICK ON MOUNT TYPE

REMARK: BS - BOX SIGN  
CL - CUT-OUT LETTER  
RC - RAISE CUT-OUT LETTER NOT ILLUMINATED  
DS - DOOR SIGN  
AS - ADVERTISEMENT SIGN  
CS - COUNTER SIGN  
OS - OTHER SIGN  
ES - ELECTRONIC PROGRAMMABLE SIGN

	PREPARED BY: <b>WILLIAM L. MALLONGA</b> <small>PROF: Architect PIR. 3911137 REG. NO.: 4623 DATE: MAY 9, 2013 TIN: 150-564-196 PLACE: MAKATI CITY</small>	RECOMMENDING APPROVAL: <b>ILDEFONSO T. PATDU, JR.</b> <small>Assistant Secretary for Project Implementation, DOTC</small>	APPROVED: <b>JULIANITO G. BUCAYAN, JR.</b> <small>Undersecretary for Project Implementation, DOTC</small>	PROJECT TITLE: <b>NEW BOHOL AIRPORT CONSTRUCTION AND SUSTAINABLE ENVIRONMENT PROTECTION PROJECT</b> LOCATION: MUNICIPALITY OF PANGLAO, PROVINCE OF BOHOL, PHILIPPINES	SHEET CONTENTS: COMPONENT-4 BUILDING WORKS (B) SUBCOMPONENT -4-1 (B1) PASSENGER TERMINAL BUILDING ARCHITECTURAL SIGN SCHEDULE 1-2	SHEET NO: <b>B1-4300-76</b> DRAWING SCALE: AS SHOWN
	JICA DESIGN CONSULTANT JOINT VENTURE JUNE 2013 DATE INDEX AMENDMENTS Prepared by WIM Checked by HC Validated by					

SIGN NO.	SIZE	FACE-FIX	COPY	FIXING TYPE	ILLUMINATED TYPE	QUANTITY	REMARK
1-16	300X740	2-B		2	○	1	BS
1-17	150X250	1-S		5	○	81	DS
1-18	200X400	1-S		5	○	6	DS
1-19	200X400	1-S		5	○	6	DS
1-20	200X400	1-S		5	○	6	DS
1-21	200X200	1-S		5	○	10	DS
1-22	200X200	1-S		5	○	3	DS
1-23	200X200	1-S		5	○	14	DS
1-24	500X500	1-P		3	○	18	BS
1-25	468X1465	1-W		4	○	4	RC
1-26	400X1600	1-W		3	○	6	BS
1-27	300X1000	1-B		1	○	8	ES
1-28	300X1000	1-P		1	○	4	ES

REMARK: BS - BOX SIGN  
CL - CUT-OUT LETTER  
RC - RAISE CUT-OUT LETTER NOT ILLUMINATED  
DS - DOOR SIGN  
AS - ADVERTISEMENT SIGN  
CS - COUNTER SIGN  
OS - OTHER SIGN  
ES - ELECTRONIC PROGRAMMABLE SIGN

FACE TYPE - 1: SINGLE FACE  
2: DOUBLE FACE  
3: THIRD FACE  
4: 4TH FACE

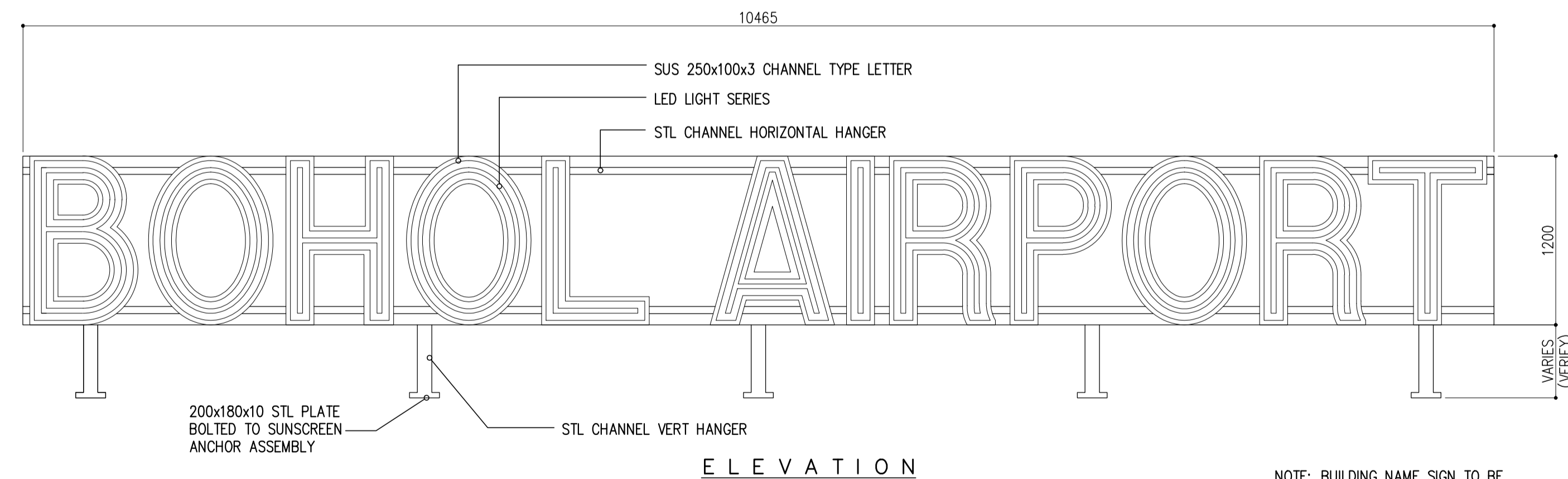
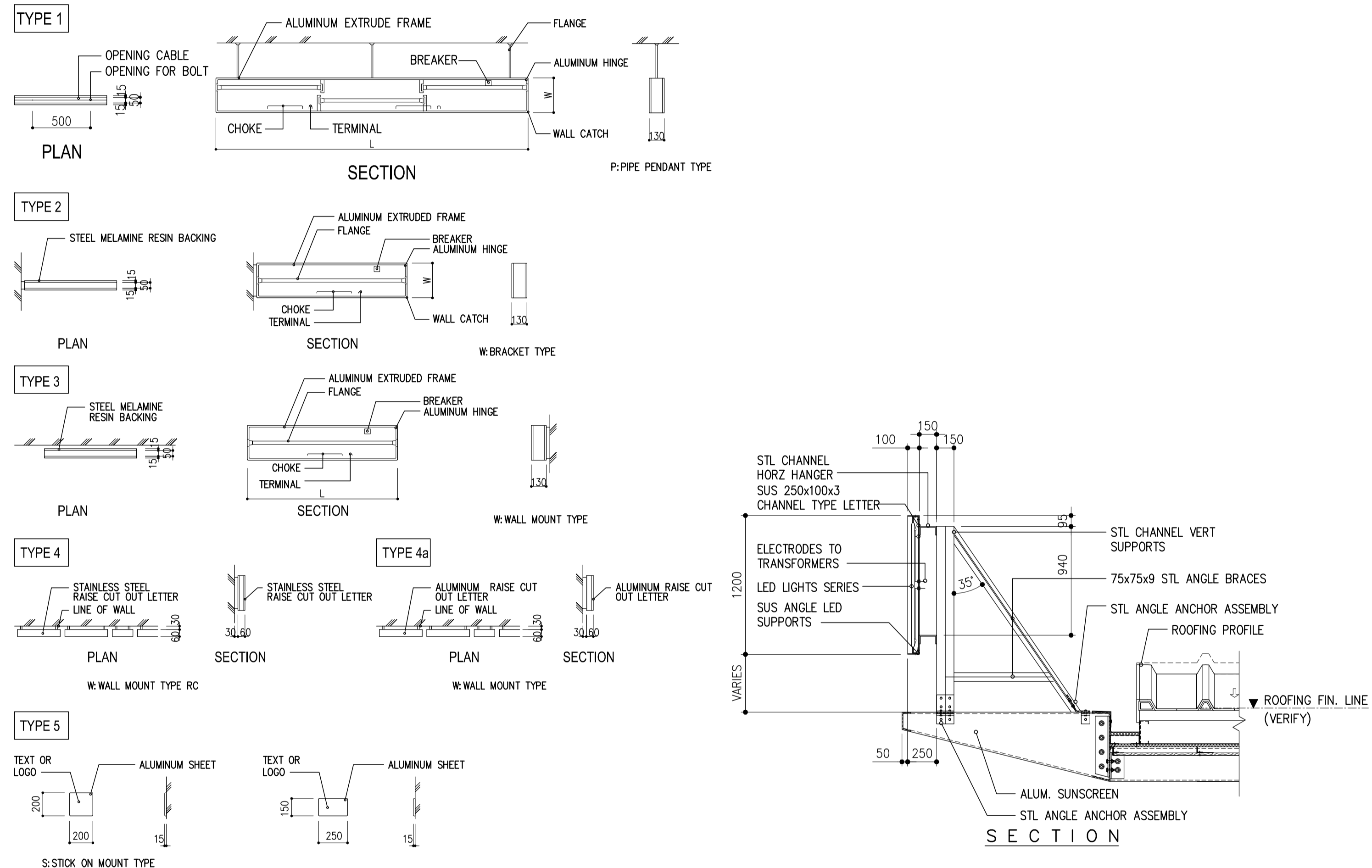
FIXING METHOD - P: PIPE MOUNT  
B: BRACKET TYPE  
W: WALL MOUNT TYPE  
C: INDIVIDUAL CUT-OUT MOUNT TYPE  
S: STICK ON MOUNT TYPE

HEIGHT x LENGTH : MM

**1 SIGN SCHEDULE**  
SCALE: 1:20 M.

SIGN NO.	SIZE	FACE-FIX	COPY	FIXING TYPE	ILLUMINATED TYPE	QUANTITY	REMARK
1-29	300X1200	1-P		1	○	4	BS
1-30	300X1500	2-B		2	○	1	BS

**FIXING TYPES**



NOTE: BUILDING NAME SIGN TO BE PLACED ON PTB AIRSIDE AND LANDSIDE

**2 ROOF SIGN DETAIL**  
SCALE: 1:30 M.

	PREPARED BY: <b>WILLIAM I. MALLONGA</b> <small>PROF. Architect PIR. 3811137  RES. NO. 4623 DATE: MAY 9, 2013  TEL. 159-564-198 PLACE: MANILA CITY</small>	RECOMMENDING APPROVAL: <b>ILDEFONSO T. PATDU, JR.</b> <small>Assistant Secretary for Project Implementation, DOTC</small>	APPROVED: <b>JULIANITO G. BUCAYAN, JR.</b> <small>Undersecretary for Project Implementation, DOTC</small>	PROJECT TITLE: <b>NEW BOHOL AIRPORT CONSTRUCTION AND SUSTAINABLE ENVIRONMENT PROTECTION PROJECT</b>	LOCATION: MUNICIPALITY OF PANGLAO, PROVINCE OF BOHOL, PHILIPPINES	SHEET CONTENTS: COMPONENT-4 BUILDING WORKS (B) SUBCOMPONENT -4-1 (B1) PASSENGER TERMINAL BUILDING ARCHITECTURAL SIGN SCHEDULE 2-2	SHEET NO: <b>B1-4300-77</b>	
	JICA DESIGN CONSULTANT JOINT VENTURE	TADASHI AOI <small>Team Leader</small>	ILDEFONSO T. PATDU, JR. <small>Assistant Secretary for Project Implementation, DOTC</small>	JULIANITO G. BUCAYAN, JR. <small>Undersecretary for Project Implementation, DOTC</small>	DATE: JUNE 2013	INDEX:	AMENDMENTS:	Prepared by: WIM Checked by: IC Validated by: