



Legend

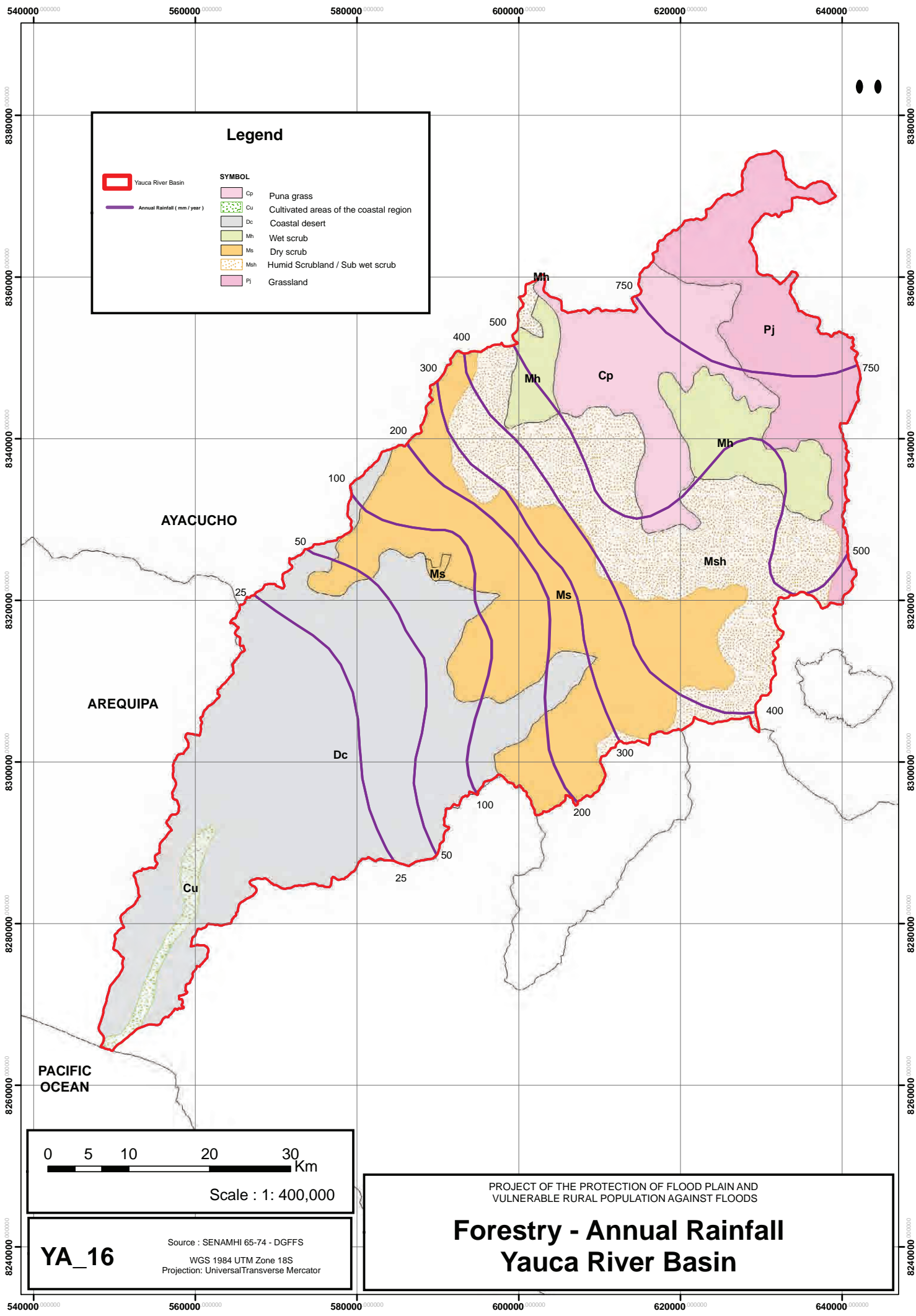
-  Basin limit
-  Rainfall (mm / year)

0 5 10 20 30 Km
Scale : 1: 400,000

YA_15
Source : SENAMHI 65-74
WGS 1984 UTM Zone 18S
Projection: Universal Transverse Mercator

PROJECT OF THE PROTECTION OF FLOOD PLAIN AND
VULNERABLE RURAL POPULATION AGAINST FLOODS

Annual Rainfall Yauca River Basin



Legend

Yauca River Basin

Annual Rainfall (mm / year)

SYMBOL

	Cp	Puna grass
	Cu	Cultivated areas of the coastal region
	Dc	Coastal desert
	Mh	Wet scrub
	Ms	Dry scrub
	Msh	Humid Scrubland / Sub wet scrub
	Pj	Grassland

0 5 10 20 30 Km

Scale : 1: 400,000

YA_16

Source : SENAMHI 65-74 - DGFFS

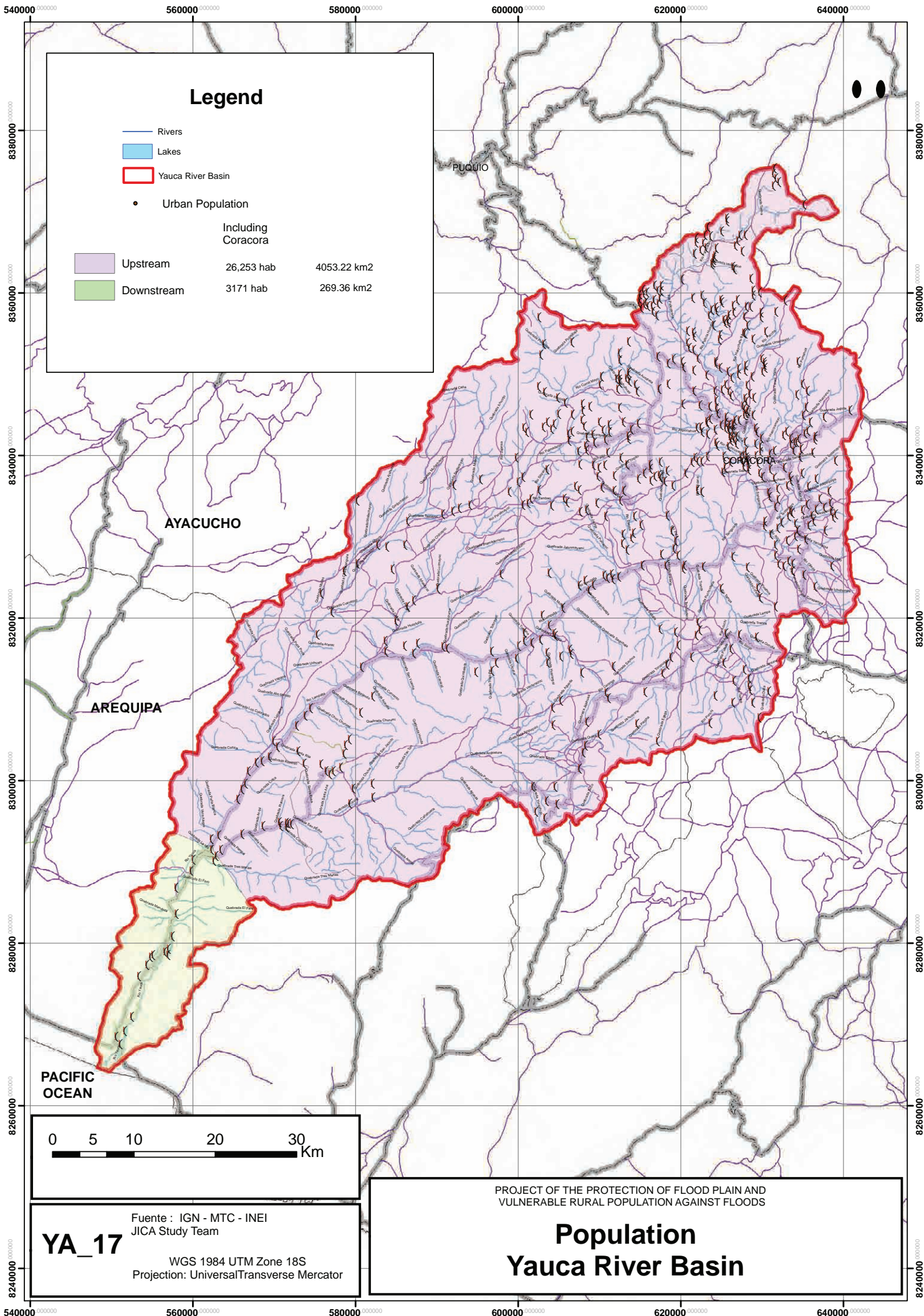
WGS 1984 UTM Zone 18S

Projection: Universal Transverse Mercator

PROJECT OF THE PROTECTION OF FLOOD PLAIN AND VULNERABLE RURAL POPULATION AGAINST FLOODS

Forestry - Annual Rainfall

Yauca River Basin



Legend

- Rivers
- Lakes
- Yauca River Basin
- Urban Population

	Including Coracora	
■ Upstream	26,253 hab	4053.22 km ²
■ Downstream	3171 hab	269.36 km ²

AYACUCHO

AREQUIPA

PACIFIC OCEAN

0 5 10 20 30 Km

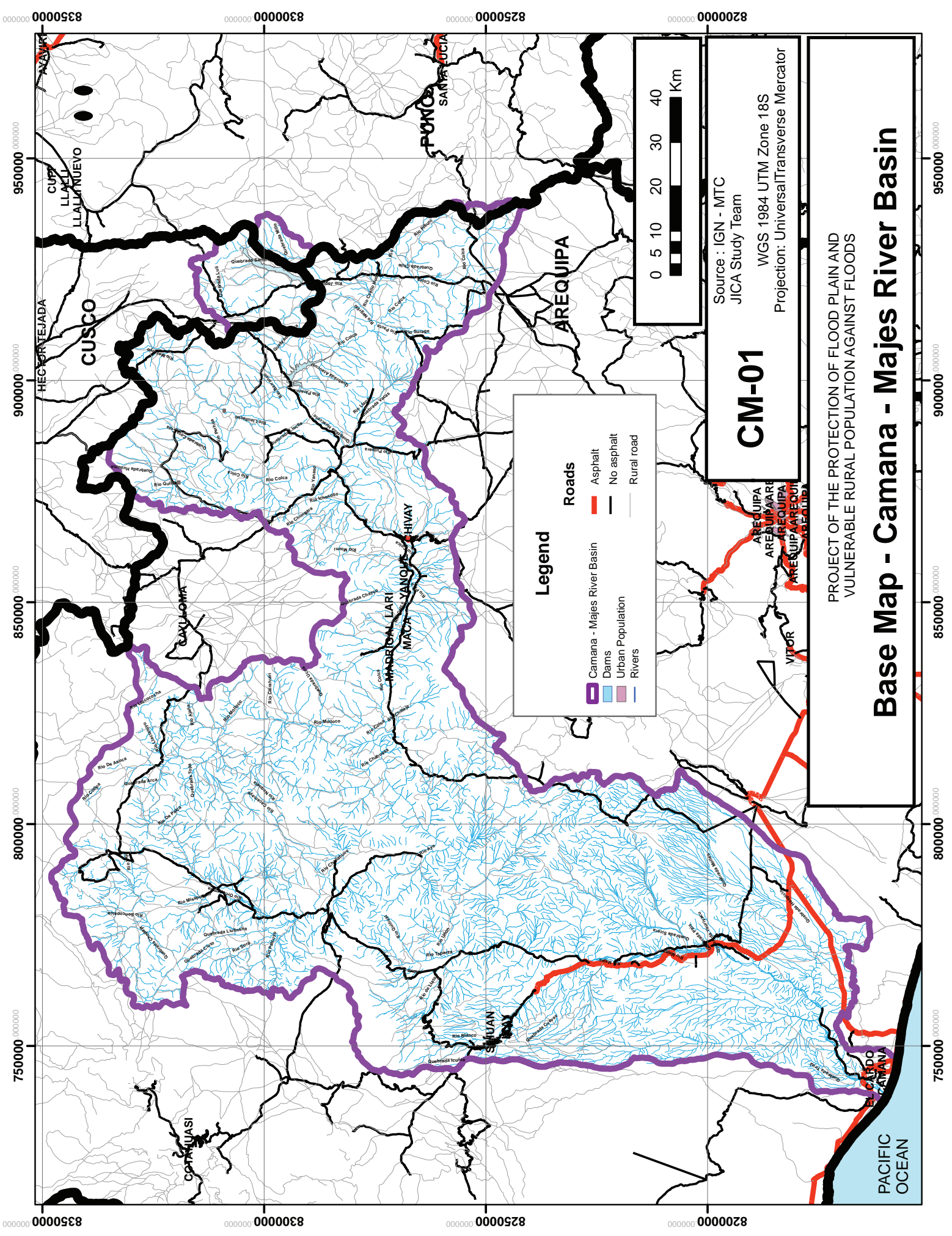
YA_17

Fuente : IGN - MTC - INEI
JICA Study Team

WGS 1984 UTM Zone 18S
Projection: Universal Transverse Mercator

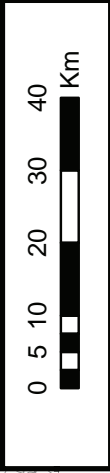
PROJECT OF THE PROTECTION OF FLOOD PLAIN AND
VULNERABLE RURAL POPULATION AGAINST FLOODS

Population Yauca River Basin



Legend

- Camana - Majes River Basin
- Dams
- Urban Population
- Rivers
- Roads
 - Asphalt
 - No asphalt
 - Rural road



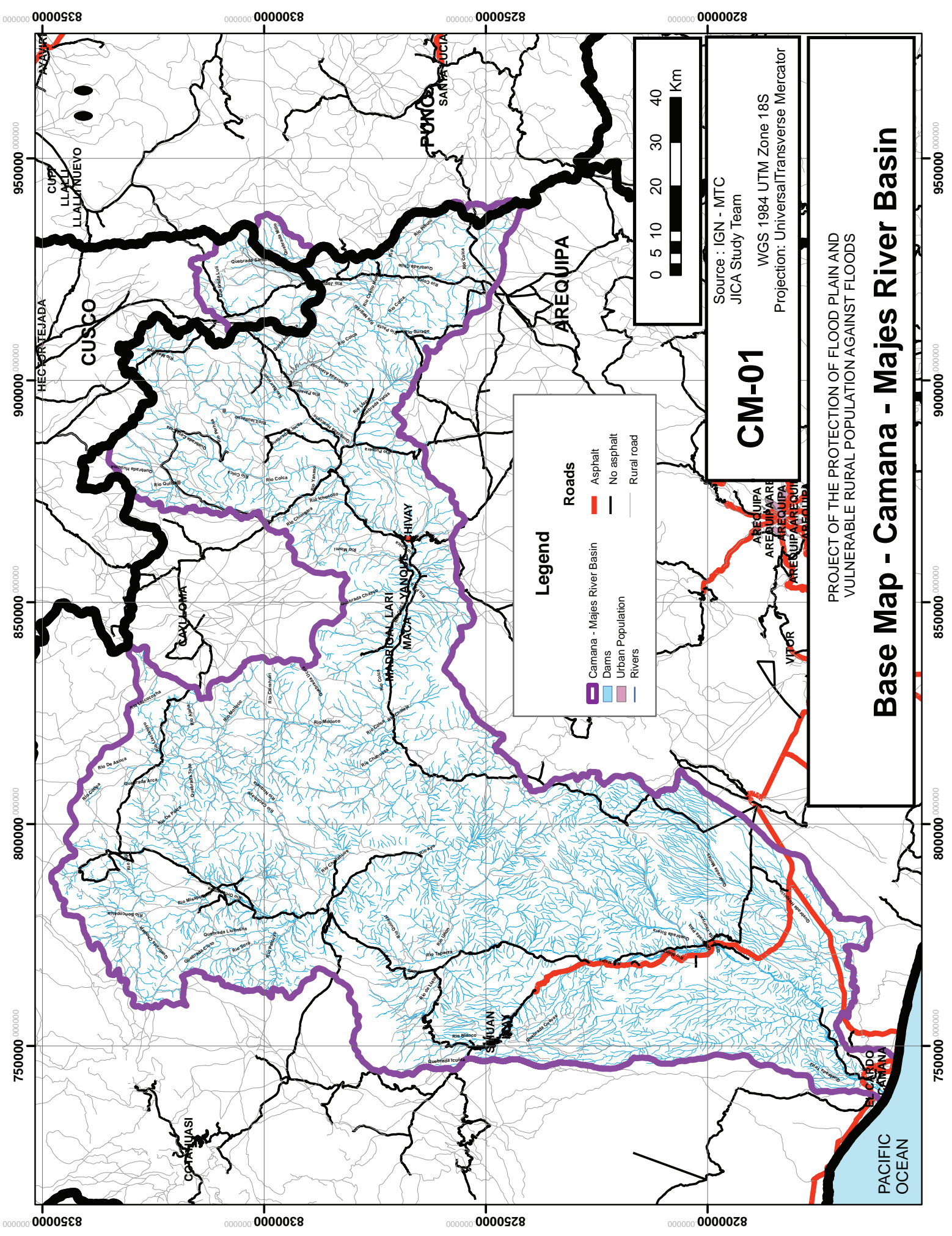
CM-01

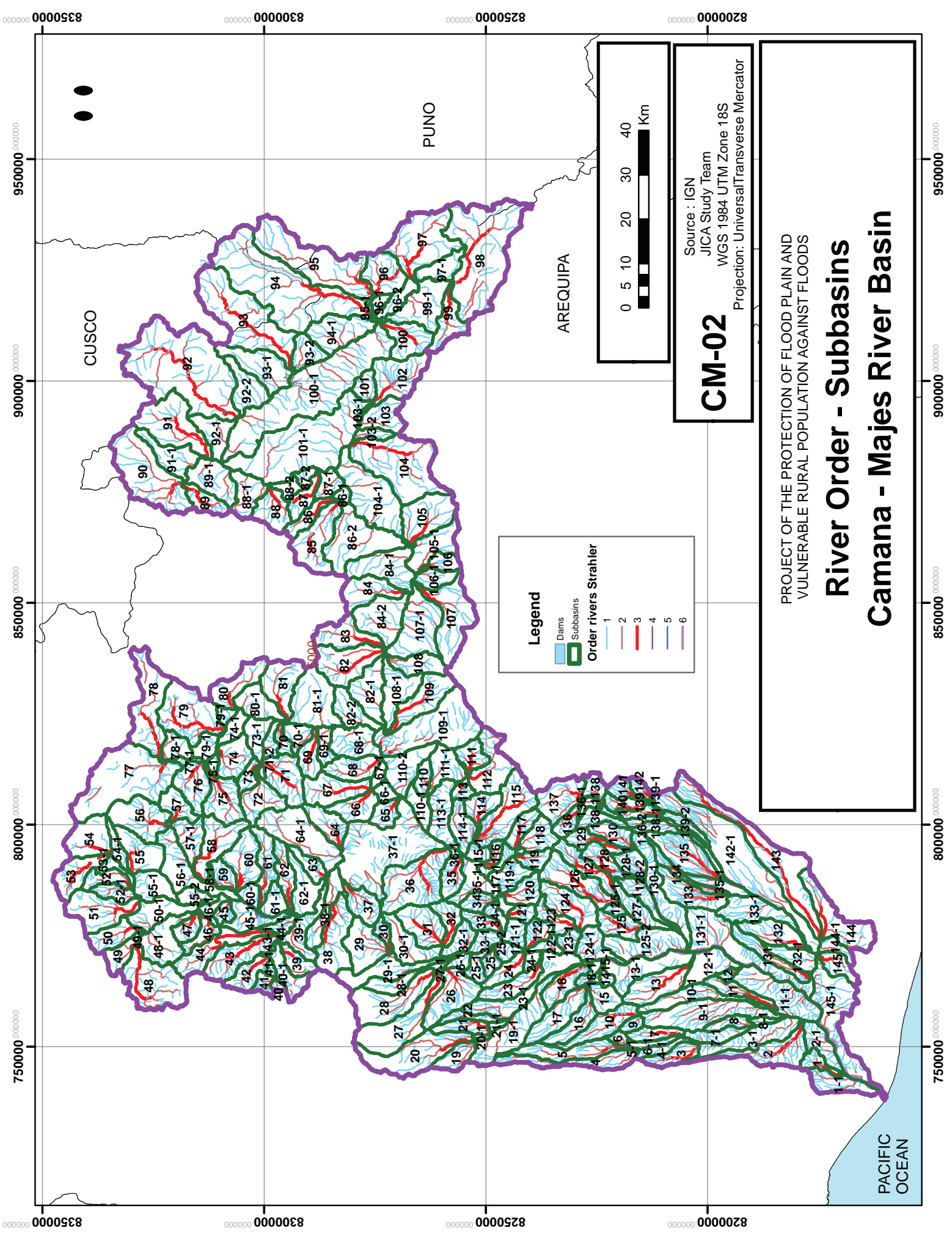
Source : IGN - MTC
JICA Study Team

WGS 1984 UTM Zone 18S
Projection: Universal Transverse Mercator

PROJECT OF THE PROTECTION OF FLOOD PLAIN AND
VULNERABLE RURAL POPULATION AGAINST FLOODS

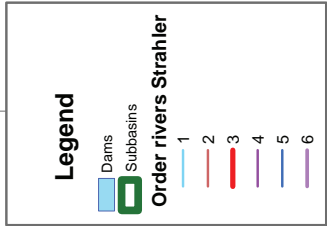
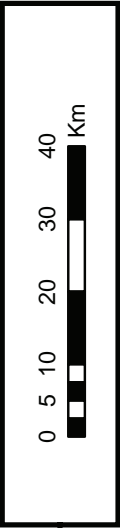
Base Map - Camana - Majes River Basin





CM-02

Source : IGN
 JICA Study Team
 WGS 1984 UTM Zone 18S
 Projection: Universal Transverse Mercator



PROJECT OF THE PROTECTION OF FLOOD PLAIN AND
 VULNERABLE RURAL POPULATION AGAINST FLOODS

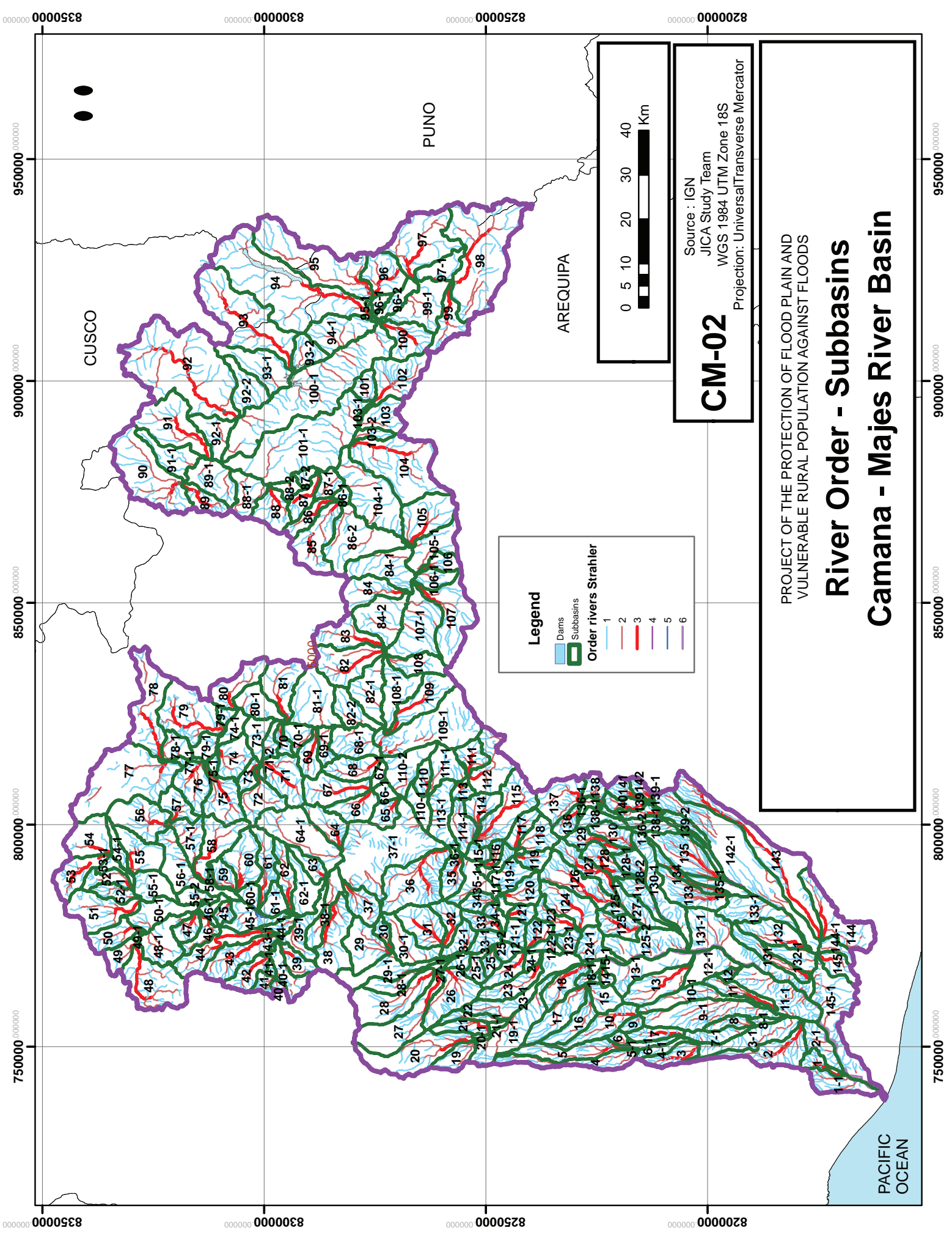
River Order - Subbasins Camana - Majes River Basin

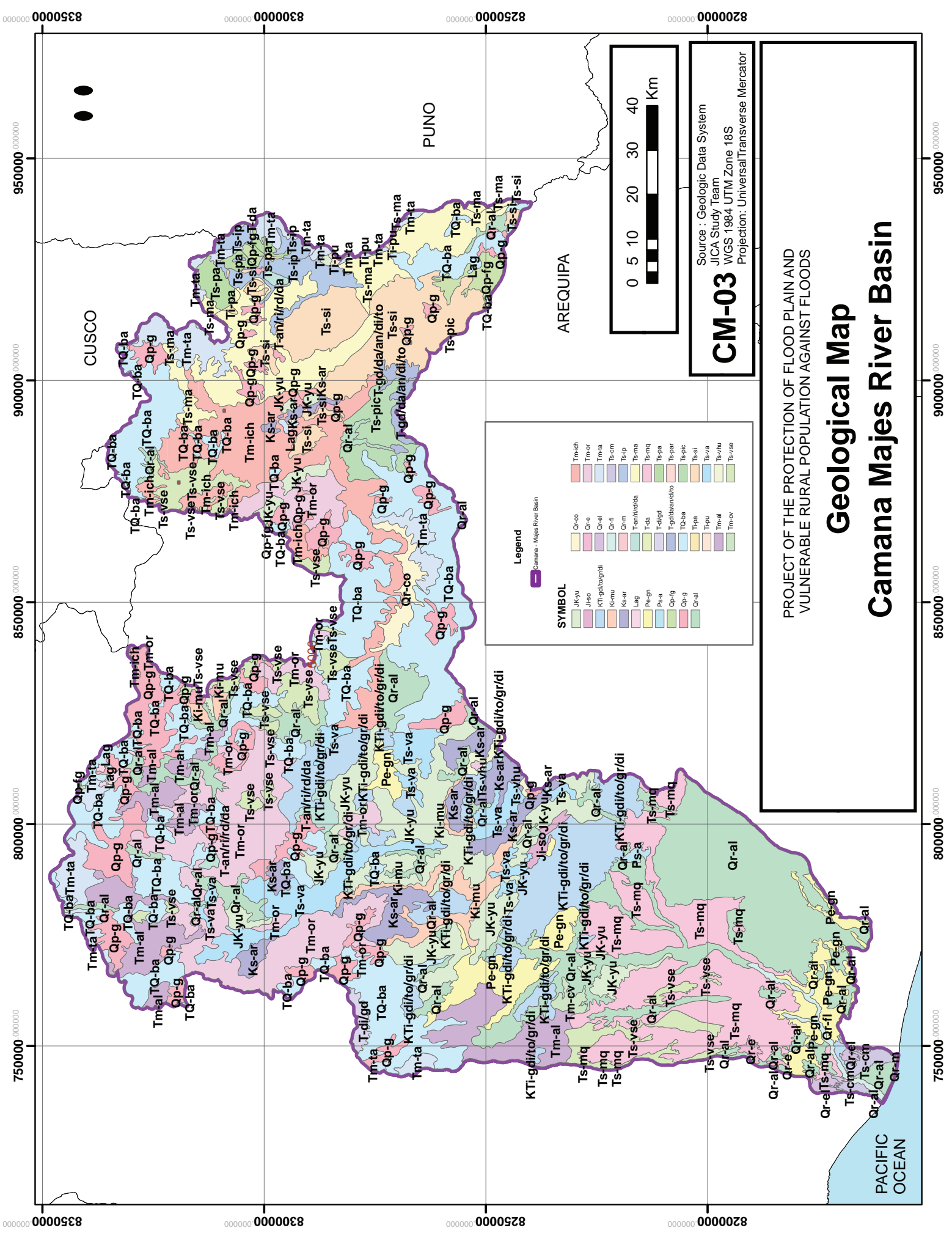
PACIFIC OCEAN

CUSCO

AREQUIPA

PUNO

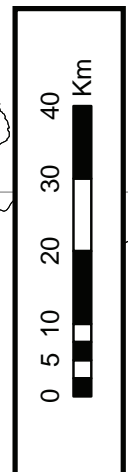




Legend

Camana - Majes River Basin

SYMBOL	Color	Code
JK-yu	Light Green	JK-yu
Ji-so	Light Blue	Ji-so
KTI-gdi/to/gr/di	Light Purple	KTI-gdi/to/gr/di
Ki-mu	Light Yellow	Ki-mu
Lag	Light Orange	Lag
Fam/rir/da	Light Green	Fam/rir/da
T-d	Light Blue	T-d
Pe-gn	Light Yellow	Pe-gn
Ps-a	Light Green	Ps-a
Qp-g	Light Blue	Qp-g
Qr-al	Light Purple	Qr-al
Tm-ich	Light Green	Tm-ich
Tm-or	Light Blue	Tm-or
Tm-ta	Light Yellow	Tm-ta
Ts-ic	Light Green	Ts-ic
Ts-va	Light Blue	Ts-va
Ts-vse	Light Yellow	Ts-vse
Ts-wa	Light Green	Ts-wa
Ts-yhu	Light Blue	Ts-yhu
Ts-vse	Light Yellow	Ts-vse
Tm-cv	Light Green	Tm-cv

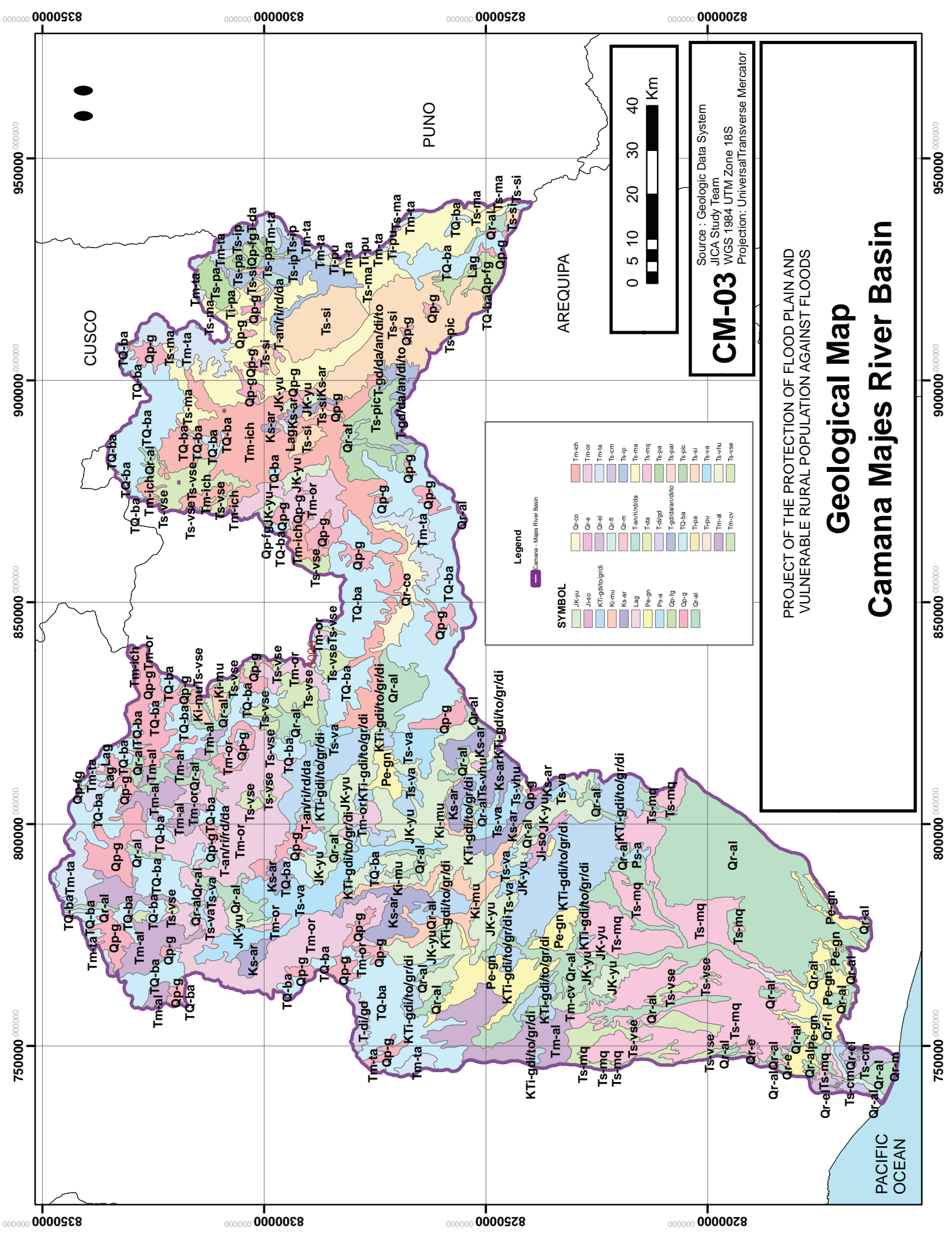


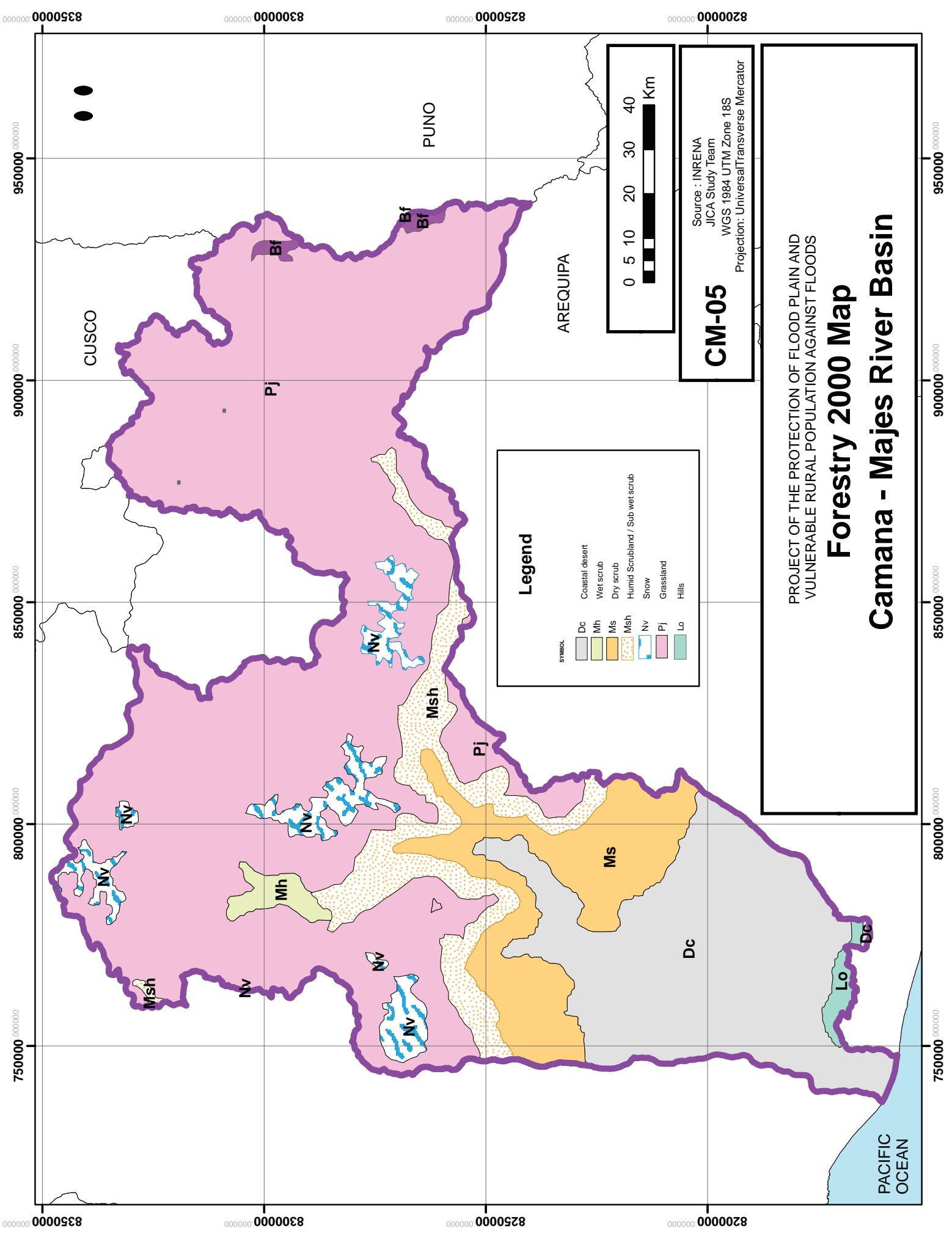
CM-03
 Source : Geologic Data System
 JICA Study Team
 WGS 1984 UTM Zone 18S
 Projection: Universal Transverse Mercator

PROJECT OF THE PROTECTION OF FLOOD PLAIN AND
 VULNERABLE RURAL POPULATION AGAINST FLOODS

Geological Map

Camana Majes River Basin





CM-05

Source : INRENA
 JICA Study Team
 WGS 1984 UTM Zone 18S
 Projection: UniversalTransverse Mercator

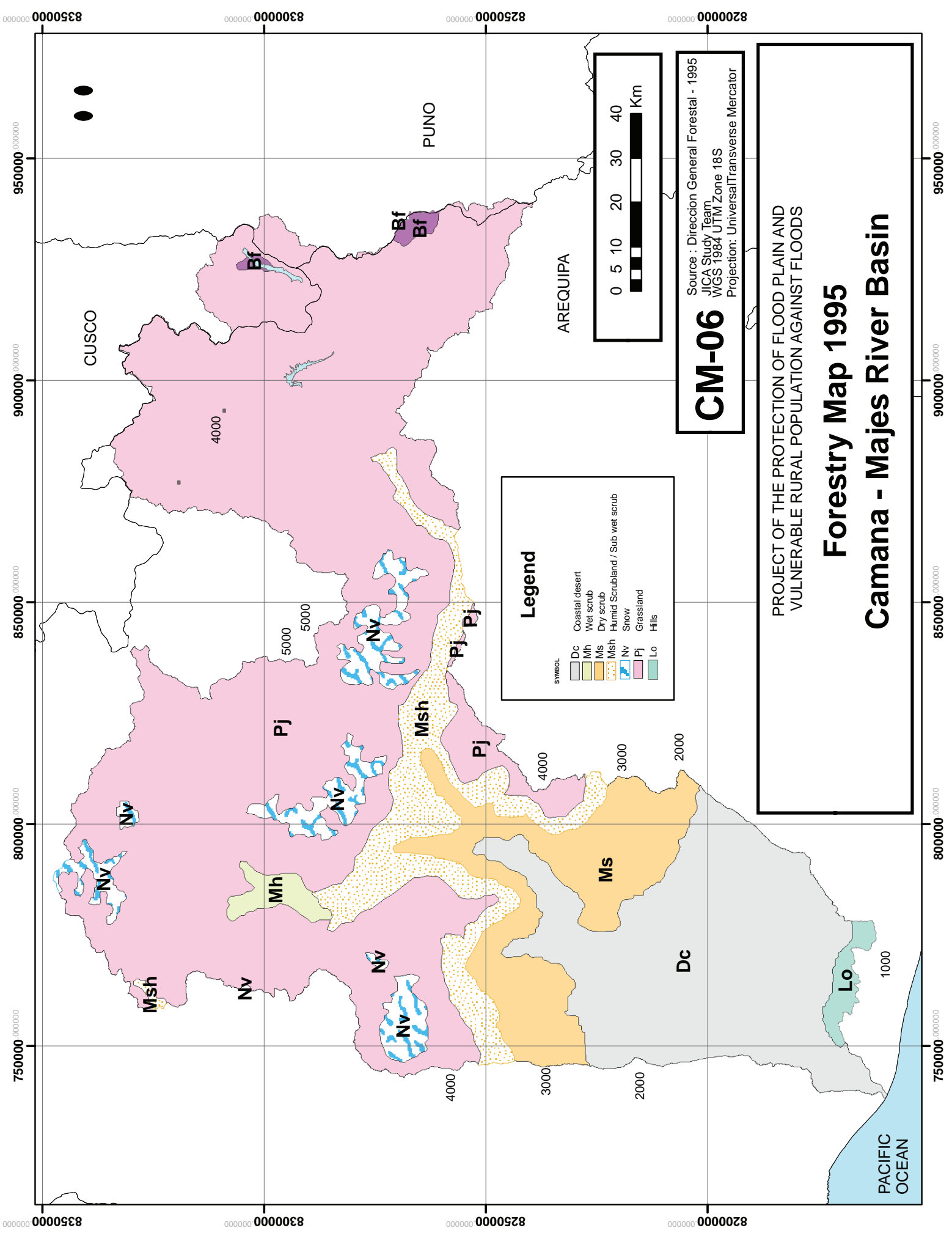
Legend

SYMBOL	Vegetation Type
Dc	Coastal desert
Mh	Wet scrub
Ms	Dry scrub
Mish	Humid Scrubland / Sub wet scrub
Nv	Snow
Pj	Grassland
Lo	Hills

PROJECT OF THE PROTECTION OF FLOOD PLAIN AND
 VULNERABLE RURAL POPULATION AGAINST FLOODS

Forestry 2000 Map

Camana - Majes River Basin



CM-06
 Source : Direccion General Forestal - 1995
 JICA Study Team
 WGS 1984 UTM Zone 18S
 Projection: Universal Transverse Mercator

Legend

SYMBOL	Description
Dc	Coastal desert
Mh	Wet scrub
Ms	Dry scrub
Msh	Humid Scrubland / Sub wet scrub
Nv	Snow
Pj	Grassland
Lo	Hills

PROJECT OF THE PROTECTION OF FLOOD PLAIN AND
 VULNERABLE RURAL POPULATION AGAINST FLOODS

Forestry Map 1995

Camana - Majes River Basin