

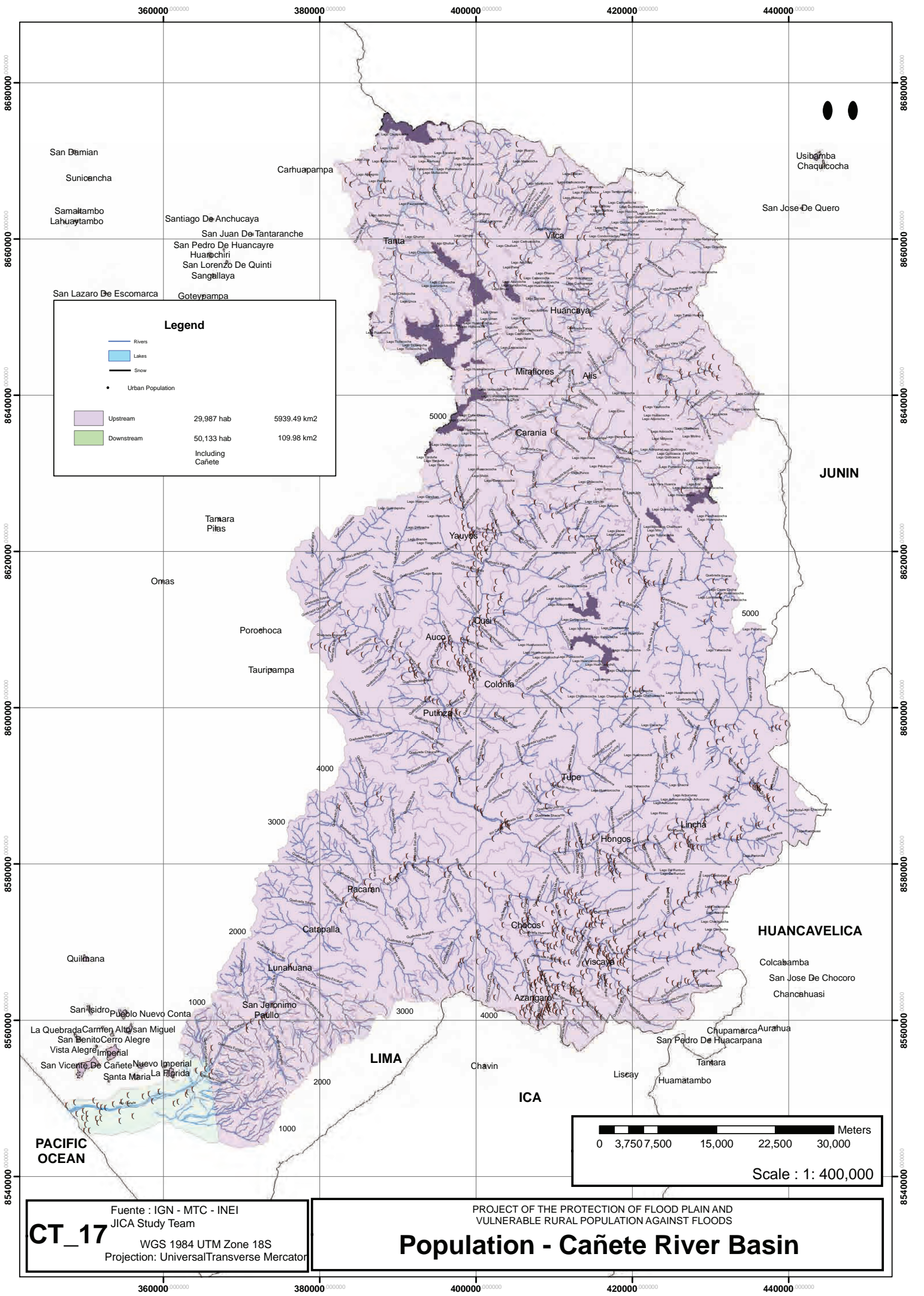
Legend

| | | | | |
|--|-----------------------------|--|---------|--|
| | Cañete River Basin | | Cp | Puna grass |
| | Lakes | | Cu | Cultivated areas of the coastal region |
| | Rivers | | Dc | Coastal desert |
| | Annual Rainfall (mm / year) | | Mh | Wet scrub |
| | | | Ms | Dry scrub |
| | | | Msh | Humid Scrubland / Sub wet scrub |
| | | | Pj | Grassland |
| | | | Nevados | Nevados |

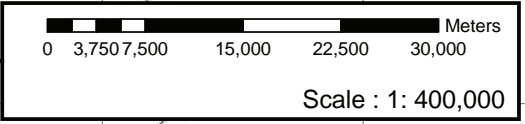
0 3.75 7.5 15 22.5 30 Kilometers
Scale : 1: 400,000

CT_16 Source : SENAMHI 65-74 - DGFFS
WGS 1984 UTM Zone 18S
Projection: UniversalTransverse Mercator

PROJECT OF THE PROTECTION OF FLOOD PLAIN AND VULNERABLE RURAL POPULATION AGAINST FLOODS
Forestry - Annual Rainfall
Cañete River Basin

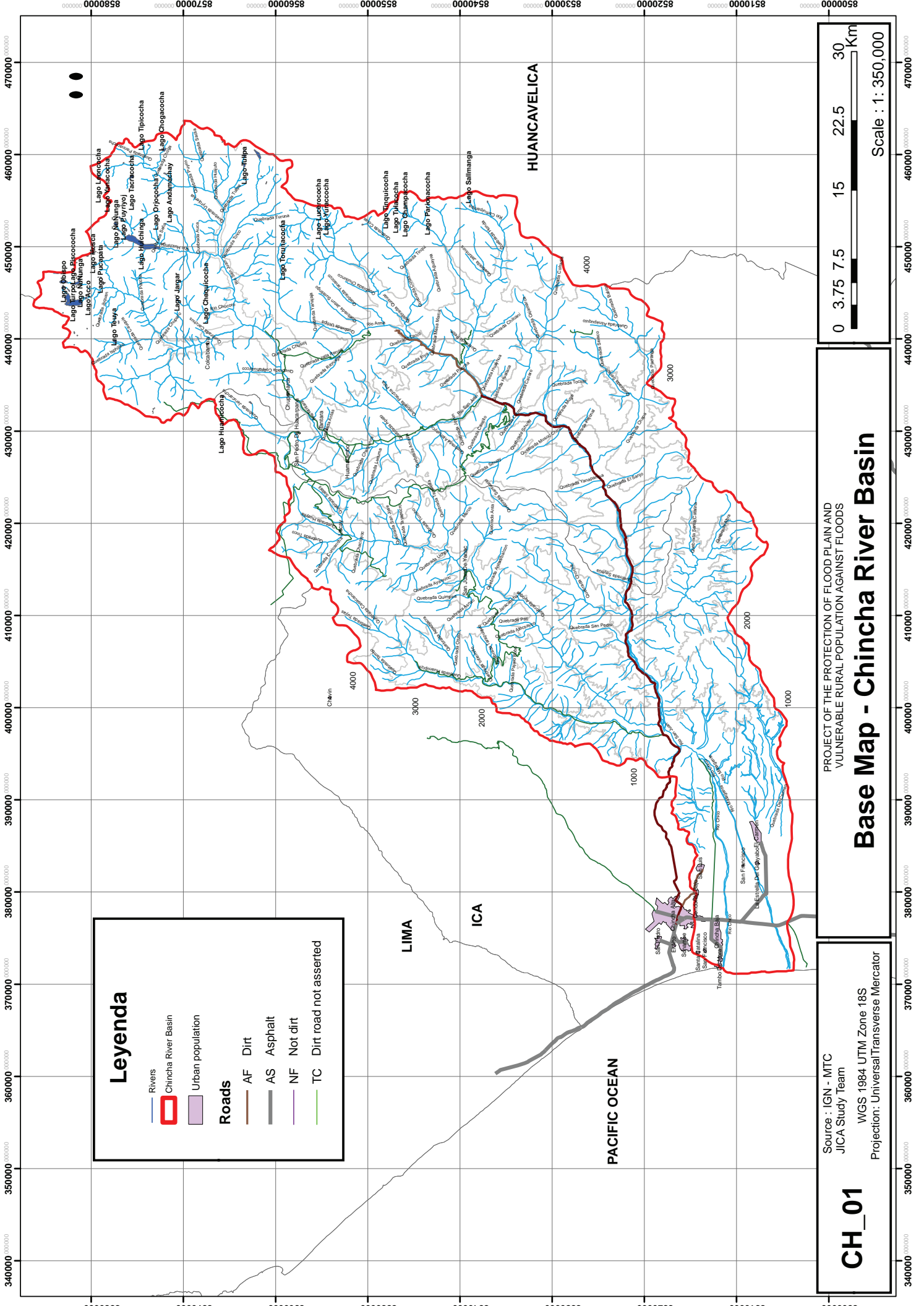


| Legend | | |
|--------|------------------|--|
| | Rivers | |
| | Lakes | |
| | Snow | |
| | Urban Population | |
| | Upstream | 29,987 hab 5939.49 km ² |
| | Downstream | 50,133 hab 109.98 km ² Including Cafete |



CT_17
 Fuente : IGN - MTC - INEI
 JICA Study Team
 WGS 1984 UTM Zone 18S
 Projection: UniversalTransverse Mercator

PROJECT OF THE PROTECTION OF FLOOD PLAIN AND
 VULNERABLE RURAL POPULATION AGAINST FLOODS
Population - Cañete River Basin



Leyenda

- Rivers
- Chincha River Basin
- Urban population

Roads

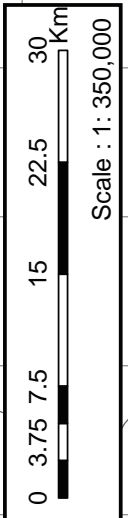
- AF Dirt
- AS Asphalt
- NF Not dirt
- TC Dirt road not asserted

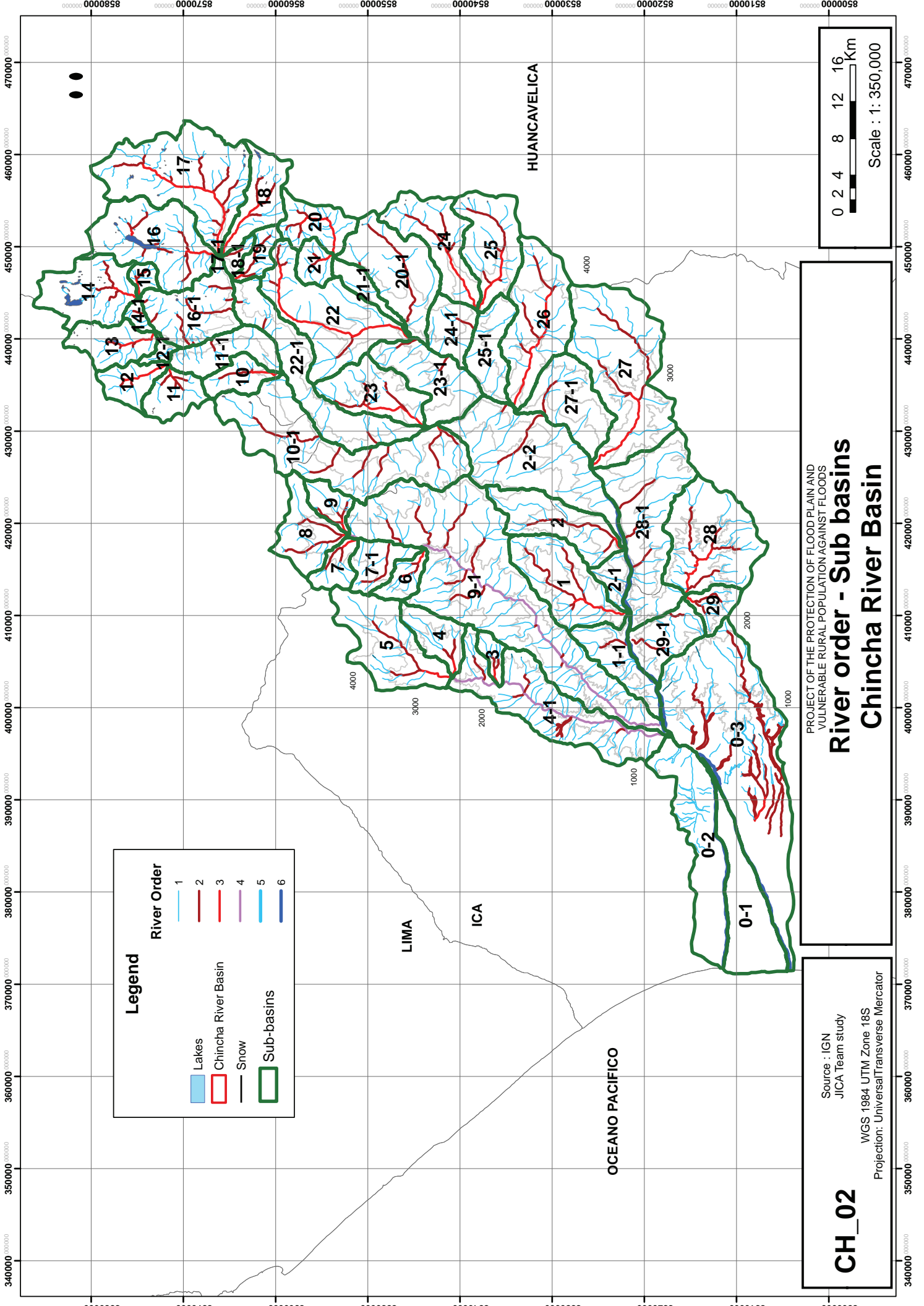
CH_01

Source : IGN - MTC
 JICA Study Team
 WGS 1984 UTM Zone 18S
 Projection: Universal Transverse Mercator

PROJECT OF THE PROTECTION OF FLOOD PLAIN AND
 VULNERABLE RURAL POPULATION AGAINST FLOODS

Base Map - Chincha River Basin





Legend

| | |
|--|---------------------|
| | Lakes |
| | Chincha River Basin |
| | Snow |
| | Sub-basins |

| | |
|--|---------------|
| | River Order 1 |
| | River Order 2 |
| | River Order 3 |
| | River Order 4 |
| | River Order 5 |
| | River Order 6 |

CH_02

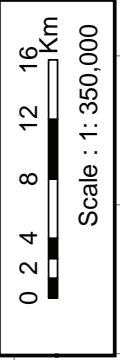
Source : IGN
 JICA Team study

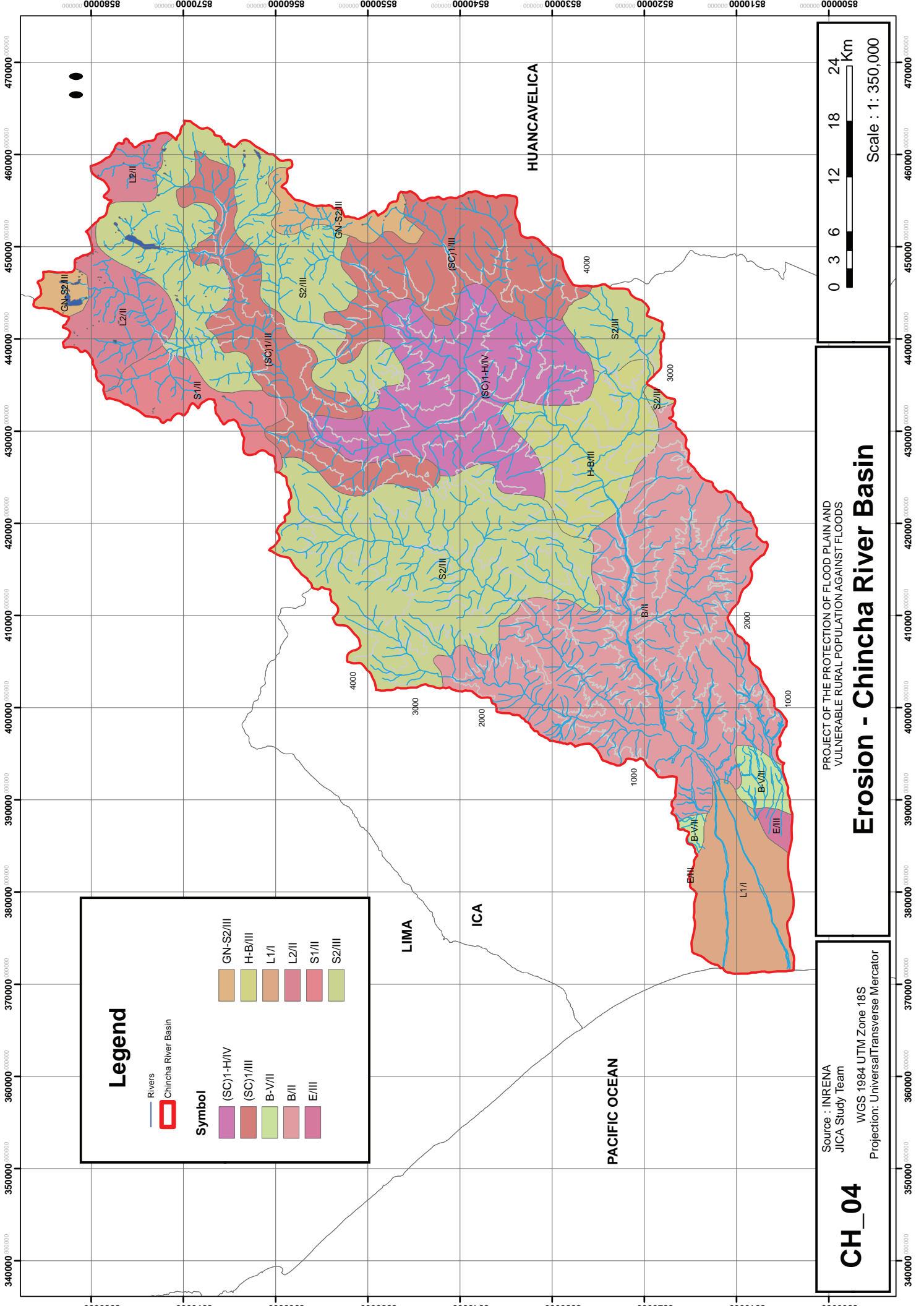
WGS 1984 UTM Zone 18S
 Projection: Universal Transverse Mercator

PROJECT OF THE PROTECTION OF FLOOD PLAIN AND
 VULNERABLE RURAL POPULATION AGAINST FLOODS

River order - Sub basins

Chincha River Basin





Legend

— Rivers
 Chincha River Basin

Symbol

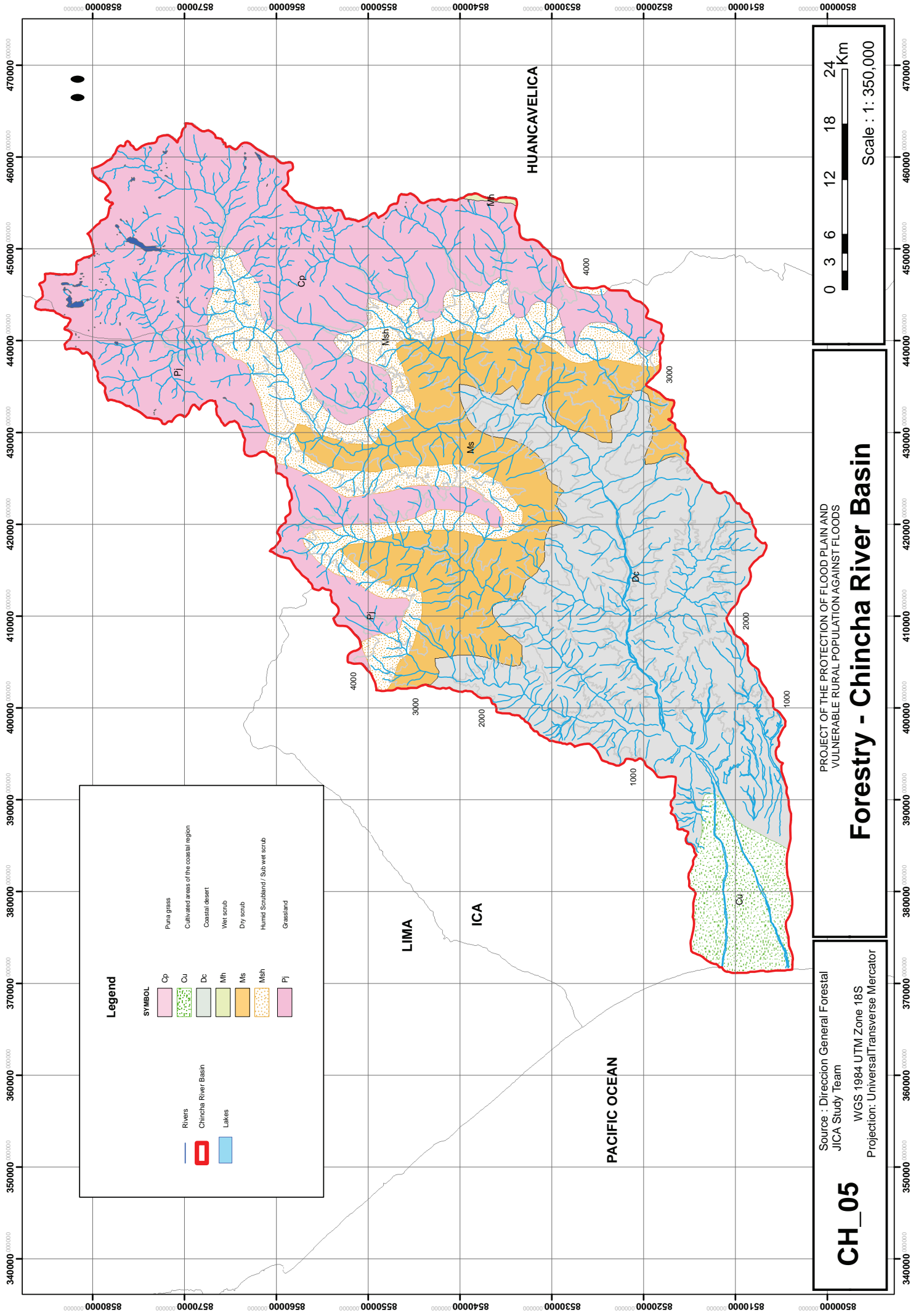
| | | | |
|--|------------|--|-----------|
| | (SC)1-H/IV | | GN-S2/III |
| | (SC)1/III | | H-B/III |
| | B-V/II | | L1/I |
| | B/II | | L2/II |
| | E/III | | S1/II |
| | | | S2/III |

0 3 6 12 18 24
 Km

Scale : 1 : 350,000

PROJECT OF THE PROTECTION OF FLOOD PLAIN AND
 VULNERABLE RURAL POPULATION AGAINST FLOODS
Erosion - Chincha River Basin

CH_04
 Source : INRENA
 JICA Study Team
 WGS 1984 UTM Zone 18S
 Projection: Universal Transverse Mercator



Legend

| SYMBOL | |
|--------|--|
| | Rivers |
| | Chincha River Basin |
| | Lakes |
| | Puna grass |
| | Cultivated areas of the coastal region |
| | Coastal desert |
| | Well scrub |
| | Dry scrub |
| | Humid Scrubland / Sub wet scrub |
| | Grassland |

0 3 6 12 18 24 Km
Scale : 1 : 350,000

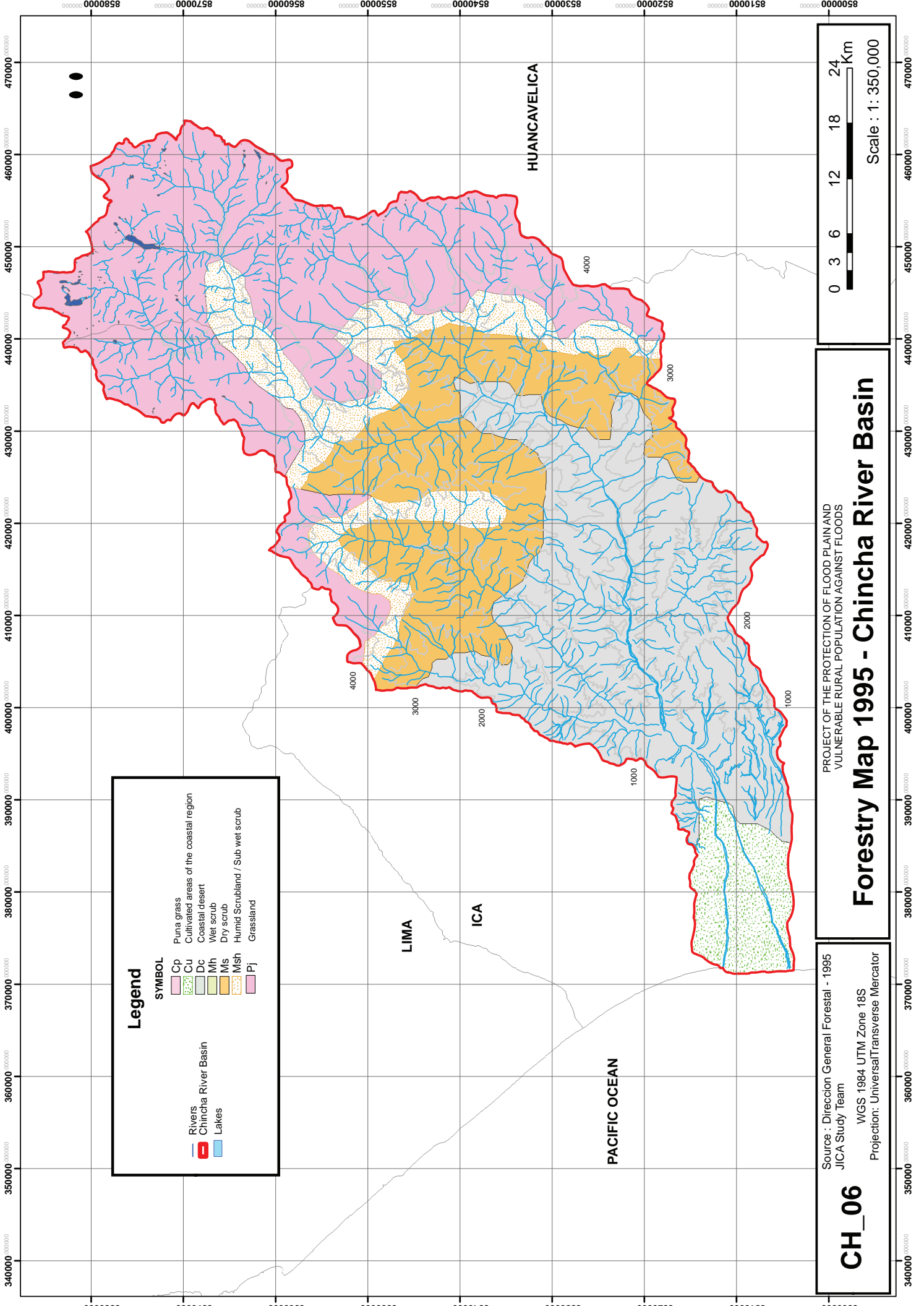
PROJECT OF THE PROTECTION OF FLOOD PLAIN AND VULNERABLE RURAL POPULATION AGAINST FLOODS

Forestry - Chincha River Basin

CH_05

Source : Direction General Forestal
JICA Study team

WGS 1984 UTM Zone 18S
Projection: Universal Transverse Mercator



Legend

| SYMBOL | |
|--------|--|
| | Rivers |
| | Chincha River Basin |
| | Lakes |
| | Puna grass |
| | Cultivated areas of the coastal region |
| | Coastal desert |
| | Wet scrub |
| | Dry scrub |
| | Humid Scrubland / Sub wet scrub |
| | Grassland |

0 3 6 12 18 24 Km

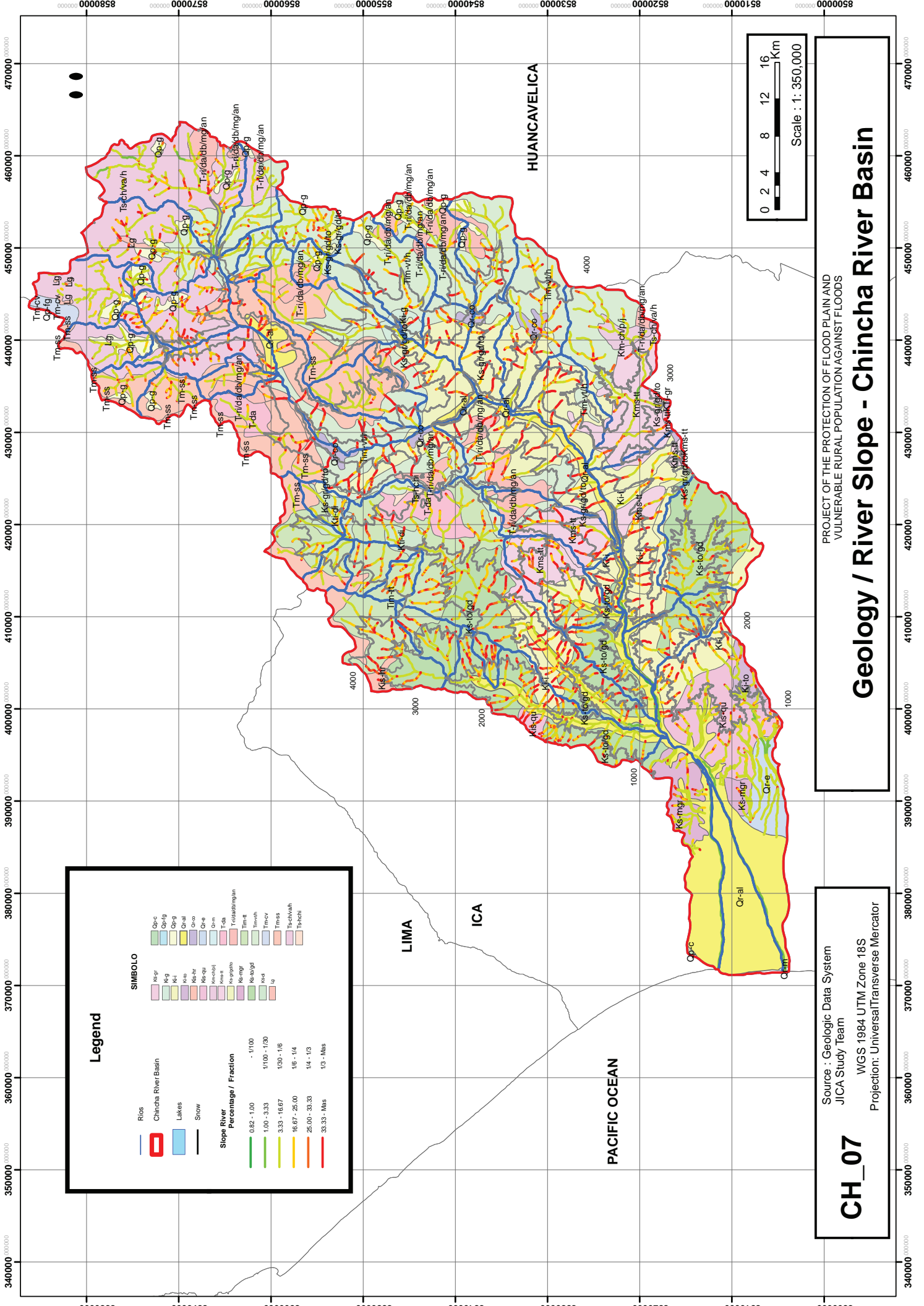
Scale : 1 : 350,000

PROJECT OF THE PROTECTION OF FLOOD PLAIN AND VULNERABLE RURAL POPULATION AGAINST FLOODS

Forestry Map 1995 - Chincha River Basin

CH_06

Source : Direccion General Forestal - 1995
 JICA Study Team
 WGS 1984 UTM Zone 18S
 Projection: Universal Transverse Mercator



Legend

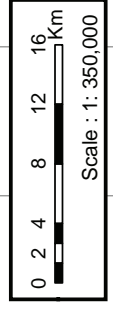
| | |
|-------|---------------------|
| Rios | Chincha River Basin |
| Lakes | Snow |

SIMBOLO

| | | | | | | | | | | | | | | | | | | | | | | |
|-------|-------|-------|-------|-------|-------|-------|-------|-------|-------|-------|-------|-------|-------|-------|-------|-------|-------|-------|-------|-------|-------|-------|
| Op-c | Op-g | Op-h | Op-i | Op-j | Op-k | Op-l | Op-m | Op-n | Op-o | Op-p | Op-q | Op-r | Op-s | Op-t | Op-u | Op-v | Op-w | Op-x | Op-y | Op-z | | |
| Or-a | Or-b | Or-c | Or-d | Or-e | Or-f | Or-g | Or-h | Or-i | Or-j | Or-k | Or-l | Or-m | Or-n | Or-o | Or-p | Or-q | Or-r | Or-s | Or-t | Or-u | Or-v | |
| Or-w | Or-x | Or-y | Or-z | Or-aa | Or-ab | Or-ac | Or-ad | Or-ae | Or-af | Or-ag | Or-ah | Or-ai | Or-aj | Or-ak | Or-al | Or-am | Or-an | Or-ao | Or-ap | Or-aq | Or-ar | Or-as |
| Or-at | Or-au | Or-av | Or-aw | Or-ax | Or-ay | Or-az | Or-ba | Or-bb | Or-bc | Or-bd | Or-be | Or-bf | Or-bg | Or-bh | Or-bi | Or-bj | Or-bk | Or-bl | Or-bm | Or-bn | Or-bo | Or-bp |
| Or-bq | Or-br | Or-bs | Or-bt | Or-bu | Or-bv | Or-bw | Or-bx | Or-by | Or-bz | Or-ca | Or-cb | Or-cc | Or-cd | Or-ce | Or-cf | Or-cg | Or-ch | Or-ci | Or-cj | Or-cl | Or-cm | Or-cn |
| Or-co | Or-cp | Or-cq | Or-cr | Or-cs | Or-ct | Or-cu | Or-cv | Or-cw | Or-cx | Or-cy | Or-cz | Or-da | Or-db | Or-dc | Or-dd | Or-de | Or-df | Or-dg | Or-dh | Or-di | Or-dj | Or-dk |
| Or-dl | Or-dm | Or-dn | Or-do | Or-dp | Or-dq | Or-dr | Or-ds | Or-dt | Or-du | Or-dv | Or-dw | Or-dx | Or-dy | Or-dz | Or-ea | Or-eb | Or-ec | Or-ed | Or-ee | Or-ef | Or-eg | Or-eh |
| Or-ek | Or-el | Or-em | Or-en | Or-fo | Or-fg | Or-fh | Or-fi | Or-fj | Or-fl | Or-fm | Or-fn | Or-fo | Or-fp | Or-fq | Or-fr | Or-fs | Or-ft | Or-fu | Or-fv | Or-fw | Or-fx | Or-fy |
| Or-fz | Or-ga | Or-gb | Or-gc | Or-gd | Or-ge | Or-gf | Or-gg | Or-gh | Or-gi | Or-gj | Or-gk | Or-gl | Or-gm | Or-gn | Or-go | Or-gp | Or-gq | Or-gr | Or-gs | Or-gt | Or-gu | Or-gv |
| Or-gv | Or-gw | Or-gx | Or-gy | Or-gz | Or-ha | Or-hb | Or-hc | Or-hd | Or-he | Or-hf | Or-hg | Or-hh | Or-hi | Or-hj | Or-hk | Or-hl | Or-hm | Or-hn | Or-ho | Or-hp | Or-hq | Or-hr |
| Or-hr | Or-hs | Or-ht | Or-hu | Or-hv | Or-hw | Or-hx | Or-hy | Or-hz | Or-ia | Or-ib | Or-ic | Or-id | Or-ie | Or-if | Or-ig | Or-ih | Or-ii | Or-ij | Or-ik | Or-il | Or-im | Or-in |
| Or-io | Or-ip | Or-iq | Or-ir | Or-is | Or-it | Or-iu | Or-iv | Or-iv | Or-iv | Or-iv | Or-iv | Or-iv | Or-iv | Or-iv | Or-iv | Or-iv | Or-iv | Or-iv | Or-iv | Or-iv | Or-iv | Or-iv |
| Or-iv | Or-iv | Or-iv | Or-iv | Or-iv | Or-iv | Or-iv | Or-iv | Or-iv | Or-iv | Or-iv | Or-iv | Or-iv | Or-iv | Or-iv | Or-iv | Or-iv | Or-iv | Or-iv | Or-iv | Or-iv | Or-iv | Or-iv |

Slope River Percentage / Fraction

| | |
|---------------|--------------|
| 0.82 - 1.00 | 1/100 - 1/20 |
| 1.00 - 3.33 | 1/30 - 1/6 |
| 3.33 - 16.67 | 1/6 - 1/4 |
| 16.67 - 25.00 | 1/4 - 1/3 |
| 25.00 - 33.33 | 1/3 - Mas |



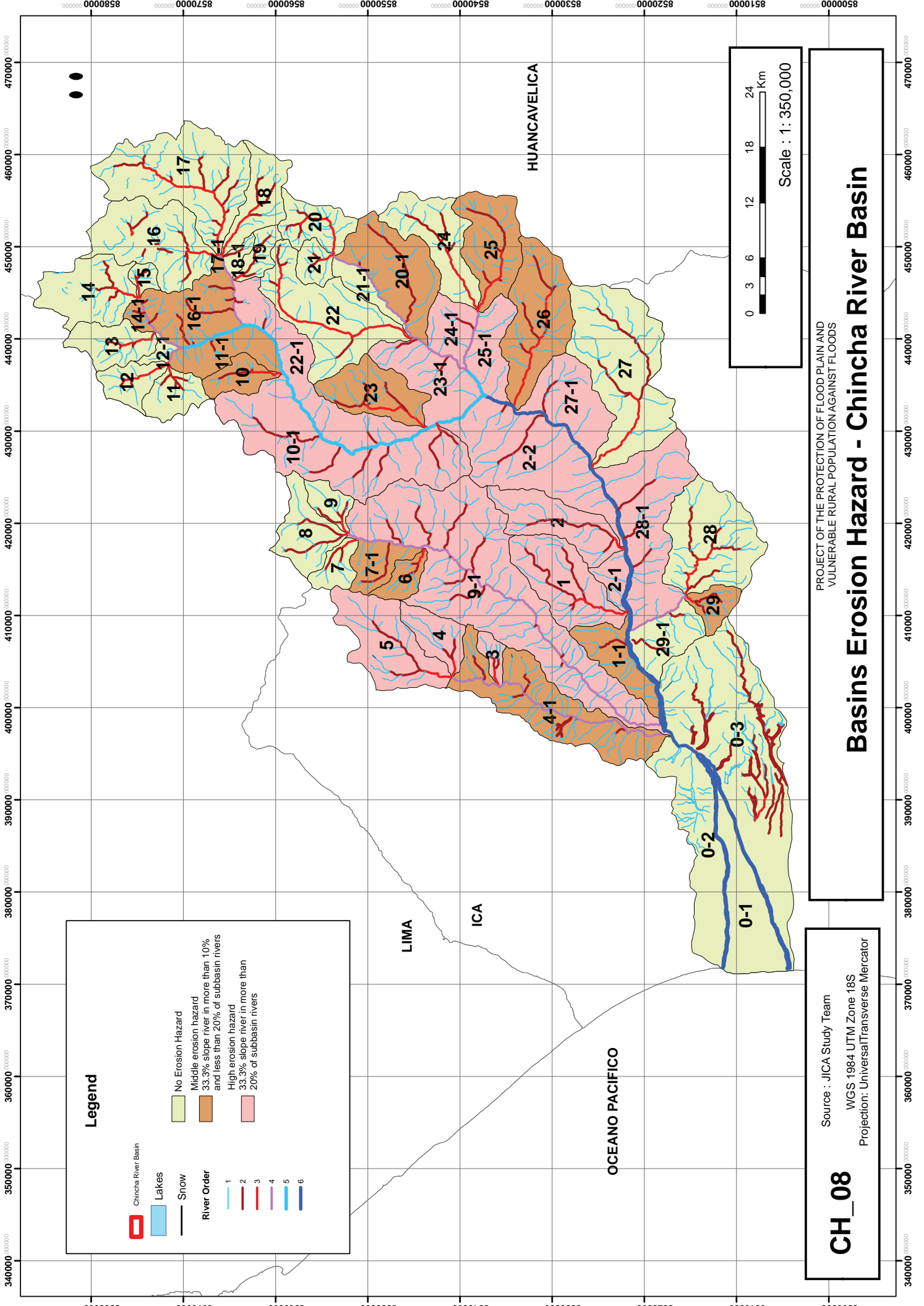
PROJECT OF THE PROTECTION OF FLOOD PLAIN AND VULNERABLE RURAL POPULATION AGAINST FLOODS

Geology / River Slope - Chincha River Basin

CH_07

Source : Geologic Data System
 JICA Study Team

WGS 1984 UTM Zone 18S
 Projection: Universal Transverse Mercator



Legend

- ▭ Chinja River Basin
- ▭ Lakes
- Snow
- River Order**
 - 1
 - 2
 - 3
 - 4
 - 5
 - 6
- ▭ No Erosion Hazard
- ▭ Middle erosion hazard
33.3% slope river in more than 10%
and less than 20% of subbasin rivers
- ▭ High erosion hazard
33.3% slope river in more than
20% of subbasin rivers

0 3 6 12 18 24 Km

Scale : 1: 350,000

PROJECT OF THE PROTECTION OF FLOOD PLAIN AND
VULNERABLE RURAL POPULATION AGAINST FLOODS

Basins Erosion Hazard - Chinja River Basin

CH_08

Source : JICA Study Team
WGS 1984 UTM Zone 18S
Projection: Universal Transverse Mercator

HUANCAVELICA

LIMA

ICA

OCEANO PACIFICO