

別添 5

MINUTES OF DISCUSSIONS
ON THE OUTLINE DESIGN STUDY
FOR THE PROJECT FOR STRENGTHENING HEALTH SERVICE NETWORK
IN SOUTHERN PROVINCES IN LAO PEOPLE'S DEMOCRATIC REPUBLIC
(EXPLANATION OF DRAFT REPORT)

In March and June 2012, the Japan International Cooperation Agency (hereinafter referred to as "JICA") dispatched the Outline Design Study Team on the Project for Strengthening Health Service Network in Southern Provinces (hereinafter referred to as "the Project") to the Lao People's Democratic Republic (hereinafter referred to as "Lao PDR"), and through discussions, field surveys and technical examination of the results in Japan, JICA prepared the draft report of the study.

In order to explain and to consult the Government of Lao PDR on the contents of the draft report, JICA sent to Lao PDR the Draft Report Explanation Team (hereinafter referred to as "the Team"), which is headed by Mr. Mitsuru Suemori, Senior Advisor, JICA from 3rd to 11th December, 2012.

As a result of the discussions, both parties confirmed the main items described on the attached sheets.

Vientiane, 11th December, 2012



Mr. Mitsuru Suemori
Senior Advisor,
Human Development Department
Japan International Cooperation Agency
Japan



Assoc. Prof. Dr. Chanphomma
VONGSAMPHANH
Director General,
Department of Health Care
Ministry of Health
Lao People's Democratic Republic

ATTACHMENT

1. Components of the Draft Report:

- 1-1 The Lao side agreed and accepted in principle the contents of the draft report explained by the Team.
- 1-2 Both sides agreed on the components of the Project shown in Annex-1.

2. Schedule of the Study:

- 2-1 The Team will conduct and explain the detail design and the tender documents in April 2013.
- 2-2 The Team will complete the final report in accordance with the confirmed items and send it to the Government of Lao PDR by May 2013.

3. Measures to be taken by the Lao side:

- 3-1 In case the Project will be implemented, the Lao side agreed to take necessary measures for the smooth implementation of the Project which were agreed in the Minutes of Discussions signed on 13 March, 2012.
- 3-2 The Ministry of Health requested that the costs to be borne by the Lao side should be less than 10% of the total amount of the Project. The Team explained that the cost for the Lao side will be approximately 2%. The Provincial Health Offices of Champasack, Salavan, Sekong, and Attapeu agreed to bare the estimated costs explained by the Team shown in Annex-2.
- 3-3 To assure effectiveness and sustainability of the Project, the Provincial Health Offices of Champasack, Salavan, Sekong, and Attapeu agreed to allocate necessary staff and cover the costs for operation and maintenance shown in Annex-3.

4. Other Relevant Issues:

4-1 Changes of the project sites

- 4-1-1 The Lao side explained that the project site for Noonsavang Health Center in Champasack Province (C17) has been changed. Both sides agreed on the new construction site for C17. The Champasack Provincial Health Office promised to submit the land certificate and UXO free certificate by 21st December, 2012.
- 4-1-2 The Lao side explained that the project site for Tateu Health Center in Sekong Province (X02) has been changed. Both sides agreed on the new construction site for X02. The Sekong Provincial Health Office promised to submit the land certificate and UXO free certificate by 21st December, 2012.

4-2 Land Certificate

The Attapeu Provincial Health Office agreed to submit the Land Certificate shown in Annex-4 by 21st December, 2012.

4-3 UXO free certificate

The Lao side agreed to clear all of the UXO from the project sites listed in Annex-4 and submit the UXO free certificate by the end of February 2013.

4-4 Health center construction

4-4-1 Both sides confirmed that the construction of Chalea Health Center in Sekong Province (X03) will be complete before the staff house will be constructed under the Project.

4-4-2 The Lao side explained that due to budget constraint they currently cannot construct the health center in Paxay Health Center in Sekong Province (X04). Therefore, the Lao side requested the Team to construct the health center for X04. Based on the discussions, the Lao side agreed to submit the confirmation letter to JICA Laos Office.

4-5 Staff house construction

4-5-1 Both sides confirmed that the construction of staff houses for the 3 sites where new health center will be constructed under the Project in Salavan (S-04: Nadoakhaang Health Center, S-17: Dong Nhai Health Center, S-18: Vang Peui Health Center) which were requested in June 2012 will be covered in the Project.

4-5-2 The Lao side requested to the Team to change the priority of Scope of Work from III to II due to the increasing needs for the construction of staff houses for Donechan Health Center (X05) and Nongkan Health Center (X08) in Sekong Province. The Team took it into consideration and agreed to construct 2 additional staff houses as requested.

4-6 Layout of the staff house

Both sides agreed to modify the layout of the staff house (entrance and space for wooden oven) from the environmental point of view shown in Annex-5.

4-7 Plan for the water supply

4-7-1 Based on the results of the additional water supply survey, the plan of the water supply has been modified. Both sides agreed on the plan shown in Annex-6.

4-7-2 The Lao side agreed that Provincial Health Offices of Champasack, Salavan, Sekong, and Attapeu will coordinate with Nam Sa-at (The National Center for Environmental Health and Water Supply) at ministerial and provincial level and other relevant organizations to manage the water supply including the water being supplied by the private sector.

4-7-3 Both sides confirmed the necessity of the protection work for water sources (borehole and spring water). The protection work will be included in the Project for the sites listed in Annex-5.

4-7-4 The Lao side agreed to provide clean water to health center by means of sterilizing coliforms.

4-8 Medical equipment

4-8-1 Both sides agreed on the list of equipment for 9 district hospitals and 67 health centers shown in Annex-7.

4-8-2 The Lao side requested ultrasound and additional equipment for the laboratory in the district hospitals to upgrade the medical services.

4-8-3 Both sides agreed that the microscope will be procured to 8 health centers shown in Annex-7. The Lao side agreed to take necessary measures such as conducting training, allocate supplies, and budget to utilize and maintain the microscope.

4-9 Medical waste management

Both sides confirmed the importance of medical waste management for health centers. Burning pit for general waste will be constructed in the Project. The Lao side will take necessary measures for proper medical waste management.

- Annex-1 Components of the Project
- Annex-2 Estimated costs to be borne by the Lao side
- Annex-3 Estimate costs to be borne by the Lao side for Operation and Maintenance
- Annex-4 Land Certificate and UXO free certificate submission list
- Annex-5 Modified layout of the staff house
- Annex-6 Water supply plan
- Annex-7 Medical equipment procurement list



Summary of the Project Components

1. Total number of the sites for construction: 58 sites
 - 1) Health Center Only: 33 sites
 - 2) Staff House Only : 14 sites
 - 3) Health center and staff house: 11 sites
 - 4) Water Supply:
 - Water connection with urban/village water supply: 4sites
 - Existing Water Source
 - Village water supply: 2 sites
 - Spring Water: 5 sites
 - Borehole: 19sites
 - (Including the test borehole during the additional water supply survey: 4 sites)
 - New construction of the well: 28 sites
 - 5) PV system: 9 sites

2. Total number of the sites for medical equipment procurement: 76 sites
 - 1) District hospital: 9 sites
 - 2) Health Center: 67 sites



COMPONENT OF THE PROJECT

Site No.	Site Name	District	Building Facilities				Infrastructure (other facilities)					Equipment
			Health Center			Staff House	Water Supply System		PV System			
			A	B	B'		Borehole	EWT	HC +/or SH	RF	WP	
A-01	Boengphoukham / Lak52	Samarckay	III			I	-	I	-	-	-	I
A-02	Halang Nhai	Samarckay		I			I	I	-	-	-	I
A-03	Dak Vieng	Xaysetha		I			-	I	-	-	-	I
A-04	Soumpoi	Soumxaay	II				II	II	-	-	-	II
A-05	Ban Thae	Soumxaay	I				I	I	-	-	-	I
A-06	Ban Mai	Soumxaay				III	-	-	-	-	-	I
A-07	Namsou	Soumxaay	III			I	-	I	I	I	-	I
A-08	Sapuan	Xaysetha				II	II	II	II	II	II	I
A-09	Keng Mhkhua	Xaysetha				II	II	II	II	II	II	I
A-10	Na Seuk	Phouvang		I			I	I	-	-	-	I
A-11	Ka Ouan	Phouvang				III	-	-	-	-	-	II
A-12	Houay Keo	Phouvang				II	II	II	-	-	-	I
A-13	Nam Kong	Phouvang				III	-	-	-	-	-	I
A-14	Bang Vilai	Soumxaay				I	-	I	I	I	I	I
A-15	Pak Bo	Soumxaay				I	I	I	I	I	I	I
A-17	Kam Khan	Samarckay				III	-	-	-	-	-	I
A-18	Languao	Samarckay				II	-	II	-	-	-	I
A-19	Somsouvy	Samarckay			*repair roof	II	-	II	-	-	-	I
A-20	Ban Meun	Soumxaay				III	-	-	-	-	-	II
A-22	Phou Home	Phouvang				II	-	II	II	II	II	I
C-01	Ban song	Pakse	II				II	II	-	-	-	II
C-02	Saphai	Sansomboun	II				II	II	-	-	-	II
C-03	Km 21th	Bachisong	II				II	II	-	-	-	II
C-04	Vernsay	Phonthong	I			II	I	I	-	-	-	I
C-05	Pathumphon	Pathumphone	I				I	I	-	-	-	I
C-06	HonyNgem	Champasak	I			I	-	I	-	-	-	I
C-07	Vernyang	Moonlapamok	III			III	-	-	-	-	-	II
C-08	Nafang/ Bankeang	Khong	II			III	-	II	-	-	-	II
C-09	Salow	Sansomboun		I			I	I	-	-	-	I
C-10	Banphon	Phonthong	I				I	I	-	-	-	I
C-11	Koudchick	Phonthong	II				-	II	-	-	-	II
C-12	Kalse	Pathumphone	I			I	I	I	-	-	-	I
C-13	Phonthong	Phonthong	I				-	I	-	-	-	I
C-14	Champasak	Champasak				III	-	-	-	-	-	I
C-15	Phaphe	Pathumphone				III	-	-	-	-	-	II
C-16	Phonsikai	Pakse	II				II	II	-	-	-	II
C-17	Noonsavang	Pakse	II				-	-	-	-	-	II
C-18	Selaboum	Sansomboun	I				I	I	-	-	-	I

Site No.	Site Name	District	Building Facilities				Infrastructure (other facilities)					Equipment	
			Health Center			Staff House	Water Supply System		PV System				
			A	B	B'		Borehole	EWT	HC +/- SH	RF	WP		
C-19	Kuangri	Bachang					-	-					II
C-20	Nam-oun	Pathoumphone	I				I	I	-	-	-	-	I
S-01	Naxay	Salavan	I				-	I	-	-	-	-	I
S-02	Beng Oudom	Salavan	I				-	-	-	-	-	-	I
S-03	Kasa Ngai	Salavan	II				II	II	-	-	-	-	II
S-04	Nadomkhuang	Salavan	I			II	-	I	-	-	-	-	I
S-05	Phakcha	Salavan	I				I	I	-	-	-	-	I
S-06	Buengxay	Salavan	I				-	I	-	-	-	-	I
S-07	Dan Nalao	Lakhomphong	II				II	II	-	-	-	-	II
S-08	Phonsung	Lakhomphong	I				-	I	-	-	-	-	I
S-09	Lak 90	Lakhomphong	I				I	I	-	-	-	-	I
S-10	Nadon Kao	Lakhomphong	I				-	I	-	-	-	-	I
S-11	Khonsay	Vapi	II				II	II	-	-	-	-	II
S-12	Sephat	Vapi	I				-	-	-	-	-	-	I
S-13	Tangio	Khongsedon	II				-	-	-	-	-	-	II
S-14	Thabuang	Khongsedon	II				-	II	-	-	-	-	II
S-15	Kenghuad	Khongsedon	II				-	-	-	-	-	-	II
S-16	Nong Kae	Laongam	I			II	I	I	-	-	-	-	I
S-17	Dong Nhai	Laongam	I				I	I	-	-	-	-	I
S-18	Vang Patti	Laongam	I			II	I	I	-	-	-	-	I
X-01	Dakdin	Dakchung				II	-	II	II	II	II	II	I
X-02	Tateu	Dakchung				I	-	I	I	I	I	I	I
X-03	Chalou	Kaleum				I	-	I	I	I	I	I	I
X-04	Paxay	Kaleum				I	-	I	-	-	-	-	I
X-05	Donechan	Lamam	II			II	II	II	-	-	-	-	II
X-06	Phou	Lamam	I			II	-	-	-	-	-	-	I
X-07	Tanoun	Lamam			I	I	-	I	-	-	-	-	I
X-08	Nongkam	Tateng	II			II	-	II	-	-	-	-	II
X-09	Yup	Tateng		I		II	-	I	-	-	-	-	I
Total excluding SOW III			38	5	1	25	28	52	9	9	8	8	57

EWT: Elevated Water Tank RF: For vaccine refrigerator WP: For water pump

I: SOW I II: SOW II III: SOW III

39

Estimated Costs to be borne by Champasak Provincial Health Office (PHO) Unit: Thousand Kip

Particulars	Unit	Unit Price	SOW-I		Total		Remarks
			Qty	Amount	Qty	Amount	
Items to be covered by the Recipient							
- Site clearance including tree cutting and removal of roots	LS	-	1	21,107.46	1	67,680.50	See Table-A
- Water connection with urban water supply network	sites	1,535.00	0	0.00	1	1,535.00	C-17 only
- Water connection with community water supply network	sites	1,535.00	0	0.00	0	0.00	
- Power connection with low voltage power supply network	sites	1,500.00	3	4,500.00	8	12,000.00	
- Power connection with medium voltage power supply network	sites	128,362.80	2	256,725.60	2	256,725.60	Including 25KVA transformer
- Additional cost for extension of power supply lines (LV/MV)	LS	-	1	41,240.00	1	49,335.00	See Table-B
- Provision of furniture for staff houses and health centers	LS	-	1	56,879.30	1	89,593.20	See Table-C
Total				380,452.36		476,869.39	

Table-A

SITE No.	Name	SOW	Remarks	Site condition/ Work required ¹	Evaluation ²	Area (uf)	Unit rate	Amount
C-01	Saphong	I	New site	no need grading	o	960	0.66	629.76
C-02	Saphong	I	New site	no need grading	o	960	0.66	629.76
C-03	Saphong	I	New site	no need grading	o	960	0.66	629.76
C-04	Vernsay	I	New site	no need grading	o	960	0.66	629.76
C-05	Patnamphon	I	New site	no need grading	Δ	980	8.69	8,518.16
C-06	HouyNgem	I	New site	no need grading	o	940	0.66	616.64
C-07	Saphong	I	New site	no need grading	o	960	0.66	629.76
C-08	Saphong	I	New site	no need grading	o	960	0.66	629.76
C-09	Salow	I	New site	Access road to be graded	o	940	0.66	616.64
C-10	Banphon	I	New site	no need grading	o	1,020	0.66	669.12
C-11	Saphong	I	New site	no need grading	o	960	0.66	629.76
C-12	Kalac	I	New site	Land to be clear or gaining	Δ	940	8.69	8,170.48
C-13	Pbonthong	I	Village house	no need grading	o	980	0.66	642.88
C-14	Saphong	I	New site	no need grading	o	960	0.66	629.76
C-15	Saphong	I	New site	no need grading	o	960	0.66	629.76
C-16	Saphong	I	New site	no need grading	o	960	0.66	629.76
C-18	Selabom	I	School land	no need grading	o	948	0.66	621.89
C-20	Nam-om	I	New site	no need grading	o	948	0.66	621.89
SOW1						8,656		21,107.46

Table-B

SITE No.	Name	SOW	Line	Cost of Line Extension				Cost of Pole Installation				Total Amount
				Unit	Qty	U/P	Amount	Unit	Qty	U/P	Amount	
C-06	HonyNgern	I	MV	km	200	65.00	13,000.00	No.	4	2,870.00	11,480.00	24,480.00
C-09	Salaw	I	LV	km	80	45.00	3,600.00	No.	2	2,870.00	5,740.00	9,340.00
C-10	Bamphon	I	LV	km	20	45.00	900.00	No.	1	2,870.00	2,870.00	3,770.00
C-20	Nam-orm	I	MV	km	12	65.00	780.00	No.	1	2,870.00	2,870.00	3,650.00
SOW1		I									Sub-total (SOW1)	41,240.00
SOW2											Sub-total (SOW2)	2,000.00

Table-C

	HC-A	1,660.50	HC-B	1,414.50	HC-B'	1,414.50	SH	21,090.40	Total Amount
SOW1	8	C-04,C-05,C-06,C-10, C-12,C-13,C-18,C-20	1	C-09	0	C-09	2	C-06,C-12,	56,879.30

Estimated Costs to be borne by Salavan Provincial Health Office (PHO)

Unit: Thousand Kip

Particulars	Unit	Unit Price	SOW-I		SOW-II		Total		Remarks
			Qty	Amount	Qty	Amount	Qty	Amount	
Items to be covered by the Recipient									
- Site clearance including tree cutting and removal of roots	LS	-	1	66,409.18			1	78,439.56	See Table-A
- Water connection with urban water supply network	sites	1,535.00	0	0.00			1	1,535.00	S-13 only
- Water connection with community water supply network	sites	1,535.00	0	0.00			1	1,535.00	S-12 only
- Power connection with low voltage power supply network	sites	1,500.00	11	16,500.00			15	22,500.00	
- Power connection with medium voltage power supply network	sites	128,362.80	1	128,362.80			2	256,725.60	Including 25KVA transformer
- Additional cost for extension of power supply lines (LV/MV)	LS	-	1	23,165.00			1	26,935.00	See Table-B
- Provision of furniture for staff houses and health centers	LS	-	1	19,926.00			1	93,160.20	See Table-C
Total				254,362.98				480,830.56	

Table-A

SITE No.	Name	SOW	Remarks	Site condition/ Work required ¹	Evaluation ²	Area (m ²)	Unit rate	Amount
S-01	Naxay	I	Same site	no need grading	o	1,012	0.66	663.87
S-02	Beng Oudom	I	New site	no need grading	Δ	1,024	8.69	8,900.61
S-04	Nadonkhuang	I	New site	Adjacent area to be filled	Δ	968	8.69	8,413.86
S-05	Phakha	I	Same site	no need grading	o	1,040	0.66	682.24
S-06	Buangray	I	Same site	no need grading	o	980	0.66	642.88
S-08	Phonsung	I	Same site	no need grading	o	1,000	0.66	656.00
S-09	Lak 90	I	New site	no need grading	Δ	940	8.69	8,170.48
S-10	Nadou Kao	I	New site	no need grading	Δ	980	8.69	8,518.15
S-12	Sapbat	I	New site	no need grading	Δ	1,040	8.69	9,039.68
S-16	Nong Kae	I	New site	site covered mostly by wood, cutting trees and grading is required	x	1,020	19.11	19,488.12
S-17	Dong Nhai	I	New site	no need grading	o	932	0.66	611.39
S-18	Vang Peui	I	New site	no need grading	o	948	0.66	621.89
SOW1						11,884		66,409.18

Table-B

SITE No.	Name	SOW	Line	Cost of Line Extension			Cost of Pole Installation			Total Amount		
				Unit	Qty	U/P	Amount	Unit	Qty		U/P	Amount
S-04	Nadonkhuang	I	MV	lm	20	65.00	1,300.00	No.	1	2,870.00	2,870.00	4,170.00
S-13	Sapbat	I	LV	lm	120	45.00	5,400.00	No.	2	2,870.00	5,740.00	11,140.00
S-16	Nong Kae	I	LV	lm	20	45.00	900.00	No.	1	2,870.00	2,870.00	3,770.00
S-18	Vang Peui	I	LV	lm	27	45.00	1,215.00	No.	1	2,870.00	2,870.00	4,085.00
SOW1		I								Sub-total (SOW1)		23,165.00

Table-C

	HC-A	1,680.50	HC-B	1,414.50	HC-B'	1,414.50	SH	21,090.40	Total Amount
SOWI	12	S-01,S-02,S-04,S-05,S-06,S-08, S-09,S-10,S-12,S-16,S-17,S-18							19,926.00

(6)

Estimated Costs to be borne by Sekong Provincial Health Office (PHO)

Unit: Thousand Kip

Particulars	Unit	Unit Price	SOW-I		SOW-II		Total		Remarks
			Qty	Amount	Qty	Amount	Qty	Amount	
Items to be covered by the Recipient									
- Site clearance including tree cutting and removal of roots	LS	-	1	42,527.82			1	59,746.51	See Table-A
- Water connection with urban water supply network	sites	1,535.00	1	1,535.00			1	1,535.00	X-06 only
- Water connection with community water supply network	sites	1,535.00	0	0.00			0	0.00	
- Power connection with low voltage power supply network	sites	1,500.00	4	6,000.00			6	9,000.00	
- Power connection with medium voltage power supply network	sites	128,362.80	0	0.00			0	0.00	Including 25KVA transformer
- Additional cost for extension of power supply lines (LV/MV)	LS	-	1	18,230.00			1	22,000.00	See Table-B
- Provision of furniture for staff houses and health centers	LS	-	1	88,851.10			1	158,272.30	See Table-C
Total				185,608.92				250,553.81	

Table-A

SITE No.	Name	SOW	Remarks	Site condition/ Work required *	Evaluation **	Area (m ²)	Unit rate	Amount
X-02	Datan	I	New site	Remove trees and top soil	Δ	1,000	8.69	8,692.00
X-03	Chalea	I	Same site	Remove trees and top soil	Δ	1,020	8.69	8,865.84
X-04	Paxay	I	New site	Remove trees and top soil	Δ	920	8.69	7,996.64
X-06	Phon	I	Same site	no need grading	o	964	0.66	632.38
X-07	Tanum	I	New site	need cutting small trees and grass, grading is also needed	Δ	980	8.69	8,518.16
X-09	Yup	I	New site	Land to be cleared or graded	Δ	900	8.69	7,822.80
SOW1						5,784		42,527.82

Table-B

SITE No.	Name	SOW	Line	Cost of Line Extension				Cost of Pole Installation				Total Amount
				Unit	Qty	U/P	Amount	Unit	Qty	U/P	Amount	
X-04	Paxay	I	LV	km	50	45.00		No.	1	2,870.00	2,870.00	5,120.00
SOW1		I										18,230.00

Table-C

	HC-A	1,560.50	HC-B	1,414.50	HC-B'	1,414.50	SH	21,090.40	Total Amount
SOW1	1	X-06	1	X-07	1	X-09	4	X-02, X-03, X-04, X-07	88,851.10

Estimated Annual Operation Costs for Attapeau Provincial Office (PHO)

Unit: Thousand Kip

Particulars of Expenses	Qty	Unit Price	Amount	Remarks
Salaries for the additional staff required	4	538.76	25,860	Salary for Primary Nurse
- Allowance for the outreach activities	4	134.69	6,465	Allowed 25% of salaries
Electricity Charge for HC Type A	2	0.34	2,487	10.02kWh/day
Electricity Charge for HC Type B	3	0.34	3,552	9.54kWh/day
Electricity Charge for HC Type B	0	0.34	0	10.02kWh/day
Electricity Charge for Staff House	10	0.34	2,341	1.886kWh/day
Water Rate for City Water Supply	0	1.38	0	4.15m ³ /day
Water Rate for Community Water Supply	0	1.38	0	4.15m ³ /day
Fuel for Motor Cycle	14	10.08	33,869	200/motorcycle/month
Chlorine	3	20.00	21,900	1.0m ³ /day

Estimated Maintenance Costs for Facilities for Attapeau Provincial Office (PHO)

Unit: Thousand Kip

Particulars of Expenses	Qty	Unit Price	Frequency	Amount
- External painting	15	5,120	Every 10 years	76,800
- Internal painting incl. doors, built-in furniture	15	10,240	Every 5 years	153,600
- Painting and repairs of doors/ windows	15	2,560	Every 5 years	38,400
- Repairs of roof and cleaning of gutters	15	400	Every 5 years	6,000
- Removal of scum out of septic tank	15	500	Every two years	7,500
- Cleaning of manholes	15	2,000	Every 5 years	30,000
- Changing light bulbs/ tubes	15	320	Every 2 year	4,800
- Periodical maintenance and repairs	6	8,400	Every year	50,400
- Renewal of batteries	6	34,800	Every 5 years	208,800
- Periodical maintenance and repairs	11	235	Every year	2,585
- Renewal of water pump	11	13,300	Every 10 years	146,300

Estimated Maintenance Costs for Equipment for Attapeau Provincial Office (PHO)

Unit: Thousand Kip

Particulars of Expenses	Qty	Unit Price	Frequency	Amount
- Replacement of packing	13	53.30	Every 2 years	693
- Replacement of pipe heater	19	246.00	Every 2 years	4,674
- Tire change	14	24.60	Once a year	344
- Oil change	14	82.00	Once a year	1,148
- Replacement of brake cable	14	615.00	Every 3 years	8,610
- Replacement of V-belt for power transmission device	14	512.50	Every 10,000km	7,175
- Replacement of air cleaner element for power transmission device	14	30.75	Every 20,000km	431
- Replacement of oil filter for engine	14	153.75	Every 15,000km	2,153
- Replacement of air cleaner element for engine	14	41.00	Every 20,000km	574

Estimated Annual Operation Costs for Champasak Provincial Office (PHO)

Unit: Thousand Kip

Particulars of Expenses	Qty	Unit Price	Amount	Remarks
Salaries for the additional staff required	27	598.76	174,558	Salary for Primary Nurse
- Allowance for the outreach activities	27	134.69	43,640	Allowed 25% of salaries
Electricity Charge for HC Type A	15	0.34	18,652	10.02kWh/day
Electricity Charge for HC Type B	1	0.34	1,184	9.54kWh/day
Electricity Charge for HC Type B	0	0.34	0	10.02kWh/day
Electricity Charge for Staff House	3	0.34	702	1.886kWh/day
Water Rate for City Water Supply	1	1.38	2,090	4.15m ³ /day
Water Rate for Community Water Supply	0	1.38	0	4.15m ³ /day
Fuel for Motor Cycle**	19	10.08	45,965	200/motorcycle/month
Chlorine	3	20.00	21,900	1.0m ³ /day

Estimated Maintenance Costs for Facilities for Champasak Provincial Office (PHO)

Unit: Thousand Kip

Particulars of Expenses	Qty	Unit Price	Frequency	Amount
- External painting	19	5,120	Every 10 years	97,280
- Internal painting incl. doors, built-in furniture	19	10,240	Every 5 years	194,560
- Painting and repairs of doors/windows	19	2,560	Every 5 years	48,640
- Repairs of roof and cleaning of gutters	19	400	Every 5 years	7,600
- Removal of scum out of septic tank	19	300	Every two years	9,500
- Cleaning of manholes	19	2,000	Every 5 years	38,000
- Changing light bulbs/ tubes	19	320	Every 2 year	6,080
- Periodical maintenance and repairs	0	8,400	Every year	0
- Renewal of batteries	0	34,800	Every 5 years	0
- Periodical maintenance and repairs	15	235	Every year	3,525
- Renewal of water pump	15	13,300	Every 10 years	199,500

Estimated Maintenance Costs for Equipment for Champasak Provincial Office (PHO)

Unit: Thousand Kip

Particulars of Expenses	Qty	Unit Price	Frequency	Amount
- Replacement of packing	19	53.30	Every 2 years	1,013
- Replacement of pipe heater	19	246.00	Every 2 years	4,574
- Tire change	19	24.60	Once a year	467
- Oil change	19	82.00	Once a year	1,558
- Replacement of brake cable	19	615.00	Every 3 years	11,685
- Replacement of V-belt for power transmission device	19	512.50	Every 10,000km	9,738
- Replacement of air cleaner element for power transmission device	19	30.75	Every 20,000km	584
- Replacement of oil filter for engine	19	153.75	Every 15,000km	2,921
- Replacement of air cleaner element for engines	19	41.00	Every 20,000km	779

(B)

[Handwritten signature]

Estimated Annual Operation Costs for Salavan Provincial Office (PHO)

Unit: Thousand Kip

Particulars of Expenses	Qty	Unit Price	Amount	Remarks
Salaries for the additional staff required	13	538.76	84,047	Salary for Primary Nurse
- Allowance for the outreach activities	13	134.69	21,012	Allowed 25% of salaries
Electricity Charge for HC Type A	18	0.34	22,383	10.02kWh/day
Electricity Charge for HC Type B	0	0.34	0	9.54kWh/day
Electricity Charge for HC Type B	0	0.34	0	10.02kWh/day
Electricity Charge for Staff House	3	0.34	702	1.886kWh/day
Water Rate for City Water Supply	1	1.38	2,090	4.15m ³ /day
Water Rate for Community Water Supply	1	1.38	2,090	4.15m ³ /day
Fuel for Motor Cycle	12	10.08	29,030	200/motorcycle/month
Chlorine	3	20.00	21,900	1.0m ³ /day

Estimated Maintenance Costs for Facilities for Salavan Provincial Office (PHO)

Unit: Thousand Kip

Particulars of Expenses	Qty	Unit Price	Frequency	Amount
- External painting	21	5,120	Every 10 years	107,520
- Internal painting incl. doors, built-in furniture	21	10,240	Every 5 years	215,040
- Painting and repairs of doors/ windows	21	2,560	Every 5 years	53,760
- Repairs of roof and cleaning of gutters	21	400	Every 5 years	8,400
- Removal of scum out of septic tank	21	500	Every two years	10,500
- Cleaning of manholes	21	2,000	Every 5 years	42,000
- Changing light bulbs/ tubes	21	320	Every 2 year	6,720
- Periodical maintenance and repairs	0	8,400	Every year	0
- Renewal of batteries	0	34,800	Every 5 years	0
- Periodical maintenance and repairs	15	235	Every year	3,525
- Renewal of water pump	15	13,300	Every 10 years	199,500

Estimated Maintenance Costs for Equipment for Salavan Provincial Office (PHO)

Unit: Thousand Kip

Particulars of Expenses	Qty	Unit Price	Frequency	Amount
- Replacement of packing	18	53.30	Every 2 years	959
- Replacement of pipe heater	15	246.00	Every 2 years	3,690
- Tire change	12	24.60	Once a year	295
- Oil change	12	82.00	Once a year	984
- Replacement of brake cable	12	615.00	Every 3 years	7,380
- Replacement of V-belt for power transmission device	12	512.50	Every 10,000km	6,150
- Replacement of air cleaner element for power transmission device	12	30.75	Every 20,000km	369
- Replacement of oil filter for engine	12	153.75	Every 15,000km	1,845
- Replacement of air cleaner element for engine	12	41.00	Every 20,000km	492

(B)

Estimated Annual Operation Costs for Sekong Provincial Office (PHO)

Unit: Thousand Kip

Particulars of Expenses	Qty	Unit Price	Amount	Remarks
Salaries for the additional staff required	14	538.76	90,512	Salary for Primary Nurse
- Allowance for the outreach activities	14	134.69	22,628	Allowed 25% of salaries
Electricity Charge for HC Type A	3	0.34	3,730	10.02kWh/day
Electricity Charge for HC Type B	1	0.34	1,184	9.54kWh/day
Electricity Charge for HC Type B	1	0.34	1,243	10.02kWh/day
Electricity Charge for Staff House	9	0.34	2,106	1.886kWh/day
Water Rate for City Water Supply	1	1.38	2,090	4.15m ³ /day
Water Rate for Community Water Supply	0	1.38	0	4.15m ³ /day
Fuel for Motor Cycle	8	10.08	19,354	20\$/motorcycle/month
Chlorine	1	20.00	7,300	1.0m ³ /day

Estimated Maintenance Costs for Facilities for Sekong Provincial Office (PHO)

Unit: Thousand Kip

Particulars of Expenses	Qty	Unit Price	Frequency	Amount
- External painting	14	5,120	Every 10 years	71,680
- Internal painting incl. doors, built-in furniture	14	10,240	Every 5 years	143,360
- Painting and repairs of doors/ windows	14	2,560	Every 5 years	35,840
- Repairs of roof and cleaning of gutters	14	400	Every 5 years	5,600
- Removal of scum out of septic tank	14	500	Every two years	7,000
- Cleaning of manholes	14	2,000	Every 5 years	28,000
- Changing light bulbs/ tubes	14	320	Every 2 year	4,480
- Periodical maintenance and repairs	3	8,400	Every year	25,200
- Renewal of batteries	3	34,800	Every 5 years	104,400
- Periodical maintenance and repairs	9	235	Every year	2,115
- Renewal of water pump	9	13,300	Every 10 years	119,700

Estimated Maintenance Costs for Equipment for Sekong Provincial Office (PHO)

Unit: Thousand Kip

Particulars of Expenses	Qty	Unit Price	Frequency	Amount
- Replacement of packing	9	53.30	Every 2 years	480
- Replacement of pipe heater	9	246.00	Every 2 years	2,214
- Tire change	8	24.60	Once a year	197
- Oil change	8	82.00	Once a year	656
- Replacement of brake cable	8	615.00	Every 3 years	4,920
- Replacement of V-belt for power transmission device	8	512.50	Every 10,000km	4,100
- Replacement of air cleaner element for power transmission device	8	30.75	Every 20,000km	246
- Replacement of oil filter for engine	8	153.75	Every 15,000km	1,230
- Replacement of air cleaner element for engine	8	41.00	Every 20,000km	328

(16)

Land certificate and UXO free certificate submission list

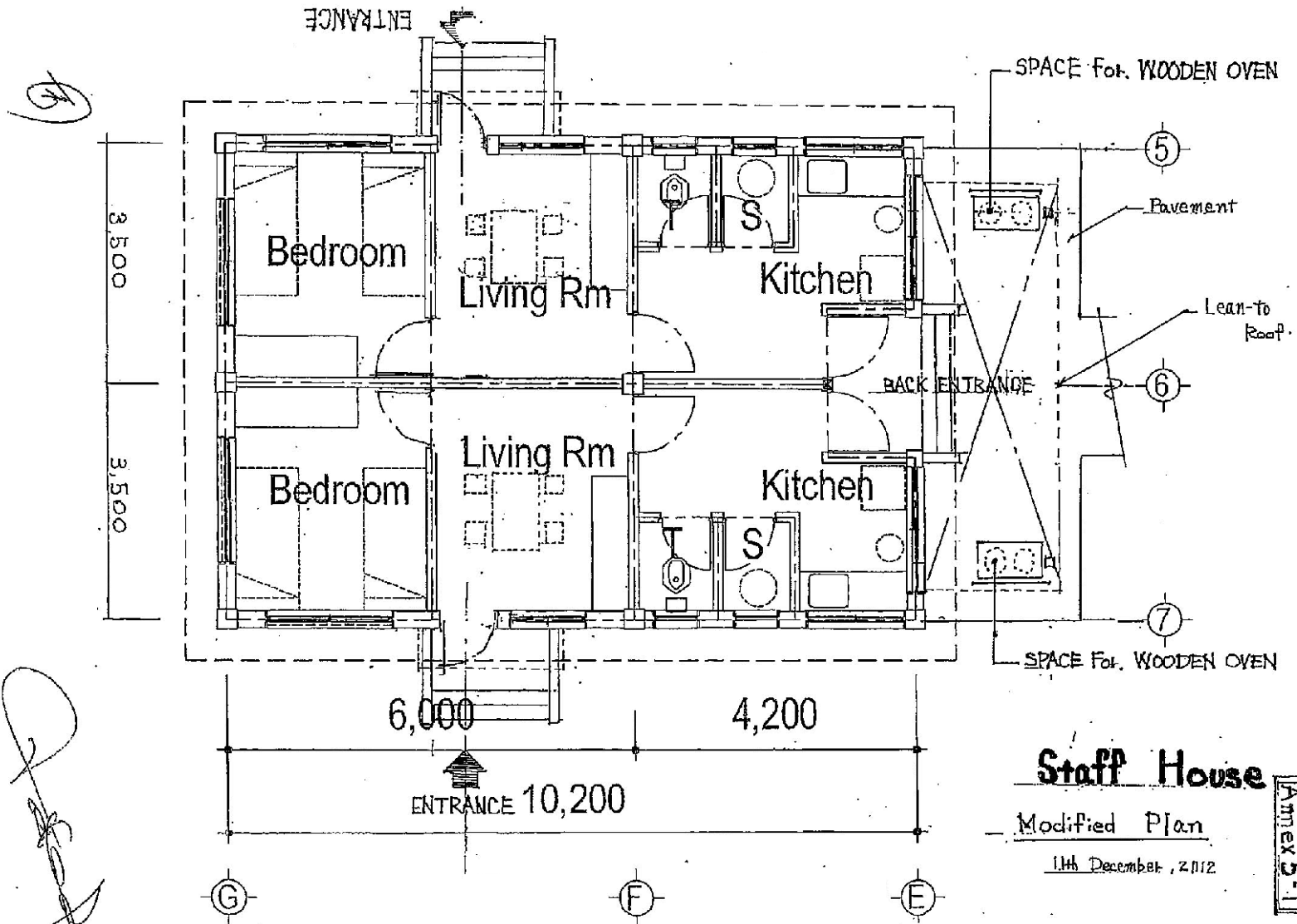
M/M	Name	District	UXO Free Certificate issued UXO Lao by end of Feb.	Existing Document	Land Certificate	Remarks
Attapeu Province	A-01	Benghoukham / Lak52	Samarakay	-	Head of Village	Same site
	A-02	Halang Nhat	Samarakay	✓	Head of Village	New site
	A-03	Dak Vieng	Xaysetha	-	UXO LAO Attapeu	New site
	A-04	Sompoi	Sanamxay	✓	Head of Village	New site
	A-05	Ban Thae	Sanamxay	✓	No info	New site
	A-07	Namsou	Sanxay	-	-	Same site
	A-08	Sapuan	Xaysetha	-	-	Same site
	A-09	Kong Mikhua	Xaysetha	-	-	Same site
	A-10	Na Senak	Phouyong	✓	Head of Village	New site
	A-12	Hansy Keo	Phouyong	-	UXO LAO Attapeu	Same site
	A-14	Beng Vilai	Sanamxay	-	Head of Village	Same site
	A-15	Pak Bo	Sanamxay	-	-	Same site
	A-18	Langdo	Samarakay	-	-	Same site
	A-19	Somsanony	Samarakay	-	-	Same site
	A-22	Phou Horne	Phouyong	-	-	Same site
Champasack Province	C-01	Ban song/ Ban Hair	Paksane	✗	UXO Lao Champasack	New site
	C-02	Saphai	Sansomboun	-	-	Same site
	C-03	Km 21th	Bachiang	✗	Head of Village	School land
	C-04	Vernsay	Phonthong	✗	UXO Lao Champasack	New site
	C-05	Pahumphon	Pathoumphone	✗	UXO Lao Champasack	New site
	C-06	Houy Nigern	Champasack	✗	UXO Lao Champasack	New site
	C-08	Nafang/ Bankeang	Khong	✗	UXO Lao Champasack	New site
	C-09	Salou	Sansomboun	✓	-	New site
	C-10	Banphan	Phonthong	✗	UXO Lao Champasack	New site
	C-11	Koudchick	Phonthong	✗	Head of Village	Same site
	C-12	Kalae	Pathoumphone	✗	UXO Lao Champasack	New site
	C-13	Phonthong	Phonthong	✗	UXO Lao Champasack	Village house
	C-16	Phonsikai	Paksane	✗	UXO Lao Champasack	New site
	C-17	Noousavaag	Paksane	✓	-	New site
	C-18	Selabon	Sansomboun	✗	UXO Lao Champasack	School land
C-20	Nam-om	Pathoumphone	✗	UXO Lao Champasack	New site	
Salavan Province	S-01	Naxay	Salavan	-	-	Same site
	S-02	Beng Oudom	Salavan	✗	UXO LAO	New site
	S-03	Kasa Ngai	Salavan	✗	UXO LAO	New site
	S-04	Nadonkhuang	Salavan	✗	UXO LAO	New site
	S-05	Phalldha	Salavan	-	-	Same site
	S-06	Buengxay	Salavan	-	-	Same site
	S-07	Dan Nalao	Lakhonpheng	✗	UXO LAO	New site
	S-08	Phonsung	Lakhonpheng	-	-	Same site
	S-09	Lak 90	Lakhonpheng	✗	UXO LAO	New site
	S-10	Nadon Kao	Lakhonpheng	✗	UXO LAO	New site
	S-11	Khomsay	Vapi	-	-	Same site
	S-12	Saphat	Vapi	✗	UXO LAO	New site
	S-13	Tanpio	Khongsedon	-	-	Same site
	S-14	Thahung	Khongsedon	-	-	Same site
	S-15	Kanghuad	Khongsedon	-	-	Same site
S-16	Nong Kae	Laongam	-	UXO LAO	New site	
S-17	Dong Nhal	Laongam	-	UXO LAO	New site	
S-18	Yang Peui	Laongam	-	UXO LAO	New site	
Sekong Province	X-01	Dakéin	Dakchung	-	-	Same site
	X-02	Tatea	Dakchung	✓	Head of Village	New site
	X-03	Chalea	Kaleum	-	-	Same site
	X-04	Paxay	Kaleum	✓	Head of Village	New site
	X-05	Donchan	Lanam	✓	Head of Village	New site
	X-06	Phon	Lanam	-	Head of Village	Same site
	X-07	Taam	Lanana	✓	Head of Village	New site
	X-08	Nongkan	Tateng	-	Head of Village	Temple
	X-09	Yup	Tateng	✓	Head of Village	New site

* Need Land Certificate (deadline: 21 December, 2012)

✓ Need UXO Free Certificate Issued by UXO Lao (deadline: February 2013)

✗ Document already received

A441



Staff House

Modified Plan

11th December, 2012

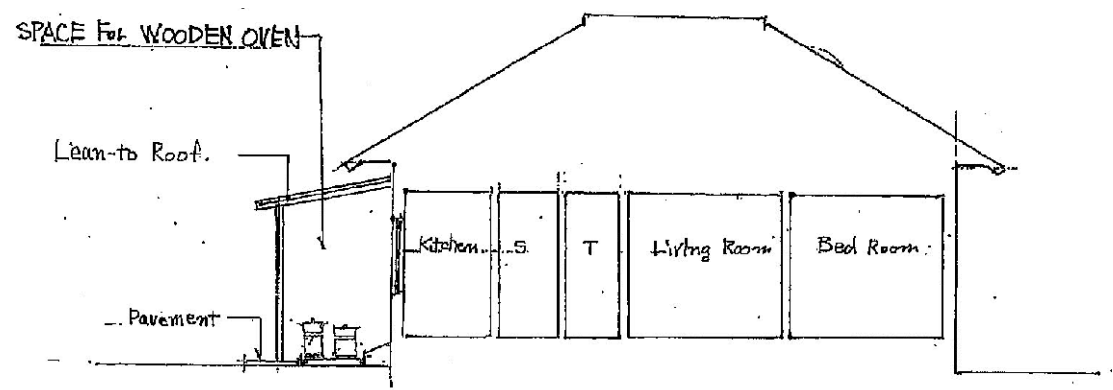
Amex 5-1

51

Staff House.

Modified Plan.

11th December, 2012



A4-42

Annex 5-2

Water Supply Plan

No	Province	District	EC Name	Drilling Quick-C, No. Month (X)	Spring Water	Public Water Supply System	Remarks	Water Supply Facility					Drilling Depth (m)	Static Water Level (m)	Dynamic Water Level (m)	Success Rate of Yield (%)	Success Rate of Water Quality (%)	Total Success Rate (%)	
								Tower	Tank	Pump	Protect	Other							Tank Volume (m3)
A01	Attapeu	Semexoy	Bengphonkha m / Lat-52	X			Existing System	1	1		1								
A02	Attapeu	Semexoy	Halong Nhal	O				1	1	1	1	60	8	12	100	90			
A03	Attapeu	Kayathla	Dak Yang	X			Test Borehole	1	1	1	1	2.5							
A04	Attapeu	Semexoy	Soupcal	O				1	1	1	1	1	55	15	20	100	95	95	
A05	Attapeu	Semexoy	Das Tille	O				1	1	1	1	1	60	10	15	100	90	90	
A07	Attapeu	Semexoy	Namson	X	O		Existing CFW	2 (Tall , Low H)	2	1		Pipe to SR (200m) + Roofing Tank	1						
A08	Attapeu	Kayathla	Sepuan	O				1	1	1	1	1	60	10	15	100	90	90	
A09	Attapeu	Kayathla	Keng Mikhna	O			Existing system has high Electrical Conductivity	1	1	1	1	1	60	10	15	100	70	70	
A10	Attapeu	Phouvang	Ni-Souk	O				1	1	1	1	2.5	60	10	15	100	70	70	
A12	Attapeu	Phouvang	Elouy Keo	O				1	1	1	1	2.5	50	20	30	70	90		
A14	Attapeu	Semexoy	Bong Vilai	X			Existing Handpump well	1	1	1	1	Solar Panel + Sealing	2.5						
A15	Attapeu	Semexoy	Fak Bo	O			Manganese has detected very high.	1	1	1	1	Solar Panel	2.5	60	10	15	100	70	70
A18	Attapeu	Semexoy	Longao	X			Existing System	1	1		1								
A19	Attapeu	Semexoy	Souannouy	X			Existing System	1	1		1								
A22	Attapeu	Phouvang	Ehou Khone	X			Existing System	1	1		1								
C01	Champasak	Falae	Bongsoong	O				1	1	1	1	1	45	10	15	100	90	90	
C02	Champasak	Sansomboun	Syphai	O			Private company water supply from Mekong river water	1	1	1	1	1	50	10	15	100	95	95	
C03	Champasak	Bachong	Kaithab	O				1	1	1	1	2.5	35	15	20	100	95	95	
C04	Champasak	Phouhong	Vouacal	O			Existing well has very high Turbidity	1	1	1	1	1	50	10	15	100	90	90	
C05	Champasak	Pathoumphone	Pathoumphone	O				1	1	1	1	1	55	15	20	100	95	95	
C06	Champasak	Champasack	Houygan	X			Well drilling is required at implementation stage.	1	1	1	1	Closing	1						
C08	Champasak	Khong	Naphang	X			Piping from JICA well (300m)	1	1	1	1	Public Tap + Piping (300m)	2.5						
C09	Champasak	Sansomboun	Salou	O				1	1	1	1	1	50	10	15	100	95	95	
C10	Champasak	Phouhong	Bampas	O				1	1	1	1	1	60	15	20	100	90	90	
C11	Champasak	Phouhong	Koudhick	X			Existing well in village cluster office	1	1	1	1	1	1	55	15	20	100	95	95
C12	Champasak	Pathoumphone	Kaala	O				1	1	1	1	1	55	15	20	100	95	95	
C13	Champasak	Phouhong	Faananhong	X			Existing well in village cluster office	1	1	1	1	1	1	55	15	20	100	95	95
C15	Champasak	Falae	Phouacal	O				1	1	1	1	1	50	10	15	100	95	95	
C17	Champasak	Falae	Noussoung	X	O		Falae urban water supply												
C18	Champasak	Sansomboun	Sidabon	O				1	1	1	1	2.5	50	10	15	100	95	95	
C20	Champasak	Pathoumphone	Nan-om	O				1	1	1	1	1	55	15	20	100	95	95	
S01	Salavan	Salavan	Nesay	X			Handpump Well behind EC	1	1	1	1	Sealing of Casing	1						
S02	Salavan	Salavan	Bong Oudon	X	O		Existing Water Supply System of Community					Piping (500m)							
S03	Salavan	Salavan	Kase	O				1	1	1	1	1	50	10	15	100	95	95	

Handwritten signature/initials.

Handwritten signature/initials.

Water Supply Plan

No	Province	District	HC News	Drilling (Need: O, No Need: X)	Spring Water	Public Water Supply System	Remarks	Water Supply Facility					Drilling Depth (m)	Static Water Level (m)	Dynamic Water Level (m)	Success Rate of Yield (%)	Success Rate of Water Quality (%)	Total Success Rate (%)	
								Tower	Tank	Pump	Protect	Others							Tank Volume (m ³)
S04	Salavan	Salavan	Naiachauand	X			Test Borehole	1	1	1	1	1							
S05	Salavan	Loangan	Phakkhala	O				1	1	1	1	1	60	10	15	100	90	90	
S05	Salavan	Loangan	Buangzay	X			BICA well in front of HC	1	1	1	1	Public Tap	2.5						
S07	Salavan	Lakhoiphong	Dai Nalao	O				1	1	1	1	1	60	10	15	100	90	90	
S08	Salavan	Lakhoiphong	Phouang	X			Existing System	1	1	1	1	1							
S09	Salavan	Lakhoiphong	Lak 90	O				1	1	1	1	1	60	10	15	100	90	90	
S10	Salavan	Lakhoiphong	Nadon Kao	X			Existing well in village cluster office	1	1	1	1	1							
S11	Salavan	Vepi	Khonsay	O			Water is shortage. Water committee is not active	1	1	1	1	1	1	60	10	15	100	90	90
S12	Salavan	Vepi	Sephet	X		O	Existing Water Supply System of Community												
S13	Salavan	Khongsedon	Tanglo	X		O	Khongsedon Urban Water Supply												
S14	Salavan	Khongsedon	Thabuang	X			Existing System	1	1	1	1	1							
S15	Salavan	Khongsedon	Kenghad	X		O	Existing Water Supply System of Community												
S16	Salavan	Loangan	Noong Kae	O			QFW has Colliform	1	1	1	1	1	1	80	30	40	70	90	69
S17	Salavan	Loangan	Doong Nhai	O			Existing water supply system is using River Water	1	1	1	1	1	1	80	30	40	70	90	69
S18	Salavan	Loangan	Vang Peui	O			Private secure water supply	1	1	1	1	1	1	80	30	40	70	90	69
X01	Sekong	Daichung	Dakdin	X	O		Water supply system will be constructed from existing system	1	1	2	1	Protect of Spring + Reserve Tank + Solar Panel	2.5						
X02	Sekong	Daichung	Tava	X	O		QFW will be constructed by Poverty Reduction Fund	1	1	1	1	Solar Panel	1						
X03	Sekong	Kaloun	Chalna	X	O		Existing QFW	1	1	1	1	Protect of Spring + Reserve Tank + Solar Panel	1						
X04	Sekong	Kaloun	Phay	X	O		Management has decreased from Test Borehole. Existing QFW shall be used.	1	1	1	1	Piping from QFW Tank (300m) + Reserve Tank	1						
X05	Sekong	Lamam	Desechan	O				1	1	1	1	1	60	10	15	100	90	90	
X06	Sekong	Lamam	Phoa	X		O	Sekong Urban Water Supply												
X07	Sekong	Lamam	Tacum	X			Test Borehole	1	1	1	1	1							
X08	Sekong	Tatoung	Dama	X			Handpump Well in the land	1	1	1	1	Public Tap	2.5						
X09	Sekong	Tatoung	Yip	X			Test Borehole	1	1	1	1	Public Tap	2.5						

Need	28
No need	30
SOW III	5
Total	67

Number: 52 | 53 | 50 | 50

Number	28	28	28	28	28	28
Average	54.21	15.50	19.18	94.71	89.64	85.79
Max	80	30	40	100	95	95
Min	45	5	12	70	75	63

Medical Equipment Procurement List for Health Center (Attapeau)

No.	Sita	Equipment	Sita												Total																																																																																				
			A-01	A-02	A-03	A-04	A-05	A-06	A-07	A-08	A-09	A-10	A-11	A-12		A-13	A-14	A-15	A-16	A-17	A-18	A-19	A-20	A-21	A-22	A-23	A-24	A-25	A-26	A-27	A-28	A-29	A-30	A-31	A-32	A-33	A-34	A-35	A-36	A-37	A-38	A-39	A-40	A-41	A-42	A-43	A-44	A-45	A-46	A-47	A-48	A-49	A-50	A-51	A-52	A-53	A-54	A-55	A-56	A-57	A-58	A-59	A-60	A-61	A-62	A-63	A-64	A-65	A-66	A-67	A-68	A-69	A-70	A-71	A-72	A-73	A-74	A-75	A-76	A-77	A-78	A-79	A-80	A-81	A-82	A-83	A-84	A-85	A-86	A-87	A-88	A-89	A-90	A-91	A-92	A-93	A-94	A-95	A-96
Type of Health Center																																																																																																			
SOW																																																																																																			
PV System																																																																																																			
Outpatient/Treatment Room																																																																																																			
HC-1	Instrument Trolley																																				20																																																														
HC-2	Weighting Scale for Infant																																				20																																																														
HC-3	Weighting Scale for Adult																																				20																																																														
HC-4	Sphygmomanometer																																				20																																																														
HC-5	Stethoscope																																				28																																																														
HC-6	Tongue Depressor																																				56																																																														
HC-7	Thermometer																																				20																																																														
HC-8	Examination Table																																				20																																																														
HC-9	Dirty Plate																																				20																																																														
HC-10	Treatment Instrument Set																																				40																																																														
HC-11	Instrument Cabinet																																				20																																																														
HC-12	Kidney Dish																																				20																																																														
HC-13	Bolting Sterilizer																																				19																																																														
HC-14	Examination Light																																				19																																																														
HC-15	Hand Light																																				20																																																														
HC-16	Desk																																				20																																																														
HC-17	Chair																																				20																																																														
HC-18	Lantern																																				20																																																														
HC-19	Round Chair																																				40																																																														
Examination Room for Obstetric																																																																																																			
HC-20	Thermometer																																				20																																																														
HC-21	Sphygmomanometer																																				20																																																														
HC-22	Stethoscope for Fetus																																				20																																																														
HC-23	Examination Table for Gynecology																																				20																																																														
HC-24	Desk																																				20																																																														
HC-25	Chair																																				2																																																														
HC-26	Vaccine Refrigerator (AC)																																				1																																																														
HC-27	Vaccine Refrigerator (DC)																																				2																																																														
HC-28	Vaccine Bag for Outreach																																				40																																																														
HC-29	Round Chair																																				40																																																														
Pharmacy/Accounting																																																																																																			
HC-30	Desk																																				20																																																														
HC-31	Chair																																				20																																																														
HC-32	Drug Cabinet																																				20																																																														
HC-33	Shelf for Documents																																				20																																																														
Delivery Room																																																																																																			
HC-34	Instrument Trolley																																				20																																																														
HC-35	Delivery bed																																				20																																																														
HC-36	Delivery Instrument Set for HC																																				40																																																														
HC-37	Autoclave																																				12																																																														
HC-38	Hot Air Sterilizer																																				1																																																														
HC-39	Delivery Light																																				19																																																														
HC-40	Delivery Instrument Set for Home																																				20																																																														
Ward																																																																																																			
HC-41	Bed																																				76																																																														
HC-42	IV stand																																				76																																																														
Laboratory																																																																																																			
HC-43	Microscope																																				3																																																														
HC-44	Shallow Tray																																				20																																																														
HC-45	Instrument Cabinet																																				20																																																														
HC-46	Drug Refrigerator																																				5																																																														
HC-47	Laboratory Instrument Set																																				5																																																														
HC-48	Rack for Slides																																				5																																																														
HC-49	Blood Cell Counter (manual type)																																				5																																																														
HC-50	Box for Slides																																				5																																																														
HC-51	Pipette																																				5																																																														
HC-52	Round Chair																																				5																																																														
Outreach																																																																																																			
HC-53	Motor Bika																																				14																																																														
HC-54	Stethoscope																																				20																																																														
HC-55	Thermometer																																				20																																																														
HC-56	Tongue Depressor																																				40																																																														
HC-57	Back Pack for Outreach																																				20																																																														
HC-58	Weighting Scale for Adult																																				20																																																														
HC-59	Sphygmomanometer																																				20																																																														

Handwritten initials/signature.

Handwritten signature.

Medical Equipment Procurement List for Health Center (Salavan)

No.	Equipment	Sita													Total					
		S-01 Wasey	S-02 Heng Ouhou	S-03 Kya Ngei	S-04 Hachonkhang (New)	S-05 Phakda	S-06 Phungyay	S-07 Day Nako	S-08 Phunging	S-09 Loak 90	S-10 Nakhon Koo	S-11 Khonay	S-12 Suphar	S-13 Tupplo		S-14 Thilanzay	S-15 Kenghuet	S-16 Nong Lee	S-17 Dyang Nhat (New)	S-18 Yang Pong (New)
Type of Health Center		A	A	A	A	A	A	A	A	A	A	A	A	A	A	A	A	A	A	A
SOW		I	I	I	I	I	I	I	I	I	I	I	I	I	I	I	I	I	I	I
PV System		I	I	I	I	I	I	I	I	I	I	I	I	I	I	I	I	I	I	I
Outpatient/Treatment Room																				
HC-1	Instrument Trolley	1	1	1	1	1	1	1	1	1	1	1	1	1	1	1	1	1	1	18
HC-2	Weighing Scale for Infant	1	1	1	1	1	1	1	1	1	1	1	1	1	1	1	1	1	1	18
HC-3	Weighing Scale for Adult	1	1	1	1	1	1	1	1	1	1	1	1	1	1	1	1	1	1	18
HC-4	Sphygmomanometer	1	1	1	1	1	1	1	1	1	1	1	1	1	1	1	1	1	1	36
HC-5	Sthethoscope	2	2	2	2	2	2	2	2	2	2	2	2	2	2	2	2	2	2	72
HC-6	Tongue Depressor	4	4	4	4	4	4	4	4	4	4	4	4	4	4	4	4	4	4	18
HC-7	Thermometer	1	1	1	1	1	1	1	1	1	1	1	1	1	1	1	1	1	1	18
HC-8	Examination Table	1	1	1	1	1	1	1	1	1	1	1	1	1	1	1	1	1	1	18
HC-9	Dirty Plate	1	1	1	1	1	1	1	1	1	1	1	1	1	1	1	1	1	1	18
HC-10	Treatment Instrument Set	2	2	2	2	2	2	2	2	2	2	2	2	2	2	2	2	2	2	36
HC-11	Instrument Cabinet	1	1	1	1	1	1	1	1	1	1	1	1	1	1	1	1	1	1	18
HC-12	Kidney Dish	1	1	1	1	1	1	1	1	1	1	1	1	1	1	1	1	1	1	18
HC-13	Boiling Sterilizer	1	1	1	1	1	1	1	1	1	1	1	1	1	1	1	1	1	1	18
HC-14	Examination Light	1	1	1	1	1	1	1	1	1	1	1	1	1	1	1	1	1	1	18
HC-15	Hand Light	1	1	1	1	1	1	1	1	1	1	1	1	1	1	1	1	1	1	18
HC-16	Desk	1	1	1	1	1	1	1	1	1	1	1	1	1	1	1	1	1	1	18
HC-17	Chair	1	1	1	1	1	1	1	1	1	1	1	1	1	1	1	1	1	1	18
HC-18	Lantern	1	1	1	1	1	1	1	1	1	1	1	1	1	1	1	1	1	1	18
HC-19	Round Chair	2	2	2	2	2	2	2	2	2	2	2	2	2	2	2	2	2	2	36
Examination Room for Obstetric																				
HC-20	Thermometer	1	1	1	1	1	1	1	1	1	1	1	1	1	1	1	1	1	1	18
HC-21	Sphygmomanometer	1	1	1	1	1	1	1	1	1	1	1	1	1	1	1	1	1	1	18
HC-22	Sthethoscope for Fetus	1	1	1	1	1	1	1	1	1	1	1	1	1	1	1	1	1	1	18
HC-23	Examination Table for Gynecology	1	1	1	1	1	1	1	1	1	1	1	1	1	1	1	1	1	1	18
HC-24	Desk	1	1	1	1	1	1	1	1	1	1	1	1	1	1	1	1	1	1	18
HC-25	Chair	1	1	1	1	1	1	1	1	1	1	1	1	1	1	1	1	1	1	18
HC-26	Vaccine Refrigerator (AC)	0	0	0	0	0	0	0	0	0	0	0	0	0	0	0	0	0	0	3
HC-28	Vaccine Bag for Outreach	0	0	0	0	0	0	0	0	0	0	0	0	0	0	0	0	0	0	4
HC-29	Round Chair	2	2	2	2	2	2	2	2	2	2	2	2	2	2	2	2	2	2	36
Pharmacy/Accounting																				
HC-30	Desk	1	1	1	1	1	1	1	1	1	1	1	1	1	1	1	1	1	1	18
HC-31	Chair	1	1	1	1	1	1	1	1	1	1	1	1	1	1	1	1	1	1	18
HC-32	Drug Cabinet	1	1	1	1	1	1	1	1	1	1	1	1	1	1	1	1	1	1	18
HC-33	Shelf for Documents	1	1	1	1	1	1	1	1	1	1	1	1	1	1	1	1	1	1	18
Delivery Room																				
HC-34	Instrument Trolley	1	1	1	1	1	1	1	1	1	1	1	1	1	1	1	1	1	1	18
HC-35	Delivery bed	1	1	1	1	1	1	1	1	1	1	1	1	1	1	1	1	1	1	18
HC-36	Delivery Instrument Set for HC	2	2	2	2	2	2	2	2	2	2	2	2	2	2	2	2	2	2	36
HC-37	Autoclave	1	1	1	1	1	1	1	1	1	1	1	1	0	0	0	0	0	0	15
HC-39	Delivery Light	1	1	1	1	1	1	1	1	1	1	1	1	1	1	1	1	1	1	18
HC-40	Delivery Instrument Set for Home	1	1	1	1	1	1	1	1	1	1	1	1	1	1	1	1	1	1	18
Ward																				
HC-41	Bed	5	5	5	5	5	5	5	5	5	5	5	5	5	5	5	5	5	5	90
HC-42	IV stand	5	5	5	5	5	5	5	5	5	5	5	5	5	5	5	5	5	5	90
Laboratory																				
HC-43	Microscope	0	0	0	0	0	0	0	0	0	0	0	0	0	0	0	0	0	0	1
HC-44	Shallow Tray	1	1	1	1	1	1	1	1	1	1	1	1	1	1	1	1	1	1	18
HC-45	Instrument Cabinet	1	1	1	1	1	1	1	1	1	1	1	1	1	1	1	1	1	1	18
HC-46	Drug Refrigerator	1	1	1	1	1	1	1	1	1	1	1	1	1	1	1	1	1	1	18
HC-47	Laboratory Instrument Set	0	1	0	0	0	0	1	0	0	0	1	0	0	0	0	1	0	0	4
HC-48	Rack for Slide	0	1	0	0	0	0	1	0	0	0	1	0	0	0	0	1	0	0	4
HC-49	Blood Cell Counter (manual type)	0	1	0	0	0	0	1	0	0	0	1	0	0	0	0	1	0	0	4
HC-50	Box for Slide	0	1	0	0	0	0	1	0	0	0	1	0	0	0	0	1	0	0	4
HC-51	Pipette	0	1	0	0	0	0	1	0	0	0	1	0	0	0	0	1	0	0	4
HC-52	Round Chair	0	1	0	0	0	0	1	0	0	0	1	0	0	0	0	1	0	0	7
Outreach																				
HC-53	Motor Bike	0	1	0	1	0	0	1	1	1	1	1	1	1	0	0	1	1	1	12
HC-54	Sthethoscope	1	1	1	1	1	1	1	1	1	1	1	1	1	1	1	1	1	1	18
HC-55	Thermometer	1	1	1	1	1	1	1	1	1	1	1	1	1	1	1	1	1	1	18
HC-56	Tongue Depressor	2	2	2	2	2	2	2	2	2	2	2	2	2	2	2	2	2	2	36
HC-57	Back Pack for Outreach	1	1	1	1	1	1	1	1	1	1	1	1	1	1	1	1	1	1	18
HC-58	Weighing Scale for Adult	1	1	1	1	1	1	1	1	1	1	1	1	1	1	1	1	1	1	18
HC-59	Sphygmomanometer	1	1	1	1	1	1	1	1	1	1	1	1	1	1	1	1	1	1	18

Medical Equipment Procurement List for Health Center (Sekong)

No.	Equipment	Site										Total		
		X-01 Dalaeth	X-02 Paka	X-03 Chaler	X-04 Pkay	X-05 Dya-chan	X-06 Pkon	X-07 Tamon (New)	X-08 Nongkham	X-09 Yop (New)				
Type of Health Center		-	-	-	-	A	A'	B	B					
SOW		I	I	I	I	II	I	I	II	I	I	7	II	2
PV System		●	●	●										
Outpatient/Treatment Room														
HC-1	Instrument Trolley	1	1	1	1	1	1	1	1	1	1	1	1	9
HC-2	Weighing Scale for Infant	1	1	1	1	1	1	1	1	1	1	1	1	9
HC-3	Weighing Scale for Adult	1	1	1	1	1	1	1	1	1	1	1	1	9
HC-4	Sphygmomanometer	1	1	1	1	1	1	1	1	1	1	1	1	9
HC-5	Stethoscope	1	1	1	2	2	2	1	2	1	2	1	2	13
HC-6	Tongue Depressor	2	2	2	4	4	4	2	4	2	4	2	4	26
HC-7	Thermometer	1	1	1	1	1	1	1	1	1	1	1	1	9
HC-8	Examination Table	1	1	1	1	1	1	1	1	1	1	1	1	9
HC-9	Dirty Plate	1	1	1	1	1	1	1	1	1	1	1	1	9
HC-10	Treatment Instrument Set	2	2	2	2	2	2	2	2	2	2	2	2	18
HC-11	Instrument Cabinet	1	1	1	1	1	1	1	1	1	1	1	1	9
HC-12	Kidney Dish	1	1	1	1	1	1	1	1	1	1	1	1	9
HC-13	Boiling Sterilizer	1	1	1	1	1	1	1	1	1	1	1	1	9
HC-14	Examination Light	1	1	1	1	1	1	1	1	1	1	1	1	9
HC-15	Hand Light	1	1	1	1	1	1	1	1	1	1	1	1	9
HC-16	Desk	1	1	1	1	1	1	1	1	1	1	1	1	9
HC-17	Chair	1	1	1	1	1	1	1	1	1	1	1	1	9
HC-18	Lantern	1	1	1	1	1	1	1	1	1	1	1	1	9
HC-19	Round Chair	2	2	2	2	2	2	2	2	2	2	2	2	18
Examination Room for Obstetric														
HC-20	Thermometer	1	1	1	1	1	1	1	1	1	1	1	1	9
HC-21	Sphygmomanometer	1	1	1	1	1	1	1	1	1	1	1	1	9
HC-22	Stethoscope for Fetus	1	1	1	1	1	1	1	1	1	1	1	1	9
HC-23	Examination Table for Gynecology	1	1	1	1	1	1	1	1	1	1	1	1	9
HC-24	Desk	1	1	1	1	1	1	1	1	1	1	1	1	9
HC-25	Chair	1	1	1	1	1	1	1	1	1	1	1	1	9
HC-26	Vaccine Refrigerator (AC)	0	0	0	0	0	0	0	0	0	0	0	0	2
HC-28	Vaccine Bag for Outreach	1	1	0	0	0	0	0	0	0	0	0	0	2
HC-29	Round Chair	2	2	2	2	2	2	2	2	2	2	2	2	18
Pharmacy/Accounting														
HC-30	Desk	1	1	1	1	1	1	1	1	1	1	1	1	9
HC-31	Chair	1	1	1	1	1	1	1	1	1	1	1	1	9
HC-32	Drug Cabinet	1	1	1	1	1	1	1	1	1	1	1	1	9
HC-33	Shelf for Documents	1	1	1	1	1	1	1	1	1	1	1	1	9
Delivery Room														
HC-34	Instrument Trolley	1	1	1	1	1	1	1	1	1	1	1	1	9
HC-35	Delivery bed	1	1	1	1	1	1	1	1	1	1	1	1	9
HC-36	Delivery Instrument Set for HC	2	2	2	2	2	2	2	2	2	2	2	2	18
HC-37	Autoclave	1	1	1	1	1	1	1	1	1	1	1	1	9
HC-39	Delivery Light	1	1	1	1	1	1	1	1	1	1	1	1	9
HC-40	Delivery Instrument Set for Home	1	1	1	1	1	1	1	1	1	1	1	1	9
Ward														
HC-41	Bed	3	3	3	5	5	5	3	5	3	5	3	5	35
HC-42	TV stand	3	3	3	5	5	5	3	5	3	5	3	5	35
Laboratory														
HC-43	Microscope	0	0	0	0	0	0	1	0	0	0	0	0	1
HC-44	Shallow Tray	1	1	1	1	1	1	1	1	1	1	1	1	9
HC-45	Instrument Cabinet	1	1	1	1	1	1	1	1	1	1	1	1	9
HC-46	Drug Refrigerator	1	1	1	1	1	1	1	1	1	1	1	1	9
HC-47	Laboratory Instrument Set	0	0	0	0	0	0	0	1	1	1	1	1	3
HC-48	Rack for Slide	0	0	0	0	0	0	0	1	1	1	1	1	3
HC-49	Blood Cell Counter (manual type)	0	0	0	0	0	0	0	1	1	1	1	1	3
HC-50	Box for Slide	0	0	0	0	0	0	0	1	1	1	1	1	3
HC-51	Pipette	0	0	0	0	0	0	0	1	1	1	1	1	3
HC-52	Round Chair	0	0	0	0	0	0	0	1	1	1	1	1	3
Outreach														
HC-53	Motor Bike	1	1	1	1	1	0	1	1	1	1	1	1	8
HC-54	Stethoscope	1	1	1	1	1	1	1	1	1	1	1	1	9
HC-55	Thermometer	1	1	1	1	1	1	1	1	1	1	1	1	9
HC-56	Tongue Depressor	2	2	2	2	2	2	2	2	2	2	2	2	18
HC-57	Back Pack for Outreach	1	1	1	1	1	1	1	1	1	1	1	1	9
HC-58	Weighing Scale for Adult	1	1	1	1	1	1	1	1	1	1	1	1	9
HC-59	Sphygmomanometer	1	1	1	1	1	1	1	1	1	1	1	1	9

Medical Equipment Procurement List for District Hospital

No.	Name of Equipment	Provincial									Total
		Name of District Hospital									
		D-01	D-02	D-03	D-04	D-05	D-06	D-07	D-08	D-09	
MCH											
DH-1	Examination Table	1	1	0	1	0	1	0	0	1	5
DH-2	Examination Table for Gynecology	1	1	1	1	1	1	1	1	1	9
DH-3	Stethoscope	0	0	0	2	0	0	0	0	1	3
DH-4	Sphygmomanometer	0	0	0	1	0	0	0	0	1	2
DH-5	Vaccine Bag for Outreach	0	0	0	0	0	0	0	0	1	1
DH-6	Thermometer	0	0	0	0	0	0	0	0	1	1
DH-7	Vaccine Refridgerator (AC)	0	0	0	0	0	0	1	0	0	1
Delivery Room											
DH-8	Delivery Table	1	0	0	1	1	0	0	1	1	5
DH-9	Delivery Instrument Set for Hospital	2	2	2	2	2	2	2	2	2	18
DH-10	Delivery Light	0	0	0	0	0	0	0	0	1	1
DH-11	IV stand	0	0	0	0	0	0	0	0	1	1
DH-12	Autoclave	1	0	0	0	0	1	0	0	1	3

(B)

Summary of Costs to be borne by the Lao Side

Particulars	Unit	Unit Price	Attapeau		Champasak		Salavan		Sekong		Amount	Remarks
			Qty	Amount	Qty	Amount	Qty	Amount	Qty	Amount		
Items to be covered by the Recipient												
- Site clearance including tree cutting and removal of roots	LS	-	1	55,495.14	1	67,680.50	1	78,439.56	1	59,746.51	261,361.71	
- Water connection with urban water supply network	sites	1,535.00	0	0.00	1	1,535.00	1	1,535.00	1	1,535.00	4,605.00	
- Water connection with community water supply network	sites	1,535.00	0	0.00	0	0.00	1	1,535.00	0	0.00	1,535.00	
- Power connection with low voltage power supply network	sites	1,500.00	6	9,000.00	8	12,000.00	15	22,500.00	6	9,000.00	52,500.00	
- Power connection with medium voltage power supply network	sites	128,362.80	1	128,362.80	2	256,725.60	2	256,725.60	0	0.00	641,814.00	Including 25KVA transformer
- Additional cost for extension of power supply lines (LV/MV)	LS	-	1	16,460.00	1	49,335.00	1	26,935.00	1	22,000.00	114,730.00	
- Provision of furniture for staff houses and health centers	LS	-	1	218,468.50	1	89,593.20	1	93,160.20	1	158,272.30	559,494.20	
Total				427,786.44		476,869.30		480,830.36		250,553.81	1,636,839.91	

Estimated Costs to be borne by Attapeu Provincial Health Office (PHO)

Unit: Thousand Kip

Particulars	Unit	Unit Price	SOW-I		SOW-II		Total		Remarks
			Qty	Amount	Qty	Amount	Qty	Amount	
Items to be covered by the Recipient									
- Site clearance including tree cutting and removal of roots	LS	-	1	35,739.04			1	55,495.14	See Table-A
- Water connection with urban water supply network	sites	1,535.00	0	0.00			0	0.00	
- Water connection with community water supply network	sites	1,535.00	0	0.00			0	0.00	
- Power connection with low voltage power supply network	sites	1,500.00	5	7,500.00			6	9,000.00	
- Power connection with medium voltage power supply network	sites	128,362.80	1	128,362.80			1	128,362.80	Including 25KVA transformer
- Additional cost for extension of power supply lines (LV/MV)	LS	-	1	12,240.00			1	16,460.00	See Table-B
- Provision of furniture for staff houses and health centers	LS	-	1	90,265.60			1	218,468.50	See Table-C
Total				274,107.44				427,786.44	

Table-A

SITE No.	Name	SOW	Remarks	Site condition/ Work required *	Evaluation	Area (m ²)	Unit rate	Amount
A-01	Bengboudkham / Lai-2	I	Same site	no need grading	Δ	964	8.69	8,379.09
A-02	Halang Nhai	I	New site	Potential to be flooded in the future	Δ	972	8.69	8,448.62
A-03	Dak Yiang	I	New site	no need grading	Δ	960	8.69	8,344.32
A-04	Samsou	I	Same site	no need grading	Δ	925	8.69	8,040.10
A-05	Ban Thac	I	New site	Potential to be flooded in the future/ pot-holes need to be filled up	o	996	0.66	653.38
A-07	Namsou	I	Same site	no need grading	Δ	925	8.69	8,040.10
A-10	Na Souk	I	New site	Land to be cleared	o	948	0.66	621.89
A-14	Beng Vilai	I	Same site	no need grading	o	924	0.66	606.14
A-15	Pak Bo	I	Same site	no need grading	o	984	0.66	645.50
SOW1						7,573		35,739.04

Table-B

SITE No.	Name	SOW	Line	Cost of Line Extension			Cost of Pole Installation			Total Amount		
				Unit	Qty	U/P	Amount	Unit	Qty		U/P	Amount
A-02	Halang Nhai	I	MV	lm	100	65.00	6,500.00	No.	2	2,870.00	5,740.00	12,240.00
SOW1		I										12,240.00

Table-C

	HC-A	1,660.50	HC-B	1,414.50	HC-B'	1,414.50	SH	21,090.40	Total Amount
SOW1	1	A-05	3	A-02, A-03, A-10	0		4	A-01, A-07, A-14, A-15	90,265.60

A5 テクニカルノート (T/N)

1) 現地調査Ⅱ (平成24年6月13日)

TECHNICAL NOTES


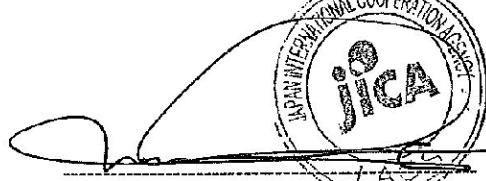
On the Project for Strengthening Health Service Network
In Southern Provinces in Lao People's Democratic Republic

Regarding Preparatory Survey on the Project for Strengthening Health Service Network in Southern Provinces (hereinafter referred to as "the Project"), the Minutes of Discussions (M/D) was signed on 5th of June, 2012 between Ministry of Health of Lao PDR (hereinafter referred to as "MOH") and JICA Preparatory Survey Team (hereinafter referred to as "the Team").

The consultant team of the Team (hereinafter referred to as "the Consultant") had a series of discussions with officials concerned and conducted its study and field surveys. Consequently, through discussions with MOH, both parties confirmed the following items described in the attached sheets:

1. Standard Plans for Health Center and Staff House for the Project
2. Provision of Microscope for the Project

Vientiane, June 13th, 2012



Mr. Mitsuo OCHI
Chief Consultant
Preparatory Survey Team
Japan International Cooperation Agency
JAPAN



Assoc. Prof. Dr. Chanphomma VONGSAMPHANH
Director General
Department of Health Care
Ministry of Health
LAO PEOPLE'S DEMOCRATIC REPUBLIC

ATTACHMENT

1. Standard Plans for Health Center and Staff House for the Project

The Consultant explained to MOH that considerations on the following points have been given in preparation of the standard plans for health center and staff house for the Project:

- (1) Toilet facilities are recommended to be separated from main building in order to avoid secondary infection of communicable diseases;
- (2) Pharmacy/Accounting Room, Outpatient Department (OPD)/Treatment Room, Pregnant Women's Consultation Room and Delivery Room shall be placed side by side with consideration of functional flow of staff as well as efficiency in providing healthcare services;
- (3) Delivery room shall be enlarged with consideration of workability and laying-out of the equipment to be provided by the Project;
- (4) Number of ward shall be two (2) with consideration of flexible use such as separating child and adult inpatients, male and female inpatients, and so on;
- (5) Expanded Program on Immunization (EPI) is recommended to be done in the Pregnant Women's Consultation Room; and,
- (6) Kitchen for staff house shall be reasonably away from the toilet with consideration of keeping better hygienic conditions.

And, as a result of mutual discussions held between MOH and the Consultant, both sides agreed on the plans for Type A Health Center, Type B Health Center and Staff House as shown in Annex-1 and Annex-2 shall be adopted as standard plans for the Project in principle. In addition, both sides agreed that location of toilet facilities for target health center without staff house and number of toilet and shower room shall be confirmed in November 2012.

2. Provision of Microscope for the Project

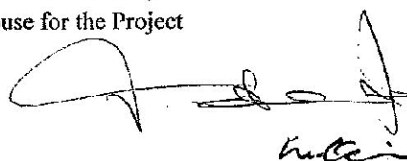
For the provision of microscope for the Project, the Lao side agreed to provide the following documents by not later than the end of July 2012:

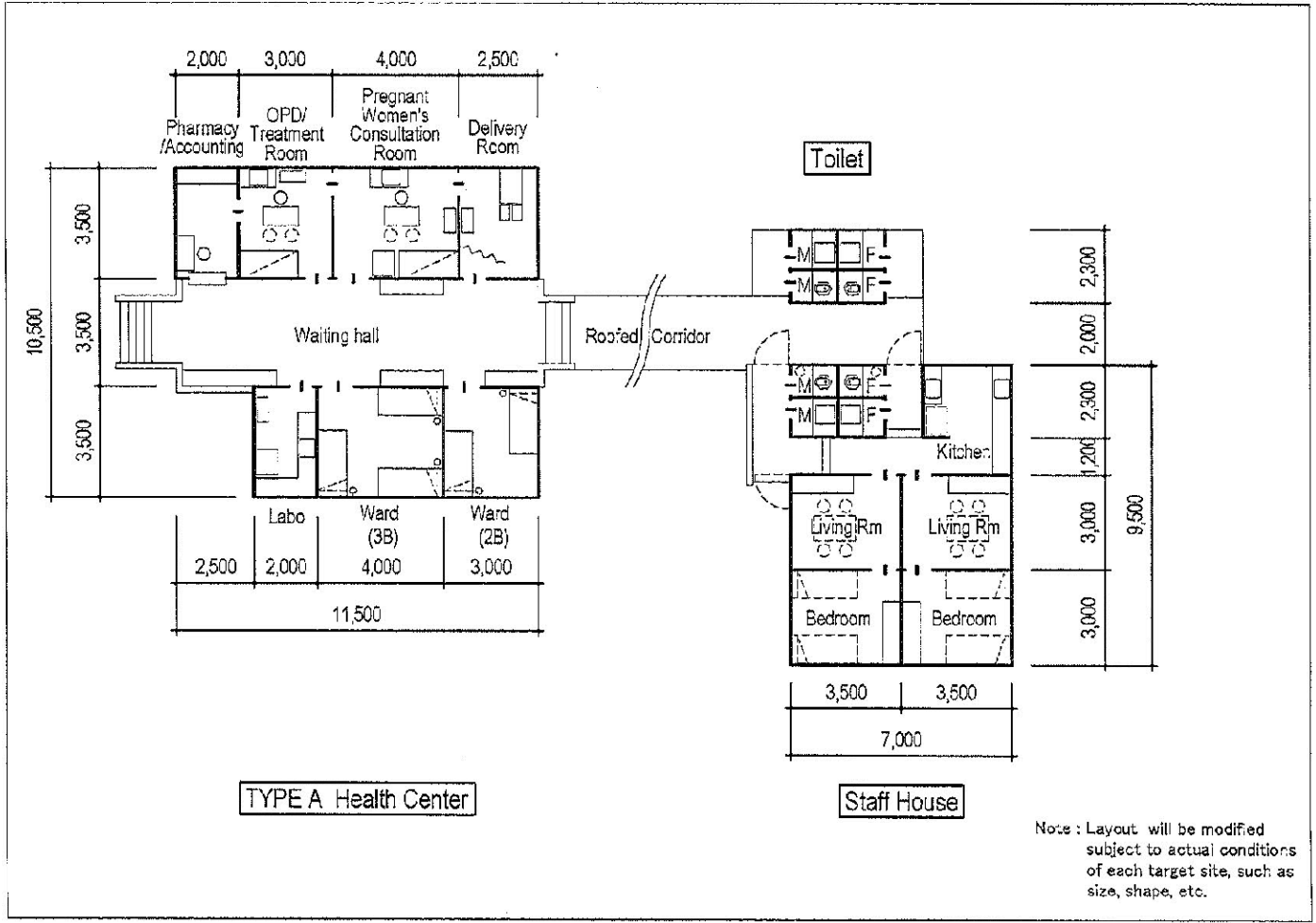
- (1) Lists of target health center(s) for each province i.e. Attapeau, Champasak, Salavan and Sekong, which requires provision of microscope; and,
- (2) List of Reasons (background, needs, etc) for each health center on why the selected target health center(s) requires the microscope.
- (3) Training plans for laboratory technician and/or health staff and their assignment schedule to the target health center(s) mentioned above.

And, both sides agreed that the selection of the target health center(s) to be provided with microscope shall be made by Japan side through survey and analysis (needs and impact based) from the lists of target health center(s) as well as giving consideration of the training plans and assignment schedule mentioned above. The final selection of target health center(s) will be confirmed in November 2012.

Annex-1 : Standard Plan for "Type A" Health Center with Staff House for the Project

Annex-2 : Standard Plan for "Type B" Health Center with Staff House for the Project



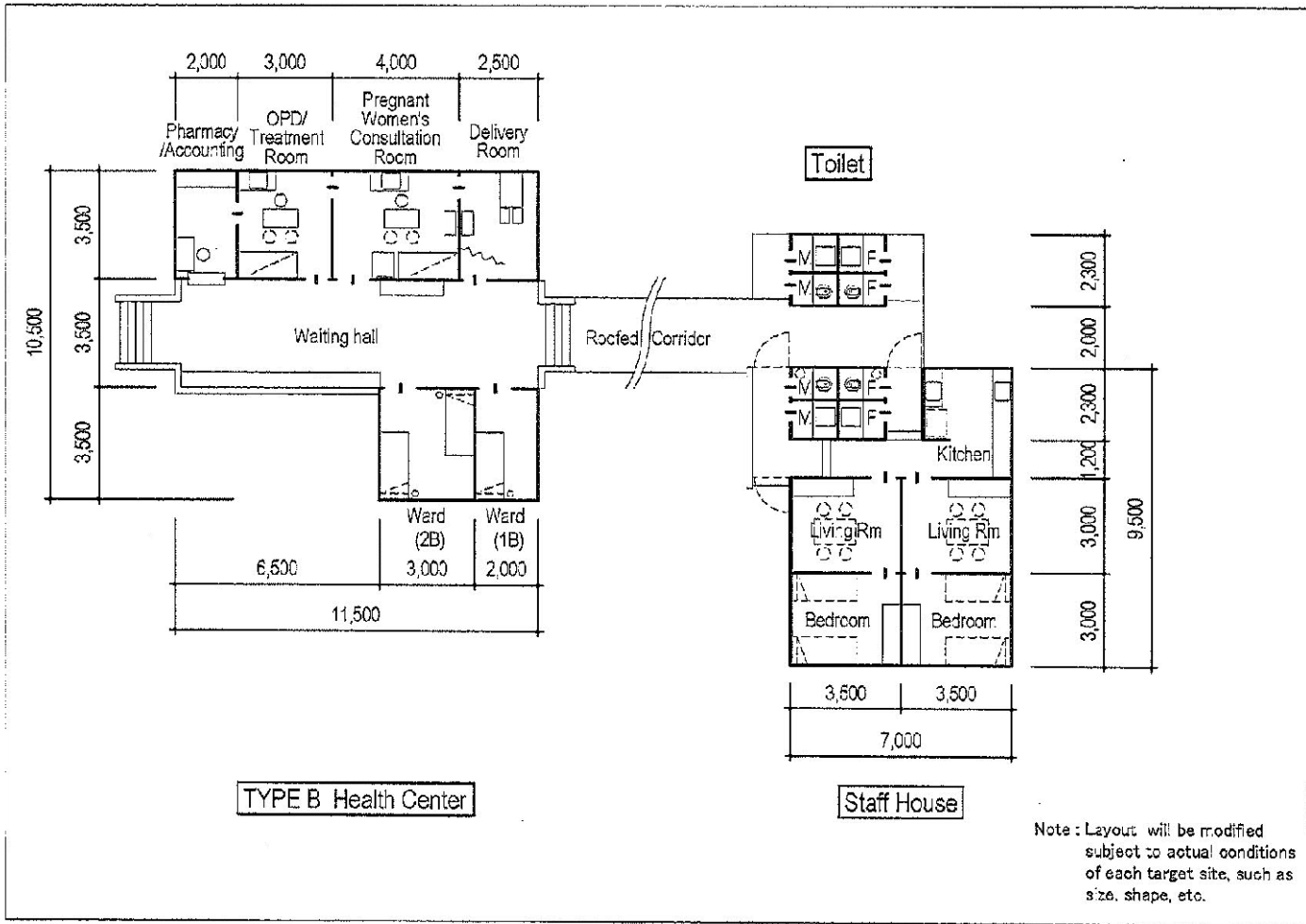


Standard Plan for "Type A" Health Center with Staff House for the Project

Annex-1

[Handwritten signature]

Standard Plan for "Type B" Health Center with Staff House for the Project



- 4 -

Handwritten signature and initials

A5-4

2) 入札参考資料説明 (平成 25 年 4 月 25 日)

TECHNICAL NOTES

On the Project for Strengthening Health Service Network
In Southern Provinces in Lao People's Democratic Republic

Regarding the Preparatory Survey on the Project for Strengthening Health Service Network in Southern Provinces (hereinafter referred to as "the Project"), JICA sent the 4th Survey Team for the explanation of the reference tender documents and discussion of the relevant issues for the Preparatory Survey (hereinafter referred to as "the Team"), which consisted of the consultant team of the Team (hereinafter referred to as "the Consultant") from April 21 to 26, 2013

The Consultant had a series of discussions with officials concerned and conducted its study and field surveys. And consequently, through discussions with MOH, both parties confirmed the following items described in the attached sheets:

1. Reference tender documents for the Project
2. Priority of the target sites and components for the Project
3. Measures to be taken by the Lao side

Vientiane, April 25th, 2013



Mr. Mitsuo OCHI
Chief Consultant
Preparatory Survey Team
Japan International Cooperation Agency
JAPAN

Assoc. Prof. Dr. Chanphomma VONGSAMPHANH
Director General
Department of Health Care
Ministry of Health
LAO PEOPLE'S DEMOCRATIC REPUBLIC

ATTACHMENT

1. Reference Tender Documents for the Project

Lao side confirmed and acknowledged the contents of the reference tender documents for each tender package which is summarized in ANNEX-1.

2. Priority of the Target Sites and Support Components for the Project

Although the priority of the target sites and support components for the Project was agreed by both sides (please refer to the Minutes of Discussions signed by both sides on June 5, 2012), both sides re-confirmed the priority of the target sites and components shown in ANNEX-2.

Furthermore, both sides also agreed that some of the target sites and components shown in ANNEX-2 may have to be excluded prior to and during implementation phase of the Project due to depreciation of Japanese Yen as well as any other budgetary deficit which may be caused by some factors such as price escalation in the Lao PDR etc.

3. Measures to be taken by the Lao Side

Although undertaking of the measures for the smooth implementation of the Project such as site clearance, power connection etc by the Lao side was agreed in the Minutes of Discussions signed by both sides on June 5, 2012, the Lao side re-confirmed the said undertakings by the Lao side and confirmed and acknowledged the following:

- (1) Site clearance should be completed for all required target sites prior to the finalization of the tender documents for each batch that is scheduled to be around the end of June 2013, the middle of January 2014 and the end of June 2014 for Batch-1, Batch-2 and Batch-3 respectively. (Please refer to ANNEX-3 for details)
- (2) Power connection should also be completed for all required sites for Batch-2 and Batch-3 before the middle of January 2014 and the end of June 2014 respectively. (Please refer to ANNEX-3 for details)
- (3) The said site clearance and power connection should be carried out at the target sites (areas) which correspond with the land certificate provided by the Lao side as well as land survey map prepared by the Team.
- (4) Any target sites failed to complete required site clearance and power connection before the deadline shall be excluded from the tender documents for each batch.

And, the Lao side further confirmed that the schedule for the necessary budget allocation for and implementation of the undertakings mentioned above should be informed to JICA Laos Office before the end of May 2013.

- ANNEX-1 : Summary of Reference Tender Documents for the Project
ANNEX-2 : Priority of Target Sites and Support Components for the Project
ANNEX-3 : Summary of Target Sites and Deadline for Site Clearance and Power Connection



m.o

Summary of Reference Tender Documents for the Project

No.	Work Item	Tender/ Contract No.	Tender Doc	Remarks
1	Well Construction (1 Volume)	01-01-01	Tender Documents ^{*1}	Including the Drawings for Location Map, Site Layout Plans and Typical Section of Well
2	Building Facilities Construction (3 Volume)	02-02-01	Vol. I: Tender Documents ^{*1}	
			Vol. II: Technical Specifications	
			Vol. III: Drawings	Including the Drawing for Photovoltaic System (PV)
3	Procurement of Equipment (2 Volumes)	03-02-01	Vol. I: Tender Documents ^{*2}	Bill of Quantities
			Vol. II: Technical Specifications	
4	Procurement of Plaque (1 Volume)	04-02-01	Tender Documents ^{*2}	Including the Drawing for Plaque and Key Plans

Note *1: Same format is used for Well Construction and Building Facilities Construction

Note *2: Same format is used for Procurement of Equipment and Procurement of Plaque



M.O

Priority of Target Sites and Components for the Project
(Classification by Components and Scope of Works: SOW)

SOW / Priority Rank	HC (67site)			DH (9site)		
	Facilities (51(+1)+32)		Equipment (67)	Fac.	Eq.	
	IIC (45(+1)+6)	SH (25+7)				
I	1	A-02 A-03 A-05 A-10 C-06 C-09 C-10 C-12 C-13 C-18 C-20 S-01 S-02 S-04 S-05 S-06 S-08 S-09 S-10 S-12 S-16 S-17 S-18 X-04 X-06 X-07 X-09 (27)	A-01 A-07 A-14 A-15 C-06 C-12 X-02 X-03 X-04 X-07 (10)	A-01 A-02 A-03 A-05 A-07 A-08 A-09 A-10 A-14 A-15 A-18 A-19 A-22 C-06 C-09 C-10 C-12 C-13 C-14 C-18 C-20 S-01 S-02 S-04 S-05 S-06 S-08 S-09 S-10 S-12 S-16 S-17 S-18 X-02 X-03 X-04 X-06 X-07 X-09 (39)		D-01 ~D-09 (1)
	2	C-04 C-05 (2)		A-06 A-12 A-13 A-17 A-20 C-04 C-05 X-01 (7)		
II	3	A-19* C-02 C-03 C-08 C-11 C-16 C-17 S-07 S-11 S-13 S-14 S-15 X-05 X-08 (14)	A-08 A-09 A-12 A-18 A-19 A-22 C-04 X-01 X-06 X-09 (10)	A-04 C-01 C-02 C-03 C-07 C-08 C-11 C-16 C-17 S-03 S-07 S-11 S-13 S-14 S-15 X-05 X-08 (18)		
	4	A-04 C-01 S-03 (3)	X-05 X-08 (2)	A-11 C-15 C-19 (3)		
	4'		S-04 S-17 S-18 (3)			
III	5	C-15 (1)	A-06 A-11 A-13 A-17 A-20 C-08 (6)			
	6	A-01 A-07 C-07 C-14 C-19 (5)	C-07 (1)		D-01 ~D-09 (1)	

Notes

- (1): Site No. shown in **black bold font** indicates re-construction of HC
- (2): Site No. shown in **red bold font** indicates new construction of HC.
- (3): Site No. shown in **blue bold font** indicates repairing of the existing HC has been requested.
- (4): Site No. shown in **blue bold italic font *** indicates repairing roof of the existing HC has been requested.
- (5): Site No. shown in **font with underline** has been drilled test borehole.
- (6): Site No. shown in **font with underline** indicates new construction of well in Batch-1.

m.o

Summary of Target Sites and Deadline for Site Clearance and Power Connection

(Classification of Target Sites for Site Clearance by Scope of Works: SOW)

Batch		Batch-1 (28 sites)	Batch-2 (14 sites)	Batch-3 (16 sites)
Deadline		End of June 2013	Middle of January 2014	End of June 2014
I	1	<u>A-02 A-05 A-10 A-15</u> <u>C-09 C-10 C-12 C-18 C-20</u> <u>S-05 S-09 S-16 S-17 S-18</u> (13)	<u>C-06 C-13</u> <u>S-01 S-02 S-04 S-06</u> (6)	<u>A-01 A-03 A-07 A-14</u> <u>S-08 S-10 S-12</u> <u>X-02 X-03 X-04 X-06 X-07 X-09</u> (13)
	2	<u>C-04 C-05</u> (2)	(0)	(0)
II	3	<u>A-08 A-09 A-12</u> <u>C-02 C-03 C-16</u> <u>S-07 S-11</u> <u>X-05</u> (9)	<u>A-18 A-19 A-22</u> <u>C-08 C-11 C-17</u> <u>S-14 S-15</u> (8)	<u>S-13</u> <u>X-01 X-08</u> (3)
	4	<u>A-04</u> <u>C-01</u> <u>S-03</u> (3)	(0)	(0)
	4'	(0)	(0)	(0)

(Classification of Target Sites for Power Connection by Scope of Works: SOW)

Batch		Batch-1 (None)	Batch-2 (11 sites)	Batch-3 (10 sites)
Deadline		End of June 2013	Middle of January 2014	End of June 2014
I	1	(0)	<u>A-02</u> <u>C-06 C-10</u> <u>S-02 S-04 S-16 S-18</u> (7)	<u>A-05</u> <u>C-09 C-20</u> <u>S-12</u> <u>X-04 X-07 X-09</u> (7)
	2	(0)	(0)	(0)
II	3	(0)	<u>C-08 C-17</u> (2)	<u>C-03</u> <u>S-07</u> <u>X-05</u> (3)
	4	(0)	<u>C-01</u> <u>S-03</u> (2)	(0)
	4'	(0)	(0)	(0)



m.o

A6 参考資料

No.	名称	形態	Original or Copy	言語	発行年度	発行機関
1	7 th National Health Sector Development Plan (2011-2015)	データ	Copy	英語	2011	保健省 Lao PDR
2	6 th National Health Sector Development Plan (2006-2010)	データ	Copy	英語	2006	保健省 Lao PDR
3	保健省組織図	データ	Copy	英語	2006	保健省 Lao PDR
4	National Strategies on Infection Control for Central and Provincial Hospital	図書	Original	ラオ語 英語	2008	保健省 Lao PDR
5	National Strategy of Maternal & Infant Mortality Reduction 2009-2015	データ	Copy	英語	2009	保健省 Lao PDR
6	Guidelines for the Scope of the Nursing Practice 2007	データ	Copy	英語	2007	保健省 Lao PDR
7	Nursing / Midwifery school Management and Implementation Guidelines	データ	Copy	英語	2008	保健省 Lao PDR
8	National Nutrition Policy	データ	Copy	英語	2008	保健省 Lao PDR
9	National Food Safety Policy	データ	Copy	英語	2009	保健省 Lao PDR
10	Law on Water and Water Resources	データ	Copy	英語	1996	保健省 Lao PDR
11	Law on Hygiene, Disease Prevention and Health Promotion	データ	Copy	英語	2001	保健省 Lao PDR
12	Law on Health Care	データ	Copy	英語	2005	保健省 Lao PDR
13	Law on Drugs and Medical Product	データ	Copy	英語	2000	保健省 Lao PDR
14	National Strategy for Malaria Control and Pre-Elimination 2011-2015	データ	Copy	英語	2010	保健省 Lao PDR
15	The National Strategy for the Rural Water Supply and Environmental Health	データ	Copy	英語	2004	保健省 Lao PDR
16	National Health Information System Strategic Plan (HISSP) 2009-2015	データ	Copy	英語	2009	保健省 Lao PDR
17	Human Resources of Health Strategic Plan 2009-2020	データ	Copy	英語	2008	保健省 Lao PDR
18	Policy on Primary Health Care	データ	Copy	英語	2000	保健省 Lao PDR
19	Review of Health Management Information System	データ	Copy	英語	2004	保健省 Lao PDR
20	Statistic Report FY 2009-2010	データ	Original		2010	保健省 Lao PDR
21	Multiple Indicator Cluster Survey	データ	Original		2006	保健省 Lao PDR
22	母子健康手帳	図書	Original	ラオ語		保健省 Lao PDR
23	List of Essential Medicines of Lao PDR	図書	Original	英語	2009	WHO
24	Financial and Administrative Systems in Lao PDR	データ	Copy	英語	2003	SIDA
25	Decree of the President	データ	Copy	英語	2003	大統領府 Lao PDR
26	Country Profile Lao PDR	データ	Copy	英語	2005	UN
27	GPAR SBSB Annual Progress Report	データ	Copy	英語	2011	UN
28	Public Expenditure Review Integrated Fiduciary Assessment	データ	Copy	英語	2007	WB, IMF, ADB and EC
29	Public Expenditure and Financial Accountability (PEFA)	データ	Copy	英語	2010	WB
30	気象データ (対象4県、アタプー、チャンパサック、サラワン、セコン)	データ	Copy	英語	2007-2011	気象水文局 Lao PDR
31	Socioeconomic Atlas LAO PDR an analysis based on 2005 Population and Housing Census	データ	Copy	ラオ語 英語	2005	計画投資省 Lao PDR
32	Multiple Indicator Cluster Survey	データ	Original		2006	計画投資省 Lao PDR
33	Survey on Monitoring the Paris Declaration LAO PDR Country Report	データ	Copy	英語	2008	計画投資省 Lao PDR
34	Year Book	データ	Copy	英語	2010	計画投資省 Lao PDR

No.	名称	形態	Original or Copy	言語	発行年度	発行機関
35	The Geography of Poverty and Inequality in the Lao PDR 2008	データ	Copy	英語		Swiss National Center of Competence in Research, International Food Policy Research Institute
36	Contract and BOQ of health center in Saravan (Lakornsy village、Lakompheng District) 契約、BOQ	データ	Copy	ラオ語		保健省 Lao PDR
37	Design Drawings of health center in Saravan (Lakornsy village、Lakompheng District) 設計図面	データ	Copy	英語		保健省 Lao PDR
38	セコン県 Nongnok 保健センター (WB 案件) 設計図書一式	資料	Copy	英語		保健省 Lao PDR
39	Technical Specification ADB Grant (Health Centers in Luangprabang Province) 特記仕様書	データ	Copy	英語		保健省 Lao PDR
40	ラオス建設業者、コンサルタント登録リスト	資料	Copy	英語		公共事業省 Lao PDR
41	Decree on Government Procurement of Goods, Works, Maintenance and Services No. 03/PM Dated 09 January 2004	図書	Original	英語		財務省 Procurement Monitoring Office Lao PDR
42	Standard Bidding Document Public Bidding	図書	Original	英語		財務省 Procurement Monitoring Office Lao PDR
43	Standard Bid Evaluation Form and Writing Bid Evaluation Report	図書	Original	英語		財務省 Procurement Monitoring Office Lao PDR
44	Procurement Manual	図書	Original	英語		財務省 Procurement Monitoring Office Lao PDR
45	Assessment of Solar Energy Potentials for Lao People's Democratic Republic	図書 CD	Original	英語		エネルギー省 Thailand、エネルギー局 Lao PDR
46	Current Status Electricity Map (対象4県、アタプー、チャンパサック、サラワン、セコン)	地図	Original	英語		エネルギー・鉱業省 Lao PDR
47	GIS 地図データ (対象4県、アタプー、チャンパサック、サラワン、セコン)	データ	Copy	英語		地理局
48	在ラオス日本大使館 プロジェクトリスト	データ	Copy	日本語		日本大使館
49	Sector Common Work Plan Monitoring Framework (SCWMF) プロGRESSレポート	データ、資料	Copy	英語	2012	JICA 技プロ CDSWC