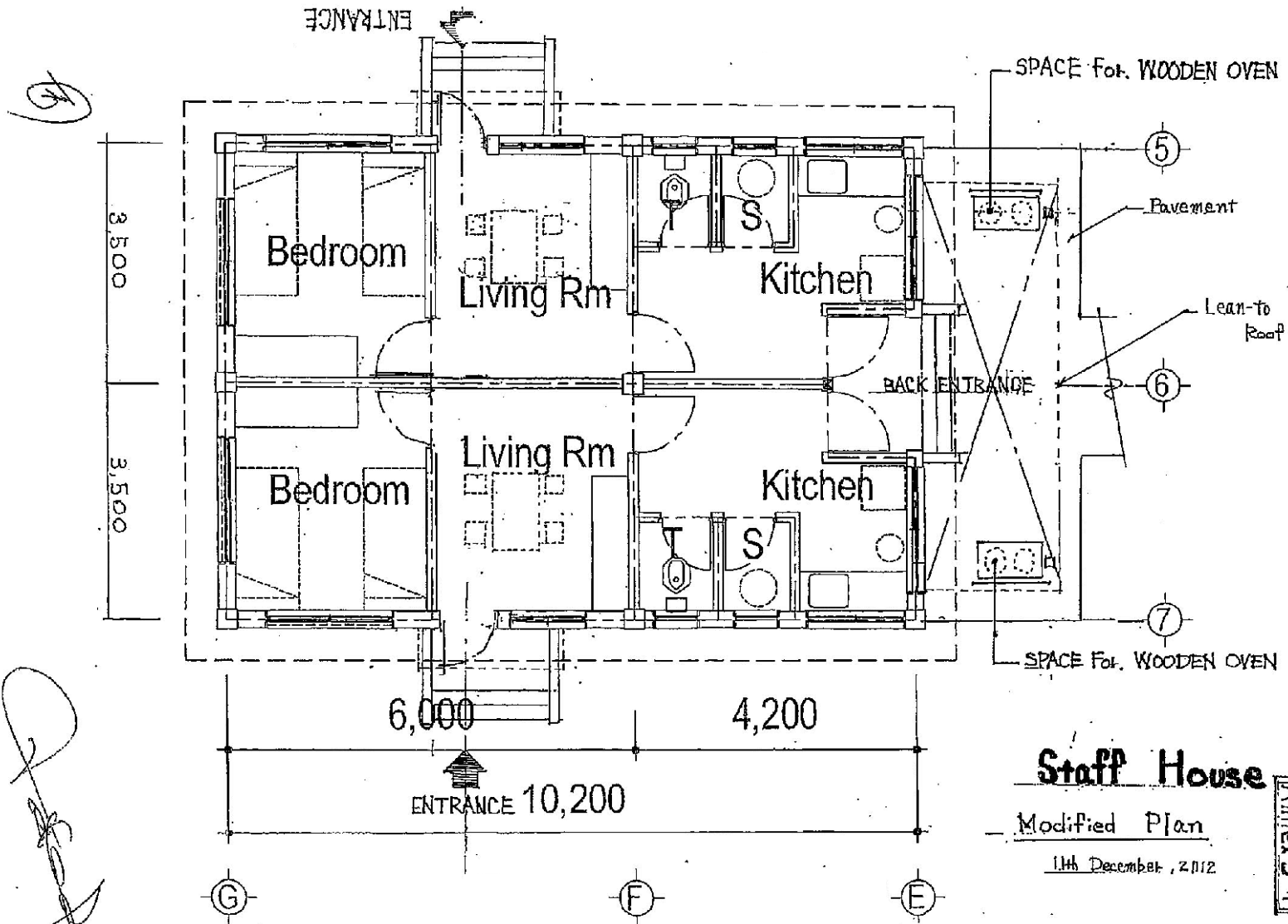


A441



Staff House

Modified Plan

11th December, 2012

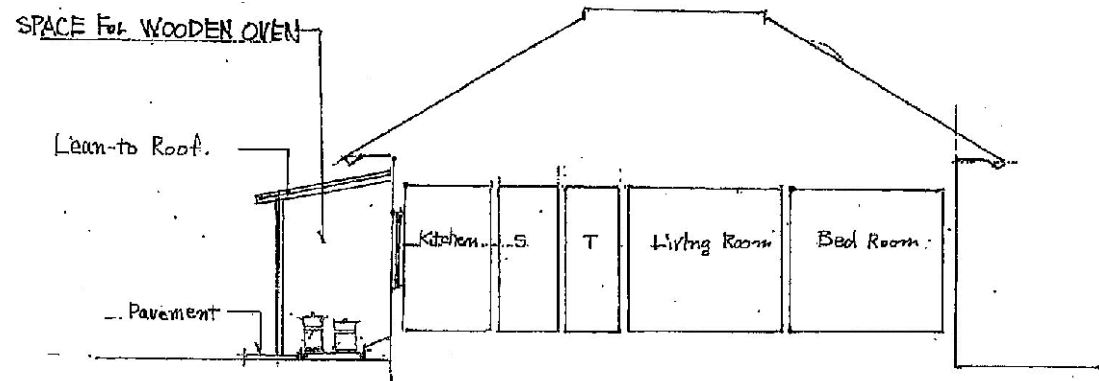
Amex 5-1

51

Staff House.

Modified Plan.

11th December, 2012



A4-42

[Handwritten signature]

Annex 5-2

Water Supply Plan

No	Province	District	EC Name	Drilling Quick-C, No. Month (X)	Spring Water	Public Water Supply System	Remarks	Water Supply Facility					Drilling Depth (m)	Static Water Level (m)	Dynamic Water Level (m)	Success Rate of Yield (%)	Success Rate of Water Quality (%)	Total Success Rate (%)	
								Tower	Tank	Pump	Protect	Other							Tank Volume (m3)
A01	Attapeu	Semexoy	Bengphonkha m / Lat-52	X			Existing System	1	1		1								
A02	Attapeu	Semexoy	Halong Nhal	O				1	1	1	1	1	60	8	12	100	90	90	
A03	Attapeu	Kayathla	Dak Yang	X			Test Borehole	1	1	1	1	Public Tap	2.5						
A04	Attapeu	Semexoy	Soupcal	O				1	1	1	1		55	15	20	100	95	95	
A05	Attapeu	Semexoy	Das Tille	O				1	1	1	1		60	10	15	100	90	90	
A07	Attapeu	Semexoy	Namson	X	O		Existing CFW	2 (Yield Low)	2	1		Pipe to SR (200m) + Rooster Tank	1						
A08	Attapeu	Kayathla	Sepuan	O				1	1	1	1		60	10	15	100	90	90	
A09	Attapeu	Kayathla	Kong Mikhna	O			Existing system has high Electrical Conductivity	1	1	1	1		1	60	10	15	100	70	70
A10	Attapeu	Phouvang	Ni-Souk	O				1	1	1	1		2.5	60	10	15	100	70	70
A12	Attapeu	Phouvang	Elouy Keo	O				1	1	1	1		2.5	50	20	30	70	90	
A14	Attapeu	Semexoy	Bong Vilai	X			Existing Handpump well	1	1	1	1	Solar Panel + Sealing	2.5						
A15	Attapeu	Semexoy	Fak Bo	O			Manganese has detected very high.	1	1	1	1	Solar Panel	2.5	60	10	15	100	70	70
A18	Attapeu	Semexoy	Longao	X			Existing System	1	1		1								
A19	Attapeu	Semexoy	Souannouy	X			Existing System	1	1		1								
A22	Attapeu	Phouvang	Ehou Khone	X			Existing System	1	1		1								
C01	Champasak	Falae	Bongsoong	O				1	1	1	1		1	45	10	15	100	90	90
C02	Champasak	Sansomboun	Syphai	O			Private company water supply from Mekong river water	1	1	1	1		1	50	10	15	100	95	95
C03	Champasak	Bachong	Kaithab	O				1	1	1	1		2.5	35	15	20	100	95	95
C04	Champasak	Phouhong	Vouacal	O			Existing well has very high Turbidity	1	1	1	1		1	50	10	15	100	90	90
C05	Champasak	Pathoumphone	Pathoumphone	O				1	1	1	1		1	55	15	20	100	95	95
C06	Champasak	Champasack	Houypana	X			Well drilling is required at implementation stage.	1	1	1	1	Closing	1						
C08	Champasak	Khong	Naphang	X			Piping from JICA well (300m)	1	1	1	1	Public Tap + Piping (300m)	2.5						
C09	Champasak	Sansomboun	Salou	O				1	1	1	1		1	50	10	15	100	95	95
C10	Champasak	Phouhong	Bampas	O				1	1	1	1		1	60	15	20	100	90	90
C11	Champasak	Phouhong	Koudhick	X			Existing well in village cluster office	1	1	1	1		1						
C12	Champasak	Pathoumphone	Kaala	O				1	1	1	1		1	55	15	20	100	95	95
C13	Champasak	Phouhong	Faananhong	X			Existing well in village cluster office	1	1	1	1		1						
C15	Champasak	Falae	Phouacal	O				1	1	1	1		1	50	10	15	100	85	85
C17	Champasak	Falae	Noussoung	X		O	Palae urban water supply												
C18	Champasak	Sansomboun	Sidabon	O				1	1	1	1		2.5	50	10	15	100	95	95
C20	Champasak	Pathoumphone	Nan-om	O				1	1	1	1		1	55	15	20	100	95	95
S01	Salavan	Salavan	Neray	X			Handpump Well behind EC	1	1	1	1	Sealing of Casing	1						
S02	Salavan	Salavan	Bong Oudoua	X		O	Existing Water Supply System of Community					Piping (500m)							
S03	Salavan	Salavan	Kase	O				1	1	1	1		1	50	10	15	100	95	95

Handwritten signature/initials.

Handwritten signature/initials.

Water Supply Plan

No	Province	District	HC News	Drilling (Need: O, No Need: X)	Spring Water	Public Water Supply System	Remarks	Water Supply Facility					Drilling Depth (m)	Static Water Level (m)	Dynamic Water Level (m)	Success Rate of Yield (%)	Success Rate of Water Quality (%)	Total Success Rate (%)	
								Tower	Tank	Pump	Protect	Others							Tank Volume (m ³)
S04	Salavan	Salavan	Naiachauand	X			Test Borehole	1	1	1	1	1							
S05	Salavan	Loangan	Phakkhala	O				1	1	1	1	1	60	10	15	100	90	90	
S05	Salavan	Loangan	Buanggyay	X			BICA well in front of HC	1	1	1	1	Public Tap	2.5						
S07	Salavan	Lakhoiphong	Dai Nalao	O				1	1	1	1	1	60	10	15	100	90	90	
S08	Salavan	Lakhoiphong	Phouang	X			Existing System	1	1	1	1	1							
S09	Salavan	Lakhoiphong	Lak 90	O				1	1	1	1	1	60	10	15	100	90	90	
S10	Salavan	Lakhoiphong	Nadon Kao	X			Existing well in village cluster office	1	1	1	1	1							
S11	Salavan	Vepi	Khonsay	O			Water is shortage. Water committee is not active	1	1	1	1	1	1	60	10	15	100	90	90
S12	Salavan	Vepi	Sephet	X		O	Existing Water Supply System of Community												
S13	Salavan	Khongsekon	Tanglo	X		O	Khongsekon Urban Water Supply												
S14	Salavan	Khongsekon	Thabuang	X			Existing System	1	1	1	1	1							
S15	Salavan	Khongsekon	Kenghad	X		O	Existing Water Supply System of Community												
S16	Salavan	Loangan	Noong Kae	O			QFW has Colliform	1	1	1	1	1	1	80	30	40	70	90	69
S17	Salavan	Loangan	Doong Nhai	O			Existing water supply system is using River Water	1	1	1	1	1	1	80	30	40	70	90	69
S18	Salavan	Loangan	Vang Peui	O			Private secure water supply	1	1	1	1	1	1	80	30	40	70	90	69
X01	Sekong	Daichung	Dakdin	X	O		Water supply system will be constructed from existing system	1	1	2	1	Protect of Spring + Reserve Tank + Solar Panel	2.5						
X02	Sekong	Daichung	Tava	X	O		QFW will be constructed by Poverty Reduction Fund	1	1	1	1	Solar Panel	1						
X03	Sekong	Kaloun	Chalna	X	O		Existing QFW	1	1	1	1	Protect of Spring + Reserve Tank + Solar Panel	1						
X04	Sekong	Kaloun	Phay	X	O		Management has decreased from Test Borehole. Existing QFW shall be used.	1	1	1	1	Piping from QFW Tank (300m) + Reserve Tank	1						
X05	Sekong	Lamam	Desechan	O				1	1	1	1	1	60	10	15	100	90	90	
X06	Sekong	Lamam	Phoa	X		O	Sekong Urban Water Supply												
X07	Sekong	Lamam	Tacum	X			Test Borehole	1	1	1	1	1							
X08	Sekong	Tatoung	Dama	X			Handpump Well in the land	1	1	1	1	Public Tap	2.5						
X09	Sekong	Tatoung	Yip	X			Test Borehole	1	1	1	1	Public Tap	2.5						

Need	28
No need	30
SOW III	9
Total	67

Number: 52, 53, 501, 501

Number	28	28	28	28	28	28
Average	54.21	13.50	19.18	94.71	89.64	85.79
Max	80	30	40	100	95	95
Min	45	8	12	70	75	63

Medical Equipment Procurement List for Health Center (Champasak)

No.	Equipment	Site																		Total			
		C01 Bala Sengk	C02 Sengk	C03 Km 21A	C04 Veangay (New)	C05 Pothumphe (New)	C06 Hwy Nong (New)	C07 Veangay (New)	C08 Nong	C09 Nong (New)	C10 Nong	C11 Kongsak	C12 Khe (New)	C13 Phumlong	C14 Champasak	C15 Phung	C16 Phumkil	C17 Nonnang	C18 Sakon (New)	C19 Kasek (New)	C20 Nonnang (New)	I	E
Type of Health Center		A	A	A	A	A	A	A	A	A	A	A	A	A	A	A	A	A	A	A	A		
SOW		II	II	II	I	I	I	II	II	I	I	I	I	I	II	II	II	II	II	II	II	I	I
PV System																							
Outpatient/Treatment Room																							
HC-1	Instrument Trolley	1	1	1	1	1	1	1	1	1	1	1	1	1	1	1	1	1	1	1	1	1	20
HC-2	Weighing Scale for Infant	1	1	1	1	1	1	1	1	1	1	1	1	1	1	1	1	1	1	1	1	1	20
HC-3	Weighing Scale for Adult	1	1	1	1	1	1	1	1	1	1	1	1	1	1	1	1	1	1	1	1	1	20
HC-4	Sphygmomanometer	1	1	1	1	1	1	1	1	1	1	1	1	1	1	1	1	1	1	1	1	1	20
HC-5	Stethoscopes	2	2	2	2	2	2	2	2	2	2	2	2	2	2	2	2	2	2	2	2	2	38
HC-6	Tongue Depressor	4	4	4	4	4	4	4	4	4	4	4	4	4	4	4	4	4	4	4	4	4	76
HC-7	Thermometer	1	1	1	1	1	1	1	1	1	1	1	1	1	1	1	1	1	1	1	1	1	20
HC-8	Examination Table	1	1	1	1	1	1	1	1	1	1	1	1	1	1	1	1	1	1	1	1	1	20
HC-9	Dirty Plate	1	1	1	1	1	1	1	1	1	1	1	1	1	1	1	1	1	1	1	1	1	20
HC-10	Treatment Instrument Set	2	2	2	2	2	2	2	2	2	2	2	2	2	2	2	2	2	2	2	2	2	40
HC-11	Instrument Cabinet	1	1	1	1	1	1	1	1	1	1	1	1	1	1	1	1	1	1	1	1	1	20
HC-12	Kidney Dish	1	1	1	1	1	1	1	1	1	1	1	1	1	1	1	1	1	1	1	1	1	20
HC-13	Boiling Sterilizer	1	1	1	1	1	1	1	1	1	1	1	1	1	1	1	1	1	1	1	1	1	19
HC-14	Examination Light	1	1	1	1	1	1	1	1	1	1	1	1	1	1	1	1	1	1	1	1	1	19
HC-15	Hand Light	1	1	1	1	1	1	1	1	1	1	1	1	1	1	1	1	1	1	1	1	1	20
HC-16	Desk	1	1	1	1	1	1	1	1	1	1	1	1	1	1	1	1	1	1	1	1	1	20
HC-17	Chair	1	1	1	1	1	1	1	1	1	1	1	1	1	1	1	1	1	1	1	1	1	20
HC-18	Lantern	1	1	1	1	1	1	1	1	1	1	1	1	1	1	1	1	1	1	1	1	1	20
HC-19	Round Chair	2	2	2	2	2	2	2	2	2	2	2	2	2	2	2	2	2	2	2	2	2	40
Examination Room for Obstetric																							
HC-20	Thermometer	1	1	1	1	1	1	1	1	1	1	1	1	1	1	1	1	1	1	1	1	1	20
HC-21	Sphygmomanometer	1	1	1	1	1	1	1	1	1	1	1	1	1	1	1	1	1	1	1	1	1	20
HC-22	Stethoscope for Fetus	1	1	1	1	1	1	1	1	1	1	1	1	1	1	1	1	1	1	1	1	1	20
HC-23	Examination Table for Gynecology	1	1	1	1	1	1	1	1	1	1	1	1	1	1	1	1	1	1	1	1	1	20
HC-24	Desk	1	1	1	1	1	1	1	1	1	1	1	1	1	1	1	1	1	1	1	1	1	20
HC-25	Chair	1	1	1	1	1	1	1	1	1	1	1	1	1	1	1	1	1	1	1	1	1	20
HC-26	Vaccine Refrigerator (AC)	0	0	0	1	1	0	0	1	0	0	1	0	0	0	0	0	0	0	1	0	1	7
HC-28	Vaccine Bag for Outreach	0	0	0	1	1	0	0	1	0	0	1	0	0	0	0	0	0	0	1	0	1	7
HC-29	Round Chair	2	2	2	2	2	2	2	2	2	2	2	2	2	2	2	2	2	2	2	2	2	40
Pharmacy/Accounting																							
HC-30	Desk	1	1	1	1	1	1	1	1	1	1	1	1	1	1	1	1	1	1	1	1	1	20
HC-31	Chair	1	1	1	1	1	1	1	1	1	1	1	1	1	1	1	1	1	1	1	1	1	20
HC-32	Drug Cabinet	1	1	1	1	1	1	1	1	1	1	1	1	1	1	1	1	1	1	1	1	1	20
HC-33	Shelf for Documents	1	1	1	1	1	1	1	1	1	1	1	1	1	1	1	1	1	1	1	1	1	20
Delivery Room																							
HC-34	Instrument Trolley	1	1	1	1	1	1	1	1	1	1	1	1	1	1	1	1	1	1	1	1	1	20
HC-35	Delivery bed	1	1	1	1	1	1	1	1	1	1	1	1	1	1	1	1	1	1	1	1	1	20
HC-36	Delivery instrument Set for HC	2	2	2	2	2	2	2	2	2	2	2	2	2	2	2	2	2	2	2	2	2	40
HC-37	Autoclave	1	1	1	1	1	1	1	1	1	1	1	1	1	1	1	1	1	1	1	1	1	19
HC-39	Delivery Light	1	1	1	1	1	1	1	1	1	1	1	1	1	1	1	1	1	1	1	1	1	19
HC-40	Delivery Instrument Set for Home	1	1	1	1	1	1	1	1	1	1	1	1	1	1	1	1	1	1	1	1	1	20
Ward																							
HC-41	Bed	5	5	5	5	5	5	3	5	3	5	5	5	5	5	5	5	5	5	5	5	5	96
HC-42	TV stand	5	5	5	5	5	5	3	5	3	5	5	5	5	5	5	5	5	5	5	5	5	96
Laboratory																							
HC-43	Microscope	0	0	0	1	0	1	1	0	0	0	0	0	0	0	0	0	0	0	0	0	0	3
HC-44	Shallow Tray	1	1	1	1	1	1	1	1	1	1	1	1	1	1	1	1	1	1	1	1	1	20
HC-45	Instrument Cabinet	1	1	1	1	1	1	1	1	1	1	1	1	1	1	1	1	1	1	1	1	1	20
HC-46	Drug Refrigerator	1	1	1	1	1	1	1	1	1	1	1	1	1	1	1	1	1	1	1	1	1	19
HC-47	Laboratory Instrument Set	0	0	0	1	0	1	1	1	0	0	0	0	0	0	0	0	0	0	0	0	0	6
HC-48	Rack for Slide	0	0	0	1	0	1	1	1	0	0	0	0	0	0	0	0	0	0	0	0	0	6
HC-49	Blood Cell Counter (manual type)	0	0	0	1	0	1	1	1	0	0	0	0	0	0	0	0	0	0	0	0	0	6
HC-50	Box for Slide	0	0	0	1	0	1	1	1	0	0	0	0	0	0	0	0	0	0	0	0	0	6
HC-51	Pipette	0	0	0	1	0	1	1	1	0	0	0	0	0	0	0	0	0	0	0	0	0	6
HC-52	Round Chair	0	0	0	1	1	1	1	1	0	0	1	0	0	0	0	0	0	0	0	0	0	10
Outreach																							
HC-53	Motor Bike	1	1	1	1	1	1	1	1	1	1	1	1	1	1	1	1	1	1	1	1	1	19
HC-54	Stethoscope	1	1	1	1	1	1	1	1	1	1	1	1	1	1	1	1	1	1	1	1	1	20
HC-55	Thermometer	1	1	1	1	1	1	1	1	1	1	1	1	1	1	1	1	1	1	1	1	1	20
HC-56	Tongue Depressor	2	2	2	2	2	2	2	2	2	2	2	2	2	2	2	2	2	2	2	2	2	40
HC-57	Back Pack for Outreach	1	1	1	1	1	1	1	1	1	1	1	1	1	1	1	1	1	1	1	1	1	20
HC-58	Weighing Scale for Adult	1	1	1	1	1	1	1	1	1	1	1	1	1	1	1	1	1	1	1	1	1	20
HC-59	Sphygmomanometer	1	1	1	1	1	1	1	1	1	1	1	1	1	1	1	1	1	1	1	1	1	20

Medical Equipment Procurement List for Health Center (Salavan)

No.	Equipment	Sita													Total								
		S-01 Wasey	S-02 Heng Oudou	S-03 Kya Ngei	S-04 Hacoindawng (New)	S-05 Phakka	S-06 Phungyay	S-07 Day Nako	S-08 Phungyay	S-09 Law 90	S-10 Naka Koo	S-11 Khoway	S-12 Saphit	S-13 Tappo		S-14 Thilawng	S-15 Kenghnet	S-16 Naga Lee	S-17 Dyang Nhat (New)	S-18 Yang Pait (New)			
Type of Health Center		A	A	A	A	A	A	A	A	A	A	A	A	A	A	A	A	A	A	A	Total		
SOW		I	I	II	I	I	I	II	I	I	II	I	II	II	I	I	I	I	I	I	I	II	6
PV System																							
Outpatient/Treatment Room																							
HC-1	Instrument Trolley	1	1	1	1	1	1	1	1	1	1	1	1	1	1	1	1	1	1	1	18		
HC-2	Weighing Scale for Infant	1	1	1	1	1	1	1	1	1	1	1	1	1	1	1	1	1	1	1	18		
HC-3	Weighing Scale for Adult	1	1	1	1	1	1	1	1	1	1	1	1	1	1	1	1	1	1	1	18		
HC-4	Sphygmomanometer	1	1	1	1	1	1	1	1	1	1	1	1	1	1	1	1	1	1	1	36		
HC-5	Stethoscope	2	2	2	2	2	2	2	2	2	2	2	2	2	2	2	2	2	2	2	72		
HC-6	Tongue Depressor	4	4	4	4	4	4	4	4	4	4	4	4	4	4	4	4	4	4	4	18		
HC-7	Thermometer	1	1	1	1	1	1	1	1	1	1	1	1	1	1	1	1	1	1	1	18		
HC-8	Examination Table	1	1	1	1	1	1	1	1	1	1	1	1	1	1	1	1	1	1	1	18		
HC-9	Dirty Plate	1	1	1	1	1	1	1	1	1	1	1	1	1	1	1	1	1	1	1	18		
HC-10	Treatment Instrument Set	2	2	2	2	2	2	2	2	2	2	2	2	2	2	2	2	2	2	2	36		
HC-11	Instrument Cabinet	1	1	1	1	1	1	1	1	1	1	1	1	1	1	1	1	1	1	1	18		
HC-12	Kidney Dish	1	1	1	1	1	1	1	1	1	1	1	1	1	1	1	1	1	1	1	18		
HC-13	Boiling Sterilizer	1	1	1	1	1	1	1	1	1	1	1	1	1	1	1	1	1	1	1	18		
HC-14	Examination Light	1	1	1	1	1	1	1	1	1	1	1	1	1	1	1	1	1	1	1	18		
HC-15	Hand Light	1	1	1	1	1	1	1	1	1	1	1	1	1	1	1	1	1	1	1	18		
HC-16	Desk	1	1	1	1	1	1	1	1	1	1	1	1	1	1	1	1	1	1	1	18		
HC-17	Chair	1	1	1	1	1	1	1	1	1	1	1	1	1	1	1	1	1	1	1	18		
HC-18	Lantern	1	1	1	1	1	1	1	1	1	1	1	1	1	1	1	1	1	1	1	18		
HC-19	Round Chair	2	2	2	2	2	2	2	2	2	2	2	2	2	2	2	2	2	2	2	36		
Examination Room for Obstetric																							
HC-20	Thermometer	1	1	1	1	1	1	1	1	1	1	1	1	1	1	1	1	1	1	1	18		
HC-21	Sphygmomanometer	1	1	1	1	1	1	1	1	1	1	1	1	1	1	1	1	1	1	1	18		
HC-22	Stethoscope for Fetus	1	1	1	1	1	1	1	1	1	1	1	1	1	1	1	1	1	1	1	18		
HC-23	Examination Table for Gynecology	1	1	1	1	1	1	1	1	1	1	1	1	1	1	1	1	1	1	1	18		
HC-24	Desk	1	1	1	1	1	1	1	1	1	1	1	1	1	1	1	1	1	1	1	18		
HC-25	Chair	1	1	1	1	1	1	1	1	1	1	1	1	1	1	1	1	1	1	1	18		
HC-26	Vaccine Refrigerator (AC)	0	0	0	1	0	0	0	0	0	0	0	0	0	0	0	0	0	0	0	3		
HC-28	Vaccine Bag for Outreach	0	0	0	1	0	0	0	0	0	0	0	0	0	0	0	0	0	0	0	4		
HC-29	Round Chair	2	2	2	2	2	2	2	2	2	2	2	2	2	2	2	2	2	2	2	36		
Pharmacy/Accounting																							
HC-30	Desk	1	1	1	1	1	1	1	1	1	1	1	1	1	1	1	1	1	1	1	18		
HC-31	Chair	1	1	1	1	1	1	1	1	1	1	1	1	1	1	1	1	1	1	1	18		
HC-32	Drug Cabinet	1	1	1	1	1	1	1	1	1	1	1	1	1	1	1	1	1	1	1	18		
HC-33	Shelf for Documents	1	1	1	1	1	1	1	1	1	1	1	1	1	1	1	1	1	1	1	18		
Delivery Room																							
HC-34	Instrument Trolley	1	1	1	1	1	1	1	1	1	1	1	1	1	1	1	1	1	1	1	18		
HC-35	Delivery bed	1	1	1	1	1	1	1	1	1	1	1	1	1	1	1	1	1	1	1	18		
HC-36	Delivery Instrument Set for HC	2	2	2	2	2	2	2	2	2	2	2	2	2	2	2	2	2	2	2	36		
HC-37	Autoclave	1	1	1	1	1	1	1	1	1	1	1	1	0	0	0	0	0	0	0	15		
HC-39	Delivery Light	1	1	1	1	1	1	1	1	1	1	1	1	1	1	1	1	1	1	1	18		
HC-40	Delivery Instrument Set for Home	1	1	1	1	1	1	1	1	1	1	1	1	1	1	1	1	1	1	1	18		
Ward																							
HC-41	Bed	5	5	5	5	5	5	5	5	5	5	5	5	5	5	5	5	5	5	5	90		
HC-42	IV stand	5	5	5	5	5	5	5	5	5	5	5	5	5	5	5	5	5	5	5	90		
Laboratory																							
HC-43	Microscope	0	0	0	0	0	0	0	0	0	0	0	0	0	0	0	0	0	0	0	1		
HC-44	Shallow Tray	1	1	1	1	1	1	1	1	1	1	1	1	1	1	1	1	1	1	1	18		
HC-45	Instrument Cabinet	1	1	1	1	1	1	1	1	1	1	1	1	1	1	1	1	1	1	1	18		
HC-46	Drug Refrigerator	1	1	1	1	1	1	1	1	1	1	1	1	1	1	1	1	1	1	1	18		
HC-47	Laboratory Instrument Set	0	1	0	0	0	1	0	0	0	1	0	0	0	0	0	0	0	0	0	4		
HC-48	Back for Slide	0	1	0	0	0	0	1	0	0	0	1	0	0	0	0	0	0	0	0	4		
HC-49	Blood Cell Counter (manual type)	0	1	0	0	0	0	1	0	0	0	1	0	0	0	0	0	0	0	0	4		
HC-50	Box for Slide	0	1	0	0	0	0	1	0	0	0	1	0	0	0	0	0	0	0	0	4		
HC-51	Pipette	0	1	0	0	0	0	1	0	0	0	1	0	0	0	0	0	0	0	0	4		
HC-52	Round Chair	0	1	0	1	0	0	1	0	0	0	1	0	0	0	0	0	0	0	0	7		
Outreach																							
HC-53	Motor Bike	0	1	0	1	0	0	1	1	1	1	1	1	1	0	0	1	1	1	1	12		
HC-54	Stethoscope	1	1	1	1	1	1	1	1	1	1	1	1	1	1	1	1	1	1	1	18		
HC-55	Thermometer	1	1	1	1	1	1	1	1	1	1	1	1	1	1	1	1	1	1	1	18		
HC-56	Tongue Depressor	2	2	2	2	2	2	2	2	2	2	2	2	2	2	2	2	2	2	2	36		
HC-57	Back Pack for Outreach	1	1	1	1	1	1	1	1	1	1	1	1	1	1	1	1	1	1	1	18		
HC-58	Weighing Scale for Adult	1	1	1	1	1	1	1	1	1	1	1	1	1	1	1	1	1	1	1	18		
HC-59	Sphygmomanometer	1	1	1	1	1	1	1	1	1	1	1	1	1	1	1	1	1	1	1	18		

Medical Equipment Procurement List for Health Center (Sekong)

No.	Equipment	Site										Total		
		X-01 Dalaeth	X-02 Paka	X-03 Chaler	X-04 Pkay	X-05 Dya-chan	X-06 Pkon	X-07 Tamon (New)	X-08 Nongkham	X-09 Yop (New)				
Type of Health Center		-	-	-	-	A	A'	B	A	B				
SOW		I	I	I	I	II	I	I	II	I	I	7	II	2
PV System		●	●	●										
Outpatient/Treatment Room														
HC-1	Instrument Trolley	1	1	1	1	1	1	1	1	1	1	1	1	9
HC-2	Weighing Scale for Infant	1	1	1	1	1	1	1	1	1	1	1	1	9
HC-3	Weighing Scale for Adult	1	1	1	1	1	1	1	1	1	1	1	1	9
HC-4	Sphygmomanometer	1	1	1	1	1	1	1	1	1	1	1	1	9
HC-5	Sthethoscope	1	1	1	2	2	2	1	2	1	2	1	2	13
HC-6	Tongue Depressor	2	2	2	4	4	4	2	4	2	4	2	4	26
HC-7	Thermometer	1	1	1	1	1	1	1	1	1	1	1	1	9
HC-8	Examination Table	1	1	1	1	1	1	1	1	1	1	1	1	9
HC-9	Dirty Plate	1	1	1	1	1	1	1	1	1	1	1	1	9
HC-10	Treatment Instrument Set	2	2	2	2	2	2	2	2	2	2	2	2	18
HC-11	Instrument Cabinet	1	1	1	1	1	1	1	1	1	1	1	1	9
HC-12	Kidney Dish	1	1	1	1	1	1	1	1	1	1	1	1	9
HC-13	Boiling Sterilizer	1	1	1	1	1	1	1	1	1	1	1	1	9
HC-14	Examination Light	1	1	1	1	1	1	1	1	1	1	1	1	9
HC-15	Hand Light	1	1	1	1	1	1	1	1	1	1	1	1	9
HC-16	Desk	1	1	1	1	1	1	1	1	1	1	1	1	9
HC-17	Chair	1	1	1	1	1	1	1	1	1	1	1	1	9
HC-18	Lantern	1	1	1	1	1	1	1	1	1	1	1	1	9
HC-29	Round Chair	2	2	2	2	2	2	2	2	2	2	2	2	18
Examination Room for Obstetric														
HC-20	Thermometer	1	1	1	1	1	1	1	1	1	1	1	1	9
HC-21	Sphygmomanometer	1	1	1	1	1	1	1	1	1	1	1	1	9
HC-22	Sthethoscope for Fetus	1	1	1	1	1	1	1	1	1	1	1	1	9
HC-23	Examination Table for Gynecology	1	1	1	1	1	1	1	1	1	1	1	1	9
HC-24	Desk	1	1	1	1	1	1	1	1	1	1	1	1	9
HC-25	Chair	1	1	1	1	1	1	1	1	1	1	1	1	9
HC-26	Vaccine Refrigerator (AC)	0	0	0	0	0	0	0	0	0	0	0	0	2
HC-28	Vaccine Bag for Outreach	1	1	0	0	0	0	0	0	0	0	0	0	2
HC-29	Round Chair	2	2	2	2	2	2	2	2	2	2	2	2	18
Pharmacy/Accounting														
HC-30	Desk	1	1	1	1	1	1	1	1	1	1	1	1	9
HC-31	Chair	1	1	1	1	1	1	1	1	1	1	1	1	9
HC-32	Drug Cabinet	1	1	1	1	1	1	1	1	1	1	1	1	9
HC-33	Shelf for Documents	1	1	1	1	1	1	1	1	1	1	1	1	9
Delivery Room														
HC-34	Instrument Trolley	1	1	1	1	1	1	1	1	1	1	1	1	9
HC-35	Delivery bed	1	1	1	1	1	1	1	1	1	1	1	1	9
HC-36	Delivery Instrument Set for HC	2	2	2	2	2	2	2	2	2	2	2	2	18
HC-37	Autoclave	1	1	1	1	1	1	1	1	1	1	1	1	9
HC-39	Delivery Light	1	1	1	1	1	1	1	1	1	1	1	1	9
HC-40	Delivery Instrument Set for Home	1	1	1	1	1	1	1	1	1	1	1	1	9
Ward														
HC-41	Bed	3	3	3	5	5	5	3	5	3	5	3	5	35
HC-42	TV stand	3	3	3	5	5	5	3	5	3	5	3	5	35
Laboratory														
HC-43	Microscope	0	0	0	0	0	0	1	0	0	0	0	0	1
HC-44	Shallow Tray	1	1	1	1	1	1	1	1	1	1	1	1	9
HC-45	Instrument Cabinet	1	1	1	1	1	1	1	1	1	1	1	1	9
HC-46	Drug Refrigerator	1	1	1	1	1	1	1	1	1	1	1	1	9
HC-47	Laboratory Instrument Set	0	0	0	0	0	0	1	1	1	1	1	1	3
HC-48	Rack for Slide	0	0	0	0	0	0	1	1	1	1	1	1	3
HC-49	Blood Cell Counter (manual type)	0	0	0	0	0	0	1	1	1	1	1	1	3
HC-50	Box for Slide	0	0	0	0	0	0	1	1	1	1	1	1	3
HC-51	Pipette	0	0	0	0	0	0	1	1	1	1	1	1	3
HC-52	Round Chair	0	0	0	0	0	0	1	1	1	1	1	1	3
Outreach														
HC-53	Motor Bike	1	1	1	1	1	0	1	1	1	1	1	1	8
HC-54	Sthethoscope	1	1	1	1	1	1	1	1	1	1	1	1	9
HC-55	Thermometer	1	1	1	1	1	1	1	1	1	1	1	1	9
HC-56	Tongue Depressor	2	2	2	2	2	2	2	2	2	2	2	2	18
HC-57	Back Pack for Outreach	1	1	1	1	1	1	1	1	1	1	1	1	9
HC-58	Weighing Scale for Adult	1	1	1	1	1	1	1	1	1	1	1	1	9
HC-59	Sphygmomanometer	1	1	1	1	1	1	1	1	1	1	1	1	9

Medical Equipment Procurement List for District Hospital

No.	Name of Equipment	Provincial										Total
		Name of District Hospital										
		D-01	D-02	D-03	D-04	D-05	D-06	D-07	D-08	D-09		
MCH												
DH-1	Examination Table	1	1	0	1	0	1	0	0	1	5	
DH-2	Examination Table for Gynecology	1	1	1	1	1	1	1	1	1	9	
DH-3	Stethoscope	0	0	0	2	0	0	0	0	1	3	
DH-4	Sphygmomanometer	0	0	0	1	0	0	0	0	1	2	
DH-5	Vaccine Bag for Outreach	0	0	0	0	0	0	0	0	1	1	
DH-6	Thermometer	0	0	0	0	0	0	0	0	1	1	
DH-7	Vaccine Refridgerator (AC)	0	0	0	0	0	0	1	0	0	1	
Delivery Room												
DH-8	Delivery Table	1	0	0	1	1	0	0	1	1	5	
DH-9	Delivery Instrument Set for Hospital	2	2	2	2	2	2	2	2	2	18	
DH-10	Delivery Light	0	0	0	0	0	0	0	0	1	1	
DH-11	IV stand	0	0	0	0	0	0	0	0	1	1	
DH-12	Autoclave	1	0	0	0	0	1	0	0	1	3	

(B)

Summary of Costs to be borne by the Lao Side

Particulars	Unit	Unit Price	Attapeau		Champasak		Salavan		Sekong		Amount	Remarks
			Qty	Amount	Qty	Amount	Qty	Amount	Qty	Amount		
Items to be covered by the Recipient												
- Site clearance including tree cutting and removal of roots	LS	-	1	55,495.14	1	67,680.50	1	78,439.56	1	59,746.51	261,361.71	
- Water connection with urban water supply network	sites	1,535.00	0	0.00	1	1,535.00	1	1,535.00	1	1,535.00	4,605.00	
- Water connection with community water supply network	sites	1,535.00	0	0.00	0	0.00	1	1,535.00	0	0.00	1,535.00	
- Power connection with low voltage power supply network	sites	1,500.00	6	9,000.00	8	12,000.00	15	22,500.00	6	9,000.00	52,500.00	
- Power connection with medium voltage power supply network	sites	128,362.80	1	128,362.80	2	256,725.60	2	256,725.60	0	0.00	641,814.00	Including 25KVA transformer
- Additional cost for extension of power supply lines (LV/MV)	LS	-	1	16,460.00	1	49,335.00	1	26,935.00	1	22,000.00	114,730.00	
- Provision of furniture for staff houses and health centers	LS	-	1	218,468.50	1	89,593.20	1	93,160.20	1	158,272.30	559,494.20	
Total				427,786.44		476,869.30		480,830.36		250,553.81	1,636,839.91	

Estimated Costs to be borne by Attapeu Provincial Health Office (PHO)

Unit: Thousand Kip

Particulars	Unit	Unit Price	SOW-I		SOW-II		Total		Remarks
			Qty	Amount	Qty	Amount	Qty	Amount	
Items to be covered by the Recipient									
- Site clearance including tree cutting and removal of roots	LS	-	1	35,739.04			1	55,495.14	See Table-A
- Water connection with urban water supply network	sites	1,535.00	0	0.00			0	0.00	
- Water connection with community water supply network	sites	1,535.00	0	0.00			0	0.00	
- Power connection with low voltage power supply network	sites	1,500.00	5	7,500.00			6	9,000.00	
- Power connection with medium voltage power supply network	sites	128,362.80	1	128,362.80			1	128,362.80	Including 25KVA transformer
- Additional cost for extension of power supply lines (LV/MV)	LS	-	1	12,240.00			1	16,460.00	See Table-B
- Provision of furniture for staff houses and health centers	LS	-	1	90,265.60			1	218,468.50	See Table-C
Total				274,107.44				427,786.44	

Table-A

SITE No.	Name	SOW	Remarks	Site condition/ Work required *	Evaluation	Area (m ²)	Unit rate	Amount
A-01	Bengboudkham / Lai-2	I	Same site	no need grading	Δ	964	8.69	8,379.09
A-02	Halang Nhai	I	New site	Potential to be flooded in the future	Δ	972	8.69	8,448.62
A-03	Dak Yiang	I	New site	no need grading	Δ	960	8.69	8,344.32
A-04	Somoung	I	Same site	no need grading	Δ	960	8.69	8,344.32
A-05	Ban Thac	I	New site	Potential to be flooded in the future/ pot-holes need to be filled up	o	996	0.66	653.38
A-07	Namsou	I	Same site	no need grading	Δ	925	8.69	8,040.10
A-08	Somoung	I	Same site	no need grading	Δ	960	8.69	8,344.32
A-09	Somoung	I	Same site	no need grading	Δ	960	8.69	8,344.32
A-10	Na Souk	I	New site	Land to be cleared	o	948	0.66	621.89
A-11	Somoung	I	Same site	no need grading	Δ	960	8.69	8,344.32
A-14	Beng Vilai	I	Same site	no need grading	o	924	0.66	606.14
A-15	Pak Bo	I	Same site	no need grading	o	984	0.66	645.50
A-16	Somoung	I	Same site	no need grading	Δ	960	8.69	8,344.32
A-17	Somoung	I	Same site	no need grading	Δ	960	8.69	8,344.32
A-18	Somoung	I	Same site	no need grading	Δ	960	8.69	8,344.32
SOW1						7,573		35,739.04

Table-B

SITE No.	Name	SOW	Line	Cost of Line Extension			Cost of Pole Installation			Total Amount		
				Unit	Qty	U/P	Amount	Unit	Qty		U/P	Amount
A-02	Halang Nhai	I	MV	lm	100	65.00	6,500.00	No.	2	2,870.00	5,740.00	12,240.00
SOW1		I										12,240.00

Table-C

	HC-A	1,660.50	HC-B	1,414.50	HC-B'	1,414.50	SH	21,090.40	Total Amount
SOW1	1	A-05	3	A-02, A-03, A-10	0		4	A-01, A-07, A-14, A-15	90,265.60

A5 テクニカルノート (T/N)

1) 現地調査Ⅱ (平成24年6月13日)

TECHNICAL NOTES


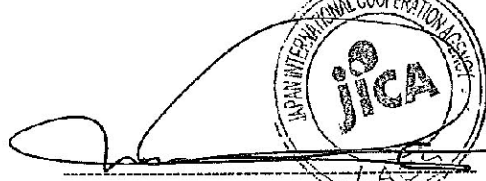
On the Project for Strengthening Health Service Network
In Southern Provinces in Lao People's Democratic Republic

Regarding Preparatory Survey on the Project for Strengthening Health Service Network in Southern Provinces (hereinafter referred to as "the Project"), the Minutes of Discussions (M/D) was signed on 5th of June, 2012 between Ministry of Health of Lao PDR (hereinafter referred to as "MOH") and JICA Preparatory Survey Team (hereinafter referred to as "the Team").

The consultant team of the Team (hereinafter referred to as "the Consultant") had a series of discussions with officials concerned and conducted its study and field surveys. Consequently, through discussions with MOH, both parties confirmed the following items described in the attached sheets:

1. Standard Plans for Health Center and Staff House for the Project
2. Provision of Microscope for the Project

Vientiane, June 13th, 2012



Mr. Mitsuo OCHI
Chief Consultant
Preparatory Survey Team
Japan International Cooperation Agency
JAPAN



Assoc. Prof. Dr. Chanphomma VONGSAMPHANH
Director General
Department of Health Care
Ministry of Health
LAO PEOPLE'S DEMOCRATIC REPUBLIC

ATTACHMENT

1. Standard Plans for Health Center and Staff House for the Project

The Consultant explained to MOH that considerations on the following points have been given in preparation of the standard plans for health center and staff house for the Project:

- (1) Toilet facilities are recommended to be separated from main building in order to avoid secondary infection of communicable diseases;
- (2) Pharmacy/Accounting Room, Outpatient Department (OPD)/Treatment Room, Pregnant Women's Consultation Room and Delivery Room shall be placed side by side with consideration of functional flow of staff as well as efficiency in providing healthcare services;
- (3) Delivery room shall be enlarged with consideration of workability and laying-out of the equipment to be provided by the Project;
- (4) Number of ward shall be two (2) with consideration of flexible use such as separating child and adult inpatients, male and female inpatients, and so on;
- (5) Expanded Program on Immunization (EPI) is recommended to be done in the Pregnant Women's Consultation Room; and,
- (6) Kitchen for staff house shall be reasonably away from the toilet with consideration of keeping better hygienic conditions.

And, as a result of mutual discussions held between MOH and the Consultant, both sides agreed on the plans for Type A Health Center, Type B Health Center and Staff House as shown in Annex-1 and Annex-2 shall be adopted as standard plans for the Project in principle. In addition, both sides agreed that location of toilet facilities for target health center without staff house and number of toilet and shower room shall be confirmed in November 2012.

2. Provision of Microscope for the Project

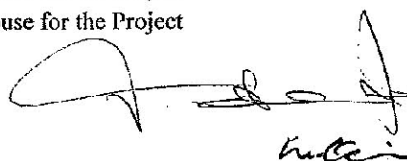
For the provision of microscope for the Project, the Lao side agreed to provide the following documents by not later than the end of July 2012:

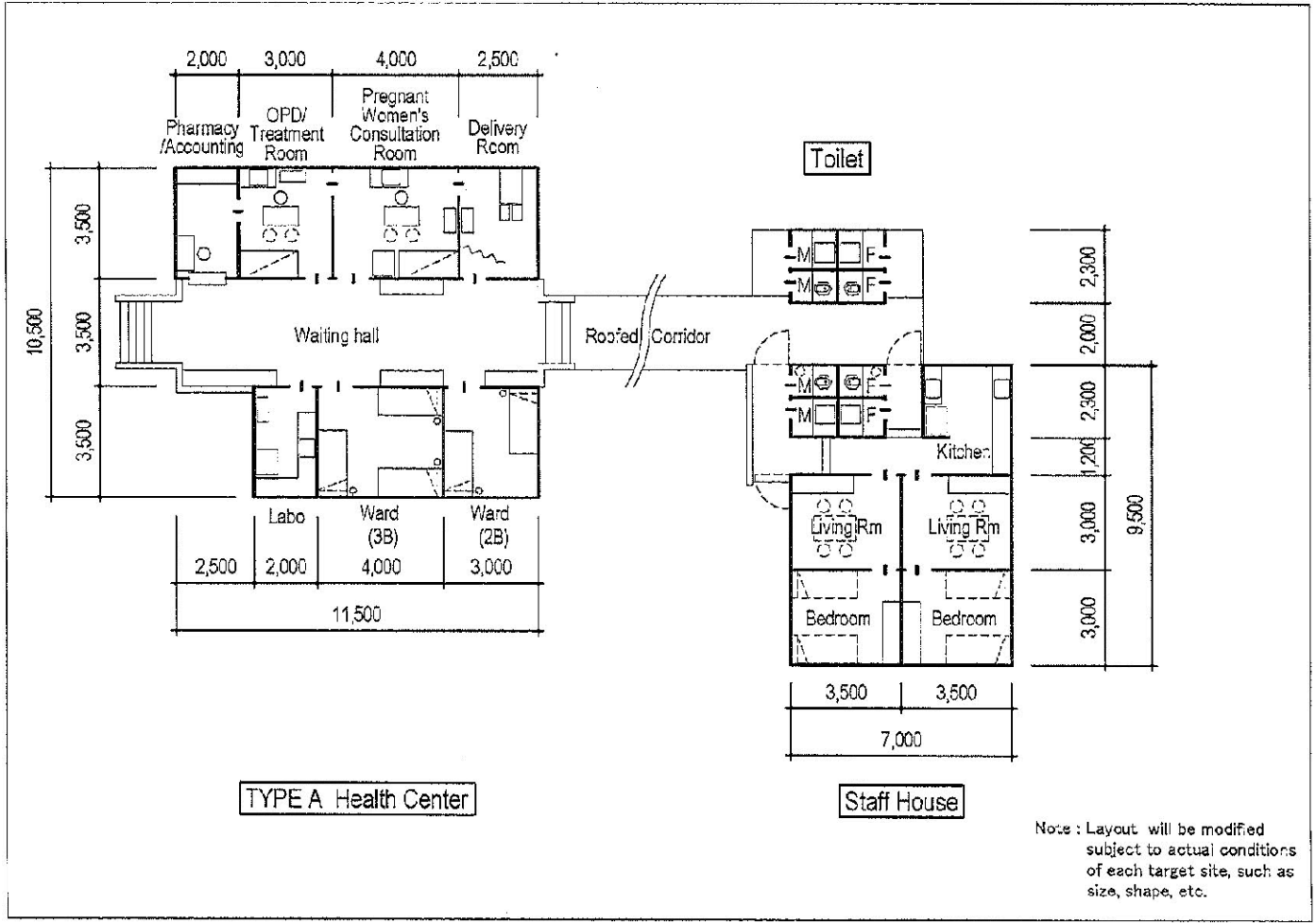
- (1) Lists of target health center(s) for each province i.e. Attapeau, Champasak, Salavan and Sekong, which requires provision of microscope; and,
- (2) List of Reasons (background, needs, etc) for each health center on why the selected target health center(s) requires the microscope.
- (3) Training plans for laboratory technician and/or health staff and their assignment schedule to the target health center(s) mentioned above.

And, both sides agreed that the selection of the target health center(s) to be provided with microscope shall be made by Japan side through survey and analysis (needs and impact based) from the lists of target health center(s) as well as giving consideration of the training plans and assignment schedule mentioned above. The final selection of target health center(s) will be confirmed in November 2012.

Annex-1 : Standard Plan for "Type A" Health Center with Staff House for the Project

Annex-2 : Standard Plan for "Type B" Health Center with Staff House for the Project



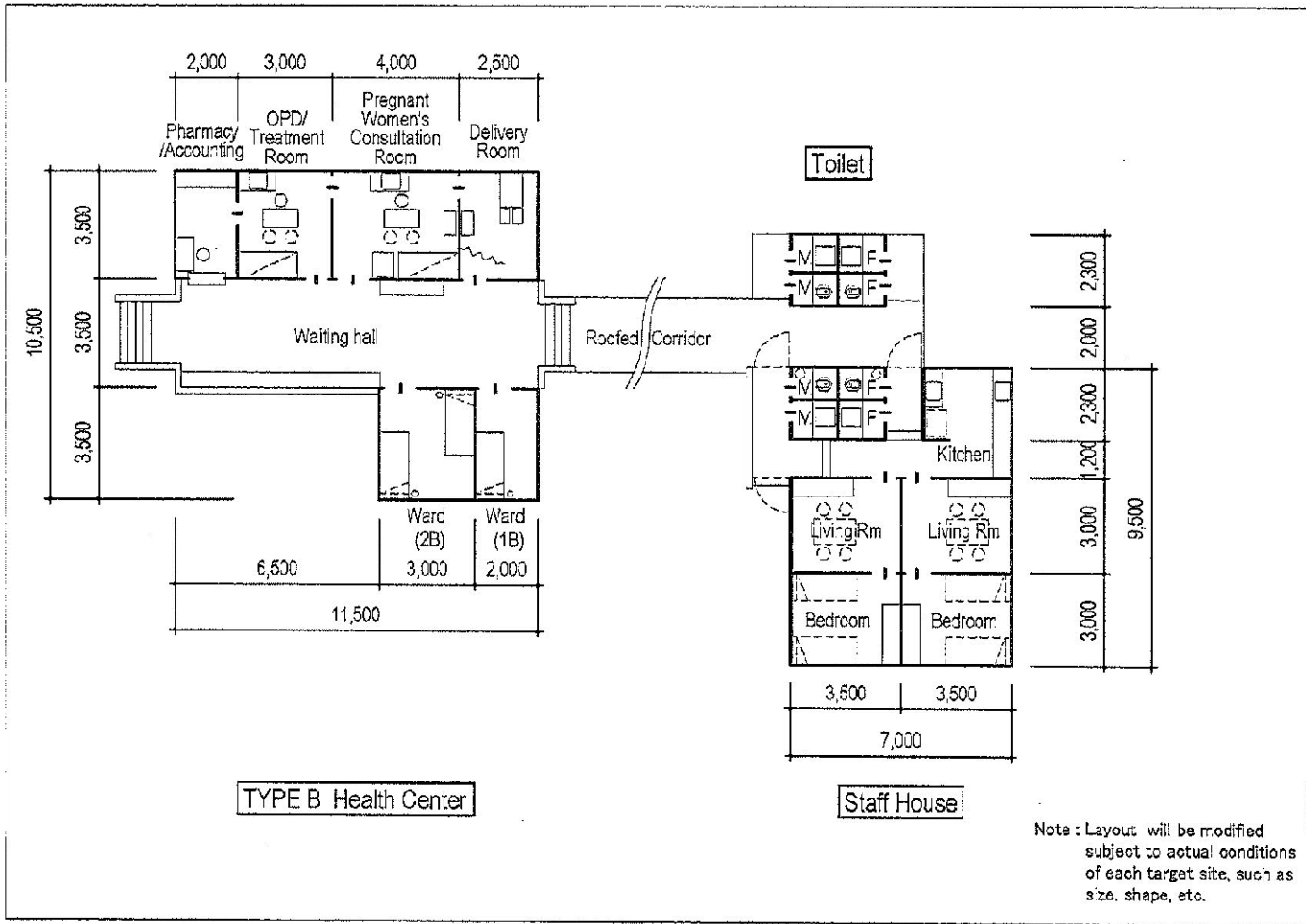


Standard Plan for "Type A" Health Center with Staff House for the Project

Annex-1

[Handwritten signature]

Standard Plan for "Type B" Health Center with Staff House for the Project



- 4 -

Handwritten signature and initials

A5-4

2) 入札参考資料説明 (平成 25 年 4 月 25 日)

TECHNICAL NOTES

On the Project for Strengthening Health Service Network
In Southern Provinces in Lao People's Democratic Republic

Regarding the Preparatory Survey on the Project for Strengthening Health Service Network in Southern Provinces (hereinafter referred to as "the Project"), JICA sent the 4th Survey Team for the explanation of the reference tender documents and discussion of the relevant issues for the Preparatory Survey (hereinafter referred to as "the Team"), which consisted of the consultant team of the Team (hereinafter referred to as "the Consultant") from April 21 to 26, 2013

The Consultant had a series of discussions with officials concerned and conducted its study and field surveys. And consequently, through discussions with MOH, both parties confirmed the following items described in the attached sheets:

1. Reference tender documents for the Project
2. Priority of the target sites and components for the Project
3. Measures to be taken by the Lao side

Vientiane, April 25th, 2013



Mr. Mitsuo OCHI
Chief Consultant
Preparatory Survey Team
Japan International Cooperation Agency
JAPAN

Assoc. Prof. Dr. Chanphomma VONGSAMPHANH
Director General
Department of Health Care
Ministry of Health
LAO PEOPLE'S DEMOCRATIC REPUBLIC

ATTACHMENT

1. Reference Tender Documents for the Project

Lao side confirmed and acknowledged the contents of the reference tender documents for each tender package which is summarized in ANNEX-1.

2. Priority of the Target Sites and Support Components for the Project

Although the priority of the target sites and support components for the Project was agreed by both sides (please refer to the Minutes of Discussions signed by both sides on June 5, 2012), both sides re-confirmed the priority of the target sites and components shown in ANNEX-2.

Furthermore, both sides also agreed that some of the target sites and components shown in ANNEX-2 may have to be excluded prior to and during implementation phase of the Project due to depreciation of Japanese Yen as well as any other budgetary deficit which may be caused by some factors such as price escalation in the Lao PDR etc.

3. Measures to be taken by the Lao Side

Although undertaking of the measures for the smooth implementation of the Project such as site clearance, power connection etc by the Lao side was agreed in the Minutes of Discussions signed by both sides on June 5, 2012, the Lao side re-confirmed the said undertakings by the Lao side and confirmed and acknowledged the following:

- (1) Site clearance should be completed for all required target sites prior to the finalization of the tender documents for each batch that is scheduled to be around the end of June 2013, the middle of January 2014 and the end of June 2014 for Batch-1, Batch-2 and Batch-3 respectively. (Please refer to ANNEX-3 for details)
- (2) Power connection should also be completed for all required sites for Batch-2 and Batch-3 before the middle of January 2014 and the end of June 2014 respectively. (Please refer to ANNEX-3 for details)
- (3) The said site clearance and power connection should be carried out at the target sites (areas) which correspond with the land certificate provided by the Lao side as well as land survey map prepared by the Team.
- (4) Any target sites failed to complete required site clearance and power connection before the deadline shall be excluded from the tender documents for each batch.

And, the Lao side further confirmed that the schedule for the necessary budget allocation for and implementation of the undertakings mentioned above should be informed to JICA Laos Office before the end of May 2013.

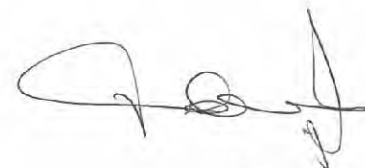
- ANNEX-1 : Summary of Reference Tender Documents for the Project
ANNEX-2 : Priority of Target Sites and Support Components for the Project
ANNEX-3 : Summary of Target Sites and Deadline for Site Clearance and Power Connection

Summary of Reference Tender Documents for the Project

No.	Work Item	Tender/ Contract No.	Tender Doc	Remarks
1	Well Construction (1 Volume)	01-01-01	Tender Documents ^{*1}	Including the Drawings for Location Map, Site Layout Plans and Typical Section of Well
2	Building Facilities Construction (3 Volume)	02-02-01	Vol. I: Tender Documents ^{*1}	
			Vol. II: Technical Specifications	
			Vol. III: Drawings	Including the Drawing for Photovoltaic System (PV)
3	Procurement of Equipment (2 Volumes)	03-02-01	Vol. I: Tender Documents ^{*2}	Bill of Quantities
			Vol. II: Technical Specifications	
4	Procurement of Plaque (1 Volume)	04-02-01	Tender Documents ^{*2}	Including the Drawing for Plaque and Key Plans

Note *1: Same format is used for Well Construction and Building Facilities Construction

Note *2: Same format is used for Procurement of Equipment and Procurement of Plaque



M.O

Priority of Target Sites and Components for the Project

(Classification by Components and Scope of Works: SOW)

SOW / Priority Rank	HC (67site)			DH (9site)		
	Facilities (51(+1)+32)		Equipment (67)	Fac.	Eq.	
	IIC (45(+1)+6)	SH (25+7)				
I	1	A-02 A-03 A-05 A-10 C-06 C-09 C-10 C-12 C-13 C-18 C-20 S-01 S-02 S-04 S-05 S-06 S-08 S-09 S-10 S-12 S-16 S-17 S-18 X-04 X-06 X-07 X-09 (27)	A-01 A-07 A-14 A-15 C-06 C-12 X-02 X-03 X-04 X-07 (10)	A-01 A-02 A-03 A-05 A-07 A-08 A-09 A-10 A-14 A-15 A-18 A-19 A-22 C-06 C-09 C-10 C-12 C-13 C-14 C-18 C-20 S-01 S-02 S-04 S-05 S-06 S-08 S-09 S-10 S-12 S-16 S-17 S-18 X-02 X-03 X-04 X-06 X-07 X-09 (39)		D-01 ~D-09 (1)
	2	C-04 C-05 (2)		A-06 A-12 A-13 A-17 A-20 C-04 C-05 X-01 (7)		
II	3	A-19* C-02 C-03 C-08 C-11 C-16 C-17 S-07 S-11 S-13 S-14 S-15 X-05 X-08 (14)	A-08 A-09 A-12 A-18 A-19 A-22 C-04 X-01 X-06 X-09 (10)	A-04 C-01 C-02 C-03 C-07 C-08 C-11 C-16 C-17 S-03 S-07 S-11 S-13 S-14 S-15 X-05 X-08 (18)		
	4	A-04 C-01 S-03 (3)	X-05 X-08 (2)	A-11 C-15 C-19 (3)		
	4'		S-04 S-17 S-18 (3)			
III	5	C-15 (1)	A-06 A-11 A-13 A-17 A-20 C-08 (6)			
	6	A-01 A-07 C-07 C-14 C-19 (5)	C-07 (1)		D-01 ~D-09 (1)	

Notes

- (1): Site No. shown in **black bold font** indicates re-construction of HC
- (2): Site No. shown in **red bold font** indicates new construction of HC.
- (3): Site No. shown in **blue bold font** indicates repairing of the existing HC has been requested.
- (4): Site No. shown in **blue bold italic font *** indicates repairing roof of the existing HC has been requested.
- (5): Site No. shown in **font with underline** has been drilled test borehole.
- (6): Site No. shown in **font with underline** indicates new construction of well in Batch-1.



M.O.

Summary of Target Sites and Deadline for Site Clearance and Power Connection

(Classification of Target Sites for Site Clearance by Scope of Works: SOW)

Batch		Batch-1 (28 sites)	Batch-2 (14 sites)	Batch-3 (16 sites)
Deadline		End of June 2013	Middle of January 2014	End of June 2014
I	1	<u>A-02</u> <u>A-05</u> <u>A-10</u> <u>A-15</u> <u>C-09</u> <u>C-10</u> <u>C-12</u> <u>C-18</u> <u>C-20</u> <u>S-05</u> <u>S-09</u> <u>S-16</u> <u>S-17</u> <u>S-18</u> (11)	<u>C-06</u> <u>C-13</u> <u>S-01</u> <u>S-02</u> <u>S-04</u> <u>S-06</u> (6)	<u>A-01</u> <u>A-03</u> <u>A-07</u> <u>A-14</u> <u>S-08</u> <u>S-10</u> <u>S-12</u> <u>X-02</u> <u>X-03</u> <u>X-04</u> <u>X-06</u> <u>X-07</u> <u>X-09</u> (13)
	2	<u>C-04</u> <u>C-05</u> (2) (0)	(0)	(0)
II	3	<u>A-08</u> <u>A-09</u> <u>A-12</u> <u>C-02</u> <u>C-03</u> <u>C-16</u> <u>S-07</u> <u>S-11</u> <u>X-05</u> (9)	<u>A-18</u> <u>A-19</u> <u>A-22</u> <u>C-08</u> <u>C-11</u> <u>C-17</u> <u>S-14</u> <u>S-15</u> (8)	<u>S-13</u> <u>X-01</u> <u>X-08</u> (3)
	4	<u>A-04</u> <u>C-01</u> <u>S-03</u> (3)	(0)	(0)
	4'	(0)	(0)	(0)

(Classification of Target Sites for Power Connection by Scope of Works: SOW)

Batch		Batch-1 (None)	Batch-2 (11 sites)	Batch-3 (10 sites)
Deadline		End of June 2013	Middle of January 2014	End of June 2014
I	1	(0)	<u>A-02</u> <u>C-06</u> <u>C-10</u> <u>S-02</u> <u>S-04</u> <u>S-16</u> <u>S-18</u> (7)	<u>A-05</u> <u>C-09</u> <u>C-20</u> <u>S-12</u> <u>X-04</u> <u>X-07</u> <u>X-09</u> (7)
	2	(0)	(0)	(0)
II	3	(0)	<u>C-08</u> <u>C-17</u> (2)	<u>C-03</u> <u>S-07</u> <u>X-05</u> (3)
	4	(0)	<u>C-01</u> <u>S-03</u> (2)	(0)
	4'	(0)	(0)	(0)

A6 参考資料

No.	名称	形態	Original or Copy	言語	発行年度	発行機関
1	7 th National Health Sector Development Plan (2011-2015)	データ	Copy	英語	2011	保健省 Lao PDR
2	6 th National Health Sector Development Plan (2006-2010)	データ	Copy	英語	2006	保健省 Lao PDR
3	保健省組織図	データ	Copy	英語	2006	保健省 Lao PDR
4	National Strategies on Infection Control for Central and Provincial Hospital	図書	Original	ラオ語 英語	2008	保健省 Lao PDR
5	National Strategy of Maternal & Infant Mortality Reduction 2009-2015	データ	Copy	英語	2009	保健省 Lao PDR
6	Guidelines for the Scope of the Nursing Practice 2007	データ	Copy	英語	2007	保健省 Lao PDR
7	Nursing / Midwifery school Management and Implementation Guidelines	データ	Copy	英語	2008	保健省 Lao PDR
8	National Nutrition Policy	データ	Copy	英語	2008	保健省 Lao PDR
9	National Food Safety Policy	データ	Copy	英語	2009	保健省 Lao PDR
10	Law on Water and Water Resources	データ	Copy	英語	1996	保健省 Lao PDR
11	Law on Hygiene, Disease Prevention and Health Promotion	データ	Copy	英語	2001	保健省 Lao PDR
12	Law on Health Care	データ	Copy	英語	2005	保健省 Lao PDR
13	Law on Drugs and Medical Product	データ	Copy	英語	2000	保健省 Lao PDR
14	National Strategy for Malaria Control and Pre-Elimination 2011-2015	データ	Copy	英語	2010	保健省 Lao PDR
15	The National Strategy for the Rural Water Supply and Environmental Health	データ	Copy	英語	2004	保健省 Lao PDR
16	National Health Information System Strategic Plan (HISSP) 2009-2015	データ	Copy	英語	2009	保健省 Lao PDR
17	Human Resources of Health Strategic Plan 2009-2020	データ	Copy	英語	2008	保健省 Lao PDR
18	Policy on Primary Health Care	データ	Copy	英語	2000	保健省 Lao PDR
19	Review of Health Management Information System	データ	Copy	英語	2004	保健省 Lao PDR
20	Statistic Report FY 2009-2010	データ	Original		2010	保健省 Lao PDR
21	Multiple Indicator Cluster Survey	データ	Original		2006	保健省 Lao PDR
22	母子健康手帳	図書	Original	ラオ語		保健省 Lao PDR
23	List of Essential Medicines of Lao PDR	図書	Original	英語	2009	WHO
24	Financial and Administrative Systems in Lao PDR	データ	Copy	英語	2003	SIDA
25	Decree of the President	データ	Copy	英語	2003	大統領府 Lao PDR
26	Country Profile Lao PDR	データ	Copy	英語	2005	UN
27	GPAR SBSB Annual Progress Report	データ	Copy	英語	2011	UN
28	Public Expenditure Review Integrated Fiduciary Assessment	データ	Copy	英語	2007	WB, IMF, ADB and EC
29	Public Expenditure and Financial Accountability (PEFA)	データ	Copy	英語	2010	WB
30	気象データ (対象4県、アタプー、チャンパサック、サラワン、セコン)	データ	Copy	英語	2007-2011	気象水文局 Lao PDR
31	Socioeconomic Atlas LAO PDR an analysis based on 2005 Population and Housing Census	データ	Copy	ラオ語 英語	2005	計画投資省 Lao PDR
32	Multiple Indicator Cluster Survey	データ	Original		2006	計画投資省 Lao PDR
33	Survey on Monitoring the Paris Declaration LAO PDR Country Report	データ	Copy	英語	2008	計画投資省 Lao PDR
34	Year Book	データ	Copy	英語	2010	計画投資省 Lao PDR

No.	名称	形態	Original or Copy	言語	発行年度	発行機関
35	The Geography of Poverty and Inequality in the Lao PDR 2008	データ	Copy	英語		Swiss National Center of Competence in Research, International Food Policy Research Institute
36	Contract and BOQ of health center in Saravan (Lakornsy village、Lakompheng District) 契約、BOQ	データ	Copy	ラオ語		保健省 Lao PDR
37	Design Drawings of health center in Saravan (Lakornsy village、Lakompheng District) 設計図面	データ	Copy	英語		保健省 Lao PDR
38	セコン県 Nongnok 保健センター (WB 案件) 設計図書一式	資料	Copy	英語		保健省 Lao PDR
39	Technical Specification ADB Grant (Health Centers in Luangprabang Province) 特記仕様書	データ	Copy	英語		保健省 Lao PDR
40	ラオス建設業者、コンサルタント登録リスト	資料	Copy	英語		公共事業省 Lao PDR
41	Decree on Government Procurement of Goods, Works, Maintenance and Services No. 03/PM Dated 09 January 2004	図書	Original	英語		財務省 Procurement Monitoring Office Lao PDR
42	Standard Bidding Document Public Bidding	図書	Original	英語		財務省 Procurement Monitoring Office Lao PDR
43	Standard Bid Evaluation Form and Writing Bid Evaluation Report	図書	Original	英語		財務省 Procurement Monitoring Office Lao PDR
44	Procurement Manual	図書	Original	英語		財務省 Procurement Monitoring Office Lao PDR
45	Assessment of Solar Energy Potentials for Lao People's Democratic Republic	図書 CD	Original	英語		エネルギー省 Thailand、エネルギー局 Lao PDR
46	Current Status Electricity Map (対象4県、アタプー、チャンパサック、サラワン、セコン)	地図	Original	英語		エネルギー・鉱業省 Lao PDR
47	GIS 地図データ (対象4県、アタプー、チャンパサック、サラワン、セコン)	データ	Copy	英語		地理局
48	在ラオス日本大使館 プロジェクトリスト	データ	Copy	日本語		日本大使館
49	Sector Common Work Plan Monitoring Framework (SCWMF) プロGRESSレポート	データ、資料	Copy	英語	2012	JICA 技プロ CDSWC