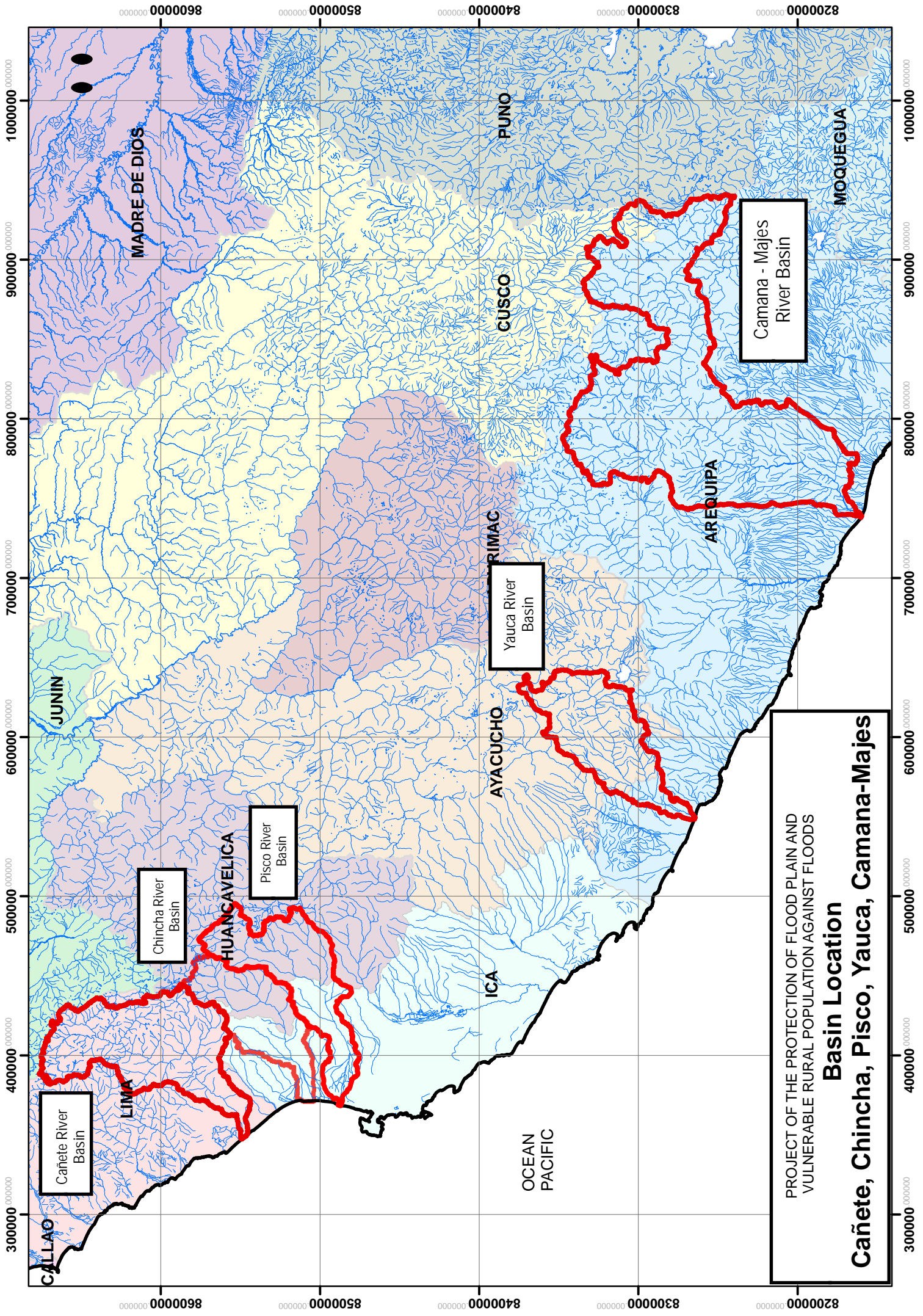


卷末資料

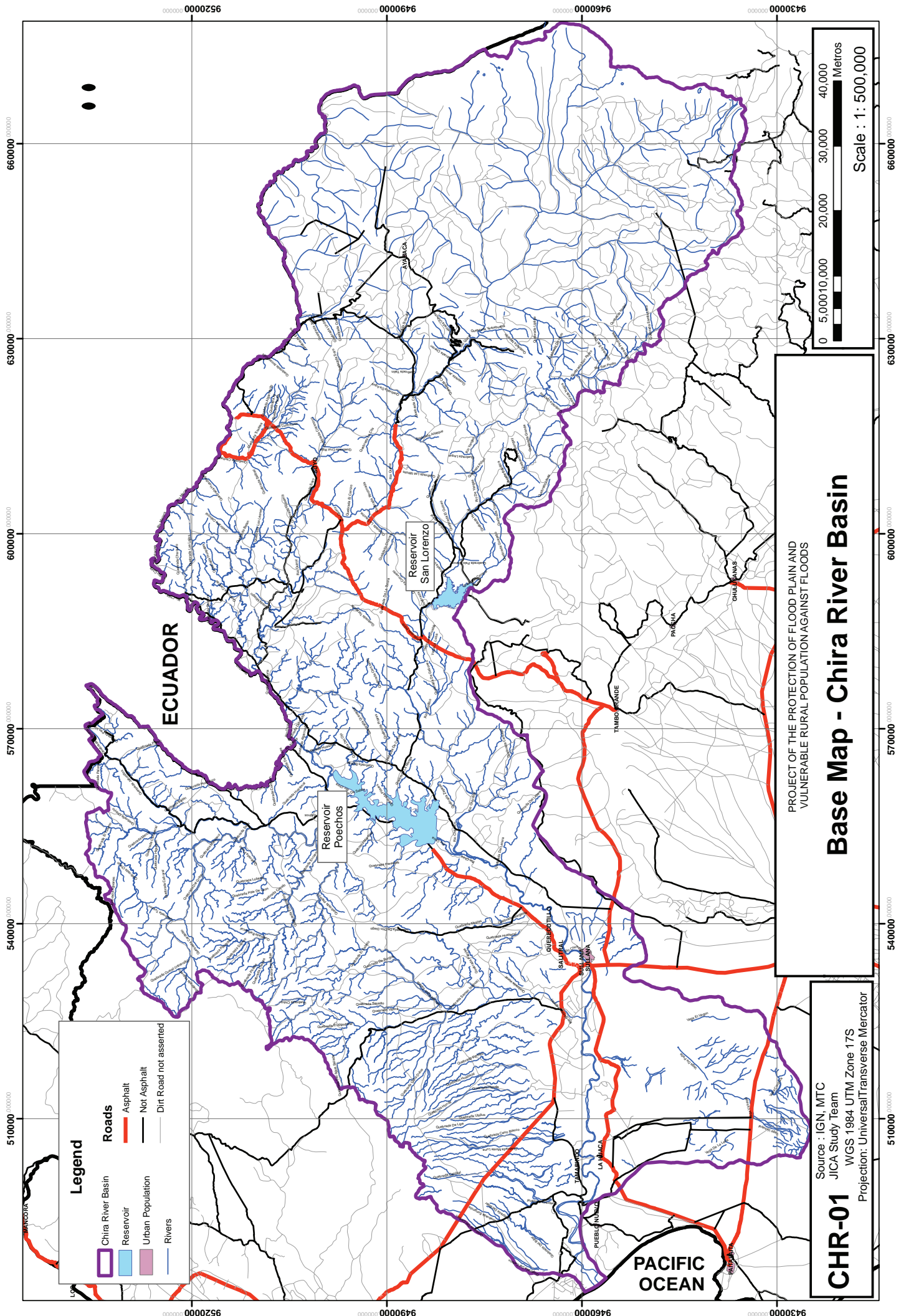
卷末資料
流域特性資料





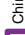
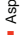
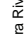
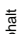
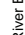

PROJECT OF THE PROTECTION OF FLOOD PLAIN AND
VULNERABLE RURAL POPULATION AGAINST FLOODS

Basin Location

Cañete, Chíncha, Piśco, Yauca, Camana-Majes



Legend

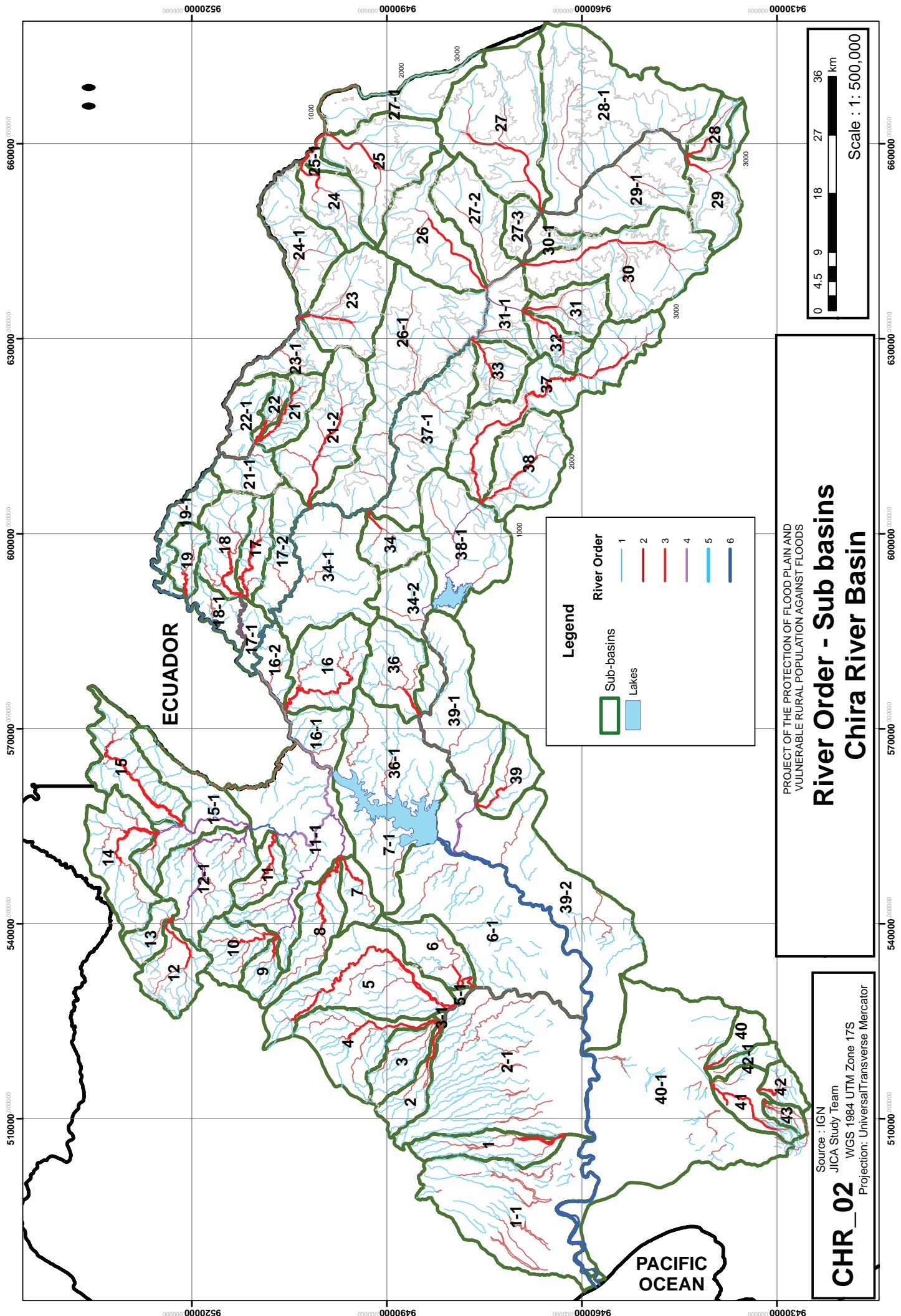
	Chira River Basin		Roads
	Reservoir		Asphalt
	Urban Population		Not Asphalt
	Rivers		Dirt Road not asserted

PROJECT OF THE PROTECTION OF FLOOD PLAIN AND VULNERABLE RURAL POPULATION AGAINST FLOODS

Base Map - Chira River Basin

CHR-01

Source : IGN, MTC
 JICA Study Team
 WGS 1984 UTM Zone 17S
 Projection: Universal Transverse Mercator



Source : IGN
 JICA Study Team
 WGS 1984 UTM Zone 17S
 Projection: UniversalTransverse Mercator

CHR_02

PROJECT OF THE PROTECTION OF FLOOD PLAIN AND
 VULNERABLE RURAL POPULATION AGAINST FLOODS

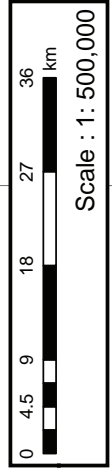
**River Order - Sub basins
 Chira River Basin**

Legend

- Sub-basins
- Lakes

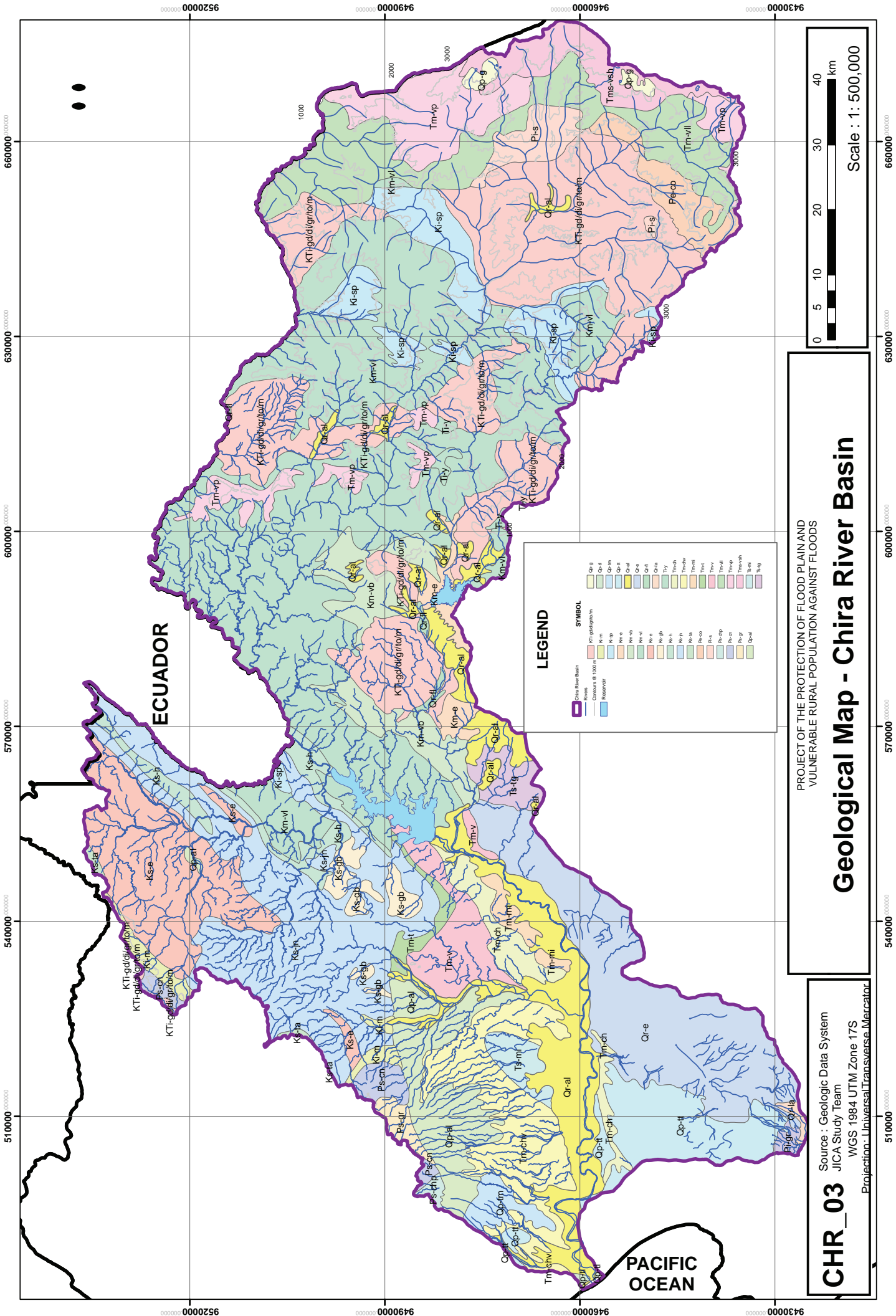
River Order

- 1
- 2
- 3
- 4
- 5
- 6



PACIFIC OCEAN

ECUADOR



ECUADOR

PACIFIC OCEAN

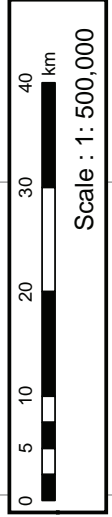
LEGEND

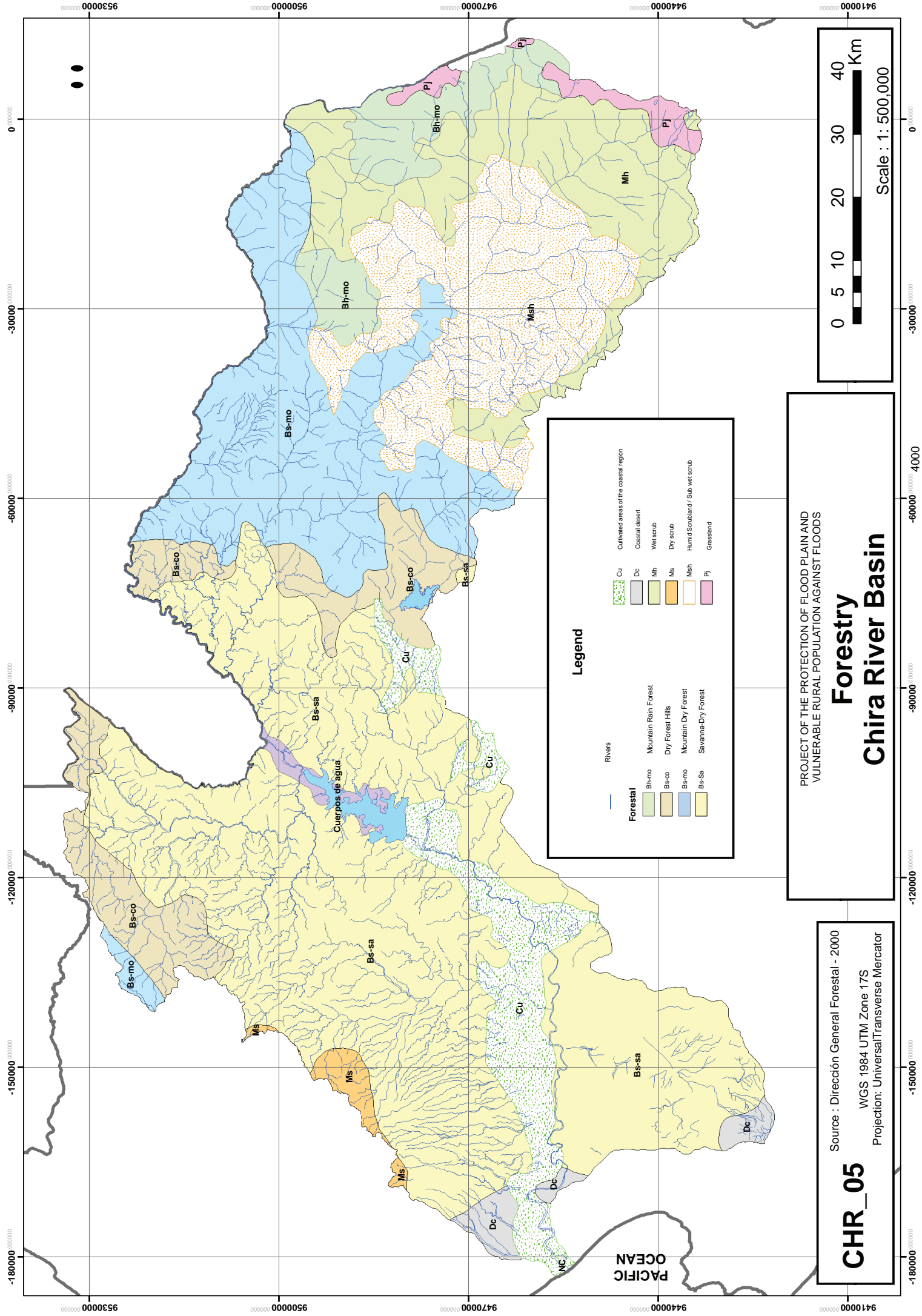
SYMBOL	DESCRIPTION
[Purple outline]	Chira River Basin
[Blue line]	Rivers
[Red line]	Contours @ 1000 m
[Blue square]	Reservoir
[Yellow square]	Qp-g
[Light blue square]	Qp-l
[Light green square]	Qp-m
[Light orange square]	Qp-a
[Light purple square]	Qp-b
[Light yellow square]	Qp-c
[Light pink square]	Qp-d
[Light cyan square]	Qp-e
[Light magenta square]	Qp-f
[Light brown square]	Qp-h
[Light grey square]	Qp-i
[Light olive square]	Qp-j
[Light teal square]	Qp-k
[Light tan square]	Qp-l
[Light blue square]	Qp-m
[Light green square]	Qp-n
[Light orange square]	Qp-o
[Light purple square]	Qp-p
[Light yellow square]	Qp-q
[Light pink square]	Qp-r
[Light cyan square]	Qp-s
[Light magenta square]	Qp-t
[Light brown square]	Qp-u
[Light grey square]	Qp-v
[Light olive square]	Qp-w
[Light teal square]	Qp-x
[Light tan square]	Qp-y
[Light blue square]	Qp-z
[Light green square]	Tm-vp
[Light orange square]	Tm-v
[Light purple square]	Tm-vi
[Light yellow square]	Tm-vii
[Light pink square]	Tm-viii
[Light cyan square]	Tm-ix
[Light magenta square]	Tm-x
[Light brown square]	Tm-xi
[Light grey square]	Tm-xii
[Light olive square]	Tm-xiii
[Light teal square]	Tm-xiv
[Light tan square]	Tm-xv
[Light blue square]	Tm-xvi
[Light green square]	Tm-xvii
[Light orange square]	Tm-xviii
[Light purple square]	Tm-xix
[Light yellow square]	Tm-xx
[Light pink square]	Tm-xxi
[Light cyan square]	Tm-xxii
[Light magenta square]	Tm-xxiii
[Light brown square]	Tm-xxiv
[Light grey square]	Tm-xxv
[Light olive square]	Tm-xxvi
[Light teal square]	Tm-xxvii
[Light tan square]	Tm-xxviii
[Light blue square]	Tm-xxix
[Light green square]	Tm-xxx
[Light orange square]	Kt-g
[Light purple square]	Kt-l
[Light yellow square]	Kt-m
[Light pink square]	Kt-a
[Light cyan square]	Kt-b
[Light magenta square]	Kt-c
[Light brown square]	Kt-d
[Light grey square]	Kt-e
[Light olive square]	Kt-f
[Light teal square]	Kt-g
[Light tan square]	Kt-h
[Light blue square]	Kt-i
[Light green square]	Kt-j
[Light orange square]	Kt-k
[Light purple square]	Kt-l
[Light yellow square]	Kt-m
[Light pink square]	Kt-n
[Light cyan square]	Kt-o
[Light magenta square]	Kt-p
[Light brown square]	Kt-q
[Light grey square]	Kt-r
[Light olive square]	Kt-s
[Light teal square]	Kt-t
[Light tan square]	Kt-u
[Light blue square]	Kt-v
[Light green square]	Kt-w
[Light orange square]	Kt-x
[Light purple square]	Kt-y
[Light yellow square]	Kt-z

PROJECT OF THE PROTECTION OF FLOOD PLAIN AND VULNERABLE RURAL POPULATION AGAINST FLOODS

Geological Map - Chira River Basin

CHR_03
 Source : Geologic Data System
 JICA Study Team
 WGS 1984 UTM Zone 17S
 Projection: Universal Transverse Mercator





PROJECT OF THE PROTECTION OF FLOOD PLAIN AND
VULNERABLE RURAL POPULATION AGAINST FLOODS

Forestry Chira River Basin

Source : Dirección General Forestal - 2000
WGS 1984 UTM Zone 17S
Projection: Universal Transverse Mercator

CHR_05

