

PROJECT TITLE :  
THE PROJECT FOR CONSTRUCTION OF  
AJILCHIN FLY-OVER IN ULAANBAATAR CITY

DESIGNED BY ;  
CTI Engineering International Co., Ltd.  
Chodai Co., Ltd.  
International Development Institute

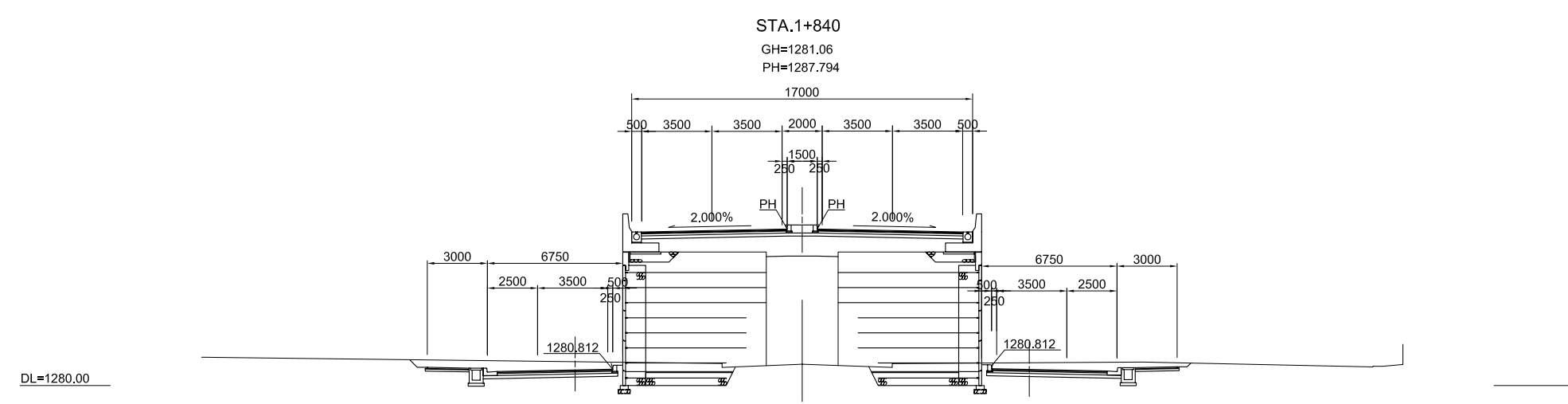
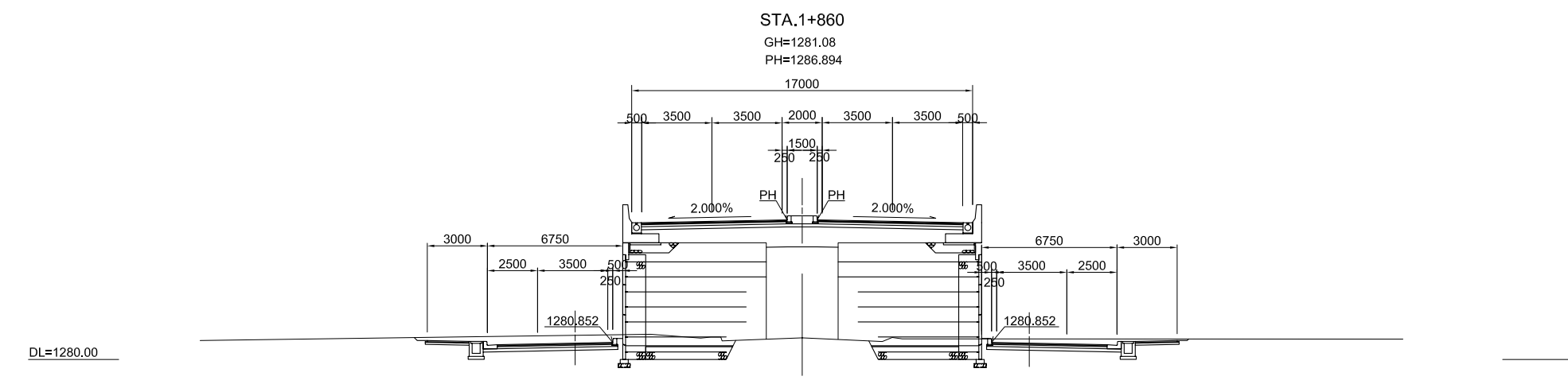
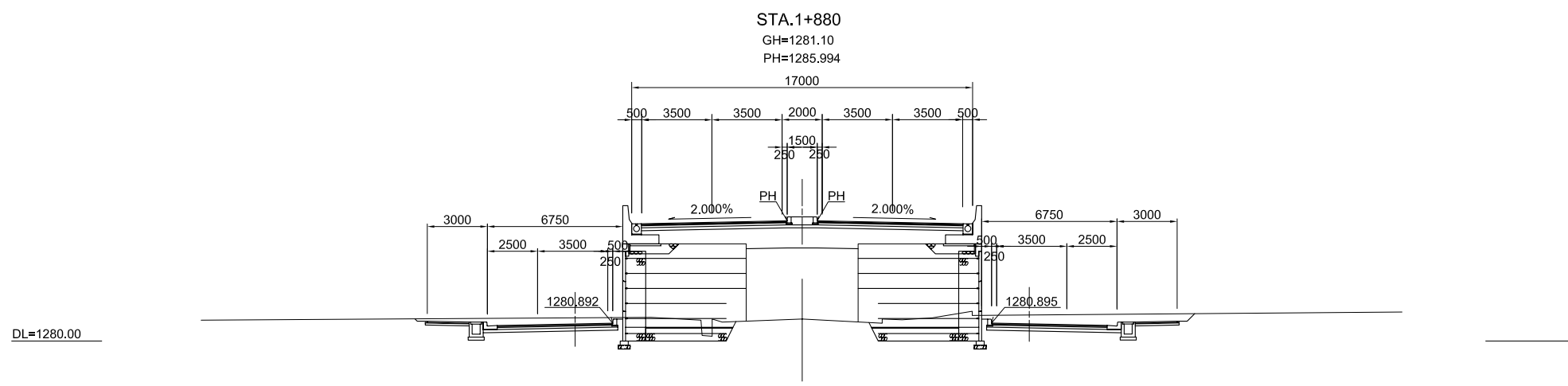
APPROVED BY :

DRAWING TITLE :  
CROSS SECTION 28/35

SCALE:  
1:300

DRAWING No.  
108

HIGHWAY



PROJECT TITLE :  
THE PROJECT FOR CONSTRUCTION OF  
AJILCHIN FLY-OVER IN ULAANBAATAR CITY

DESIGNED BY ;  
CTI Engineering International Co., Ltd.  
Chodai Co., Ltd.  
International Development Institute

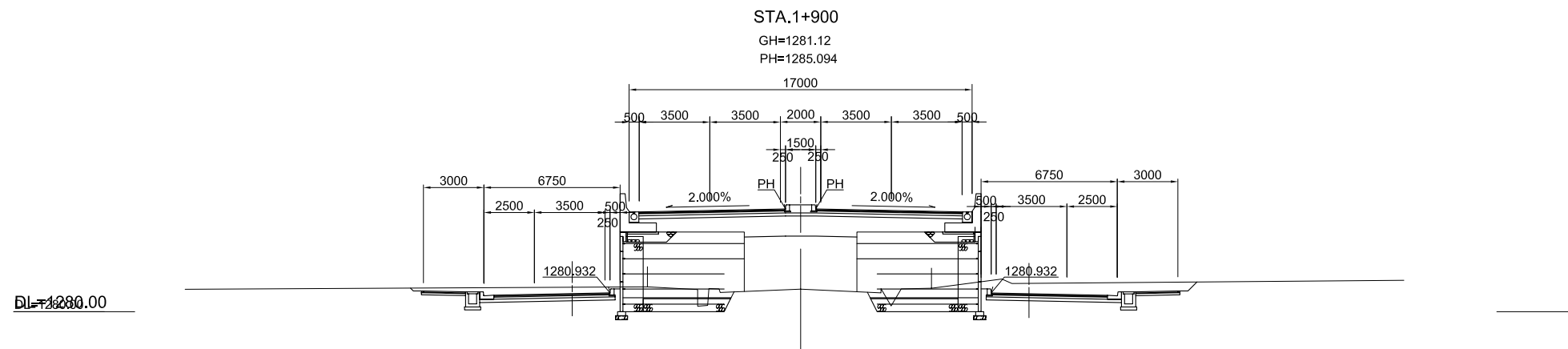
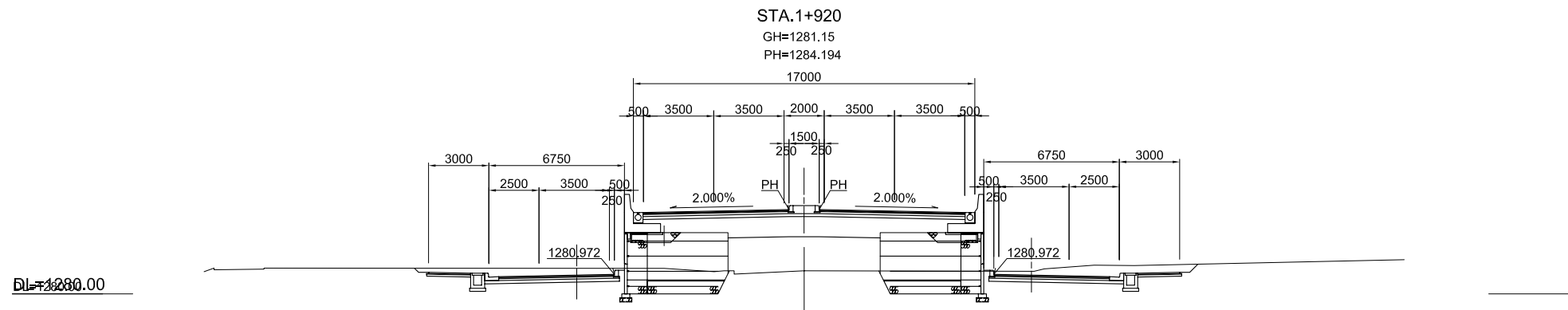
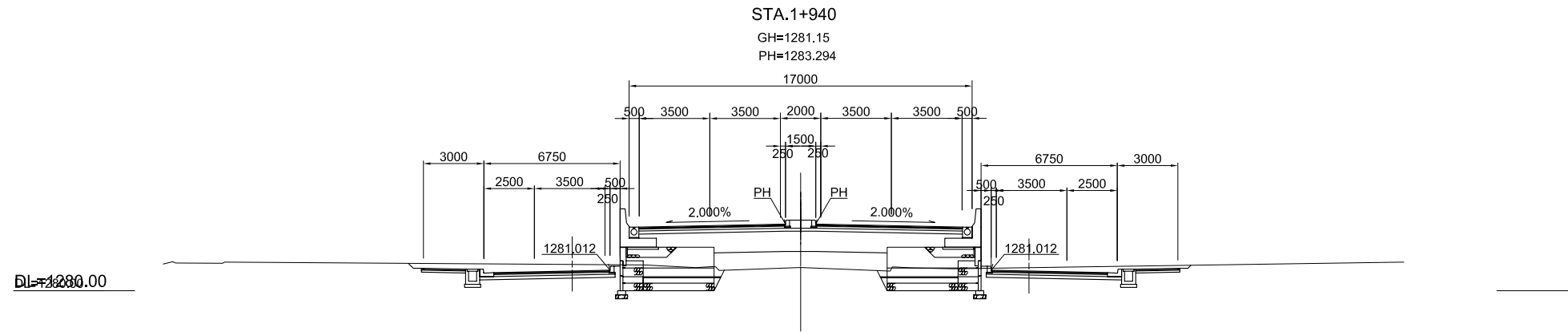
APPROVED BY :

DRAWING TITLE :  
CROSS SECTION 29/35

SCALE:  
1:300

DRAWING No.  
109

HIGHWAY



PROJECT TITLE :  
THE PROJECT FOR CONSTRUCTION OF  
AJILCHIN FLY-OVER IN ULAANBAATAR CITY

DESIGNED BY ;  
CTI Engineering International Co., Ltd.  
Chodai Co., Ltd.  
International Development Institute

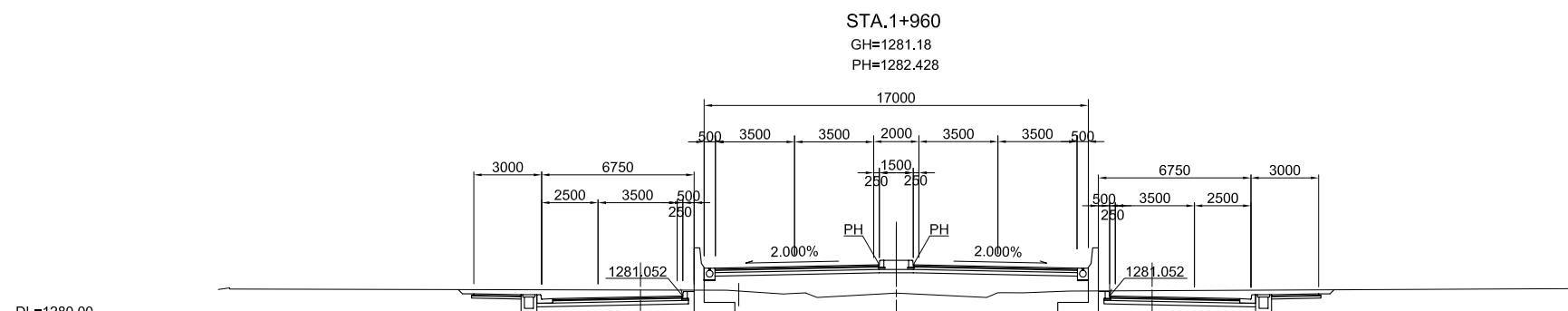
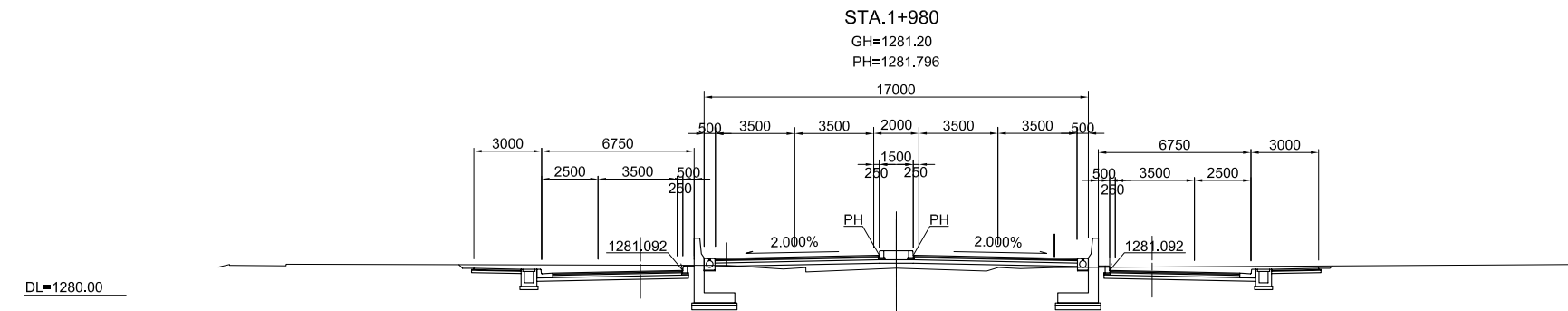
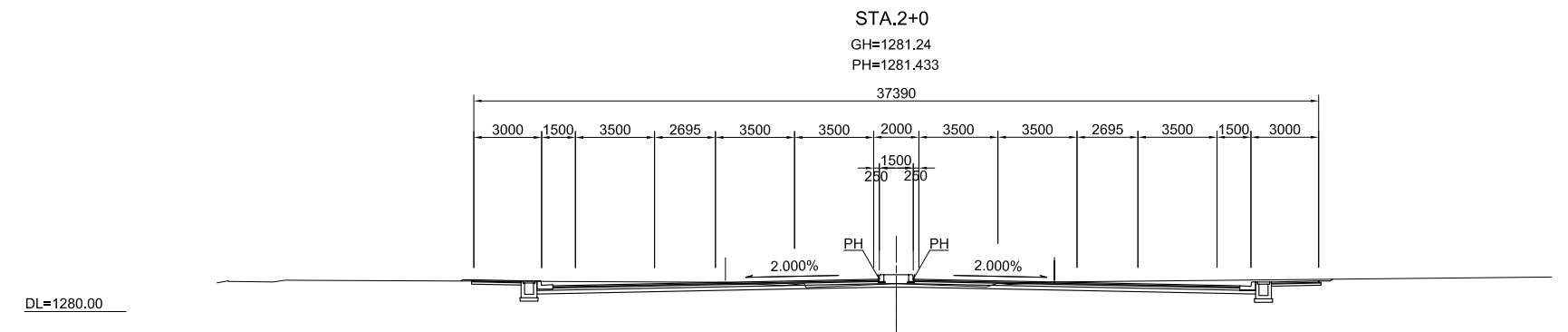
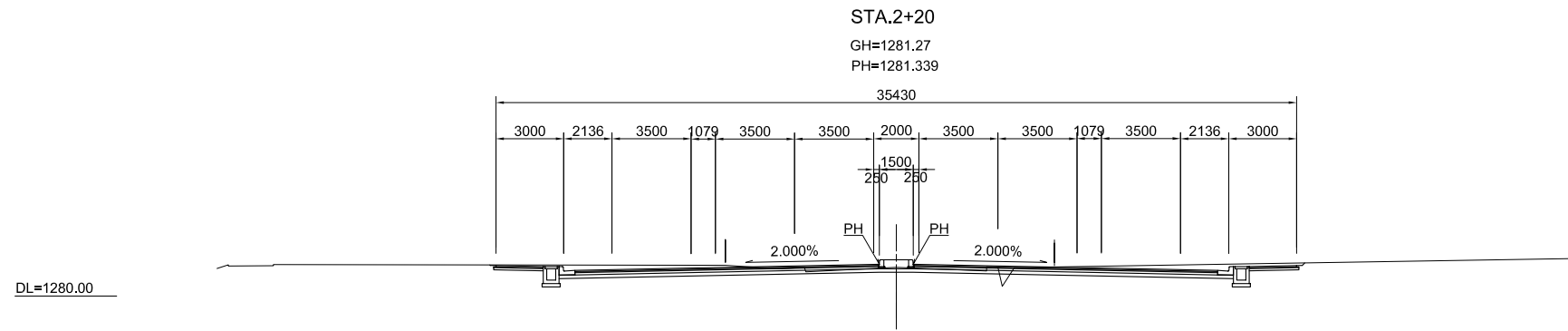
APPROVED BY :

DRAWING TITLE :  
CROSS SECTION 30/35

SCALE:  
1:300

DRAWING No.  
110

HIGHWAY



PROJECT TITLE :  
THE PROJECT FOR CONSTRUCTION OF  
AJILCHIN FLY-OVER IN ULAANBAATAR CITY

DESIGNED BY ;  
CTI Engineering International Co., Ltd.  
Chodai Co., Ltd.  
International Development Institute

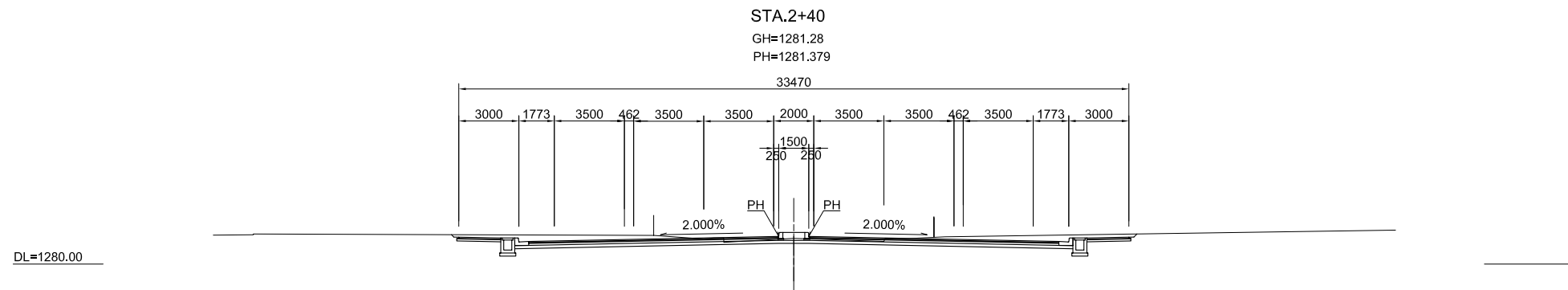
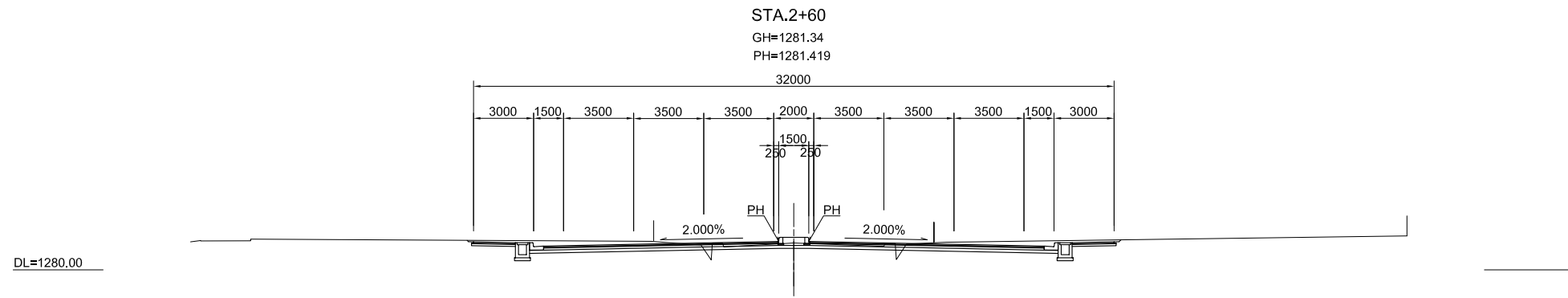
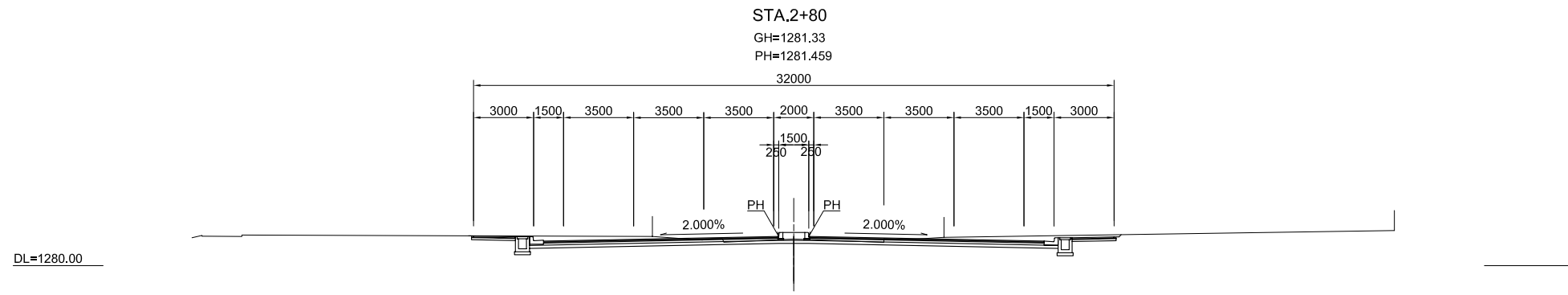
APPROVED BY :

DRAWING TITLE :  
CROSS SECTION 31/35

SCALE:  
1:300

DRAWING No.  
111

HIGHWAY



PROJECT TITLE :  
THE PROJECT FOR CONSTRUCTION OF  
AJILCHIN FLY-OVER IN ULAANBAATAR CITY

DESIGNED BY ;  
CTI Engineering International Co., Ltd.  
Chodai Co., Ltd.  
International Development Institute

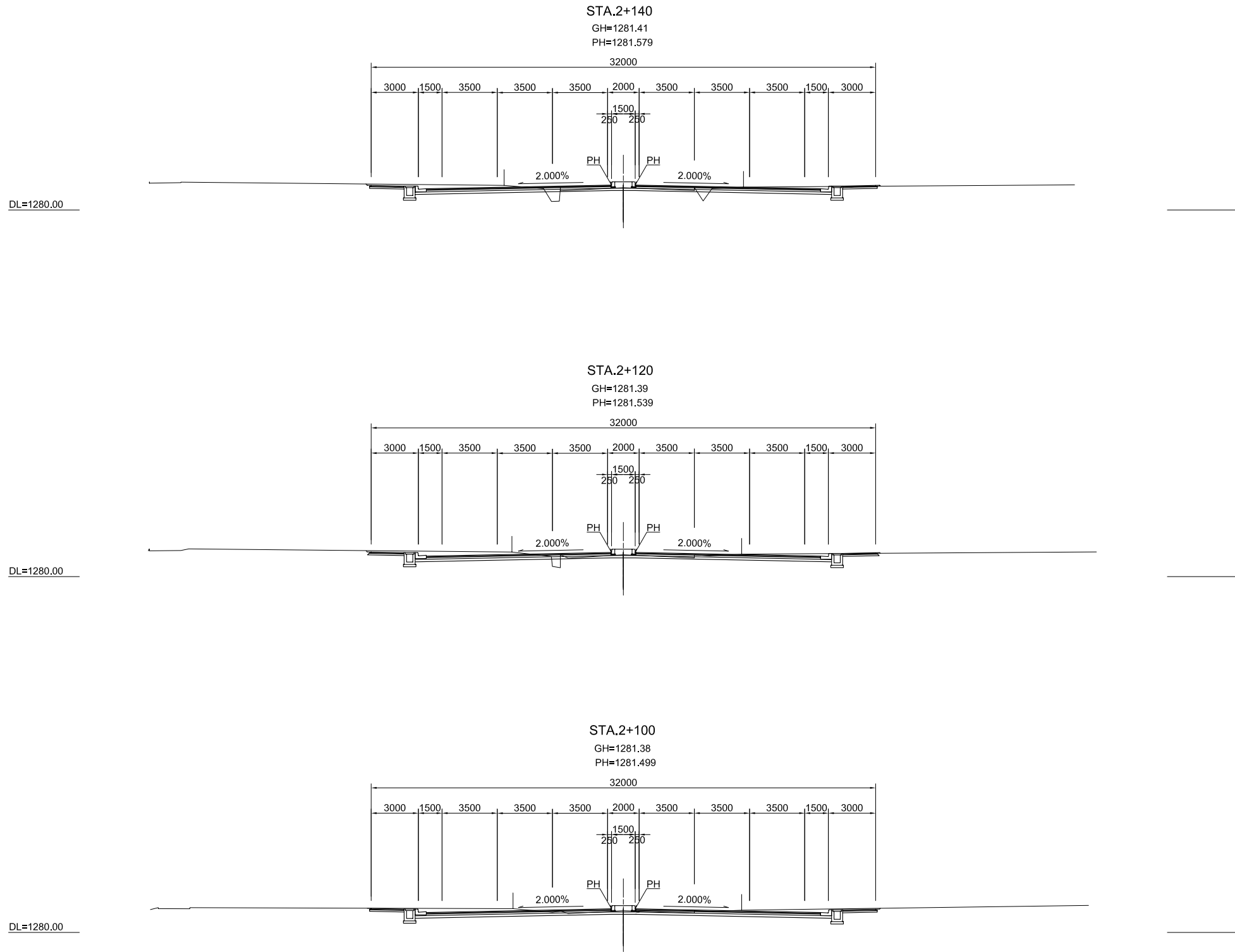
APPROVED BY :

DRAWING TITLE :  
CROSS SECTION 32/35

SCALE:  
1:300

DRAWING No.  
112

HIGHWAY



PROJECT TITLE :  
THE PROJECT FOR CONSTRUCTION OF  
AJILCHIN FLY-OVER IN ULAANBAATAR CITY

DESIGNED BY ;  
CTI Engineering International Co., Ltd.  
Chodai Co., Ltd.  
International Development Institute

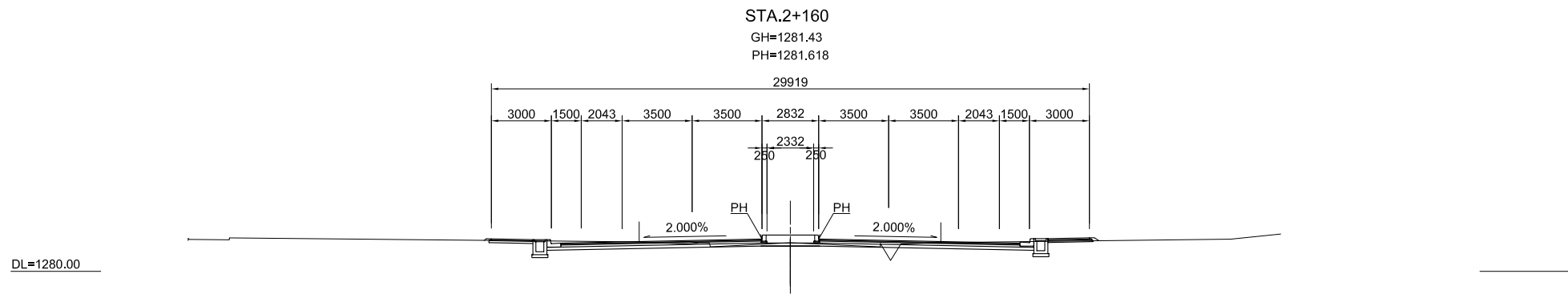
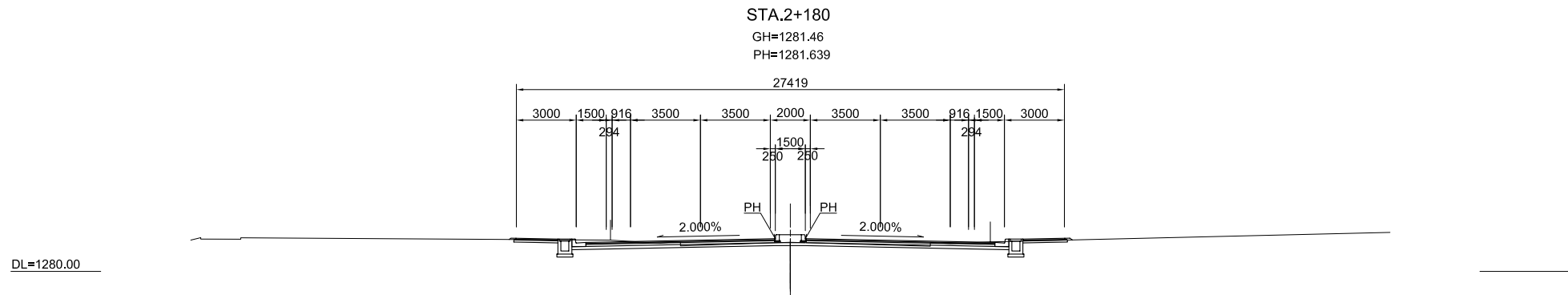
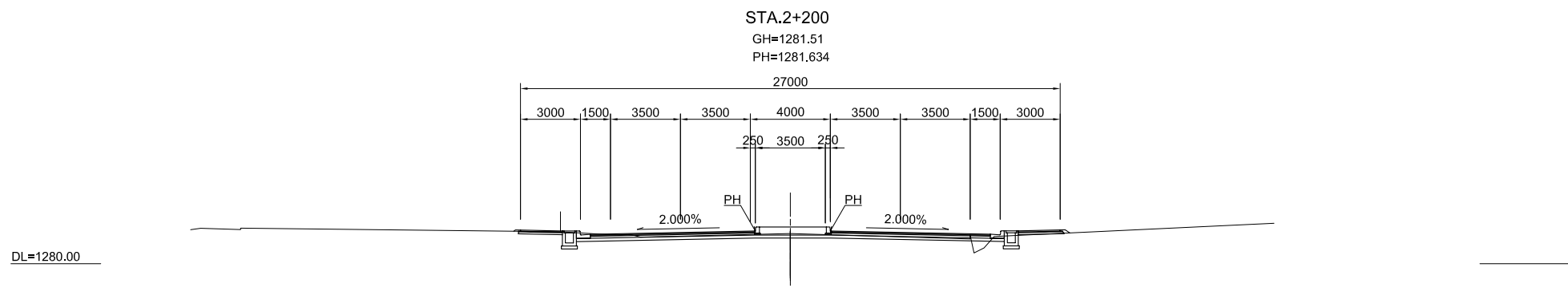
APPROVED BY :

DRAWING TITLE :  
CROSS SECTION 33/35

SCALE:  
1:300

DRAWING No.  
113

HIGHWAY



PROJECT TITLE :  
THE PROJECT FOR CONSTRUCTION OF  
AJILCHIN FLY-OVER IN ULAANBAATAR CITY

DESIGNED BY ;  
CTI Engineering International Co., Ltd.  
Chodai Co., Ltd.  
International Development Institute

APPROVED BY :

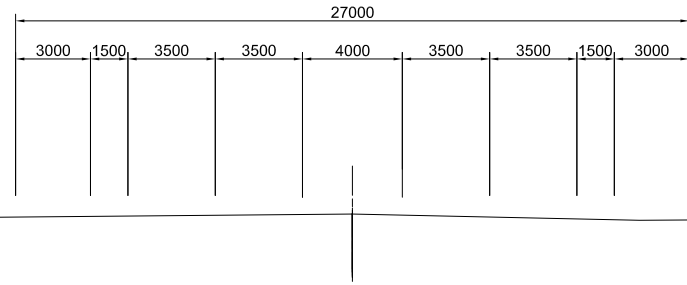
DRAWING TITLE :  
CROSS SECTION 34/35

SCALE:  
1:300

DRAWING No.  
114

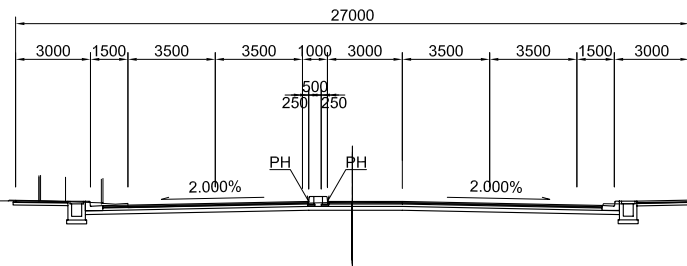
HIGHWAY

STA.2+260  
 GH=1281.57  
 PH=1281.563



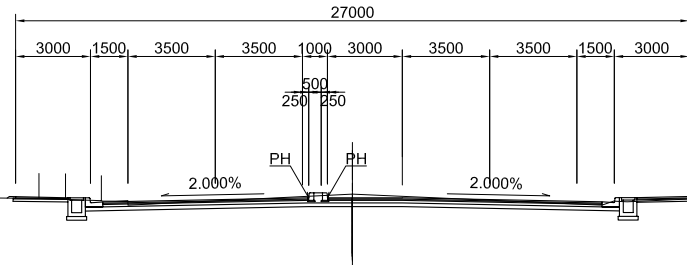
DL=1280.00

STA.2+240  
 GH=1281.57  
 PH=1281.587



DL=1280.00

STA.2+220  
 GH=1281.76  
 PH=1281.611



DL=1280.00

PROJECT TITLE :  
 THE PROJECT FOR CONSTRUCTION OF  
 AJILCHIN FLY-OVER IN ULAANBAATAR CITY

DESIGNED BY ;  
 CTI Engineering International Co., Ltd.  
 Chodai Co., Ltd.  
 International Development Institute

APPROVED BY :

DRAWING TITLE :  
 CROSS SECTION 35/35

SCALE:  
 1:300

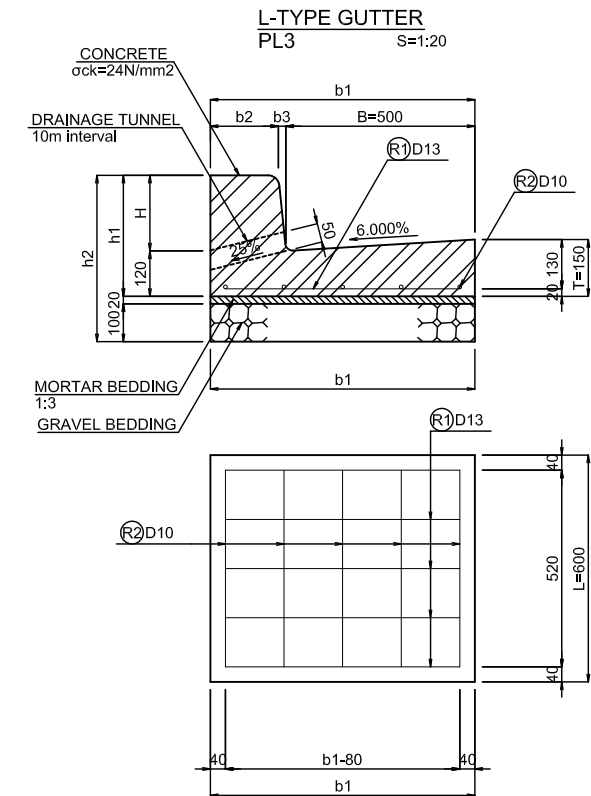
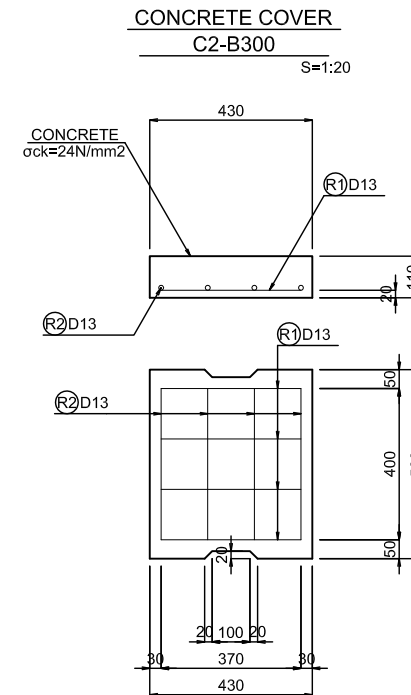
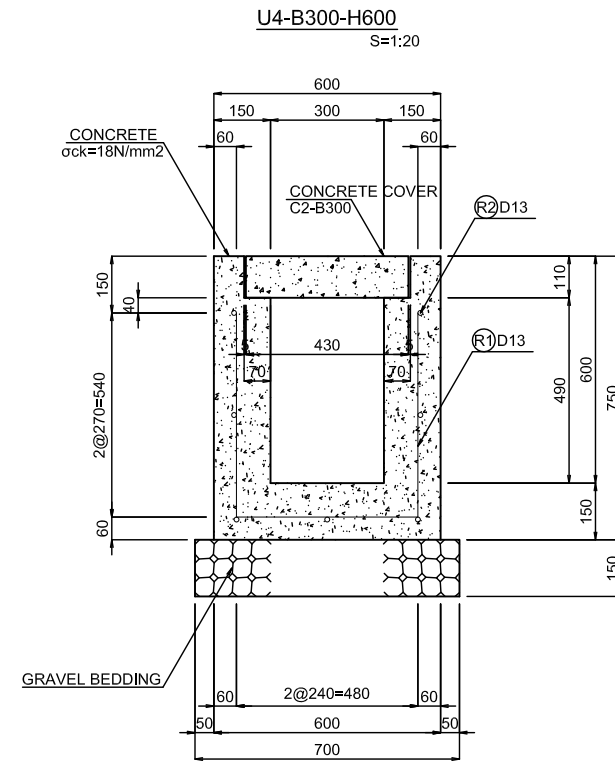
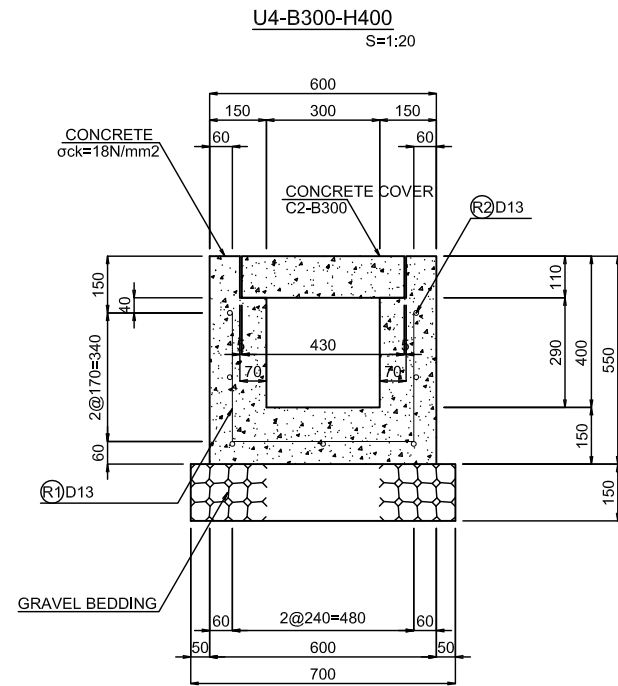
DRAWING No.  
 115

HIGHWAY



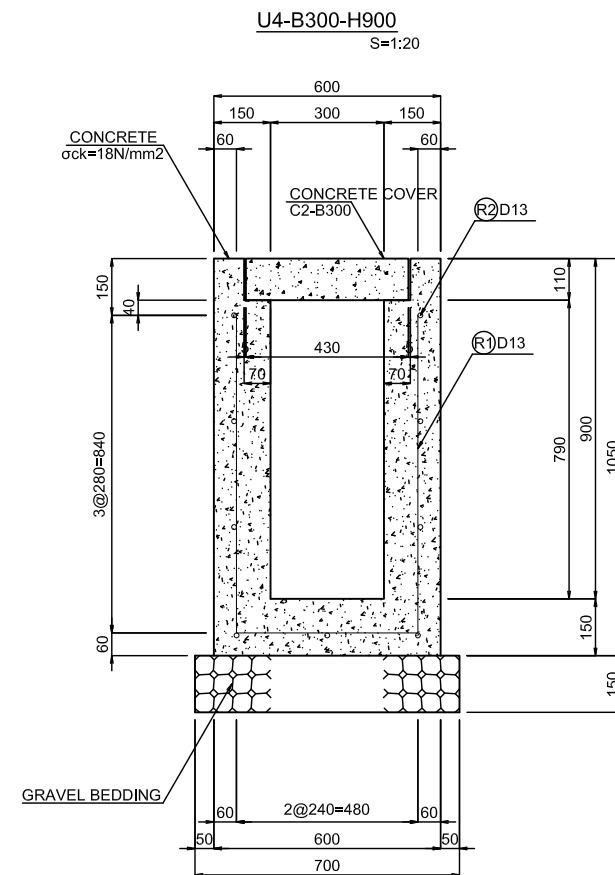
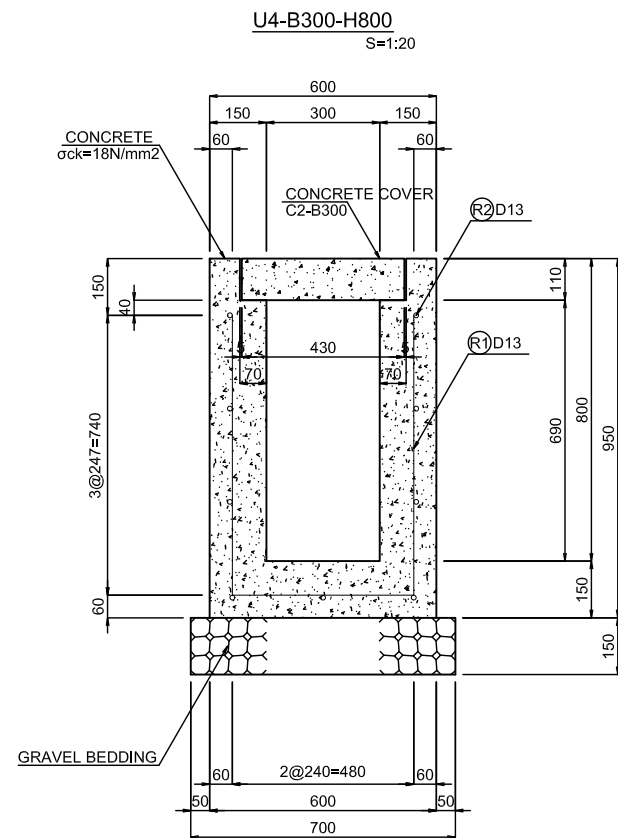
# DETAIL OF DRAINAGE(1/2)

## U-TYPE DITCH GUTTER

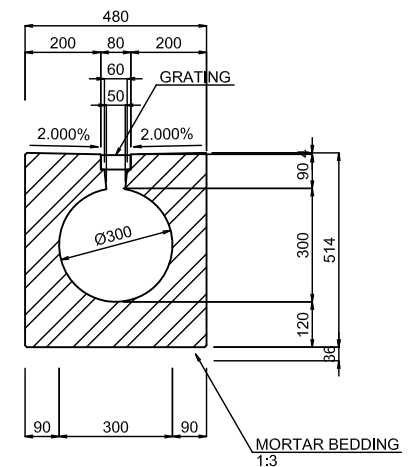


DIMENSION TABLE

MARK	B	H	b1	b2	b3	h1	h2	L
PL3-B500-H150	500	150	665	150	15	270	390	600
PL3-B500-H200	500	200	700	180	20	320	440	600



## O-TYPE GUTTER Ø300 S=1:20



PROJECT TITLE :  
THE PROJECT FOR CONSTRUCTION OF  
AJILCHIN FLY-OVER IN ULAANBAATAR CITY

DESIGNED BY ;  
CTI Engineering International Co., Ltd.  
Chodai Co., Ltd.  
International Development Institute

APPROVED BY :

DRAWING TITLE :  
DETAIL OF DRAINAGE(1/2)

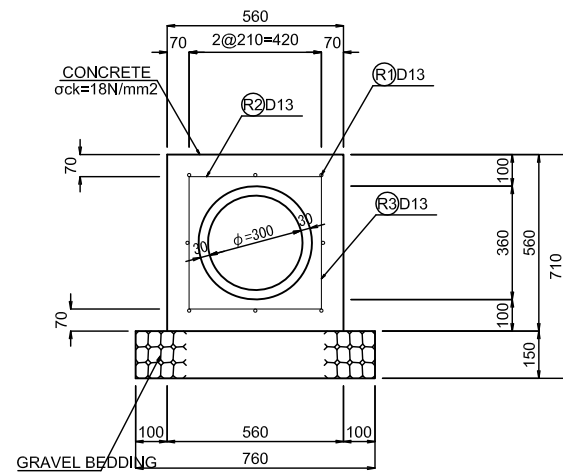
SCALE:

DRAWING No.  
116

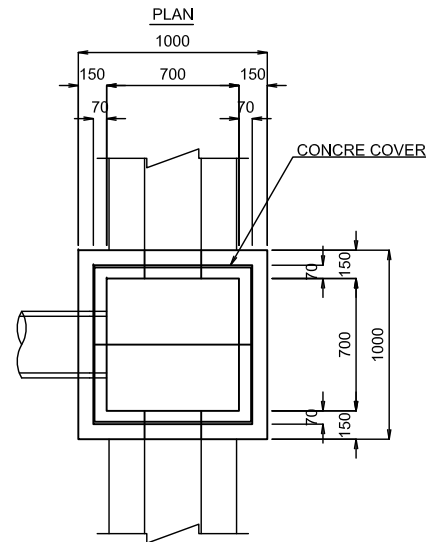
HIGHWAY

## DETAIL OF DRAINAGE (2/2)

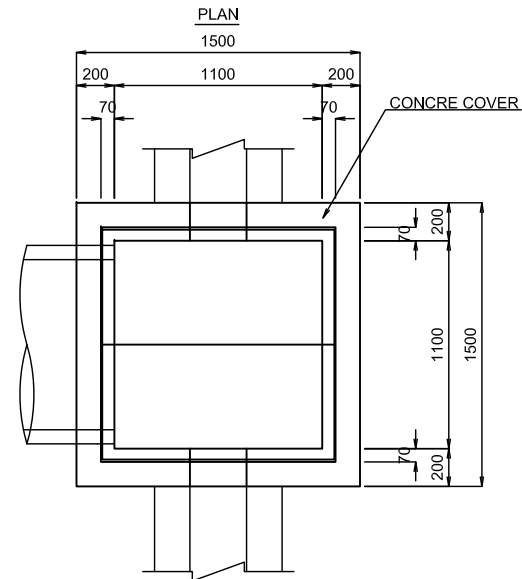
**PIPE CULVERT TYPE1**  
S=1:30



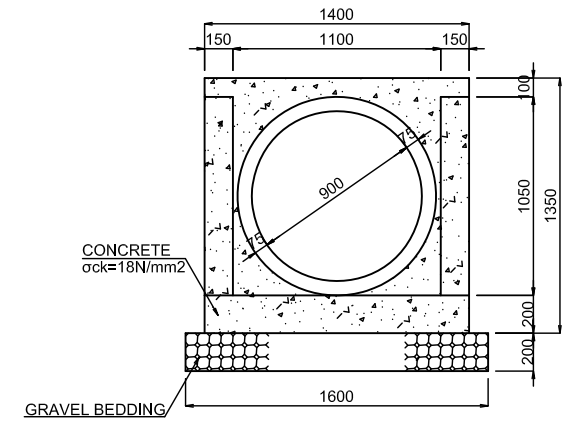
**CATCH BASIN TYPE1**  
S=1:50



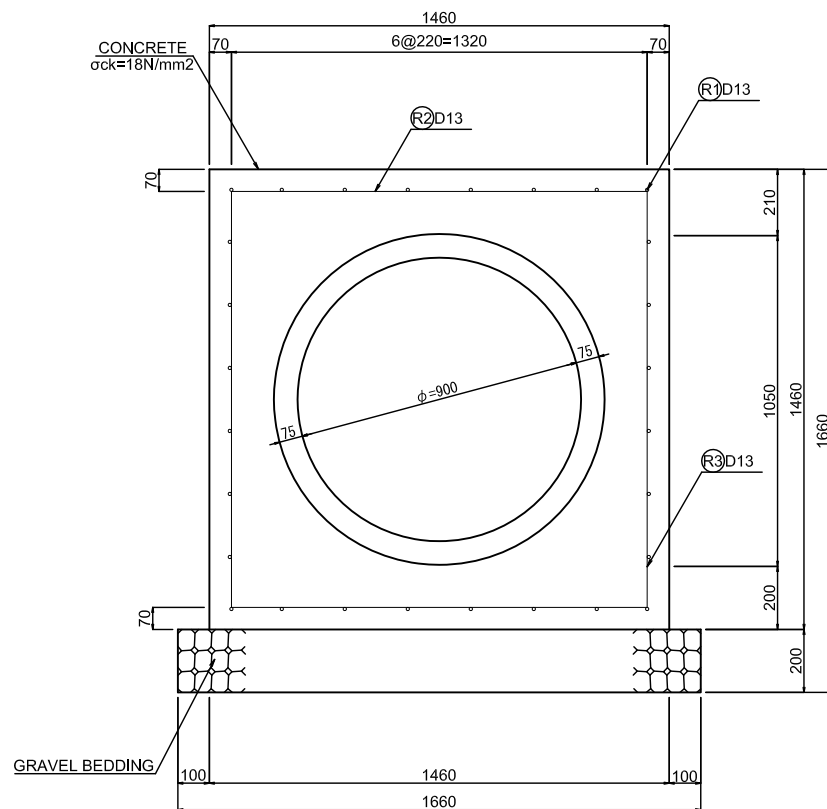
**CATCH BASIN TYPE2**  
S=1:50



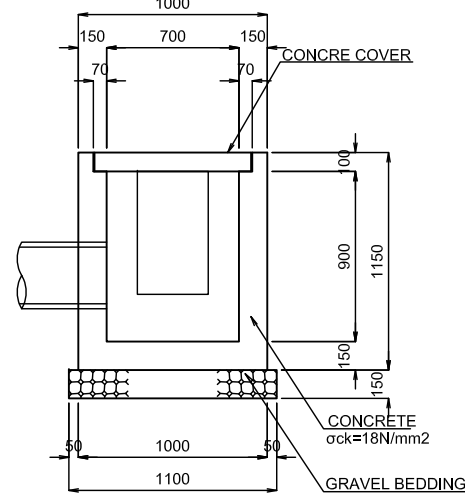
**OUTLET OF PIPE CULVERT TYPE-2**  
S=1:40



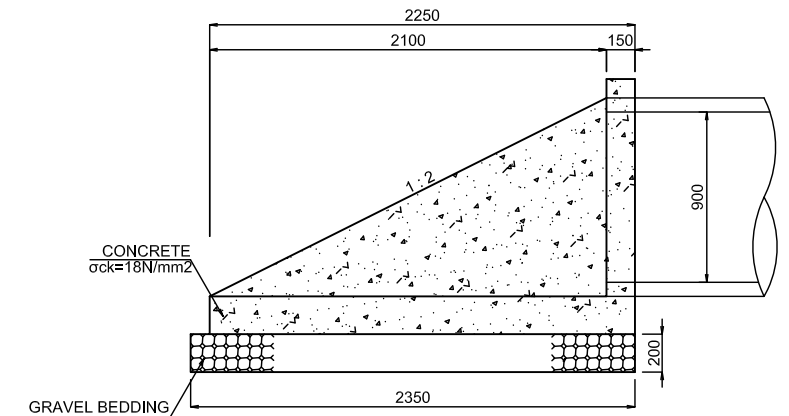
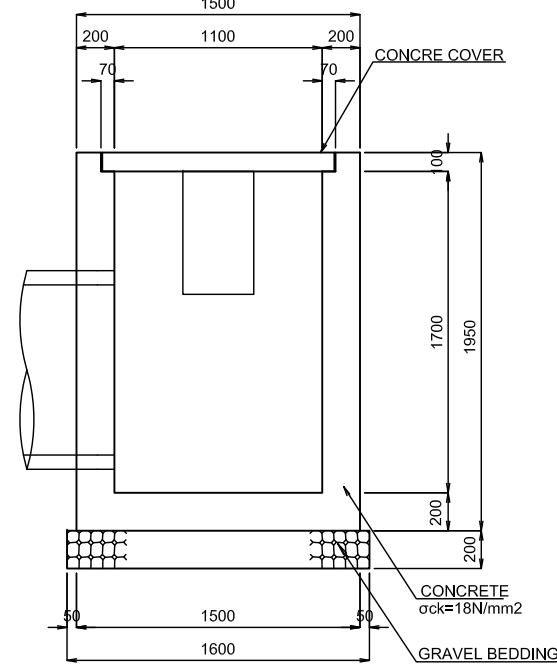
**PIPE CULVERT TYPE2**  
S=1:30



**SIDE ELEVATION**  
1000



**SIDE ELEVATION**  
1500



PROJECT TITLE :  
THE PROJECT FOR CONSTRUCTION OF  
AJILCHIN FLY-OVER IN ULAANBAATAR CITY

DESIGNED BY ;  
CTI Engineering International Co., Ltd.  
Chodai Co., Ltd.  
International Development Institute

APPROVED BY :

DRAWING TITLE :  
DETAIL OF DRAINAGE(2/2)

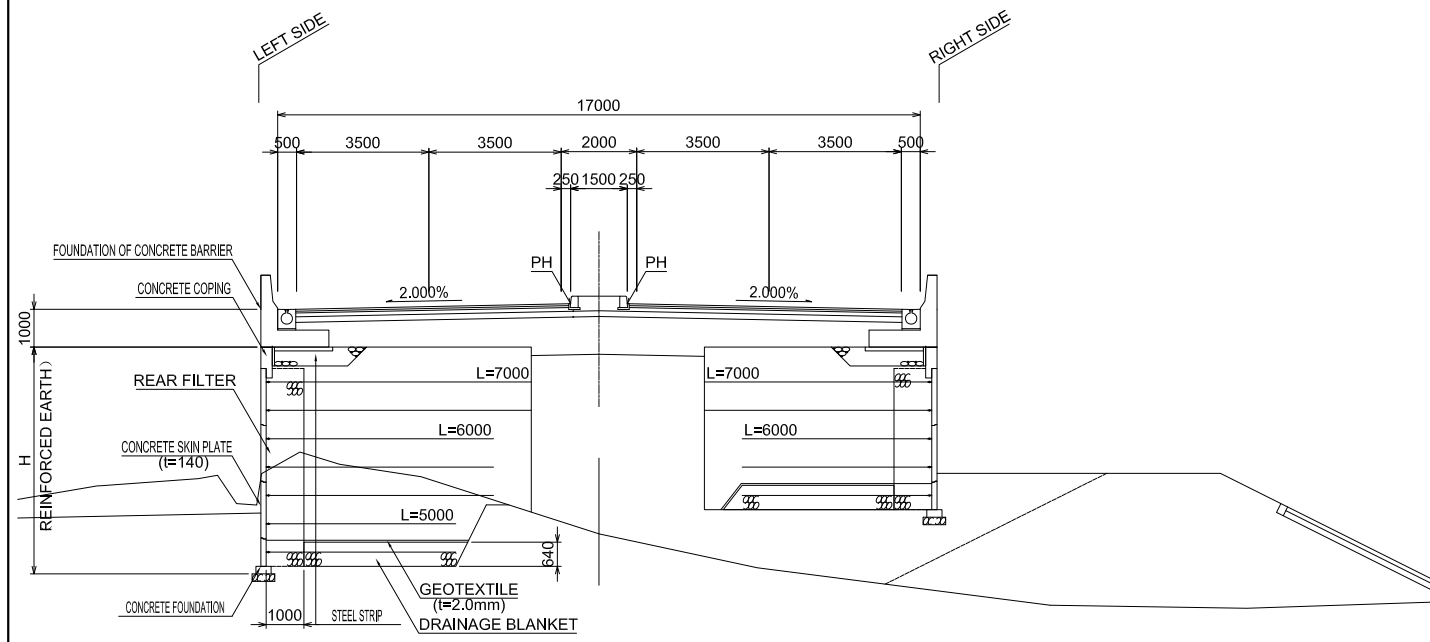
SCALE:

DRAWING No.  
117

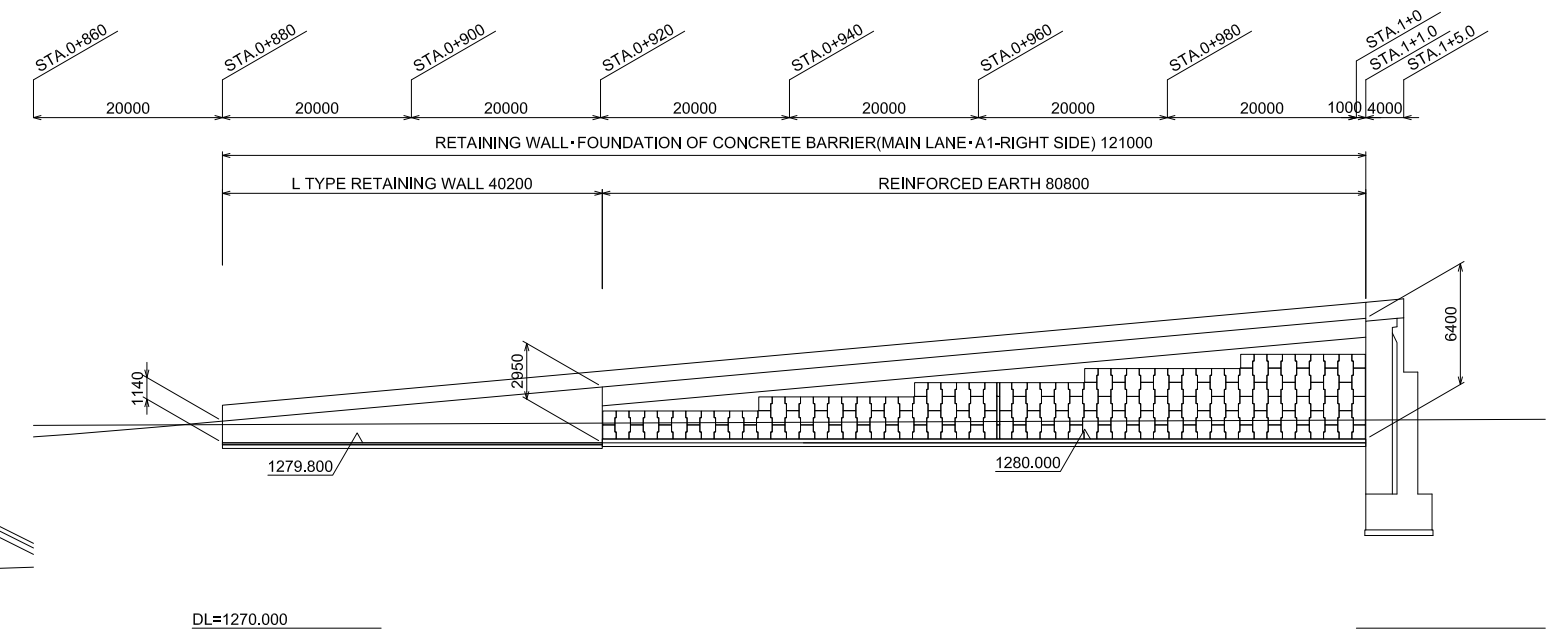
HIGHWAY

# DETAIL OF APPROACH ROAD AT A1 SIDE

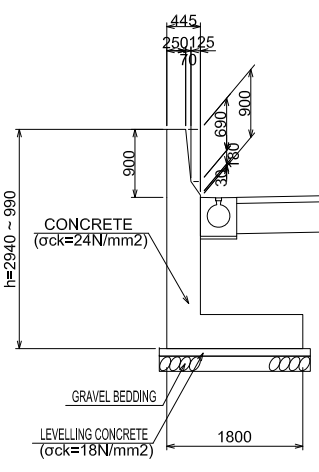
TYPICAL CROSS SECTION S=1:100



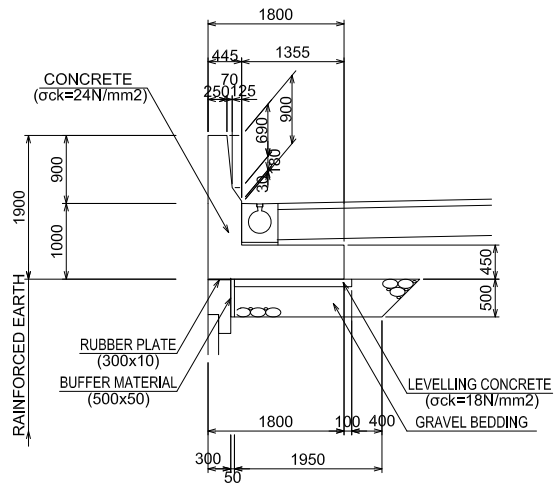
ARRANGEMENT OF CONCRETE SKIN PLATE RIGHT SIDE H=1:400 V=1:200



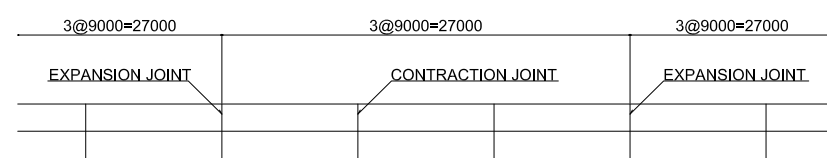
CROSS SECTION OF L TYPE RETAINING WALL S=1:50



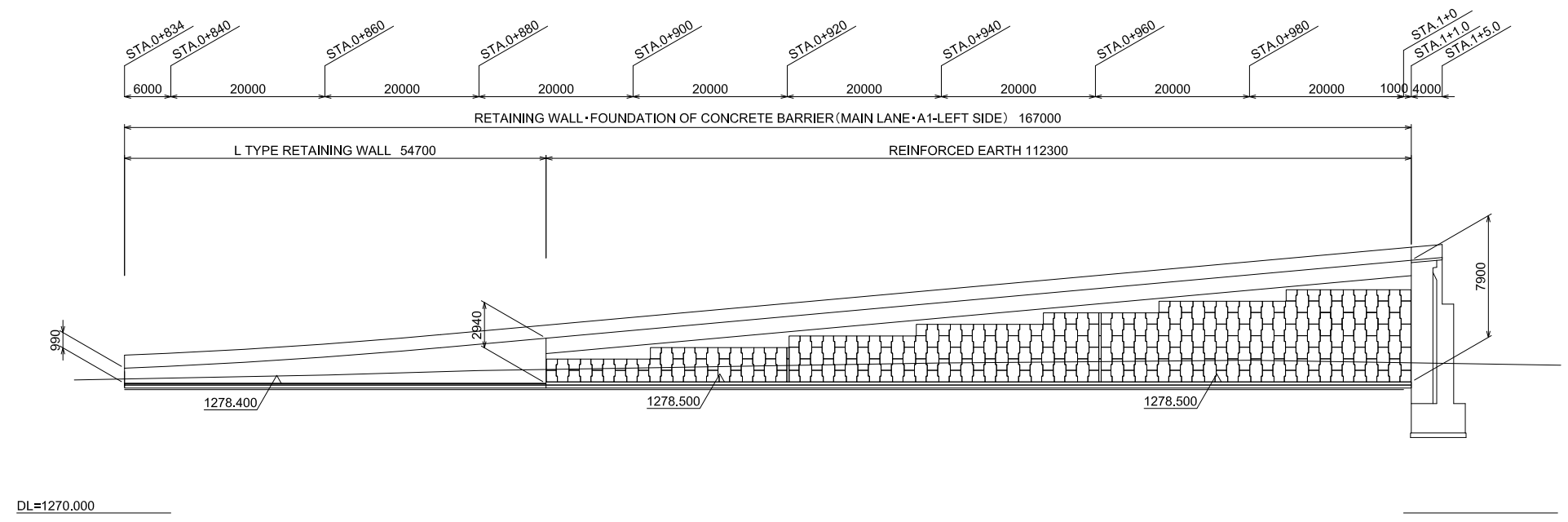
CROSS SECTION OF FOUNDATION OF CONCRETE BARRIER S=1:50



JOINT ARRANGEMENT OF CONCRETE BARRIER



LEFT SIDE



PROJECT TITLE :  
THE PROJECT FOR CONSTRUCTION OF  
AJILCHIN FLY-OVER IN ULAANBAATAR CITY

DESIGNED BY :  
**CTI Engineering International Co., Ltd.**  
Chodai Co., Ltd.  
International Development Institute

APPROVED BY :

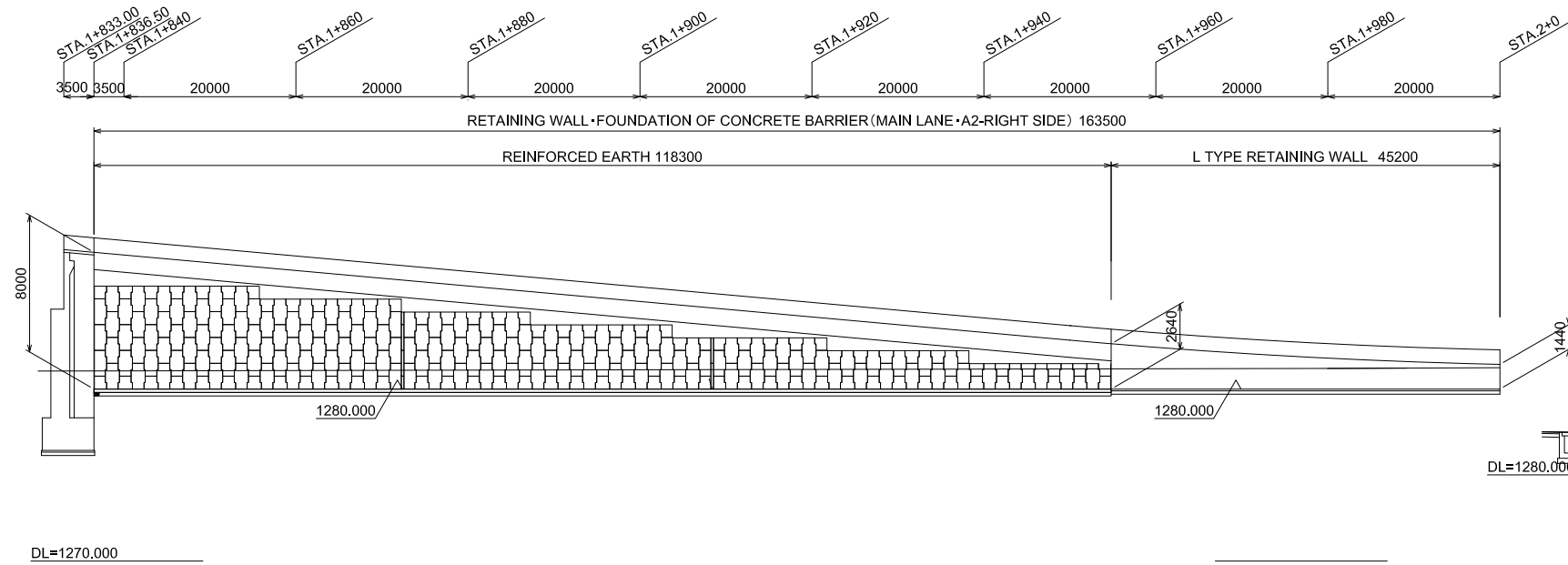
DRAWING TITLE :  
DETAIL OF APPROACH ROAD AT A1 SIDE

SCALE:

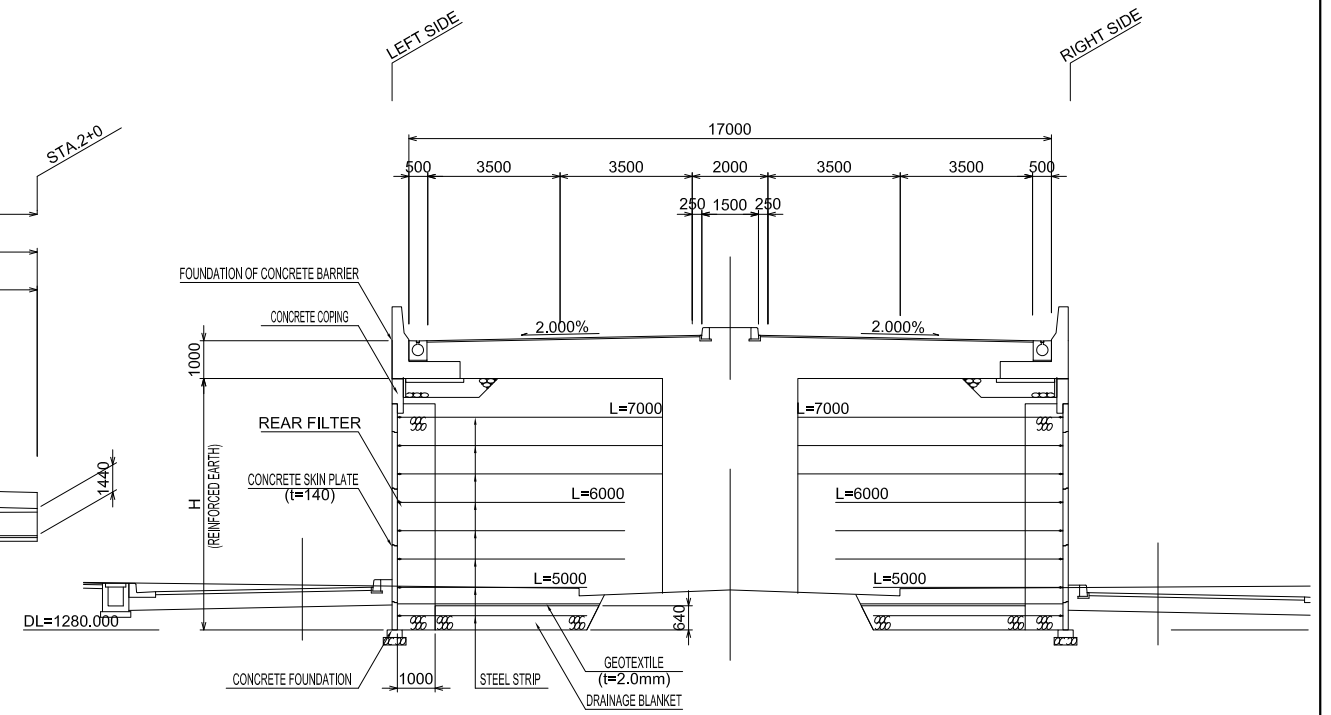
DRAWING No.  
118  
HIGHWAY

# DETAIL OF APPROACH ROAD AT A2 SIDE

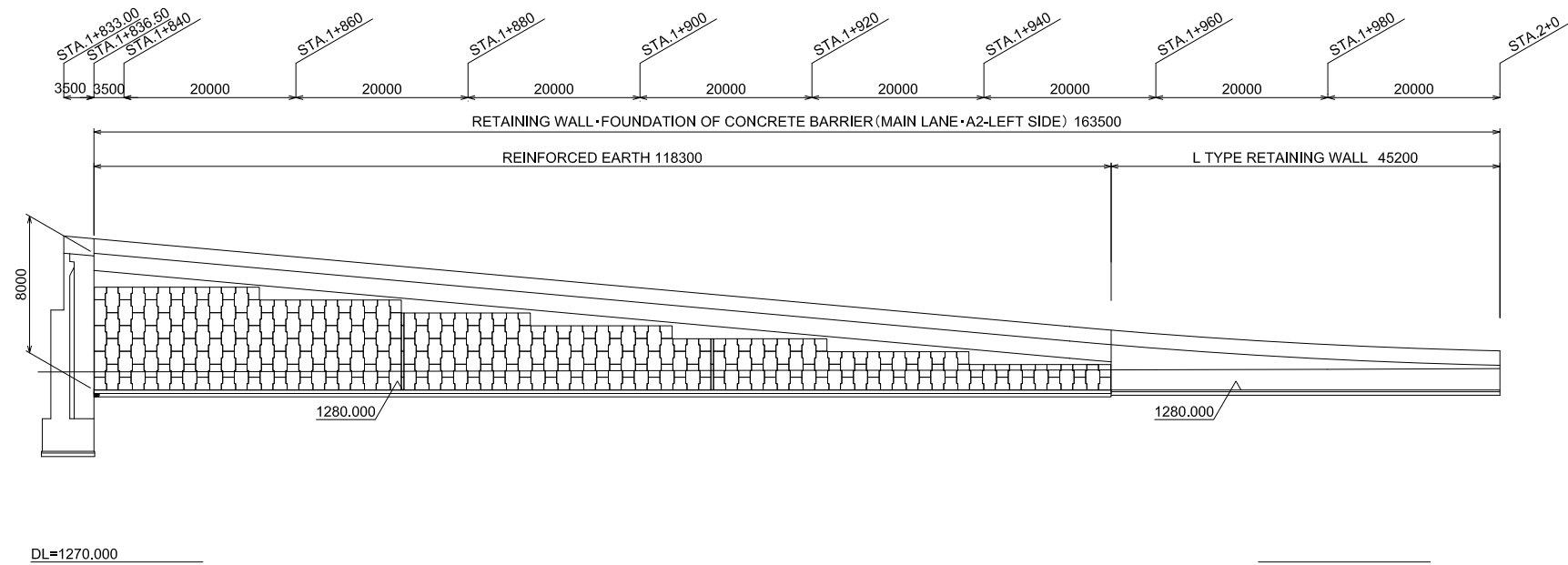
ARRANGEMENT OF CONCRETE SKIN PLATE RIGHT SIDE H=1:400 V=1:200



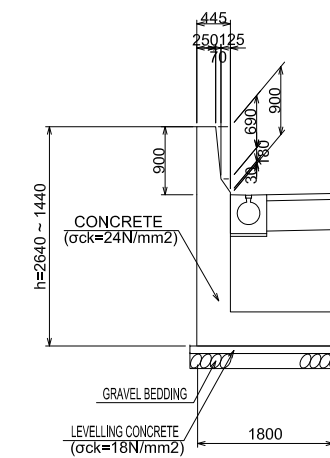
TYPICAL CROSS SECTION S=1:100



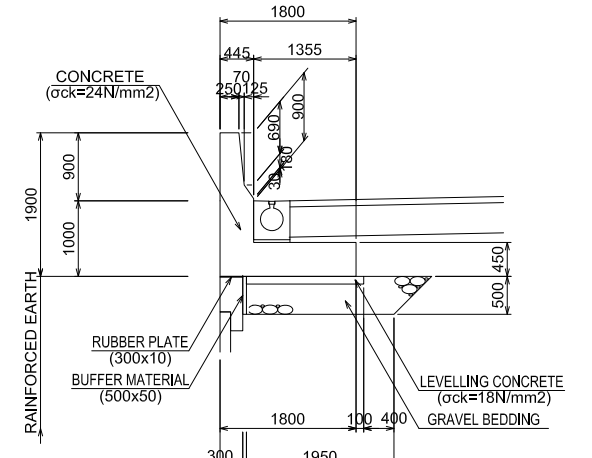
LEFT SIDE



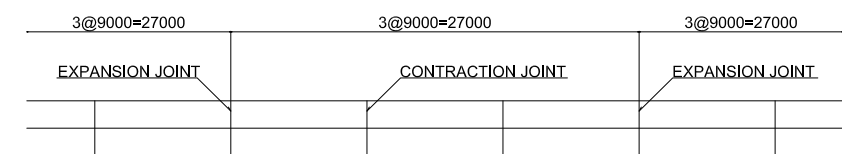
CROSS SECTION OF L TYPE RETAINING WALL S=1:50



CROSS SECTION OF FOUNDATION OF CONCRETE BARRIER S=1:50



JOINT ARRANGEMENT OF CONCRETE BARRIER



PROJECT TITLE :  
THE PROJECT FOR CONSTRUCTION OF  
AJILCHIN FLY-OVER IN ULAANBAATAR CITY

DESIGNED BY ;  
**CTI Engineering International Co., Ltd.**  
**Chodai Co., Ltd.**  
International Development Institute

APPROVED BY :

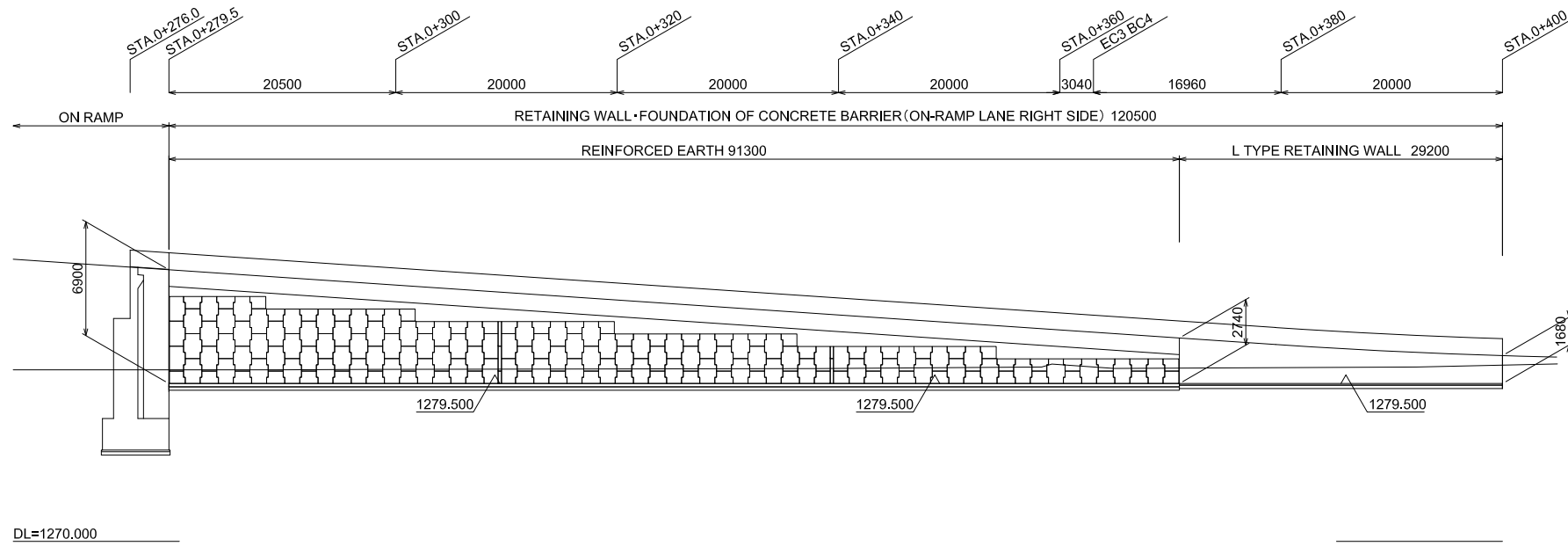
DRAWING TITLE :  
DETAIL OF APPROACH ROAD AT A2 SIDE

SCALE:

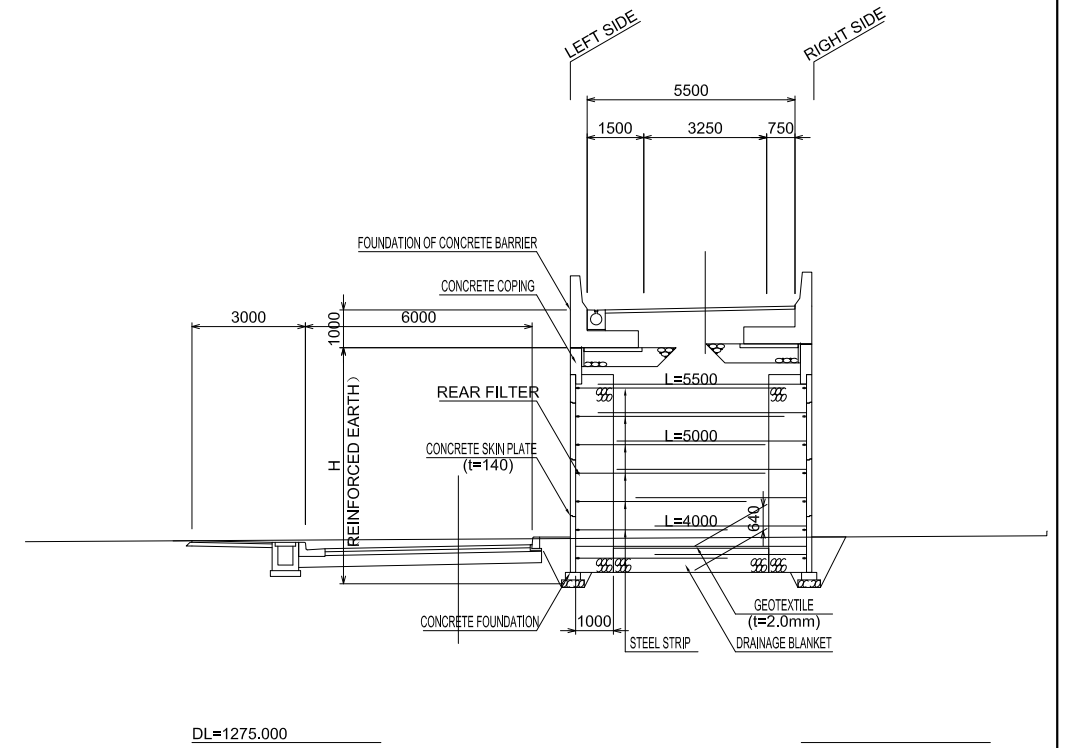
DRAWING No.  
119  
HIGHWAY

# DETAIL OF APPROACH ROAD AT ON RAMP

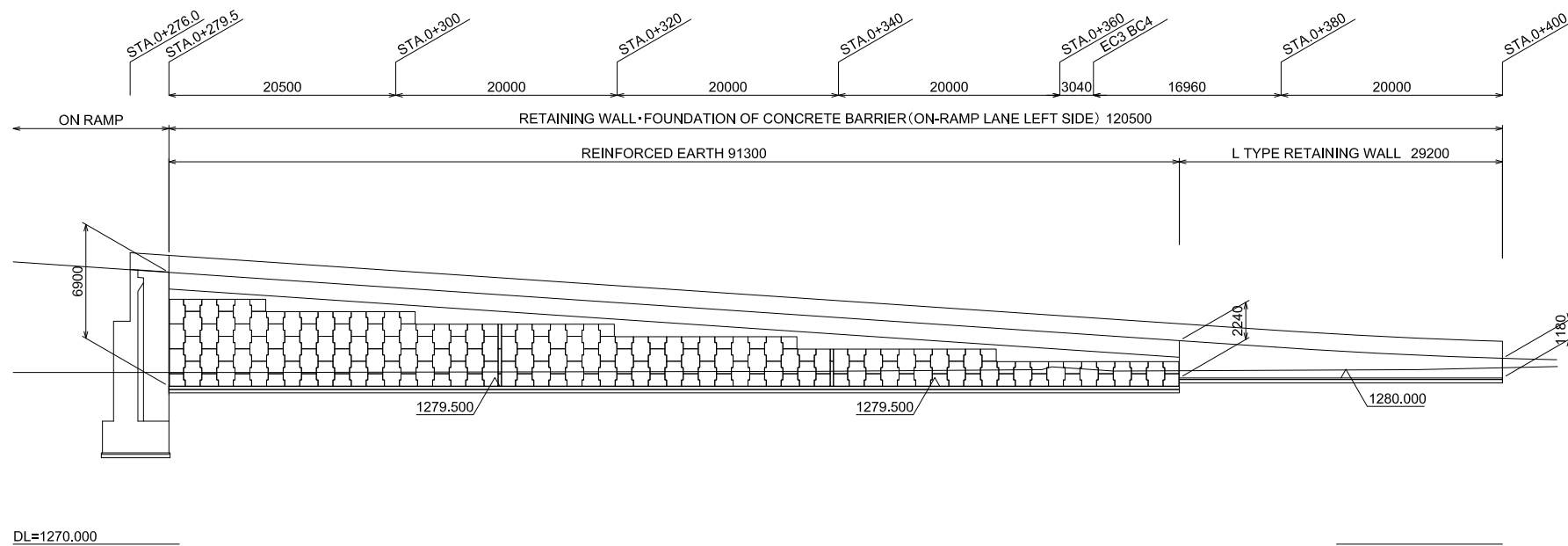
ARRANGEMENT OF CONCRETE SKIN PLATE RIGHT SIDE H=1:300 V=1:200



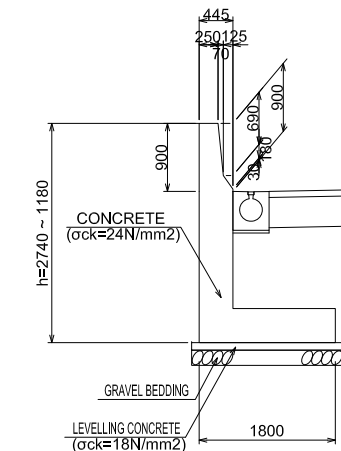
TYPICAL CROSS SECTION S=1:100



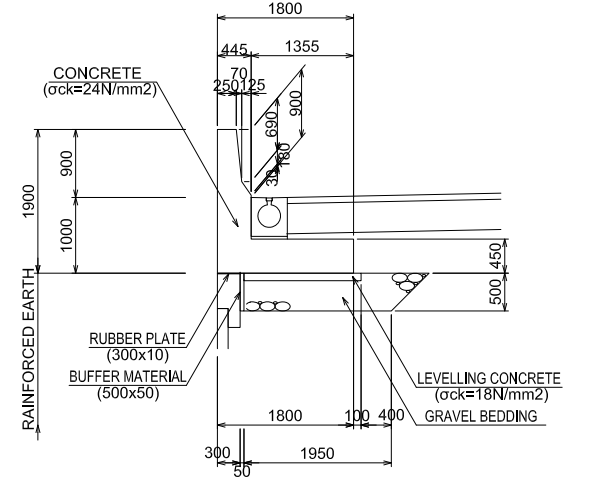
LEFT SIDE



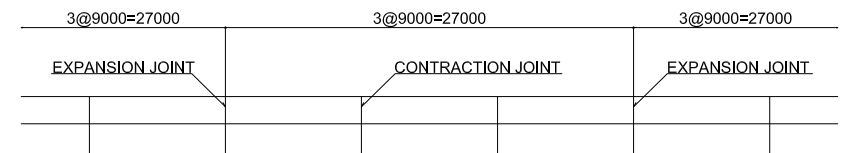
CROSS SECTION OF L TYPE RETAINING WALL S=1:50



CROSS SECTION OF FOUNDATION OF CONCRETE BARRIER S=1:50



JOINT ARRANGEMENT OF CONCRETE BARRIER



PROJECT TITLE :  
THE PROJECT FOR CONSTRUCTION OF  
AJILCHIN FLY-OVER IN ULAANBAATAR CITY

DESIGNED BY ;  
**CTI Engineering International Co., Ltd.**  
**Chodai Co., Ltd.**  
International Development Institute

APPROVED BY :

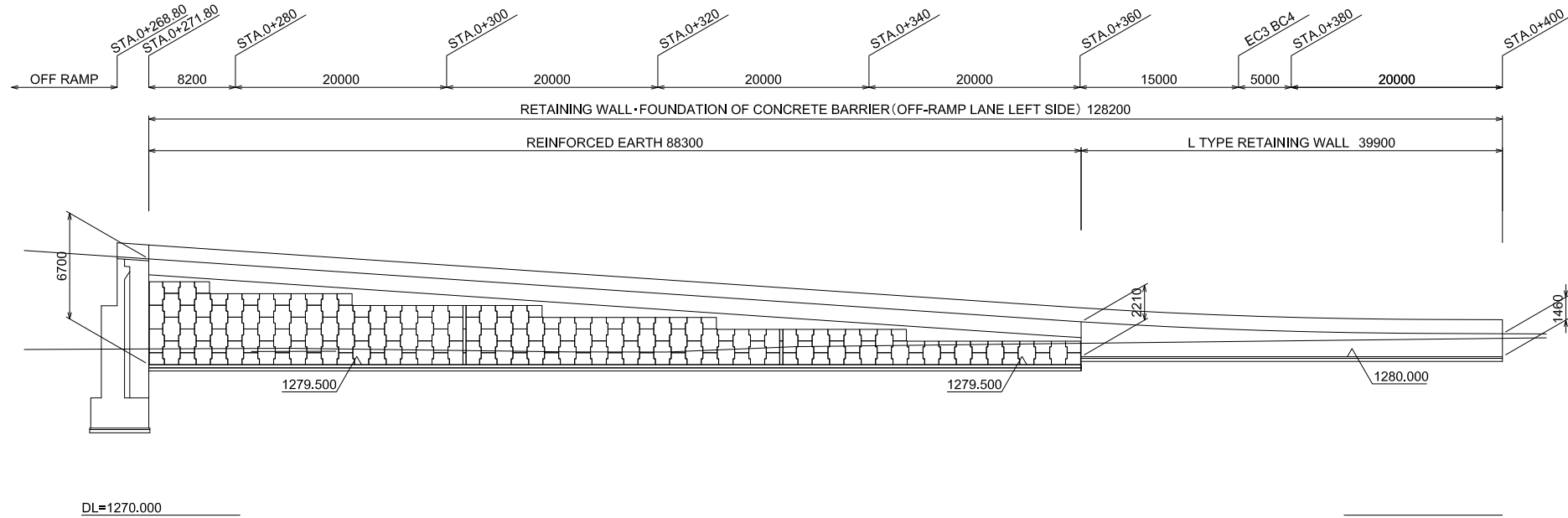
DRAWING TITLE :  
DETAIL OF APPROACH ROAD AT ON RAMP

SCALE:

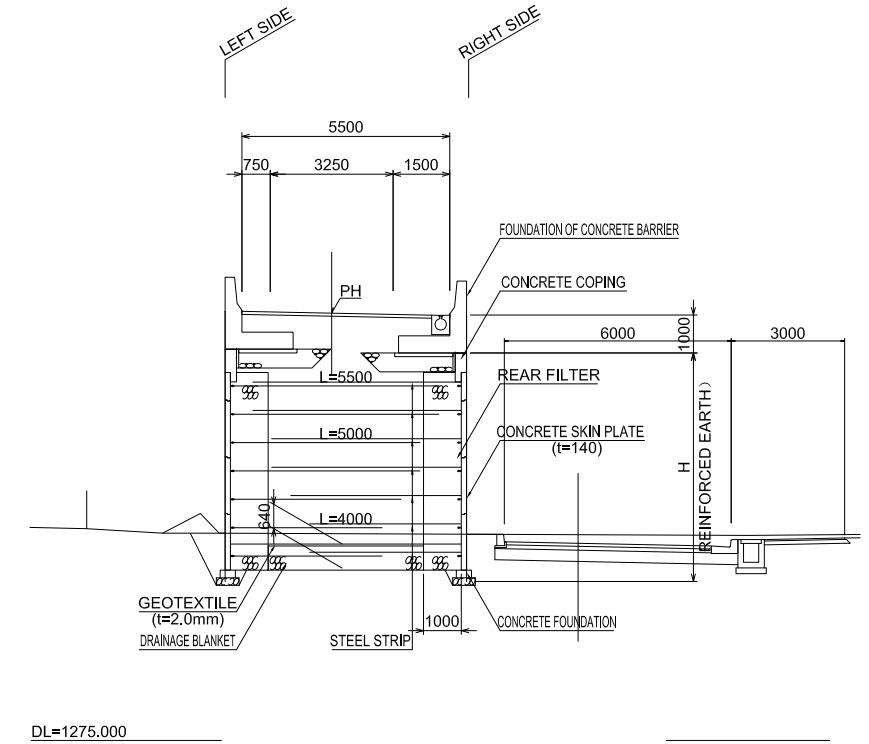
DRAWING No.  
120  
HIGHWAY

# DETAIL OF APPROACH ROAD AT OFF RAMP

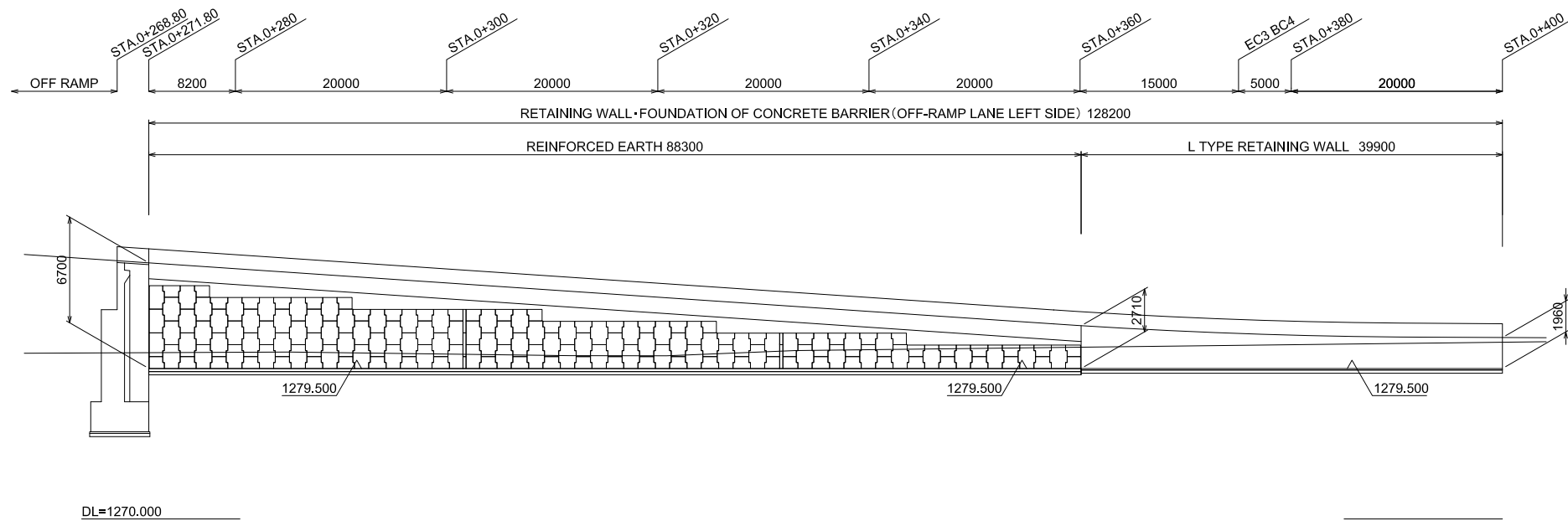
ARRANGEMENT OF CONCRETE SKIN PLATE RIGHT SIDE H=1:300 V=1:200



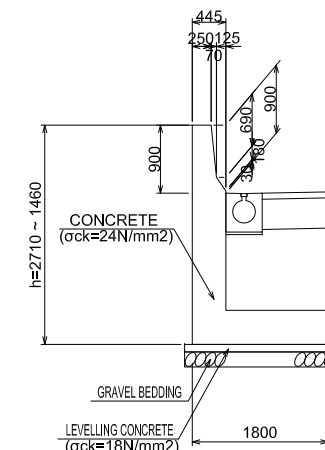
TYPICAL CROSS SECTION S=1:100



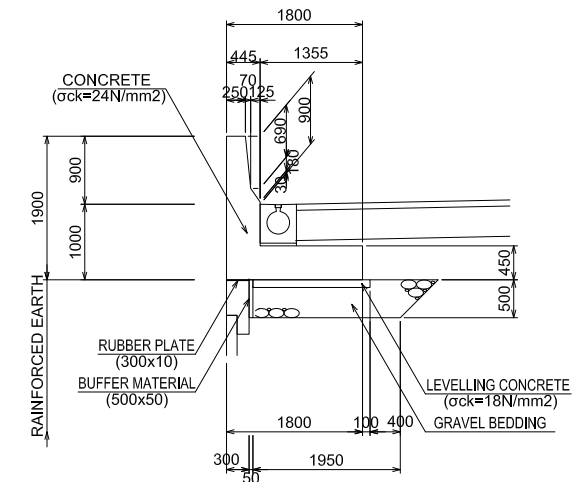
LEFT SIDE



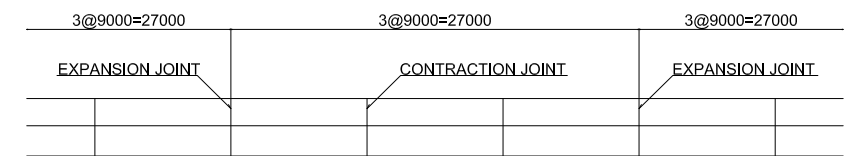
CROSS SECTION OF L TYPE RETAINING WALL S=1:50



CROSS SECTION OF FOUNDATION OF CONCRETE BARRIER S=1:50



JOINT ARRANGEMENT OF CONCRETE BARRIER



PROJECT TITLE :  
THE PROJECT FOR CONSTRUCTION OF  
AJILCHIN FLY-OVER IN ULAANBAATAR CITY

DESIGNED BY ;  
**CTI Engineering International Co., Ltd.**  
Chodai Co., Ltd.  
International Development Institute

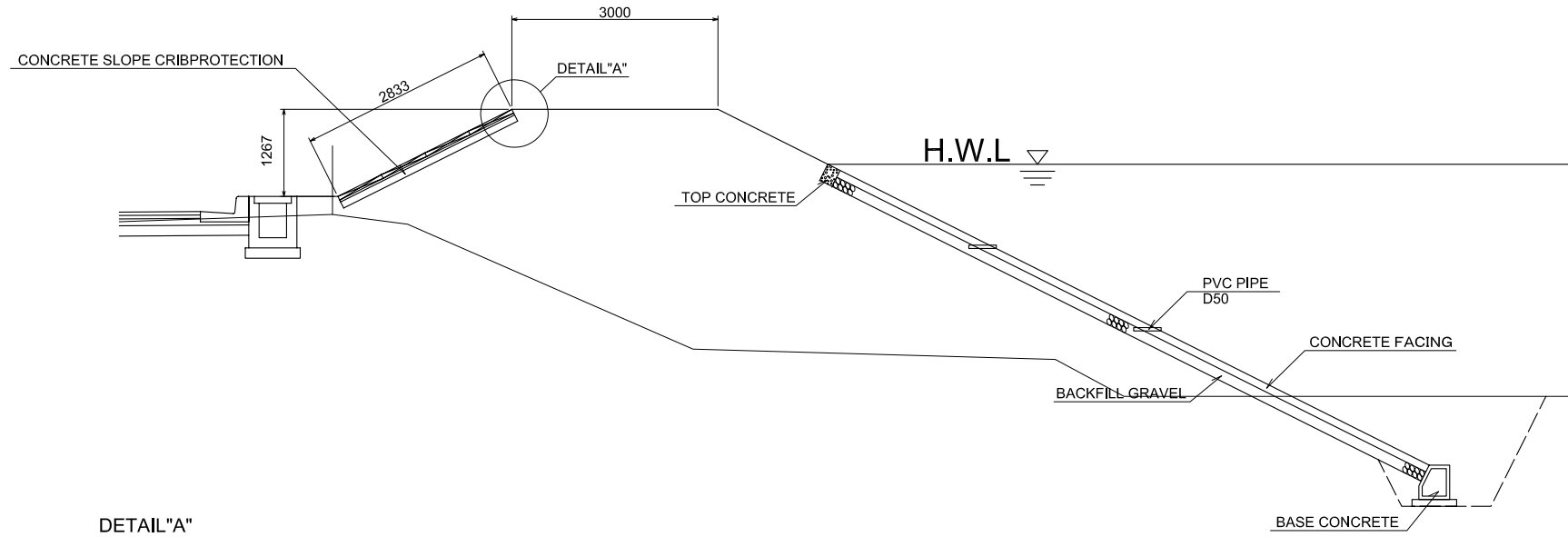
APPROVED BY :

DRAWING TITLE :  
DETAIL OF APPROACH ROAD AT OFF RAMP

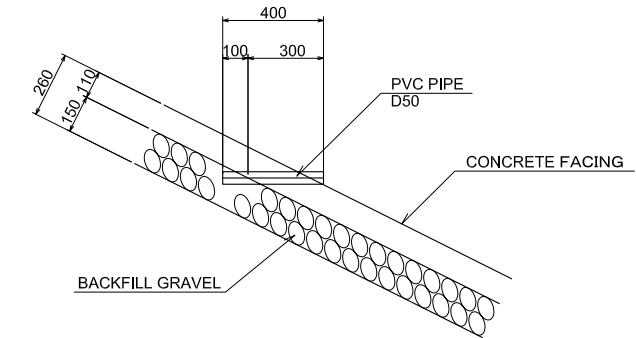
SCALE:

DRAWING No.  
121  
HIGHWAY

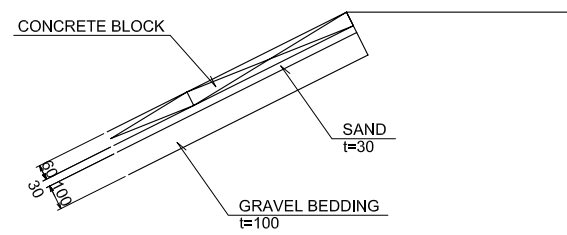
# DETAIL OF LEVEE REVETMENT



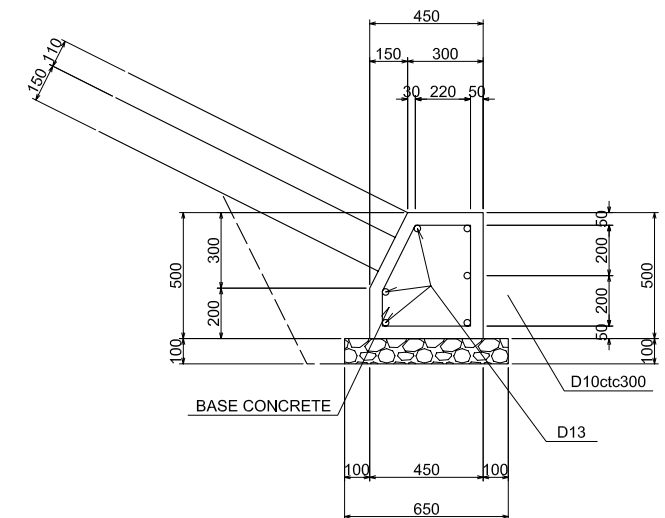
DETAIL OF PVC PIPE DRAIN  
S=1:30



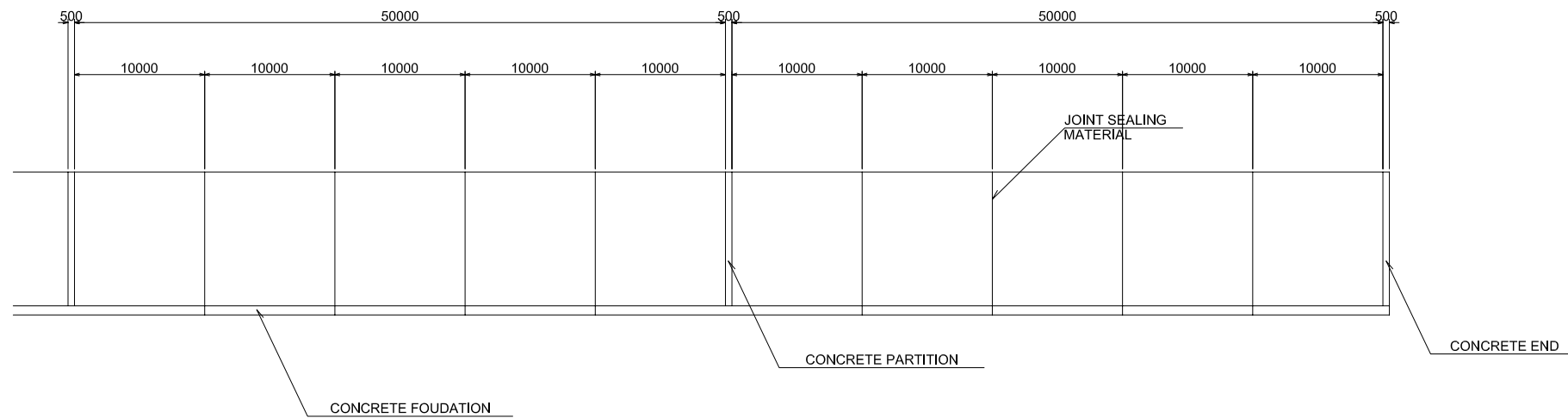
DETAIL "A"



CONCRETE FOUNDATION  
S=1:30



JOINT ARRANGEMENT



PROJECT TITLE ;  
THE PROJECT FOR CONSTRUCTION OF  
AJILCHIN FLY-OVER IN ULAANBAATAR CITY

DESIGNED BY ;  
CTI Engineering International Co., Ltd.  
Chodai Co., Ltd.  
International Development Institute

APPROVED BY ;

DRAWING TITLE ;  
DETAIL OF LEVEE REVETMENT

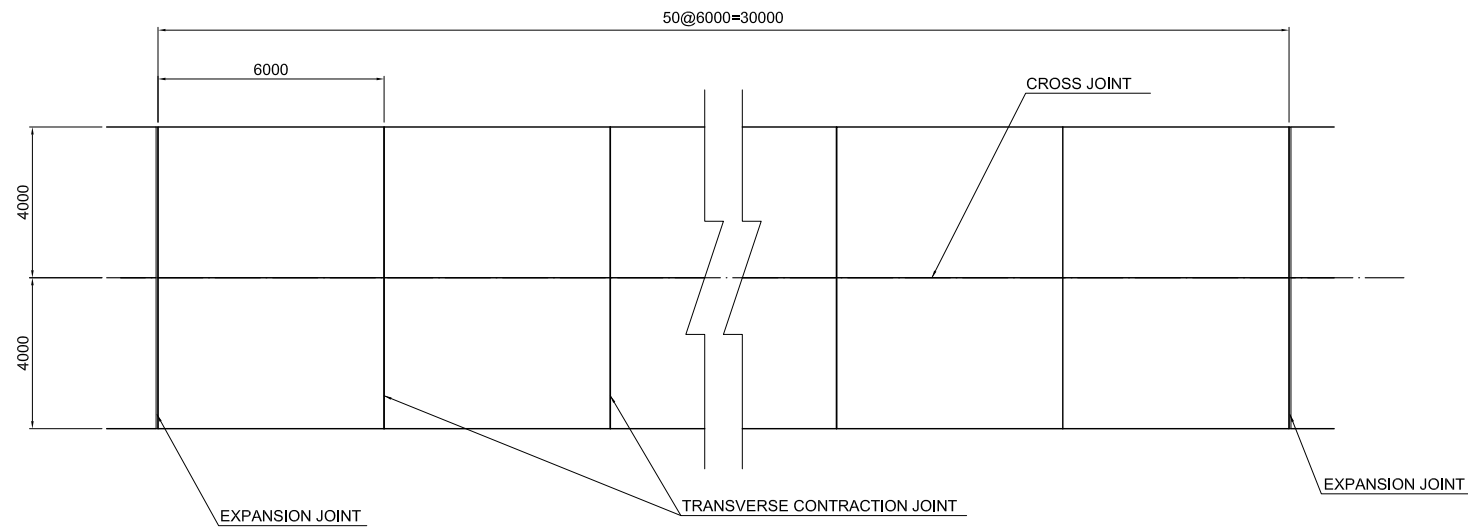
SCALE

DRAWING No.  
122

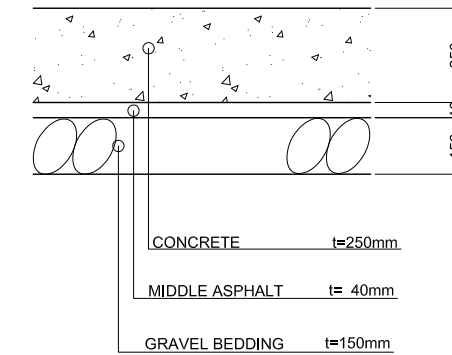
HIGHWAY

# PLAIN CONCRETE PAVEMENT

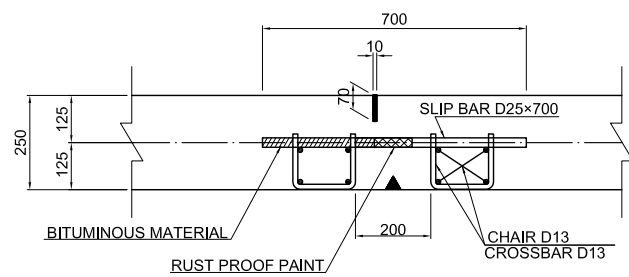
**JOINT ARRANGEMENT**  
S=1:20



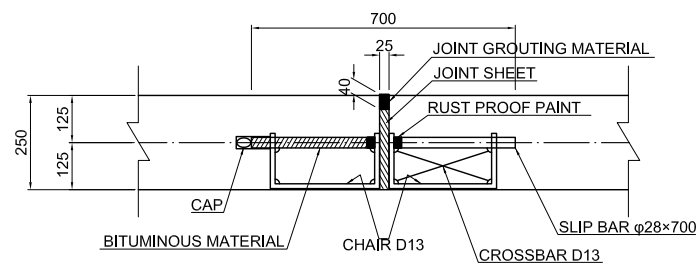
**PAVEMENT CONSTITUTION**  
S=1:20



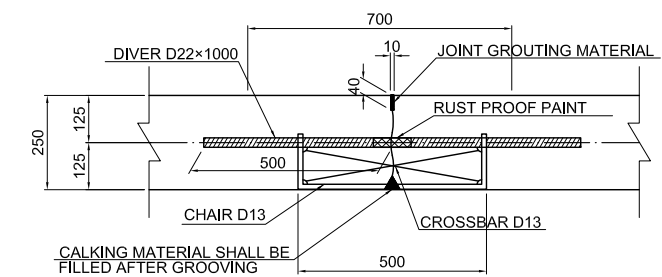
**DETAIL OF TRANSVERSE CONTRACTION JOINT**  
S=1:20



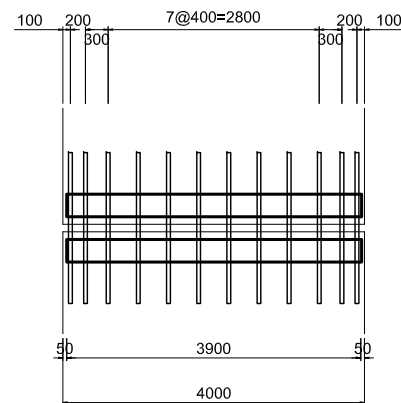
**DETAIL EXPANSION JOINT**  
S=1:20



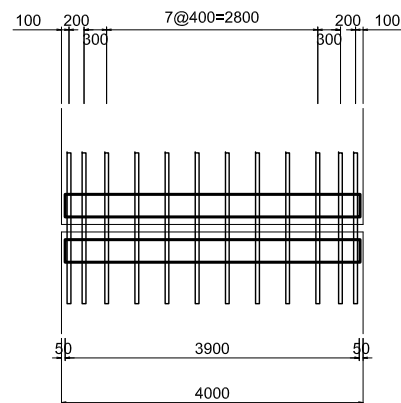
**DETAIL OF CROSS JOINT**  
S=1:20



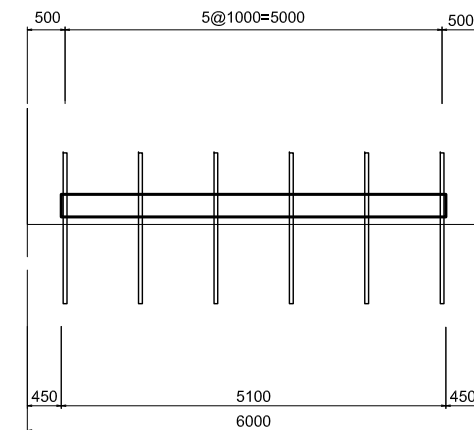
**BAR ARRANGEMENT**  
S=1:100



**BAR ARRANGEMENT**  
S=1:100



**BAR ARRANGEMENT**  
S=1:100



PROJECT TITLE :  
THE PROJECT FOR CONSTRUCTION OF  
AJILCHIN FLY-OVER IN ULAANBAATAR CITY

DESIGNED BY :  
CTI Engineering International Co., Ltd.  
Chodai Co., Ltd.  
International Development Institute

APPROVED BY :

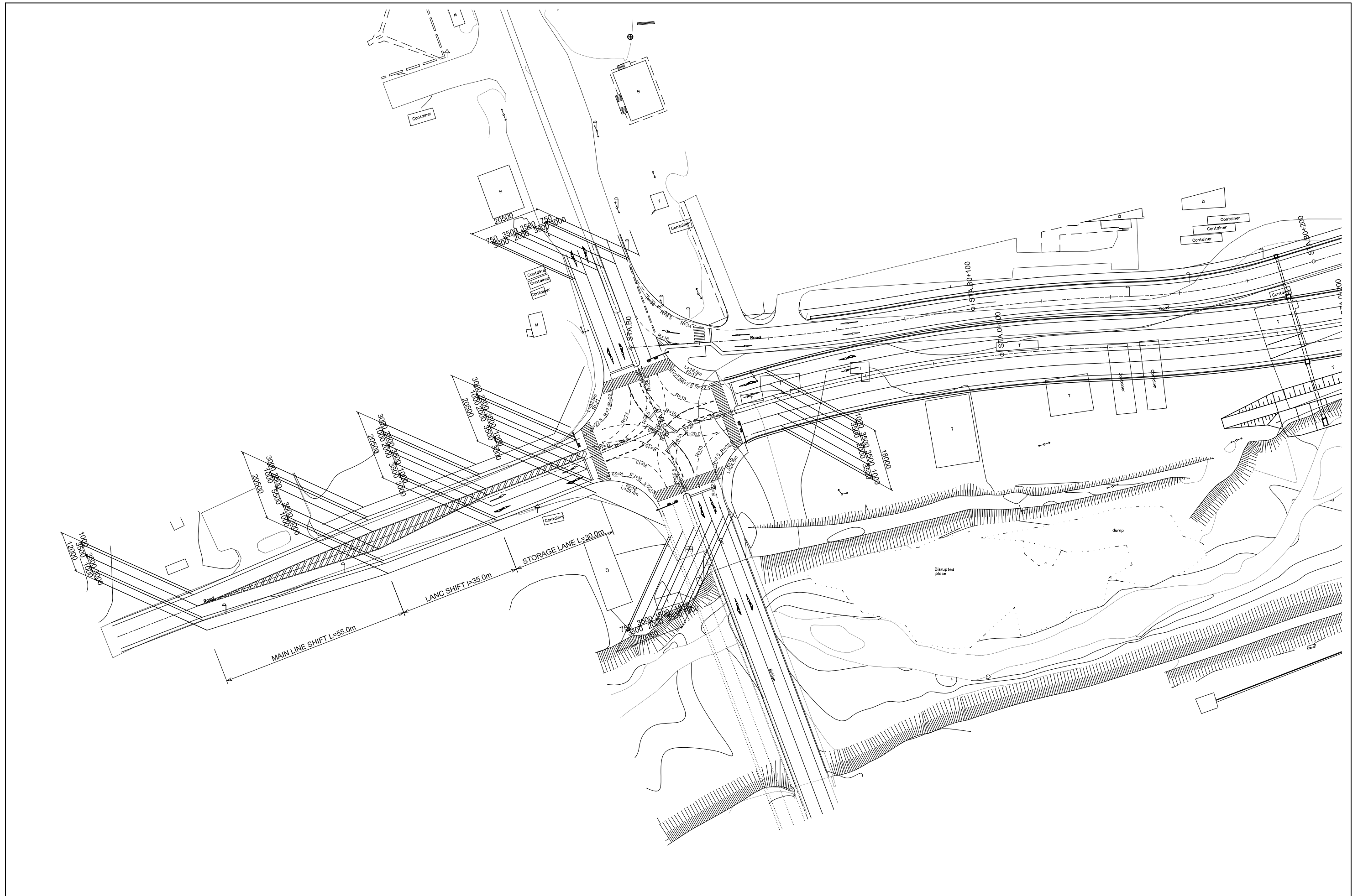
DRAWING TITLE :  
PLAIN CONCRETE PAVEMENT

SCALE:

DRAWING No.  
123

HIGHWAY



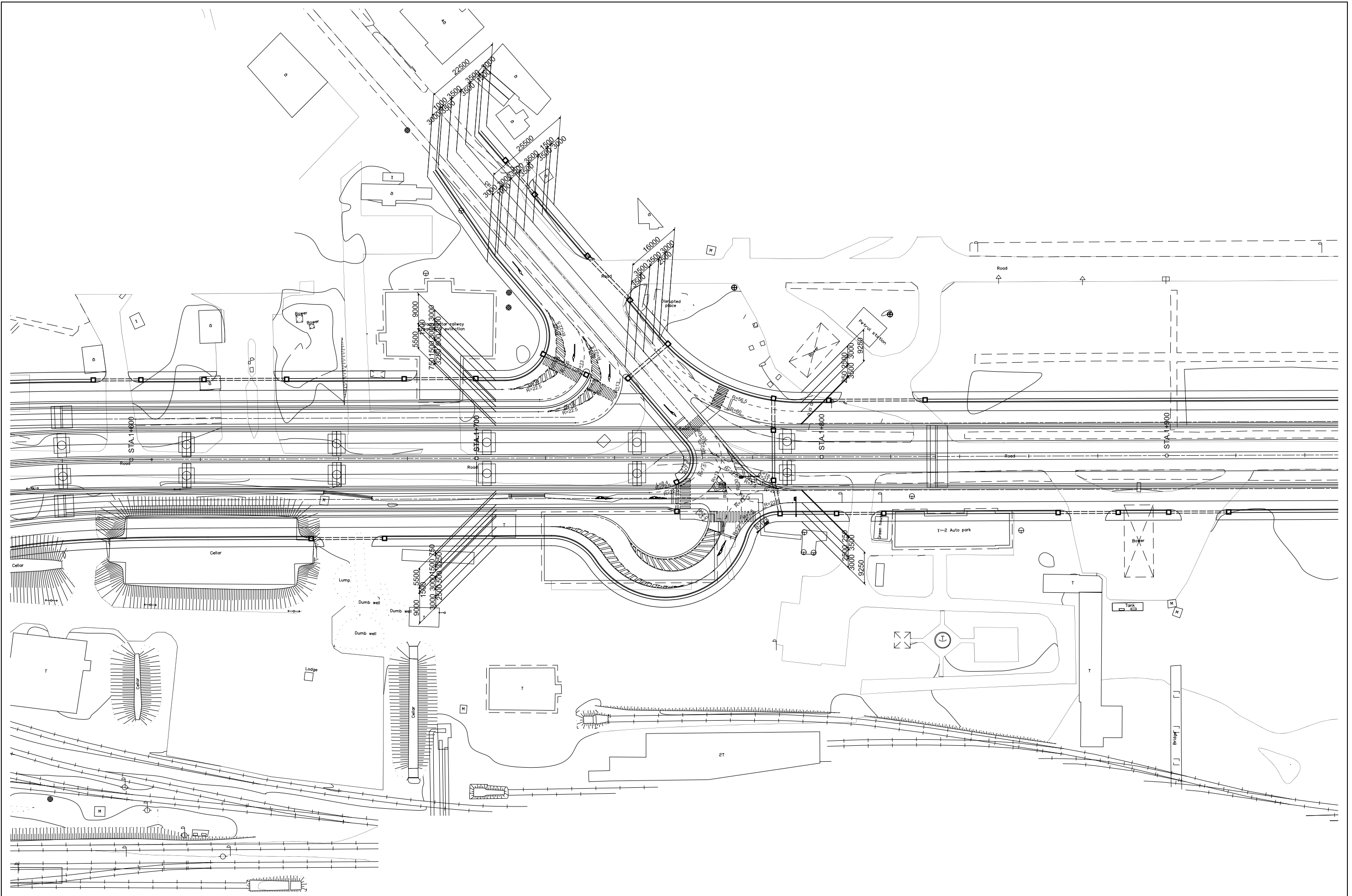


CTI Engineering International Co., Ltd.  
 Chodai Co., Ltd.  
 International Development Institute

DRAWING TITLE ;  
 INTERSECTION PLAN(1)

SCALE  
 S=1:1000

DRAWING No.  
 124

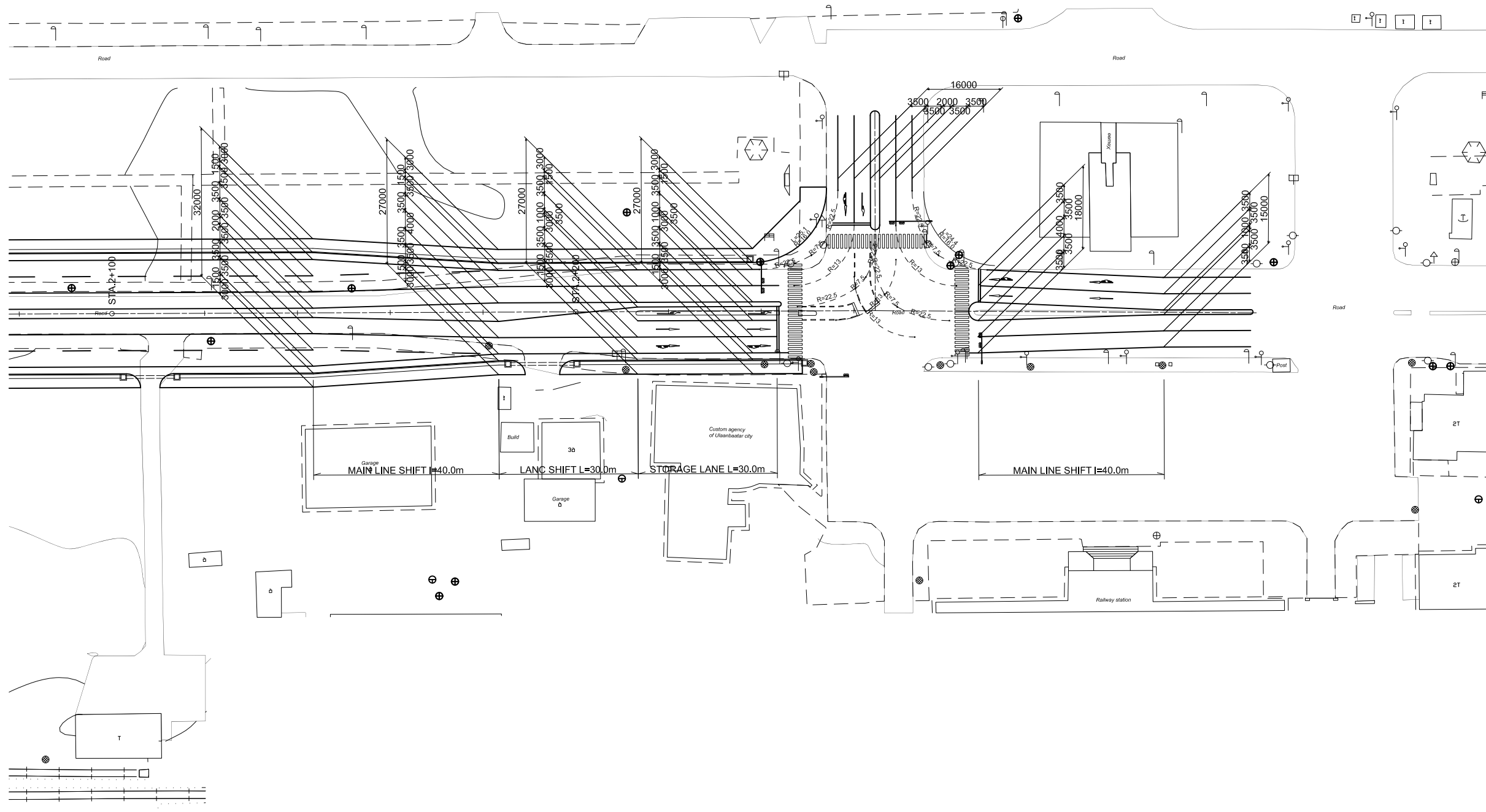


CTI Engineering International Co., Ltd.  
 Chodai Co., Ltd.  
 International Development Institute

DRAWING TITLE ;  
 INTERSECTION PLAN(2)

SCALE  
 S=1:1000

DRAWING No.  
 125



CTI Engineering International Co., Ltd.  
 Chodai Co., Ltd.  
 International Development Institute

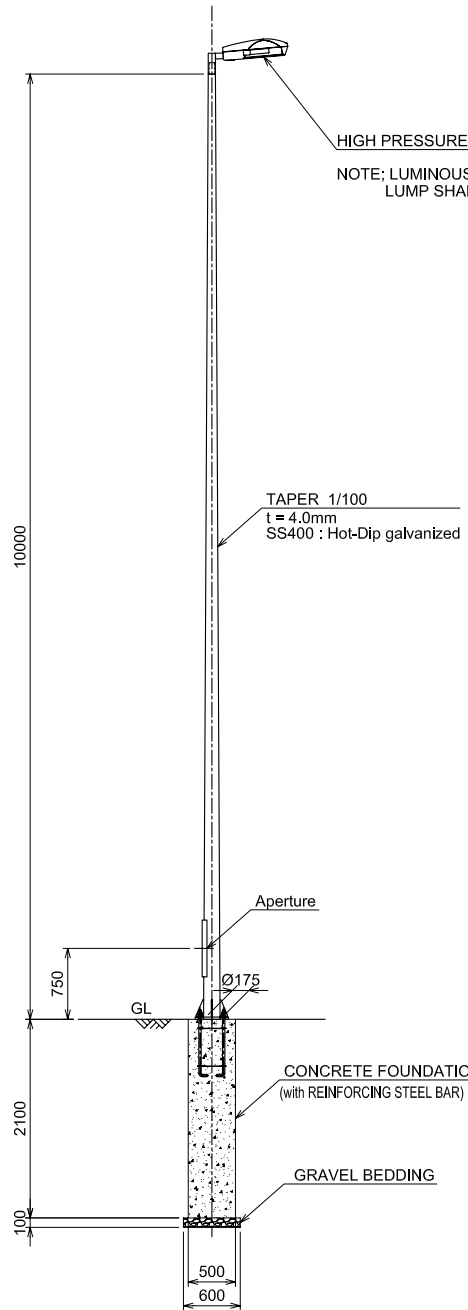
DRAWING TITLE ;  
 INTERSECTION PLAN(3)

SCALE  
 S=1:1000

DRAWING No.  
 126

# STREET LIGHT

## MAIN LINE



HIGH PRESSURE SODIUM LAMP  
NOTE: LUMINOUS FLUX OF THE HIGH PRESSURE SODIUM LAMP SHALL BE MORE THAN 15,000-lumen.

TAPER 1/100  
t = 4.0mm  
SS400 : Hot-Dip galvanized

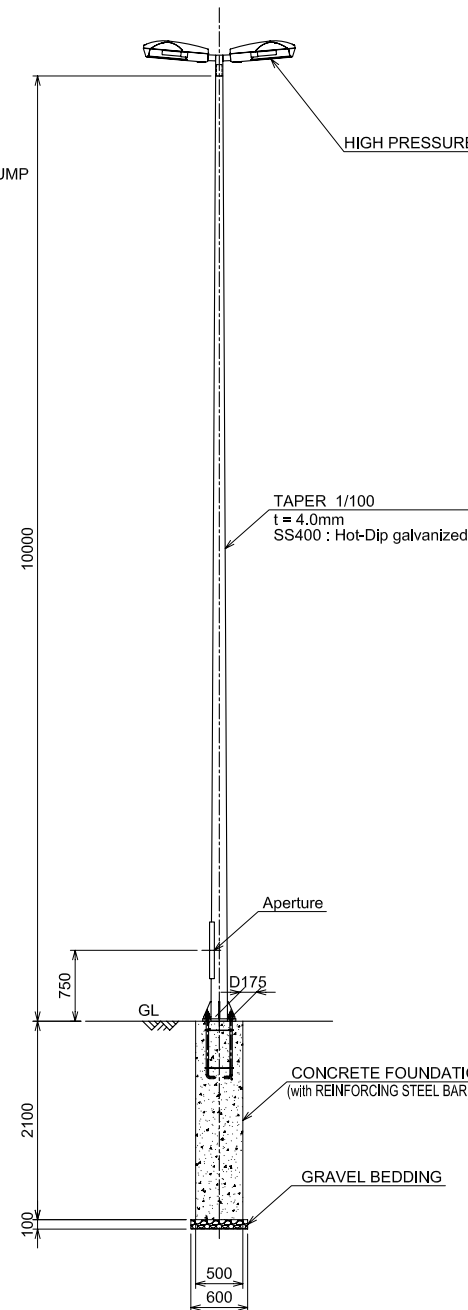
Aperture

CONCRETE FOUNDATION  
(with REINFORCING STEEL BAR)

GRAVEL BEDDING

NOTE: TO BE LOCATED AT SIDE WALK

DETAIL OF STREET LIGHT TYPE-1  
S=1:80



HIGH PRESSURE SODIUM LAMP

TAPER 1/100  
t = 4.0mm  
SS400 : Hot-Dip galvanized

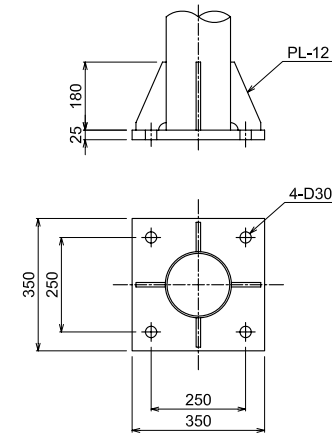
Aperture

CONCRETE FOUNDATION  
(with REINFORCING STEEL BAR)

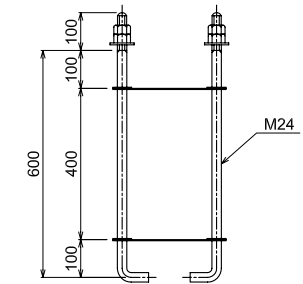
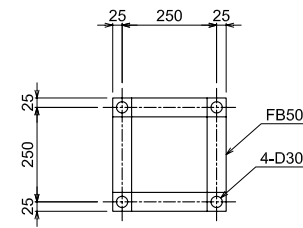
GRAVEL BEDDING

NOTE: TO BE LOCATED AT MEDIAN STRIP

DETAIL OF STREET LIGHT TYPE-2  
S=1:80

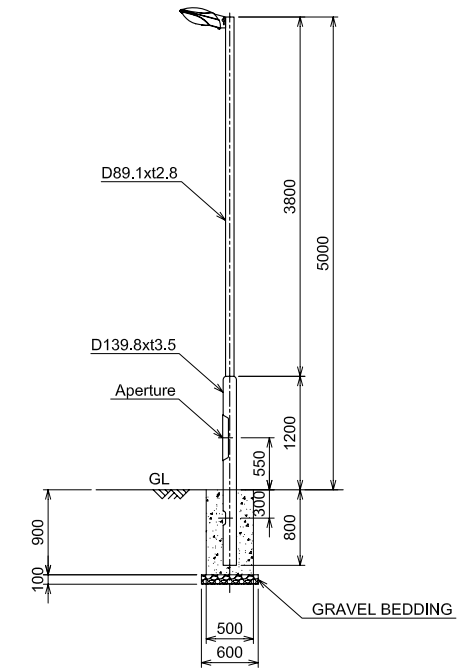


DETAIL OF BASE PLATE  
S=1:20



DETAIL OF ANCHOR BOLT  
S=1:20

## WEST INDUSTRIAL ROAD



D89.1x2.8

D139.8x3.5

Aperture

GL

GRAVEL BEDDING

PROJECT TITLE :  
THE PROJECT FOR CONSTRUCTION OF  
AJILCHIN FLY-OVER IN ULAANBAATAR CITY

DESIGNED BY ;  
CTI Engineering International Co., Ltd.  
Chodai Co., Ltd.  
International Development Institute

APPROVED BY :

DRAWING TITLE :  
STREET LIGHT

SCALE:

DRAWING No.  
127

HIGHWAY