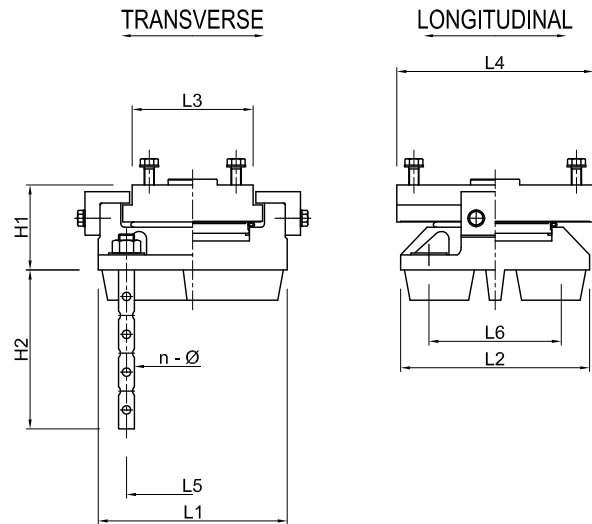


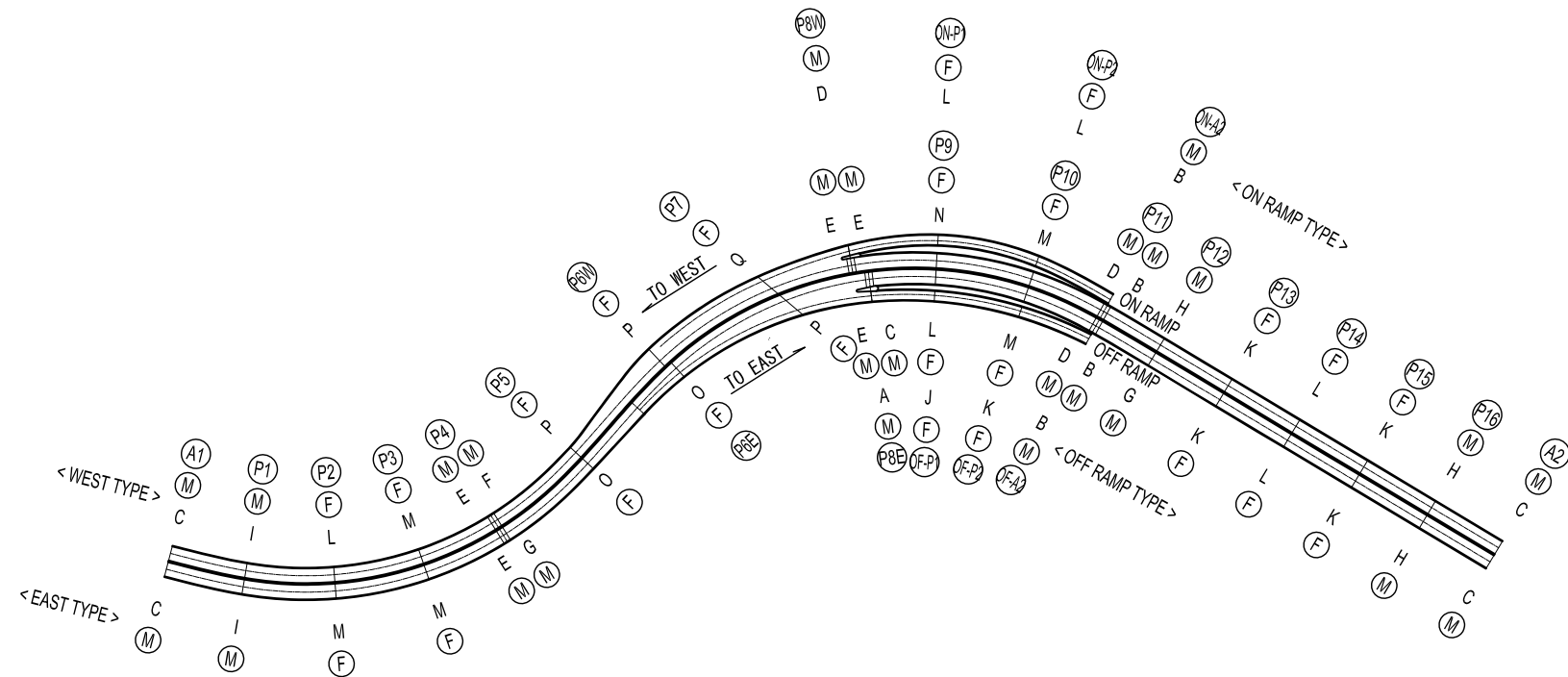
ARRANGEMENT OF BEARING



SHOE TOTAL WEIGHT

TYPE	CONDITION	DESIGN REACTION	NUMBER	UNIT WEIGHT (kg/unit)	WEIGHT (kg)
A	MOV	1500	2	474	948
B	MOV	1750	8	402	3,216
C	MOV	2000	10	474	4,740
D	MOV	2250	6	570	3,420
E	MOV	2500	12	673	8,076
F	MOV	3500	2	1,064	2,128
G	MOV	4000	4	1,323	5,292
H	MOV	4500	6	1,474	8,844
I	MOV	5000	4	1,744	6,976
J	FIX	3500	2	1,461	2,922
K	FIX	4000	10	1,756	17,560
L	FIX	4500	12	2,095	25,140
M	FIX	5000	10	2,430	24,300
N	FIX	5500	2	1,854	3,708
O	FIX	7500	5	3,071	15,355
P	FIX	8000	8	3,220	25,760
Q	FIX	8500	3	3,973	11,919
SUM			106		170,304

LOCATION



DESIGN CONDITION

		A1-P4 WEST						A1-P4 EAST						
		A1 MOV	P1 MOV	P2 FIX	P3 FIX	P4 MOV		A1 MOV	P1 MOV	P2 FIX	P3 FIX	P4 MOV		
TOTAL REACTON FORCE	R(kN)	1918	4691	4385	4731	2277		1943	4813	4575	4940	2376		
DEAD LOAD	Rd(kN)	1019	3116	2833	3149	1272		1036	3209	2981	3321	1349		
DIMENSION	L1 mm	530	810	770	810	590		530	810	810	810	590		
	L2 mm	530	810	770	810	590		530	810	810	810	590		
	L3 mm	340	590	550	590	400		340	590	590	590	400		
	L4 mm	510	740	650	690	550		510	740	690	690	550		
	L5 mm	360	550	530	550	410		360	550	550	550	410		
	L6 mm	360	550	530	550	410		360	550	550	550	410		
H1 mm	235	350	340	350	260		235	350	350	350	260			
ANC BOLT	n(set)	4	4	4	4	4		4	4	4	4	4		
	φ(mm)	38	60	80	85	42		38	60	85	85	42		
	H2(mm)	405	610	845	885	445		405	610	885	885	445		
TOTAL WEIGHT	W(kg)	434	1496	1378	1592	587		434	1496	1592	1592	587		
TYPE		C	I	L	M	E		C	I	M	M	E		
NUMBER		2	2	2	2	2		2	2	2	2	2		
		P4-P8 WEST						P4-P8 EAST						
		P4 MOV	P5 FIX	P6 FIX	P7 FIX	P8 MOV		P4 MOV	P5 FIX	P6 FIX	P7 FIX	P8 MOV		
TOTAL REACTON FORCE	R(kN)	3316	7899	7571	8035	2403		3593	7450	7247	7712	2473		
DEAD LOAD	Rd(kN)	2098	5590	5498	5495	1310		2333	5499	5233	5330	1342		
DIMENSION	L1 mm	680	1030	1030	1110	590		720	1010	1010	1030	590		
	L2 mm	680	1030	1030	1110	590		720	1010	1010	1030	590		
	L3 mm	470	770	770	840	400		510	760	760	770	400		
	L4 mm	640	870	870	930	550		690	860	860	870	550		
	L5 mm	470	700	700	750	410		490	680	680	700	410		
	L6 mm	470	700	700	750	410		490	680	680	700	410		
H1 mm	305	435	435	460	260		320	425	425	435	260			
ANC BOLT	n(set)	4	4	4	4	4		4	4	4	4	4		
	φ(mm)	50	110	110	120	42		55	110	110	110	42		
	H2(mm)	530	1145	1145	1230	445		575	1145	1145	1145	445		
TOTAL WEIGHT	W(kg)	916	3220	3220	3973	587		1099	3071	3071	3220	587		
TYPE		F	P	P	Q	E		G	O	O	P	E		
NUMBER		2	2	3	3	3		2	2	3	3	3		
		P8-P11 WEST						P8-P11 EAST						
		P8 MOV	P9 FIX	P10 FIX	P11 MOV			P8 MOV	P9 FIX	P10 FIX	P11 MOV			
TOTAL REACTON FORCE	R(kN)	2370	5003	4786	2137			1785	4411	4686	2038			
DEAD LOAD	Rd(kN)	1344	3385	3197	1168			891	2908	3132	1093			
DIMENSION	L1 mm	590	850	810	560			740	1040	810	560			
	L2 mm	590	850	810	560			530	770	810	560			
	L3 mm	400	620	590	370			530	770	590	370			
	L4 mm	550	720	690	530			340	550	690	530			
	L5 mm	410	580	550	380			510	650	550	380			
	L6 mm	410	580	550	380			360	530	550	380			
H1 mm	260	370	350	245			360	530	350	245				
ANC BOLT	n(set)	4	4	4	4			235	340	4	4			
	φ(mm)	42	90	85	42			4	4	85	42			
	H2(mm)	445	930	885	445			38	80	885	445			
TOTAL WEIGHT	W(kg)	587	1854	1592	508			405	845	1592	508			
TYPE		E	N	M	D			C	L	M	D			
NUMBER		2	2	2	2			2	2	2	2			
		P11-A2 WEST						P11-A2 EAST						
		P11 MOV	P12 MOV	P13 FIX	P14 FIX	P15 FIX	A2 MOV		P11 MOV	P12 MOV	P13 FIX	P14 FIX	P15 FIX	A2 MOV
TOTAL REACTON FORCE	R(kN)	1649	4033	3987	4048	3926	4320	1853	1627	3988	3999	4044	3925	4321
DEAD LOAD	Rd(kN)	820	2546	2473	2511	2411	2772	985	800	2503	2485	2508	2411	2773
DIMENSION	L1 mm	500	770	720	770	720	770	530	500	720	720	770	720	770
	L2 mm	500	770	720	770	720	770	530	500	720	720	770	720	770
	L3 mm	320	550	510	550	510	550	340	320	510	510	550	510	550
	L4 mm	490	720	620	650	620	720	510	490	690	620	650	620	720
	L5 mm	350	530	490	530	490	530	360	350	490	490	530	490	530
	L6 mm	350	530	490	530	490	530	360	350	490	490	530	490	530
H1 mm	225	340	320	340	320	340	235	225	320	320	340	320	340	
ANC BOLT	n(set)	4	4	4	4	4	4	4	4	4	4	4	4	4
	φ(mm)	36	60	75	80	75	60	38	36	55	75	80	75	60
	H2(mm)	360	615	755	845	755	615	405	360	575	755	845	755	615
TOTAL WEIGHT	W(kg)	367	1324	1139	1378	1139	1324	434	367	1099	1139	1378	1139	1324
TYPE		B	H	K	L	K	H	C	B	G	K	L	K	H
NUMBER		2	2	2	2	2	2	2	2	2	2	2	2	2
		ON RAMP TO WEST						OFF RAMP TO EAST						
		P8 MOV	ON-P1 FIX	ON-P2 FIX	ON-A2 MOV			P8 MOV	OFF-P1 FIX	OFF-P2 FIX	OFF-A2 MOV			
TOTAL REACTON FORCE	R(kN)	2211	4478	4236	1718			1341	3227	3522	1554			
DEAD LOAD	Rd(kN)	1336	3212	3003	984			685	2186	2435	859			
DIMENSION	L1 mm	560	770	770	500			460	680	720	500			
	L2 mm	560	770	770	500			460	680	720	500			
	L3 mm	370	550	550	320			280	470	510	320			
	L4 mm	530	650	650	490			470	550	620	490			
	L5 mm	380	530	530	350			320	470	490	350			
	L6 mm	380	530	530	350			320	470	490	350			
H1 mm	245	340	340	225			215	305	320	225				
ANC BOLT	n(set)	4	4	4	4			4	4	4	4			
	φ(mm)	42	80	80	36			32	70	75	36			
	H2(mm)	445	845	845	360			320	710	755	360			
TOTAL WEIGHT	W(kg)	508	1378	1378	367			304	940	1139	367			
TYPE		D	L	L	B			A	J	K	B			
NUMBER		2	2	2	2			2	2	2	2			

PROJECT TITLE ;
THE PROJECT FOR CONSTRUCTION OF
AJILCHIN FLY-OVER IN ULAANBAATAR CITY

DESIGNED BY ;
CTI Engineering International Co., Ltd.
Chodai Co., Ltd.
International Development Institute

APPROVED BY ;

DRAWING TITLE ;
ARRANGEMENT OF BEARING

SCALE
S=1:4000

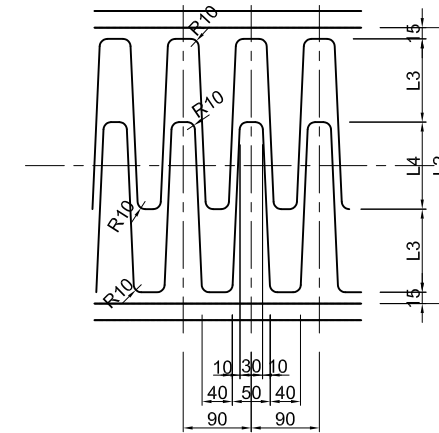
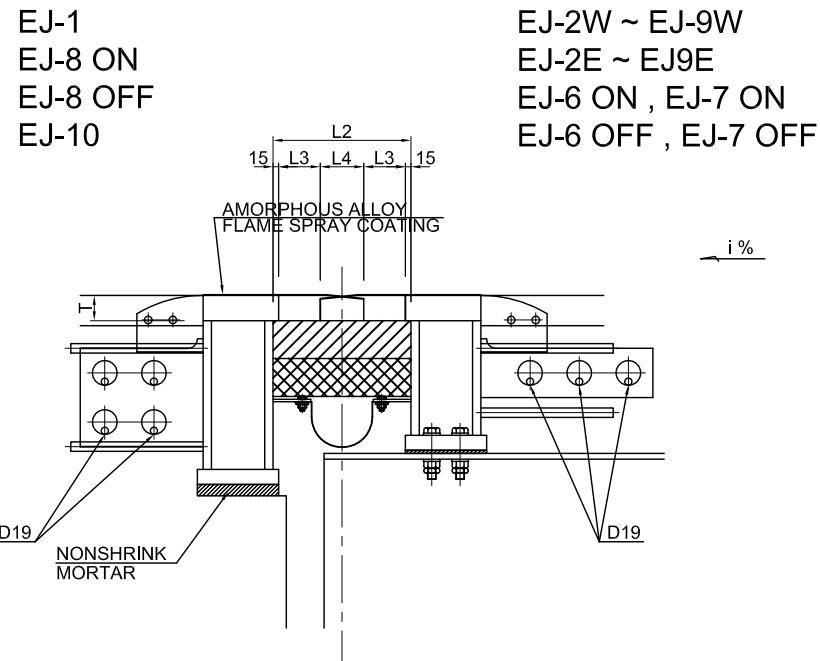
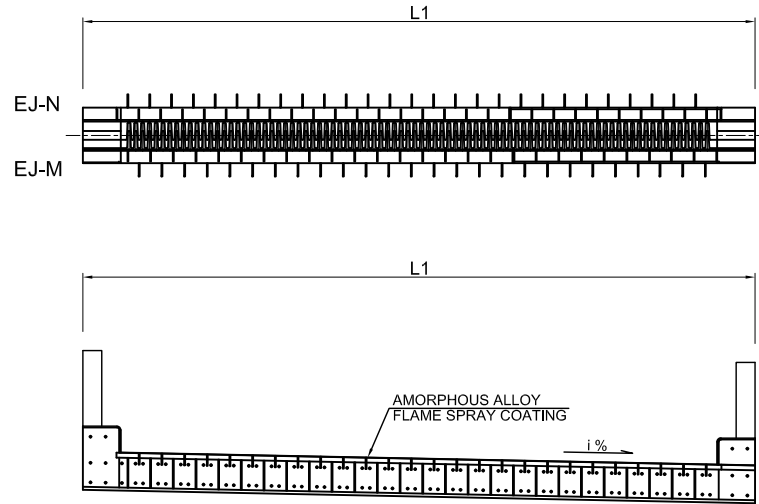
DRAWING No.
057

ACCESSARY

EXPANSION JOINT

CARRIGE WAY S=1:20

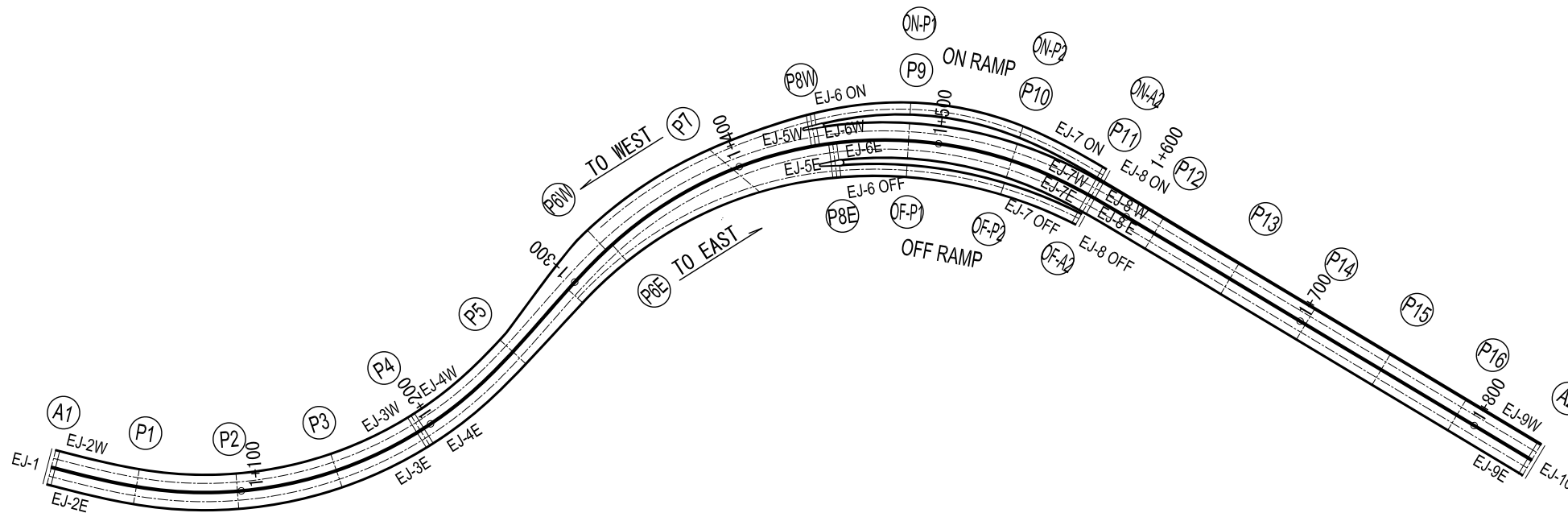
FACE PLATE S=1:10



EXPANSION JOINT

		A1		P4		P8		P11		A2				P8W		ON-A2		
WEST		EJ-1	EJ-2W	EJ-3W	EJ-4W	EJ-5W	EJ-6W	EJ-7W	EJ-8W	EJ-9W	EJ-10	ON-RAMP			EJ-6 ON	EJ-7 ON		
	L1	mm	17890	8890	8890	15947	8890	8890	8890	8890	17890		L1	mm	6409	6394		
	L2	mm	290	290	305	305	290	290	320	320	275		275	L2	mm	275	215	
	L3	mm	85	85	90	90	85	85	95	95	80		80	L3	mm	80	60	
	L4	mm	90	90	95	95	90	90	100	100	85		85	L4	mm	85	65	
	T	mm	58	58	59	59	58	58	60	60	56		56	T	mm	56	49	
WEIGHT	kg	7693	3823	3836	3836	6857	3823	3867	3867	3778	7603	WEIGHT	kg	2788	2609			
EAST			EJ-2E	EJ-3E	EJ-4E	EJ-5E	EJ-6E	EJ-7E	EJ-8E	EJ-9E		OFF-RAMP			P8E	OFF-A2		
	L1	mm	8890	8890	8890	17173	8890	8890	8890	8890					EJ-6 OFF	EJ-7 OFF		
	L2	mm	290	305	305	290	290	320	320	275			L1	mm	6409	6390		
	L3	mm	85	90	90	85	85	95	95	80			L2	mm	275	215		
	L4	mm	90	95	95	90	90	100	100	85			L3	mm	80	60		
	T	mm	58	59	59	58	58	60	60	56			L4	mm	85	65		
WEIGHT	kg		3823	3836	3836	7384	3823	3867	3867	3778		T	mm	56	49			
												WEIGHT	kg	2788	2607			

PLAN S=1:3000



PROJECT TITLE ;
THE PROJECT FOR CONSTRUCTION OF
AJILCHIN FLY-OVER IN ULAANBAATAR CITY

DESIGNED BY ;
CTI Engineering International Co., Ltd.
Chodai Co., Ltd.
International Development Institute

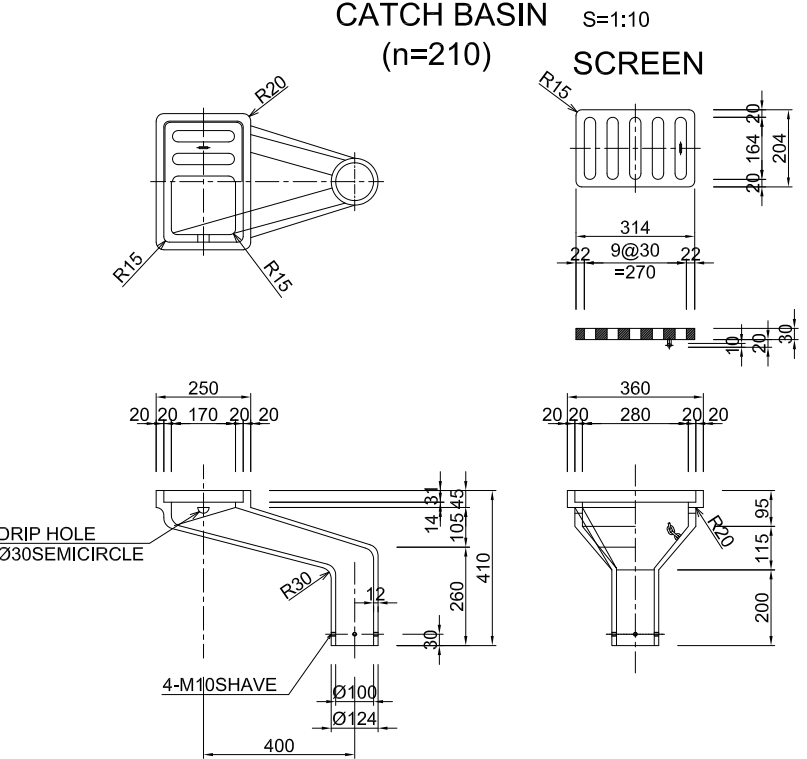
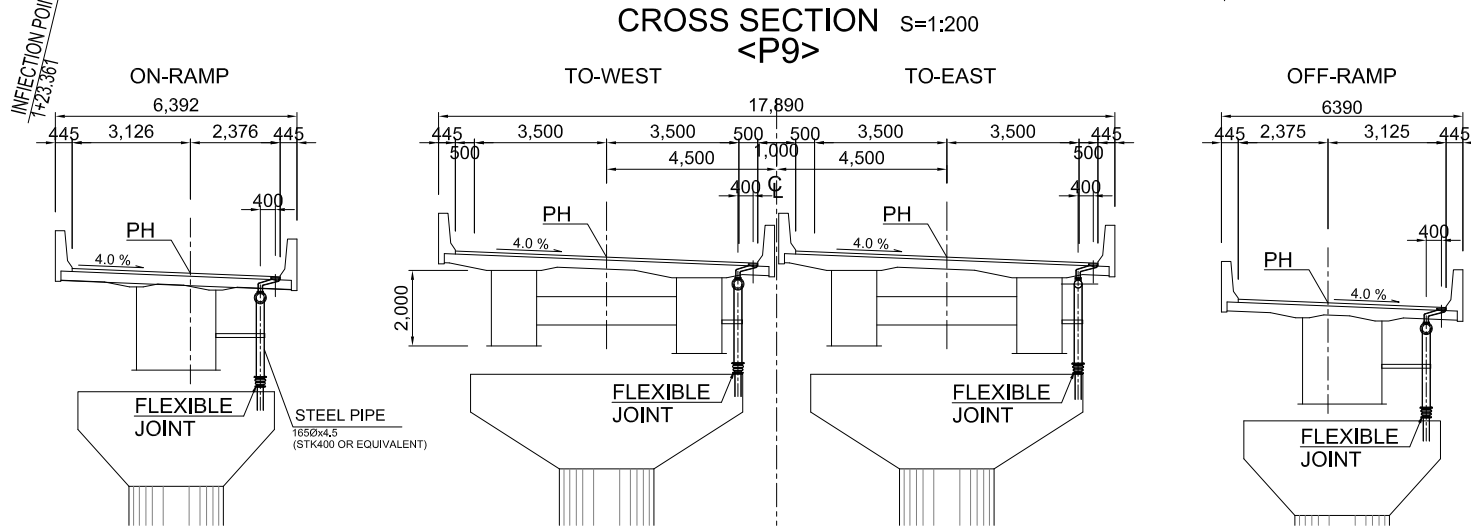
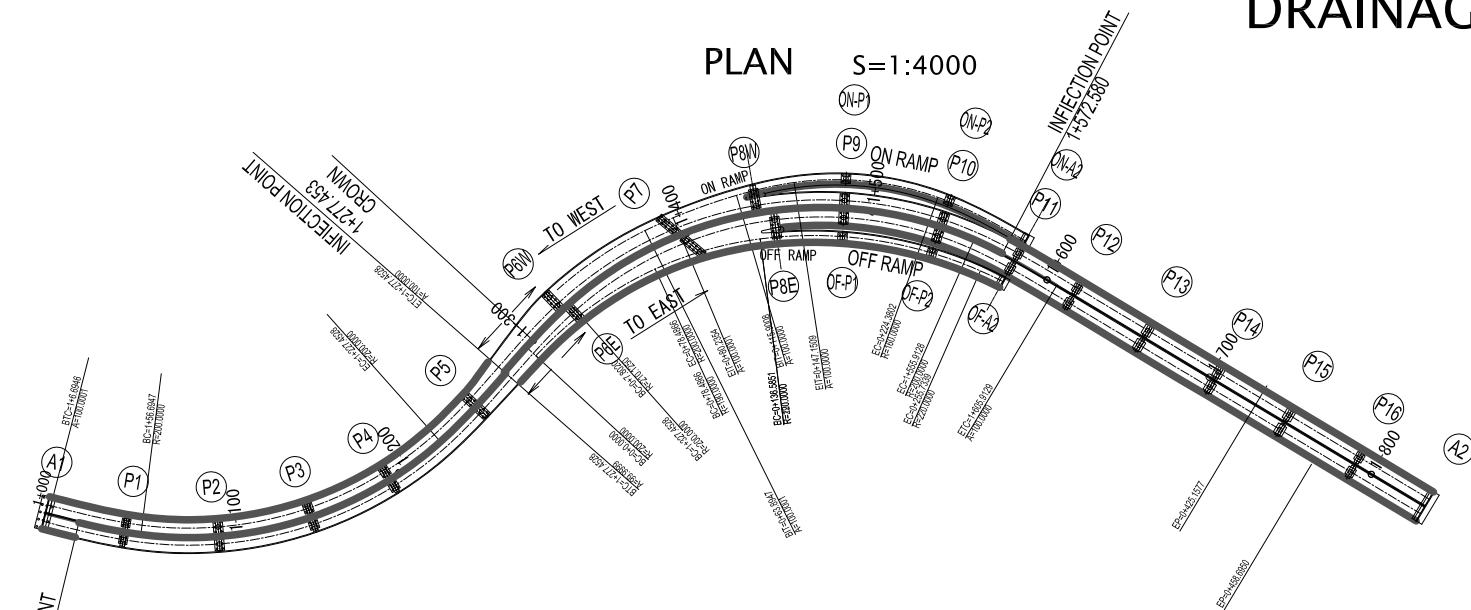
APPROVED BY ;

DRAWING TITLE ;
EXPANSION JOINT

SCALE
S=1:3000

DRAWING No.
058
ACCESSARY

DRAINAGE PLAN



DRAINAGE LIST

SECTION	LOCATION	WEST			FACILITY				
		L SIDE	R SIDE	INTERVAL (m)	NUMBER	WEIGHT (kg)	LENGTH (m)	WEIGHT (kg)	
A1	1+5.000								
ABUT DR	1+6.500	o			1	62			
	L=40.250			13.4	2	124	26.8	993	
PIER DR	1+46.750	o			1	62			
P1	1+48.000								
	L=50.000			25.0	1	62	25.0	925	
PIER DR	1+96.750	o			1	62			
P2	1+98.000								
	L=50.000			25.0	1	62	25.0	925	
PIER DR	1+146.750	o			1	62			
P3	1+148.000								
	L=162.750			16.0	1	62	16.0	592	
	L=19.000			9.5	1	62	9.5	352	
P4	1+194.000								
PIER DR	1+195.250	o			1	62			
	L=27.500			9.2	2	124	27.5	1018	
	L=222.750				1	62			
	L=30.000			5.0	5	310	25.0	925	
PIER DR	1+252.750	o			1	62			
P5	1+254.000								
	L=19.703			4.9	3	186	19.7	729	
	L=272.453	o	o		2	124	10.0	370	
INF POINT	1+277.453	o	o		2	124	10.0	370	
	L=282.453	o	o		2	124			
	L=15.047			5.0	2	124	15.0	557	
	L=297.500	o	o		1	62			
CRWN	1+300.000								
	L=302.500								
P6W	1+322.000								
	L=30.0	o	o	5.0	5	310	30.0	1110	
	L=332.500	o	o		1	62			
	L=39.5	o	o	7.9	4	248	39.5	1462	
	L=372.000	o	o		1	62			
	L=25.750	o	o	8.6	2	124	25.8	953	
P7	1+396.500								
PIER DR	1+397.750	o			1	62			
	L=40.000	o	o	13.3	2	124	26.7	987	
PIER DR	1+437.750	o			1	62			
P8W	1+439.000								
	L=47.250	o	o	15.8	2	124	31.5	1166	
P9	1+485.000								
PIER DR	1+486.250	o			1	62			
	L=52.000	o	o	13.0	3	186	39.0	1443	
P10	1+537.000								
PIER DR	1+538.250	o			1	62			
	L=29.330	o	o	7.3	3	186	22.0	814	
	L=567.580	o	o		2	124	10.0	370	
INF POINT	1+572.580	o	o		2	124	12.3	457	
PIER DR	1+578.750	o	o		2	124			
P11	1+580.000								
	L=37.250	o	o	5.3	6	371	31.9	1181	
P12	1+616.000								
PIER DR	1+617.250	o			1	62			
	L=43.500	o	o	5.4	7	433	38.1	1408	
P13	1+659.500								
PIER DR	1+660.750	o			1	62			
	L=43.500	o	o	5.4	7	433	38.1	1408	
P14	1+703.000								
PIER DR	1+704.250	o			1	62			
	L=43.500	o	o	5.4	7	433	38.1	1408	
P15	1+746.500								
PIER DR	1+747.750	o			1	62			
	L=10.000	o	o	5.0	1	62	5.0	185	
	L=757.750	o	o						
	L=33.500	o	o	8.4	3	186	33.5	1240	
P16	1+790.000								
PIER DR	1+791.250	o			1	62			
	L=40.250	o	o	13.4	2	124	26.8	993	
ABUT DR	1+831.500	o			1	62			
A2	1+833.000								
TOTAL					104	6,438	657.8	24,338	

NOTE: VERTICAL AND HORIZONTAL DRAINAGE PIPE SHALL BE STEEL PIPE (STK400).

DRAINAGE LIST

SECTION	LOCATION	EAST			FACILITY				
		L SIDE	R SIDE	INTERVAL (m)	NUMBER	WEIGHT (kg)	LENGTH (m)	WEIGHT (kg)	
A1	1+5.000								
ABUT DR	1+6.500		o		1	62			
	L=11.861			11.9	0	0	11.9	439	
	L=18.361	o	o		2	124	10.0	370	
INF POINT	1+23.361	o	o		2	124	10.0	370	
	L=28.361	o	o		2	124			
	L=18.389	o	o	6.1	2	124	12.3	454	
PIER DR	1+46.750	o			1	62			
P1	1+48.000								
	L=50.000	o		25.0	1	62	25.0	925	
PIER DR	1+96.750	o			1	62			
P2	1+98.000								
	L=50.000	o		25.0	1	62	25.0	925	
PIER DR	1+146.750	o			1	62			
P3	1+148.000								
	L=147.250	o		23.6	1	62	23.6	874	
P4	1+194.000								
PIER DR	1+195.250	o			1	62			
	L=32.203	o		8.1	3	186	32.2	1192	
	L=227.453	o	o		1	62			
	L=25.297	o	o	6.3	3	186	19.0	702	
PIER DR	1+252.750	o			1	62			
P5	1+254.000								
	L=19.703			4.9	3	186	19.7	729	
	L=272.453	o	o		2	124	10.0	370	
INF POINT	1+277.453	o	o		2	124	10.0	370	
	L=282.453	o	o		2	124			
	L=15.047	o	o	5.0	2	124	15.0	557	
	L=297.500	o	o		1	62			
CRWN	1+300.000								
	L=302.500								
P6E	1+326.000								
	L=95.250	o	o	31.8	2	124	63.5	2350	
P7	1+396.500								
PIER DR	1+397.750	o			1	62			
	L=48.500	o	o	24.3	1	62	24.3	897	
PIER DR	1+446.250	o			1	62			
P8E	1+447.500								
	L=38.750	o	o	12.9	2	124	25.8	956	
P9	1+485.000								
PIER DR	1+486.250	o			1	62			
	L=52.000	o	o	13.0	3	186	39.0	1443	
P10	1+537.000								
PIER DR	1+538.250	o			1	62			
	L=16.000	o	o	16.0					
	L=554.250	o	o		1	62			
	L=25.750	o	o	5.2	4	248	25.8	953	
PIER DR	1+578.750	o			1	62			
P11	1+580.000								
	L=37.250	o	o	5.3	6	371	31.9	1181	
P12	1+616.000								
PIER DR	1+617.250	o			1	62			
	L=43.500	o	o	5.4	7	433	38.1	1408	
P13	1+659.500								
PIER DR	1+660.750	o			1	62			
	L=43.500	o	o	5.4	7	433	38.1	1408	
P14	1+703.000								
PIER DR	1+704.250	o			1	62			
	L=43.500	o	o	5.4	7	433	38.1	1408	
P15	1+746.500								
PIER DR	1+747.750	o			1	62			
	L=43.500	o	o	5.4	7	433	38.1	1408	
P16	1+790.000								
PIER DR	1+791.250	o			1	62			
	L=40.250	o	o	13.4	2	124	26.8	993	
ABUT DR	1+831.500	o			1	62			
A2	1+833.000								
TOTAL					96	5,942	613.0	22,682	

PROJECT TITLE ;
THE PROJECT FOR CONSTRUCTION OF
AJILCHIN FLY-OVER IN ULAANBAATAR CITY

DESIGNED BY ;
CTI Engineering International Co., Ltd.
Chodai Co., Ltd.
International Development Institute

APPROVED BY ;

DRAWING TITLE ;
DRAINAGE PLAN

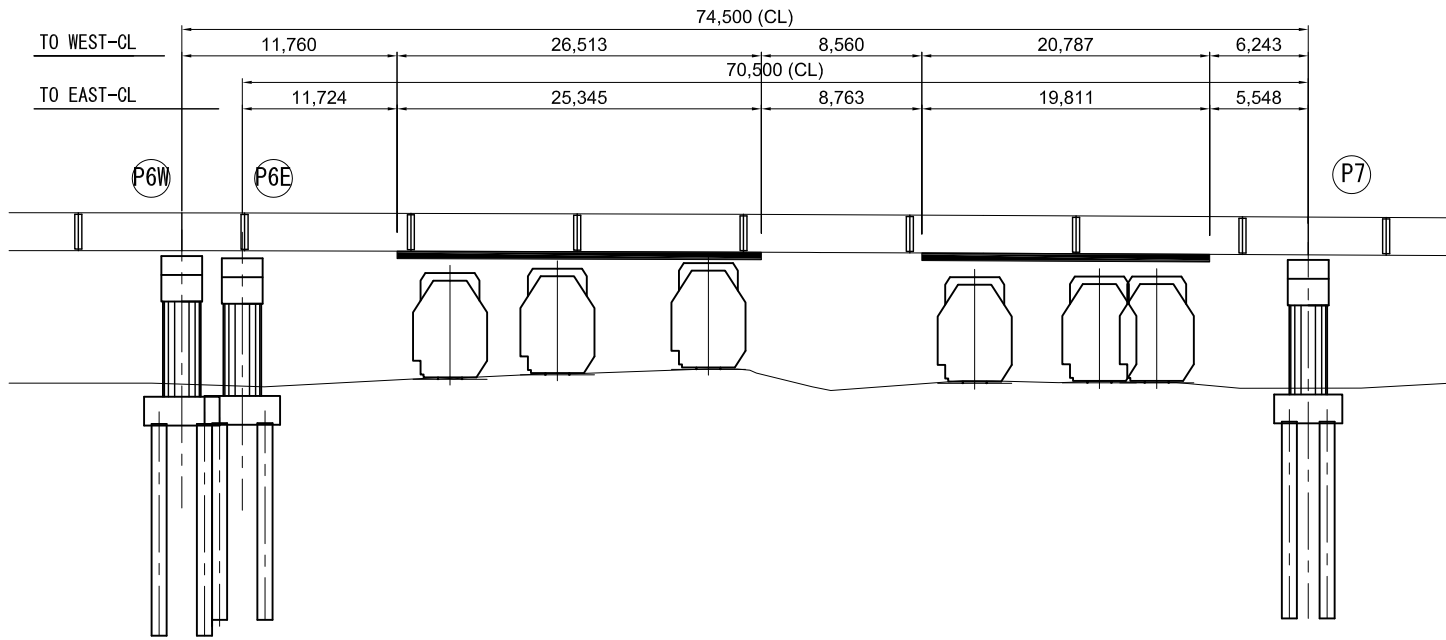
SCALE
S=1:4000

DRAWING No.
059

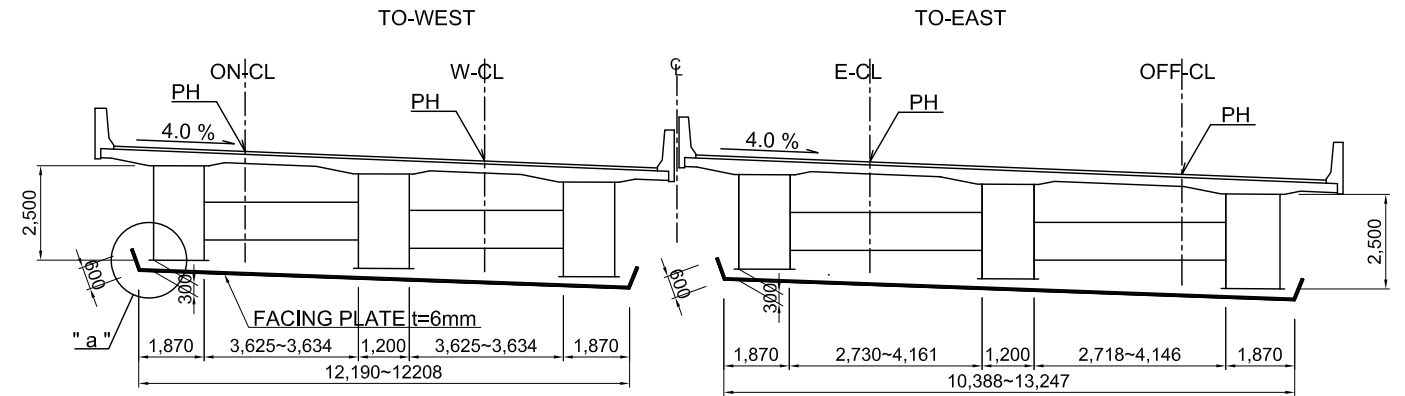
ACCESSARY

P6-P7 HEAT INSULATING PLATE

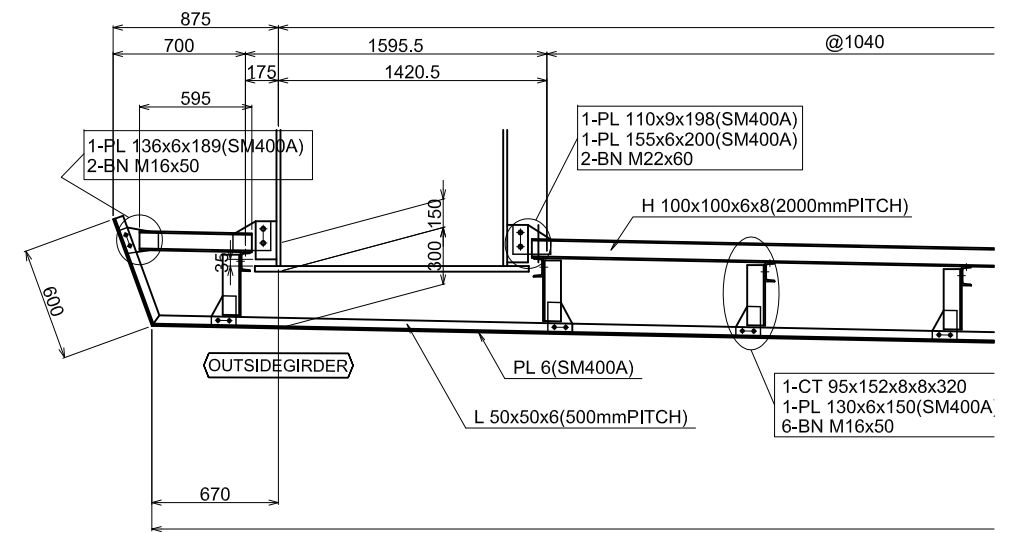
PROFILE S=1:500



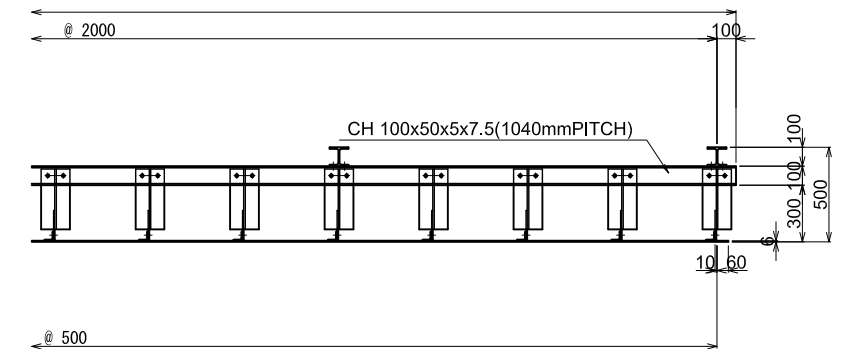
CROSS SECTION S=1:200



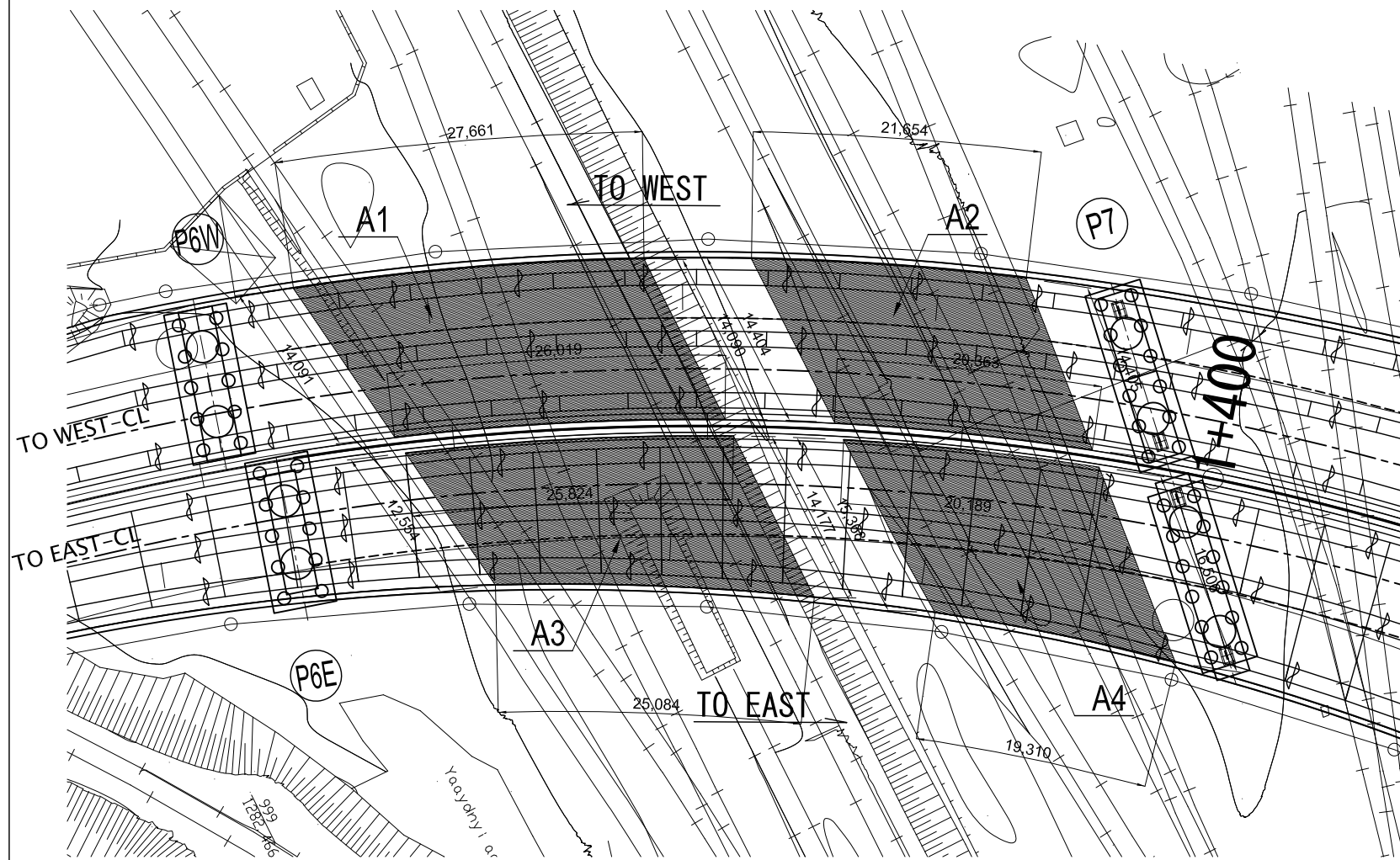
"a" SECTION S=1:40



PROFILE



PLAN S=1:500



	SECTION	AREA (m ²)	WEIGHT (kg)
WEST	A1	338	16,900
	A2	265	13,250
EAST	A3	295	14,750
	A4	263	13,150
TOTAL		1,161	58,050

PROJECT TITLE ;
THE PROJECT FOR CONSTRUCTION OF
AJILCHIN FLY-OVER IN ULAANBAATAR CITY

DESIGNED BY ;
CTI Engineering International Co., Ltd.
Chodai Co., Ltd.
International Development Institute

APPROVED BY ;

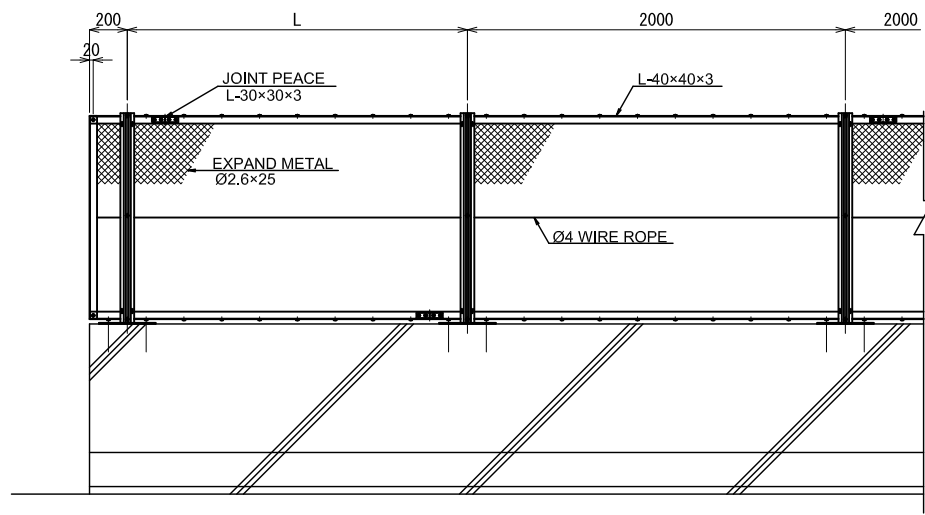
DRAWING TITLE ;
P6-P7 HEAT INSULATING PLATE

SCALE
S=1:500

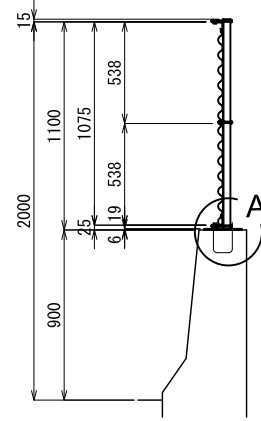
DRAWING No.
060
ACCESSARY

GUARD FENCE

FRONT VIEW S=1:20



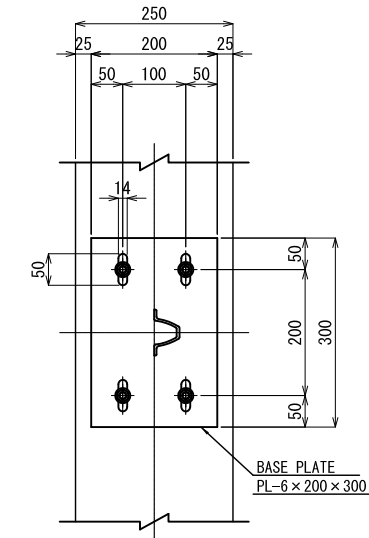
CROSS SECTION S=1:20



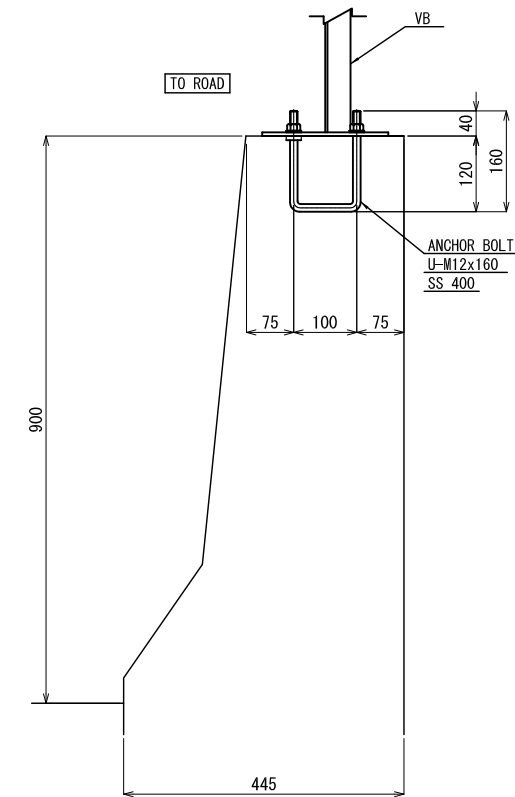
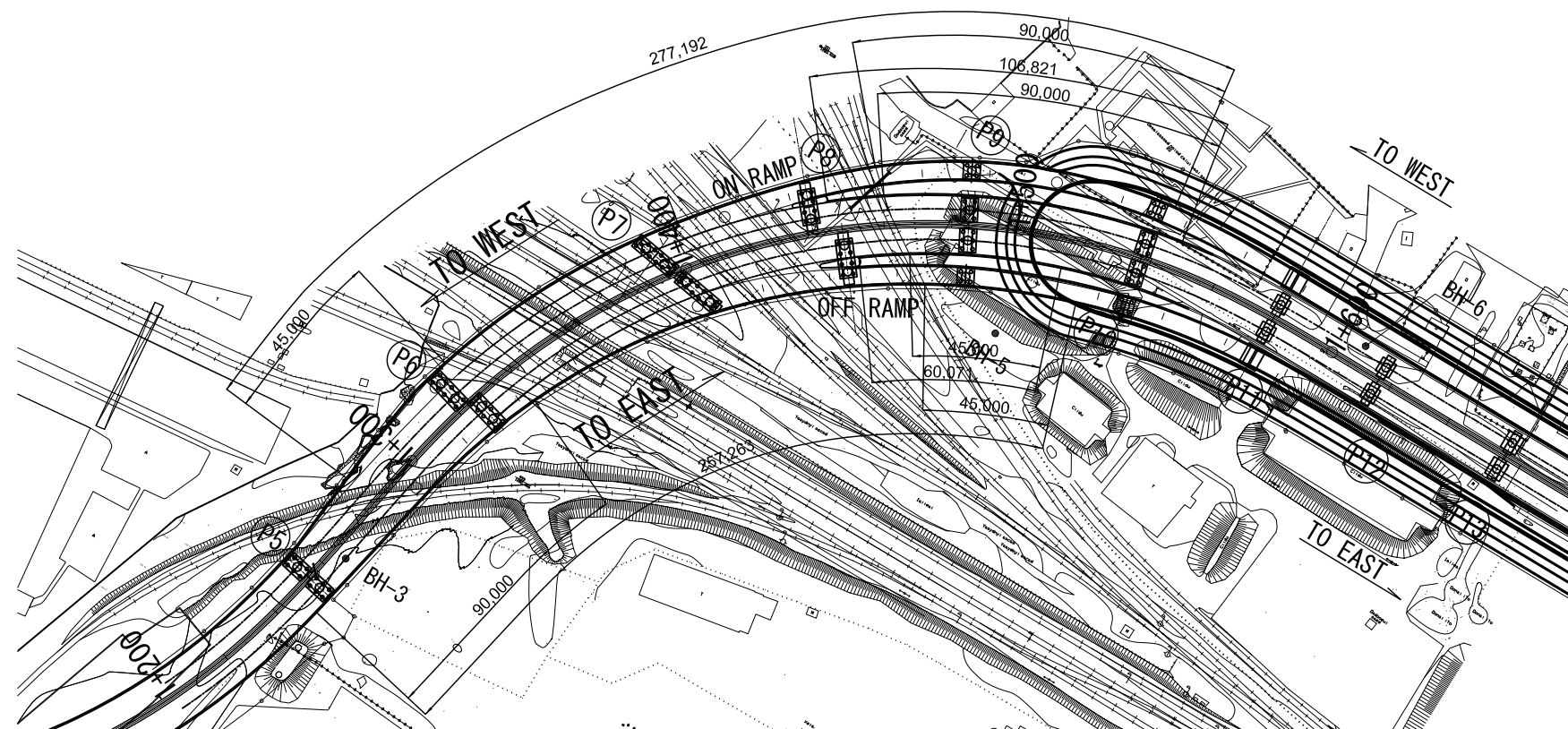
WEIGHT LIST

	SECTION	LENGTH m	WEIGHT kg
ON-RAMP	L	136	1,061
WEST	L	166	1,295
EAST	R	206	1,607
OFF-RAMP	R	81	632
TOTAL		589	2,902

" A " SECTION S=1:6



LOCATION S=1:3000



PROJECT TITLE ;
THE PROJECT FOR CONSTRUCTION OF
AJILCHIN FLY-OVER IN ULAANBAATAR CITY

DESIGNED BY ;
CTI Engineering International Co., Ltd.
Chodai Co., Ltd.
International Development Institute

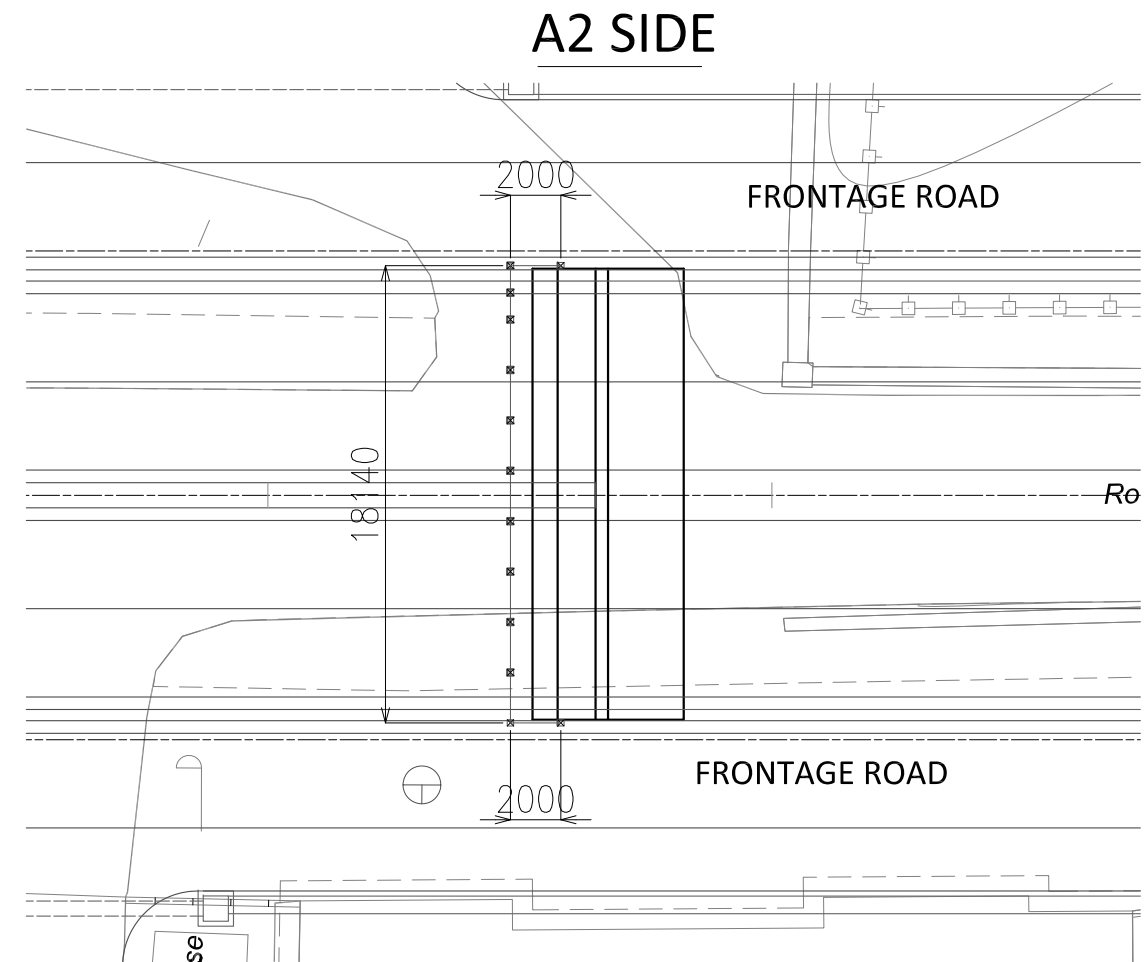
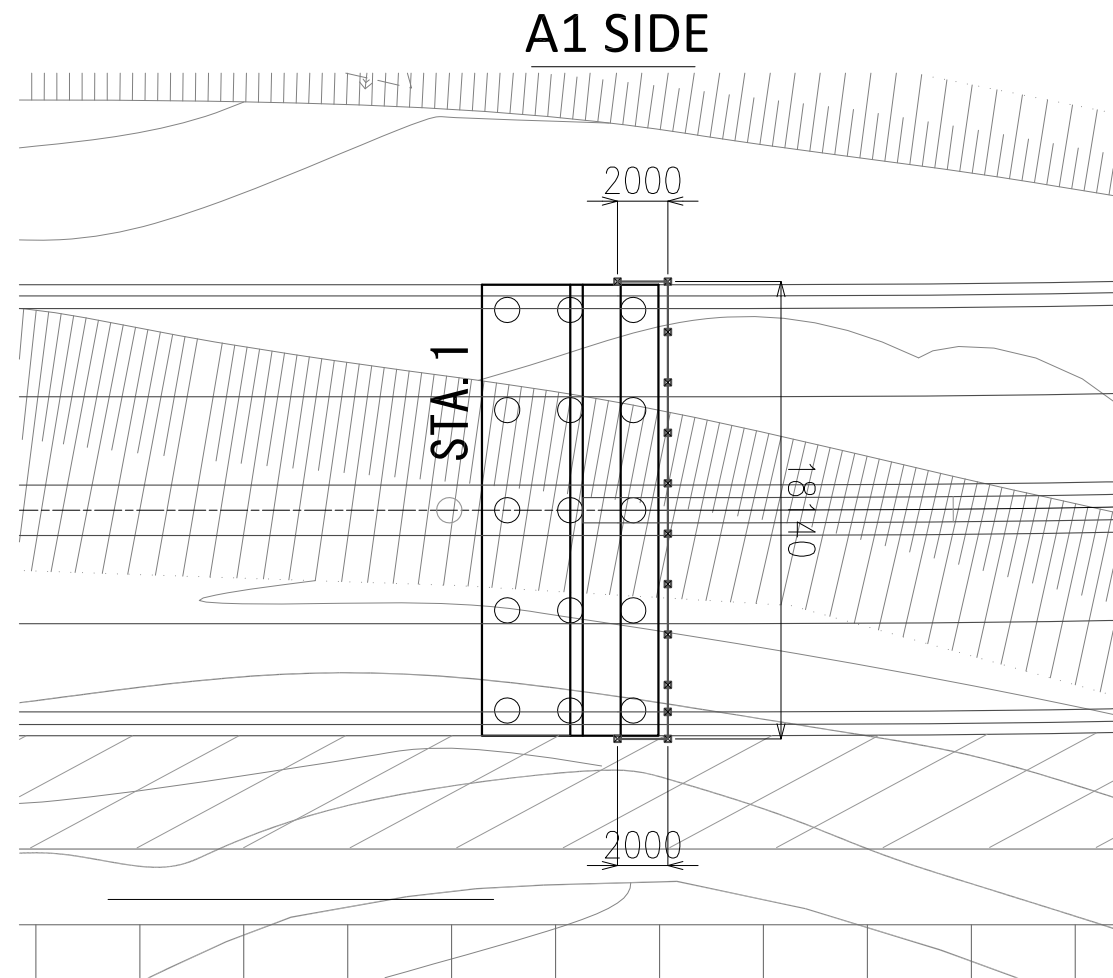
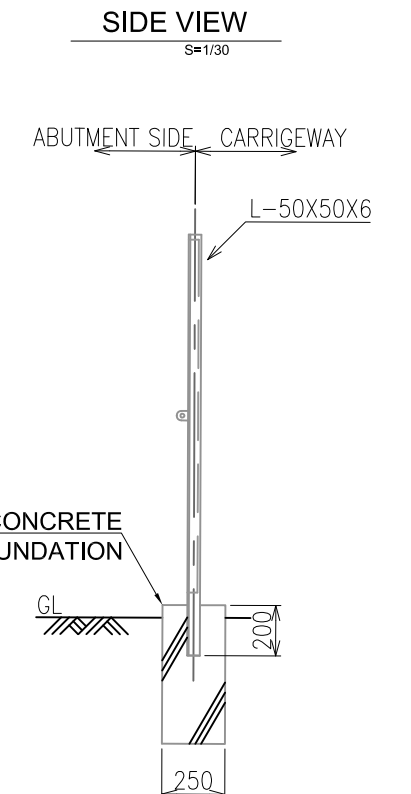
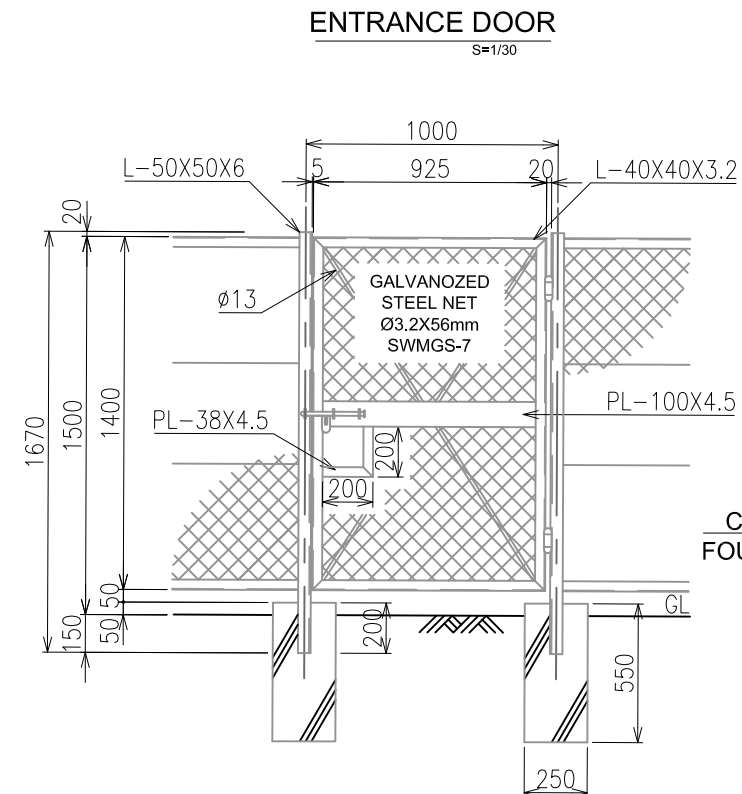
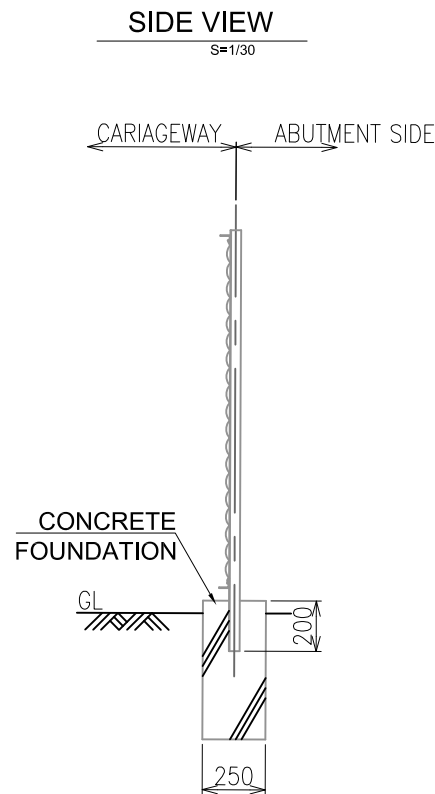
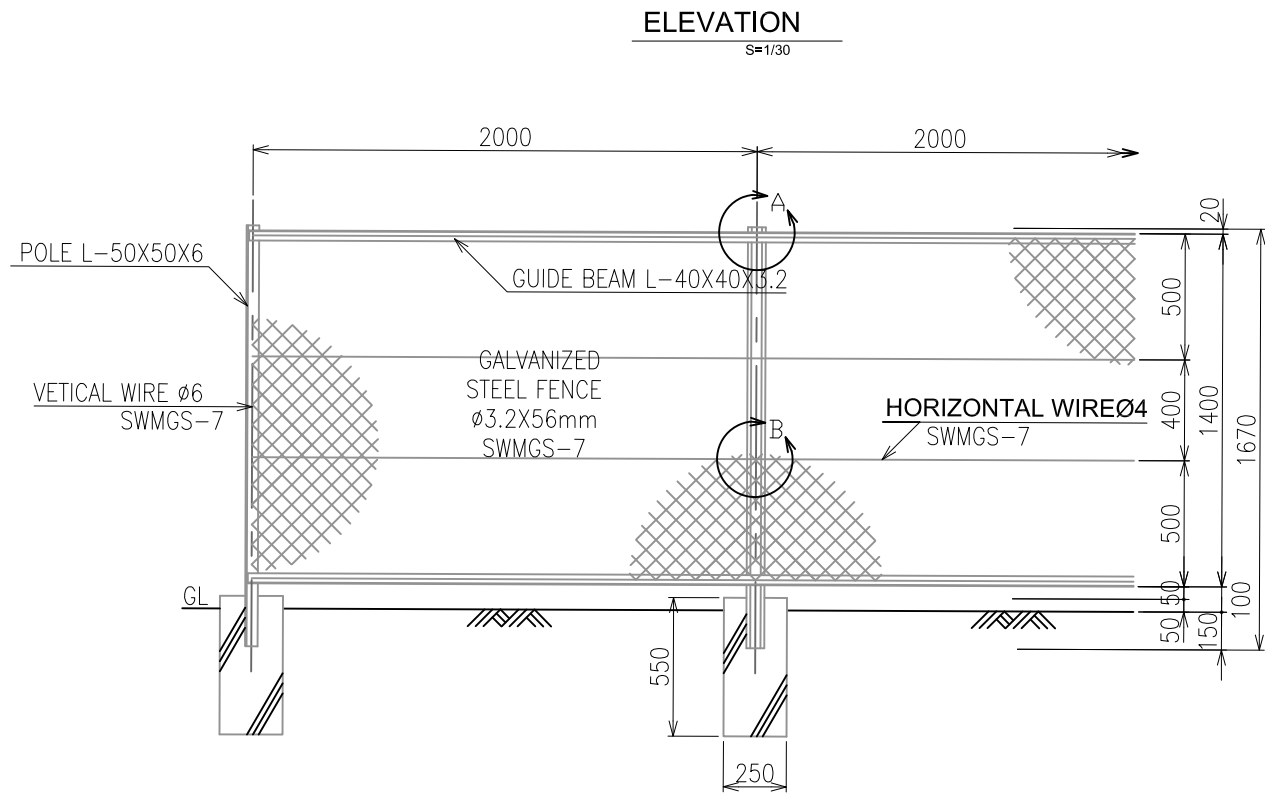
APPROVED BY ;

DRAWING TITLE ;
GUARD FENCE

SCALE
S=1:3000

DRAWING No.
061

ACCESSARY



PROJECT TITLE ;
THE PROJECT FOR CONSTRUCTION OF
AJILCHIN FLY-OVER IN ULAANBAATAR CITY

DESIGNED BY ;
CTI Engineering International Co., Ltd.
Chodai Co., Ltd.
International Development Institute

APPROVED BY ;

DRAWING TITLE ;
SECURITY FENCE

SCALE
S=1:300
S=1:30

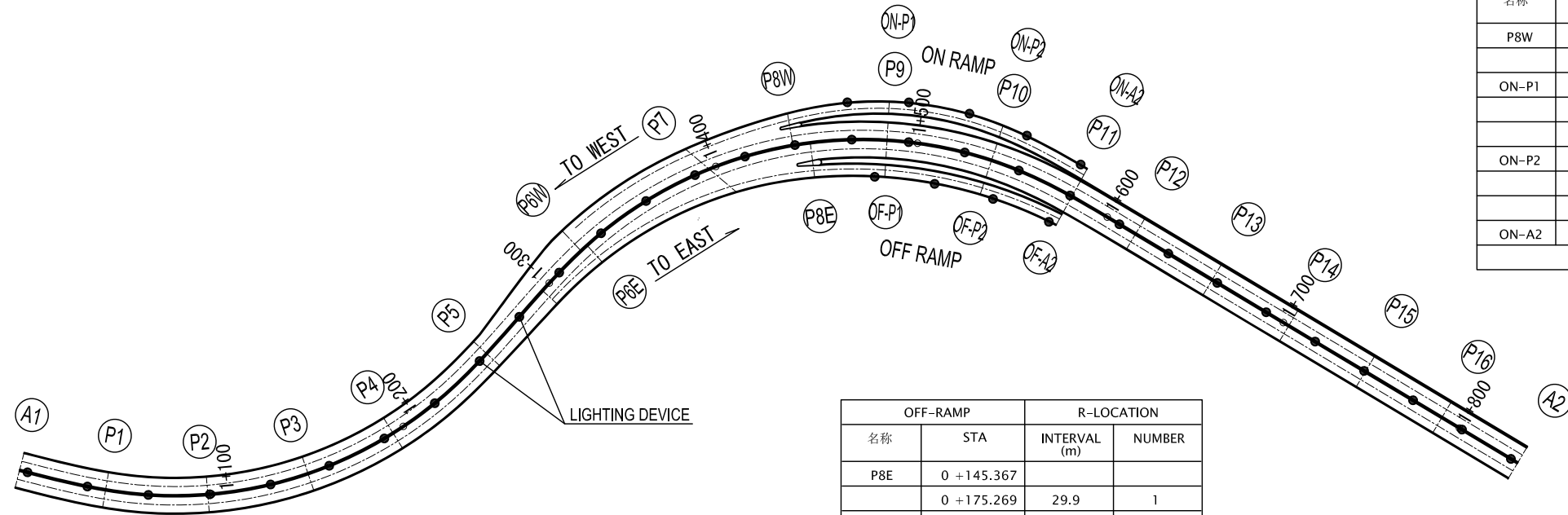
DRAWING No.
061A

ACCESSORY

ARRANGEMENT OF STREET LIGHTING

LOCATION S=1:3000

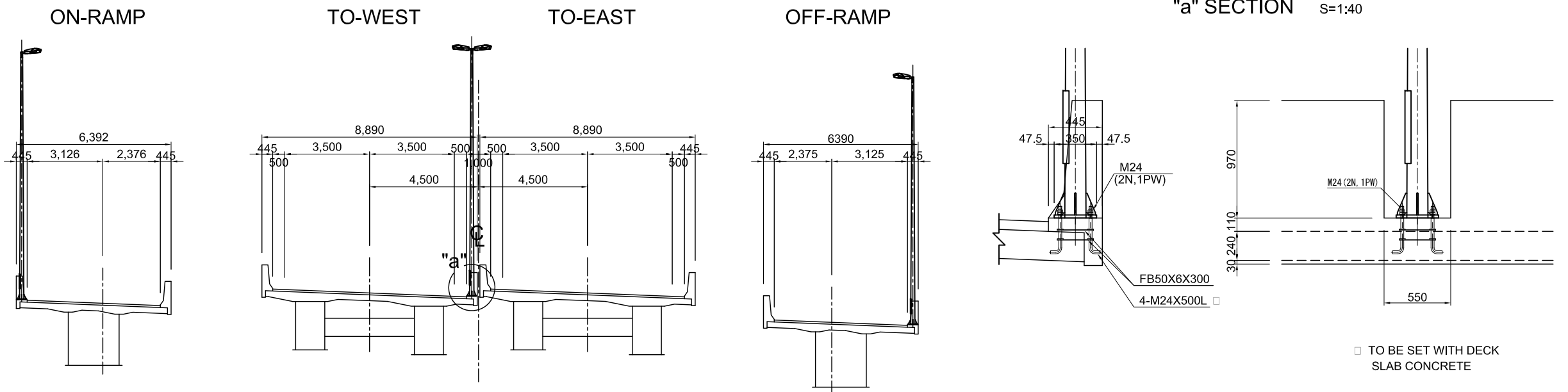
WEST		R-LOCATION	
名称	STA	INTERVAL (m)	NUMBER
A1	1 +5.000		
	1 +9.000	4.0	1
	1 +39.000	30.0	1
P1	1 +48.000		
	1 +69.000	30.0	1
	1 +99.000	30.0	1
P2	1 +98.000		
	1 +129.000	30.0	1
P3	1 +148.000		
	1 +159.000	30.0	1
	1 +189.000	30.0	1
P4	1 +194.000		
	1 +219.000	30.0	1
	1 +249.000	30.0	1
P5	1 +254.000		
	1 +278.000	29.0	1
	1 +307.000	29.0	1
P6W	1 +322.000		
	1 +335.000	28.0	1
	1 +362.000	27.0	1
	1 +389.000	27.0	1
P7	1 +396.500		
	1 +415.000	26.0	1
P8W	1 +439.000		
	1 +440.000	25.0	1
	1 +467.786	27.8	1
P9	1 +485.000		
	1 +495.571	27.8	1
	1 +523.357	27.8	1
P10	1 +537.000		
	1 +551.143	27.8	1
	1 +578.929	27.8	1
P11	1 +580.000		
	1 +606.714	27.8	1
P12	1 +616.000		
	1 +634.500	27.8	1
P13	1 +659.500		
	1 +662.286	27.8	1
	1 +690.071	27.8	1
P14	1 +703.000		
	1 +717.857	27.8	1
P15	1 +746.500		
	1 +745.643	27.8	1
	1 +773.429	27.8	1
P16	1 +790.000		
	1 +801.214	27.8	1
	1 +829.000	27.8	1
A2	1 +833.000		
SUM			30



ON-RAMP		L-LOCATION	
名称	STA	INTERVAL (m)	NUMBER
P8W	0 +125.258		
	0 +154.646	29.4	1
ON-P1	0 +174.634		
	0 +184.034	29.4	1
	0 +213.422	29.4	1
ON-P2	0 +230.670		
	0 +242.810	29.4	1
	0 +272.198	29.4	1
ON-A2	0 +276.198		
SUM			5

OFF-RAMP		R-LOCATION	
名称	STA	INTERVAL (m)	NUMBER
P8E	0 +145.367		
	0 +175.269	29.9	1
OFF-P1	0 +180.214		
	0 +205.172	29.9	1
OFF-P2	0 +228.442		
	0 +235.074	29.9	1
	0 +264.976	29.9	1
OFF-A2	0 +268.976		
SUM			4

CROSS SECTION S=1:200



PROJECT TITLE ;
THE PROJECT FOR CONSTRUCTION OF
AJILCHIN FLY-OVER IN ULAANBAATAR CITY

DESIGNED BY ;
CTI Engineering International Co., Ltd.
Chodai Co., Ltd.
International Development Institute

APPROVED BY ;

DRAWING TITLE ;
ARRANGEMENT OF STREET LIGHTING

SCALE
S=1:3000

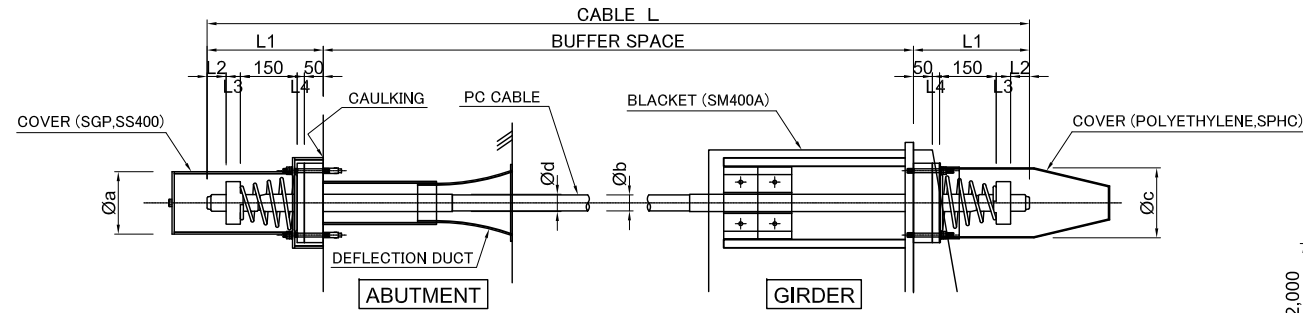
DRAWING No.
062

ACCESSARY

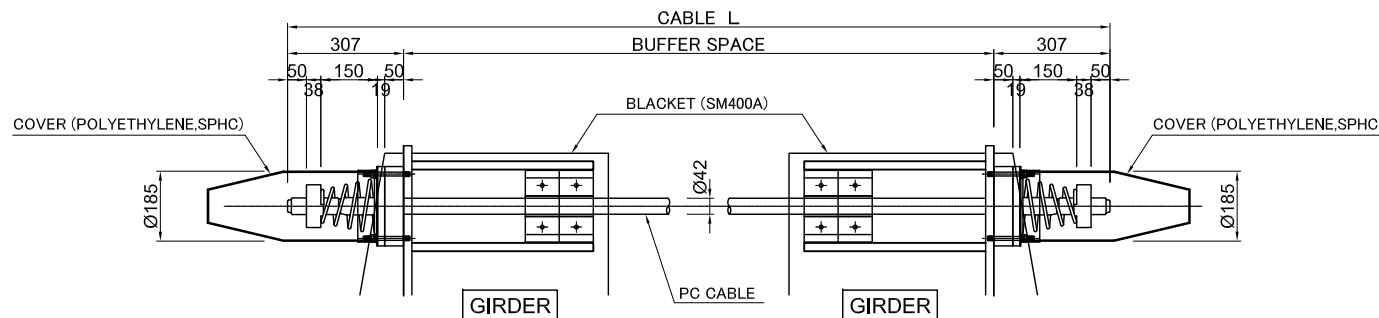
UNSEATING PREVENTION DEVICE

PROFILE S=1:10

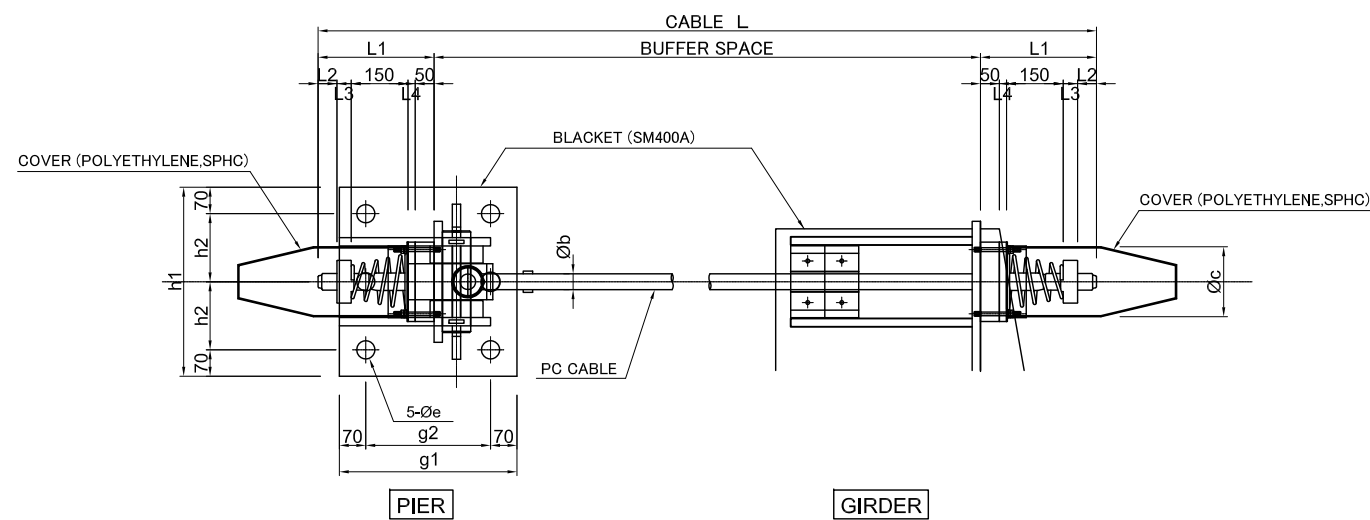
TYPE A



TYPE B



TYPE C



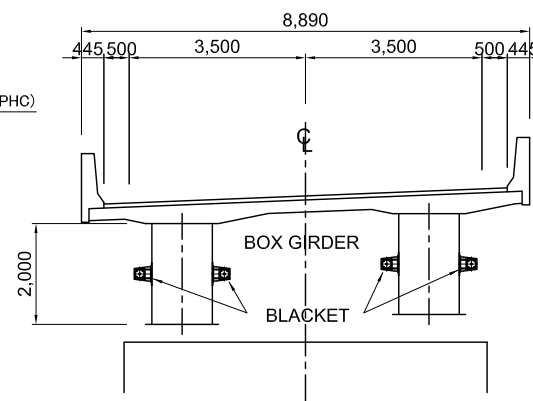
LIST OF PC CABLE MEASUREMENTS

	TYPE	L1	L2	L3	L4	Øa	Øb	Øc	Ød
390kN	C1	302	50	33	19	139.8	34	145	34
570kN	B, C2	307	50	38	19	165.2	42	185	42
1000kN	A1, C3	394	125	50	19	216.3	60	205	76
1300kN	A3	418	130	60	28	241.8	76	240	89
1500kN	A2	453	155	70	28	267.4	76	260	89

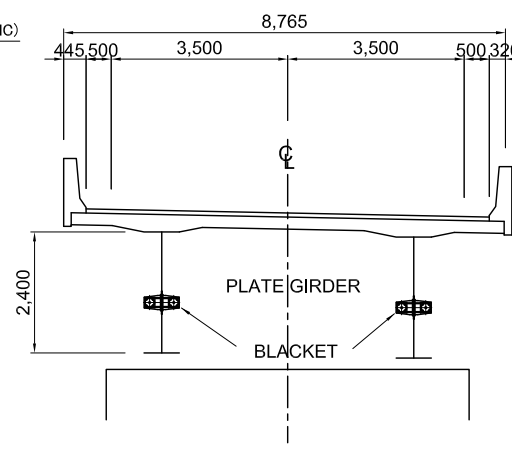
	g1	g2	h1	h2	h3	Øe
390kN	410	270	540	200	150	42
570kN	470	330	500	180	175	48
1000kN	550	370	600	210	210	56

CROSS SECTION S=1:150

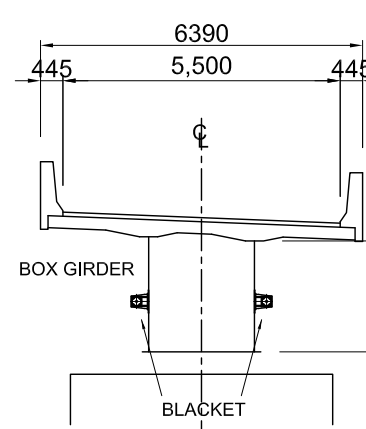
WEST, EAST
(A1,P4,P8)



(P11,A2)



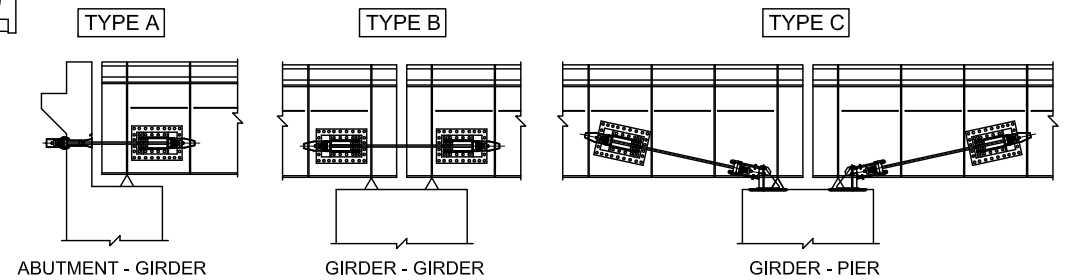
ONRAMP, OFFRAMP



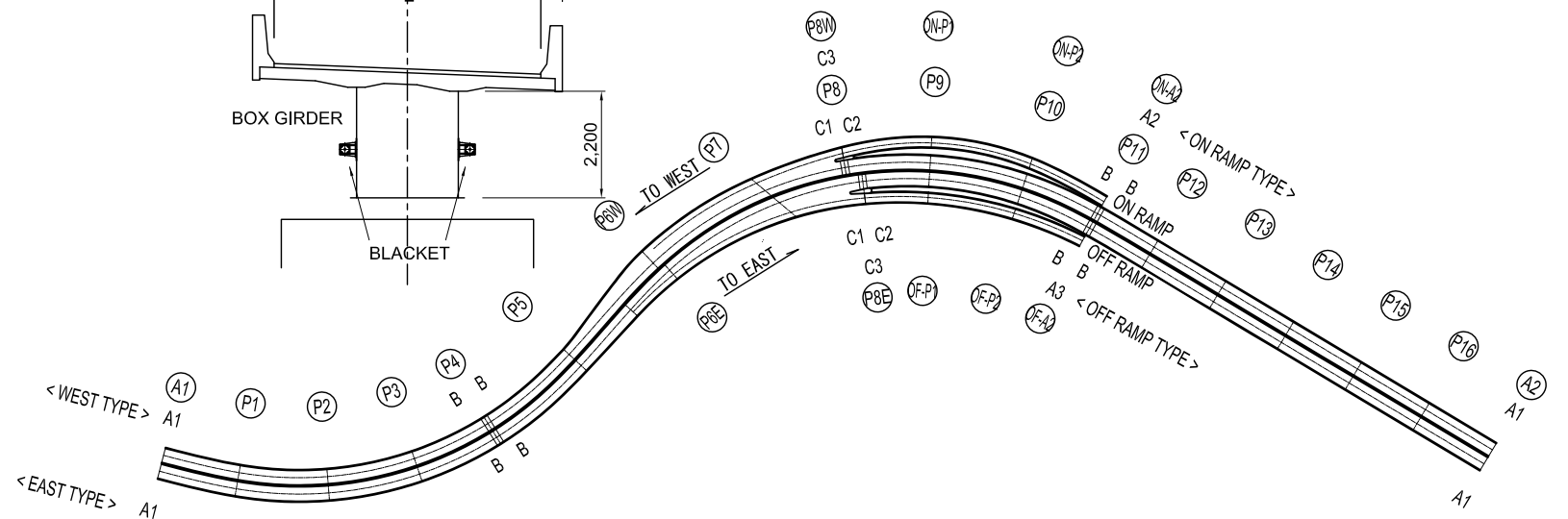
WEIGHT

			Rd (kN)	1.5Rd (kN)	Pa (kN)	DESIGN FORCE (kN)	CABLE (kN)	SET	TYPE	WEIGHT (kg)
A1-P4	WEST	A1	1948.8	2923	-	2923	1000	4	A1	1,713
	EAST	A1	2090.3	3135	1887	1887	570	4	B	2,560
P4-P8	WEST	P4	1972.3	2958	-	2958	1000	4	A1	1,713
	EAST	P4	2191.1	3287	1887	1887	570	4	B	2,560
P8-P11	WEST	P8W	3042.1	4563	1887	1887	570	4	B	2,560
	EAST	P8E	3483.5	5225	1334	1334	390	6	C1	2,523
P11-A2	WEST	P11	3356.9	5035	1887	1887	570	4	B	2,560
	EAST	P11	3533.6	5300	1334	1334	390	6	C1	2,523
ON RAMP	WEST	P8W	2187.4	3281	1334	1334	570	4	C2	2,036
	EAST	P11	2008.8	3013	1529	1529	570	4	B	2,560
OFF RAMP	WEST	P8E	1579.9	2370	1334	1334	570	4	C2	2,036
	EAST	P11	1890.7	2836	1529	1529	570	4	B	2,560
ON-A2	WEST	A2	1958.8	2938	-	2938	1000	4	A1	1,713
	EAST	A2	1549.9	2325	1529	1529	570	4	B	2,560
OFF-A2	WEST	P8W	1791.1	2687	1334	1334	1000	2	C3	1,256
	EAST	ON-A2	1629.3	2444	-	2444	1500	2	A2	1,410
OFF RAMP	WEST	P8E	1155.3	1733	1334	1334	1000	2	C3	1,256
	EAST	OFF-A2	1390.5	2086	-	2086	1300	2	A3	1,092

DETAIL



LOCATION



PROJECT TITLE ;
THE PROJECT FOR CONSTRUCTION OF
AJILCHIN FLY-OVER IN ULAANBAATAR CITY

DESIGNED BY ;
CTI Engineering International Co., Ltd.
Chodai Co., Ltd.
International Development Institute

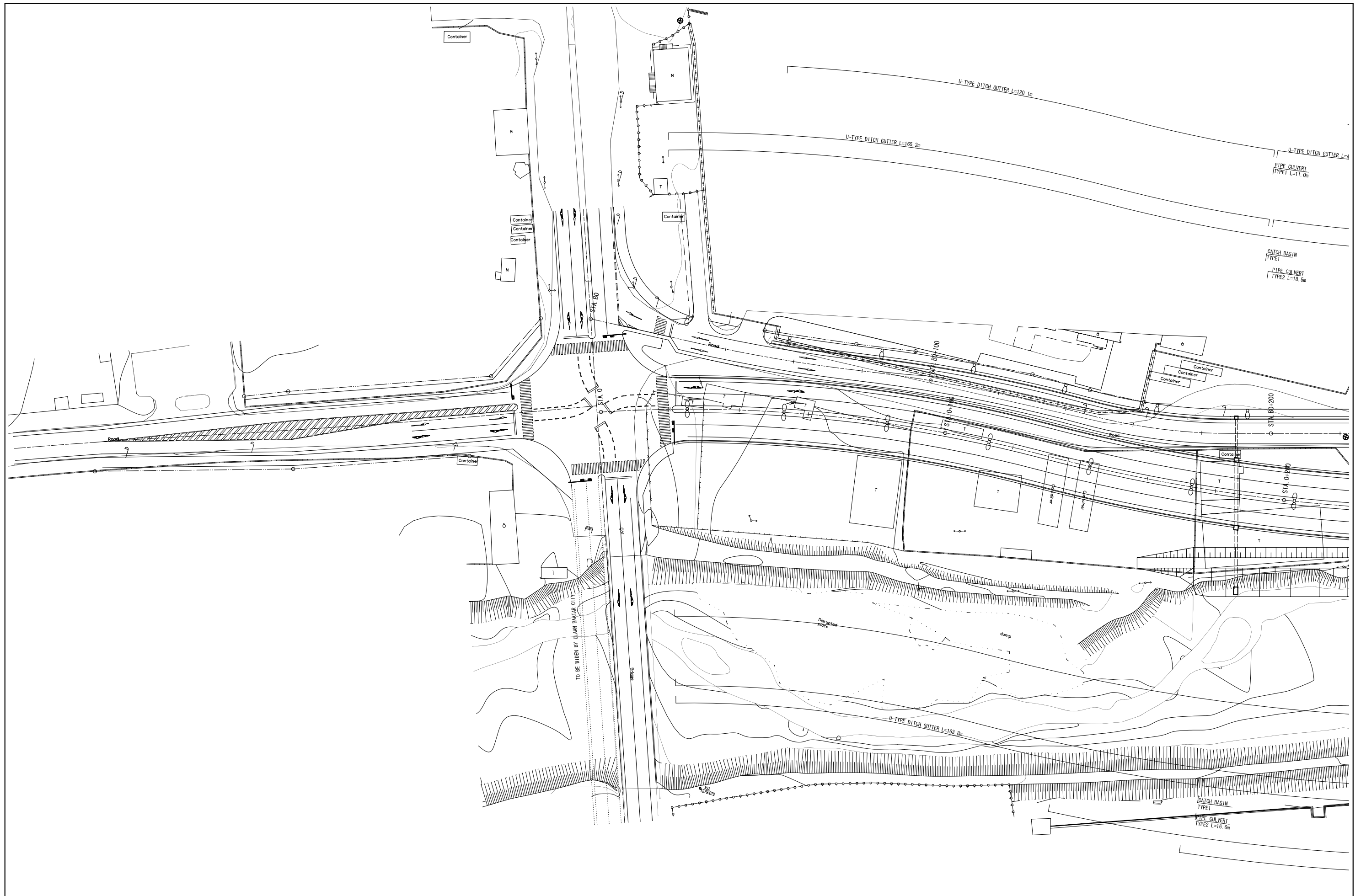
APPROVED BY ;

DRAWING TITLE ;
UNSEATING PREVENTION DEVICE

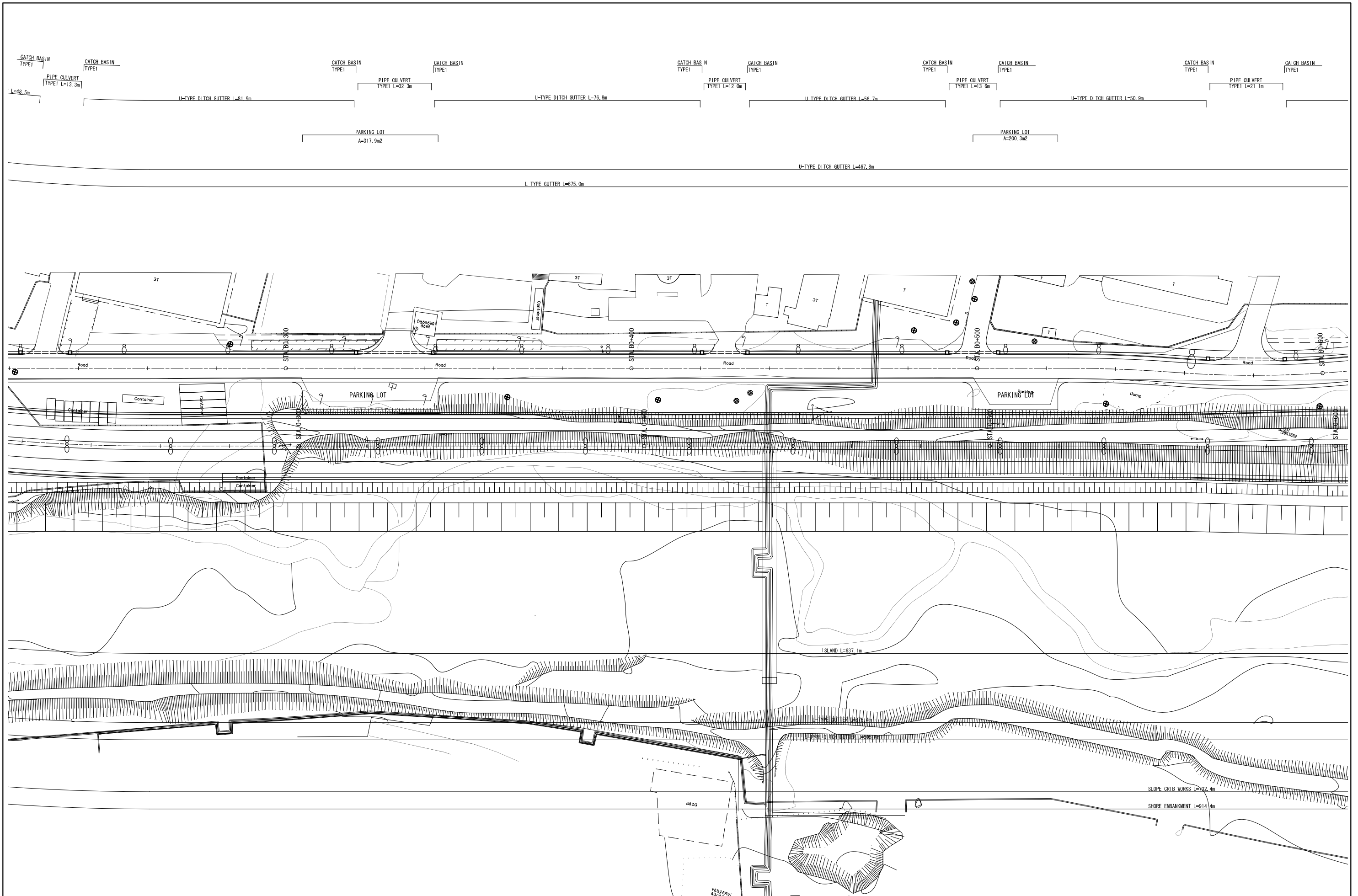
SCALE
S=1:10

DRAWING No.
063

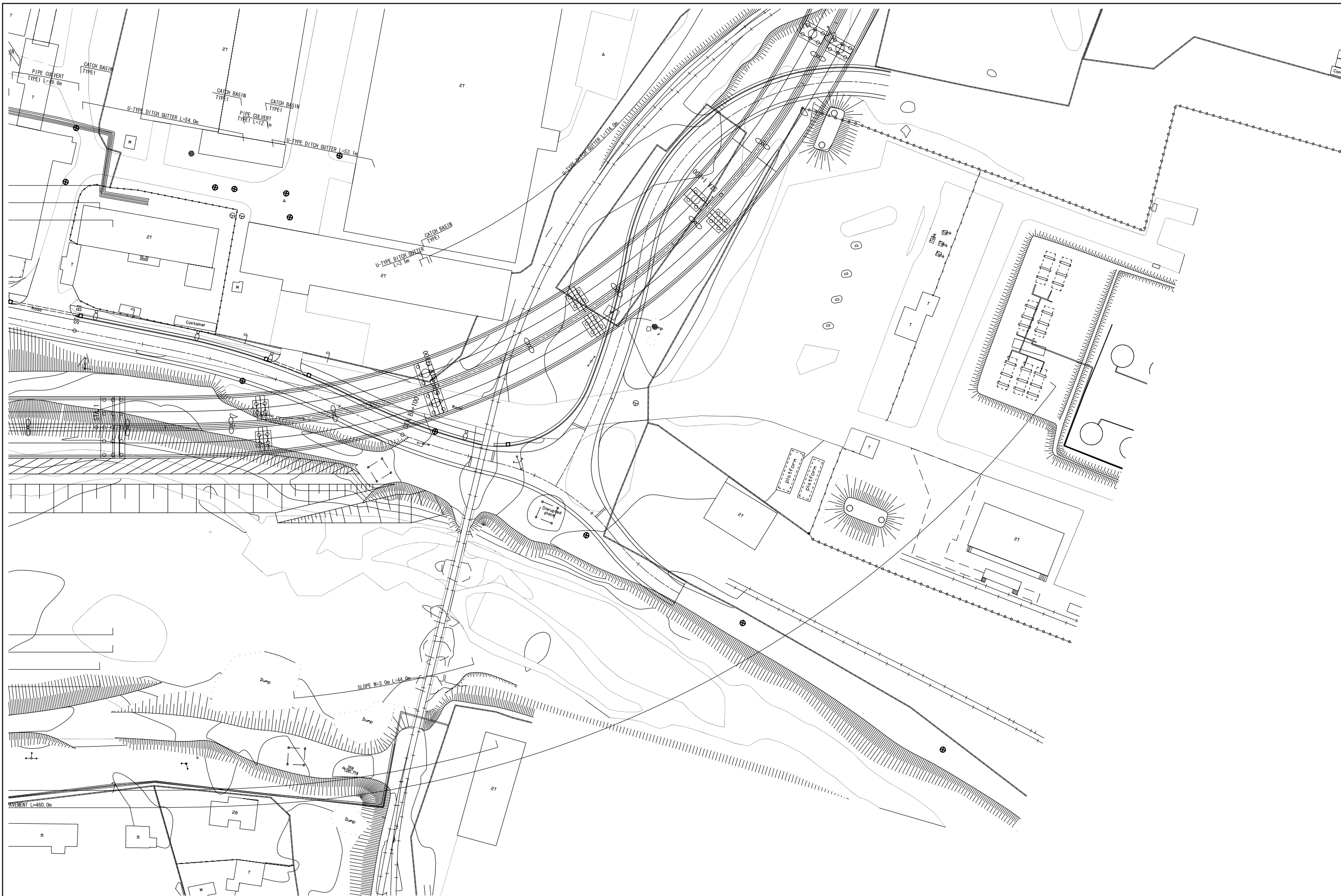
ACCESSARY



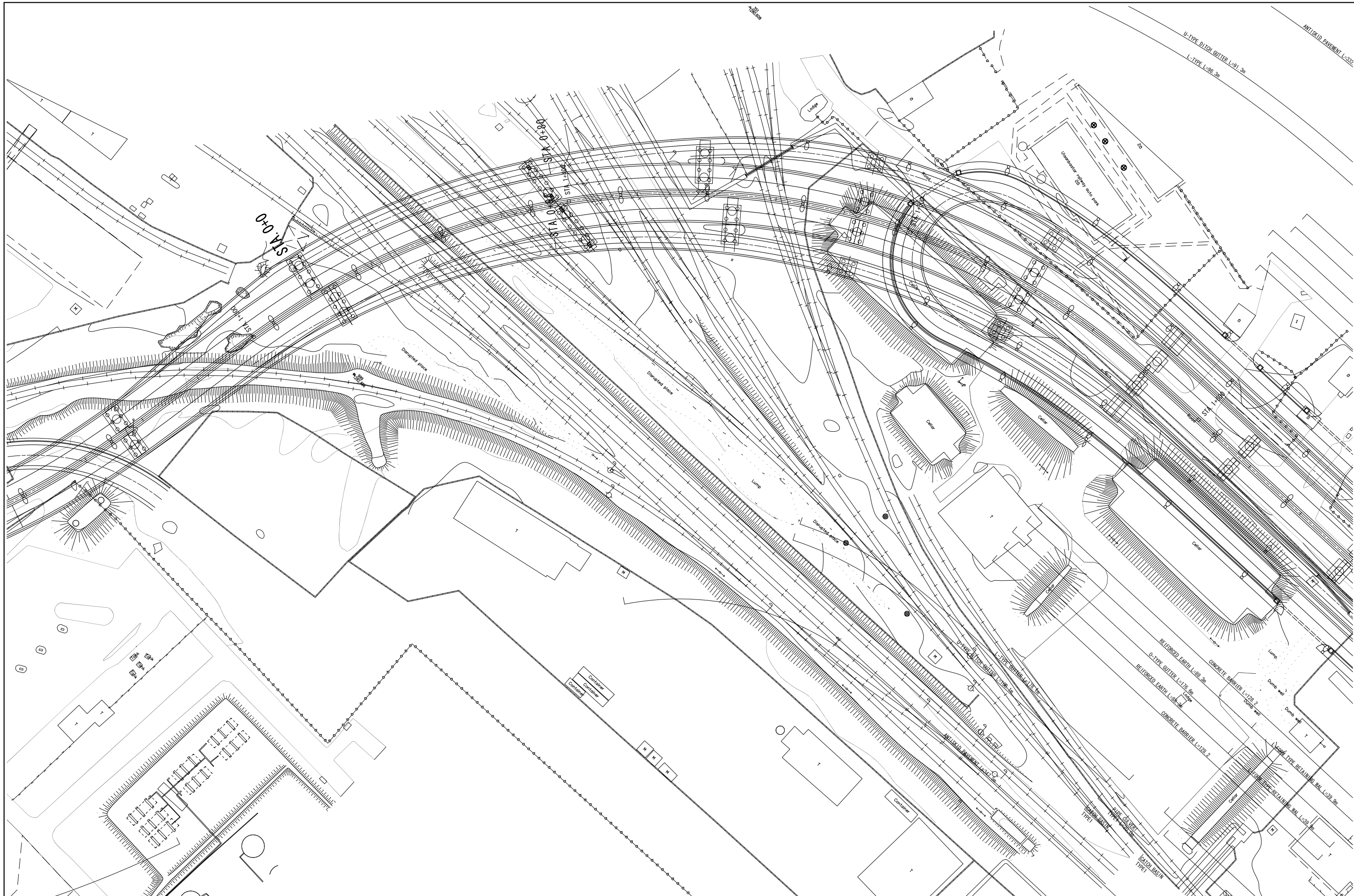
PROJECT TITLE ; THE PROJECT FOR CONSTRUCTION OF AJILCHIN FLY-OVER IN ULAANBAATAR CITY	DESIGNED BY ; CTI Engineering International Co., Ltd. Chodai Co., Ltd. International Development Institute	APPROVED BY ;	DRAWING TITLE ; PLAN(1)	SCALE S=1:1000	DRAWING No. 064	HIGHWAY
---	---	---------------	----------------------------	-------------------	--------------------	---------



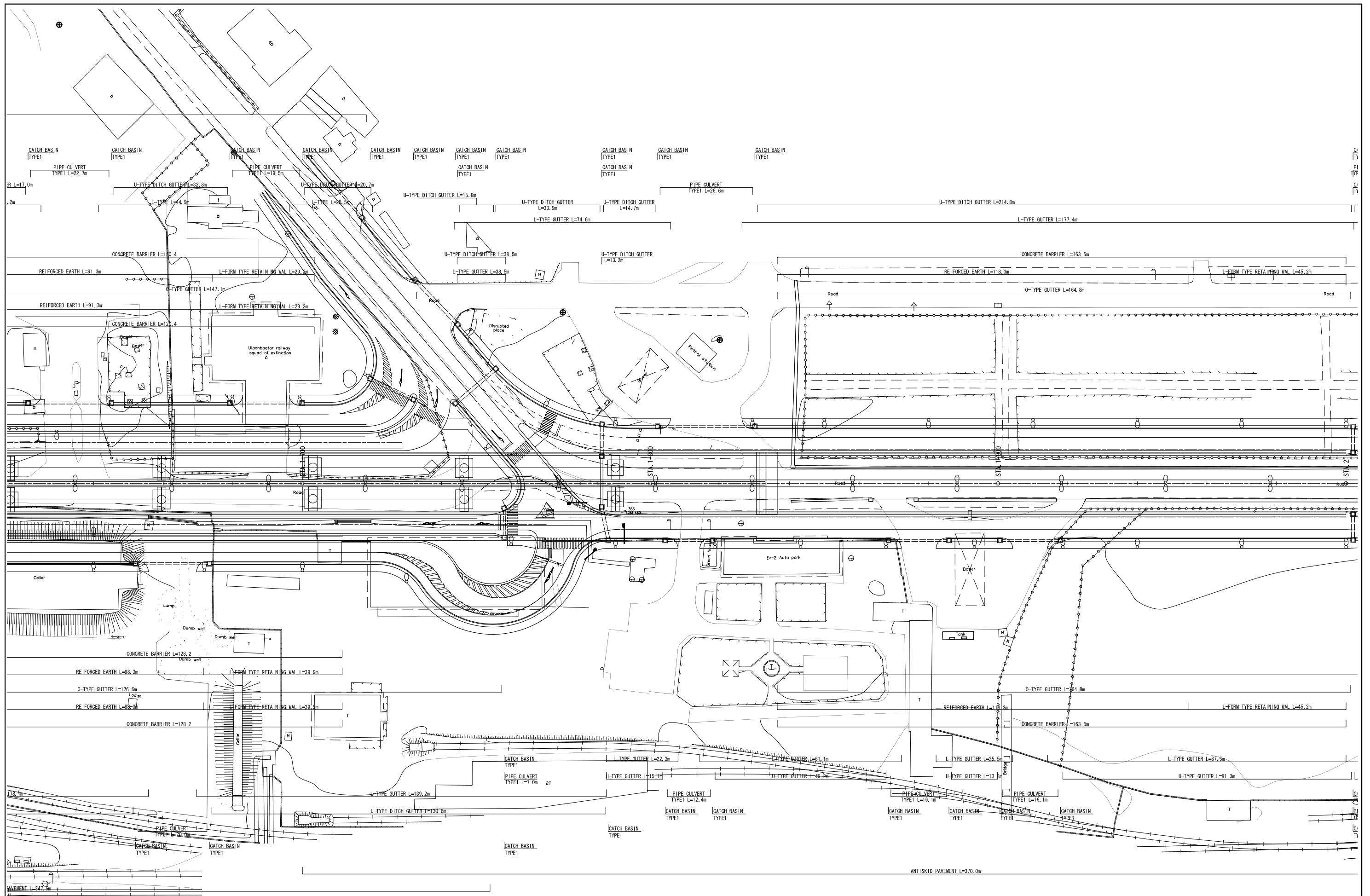
PROJECT TITLE ; THE PROJECT FOR CONSTRUCTION OF AJILCHIN FLY-OVER IN ULAANBAATAR CITY	DESIGNED BY ; CTI Engineering International Co., Ltd. Chodai Co., Ltd. International Development Institute	APPROVED BY ;	DRAWING TITLE ; PLAN(2)	SCALE S=1:1000	DRAWING No. 065	HIGHWAY
---	---	---------------	----------------------------	-------------------	--------------------	---------



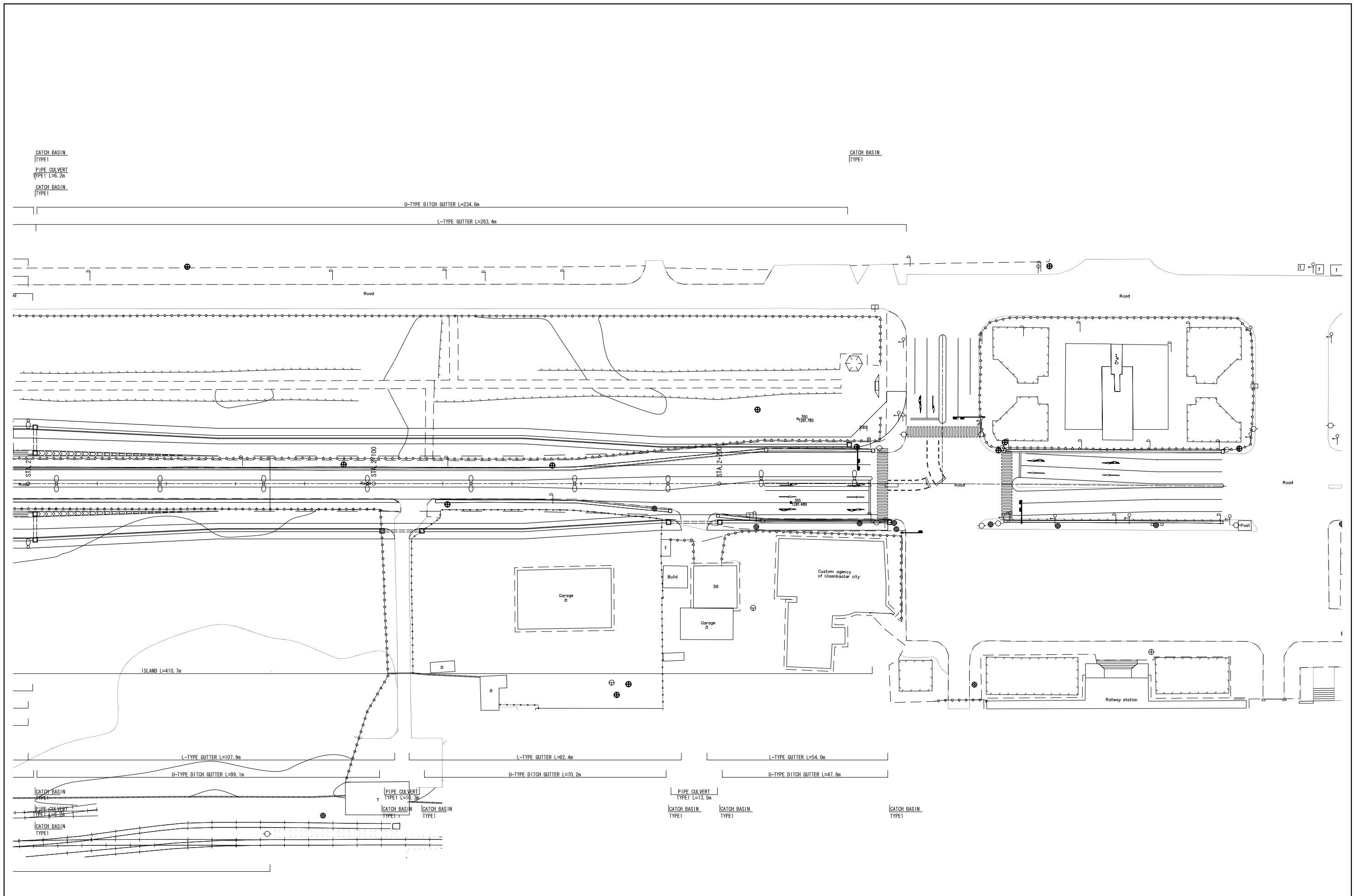
PROJECT TITLE ; THE PROJECT FOR CONSTRUCTION OF AJILCHIN FLY-OVER IN ULAANBAATAR CITY	DESIGNED BY ; CTI Engineering International Co., Ltd. Chodai Co., Ltd. International Development Institute	APPROVED BY ;	DRAWING TITLE ; PLAN(4)	SCALE S=1:1000	DRAWING No. 067	HIGHWAY
---	---	---------------	----------------------------	-------------------	--------------------	---------



<p>PROJECT TITLE ; THE PROJECT FOR CONSTRUCTION OF AJILCHIN FLY-OVER IN ULAANBAATAR CITY</p>	<p>DESIGNED BY ; CTI Engineering International Co., Ltd. Chodai Co., Ltd. International Development Institute</p>	<p>APPROVED BY ;</p>	<p>DRAWING TITLE ; PLAN(5)</p>	<p>SCALE S=1:1000</p>	<p>DRAWING No. 068 HIGHWAY</p>
---	---	----------------------	--	-----------------------------------	---



<p>PROJECT TITLE ; THE PROJECT FOR CONSTRUCTION OF AJILCHIN FLY-OVER IN ULAANBAATAR CITY</p>	<p>DESIGNED BY ; CTI Engineering International Co., Ltd. Chodai Co., Ltd. International Development Institute</p>	<p>APPROVED BY ;</p>	<p>DRAWING TITLE ; PLAN(6)</p>	<p>SCALE S=1:1000</p>	<p>DRAWING No. 069</p>	<p>HIGHWAY</p>
--	---	----------------------	--	-----------------------------------	------------------------------------	----------------



PROJECT TITLE ;
 THE PROJECT FOR CONSTRUCTION OF
 AJILCHIN FLY-OVER IN ULAANBAATAR CITY

DESIGNED BY ;
 CTI Engineering International Co., Ltd.
 Chodai Co., Ltd.
 International Development Institute

APPROVED BY ;

DRAWING TITLE ;
 PLAN(7)

SCALE
 S=1:1000

DRAWING No.
 070

HIGHWAY