

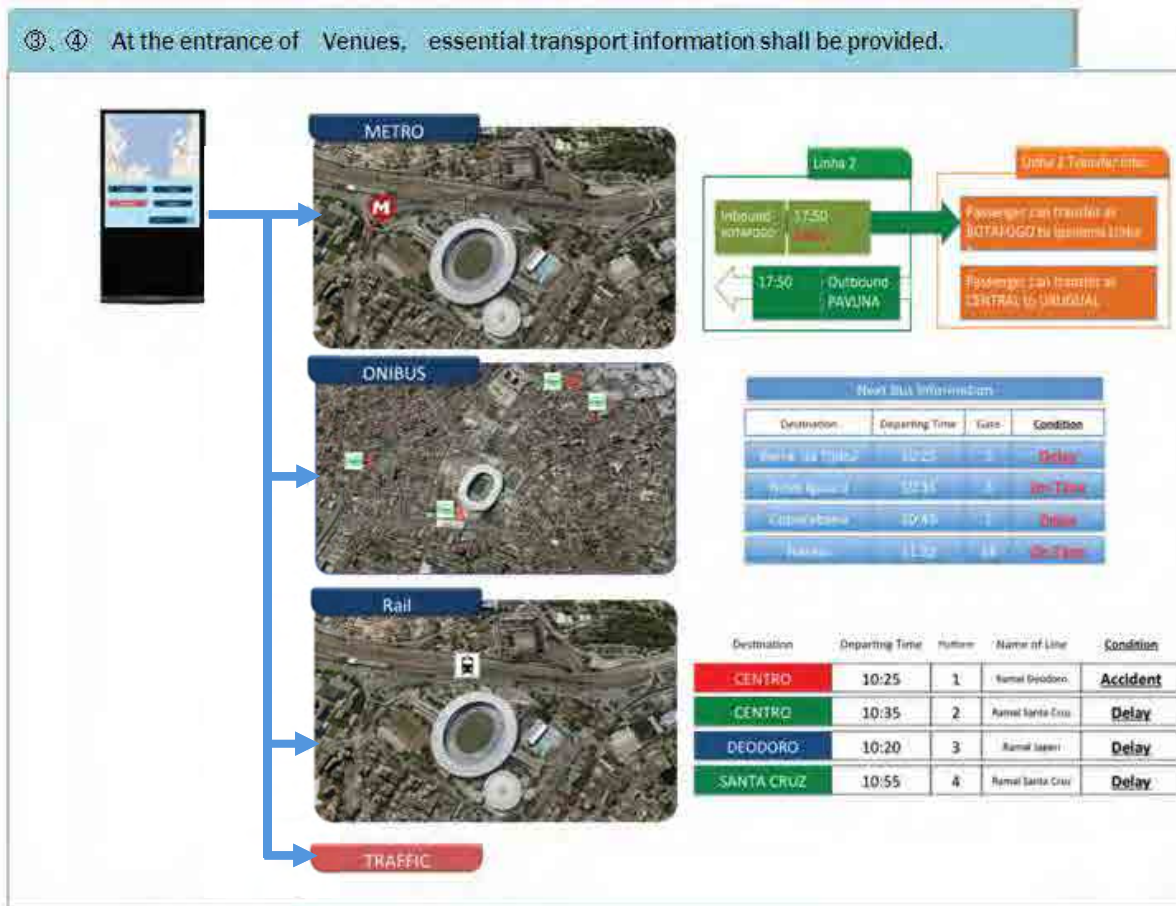
## III. Project Package 1 Sample Contents



ITS Center can provide a route information based upon the processed real-time congestion data. Drivers can decide the fastest way to their destination.

### ② Information Provision North and South Line

## III. Project Package 1 Sample Contents



③④ Transit and Event Information Provision at Venues

## III. Project Package 1 Sample Contents



- ⑤⑥ Transit and Traffic Information Provision at Airport
- ⑦ Ferry and Transit Information Provision at Sea port
- ⑧ Transit information Provision at Terminal
- ⑨ Bus Location Information Provision,
- ⑩ Sightseeing Place Information Provision
- ⑪ BRT and Transit Information Provision

# III. Project Package 1 Sample Contents

## Digital Broadcasting Base Information Provision



## III. Project Package 1 Sample Contents

Web Base Information Provision

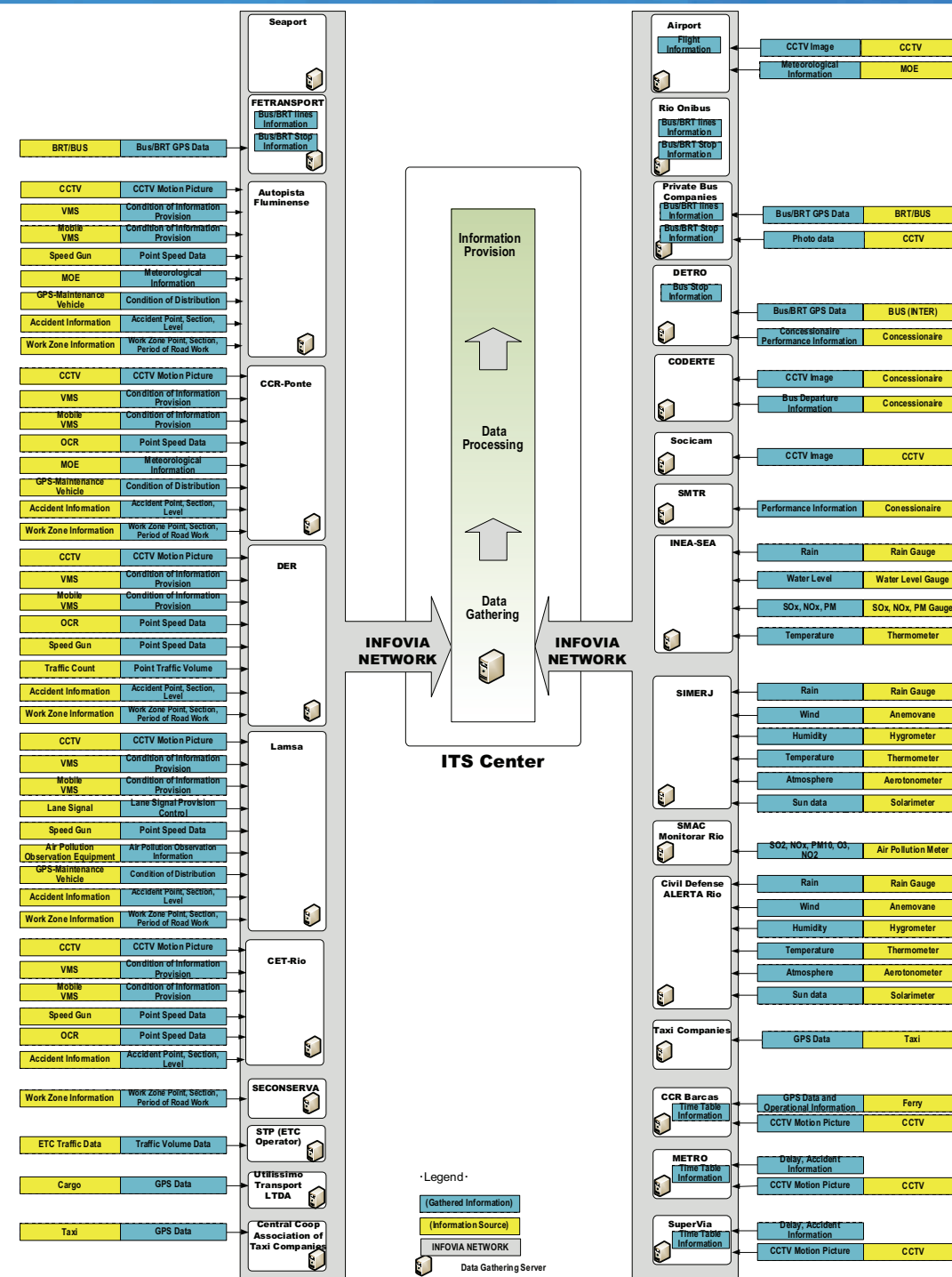
Smart Phone, Tablet Base Information Provision

All gathered information by ITS Center should be disseminated via Web, Mobile devices, and Digital Broadcasting compatible devices



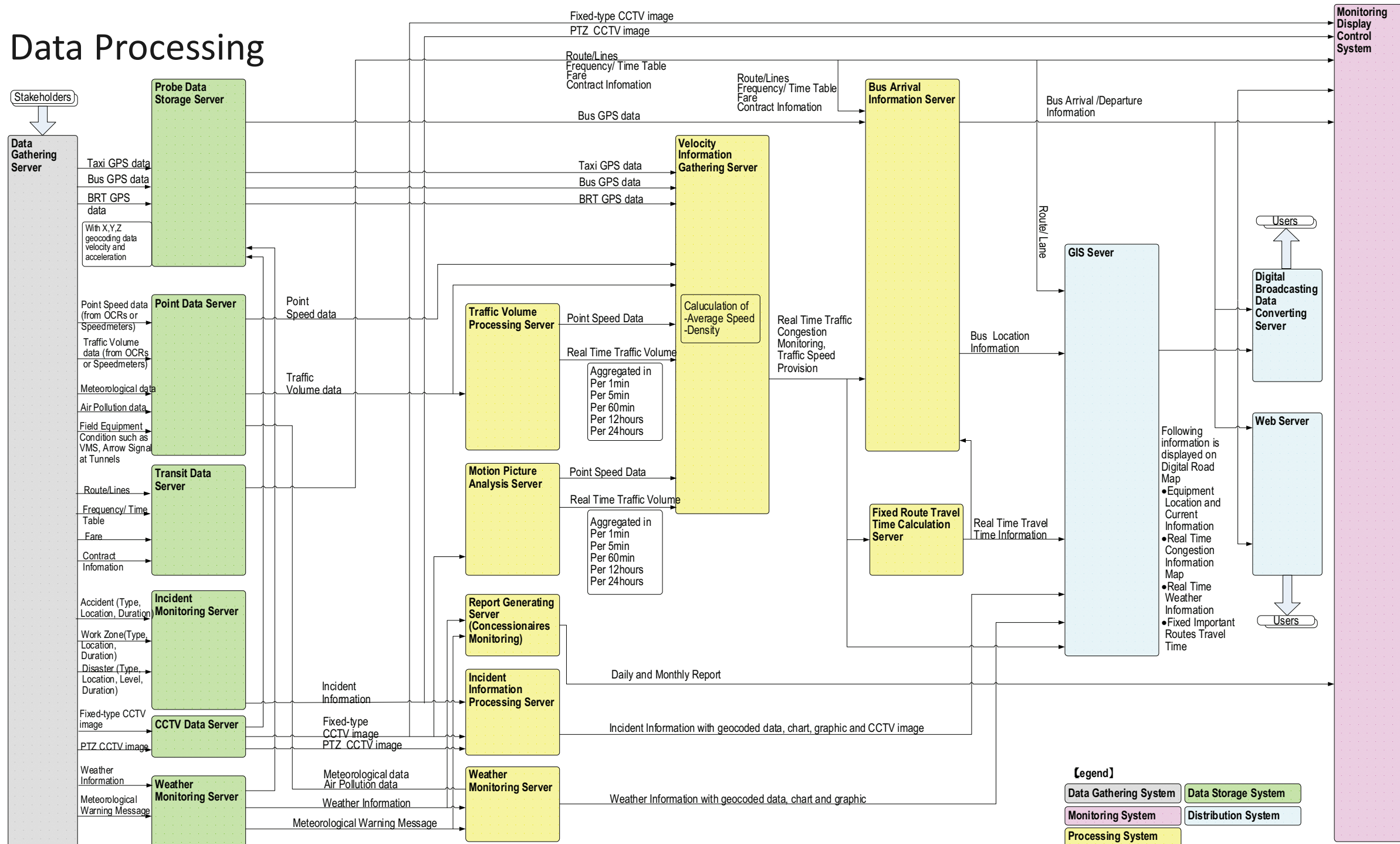
# III. Project Package 1 Detailed Data Flow

## Data Gathering



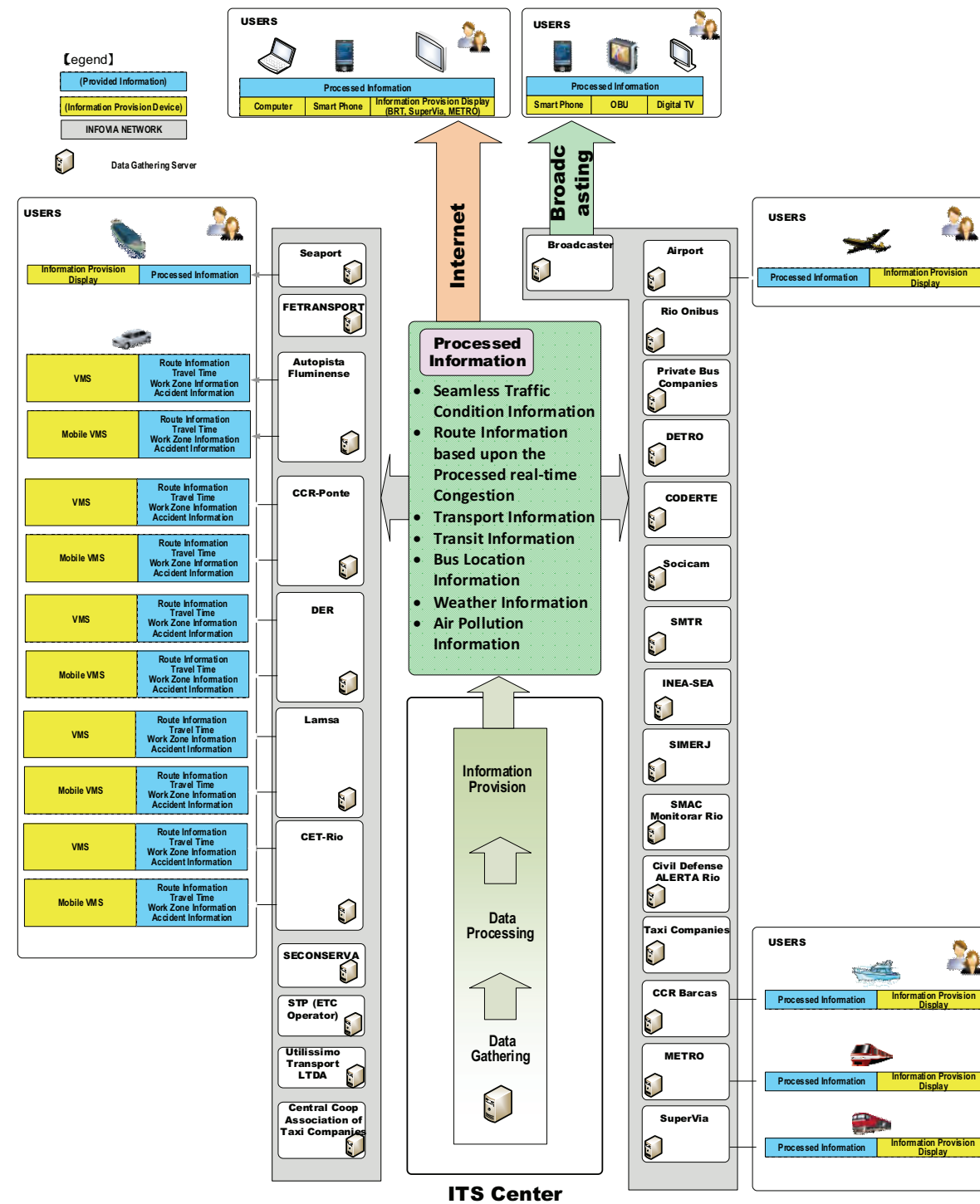
# III. Project Package 1 Detailed Data Flow

## Data Processing



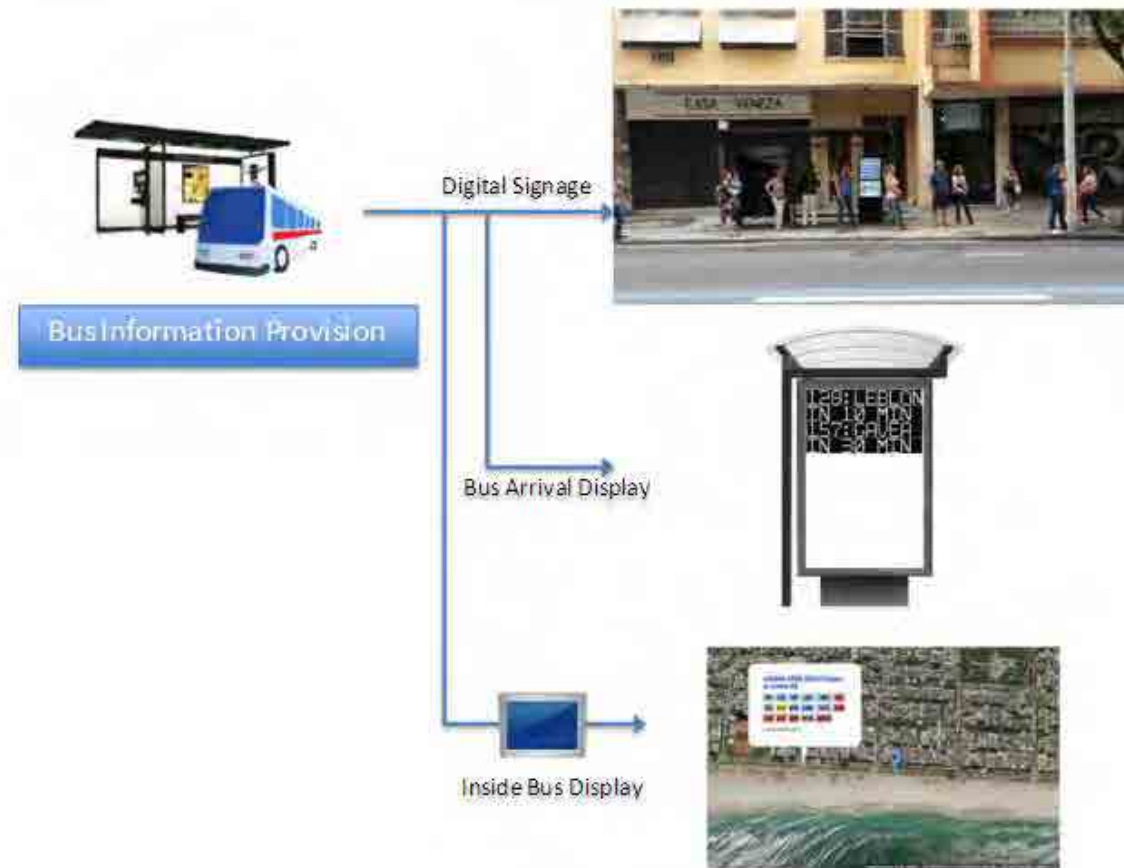
# III. Project Package 1 Detailed Data Flow

## Information Provision



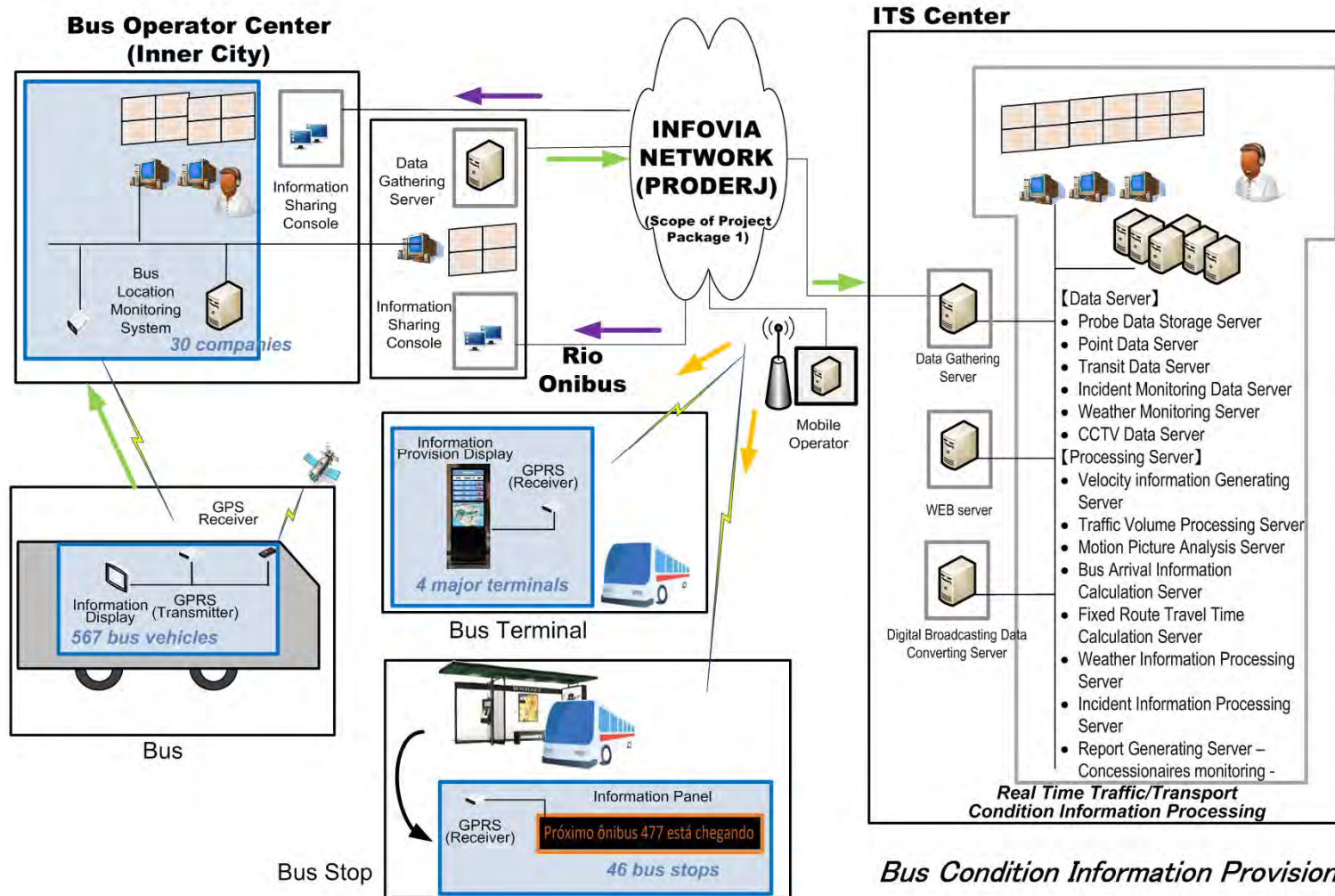


## III. Project Package 2 Sample Contents



Bus Information Provision System

# III. Project Package 2 Detailed Data Flow



# III. Project Package 3 Sample Contents

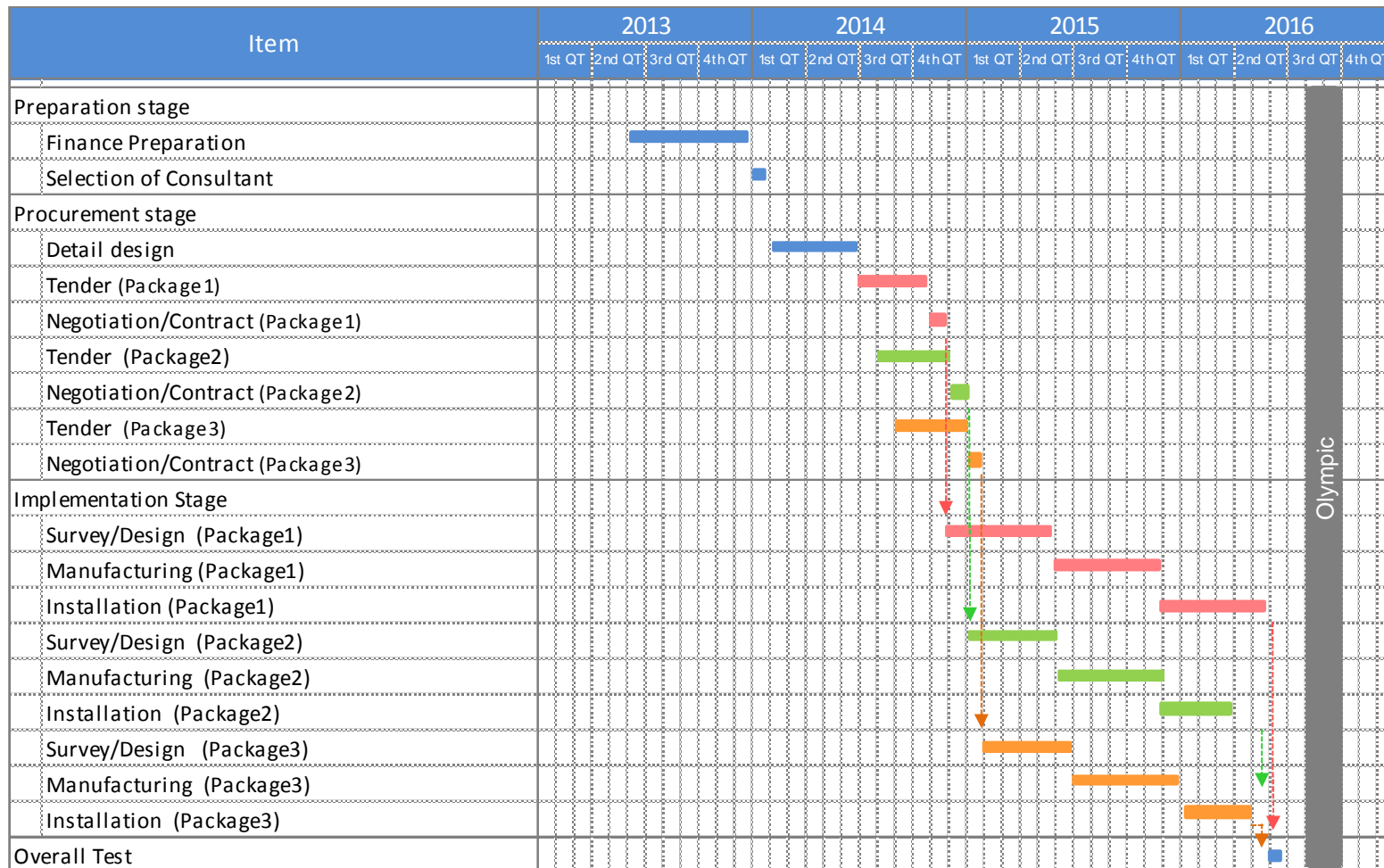


Expansion of Adaptive Signal Control



Installing and Control more Variable Message Signboard

# IV. Implementation Schedule



Olympic

# Appendix -Related Stakeholders-

## + Project Package 1/4

Stakeholders		Gathered and Collected Data/ Information by each stakeholders
Road Related Agencies/Private Companies	ANTT	-Federal concession road traffic /administrative information
	DNIT	-Federal road traffic /administrative Information
	DER-RJ	-State road traffic /administrative information
	CET-RIO	-Municipality road traffic /administrative information
	CCR Ponte	-Niteroi bridge traffic/administrative information
	Autopista Fluminense	-Autopista Fluminense road traffic /administrative information
	LAMSA	-LAMSA road traffic /administrative information
	SECONSERVA	-Work zone info with longitude and latitude
Transit/Transport Related Agencies	DETRO	-Interstate, inter municipalities bus operating information and GPS based positioning information (will be prepared by DETRO and each Bus companies)
	CODERTE	-Bus Terminal Information -Bus Arrival Information
	Novo Rio (Socicam)	-Bus Terminal Information -Bus Arrival Information
	COR	-Weather Information, municipality road traffic /administrative information

# Appendix -Related Stakeholders-

## + Project Package 1 – 2/4

Stakeholders		Gathered and Collected Data/ Information by each stakeholders
Transit/Transport Related Agencies - cont	SMTR	-Bus operative information from Rio Onibus
	Air Port	-Arrival / Departure information from INFRAERO
Transit/Transport Operator	Rio Onibus	-Bus/BRT Operational Information -Bus/BRT GPS Data -Bus frequency information
	FETRANSPOR	-Bus/BRT stop location information -Bus/BRT lines information(Bus network information) -Bus frequency information
	Super VIA	-Rail Operational Information -Rail Time Table
	METRO	-METRO Operational Information -METRO Time Table
	CCR Barcas	-Ferry Operational Information -Ferry Time Table

# Appendix -Related Stakeholders-

## + Project Package 1 – 3/4

Stakeholders		Gathered and Collected Data/ Information by each stakeholders
Transit/Transport Operator	Private Bus Companies	-Bus Operational Information -Bus GPS Data -Bus frequency information
	Socicam	-Bus Terminal Operational Information -Bus Arrival Information
	Central Coop	-Taxi Association
	Taxi Companies Radio Taxi, Chile Taxi, Coopamar	-Taxi GPS data (via Auto Cab, Smart Sys)
Air Operator	INFRAERO	-Flight Information (Departure, Arrival Delay and Accident) -Meteorological information -CCTV monitoring (Airport, Taxi Parking)
Seaport Administrator		
Freight Operator	Utilissimo Tranportes LTDA	-Freight Operational Information

# Appendix -Related Stakeholders-

## + Project Package 1 – 4/4

Stakeholders		Gathered and Collected Data/ Information by each stakeholders
Public Safety Agencies	Civil Defense-SEDEC	-Emergency Information with longitude and latitude
	SAMU-CBMERJ	
	BOMBEIRO-CBMERJ	
	SESEG	
	SMSDC	
Weather/Air Pollution Monitoring Agency	INEA-SEA,	-Rain and water level data of rivers -Air Pollution data with longitude and latitude
	SIMERJ-SEDEC	-Weather monitoring and rain monitoring data with longitude and latitude
	SMAC	-Air Pollution data with longitude and latitude



# Appendix -Related Stakeholders-

## + Project Package 2

Stakeholders		Gathered and Collected Data/ Information by each stakeholders
Transit/Transport Related Agencies	SMTR/DETRO	Processed information shall be provided via ITS Center
Transit/Transport Operator	FETRANSPOR	Bus operating line data, Bus stop/Terminal geocoding data
	Private Bus Companies	GPS data
	Bus Terminal Operators	Bus departure time table
	Mob TV	Current bus position information provision inside bus
Information Provider	ITS Center	Traffic Information, Estimated bus arrival time information, transfer information etc.