



No 111

Date 19-Jul-12

Equipment of Substation

132kV Disconnecting Switch (123)



No 112

Date 19-Jul-12

Equipment of Substation

132kV Disconnecting Switch (123)



No 113

Date 19-Jul-12

Equipment of Substation

132kV Disconnecting Switch (223)



No 121

Date 19-Jul-12

Equipment of Substation

Air Blast Circuit Breaker



No 122

Date 19-Jul-12

Equipment of Substation

Air Blast Circuit Breaker



No 123

Date 19-Jul-12

Equipment of Substation

Air Blast Circuit Breaker

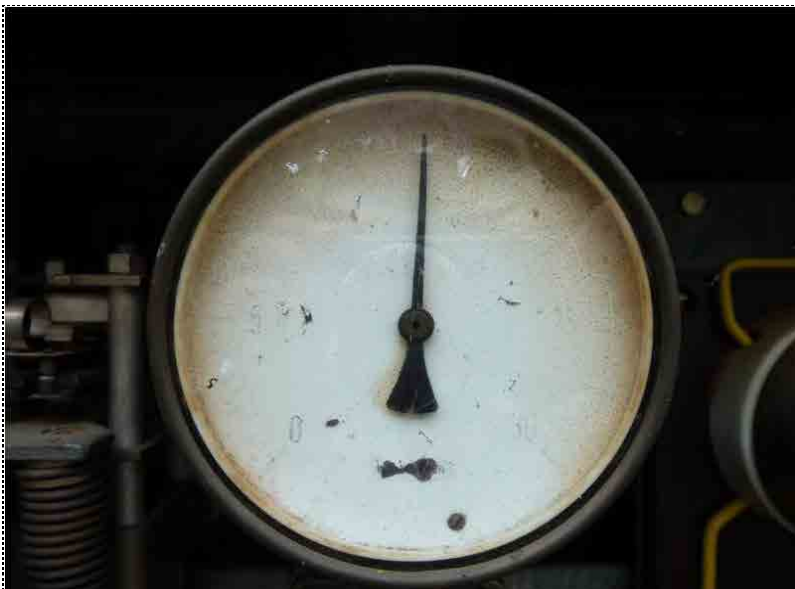


No 124

Date 26-Jul-12

Equipment of Substation

Air Blast Circuit Breaker



No 125

Date 26-Jul-12

Equipment of Substation

Air Blast Circuit Breaker



No 126

Date 26-Jul-12

Equipment of Substation

Air Blast Circuit Breaker



No 131

Date 19-Jul-12

Equipment of Substation

Current Transformer



No 132

Date 19-Jul-12

Equipment of Substation

Current Transformer

Oil level cannot be checked.



No 133

Date 19-Jul-12

Equipment of Substation

Current Transformer

Oil leakage repair



No 134

Date 19-Jul-12

Equipment of Substation

Arrester



No 135

Date 19-Jul-12

Equipment of Substation

Arrester

LA (Phase C) was replaced.



No 136

Date 19-Jul-12

Equipment of Substation

Arrester

Nameplate of phase C



No 1501

Date 25-Jul-12

Equipment of Substation

Main Transformer



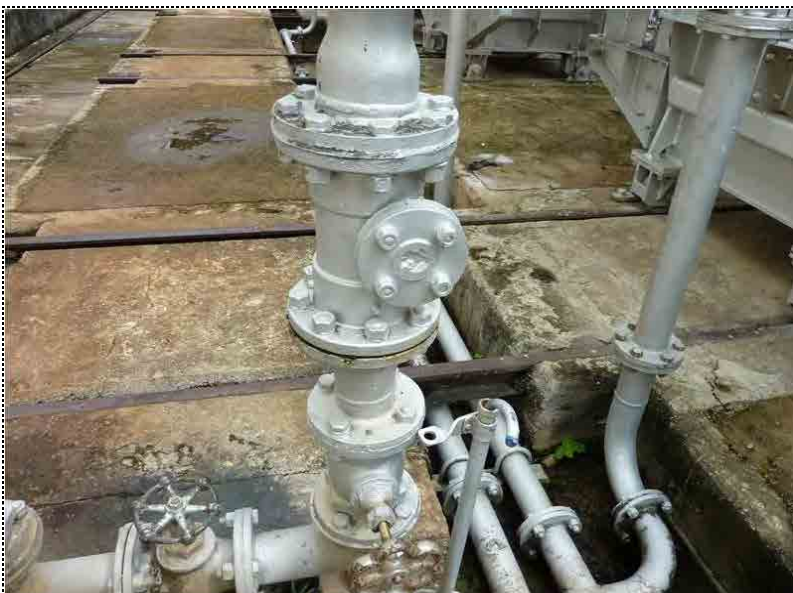
No 1502

Date 25-Jul-12

Equipment of Substation

Main Transformer

Control panel for oil pump.



No 1503

Date 25-Jul-12

Equipment of Substation

Main Transformer

Water flow relay was removed.



No 1504

Date 25-Jul-12

Equipment of Substation

Main Transformer

Phase A

Thermometer cannot be read.



No 1505

Date 25-Jul-12

Equipment of Substation

Main Transformer

Phase A

Oil flow meter cannot be read.



No 1506

Date 25-Jul-12

Equipment of Substation

Main Transformer

Phase A



No 1507

Date 25-Jul-12

Equipment of Substation

Main Transformer

Phase A

The oil level of bushing cannot be checked.



No 1508

Date 25-Jul-12

Equipment of Substation

Main Transformer

Phase A

Oil leakage from oil pump.



No 1509

Date 25-Jul-12

Equipment of Substation

Main Transformer

Phase A

Condition of packing for oil cooler.



No 1510

Date 25-Jul-12

Equipment of Substation

Main Transformer

Phase A



No 1511

Date 25-Jul-12

Equipment of Substation

Main Transformer

Phase B



No 1512

Date 25-Jul-12

Equipment of Substation

Main Transformer

Phase B



No 1513

Date 25-Jul-12

Equipment of Substation

Main Transformer

Phase B



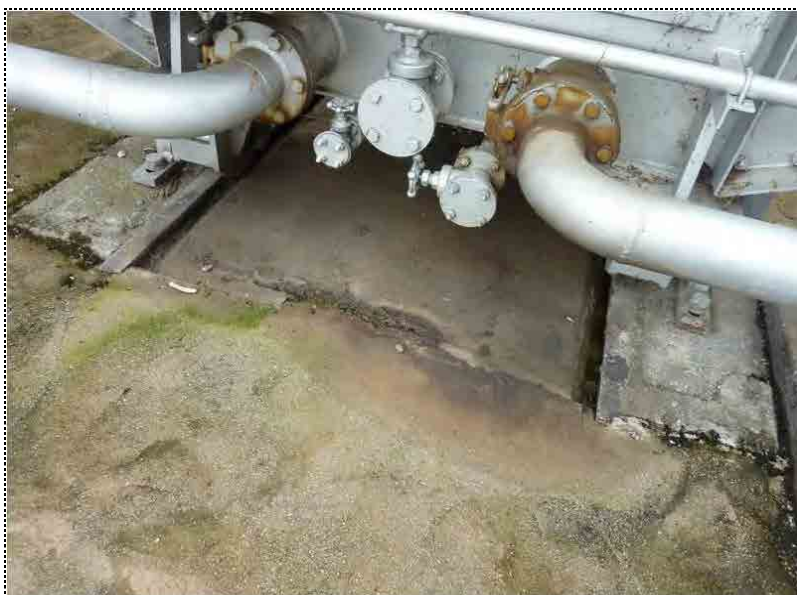
No 1514

Date 25-Jul-12

Equipment of Substation

Main Transformer

Phase B



No 1515

Date 25-Jul-12

Equipment of Substation

Main Transformer

Phase B



No 1516

Date 25-Jul-12

Equipment of Substation

Main Transformer

Phase B



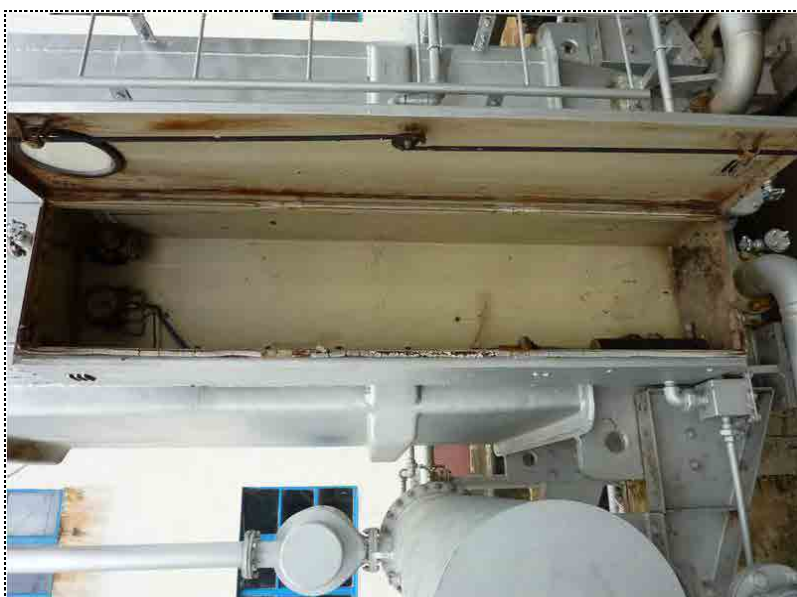
No 1517

Date 25-Jul-12

Equipment of Substation

Main Transformer

Phase B



No 1518

Date 25-Jul-12

Equipment of Substation

Main Transformer

Phase B



No 1519

Date 25-Jul-12

Equipment of Substation

Main Transformer

Phase C



No 1520

Date 25-Jul-12

Equipment of Substation

Main Transformer

Phase C



No 1521

Date 25-Jul-12

Equipment of Substation

Main Transformer

Phase C



No 1522

Date 25-Jul-12

Equipment of Substation

Main Transformer

Phase C



No 1523

Date 25-Jul-12

Equipment of Substation

Main Transformer

Phase C



No 1524

Date 25-Jul-12

Equipment of Substation

Main Transformer

Phase C



No 1525

Date 25-Jul-12

Equipment of Substation

Main Transformer

Phase C



No 1526

Date 25-Jul-12

Equipment of Substation

Main Transformer

Phase C



No 1527

Date 25-Jul-12

Equipment of Substation

Main Transformer

Phase C



No 1528

Date 25-Jul-12

Equipment of Substation

Main Transformer

Phase C

N2-SEAL equipment was removed.

Empty lines for additional notes.



写真

No 1529

Date 25-Jul-12

Equipment of Substation

Empty lines for additional notes.



写真

No 1530

Date 25-Jul-12

Equipment of Substation

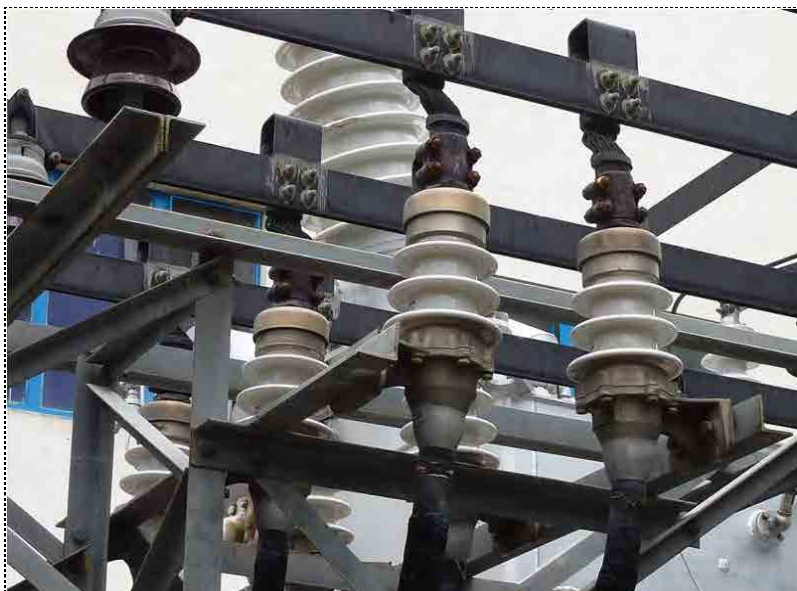
Empty lines for additional notes.



No 161

Date 19-Jul-12

11kV BUS & cable (outside)



No 162

Date 19-Jul-12

11kV BUS & cable (outside)

Cable head



No 163

Date 19-Jul-12

11kV BUS & cable (outside)

Damaged cables



No 164

Date 19-Jul-12

11kV BUS & cable (outside)



No 165

Date 19-Jul-12

11kV BUS & cable (outside)



No 166

Date 19-Jul-12

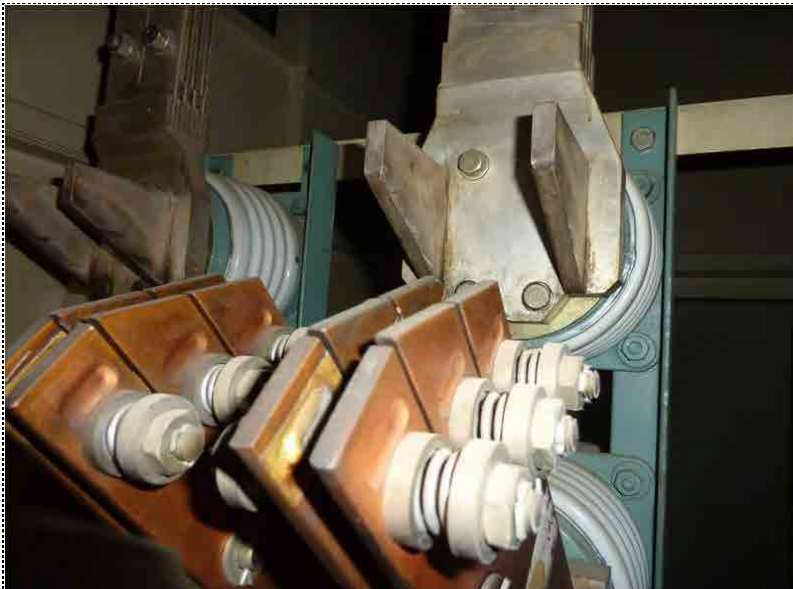
11kV BUS & cable (outside)



No 211

Date 25-Jul-12

Outgoing panel



No 212

Date 25-Jul-12

Outgoing panel



No 213

Date 25-Jul-12

Outgoing panel



No 214

Date 25-Jul-12

Outgoing panel



No 215

Date 25-Jul-12

Outgoing panel



No 216

Date 25-Jul-12

Outgoing panel



No 221

Date 25-Jul-12

Surge Absorber panel



No 222

Date 25-Jul-12

Surge Absorber panel



No 223

Date 25-Jul-12

Surge Absorber panel



No 224

Date 25-Jul-12

Surge Absorber panel



No 225

Date 25-Jul-12

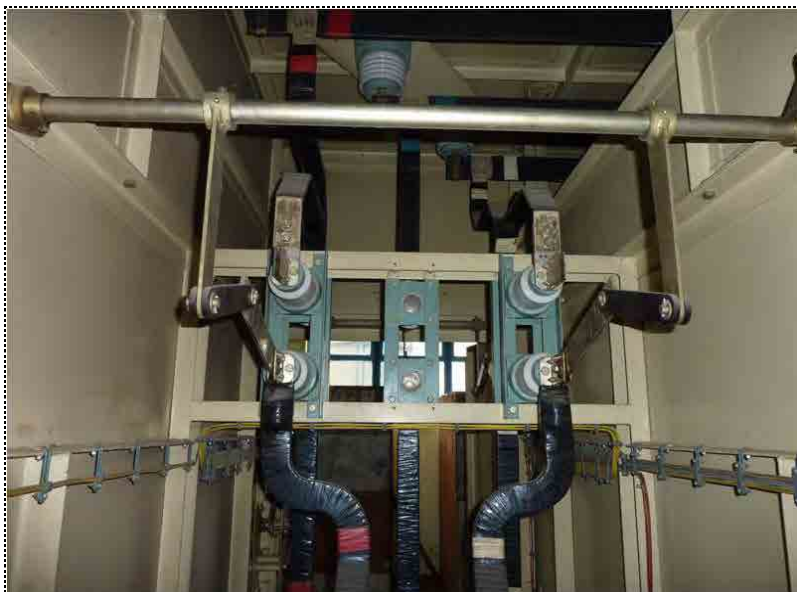
Surge Absorber panel



No 226

Date 25-Jul-12

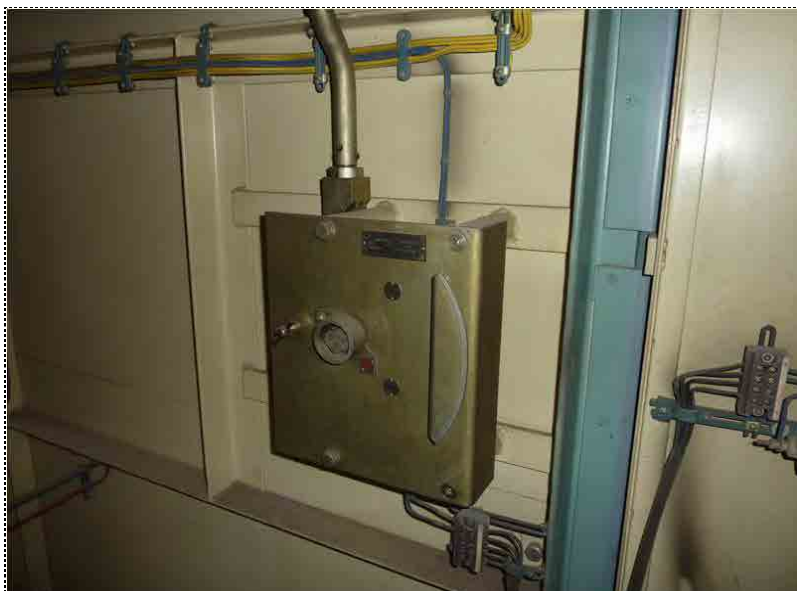
Surge Absorber panel



No 227

Date 25-Jul-12

Surge Absorber panel



No 228

Date 25-Jul-12

Surge Absorber panel



No 229

Date 25-Jul-12

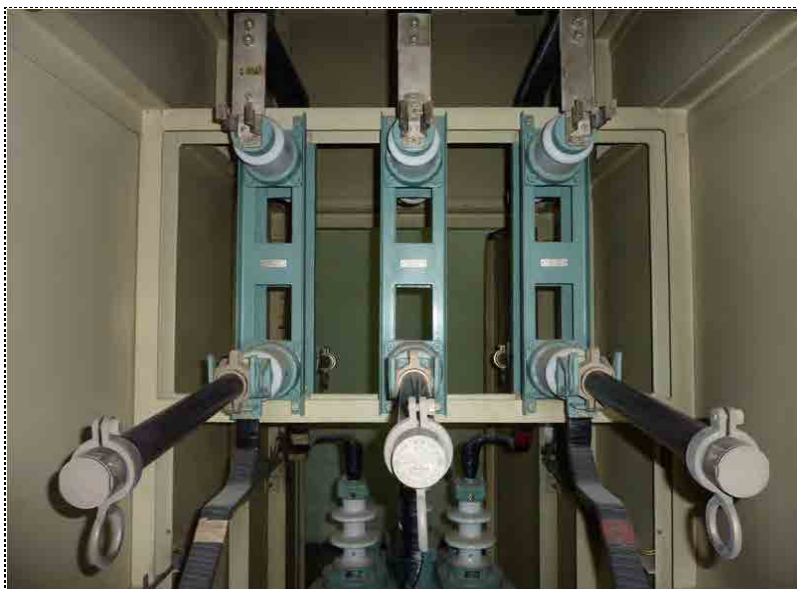
Surge Absorber panel



No 231

Date 25-Jul-12

Voltage Transformer panel



No 232

Date 25-Jul-12

Voltage Transformer panel



No 233

Date 25-Jul-12

Voltage Transformer panel



No 234

Date 25-Jul-12

Voltage Transformer panel



No 235

Date 25-Jul-12

Voltage Transformer panel



No 236

Date 25-Jul-12

Voltage Transformer panel



No 241

Date 25-Jul-12

Incoming panel



No 242

Date 25-Jul-12

Incoming panel



No 243

Date 25-Jul-12

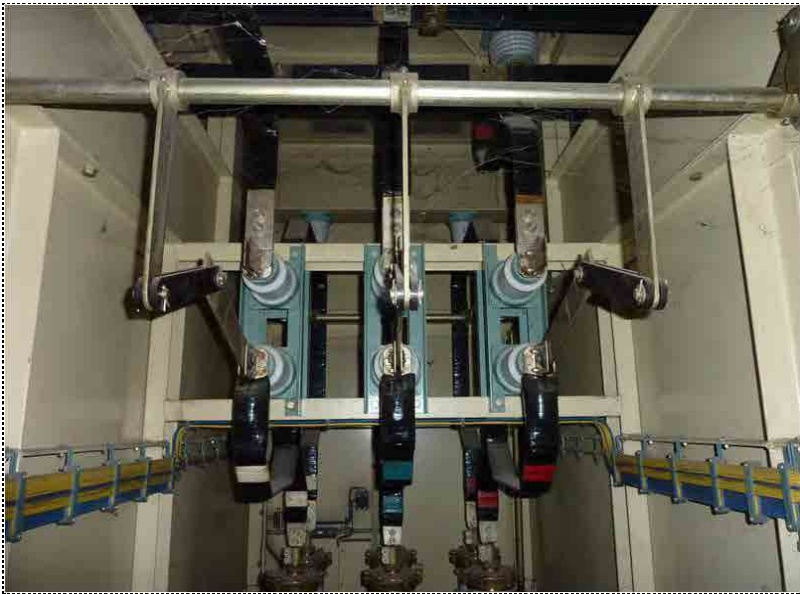
Incoming panel



No 251

Date 25-Jul-12

House Service panel



No 252

Date 25-Jul-12

House Service panel



No 253

Date 25-Jul-12

House Service panel



No 254

Date 25-Jul-12

House Service panel



No 255

Date 25-Jul-12

House Service panel



写真

No 256

Date 25-Jul-12

House Service panel



No 301

Date 25-Jul-12

No.3 Gen panel



No 302

Date 25-Jul-12

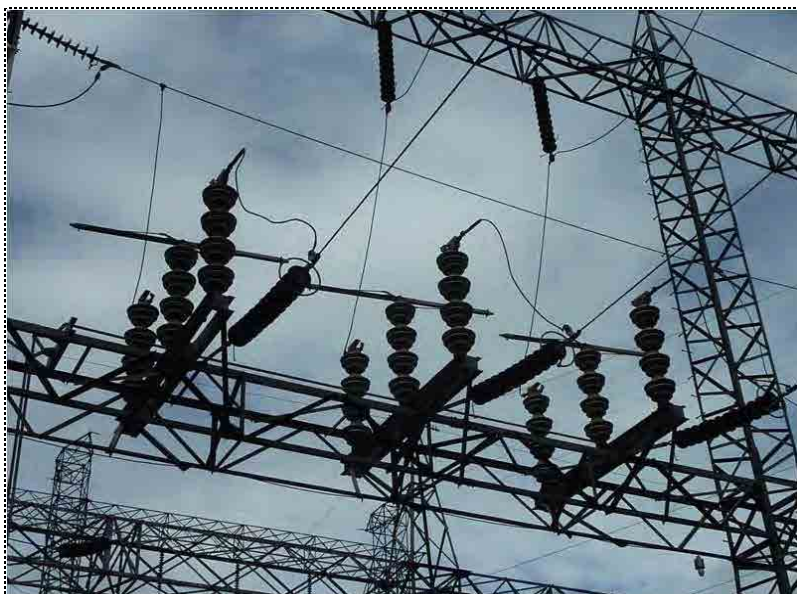
No.3 Gen panel



No 303

Date 25-Jul-12

No.3 Gen panel



No 111

Date 18-Jul-12

Equipment of Substation

132kV Disconnecting Switch (124)



No 112

Date 18-Jul-12

Equipment of Substation

132kV Disconnecting Switch (124)



No 113

Date 18-Jul-12

Equipment of Substation

132kV Disconnecting Switch (224)



No 114

Date 18-Jul-12

Equipment of Substation

132kV Disconnecting Switch (224)



No 115

Date 18-Jul-12

Equipment of Substation

132kV Disconnecting Switch (224)



写真

No 116

Date 18-Jul-12

Equipment of Substation



No 121

Date 18-Jul-12

Equipment of Substation

Circuit Breaker (C24)



No 122

Date 18-Jul-12

Equipment of Substation

Circuit Breaker (C24)

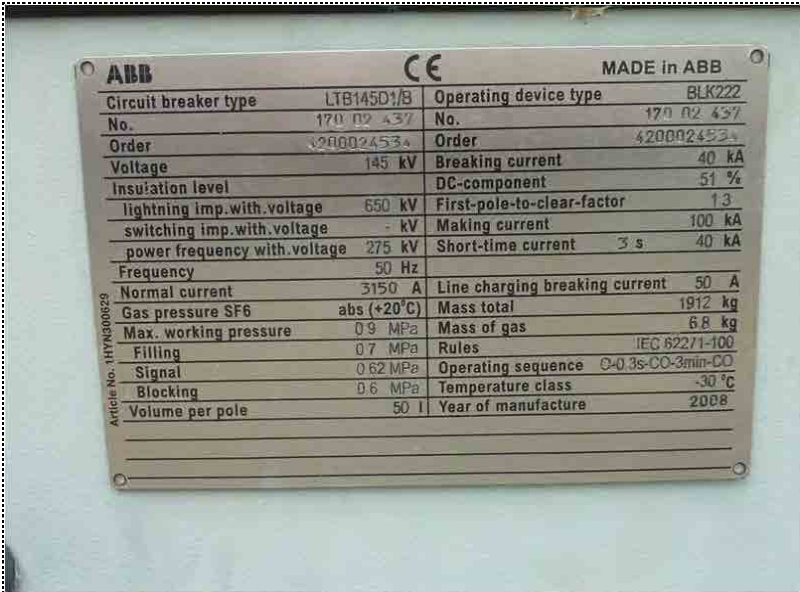


No 123

Date 18-Jul-12

Equipment of Substation

Circuit Breaker (C24)



No 124

Date 18-Jul-12

Equipment of Substation

Circuit Breaker (C24)



No 125

Date 18-Jul-12

Equipment of Substation

Circuit Breaker (C24)



No 126

Date 18-Jul-12

Equipment of Substation



No 131

Date 18-Jul-12

Equipment of Substation

Arrester (LA4)



No 132

Date 18-Jul-12

Equipment of Substation

Arrester (LA4)



No 133

Date 18-Jul-12

Equipment of Substation

Arrester (LA4)



No 134

Date 18-Jul-12

Equipment of Substation

Arrester (LA4)



No 135

Date 18-Jul-12

Equipment of Substation

Arrester (LA4)



No 136

Date 18-Jul-12

Equipment of Substation



No 141

Date 18-Jul-12

Equipment of Substation

Arrester (LA4)

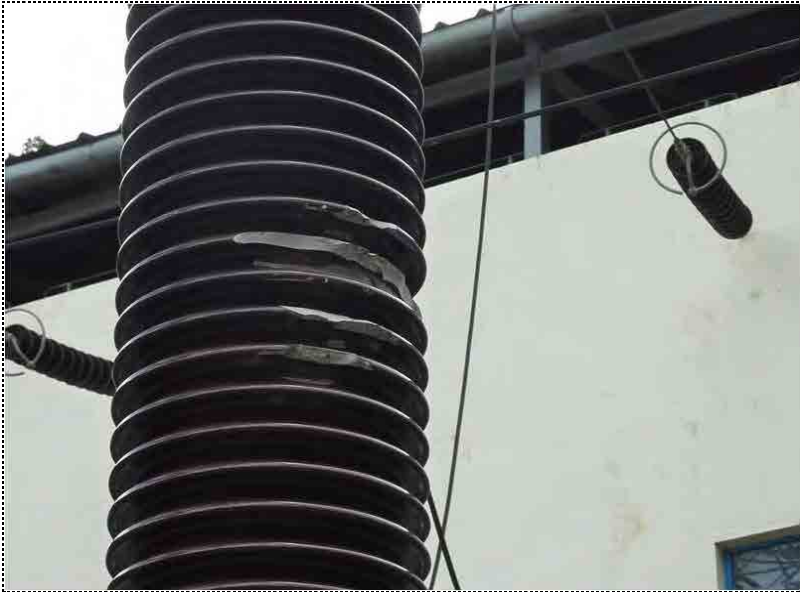


No 142

Date 18-Jul-12

Equipment of Substation

Arrester (LA4)

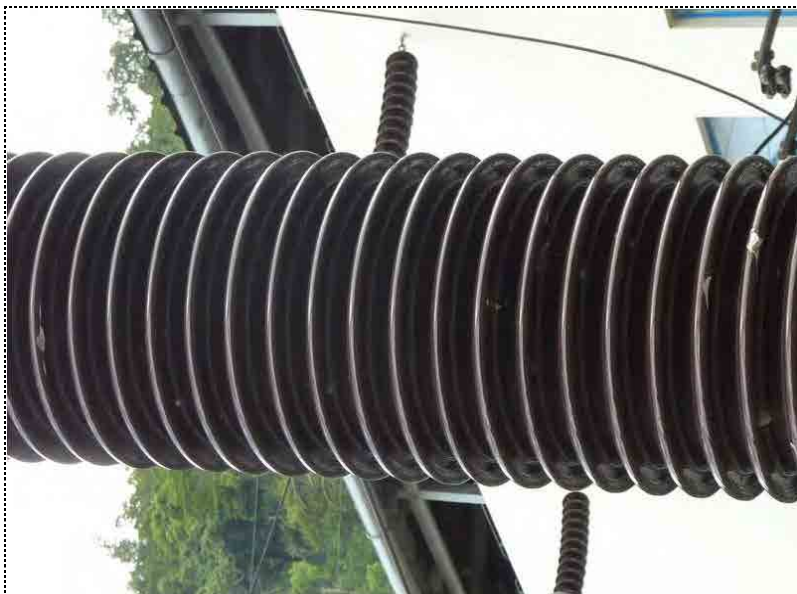


No 143

Date 18-Jul-12

Equipment of Substation

Arrester (LA4)

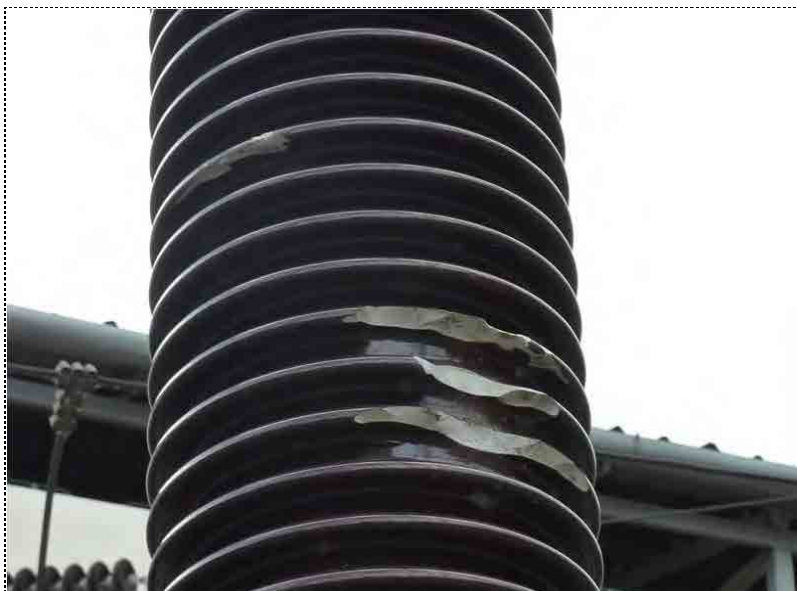


No 144

Date 18-Jul-12

Equipment of Substation

Arrester (LA4)



No 145

Date 18-Jul-12

Equipment of Substation

Arrester (LA4)



No 146

Date 18-Jul-12

Equipment of Substation

Arrester (LA4)



No 1501

Date 21-Jul-12

Equipment of Substation

Main Transformer



No 1502

Date 21-Jul-12

Equipment of Substation

Main Transformer

Phase A



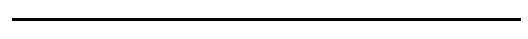
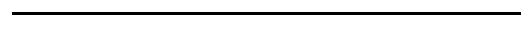
No 1503

Date 21-Jul-12

Equipment of Substation

Main Transformer

Phase A





No 1507

Date 21-Jul-12

Equipment of Substation

Main Transformer

Phase A



No 1508

Date 21-Jul-12

Equipment of Substation

Main Transformer

Phase A



No 1509

Date 21-Jul-12

Equipment of Substation

Main Transformer

Phase A



No 1510

Date 21-Jul-12

Equipment of Substation

Main Transformer

Phase A



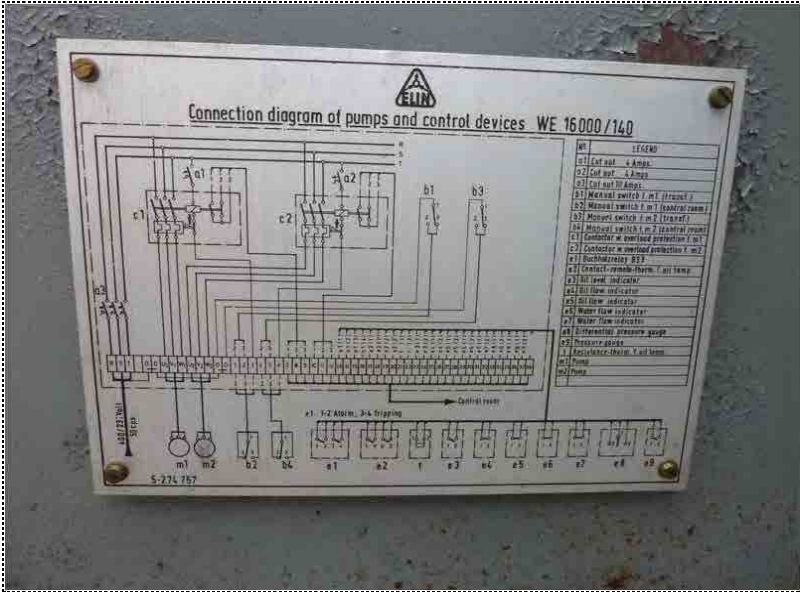
No 1511

Date 21-Jul-12

Equipment of Substation

Main Transformer

Phase A



No 1512

Date 21-Jul-12

Equipment of Substation

Main Transformer

Phase A



No 1513

Date 21-Jul-12

Equipment of Substation

Main Transformer

Phase B



No 1514

Date 21-Jul-12

Equipment of Substation

Main Transformer

Phase B



No 1515

Date 21-Jul-12

Equipment of Substation

Main Transformer

Phase B



No 1516

Date 21-Jul-12

Equipment of Substation

Main Transformer

Phase B



No 1517

Date 21-Jul-12

Equipment of Substation

Main Transformer

Phase B



No 1518

Date 21-Jul-12

Equipment of Substation

Main Transformer

Phase B



No 1519

Date 21-Jul-12

Equipment of Substation

Main Transformer

Phase C



No 1520

Date 21-Jul-12

Equipment of Substation

Main Transformer

Phase C



No 1521

Date 21-Jul-12

Equipment of Substation

Main Transformer

Phase C



No 1522

Date 21-Jul-12

Equipment of Substation

Main Transformer

Phase C



No 1523

Date 21-Jul-12

Equipment of Substation

Main Transformer

Phase C



No 1524

Date 21-Jul-12

Equipment of Substation

Main Transformer

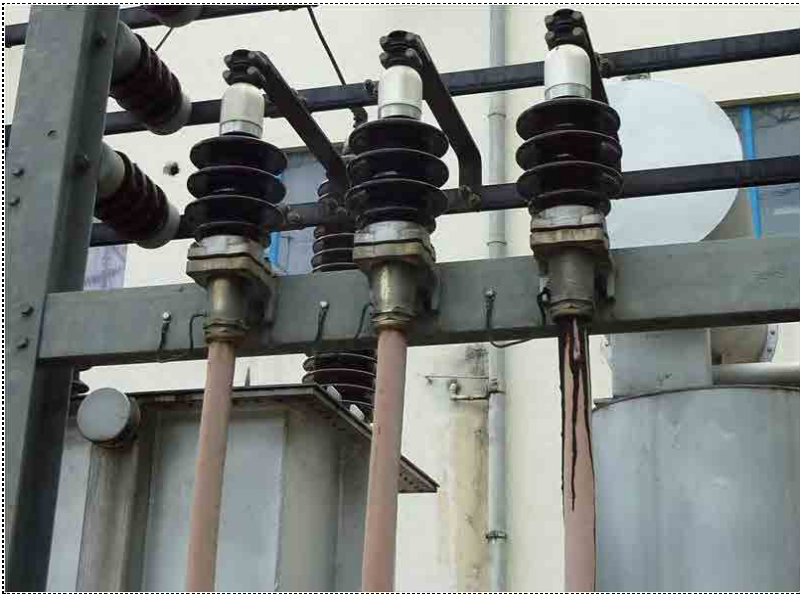
Phase C



No 161

Date 18-Jul-12

11kV cable & BUS bar



No 162

Date 18-Jul-12

11kV cable & BUS bar



No 163

Date 18-Jul-12

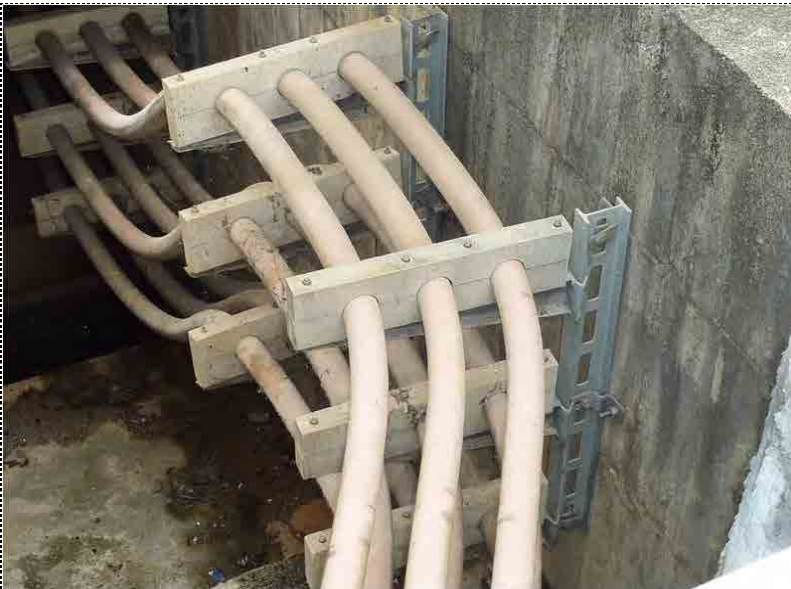
11kV cable & BUS bar



No 164

Date 18-Jul-12

11kV cable & BUS bar



No 165

Date 18-Jul-12

11kV cable & BUS bar



No 166

Date 18-Jul-12

11kV cable & BUS bar



No 171

Date 18-Jul-12

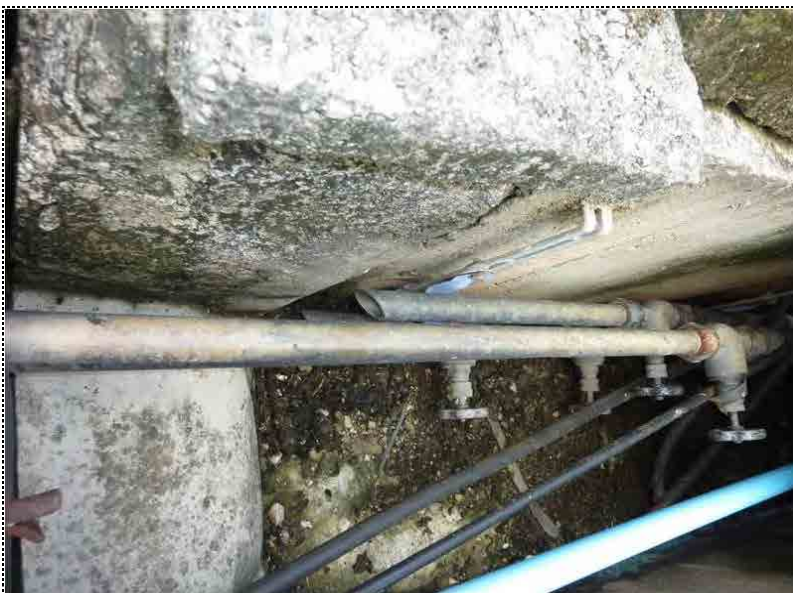
Control cable & trough



No 172

Date 18-Jul-12

Control cable & trough



No 173

Date 18-Jul-12

Control cable & trough



No 210

Date 21-Jul-12

Control panel for Generator



No 2101

Date 22-Jul-12

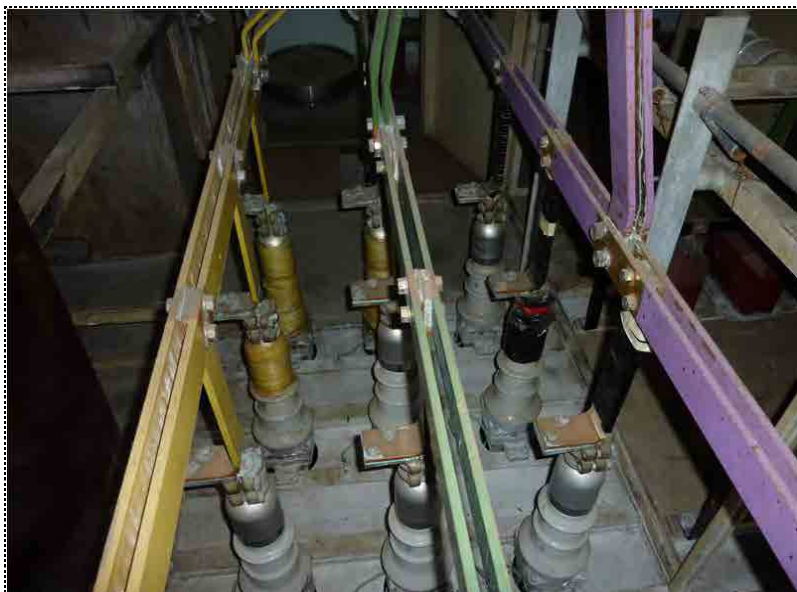
Outgoing panel



No 2102

Date 21-Jul-12

Outgoing panel



No 2103

Date 21-Jul-12

Outgoing panel



No 2104

Date 21-Jul-12

Outgoing panel



No 2105

Date 21-Jul-12

Outgoing panel



No 2106

Date 21-Jul-12

Outgoing panel



No 2107

Date 21-Jul-12

Outgoing panel



No 2108

Date 21-Jul-12

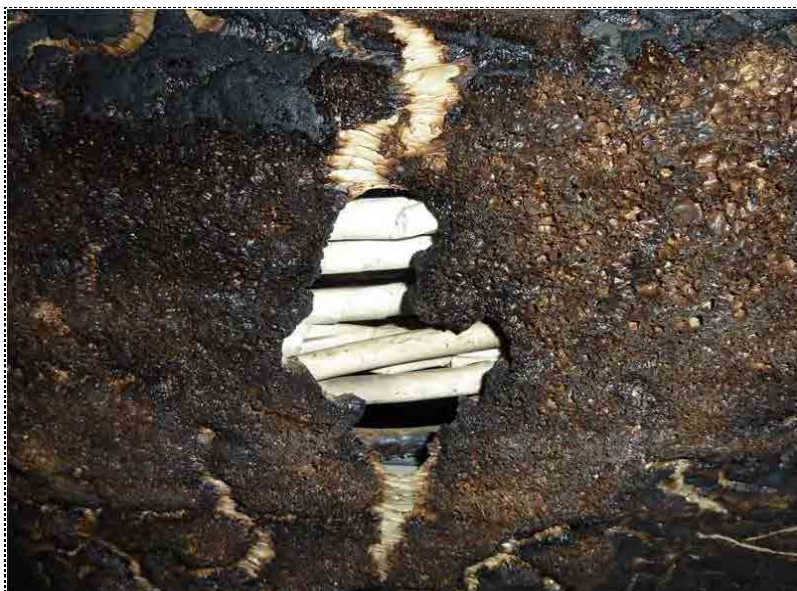
Outgoing panel



No 2109

Date 21-Jul-12

Outgoing panel



No 2110

Date 21-Jul-12

Outgoing panel



No 2111

Date 21-Jul-12

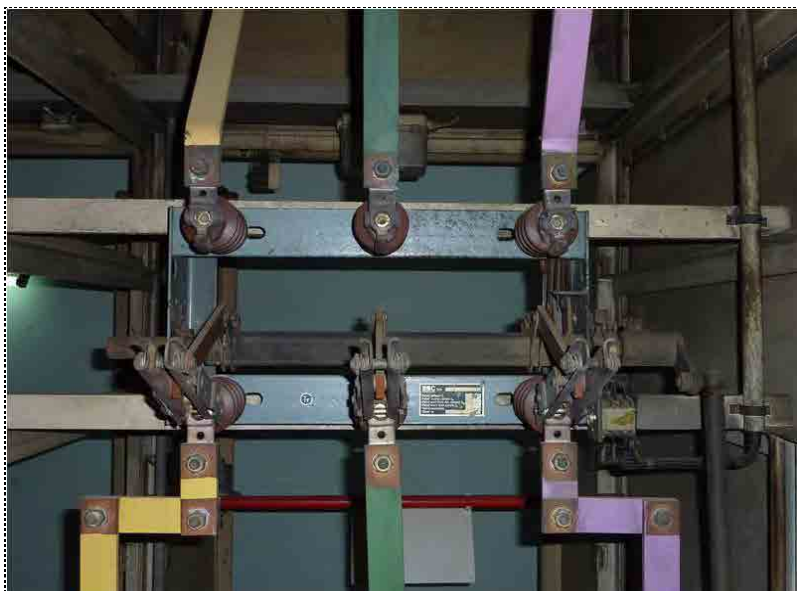
Outgoing panel



No 221

Date 21-Jul-12

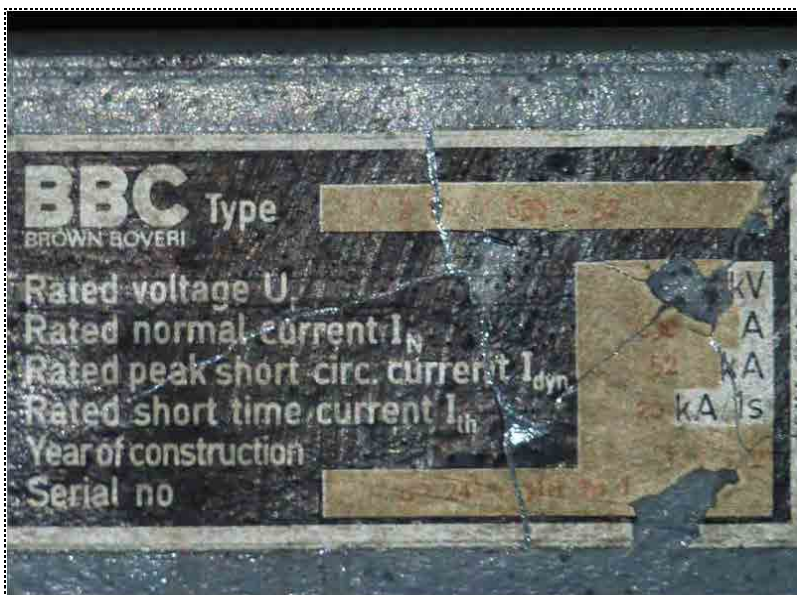
Surge Absorber panel



No 222

Date 21-Jul-12

Surge Absorber panel



No 223

Date 21-Jul-12

Surge Absorber panel



No 224

Date 21-Jul-12

Surge Absorber panel



No 225

Date 21-Jul-12

Surge Absorber panel



No 226

Date 21-Jul-12

Surge Absorber panel



No 231

Date 21-Jul-12

Voltage Transformer panel



No 232

Date 21-Jul-12

Voltage Transformer panel



No 233

Date 21-Jul-12

Voltage Transformer panel



No 234

Date 21-Jul-12

Voltage Transformer panel



No 235

Date 21-Jul-12

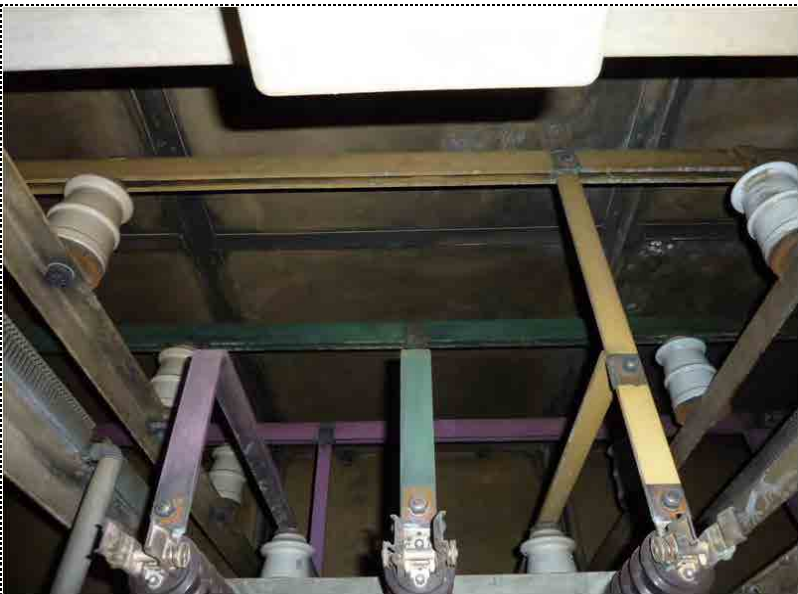
Voltage Transformer panel



No 236

Date 21-Jul-12

Voltage Transformer panel



No 237

Date 21-Jul-12

Voltage Transformer panel

Blank lines for notes.



写真

No 238

Date 21-Jul-12

Blank lines for notes.



写真

No 239

Date 21-Jul-12

Blank lines for notes.



No 241

Date 21-Jul-12

Incoming panel



No 242

Date 21-Jul-12

Incoming panel



No 243

Date 21-Jul-12

Incoming panel



No 244

Date 21-Jul-12

Incoming panel



No 245

Date 21-Jul-12

Incoming panel



写真

No 246

Date 21-Jul-12

Incoming panel



No 251

Date 21-Jul-12

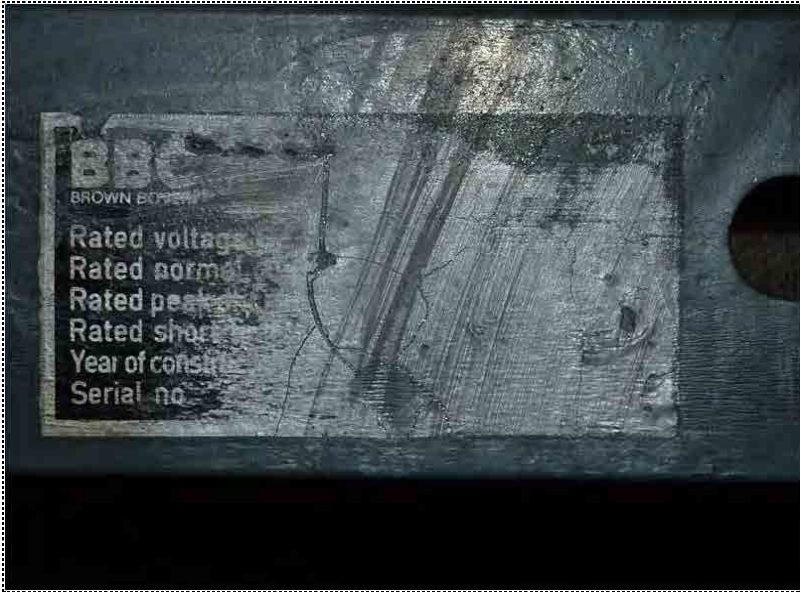
House Service panel



No 252

Date 21-Jul-12

House Service panel



No 253

Date 21-Jul-12

House Service panel



No	254
Date	21-Jul-12
House Service panel	



No	255
Date	21-Jul-12
House Service panel	



No	256
Date	21-Jul-12
House Service panel	



No 257

Date 21-Jul-12

House Service panel



No 258

Date 21-Jul-12

House Service panel



No 259

Date 21-Jul-12

House Service panel