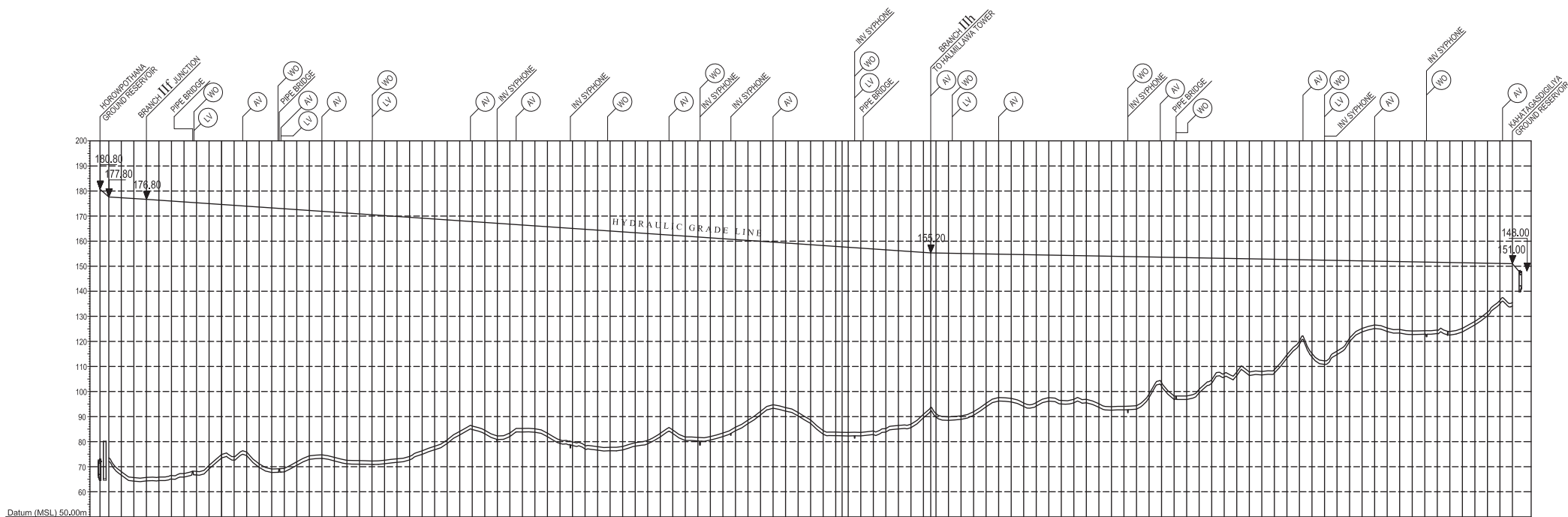


Ground Level (m)	Pipe Center Level (m)	Pipe Data
54.83	54.23	OD 500mm Ø HDPE PIPE - PN10 - SDR 17
52.11	53.51	
52.83	54.03	
51.82	53.22	
51.89	53.29	
55.83	57.23	
56.22	57.62	
54.75	56.15	
56.88	58.28	
59.73	61.13	
59.63		
59.49	59.89	
58.86	60.06	
59.20	60.80	
59.89	61.20	
61.62	63.02	
62.84	64.04	
63.59	65.39	
63.74	65.14	
65.86	67.86	
69.17	70.57	
68.54	70.04	
69.11	70.51	
69.14	70.54	
69.60	71.00	
73.50	74.90	
71.83	73.23	
72.05	74.05	
74.37	75.77	
74.08	75.28	
76.24	77.64	
78.25	80.25	
80.06	81.46	
82.78	84.19	
83.12	84.52	
84.34	85.74	
80.72	82.12	
76.51	78.31	
75.78	77.18	
74.25	75.65	
72.63	74.03	
71.95	73.35	
72.54		
89.42	70.82	
88.80	70.20	
88.82	70.22	
88.57	69.97	
88.71	70.11	
67.92		
89.57	69.97	
71.50	72.90	
72.48	73.88	
69.88	71.08	
66.55	66.95	
63.90	65.30	
63.15	64.55	
63.99	65.39	
64.19	65.59	
63.55	64.95	
63.78	65.18	
68.39	69.79	
67.17	66.57	
66.65	66.05	
66.77	66.17	
67.70	68.10	
68.37	70.77	
73.61	75.01	
78.46	79.86	
81.53	82.91	
80.71	82.11	
79.85	81.25	
79.81	81.21	
74.50	75.90	
69.86	71.26	
68.89	71.29	
70.04	71.44	
72.00	73.43	

LEGEND :
 AV - Air valve
 LV - Line valve
 WO - Wash-out

NOTE - 01.PPIPE DATA IS SHOWN IN OUTER DIAMETER.
 02.HYDRAULIC GRADE LINE IS BASED ON THE HYDRAULIC ESTIMATE IN 2034.

PROJECT: Preparatory Study for Anuradhapura North Integrated Water Supply Project		JAPAN INTERNATIONAL COOPERATION AGENCY		TITLE: TRANSMISSION PROFILE SECTION WAH -5 (II.3PS - II.4PS)								
CLIENT: NATIONAL WATER SUPPLY & DRAINAGE BOARD		CONSULTANTS : NJS CONSULTANTS CO., LTD. - JAPAN NIHON SUIDO CONSULTANTS CO., LTD. - JAPAN		REV.	DESCRIPTION	DATE	SIGN.	DESIGNED:	DRAWN:	PM: (CONSULTANT)	DRAWING NO.: WT &D/PIP/C/05	
								CHECKED:	AGM: (P&D)	DGM: (P&D)	DATE: 26/09/2012	SCALE: NTS

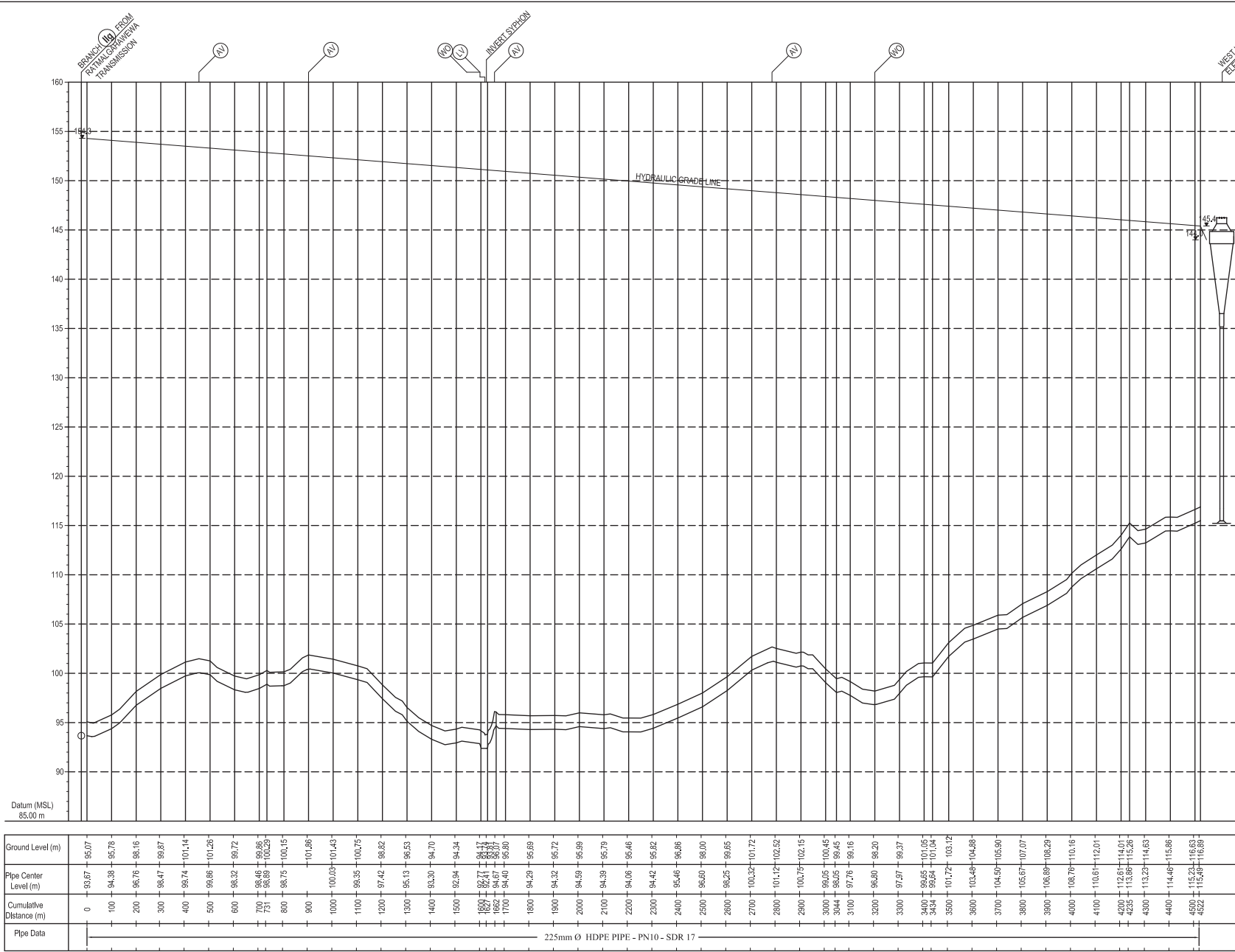


Ground Level (m)	Pipe Centre Level (m)	Pipe Data	Cumulative Distance (m)
72.03	73.43	OD 500mm Ø HDPE PIPE - PN16 - SDR 11	000
86.64	88.04		200
84.26	85.66		400
84.35	85.75		600
84.47	85.87		800
85.07	86.47		1000
85.86	87.26		1200
86.73	88.13		1400
88.16	89.56		1600
73.49	74.89		1800
72.65	74.05		2000
74.45	75.85		2200
89.74	91.14		2400
87.70	89.10		2600
87.94	89.34		2800
70.56	71.96		3000
73.34	74.74		3200
72.32	73.72		3400
71.03	72.43		3600
70.69	72.09		3800
71.18	72.58	4000	
71.74	73.14	4200	
72.70	74.10	4400	
74.95	76.35	4600	
76.78	78.18	4800	
79.29	80.69	5000	
82.68	84.08	5200	
84.83	86.23	5400	
83.13	84.53	5600	
82.25	83.65	5800	
82.04	83.44	6000	
83.87	85.27	6200	
83.75	85.15	6400	
81.58	83.38	6600	
79.32	81.12	6800	
78.48	79.88	7000	
78.46	79.86	7200	
76.60	78.00	7400	
76.37	77.77	7600	
76.66	78.06	7800	
78.19	79.59	8000	
79.16	80.56	8200	
81.28	82.28	8400	
83.27	84.97	8600	
80.46	81.86	8800	
80.29	81.69	9000	
80.03	81.43	9200	
82.04	83.44	9400	
84.37	85.77	9600	
87.21	88.81	9800	
90.68	92.08	10000	
93.34	94.74	10200	
92.18	93.58	10400	
90.25	91.65	10600	
87.28	88.68	10800	
82.99	84.39	11000	
83.81	85.11	11200	
82.41	83.71	11400	
83.28	84.58	11600	
82.30	83.70	11800	
82.85	84.25	12000	
83.82	85.22	12200	
85.08	86.48	12400	
85.57	86.97	12600	
85.52	86.92	12800	
88.91	90.61	13000	
88.50	90.20	13200	
88.80	90.30	13400	
90.54	91.94	13600	
93.31	95.31	13800	
96.20	97.80	14000	
95.85	97.25	14200	
94.04	95.44	14400	
94.22	95.62	14600	
95.18	97.58	14800	
95.07	96.47	15000	
95.51	96.91	15200	
93.72	95.12	15400	
92.55	93.95	15600	
92.68	94.08	15800	
92.97	94.37	16000	
97.60	99.00	16200	
102.12	103.32	16400	
96.82	98.22	16600	
99.51	100.91	16800	
103.27	104.67	17000	
105.81	107.21	17200	
105.96	107.76	17400	
106.60	107.80	17600	
106.60	108.00	17800	
107.28	108.76	18000	
113.28	114.88	18200	
118.78	120.18	18400	
113.77	115.17	18600	
112.22	113.22	18800	
114.73	116.13	19000	
119.95	121.35	19200	
123.77	125.17	19400	
125.15	126.55	19600	
123.84	125.34	19800	
123.35	124.75	20000	
122.74	124.14	20200	
122.86	124.26	20400	
123.13	124.53	20600	
122.54	123.94	20800	
123.79	125.19	21000	
126.59	127.99	21200	
130.23	131.63	21400	
134.91	136.31	21600	
134.10	135.50	21800	
148.00	151.00	22000	
148.00	151.00	22200	
148.00	151.00	22400	

NOTE 1: PIPE DATA IS SHOWN IN OUTER DIAMETER.
 NOTE 2: HYDRAULIC GRADE LINE IS BASED ON THE HYDRAULIC ESTIMATE IN 2034.

LEGEND:
 AV - Air valve
 LV - Line valve
 WO - Wash-out

PROJECT: Preparatory Study for Anuradhapura North Integrated Water Supply Project		JAPAN INTERNATIONAL COOPERATION AGENCY		TITLE: TRANSMISSION PROFILE SECTION - 6 (II.4PS - II.5PS)								
CLIENT: NATIONAL WATER SUPPLY & DRAINAGE BOARD		CONSULTANTS: NJS CONSULTANTS CO., LTD. - JAPAN NIHON SUIDO CONSULTANTS CO., LTD. - JAPAN		REV.	DESCRIPTION	DATE	SIGN.	DESIGNED:	DRAWN:	PM: (CONSULTANT)	DRAWING NO.: WT&D/PIP/C/06	
								CHECKED:	AGM: (P&D)	DGM: (P&D)	DATE: 26/09/2012	SCALE: NTS



LEGEND :
 AV - Air valve
 LV - Line valve
 WO - Washout

NOTE - 01.PEPE DATA IS SHOWN IN OUTER DIAMETER. 02.HYDRAULIC GRADE LINE IS BAS

PROJECT: Preparatory Study for Anuradhapura North Integrated Water Supply Project

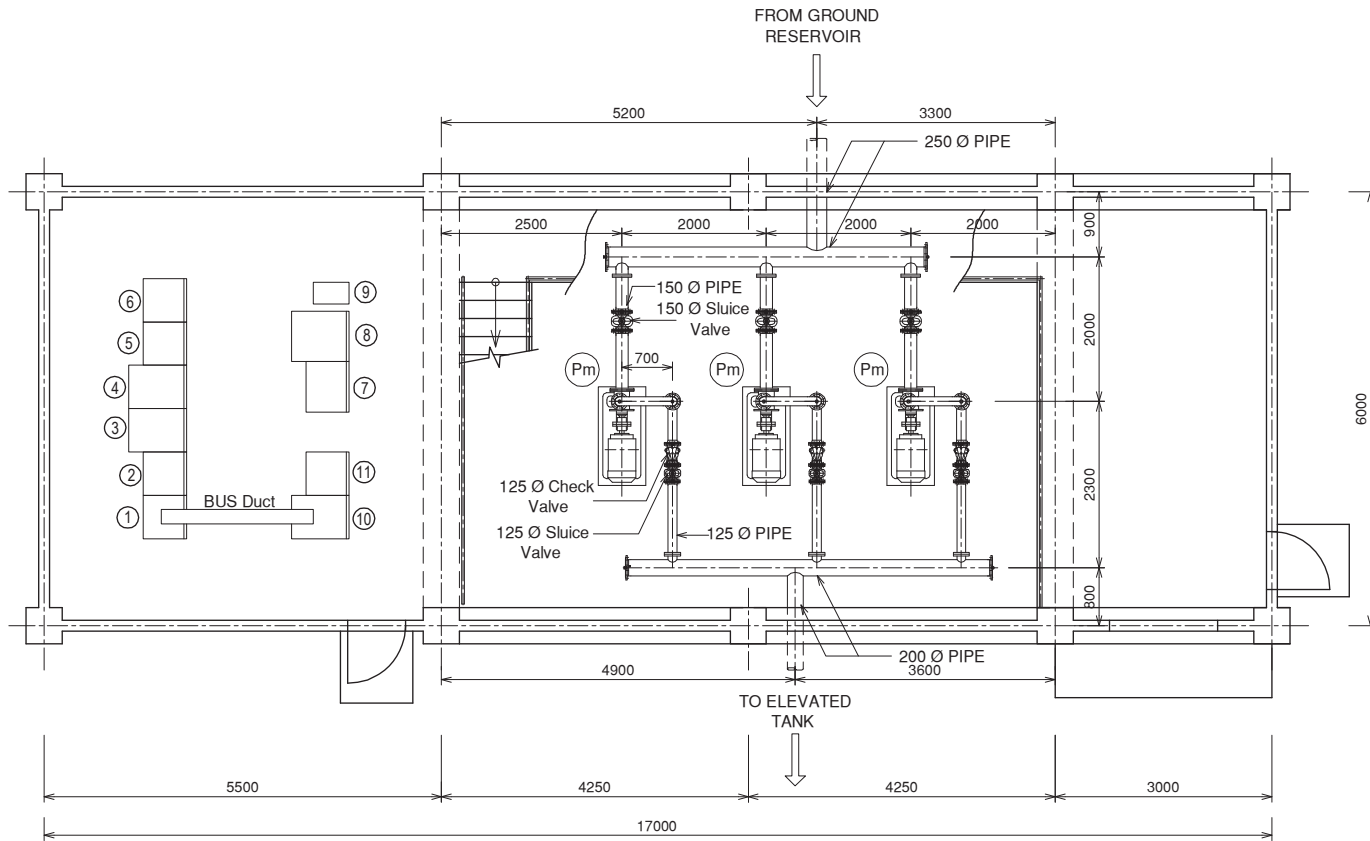
CLIENT: NATIONAL WATER SUPPLY & DRAINAGE BOARD

JICA JAPAN INTERNATIONAL COOPERATION AGENCY

CONSULTANTS :
 NJS CONSULTANTS CO., LTD. - JAPAN
 NIHON SUIDO CONSULTANTS CO., LTD. - JAPAN

TITLE: TRANSMISSION PROFILE SECTION WAH - 8 (II.g - II.8ET)

REV.	DESCRIPTION	DATE	SIGN.	DESIGNED:	DRAWN:	PM: (CONSULTANT)	DRAWING NO.:
							WT&D/PIP/C/08
				CHECKED:	AGM: (P&D)	DGM: (P&D)	DATE: 26-09-2012
							SCALE: AS SHOWN



PLAN

Scale:- 1:75

Description of Electrical Panel

No.	Description
①	Power Incoming MCC-1 main
②	Generator Incoming MCC-G
③	Elevated Tank Transmission Pump-1 VSD
④	Elevated Tank Transmission Pump-2 VSD
⑤	MCC-2 for other loads
⑥	MCC-3 for other loads
⑦	Control Relay Panel
⑧	Instrumentation Panel
⑨	UPS
⑩	Elevated Tank Transmission Pump-2 VSD
⑪	MCC-4 for other loads

Specification of Pumps

No.	Pm
Pump Type	End Suction
Flow (m ³ /m)	1.12
Total Head (m)	36
Motor kW (kW)	15

NOTE:-

All Dimensions Are in Millimeters

PROJECT: Preparatory Study for Anuradhapura North Integrated Water Supply Project



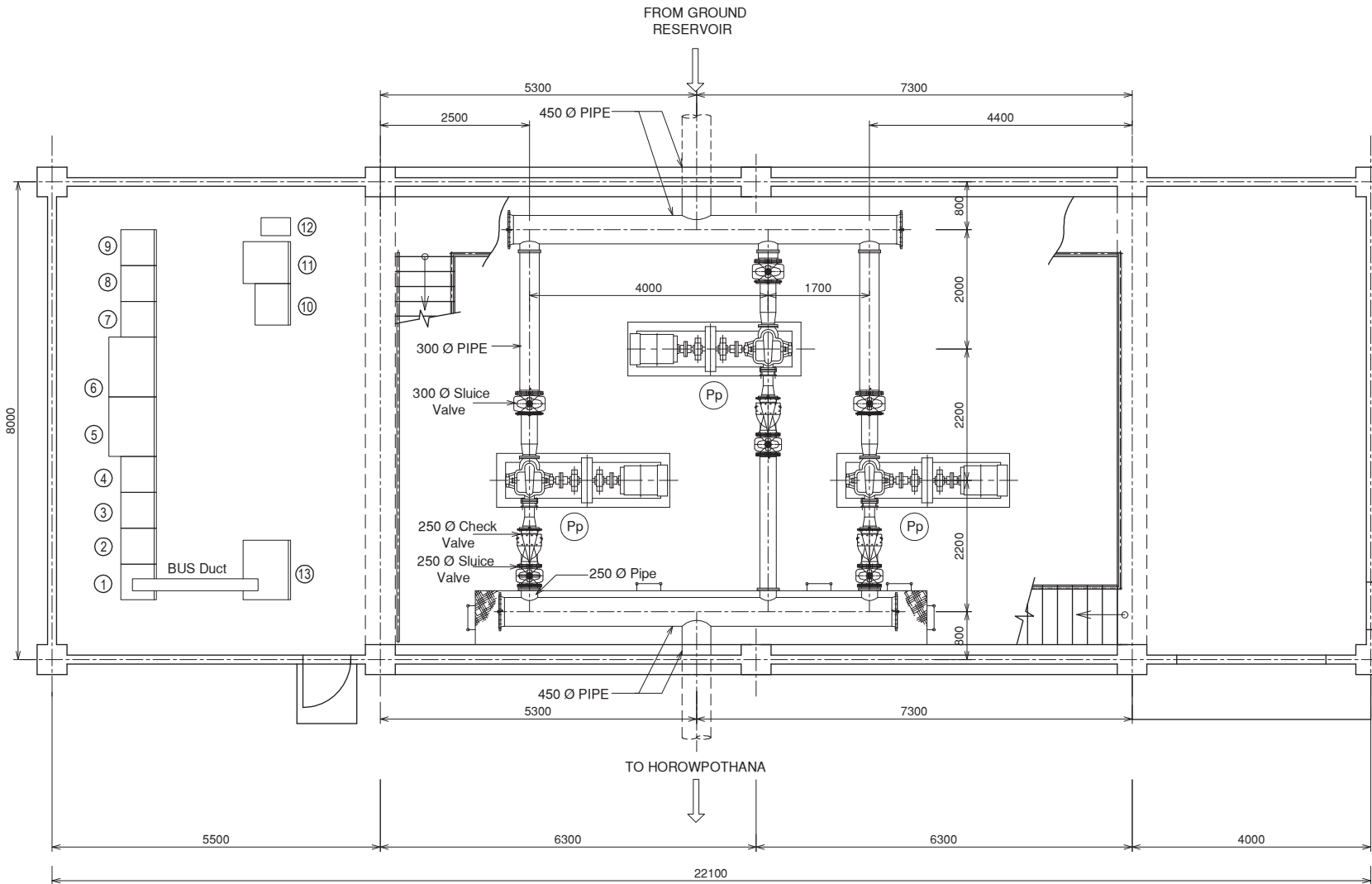
JAPAN INTERNATIONAL COOPERATION AGENCY

TITLE: KEBITHIGOLLEWA PUMP STATION

CLIENT: NATIONAL WATER SUPPLY & DRAINAGE BOARD

CONSULTANTS: NJS CONSULTANTS CO., LTD. - JAPAN
NIHON SUIDO CONSULTANTS CO., LTD. - JAPAN

REV.	DESCRIPTION	DATE	SIGN.	DESIGNED:	DRAWN:	PM: (CONSULTANT)	DRAWING NO.:
					THARAKA		WT&D/PHM/02
				CHECKED:	AGM: (P&D)	DGM: (P&D)	DATE: 05/09/2012
							SCALE: As Given



PLAN
Scale:- 1:75

Description of Electrical Panel

No.	Description
①	Power Incoming MCC-1 main
②	Generator Incoming MCC-G
③	Weerasole Transmission Pump-1 VSD
④	Weerasole Transmission Pump-2 VSD
⑤	Horowpothana Transmission Pump-1 VSD
⑥	Horowpothana Transmission Pump-2 VSD
⑦	MCC-2 for other loads
⑧	MCC-3 for other loads
⑨	MCC-4 for other loads
⑩	Control Relay Panel
⑪	Instrumentation Panel
⑫	UPS
⑬	Horowpothana Transmission Pump-3 VSD

Specification of Pumps

No.	Pp
Pump Type	Double Suction
Flow (m ³ /m)	5.24
Total Head (m)	62
Motor kW (kW)	90

NOTE:-

All Dimensions Are in Millimeters

PROJECT: Preparatory Study for Anuradhapura North Integrated Water Supply Project



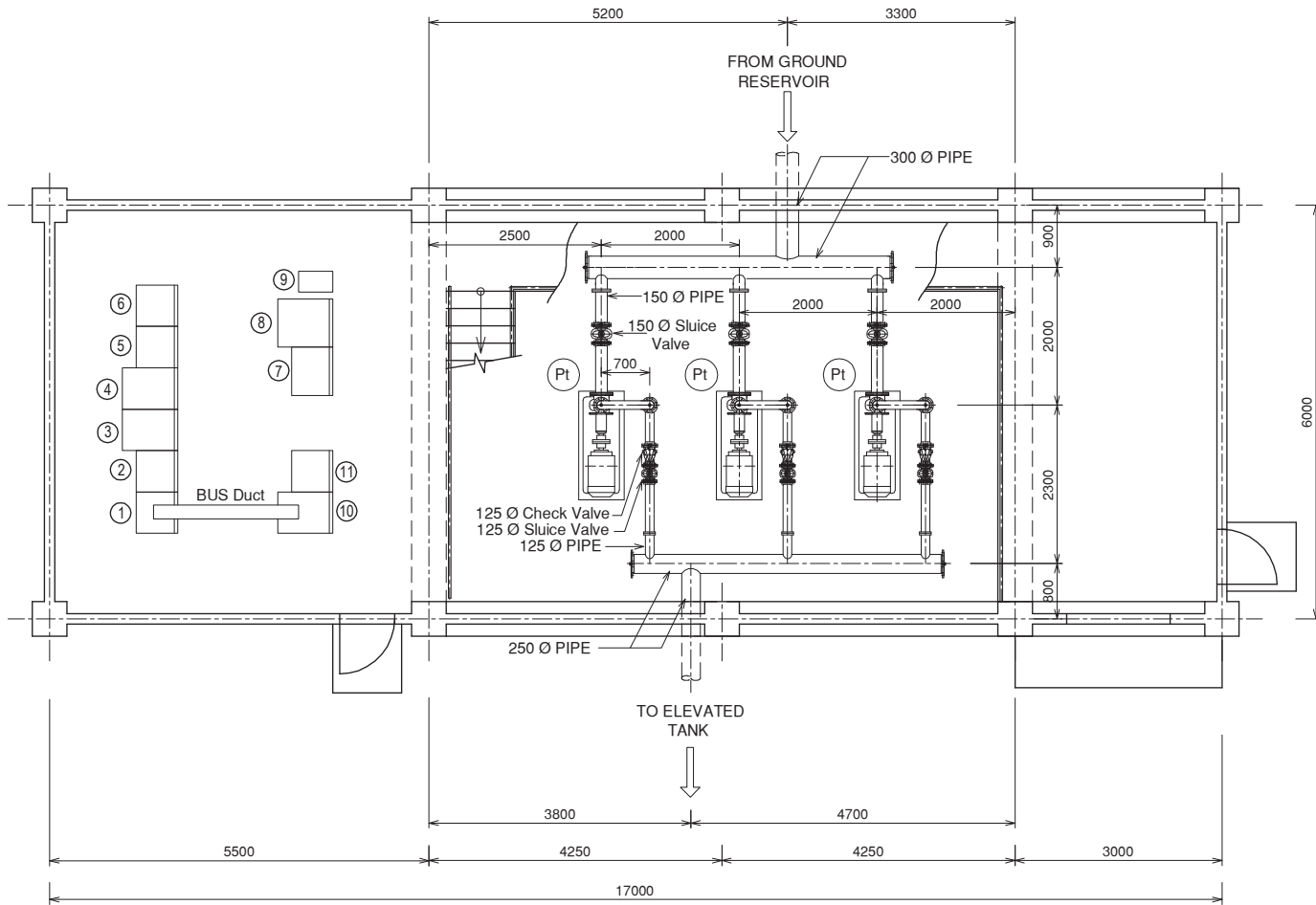
JAPAN INTERNATIONAL COOPERATION AGENCY

TITLE: WEERASOLE PUMP STATION

CLIENT: NATIONAL WATER SUPPLY & DRAINAGE BOARD

CONSULTANTS:
NJS CONSULTANTS CO., LTD. - JAPAN
NIHON SUIDO CONSULTANTS CO., LTD. - JAPAN

REV.	DESCRIPTION	DATE	SIGN.	DESIGNED:	DRAWN:	PM: (CONSULTANT)	DRAWING NO.:
					THARAKA		WT&D/PH/M/03
				CHECKED:	AGM: (P&D)	DGM: (P&D)	DATE: 06/09/2012
							SCALE: As Given



PLAN
Scale:- 1:75

Description of Electrical Panel

No.	Description
①	Power Incoming MCC-1 main
②	Generator Incoming MCC-G
③	Elevated Tank Transmission Pump-1 VSD
④	Elevated Tank Transmission Pump-2 VSD
⑤	MCC-2 for other loads
⑥	MCC-3 for other loads
⑦	Control Relay Panel
⑧	Instrumentation Panel
⑨	UPS
⑩	Elevated Tank Transmission Pump-3 VSD
⑪	MCC-4 for other loads

Specification of Pumps

No.	Pt
Pump Type	End Suction
Flow (m ³ /m)	1.88
Total Head (m)	36
Motor kW (kW)	22

NOTE:-

All Dimensions Are in Millimeters

PROJECT: Preparatory Study for Anuradhapura North Integrated Water Supply Project



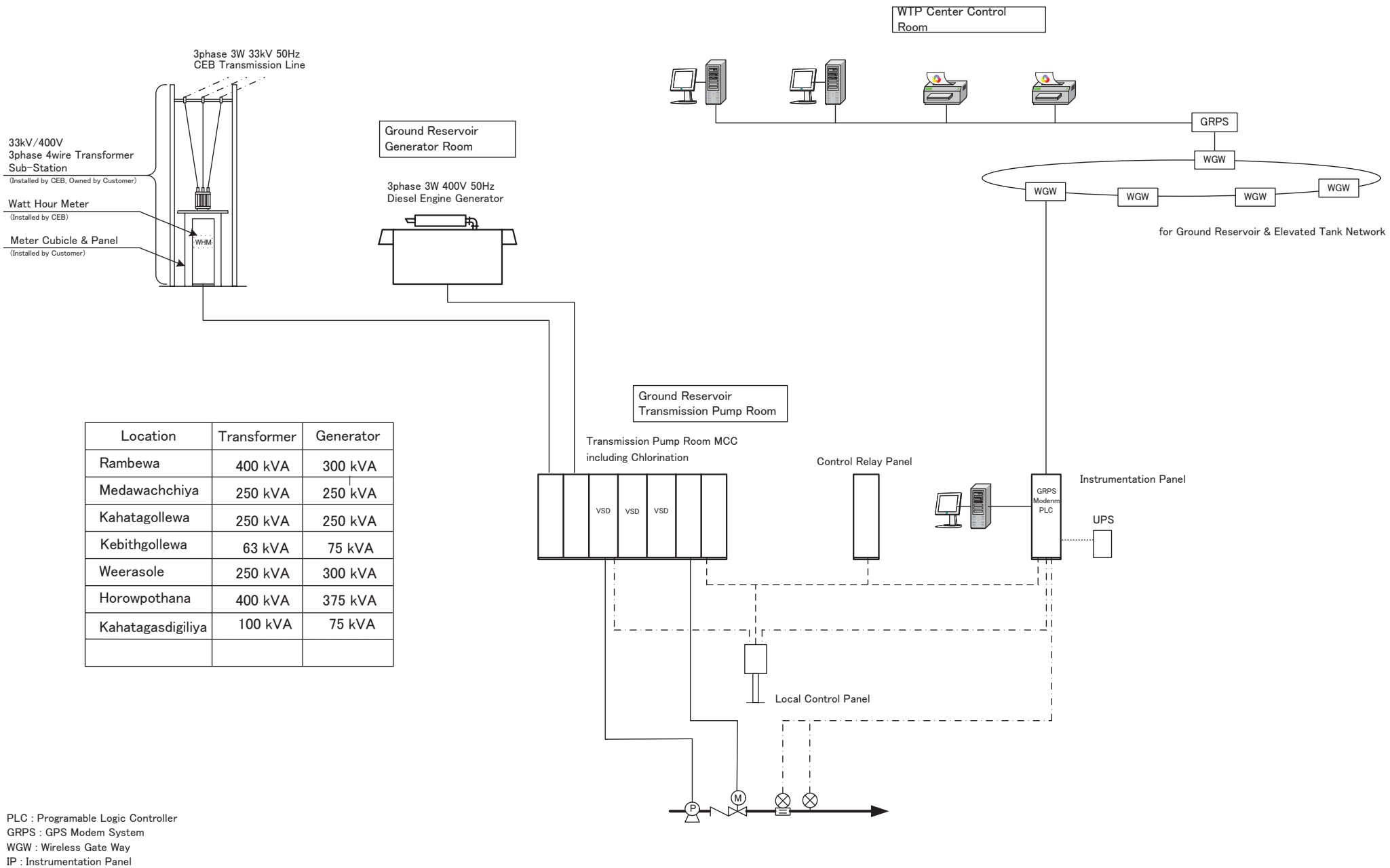
JAPAN INTERNATIONAL COOPERATION AGENCY

TITLE: KAHATAGASDIGILIYA PUMP STATION

CLIENT: NATIONAL WATER SUPPLY & DRAINAGE BOARD

CONSULTANTS:
NJS CONSULTANTS CO., LTD. - JAPAN
NIHON SUIDO CONSULTANTS CO., LTD. - JAPAN

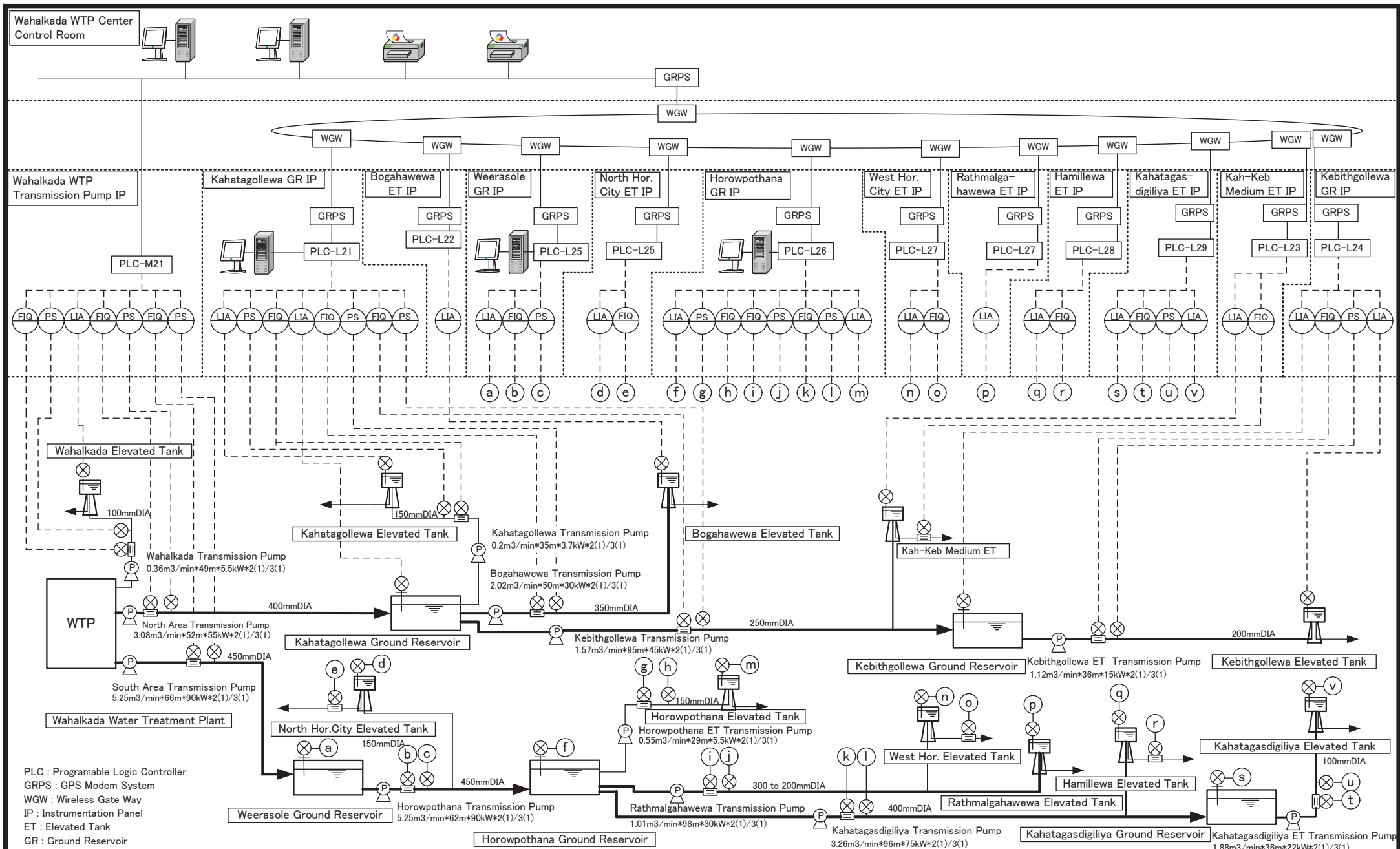
REV.	DESCRIPTION	DATE	SIGN.	DESIGNED:	DRAWN:	PM: (CONSULTANT)	DRAWING NO.:
					THARAKA		WT&D/PHM/05
				CHECKED:	AGM: (P&D)	DGM: (P&D)	DATE: 05/09/2012
							SCALE: As Given



Location	Transformer	Generator
Rambewa	400 kVA	300 kVA
Medawachchiya	250 kVA	250 kVA
Kahatagollewa	250 kVA	250 kVA
Kebithgollewa	63 kVA	75 kVA
Weerasole	250 kVA	300 kVA
Horowpothana	400 kVA	375 kVA
Kahatagasdigiya	100 kVA	75 kVA

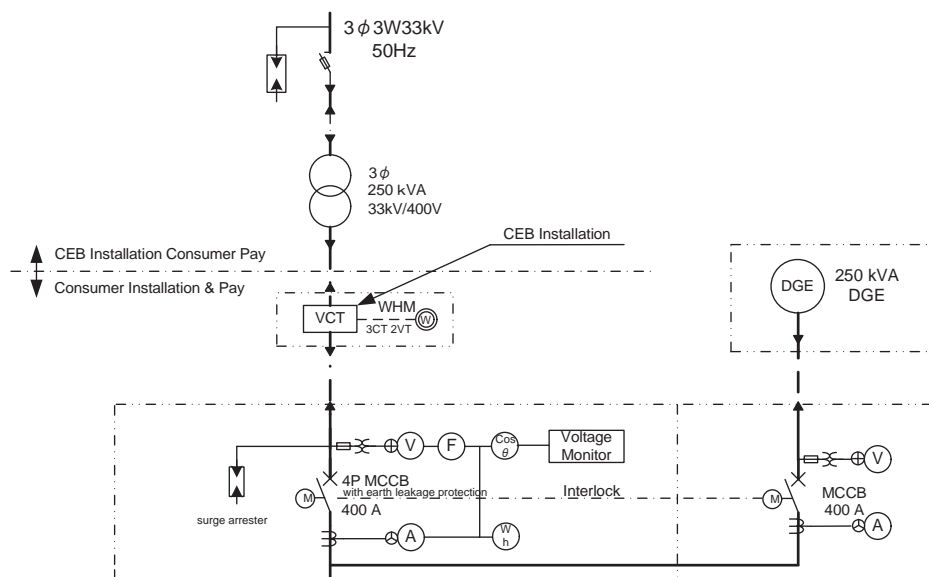
PLC : Programmable Logic Controller
 GRPS : GPS Modem System
 WGW : Wireless Gate Way
 IP : Instrumentation Panel

PROJECT: Preparatory Study for Anuradhapura North Integrated Water Supply Project	JAPAN INTERNATIONAL COOPERATION AGENCY	TITLE: TYPICAL GROUND RESERVOIR SYSTEM CONFIGURATION DIAGRAM								
CLIENT: NATIONAL WATER SUPPLY & DRAINAGE BOARD	CONSULTANTS: NJS CONSULTANTS CO., LTD. - JAPAN NIHON SUIDO CONSULTANTS CO., LTD. - JAPAN	REV.	DESCRIPTION	DATE	SIGN.	DESIGNED: Akiyama	DRAWN: Akiyama	PM: (CONSULTANT) Miwa	DRAWING NO.: MWT&D/STD/E/01	
						CHECKED:	AGM: (P&D)	DGM: (P&D)	DATE: 15/09/2012	SCALE: NON



PROJECT: Preparatory Study for Anuradhapura North Integrated Water Supply Project		JICA JAPAN INTERNATIONAL COOPERATION AGENCY		TITLE: WAHALKADA INSTRUMENTATION FLOW DIAGRAM								
CLIENT: NATIONAL WATER SUPPLY & DRAINAGE BOARD		CONSULTANTS: NJS CONSULTANTS CO., LTD. - JAPAN NIHON SUIDO CONSULTANTS CO., LTD. - JAPAN		REV.	DESCRIPTION	DATE	SIGN.	DESIGNED: AKIYAMA	DRAWN: AKIYAMA	PM: (CONSULTANT) MIWA	DRAWING NO.: WT&D/STDE/01	
								CHECKED:	AGM: (P&D)	DGM: (P&D)	DATE: 15/09/2012	SCALE: NON

From CEB Transmission Line



Load	Kebithigollewa GR Transmission Pump	Discharge Valve for Kebithigollewa	Bogahawewa ET Transmission Pump	Discharge Valve for Begehewa	Kahatagollewa ET Transmission Pump	Discharge Valve for Kahatagollewa	Chlorination Booster Pump	Exhaust Fan	Ventilation	Lighting	For GGE	For Control
Output (kW)	45	0.4	30	0.4	3.7	0.4	5.5	0.25	0.2	2	1	3
Starting Method	VSD	R	VSD	R	RSD	R	NR	NR	NR	F	F	F
MCCB (AF)	100	50	50	50	50	50	50	50	50	50	50	50
Earth Fault Protection	Install	Install	Install	Install	Install	Install	Install	Install	Install			
Ammeter	Install		Install		Install		Install		Install			
Run Hour Meter	Install		Install		Install		Install		Install			
Capacitor (kVar)												
Qty	1st Stage	2	2	2	2	2	2	2	2	1	1	1
	Final	3	3	3	3	3	2	2	2	1	1	1

Legend

NR	Direct On Line Starter
R	Reversible Starter
VSD	Variable Speed Driver
SS	Soft Starter
RSD	Closed Transition Star Delta Starter
F	MCCB Feeder

Voltage monitor shall be provided with the following features and interlocked with all motor starters.

1. Phase failure protection
2. Supply voltage imbalance (adjustable)
3. Under and over voltage (adjustable)
4. Phase revers

PROJECT: Preparatory Study for Anuradhapura North Integrated Water Supply Project



JAPAN INTERNATIONAL COOPERATION AGENCY

TITLE:

KAHATAGOLLEWA GROUND RESERVOIR SINGLE LINE DIAGRAM

CLIENT: NATIONAL WATER SUPPLY & DRAINAGE BOARD



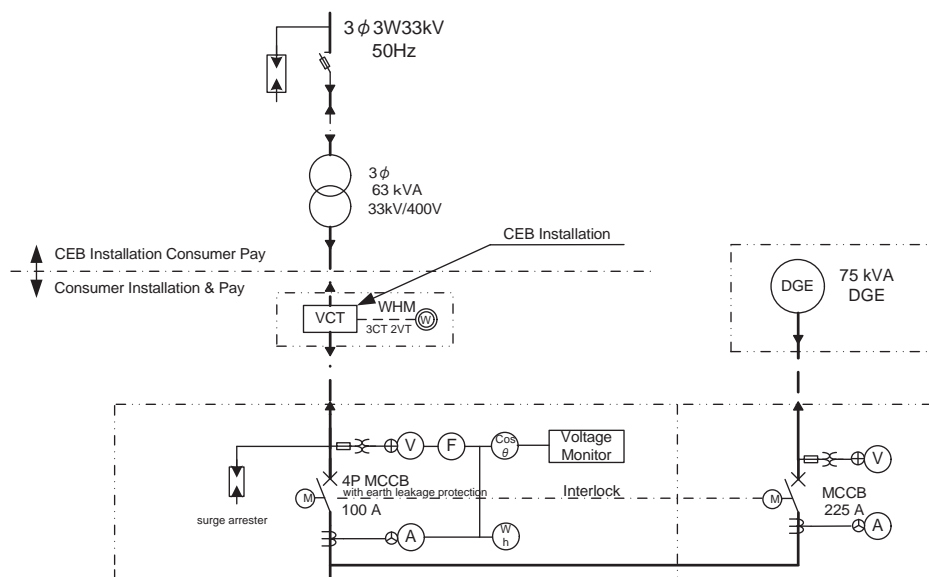
CONSULTANTS: NJS CONSULTANTS CO., LTD. - JAPAN
NIHON SUIDO CONSULTANTS CO., LTD. - JAPAN



REV.	DESCRIPTION	DATE	SIGN.

DESIGNED: AKIYAMA	DRAWN: AKIYAMA	PM: (CONSULTANT) MIWA	DRAWING NO.: WT&D/GR/E/01
CHECKED:	AGM: (P&D)	DGM: (P&D)	DATE: 15/09/2012
			SCALE: NON

From CEB Transmission Line



Load	Kebithgollewa ET Transmission Pump	Discharge Valve for Kebithgollewa	Chlorination Booster Pump	Exhaust Fan	Ventilation	Lighting	For GGE						For Control
Output (kW)	15	0.4	5.5	0.25	0.2	2	1						3
Starting Method	SS	R	NR	NR	NR	F	For GGE						F
MCCB (AF)	50	50	50	50	50	50	50						50
Earth Fault Protection	Install	Install	Install	Install	Install								
Ammeter	Install		Install		Install								
Run Hour Meter	Install		Install		Install								
Capacitor (kVar)													
Qty	1st Stage	2	2	2	2	2	1	1					1
	Final	3	3	2	2	2	1	1					1

Legend

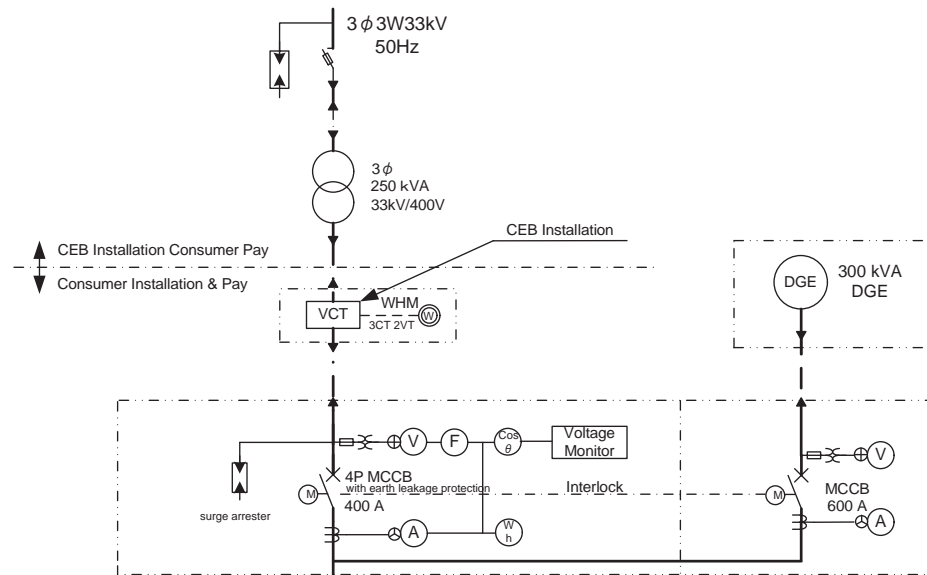
NR	Direct On Line Starter
R	Reversible Starter
VSD	Variable Speed Driver
SS	Soft Starter
RSD	Closed Transition Star Delta Starter
F	MCCB Feeder

Voltage monitor shall be provided with the following features and interlocked with all motor starters.

1. Phase failure protection
2. Supply voltage imbalance (adjustable)
3. Under and over voltage (adjustable)
4. Phase revers

PROJECT: Preparatory Study for Anuradhapura North Integrated Water Supply Project		CONSULTANTS: JICA JAPAN INTERNATIONAL COOPERATION AGENCY		TITLE: KEBITHGOLLEWA GROUND RESERVOIR SINGLE LINE DIAGRAM								
CLIENT: NATIONAL WATER SUPPLY & DRAINAGE BOARD		CONSULTANTS: NJS CONSULTANTS CO., LTD. - JAPAN NIHON SUIDO CONSULTANTS CO., LTD. - JAPAN		REV.	DESCRIPTION	DATE	SIGN.	DESIGNED: AKIYAMA	DRAWN: AKIYAMA	PM: (CONSULTANT) MIWA	DRAWING NO.: WT&D/GR/E/02	
								CHECKED:	AGM: (P&D)	DGM: (P&D)	DATE: 15/09/2012	SCALE: NON

From CEB Transmission Line



Load	Horowpothana Transmission Pump	Discharge Valve for Horowpothana	Chlorination Booster Pump	Exhaust Fan	Ventilation	Lighting	For GGE					For Control
Output (kW)	90	0.4	5.5	0.25	0.2	2	1					3
Starting Method	VSD	R	NR	NR	NR	F	For GGE					F
MCCB (AF)	225	50	50	50	50	50	50					50
Earth Fault Protection	Install	Install	Install	Install	Install							
Ammeter	Install		Install		Install							
Run Hour Meter	Install		Install		Install							
Capacitor (kVar)												
Qty	1st Stage	2	2	2	2	2	1	1				1
	Final	3	3	2	2	2	1	1				1

Legend

NR	Direct On Line Starter
R	Reversible Starter
VSD	Variable Speed Driver
SS	Soft Starter
RSD	Closed Transition Star Delta Starter
F	MCCB Feeder

Voltage monitor shall be provided with the following features and interlocked with all motor starters.

1. Phase failure protection
2. Supply voltage imbalance (adjustable)
3. Under and over voltage (adjustable)
4. Phase revers

PROJECT: Preparatory Study for Anuradhapura North Integrated Water Supply Project



JAPAN INTERNATIONAL COOPERATION AGENCY

TITLE:

WEERASOLE GROUND RESERVOIR SINGLE LINE DIAGRAM

CLIENT:



NATIONAL WATER SUPPLY & DRAINAGE BOARD

CONSULTANTS :



NJS CONSULTANTS CO., LTD. - JAPAN



NIHON SUIDO CONSULTANTS CO., LTD.- JAPAN

REV.	DESCRIPTION	DATE	SIGN.

DESIGNED:

AKIYAMA

DRAWN:

AKIYAMA

PM: (CONSULTANT)

MWA

DRAWING NO.:

WT&D/GR/E/03

CHECKED:

AGM: (P&D)

DGM: (P&D)

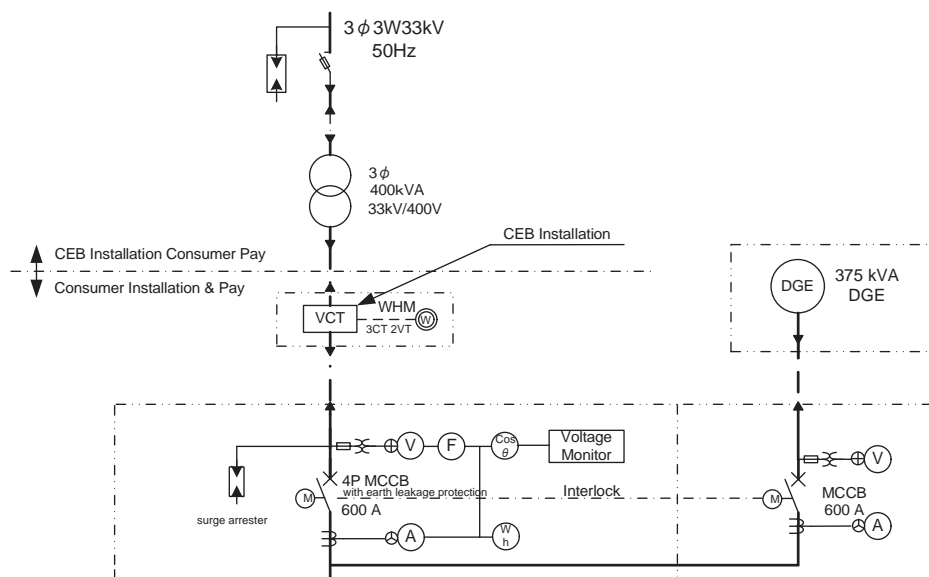
DATE:

15/09/2012

SCALE:

NON

From CEB Transmission Line



Load	Horowpothana ET Transmission Pump	Discharge Valve for Horowpothana	Rathmalgahawewa ET Transmission Pump	Discharge Valve for Rathmalgahawewa	Kahatagasdigiliya Transmission Pump	Discharge Valve for Kathmalgahawewa	Chlorination Booster Pump	Exhaust Fan	Ventilation	Lighting	For GGE	For Control
Output (kW)	5.5	0.4	30	0.4	75	0.4	5.5	0.25	0.2	2	1	3
Starting Method	RSD	R	VSD	R	VSD	R	NR	NR	NR	F	F	F
MCCB (AF)	50	50	50	50	225	50	50	50	50	50	50	50
Earth Fault Protection	Install	Install	Install	Install	Install	Install	Install	Install	Install			
Ammeter	Install		Install		Install		Install		Install			
Run Hour Meter	Install		Install		Install		Install		Install			
Capacitor (kVar)												
Qty	1st Stage	2	2	2	2	2	2	2	2	1	1	1
	Final	3	3	3	3	3	2	2	2	1	1	1

Legend

NR	Direct On Line Starter
R	Reversible Starter
VSD	Variable Speed Driver
SS	Soft Starter
RSD	Closed Transition Star Delta Starter
F	MCCB Feeder

Voltage monitor shall be provided with the following features and interlocked with all motor starters.

1. Phase failure protection
2. Supply voltage imbalance (adjustable)
3. Under and over voltage (adjustable)
4. Phase revers

PROJECT: Preparatory Study for Anuradhapura North Integrated Water Supply Project



JAPAN INTERNATIONAL COOPERATION AGENCY

TITLE:

HOROWPOTHANA GROUND RESERVOIR SINGLE LINE DIAGRAM

CLIENT: NATIONAL WATER SUPPLY & DRAINAGE BOARD



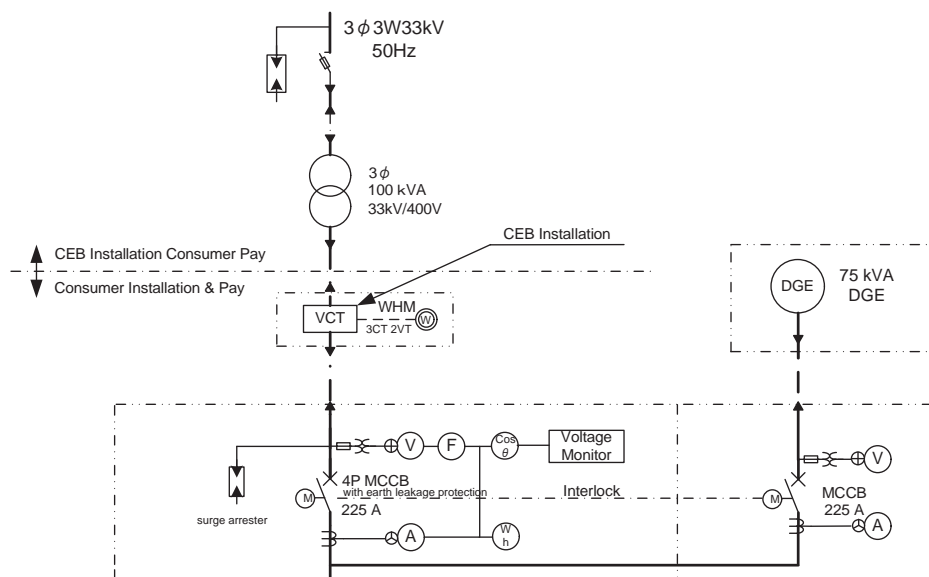
CONSULTANTS: NJS CONSULTANTS CO., LTD. - JAPAN
NIHON SUIDO CONSULTANTS CO., LTD. - JAPAN



REV.	DESCRIPTION	DATE	SIGN.

DESIGNED: AKIYAMA	DRAWN: AKIYAMA	PM: (CONSULTANT) MIWA	DRAWING NO.: WT&D/GR/E/04
CHECKED:	AGM: (P&D)	DGM: (P&D)	DATE: 15/09/2012
			SCALE: NON

From CEB Transmission Line



Load	Kahatagasdigiliya ET Transmission Pump	Discharge Valve for Kahatagasdigiliya	Chlorination Booster Pump	Exhaust Fan	Ventilation	Lighting	For GGE					For Control
Output (kW)	22	0.4	5.5	0.25	0.2	2	1					3
Starting Method	SS	R	NR	NR	NR	F	F					F
MCCB (AF)	50	50	50	50	50	50	50					50
Earth Fault Protection	Install	Install	Install	Install	Install							
Ammeter	Install		Install		Install							
Run Hour Meter	Install		Install		Install							
Capacitor (kVar)												
Qty	1st Stage	2	2	2	2	2	1	1				1
	Final	3	3	2	2	2	1	1				1

Legend

NR	Direct On Line Starter
R	Reversible Starter
VSD	Variable Speed Driver
SS	Soft Starter
RSD	Closed Transition Star Delta Starter
F	MCCB Feeder

Voltage monitor shall be provided with the following features and interlocked with all motor starters.

1. Phase failure protection
2. Supply voltage imbalance (adjustable)
3. Under and over voltage (adjustable)
4. Phase revers

PROJECT: Preparatory Study for Anuradhapura North Integrated Water Supply Project



JAPAN INTERNATIONAL COOPERATION AGENCY

TITLE:

KAHATAGASDIGILIYA GROUND RESERVOIR SINGLE LINE DIAGRAM

CLIENT: NATIONAL WATER SUPPLY & DRAINAGE BOARD



CONSULTANTS: NJS CONSULTANTS CO., LTD. - JAPAN
NIHON SUIDO CONSULTANTS CO., LTD. - JAPAN



REV.	DESCRIPTION	DATE	SIGN.

DESIGNED: AKIYAMA	DRAWN: AKIYAMA	PM: (CONSULTANT) MIWA	DRAWING NO.: WT&D/GR/E/05
CHECKED:	AGM: (P&D)	DGM: (P&D)	DATE: 15/09/2012
			SCALE: NON