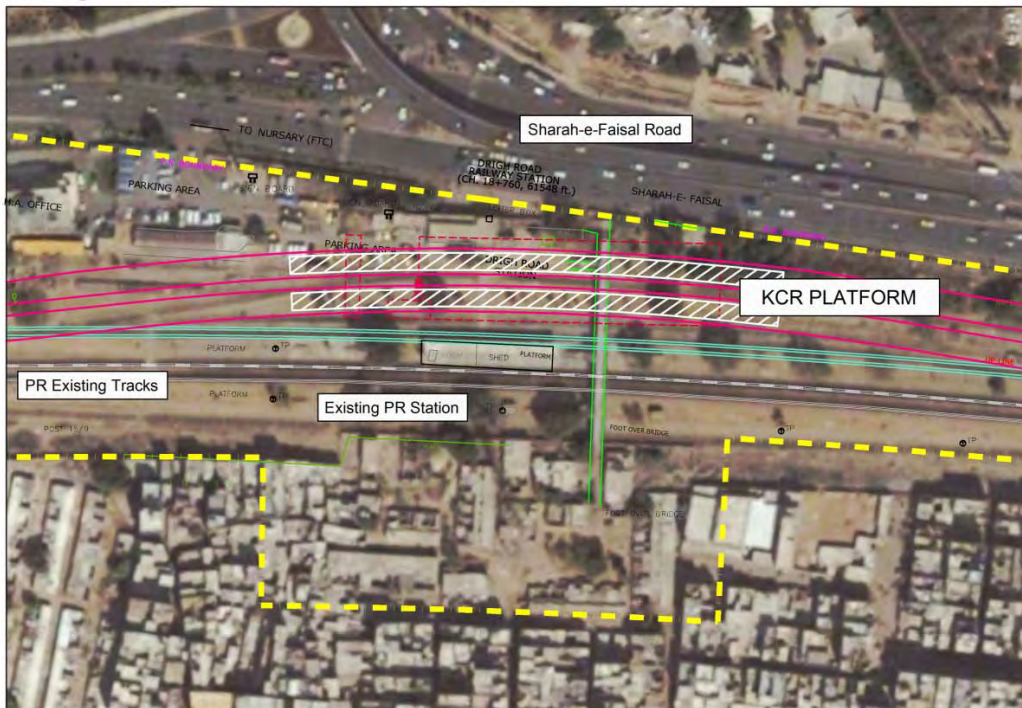


Appendix4-4 Review of Layout Plan Provided by KUTC and PR

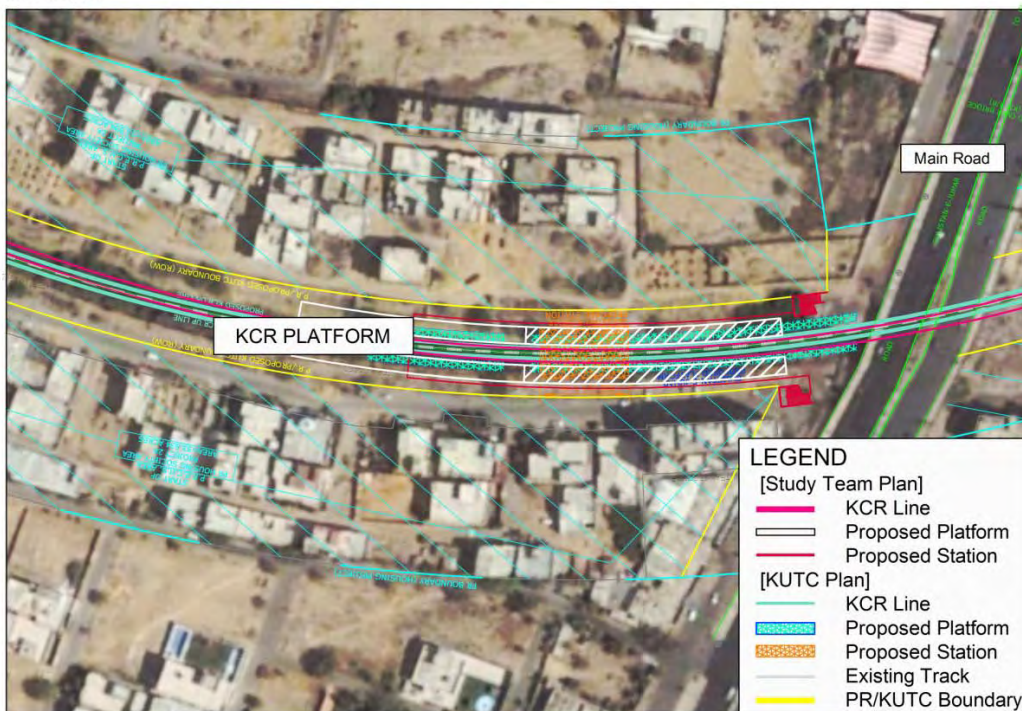
(1) Review of Station plan in RAP Report

The review results of station plan in RAP report (proposed by KUTC based on SAPROF-I) are shown in Figure 1 to Figure 12.

01. Drigh Road



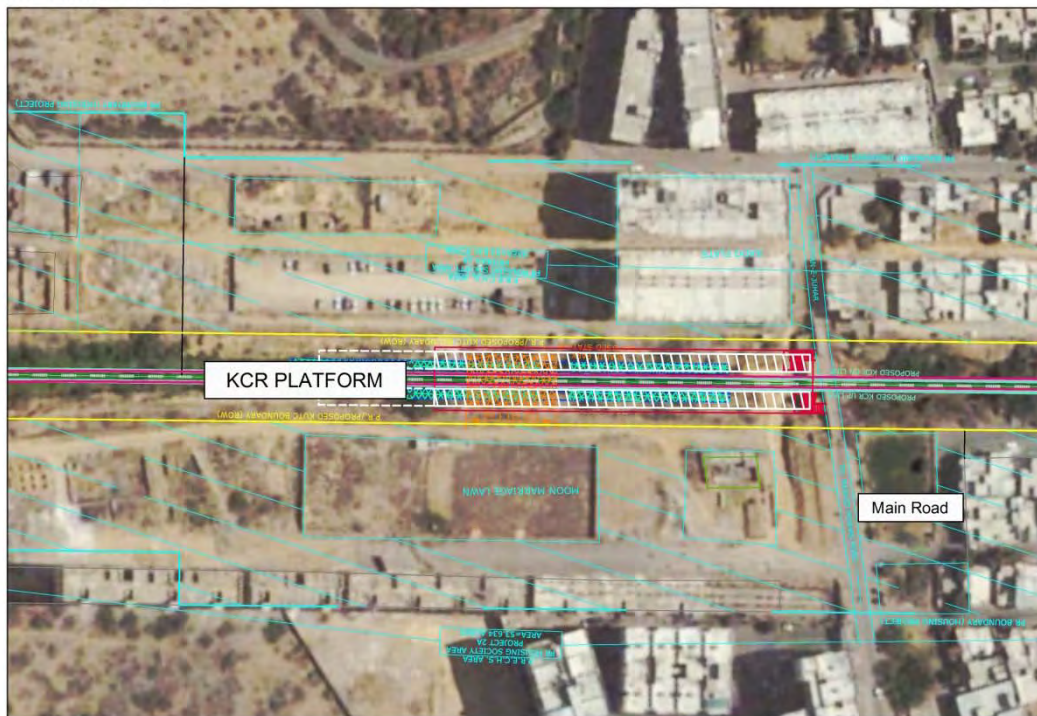
02. Johar



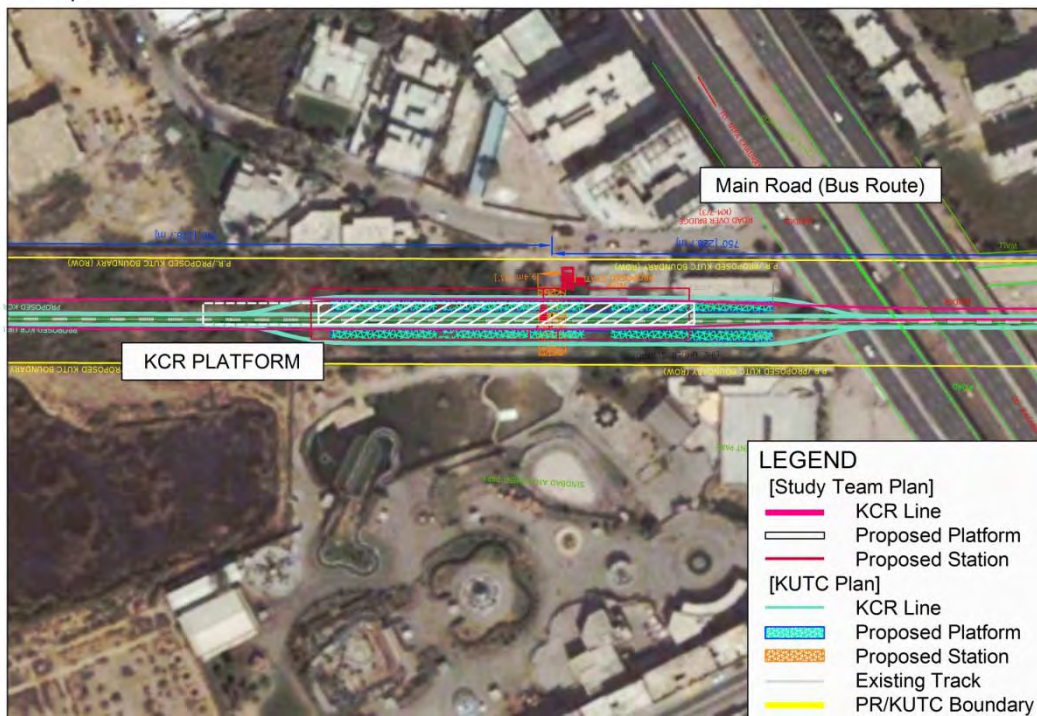
Source; JICA Study Team

Figure 1 Station Plan Review (1), (2)

03. Aladin Park



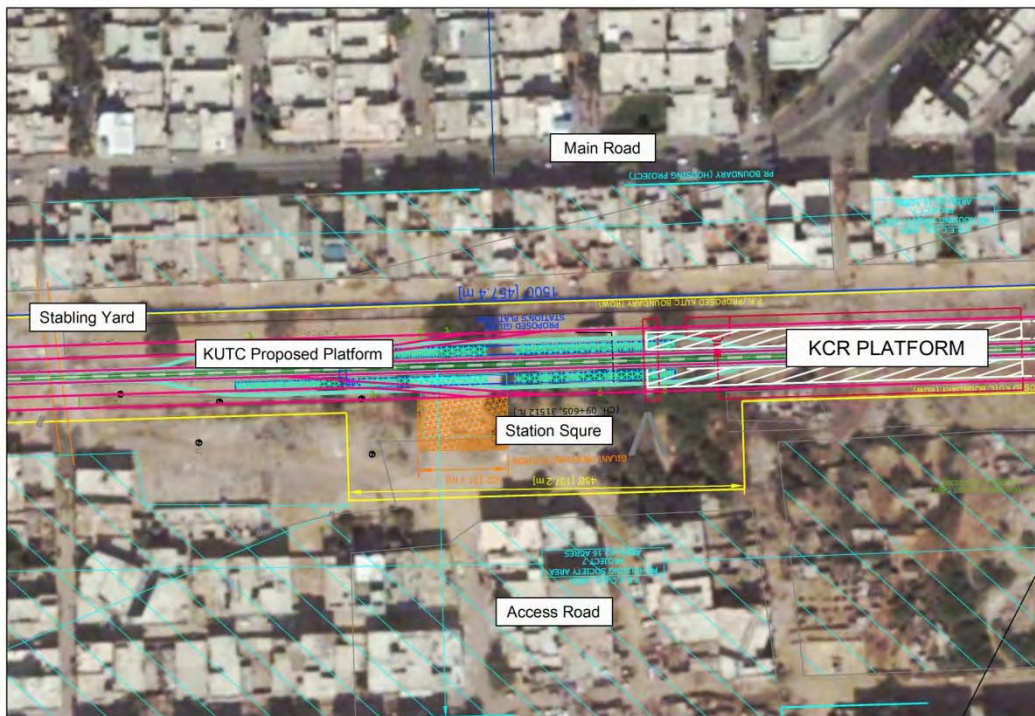
04. Nipa



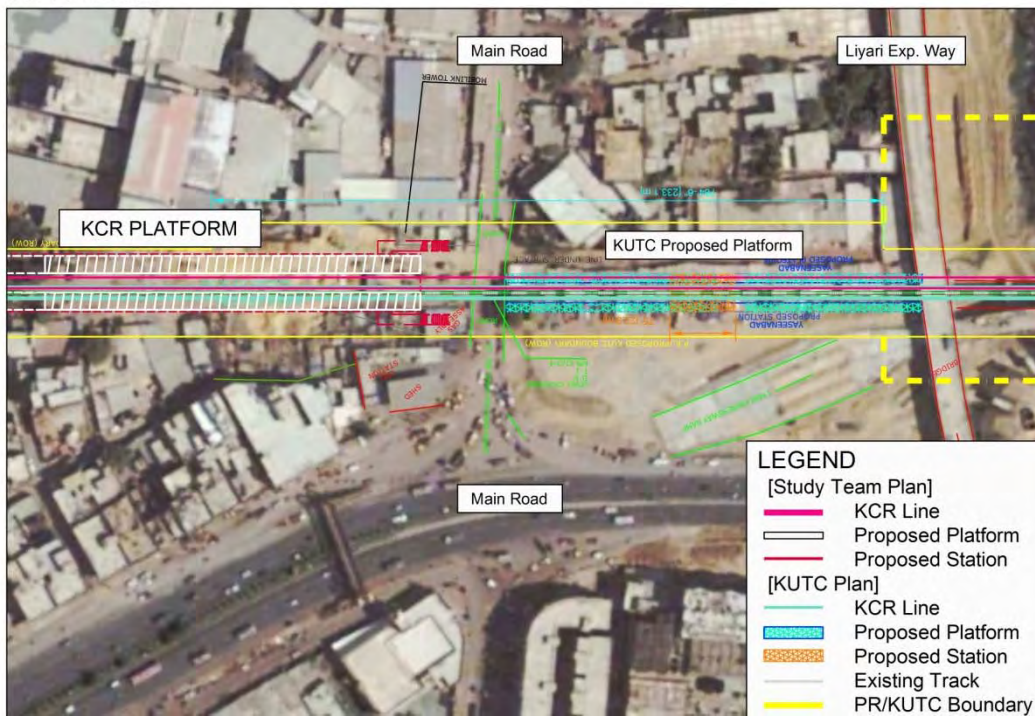
Source; JICA Study Team

Figure 2 Station Plan Review (3), (4)

05. Gilani



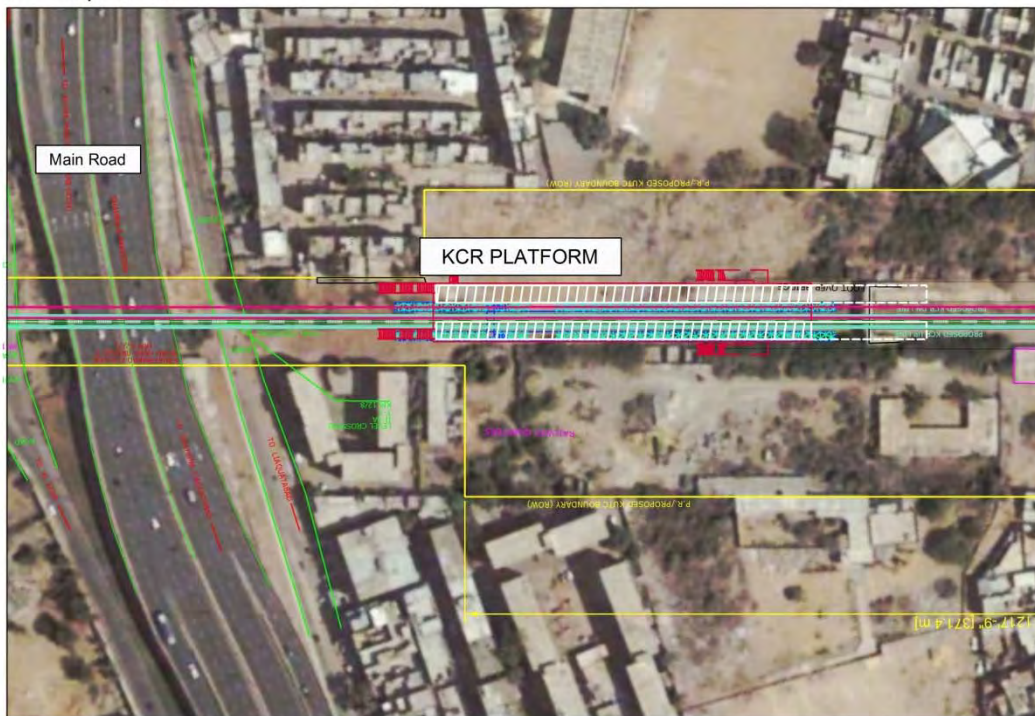
06. Yasinabad



Source; JICA Study Team

Figure 3 Station Plan Review (5), (6)

07. Liaquatabad



08. North Nazimabad



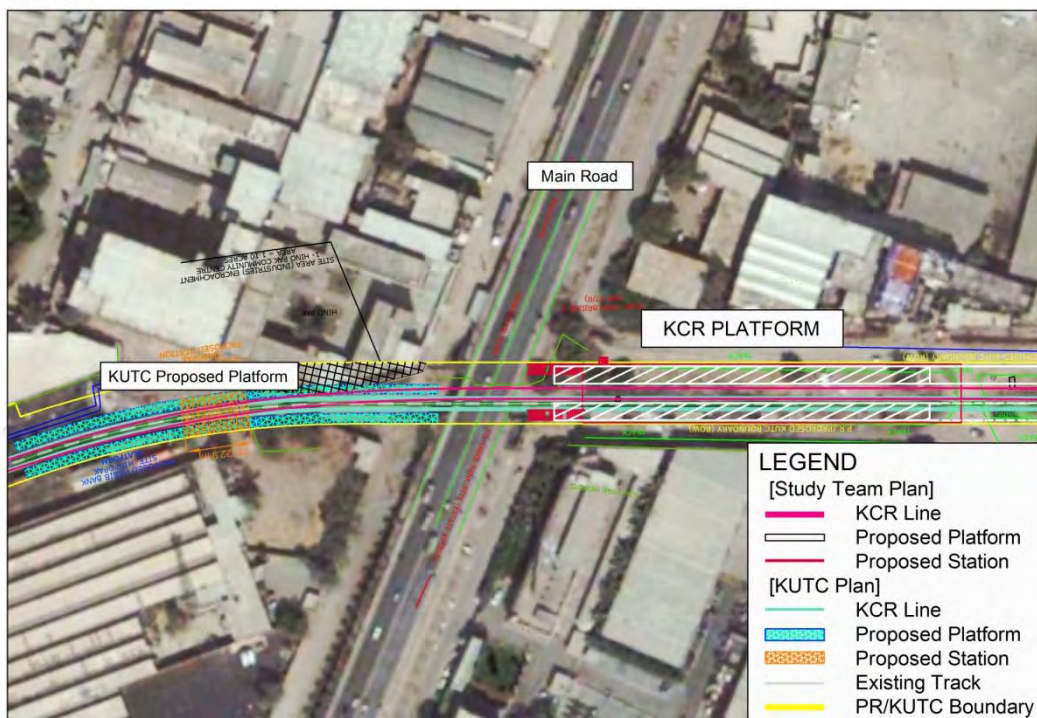
Source; JICA Study Team

Figure 4 Station Plan Review (7), (8)

09. Orangi



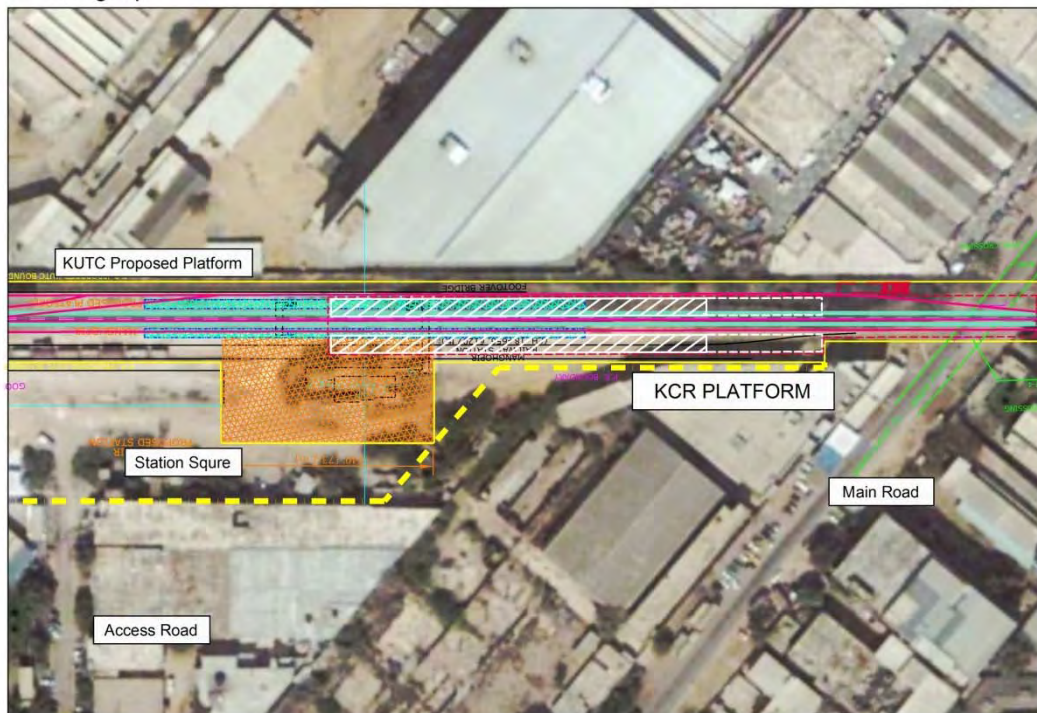
10. HBL



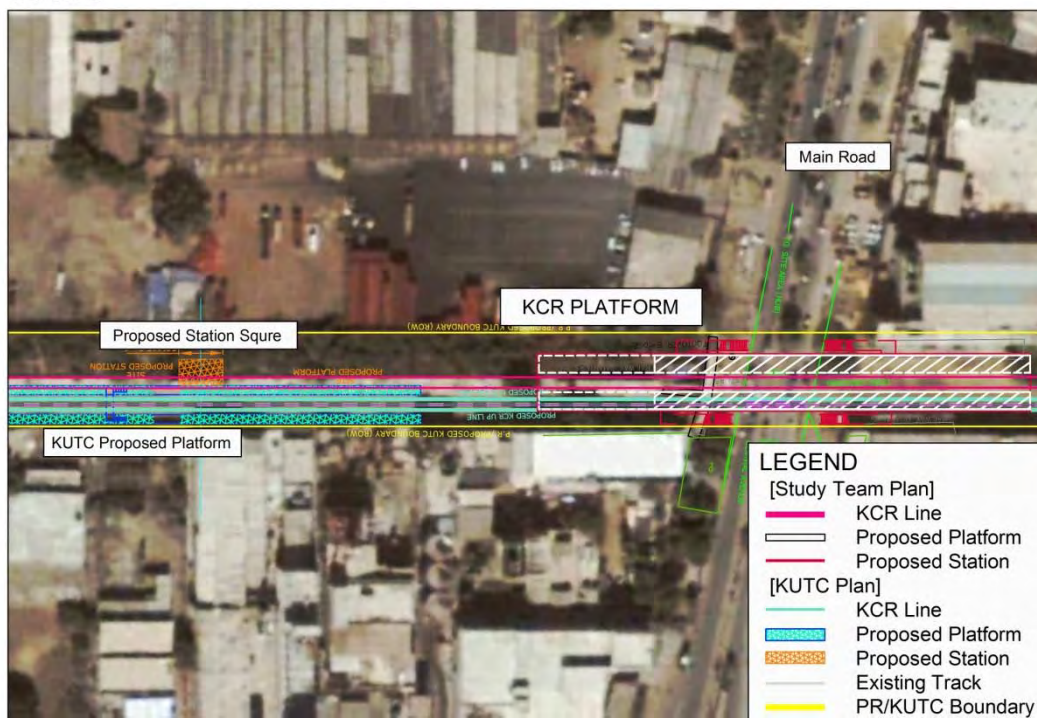
Source; JICA Study Team

Figure 5 Station Plan Review (9), (1)

11. Manghopir



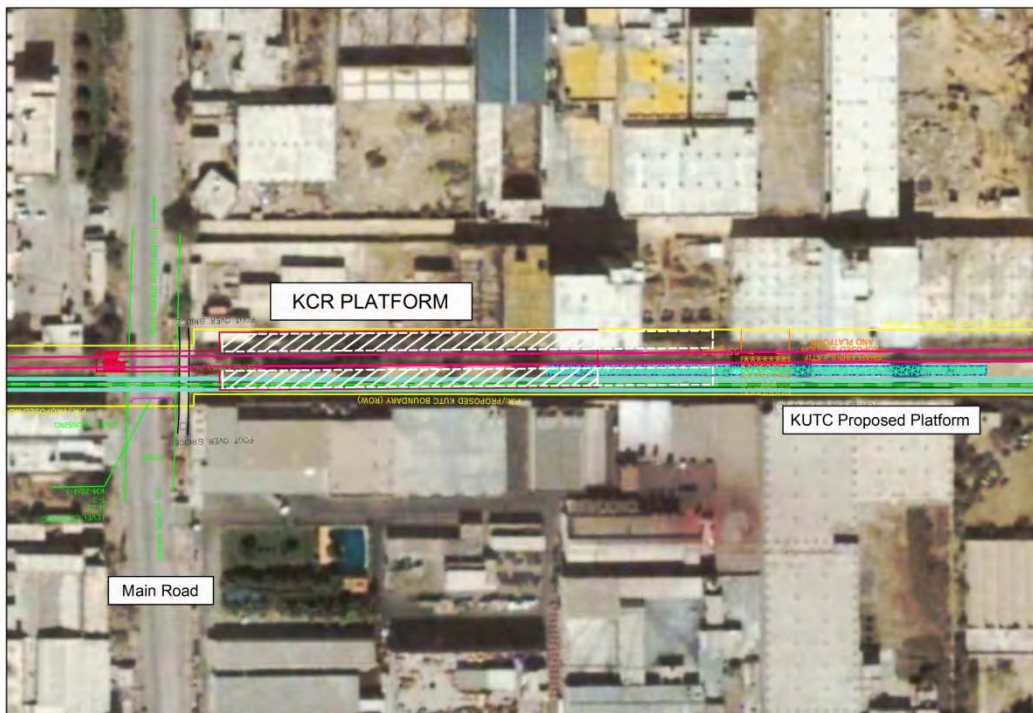
12. SITE



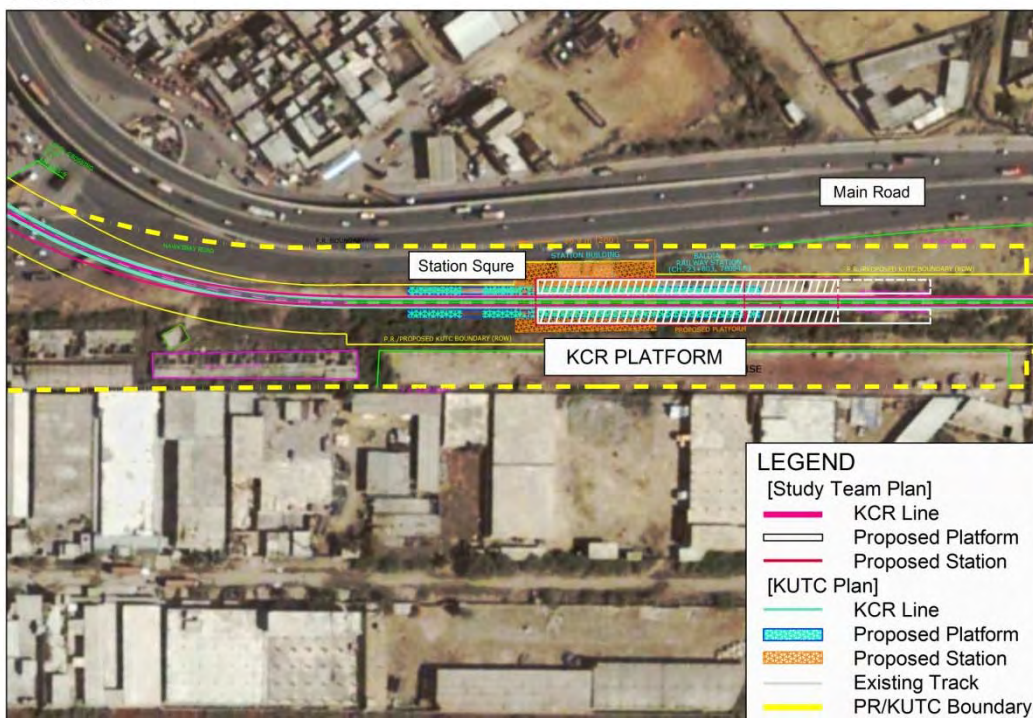
Source; JICA Study Team

Figure 6 Station Plan Review (11), (12)

13. Shah Abdul Latif



14. Baldia



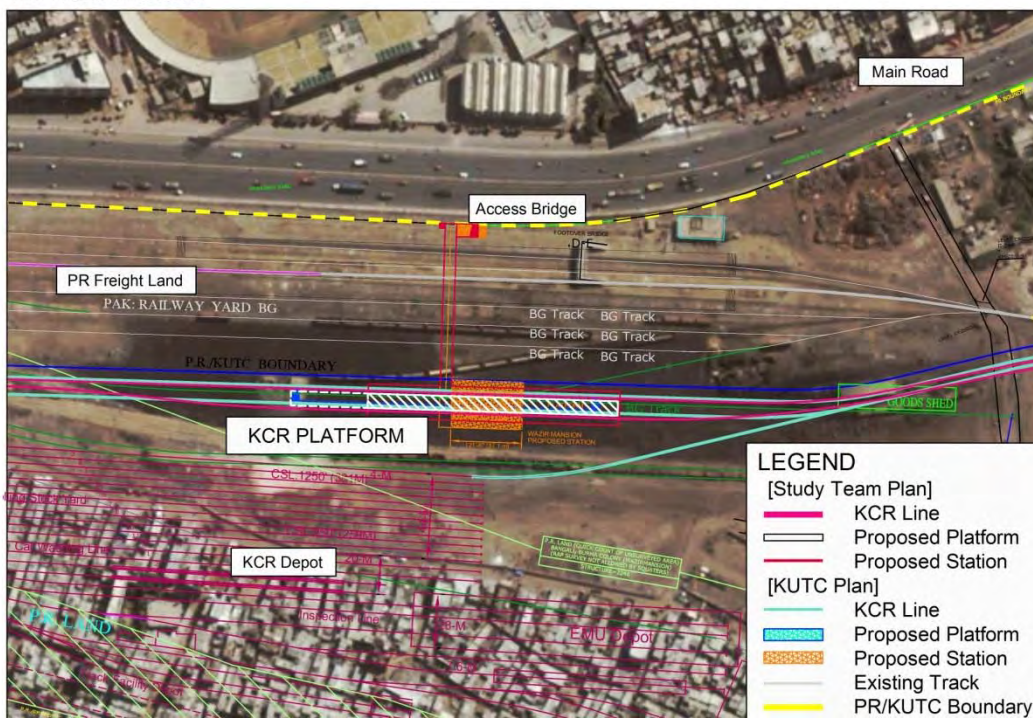
Source; JICA Study Team

Figure 7 Station Plan Review (13), (14)

15. Liyari



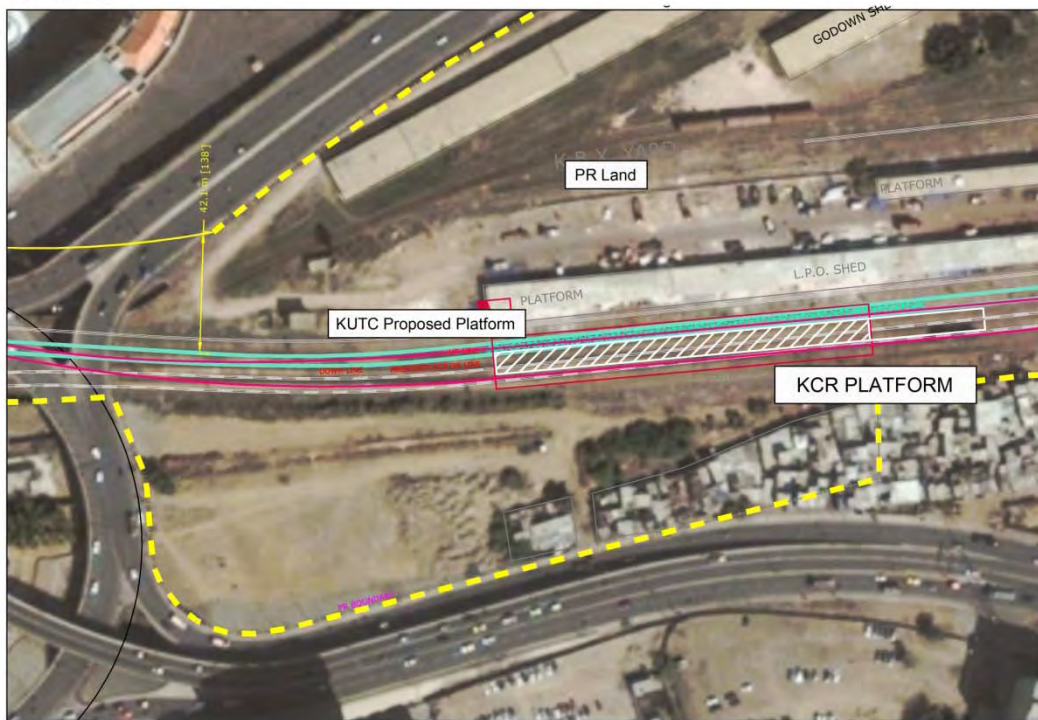
16. Wazir Mansion



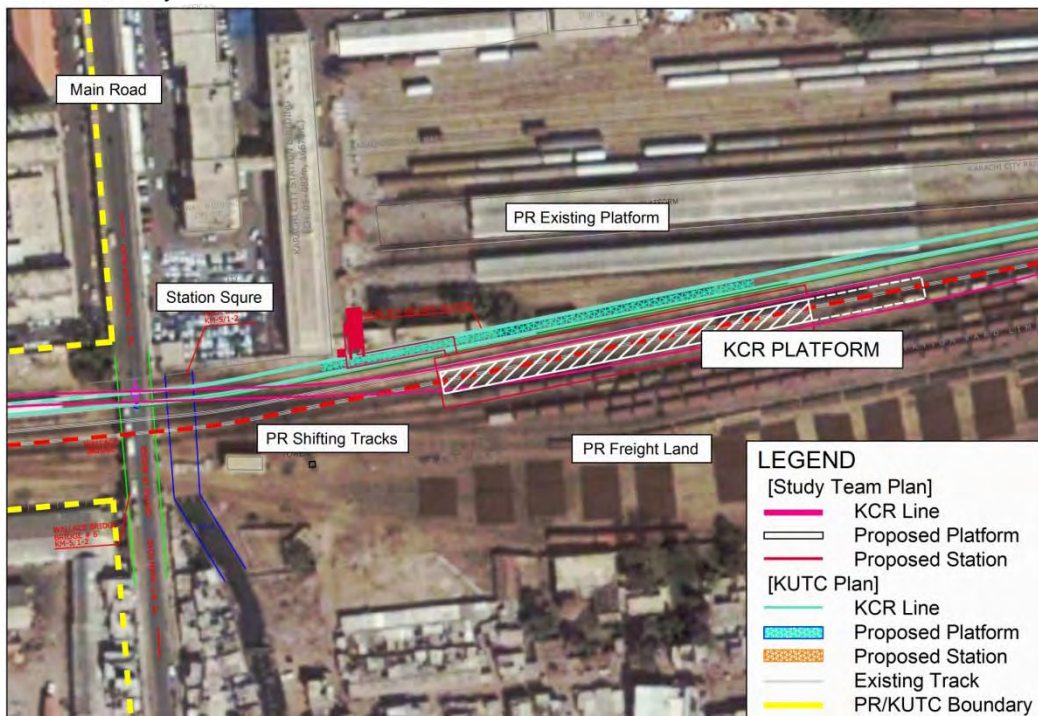
Source; JICA Study Team

Figure 8 Station Plan Review (15), (16)

17. Tower



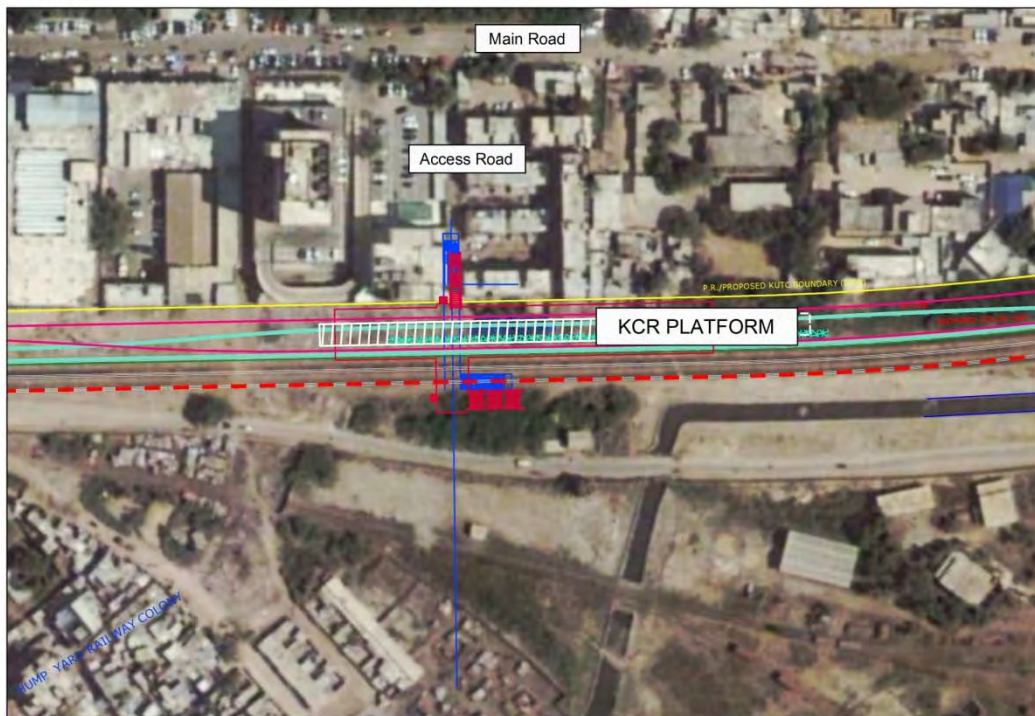
18. Karachi City



Source; JICA Study Team

Figure 9 Station Plan Review (17), (18)

19. DCOS



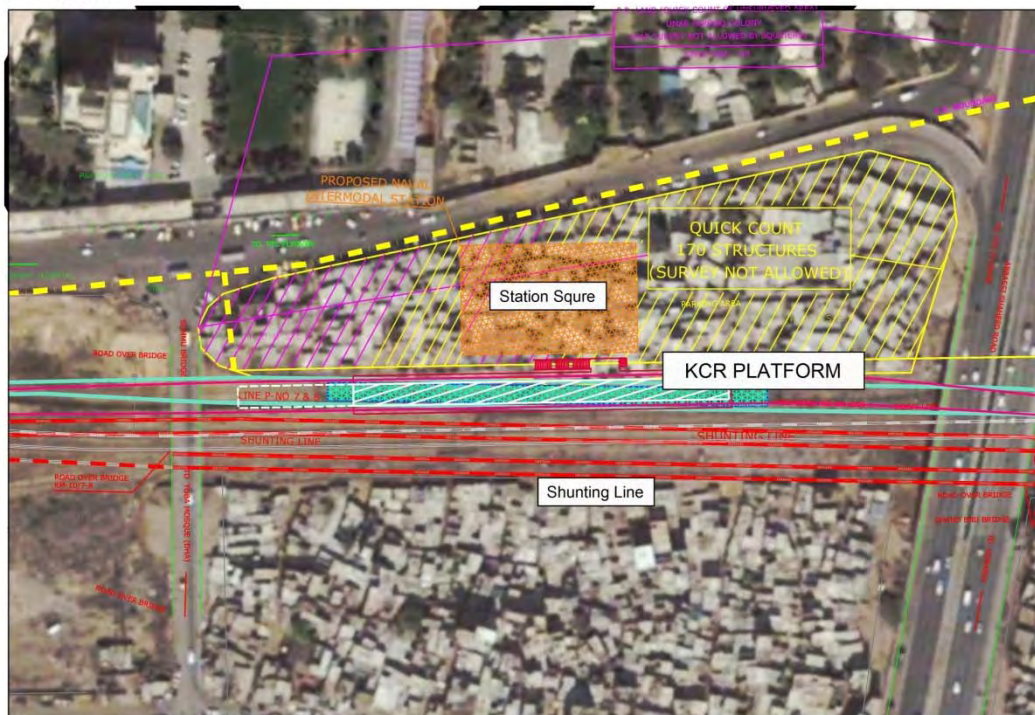
20. Karachi Cant



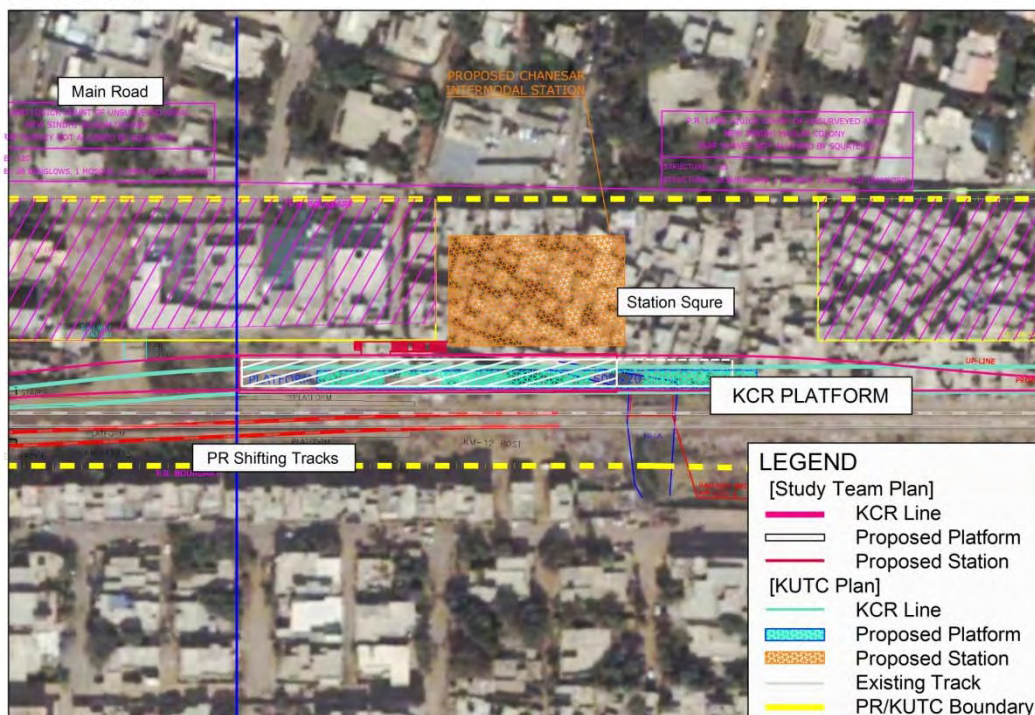
Source; JICA Study Team

Figure 10 Station Plan Review (19), (20)

21. Naval



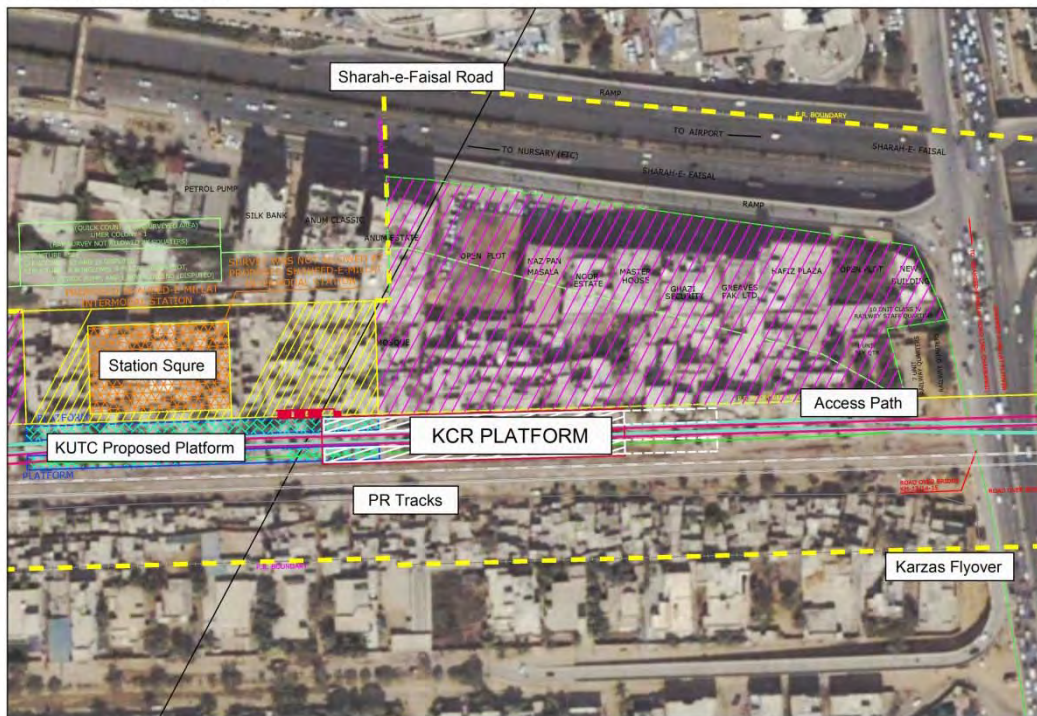
22. Chanesar



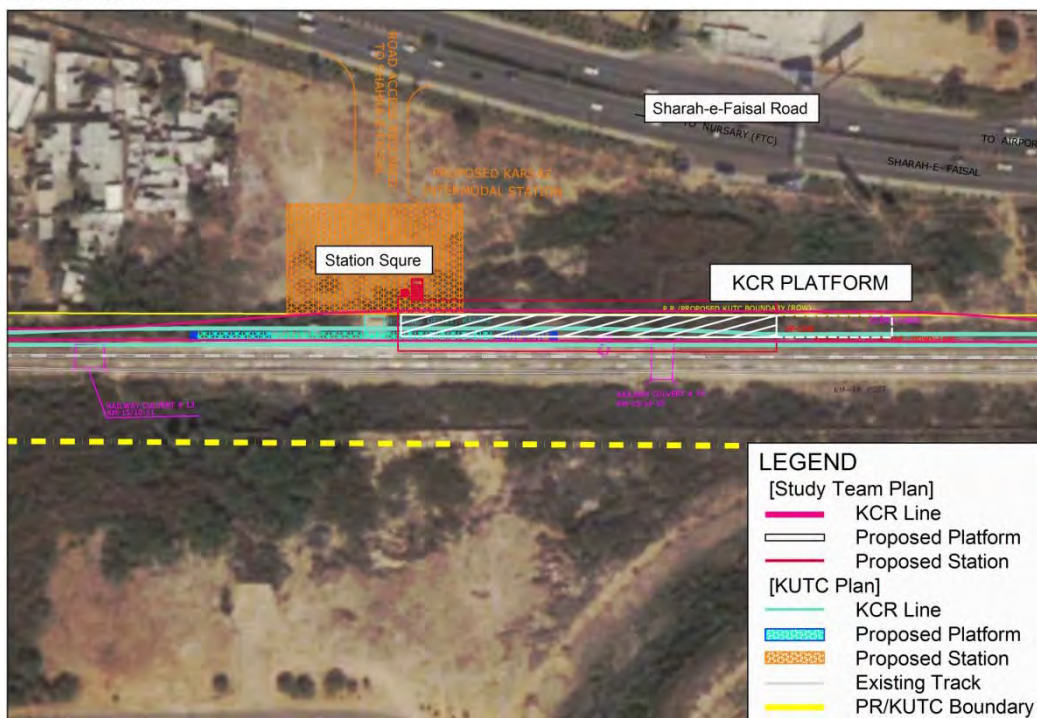
Source; JICA Study Team

Figure 11 Station Plan Review (21), (22)

23. Shaheed-e-Millat



24. Karzas Halt



Source; JICA Study Team

Figure 12 Station Plan Review (23), (24)

(2) Review of Drawings Prepared by PR

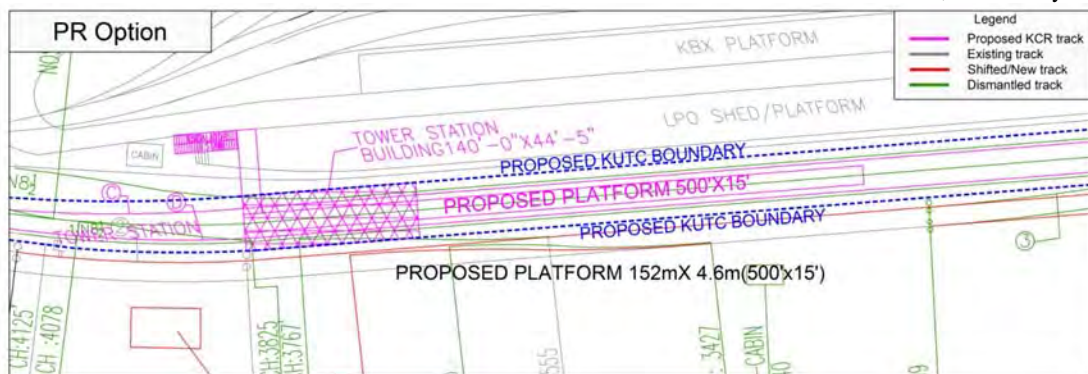
JICA Study Team has received some documents/drawings from PR through KUTC. These PR drawings indicate that PR existing tracks are demolished and rebuilt due to KCR installation. Since the drawings have no location information (i.e. coordination), JICA Study Team reviewed the drawings “relatively” and showed revised KCR alignment on the same drawings as shown in Figure 13 to Figure 21.

The review shows almost all stations at parallel section have land shortage problem as shown in Table 1.

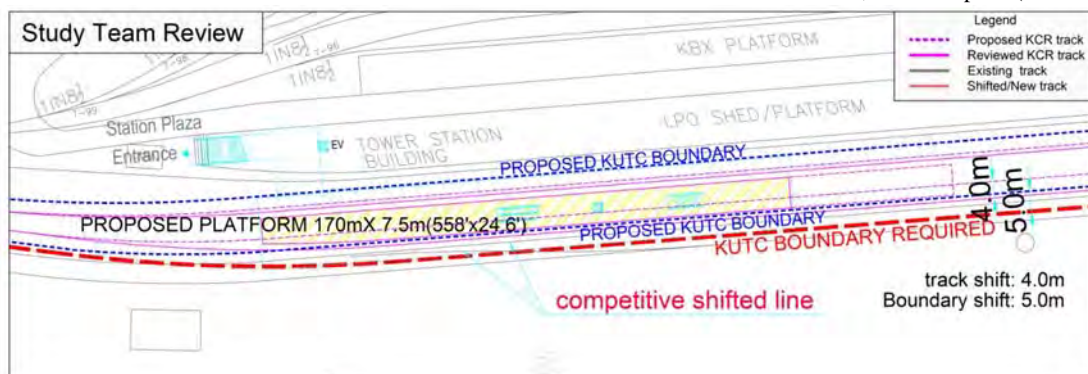
Table 1 Summary of Review in Parallel Section on PR Drawings

Station	Review
Tower	Land shortage as PR planned insufficient platform width
Karachi City	Land shortage as PR planned insufficient platform width
DCOS	Platform width to be modified
Karachi Cantt.	To be finalized based on site survey
Naval	To be finalized based on site survey
Chanesar	KCR facilities be out of proposed boundary
Shaheed-e-Millat	To be finalized based on site survey
Karsaz Halt	KCR facilities be out of proposed boundary
Drigh Road	To be finalized based on the site survey

Source; JICA Study Team

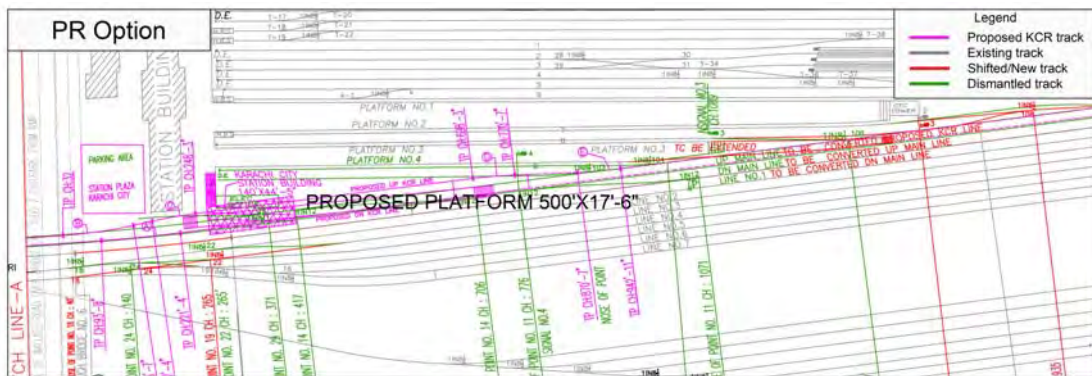


Source; RAP Report (Annex II)

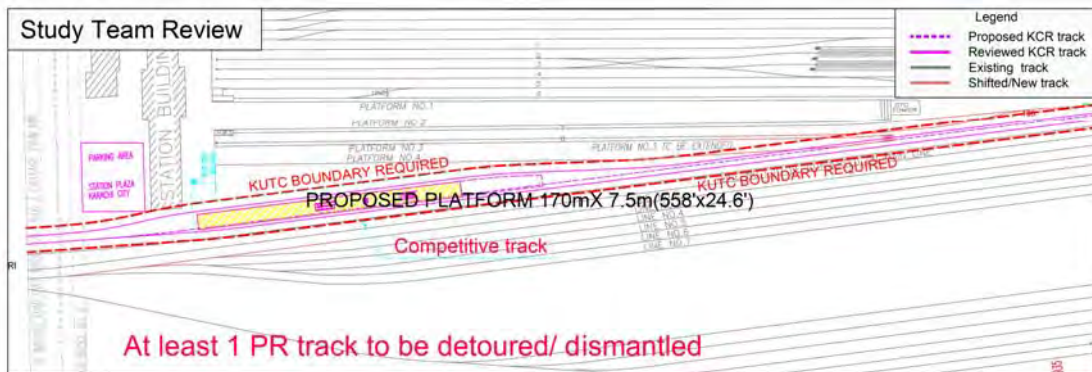


Source; JICA Study Team

Figure 13 PR Drawings Review (Tower Station)

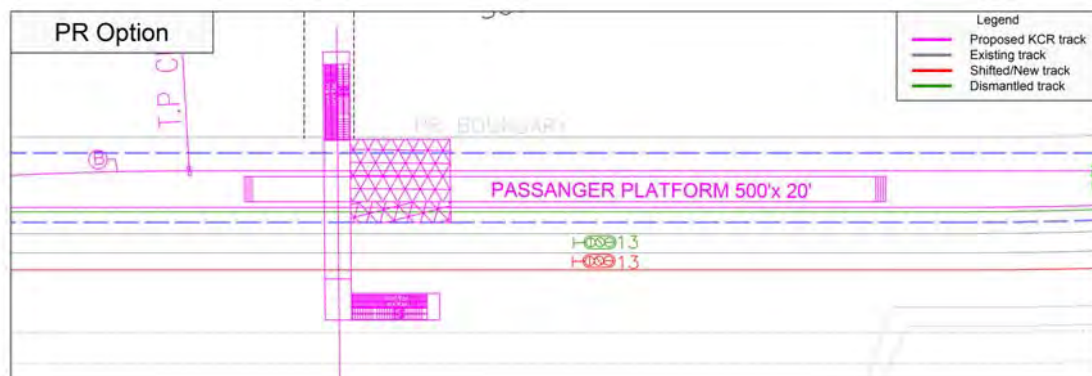


Source; RAP Report (Annex II)

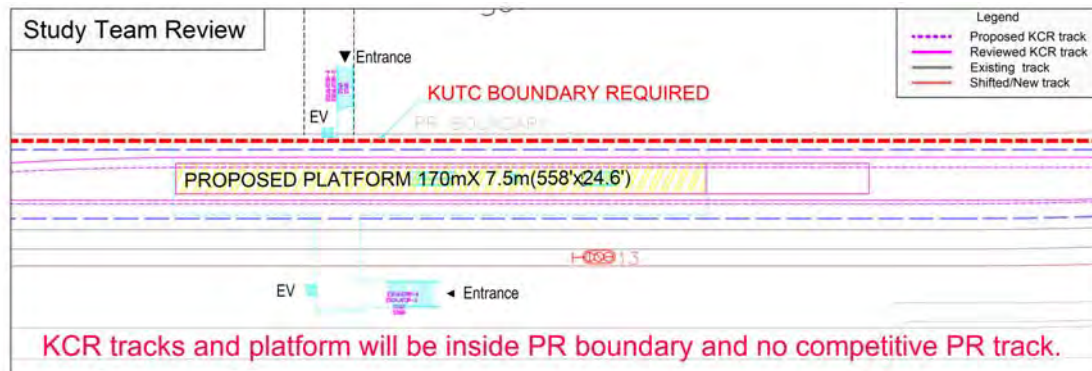


Source; JICA Study Team

Figure 14 PR Drawings Review (Karachi City Station)



Source; RAP Report (Annex II)

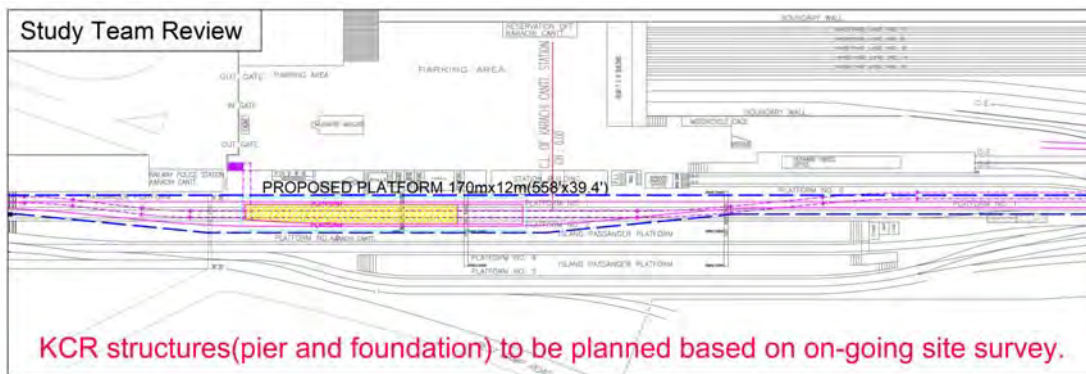


Source; JICA Study Team

Figure 15 PR Drawings Review (DCOS Station)



Source; RAP Report (Annex II)

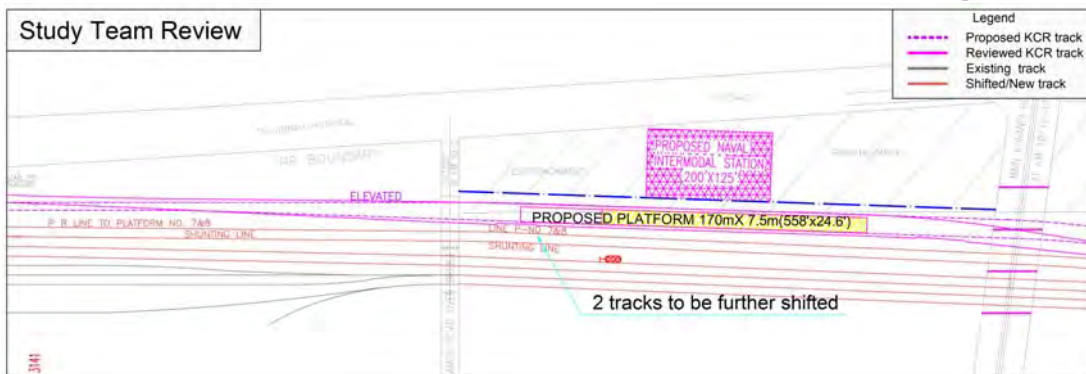


Source; JICA Study Team

Figure 16 PR Drawings Review (Karachi Cantt. Station)

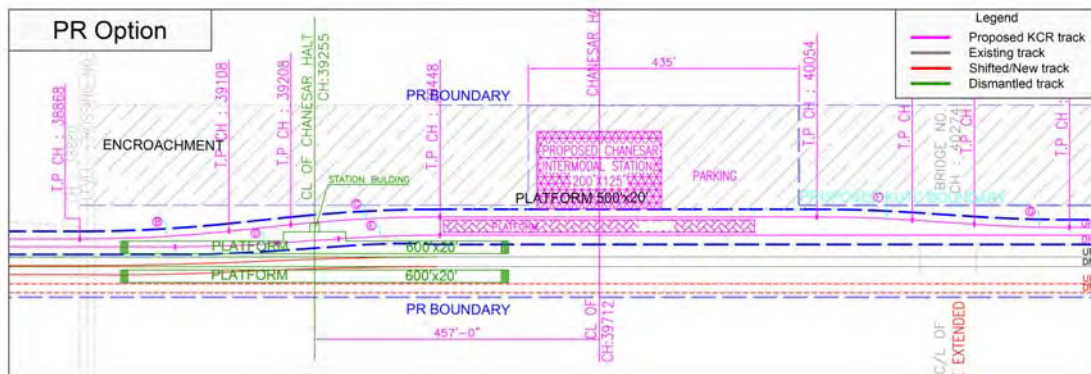


Source; RAP Report (Annex II)

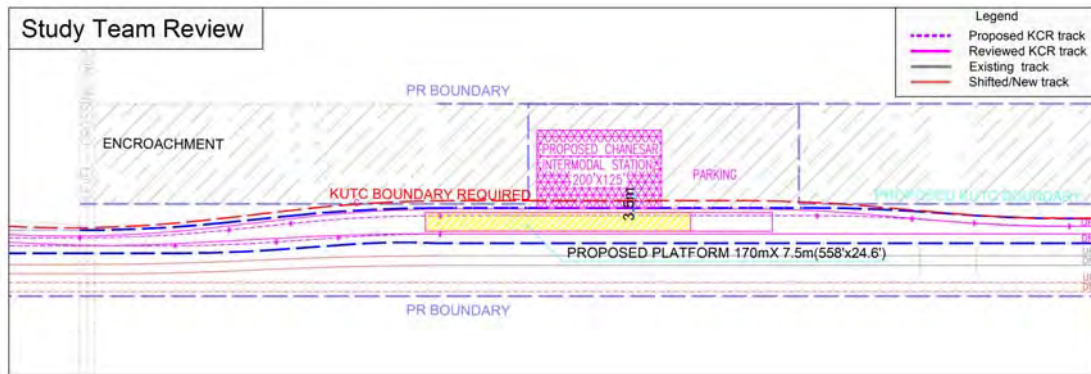


Source; JICA Study Team

Figure 17 PR Drawings Review (Naval Station)



Source; RAP Report (Annex II)



Source; JICA Study Team

Figure 18 PR Drawings Review (Chanesar Station)



Source; RAP Report (Annex II)



Source; JICA Study Team

Figure 19 PR Drawings Review (Shaheed-e-Millat Station)

