

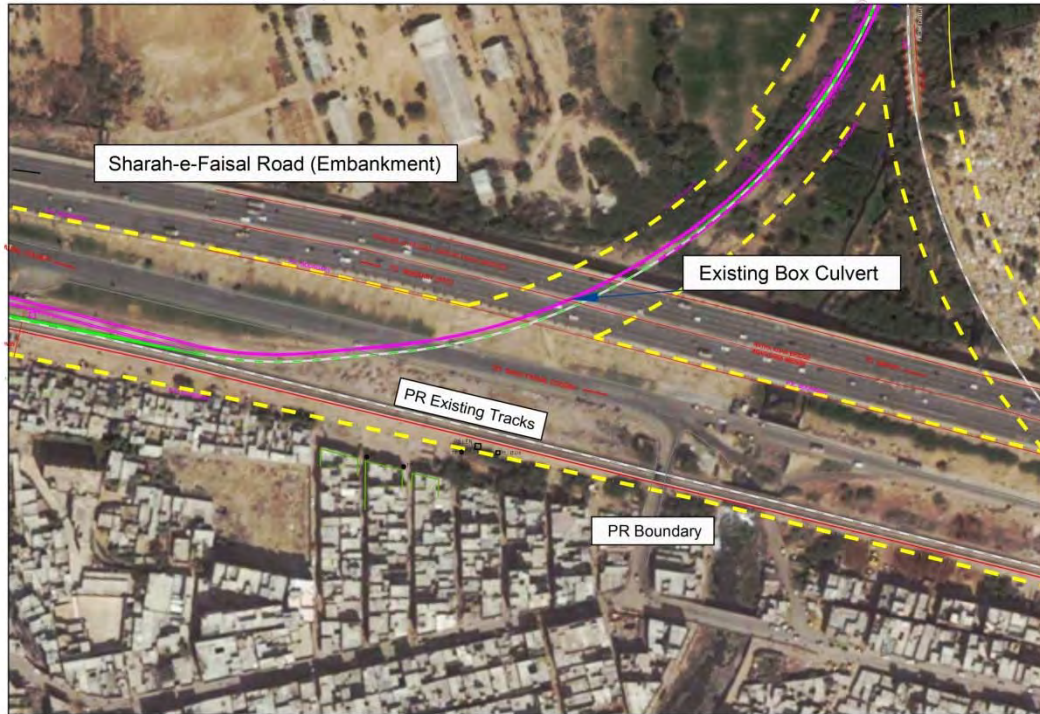
APPENDIX 4-3

Restrictions for Alignment Planning

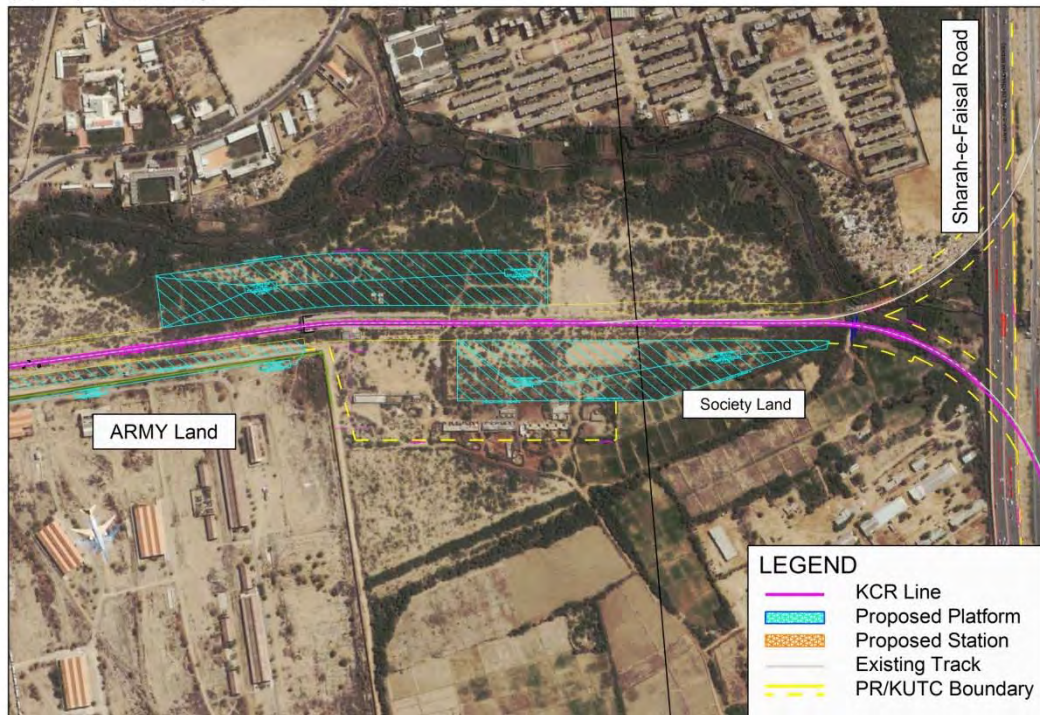
Appendix 4-3 Restrictions for Alignment Planning

1. Restrictions for Route Alignment

(1) Drigh Road R.O.B. (Underpass with Sharah-e-Faisal Road)



(2) Depot-Hill Army Land



Source; JICA Study Team

Figure 1 Restriction (1), (2)

(3) RASHID MINHAS R.O.B nearby Nipa Station



(4) LIYARI EXPRESS WAY Flyover



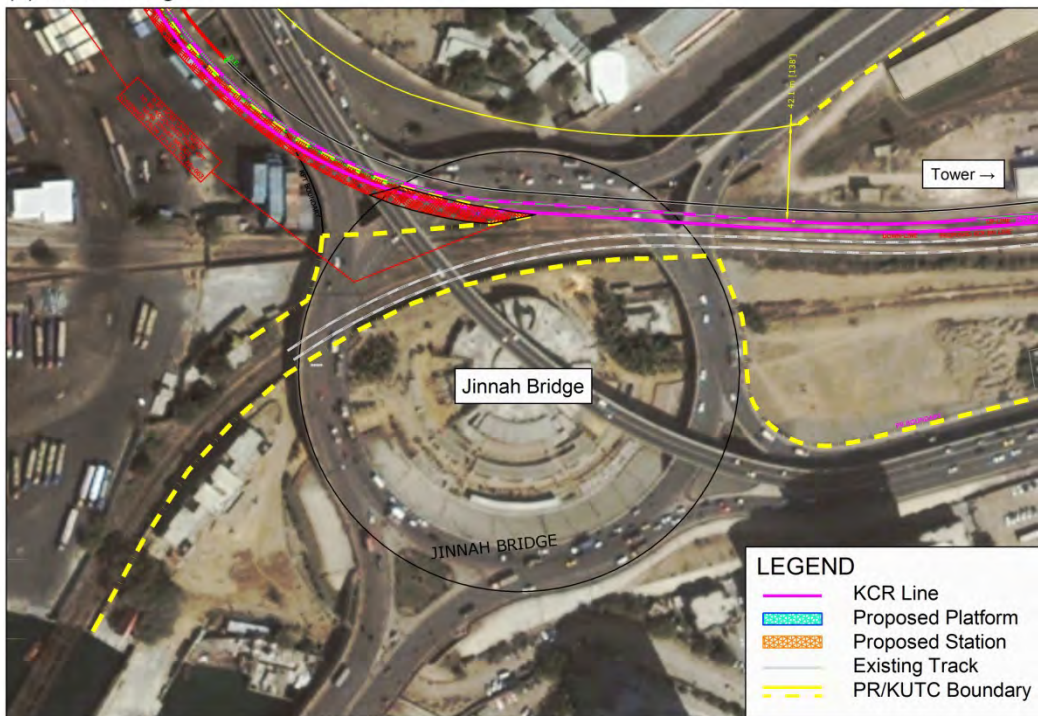
Source; JICA Study Team

Figure 2 Restriction (3), (4)

(5) Narrow section between Liyari and Wazir Mansion



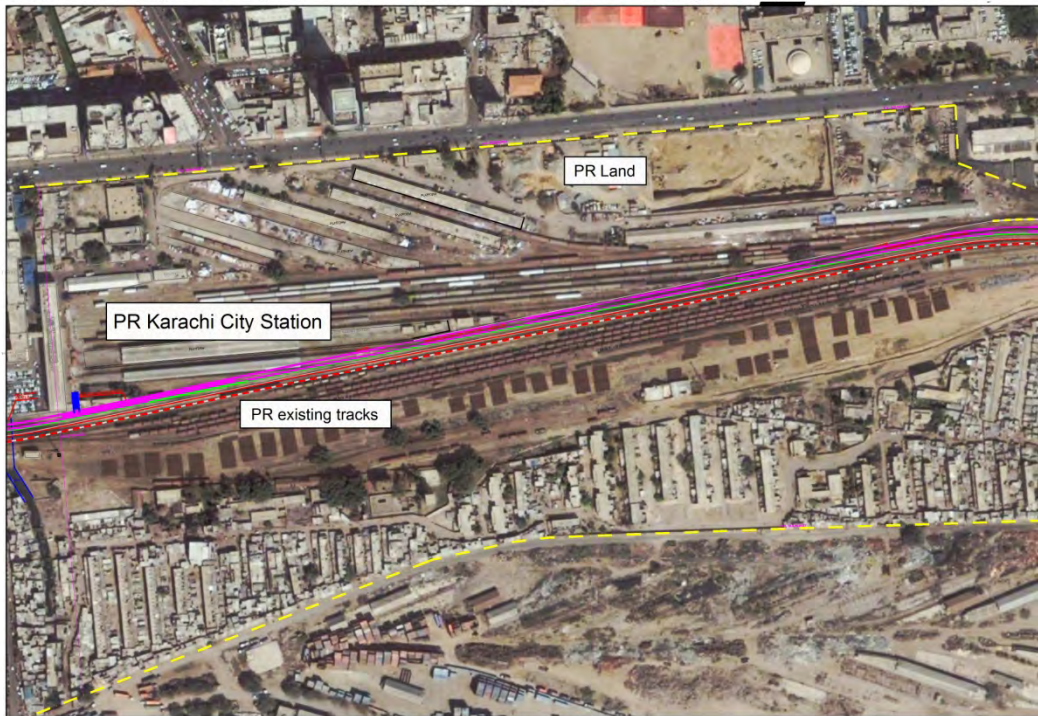
(6) Jinnah Bridge



Source; JICA Study Team

Figure 3 Restriction (5), (6)

(7) Karachi City Station (competitive section with PR/KCR existing tracks)



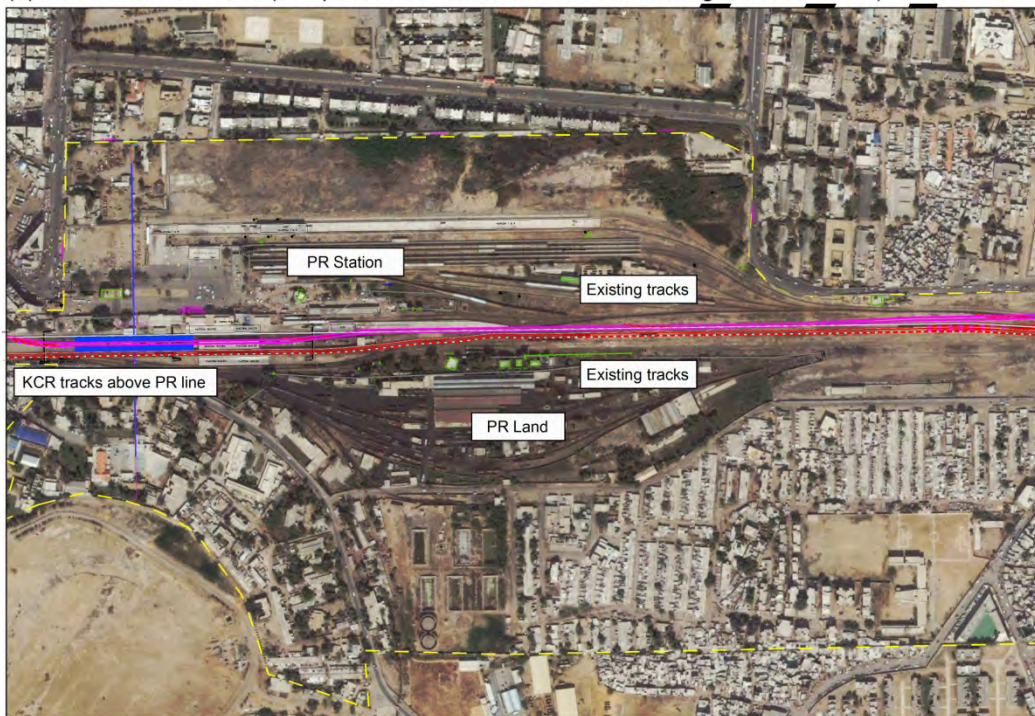
(8) Parallel section with PR line (around DCOS station)



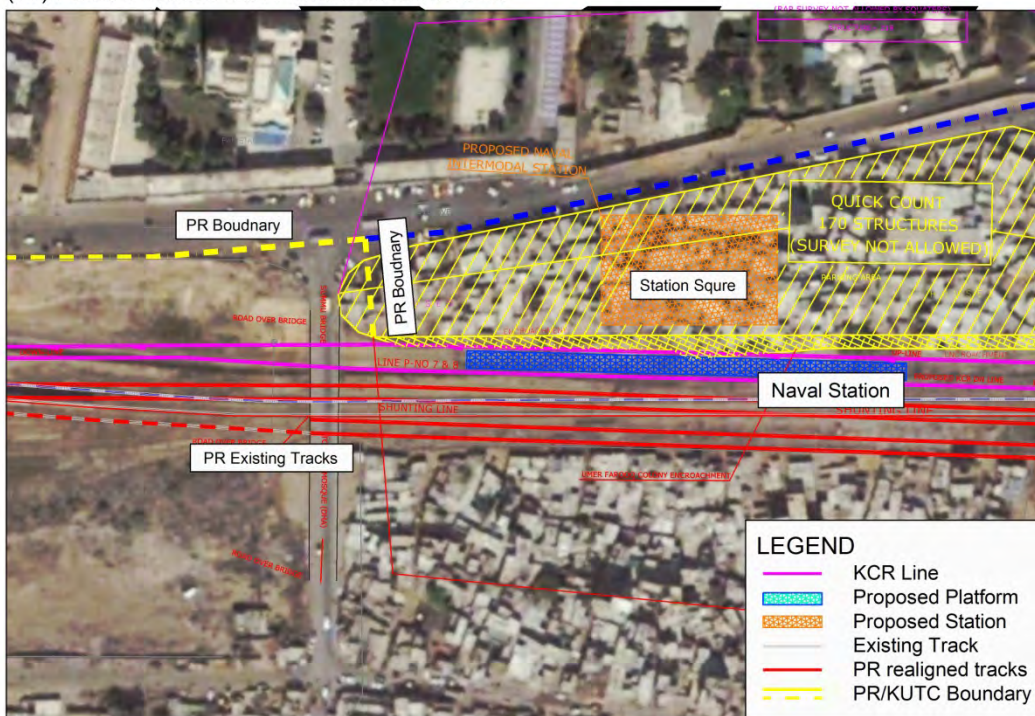
Source; JICA Study Team

Figure 4 Restriction (7), (8)

(9) Karachi Cant Station (competitive section with PR/KCR existing facilities/tracks)



(10) Parallel section with PR Line around Naval



Source; JICA Study Team

Figure 5 Restriction (9), (10)

(11) Parallel section with PR Line around Chanesar



(12) Parallel section with PR Line around Karsaz

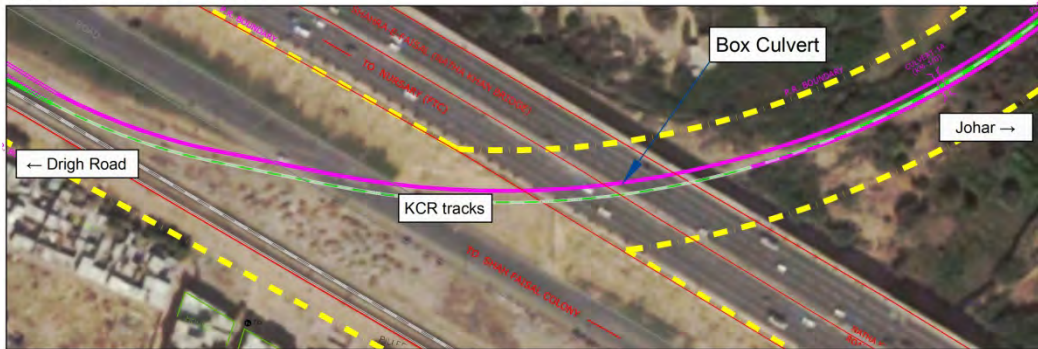


Source; JICA Study Team

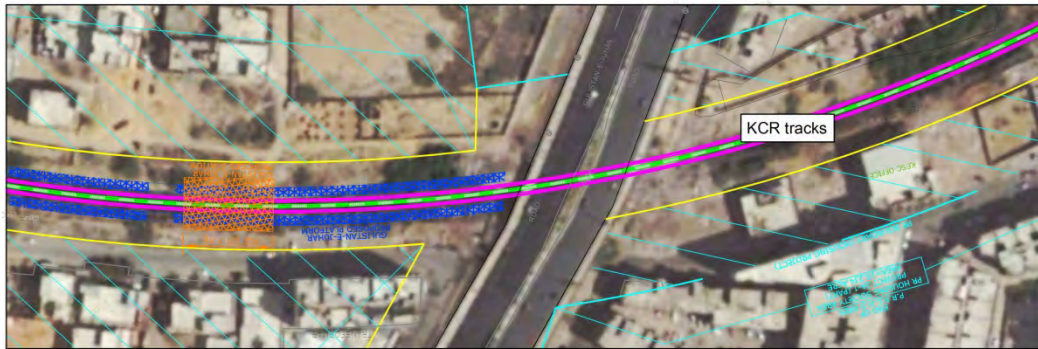
Figure 6 Restriction (11), (12)

2. Restrictions for vertical alignment

(1) DRIGH ROAD R.O.B



(2) GULISTAN-E-JOHAR R.O.B



(3) RASHID MINHAS R.O.B



(4) URDU COLLAGE R.O.B



Source; JICA Study Team

Figure 7 Crossing Restriction (1) ~ (4)

(5) Level Crossing NO.7



(6) LIYARI EXPRESS WAY & Level Crossing No.8



(7) Level Crossing NO.9



(8) KARIMABAD FLY OVER



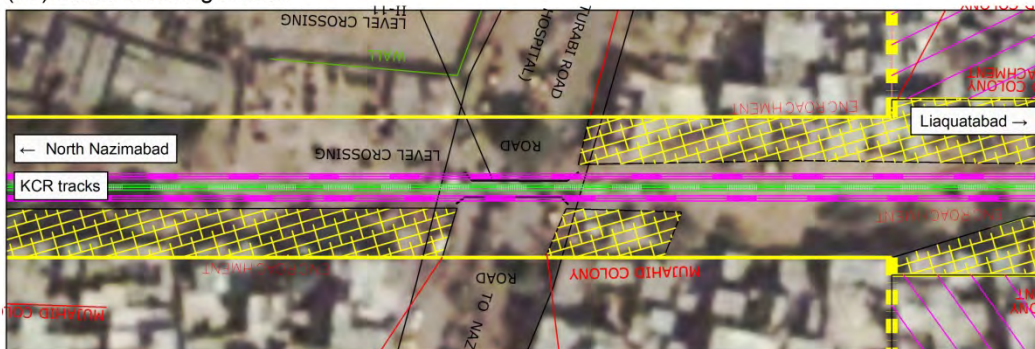
Source; JICA Study Team

Figure 8 Crossing Restriction (5) ~ (8)

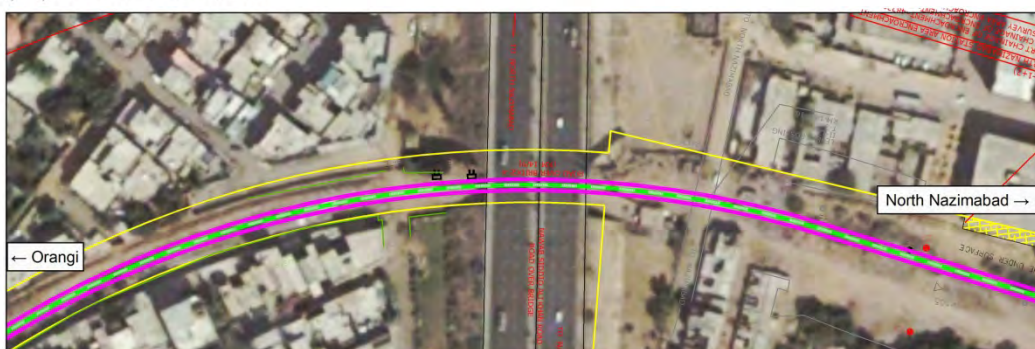
(9) Level Crossing NO.10



(10) Level Crossing NO.11



(11) NAZIMABAD R.O.B



(12) Level Crossing NO.13



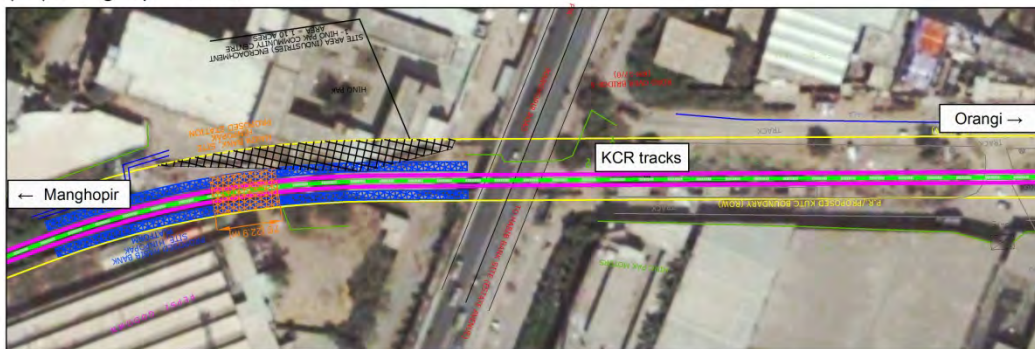
Source; JICA Study Team

Figure 9 Crossing Restriction (9) ~ (12)

(13) Level Crossing NO.14



(14) Manghopir R.O.B



(15) Level Crossing NO.16



(16) Level Crossing NO.17



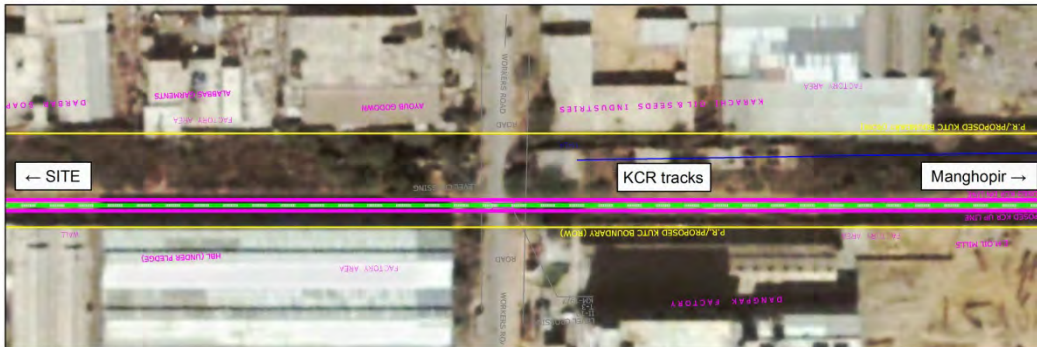
Source; JICA Study Team

Figure 10 Crossing Restriction (13) ~ (16)

(17) Level Crossing NO.18



(18) Level Crossing NO.19



(19) Level Crossing NO.20



(20) SHER SHAH R.O.B & Level Crossing NO.21



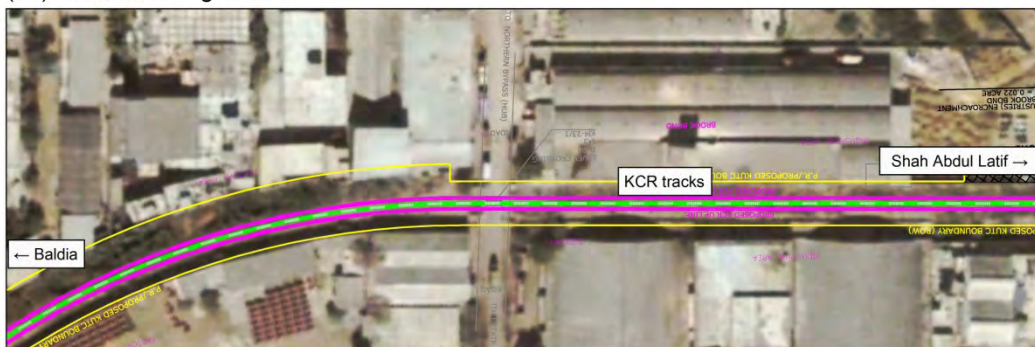
Source; JICA Study Team

Figure 11 Crossing Restriction (17) ~ (20)

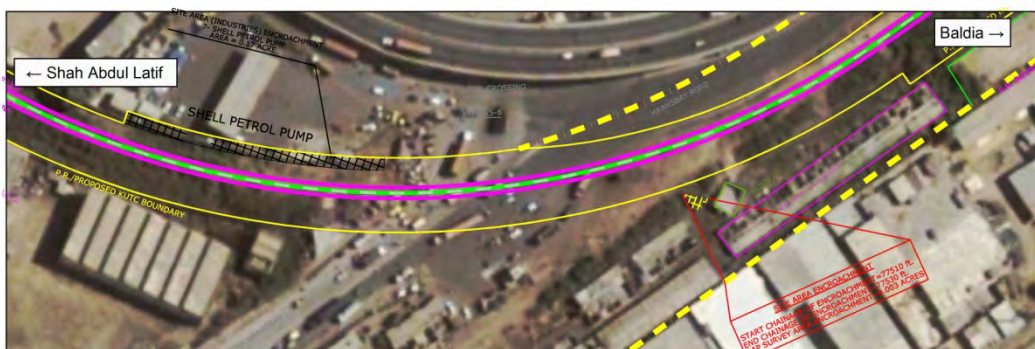
(21) Level Crossing NO.22



(22) Level Crossing NO.23



(23) Level Crossing NO.24



(24) ICI R.O.B.



Source; JICA Study Team

Figure 12 Crossing Restriction (21) ~ (24)

(25) Level Crossing NO.29



(26) JINNAH BRIDGE



(27) Level Crossing (MUMTAZ HASSAN ROAD, WOOD STREET)



(28) WALLACE R.O.B



Source; JICA Study Team

Figure 13 Crossing Restriction (25) ~ (28)

(29) Level Crossing NO.3



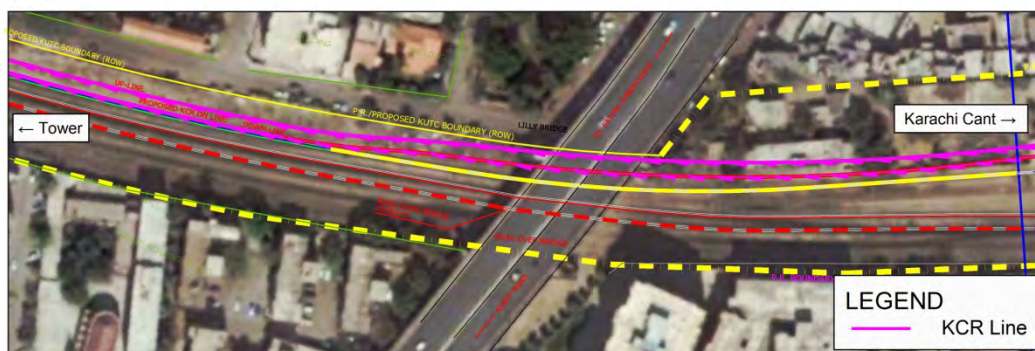
(30) SCANDLE POINT R.O.B



(31) QAUID-E-AWAM FLY OVER & CLIFTON R.O.B



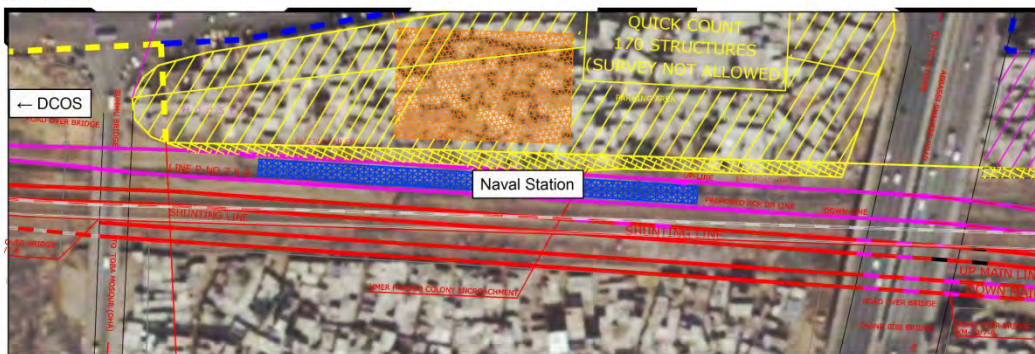
(32) LILLY R.O.B



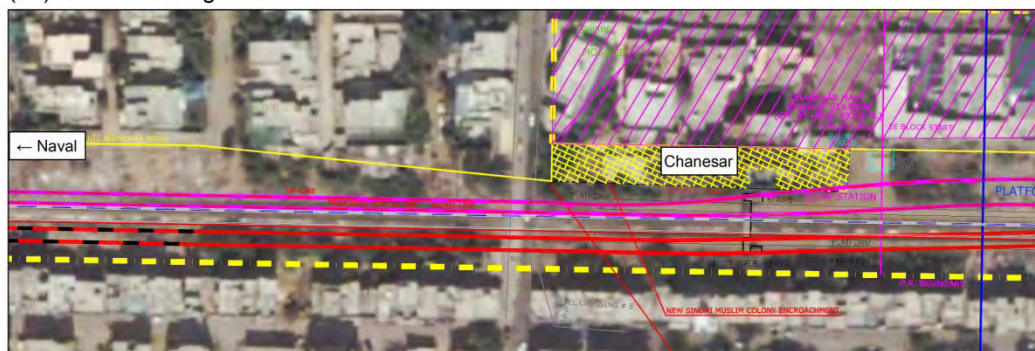
Source; JICA Study Team

Figure 14 Crossing Restriction (29) ~ (32)

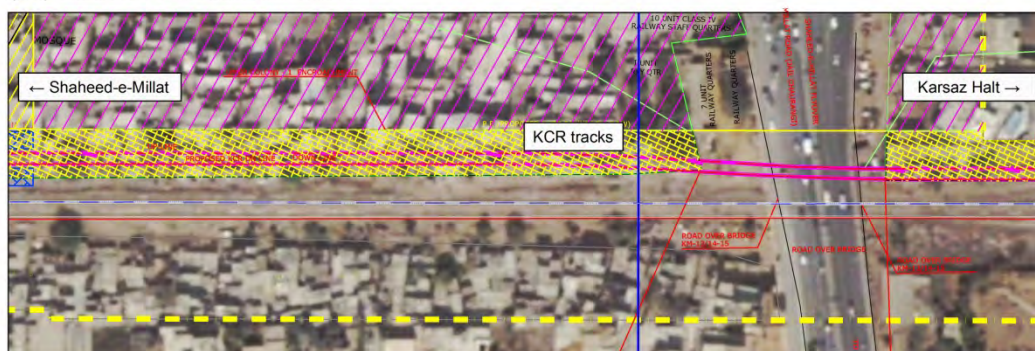
(33) SAMOO SHAHEED R.O.B, KORANGI R.O.B



(34) Level Crossing NO.5



(35) SHAHEED-E-MILLAT R.O.B



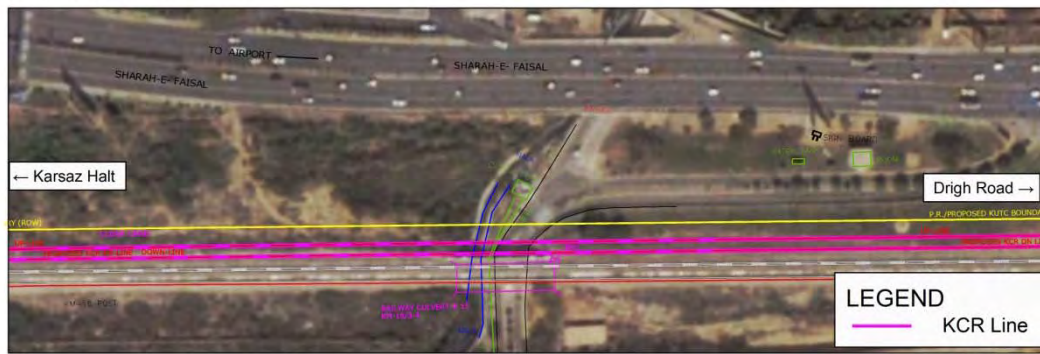
(36) DEPARURE YARD P.R. ST.



Source; JICA Study Team

Figure 15 Crossing Restriction (33) ~ (36)

(37) AIR FORCE R.O.B



Source; JICA Study Team

Figure 16 Crossing Restriction (37)

APPENDIX 4-4

Review of Layout Plan provided by KUTC and PR
