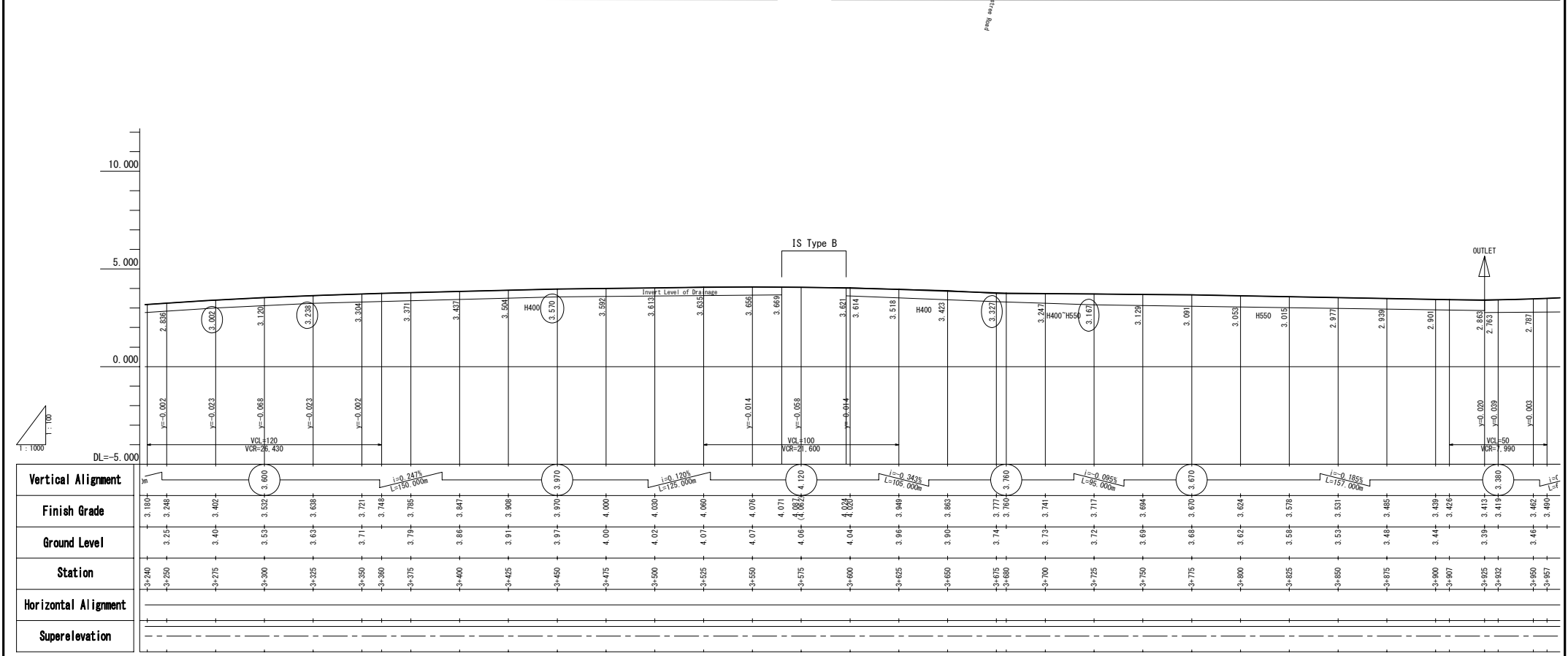
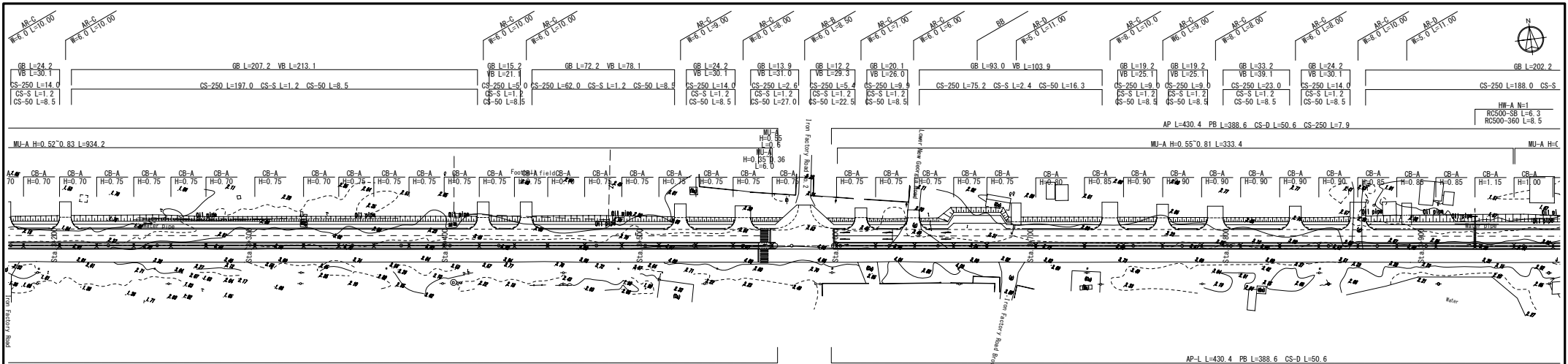


AP-1 L=1377.8 PR L=1226.8 CS-D L=166.9 PR-50 L=18.0

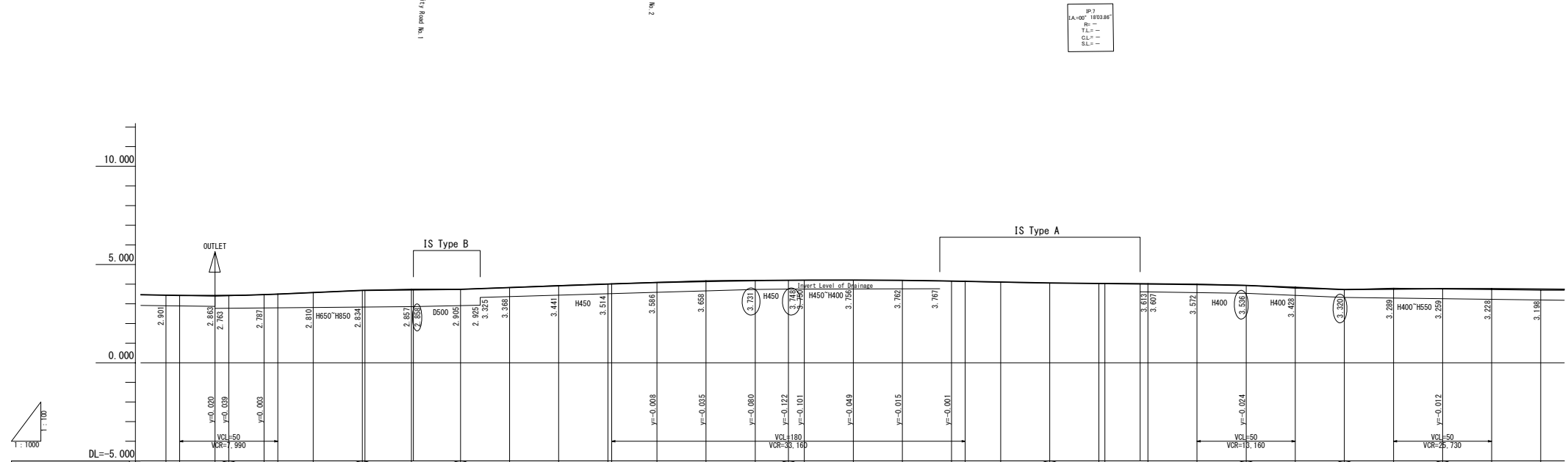
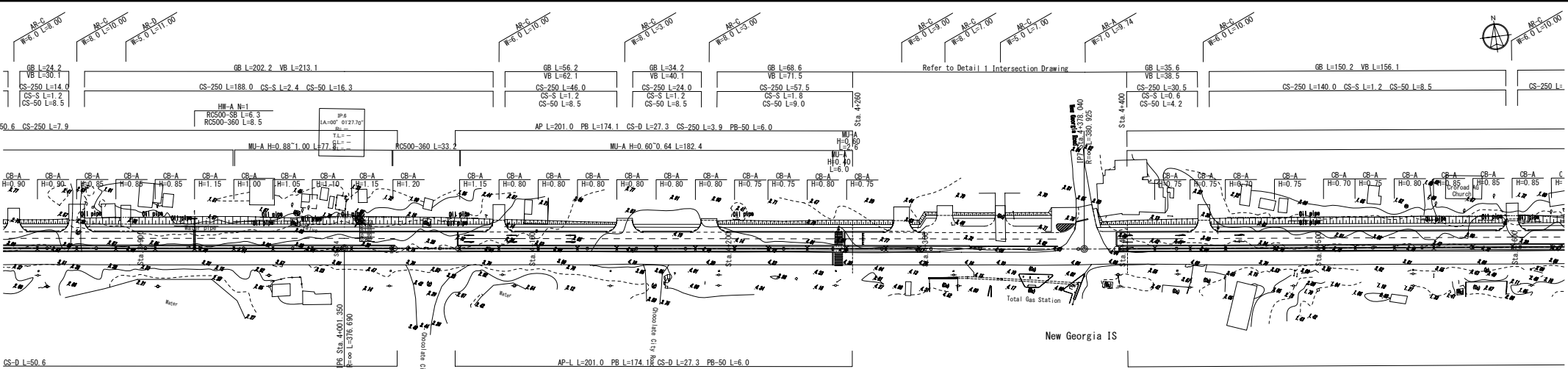
2-32

	Vertical Alignment	3.032	2.993	2.955	2.917	H400	2.878	2.840	2.815	2.780	2.690	2.590	2.558	2.526	Invest Level of Drainage	2.464	H400*H650	2.461	2.429	2.397	2.365	2.361	2.559	2.502	H400	2.446	2.389	2.333	2.284	H400*H500	2.307	2.346	2.397	2.500	H400	2.669	2.858	3.002	3.120				
	Finish Grade	3.452	3.383	3.335	3.317	3.278	3.240	3.215	3.190	3.160	3.080	2.990	3.040	3.150	3.133	3.115	3.098	3.088	3.088	3.088	3.015	2.960	2.900	2.850	2.800	2.774	2.774	2.747	2.703	2.703	2.746	2.781	2.889	2.955	3.074	3.180	3.248	3.402	3.532				
	Ground Level	3.457	3.377	3.331	3.311	3.288	3.244	3.217	3.244	3.066	2.933	3.055	3.155	3.144	3.077	3.099	3.088	3.088	3.088	2.977	2.907	2.900	2.900	2.900	2.900	2.772	2.772	2.772	2.772	2.772	2.889	2.955	3.074	3.180	3.255	3.402	3.553						
	Station	-2+600	-2+625	-2+650	-2+675	-2+700	-2+725	-2+750	-2+775	-2+800	-2+825	-2+850	-2+875	-2+900	-2+925	-2+950	-2+975	-2+975	-2+975	-2+975	-2+975	-2+975	-2+975	-2+975	-2+975	-2+975	-2+975	-2+975	-2+975	-2+975	-2+975	-2+975	-2+975	-2+975	-2+975	-2+975	-2+975	-2+975	-2+975				
	Horizontal Alignment																																										
Superelevation																																											



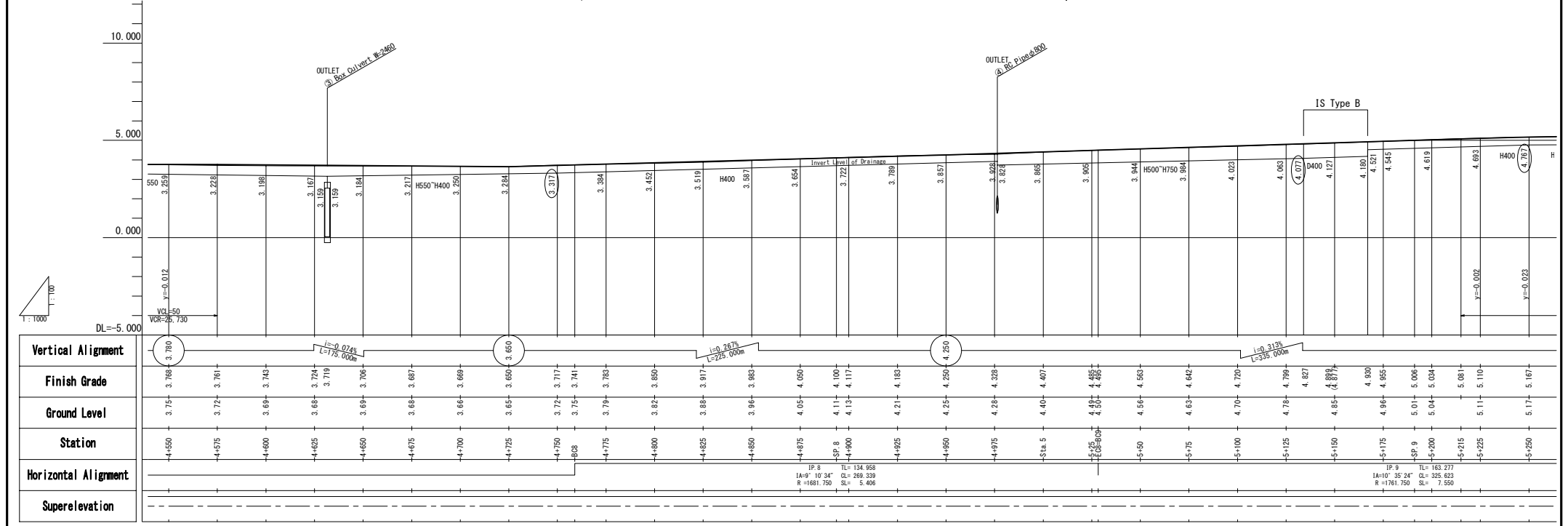
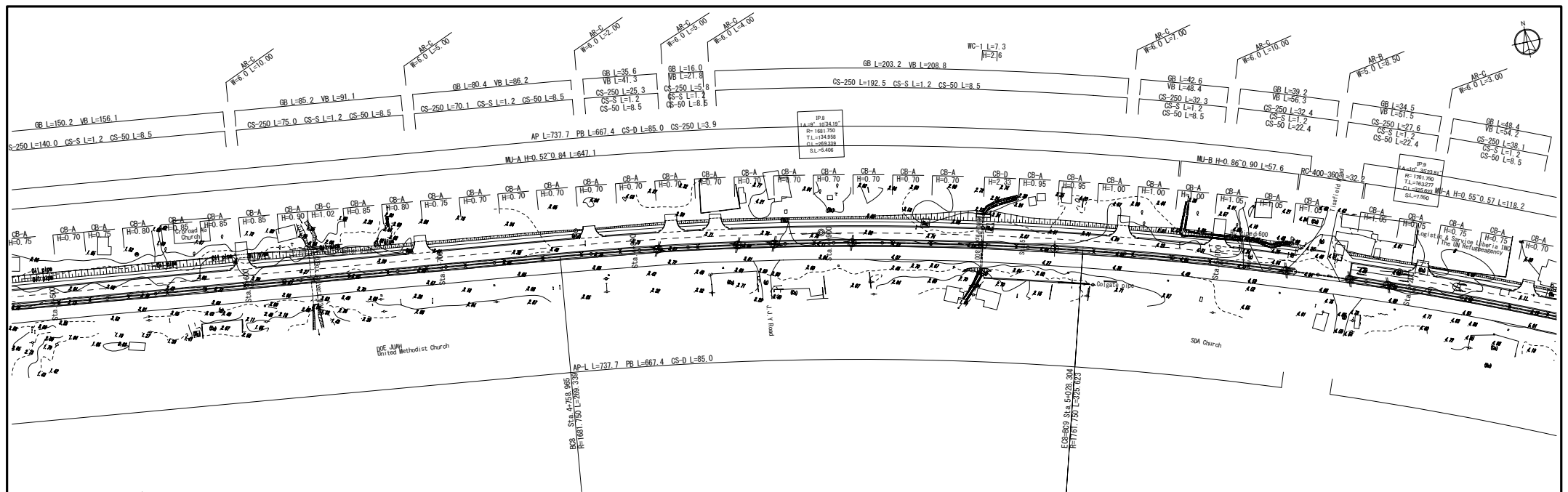
MINISTRY OF PUBLIC WORKS	JAPAN INTERNATIONAL COOPERATION AGENCY KATAHIRA & ENGINEERS INTERNATIONAL YACHIYO ENGINEERING CO.,LTD.	THE PREPARATORY SURVEY ON THE PROJECT FOR RECONSTRUCTION OF SOMALIA DRIVE IN MONROVIA	TITLE : PLAN & PROFILE (Sta.3+250-Sta.3+900)	Drawing No.	PP-6
				SCALE	PLAN S=1/1000 PROFILE V=1/100 H=1/1000
				DATE	SEP. 2012

2-34



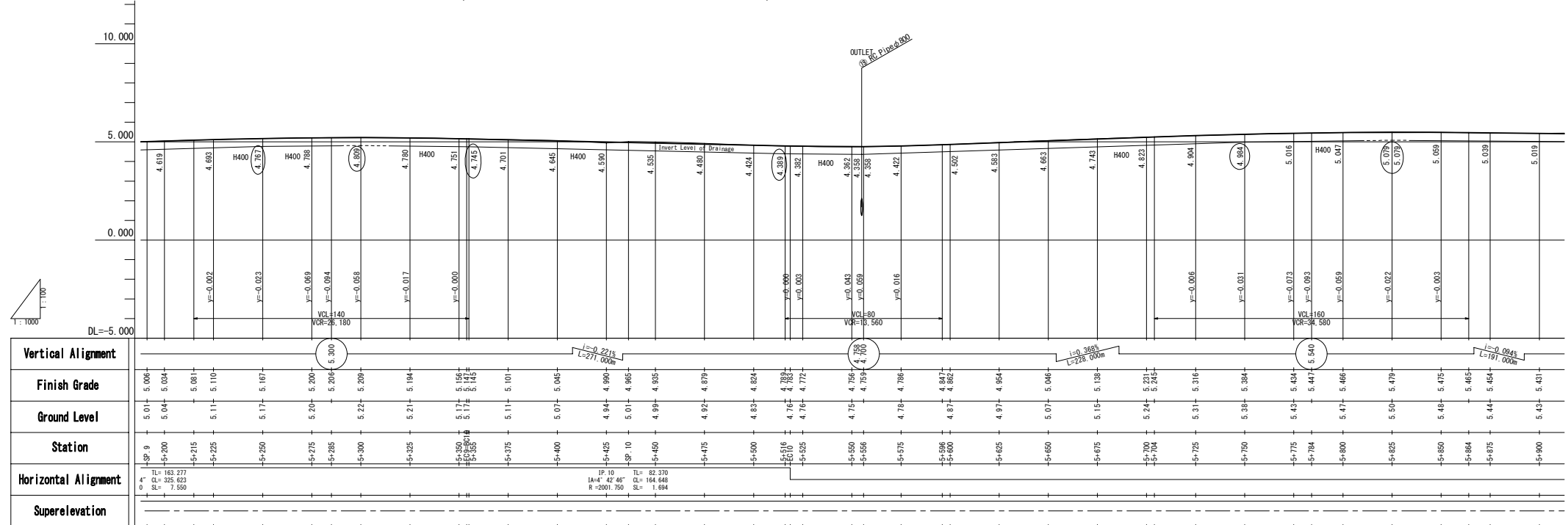
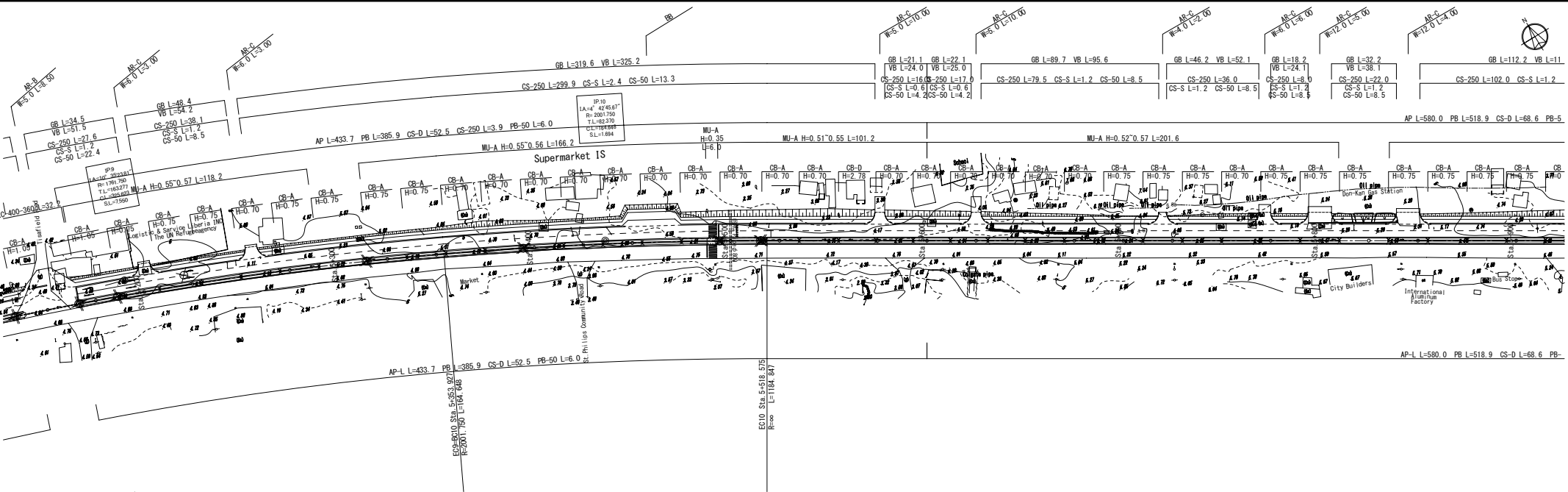
Vertical Alignment	Station	Ground Level	Finish Grade
	3+900	3.44	3.439
	3+907	3.39	3.406
	3+905	3.413	3.413
	3+932	3.46	3.414
	3+950	3.58	3.482
	3+957	3.69	3.480
	3+975	3.74	3.570
	4+000	4.01	4.000
	4+125	4.09	4.007
	4+150	4.18	4.139
	4+175	4.20	4.181
	4+200	4.15	4.157
	4+217	4.20	4.203
	4+225	4.20	4.203
	4+250	4.20	4.207
	4+275	4.15	4.157
	4+300	4.09	4.122
	4+307	4.06	4.066
	4+325	4.03	4.016
	4+350	4.00	3.985
	4+375	3.94	3.936
	4+400	3.79	3.840
	4+425	3.72	3.720
	4+450	3.80	3.750
	4+475	3.75	3.788
	4+500	3.72	3.701
	4+525	3.69	3.743

MINISTRY OF PUBLIC WORKS	JAPAN INTERNATIONAL COOPERATION AGENCY KATAHIRA & ENGINEERS INTERNATIONAL YACHIYO ENGINEERING CO.,LTD.	THE PREPARATORY SURVEY ON THE PROJECT FOR RECONSTRUCTION OF SOMALIA DRIVE IN MONROVIA	TITLE :	PLAN & PROFILE (Sta.3+900-Sta.4+550)
			Drawing No.	PP-7
			SCALE	PLAN S=1/1000 PROFILE V=1/100 H=1/1000
			DATE	SEP. 2012

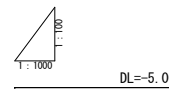


2-35

MINISTRY OF PUBLIC WORKS JAPAN INTERNATIONAL COOPERATION AGENCY KATAHIRA & ENGINEERS INTERNATIONAL YACHIYO ENGINEERING CO., LTD.	THE PREPARATORY SURVEY ON THE PROJECT FOR RECONSTRUCTION OF SOMALIA DRIVE IN MONROVIA	TITLE : PLAN & PROFILE (Sta. 4+550-Sta. 5+200)	Drawing No. PP-8 SCALE PLAN S=1/1000 PROFILE V=1/100 H=1/1000 DATE SEP. 2012

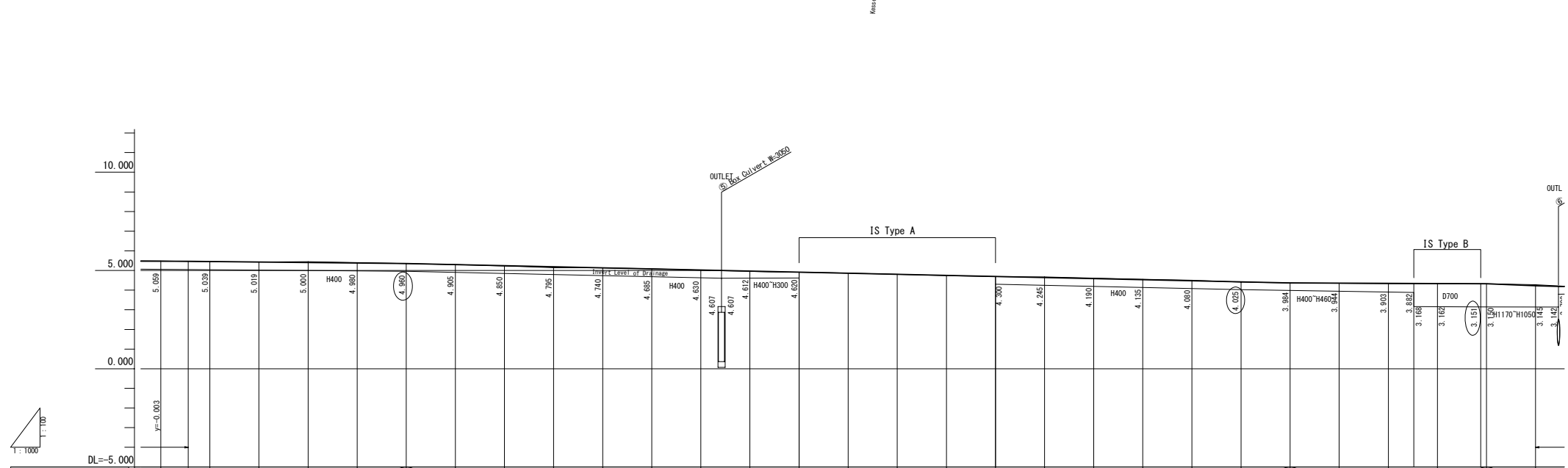
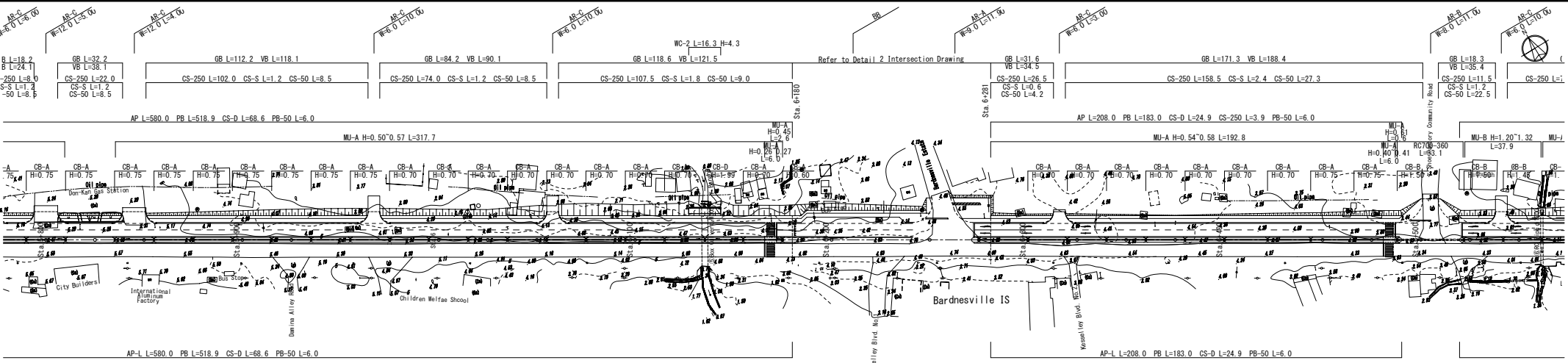


2-36



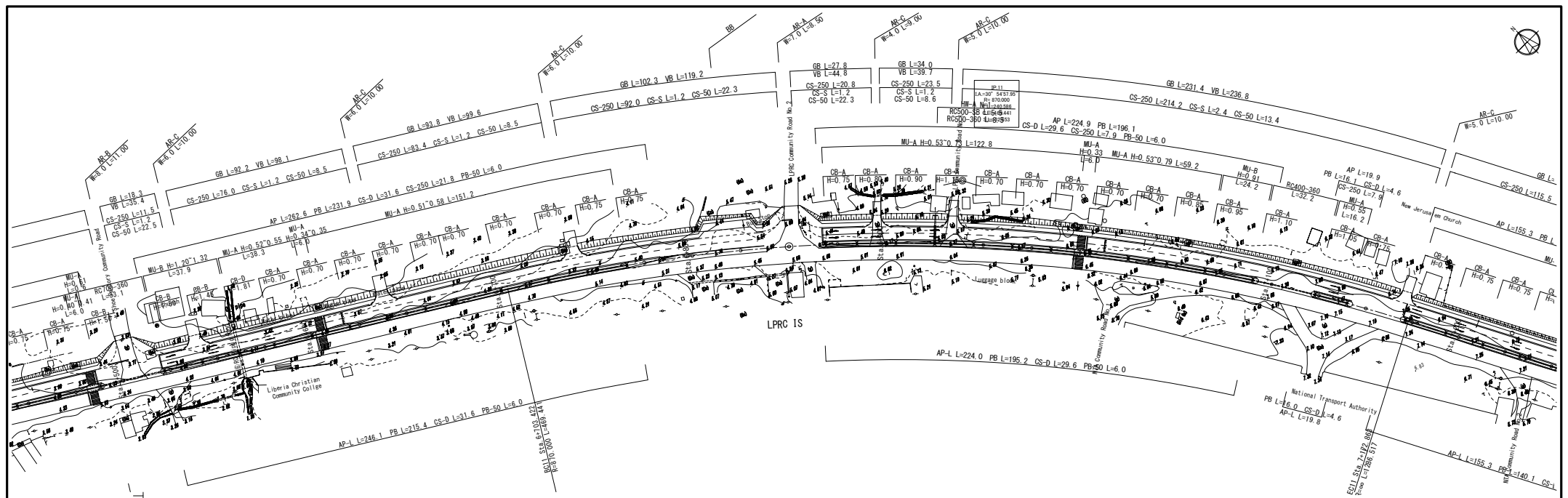
Vertical Alignment	5.006 5.034 5.081 5.110 5.167 5.200 5.206 5.209 5.211 5.194 5.177 5.172 5.172 5.111 5.101 5.077 4.990 4.985 5.011 4.995 4.995 4.921 4.824 4.783 4.772 4.756 4.756 4.784 4.847 4.802 4.977 4.984 5.046 5.138 5.221 5.245 5.316 5.394 5.424 5.424 5.447 5.466 5.479 5.479 5.475 5.485 5.464 5.444 5.443
Finish Grade	5.011 5.044 5.081 5.110 5.167 5.200 5.206 5.209 5.211 5.194 5.177 5.172 5.172 5.111 5.101 5.077 4.990 4.985 5.011 4.995 4.995 4.921 4.824 4.783 4.772 4.756 4.756 4.784 4.847 4.802 4.977 4.984 5.046 5.138 5.221 5.245 5.316 5.394 5.424 5.424 5.447 5.466 5.479 5.479 5.475 5.485 5.464 5.444 5.443
Ground Level	5.011 5.044 5.081 5.110 5.167 5.200 5.206 5.209 5.211 5.194 5.177 5.172 5.172 5.111 5.101 5.077 4.990 4.985 5.011 4.995 4.995 4.921 4.824 4.783 4.772 4.756 4.756 4.784 4.847 4.802 4.977 4.984 5.046 5.138 5.221 5.245 5.316 5.394 5.424 5.424 5.447 5.466 5.479 5.479 5.475 5.485 5.464 5.444 5.443
Station	SP 9 5+200 5+215 5+225 5+250 5+275 5+285 5+300 5+325 5+400 5+425 SP 10 5+450 5+475 5+500 5+516 5+525 5+550 5+556 5+575 5+596 5+600 5+625 5+650 5+675 5+700 5+704 5+725 5+750 5+775 5+784 5+800 5+825 5+850 5+864 5+875 5+900
Horizontal Alignment	TL=163.277 CL=326.623 SL=7.550 PI 10 IA=4° 42' 46" R=2001.750 TL=82.370 CL=164.648 SL=1.694
Superlevation	

2-37

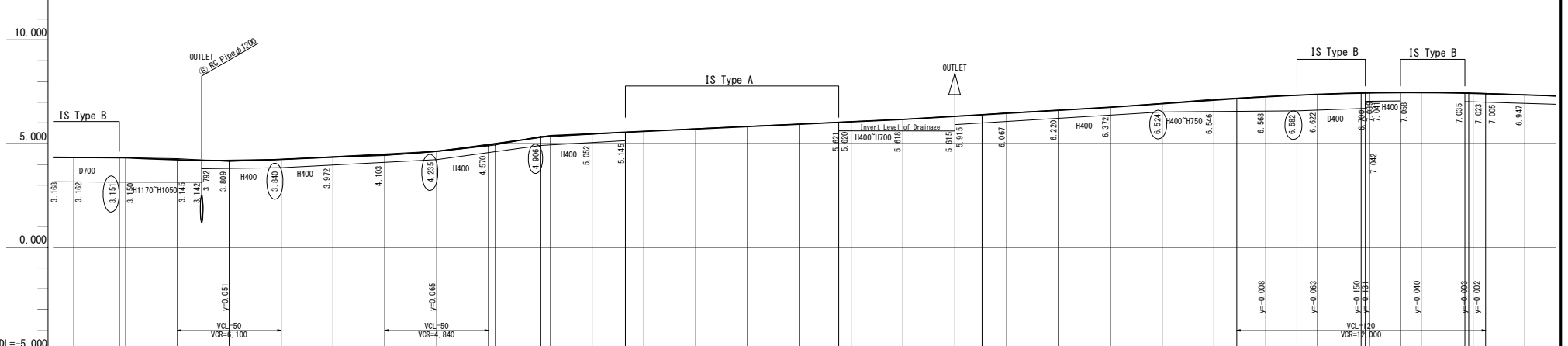


Vertical Alignment	Station	Ground Level	Finish Grade
	5+850	5.48	5.475
	5+864		5.485
	5+875	5.44	5.45
	5+900	5.43	5.431
	5+925	5.45	5.407
	5+950	5.40	5.384
	5+975	5.36	5.366
	Sta. 6	5.30	5.305
	6+25	5.23	5.220
	6+50	5.14	5.185
	6+75	5.14	5.140
	6+100	5.08	5.085
	6+125	5.01	4.630
	6+150	4.96	5.007
	6+175	4.91	4.975
	6+200	4.87	4.612
	6+225	4.81	4.607
	6+250	4.74	4.612
	6+275	4.69	4.620
	6+300	4.67	4.245
	6+325	4.61	4.190
	6+350	4.55	4.125
	6+375	4.50	4.080
	6+400	4.41	4.025
	6+425	4.37	3.964
	6+450	4.35	3.904
	6+475	4.33	3.903
	6+500	4.32	3.882
	6+525	4.32	3.165
	6+550	4.27	3.165

MINISTRY OF PUBLIC WORKS KATAHIRA & ENGINEERS INTERNATIONAL YACHIYO ENGINEERING CO.,LTD.	JAPAN INTERNATIONAL COOPERATION AGENCY THE PREPARATORY SURVEY ON THE PROJECT FOR RECONSTRUCTION OF SOMALIA DRIVE IN MONROVIA	TITLE : PLAN & PROFILE (Sta.5+850-Sta.6+500)	Drawing No.	PP-10
			SCALE	PLAN S=1/1000 PROFILE V=1/100 H=1/1000
			DATE	SEP. 2012



2-38



Vertical Alignment	6+500	6+525	6+550	6+575	6+600	6+625	6+650	6+675	6+700	6+725	6+750	6+775	6+800	6+825	6+850	6+875	6+900	6+925	Sta. 7	7+25	7+50	7+61	7+75	7+100	7+125	7+150	7+181	7+200			
Finish Grade	4.339	4.322	4.322	4.225	4.192	4.181	4.130	4.625	4.881	5.305	5.473	5.547	5.782	5.889	5.983	6.026	6.054	6.315	6.391	6.400	6.605	6.700	6.924	7.097	7.173	7.282	7.340	7.371	7.443	7.462	7.488
Ground Level	4.321	4.321	4.271	4.145	4.114	4.244	4.400	4.622	4.881	5.351	5.473	5.588	5.711	5.841	5.944	6.006	6.054	6.317	6.400	6.480	6.611	6.751	6.924	7.114	7.173	7.271	7.340	7.371	7.443	7.462	7.488
Station	6+500	6+525	6+550	6+575	6+600	6+625	6+650	6+675	6+700	6+725	6+750	6+775	6+800	6+825	6+850	6+875	6+900	6+925	Sta. 7	7+25	7+50	7+61	7+75	7+100	7+125	7+150	7+181	7+200			
Horizontal Alignment	IP 11 1A=30° 54' 58" R=870.000		TL=240.586 CL=469.441 SL=32.653																												
Superelevation																															

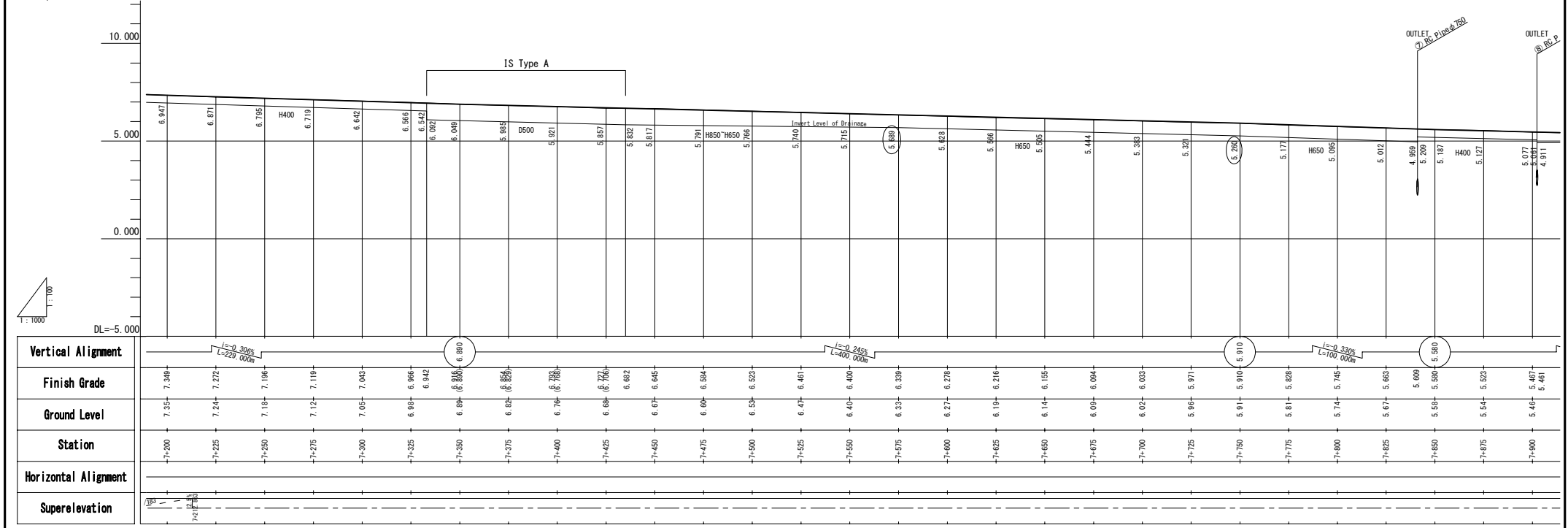
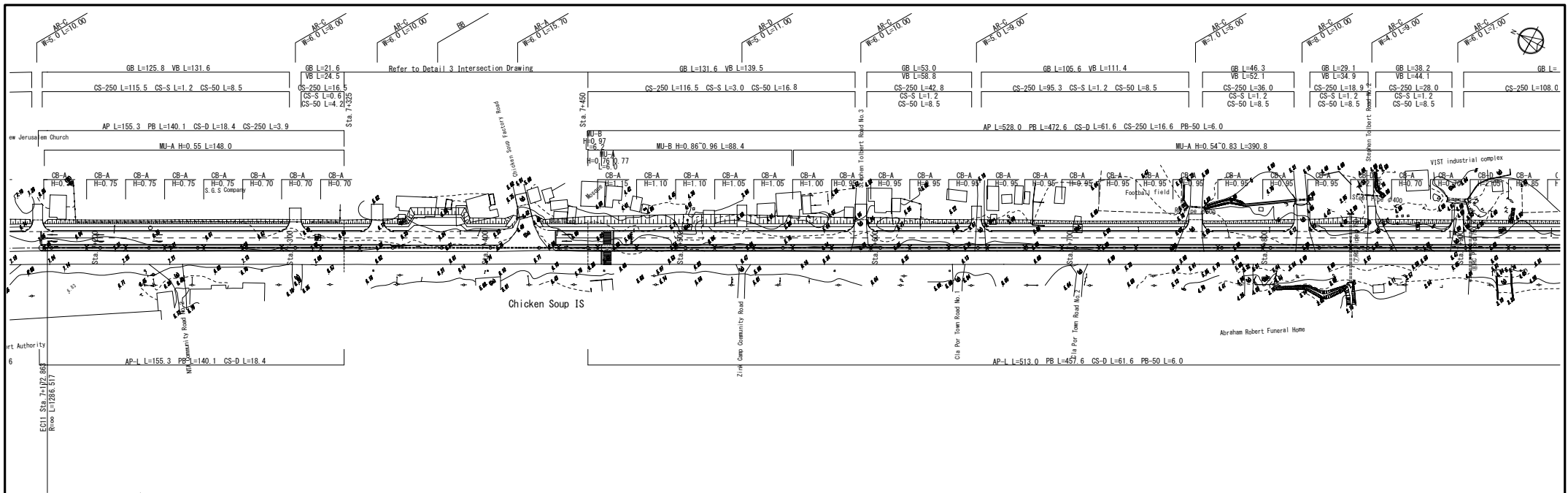
MINISTRY OF PUBLIC WORKS

JAPAN INTERNATIONAL
COOPERATION AGENCY
KATAHIRA & ENGINEERS INTERNATIONAL
YACHIYO ENGINEERING CO.,LTD.

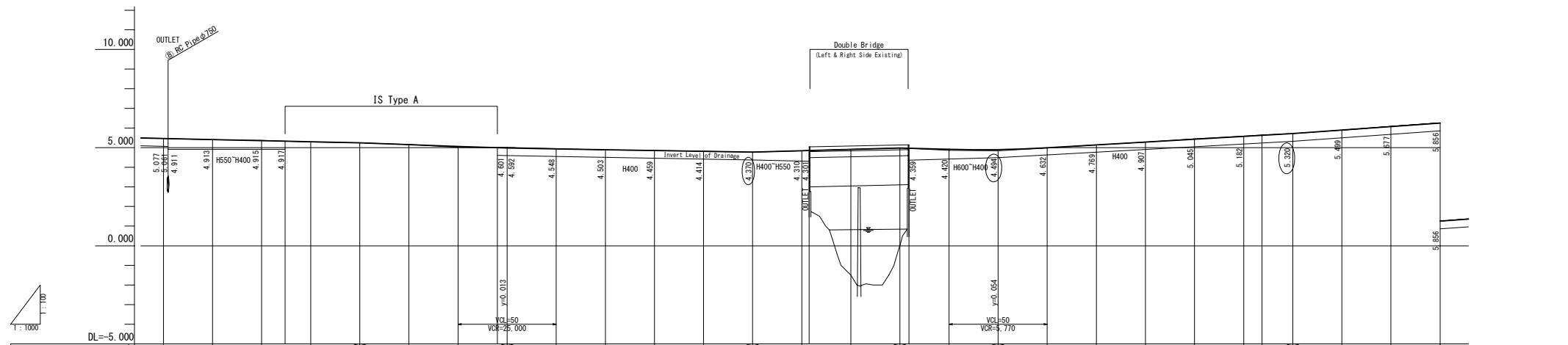
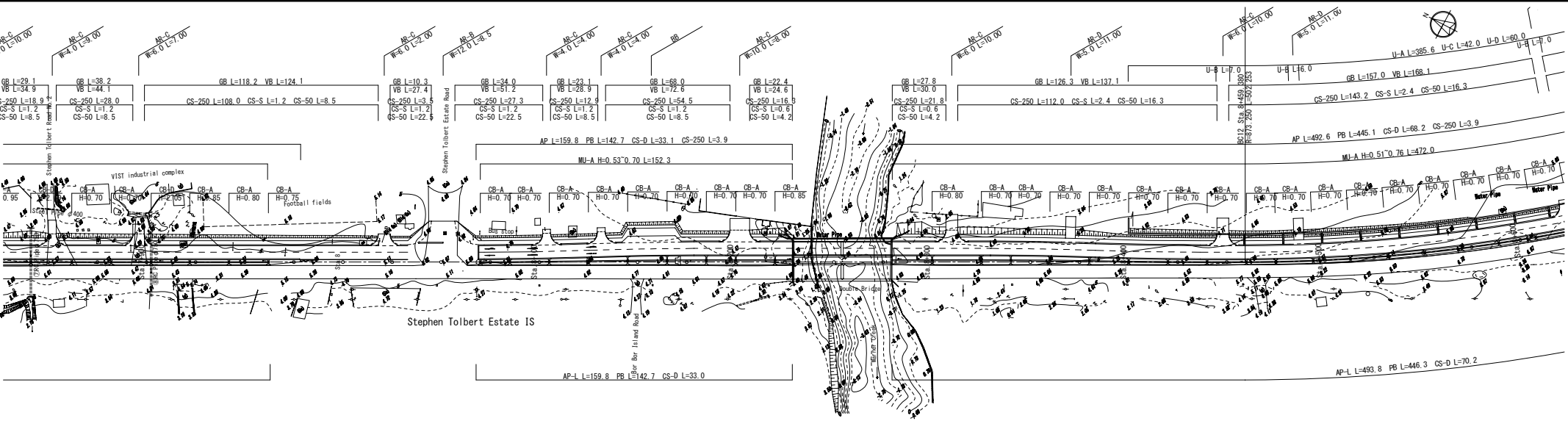
THE PREPARATORY SURVEY ON
THE PROJECT FOR
RECONSTRUCTION OF
SOMALIA DRIVE IN MONROVIA

TITLE :
PLAN & PROFILE
(Sta.6+500-Sta.7+200)

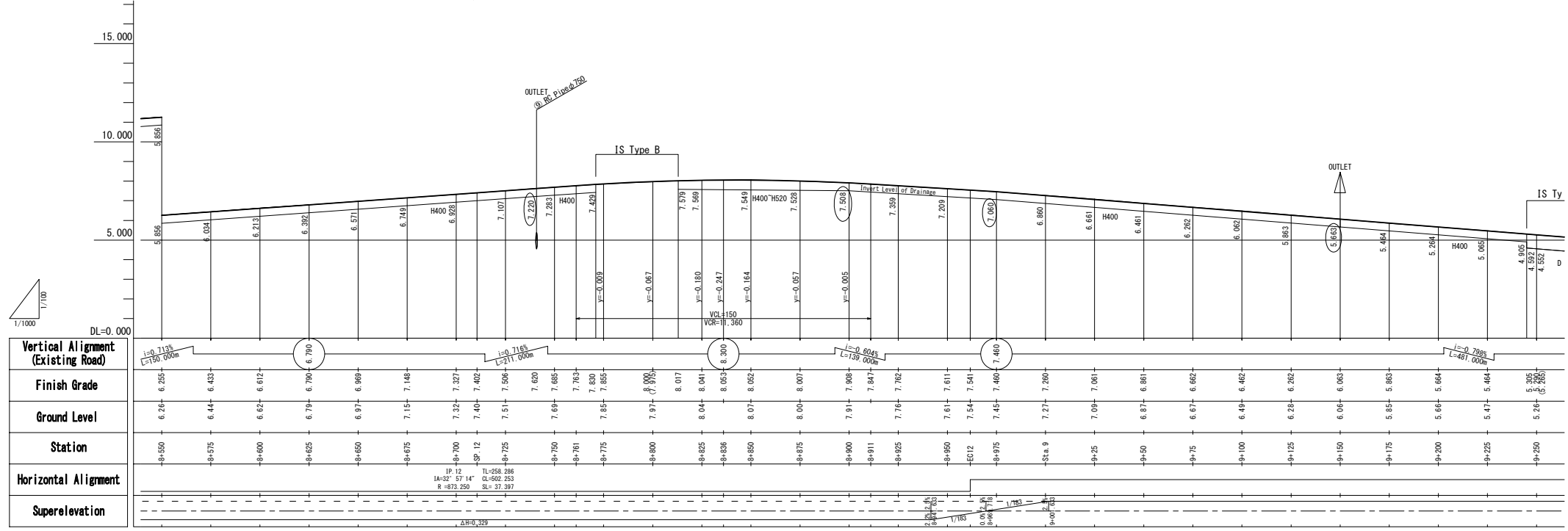
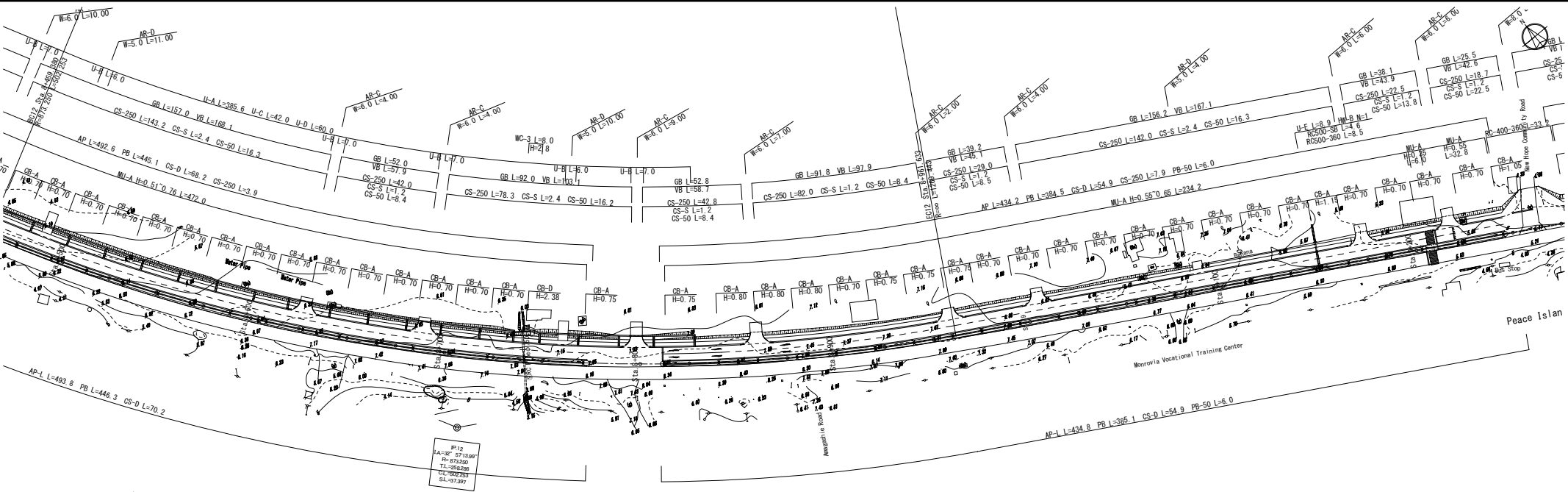
Drawing No.	PP-11
SCALE	PLAN S=1/1000 PROFILE V=1/100 H=1/1000
DATE	SEP. 2012

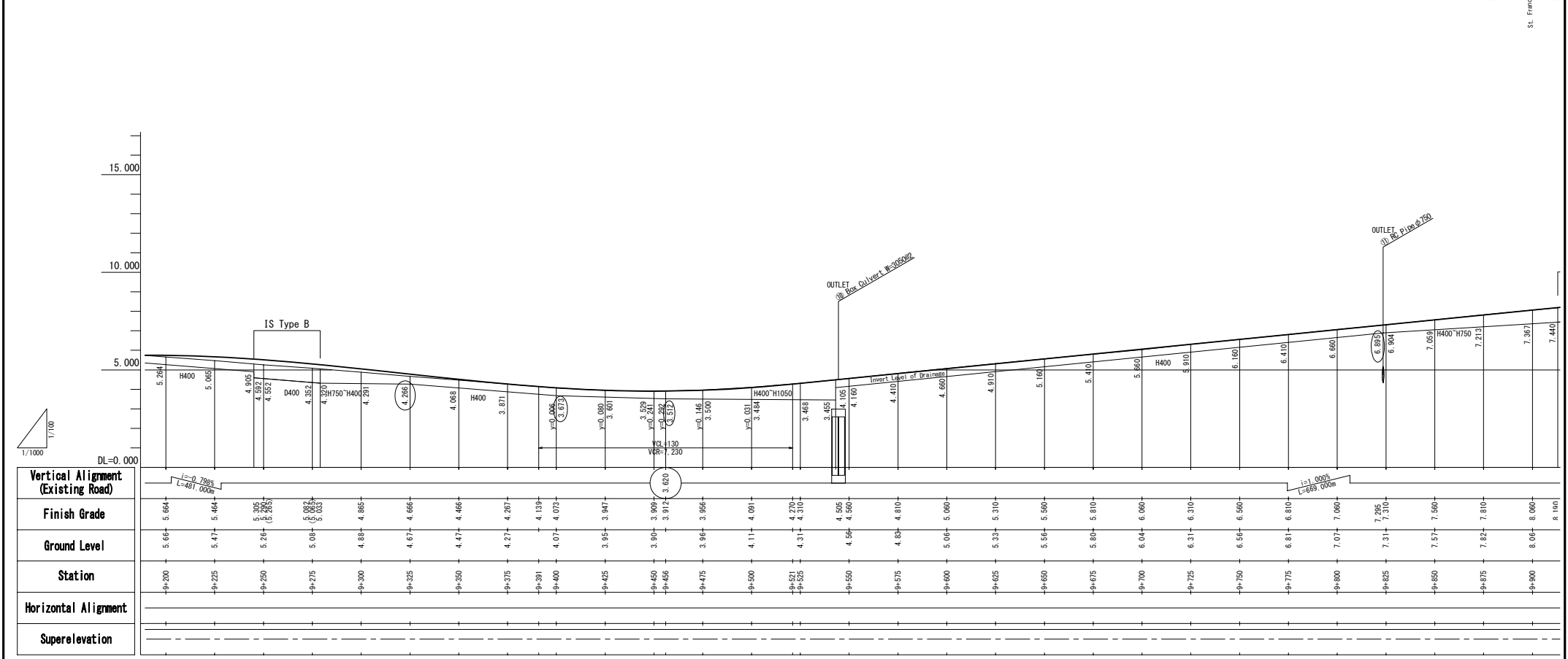
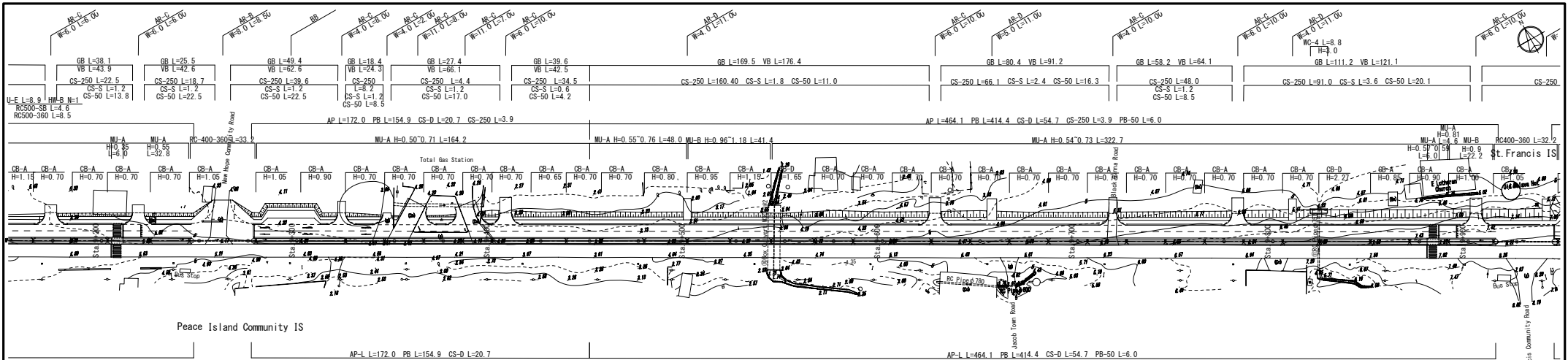


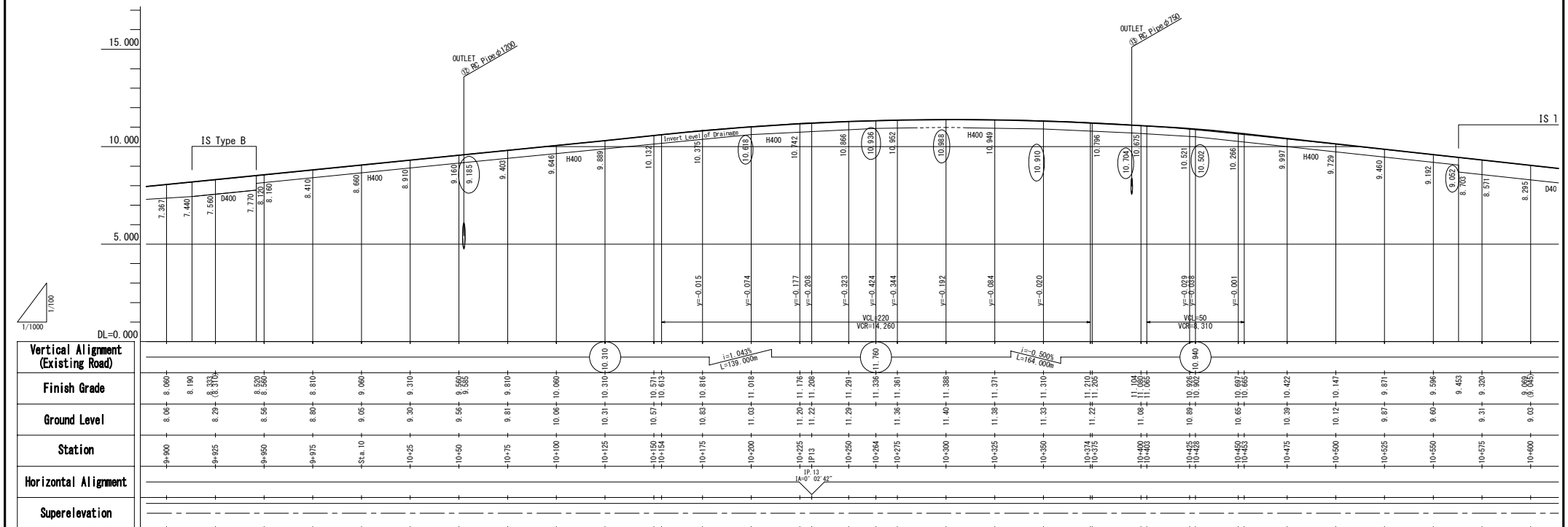
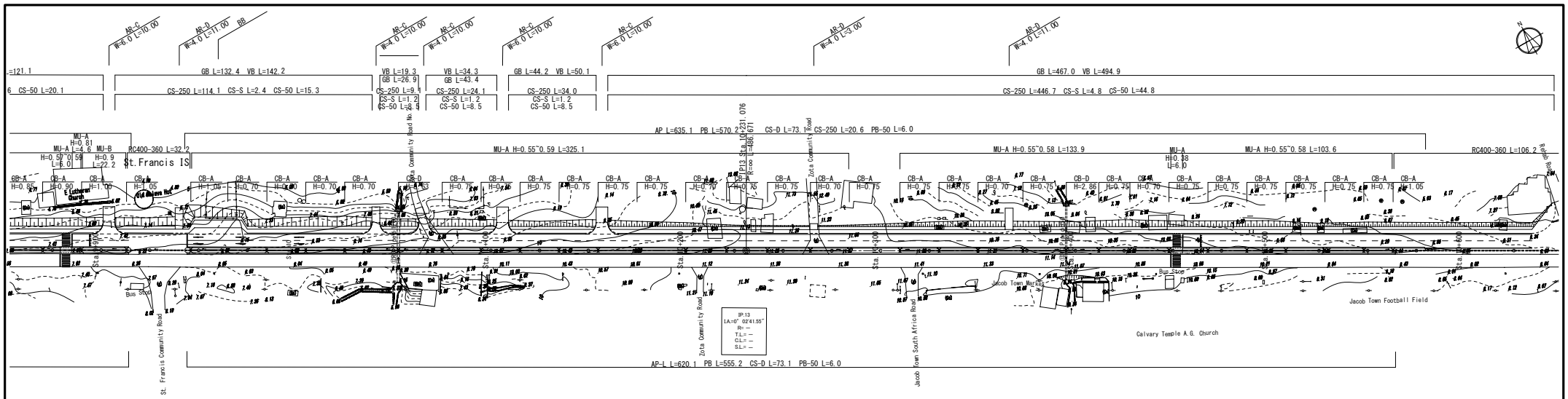
MINISTRY OF PUBLIC WORKS JAPAN INTERNATIONAL COOPERATION AGENCY KATAHIRA & ENGINEERS INTERNATIONAL YACHIYO ENGINEERING CO., LTD.	THE PREPARATORY SURVEY ON THE PROJECT FOR RECONSTRUCTION OF SOMALIA DRIVE IN MONROVIA	TITLE : PLAN & PROFILE (Sta. 7+200-Sta. 7+900)	Drawing No.	PP-12
			SCALE	PLAN S=1/1000 PROFILE V=1/100 H=1/1000
			DATE	SEP. 2012



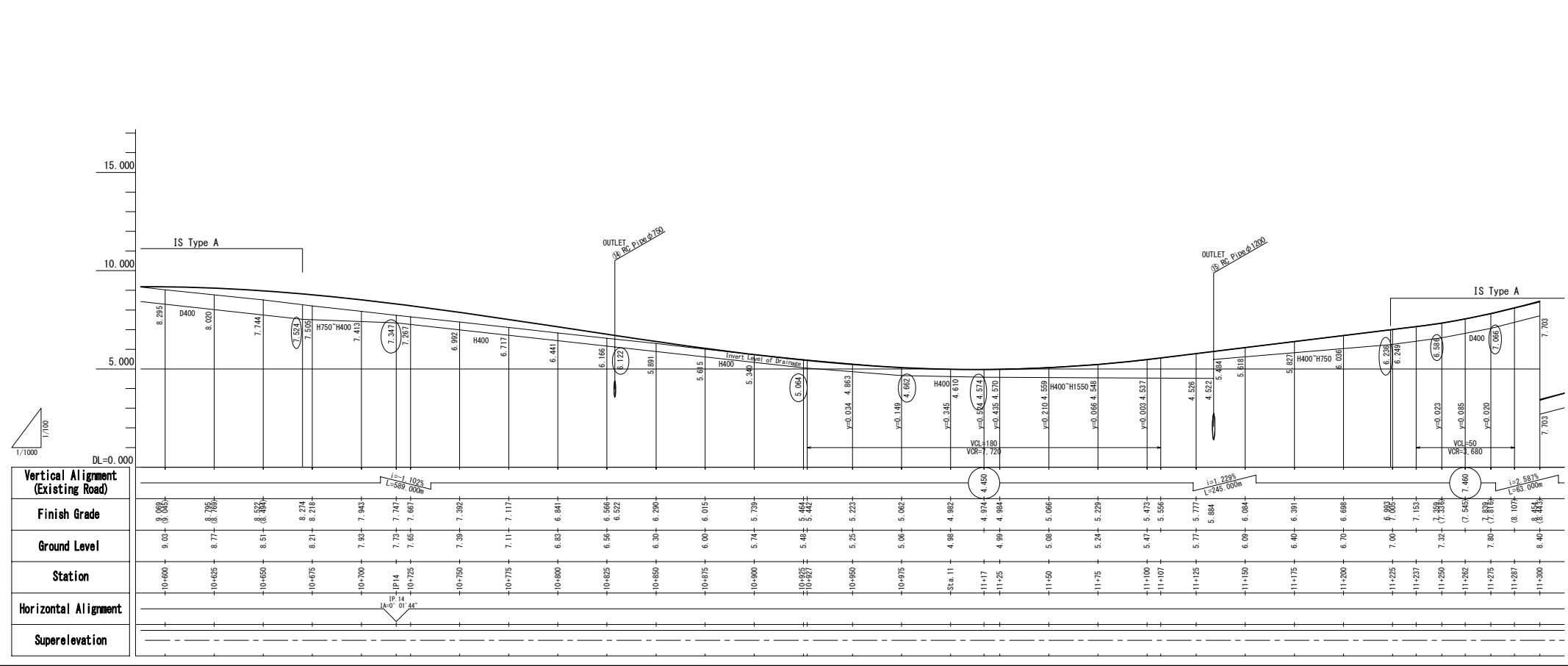
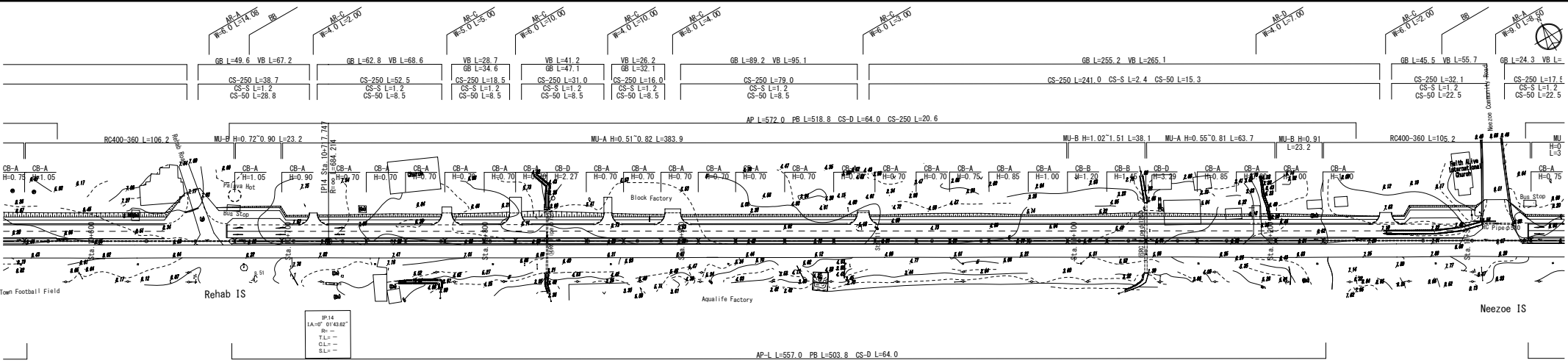
Vertical Alignment	Finish Grade	Ground Level	Station	Horizontal Alignment	Superelevation
$i=0.227\%$ $L=150.000m$	5.467 5.461 5.410 5.353 5.326 5.297 5.240 5.240 5.116 5.082	5.46 5.40 5.37 5.29 5.24 5.16 5.01	7+900 7+925 7+950 7+975 8+000 8+025 8+050	7+900 7+925 7+950 7+975 8+000 8+025 8+050	
$i=0.360\%$ $L=75.000m$	4.996 4.983 4.970 4.952 4.948 4.930 4.900 4.880 4.850 4.810 4.770 4.840 4.951 4.910 4.980 4.958 4.910 4.880 4.840 4.800 5.045 5.182 5.64 5.720 5.688 5.677 6.255	4.99 4.98 4.97 4.95 4.94 4.92 4.89 4.87 4.84 4.81 4.77 4.84 4.95 4.91 4.98 4.95 4.91 4.88 4.84 4.80 5.04 5.18 5.64 5.72 5.69 6.08 6.26	8+075 8+100 8+125 8+150 8+175 8+200 8+225 8+250 8+275 8+300 8+325 8+350 8+375 8+400 8+425 8+450 8+475 8+500 8+525 8+550	8+075 8+100 8+125 8+150 8+175 8+200 8+225 8+250 8+275 8+300 8+325 8+350 8+375 8+400 8+425 8+450 8+475 8+500 8+525 8+550	
$i=0.160\%$ $L=75.000m$					
$i=0.280\%$ $L=75.000m$					
$i=0.280\%$ $L=50.000m$					
$i=0.58\%$ $L=150.000m$					
$i=0.713\%$ $L=150.000m$					



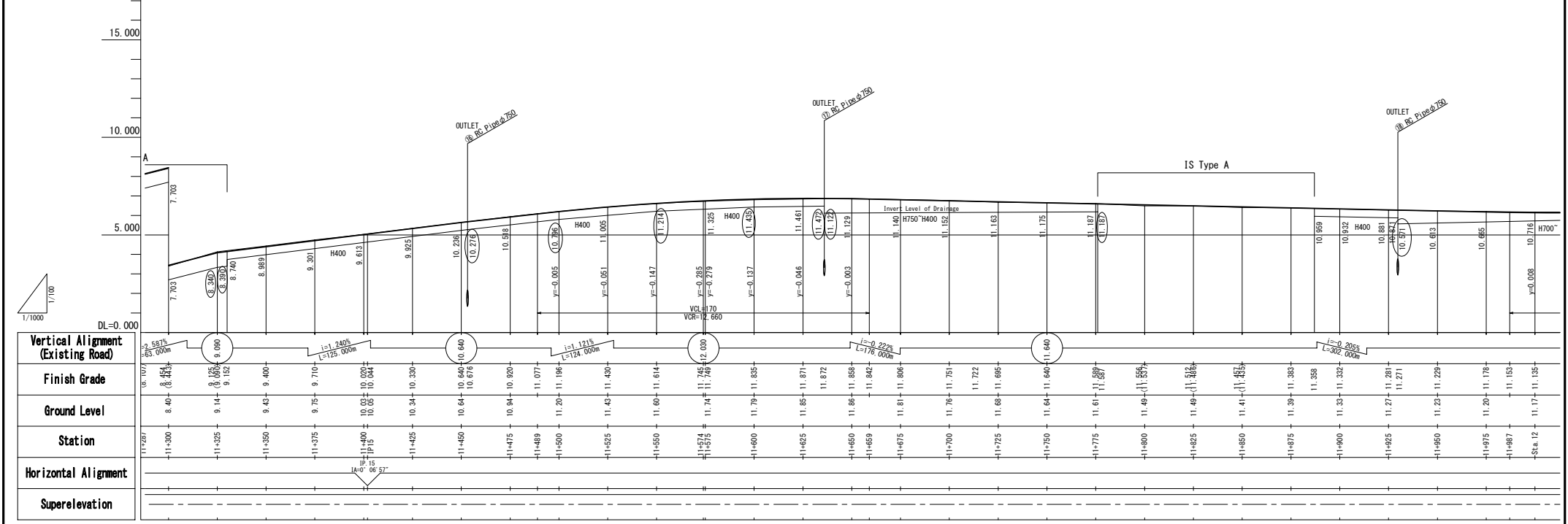
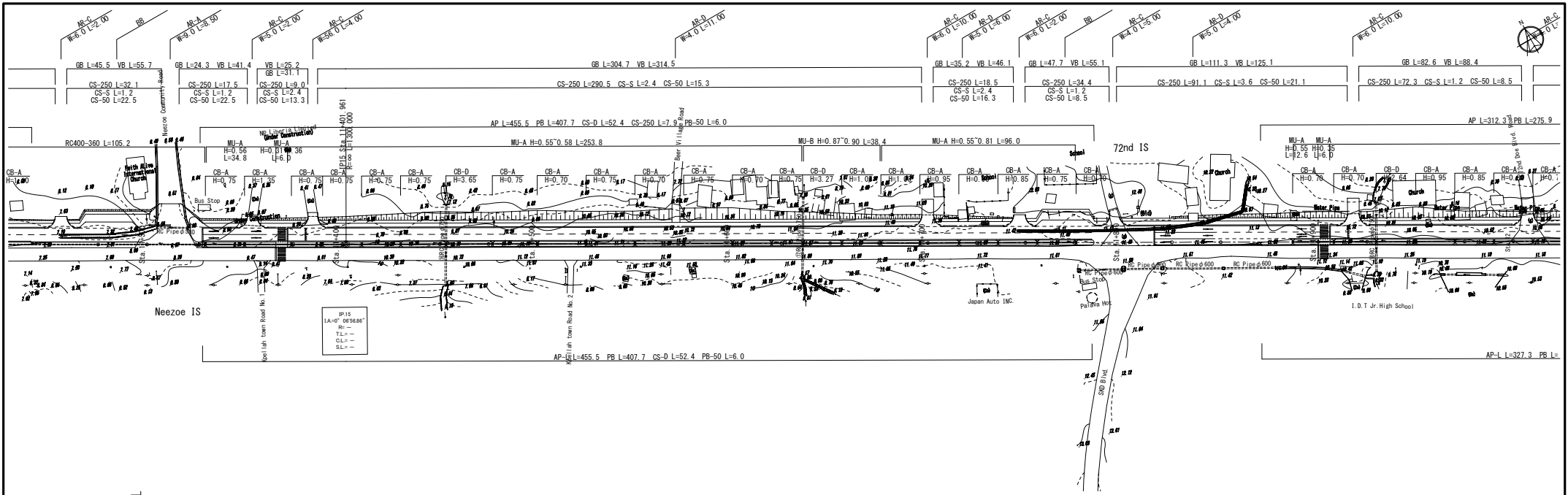




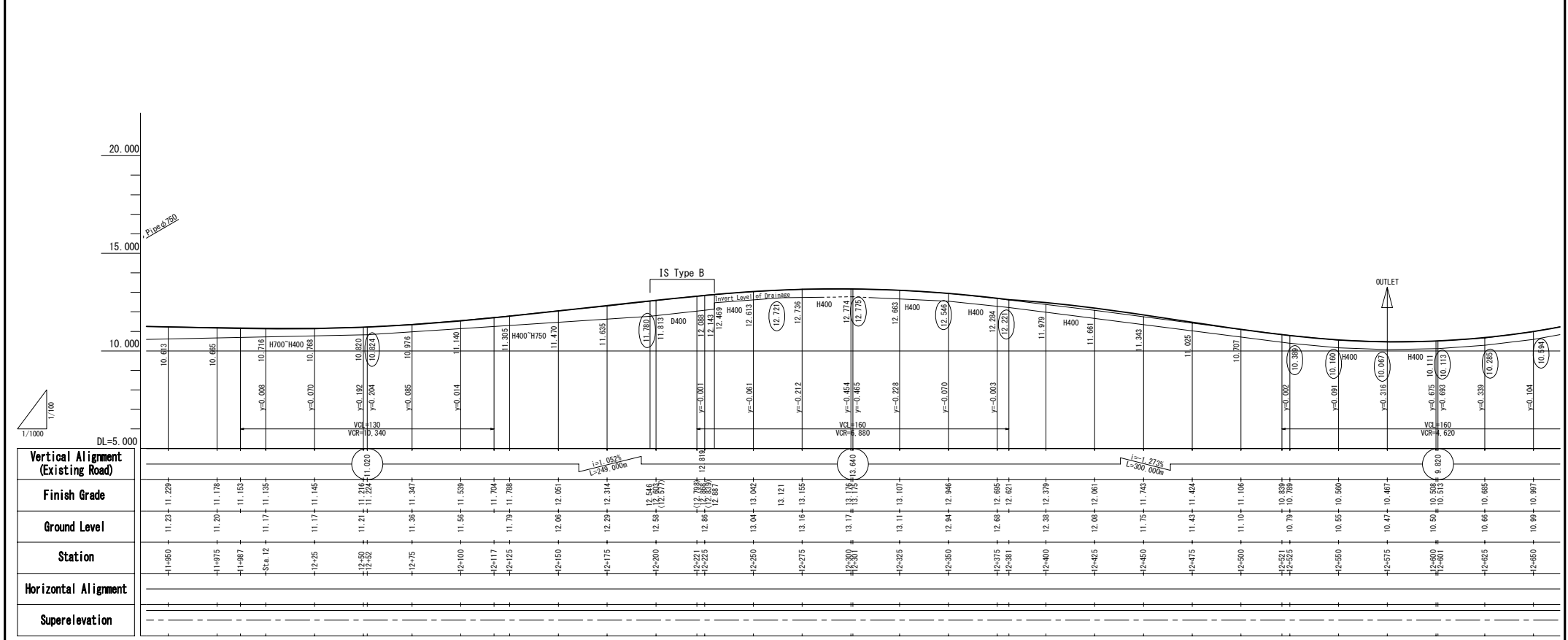
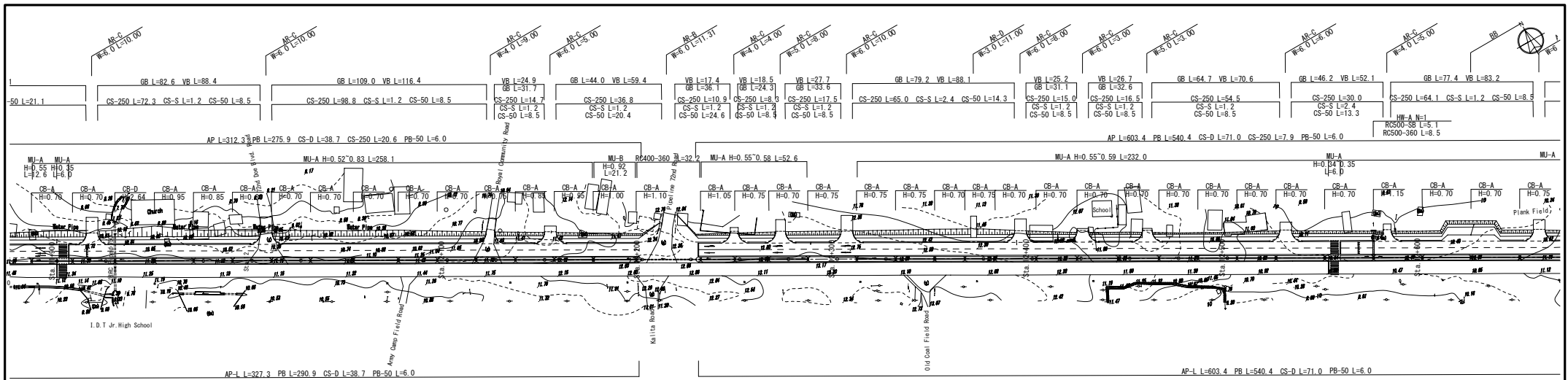
Vertical Alignment	Finish Grade	Ground Level	Station	Horizontal Alignment	Superelevation
IS Type B	8.080	8.06	9+900		
	8.190	8.19	9+925		
	8.330	8.29	9+950		
	8.520	8.56	9+975		
	8.660	8.80	10+000		
	8.810	8.81	10+025		
	8.910	8.91	10+050		
	9.040	9.05	10+075		
	9.210	9.20	10+100		
	9.310	9.31	10+125		
	9.560	9.56	10+150		
	9.810	9.81	10+175		
	10.060	10.06	10+200		
	10.310	10.31	10+225		
	10.570	10.57	10+250		
	10.613	10.61	10+275		
	10.816	10.83	10+300		
	11.018	11.03	10+325		
	11.176	11.20	10+350		
	11.208	11.22	10+375		
	11.281	11.29	10+400		
	11.336	11.33	10+425		
	11.361	11.36	10+450		
	11.388	11.40	10+475		
	11.371	11.38	10+500		
	11.310	11.33	10+525		
	11.210	11.22	10+550		
	11.205	11.21	10+575		
	11.060	11.08	10+600		
	10.925	10.89			
	10.902	10.65			
	10.697	10.65			
	10.685	10.39			
	10.422	10.39			
	10.147	10.12			
	9.871	9.87			
	9.596	9.60			
	9.453	9.45			
	9.320	9.31			
	9.038	9.03			



MINISTRY OF PUBLIC WORKS	JAPAN INTERNATIONAL COOPERATION AGENCY KATAHIRA & ENGINEERS INTERNATIONAL YACHIYO ENGINEERING CO.,LTD.	THE PREPARATORY SURVEY ON THE PROJECT FOR RECONSTRUCTION OF SOMALIA DRIVE IN MONROVIA	TITLE : PLAN & PROFILE (Sta.10+600-Sta.11+300)	Drawing No.	PP-17
				SCALE	PLAN S=1/1000 PROFILE V=1/100 H=1/1000
				DATE	SEP. 2012

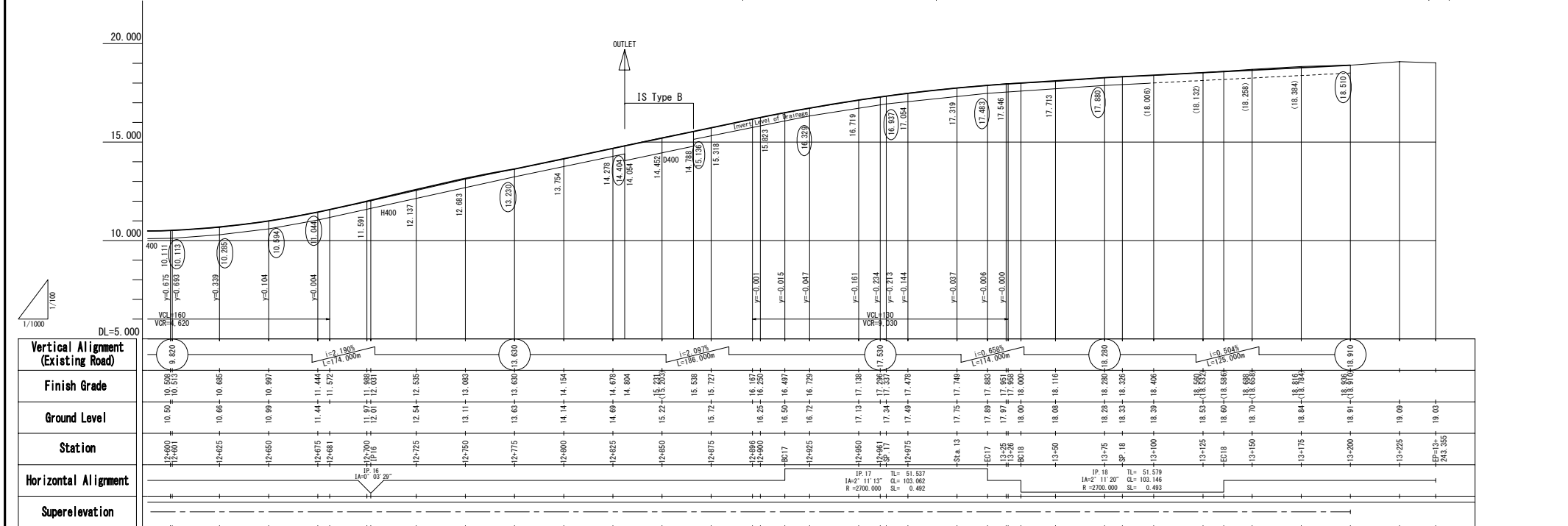
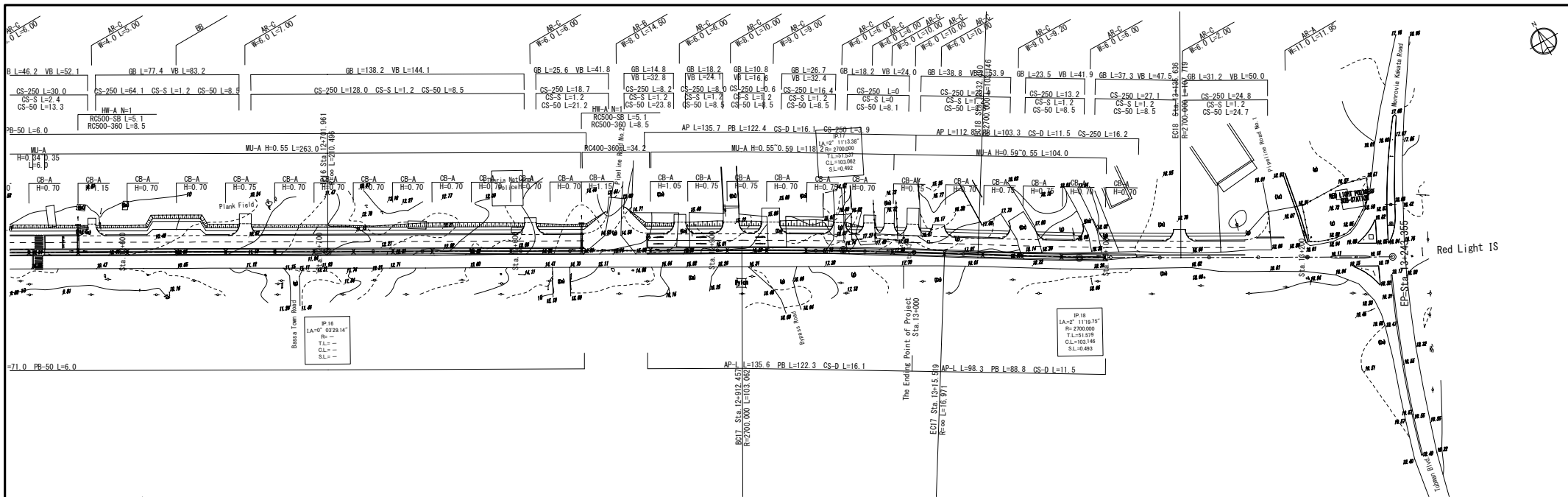


MINISTRY OF PUBLIC WORKS JAPAN INTERNATIONAL COOPERATION AGENCY KATAHIRA & ENGINEERS INTERNATIONAL YACHIYO ENGINEERING CO.,LTD.	THE PREPARATORY SURVEY ON THE PROJECT FOR RECONSTRUCTION OF SOMALIA DRIVE IN MONROVIA	TITLE : PLAN & PROFILE (Sta.11+300-Sta.11+950)	Drawing No.	PP-18
			SCALE	PLAN S=1/1000 PROFILE V=1/1000 H=1/1000
			DATE	SEP. 2012

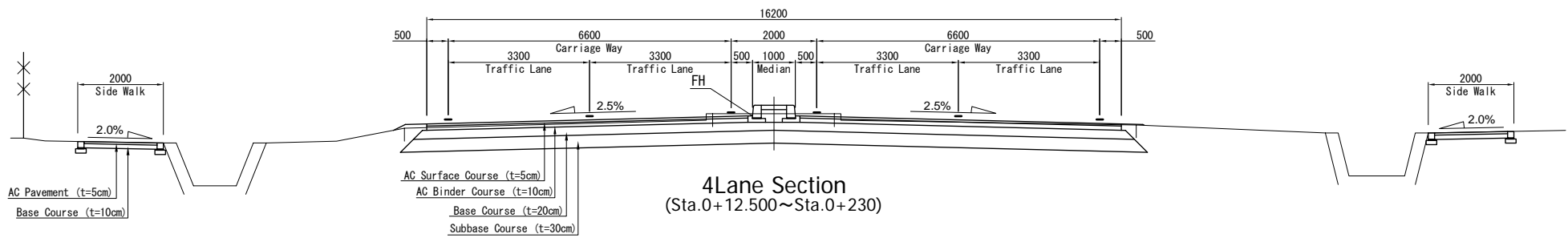
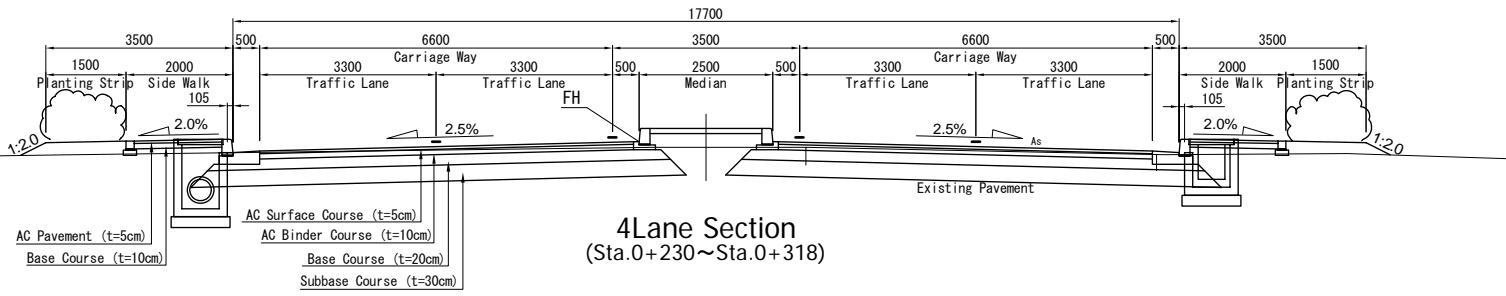
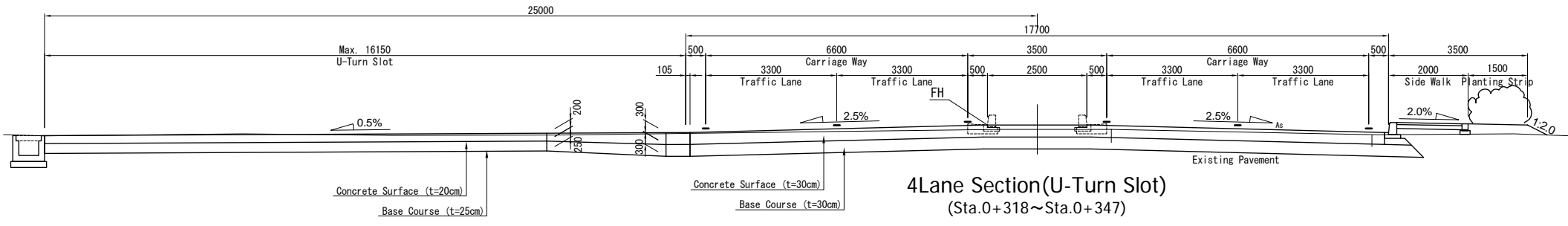
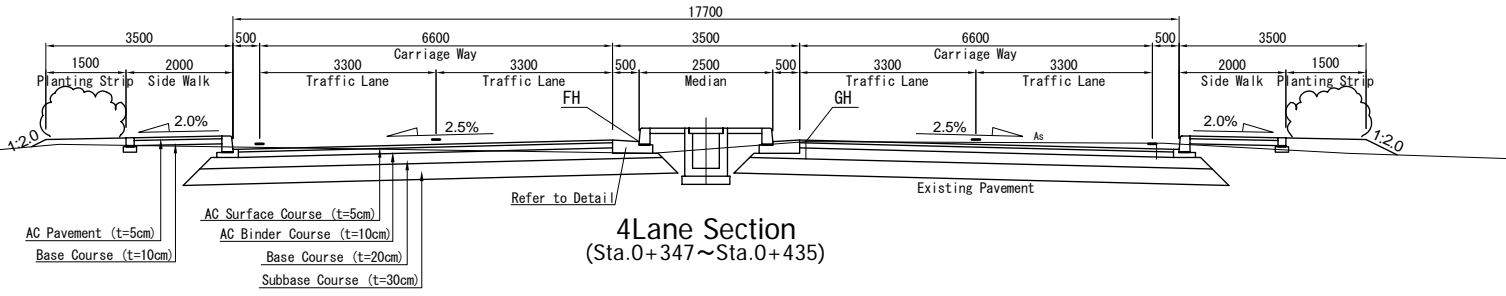


MINISTRY OF PUBLIC WORKS	JAPAN INTERNATIONAL COOPERATION AGENCY KATAHIRA & ENGINEERS INTERNATIONAL YACHIYO ENGINEERING CO.,LTD.	THE PREPARATORY SURVEY ON THE PROJECT FOR RECONSTRUCTION OF SOMALIA DRIVE IN MONROVIA	TITLE : PLAN & PROFILE (Sta.11+950-Sta.12+600)	Drawing No.	PP-19
				SCALE	PLAN S=1/1000 PROFILE V=1/100 H=1/1000
				DATE	SEP. 2012

2-46



2-47



MINISTRY OF PUBLIC WORKS

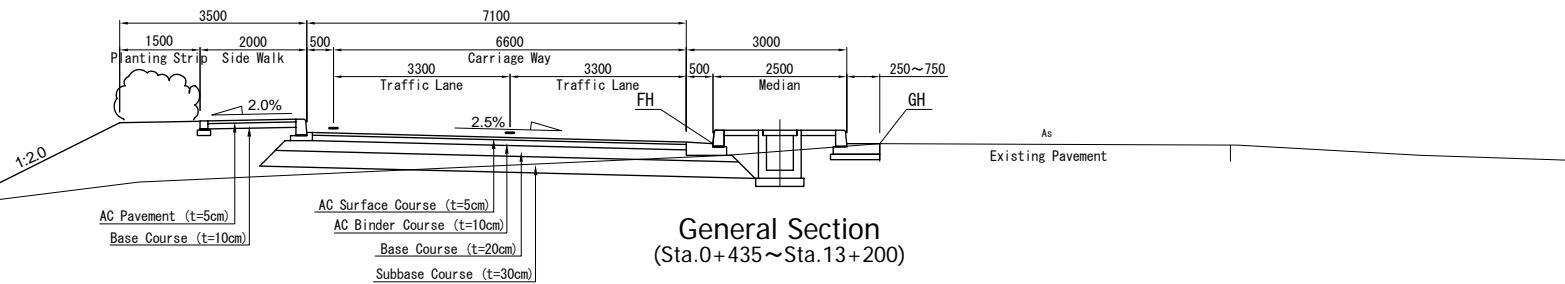
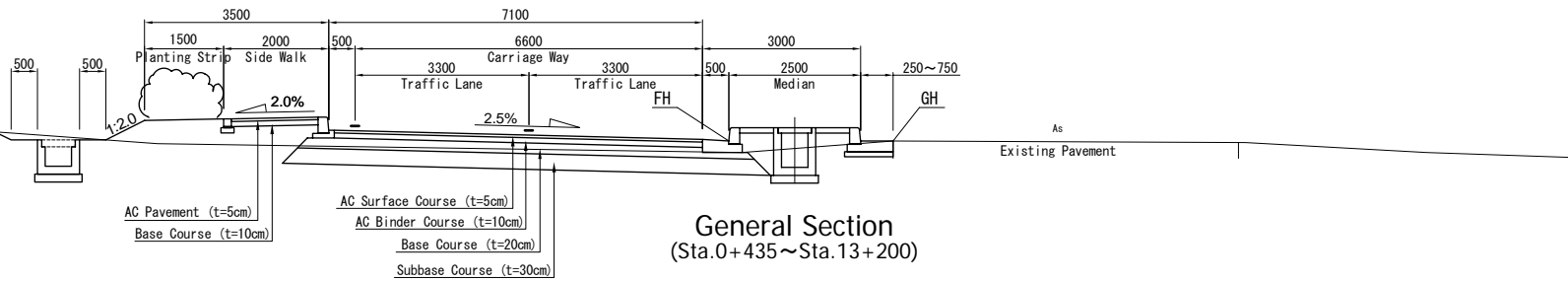
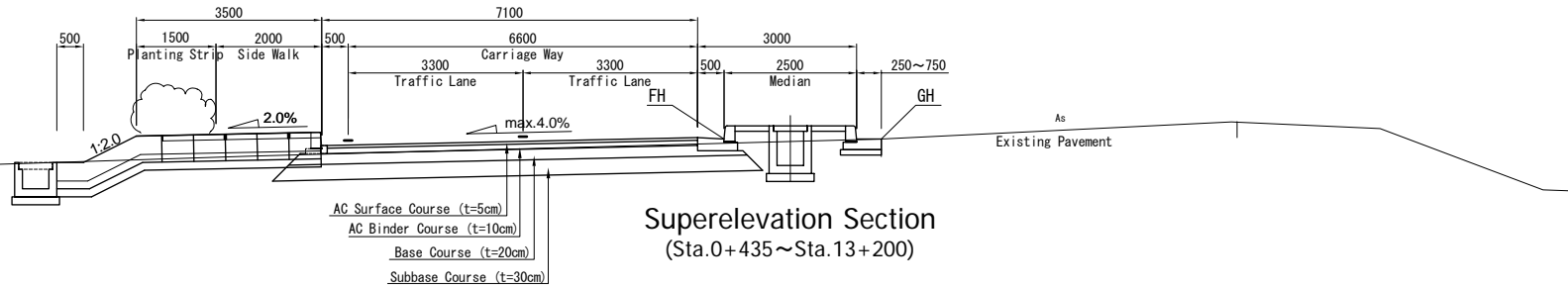
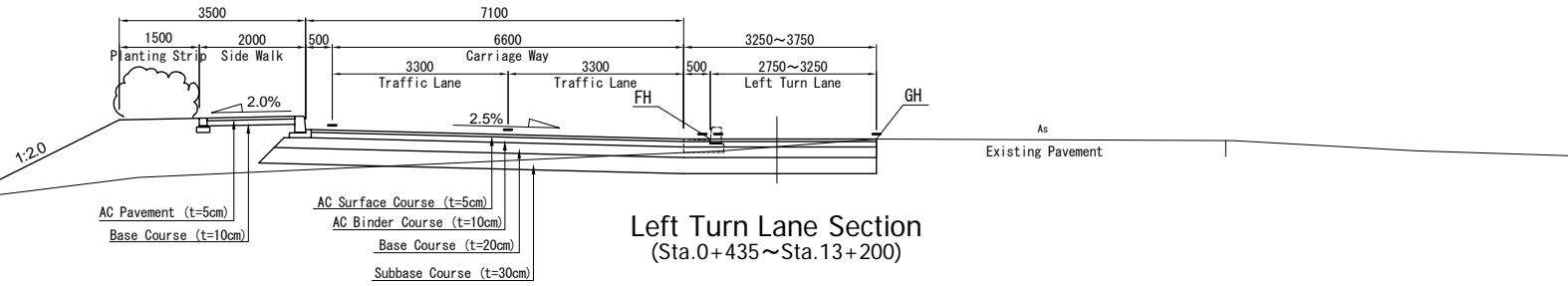
JAPAN INTERNATIONAL
COOPERATION AGENCY
KATAHIRA & ENGINEERS INTERNATIONAL
YACHIYO ENGINEERING CO.,LTD.

THE PREPARATORY SURVEY ON
THE PROJECT FOR
RECONSTRUCTION OF
SOMALIA DRIVE IN MONROVIA

TITLE :
TYPICAL CROSS SECTION (1)
(Sta.0+12.500~Sta.0+400)

Drawing No.	TC-1
SCALE	A1:1/ 50 A3:1/100
DATE	SEP. 2012

2-48



MINISTRY OF PUBLIC WORKS

JAPAN INTERNATIONAL
COOPERATION AGENCY
KATAHIRA & ENGINEERS INTERNATIONAL
YACHIYO ENGINEERING CO.,LTD.

THE PREPARATORY SURVEY ON
THE PROJECT FOR
RECONSTRUCTION OF
SOMALIA DRIVE IN MONROVIA

TITLE :
TYPICAL CROSS SECTION (2)
(2LANE:Sta.0+400~Sta.13+200)

Drawing No.	TC-2
SCALE	A1:1/ 50 A3:1/100
DATE	SEP. 2012