

### **3.4 Recommendation for Salt Townscape Formation**

Finally, we completed our survey on 990 sites without lost SPFA buildings. We have three options to form the Salt Townscape.

#### **Option 1. "Feature the value of survived property"**

Only Yellow Limestone from Salt's Yellow Limestone will be used. Other materials such as White Stone will be used for the repair and new construction.

#### **Option 2. "Restoration of the Historical Townscape"**

The reconstruction with Yellow Limestone will be preceded and followed by architectural study (Evidences of original use).

#### **Option 3. "Turn Whole Salt Townscape into Yellow"**

Characterize Salt as Yellow Stone Town.

## 4. Basic Survey on the Structures and the Environmental Elements in Salt

Our purpose of collecting the basic data is not only for the conservation of the Salt townscape but also Community Development, which is based on the concept, Salt Ecomuseum. The survey of the structures and the environmental elements is also part of Townscape Management. It is necessary for it to collect the further data of the structures and the environmental elements.

We could not survey all the structures and the environmental elements because our mission is mainly for the buildings. Yet we could demonstrate the possibility of the survey on it by recording the stories and summarized them as below. For the next stage, this Chapter will help the further survey of the structures and the environmental elements.

### 4.1 The structures

#### 4.1.1 Stairs

We surveyed "Implementation Area"\* and "Khader Area".

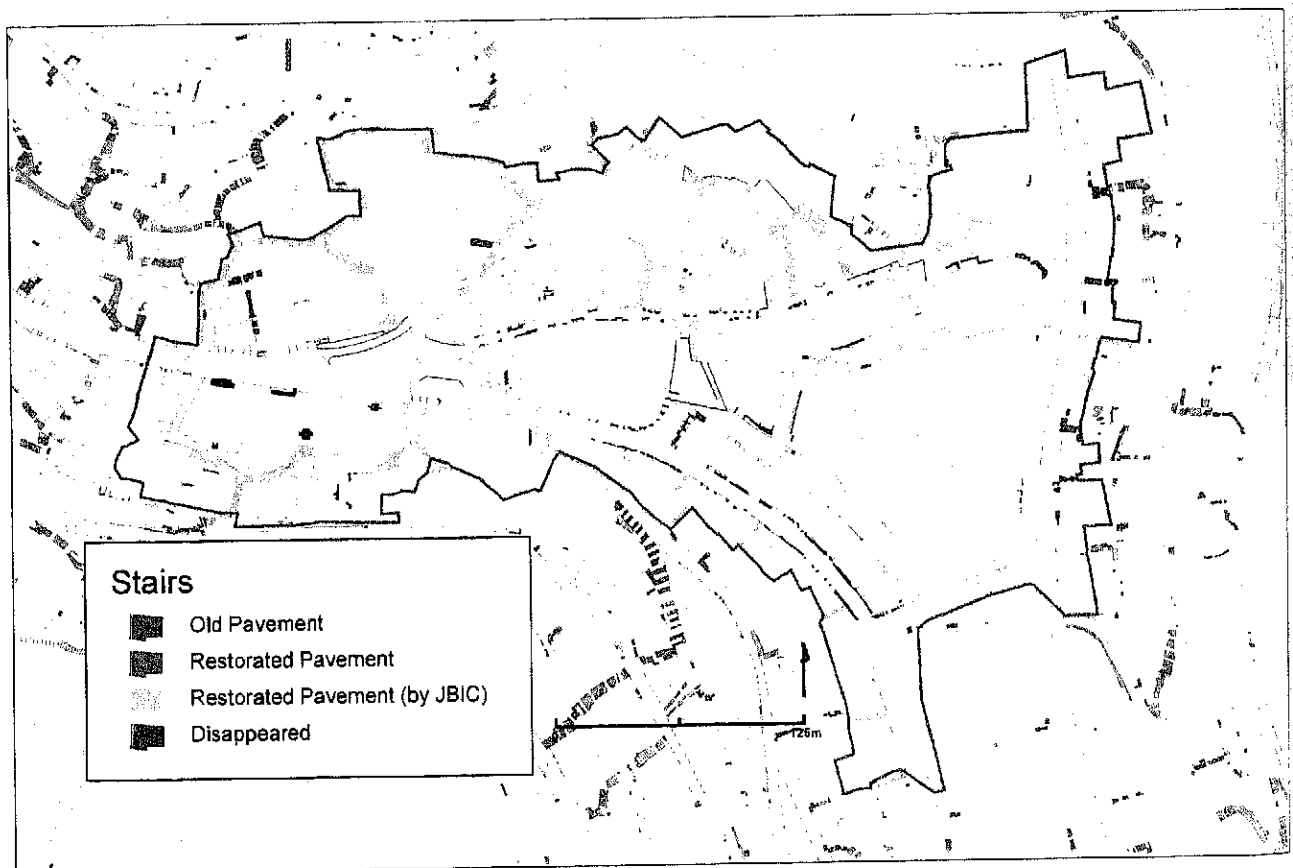


Fig.4-1 Implementation Area (Stairs)

\* SPFA have "Implementation Area".

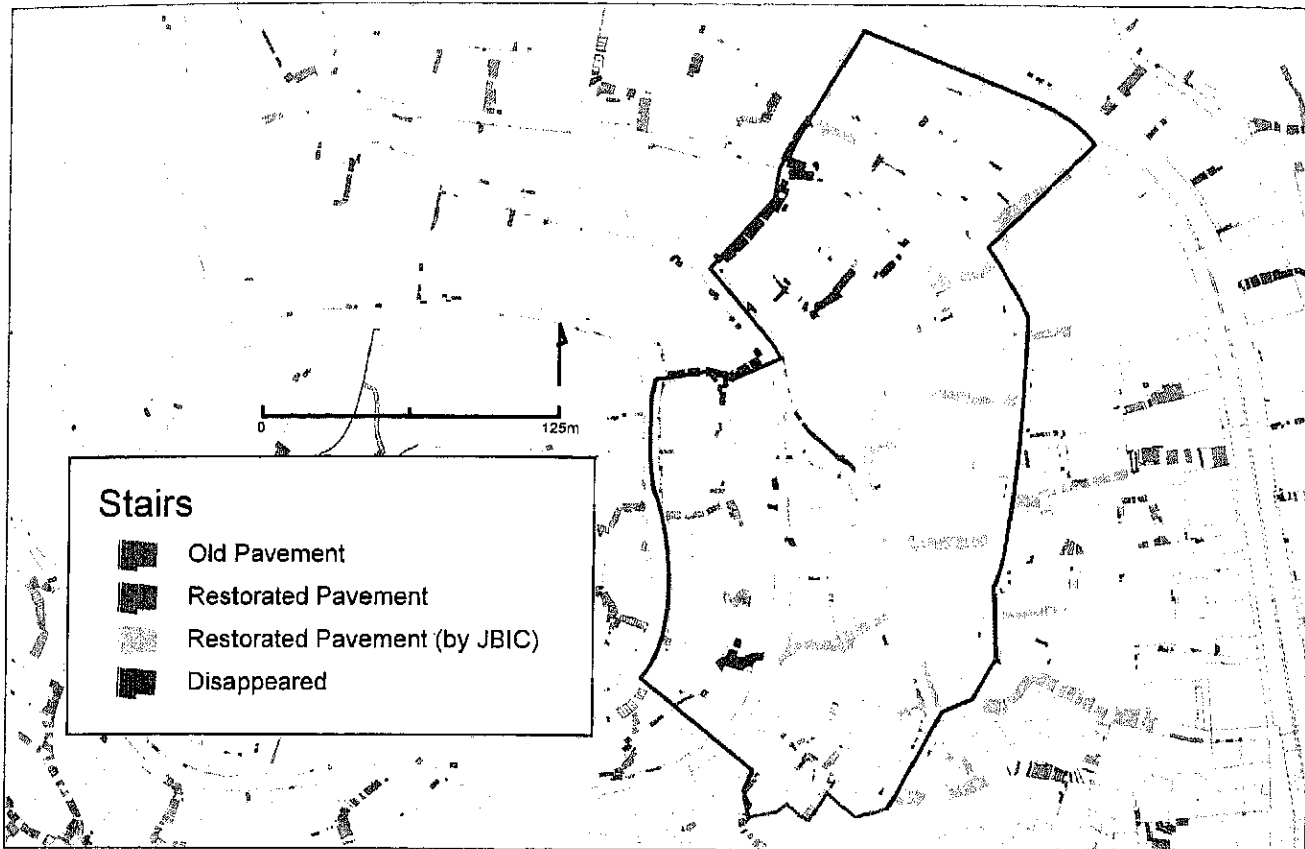


Fig.4-2 Khader Area (Stairs)

### 4.1.2 Caves

We surveyed "Jadour Area".



Fig.4-3 Jadour Area (Caves)



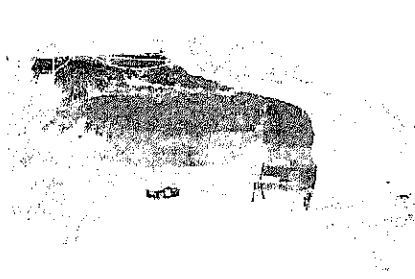
Cave 1



Cave 4



Cave 6



Cave 7



Cave 9



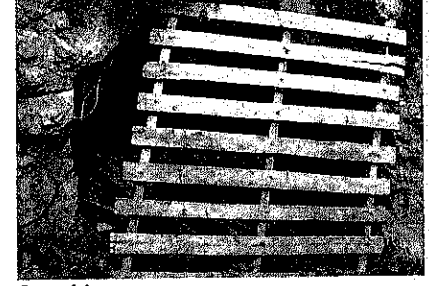
Cave 11



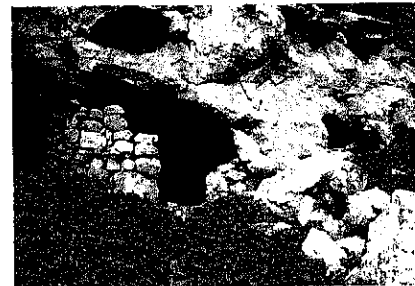
Cave 12



Cave 13



Cave 14



Cave 17



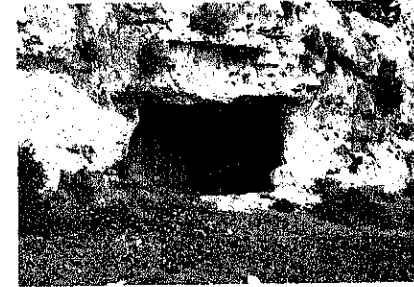
Cave 18



Cave 19



Cave 20



Cave 21



Cave 22



Cave 23



Cave 26



Cave 27



Cave10



Cave15



Cave5



Cave8



Cave10



Cave15



Cave5



Cave8



Cave25

### 4.1.3 Wells

We surveyed "Aizarieh Area", "Jadour Area", "Aizarieh-mq Area", "Wadi-ak Area" and "Thuhour Area".  
But we found only "Aizarieh Area".

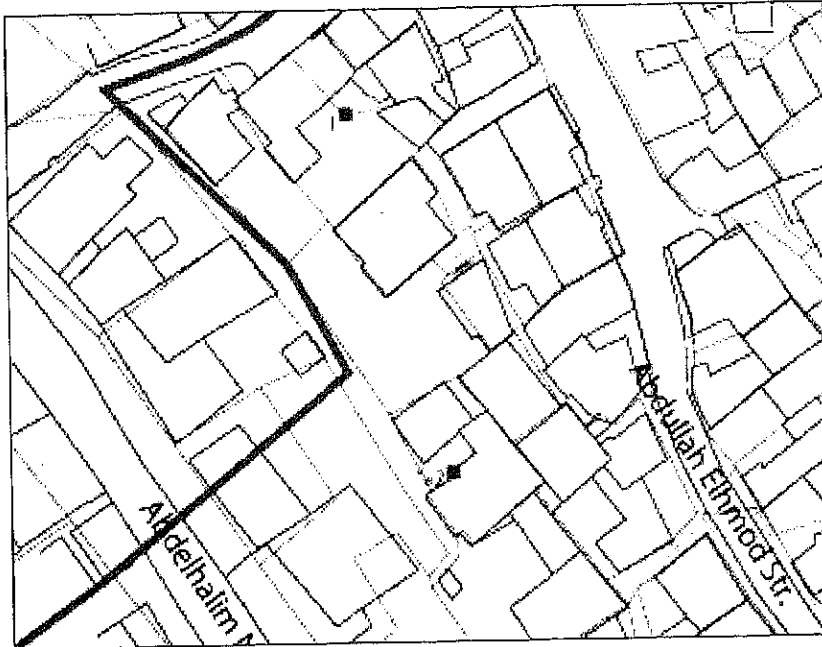
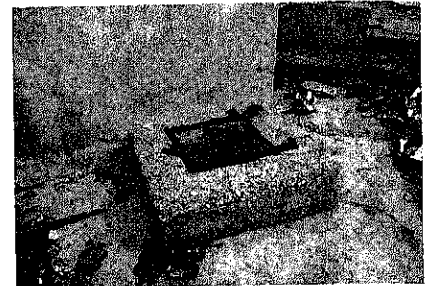


Fig.4-4 Aizarieh Area (Wells)



Well1



Well2

## 4.2 The Environmental Elements

### 4.2.1 Trees

We surveyed "Implementation Area" and "Khader Area", "Aizarieh Area", "Aizarieh-mq Area" and "Khandaq Area".

#### "Survey Trees"

- We did hearing investigation and plot information on the map, if it seems to be historic one.
- Or, We picked that up the tree has any involved in the daily life, even if that isn't an old historic one.
- Compared to old photos.

#### "Points of Evaluation"

- Thickness of the trunk
- form of a tree(tree form)

#### "Species Name"

Trees mentioned in the bible or Trees with historic significance;

- > Pomegranate, Fig, Grape, Almond...

Trees involved in the daily life;

- > Mulberry, Pepper...

a. Implementation Area and Khader Area

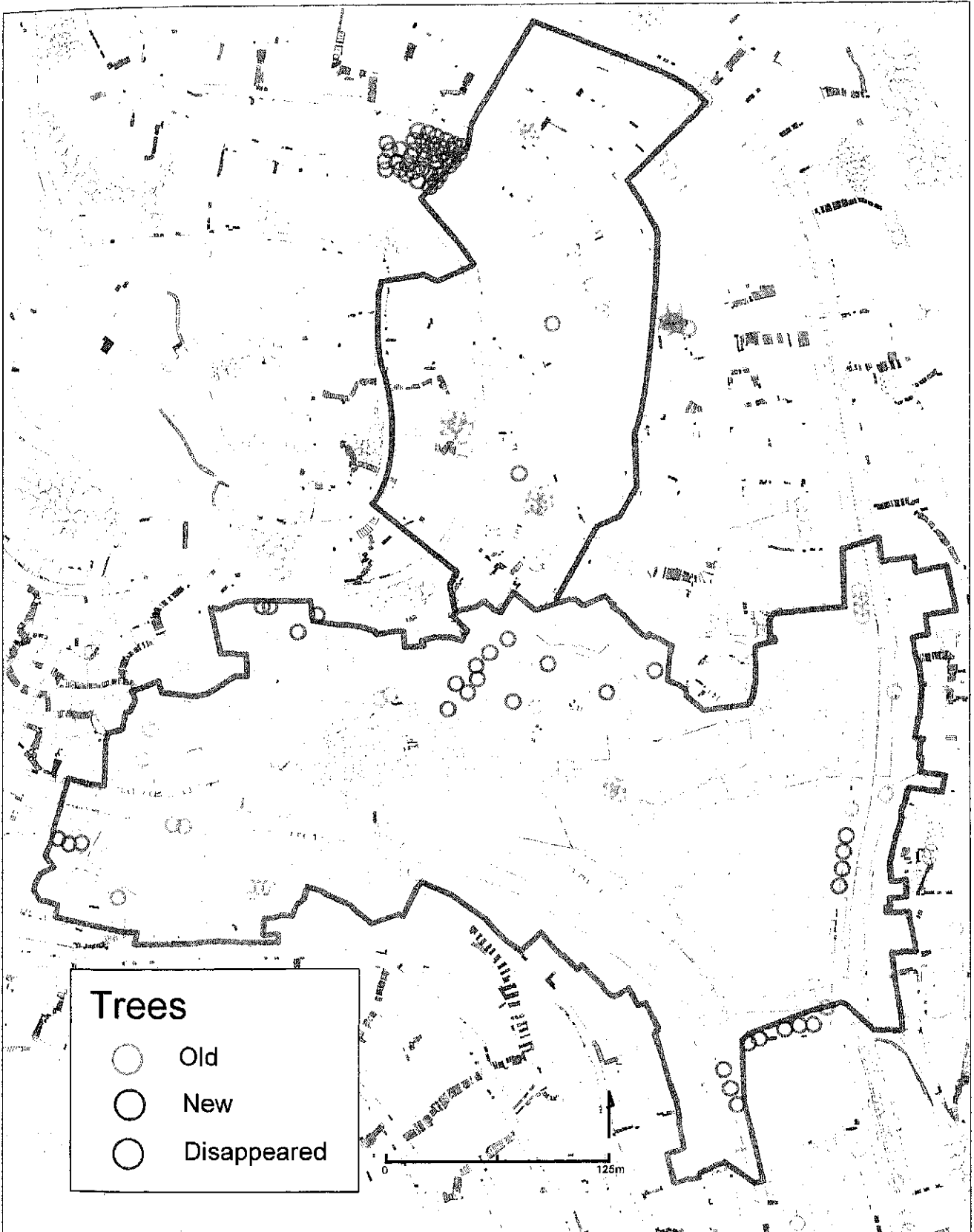


Fig.4-5 Implementation Area and Khader Area (Trees)

## b. Aizarieh Area and Aizarieh-mq Area

Area	No.	Photo No.	Uses	Species	Memo
Aizarieh	A-1	A-1	tree		About 20 years ago
Aizarieh	A-2	A-2	tree		About 50 years ago
Aizarieh	A-3	A-3	tree	apricot	
Aizarieh	A-4	A-4	tree	mulberry	
Aizarieh	A-5	A-5	tree	grape	About 40-50 years ago
Aizarieh	A-6	A-6	tree	grapes	
Aizarieh	A-7	A-7	tree	olive	
Aizarieh	A-8	A-8	tree	olive	
Aizarieh	A-9	A-9	tree		
Aizarieh	A-10	A-10	tree	olive	
Aizarieh	A-11	A-11	tree		
Aizarieh	A-12	A-12	tree	olive	
Aizarieh	A-13	A-13	tree	olive	
Aizarieh	A-14	A-14	tree		
Aizarieh	A-15	A-15	tree	fig	
Aizarieh	A-16	A-16	tree	fig	
Aizarieh	A-17	A-17	tree		
Aizarieh	A-18	A-18	tree	grape	
Aizarieh	A-19	A-19	tree	grape	
Aizarieh	A-20	A-20	tree	olive	
Aizarieh	A-21	A-21	tree	grape	
Aizarieh	A-22	A-22	tree	olive	
Aizarieh	A-23	A-23	tree	fig	
Aizarieh	A-24	A-24	tree		
Aizarieh	A-25	A-25	tree	fig	
Aizarieh	A-26	A-26	tree		
Aizarieh	A-27	A-27	tree	almond	
Aizarieh	A-28	A-28	tree	olive	
Aizarieh	A-29	A-29	tree		
Aizarieh	A-30	A-30	tree		
Aizarieh	A-31	A-31	tree	loquat	
Aizarieh	A-32	A-32	tree	grape	
Aizarieh	A-33	A-33	tree		
Aizarieh	A-34	A-34	tree		
Aizarieh	A-35	A-35	tree		
Aizarieh	A-36	A-36	tree		
Aizarieh	A-37	A-37	tree		
Aizarieh	A-38	A-38	tree	grape	
Aizarieh	A-39	A-39	tree	olive	
Aizarieh	A-40	A-40	tree	grape	About 35 years ago
Aizarieh	A-41	A-41	tree		
Aizarieh	A-42	A-42	tree		
Aizarieh	A-43	A-43	tree	olive	
Aizarieh	A-44	A-44	tree		
Aizarieh	A-45	A-45	tree	olive	
Aizarieh	A-46	A-46	tree	fig	
Aizarieh	A-47	A-47	tree	grape	
Aizarieh	A-48	A-48	tree		
Aizarieh	A-49	A-49	tree		About 50 years ago
Aizarieh	A-50	A-50	tree		
Aizarieh	A-51	A-51	tree	fig	
Aizarieh	A-52	A-52	tree	pomegranate	
Aizarieh	A-53	A-53	tree	loquat	
Aizarieh	A-54	A-54	tree	lemon	
Aizarieh	A-55	A-55	tree	loquat	
Aizarieh	A-56	A-56	tree	cedar	
Aizarieh	A-57	A-57	tree	fig	
Aizarieh	A-58	A-58	tree	olive	
Aizarieh	A-59	A-59	tree	fig	
Aizarieh	A-60	A-60	tree	lemon	
Aizarieh	A-61	A-61	tree	olive	
Aizarieh	A-62	A-62	tree	olive	
Aizarieh	A-63	A-63	tree	olive	
Aizarieh	A-64	A-64	tree	grape	
Aizarieh	A-65	A-65	tree	olive	
Aizarieh	A-66	A-66	tree	olive	
Aizarieh	A-67	A-67	tree	olive	
Aizarieh	A-68	A-68	tree	fig	
Aizarieh	A-69	A-69	tree	loquat	
Aizarieh	A-70	A-70	tree	lemon	
Aizarieh	A-71	A-71	tree	fig	
Aizarieh	A-72	A-72	tree	olive	
Aizarieh	A-73	A-73	tree	olive	

Aizarieh	A-74	A-74	tree	olive	
Aizarieh	A-75	A-75	tree	grape	
Aizarieh	A-76	A-76	tree	lemon	
Aizarieh	A-77	A-77	tree	almond	
Aizarieh	A-78	A-78	tree	olive	
Aizarieh	A-79	A-79	tree	olive	
Aizarieh	A-80	A-80	tree	olive	
Aizarieh	A-81	A-81	tree		
Aizarieh	A-82	A-82	tree	grape	
Aizarieh	A-83	A-83	tree		
Aizarieh	A-84	A-84	tree	olive	
Aizarieh	A-85	A-85	tree	olive	
Aizarieh	A-86	A-86	tree	olive	
Aizarieh	A-87	A-87	tree	loquat	
Aizarieh	A-88	A-88	tree	fig	
Aizarieh	A-89	A-89	tree	cedar	
Aizarieh	A-90	A-90	tree		
Aizarieh	A-91	A-91	tree	fig	
Aizarieh	A-92	A-92	tree	olive	
Aizarieh	A-93	A-93	tree	grape	
Aizarieh	A-94	A-94	tree	olive	
Aizarieh	A-95	A-95	tree	olive	
Aizarieh	A-96	A-96	tree	cedar	
Aizarieh	A-97	A-97	tree	grape	
Aizarieh	A-98	A-98	tree	grape	
Aizarieh	A-99	A-99	tree	olive	
Aizarieh	A-100	A-100	tree	olive	
Aizarieh	A-101	A-101	tree	olive	
Aizarieh	A-102	A-102	tree	olive	
Aizarieh	A-103	A-103	tree	cedar	
Aizarieh	A-104	A-104	tree	cedar	
Aizarieh	A-105	A-105	tree	grape	
Aizarieh	A-106	A-106	tree	fig	
Aizarieh	A-107	A-107	tree	grape	
Aizarieh	A-108	A-108	tree		
Aizarieh	A-109	A-109	tree		
Aizarieh	A-110	A-110	tree	grape	
Aizarieh	A-111	A-111	tree	cedar	
Aizarieh	A-112	A-112	tree		
Aizarieh	A-113	A-113	tree		
Aizarieh	A-114	A-114	tree	olive	
Aizarieh	A-115	A-115	tree	olive	
Aizarieh	A-116	A-116	tree		
Aizarieh	A-117	A-117	tree	grape	
Aizarieh	A-118	A-118	tree	grape	
Aizarieh	A-119	A-119	tree	grape	
Aizarieh	A-120	A-120	tree	grape	
Aizarieh	A-121	A-121	tree	grape	
Aizarieh	A-122	A-122	tree	grape	
Aizarieh	A-123	A-123	tree	fig	
Aizarieh	A-124	A-124	tree	almond	
Aizarieh	A-125	A-125	tree	olive	
Aizarieh	A-126	A-126	tree	olive	
Aizarieh	A-127	A-127	tree	olive	
Aizarieh	A-128	A-128	tree	cedar	
Aizarieh	A-129	A-129	tree	olive	
Aizarieh	A-130	A-130	tree	fig	
Aizarieh	A-131	A-131	tree	olive	
Aizarieh	A-132	A-132	tree	cedar	
Aizarieh	A-133	A-133	tree	pine	
Aizarieh	A-134	A-134	tree		
Aizarieh	A-135	A-135	tree		
Aizarieh	A-136	A-136	tree	olive	
Aizarieh	A-137	A-137	tree	cedar	
Aizarieh	A-138	A-138	tree	fig	
Aizarieh	A-139	A-139	tree	cedar	
Aizarieh	A-140	A-140	tree		
Aizarieh	A-141	A-141	tree	fig	
Aizarieh	A-142	A-142	tree	fig	
Aizarieh	A-143	A-143	tree	almond	
Aizarieh	A-144	A-144	tree	fig	
Aizarieh	A-145	A-145	tree	fig	
Aizarieh	A-146	A-146	tree	loquat	
Aizarieh	A-147	A-147	tree	lemon	



Aizarieh	A-148	A-148	tree	pomegranate	
Aizarieh	A-149	A-149	tree	almond	
Aizarieh	A-150	A-150	tree	fig	
Aizarieh	A-151	A-151	tree	fig	
Aizarieh	A-152	A-152	tree		
Aizarieh	A-153	A-153	tree	grape	
Aizarieh	A-154	A-154	tree	grape	
Aizarieh	A-155	A-155	tree	grape	
Aizarieh	A-156	A-156	tree	olive	
Aizarieh	A-157	A-157	tree	olive	
Aizarieh	A-158	A-158	tree	olive	
Aizarieh	A-159	A-159	tree	loquat	
Aizarieh	A-160	A-160	tree	almond	
Aizarieh	A-161	A-161	tree	almond	
Aizarieh	A-162	A-162	tree	fig	
Aizarieh	A-163	A-163	tree	fig	
Aizarieh	A-164	A-164	tree	cedar	
Aizarieh	A-165	A-165	tree	fig	
Aizarieh	A-166	A-166	tree		
Aizarieh	A-167	A-167	tree	pomegranate	
Aizarieh	A-168	A-168	tree	lemon	
Aizarieh	A-169	A-169	tree	pomegranate	
Aizarieh	A-170	A-170	tree	fig	
Aizarieh	A-171	A-171	tree	olive	
Aizarieh	A-172	A-172	tree		
Aizarieh	A-173	A-173	tree	pomegranate	
Aizarieh	A-174	A-174	tree		
Aizarieh	A-175	A-175	tree	olive	
Aizarieh	A-176	A-176	tree	olive	
Aizarieh	A-177	A-177	tree		
Aizarieh	A-178	A-178	tree	grape	
Aizarieh	A-179	A-179	tree	grape	
Aizarieh	A-180	A-180	tree	grape	
Aizarieh	A-181	A-181	tree	olive	
Aizarieh	A-182	A-182	tree	loquat	
Aizarieh	A-183	A-183	tree	grape	
Aizarieh	A-184	A-184	tree	grape	
Aizarieh	A-185	A-185	tree	grape	
Aizarieh	A-186	A-186	tree		
Aizarieh	A-187	A-187	tree		
Aizarieh	A-188	A-188	tree	lemon	
Aizarieh	A-189	A-189	tree	grape	
Aizarieh	A-190	A-190	tree	grape	
Aizarieh	A-191	A-191	tree	grape	

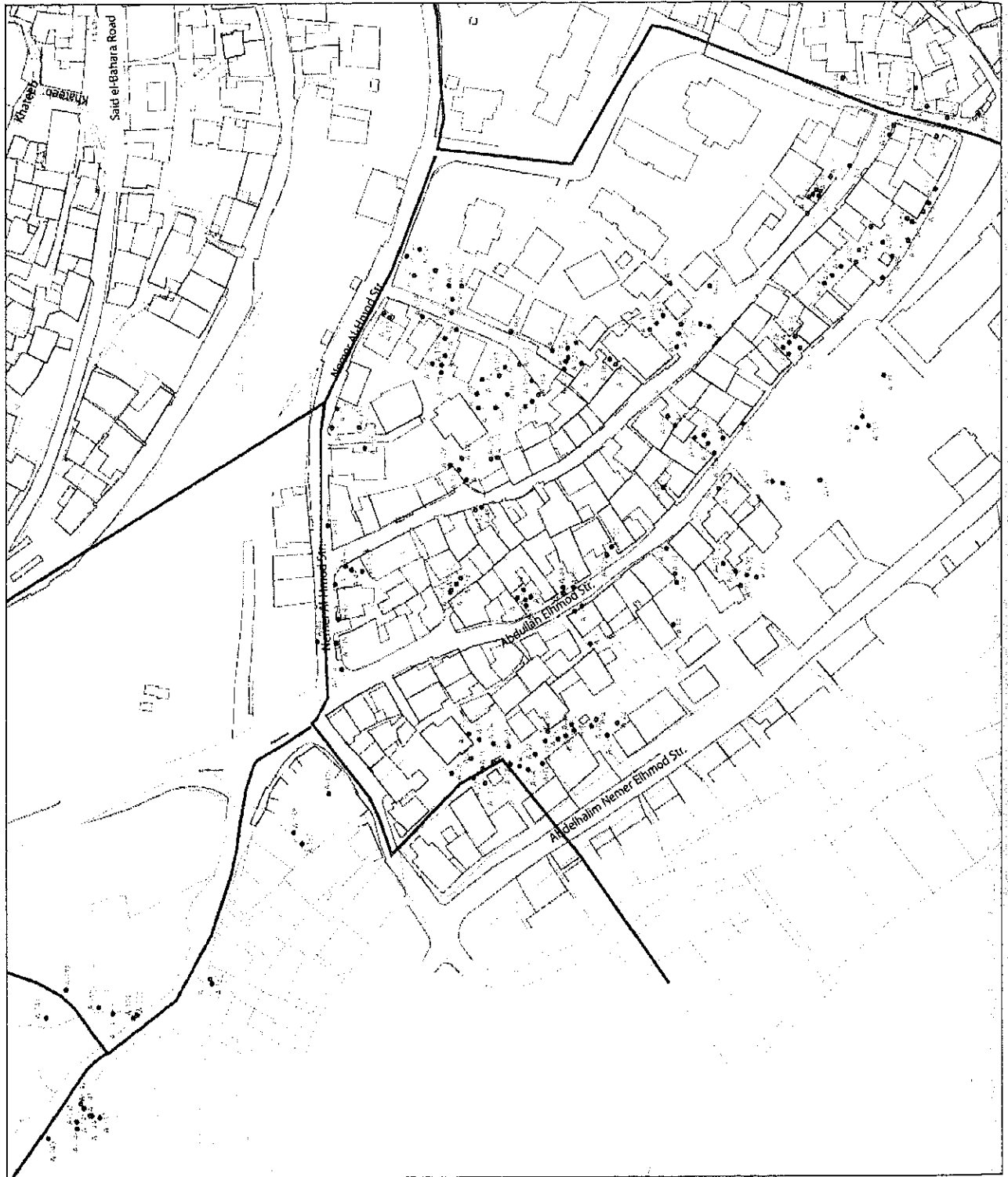


Fig.4-6 Alzarieh and Alzarieh-mq Area (Trees)



A-1



A-2



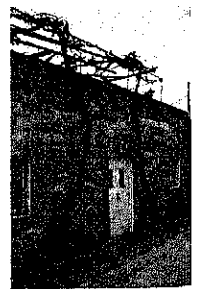
A-3



A-4



A-5



A-6



A-7



A-8



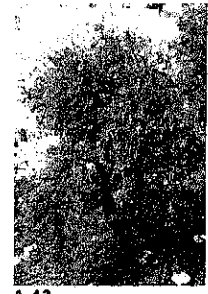
A-9



A-10



A-11



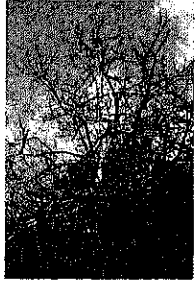
A-12



A-13



A-14



A-15



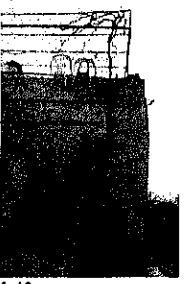
A-16



A-17



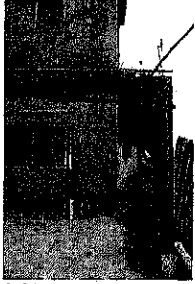
A-18



A-19



A-20



A-21



A-22



A-23



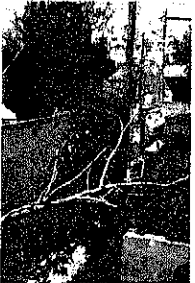
A-24



A-25



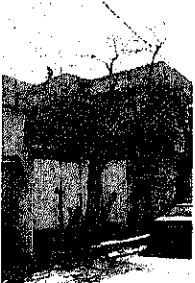
A-26



A-27



A-28



A-29



A-30



A-31



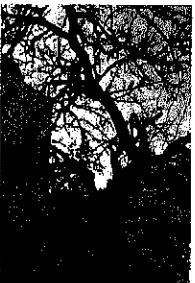
A-32



A-33



A-34



A-35



A-36



A-37



A-38



A-39



A-40



A-41



A-42



A-43



A-44



A-45



A-46



A-47



A-48



A-49



A-50



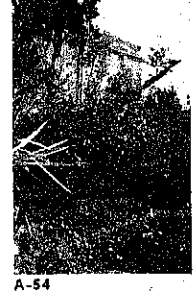
A-51



A-52



A-53



A-54



A-55



A-56



A-57



A-58



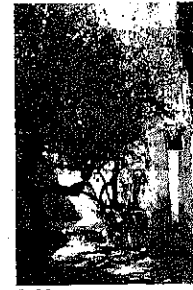
A-59



A-60



A-61



A-62



A-63



A-64



A-65



A-66



A-67



A-68



A-69



A-70



A-71



A-72



A-73



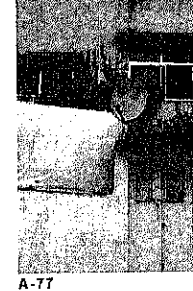
A-74



A-75



A-76



A-77



A-78

A-73

A-74

A-75

A-76

A-77

A-78



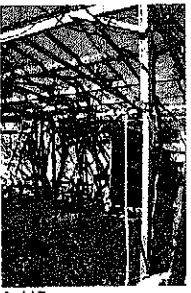




A-116



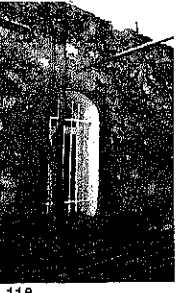
A-116



A-117



A-118



A-119



A-120



A-121



A-122



A-123



A-124



A-125



A-126



A-127



A-128



A-129



A-130



A-131



A-132



A-133



A-134



A-135



A-136



A-137



A-138



A-139



A-140



A-141



A-142



A-143



A-144



A-146



A-146



A-147



A-148



A-149



A-150



A-151



A-152



A-153



A-154



A-155



A-156



A-157



A-158



A-159



A-160



A-161



A-162



A-163



A-164



A-165



A-166



A-167



A-168



A-169



A-170



A-171



A-172



A-173



A-174



A-175



A-176



A-177



A-178



A-179



A-180



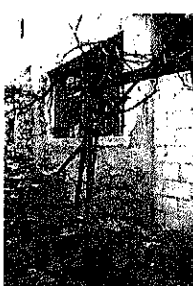
A-181



A-182



A-183



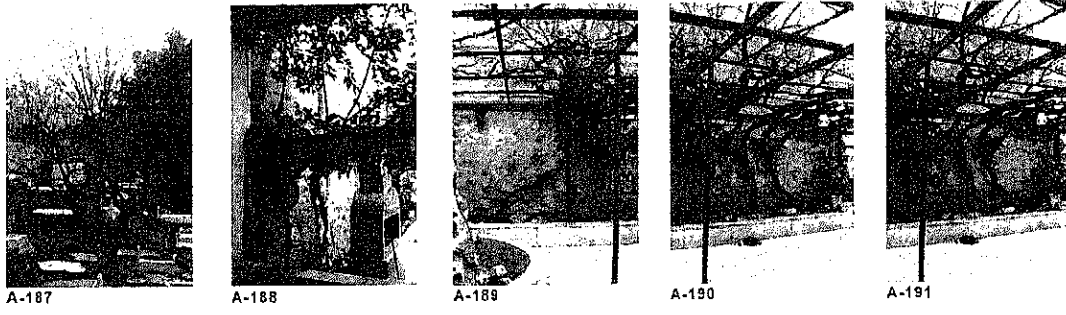
A-184



A-185



A-186



c. Khandaq Area

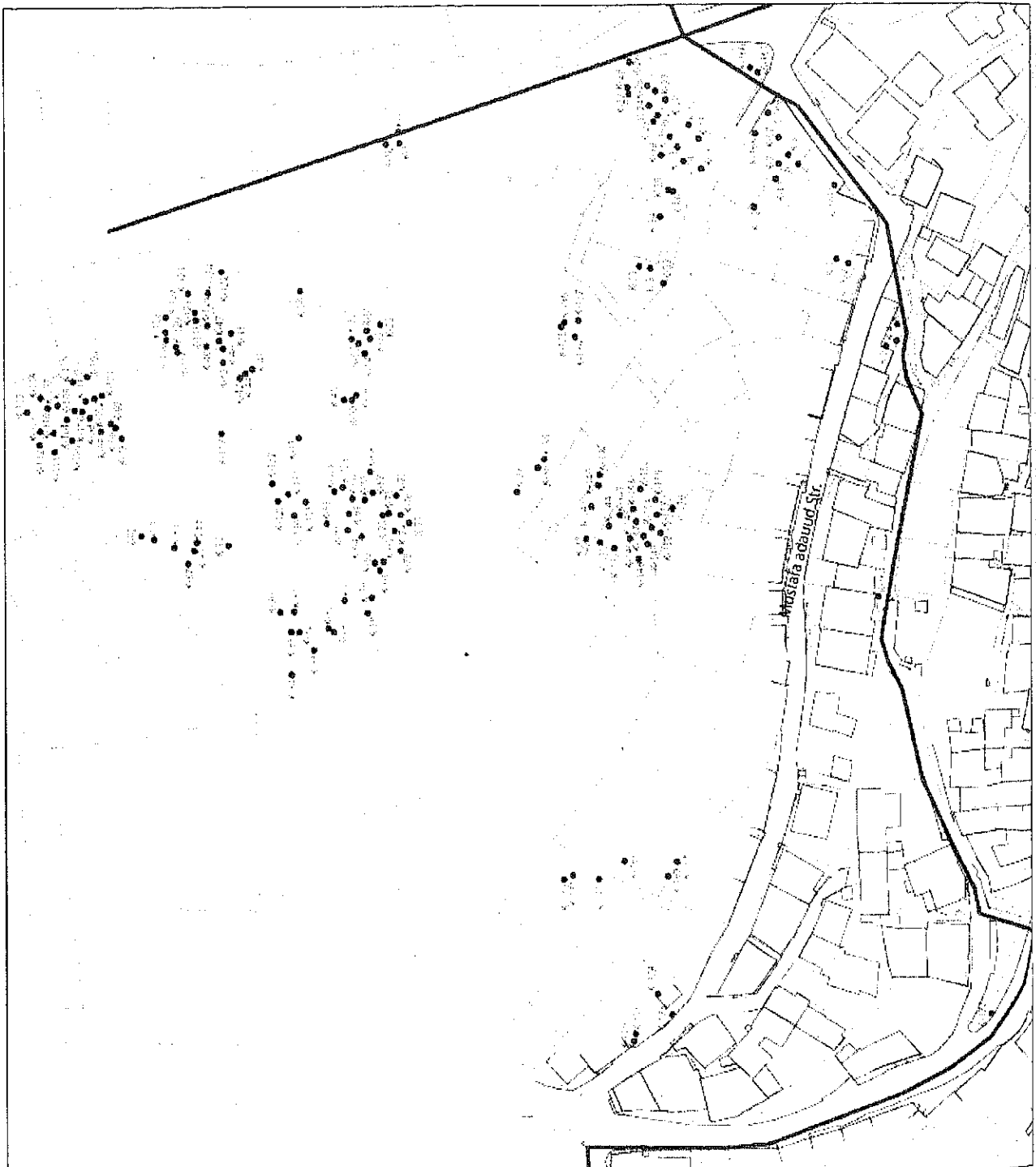


Fig.4-7 Khandaq Area (Trees)



Area	No.	Photo No.	Uses	Species	Memo
Kandaq	K-1	K-1	tree	grape	
Kandaq	K-2	K-2	tree		
Kandaq	K-3	K-3	tree		
Kandaq	K-4	K-4	tree	olive	
Kandaq	K-5	K-5	tree	fig	
Kandaq	K-6	K-6	tree	lemon	
Kandaq	K-7	K-7	tree	lemon	
Kandaq	K-8	K-8	tree	fig	
Kandaq	K-9	K-9	tree	fig	
Kandaq	K-10	K-10	tree	grape	
Kandaq	K-11	K-11	tree	olive	
Kandaq	K-12	K-12	tree	grape	
Kandaq	K-13	K-13	tree	fig	
Kandaq	K-14	K-14	tree		
Kandaq	K-15	K-15	tree	olive	
Kandaq	K-16	K-16	tree	fig	
Kandaq	K-17	K-17	tree		
Kandaq	K-18	K-18	tree	fig	
Kandaq	K-19	K-19	tree	grape	
Kandaq	K-20	K-20	tree	fig	
Kandaq	K-21	K-21	tree	pomegranate	
Kandaq	K-22	K-22	tree	fig	
Kandaq	K-23	K-23	tree	pomegranate	
Kandaq	K-24	K-24	tree	pomegranate	
Kandaq	K-25	K-25	tree	pomegranate	
Kandaq	K-26	K-26	tree	cedar	
Kandaq	K-27	K-27	tree	olive	
Kandaq	K-28	K-28	tree	fig	
Kandaq	K-29	K-29	tree	almond	
Kandaq	K-30	K-30	tree	grape	
Kandaq	K-31	K-31	tree		
Kandaq	K-32	K-32	tree	grape	
Kandaq	K-33	K-33	tree	grape	
Kandaq	K-34	K-34	tree	lemon	
Kandaq	K-35	K-35	tree	grape	
Kandaq	K-36	K-36	tree	fig	
Kandaq	K-37	K-37	tree	grape	
Kandaq	K-38	K-38	tree	loquat	
Kandaq	K-39	K-39	tree	grape	
Kandaq	K-40	K-40	tree	lemon	
Kandaq	K-41	K-41	tree	fig	
Kandaq	K-42	K-42	tree	olive	
Kandaq	K-43	K-43	tree	fig	
Kandaq	K-44	K-44	tree	almond	
Kandaq	K-45	K-45	tree	olive	
Kandaq	K-46	K-46	tree	lemon	
Kandaq	K-47	K-47	tree	olive	
Kandaq	K-48	K-48	tree	olive	
Kandaq	K-49	K-49	tree	olive	
Kandaq	K-50	K-50	tree	cedar	
Kandaq	K-51	K-51	tree	olive	
Kandaq	K-52	K-52	tree	olive	
Kandaq	K-53	K-53	tree	olive	
Kandaq	K-54	K-54	tree	olive	
Kandaq	K-55	K-55	tree		
Kandaq	K-56	K-56	tree	grape	
Kandaq	K-57	K-57	tree	olive	
Kandaq	K-58	K-58	tree	pine	
Kandaq	K-59	K-59	tree	pine	
Kandaq	K-60	K-60	tree	pine	
Kandaq	K-61	K-61	tree	pomegranate	
Kandaq	K-62	K-62	tree	fig	
Kandaq	K-63	K-63	tree		
Kandaq	K-64	K-64	tree	lemon	
Kandaq	K-65	K-65	tree	almond	
Kandaq	K-66	K-66	tree	fig	
Kandaq	K-67	K-67	tree	pine	
Kandaq	K-68	K-68	tree	olive	
Kandaq	K-69	K-69	tree	fig	
Kandaq	K-70	K-70	tree	fig	
Kandaq	K-71	K-71	tree	almond	
Kandaq	K-72	K-72	tree	olive	
Kandaq	K-73	K-73	tree	olive	
Kandaq	K-74	K-74	tree	olive	
Kandaq	K-75	K-75	tree	olive	

Kandaq	K-76	K-76	tree	olive	
Kandaq	K-77	K-77	tree	olive	
Kandaq	K-78	K-78	tree		
Kandaq	K-79	K-79	tree	grape	
Kandaq	K-80	K-80	tree	grape	
Kandaq	K-81	K-81	tree	lemon	
Kandaq	K-82	K-82	tree	pomegranate	
Kandaq	K-83	K-83	tree	olive	
Kandaq	K-84	K-84	tree	pine	
Kandaq	K-85	K-85	tree	grape	
Kandaq	K-86	K-86	tree		
Kandaq	K-87	K-87	tree	olive	
Kandaq	K-88	K-88	tree	fig	
Kandaq	K-89	K-89	tree	olive	
Kandaq	K-90	K-90	tree	pomegranate	
Kandaq	K-91	K-91	tree	grape	
Kandaq	K-92	K-92	tree	fig	
Kandaq	K-93	K-93	tree	olive	
Kandaq	K-94	K-94	tree	grape	
Kandaq	K-95	K-95	tree	loquat	
Kandaq	K-96	K-96	tree	fig	
Kandaq	K-97	K-97	tree	fig	
Kandaq	K-98	K-98	tree	olive	
Kandaq	K-99	K-99	tree	grape	
Kandaq	K-100	K-100	tree	fig	
Kandaq	K-101	K-101	tree	olive	
Kandaq	K-102	K-102	tree	olive	
Kandaq	K-103	K-103	tree	olive	
Kandaq	K-104	K-104	tree	olive	
Kandaq	K-105	K-105	tree	grape	
Kandaq	K-106	K-106	tree	loquat	
Kandaq	K-107	K-107	tree	olive	
Kandaq	K-108	K-108	tree	olive	
Kandaq	K-109	K-109	tree	olive	
Kandaq	K-110	K-110	tree	olive	
Kandaq	K-111	K-111	tree	fig	
Kandaq	K-112	K-112	tree	olive	
Kandaq	K-113	K-113	tree	olive	
Kandaq	K-114	K-114	tree	fig	
Kandaq	K-115	K-115	tree	olive	
Kandaq	K-116	K-116	tree	fig	
Kandaq	K-117	K-117	tree	fig	
Kandaq	K-118	K-118	tree	olive	
Kandaq	K-119	K-119	tree	grape	
Kandaq	K-120	K-120	tree	lemon	
Kandaq	K-121	K-121	tree	olive	
Kandaq	K-122	K-122	tree	cedar	
Kandaq	K-123	K-123	tree	olive	
Kandaq	K-124	K-124	tree	fig	
Kandaq	K-125	K-125	tree	fig	
Kandaq	K-126	K-126	tree	grape	
Kandaq	K-127	K-127	tree	grape	
Kandaq	K-128	K-128	tree	grape	
Kandaq	K-129	K-129	tree	fig	
Kandaq	K-130	K-130	tree	olive	
Kandaq	K-131	K-131	tree	fig	
Kandaq	K-132	K-132	tree	fig	
Kandaq	K-133	K-133	tree	almond	
Kandaq	K-134	K-134	tree	lemon	
Kandaq	K-135	K-135	tree	almond	
Kandaq	K-136	K-136	tree	fig	
Kandaq	K-137	K-137	tree	grape	
Kandaq	K-138	K-138	tree	fig	
Kandaq	K-139	K-139	tree	olive	
Kandaq	K-140	K-140	tree	olive	
Kandaq	K-141	K-141	tree	loquat	
Kandaq	K-142	K-142	tree	almond	
Kandaq	K-143	K-143	tree	loquat	
Kandaq	K-144	K-144	tree	olive	
Kandaq	K-145	K-145	tree	fig	
Kandaq	K-146	K-146	tree	fig	
Kandaq	K-147	K-147	tree	fig	
Kandaq	K-148	K-148	tree	olive	
Kandaq	K-149	K-149	tree		
Kandaq	K-150	K-150	tree	olive	
Kandaq	K-151	K-151	tree	fig	

Kandaq	K-152	K-152	tree	fig	
Kandaq	K-153	K-153	tree	fig	
Kandaq	K-154	K-154	tree	fig	
Kandaq	K-155	K-155	tree	fig	
Kandaq	K-156	K-156	tree	almond	
Kandaq	K-157	K-157	tree		
Kandaq	K-158	K-158	tree		
Kandaq	K-159	K-159	tree	fig	
Kandaq	K-160	K-160	tree	cedar	
Kandaq	K-161	K-161	tree	cedar	
Kandaq	K-162	K-162	tree	lemon	
Kandaq	K-163	K-163	tree	olive	
Kandaq	K-164	K-164	tree	fig	
Kandaq	K-165	K-165	tree	fig	
Kandaq	K-166	K-166	tree	fig	
Kandaq	K-167	K-167	tree		
Kandaq	K-168	K-168	tree	fig	
Kandaq	K-169	K-169	tree	cedar	
Kandaq	K-170	K-170	tree	pine	
Kandaq	K-171	K-171	tree		
Kandaq	K-172	K-172	tree	almond	
Kandaq	K-173	K-173	tree	olive	
Kandaq	K-174	K-174	tree	olive	
Kandaq	K-175	K-175	tree	fig	
Kandaq	K-176	K-176	tree		
Kandaq	K-177	K-177	tree	fig	
Kandaq	K-178	K-178	tree	fig	
Kandaq	K-179	K-179	tree	olive	
Kandaq	K-180	K-180	tree	fig	
Kandaq	K-181	K-181	tree	fig	
Kandaq	K-182	K-182	tree	fig	
Kandaq	K-183	K-183	tree	olive	
Kandaq	K-184	K-184	tree	olive	



K-1



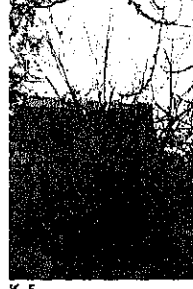
K-2



K-3



K-4



K-5



K-6



K-7



K-8



K-9



K-10



K-11



K-12



K-13



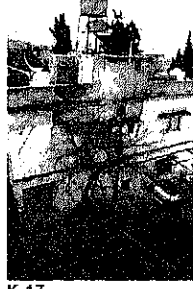
K-14



K-15



K-16



K-17



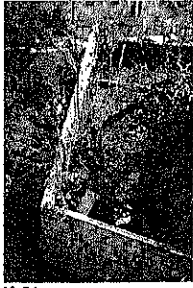
K-18



K-19



K-20



K-21



K-22



K-23



K-24



K-25



K-26



K-27



K-28



K-29



K-30



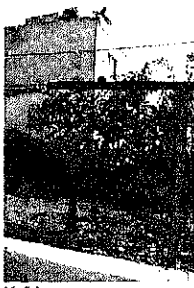
K-31



K-32



K-33



K-34



K-35



K-36





K-73



K-74



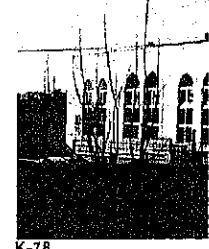
K-75



K-76



K-77



K-78



K-79



K-80



K-81



K-82



K-83



K-84



K-85



K-86



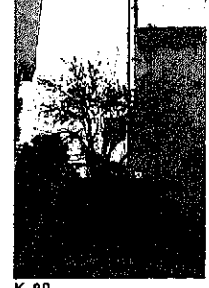
K-87



K-88



K-89



K-90



K-91



K-92



K-93



K-94



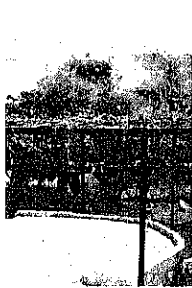
K-96



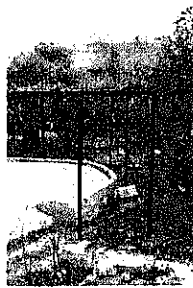
K-96



K-97



K-98



K-99



K-100



K-101



K-102



K-103



K-104



K-105



K-106



K-107



K-108





K-109



K-110



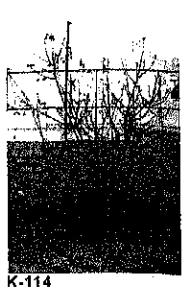
K-111



K-112



K-113



K-114



K-115



K-116



K-117



K-118



K-119



K-120



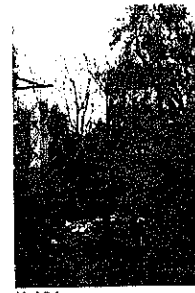
K-121



K-122



K-123



K-124



K-125



K-128



K-127



K-128



K-129



K-130



K-131



K-132



K-133



K-134



K-135



K-136



K-137



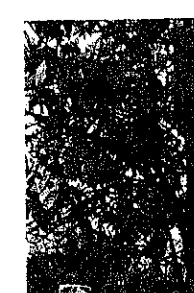
K-138



K-139



K-140



K-141



K-142



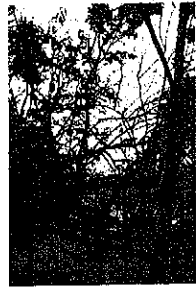
K-143



K-144



K-145



K-146



K-147



K-148



K-149



K-150



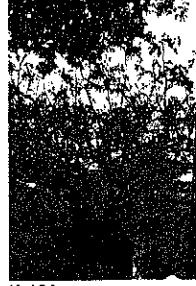
K-151



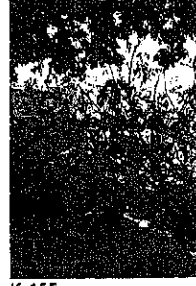
K-152



K-153



K-154



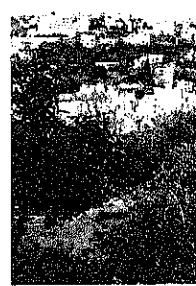
K-155



K-156



K-157



K-158



K-159



K-160



K-161



K-162



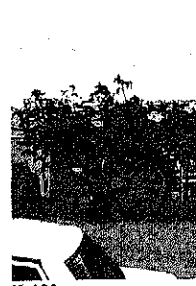
K-163



K-164



K-165



K-166



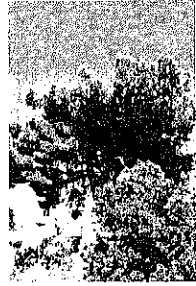
K-167



K-168



K-169



K-170



K-171



K-172



K-173



K-174



K-175



K-176



K-177



K-178



K-179



K-180



K-181



K-182



K-183



K-184