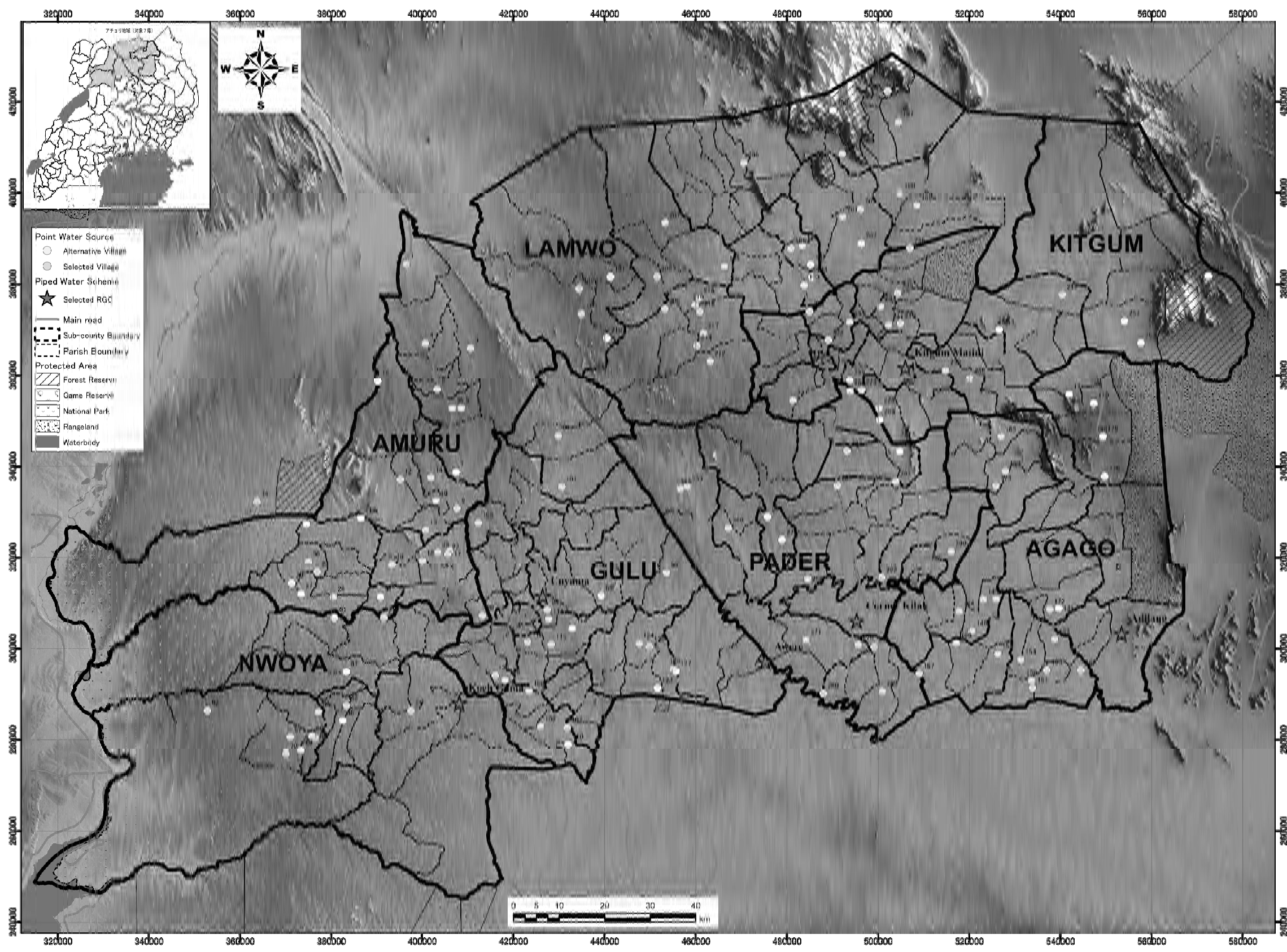


概略設計図面集

概略設計図面リスト

番号	図面タイトル
	<u>一般図</u>
1.	対象村落・RGC位置図
	<u>ハンドポンプ付深井戸施設</u>
2.	深井戸標準構造図及び上部工構造図(ハンドポンプ据付図)
	<u>管路給水施設</u>
3.	施設配置計画図(コチゴマ RGC)
4.	施設配置計画図(ウニヤマ RGC)
5.	施設配置計画図(アウエレ RGC)
6.	施設配置計画図(キトゥグムマティディ RGC)
7.	施設配置計画図(コーナーキラク RGC)
8.	施設配置計画図(アディラン RGC)
9.	取水施設一般構造図
10.	高架水槽一般構造図
11.	高架水槽及び太陽光発電施設一般図
12.	太陽光発電施設(太陽光発電モジュール)
13.	太陽光発電施設(防護柵及びゲート)
14.	太陽光発電施設(警備小屋一般図)
15.	管路柵標準図
16.	公共水栓一般構造図



District	No.	Village	District	No.	Village
	8	Papwoya East		207	Liri Central
	21	Coorom		199	Morroto East
	4	Paclo East		196	Obere
	12	Olira		217	Arusha (Aloy)
	10	Kal Centre		214	Amia (Niro mt)
	13	Kali Kasi A		188	Cem (Cem)
	32	Reckicele		216	Kafua
	28	Labongo		215	Dyangbu
	23	Okur		205	Biber (Biber)
	33	Lamolo Coke		208	Lanywang E-wilagan
	17	Abyee		206	Orua North
	18	Amora		180	Apyeta Central
	3	Okdi North		209	Ayutu-lupin/Banza
	19	Opok		218	Kanama central H C III
	9	Puono		212	Pwema central (Tee Klasa)
	20	Pukere		197	Lorombenge B
	14	Albera		201	Lobihuka (obokola)
	35	Pukere West		190	Pobutu
	5	Pukere East		182	Padwat West (Lalim Orka)
	34	Apaa		195	Tunbahu West
	1	Bibia East		185	Dech East
	30	Mitema		186	Dog Lokum East
	7	Pukamo		184	Lio-Tee okworo
	25	Teddi		187	Tadi South
	31	Ogeli		181	Padwat Central (Padwat P/S)
	27	Amoyokama		192	Lagwal P/S
	29	Lujoro		202	Langole (Keca)
	15	Cen		210	Ajan-ogali (Alera)
	11	Andara		200	Lumwaka A
	67	Pawtonero Central		234	Panyum "A"
	65	Patra East		241	Lacen Oruga West
	66	Patra West		229	Akino
	68	Pawtonero East		246	Labworomor
	62	Pumolango		225	Langii
	64	Lodi		239	Yepa A
	70	Lagazi		230	Gulu gwen Orua B
	48	Kal		242	Winyoro-Pwony
	54	Agonga B		231	Ogetoldee Trading centre
	46	Alago		232	Pagen Central
	37	Bwobonam B		235	Ayom Okola "B"
	40	Latekodong		228	Rucumaci
	106	Labworomor		221	Obadi central
	96	Agoro I		240	Juba
	116	Kal A and B		233	Panolo central
	105	Adak		252	Orobol
	111	Ariya		253	Agora
	124	Abeii		243	Lakokole
	125	Lamnyer		249	Lohale
	101	Kiteny Central		266	Lapoyokree
	115	Obwola		259	Nek-Nono
	90	Onel		264	Tee rworo
	136	Owak		292	Lapeny
	108	Ibar		268	Amigo von
	95	Gulu PTC		269	Libi
	107	Along		271	Parvech Tukee east
	138	Lamin Lawao		270	Atap
	126	Aparowya I		287	Obako
	127	Aparowya II		282	Bangalca
	114	Atede		263	Apwor kla
	89	Acutoner		258	Alili
	123	Oral		260	Tesokano
	110	Adak		290	Pager
	163	Abaklwang		286	Dare north
	154	opyel Central		289	Dugolwano
	145	Tofi East		285	Lela awoki
	146	Agweng		278	Lali
	150	Kotonor east		264	Arin
	151	Amin Ogwal			
	156	Oyal Oryoneko			
	152	Orango Orngom			
	167	Wii Atop			
	155	Te Vwao			
	158	Owio			
	166	Aleb Tong			
	173	Lela Kabala			
	148	Lapyen			
	144	Subi County HC			
	159	Aranga			
	172	Acam Roma			
	141	Intage			
	170	Laming Onen			
	171	Lakwa A			
	178	Labedongony			
	179	Te Okaw			
	176	Tong Win South			

◇			
◇			
◇			
◇			
◇			
No:	Date:	Approved:	Revision:

Project:
THE PROJECT FOR PROVISION OF IMPROVED WATER SOURCE FOR RETURNED IDP IN ACHOLI SUB-REGION IN REPUBLIC OF UGANDA

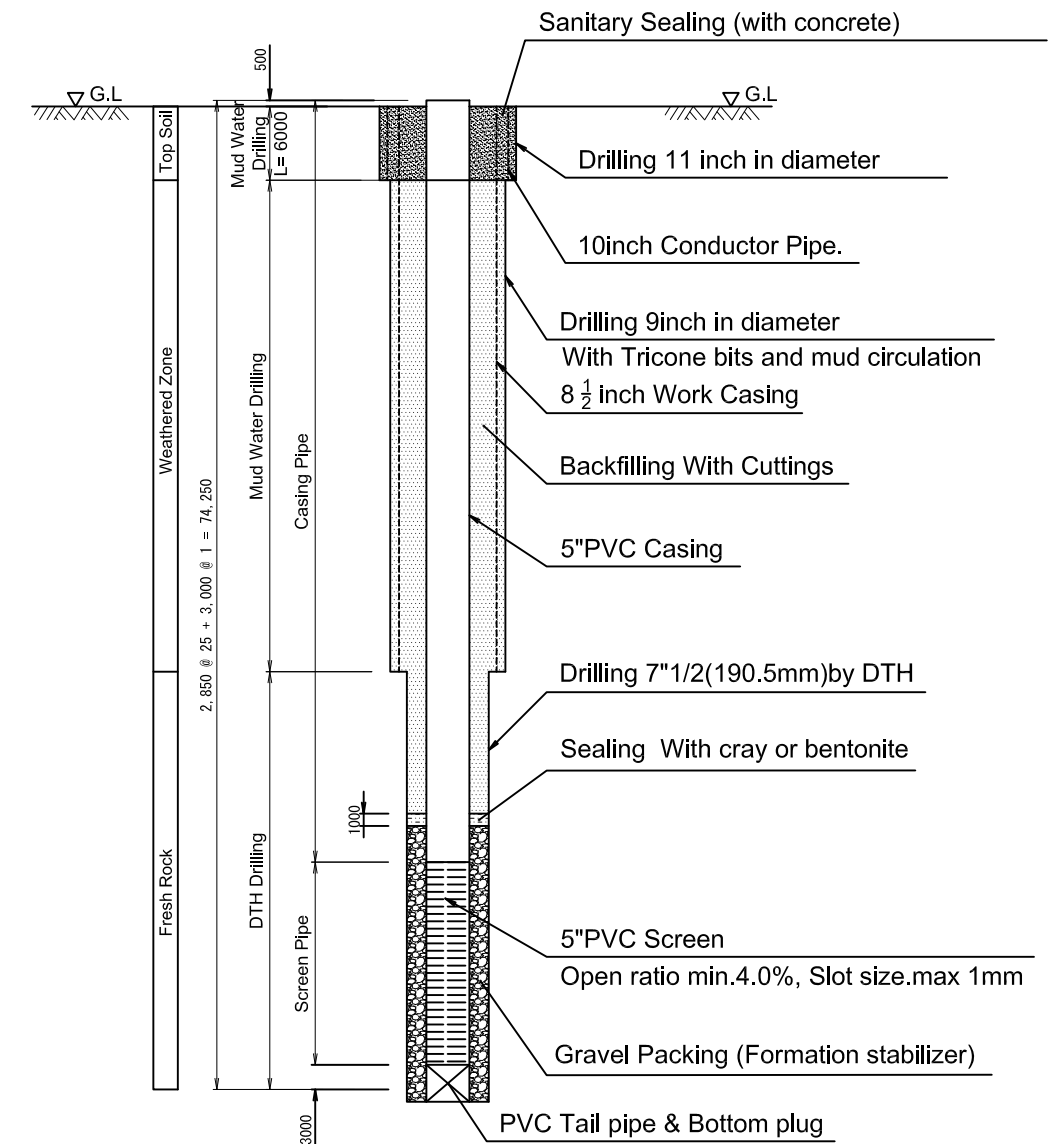
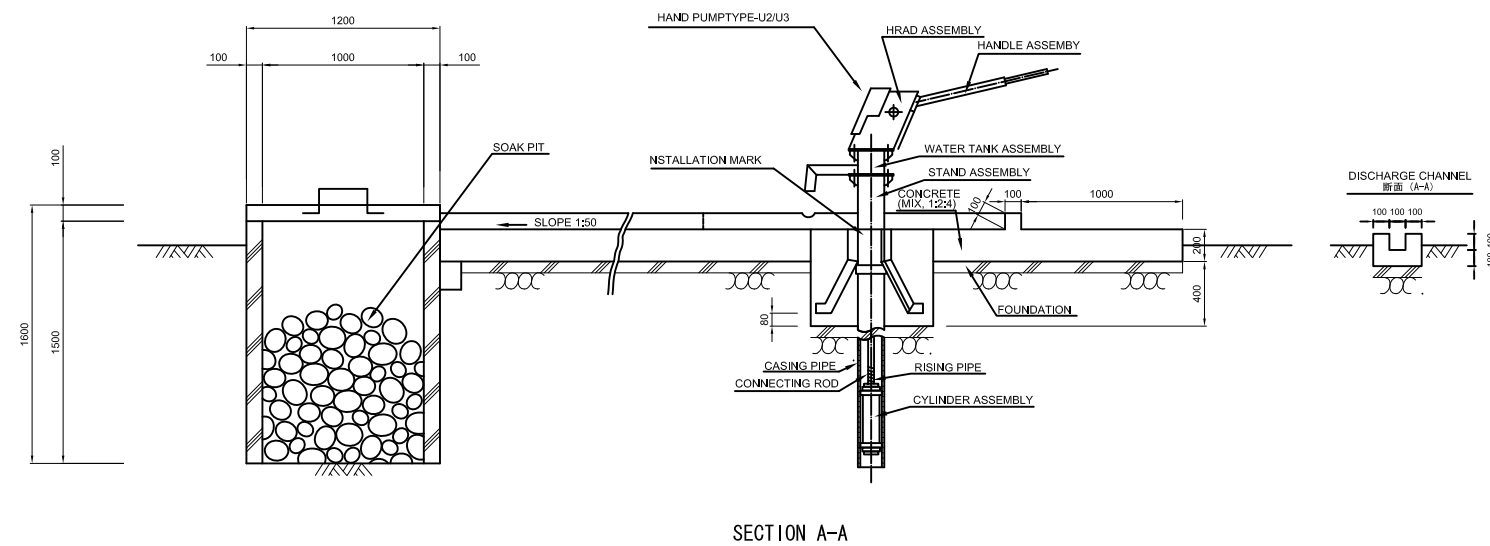
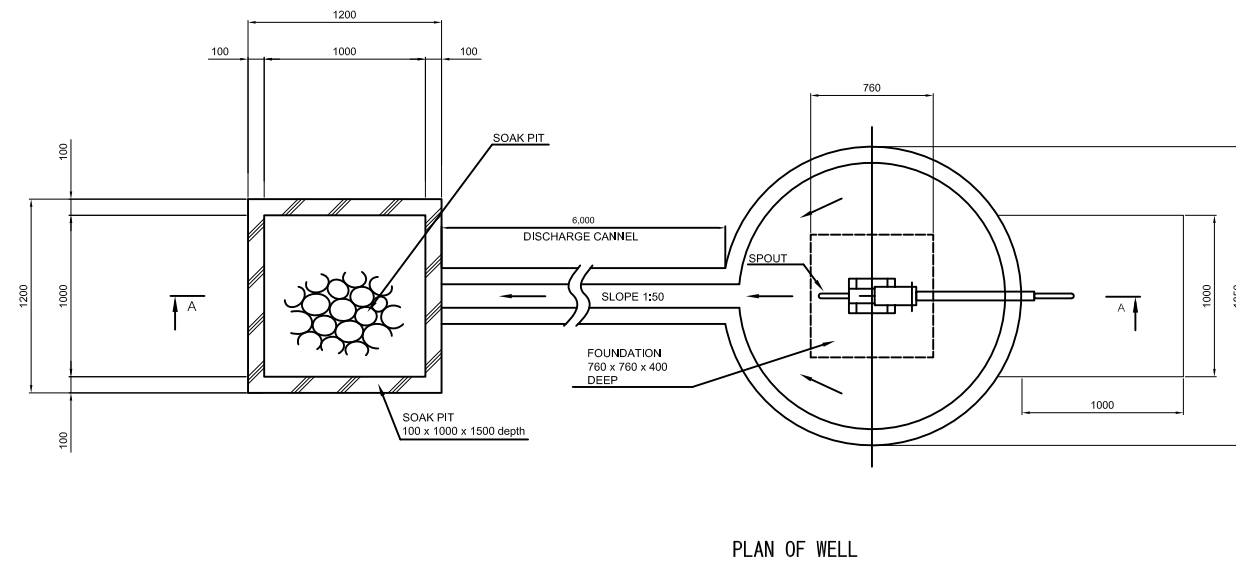
JICA
 JAPAN INTERNATIONAL COOPERATION AGENCY (JICA)
 TOKYO ENGINEERING CONSULTANTS CO., LTD.
 IN ASSOCIATION WITH
 OYO INTERNATIONAL CORPORATION

一般図
 対象村落・RGC位置図

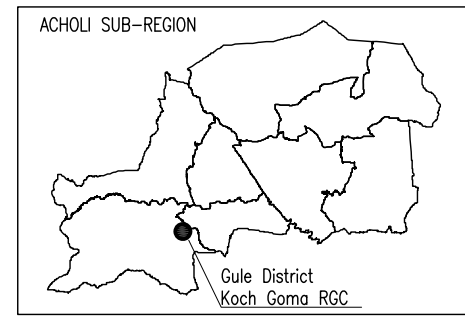
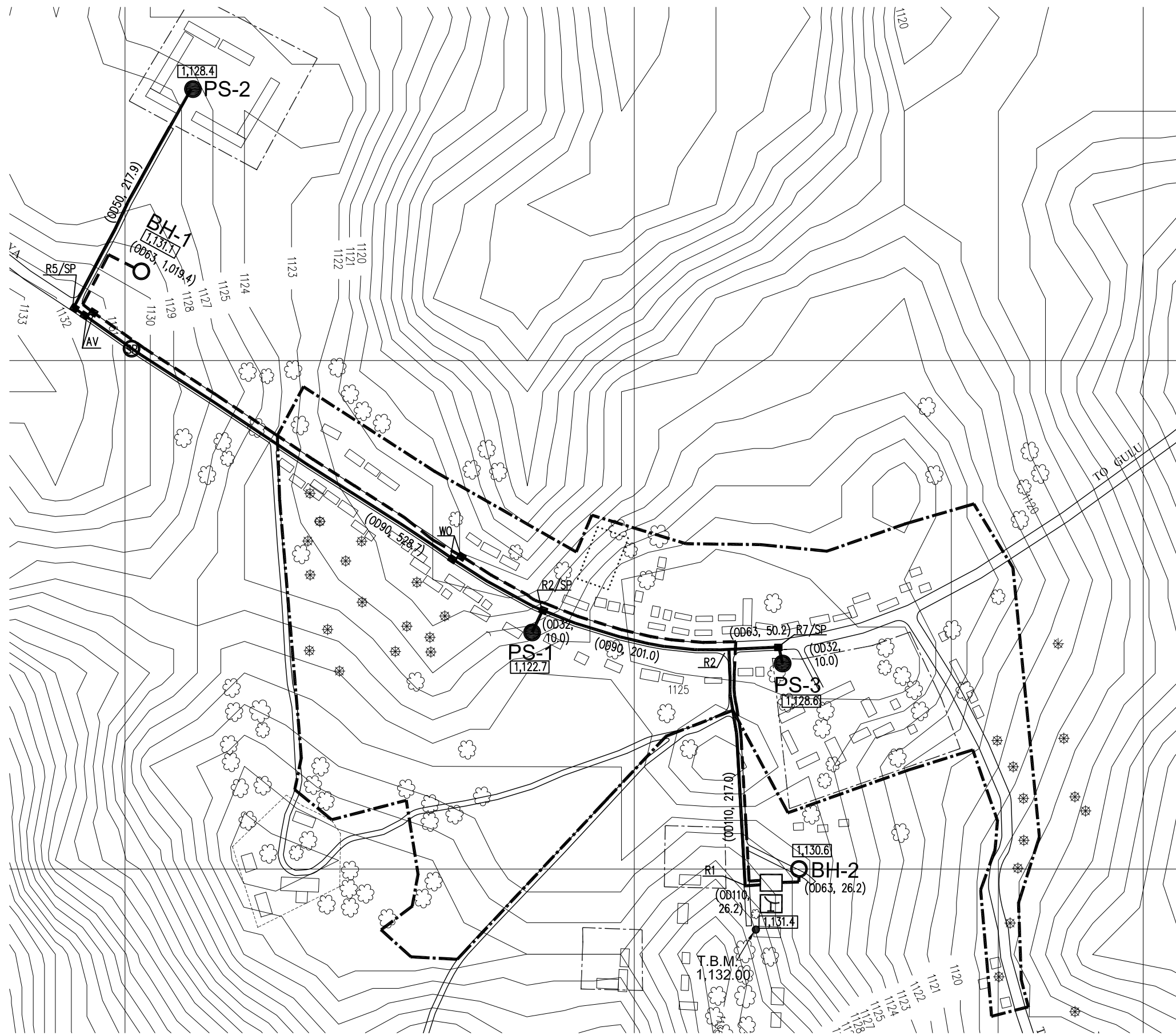
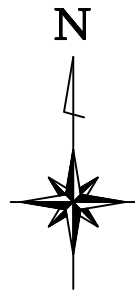
Date:
 No:
 Ref:

Typical Construction Drawing of Deep Well

Construction Drawing of Superstructure (Installation of Hand Pump)



◇				Project:	 JAPAN INTERNATIONAL COOPERATION AGENCY (JICA) TOKYO ENGINEERING CONSULTANTS CO., LTD. IN ASSOCIATION WITH OYO INTERNATIONAL CORPORATION	ハンドポンプ付深井戸施設 深井戸標準構造図及び 上部工構造 (ハンドポンプ据付図)	Date:		
◇				THE PROJECT FOR PROVISION OF IMPROVED WATER SOURCE FOR RETURNED IDP IN ACHOLI SUB-REGION IN REPUBLIC OF UGANDA					
◇									
◇									
◇									
No:	Date:	Approved:	Revision:				No:	Ref:	



SUMMARY OF QUANTITIES

ITEM	DESCRIPTION	Q'TY
1.	Target Population in 2017	2,100 (900 served)
2.	Transmission Pipeline	1,045.6
3.	Distribution Pipeline	1,261.0
4.	Water Source Borehole	2 No.s
5.	Public Stand	3 No.s
6.	Elevated Tank	1 No.
7.	Yard for Solar Modules	1 No.
8.	Air Valve and Wash Out Chambers on Transmission Pipeline	2 No.s
9.	Air Valve, Wash Out and Service Pipe Chambers on Distribution Pipeline	5 No.s

LEGEND

●	Public Water Stand.
○	Existing Water Source; Borehole.
☐	Solar Module.
□	Elevated Tank.
—	Distribution Pipeline.
- - -	Transmission Pipeline.
---	Electric Power Line
AV	Air Valve Chambers
WO	Wash Out Chambers
SP	Service Pipe Chambers
---	Education Center.
---	Health Center.
- - -	RGC Core Area.

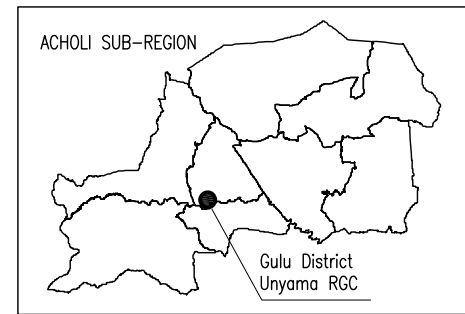
◇			
◇			
◇			
◇			
◇			
No:	Date:	Approved:	Revision:

Project:
THE PROJECT FOR PROVISION OF IMPROVED WATER SOURCE FOR RETURNED IDP IN ACHOLI SUB-REGION IN REPUBLIC OF UGANDA

JICA
 JAPAN INTERNATIONAL COOPERATION AGENCY (JICA)
 TOKYO ENGINEERING CONSULTANTS CO., LTD.
 IN ASSOCIATION WITH
 OYO INTERNATIONAL CORPORATION

管路給水施設
 Title:
施設配置計画図(コチゴマ RGC)

Date:
 No:
 Ref:
 ◇



SUMMARY OF QUANTITIES

ITEM	DESCRIPTION	Q'TY
1.	Target Population in 2017	3,600
2.	Transmission Pipeline	1,643.6
3.	Distribution Pipeline	1,664.7
4.	Water Source Borehole	2 No.s
5.	Public Stand	13 No.s
6.	Elevated Tank	1 No.
7.	Yard for Solar Modules	1 No.
8.	Air Valve and Wash Out Chambers on Transmission Pipeline	0 No.
9.	Air Valve, Wash Out and Service Pipe Chambers on Distribution Pipeline	20 No.s

LEGEND

	Public Water Stand.
	Existing Water Source; Borehole.
	Solar Module.
	Elevated Tank.
	Distribution Pipeline.
	Transmission Pipeline.
	Electric Power Line
	Air Valve Chambers
	Wash Out Chambers
	Service Pipe Chambers
	Education Center.
	Health Center.
	RGC Core Area.

<>			
<>			
<>			
<>			
No:	Date:	Approved:	Revision:

Project:
THE PROJECT FOR PROVISION OF IMPROVED WATER SOURCE FOR RETURNED IDP IN ACHOLI SUB-REGION IN REPUBLIC OF UGANDA

JICA
 JAPAN INTERNATIONAL COOPERATION AGENCY (JICA)
 TOKYO ENGINEERING CONSULTANTS CO., LTD.
 IN ASSOCIATION WITH
 OYO INTERNATIONAL CORPORATION

管路給水施設
 Title:
施設配置計画図(ウニヤマ RGC)

Date:
 No:
 Ref:
 <>