





Welcome

Dr Naoki Umemiya, Deputy Director, JICA
and
Delegation from JICA, MEXT and ASIASEED

Tuesday, 21 February 2012


1


Presented by Prof Alex Kot

About NTU


Yunnan Garden Campus




200 Hectares




**1.1 Mil m²
Build-up Space**



**400,000 m²
Academic Space**




NTU's lush 200-hectare campus was the Youth Olympic Village of the world's first Youth Olympic Games in 2010

3 


About NTU

Total Student Population




33,500
From more than
70 countries


>



**Undergraduates
2/3**




**Graduate
Students
1/3**

4 

About NTU

Staff Strength



5,600
Total

>

3,700
Faculty & Research Staff


From more than 70 countries,
with about 800 international
faculty
(including visiting faculty)

65% of faculty population

5 

About NTU


Alumni Strength



156,000
Total

>

Alumni in
105 countries

6 

About NTU

Alumni Strength

156,000
Total

36 overseas countries

- China
- India
- Indonesia
- Thailand
- Vietnam
- The United Kingdom
- The United States

7

About NTU

Residential Campus

16 Halls
Housing 9,200 undergraduates

8

About NTU

Residential Campus

1 Graduate Hall & Other Accommodation
Housing 600 Graduate students

9

About NTU

Residential Campus

Future:
25 more halls depending on demand

10

About NTU

Career Head Start for 2011 Graduates

2 in 3 graduates
hired before graduation

11

About NTU

A Fast-rising University


Ranked 50th

- In QS World University Rankings 2011
- Jumped 16 places over 2010
- One of the world's fastest-rising and Asia's fastest


12

About NTU

A Fast-rising University




Rated 5-stars
under a new QS Stars rating system

13 


About NTU

A Fast-rising University



NTU joins an international league of similarly acclaimed universities such as:

- Cambridge
- Stanford
- Massachusetts Institute of Technology

14 

About NTU

A Fast-rising University


Student Enrolment

Patents

Competitive Research Grants


S\$58.0m S\$348.0m*

Faculty, researchers & publications

15 


About NTU

A Fast-rising University




Student Enrolment

2005	26,000
2011	33,500

16 


About NTU

A Fast-rising University




Undergraduate Enrolment

2005	18,400
2011	23,500

17 


About NTU

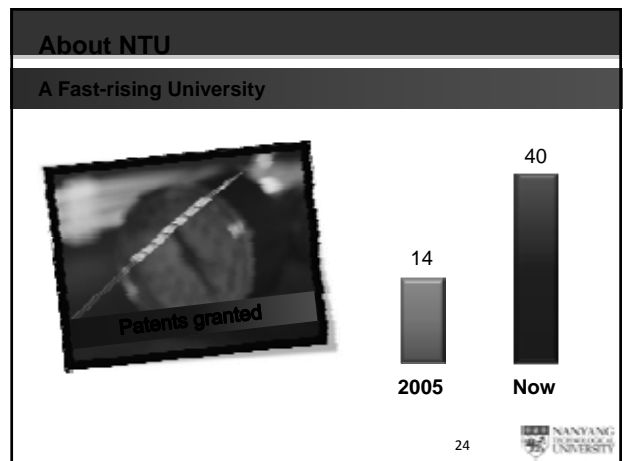
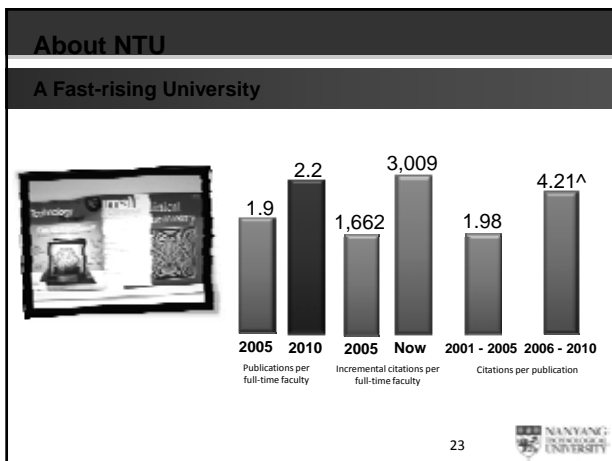
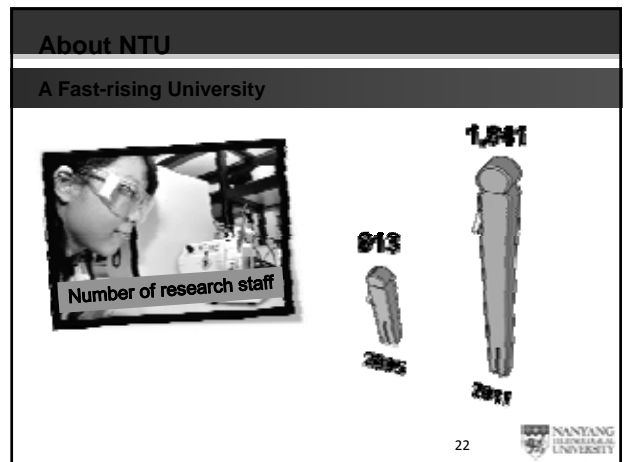
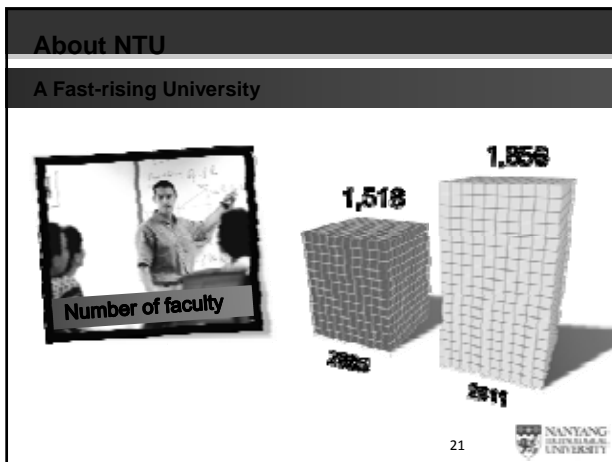
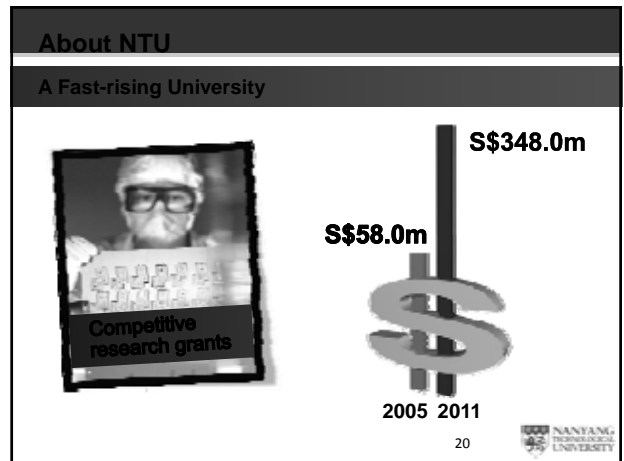
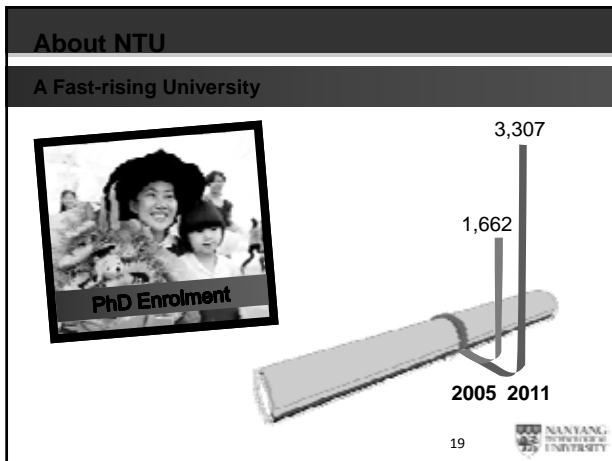
A Fast-rising University



Proportion Of A-level Intake With 3As

2005	11.4%
2010	22.8%

18 



About NTU

A Fast-rising University

- World's biggest Engineering college
- Research-intensive and interdisciplinary

25

NANYANG TECHNOLOGICAL UNIVERSITY

About NTU

College of Engineering – Facts & Figures

NTU:	Faculty:	1,377	
	Undergraduate:	21,861	} 29,879
	Graduate students:	8,018	
Engineering:	Faculty:	654	(47%)
	Undergraduate:	10,645	(49%)
	Graduate students:	3,648	(45%)

Source: Official Student Statistics
Undergrad and Grad figures as at AY11/12 including National Institute of Education students
Engg Grad figures include Grad Dip students and SMA programme
Source: CHR
Faculty figures (Full time faculty) as at 1 Jul 11

26

NANYANG TECHNOLOGICAL UNIVERSITY

About NTU

College of Engineering – Research Manpower

NTU:	Research Fellows:	730	} 1,671
	Research Associates:	324	
	Project Officers:	617	
	Masters and Ph.D:	3,285	
Engineering:	Research Fellows:	378	} 941 (56%)
	Research Associates:	210	
	Project Officers:	353	
	MEng and Ph.D:	2,343 (71%)	

Source: CHR as at 1 Jul 11
Source: Official Student Statistics
MEng and Ph.D from official student statistics AY11/12 including National Institute of Education students but including PhD from SMA programme

27

NANYANG TECHNOLOGICAL UNIVERSITY

About NTU

College of Engineering – Our Schools

School	No. of Divisions	No. of Faculty	No. of Research Staff	No. of Graduate Students	No. of Undergraduates
Chemical & Biomedical Engineering	2	49	92	214	1,096
Civil & Environmental Engineering	3	78	137	566	1,122
Computer Engineering	4	109	150	608	1,590
Electrical & Electronic Engineering	6	203	250	1,188	3,128
Materials Science & Engineering	2	59	176	317	989
Mechanical & Aerospace Engineering	6	154	136	755	2,720
Total	23	654	941	3,648	10,645

Source: CHR
No. of faculty includes FT & PT as at 1 Jul 11
No. of Research and Research Fellows, Research Associates and Project Officers as at 1 Jul 11
Total No. of Faculty as at 654 (2 faculty from Dean's Office)

Source: OAS
Undergraduates & Graduates enrolment from official student statistics AY11/12
Undergraduates includes 1st year common engg students, includes PT students in MAE & EEE
Graduates include Grad Dip, include SMA

28

NANYANG TECHNOLOGICAL UNIVERSITY

About NTU

College of Engineering – Graduate Programmes

Civil & Environmental Engineering

- M.Eng & Ph.D. (By Research)
- NEWRI Environmental Master of Science (NEMS)
- Dual Master Degree (offered by National Taiwan University)
- M.Sc. (Civil Engineering)
- M.Sc. (Environmental Engineering)
- M.Sc. (Environmental Science & Engineering)
- M.Sc. (International Construction Management)
- M.Sc. (Maritime Studies)
- Graduate Dip. in Construction Management

Computer Engineering

- M.Eng & Ph.D. (By Research)
- M.Sc. (Bioinformatics)
- M.Sc. (Digital Media Technology)
- M.Sc. (Embedded Systems)
- M.Sc. (Information Systems) in collaboration with Wee Kim Wee School of Communication and Information

29

NANYANG TECHNOLOGICAL UNIVERSITY

About NTU

College of Engineering – Graduate Programmes

Electrical & Electronic Engineering

- M.Eng & Ph.D. (By Research)
- M.Sc. (Communication Software & Networks)
- M.Sc. (Communications Engineering)
- M.Sc. (Computer Control & Automation)
- M.Sc. (Electronics)
- M.Sc. (Power Engineering)
- M.Sc. (Signal Processing)
- NTU-*TUM Joint M.Sc. (Integrated Circuit Design)
- NTU-*TUM Joint M.Sc. (Microelectronics)
- Graduate Diploma in Information-Communication Technology

*TUM – Technische Universität München

30

NANYANG TECHNOLOGICAL UNIVERSITY

About NTU

College of Engineering – Graduate Programmes

Mechanical & Aerospace Engineering

- M.Eng & Ph.D. (By Research)
- MSc (Innovation in Manufacturing Systems and Technology)
- M.Sc. (Aerospace Engineering) with Technische Universität München (TUM)
- M.Sc. (Logistics)
- M.Sc. (Mechanical Engineering) with Naval Architecture & Marine Engineering (NAME) Specialisation
- M.Sc. (Precision Engineering)
- M.Sc. (Smart Product Design) with Human Factors Engineering (HFE) Specialisation
- M.Sc. (Systems and Project Management) and Dual Masters Programme (DMP)
- M.Sc. (Project Management) in partnership with The University of Manchester (UoM), UK.



31



About NTU

College of Engineering – Graduate Programmes

Chemical & Biomedical Engineering

- M.Sc. (Biomedical Engineering)
- M.Eng & Ph.D. (By Research)
- NTU-Imperial College Joint PhD Degree (Bioengineering and Chemical and Biomolecular Engineering)



Materials Science & Engineering

- M.Eng & Ph.D. (By Research)
 - Biomaterials
 - Defence Materials
 - Nano-Electronics & Interconnects
 - Rare Earth Nano-Materials
 - Organic / Polymer Electronics
 - Ecomaterials
 - Computational Materials Science



32



About NTU

College of Engineering – Graduate Programmes

Dual & Joint Ph.D. Degree Programme with Overseas Universities

- NTU - Carnegie Mellon University Dual Ph.D.
- NTU - Columbia University Dual Ph.D.
- NTU - Imperial College London Joint Ph.D.
- NTU - Technion-Israel Institute of Technology Joint Ph.D.
- NTU - Technische Universität München Joint Ph.D.
- NTU - Université de Technologie de Troyes Joint Ph.D.
- NTU - University of Southampton Joint Ph.D.
- NTU - Darmstadt University of Technology Joint Ph.D.
- NTU - Graz University of Technology Joint Ph.D.
- NTU - Hebrew University of Jerusalem Joint Ph.D.



33



Research Student Scholarship (RSS) to do PhD in NTU

ELIGIBILITY

- Open to local and international students who are pursuing a full-time Ph.D. in NTU
- Graduates with a passion for research and excellent academic results
- Have a First Class or Second Upper Division Honours degree or equivalent
- Good and valid GRE score
- Good and valid TOEFL scores and able to communicate in English
- Good reports from academic referees

Monthly stipend for overseas candidates:
Before QE (first 12 -18 months) – S\$2000/month
After QE – S\$2500/month



34



Career advancement by our alumni

Dr Ling Cong

Lecturer
Communications and Signal Processing Group,
Department of Electrical and Electronic
Engineering,
Imperial College London

PhD Alumni 2005, EEE, NTU



Dr Alexis Frank

Assistant Professor, Bioengineering
Clemson University

PhD Alumni 2005, MSE, NTU



35



Career advancement by our alumni

Dr Adrian Yeo Piah Song

General Manager
Membrane Instruments and Technology Pte Ltd

PhD Alumni, 2007, CEE, NTU



Prof. Susanto Rahardja

Deputy Executive Director, Research
Institute for Infocomm Research (I²R)
Fellow of IEEE

PhD Alumni, 1997, EEE, NTU



36



Singapore's Demographic Profile



Source: The Straits Times, Thursday, January 13 2011

37



Estimated cost of living in Singapore

Items	Per Student Per Month (US\$)
Food - University Canteens - Meals outside Campus	200 - 250 250 - 350
Accommodation - rental of a hostel room / room outside campus	290 - 450
Transport Expenses (local)	75 - 100
Other Expenses (stationery, toiletries, laundry, recreation, etc)	200 - 300
Total Estimated Cost of Living	815 - 1,200

38



Thank You

39



Welcome to The SIM Group
22 February 2012



www.sim.edu.sg

SIM Social Mission



Society founded in 1964 (by EDB) on a clear purpose to train layers of management for the nation.

Providing opportunities and alternative pathways for each and every generation in our community seeking to learn, improve and participate in our workforce.



Page 2

www.sim.edu.sg

How we are organised



Parent Society



- Membership and library (print & electronic) services
- Supports Special Interest Groups (12)
- Publication of newsletters, magazines and management journals
- Affiliation with Asian Association of Management Organisations

Education Brands:



Local Qualifications

- Offers academic programmes targeted at working adults
- Four Schools - Arts & Social Sciences, Business, Human Development & Social Services, and Science & Technology



Overseas Qualifications

- Manage partnerships with leading institutions from around the world
- Offers full-time and part-time academic programmes spanning management, ICT, health sciences, hospitality etc



Corporate & Professional

- Provides executive education in management, leadership and functional areas
- Organise customised programmes to support executive development needs of clients with regional deployment capabilities

Page 3

www.sim.edu.sg

SIM Campuses



SIM Headquarters at Clementi Road



SIM University at Clementi Road



SIM Management House at Namly Avenue



SIM Global Education Campus @ Ulu Pandan

Page 4

www.sim.edu.sg

Campus of the Future



- **\$300m** campus development master plan to double current size at HQ
- **Phase 1: Ready in March 2011**
– six-storey building adjacent to the existing campus
- **Phase 2: Ready by 2013**

Page 5

www.sim.edu.sg

SIM Global Education



- More than 20 years' experience in global education
- Offers high quality academic programmes through partnerships with more than 13 established international universities and institutions.
- More than 74 academic programmes at postgraduate, undergraduate, diploma and certificate levels.
- Forms the biggest part of the SIM ecosystem with enrolment of more than 21,500 students.



Page 6

www.sim.edu.sg

Reputable Partners



Two Keys to Academic Quality

Academic quality assurance of
Partner Universities
+
SIM University's
independent audit

Academic Excellence - University of London

From 56 to 92 to 117 First Class Honours



Academic Excellence - University at Buffalo

From 56 to 115 to 209
Latin Honors



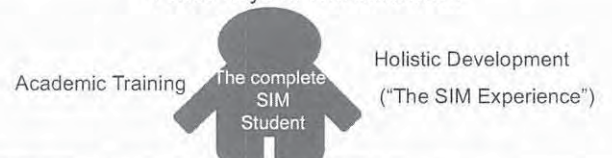
Academic Excellence -
Royal Melbourne Institute of Technology

From 276 to 315 Distinctions



Holistic Education Development

Focus Beyond The Classroom




SIM PL+US. Beyond the Classroom (6 track journey)




SIM Global Education

Sports Cluster's Achievements



SIM Dragon Boat (Dragon Boat Festival-Tertiary Men, Tertiary Women and Tertiary Mixed-Gold)





SIM Swimming & Lifesaving

(SUniG 2011-1 Gold, 2 Silver, 3 Bronze)


www.sim.edu.sg

SIM Global Education


SIM Floorball (IVP 2010/2011- Gold & Inter-Uni Champion)

SIM Touch Football (IVP 2010/2011-Silver & SUniG 2011-Bronze & Asian Club Championship-Gold)




SIM Table Tennis (IVP 2010/2011-Bronze & SUniG-Silver)




www.sim.edu.sg

SIM Global Education


Arts, Special Interests, International Student Clubs' Achievements



SIM CCA Awards Night 2011



SIM CCA Leadership Summit 2011




SIM VNC Music Revolution 2011


www.sim.edu.sg

SIM Global Education


SIM Dancesport - Stars of Tomorrow Championships




SIM String Ensemble "SIMphony no.1 Ancora!"



SIM Incandescence - Chingay 2011




inSIM Musical Drama "Once Upon a Time"




www.sim.edu.sg

SIM Global Education


SIM Economics Society - Economics Week 2011



SIM YEN - KT&G Asian Students' Venture Forum 2011 Business Plan Competition



SIM IT Club - IT Week 2011




www.sim.edu.sg

SIM Global Education

SIM GE Campus @ Ulu Pandan

- Designed to provide GE students with a holistic campus life
 - 4.5ha of accommodation and activity spaces
- Combined with the current SIM campuses, SIM now has the biggest and most comprehensive campus for a private tertiary institution in Singapore




Hostels, recreation facilities at new SIM campus

SIM Global Education's new campus at Ulu Pandan will boast hostel-based and recreational facilities not available elsewhere in local universities here.

It has 200 hostel rooms, over 400 beds, a dining centre, a sports and tennis courts. Students will have to pay between \$150 and \$200 monthly for hostel, depending on the type of room they opt for.

At the launch yesterday, SIM said it will also be offering \$200,000 in scholarships a year for its students. Up to 30 scholarships will be given to students with exemplary academic records or achievements in the sports and arts, and also for those who intend to go abroad for their degree programmes.

By Karen Wong



www.sim.edu.sg

Singapore Education Award 2008 & 2009



Best International Marketing Effort by a Private Educational Institution - Effective promoting of both SIM and Singapore as an attractive educational destination, and marketing with integrity

Voted #1 Private School 2008, 2009 & 2010

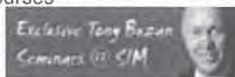


SIM was voted by AsiaOne.com readers as the Top Private School in Singapore in "AsiaOne People's Choice Awards" for 3 consecutive years

SIM Professional Development

Executive Seminars

- Annually runs close to 800 executive seminars and workshops for more than 14,000 executives
- Examples of seminars include:
 - Tony Buzan seminar series
 - JOCE Forum: Creative Leadership for CEOs
 - Good Thinking! How to Get More of it in your Organisation
 - Creativity and Innovation
 - Leadership courses
 - Business and Financial Management courses
 - Communication and Presentation Skills



SIM Professional Development

Functional Areas of Executive Seminars

- Senior Management
- General Management
- Accounting & Finance
- Business Law
- Communication Skills
- Creativity & Innovation
- Customer Care & Relationship Management
- HR Management & Development
- IT & Management
- Manufacturing & Operations
- Negotiation Skills
- Finance & Investment
- Public Relations
- Corporate Governance
- Entrepreneurship
- Leadership
- Knowledge Management
- Project Management
- Quality Management
- Real Estate Management
- Retail & Merchandising
- Sales & Marketing
- Team Leadership & Interpersonal Skills



SIM Professional Development

HumanResources

Distinguished HR Vendor of the Year 2008 Award (3rd year running)



- Overall Winner, Preferred Corporate Training Vendor of the Year
- Winner for the following sectors:
 - Financial Services
 - IT & Telecommunications

Membership Services

- Membership base of more than 27,000 corporations and individuals
- Annual Management Lecture (Michael Porter, Charles Handy, Howard Gardner, Tom Kelley, etc)
- Special Interest Groups (12), Talks and Lectures, Annual Open House
- Library resources (management publications & research)
- National Management Competition
- Affiliation with Asian Association of Management Organisations (AAMO)



SIM Interest Groups



Business Management Group



China Interest Group

HuRIG

Human Resource Interest Group



Strategic Management Group



SIM I Toastmasters
SIM II Toastmasters
Mandarin
Toastmasters



The Entrepreneurs Group



Innovation & Quality Management Group



Information Technology Group



Organisation Development Group



Marketing Executives Group

- Platform for practitioners to share experiences in their specialised fields.
- Each run by a voluntary executive committee with administrative support from SIM.



End of Presentation. Thank You! >>>

Members of The SIM Group



資料 9 インドネシア現地調査での収集資料

1. バンドン工科大学に関する Power Point



Managing Partnership and Research Activities: *Case of Institut Teknologi Bandung*

HISTORY & FUTURE		of ITB
FUTURE	ITB as Autonomous State University?	ITB as Research, Development and Innovation University: • <i>Academic excellence for education, contribution to knowledge, industrial relevance, and community services.</i>
2010 – 2012		Transition process from BHMN to PTN ?
2000 – 2010	INSTITUT TEKNOLOGI BANDUNG (ITB) AS LEGAL ENTITY (AUTONOMOUS/BHMN)	December 26, 2000, ITB embarked on new status of as legal entity (AUTONOMOUS) In 2009, Gov of Indonesia Launched UU BHP (UU no 9 tahun 2009). UU BHP was cancelled by Constitution Court, 31 March 2010
1959 – 1999	INSTITUT TEKNOLOGI BANDUNG (ITB) As State University/PTN	March 2, 1959, officially declared by Soekarno (the 1 st President of ROI) 1959, The first Rector of ITB was inaugurated 1973, Common Preparatory Level was opened 1979, The first Graduate Programs
1946 – 1959	Universitas Indonesia	June 21, 1946, officially declared by NICA 1946, Faculteit van Technische Wetenschap was established October 6, 1947, Faculteit van Exacte Wetenschap was established
1945 – 1946	Sekolah Tinggi Teknik (STT)	1945, opened 1946, moved to Yogyakarta & named as STT Bandung in Jogja 1946, became Faculty of Engineering, University of Gajah Mada (UGM)
1944 – 1945	Bandung Kogyo Daigaku (BKD)	April 1, 1944, TH was re-opened & named as BKD by the Japanese government
1920 – 1942	Technische Hogeschool (TH)	July 3, 1920, officially declared by the Dutch government July 1, 1924, the first graduates July 3, 1926, the first Indonesian graduates (among others, Ir. Soekarno, the 1 st President of ROI)

FACTS & FIGURES*)

of *ITB*

*) Februari 2011



Location: Bandung, capital of province of Western Java

Facilities

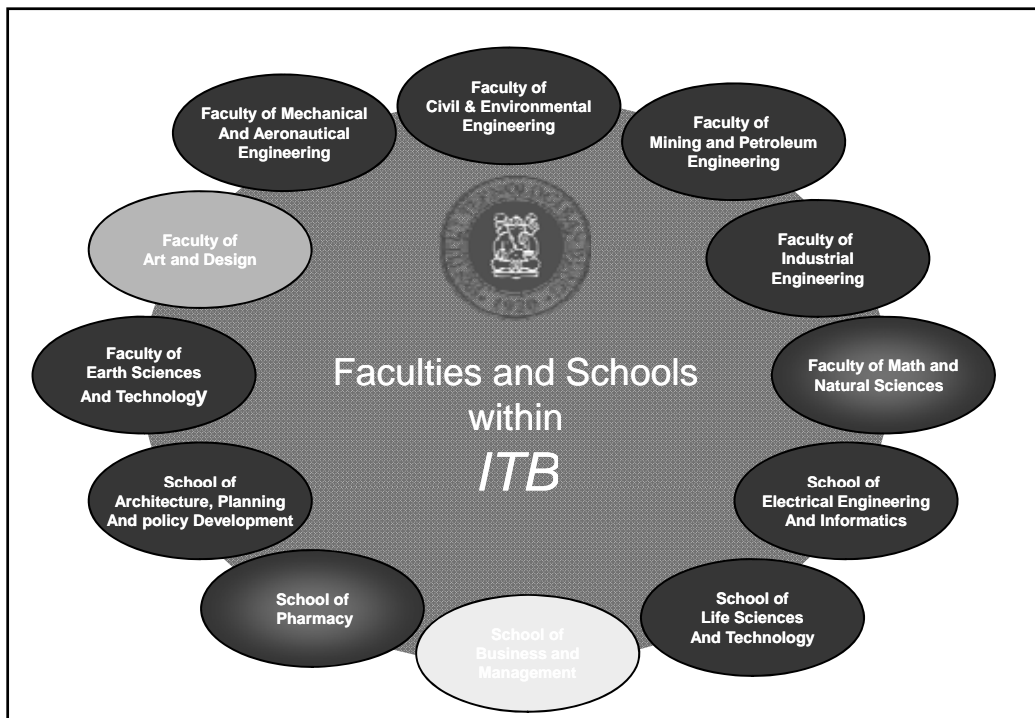
ITB CAMPUS	29 Ha
SPORT FACILITIES	4 Ha
BUILDING FLOOR PER STUDENT	18.5m ²

Students

STUDENT BODY	Under-graduate	13503
	Master	4275
	Doctor	626
ENROLLMENT	Undergraduate	3182
	Master	1894
	Doctor	201
GRADUATES	Under-graduate	3005
	Master	1582
	Doctor	85

Academic & Non Academic Staff

ACADEMIC STAFF		1022
EDUCATION	Bachelor	34
	Master	245
	Ph.D.	743
ACADEMIC RANK	Professor	119
	Assoc. Professor	288
	Assistant Professor	393
	Lecturer	222
FACULTY : STUDENT RATIO		1:18
NO OF ADMINISTRATIVE STAFF		1481
ADM. STAFF : STUDENT RATIO		1:12



RESEARCH CENTER

Sustainable Energy

**Environmental Management, Infrastructure, and Regional
Development**

Information Technology and Communication

Biotechnology

Fine Art and Design

Apart from 5 research centers above,
ITB has also some 32 centers in various field of expertise

Stages of ITB Transformation from a State University to an autonomous
university with strong focus on research

PRIOR TO DECEMBER 26, 2000

ITB was :

- A state-owned university (ITB PTN);
- Highly dependence on government, brought about ***conditions which were not in favor of good corporate governance.***

STARTED FROM DECEMBER 26, 2000 to MARCH 30, 2010

LEGAL ENTITY STATUS *of ITB* (ITB BHMN):

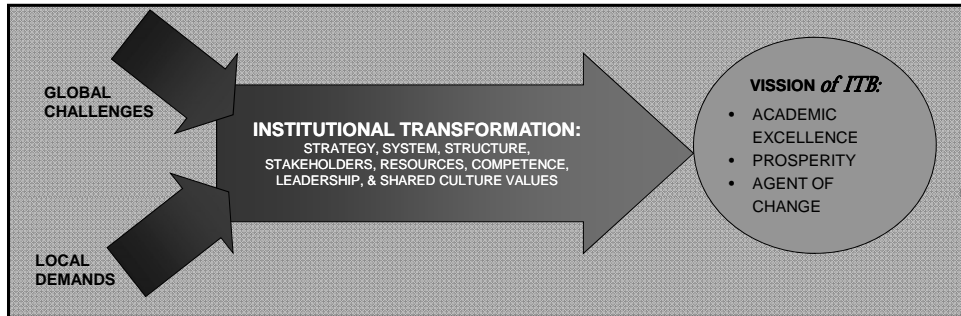
An opportunity to embark on institutional transformation towards good corporate governance.

THE OBJECTIVE OF INSTITUTIONAL TRANSFORMATION *of ITB*:

To establish an innovative and respected institution in higher education that can meet dynamic needs of people, and responsibly lead development in society, local, national and global.

FIRST PHASE of TRANSFORMATION
Dec 2000 to January 2005

of ITB



SECOND PHASE of TRANSFORMATION
Feb 2005 to January 2010

ITB as a Research
and Development university
(*Prosperity, Transparency and Accountability*)

VISSION of ITB

*Academic excellence for
education, contribution to
knowledge, industrial
relevance, and community
services*

**ITB BHMN-BHP, and
Transition to Autonomous State University
Feb 2010 to March 2010, and from March 2010**

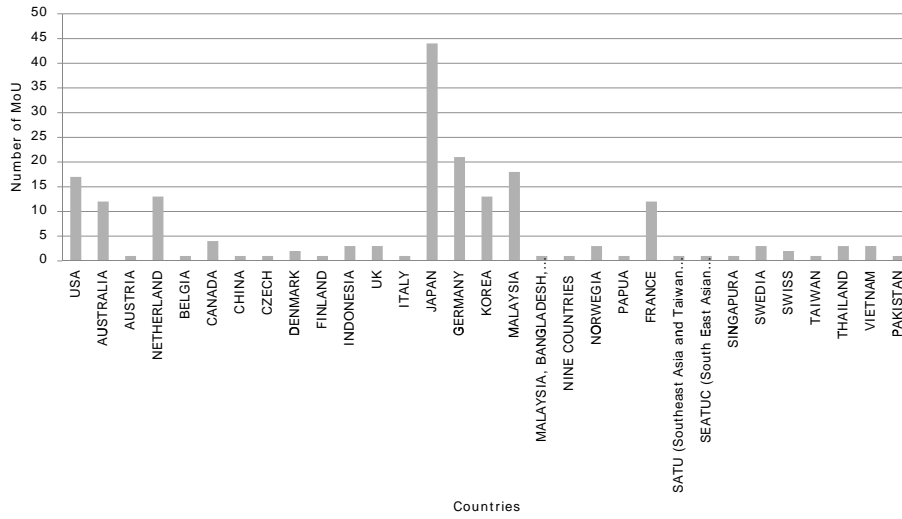
ITB as a Research
and Innovation university
(Challenging, Excellent, and Committed)

VISION of *ITB*

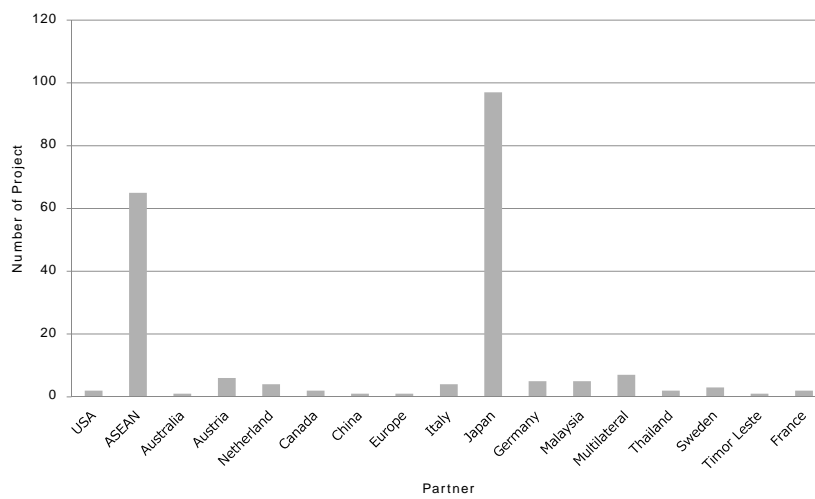
*Academic excellence for
education, contribution to
knowledge, industrial
relevance, and community
services*

Facts and Figure of ITB
Partnership and Research Activities

International MoU (Memorandum of Understanding)



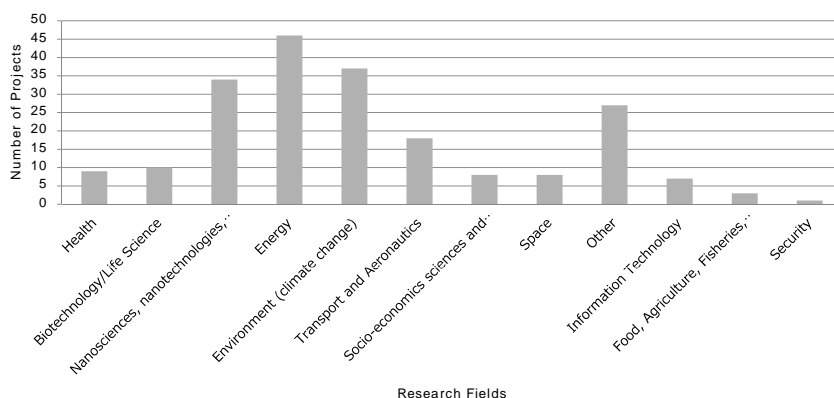
International Collaboration 2005-2009



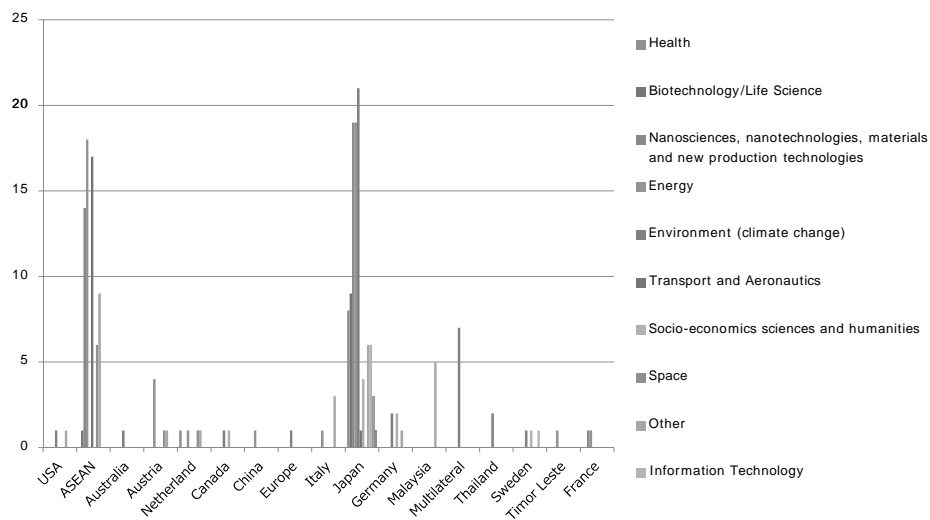
International Collaboration Project of 2009

International Partner Institution	Title of Project	Thematic Priorities	Estimated Funding
The Asahi Glass Foundation	The Asahi Glass Research Grant Program (starting June 2009, 2 years)	Materials Sciences, Life Sciences, Information Sciences and Automatic Control, Environment, and Energy.	82,000 US\$
Osaka Gas Foundation	Osaka Gas Foundation Research Grant Program (starting November 2008, 1 year)	1. Technologies concerned with natural gas 2. Global environmental problems	15,000 US\$
Kyoto University	Human Security Engineering in Asian Megacities	Geophysics Engineering	29,450 US\$
Indonesia Toray Science Foundation	Science and Technology Research Grant (starting February 2009, 1 year)	Science and Technology	14,250 US\$
International Development Research Center (IDRC)	Adaptive Behavior Assessment Based on Climate Change Event: Jakarta's Flood in 2007 (March 2009)	Climate Change	24,190 US\$
Deutsche Gesellschaft für Technische Zusammenarbeit (GTZ) GmbH	Patterns of Vulnerability in Coastal Zones in Indonesia (March, 2009)	Coastal Engineering	15,513 US\$

Research Fields of International S&T Cooperation 2005-2009



Research Fields of International S&T Cooperation 2005-2009



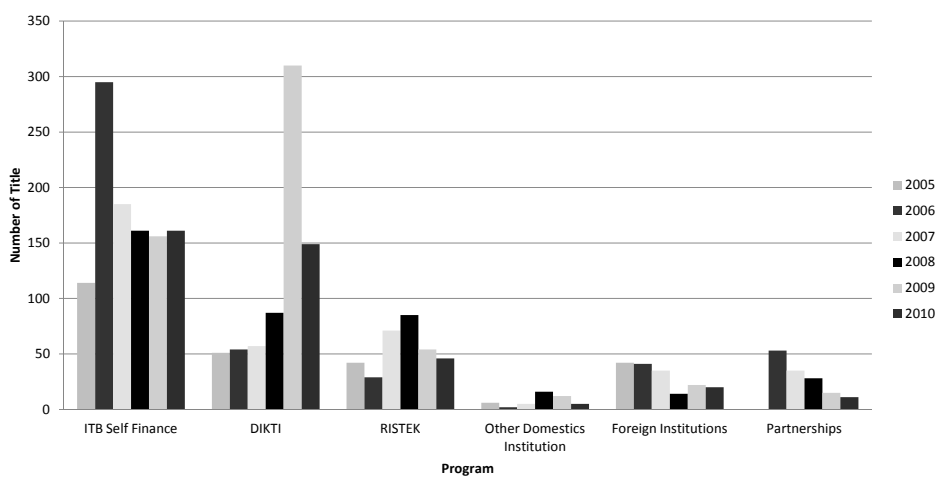
Finance of S&T Programmes 2005-2009 (in USD)

Country	Mode of Finance	2005	2006	2007	2008	2009
Amerika Serikat	Government Funding	10,930.75		20,605.50		
Amerika Serikat Total		10,930.75		20,605.50		
ASEAN	Government Funding	64,397.41	327,414.00	166,246.29	112,500.00	
	External Funding (Foundation)		18,677.00		63,903.22	
	Private Sector Funding			241,068.50		
ASEAN Total		64,397.41	346,091.00	407,314.79	176,403.22	
Australia	Government Funding		225,535.00			
Australia Total			225,535.00			
Cina	Private Sector Funding			2,617.50		
Cina Total				2,617.50		
EUROPE	Government Funding	183,228.43	83,403.10	90,034.00	47,380.84	66,234.07
	External Funding (Foundation)	7,800.00	144,355.20		33,365.61	74,928.08
	Private Sector Funding		154,000.00			
	Public-Private Partnership		3,000.00	2,640.00	24,253.54	19,747.42
EUROPE Total		191,028.43	384,758.30	92,674.00	104,999.99	160,909.58
Jepang	Government Funding			132,430.00		
	External Funding (Foundation)	48,842.00	75,119.13	77,956.52	144,230.64	127,881.08
	Private Sector Funding	35,305.58	120,668.75	35,000.00		
Jepang Total		84,147.58	195,787.88	245,386.52	144,230.64	127,881.08
Other	Government Funding		484,430.00	65,110.00		
	External Funding (Foundation)		198,875.00	92,358.00	22,726.30	23,172.99
Other Total			683,305.00	157,468.00	22,726.30	23,172.99

Funding from Multilateral Organizations and Donors (in USD)

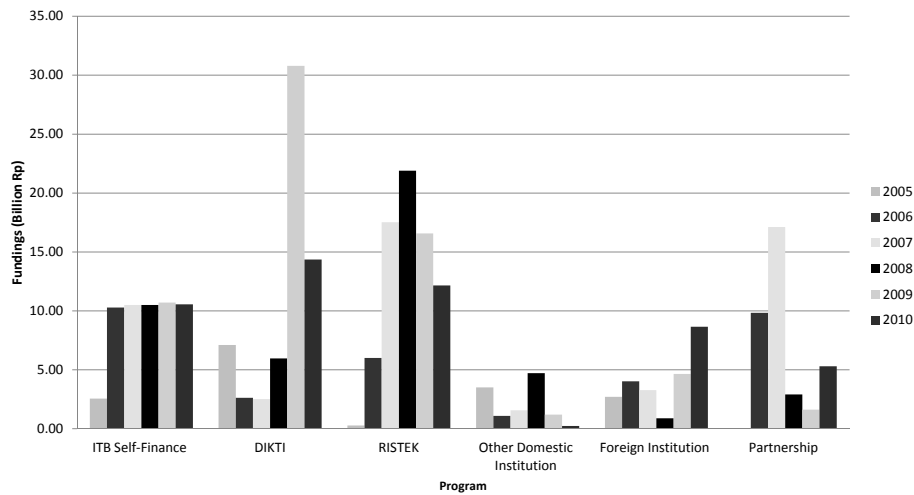
Partner	2006	2007	2008
Care International Indonesia	198,875.00	92,358.00	8,172.90
Programme United Nations Development (UNDP)	399,620.00		
United Nations Environment Programme (UNEP)	84,810.00		
Total	683,305.00	92,358.00	8,172.90

Research Topics 2005-2010*)



*) by August 2010

Research Funding 2005-2010*)



*) by August 2010

Research Projects and Funding 2005-2010 *)

Source of Funding	2006		2007		2008		2009		2010	
	Topics	Funding (Billion Rp)	Topics	Funding (Billion Rp)	Topics	Funding (Billion Rp)	Topics	Funding (Billion Rp)	Topics	Funding (Billion Rp)
ITB Self-Finance	295	10.28	185	10.5	161	10.5	156	10.5	149	14,36
DIKTI	54	2.63	57	2.52	87	5.96	310	30.79	46	12,16
RISTEK	29	6.01	71	17.53	85	21.9	54	16.57	5	0,24
Other Domestic Institution	2	1.09	5	1.56	3	3.72	2	0.20	20	8,65
Foreign Institution	41	4.03	35	3.28	14	0.88	22	4.65	161	10,55
Partnership	53	9.83	35	17.11	28	2.91	15	1.62	11	5,31
Total	421	24.04	353	35.39	350	42.96	559	64.54	392	51,26

*) by August 2010

On-going Double/Joint Degree

INSTITUT TEKNOLOGI BANDUNG						LUAR NEGERI		Program Kerjasama	Jmlah Peserta Aktif	Jumlah Lulusan
No.	Fakultas/Sekolah/Program Studi	Topik/Bidang	Jenjang	Status	Tahun mulai	University/Faculty/Department/Country	Agreement			
I Fakultas Matematika dan Ilmu Pengatahan Alam (FMIPA)										
1	Aktuaria	Actuaria	S2	Sudah berjalan	2001	Rijksuniversiteit Groningen/The Netherlands		Double degree		
2	Kimia	Chemistry & Material Sciences	S2	Sudah berjalan	Januari 2009	University of Twente/Faculty of Science and Technology/The Netherlands	LoA tgl. 28 Oktober 2008	Double degree	3	
II Fakultas Teknologi Industri (FTI)										
1	Teknik Kimia	Teknik Kimia	S2	Sudah berjalan	2000/2001	Rijksuniversiteit Groningen/The Netherlands	MoA : Agustus/September 1998	Double degree	1	16
2	Instrumentasi dan Kontrol	-	S2	Sudah berjalan	2008/2009	Toyohashi University of Technology/Japan	Agreement Covering The Implementation: August/Sept 2007	Joint Degree		1
III Sekolah Arsitektur, Perencanaan dan Pengembangan Kebijakan (SAPPK)										
1	Perencanaan Wilayah dan Kota	-	S2	Sudah berjalan	2003	Royal University of Groningen/The Netherlands		Double degree	15	85
2	Perencanaan Wilayah dan Kota	-	S2	Sudah berjalan	2006	International Institute for Geo Information Science and Earth Observation/The Netherlands		Double degree	13	2
3	Perencanaan Wilayah dan Kota	Policy Analysis	S2	Sudah berjalan	2006	Kobe University; Keio University; Ritsumeikan University; Graduate Institute for Public Studies/Japan		Double degree	16	26
4	Perencanaan Wilayah dan Kota	-	S2	Sudah berjalan	2007	Yamaguchi University/Japan		Double degree		1

On-going Double/Joint Degree



IV Fakultas Teknik Pertambangan dan Teknik Perminyakan (FTTM)										
1	Geofisika Terapan	Petroleum Geosciences & Petroleum Geophysics	S2	Sudah berjalan	Sem II- 2007/2008	Universitas Kebangsaan Malaysia/Malaysia	MoU : 23 April 2007	Double Degree	12	
2	Rekayasa Pertambangan (ITB-UGM)	Pengelolaan Sumberdaya Bumi	S2	Sudah berjalan	Sem II- 2007/2008	Universitat Karlsruhe (TH)/Germany	MoU : 9/05/2008	Joint Degree	20	
3	Teknik Perminyakan	Petroleum Engineering	S2	Sudah berjalan	Sem I- 2008/2009	France Institute of Petroleum Postgraduate School/France	ITB-Total IFP: 30 Jan 2008	Double Degree	25	
V Sekolah Teknik Elektro dan Informatika (STEI)										
1	Teknik Elektro	Biomedical Engineering	S3	Sudah berjalan	2004	Rijksuniversiteit Groningen/The Netherlands		Double Degree		1
2	Teknik Elektro		S2	Sudah berjalan	2007/2008					
3	Teknik Elektro	Electrical Control Engineering	S2	Sudah berjalan	2002/2003	FH Darmstad/Germany		Double Degree	10	
VI Fakultas Teknik Mesin dan Dirgantara (FTMD)										
1	Teknik Mesin	Mechanical Engineering	S2	Sudah berjalan	2007	Toyohashi University of Technology/Japan	Agreement Covering The Implementation: August/Sept 2007	Twinning Program		
2	Aeronotika dan Astronotika	Aerospace Engineering	S2	Sudah berjalan	2007	Toyohashi University of Technology/Japan				
3	Teknik Material	Material Engineering & Science	S2	Sudah berjalan	2007	Toyohashi University of Technology/Japan				

Some Example of Research Activities
that also addressing community interest

- For ITB, being a world class university not only the matter of increasing publication in high impact journals but also how the research activities can contribute to the community development and national interest.
- The following slides are showing the example of ITB research activities that also addressing community/national interest

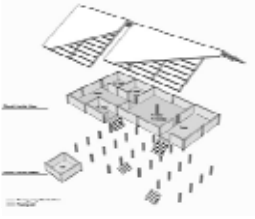

Examination of Critical Element on Earthquake Resistant Non Engineered Building: Confined Masonry Wall Type

Dr. Krishna S. Pribadi, DEA


Development of Environment and Healthy Houses for Riverfront Traditional Community

Ir. Basauli Umar Lubis, MSA, Ph.D

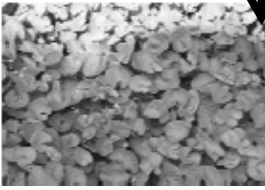
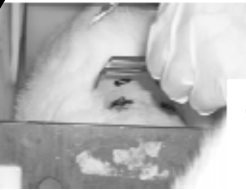
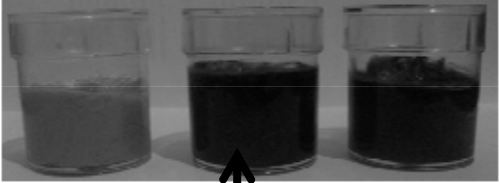
e-Farming Application Development as A Supporting Tool in Planning, Monitoring, Evaluating and Decision Making Related to Rice Cultivation to Support National Logistic Sustainability

Yusep Rosmansyah, Ph.D.




Formula Development of Liquid Spray from Indonesian Natural Products for Treatment of Injury and Infectious Skin Disease Practical, Efficient and Effective

I Ketut Adnyana, Apt., Ph.D

Formulat Development of Combination of Babadotan (*Ageratum conyzoides* L.) and Mahkota Dewa (*Phaleria macrocarpa* L.) Extracts for Wound Healing

I Ketut Adnyana, Apt., Ph.D

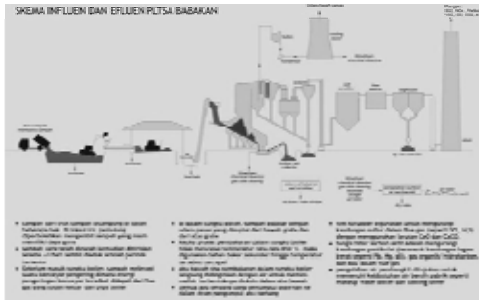


Diversity and Distribution of Rhopalocera as Indicator for Anticipation of Climate Change and Environmental Conservation in Indonesia

Dr. Devi Nandita Choesin

Development of Waste to Energy Pilot Plant Using
Municipal Solid Waste as the Fuel

Dr. Ir. Ari Darmawan Pasek



Chemical Properties of Leachate from Old Garbage at Leuwi Gajah and New Garbage at Rajamandala Kabupaten Bandung

Drs. Henry Setiyanto, MT

The Mapping and Inventorization of Traditional Batik Designs
as A Step of Cultural Heritage in the Attempt of Developing
Local Genius-Based Artefact at the Industrial Center in The Era
of Creative Industry

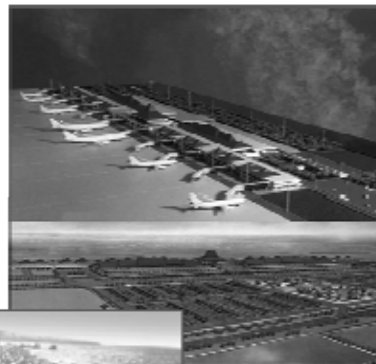
Yan Yan Sunarya, SSn.,
MSn.



Quality Improvement of The Accoustic Of Indonesian Traditional Music and The Design of Bali Gamelan Conser Accoustic based on the Phisio Accoustic Response

Example of Engineering Design and Construction
Addressing National Problems/Interests

ITB Own Company has been involved in several government project such as the Extension of Juanda International Airport in Surabaya, several bridges in Riau Island, Sumatra and Jawa, and break water technology to prevent coastal area



Manufacturing mobile water treatment. This equipment has been used in the Aid for disaster area such as in Aceh after tsunami Dec 2004



Preliminary development for fishery and new city planning in Asmat district, Papua



Thank You

資料 10 広島大学関連資料

1. 派遣学生単位認定願サンプル
2. 派遣学生単位認定通知書サンプル
3. 成績証明書サンプル
4. 単位修得証明書サンプル
5. UMAP 学修計画の記録サンプル
6. 大学、大学院の学位記サンプル
7. 各プログラムの協定書の基本項目とその内容

資料 10-1 派遣学生単位認定願サンプル

記入例

平成 年 月 日

派遣学生単位認定願

広島大学 学部長

殿

所属プログラム

学 生 番 号

氏 名 印

生 年 月 日 昭和 年 月 日生
平成

広島大学通則第29条第3項の規定に基づき、下記のとおり単位を認定して下さるようお願いいたします。

記

留学先大学名・所在地							
所属学部・学科又は大学院研究科名等							
在 籍 身 分		留学期間	平成 年 月 日～平成 年 月 日				
留 学 目 的							
研究・学習内容							
留学先大学で単位を認定された授業科目 (和訳を付すこと)	受講期間 年 月 日～年 月 日	週当り授業時間 (時間)	取得単位数 (単位)	評価	本学での認定を希望する授業科目	単位数 (単位)	評 価 指導教員様名
Globalization (グローバル化) 課題と挑戦	20 . . . ~ 20 . . .	3	4	B	都市文化論	2	優 印
Introduction to Peace Studies (平和学入門)	20 . . . ~ 20 . . .	2.5	3	C	都市文化論演習	2	優 印
Beginning Spanish (初級スペイン語)	20 . . . ~ 20 . . .	4	5	B'	紛争解決論	2	良 印
					ラテンアメリカ社会文化研究	2	優 印
留 学 先 大 学 で の 研 究 ・ 学 習 成 果							
指 導 教 員 所 見	指導教員氏名 印						
添 付 書 類	留学先大学が発行した学業成績証明書及びシラバス						

資料 10-2 派遣学生単位認定通知書サンプル

記入例

派遣学生単位認定通知書

学生番号
氏名

広島大学通則第29条第3項の規定に基づき、下記のとおり広島大学において修得したものと
して単位を認定する。

平成 年 月 日

広島大学 学部長

認定する授業科目及び単位数等						認定の基礎となった既修得単位等			
区分	授業科目	学部	単 位				既修得授業科目名等	修得単 位数等	評価
			秀	優	良	可			
専 門 教 育 科 目 （ 学 部 科 目 ）	都市文化論	学部		2			Globalization		B
	都市文化論演習	学部		2					
	紛争解決論	学部			2		Introduction to Peace Studies	3	C
	ラテンアメリカ社会文化研究	学部		2			Beginning Spanish	5	B ⁺
		合 計					合 計		
*単位修得大学（短期大学）：						*国名：			
備考 留学期間：平成 年 月 日～平成 年 月 日									

資料 10-3 成績証明書サンプル

学 業 成 績 証 明 書

第B069940号

学生番号 B069940
 氏 名 教育 情報
 生年月日 明治33年 1月 2日
 所 属 教養教育

指導教員

主専攻プログラム 動作テスト
 入学年月日 平成18年 4月 1日

科 目 名	単 位	評 価	修 得		科 目 名	単 位	評 価	修 得	
			年 度	学 期				年 度	学 期
教養教育科目					*****				
科目区分テスト1	2	秀	2011	前期	秀：100-90点, 優：89-80点				
科目区分テスト18	2	優	2011	前期	良：79-70点, 可：69-60点				
科目区分テスト2	2	優	2011	前期					
科目区分テスト19	2	良	2011	前期	*****				
科目区分テスト3	2	良	2011	前期	動作テスト2				
科目区分テスト20	2	可	2011	前期	[履修中]				
科目区分テスト4	2	可	2011	前期					
科目区分テスト21	2	秀	2011	前期					
科目区分テスト5	2	秀	2011	前期					
科目区分テスト6	2	優	2011	前期					
科目区分テスト7	2	良	2011	前期					
科目区分テスト22	2	優	2011	前期					
科目区分テスト23	2	良	2011	前期					
科目区分テスト24	2	可	2011	前期					
科目区分テスト8	2	可	2011	前期					
科目区分テスト25	2	秀	2011	前期					
科目区分テスト9	2	秀	2011	前期					
科目区分テスト26	2	優	2011	前期					
科目区分テスト10	2	優	2011	前期					
科目区分テスト27	2	良	2011	前期					
科目区分テスト11	2	良	2011	前期					
科目区分テスト28	2	可	2011	前期					
科目区分テスト12	2	可	2011	前期					
科目区分テスト29	2	秀	2011	前期					
科目区分テスト13	2	秀	2011	前期					
科目区分テスト30	2	秀	2011	前期					
科目区分テスト14	2	優	2011	前期					
科目区分テスト31	2	良	2011	前期					
科目区分テスト15	2	良	2011	前期					
科目区分テスト32	2	可	2011	前期					
科目区分テスト16	2	可	2011	前期					
科目区分テスト34	2	優	2011	前期					
科目区分テスト17	2	秀	2011	前期					
科目区分テスト33	2	秀	2011	前期					
計	68単位								
専門教育科目									
テスト科目4	2	良	2010	後期					
成績評価テスト3	2	優	2010	後期					
計	4単位								
他学部・他研究科科目									
成績評価テスト1	2	可	2010	後期					
成績評価テスト4	2	良	2010	後期					
計	4単位								
総修得単位数						76単位			

上記のとおり修得したことを証明する。

平成24年 2月20日

単位修得証明書

Certificate of Academic Record at Hiroshima University

氏名/Name:

生年月日/Date of Birth:

国名/Country:

在籍期間/Enrollment Period:

上記の者に対し、広島大学特別聴講学生として下記のとおり単位を修得したことを証明する。
This certifies the academic performance of the student above who enrolled in the Hiroshima University as a Special Auditing Student.

記

聴講授業科目名 Title of Subject	単位 Credits	単位認定(秀・優・良・可) Grade (S,A,B,C) ※1	学期 Semester
Japanese Society and Lifestyles B	2		Fall
Introduction to Phonetics and Phonology	2		Fall
HUSA Internship I :Career Theory and Practice	2		Fall
Studies on Graphic Design	2		Fall
Special Subject III	2		Fall

※1:Grade Scale: S=100-90%,A=89-80%,B=79-70%,C=69-60%
Grade Scale for the class(es) made 〇:A=100-80%,B=79-70%,C=69-60%

Date: February 21, 2012

資料 10-5 UMAP 学修計画の記録サンプル

**UMAP CREDIT TRANSFER SCHEME (UCTS)
RECORD OF UMAP STUDY PROGRAM
TRANSCRIPT OF UMAP STUDY PROGRAM RESULTS
UMAP 単位互換方式 (UCTS)
UMAP学修計画の記録(UMAP学修計画の成績証明)**

1. STUDENT'S PERSONAL DATA / 交流学生の個人データ

(The information provided in this form will be treated in confidence by the home and host institutions. Data from the form may be used for UMAP/UCTS statistical purposes, but only in an aggregated and non-identifiable manner.) (この書式により提供された情報は、原籍機関、受入機関により秘密に扱われる。この書式から得た情報を、UMAP/UCTSの統計をとる目的で使用することもあるが、これは集計的なもので、個人が明確になることはない)

Name/氏名: Home institution/原籍機関:
Country/国名: Date of Birth/生年月日:
Sex/性別: Student Identification number/学籍番号:

2. TRANSCRIPT OF UMAP STUDY PROGRAM RESULTS /UMAP学修計画の成績証明

Host Institution course unit 受入機関授業科目			Host Institution 受入機関		UCTS Host Institution to fill in 受入機関記入		Home Institution 原籍機関	
Code/科目コード	Title/授業科目	Duration/ 授業期間	Grade/ 成績	Credits/ 単位	Grade/ 成績	Credits/ 単位	Grade/ 成績	Credits/ 単位
A17080	Japanese Society and Lifestyles B	Fall 2010		2		3.87		
A11020	Introduction to Phonetics and Phonology	Fall 2010		2		3.87		
C6V121	HUSA Internship I :Career Theory and Practice	Fall 2010		2		3.87		
CPM290	Studies on Graphic Design	Fall 2010		2		3.87		
G54530	Special Subject III	Fall 2010		2		3.87		

※1:Grade Scale: S=100-90%,A=89-80%,B=79-70%,C=69-60%
Grade Scale for the class(es) made: A=100-80%,B=79-70%,C=69-60%

3. CERTIFICATION OF UMAP STUDY PROGRAM /

Host Institution / 受入機関

Home Institution / 原籍機関

Signed/ 署名
(Signature of registrar/dean/administration officer)
(教務部長・学部長・または責任者の署名)

Signed/ 署名
(Signature of registrar/dean/administration officer)
(教務部長・学部長・または責任者の署名)

Date / 日付: February 21, 2012

Date / 日付:

INSTITUTION STAMP/ 機関公印

INSTITUTION STAMP/ 機関公印

NOTE: This document is not valid without the signatures of the registrars/deans/administration officers and stamps of the host and home institutions.

注意: 本文書は、受入機関・原籍機関双方の教務部長・学部長・または責任者の署名がなくては有効とはならない。

資料 10-6 大学、大学院の学位記サンプル

		割印	
		第	号
卒業証書		学位記	
氏名			
	年	月	日生
本学	学部	学科所定の課程(プログラム)を修めて本学を卒業したことを認め
学士(「専攻分野」)の学位を授与する			
	年	月	日
	広島大学	学部長	印
	広島大学長		印

		割印	
		第	号
		学位記	
氏名			
	年	月	日生
本学大学院	研究科	専攻の	修士課程
			博士課程前期
を修了したので修(博)士(「専攻分			
野」)の学位を授与する。			
	年	月	日
	広島大学		印

出典：広島大学学位規則(学位記及び申請書等の様式)別記様式第1号、2号(第16条関係)

プログラム名	短期交換留学 (HUSA)	INUダブル・ディグリー・プログラム	リンケージプログラム
<p>構成</p>	<p>「Agreement (契約書)」と「Memorandum (附属書)」</p> <ul style="list-style-type: none"> ・ 学生数と期間： 名、1年以内。 ・ 費用：留学生は受入大学に検定料・入学科・授業料を支払う必要はない。 ・ VISA：学生は受入大学からVISA申請に必要な書類、許可を得ることができる。 ・ 学生の身分と選考方法：学部生は 大学では特別聴講学生として位置づけられる。など、学生の選考は受入大学の決定に任せる。 ・ 提供される授業：留学生は基本的に、受入大学から提供される全ての授業に参加が可能である。 ・ 単位互換：各大学はそれぞれの規則と手続きにしたがって、学生の単位互換を進めるよう努力する。 ・ 宿舍：各大学は学生の宿舍探いに協力する。 ・ 大学同士の協力体制：プログラム実施に関することは全期間の2年を過ぎて論文のみが未完成の場合は、1年間のみ、授業料相互不徴収のままプログラムを延長することができ、 ・ 協定書の有効期限：両大学が協定書にサインしてから期間は有効。 ・ 協定書作成言語：協定書は 語と日本語で締結されており、その有効性は同じである。 ・ 協定書の有効期限：協定は3年間有効、その後は更新とする。 	<ul style="list-style-type: none"> ・ プログラムが対象とする分野：修士における「地球市民と平和」に関する分野 ・ 費用：授業料相互不徴収 ・ 単位互換：両大学ともに卒業必要単位数の3分の1を認める ・ 学生ケアの問題：メンタルケア、保険、住居等(宿舍探しはできる限り両大学で行う。韓国では住居の提供がある) ・ カリキュラム：協定大学での授業は英語で行う。特別なプログラムを行う場合は 大学が 単位を用意し、年間維持する、など。 ・ 論文：両大学で1本ずつ、合計2本を作成する。ただし修了予定 ・ 期間の2年を過ぎて論文のみが未完成の場合は、1年間のみ、授業料相互不徴収のままプログラムを延長することができ、 ・ 協定書の有効期限：協定は3年間有効、その後は更新とする。 	<p>BAPENAS、MOFと広島大学の間で結ばれた「Memorandum of Understanding (覚書)」と、各大学間で結ばれた「Technical Academic Agreement (契約書)」</p> <ul style="list-style-type: none"> ・ プログラムの骨子：リンケージプログラムの定義、両大学から2つの修士が授与される。1年目はインドネシアの大学で基礎研究を行い2年目は広島大学で政策研究を行う。各大学から授与される修士号(経済学修士、教育学修士、など)。 ・ プログラムが対象とする分野：インドネシアの大学では経済学および開発経済学、広島大学では国際開発協力の分野。 ・ 学生数：1年間にBAPENASとMOFから6名。 ・ 学年：インドネシアの大学は8月、広島大学は10月に授業が開始され、プログラムは2年で終了とする。 ・ 授業料と他の費用：授業料および、教員が学生への研究指導のため渡航する場合その旅費はBAPENASとMOFから大学に支払われる。 ・ 共同教育プログラム委員会：インドネシアの大学と広島大学の代表者によって共同教育プログラム委員会を設立する。大学間で契約上の問題が発生した場合は同委員会で協議する、など。 ・ 入学条件：インドネシアの大学は成績、英語能力、研究能力・プログラムへの適性を見て候補者を選ぶ、学生の選考は広島大学との協議の下インタビューを通じて行われる。など。 ・ カリキュラムと卒業必要単位数：インドネシア大学では42単位、広島大学では30単位を取得しなければならない。1年目と2年目の全ての授業、ガイダンスは英語で行われる、など。 ・ 論文と単位互換：インドネシア大学では18単位、広島大学では10単位が単位互換可能である。論文計画書の作成とその準備は1年目から始め、2年目に広島大学で論文作成と審査を行う。 ・ 契約の終了と延長：契約は6年間有効であり、変更・終了・延長を望む場合は関係者に事前通知を行う。 ・ 問題解決：契約に関して何か問題が起こった場合、関係者が協議によって問題解決に努めること、ただし協議による解決が不可能な場合は外部による調停を行う。
<p>協定書の基本項目と内容</p>			

資料 11 現地調査写真

➤ タイ現地調査



タマサート大学にて
(Dr. Taweep Chaisomphob, Duangchai Subhasaram)



マヒドン大学理学部にて
(Dr. Kanyaratt Supaibulwatana,)



カセサート大学工学部航空宇宙工学科にて
(Dr. Chaiwat Klampol 他 2 名)



カセサート大学農学部にて
(Dr. Donludee Jaisut 他 3 名)



チュラロンコン大学本部にて
(Dr. Kalaya Tingsabadh)



チュラロンコン大学心理学部
(Dr. Watcharaporn Boonyasiriwat, Dr. Kullaya Pitsungkagarn)



マヒドン大学理学部にて
(Dr. Kanyaratt Supaibulwatana,)



キングモンクット工科大学トンブリ校にて
(Dr. Anak Khantachawana, Dr. Worrasi Tantinipankul)

➤ インドネシア現地調査



ガジャマダ大学国際協力部にて
(Dr. Woro Anindito Sri Tunjung)



ガジャマダ大学工学部にて
(Dr. Siti Malkhamah, Dr. Rahman Sudiyo)



ガジャマダ大学工学部にて



ガジャマダ大学国際協力部にて
(Rio Rini Diah Moehkardi, Dr. Rachmat Sriwijaya)



バンドン工科大学建築学部にて
(Dr. Agus S.Ekomadyo 'Dr. Hanson Endra Kusuma)



バンドン工科大学国際関連部にて
Dr. Tatacipta Dirgantara



バンドン工科大学にて
豊橋技術科学大学事務所



バンドン工科大学にて
東北大学事務所



インドネシア教育文化省にて
(Ms. Illha Sailah 所長、他スタッフ 2 名)



インドネシア教育文化省にて



インドネシア教育文化省にて



インドネシア大学国際室



インドネシア大学



インドネシア大学国際室にて
(Junaidi M.A 国際室室長、他 2 名)

➤ マレーシア現地調査



マレーシア高等教育省にて
(Dr. Zubaidah Binti Aman)



マラヤ大学 Asia-Europe Institute にて
(Dr. Md Nasrudin Md Akhir、他 2 名)



マレーシア日本国際工科院
(マレーシア工科大学)にて



マレーシア日本国際工科院にて
(木下副学部長、寺門 JICA 専門家)

➤ ベトナム現地調査



ヴェトナム国家大学ハノイ校質保証教育研究所にて
(Dr. Hoang Thi Xuan Hoa、他 2 名)



ハノイ技術科学大学国際教育学部にて
(Dr. Nguyen Thi Puuong Mai、他 4 名)



教育訓練省国際連携課にて
(Mr. Luu Anh Tuan)



ホーチミン国際大学にて
(Dr. Phan Bao Ngoc、他 2 名)



RMIT 大学ホーチミン校にて
(Dr. Anthony de Souza-Daw、Mr. Hugh McCann)



ヴェトナムドイツ大学

➤ シンガポール現地調査



南洋工科大学にて
(Ms. Pauline Ho、他 5 名)



シンガポール経営大学にて
(Ms. Isabelle Malique-Park、他 3 名)



シンガポール管理学院にて
(Ms. Ho Soon Eng)

➤ フィリピン現地調査



アンヘレス大学にて



高等教育委員会 Executive Director Attorney Vitriolo 氏



アンヘレス大学副学長と高等教育委員会のスタッフ