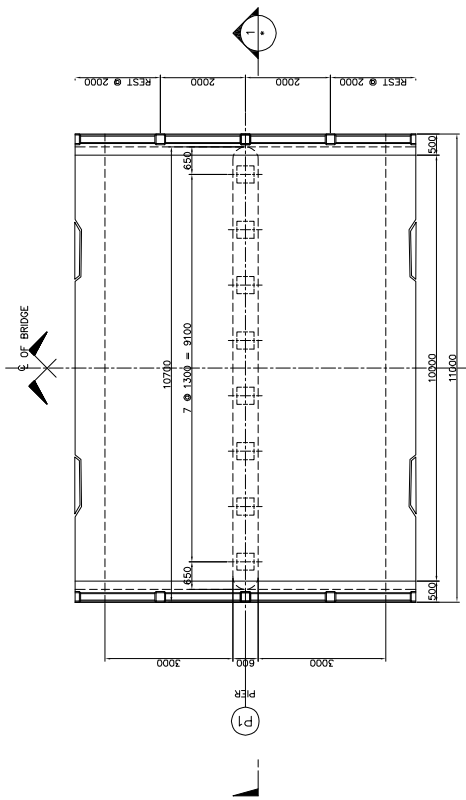
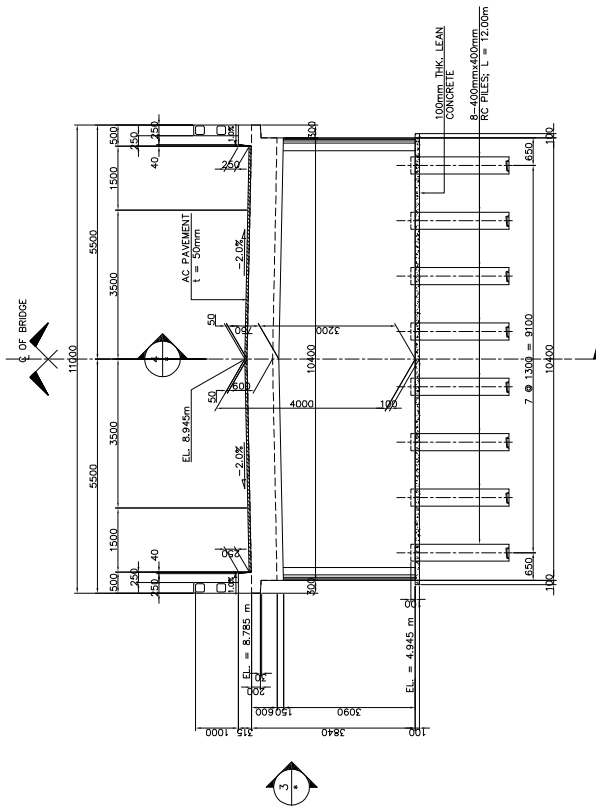


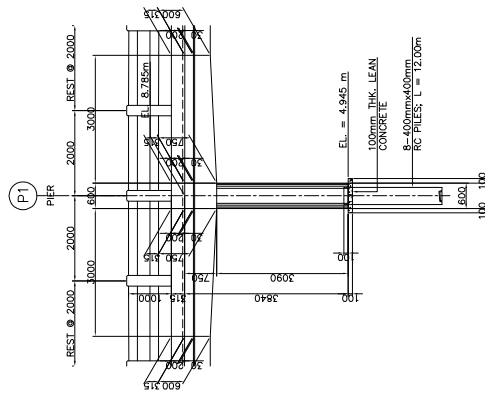
MINISTRY OF PUBLIC WORKS AND TRANSPORT (MPWT)	THE PROJECT FOR FLOOD DISASTER REHABILITATION AND MITIGATION IN THE KINGDOM OF CAMBODIA	JAPAN INTERNATIONAL COOPERATION AGENCY KATAHIRA & ENGINEERS INTERNATIONAL	TITLE : CLV-1 TKOV II BRIDGE SUBSTRUCTURE STRUCTURAL DIMENSION (ABUT. A2)	SCALE	AS SHOWN	Drawing No.	6-4
				AS SHOWN		Sheet No.	



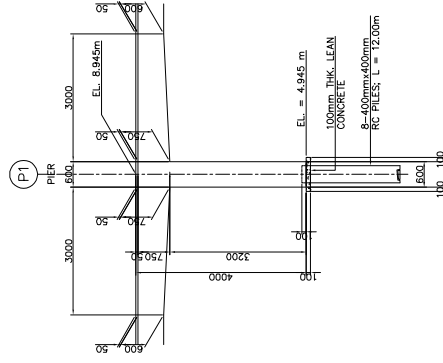
2 PLAN SCALE 1:180



1 ELEVATION SCALE 1:180



3 ELEVATION SCALE 1:180



4 SECTION SCALE 1:180

MINISTRY OF  
PUBLIC WORKS AND TRANSPORT  
(MPWT)

THE PROJECT FOR FLOOD  
DISASTER REHABILITATION AND  
MITIGATION  
IN THE KINGDOM OF CAMBODIA

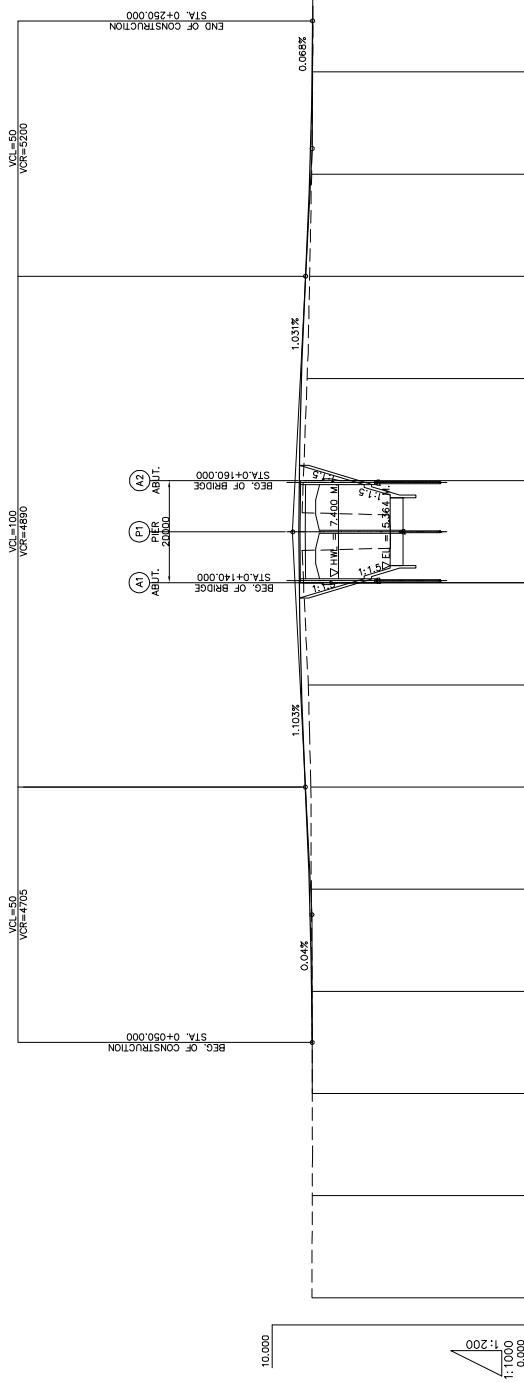
JAPAN INTERNATIONAL COOPERATION AGENCY  
KATAHIRA & ENGINEERS INTERNATIONAL

TITLE:  
CLV-1 TKOV II BRIDGE  
SUBSTRUCTURE STRUCTURAL DIMENSION  
(PIER P1)

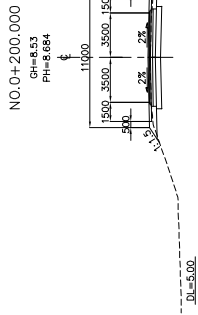
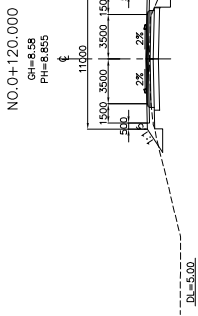
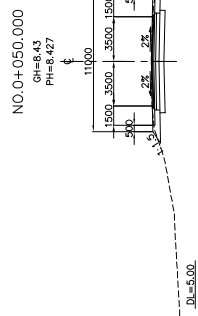
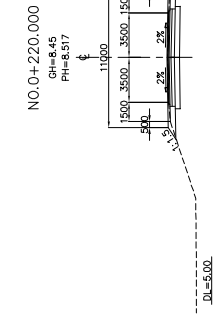
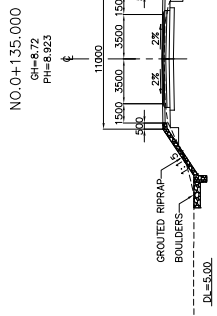
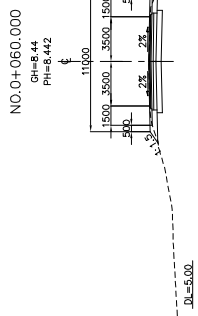
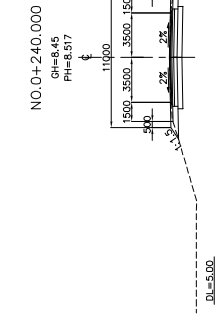
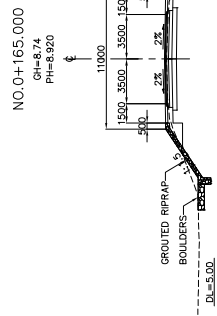
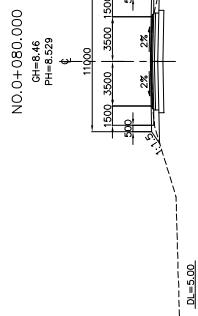
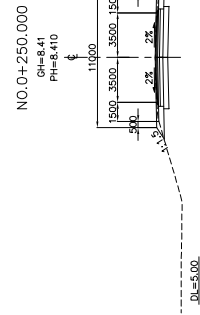
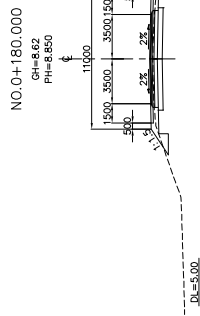
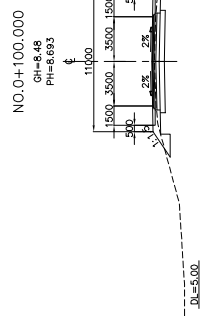
SCALE  
AS SHOWN

Drawing No.  
Sheet No.

6-5



VERTICAL ALIGNMENT	PAVEMENT LEVEL	GROUND LEVEL	STATION	HORIZONTAL ALIGNMENT	SUPER-ELEVATION	WIDENING
8.427	8.442	8.44	0+000			
8.440	8.529	8.46	0+080			
8.693	8.693	8.48	0+100			
8.585	8.585	8.58	0+120			
8.935	8.934	8.77	0+140			
8.684	8.684	8.53	0+200			
8.517	8.45	8.45	0+220			
8.426	8.426	8.41	0+240			
8.410	8.41	8.39	0+260			
8.41	8.41	8.39	0+280			
8.41	8.41	8.39	0+300			



MINISTRY OF  
PUBLIC WORKS AND TRANSPORT  
(MPWT)

THE PROJECT FOR FLOOD  
DISASTER REHABILITATION AND  
MITIGATION  
IN THE KINGDOM OF CAMBODIA

JAPAN INTERNATIONAL COOPERATION AGENCY  
KATAHIRA & ENGINEERS INTERNATIONAL

TITLE:  
CLV-1 TKOV II BRIDGE  
APPROACH ROAD CROSS SECTION S

SCALE  
1:400

Drawing No.

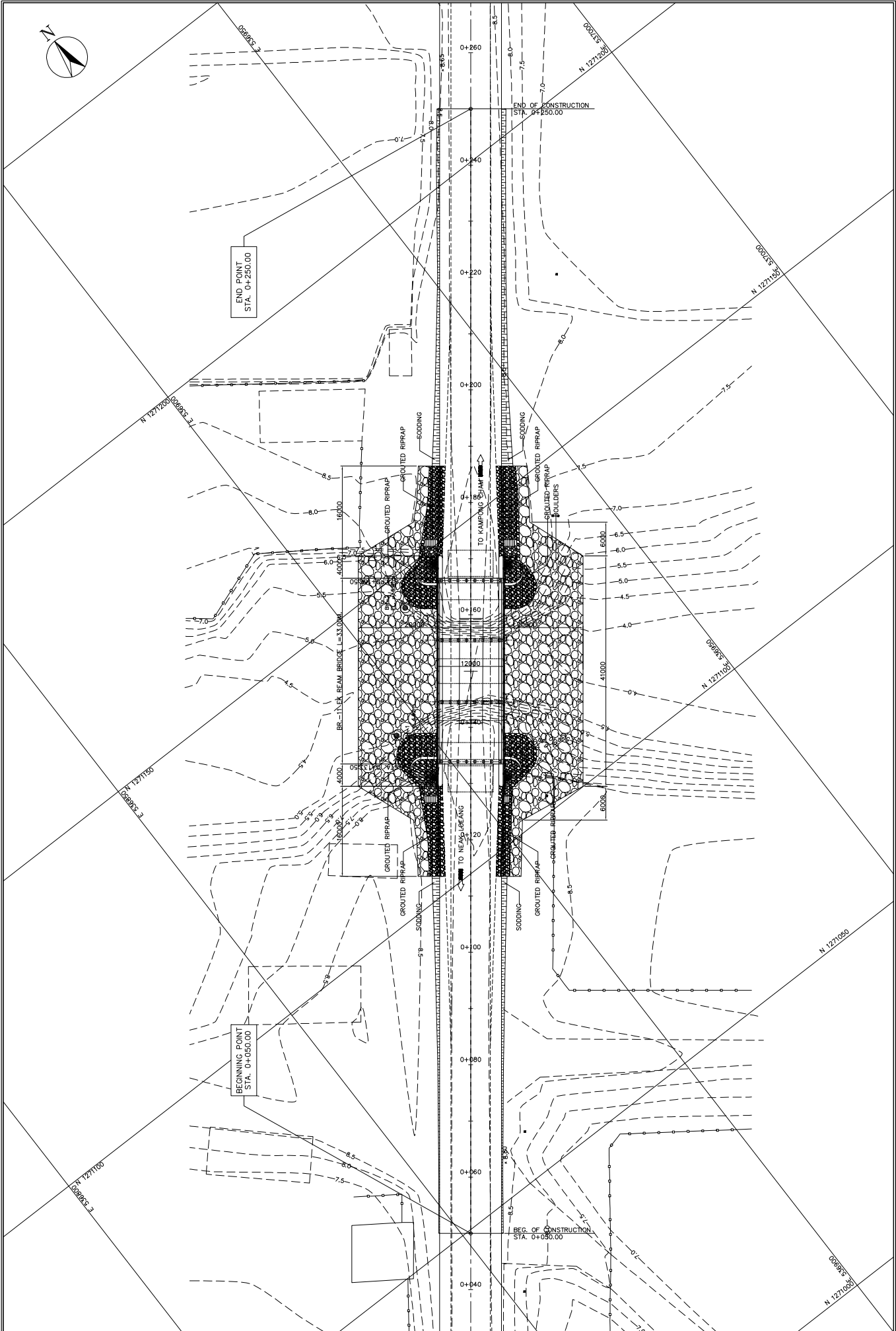
Sheet No.

6-7

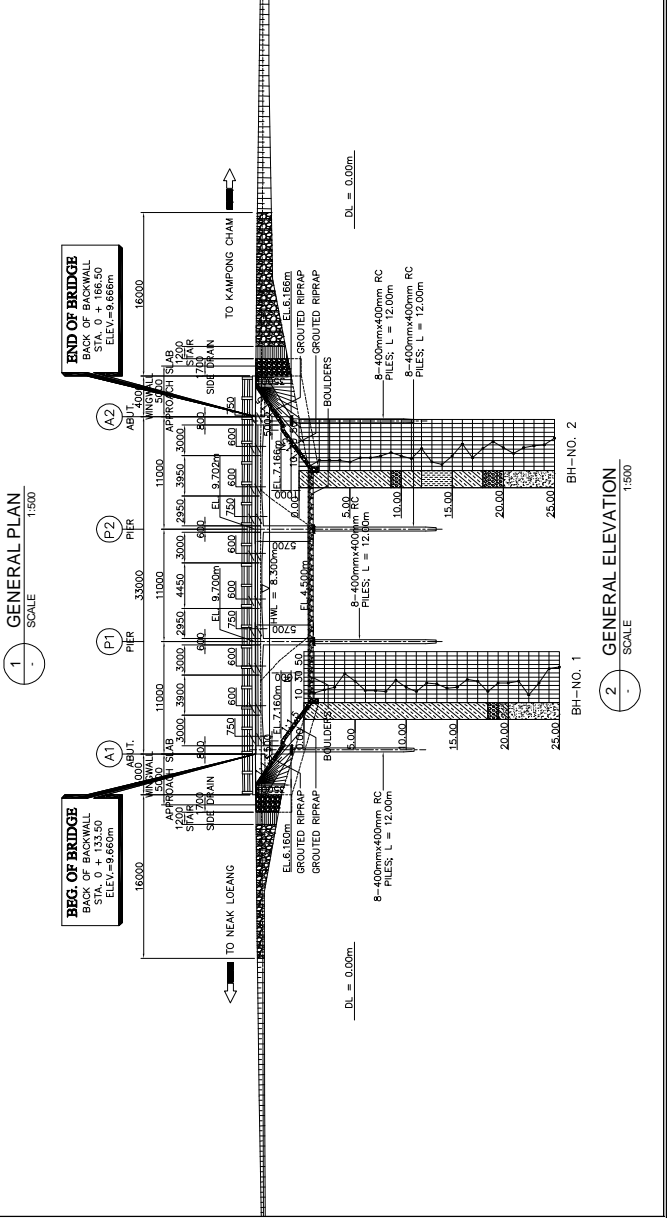
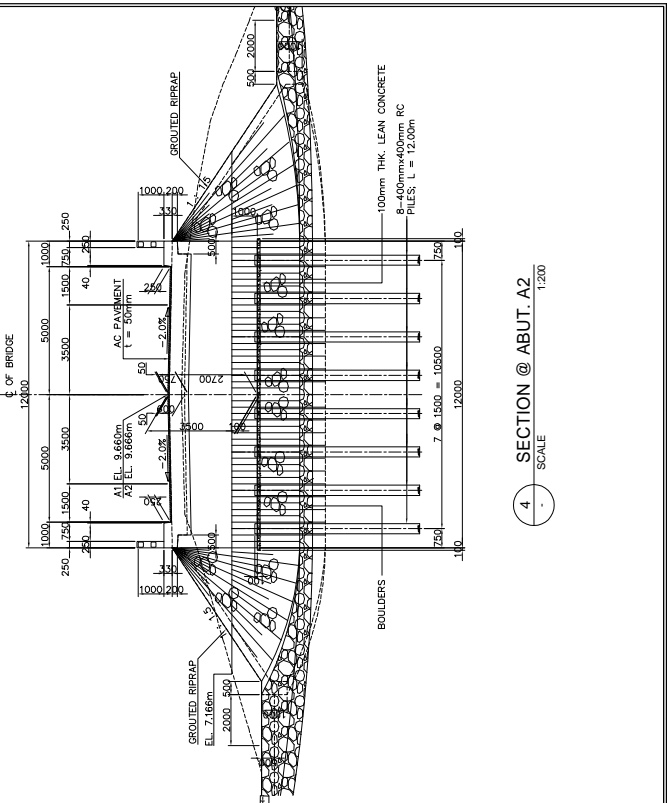
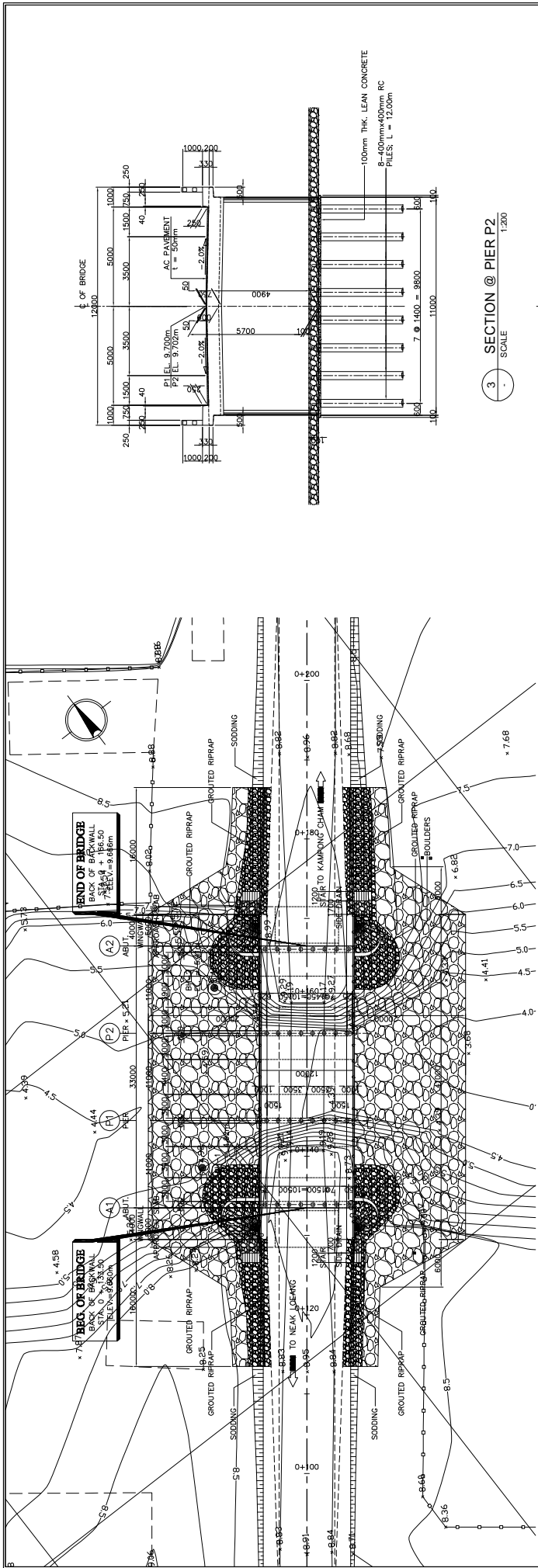
---

# BR-11 EK REAM BRIDGE

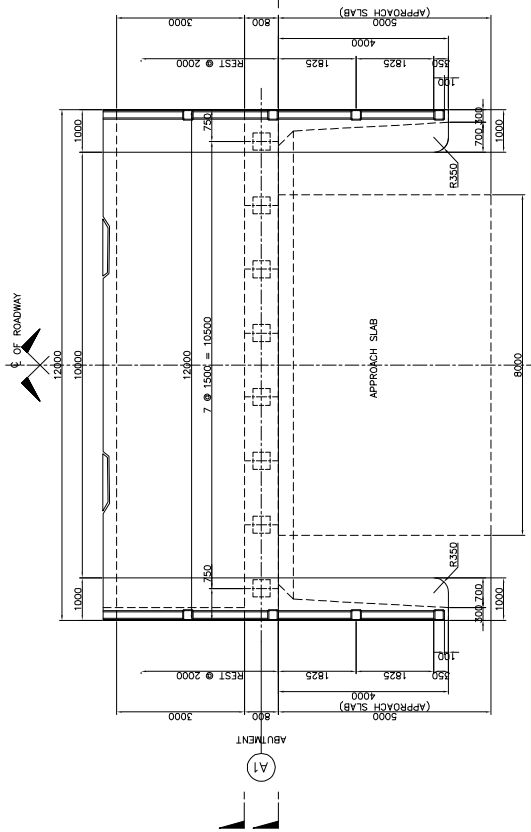
---



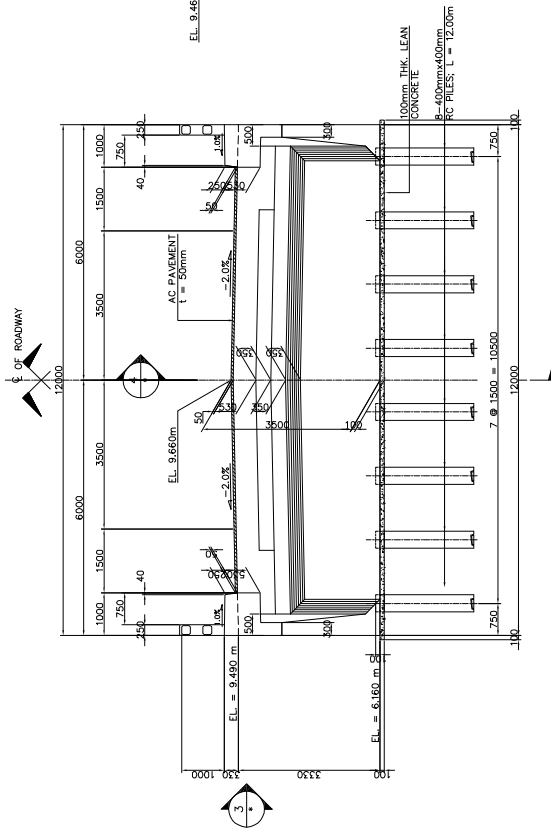
MINISTRY OF PUBLIC WORKS AND TRANSPORT (MPWT)	THE PROJECT FOR FLOOD DISASTER REHABILITATION AND MITIGATION IN THE KINGDOM OF CAMBODIA	JAPAN INTERNATIONAL COOPERATION AGENCY KATAHIRA & ENGINEERS INTERNATIONAL	TITLE: BR-11 EK REAM BRIDGE GENERAL SITE PLAN	SCALE	Drawing No.
				1:800	7 - 1
				Sheet No.	



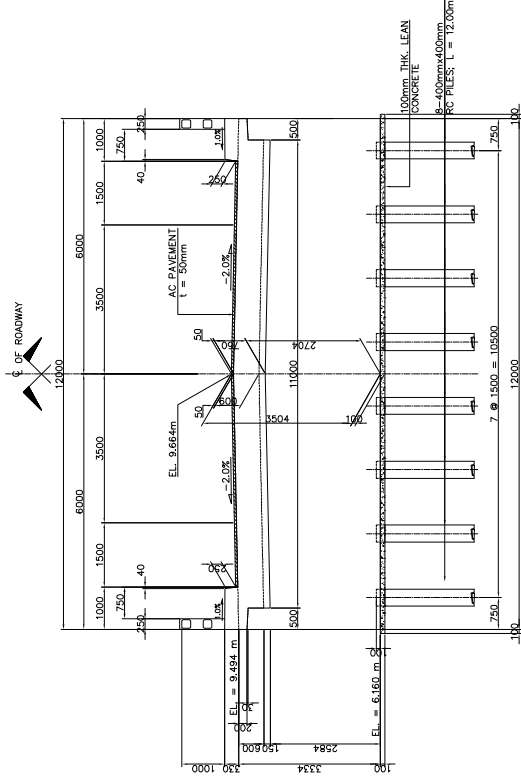
MINISTRY OF PUBLIC WORKS AND TRANSPORT (MPWT)	THE PROJECT FOR FLOOD DISASTER REHABILITATION AND MITIGATION IN THE KINGDOM OF CAMBODIA	JAPAN INTERNATIONAL COOPERATION AGENCY KATAHIRA & ENGINEERS INTERNATIONAL	TITLE: BR-11 EK REAM BRIDGE GENERAL VIEW	SCALE AS SHOWN	Drawing No.
					Sheet No.
					7-2



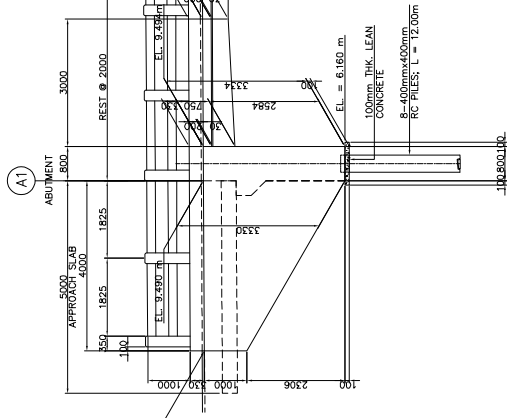
2 PLAN SCALE 1:60



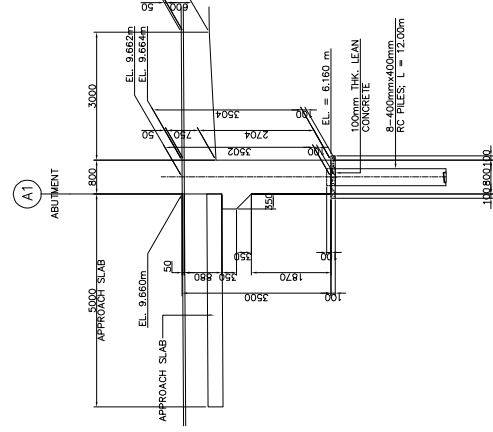
1 ELEVATION SCALE 1:60



5 ELEVATION SCALE 1:60



3 ELEVATION SCALE 1:60



4 SECTION SCALE 1:60

MINISTRY OF  
PUBLIC WORKS AND TRANSPORT  
(MPWT)

THE PROJECT FOR FLOOD  
DISASTER REHABILITATION AND  
MITIGATION  
IN THE KINGDOM OF CAMBODIA

JAPAN INTERNATIONAL COOPERATION AGENCY  
KATAHIRA & ENGINEERS INTERNATIONAL

TITLE: BR-11 EK REAM BRIDGE  
SUBSTRUCTURE STRUCTURAL DIMENSION  
(ABUT. A1)

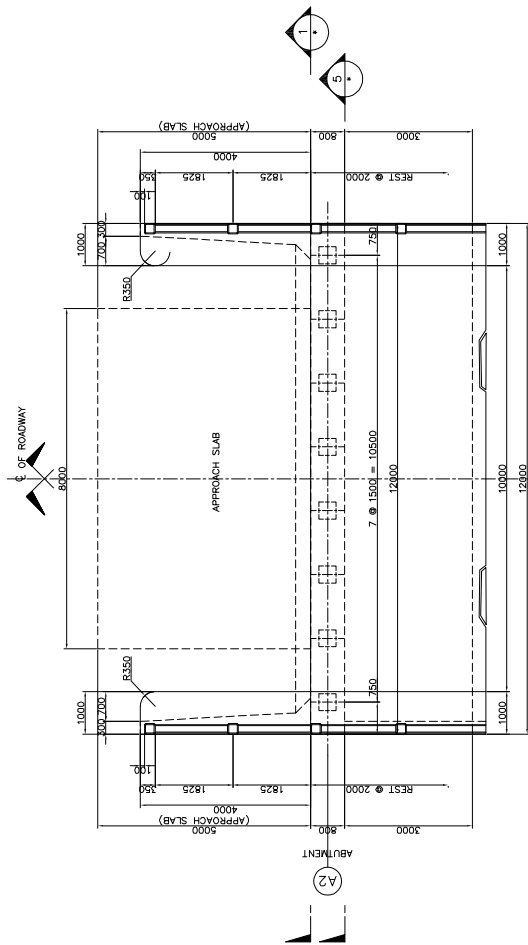
SCALE  
AS SHOWN

Drawing No.

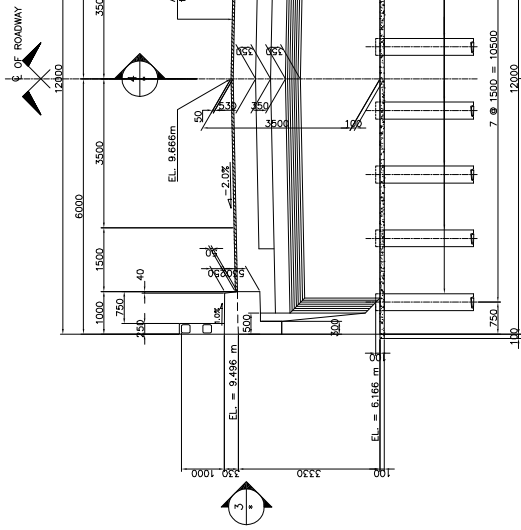
Sheet No.

7-3

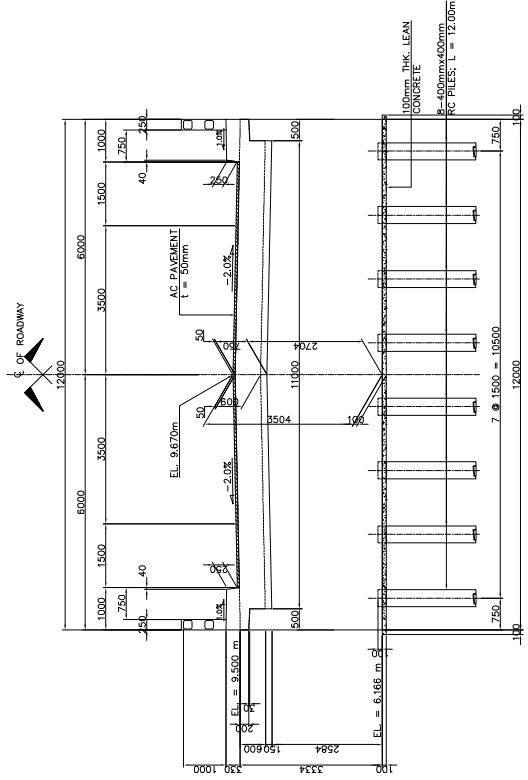




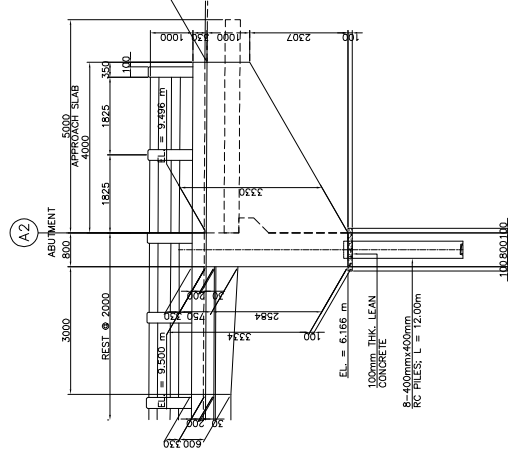
2 PLAN  
SCALE 1:150



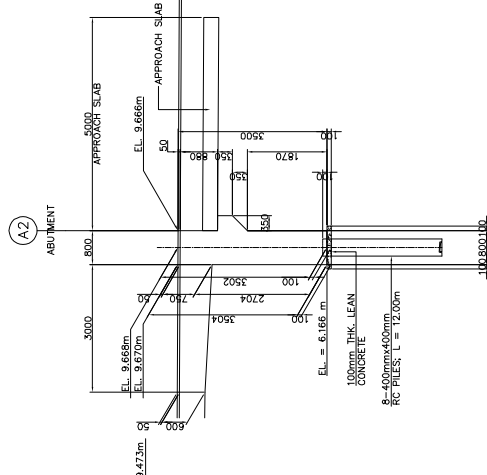
1 ELEVATION  
SCALE 1:150



5 ELEVATION  
SCALE 1:150



3 ELEVATION  
SCALE 1:150



4 SECTION  
SCALE 1:150

MINISTRY OF  
PUBLIC WORKS AND TRANSPORT  
(MPWT)

THE PROJECT FOR FLOOD  
DISASTER REHABILITATION AND  
MITIGATION  
IN THE KINGDOM OF CAMBODIA

JAPAN INTERNATIONAL COOPERATION AGENCY  
KATAHIRA & ENGINEERS INTERNATIONAL

TITLE : BR-11 EK REAM BRIDGE  
SUBSTRUCTURE STRUCTURAL DIMENSION  
(ABUT. A2)

SCALE  
AS SHOWN

Drawing No.

Sheet No.

7-4

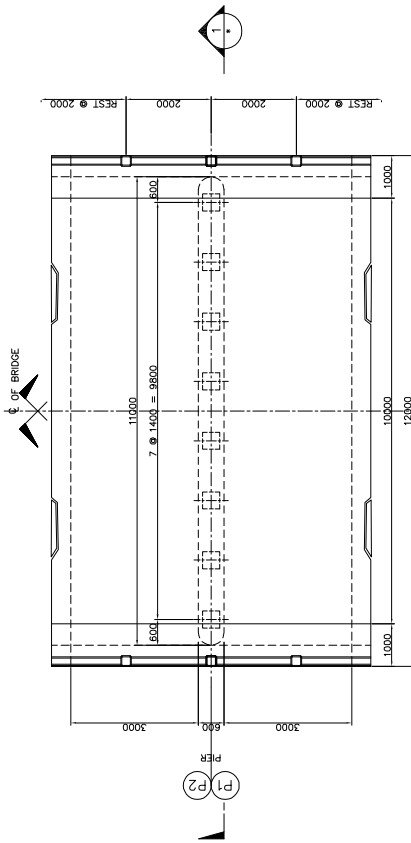
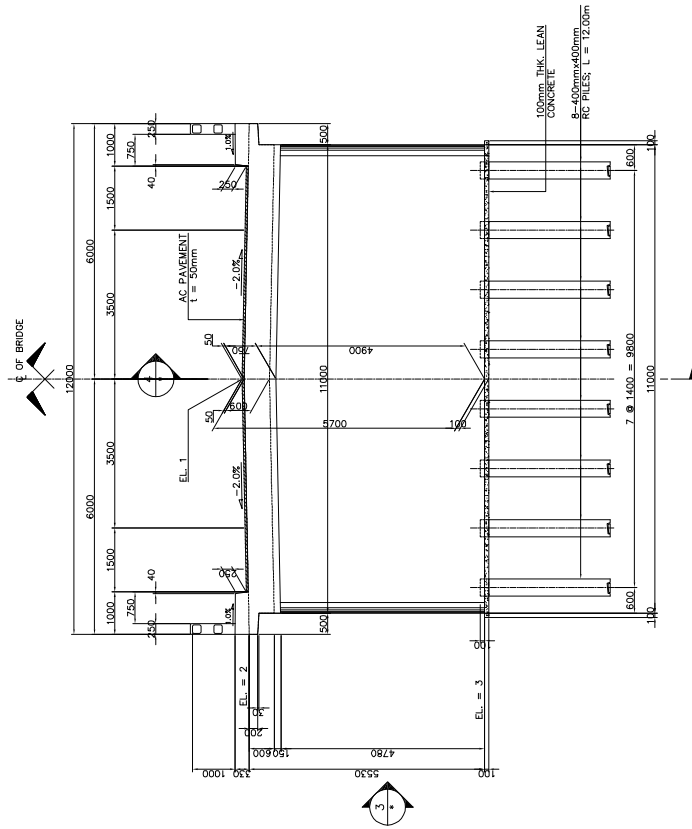


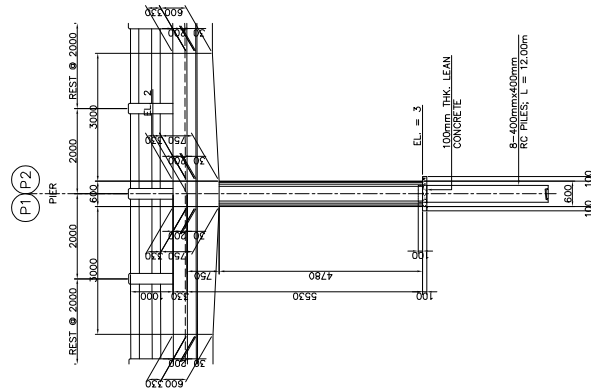
TABLE OF ELEVATIONS

LOCATION	EL. 1	EL. 2	EL. 3
PIER 1	9.700m	9.530m	4.000m
PIER 2	9.702m	9.532m	4.002m

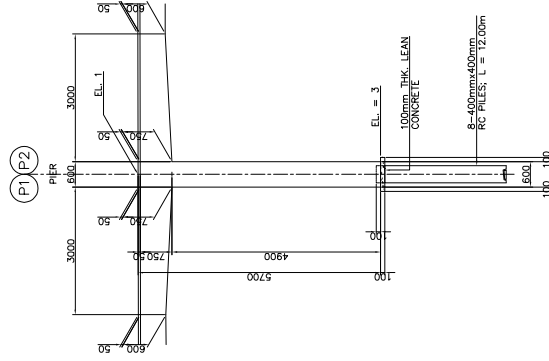
2 PLAN SCALE 1:60



1 ELEVATION SCALE 1:60



3 ELEVATION SCALE 1:60



4 SECTION SCALE 1:60

MINISTRY OF PUBLIC WORKS AND TRANSPORT (MPWT)

THE PROJECT FOR FLOOD DISASTER REHABILITATION AND MITIGATION IN THE KINGDOM OF CAMBODIA

JAPAN INTERNATIONAL COOPERATION AGENCY KATAHIRA & ENGINEERS INTERNATIONAL

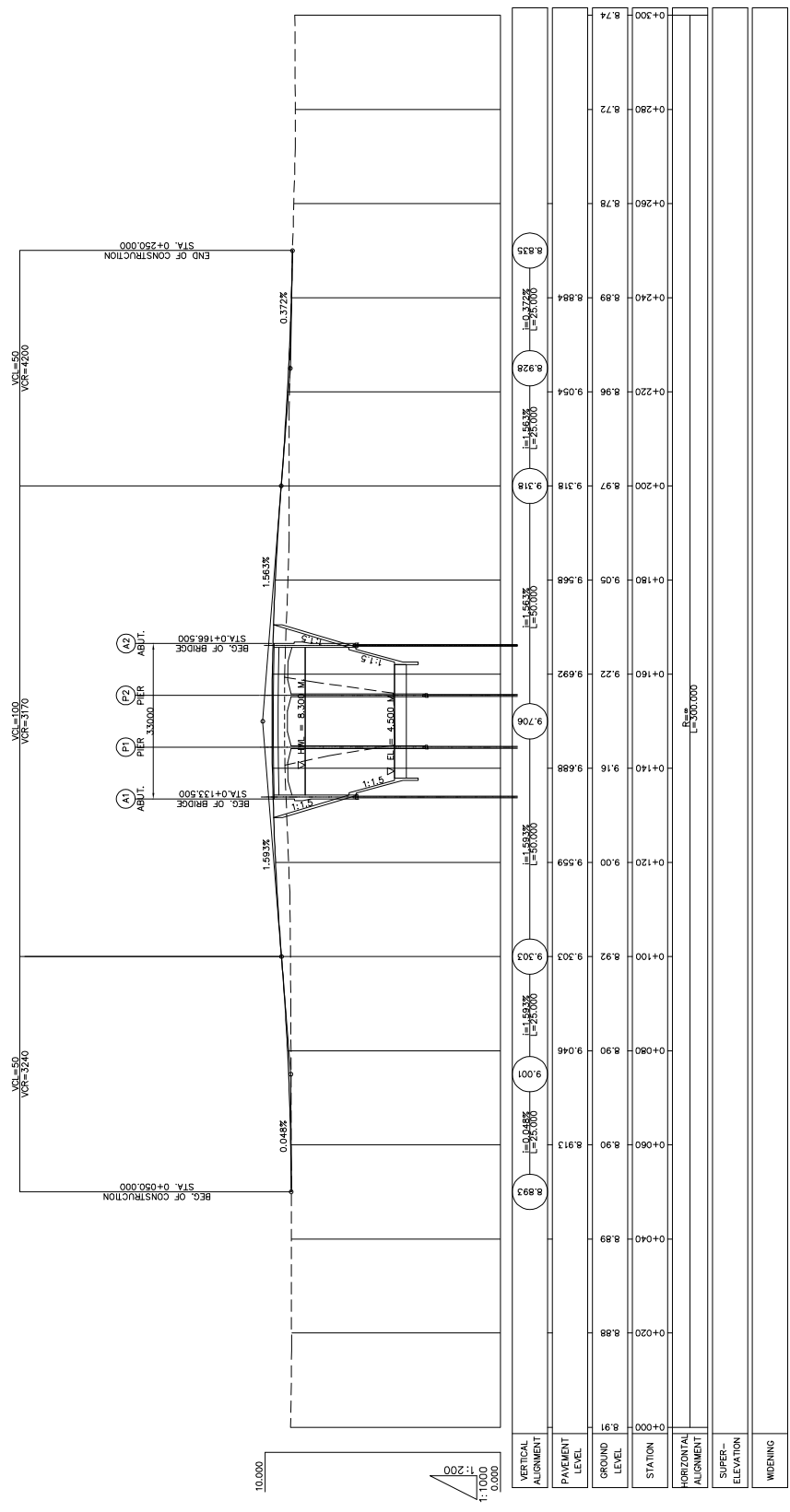
TITLE: BR-11 EK REAM BRIDGE SUBSTRUCTURE STRUCTURAL DIMENSION (PIER P1 & P2)

SCALE AS SHOWN

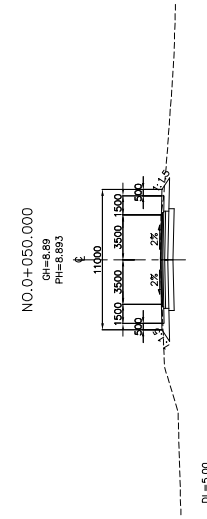
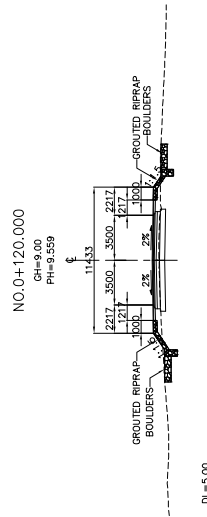
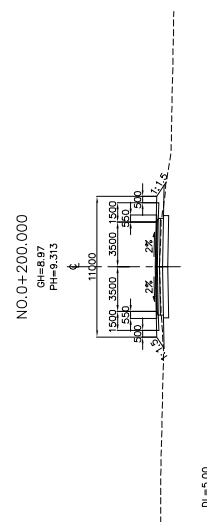
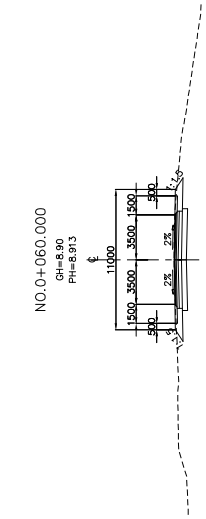
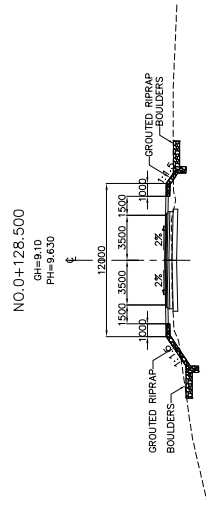
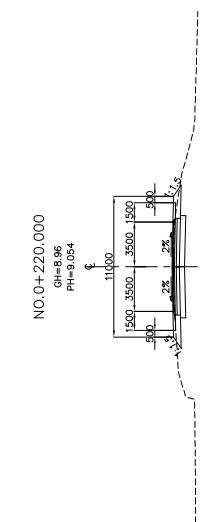
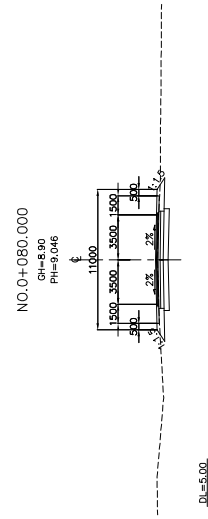
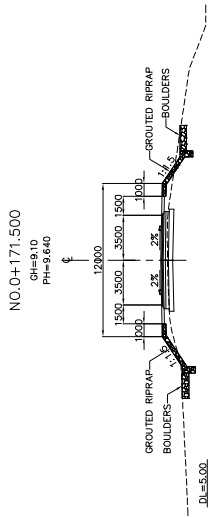
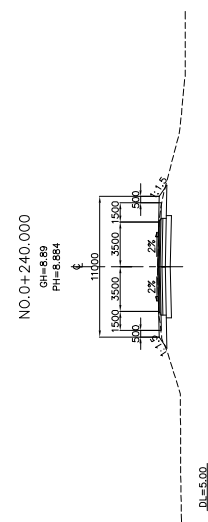
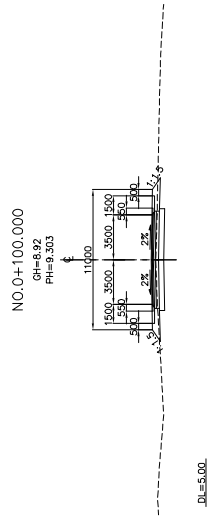
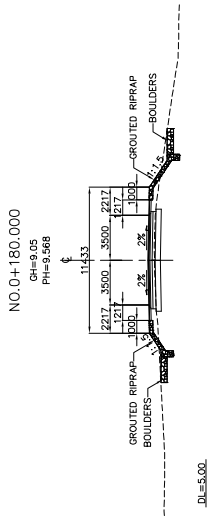
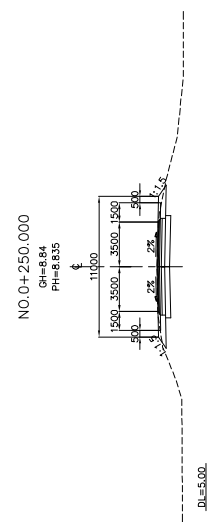
Drawing No.

Sheet No.

7-5



VERTICAL ALIGNMENT	8.893	9.001	9.303	9.706	9.318	9.054	8.928	8.835
PAVEMENT LEVEL	8.913	9.046	9.303	9.706	9.318	9.054	8.928	8.835
GROUND LEVEL	8.90	8.90	8.92	9.16	9.22	9.568	8.984	8.74
STATION	0+060	0+080	0+100	0+140	0+160	0+180	0+220	0+300
HORIZONTAL ALIGNMENT	L=3000.000							
SUPER-ELEVATION								
WIDENING								



MINISTRY OF PUBLIC WORKS AND TRANSPORT (MPWT)	THE PROJECT FOR FLOOD DISASTER REHABILITATION AND MITIGATION IN THE KINGDOM OF CAMBODIA	JAPAN INTERNATIONAL COOPERATION AGENCY KATAHIRA & ENGINEERS INTERNATIONAL	TITLE : BR-11 EK REAM BRIDGE APPROACH ROAD CROSS SECTIONS	SCALE	Drawing No.
				1 : 400	
					Sheet No.

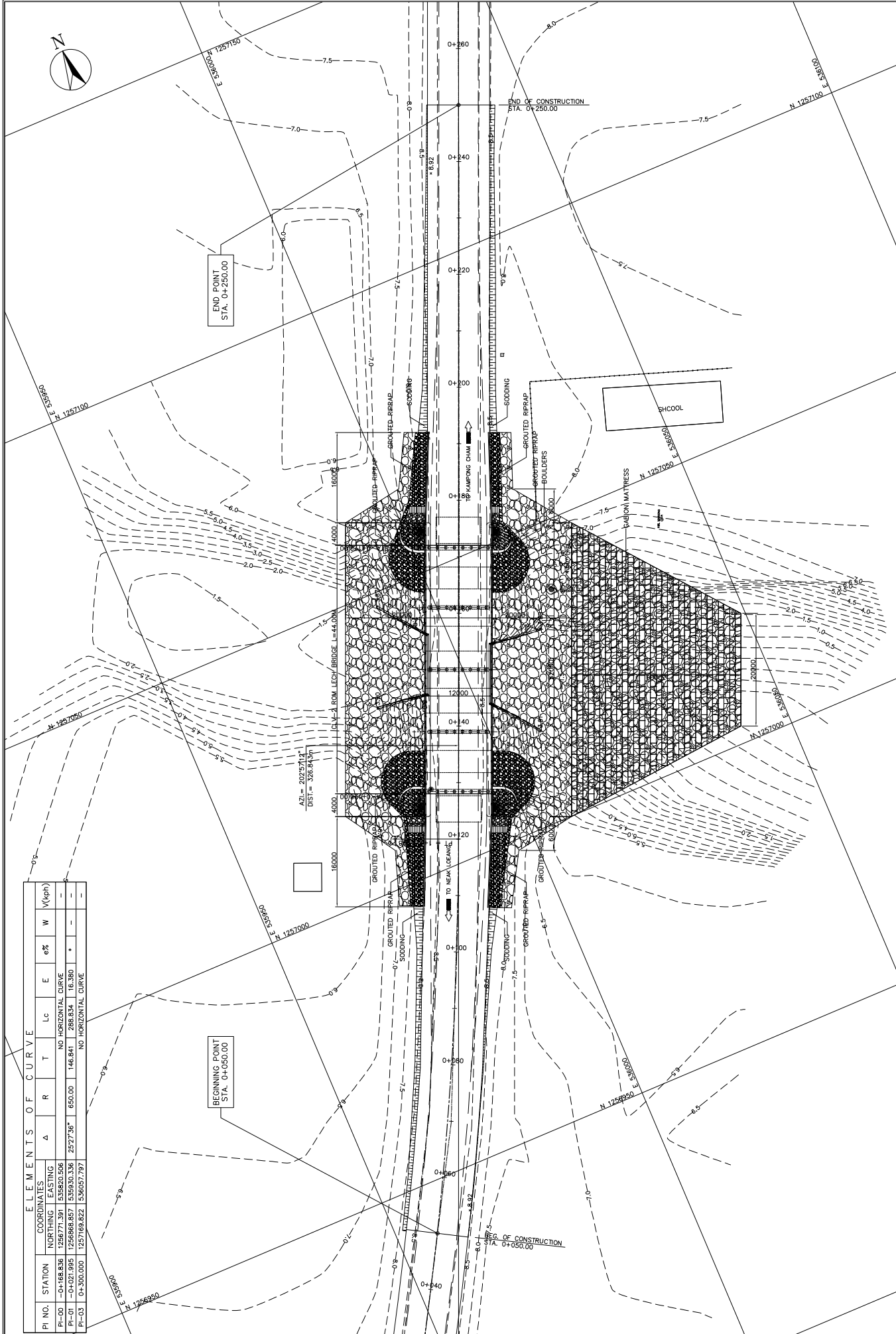
---

# CLV-2 ROM LECH BRIDGE

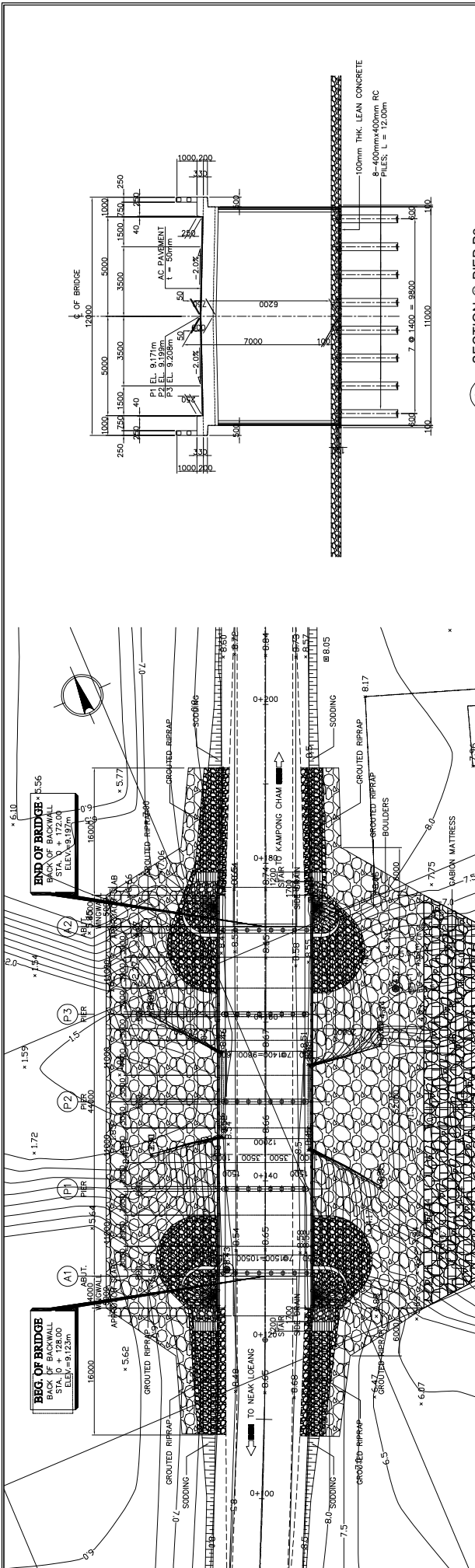
---



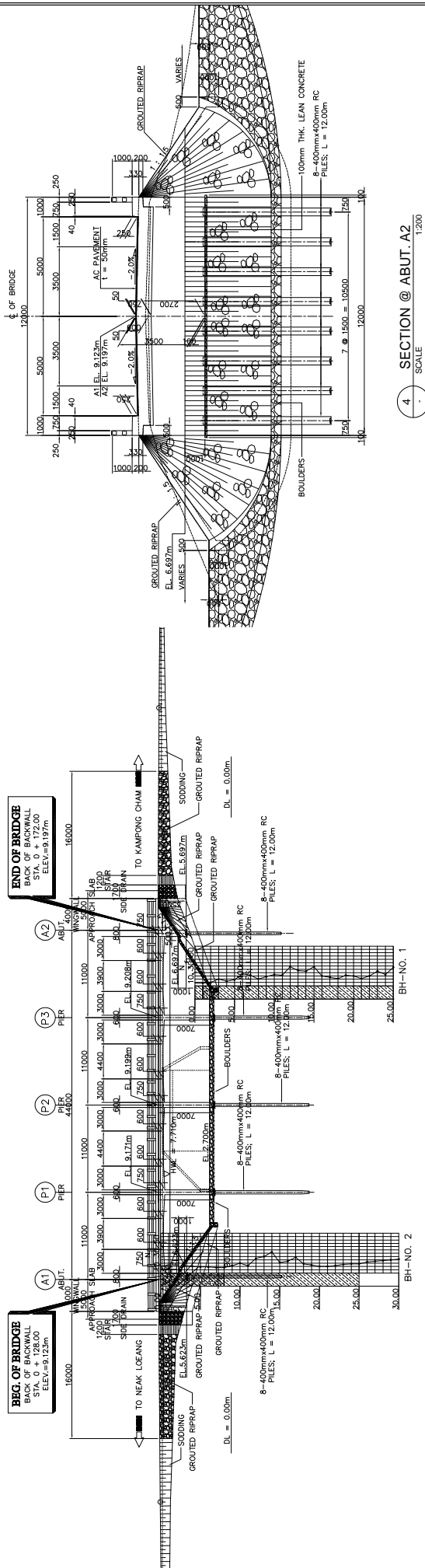
ELEMENTS OF CURVE										
PI NO.	STATION	COORDINATES	Δ	R	T	Lc	E	e%	W	V(kph)
PI-00	-0+168.836	NORTHING 1256771.391 EASTING 5358250.506				NO HORIZONTAL CURVE				
PI-01	-0+021.995	NORTHING 1256688.857 EASTING 5359330.336	25277.96°	650.00	146.841	288.834	16.380	*		
PI-03	0+300.000	NORTHING 1257169.822 EASTING 536057.797				NO HORIZONTAL CURVE				



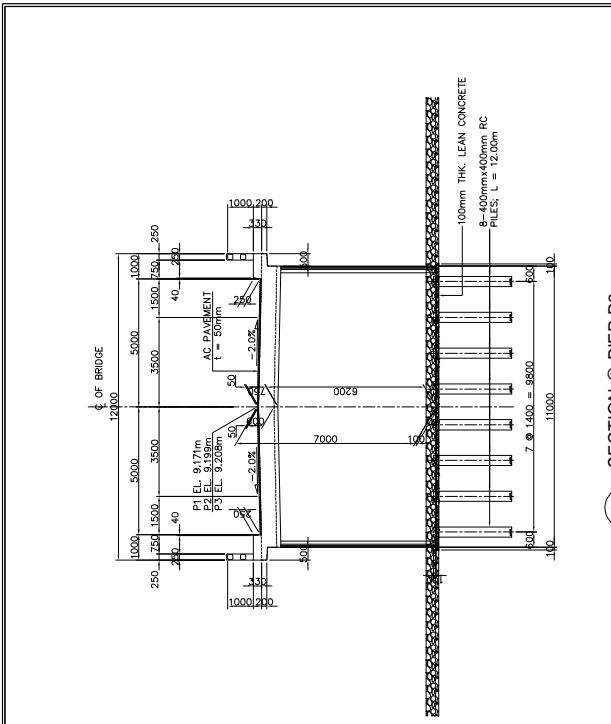
MINISTRY OF PUBLIC WORKS AND TRANSPORT (MPWT)	THE PROJECT FOR FLOOD DISASTER REHABILITATION AND MITIGATION IN THE KINGDOM OF CAMBODIA	JAPAN INTERNATIONAL COOPERATION AGENCY KATAHIRA & ENGINEERS INTERNATIONAL	TITLE: CLV-2 ROM LECH BRIDGE GENERAL SITE PLAN	SCALE	8 - 1
				1:600	Sheet No.



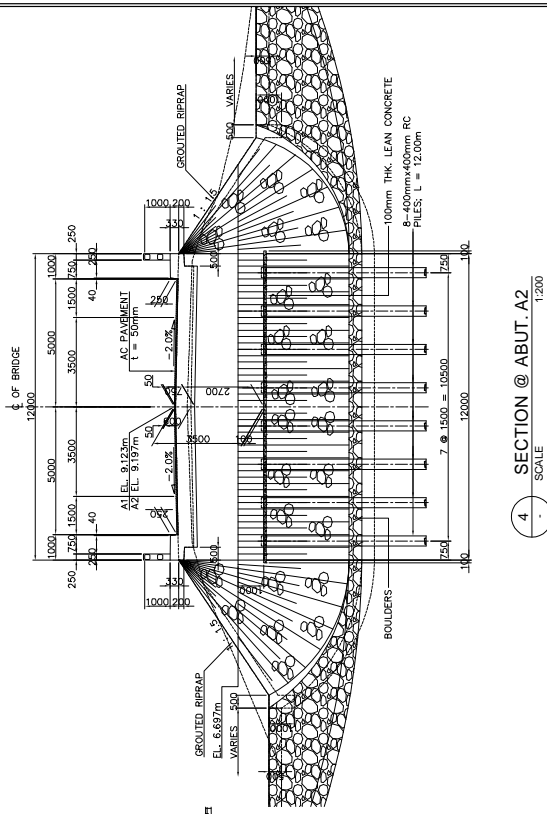
1 GENERAL PLAN  
SCALE 1:500



2 GENERAL ELEVATION  
SCALE 1:500

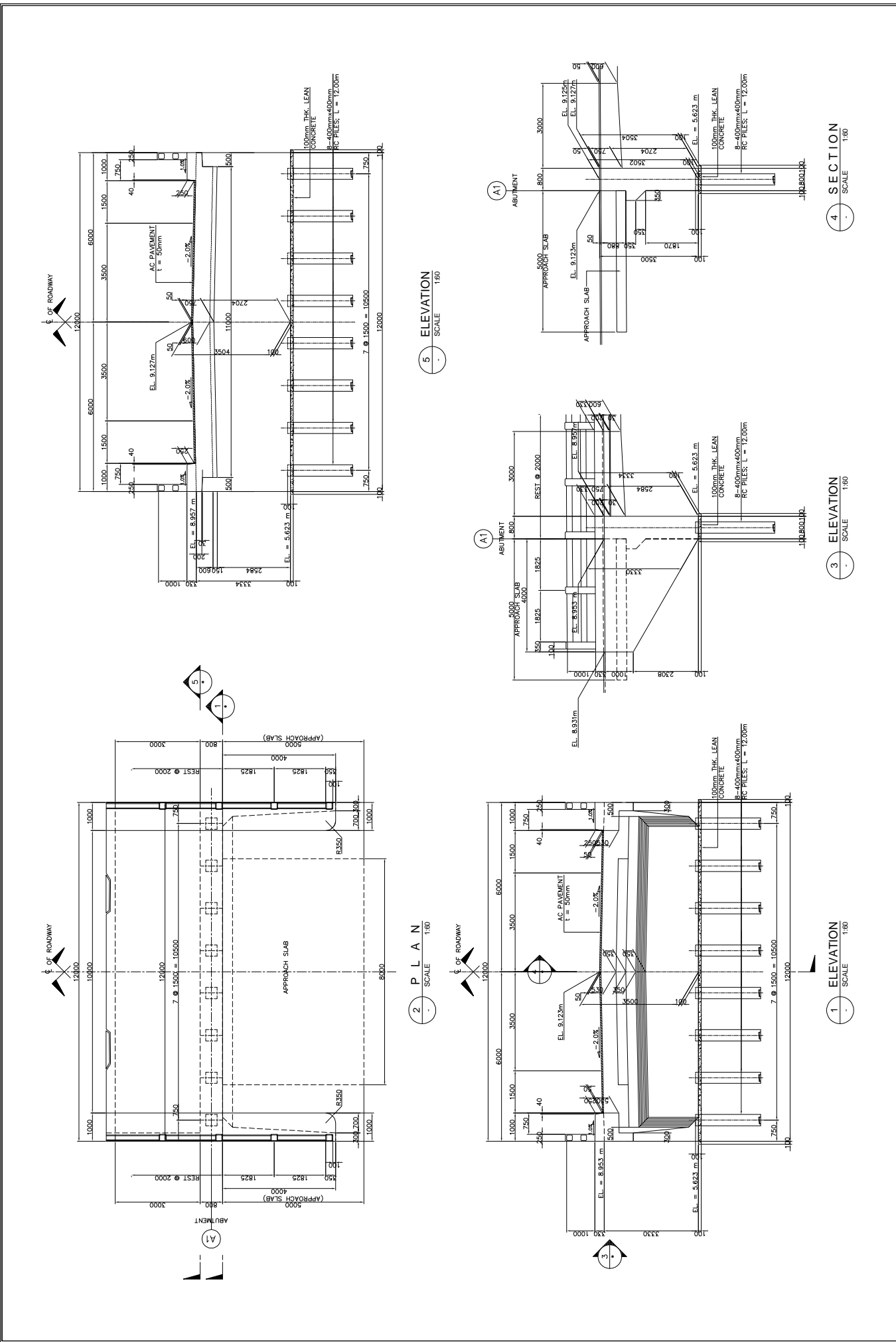


3 SECTION @ PIER P2  
SCALE 1:200



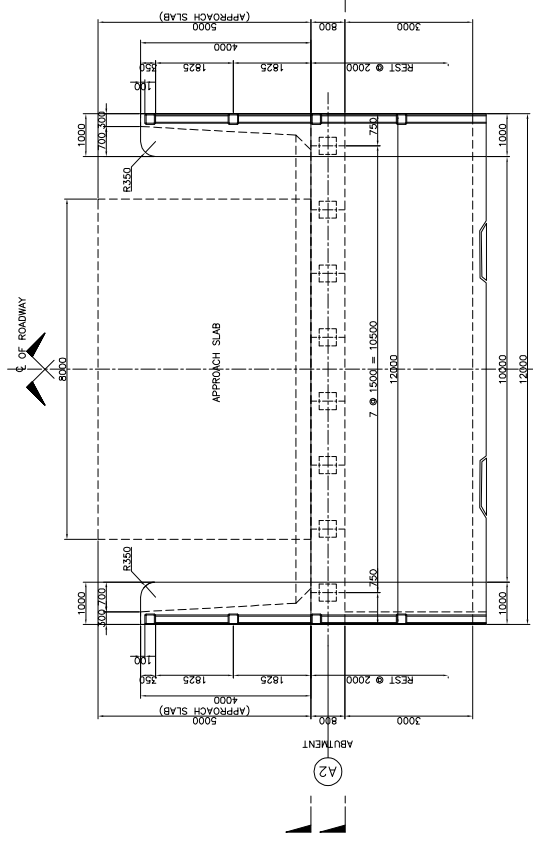
4 SECTION @ ABUT. A2  
SCALE 1:200

MINISTRY OF PUBLIC WORKS AND TRANSPORT (MPWT)	THE PROJECT FOR FLOOD DISASTER REHABILITATION AND MITIGATION IN THE KINGDOM OF CAMBODIA	JAPAN INTERNATIONAL COOPERATION AGENCY KATAHIRA & ENGINEERS INTERNATIONAL	TITLE: CLV-2 ROM LECH BRIDGE GENERAL VIEW	SCALE	Drawing No.
				AS SHOWN	8-2
					Sheet No.

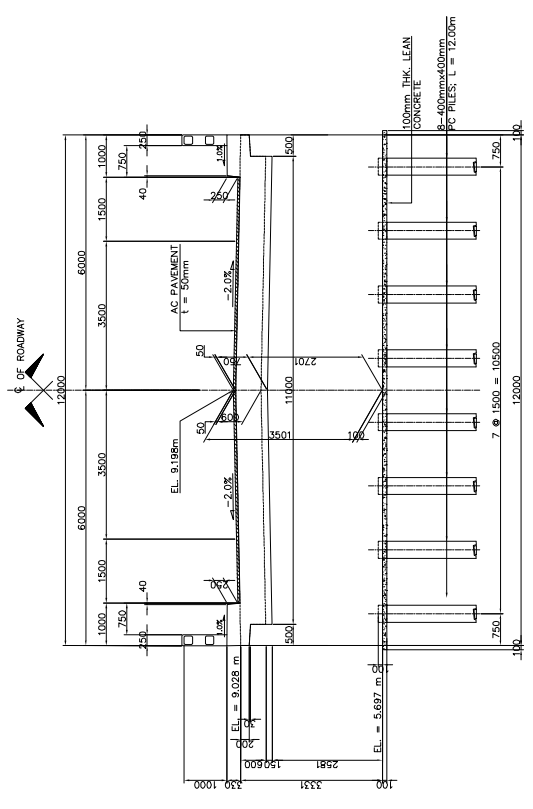


<p>MINISTRY OF PUBLIC WORKS AND TRANSPORT (MPWT)</p>	<p>THE PROJECT FOR FLOOD DISASTER REHABILITATION AND MITIGATION IN THE KINGDOM OF CAMBODIA</p>	<p>JAPAN INTERNATIONAL COOPERATION AGENCY KATAHIRA &amp; ENGINEERS INTERNATIONAL</p>	<p>TITLE: CLV-2 ROM LECH BRIDGE SUBSTRUCTURE STRUCTURAL DIMENSION (ABUT. A1)</p>	<p>SCALE AS SHOWN</p>	<p>Drawing No. 8-3 Sheet No.</p>
--	--	--	--	-----------------------	--------------------------------------

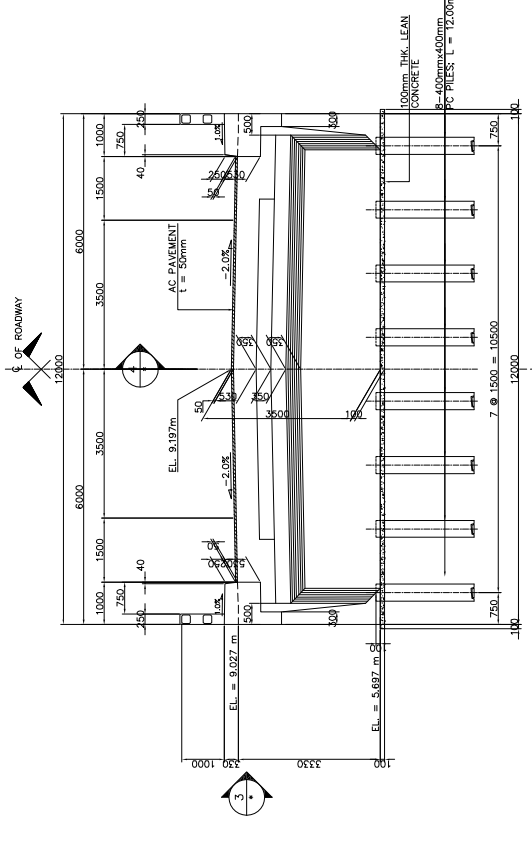




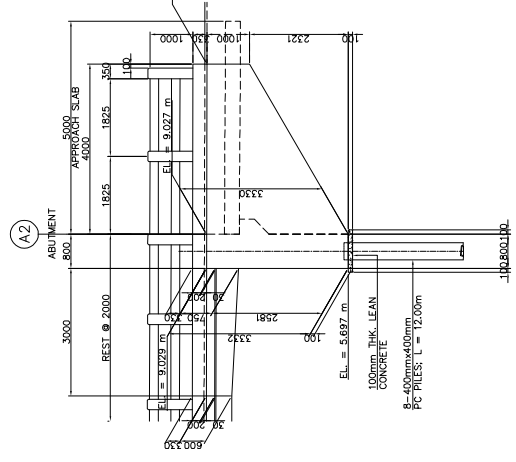
2 PLAN SCALE 1:60



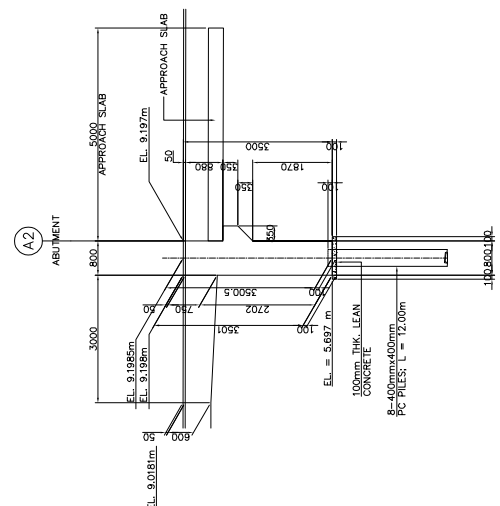
5 ELEVATION SCALE 1:60



1 ELEVATION SCALE 1:60



3 ELEVATION SCALE 1:60



4 SECTION SCALE 1:60

MINISTRY OF PUBLIC WORKS AND TRANSPORT (MPWT)	THE PROJECT FOR FLOOD DISASTER REHABILITATION AND MITIGATION IN THE KINGDOM OF CAMBODIA	JAPAN INTERNATIONAL COOPERATION AGENCY KATAHIRA & ENGINEERS INTERNATIONAL	TITLE : CLV-2 ROM LECH BRIDGE SUBSTRUCTURE STRUCTURAL DIMENSION (ABUT. A2)	SCALE	Drawing No.
				AS SHOWN	
					Sheet No.

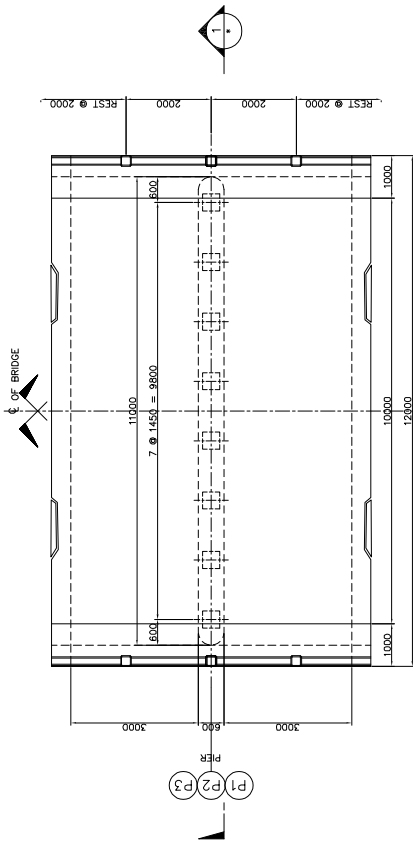
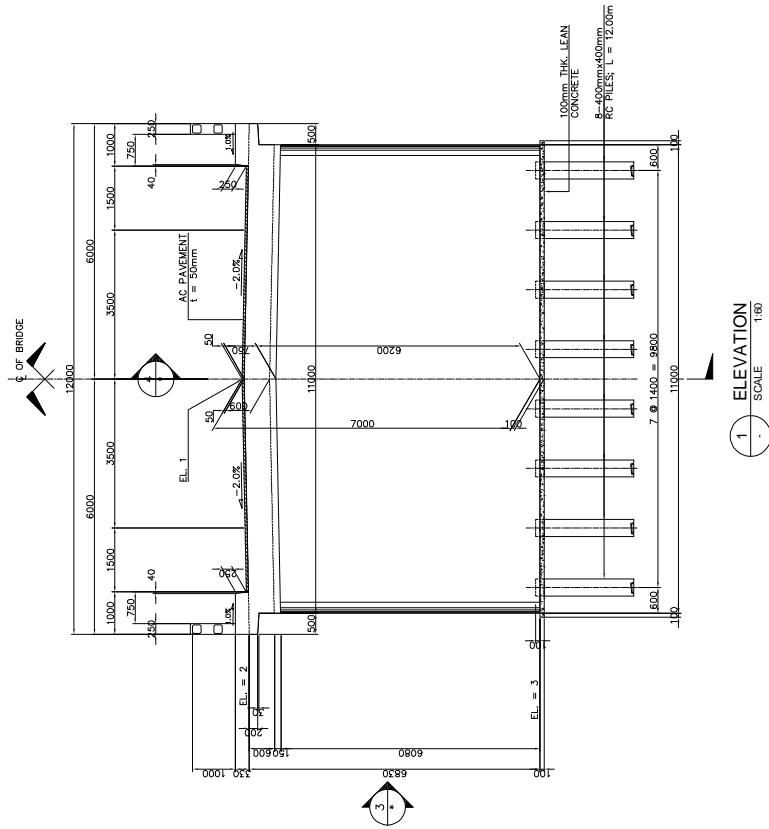


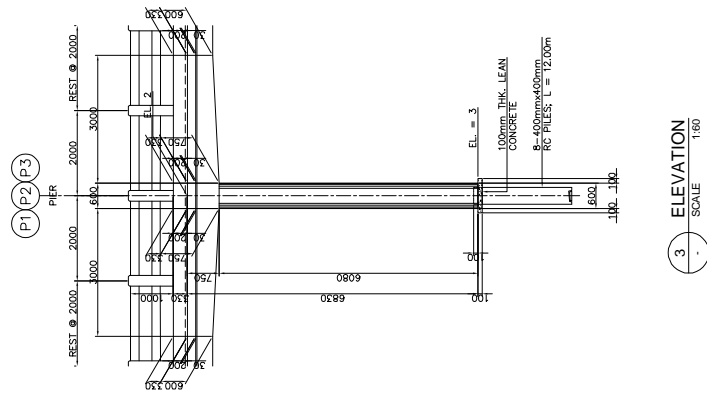
TABLE OF ELEVATIONS

LOCATION	EL. 1	EL. 2	EL. 3
PIER 1	9.171m	9.001m	2.171m
PIER 2	9.199m	9.029m	2.199m
PIER 3	9.208m	9.038m	2.208m

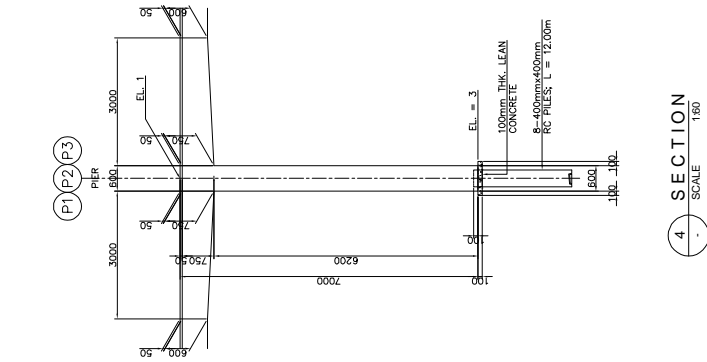
2 PLAN SCALE 1:60



1 ELEVATION SCALE 1:60



3 ELEVATION SCALE 1:60



4 SECTION SCALE 1:60

MINISTRY OF PUBLIC WORKS AND TRANSPORT (MPWT)

THE PROJECT FOR FLOOD DISASTER REHABILITATION AND MITIGATION IN THE KINGDOM OF CAMBODIA

JAPAN INTERNATIONAL COOPERATION AGENCY KATAHIRA & ENGINEERS INTERNATIONAL

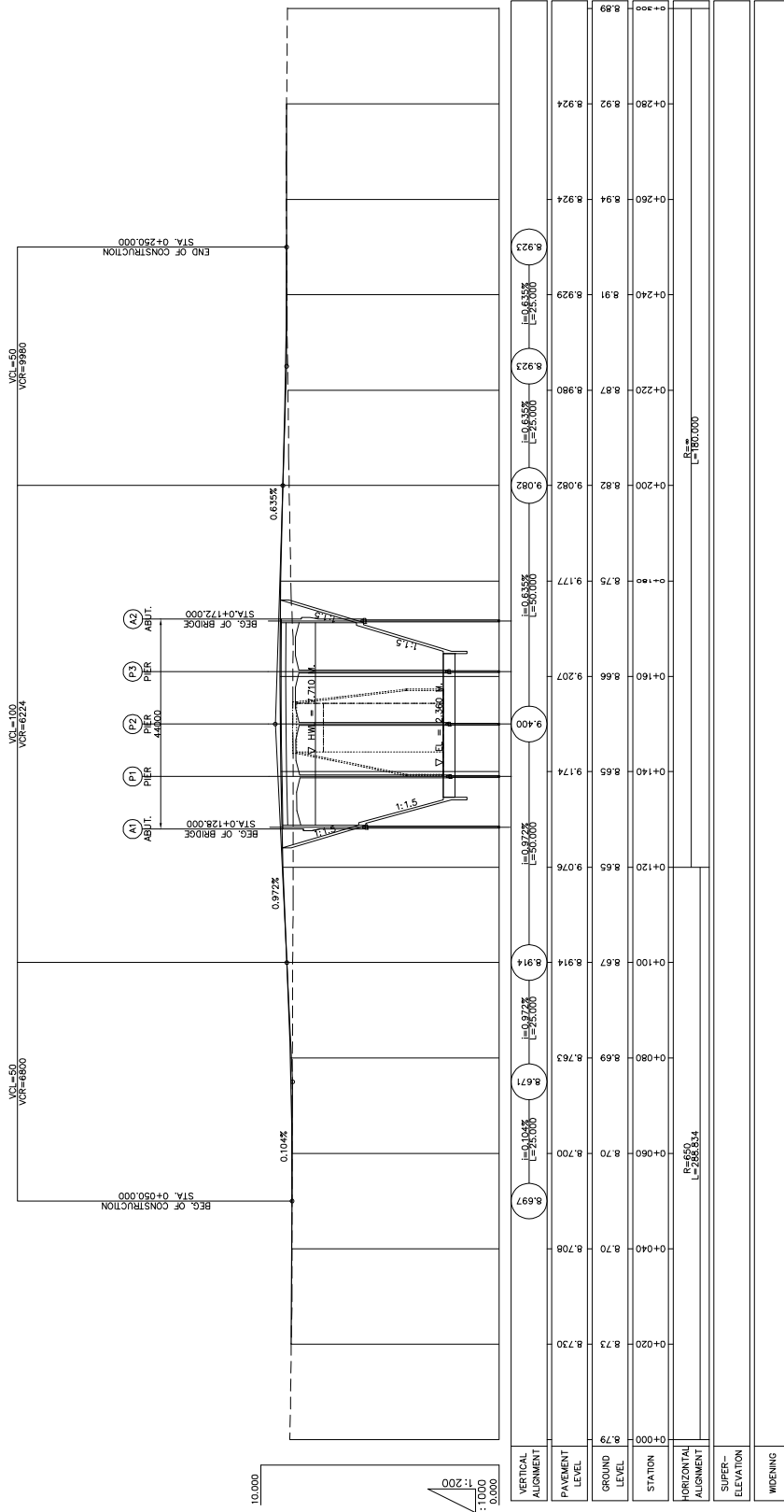
TITLE: CLV-2 ROM LECH BRIDGE SUBSTRUCTURE STRUCTURAL DIMENSION (PIER P1, P2 & P3)

SCALE AS SHOWN

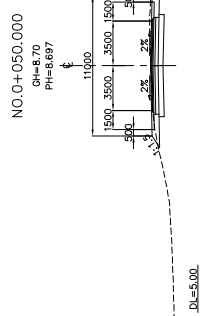
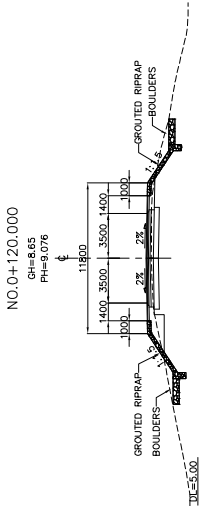
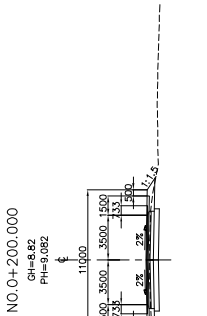
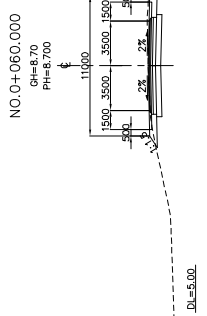
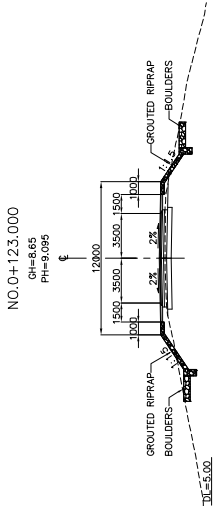
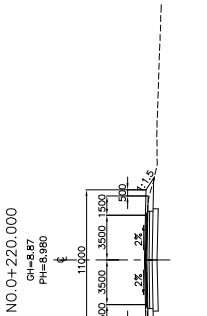
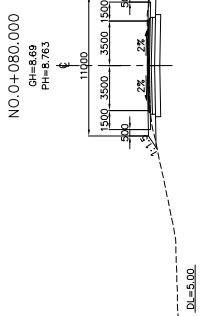
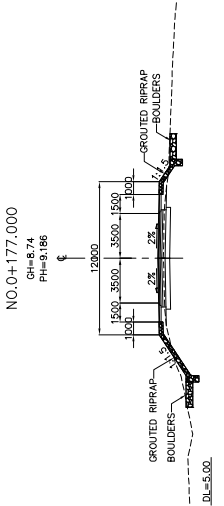
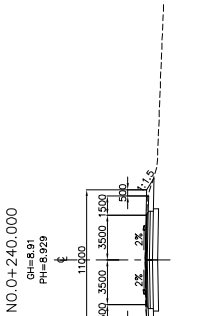
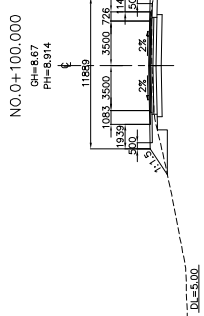
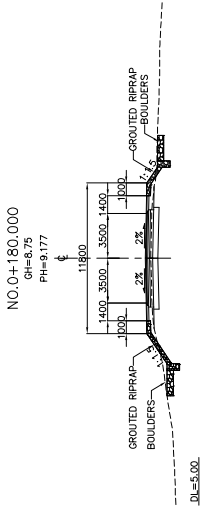
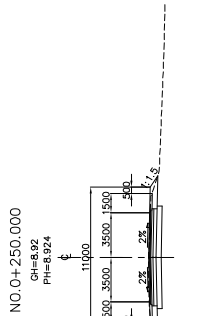
Drawing No.

Sheet No.

8-5



VERTICAL ALIGNMENT	8.97	8.708	8.700	8.673	8.671	8.914	8.67	8.914	8.65	9.076	8.65	9.174	9.400	9.207	8.66	8.75	9.082	8.82	9.082	8.980	8.87	8.929	8.91	8.924	8.94	8.924	8.92	8.89
PAVEMENT LEVEL	8.97	8.708	8.700	8.673	8.671	8.914	8.67	8.914	8.65	9.076	8.65	9.174	9.400	9.207	8.66	8.75	9.082	8.82	9.082	8.980	8.87	8.929	8.91	8.924	8.94	8.924	8.92	8.89
GROUND LEVEL	8.79	8.70	8.70	8.69	8.67	8.67	8.67	8.67	8.65	8.65	8.65	8.65	8.65	8.66	8.66	8.66	8.66	8.66	8.66	8.66	8.66	8.66	8.66	8.66	8.66	8.66	8.66	8.66
STATION	0+000	0+020	0+040	0+060	0+080	0+100	0+120	0+140	0+160	0+180	0+200	0+220	0+240	0+260	0+280	0+300												
HORIZONTAL ALIGNMENT	P=650, L=288.634																											
SUPER-ELEVATION	L=180.000																											
WIDENING																												

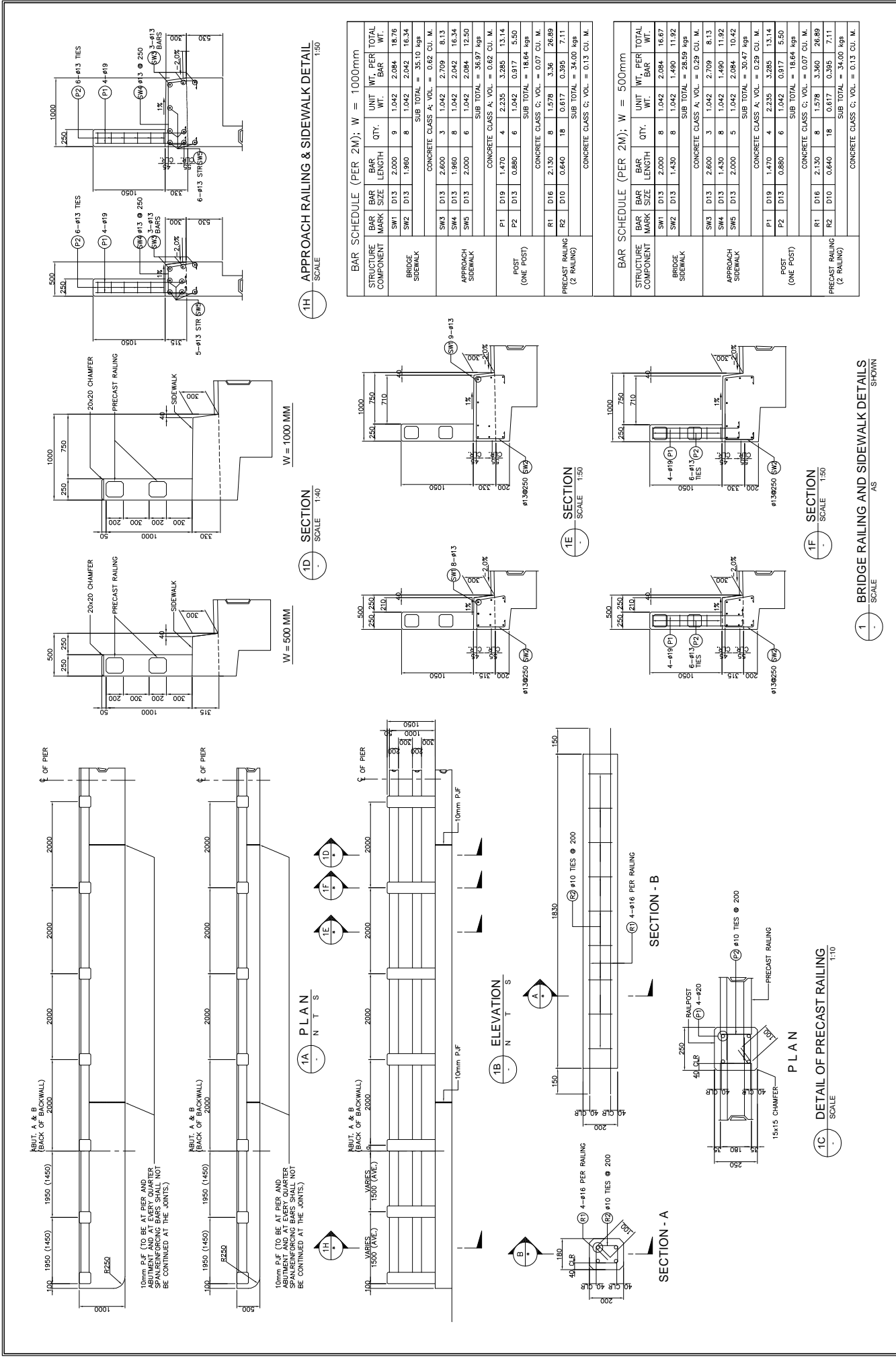


MINISTRY OF PUBLIC WORKS AND TRANSPORT (MPWT)	THE PROJECT FOR FLOOD DISASTER REHABILITATION AND MITIGATION IN THE KINGDOM OF CAMBODIA	JAPAN INTERNATIONAL COOPERATION AGENCY KATAHIRA & ENGINEERS INTERNATIONAL	TITLE: CLV-2 ROM LECH BRIDGE APPROACH ROAD CROSS SECTIONS	SCALE 1 : 400	Drawing No. 8 - 7
					Sheet No.

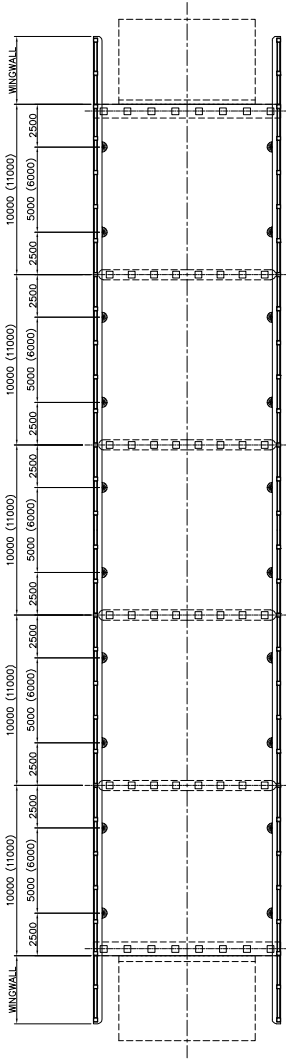
---

# DETAILS OF STANDARD STRUCTURES

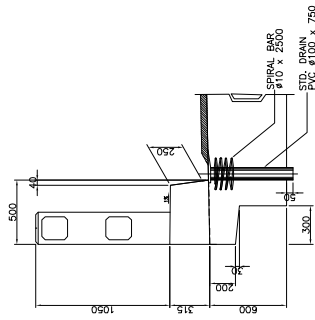
---



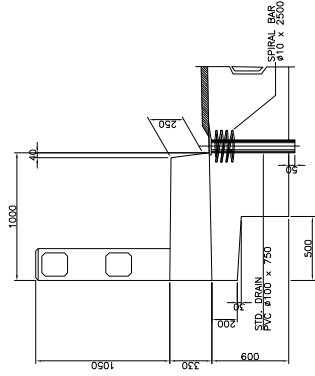
MINISTRY OF PUBLIC WORKS AND TRANSPORT (MPWT)	THE PROJECT FOR FLOOD DISASTER REHABILITATION AND MITIGATION IN THE KINGDOM OF CAMBODIA	JAPAN INTERNATIONAL COOPERATION AGENCY KATAHIRA & ENGINEERS INTERNATIONAL	STANDARD DRAWINGS	Drawing No. <b>9-1</b>
			TYPICAL RAILING AND SIDEWALK DETAILS	
TITLE:			SCALE	
			AS SHOWN	



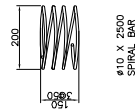
2 KEY PLAN  
SCALE 1:150



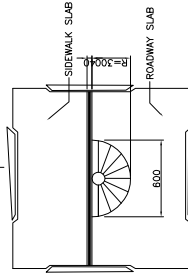
1C SECTION (FLAT SLAB, 0.50m SIDEWALK)  
SCALE 1:20



1C SECTION (FLAT SLAB, 1.00m SIDEWALK)  
SCALE 1:20



φ10 X 2500  
SPIRAL BAR



1A SECTION  
SCALE 1:20

1 TYPICAL DRAIN DETAILS  
SCALE 1:20

BRIDGE NO.	BRIDGE NAME	BRIDGE LENGTH	SPAN LAYOUT	NO. OF DECK, DRAIN
BR-4	ASAL BEUJING	33.00m	3 x 11m	12
BR-5	KATE BEUJING	40.00m	4 x 10m	6
BR-7	SOM RUTHOR II	45.00m	4 x 11m	16
BR-8	MESON	50.00m	5 x 10m	20
BR-9	TKOV	44.00m	4 x 11m	16
CUV-1	TKOV II	20.00m	2 x 10m	8
BR-11	EK REAM	33.00m	3 x 11m	12
CUV-2	ROM LECH	44.00m	4 x 11m	16

MINISTRY OF  
PUBLIC WORKS AND TRANSPORT  
(MPWT)

THE PROJECT FOR FLOOD  
DISASTER REHABILITATION AND  
MITIGATION  
IN THE KINGDOM OF CAMBODIA

**JAPAN INTERNATIONAL COOPERATION AGENCY**  
KATAHIRA & ENGINEERS INTERNATIONAL

TITLE:  
STANDARD DRAWINGS  
TYPICAL DECK DRAIN DETAILS

SCALE  
AS SHOWN

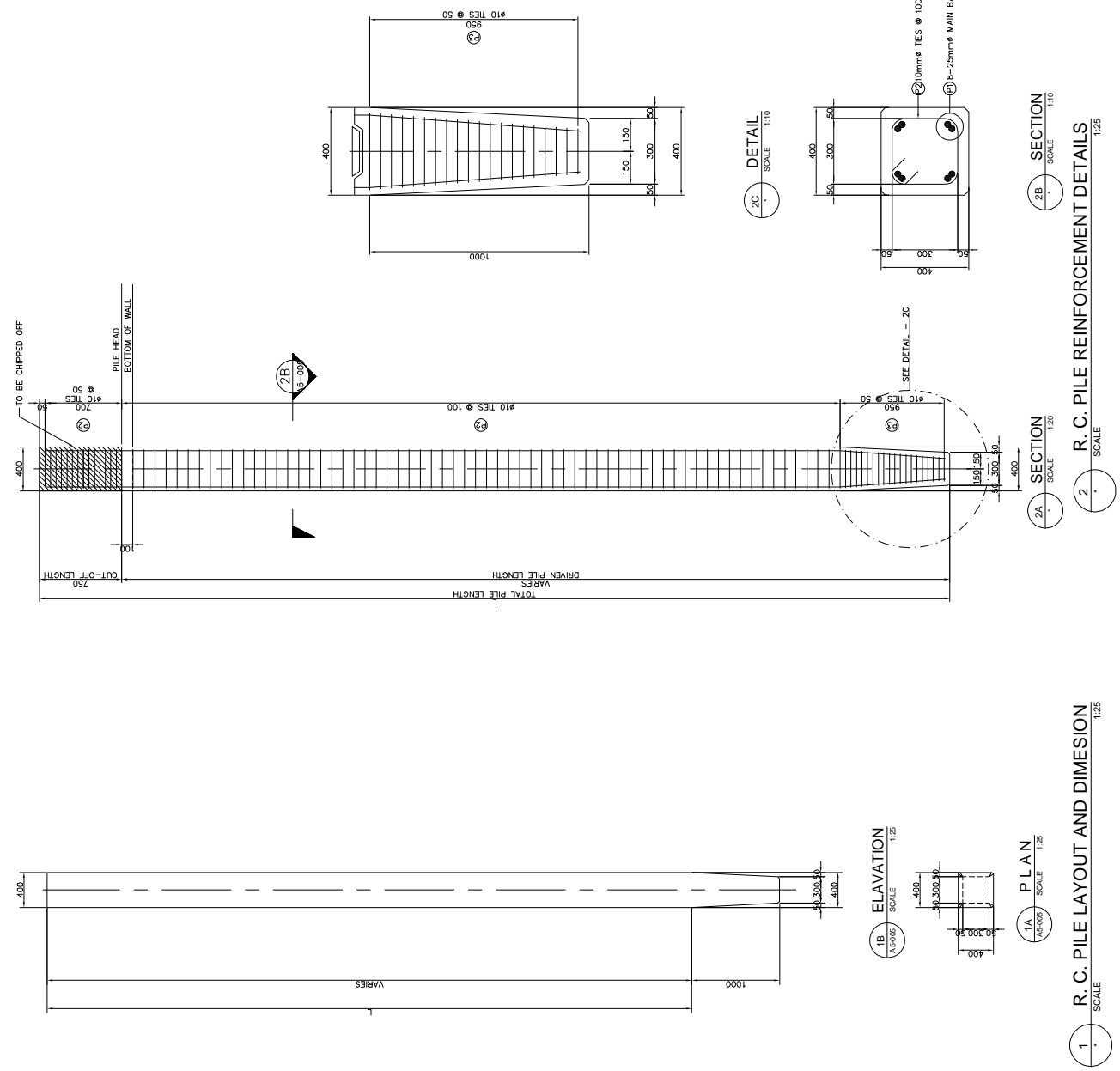
Drawing No.

9 - 2

Sheet No.

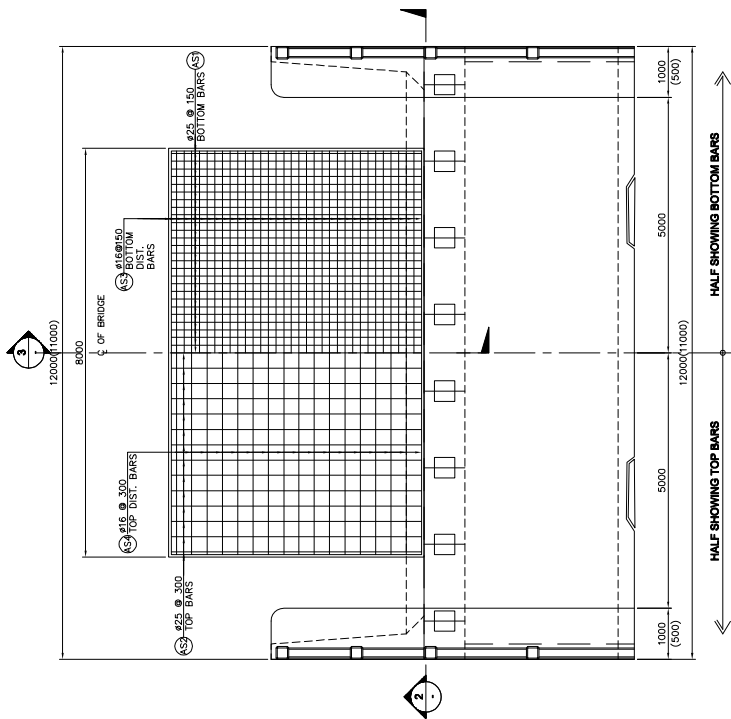
BRIDGE NAME	LOCATION	TOTAL PILE LENGTH	NO. OF PILES
BR. 4 KBAL BOEUNG	ABUT. A1	12.00m.	8
	PIERS, P1, P2	12.00m.	8
	ABUT. A2	12.00m.	8
BR. 5 SNAKE	ABUT. A1	12.00m.	8
	PIERS, P1, P2 & P3	15.00m.	8
	ABUT. A2	12.00m.	8
BR. 7 SAM PUTHOR II	ABUT. A1	12.00m.	8
	PIERS, P1, P2 & P3	12.00m.	8
	ABUT. A2	12.00m.	8
BR. 8 MEBON	ABUT. A1	12.00m.	8
	PIERS, P1, P2, P3 & P4	12.00m.	8
	ABUT. A2	12.00m.	8
BR. 9 TKOV I	ABUT. A1	12.00m.	8
	PIERS, P1, P2 & P3	12.00m.	8
	ABUT. A2	12.00m.	8
CLV-1 TKOV II	PIERS, P1	12.00m.	8
	ABUT. A2	12.00m.	8
	ABUT. A1	12.00m.	8
BR. 11 EK REAM	ABUT. A1	12.00m.	8
	PIERS, P1, P2	12.00m.	8
	ABUT. A2	12.00m.	8
CLV-2 ROM LECH	ABUT. A1	12.00m.	8
	PIERS, P1, P2 & P3	12.00m.	8
	ABUT. A2	12.00m.	8

PILE LENGTH	BAR MARK	BAR SIZE	BAR LENGTH	QTY.	UNIT	WT. PER BAR	TOTAL WT.
L = 12.00m	P1	Ø25	12.000	8	3.853	48.236	388.89
	P2	Ø10	1.400	117	0.617	0.864	101.06
	P3	Ø10	1.200	20	0.617	0.740	14.81
SUB TOTAL =					485.76	Kg	
CONCRETE CLASS E. VOL. =					1.88	CU. M.	
L = 15.00m	P1	Ø25	15.000	8	3.853	57.795	482.36
	P2	Ø10	1.400	147	0.617	0.864	126.98
	P3	Ø10	1.200	20	0.617	0.740	14.81
SUB TOTAL =					604.15	Kg	
CONCRETE CLASS E. VOL. =					2.36	CU. M.	

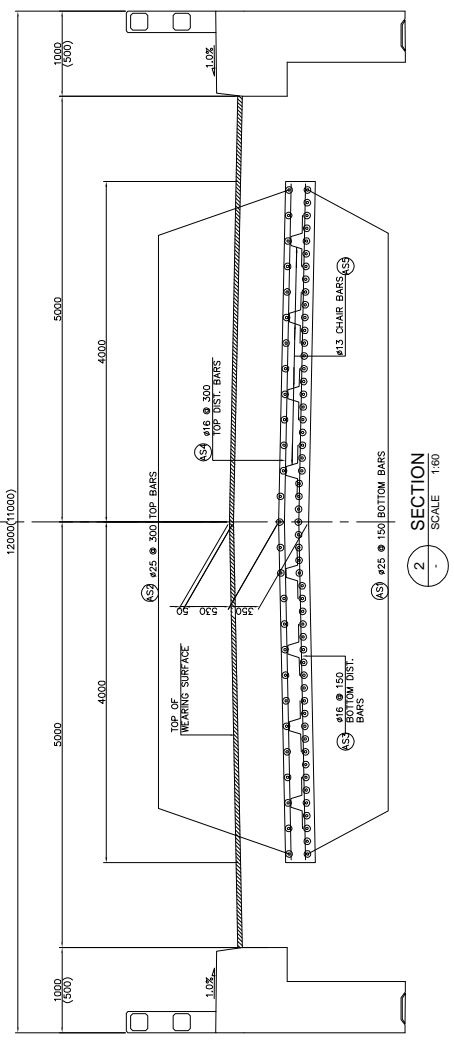


MINISTRY OF PUBLIC WORKS AND TRANSPORT (MPWT)	THE PROJECT FOR FLOOD DISASTER REHABILITATION AND MITIGATION IN THE KINGDOM OF CAMBODIA	JAPAN INTERNATIONAL COOPERATION AGENCY KATAHIRA & ENGINEERS INTERNATIONAL	STANDARD DRAWINGS	SCALE AS SHOWN	Drawing No. 9-3
			RC PILE DETAILS		

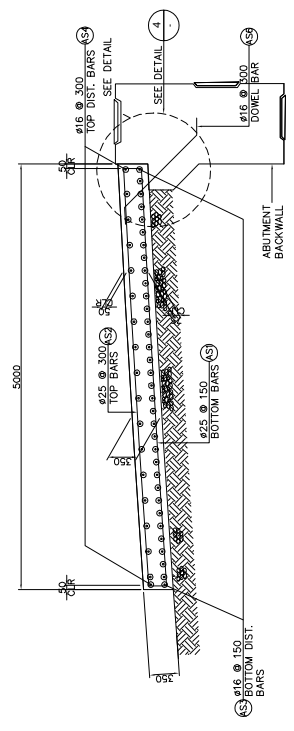




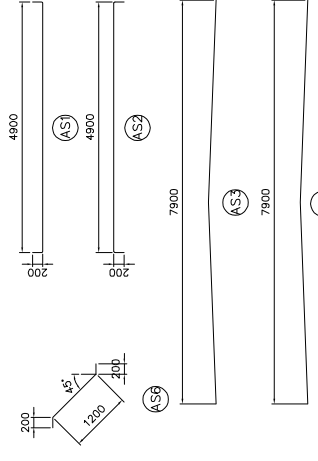
1 PLAN SCALE 1:100



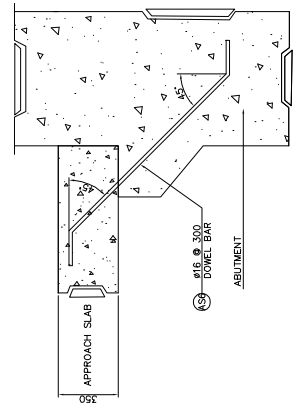
2 SECTION SCALE 1:80



3 SECTION SCALE 1:80



5 BAR BENDING DIAGRAM SCALE NOT TO



4 DETAIL SCALE 1:30

QUANTITY PER APPROACH SLAB					
BAR MARK	BAR SIZE	BAR LENGTH	QTY.	UNIT WT. PER BAR	TOTAL WT.
AS1	25	5,300	53	3,853	20,421
AS2	25	5,300	27	3,853	20,421
AS3	16	7,800	34	1,578	12,466
AS4	16	7,800	18	1,578	12,466
AS5	13	0,625	32	1,042	0,651
AS6	16	1,600	27	1,578	2,525
				TOTAL	2,370.92 Kgp
CONCRETE VOLUME, CLASS A = 14.00 CU. M.					

MINISTRY OF PUBLIC WORKS AND TRANSPORT (MPWT)

THE PROJECT FOR FLOOD DISASTER REHABILITATION AND MITIGATION IN THE KINGDOM OF CAMBODIA

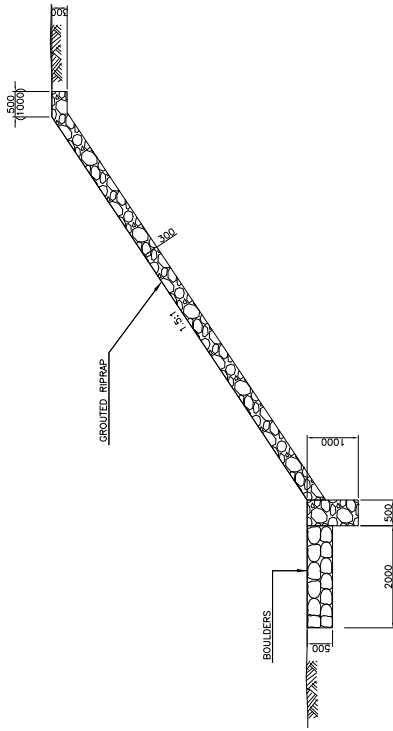
JAPAN INTERNATIONAL COOPERATION AGENCY KATAHIRA & ENGINEERS INTERNATIONAL

STANDARD DRAWINGS TYPICAL APPROACH SLAB DETAILS

SCALE AS SHOWN

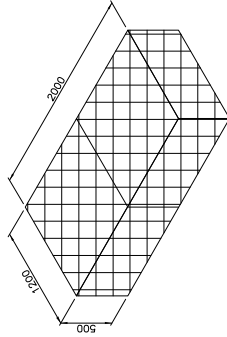
Drawing No. 9-4

Sheet No.



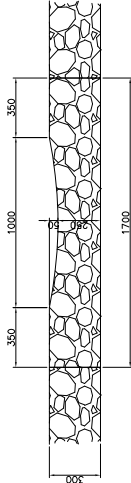
1 GROUTED RIPRAP SLOPE PROTECTION  
SCALE 1:100

NOTE:  
THE MINIMUM SIZE OF BOULDERS  
SHALL BE LARGER THAN 200MM.  
GEOTEXTILE SHALL BE INSTALLED  
BENEATH THE BOULDERS.



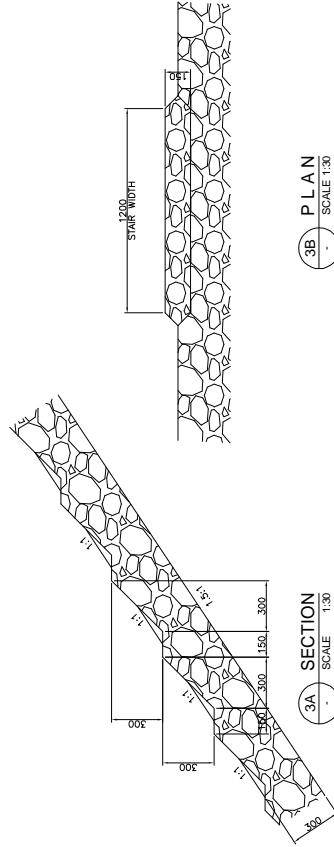
5 GABION MATTRESS  
SCALE NOT TO SCALE

NOTE:  
THE MINIMUM SIZE OF BOULDERS TO BE CONTAINED IN THE GABION SHALL BE  
LARGER THAN 200mm.  
THE WIRE MESH SHALL BE MADE OF GALVANIZED STEEL HAVING MINIMUM SIZE  
OF 3.2MM (3/16 INCH) DIAMETER (U.S. WIRE GAGE NO. 11). THE TENSILE  
STRENGTH OF THE WIRE SHALL BE IN THE RANGE OF 413.7 TO 586.1 MPa  
(60,000 TO 85,000 PSI). THE MINIMUM ZINC COATING OF THE WIRE SHALL BE  
DETERMINED BY TESTS CONDUCTED IN ACCORDANCE WITH AASHTO T 85.



2A SECTION  
SCALE 1:30

2 SIDE DRAIN IN GROUTED RIPRAP  
SCALE AS SHOWN

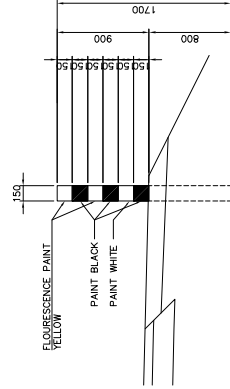


3A SECTION  
SCALE 1:30

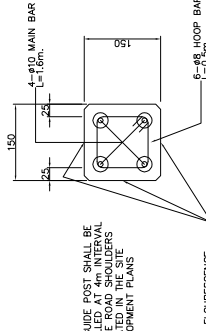
3B PLAN  
SCALE 1:30

3 STAIRS IN GROUTED RIPRAP  
SCALE AS SHOWN

QUANTITY PER GUIDE POST	
CONCRETE CLASS "C"	0.038 m <sup>3</sup>
BAR # 10	3.95 kg
BAR # 8	1.2 kg



4A ELEVATION  
SCALE 1:50



4B SECTION  
SCALE 1:10

NOTE: THE GUIDE POST SHALL BE  
AS SHOWN AND BOULDERS  
INDICATED IN THE SITE  
DEVELOPMENT PLANS

4 GUIDE POST  
SCALE AS SHOWN

MINISTRY OF  
PUBLIC WORKS AND TRANSPORT  
(MPWT)

THE PROJECT FOR FLOOD  
DISASTER REHABILITATION AND  
MITIGATION  
IN THE KINGDOM OF CAMBODIA

JAPAN INTERNATIONAL COOPERATION AGENCY  
KATAHIRA & ENGINEERS INTERNATIONAL

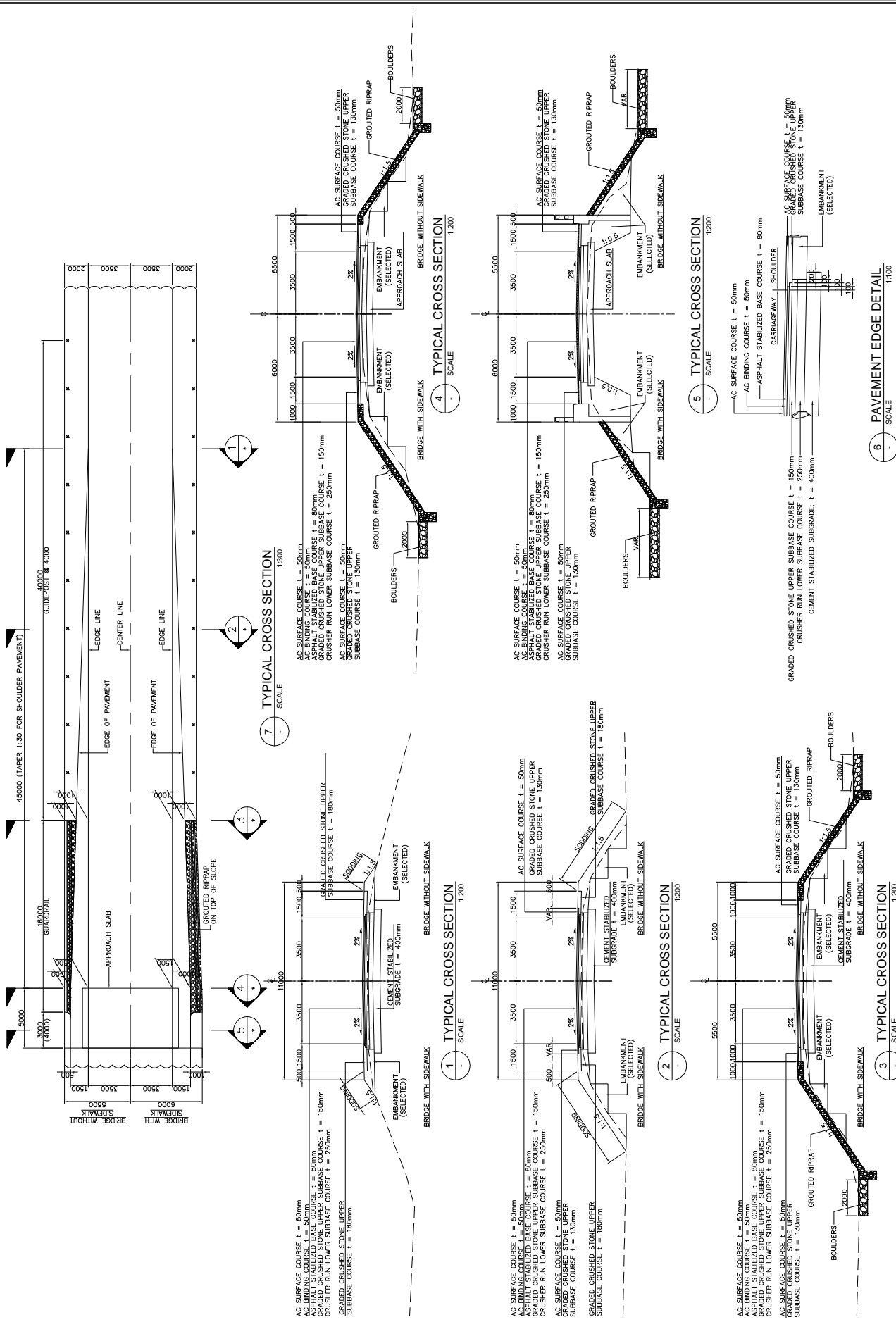
TITLE: STANDARD DRAWINGS  
RIPRAP SLOPE PROTECTION,  
GABION MATTRESS AND  
GUIDE POST DETAILS

SCALE  
AS SHOWN

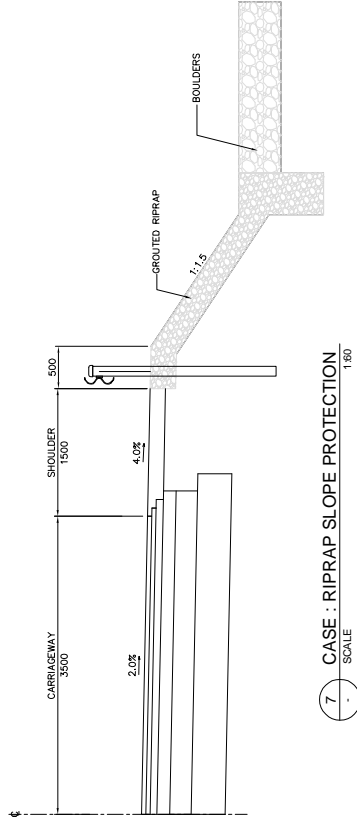
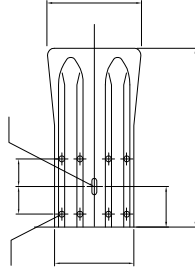
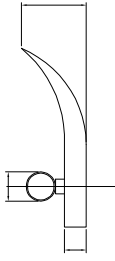
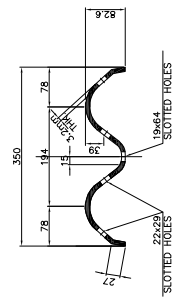
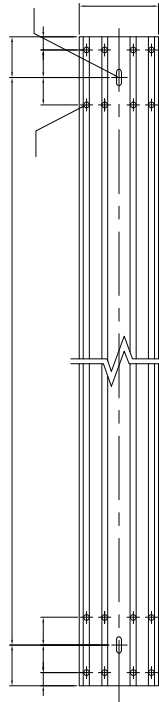
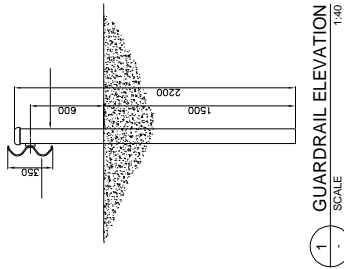
Drawing No.

Sheet No.

9 - 5

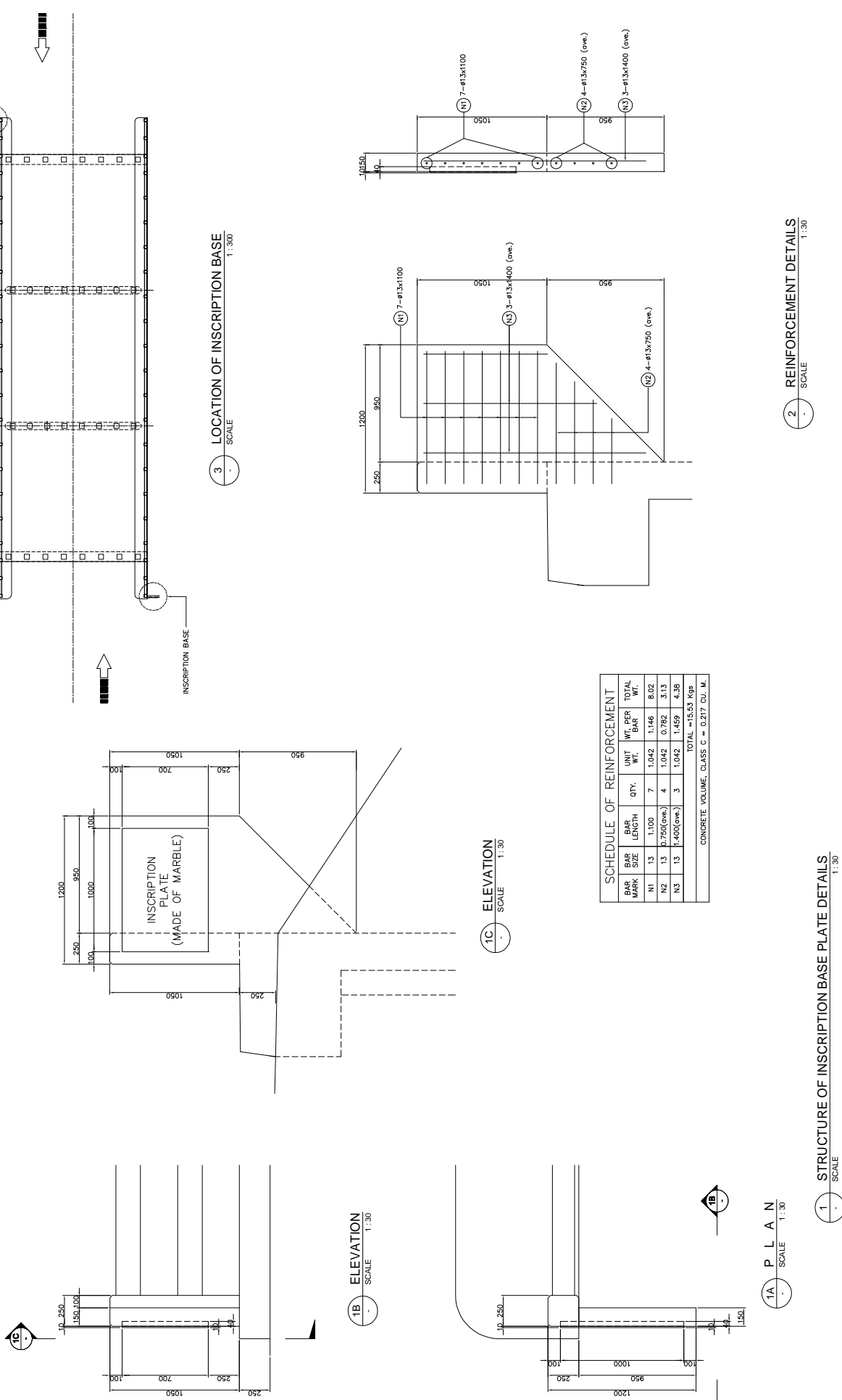


<p>MINISTRY OF PUBLIC WORKS AND TRANSPORT (MPWT)</p>	<p>THE PROJECT FOR FLOOD DISASTER REHABILITATION AND MITIGATION IN THE KINGDOM OF CAMBODIA</p>	<p>JAPAN INTERNATIONAL COOPERATION AGENCY KATAHIRA &amp; ENGINEERS INTERNATIONAL</p>	<p>TITLE: STANDARD DRAWINGS TYPICAL CROSS SECTION OF APPROACH ROAD SECTION</p>	<p>SCALE AS SHOWN</p>	<p>Drawing No. 9-6 Sheet No.</p>
--	--	--	--	-----------------------	--------------------------------------



1. MATERIALS AND WORKMANSHIP FOR METAL BEAM GUARDRAIL SHALL COMPLY TO THE TECHNICAL SPECIFICATIONS OF THIS CONTRACT.
2. ALL DIMENSIONS ARE IN MILLIMETERS UNLESS OTHERWISE INDICATED.
3. ALL NUTS SHALL BE WELDED TO BOLTS AFTER TIGHTENING.
4. STRUCTURAL STEEL SHALL CONFORM TO THE REQUIREMENTS OF AASHTO M180
5. EXACT LOCATION OF GUARDRAILS SHALL BE VERIFIED ON SITE DURING CONSTRUCTION.
6. GUARDRAIL PRODUCTS SIMILAR AND EQUIVALENT TO THIS DRAWING MAY BE ACCEPTED WHEN APPROVED BY THE CONSULTANT.

MINISTRY OF PUBLIC WORKS AND TRANSPORT (MPWT)	THE PROJECT FOR FLOOD DISASTER REHABILITATION AND MITIGATION IN THE KINGDOM OF CAMBODIA	JAPAN INTERNATIONAL COOPERATION AGENCY KATAHIRA & ENGINEERS INTERNATIONAL	TITLE: STANDARD DRAWING STEEL BEAM GUARDRAIL DETAILS	SCALE	AS SHOWN	Drawing No.	9-7
						Sheet No.	



SCHEDULE OF REINFORCEMENT					
BAR MARK	BAR SIZE	BAR LENGTH	QTY.	UNIT WT. BAR	TOTAL WT.
N1	13	1,100	7	1,042	1,146
N2	13	0,750(ave.)	4	1,042	0,762
N3	13	1,400(ave.)	3	1,042	1,459
TOTAL					15,53 Kgr

CONCRETE VOLUME, CLASS C = 0,217 CU. M.

MINISTRY OF PUBLIC WORKS AND TRANSPORT (MPWT)	THE PROJECT FOR FLOOD DISASTER REHABILITATION AND MITIGATION IN THE KINGDOM OF CAMBODIA	JAPAN INTERNATIONAL COOPERATION AGENCY KATAHIRA & ENGINEERS INTERNATIONAL	TITLE:	STANDARD DRAWINGS INSCRIPTION BASE DETAILS	SCALE:	AS SHOWN	Drawing No.	9 - 8
							Sheet No.	