

添付資料-7

土質調査

土質調査(2011年9月、プロジェクトチーム)

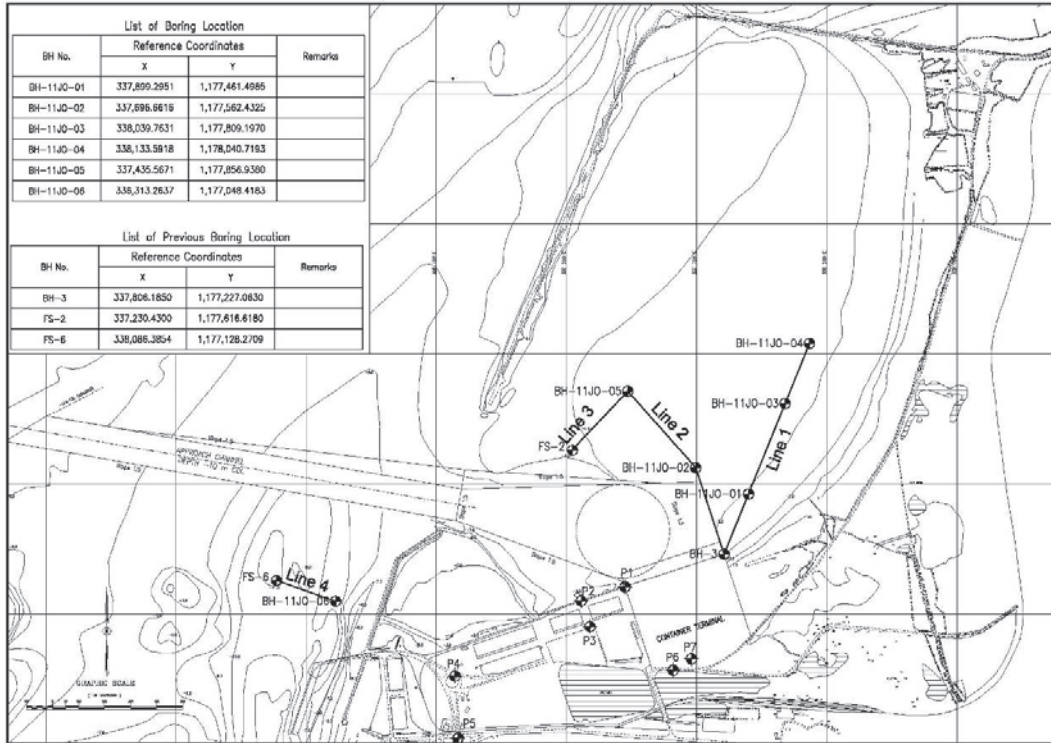


図 A 1-1 ボーリング箇所と土質断面位置図

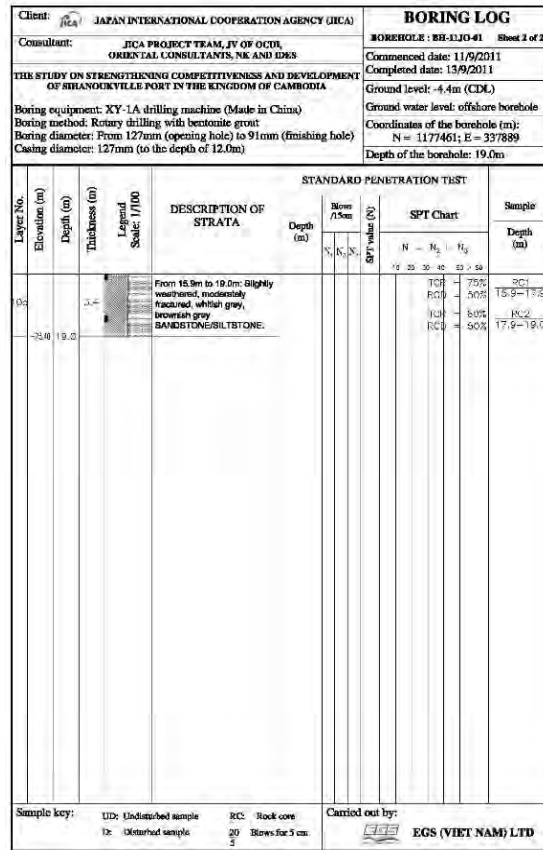
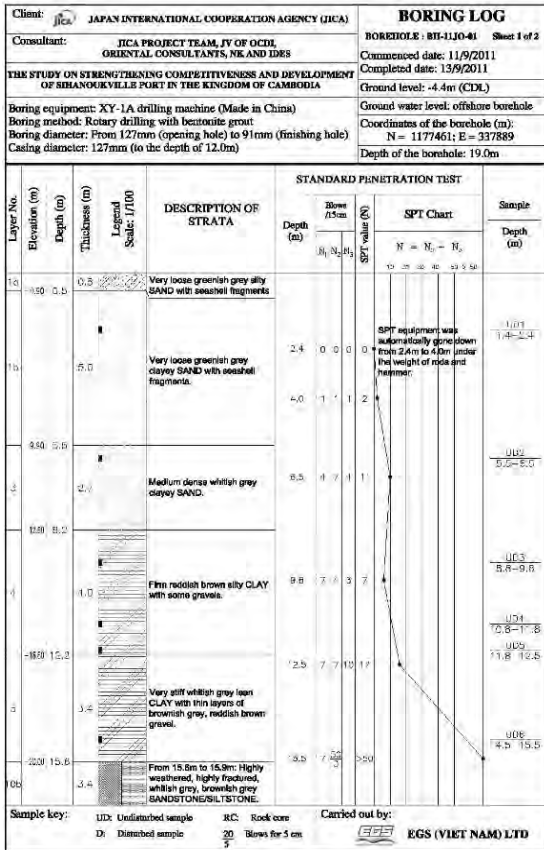


図 A 1-2 BH-11JO-01 柱状図

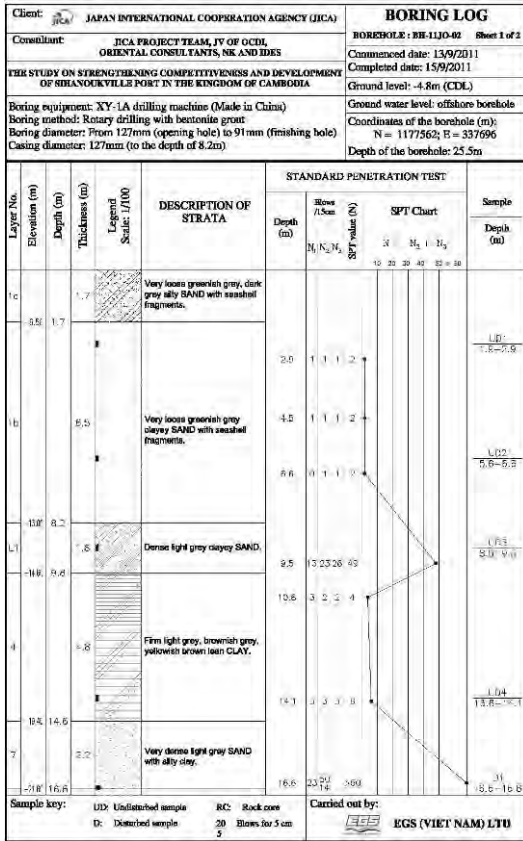


図 A 1-3 BH-11JO-02 柱状図

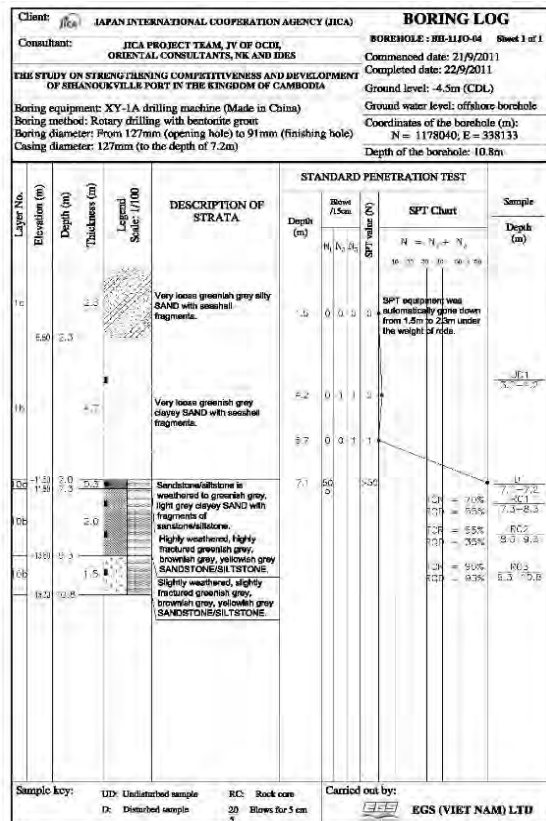
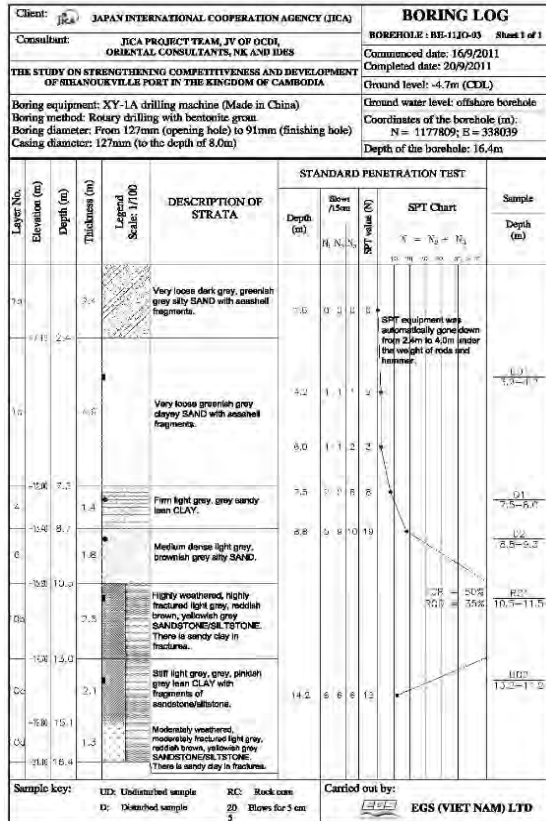
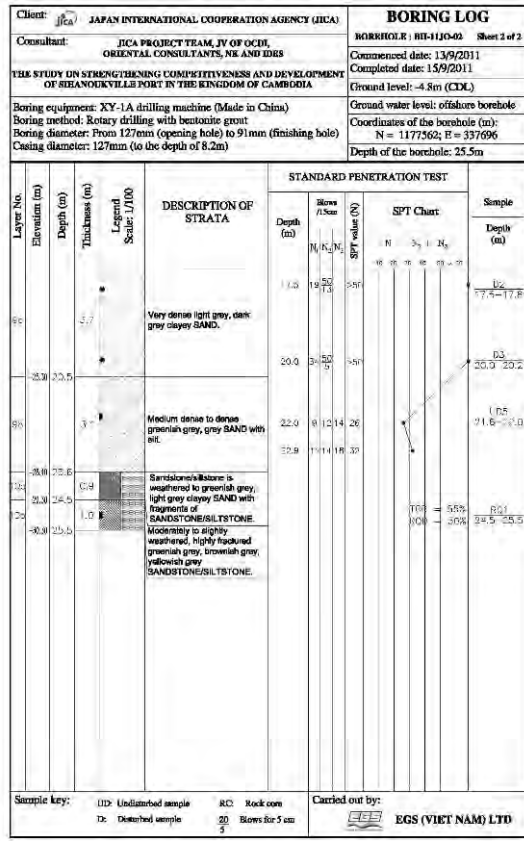


図 A 1-4 BH-11JO-03 および BH-11JO-04 柱状図

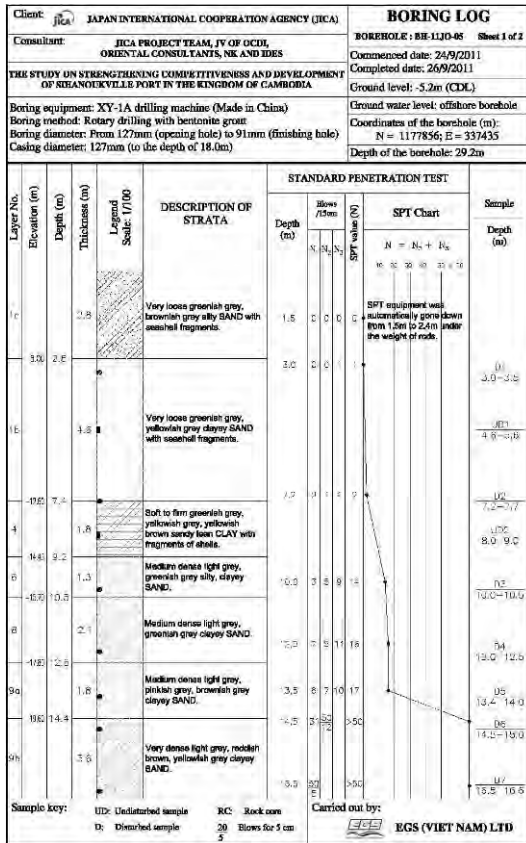


図 A 1-5 BH-11JO-05 柱状図

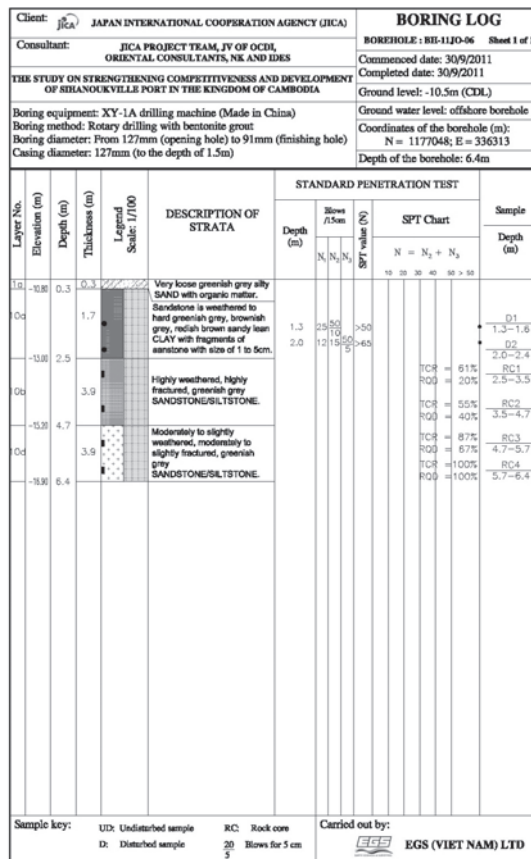
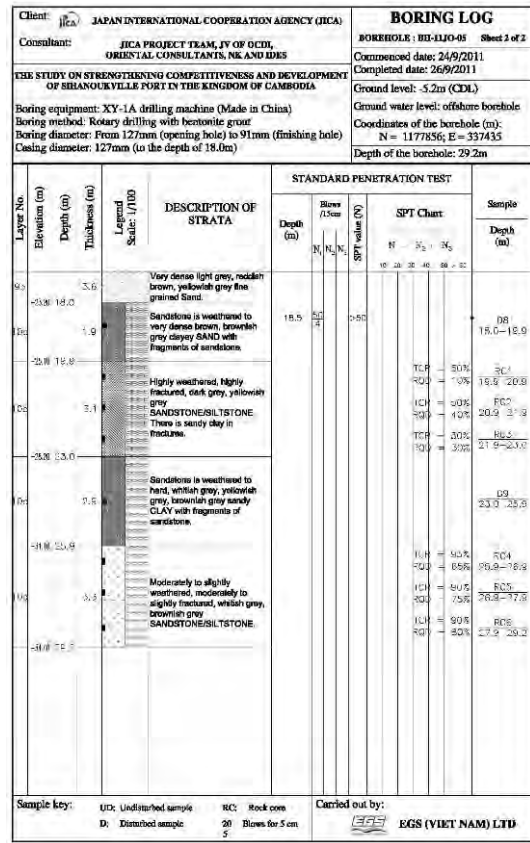


図 A 1-6 BH-11JO-06 柱状図

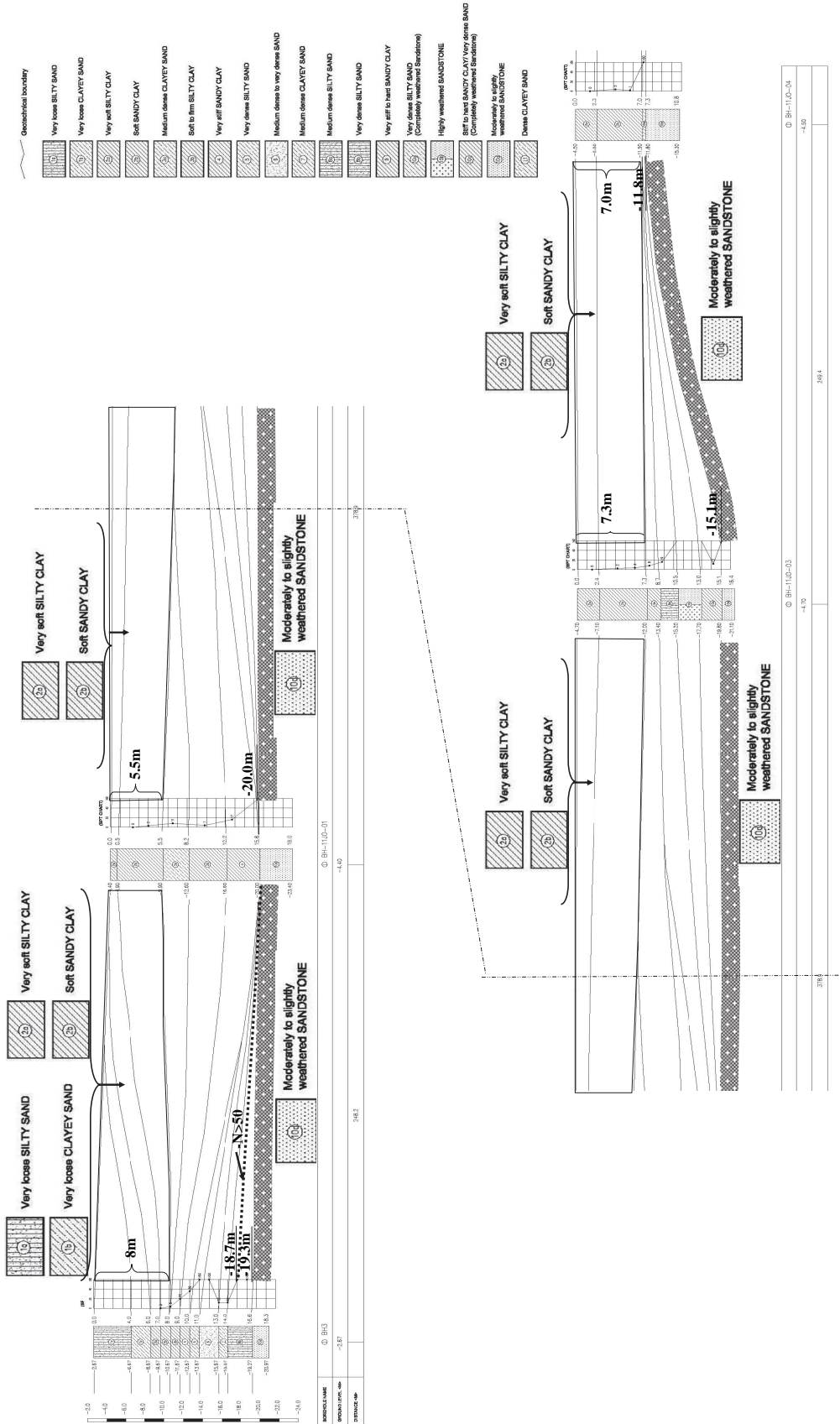


図 A1-7 土質断面図 (Line 1)

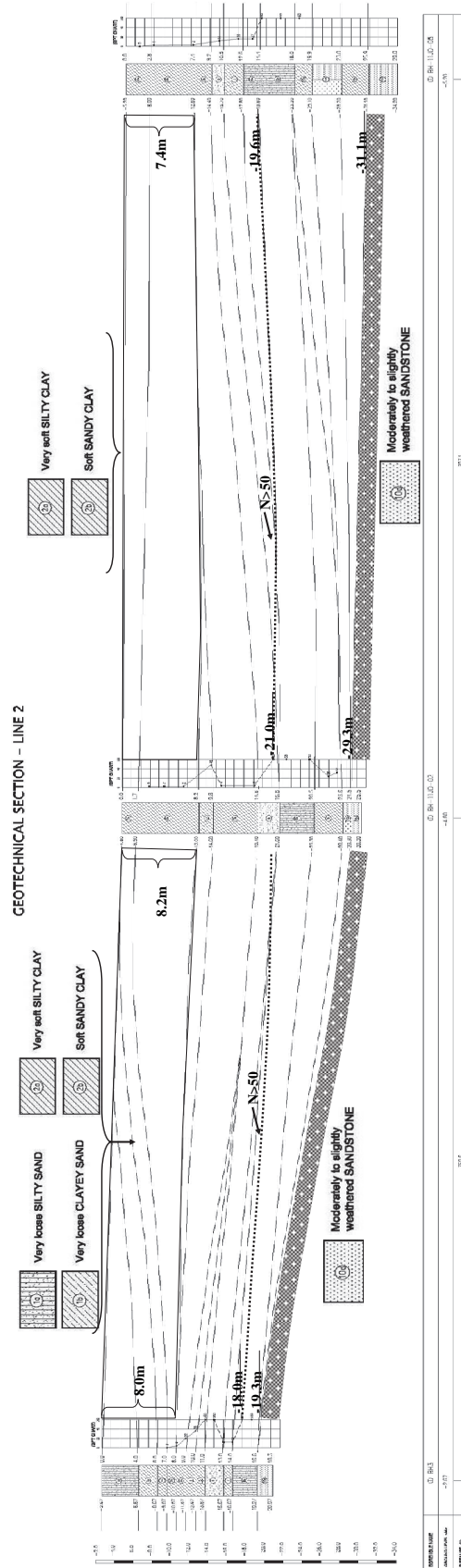


図 A1-8 土質断面図 (Line 2)

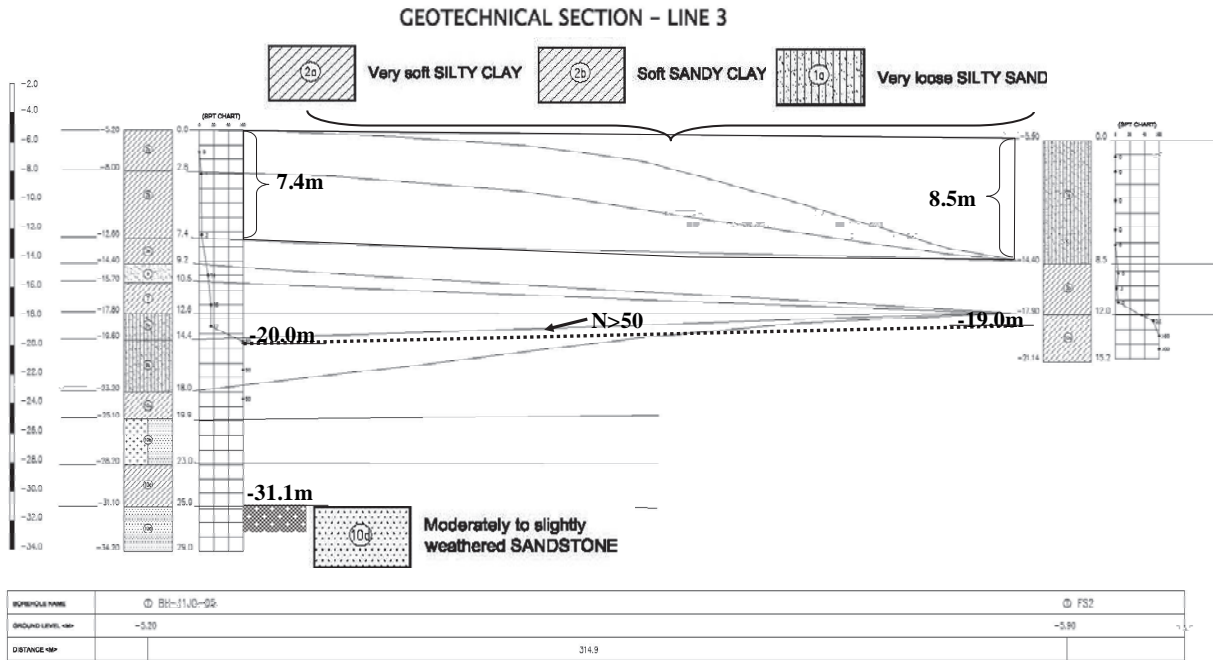


図 A 1-9 土質断面図 (Line 3)

GEOTECHNICAL SECTION - LINE 4

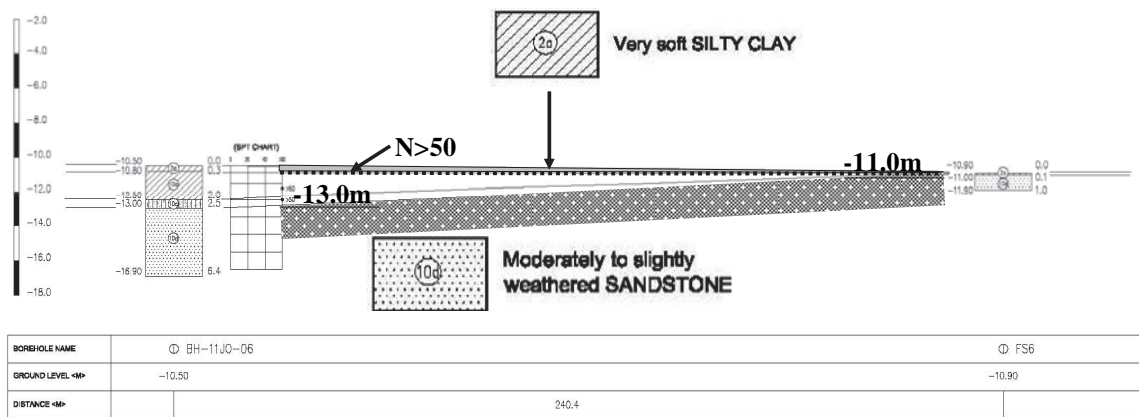


図 A 1-10 土質断面図 (Line 4)

表 A1-1 土質室内試験要約 (その 1)

Lab. No.	Borehole No.	Sample No.	Depth of Sample		Particle Size Distribution - P (%)													Natural Moisture Content	Absorption	Specific Gravity	Unit Weight		Liquid limit	Plastic limit	
					From	To	Gravel		Sand						Silt		Clay				Natural	Dry			
			>9.50	4.75 to 9.50			2.36 to 4.75	2.00 to 2.36	1.18 to 2.00	0.60 to 1.18	0.425 to 0.60	0.30 to 0.425	0.15 to 0.30	0.075 to 0.15	0.010 to 0.075	0.005 to 0.010	0.002 to 0.005				<0.002	W			F _w
			m	m	mm	mm	mm	mm	mm	mm	mm	mm	mm	mm	mm	mm	mm				mm	mm			mm
BCP1	BH-11JO-01	UD1	1.4	2.4				0.3	1.8	3.1	14.3	37.0	18.3	12.4	2.3	3.2	7.3	29.5		2.66	1.93	1.49	23.8	16.4	
BCP2	BH-11JO-01	UD2	5.5	6.5			0.1	0.4	1.7	2.6	13.7	34.2	21.4	12.0	2.6	3.3	8.0	30.8		2.65	1.91	1.46	24.6	17.0	
BCP3	BH-11JO-01	UD3	8.8	9.8				0.2	2.4	4.0	14.6	32.0	19.8	14.2	1.5	2.0	9.3	15.6		2.65	2.12	1.83	18.9	13.9	
BCP4	BH-11JO-01	UD6	14.5	15.5				0.1	0.2	0.2	0.3	1.0	1.0	28.5	9.6	12.3	46.8	24.7		2.71	1.98	1.59	46.5	20.9	
BCP9	BH-11JO-01	RC1	15.9	17.7														0.34	5.5	2.68	2.32	2.31			
BCP5	BH-11JO-02	UD1	1.9	2.9					0.6	1.7	7.5	21.2	11.8	18.9	3.8	6.5	28.0	17.1		2.67	2.07	1.77	25.7	12.6	
BCP6	BH-11JO-02	UD2	5.6	6.6				0.2	1.5	2.6	13.2	32.9	16.5	12.4	2.6	6.2	11.9	34.5		2.67	1.87	1.39	27.0	16.6	
BCP10	BH-11JO-02	UD3	8.5	9.5	1.4	2.0	0.5	0.0	0.3	1.2	2.1	7.3	33.1	16.8	15.1	4.2	5.9	10.1	32.2		2.66	1.89	1.43	30.6	16.4
BCP7	BH-11JO-02	UD4	13.6	14.1								0.1	0.9	3.2	36.1	7.0	9.4	43.3	17.0		2.72	2.10	1.79	44.2	19.7
BCP8	BH-11JO-02	UD5	21.6	22.0			0.1	0.5	4.7	17.6	16.7	23.3	20.8	5.5	4.6	0.9	1.1	4.2	19.8		2.66	2.09	1.74	CAT	
BCP11	BH-11JO-02	D1	16.6	16.8		0.2	0.1	0.2	0.9	3.2	6.7	19.4	51.8	8.2	3.8	1.2	2.2	2.1	19.0		2.66			21.7	16.7
BCP12	BH-11JO-02	D3	20	20.2								2.3	47.8	31.9	6.7	2.7	2.1	6.5	20.2		2.65			24.8	16.9
BCP13	BH-11JO-02	RC1	24.5	25.5														0.42	4.80	2.69	2.35	2.34			
BCP14	BH-11JO-03	UD1	3.2	4.2			0.1	0.1	0.6	2.1	3.8	10.1	42.7	17.9	10.0	3.6	3.5	5.5	26.1		2.65	1.97	1.56	24.3	16.8
BCP15	BH-11JO-03	D1	7.5	8.0				0.1	0.8	1.9	7.2	25.9	10.4	10.5	1.8	6.9	34.5	22.4		2.65		0.00	24.6	13.1	
BCP16	BH-11JO-03	D2	8.8	9.3			0.1	0.1	0.9	2.6	5.7	21.3	52.1	7.7	3.8	1.3	1.9	2.5	18.2		2.64			21.5	16.3
BCP17	BH-11JO-03	RC1	10.5	11.5														0.52	4.90	2.67	2.34	2.33			
BCP18	BH-11JO-03	UD2	13.2	14.2								0.1	0.3	0.3	39.2	9.7	13.8	36.6	20.4		2.69	2.07	1.72	40.3	19.6
BCP19	BH-11JO-04	UD1	3.2	4.2			0.1	0.3	1.9	4.4	11.6	41.5	15.5	13.4	1.2	4.3	5.8	37.2		2.67	1.84	1.34	23.6	16.8	
BCP20	BH-11JO-04	RC1	7.3	8.3														0.53	4.60	2.65	2.36	2.34			
BCP21	BH-11JO-05	UD1	4.6	5.6				0.1	0.7	1.4	4.3	26.4	19.1	19.5	6.1	11.1	11.3	49.1		2.64	1.72	1.15	38.7	20.6	
BCP22	BH-11JO-05	UD2	8.0	9.0		0.6	0.5	0.0	0.1	0.2	0.5	1.9	12.3	14.3	20.3	4.8	6.8	37.7	25.8		2.71	1.98	1.57	33.2	16.4
BCP23	BH-11JO-05	D3	10.0	10.5	1.5	0.0	0.0	0.0	0.2	1.8	3.4	9.2	45.0	20.8	7.5	0.6	2.0	8.0	22.3		2.65			24.4	17.5
BCP24	BH-11JO-05	D4	12.0	12.5				0.1	1.5	16.4	10.8	11.8	24.6	8.6	4.8	0.8	1.3	19.3	23.6		2.68			24.3	12.9
BCP25	BH-11JO-05	D5	13.4	14.0			0.1	0.1	0.2	0.7	2.2	32.0	35.6	8.6	5.1	1.3	2.3	11.8	21.4		2.65			24.4	15.1
BCP26	BH-11JO-05	D6	14.5	15.0		0.2	0.4	0.1	0.3	0.9	1.3	4.7	41.3	23.4	12.8	1.7	2.1	10.8	20.0		2.65			23.0	14.1
BCP27	BH-11JO-05	RC2	20.9	21.9														1.10	5.22	2.68	2.34	2.31			
BCP28	BH-11JO-05	RC4	25.9 26.7	26.08 26.88														0.52	3.54	2.68	2.42	2.41			
		RC4b	26.10	26.67														1.40	10.30	2.68	2.13	2.10			
BCP29	BH-11JO-06	D2	2.0	2.4	13.0	6.2	4.3	0.8	1.4	2.1	1.2	1.8	7.9	9.3	20.8	5.0	8.8	17.4	21.2		2.72			25.0	14.4
BCP30	BH-11JO-06	RC2	3.5	4.7														0.79	2.16	2.70	2.56	2.54			
BCP31	BH-11JO-06	RC4	5.7	6.4														0.48	2.29	2.73	2.57	2.56			

表 A1-2 土質室内試験要約 (その 2)

No.	Lab. No.	Borehole No.	Sample No.	Physical Properties					Unconfined Compressive Test			Consolidation Test						Soil Classification According to ASTM D2487	Group symbol
				Plasticity Index	Porosity	Void ratio	Consistency	Degree of saturation	U.C.S	U.C.S (SATUR.)	Axial Strain	Coefficient of Consolidation	Compression Index	Recompression Index	Swell Index	Coefficient of Permeability	Preconsolidation Pressure		
				Ip	n	e	IL	Sr	qu	qs	εt	Cv1.2	Cc	Cr	Cs	Kv1.2	Pc		
				%	%	-	-	%	kg/cm ²	kg/cm ²	%	10 ⁻⁶ cm ² /s	-	-	-	10 ⁻⁷ cm/s	kg/cm ²		
1	BCP1	BH-11JO-01	UD1	7.4	44.0	0.785	1.77	100.0	0.16		7.57	0.95	0.15	0.06	0.02	0.22	0.94	Clayey sand	SC
2	BCP2	BH-11JO-01	UD2	7.6	44.9	0.815	1.81	100.0	0.07		10.90	1.24	0.11	0.08	0.01	0.24	0.66	Clayey sand	SC
3	BCP3	BH-11JO-01	UD3	5.0	30.9	0.448	0.34	92.3	1.01		3.42	1.18	0.036	0.019	0.011	0.08	1.09	Silty clay	CL-ML
4	BCP4	BH-11JO-01	UD6	25.6	41.3	0.704	0.15	95.1	1.27		15.00	0.36	0.189	0.064	0.037	0.10	1.01	Lean clay	CL
5	BCP9	BH-11JO-01	RC1		13.7	0.159		92.7	688	586								Sandstone	Rock
6	BCP5	BH-11JO-02	UD1	13.1	33.7	0.508	0.34	89.9	0.69		14.75	0.30	0.130	0.046	0.018	0.07	1.00	Sandy lean clay	CL
7	BCP6	BH-11JO-02	UD2	10.4	47.9	0.921	1.72	100.0	0.40		4.39	0.78	0.309	0.112	0.037	0.32	1.08	Clayey sand	SC
8	BCP10	BH-11JO-02	UD3	14.2	46.2	0.860		99.6	0.62		3.51	1.37	0.240	0.079	0.030	0.42	1.20	Clayey sand	SC
9	BCP7	BH-11JO-02	UD4	24.5	34.0	0.515	-0.11	89.8	3.75		15.07	0.50	0.131	0.060	0.021	0.06	1.51	Lean clay	CL
10	BCP8	BH-11JO-02	UD5		34.4	0.525		100.3				1.15	0.036	0.018	0.008	0.08	0.87	Well-graded sand with silt	SW-SM
11	BCP11	BH-11JO-02	D1	5.0			0.46											Poorly graded sand with silty clay	SP-SC
12	BCP12	BH-11JO-02	D3	7.9			0.42											Clayey sand	SC
13	BCP13	BH-11JO-02	RC1		13.0	0.149		86.7	688	586								Sandstone	Rock
14	BCP14	BH-11JO-03	UD1	7.5	41.0	0.696	1.24	99.4	0.21		8.30	1.3	0.070	0.038	0.023	0.15	0.81	Clayey sand	SC
15	BCP15	BH-11JO-03	D1	11.5														Sandy lean clay	CL
16	BCP16	BH-11JO-03	D2	5.2														Poorly graded sand with silty clay	SP-SC
17	BCP17	BH-11JO-03	RC1		12.8	0.147		89.0										Sandstone	Rock
18	BCP18	BH-11JO-03	UD2	20.7	36.1	0.564	0.04	97.3	2.38		15.12	0.45	0.171	0.073	0.033	0.07	1.75	Lean clay	CL
19	BCP19	BH-11JO-04	UD1	6.8	49.8	0.993	3.00	100.0	0.06		7.04	0.54	0.182	0.092	0.042	0.31	0.33	Silty, clayey sand	SC-SM
20	BCP20	BH-11JO-04	RC1		11.5	0.130		93.8	706	563								Sandstone	Rock
21	BCP21	BH-11JO-05	UD1	18.1	56.4	1.296	1.57	100.0	0.05		12.48	0.39	0.393	0.269	0.053	0.23	0.80	Clayey sand	SC
22	BCP22	BH-11JO-05	UD2	16.8	42.1	0.726	0.56	96.3				0.45	0.263	0.087	0.024	0.15	1.18	Sandy lean clay	CL
23	BCP23	BH-11JO-05	D3	6.9			0.70											Silty, clayey sand	SC-SM
24	BCP24	BH-11JO-05	D4	11.4			0.94											Clayey sand	SC
25	BCP25	BH-11JO-05	D5	9.3			0.68											Clayey sand	SC
26	BCP26	BH-11JO-05	D6	8.9			0.66											Clayey sand	SC
27	BCP27	BH-11JO-05	RC2		13.8	0.160		87.4	164	91								Sandstone	Rock
28	BCP28	BH-11JO-05	RC4		10.1	0.112		84.7	670	567								Sandstone	Rock
			RC4b		21.6	0.276		100.0	6.37	0.00								Siltstone	Rock
29	BCP29	BH-11JO-06	D2	10.6			0.64											Sandy lean clay with gravel	CL
30	BCP30	BH-11JO-06	RC2		5.9	0.063		92.6	408	356								Sandstone	Rock
31	BCP31	BH-11JO-06	RC4		6.2	0.066		94.7	317	174								Sandstone	Rock