

Lampiran

LAMPIRAN 1: DATABASE RENCANA ANGKUTAN UMUM

Database yang terdiri dari data yang berguna dan dikelola untuk perencanaan transportasi adalah penting dalam rangka memberikan gambaran keseluruhan dari wilayah studi dan aspek-aspek spesifiknya serta untuk digunakan dalam analisis demand. Data yang dikumpulkan dan dikembangkan melalui studi ini dikompilasikan seluruhnya ke dalam Database Rencana Angkutan Umum.

1) Struktur Database

Database Rencana Angkutan Umum terdiri dari tiga kategori, antara lain (1) Peta Dasar dan Indikator Dasar, (2) Rencana Transportasi dan (3) Undang-Undang/Peraturan. Peta Dasar dan Indikator Dasar mencakup data geografi dalam format GIS yang diaplikasikan untuk ArcGIS dan berguna untuk analisis kondisi eksisting di wilayah studi. Adapun Rencana Transportasi mencakup data jaringan transportasi dan volume lalu lintas yang dapat digunakan untuk CUBE dan cocok untuk dasar peramalan demand. Undang-Undang /Peraturan mencakup naskah lengkap dari undang-undang dan peraturan yang berkaitan dengan studi.

(1) Peta Dasar dan Indikator Dasar

Data di dalam Peta Dasar dan Indikator Dasar terutama dikumpulkan dari database GIS JUTPI, sensus, dokumen-dokumen terkait dan survey lapangan oleh Tim Studi. Data-data tersebut mencakup 1) Kondisi Wilayah Studi, 2) Indikator Sosio-ekonomi, 3) Fasilitas Transportasi, 4) Fasilitas Angkutan Umum dan 5) Fasilitas Lainnya. Gambar-gambar yang terdapat di dalam laporan mencakup JABODETABEK dan menunjukkan kondisi eksisting di tahun 2010, selain itu beberapa tambahan sesuai dengan catatan khususnya.

Tabel A1.1 Daftar Gambar Peta Dasar dan Indikator Dasar

Aspek	Unit	Gambar No.
1) Kondisi Wilayah Studi	Wilayah Studi di Indonesia	Gambar A1.1.
	Wilayah Studi JABODETABEK	Gambar A1.2.
	Tata Ruang di Wilayah Studi (RTRW Jabodetabekpunjur)	Gambar A1.3.
	Tata Guna Lahan Eksisting	Gambar A1.4.
	Sistem Air	Gambar A1.5.
	Land Subsidence	Gambar A1.6.
2) Indikator Sosio Ekonomi	Kepadatan Penduduk berdasarkan Sensus Kelurahan	Gambar A1.7.
	Keseimbangan Gender berdasarkan Sensus Kelurahan	Gambar A1.8.
3) Fasilitas Transportasi	Jaringan Jalan berdasarkan Kelas	Gambar A1.9.
	Jaringan Jalan berdasarkan Kapasitas	Gambar A1.10.
	Flyovers di DKI Jakarta	Gambar A1.11.
	Rencana Jalan JUTPI	Gambar A1.12.
	Rencana Proyek Kereta Api JUTPI	Gambar A1.13.
4) Fasilitas Angkutan Umum	Jaringan Busway	Gambar A1.14.
	Terminal Bus berdasarkan Tipe	Gambar A1.15.
	Jaringan Busway dan Terminal Bus berdasarkan Tipe di DKI Jakarta	Gambar A1.16.
5) Fasilitas Lainnya	Fasilitas Sosial di DKI Jakarta 2002	Gambar A1.17.
	Stasiun Pengawasan Lingkungan dan Hasil Penelitian di DKI Jakarta 2007-2008	Gambar A1.18.

(2) Rencana Transportasi

Data di dalam Rencana Transportasi dikumpulkan dari JUTPI dan survey angkutan umum yang dilakukan oleh JAPTraPIS. Survey tersebut mencakup 6) Public Transportation Survey, 7) OD Table, 8) Network, 9) Public Transportation Line Data, 10) Zone System and 11) Parameter lainnya.

(3) Undang-Undang/Peraturan

Data terkait undang-undang dan peraturan Indonesia dikumpulkan dari pemerintah pusat, pemerintah-pemerintah daerah dan lembaga-lembaga terkait. Data tersebut mencakup undang-undang/peraturan dasar, undang-undang/peraturan dasar angkutan jalan, undang-undang/peraturan angkutan umum, undang-undang/peraturan infrastruktur, undang-undang/peraturan kelembagaan, undang-undang/peraturan lingkungan hidup dan lain-lain.

2) Daftar File Data

File data di dalam database rencana angkutan umum ditunjukkan pada Tabel A.2. Dokumen peta dipersiapkan dalam bentuk format “.mxd” ditandai dengan “Items”, file data yang terdiri dari “.mxd” dalam “.shp” format ditandai dengan “Related File Name”, lokasi file SHP ditunjukkan dengan “Folder Location”.

Tabel A1.2. Daftar File Data Peta Dasar dan Indikator Dasar

Aspek	Unit	Nama File Terkait	Lokasi Folder
Peta Dasar dan Indikator Dasar			
1) Kondisi Wilayah Studi	Wilayah Studi di Indonesia	JABODETABEK.shp	/JAPTraPIS_PTDATABASE/GIS/1_StudyArea/
		MajorCities_PKN.shp	/JAPTraPIS_PTDATABASE/GIS/1_StudyArea/
		ProvincialBoundaries.shp	/JAPTraPIS_PTDATABASE/GIS/1_StudyArea/
	Wilayah Studi JABODETABEK	Boundary_Kerulahan_Pop.shp	/JAPTraPIS_PTDATABASE/GIS/1_StudyArea/
		Boundary_Kabupaten.shp	/JAPTraPIS_PTDATABASE/GIS/1_StudyArea/
	Rencana Tata Ruang Wilayah Studi (RTRW Jabodetabekpunjur)	Zoning_RTRWJ.shp	/JAPTraPIS_PTDATABASE/GIS/1_StudyArea/
		Roads&Railway_Existing_RTRWJ.shp	/JAPTraPIS_PTDATABASE/GIS/1_StudyArea/
		Roads&Railway_Planned_RTRWJ.shp	/JAPTraPIS_PTDATABASE/GIS/1_StudyArea/
		CityCenter_Planned_RTRWJ.shp	/JAPTraPIS_PTDATABASE/GIS/1_StudyArea/
	Tata Guna Lahan Eksisting	Landuse_Existing.shp	/JAPTraPIS_PTDATABASE/GIS/1_StudyArea/
Sistem Air	River.shp	/JAPTraPIS_PTDATABASE/GIS/1_StudyArea/	
Land Subsidence	LandSubsidence_DKIJakarta.shp	/JAPTraPIS_PTDATABASE/GIS/1_StudyArea/	
2) Indikator Sosio Ekonomi	Kepadatan Penduduk berdasarkan Sensus Kelurahan	Boundary_Kerulahan_Pop.shp	/JAPTraPIS_PTDATABASE/GIS/1_StudyArea/
	Keseimbangan Gender berdasarkan Sensus Kelurahan	Boundary_Kerulahan_Pop.shp	/JAPTraPIS_PTDATABASE/GIS/1_StudyArea/

3) Fasilitas Transportasi	Jaringan Jalan berdasarkan Kelas	RoadNetwork_JUTPI2010.shp	/JAPTraPIS_PTDATABASE/GIS/3_Transport/	
		Port_Airport_JUTPI2010.shp	/JAPTraPIS_PTDATABASE/GIS/3_Transport/	
	Jaringan Jalan berdasarkan Kapasitas	RoadNetwork_JUTPI2010.shp	/JAPTraPIS_PTDATABASE/GIS/3_Transport/	
	Flyovers di DKI Jakarta	Flyover_DKIJakarta_2002.shp	/JAPTraPIS_PTDATABASE/GIS/3_Transport/	
	Rencana Jalan JUTPI	RoadProjects_Planned_JUTPI_2011.shp	/JAPTraPIS_PTDATABASE/GIS/3_Transport/	
	Rencana Proyek Kereta Api JUTPI		Railway_Existing.shp	/JAPTraPIS_PTDATABASE/GIS/3_Transport/
			MRT_Planned_JUTPI_2011.	/JAPTraPIS_PTDATABASE/GIS/3_Transport/
		PlannedMonorail_JUTPI_2011.shp	/JAPTraPIS_PTDATABASE/GIS/3_Transport/	
4) Fasilitas Angkutan Umum	Jaringan Busway	Busway_Existing_2011.shp	/JAPTraPIS_PTDATABASE/GIS/4_PublicTransport/	
	Terminal Bus berdasarkan Tipe	BusTerminal_Existing_2011.shp	/JAPTraPIS_PTDATABASE/GIS/4_PublicTransport/	
	Jaringan Busway dan Terminalnya berdasarkan Tipe di DKI Jakarta		Busway_Existing_2011.shp	/JAPTraPIS_PTDATABASE/GIS/4_PublicTransport/
			BusTerminal_Existing_2011.shp	/JAPTraPIS_PTDATABASE/GIS/4_PublicTransport/
5) Fasilitas Lainnya	Fasilitas Sosial di DKI Jakarta 2002	Hospital_2002.shp	/JAPTraPIS_PTDATABASE/GIS/5_Others/	
		School_2002.shp	/JAPTraPIS_PTDATABASE/GIS/5_Others/	
		Hospital_2002_Buffer1km.shp	/JAPTraPIS_PTDATABASE/GIS/5_Others/	
		School_2002_Buffer1km.shp	/JAPTraPIS_PTDATABASE/GIS/5_Others/	
	Stasiun Pengawasan Lingkungan dan Observasi DKI Jakarta 2007-2008	EnvironmentalMonitoringStation.shp	/JAPTraPIS_PTDATABASE/GIS/5_Others/	
Rencana Transportasi				
1) Public Transportation Survey	Busway Count Data	Bus_Count(busway).xlsx	/JAPTraPIS_PTDATABASE/Survey Data/Bus Vehicle and Passenger Traffic Count Survey/Busway Count/	
	Ordinary Bus Count Data	Bus_Count(bus).xlsx	/JAPTraPIS_PTDATABASE/Survey Data/Bus Vehicle and Passenger Traffic Count Survey/Ordinary Bus Count/	
	Bus Route Operation Data	Bus_Operation.xlsx	JAPTraPIS_PTDATABASE/Survey Data/Bus Route Operation Survey/	
	Public Transportation Passenger Interview	Passenger interview survey input.xlsx	JAPTraPIS_PTDATABASE/Survey Data/Passenger interview survey/	
	Public Transportation Driver Interview	Driver interview survey input.xlsx	JAPTraPIS_PTDATABASE/Survey Data/Driver Operator interview survey/	
	Public Transportation Operator Interview	Operator interview survey.xlsx	JAPTraPIS_PTDATABASE/Survey Data/Driver Operator interview survey/	

2) OD Table	OD Table (Car/High income/Year 2010)	CAR-H-VT_S10.csv	JAPTraPIS_PTDATABASE/CUBE/OD Table/Yr2010-S10/
	OD Table (Car/Middle/income/Year 2010)	CAR-M-VT_S10.csv	JAPTraPIS_PTDATABASE/CUBE/OD Table/Yr2010-S10/
	OD Table (Car/Low income/Year 2010)	CAR-L-VT_S10.csv	JAPTraPIS_PTDATABASE/CUBE/OD Table/Yr2010-S10/
	OD Table (Motorcycle/High income/Year 2010)	MC-H-VT_S10.csv	JAPTraPIS_PTDATABASE/CUBE/OD Table/Yr2010-S10/
	OD Table (Motorcycle/Middle income/Year 2010)	MC-M-VT_S10.csv	JAPTraPIS_PTDATABASE/CUBE/OD Table/Yr2010-S10/
	OD Table (Motorcycle/Low income/Year 2010)	MC-L-VT_S10.csv	JAPTraPIS_PTDATABASE/CUBE/OD Table/Yr2010-S10/
	OD Table (Public Transportation/High income/Year 2010)	PUB-H_S10.csv	JAPTraPIS_PTDATABASE/CUBE/OD Table/Yr2010-S10/
	OD Table (Public Transportation/Middle income/Year 2010)	PUB-M_S10.csv	JAPTraPIS_PTDATABASE/CUBE/OD Table/Yr2010-S10/
	OD Table (Public Transportation/Low income/Year 2010)	PUB-L_S10.csv	JAPTraPIS_PTDATABASE/CUBE/OD Table/Yr2010-S10/
	OD Table (Large Truck/Year 2010)	TRK-LG-VT_S10.csv	JAPTraPIS_PTDATABASE/CUBE/OD Table/Yr2010-S10/
	OD Table (Small Truck/Year 2010)	TRK-SM-VT_S10.csv	JAPTraPIS_PTDATABASE/CUBE/OD Table/Yr2010-S10/
	OD Table (Car/High income/Year 2014)	CAR-H-VT_S14.csv	JAPTraPIS_PTDATABASE/CUBE/OD Table/Yr2014-S14/
	OD Table (Car/Middle income/Year 2014)	CAR-M-VT_S14.csv	JAPTraPIS_PTDATABASE/CUBE/OD Table/Yr2014-S14/
	OD Table (Car/Low income/Year 2014)	CAR-L-VT_S14.csv	JAPTraPIS_PTDATABASE/CUBE/OD Table/Yr2014-S14/
	OD Table (Motorcycle/High income/Year 2014)	MC-H-VT_S14.csv	JAPTraPIS_PTDATABASE/CUBE/OD Table/Yr2014-S14/
	OD Table (Motorcycle/Middle income/Year 2014)	MC-M-VT_S14.csv	JAPTraPIS_PTDATABASE/CUBE/OD Table/Yr2014-S14/
	OD Table (Motorcycle/Low income/Year 2014)	MC-L-VT_S14.csv	JAPTraPIS_PTDATABASE/CUBE/OD Table/Yr2014-S14/
	OD Table (Public Transportation High income Year 2014)	PUB-H_S14.csv	JAPTraPIS_PTDATABASE/CUBE/OD Table/Yr2014-S14/
	OD Table (Public Transportation Middle income Year 2014)	PUB-M_S14.csv	JAPTraPIS_PTDATABASE/CUBE/OD Table/Yr2014-S14/
	OD Table (Public Transportation/Low income/Year 2014)	PUB-L_S14.csv	JAPTraPIS_PTDATABASE/CUBE/OD Table/Yr2014-S14/

OD Table (Large Truck/Year 2014)	TRK-LG-VT_S14.csv	JAPTraPIS_PTDATABASE/ CUBE/OD Table/Yr2014- S14/
OD Table (Small Truck/Year 2014)	TRK-SM-VT_S14.csv	JAPTraPIS_PTDATABASE/ CUBE/OD Table/Yr2014- S14/
OD Table (Car High income Year 2020 Do Nothing Case)	CAR-H-VT_S20.csv	JAPTraPIS_PTDATABASE/ CUBE/OD Table/Yr2020- S20/
OD Table (Car/Middle income/Year 2020/Do Nothing Case)	CAR-M-VT_S20.csv	JAPTraPIS_PTDATABASE/ CUBE/OD Table/Yr2020- S20/
OD Table (Car/Low income/Year 2020/ Do Nothing Case)	CAR-L-VT_S20.csv	JAPTraPIS_PTDATABASE/ CUBE/OD Table/Yr2020- S20/
OD Table (Motorcycle/High income/Year 2020/ Do Nothing Case)	MC-H-VT_S20.csv	JAPTraPIS_PTDATABASE/ CUBE/OD Table/Yr2020- S20/
OD Table (Motorcycle/Middle income/Year 2020/ Do Nothing Case)	MC-M-VT_S20.csv	JAPTraPIS_PTDATABASE/ CUBE/OD Table/Yr2020- S20/
OD Table (Motorcycle/Low income/Year 2020/ Do Nothing Case)	MC-L-VT_S20.csv	JAPTraPIS_PTDATABASE/ CUBE/OD Table/Yr2020- S20/
OD Table (Public Transportation/High income/Year 2020/ Do Nothing Case)	PUB-H_S20.csv	JAPTraPIS_PTDATABASE/ CUBE/OD Table/Yr2020- S20/
OD Table (Public Transportation/Middle income/Year 2020/Do Nothing Case)	PUB-M_S20.csv	JAPTraPIS_PTDATABASE/ CUBE/OD Table/Yr2020- S20/
OD Table (Public Transportation/Low income/Year 2020/ Do Nothing Case)	PUB-L_S20.csv	JAPTraPIS_PTDATABASE/ CUBE/OD Table/Yr2020- S20/
OD Table (Large Truck/Year 2020/ Do Nothing Case)	TRK-LG-VT_S20.csv	JAPTraPIS_PTDATABASE/ CUBE/OD Table/Yr2020- S20/
OD Table (Small Truck Year 2020 Do Nothing Case)	TRK-SM-VT_S20.csv	JAPTraPIS_PTDATABASE/ CUBE/OD Table/Yr2020- S20/
OD Table (Car/High income/Year 2020/ Do Nothing Case)	CAR-H-VT_S22.csv	JAPTraPIS_PTDATABASE/ CUBE/OD Table/Yr2020- S22/
OD Table (Car/Middle/income Year 2020/ Do Something Case)	CAR-M-VT_S22.csv	JAPTraPIS_PTDATABASE/ CUBE/OD Table/Yr2020- S22/
OD Table (Car/Low income /Year 2020/ Do Something Case)	CAR-L-VT_S22.csv	JAPTraPIS_PTDATABASE/ CUBE/OD Table/Yr2020- S22/
OD Table (Motorcycle/High income/Year 2020/ Do Something Case)	MC-H-VT_S22.csv	JAPTraPIS_PTDATABASE/ CUBE/OD Table/Yr2020- S22/

	OD Table (Motorcycle/Middle income/Year 2020/ Do Something Case)	MC-M-VT_S22.csv	JAPTraPIS_PTDATABASE/ CUBE/OD Table/Yr2020- S22/
	OD Table (Motorcycle/Low income/Year 2020/ Do Something Case)	MC-L-VT_S22.csv	JAPTraPIS_PTDATABASE/ CUBE/OD Table/Yr2020- S22/
	OD Table (Public Transportation/High income/Year 2020/ Do Something Case)	PUB-H_S22.csv	JAPTraPIS_PTDATABASE/ CUBE/OD Table/Yr2020- S22/
	OD Table (Public Transportation/Middle income/Year 2020/Do Something Case)	PUB-M_S22.csv	JAPTraPIS_PTDATABASE/ CUBE/OD Table/Yr2020- S22/
	OD Table (Public Transportation/Low income/Year 2020/ Do Something Case)	PUB-L_S22.csv	JAPTraPIS_PTDATABASE/ CUBE/OD Table/Yr2020- S22/
	OD Table (Large Truck/Year 2020/ Do Something Case)	TRK-LG-VT_S22.csv	JAPTraPIS_PTDATABASE/ CUBE/OD Table/Yr2020- S22/
	OD Table (Small Truck/Year 2020/ Do Something Case)	TRK-SM-VT_S22.csv	JAPTraPIS_PTDATABASE/ CUBE/OD Table/Yr2020- S22/
3) Network	Master Network	MODIF_NET_907.net	JAPTraPIS_PTDATABASE/ CUBE/Network/
4) Public Transportation Line Data	Public Transportation Line Data (2010)	PTLINE2010-S10.lin	JAPTraPIS_PTDATABASE/ CUBE/PT Line/
	Public Transportation Line Data (2014)	PTLINE2014-S14.lin	JAPTraPIS_PTDATABASE/ CUBE/PT Line/
	Public Transportation Line Data (2020)	PTLINE2020-S22.lin	JAPTraPIS_PTDATABASE/ CUBE/PT Line/
5) Zone System	Zone System	Zone_Sys.shp	JAPTraPIS_PTDATABASE/ /CUBE/Zone/
6) Other Parameters	Penalty File	TURN_PEN.pen	JAPTraPIS_PTDATABASE/ /CUBE/Parameter/
	Public Transportation System File (2010)	PT_System2010.pts	JAPTraPIS_PTDATABASE/ /CUBE/Parameter/
	Public Transportation System File (2020)	PT_System2020.pts	JAPTraPIS_PTDATABASE/ /CUBE/Parameter/
	Public Transportation System Fare File (2010)	PT_Fare2010.far	JAPTraPIS_PTDATABASE/ /CUBE/Parameter/
	Public Transportation System Fare File (2014)	PT_Fare2014.far	JAPTraPIS_PTDATABASE/ /CUBE/Parameter/
	Public Transportation System Fare File (2020)	PT_Fare2020.far	JAPTraPIS_PTDATABASE/ /CUBE/Parameter/
	Zone Fare Matrix for Railway	RAIL_FARE_2010.MAT	JAPTraPIS_PTDATABASE/ /CUBE/Parameter/
	Public Transportation Factors File (2010)	PT_Factor2010.fac	JAPTraPIS_PTDATABASE/ /CUBE/Parameter/
	Public Transportation Factors File (2020)	PT_Factor2020.fac	JAPTraPIS_PTDATABASE/ /CUBE/Parameter/
Undang-Undang/Peraturan			
1) Laws/Regulations	General	Perda01 Year2008 Mid-term Development Plan 2007-2012 (JKT) (IND).doc	JAPTraPIS_PTDATABASE/ Laws/General/

		Perda12 Year2003 Traffic, Road Transport and Rail (JKT) (IND).doc	JAPTraPIS_PTDatabase/Laws/General/
		PerGub103 Year2007 PTM Macro (JKT) (IND).doc	JAPTraPIS_PTDatabase/Laws/General/
		Perpres12 Year 2012 Fuel Retail Price (ENG)	JAPTraPIS_PTDatabase/Laws/General/
		Perpres21 Year2011 MP3EI (IND).doc	JAPTraPIS_PTDatabase/Laws/General/
		Perpres54 Year2008 JABODETABEKPUNJUR (IND).pdf	JAPTraPIS_PTDatabase/Laws/General/
		Perpres54 Year2008 Jabodetabekpunjur Spatial Planning (IND).docx	JAPTraPIS_PTDatabase/Laws/General/
		Perpres68 Year2005 Procedures for Preparing the Bill (ENG)	JAPTraPIS_PTDatabase/Laws/General/
		PMK175 Year2009 Alokasi dan Pedoman DAK TA 2010 (IND).doc	JAPTraPIS_PTDatabase/Laws/General/
		PP15 Year2005 Toll Road (IND).docx	JAPTraPIS_PTDatabase/Laws/General/
		PP26 Year1985 Road (IND).docx	JAPTraPIS_PTDatabase/Laws/General/
		PP34 Year2006 Road (Elucidation) (IND).doc	JAPTraPIS_PTDatabase/Laws/General/
		PP34 Year2006 Road (IND).doc	JAPTraPIS_PTDatabase/Laws/General/
		PP56 Year2009 Railway (IND).pdf	JAPTraPIS_PTDatabase/Laws/General/
		PP65 Year2001 Regional Tax (ENG)	JAPTraPIS_PTDatabase/Laws/General/
		PP72 Year2009 Traffic and Railway (IND).pdf	JAPTraPIS_PTDatabase/Laws/General/
		UU17 Year2003 State Finance (IND).docx	JAPTraPIS_PTDatabase/Laws/General/
		UU38 Year2004 Road (Elucidation) (IND).docx	JAPTraPIS_PTDatabase/Laws/General/
		UU38 Year2004 Road (IND).doc	JAPTraPIS_PTDatabase/Laws/General/
	Road Transport - General	KM14 Year2006 Manajemen dan Rekayasa Lalu Lintas di Jalan (IND).pdf	JAPTraPIS_PTDatabase/Laws/RoadTransport-General/
		KM35 Year2003 Appendix 1 (IND).pdf	JAPTraPIS_PTDatabase/Laws/RoadTransport-General/
		KM35 Year2003 Appendix 2 (IND).pdf	JAPTraPIS_PTDatabase/Laws/RoadTransport-General/
		KM35 Year2003 Appendix 3 (IND).pdf	JAPTraPIS_PTDatabase/Laws/RoadTransport-General/
		KM35 Year2003 Appendix 4 (IND).pdf	JAPTraPIS_PTDatabase/Laws/RoadTransport-General/

	KM52 Year2006 Economy Class Fair Calculation (IND).pdf	JAPTraPIS_PTDatabase/Laws/RoadTransport-General/
	Perda05 Year1999 Parking (JKT) (IND).doc	JAPTraPIS_PTDatabase/Laws/RoadTransport-General/
	PerGub27 Year2011 MRT Corridor One (IND).doc	JAPTraPIS_PTDatabase/Laws/RoadTransport-General/
	PP08 Year2011 Multimodal Transport (IND).pdf	JAPTraPIS_PTDatabase/Laws/RoadTransport-General/
	PP32 Year2011 Engineering Management and Traffic (IND).doc	JAPTraPIS_PTDatabase/Laws/RoadTransport-General/
	PP37 Year2011 Transport Forum and Road Transport (IND).doc	JAPTraPIS_PTDatabase/Laws/RoadTransport-General/
	PP41 Year1993 Road Transport (Elucidation) (IND).docx	JAPTraPIS_PTDatabase/Laws/RoadTransport-General/
	PP41 Year1993 Road Transport (IND).docx	JAPTraPIS_PTDatabase/Laws/RoadTransport-General/
	PP42 Year1993 Vehicle Inspection on Road (IND).docx	JAPTraPIS_PTDatabase/Laws/RoadTransport-General/
	PP43 Year1993 Infrastructure and Road Traffic (IND).doc	JAPTraPIS_PTDatabase/Laws/RoadTransport-General/
	PP44 Year1993 Vehicle and Driver (IND).pdf	JAPTraPIS_PTDatabase/Laws/RoadTransport-General/
	RPP Forum Lalu Lintas (IND).doc	JAPTraPIS_PTDatabase/Laws/RoadTransport-General/
	RPP Kendaraan (IND).pdf	JAPTraPIS_PTDatabase/Laws/RoadTransport-General/
	RPP Manajemen dan Rekayasa Lalu Lintas (IND).pdf	JAPTraPIS_PTDatabase/Laws/RoadTransport-General/
	RPP MRLL 24 Maret 2011 (IND).doc	JAPTraPIS_PTDatabase/Laws/RoadTransport-General/
	RPP MRLL 24 Maret 2011(Elucidation) (IND).doc	JAPTraPIS_PTDatabase/Laws/RoadTransport-General/
	RPP RIKRANMOR (IND).pdf	JAPTraPIS_PTDatabase/Laws/RoadTransport-General/
	RPP Tata Cara Pemeriksaan (IND).doc	JAPTraPIS_PTDatabase/Laws/RoadTransport-General/
	UU14 Year1992 Traffic and Road Transport (IND).doc	JAPTraPIS_PTDatabase/Laws/RoadTransport-General/
	UU22 Year2009 Traffic and Road Transportation (IND).docx	JAPTraPIS_PTDatabase/Laws/RoadTransport-General/

		UU23 Year2007 Railway (Elucidation) (IND).docx	JAPTraPIS_PTDATABASE/Laws/RoadTransport-General/
		UU23 Year2007 Railway (IND).pdf	JAPTraPIS_PTDATABASE/Laws/RoadTransport-General/
	Public Transport (BUS)	KM35 Year2003 Public Passenger Vehicle Transportation on Road (IND).docx	JAPTraPIS_PTDATABASE/Laws/RoadTransport-BUS/
		KM84 Year1999 Implementation of General Bus (IND).doc	JAPTraPIS_PTDATABASE/Laws/RoadTransport-BUS/
		PerGub04 Year2009 Tarif Angkutan Penumpang Dengan Mobil Bus Umum (JKT) (IND).pdf	JAPTraPIS_PTDATABASE/Laws/RoadTransport-BUS/
		PerGub108 Year2010 Transjakarta Busway Personnel Performance Measure (IND).doc	JAPTraPIS_PTDATABASE/Laws/RoadTransport-BUS/
		PP23 Year2005 BLU Financial Management (IND).doc	JAPTraPIS_PTDATABASE/Laws/RoadTransport-BUS/
	Infrastructure	PerGub10 Year2010 Road Transport Terminal Management Unit (IND).doc	JAPTraPIS_PTDATABASE/Laws/Infrastructure/
		PerGub48 Year2004 Off-street Parking Space (IND).doc	JAPTraPIS_PTDATABASE/Laws/Infrastructure/
	Institutional	Perda07 Year2010 Building Construction (JKT) (IND).doc	JAPTraPIS_PTDATABASE/Laws/Institutional/
		Perda08 Year2010 Motor Vehicle Tax (JKT) (IND).doc	JAPTraPIS_PTDATABASE/Laws/Institutional/
		Perda09 Year2010 Vehicle Registration Tax (JKT) (IND).doc	JAPTraPIS_PTDATABASE/Laws/Institutional/
		Perda10 Year2008 Regional Government Organization (JKT) (IND).doc	JAPTraPIS_PTDATABASE/Laws/Institutional/
		Perda10 Year2010 Motor Vehicle Fuel Tax (JKT) (IND).doc	JAPTraPIS_PTDATABASE/Laws/Institutional/
		PerGub140 Year2010 Calculation of Motor Vehicle Tax after Vehicle in 2010 (IND).doc	JAPTraPIS_PTDATABASE/Laws/Institutional/
		PerGub154 Year2007 Technical Instruction for Regional Levy (IND).doc	JAPTraPIS_PTDATABASE/Laws/Institutional/
		PerGub16 Year2009 Exemption of Regional Levy to Public Transport Economy Class (IND).doc	JAPTraPIS_PTDATABASE/Laws/Institutional/
		PerGub16 Year2010 Parking Tax (IND).doc	JAPTraPIS_PTDATABASE/Laws/Institutional/

		PerGub160 Year2007 Technical Guidelines for Parking Fee Collection (IND).doc	JAPTraPIS_PTDatabase/ Laws/Institutional/
		PerGub166 Year2009 Calculation of Motor Vehicle Tax after Vehicle in 2009 (IND)..doc	JAPTraPIS_PTDatabase/ Laws/Institutional/
		PerGub48 Year2006 Transjakarta Busway Organization (IND).doc	JAPTraPIS_PTDatabase/ Laws/Institutional/
		PerGub50 Year2008 Passenger Transport Rate (IND).doc	JAPTraPIS_PTDatabase/ Laws/Institutional/
		PerGub83 Year2007 Payment Mechanism of Busway Service (IND).doc	JAPTraPIS_PTDatabase/ Laws/Institutional/
		Permen ESDM No.19 Year 2010 BBG for Transportation (IND).doc	JAPTraPIS_PTDatabase/ Laws/Institutional/
		Perpres36 Year2011 Gasoline Tax (IND).doc	JAPTraPIS_PTDatabase/ Laws/Institutional/
		PM37 Year2011 Education and Training Center of Land Transportation (IND).doc	JAPTraPIS_PTDatabase/ Laws/Institutional/
		PM71 Year2010 Tarif Angkutan Penyeberangan Lintas Antar Provinsi (IND).pdf	JAPTraPIS_PTDatabase/ Laws/Institutional/
		PMD06 Year2006 BKSP Secretariat Establishment (IND).doc	JAPTraPIS_PTDatabase/ Laws/Institutional/
		PMD69 Year2007 Urban Development Agreement (IND).doc	JAPTraPIS_PTDatabase/ Laws/Institutional/
		UU25 Year1999 Fiscal Balance btw Central and Regional Govt (IND).docx	JAPTraPIS_PTDatabase/ Laws/Institutional/
	Environment	KepMen ESDM No.2889 K-12-MEM-2010 BBM FY2010 (IND).doc	JAPTraPIS_PTDatabase/ Laws/Environment/
		KepMen ESDM No.2932 K-12-MEM-2010 Fuel for Tranp in Jakarta (IND).doc	JAPTraPIS_PTDatabase/ Laws/Environment/
		Perda02 Year2005 Air Pollution Control (JKT) (IND).doc	JAPTraPIS_PTDatabase/ Laws/Environment/
		PerGub92 Year2007 Emission Test and the Maintenance of Motorized Vehicle (ENG).doc	JAPTraPIS_PTDatabase/ Laws/Environment/
		UU23 Year1997 Environmental Management (IND).docx	JAPTraPIS_PTDatabase/ Laws/Environment/

Others	KM13 Year2006 Pedoman Pelaksanaan Lomba tertib Lalu Lintas dan Angkutan Kota (IND).pdf	JAPTraPIS_PTDatabese/ Laws/Others/
	Perda01 Year2011 APBD2011 (JKT) (IND).doc	JAPTraPIS_PTDatabese/ Laws/Others/
	Perda15 Year2010 Street Lighting (JKT) (IND).doc	JAPTraPIS_PTDatabese/ Laws/Others/
	PerGub110 Year2010 Parking Management Unit (IND).doc	JAPTraPIS_PTDatabese/ Laws/Others/
	PerGub111 Year2010 General Parking Location (IND).doc	JAPTraPIS_PTDatabese/ Laws/Others/
	PerGub123 Year2010 Transportation Operation and Maintenance (IND).doc	JAPTraPIS_PTDatabese/ Laws/Others/
	PerGub141 Year2007 Gas Fuel for Public Transport (IND).doc	JAPTraPIS_PTDatabese/ Laws/Others/
	PP02 Year2006 Loan and Grant (IND).doc	JAPTraPIS_PTDatabese/ Laws/Others/
	PP06 Year2009 Tariff on Non-tax State Revenue (IND).pdf	JAPTraPIS_PTDatabese/ Laws/Others/
	PP10 Year 2011 Procurement Procedure for Foreign Loan (Elucidation) (IND).pdf	JAPTraPIS_PTDatabese/ Laws/Others/
	PP100 Year200 Appointment of Civil Servant Employee (IND).pdf	JAPTraPIS_PTDatabese/ Laws/Others/
	PP101 Year2000 Education and Training for Civil Servant (IND).pdf	JAPTraPIS_PTDatabese/ Laws/Others/
	PP104 Year2000 Balance Finance (ENG).pdf	JAPTraPIS_PTDatabese/ Laws/Others/
	PP106 Year2000 Financial Management and Accountability in Implementation (ENG).pdf	JAPTraPIS_PTDatabese/ Laws/Others/
	PP107 Year2000 Regional Loan (IND).pdf	JAPTraPIS_PTDatabese/ Laws/Others/
	PP11 Year2001 Regional Finance (ENG).pdf	JAPTraPIS_PTDatabese/ Laws/Others/
	PP25 Year2000 Provincial Government Authority (IND).docx	JAPTraPIS_PTDatabese/ Laws/Others/
	PP26 Year2008 National Spatial Planning (IND).docx	JAPTraPIS_PTDatabese/ Laws/Others/
	PP30 Year2011 Regional Loan (IND).doc	JAPTraPIS_PTDatabese/ Laws/Others/
	PP30 Year2011 Regional Loan (Elucidation) (IND).pdf	JAPTraPIS_PTDatabese/ Laws/Others/

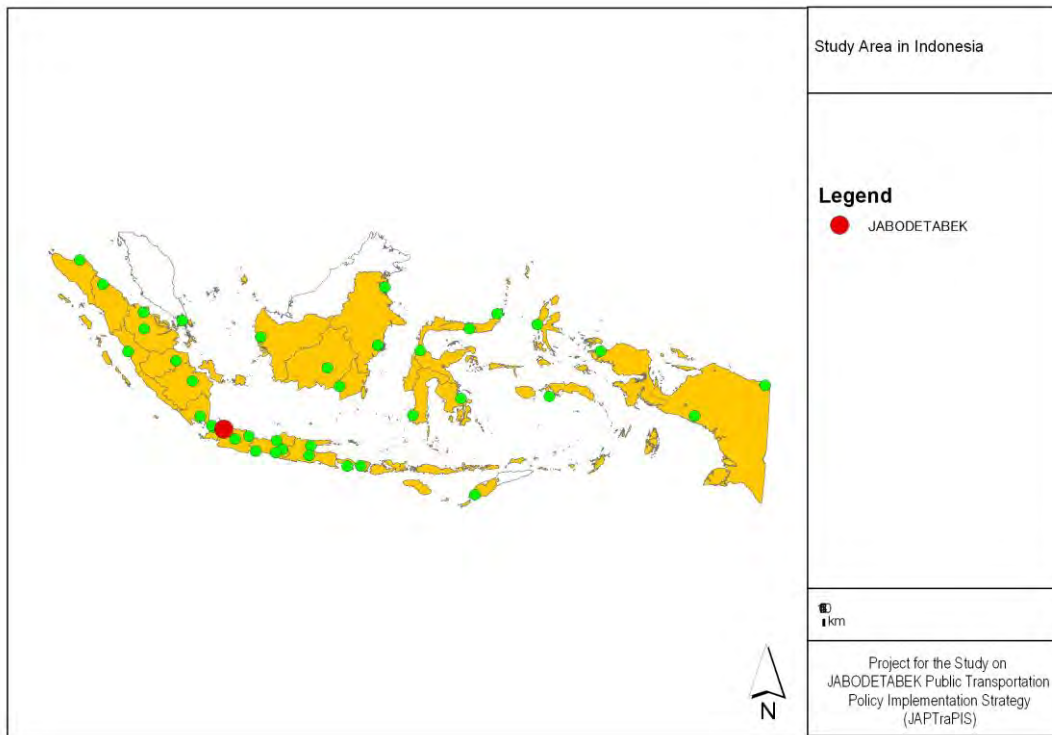
	PP38 Year2007 CG and LG Task Demarcation (Elucidation) (IND).pdf	JAPTraPIS_PTDatabese/ Laws/Others/
	PP38 Year2007 CG and LG Task Demarcation (IND).doc	JAPTraPIS_PTDatabese/ Laws/Others/
	PP50 Year2007 Implementation Procedure for Regional Cooperation (IND).doc	JAPTraPIS_PTDatabese/ Laws/Others/
	PP52 Year2001 Implementation of Assistance Tasks (IND).pdf	JAPTraPIS_PTDatabese/ Laws/Others/
	PP66 Year2001 Regional Retribution (IND).docx	JAPTraPIS_PTDatabese/ Laws/Others/
	PP84 Year2000 Regional Apparatus Organization Guideline (ENG).pdf	JAPTraPIS_PTDatabese/ Laws/Others/
	PP84 Year2001 Balance Fund (ING).pdf	JAPTraPIS_PTDatabese/ Laws/Others/
	PP97 Year2000 Formation of Civil Employee (IND).pdf	JAPTraPIS_PTDatabese/ Laws/Others/
	PP99 Year2000 Power Enhancement of Civil Servant (IND).pdf	JAPTraPIS_PTDatabese/ Laws/Others/
	RPP105 Year2000 Regional Finance Management (ENG).pdf	JAPTraPIS_PTDatabese/ Laws/Others/
	RUU Jasa Otoritas Keuangan (IND).doc	JAPTraPIS_PTDatabese/ Laws/Others/
	UU02 Year2002 National Police (Elucidation) (IND).docx	JAPTraPIS_PTDatabese/ Laws/Others/
	UU03 Year2011 Fund Transfer (Elucidation) (IND).doc	JAPTraPIS_PTDatabese/ Laws/Others/
	UU03 Year2011 Fund Transfer (IND).doc	JAPTraPIS_PTDatabese/ Laws/Others/
	UU05 Year1999 Prohibition of Monopoly Practices and Unfair Business Competition (IND).docx	JAPTraPIS_PTDatabese/ Laws/Others/
	UU08 Year1999 Consumer Protection (IND).docx	JAPTraPIS_PTDatabese/ Laws/Others/
	UU08 Year2005 Perubahan atas UU32-2004 (IND).doc	JAPTraPIS_PTDatabese/ Laws/Others/
	UU08 Year2011 Multimodal Transportation (IND).doc	JAPTraPIS_PTDatabese/ Laws/Others/
	UU12 Year2008 Perubahan Kedua atas UU32-2004 (IND).doc	JAPTraPIS_PTDatabese/ Laws/Others/
	UU12 Year2011 Drafting Law and Regulation (IND).doc	JAPTraPIS_PTDatabese/ Laws/Others/

		UU12 Year2011 Formulation of Law and Regulation (Elucidation) (IND).pdf	JAPTraPIS_PTDATABASE/ Laws/Others/
		UU19 Year2003 Stated Owned Enterprise (IND).docx	JAPTraPIS_PTDATABASE/ Laws/Others/
		UU24 Year1992 Spatial Management (ENG).pdf	JAPTraPIS_PTDATABASE/ Laws/Others/
		UU25 Year2004 National Development Planning System (Elucidation) (IND).doc	JAPTraPIS_PTDATABASE/ Laws/Others/
		UU25 Year2004 National Development Planning System (IND).doc	JAPTraPIS_PTDATABASE/ Laws/Others/
		UU25 Year2009 Public Services (IND).pdf	JAPTraPIS_PTDATABASE/ Laws/Others/
		UU26 Year2007 Spatial Planning (IND).docx	JAPTraPIS_PTDATABASE/ Laws/Others/
		UU27 Year2009 DKI-JKT The Capital of Indonesia (IND).pdf	JAPTraPIS_PTDATABASE/ Laws/Others/
		UU28 Year2002 Building Code (IND).doc	JAPTraPIS_PTDATABASE/ Laws/Others/
		UU28 Year2009 Regional Retribution and Tax (Elucidation) (IND).doc	JAPTraPIS_PTDATABASE/ Laws/Others/
		UU28 Year2009 Regional Retribution and Tax (IND).doc	JAPTraPIS_PTDATABASE/ Laws/Others/
		UU29 Year2007 DKI-JKT The Capital of Indonesia (IND).doc	JAPTraPIS_PTDATABASE/ Laws/Others/
		UU32 Year2004 Regional Government (IND).docx	JAPTraPIS_PTDATABASE/ Laws/Others/
		UU34 Year1999 Special Capital City District of Jakarta (IND).pdf	JAPTraPIS_PTDATABASE/ Laws/Others/

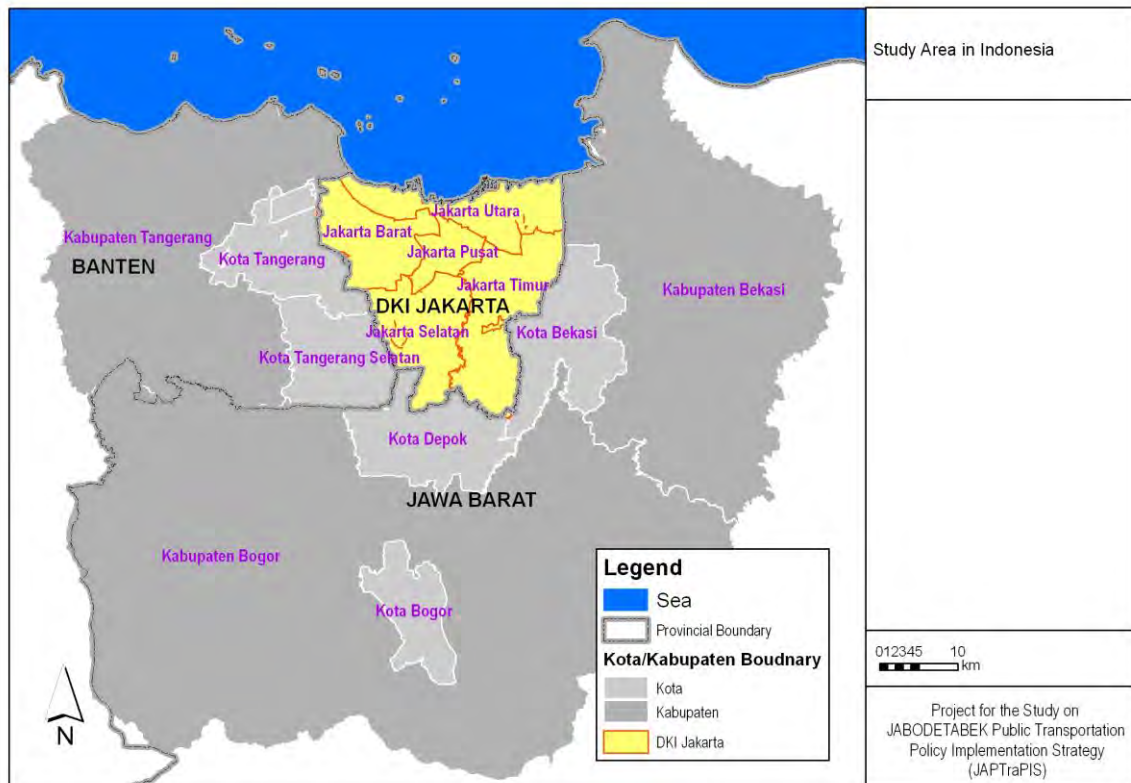
Source: Study Team

3) Gambar

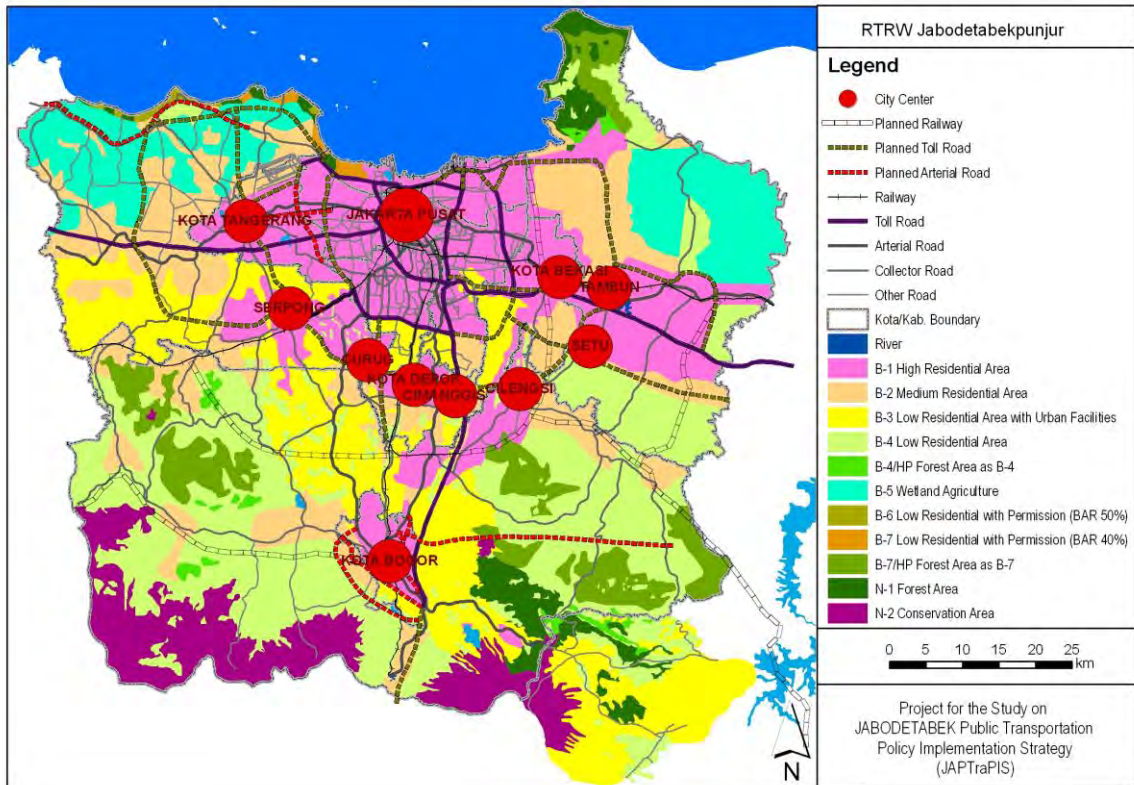
Gambar A1.1 Wilayah Studi di Indonesia



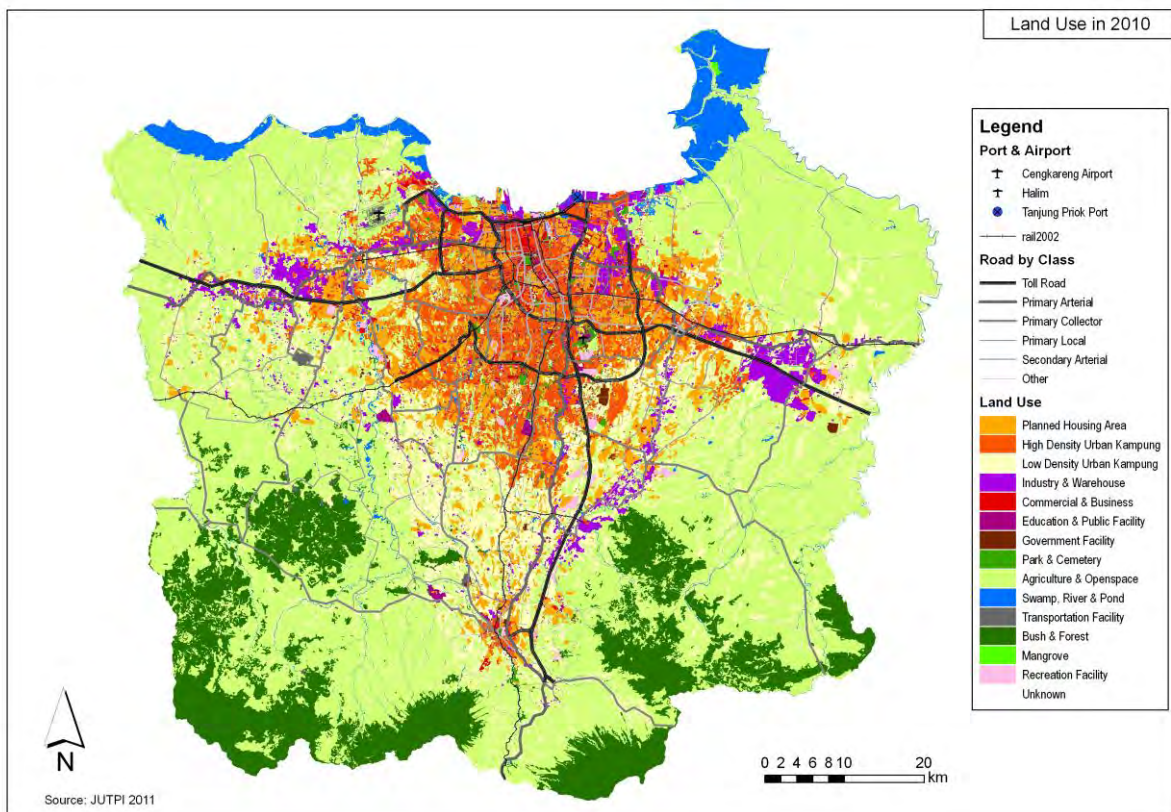
Gambar A1.2 Wilayah Studi JABODETABEK



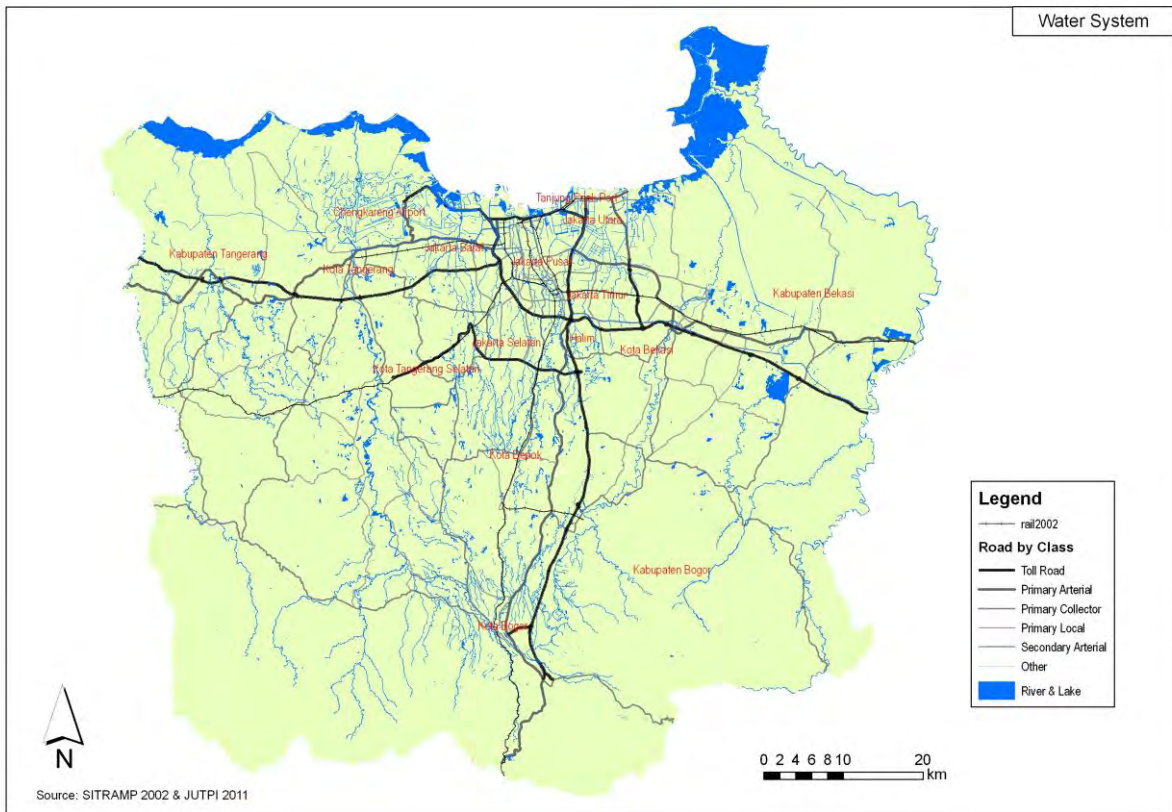
Gambar A1.3 Rencana Tata Ruang Wilayah Studi (RTRW Jabodetabekpunjur)



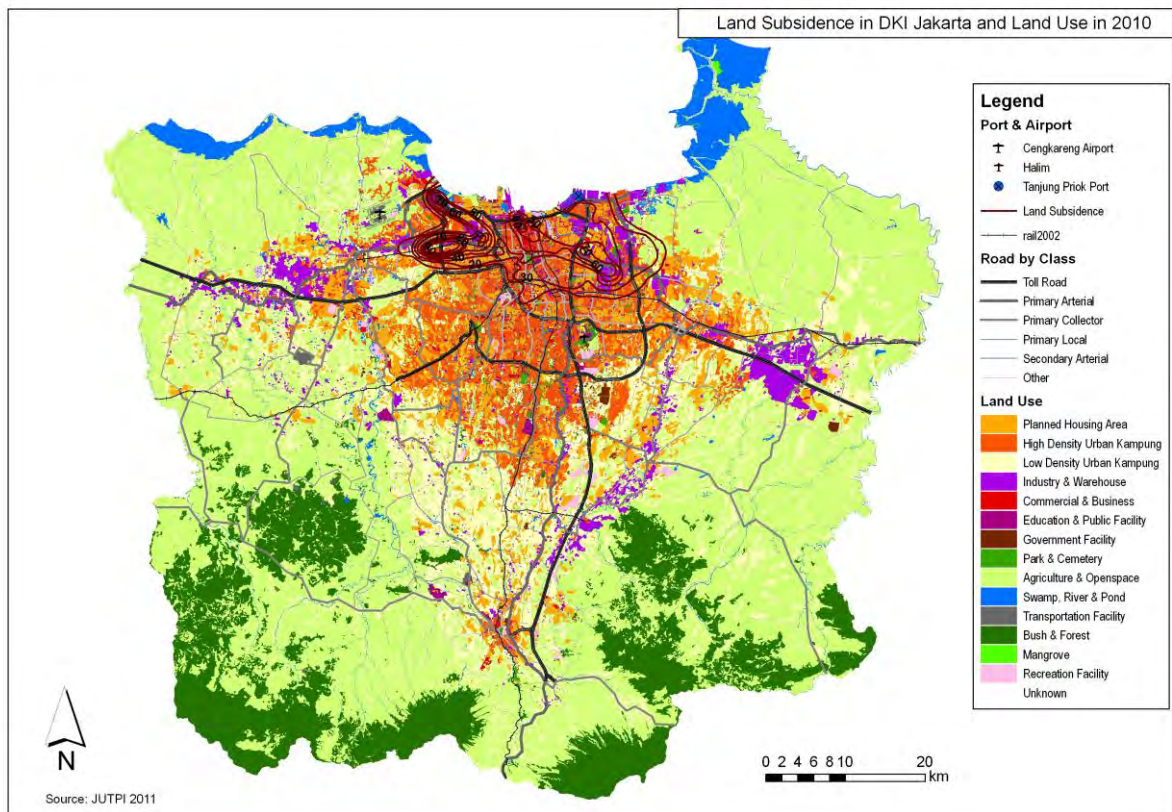
Gambar A1.4 Guna Lahan Eksisting



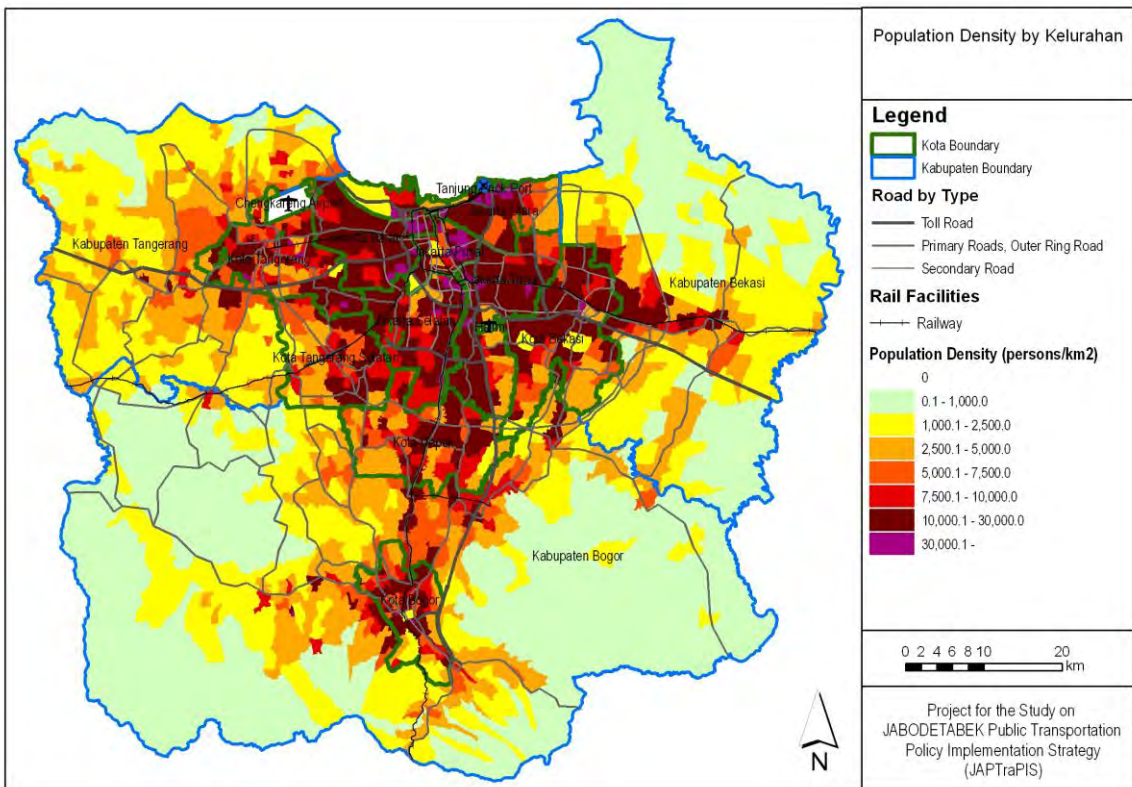
Gambar A1.5 Sistem Air



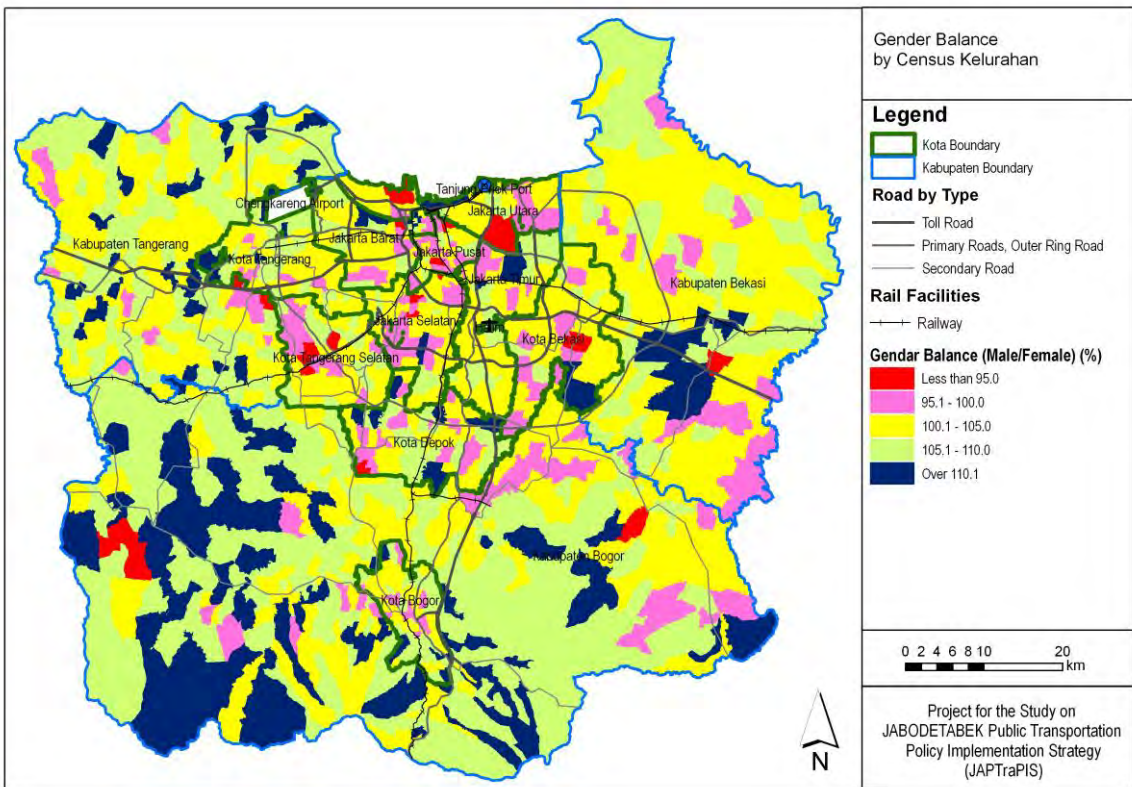
Gambar A1.6 Land Subsidence



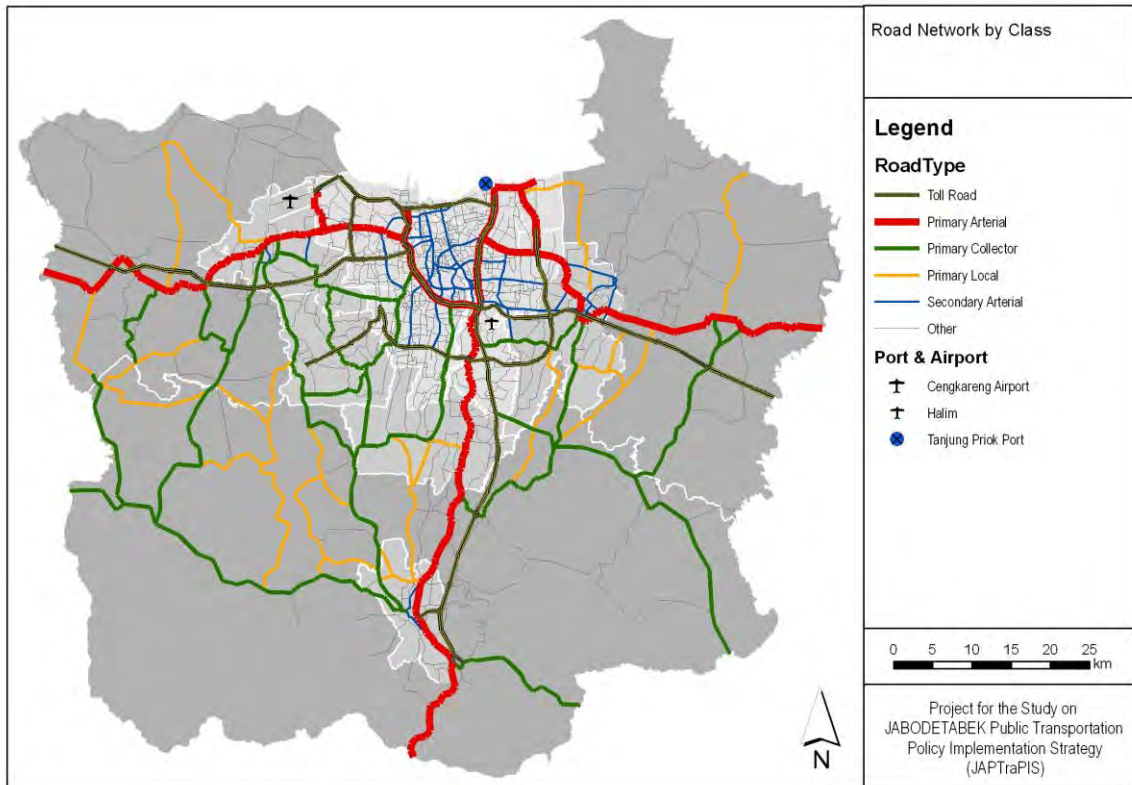
Gambar A1.7 Kepadatan Penduduk berdasarkan Sensus Kelurahan



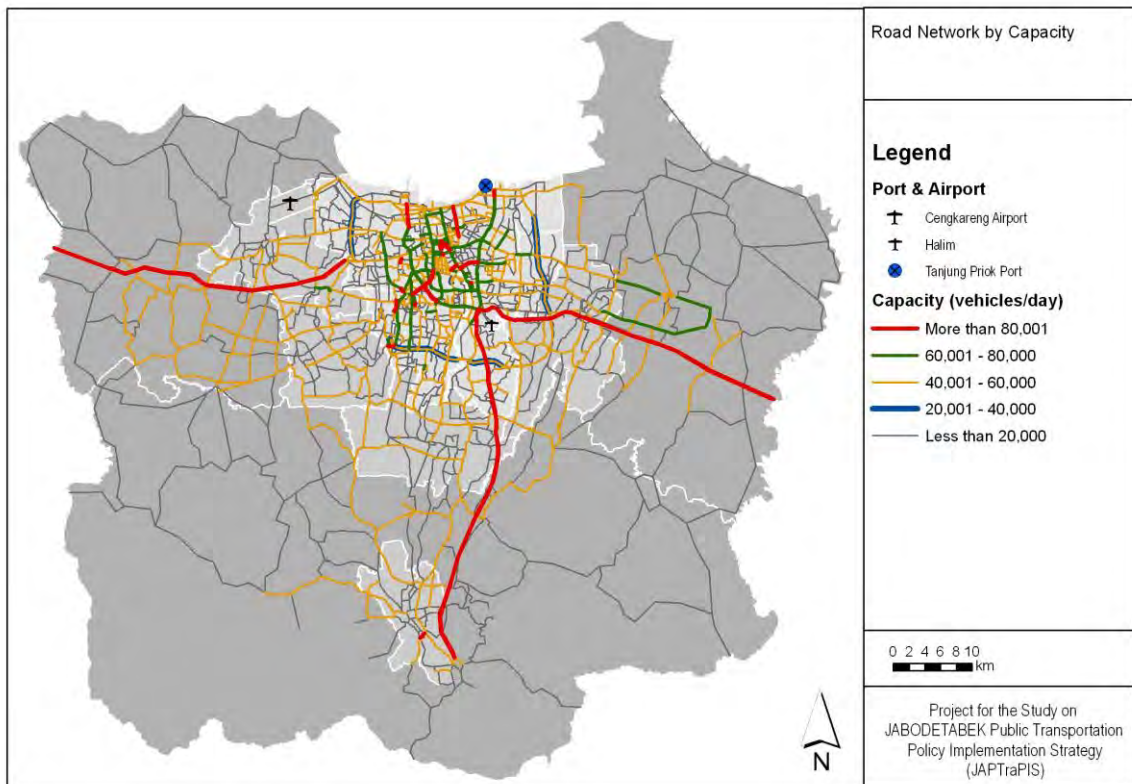
Gambar A1.8 Keseimbangan Gender berdasarkan Sensus Kelurahan



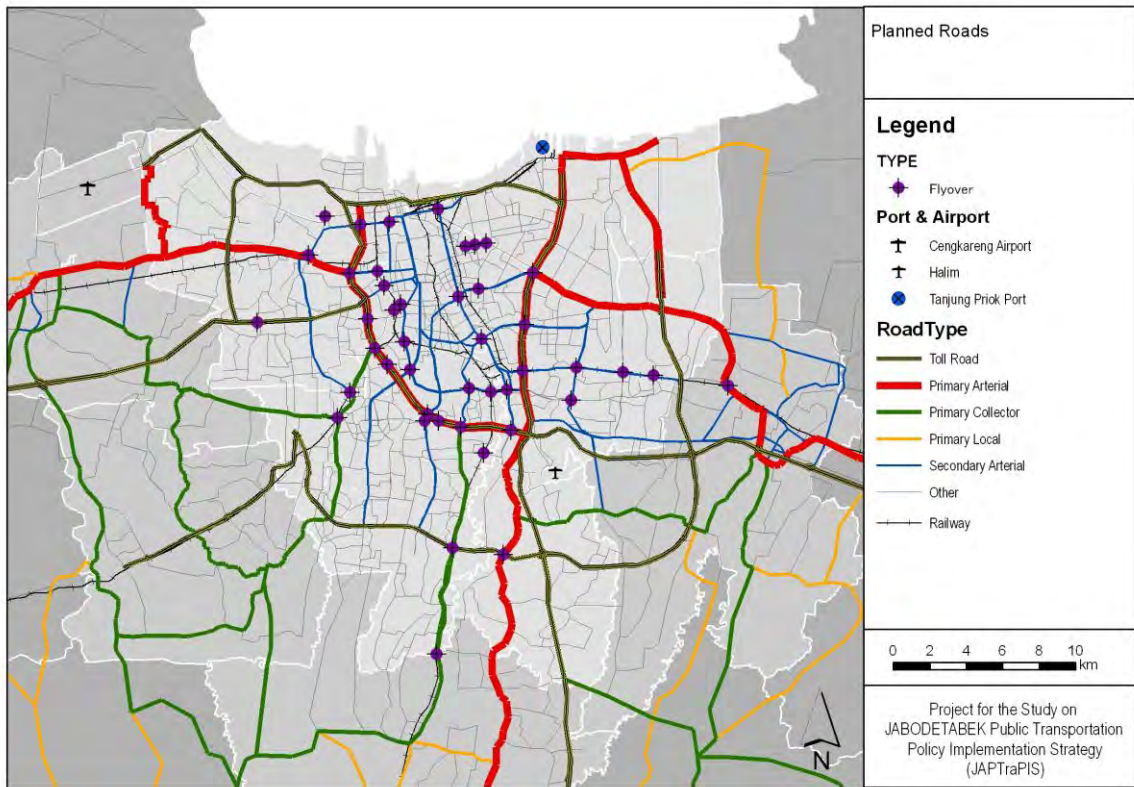
Gambar A1.9 Jaringan Jalan berdasarkan Kelas



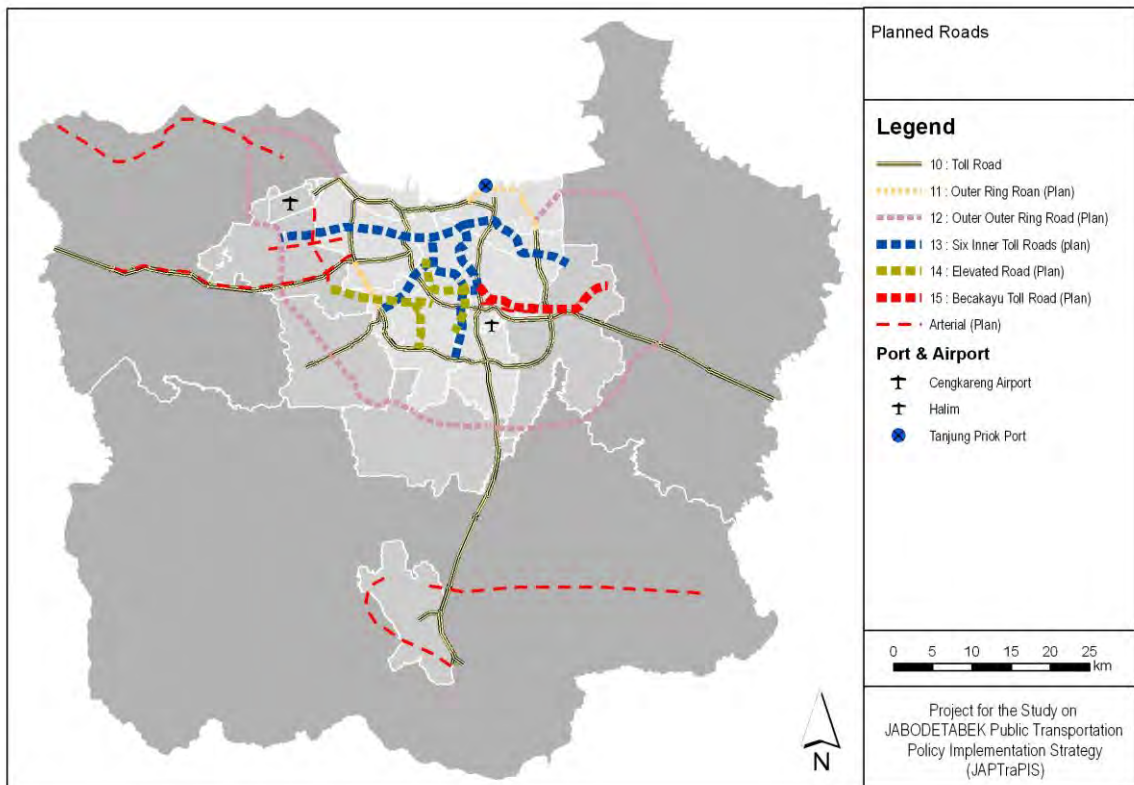
Gambar A1.10 Jaringan Jalan berdasarkan Kapasitas



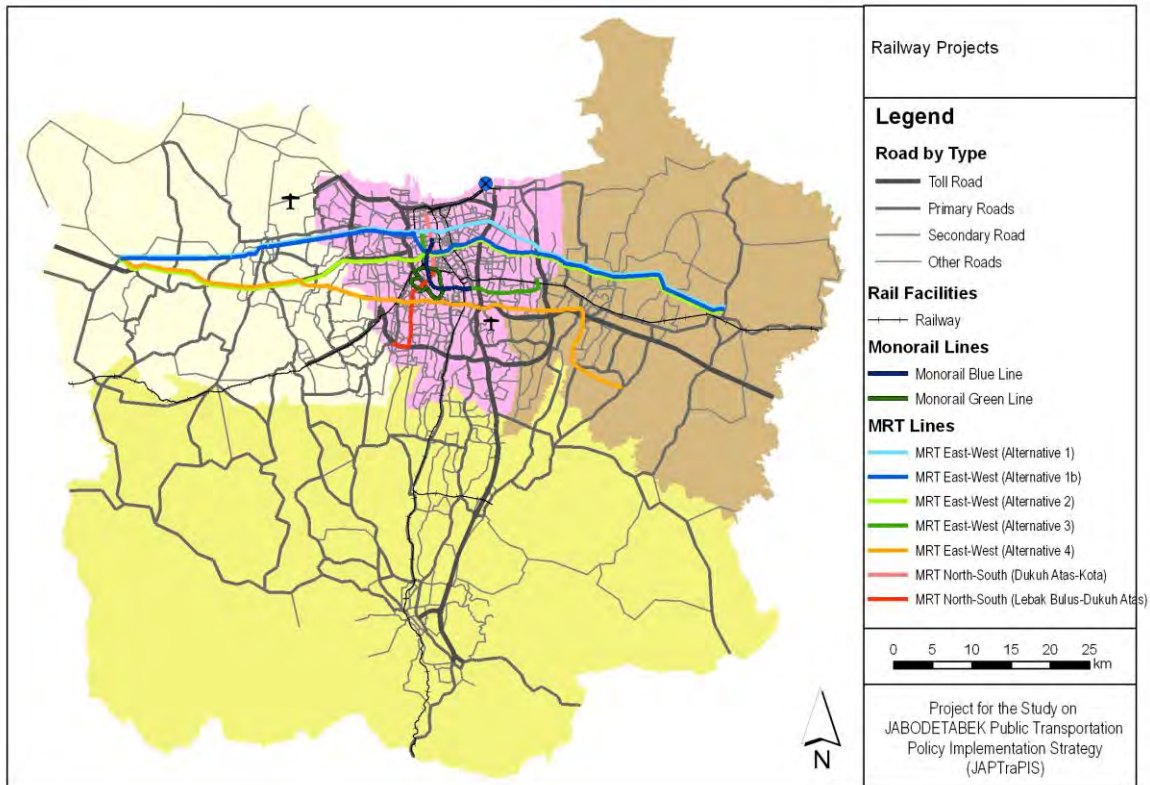
Gambar A1.11 Lokasi Flyovers di DKI Jakarta



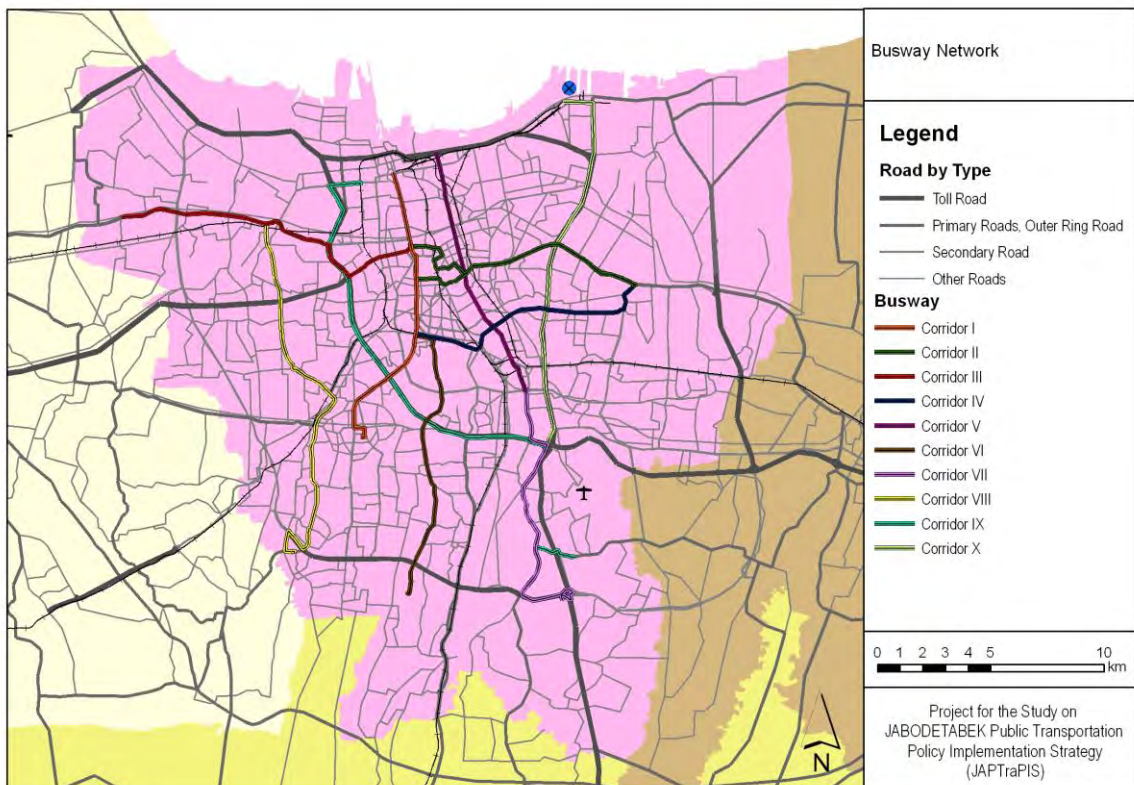
Gambar A1.12 Rencana Jalan JUTPI



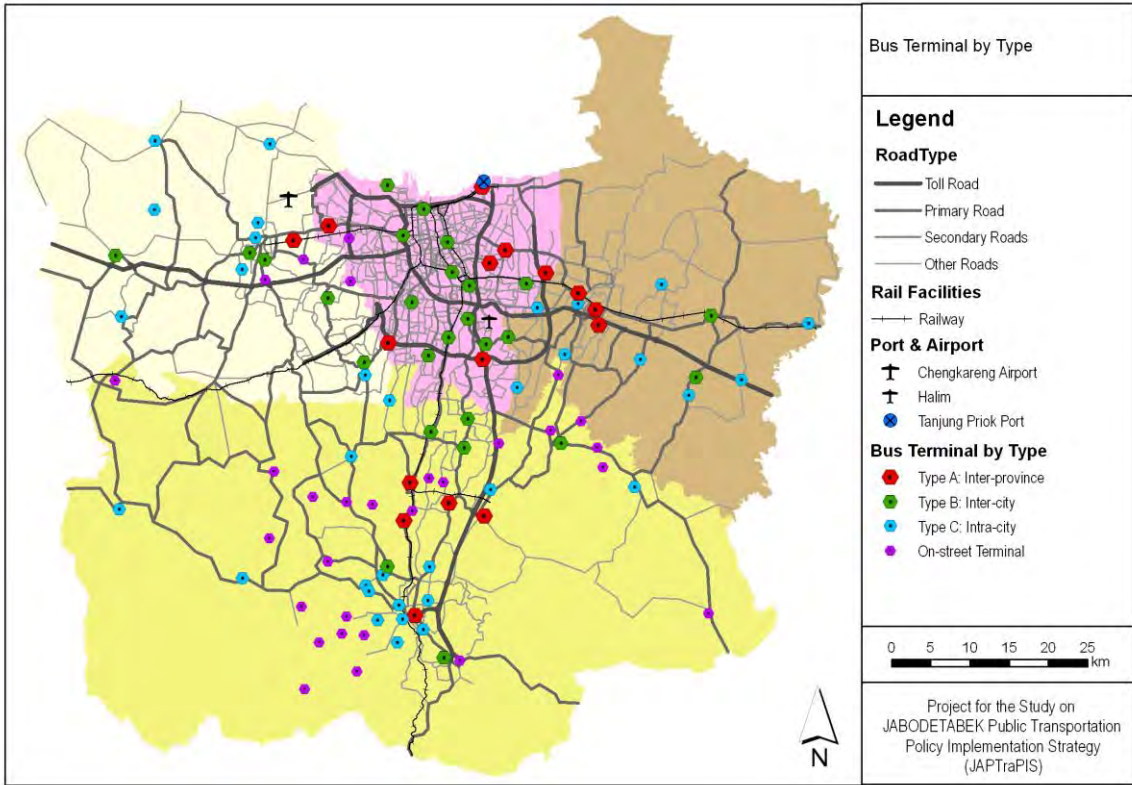
Gambar A1.13 Rencana Proyek Kereta Api JUTPI



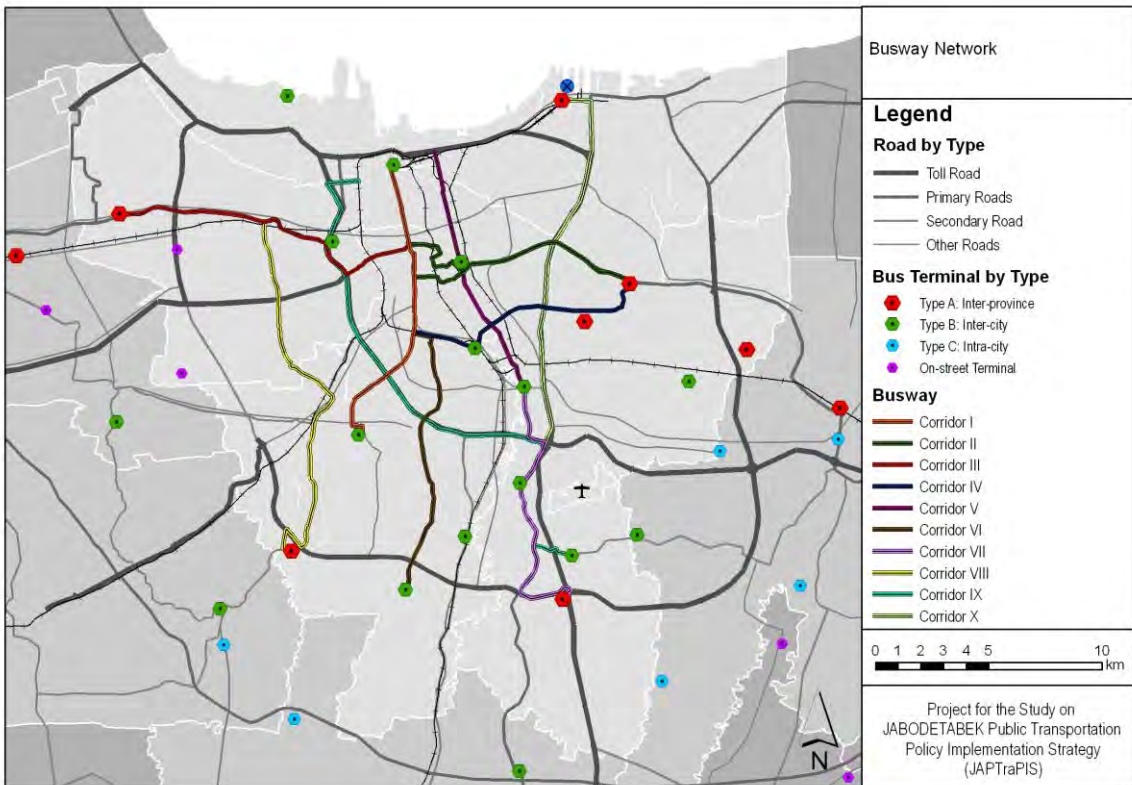
Gambar A1.14 Jaringan Busway



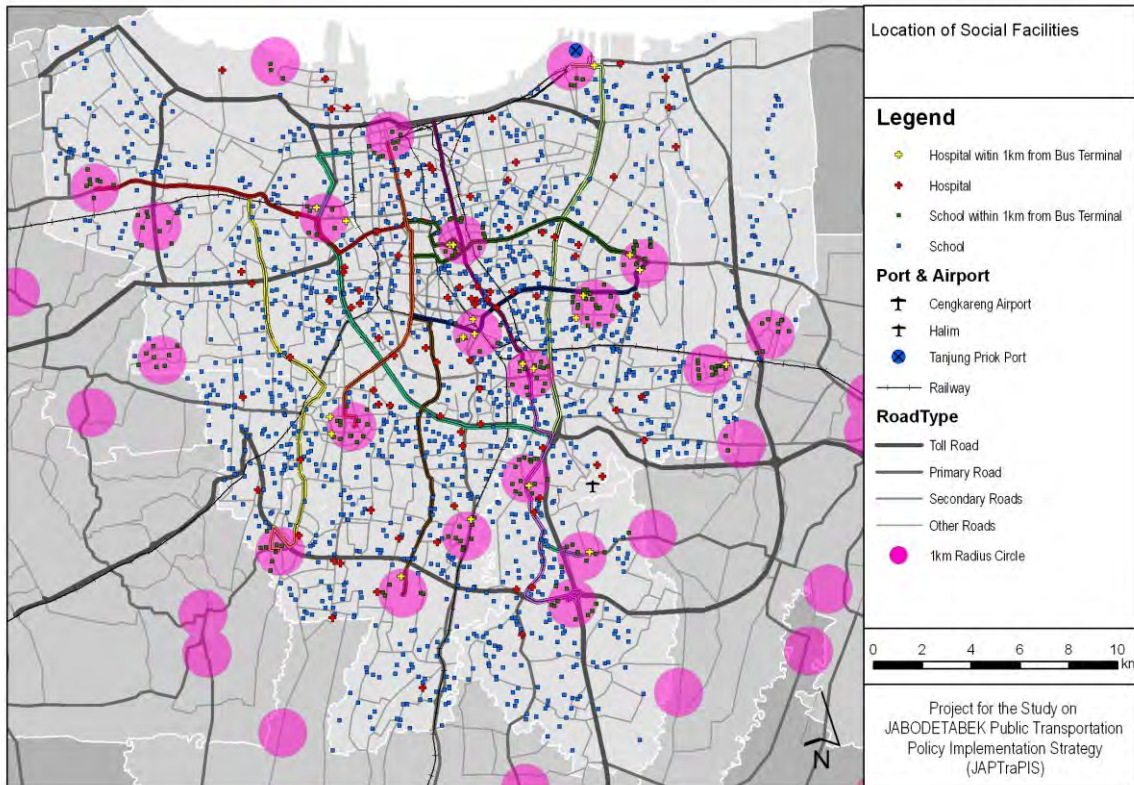
Gambar A1.15 Terminal Bus berdasarkan Tipe



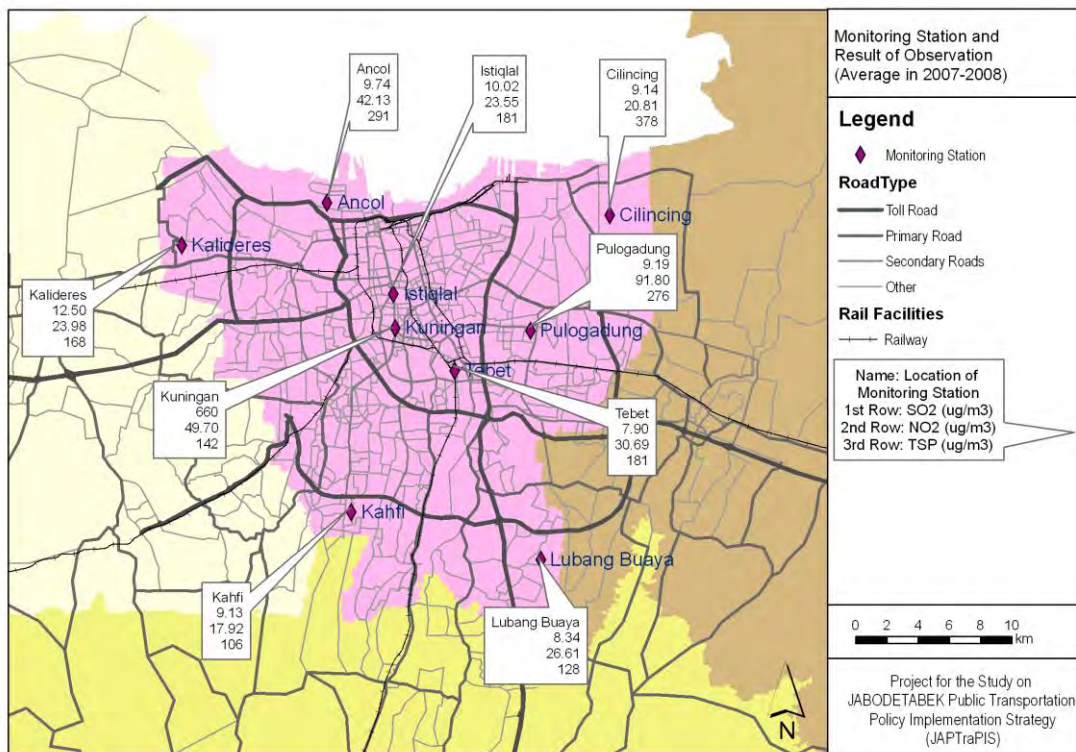
Gambar A1.16 Jaringan Busway dan Terminalnya di DKI Jakarta



Gambar A1.17 Fasilitas Sosial di DKI Jakarta 2002



Gambar A1.18 Stasiun Pengawasan Lingkungan dan Hasil Penelitian di DKI Jakarta 2007-2008



LAMPIRAN 2 : Program Counterpart Training di Jepang

Program counterpart training, “Urban Public Transportation Policy Implementation Strategy Focused on a Bus Transport” diselenggarakan dari 5 Feb sampai dengan 12 Feb 2012 di Jepang. Training ini bertujuan untuk pertukaran pengetahuan dan pengalaman tentang pembangunan angkutan umum di Jepang. Sebanyak 17 peserta dari DGLT dan pemerintah daerah turut berpartisipasi. Peserta pelatihan mengunjungi enam lembaga (organisasi) yang antara lain MLIT (Ministry of Land, Infrastructure, Transport and Tourism), Tokyo Metropolitan Bus, Tokyu Bus, Mitsubishi Heavy Industries, Transportation Bureau City of Nagoya dan Nagoya Guide Way Bus. Materi training dari setiap lembaga dijelaskan sebagai berikut.

MLIT; Kebijakan angkutan bus di Jepang, Peraturan mengenai angkutan bus pada tingkat pemerintah pusat, Langkah-langkah meningkatkan penumpang bus.

Tokyo Metropolitan Bus; Uraian tentang Tokyo Metropolitan Bus, Manajemen angkutan umum oleh pemerintah daerah, Subsidi, Sistem tiket terintegrasi, Jalur bus, Kunjungan ke terminal bus (Pintu barat Shinjuku station).

Tokyu Bus; Sistem lokasi bus, Cara mengatur rute bus, Pemeliharaan bus, Armada bus, Kunjungan ke bengkel pemeliharaan

Mitsubishi Heavy Industries; Electronic bus, Sistem bus rapid transit, Rencana ITS untuk mengatasi kemacetan (kepadatan) lalulintas di JABODETABEK

Transportation Bureau City of Nagoya; Situasi lalulintas di Nagoya, Uraian rute-rute kunci bus, Menaikki rute-rute kunci bus

Nagoya Guide Way Bus; Uraian mengenai Guide Way Bus, Menaikki Guide Way Bus

Jadwal program counterpart training dan daftar peserta training dapat dilihat pada Tabel A2.1 dan A2.2 di bawah ini.

Tabel A2.1 Jadwal Program Counterpart Training

Tanggal		Waktu	Agenda	Lokasi
5-Feb	Mgg	22:05 -	Depart from Soekarno-Hatta Airport (JL726)	Pesawat
6-Feb	Sen	- 7:15	Tiba di Narita Airport	Tokyo
		13:00 - 15:00	Orientasi di TIC, JICA Tokyo	
7-Feb	Sel	9:00 -	Berangkat dari Hotel	Tokyo
		9:45 - 11:00	MLIT (Kunjungan kehormatan, Pengajaran)	
		14:00 - 17:00	Tokyo Metropolitan Bus (Lecture) Integrated terminal in Tokyo (Site visit)	
8-Feb	Rab	9:00 -	Berangkat dari Hotel	Tokyo
		10:00 - 12:00	Tokyu Bus (Pengajaran)	
		14:40 - 20:00	Mitsubishi Heavy Industries (Pengajaran)	
9-Feb	Kam	10:00 - 13:30	Dari Tokyo ke Nagoya (Shinkansen)	Nagoya
		13:30 - 17:00	Kunjungan lapangan ke Nagoya	

10-Feb	Jum	8:30 -	Berangkat dari Hotel di Nagoya	Nagoya
		9:30 - 11:45	Transportation Bureau City of Nagoya (Pengajaran) Rapid Bus System in Nagoya (Kunjungan lapangan)	
		14:00 - 16:30	Nagoya Guideway Bus (Pengajaran • Kunjungan lapangan)	
11-Feb	Sab	8:15 - 12:00	Dari Nagoya ke Tokyo (Shinakansen)	Tokyo
		13:00 - 15:00	Rapat evaluasi di TIC, JICA Tokyo	
12-Feb	Mgg	11:20 -	Dari Narita Airport ke Soekarno-Hatta Airport	-

Tabel A2.2 Daftar Peserta Training

Nama	Organisasi
Ms. Elly Sinaga	Direktur Bina Sistem Transportasi Perkotaan, DGLT, MoT
Mr. Udar Pristono	Kepala Dinas Perhubungan, Provinsi DKI Jakarta
Mr. Dicky Saromi	Kepala Dinas Perhubungan, Provinsi Jawa Barat
Mr. Muhamad Husni Hasan	Kepala Dinas Perhubungan, Provinsi Banten
Mr. Suharto	Kepala Dinas Lalulintas dan Angkutan Jalan, Kota Bogor
Mr. Supandi Budiman	Kepala Dinas Perhubungan, Kota Bekasi
Mr. Dindin Djaenudin	Kepala Dinas Perhubungan, Kota Depok
Mr. Soebiantoro	Kepala Dinas Perhubungan, Kab. Bogor
Mr. Tuftana	Sekretaris Dinas Perhubungan, Kab. Bekasi
Mr. Karlo Manik	Wakil Direktur, Direktorat Bina Sistem Transportasi Perkotaan, DGLT, MoT
Mr. Rasyad Firdaus	Wakil Direktur, Direktorat Bina Sistem Transportasi Perkotaan, DGLT, MoT
Mr. Sugianto	Kepala Sub Divisi Sistem Informasi dan Pelaporan, Sekretariat DGLT/Divisi Perencanaan, DGLT, MoT
Mr. Iman Sukandar	Kepala Seksi Integrasi Transportasi Perkotaan untuk Regional I, Sub Direktorat Integrasi Transportasi Perkotaan, Direktorat Bina Sistem Transportasi Perkotaan, DGLT, MoT
Ms. Caroline Noorida Aryani	Kepala Seksi pada Sub Direktorat Angkutan Perkotaan, Direktorat Bina Sistem Transportasi Perkotaan, DGLT, MoT
Mr. Andi Putra Jaya	Staf Direktorat Bina Sistem Transportasi Perkotaan, DGLT, MoT
Ms. Ratry Febriana Amin	Staf Direktorat Bina Sistem Transportasi Perkotaan, DGLT, MoT
Mr. Firdaus Fanani	Staf Direktorat Bina Sistem Transportasi Perkotaan, DGLT, MoT

Atas dasar program training ini, "Tokyo commitment" kemudian dideklarasikan oleh peserta training. Komitmen tersebut mencakup upaya menyelenggarakan forum transportasi, menyusun rencana dan strategi implementasi untuk meningkatkan situasi lalulintas di kawasan JABODETABEK. Komitmen-komitmen tersebut secara lebih jelas dapat dilihat pada halaman berikutnya.

TOKYO COMMITMENT

JABODETABEK INTEGRITY CHALLENGE 2012

Yang bertandatangan di bawah ini, peserta program pelatihan, “Urban Public Transportation Policy Implementation Strategy Focused on a Bus Transport” yang diselenggarakan oleh pemerintah Jepang melalui Japan International Cooperation Agency (JICA) pada tanggal 6 s.d. 12 Februari 2012, di Jepang, yang bertindak untuk dan atas nama jabatan dan institusi masing-masing, dalam rangka meningkatkan kinerja penyelenggaraan transportasi di kawasan perkotaan Jakarta, Bogor, Depok, Tangerang, dan Bekasi (JABODETABEK).

Berdasarkan hasil pelatihan, diskusi dan peninjauan lapangan di Kota Tokyo dan Nagoya, Jepang, sebagai bahan acuan dan perbandingan dalam rangka penanganan transportasi perkotaan di kawasan aglomerasi JABODETABEK, maka dengan ini menyepakati beberapa hal sebagai berikut:

- 1) Membentuk Forum Transportasi Perkotaan (FTPJ) merupakan integrasi Forum Lalu Lintas dan Angkutan Jalan di masing-masing provinsi/kabupaten/kota dan akan melakukan pertemuan secara berkala setiap 2 (dua) bulan. Pembentukan FTP JABODETABEK ini dilakukan dengan tahap:
 - Tahap pertama, FTP JABODETABEK terdiri instansi Kementerian Perhubungan dan Satuan Kerja Perangkat Daerah bidang perhubungan (SKPD Perhubungan) di provinsi/kabupaten/kota;
 - Tahap kedua, FTP JABODETABEK terdiri dari instansi pada tahap pertama ditambah instansi Kementerian Pekerjaan Umum, Kepolisian Negara Republik Indonesia, dan SKPD lain yang terkait di provinsi/kabupaten/kota;
 - Tahap ketiga, FTP JABODETABEK terdiri dari instansi pada tahap kedua ditambah Kementerian Koordinator Bidang Perekonomian, BAPPENAS, dan akademisi serta Lembaga Swadaya Masyarakat;
- 2) Terlibat secara aktif menyusun dan menyepakati serta mengimplementasikan hasil studi JABODETABEK Public Transportation Policy Implementation Strategy (JAPTraPIS) sebagai konsep Rencana Induk Transportasi Perkotaan JABODETABEK;
- 3) Mengembangkan pelayanan, meningkatkan pelayanan dan memperluas area pelayanan angkutan umum massal berbasis jalan (Trans JABODETABEK yang terintegrasi dengan Trans Jakarta, Trans Pakuan, dan angkutan massal berbasis jalan lainnya), serta angkutan massal berbasis rel, di kawasan perkotaan JABODETABEK yang mengacu kepada hasil studi JAPTraPIS;
- 4) Menyusun rencana dan tahapan waktu implementasi perubahan manajemen, peremajaan, dan perubahan jenis angkutan kota untuk:
 - Jangka mendesak, dengan melakukan perubahan manajemen angkutan kota bus kecil (angkot) dan bus sedang yang berbentuk individual menjadi badan usaha, serta harus melakukan peremajaan kendaraan sesuai dengan ketentuan;

- Jangka pendek, dengan perubahan jenis angkutan kota bus kecil (angkot) menjadi angkutan kota bus sedang
- 5) Menata ulang trayek angkutan kota bus kecil dan bus sedang untuk dioperasikan sebagai pengumpan angkutan umum massal berbasis jalan, dan angkutan umum massal berbasis rel di kawasan perkotaan JABODETABEK;
- 6) Menata ulang dan membangun simpul-simpul integrasi moda angkutan umum massal berbasis jalan, angkutan umum massal berbasis rel, dan angkutan pengumpannya di kawasan perkotaan JABODETABEK, untuk kecepatan, kemudahan, dan kenyamanan perpindahan moda;
- 7) Menyusun rencana dan mengimplementasikan Intelligent Transport System (ITS) yang dapat diintegrasikan dengan ITS yang sedang dibangun dan dikembangkan oleh pemerintah provinsi DKI Jakarta;
- 8) Menyusun rencana dan mengimplementasikan kartu elektronik sebagai alat pembayaran (e-money) pada angkutan umum massal berbasis jalan dan angkutan umum massal berbasis rel di kawasan perkotaan JABODETABEK, berdasarkan standar e-money untuk angkutan umum yang sedang dan akan disusun berdasarkan kesepakatan bersama antara Bank Indonesia, Kementerian Perhubungan dan Kementerian Komunikasi dan Informatika;
- 9) Mengupayakan pengembangan Non Motorized Transportaton (NMT), seperti pengembangan area pejalan kaki dan jalur sepeda di kawasan perkotaan JABODETABEK.

Demikian komitmen ini dibuat dengan sebenarnya dan untuk dipergunakan sebagaimana mestinya.

Salinan Komitmen ini disampaikan kepada Direktur Jenderal Perhubungan Darat, Gubernur DKI Jakarta, Gubernur Jawa Barat, Gubernur Banten, Walikota Bogor, Bupati Bogor, Walikota Depok, Walikota Tangerang, Walikota Tangerang Selatan, Bupati Tangerang, Walikota Bekasi, dan Bupati Bekasi.

Tokyo, 11 Februari 2012

(Ditandatangani oleh semua anggota)

Gambar A2.1 Ministry of Land, Infrastructure, Transport and Tourism



Gambar A2.2 Tokyu Bus



LAMPIRAN 3 : DAFTAR PROYEK MASTERPLAN JAPTraPIS

Tabel A3.1 Daftar Proyek Masterplan JAPTraPIS

Proyek	Biaya (‘000 US\$)	Jadwal			Lembaga Pelaksana
		2012- 2013	2013- 2014	2015- 2020	
Integrated PT Network and Services					
P1. • Bank Indonesia to Senen two way BRT • Relocate Gambir 2 shelter • Bank Indonesia • Relocate Balaikota shelter	Implement Route 1, 2a, 6, 7, 14 L=30m, W=5m L=120m, W=5m, and footpath (20mx2.5m) L=60m, W=5m	2,077	○		TJ, DKI Jakarta
P2. • Pessing shelter • New shelter D. Atas 1 • D. Atas pedestrian underpath • D. Atas escalator • D. Atas 2 • Stasiun Cawan pedestrian improvement	L=60m, W=5m L=60m, W=5m L=40m, W=3.5m, H=2.5m L=60m, W=5m L=32m, W=2.5m	1,084	○		TJ, DKI Jakarta
P3. • Busway track (Jl.Matraman and Bekasi) • Matraman link new transfer station • D.Atas area traffic modification • Blok M terminal upgrade • Blok M pedestrian deck	Implement Route 3, 5, 11, 16a L=60m, W=5m L=30m, W=10m L=35m, W=180m L=400m, W=5m	5,482	○		TJ, DKI Jakarta
P4. • Kalideres shelter improvement	L-40m, W=8m Implement Route 2b, 25	175	○		TJ, DKI Jakarta
P5. • Kp. Melayu shelter modification	L=40m, W=5m (2 unit) Implement Route 4	218	○		TJ, DKI Jakarta
P6. • Corridor 1,2&3 upgrading (track) • Corridor 1,2&3 upgrading (shelter) • Corridor 1,2&3 upgrading (bridge floor)	L=34.9km 55 shelters (L=45m, W=5m each) 40 bridged (400m ² each)	17,917	○	○	TJ, DKI Jakarta
P7. • Pluit to Tj. Priok	Implement Route 12	13,907		○	TJ, DKI Jakarta
P8. • Implement Intermediate	Implement Intermediate Route 40, 44, 45, 46, 48	2,981		○	TJ, DKI Jakarta, Tangerang District

P9. · Harapan Indah extension	Implement Route 16	12,799		○		TJ, DKI Jakarta, Bekasi City
P10. · Corridor 11 extension to Bekasi terminal · Implement Intermediate	Implement Route 26 Implement Intermediate Route 47, 52, 54	15,904		○		TJ, DKI Jakarta, Bekasi City
P11. · Extension Tangerang	Implement Route 13a+13b, 2 (after 2015)	13,045		○	○	TJ, DKI Jakarta, Tangerang City
P12. · TentaraPelajar link	Implement Route 15	4,731		○		TJ, DKI Jakarta
P13. · Casablanca, Tn.Abang to Kp.Melayu	Implement Route 27	7,108			○	TJ, DKI Jakarta
P14. · Kyai Maja link to Kuningan		2,739			○	TJ, DKI Jakarta
P15. · Ciputat extension · Implement Intermediate	Implement Route 23 Implement Intermediate Route 41, 42	8,113			○	TJ, DKI Jakarta, Tangerang Selatan City, Depok City
P16. · BRT Tol. Serpong	Implement Route 24	8,294			○	TJ, DKI Jakarta, Tangerang Selatan City
P17. · Ciledug link and Cililitan link	Implement Route 8, 22	16,218			○	TJ, DKI Jakarta, Tangerang City
P18. · Develop Cawang UKI as main Transfer shelter	L=140m, W=5m	3,440			○	TJ, DKI Jakarta
P19. · Kalimalang Corridor · Implement Intermediate	Implement Route 9 Implement Intermediate Route 49	10,022			○	TJ, DKI Jakarta, Bekasi City
P20. · Jl. Tol Letnan Haryono to Manggarai		2,962			○	TJ, DKI Jakarta
P21. · Cibubur to Cawang via Toll Road	Implement Route 19	13,933			○	TJ, DKI Jakarta, Bogor District
P22. · Depok Baru to Toll link · Implement Intermediate	Implement Route 10 Implement Intermediate Route 43, 50, 51	8,851			○	TJ, DKI Jakarta, Depok City, Bekasi City, Bogor District

P23. · Jl. Raden Ajeng Kartini	Implement Route 21	8,861			○	TJ, DKI Jakarta
P24. · Sukamajo to Gedung	Implement Route 18	15,876			○	TJ, DKI Jakarta, Depok City
P25. · Depok Baru to Toll. MH Haryonoto	Implement Route 10	17,189			○	TJ, DKI Jakarta, Depok City
P26. · Tangerang to BSD	Implement Route 13	23,260			○	TJ, Tangerang City, Tangerang Selatan City
P27. · BSD to Harmoni via Kbn.Jeruk Toll Link	Implement Route 30	6,849			○	TJ, DKI Jakarta, Tangerang City, Tangerang Selatan City
P28. · BSD to Bank Indonesia via Tn.Abang new Toll link	Implement Route 29	4,273			○	TJ, DKI Jakarta, Tangerang Selatan City
P29. · Bekasi station to Setu · Implement Intermediate	Implement Route 17 Implement Intermediate Route 53	14,067			○	TJ, Bekasi City, Bogor District
P30. · Pulo Gadung to Bumi Anggrek	Implement Route 20	13,907			○	TJ, Bekasi City Bekasi District
P31. · Bogor Extension	Implement Route 31	3,077			○	TJ, Bogor City, Bogor District
Articulated Bus for Full BRT Routes	574 Buses	192,300	○	○		TJ
Articulated Bus for Full BRT Routes	1,107 Buses	370,800			○	TJ
Single Bus for intermediate Routes	277 Buses	72,000			○	TJ

Proyek		Biaya ('000 US\$)	Jadwal			Lembaga Pelaksana
			2012- 2013	2013- 2014	2015- 2020	
Infrastructure Development						
BRT Location System and Control Center						
· Equipment in Bus	1,100 Sets					
· LED indicator inside Bus	1,100 Sets					
· Radio System	1,100 Sets					
· Information Monitor at Bus Station	260 Sets	7,289	○	○		TJ
· Monitor at Control Center	20 Sets					
· PC sets	30 Sets					
· System Development and Server						
BRT Location System and Control Center						
· Equipment in Bus	1,400 Sets					
· LED indicator inside Bus	1,400 Sets	6,500			○	TJ
· Radio System	1,400 Sets					
· Information Monitor at Bus Station	180 Sets					
Bus Ticketing System						
· Automatic Gate at Shelter (2 gates/ shelter)	520 sets					
· Sales Terminal at Shelter	260 sets					
· System Development and Server						
· Handy Terminal in Intermediate Bus	160 sets	16,280	○	○		TJ
· Software Development for Intermediate Bus						
· Wireless LAN Equipment and Server for Intermediate Bus						
Bus Ticketing System						
· Automatic Gate at Shelter (2 gates/ shelter)	360 sets					
· Sales Terminal at Shelter	180 sets	4,200			○	TJ
· Handy Terminal in Intermediate Bus	120 sets					
Park & Ride Facility	Space:					
· Pinang Ranti	100	n.a.	○			TJ, DKI Jakarta, Bekasi City
· Pulo Gebang	100					
· Harapan Indah	300~					

Park & Ride Facility • Pluit • Tj.Priok • Ancol • Bekasi • Mergahayu • Cikokor	Space: 200 200 200 300~ 300~ 200	n.a.		○		TJ, DKI Jakarta, Bekasi City, Tangerang City
Park & Ride Facility • Telukpucung • Setu • Setos • Ciledug • BSD • Bintaro • Ciputat • Cibubur • Jatijajar • Depok Baru	Space: 300~ 300~ 300~ 300~ 300~ 300~ 200 300~ 200 300~	n.a.			○	TJ, Bekasi District, Bekasi City, Tangerang City, Tangerang Selatang City, Bogor District, Depok City,
Integrated/ Multimodal Terminal • Kota • Dukuh Atas 1&2 • Blok M • Lebak Bulus • Pulo Gebang • Pulo Gadung • Grogol • Kalideres		n.a.	○	○		TJ, DKI Jakarta
Integrated/ Multimodal Terminal • Tj. Priok • Gambir • Senen • Manggarai • Pasar Minggu • Kp. Melayu • Station Bekasi • Terminal Bekasi • Cawan • Poris Plawad • Rw. Buntu • Depok Baru		n.a.			○	TJ, DKI Jakarta, Bekasi City, Tangerang City, Tangerang Selatang City, Depok City
Cycle and Walking Facilities		n.a.	○	○	○	All Local Governments

Proyek	Biaya ('000 US\$)	Jadwal			Lembaga Pelaksana
		2012- 2013	2013- 2014	2015- 2020	
Establishment of Trans Jabodetabek					
Establishment of JTA	n.a.	○			Central Government
Institutional Design	n.a.	○			JTA
Establishment and Operation	n.a.		○		JTA

Proyek	Biaya ('000 US\$)	Jadwal			Lembaga Pelaksana
		2012- 2013	2013- 2014	2015- 2020	
Reforming Bus Management System					
Minimum Service Standards	n.a.		○	○	DGLT, JTA, All Local Governments
Rejuvenation of Bus Fleets	n.a.	○	○	○	DGLT, JTA, All Local Governments
Restructuring General Bus Licensing	n.a.		○	○	DGLT, JTA, All Local Governments
Institutional and Capacity Building	TA		○		DGLT, JTA, All Local Governments

Catatan: JTA: JABODETABEK Transportation Agency, TJ: TransJabodetabek (Regional BRT Agency under JTA),
 TA: Technical Assistance (funded by Official Development Assistance)