

Appendices

APPENDIX 1 : PUBLIC TRANSPORT PLANNING DATABASE

A database which is composed of useful and organized data for public transport planning is essential to grasp overall condition of the study areas and specific fields and to utilize for demand analyses. The data which is collected and developed throughout the study process is compiled into a Public Transport Planning Database.

1) Structure of Database

Public Transport Planning Database is composed of three categories, those are (1) Base Map and Basic Indicators, (2) Transport Planning and (3) Laws/Regulations. “Base Map and Basic Indicators” includes geographical data in GIS format which is applicable to ArcGIS and is suitable for analyses of existing condition in the Study Area. “Transport Planning” includes transport network and traffic volume data which is applicable to CUBE and is suitable for demand forecast. “Laws/Regulations” includes full text of laws/regulations that are related this study.

(1) Base Map and Basic Indicators

The data in Base Map and Basic Indicators is mainly collected from JUTPI GIS database, census, relating documents and field survey by Study Team. It covers 1) Study Area Condition, 2) Socio-economic Indicators, 3) Transport Facilities, 4) Public Transport Facilities and 5) Other Facilities. Figures shown in this report are covering JABODETABEK and showing existing situation in 2010, otherwise it's specially noted.

Table A1.1 List of Figures of Base Map and Basic Indicators

Fields	Items	Figure No.
1) Study Area Condition	Study Area in Indonesia	Figure A1.1
	Study Area of JABODETABEK	Figure A1.2
	Spatial Planning in Study Area (RTRW Jabodetabekpunjur)	Figure A1.3
	Existing Landuse	Figure A1.4
	Water System	Figure A1.5
	Land Subsidence	Figure A1.6
2) Socio-economic Indicators	Population Density by Census Kelurahan	Figure A1.7
	Gender Balance by Census Kelurahan	Figure A1.8
3) Transport Facilities	Road Network by Class	Figure A1.9
	Road Network by Capacity	Figure A1.10
	Flyovers in DKI Jakarta	Figure A1.11
	Planned Roads by JUTPI	Figure A1.12
	Planned Railway Projects by JUTPI	Figure A1.13
4) Public Transport Facilities	Busway Network	Figure A1.14
	Bus Terminals by Type	Figure A1.15
	Busway Network and Bus Terminals by Type in DKI Jakarta	Figure A1.16
5) Other Facilities	Social Facilities in DKI Jakarta in 2002	Figure A1.17
	Environmental Monitoring Station and Result of Observation in DKI Jakarta in 2007-2008	Figure A1.18

(2) Transport Planning

The data in Transport Planning is collected from JUTPI and the public transportation surveys which were conducted by JAPTraPIS. It covers 6) Public Transportation Survey,

7) OD Table, 8) Network, 9) Public Transportation Line Data, 10) Zone System and 11) Other Parameters.

(3) Laws/Regulations

The data regarding the Indonesian laws/regulations were collected from central government, local governments and organizations. It covers general laws/regulations, road transport general laws/regulations, public transport (BUS) laws/regulations, infrastructure laws/regulations, institutional laws/regulations, environment laws/regulations and others.

2) List of Data Files

The data files in the public transport planning database are shown in Table A1.2. The files are categorized in “Items” field, the data files which are consist of the “.xlsx”, “.shp” etc. format are listed in “Related File Name” field, the location of files are shown in “Folder Location” field.

Table A1.2 List of Data Files of Base Map and Basic Indicators

Fields	Items	Related File Name	Folder Location
Base Map and Basic Indicators			
1) Study Area Condition	Study Area in Indonesia	JABODETABEK.shp	/JAPTraPIS_PTDATABASE/GIS/1_StudyArea/
		MajorCities_PKN.shp	/JAPTraPIS_PTDATABASE/GIS/1_StudyArea/
		ProvincialBoundaries.shp	/JAPTraPIS_PTDATABASE/GIS/1_StudyArea/
	Study Area of JABODETABEK	Boundary_Kerulahan_Pop.shp	/JAPTraPIS_PTDATABASE/GIS/1_StudyArea/
		Boundary_Kabupaten.shp	/JAPTraPIS_PTDATABASE/GIS/1_StudyArea/
	Spatial Planning in Study Area (RTRW Jabodetabekpunjur)	Zoning_RTRWJ.shp	/JAPTraPIS_PTDATABASE/GIS/1_StudyArea/
		Roads&Railway_Existing_RTRWJ.shp	/JAPTraPIS_PTDATABASE/GIS/1_StudyArea/
		Roads&Railway_Planned_RTRWJ.shp	/JAPTraPIS_PTDATABASE/GIS/1_StudyArea/
		CityCenter_Planned_RTRWJ.shp	/JAPTraPIS_PTDATABASE/GIS/1_StudyArea/
	Existing Landuse	Landuse_Existing.shp	/JAPTraPIS_PTDATABASE/GIS/1_StudyArea/
Water System	River.shp	/JAPTraPIS_PTDATABASE/GIS/1_StudyArea/	
Land Subsidence	LandSubsidence_DKIJakarta.shp	/JAPTraPIS_PTDATABASE/GIS/1_StudyArea/	
2) Socio-economic Indicators	Population Density by Census Kelurahan	Boundary_Kerulahan_Pop.shp	/JAPTraPIS_PTDATABASE/GIS/1_StudyArea/
	Gender Balance by Census Kelurahan	Boundary_Kerulahan_Pop.shp	/JAPTraPIS_PTDATABASE/GIS/1_StudyArea/
3) Transport Facilities	Road Network by Class	RoadNetwork_JUTPI2010.shp	/JAPTraPIS_PTDATABASE/GIS/3_Transport/
		Port_Airport_JUTPI2010.shp	/JAPTraPIS_PTDATABASE/GIS/3_Transport/
	Road Network by Capacity	RoadNetwork_JUTPI2010.shp	/JAPTraPIS_PTDATABASE/GIS/3_Transport/

	Flyovers in DKI Jakarta	Flyover_DKIJakarta_2002.shp	/JAPTraPIS_PTDATABASE/GIS/3_Transport/
	Planned Roads by JUTPI	RoadProjects_Planned_JUTPI_2011.shp	/JAPTraPIS_PTDATABASE/GIS/3_Transport/
	Planned Railway Projects by JUTPI	Railway_Existing.shp	/JAPTraPIS_PTDATABASE/GIS/3_Transport/
		MRT_Planned_JUTPI_2011.	/JAPTraPIS_PTDATABASE/GIS/3_Transport/
		PlannedMonorail_JUTPI_2011.shp	/JAPTraPIS_PTDATABASE/GIS/3_Transport/
4) Public Transport Facilities	Busway Network	Busway_Existing_2011.shp	/JAPTraPIS_PTDATABASE/GIS/4_PublicTransport/
	Bus Terminals by Type	BusTerminal_Existing_2011.shp	/JAPTraPIS_PTDATABASE/GIS/4_PublicTransport/
	Busway Network and Bus Terminals by Type in DKI Jakarta	Busway_Existing_2011.shp	/JAPTraPIS_PTDATABASE/GIS/4_PublicTransport/
		BusTerminal_Existing_2011.shp	/JAPTraPIS_PTDATABASE/GIS/4_PublicTransport/
5) Other Facilities	Social Facilities in DKI Jakarta in 2002	Hospital_2002.shp	/JAPTraPIS_PTDATABASE/GIS/5_Others/
		School_2002.shp	/JAPTraPIS_PTDATABASE/GIS/5_Others/
		Hospital_2002_Buffer1km.shp	/JAPTraPIS_PTDATABASE/GIS/5_Others/
		School_2002_Buffer1km.shp	/JAPTraPIS_PTDATABASE/GIS/5_Others/
	Environmental Monitoring Station and Result of Observation in DKI Jakarta in 2007-2008	EnvironmentalMonitoringStation.shp	/JAPTraPIS_PTDATABASE/GIS/5_Others/
Transport Planning			
1) Public Transportation Survey	Busway Count Data	Bus_Count(busway).xlsx	/JAPTraPIS_PTDATABASE/Survey Data/Bus Vehicle and Passenger Traffic Count Survey/Busway Count/
	Ordinary Bus Count Data	Bus_Count(bus).xlsx	/JAPTraPIS_PTDATABASE/Survey Data/Bus Vehicle and Passenger Traffic Count Survey/Ordinary Bus Count/
	Bus Route Operation Data	Bus_Operation.xlsx	JAPTraPIS_PTDATABASE/Survey Data/Bus Route Operation Survey/
	Public Transportation Passenger Interview	Passenger interview survey input.xlsx	JAPTraPIS_PTDATABASE/Survey Data/Passenger interview survey/
	Public Transportation Driver Interview	Driver interview survey input.xlsx	JAPTraPIS_PTDATABASE/Survey Data/Driver Operator interview survey/
	Public Transportation Operator Interview	Operator interview survey.xlsx	JAPTraPIS_PTDATABASE/Survey Data/Driver Operator interview survey/
2) OD Table	OD Table (Car/High income/Year 2010)	CAR-H-VT_S10.csv	JAPTraPIS_PTDATABASE/CUBE/OD Table/Yr2010-S10/

OD Table (Car/Middle/income/Year 2010)	CAR-M-VT_S10.csv	JAPTraPIS_PTDATABASE/ CUBE/OD Table/Yr2010-S10/
OD Table (Car/Low income/Year 2010)	CAR-L-VT_S10.csv	JAPTraPIS_PTDATABASE/ CUBE/OD Table/Yr2010-S10/
OD Table (Motorcycle/High income/Year 2010)	MC-H-VT_S10.csv	JAPTraPIS_PTDATABASE/ CUBE/OD Table/Yr2010-S10/
OD Table (Motorcycle/Middle income/Year 2010)	MC-M-VT_S10.csv	JAPTraPIS_PTDATABASE/ CUBE/OD Table/Yr2010-S10/
OD Table (Motorcycle/Low income/Year 2010)	MC-L-VT_S10.csv	JAPTraPIS_PTDATABASE/ CUBE/OD Table/Yr2010-S10/
OD Table (Public Transportation/High income/Year 2010)	PUB-H_S10.csv	JAPTraPIS_PTDATABASE/ CUBE/OD Table/Yr2010-S10/
OD Table (Public Transportation/Middle income/Year 2010)	PUB-M_S10.csv	JAPTraPIS_PTDATABASE/ CUBE/OD Table/Yr2010-S10/
OD Table (Public Transportation/Low income/Year 2010)	PUB-L_S10.csv	JAPTraPIS_PTDATABASE/ CUBE/OD Table/Yr2010-S10/
OD Table (Large Truck/Year 2010)	TRK-LG-VT_S10.csv	JAPTraPIS_PTDATABASE/ CUBE/OD Table/Yr2010-S10/
OD Table (Small Truck/Year 2010)	TRK-SM-VT_S10.csv	JAPTraPIS_PTDATABASE/ CUBE/OD Table/Yr2010-S10/
OD Table (Car/High income/Year 2014)	CAR-H-VT_S14.csv	JAPTraPIS_PTDATABASE/ CUBE/OD Table/Yr2014-S14/
OD Table (Car/Middle income/Year 2014)	CAR-M-VT_S14.csv	JAPTraPIS_PTDATABASE/ CUBE/OD Table/Yr2014-S14/
OD Table (Car/Low income/Year 2014)	CAR-L-VT_S14.csv	JAPTraPIS_PTDATABASE/ CUBE/OD Table/Yr2014-S14/
OD Table (Motorcycle/High income/Year 2014)	MC-H-VT_S14.csv	JAPTraPIS_PTDATABASE/ CUBE/OD Table/Yr2014-S14/
OD Table (Motorcycle/Middle income/Year 2014)	MC-M-VT_S14.csv	JAPTraPIS_PTDATABASE/ CUBE/OD Table/Yr2014-S14/
OD Table (Motorcycle/Low income/Year 2014)	MC-L-VT_S14.csv	JAPTraPIS_PTDATABASE/ CUBE/OD Table/Yr2014-S14/
OD Table (Public Transportation High income Year 2014)	PUB-H_S14.csv	JAPTraPIS_PTDATABASE/ CUBE/OD Table/Yr2014-S14/
OD Table (Public Transportation Middle income Year 2014)	PUB-M_S14.csv	JAPTraPIS_PTDATABASE/ CUBE/OD Table/Yr2014-S14/
OD Table (Public Transportation/Low income/Year 2014)	PUB-L_S14.csv	JAPTraPIS_PTDATABASE/ CUBE/OD Table/Yr2014-S14/
OD Table (Large Truck/Year 2014)	TRK-LG-VT_S14.csv	JAPTraPIS_PTDATABASE/ CUBE/OD Table/Yr2014-S14/

OD Table (Small Truck/Year 2014)	TRK-SM-VT_S14.csv	JAPTraPIS_PTDATABASE/ CUBE/OD Table/Yr2014-S14/
OD Table (Car High income Year 2020 Do Nothing Case)	CAR-H-VT_S20.csv	JAPTraPIS_PTDATABASE/ CUBE/OD Table/Yr2020-S20/
OD Table (Car/Middle income/Year 2020/Do Nothing Case)	CAR-M-VT_S20.csv	JAPTraPIS_PTDATABASE/ CUBE/OD Table/Yr2020-S20/
OD Table (Car/Low income/Year 2020/ Do Nothing Case)	CAR-L-VT_S20.csv	JAPTraPIS_PTDATABASE/ CUBE/OD Table/Yr2020-S20/
OD Table (Motorcycle/High income/Year 2020/ Do Nothing Case)	MC-H-VT_S20.csv	JAPTraPIS_PTDATABASE/ CUBE/OD Table/Yr2020-S20/
OD Table (Motorcycle/Middle income/Year 2020/ Do Nothing Case)	MC-M-VT_S20.csv	JAPTraPIS_PTDATABASE/ CUBE/OD Table/Yr2020-S20/
OD Table (Motorcycle/Low income/Year 2020/ Do Nothing Case)	MC-L-VT_S20.csv	JAPTraPIS_PTDATABASE/ CUBE/OD Table/Yr2020-S20/
OD Table (Public Transportation/High income/Year 2020/ Do Nothing Case)	PUB-H_S20.csv	JAPTraPIS_PTDATABASE/ CUBE/OD Table/Yr2020-S20/
OD Table (Public Transportation/Middle income/Year 2020/Do Nothing Case)	PUB-M_S20.csv	JAPTraPIS_PTDATABASE/ CUBE/OD Table/Yr2020-S20/
OD Table (Public Transportation/Low income/Year 2020/ Do Nothing Case)	PUB-L_S20.csv	JAPTraPIS_PTDATABASE/ CUBE/OD Table/Yr2020-S20/
OD Table (Large Truck/Year 2020/ Do Nothing Case)	TRK-LG-VT_S20.csv	JAPTraPIS_PTDATABASE/ CUBE/OD Table/Yr2020-S20/
OD Table (Small Truck Year 2020 Do Nothing Case)	TRK-SM-VT_S20.csv	JAPTraPIS_PTDATABASE/ CUBE/OD Table/Yr2020-S20/
OD Table (Car/High income/Year 2020/ Do Nothing Case)	CAR-H-VT_S22.csv	JAPTraPIS_PTDATABASE/ CUBE/OD Table/Yr2020-S22/
OD Table (Car/Middle/income Year 2020/ Do Something Case)	CAR-M-VT_S22.csv	JAPTraPIS_PTDATABASE/ CUBE/OD Table/Yr2020-S22/
OD Table (Car/Low income /Year 2020/ Do Something Case)	CAR-L-VT_S22.csv	JAPTraPIS_PTDATABASE/ CUBE/OD Table/Yr2020-S22/
OD Table (Motorcycle/High income/Year 2020/ Do Something Case)	MC-H-VT_S22.csv	JAPTraPIS_PTDATABASE/ CUBE/OD Table/Yr2020-S22/
OD Table (Motorcycle/Middle income/Year 2020/ Do Something Case)	MC-M-VT_S22.csv	JAPTraPIS_PTDATABASE/ CUBE/OD Table/Yr2020-S22/

	OD Table (Motorcycle/Low income/Year 2020/ Do Something Case)	MC-L-VT_S22.csv	JAPTraPIS_PTDATABASE/ CUBE/OD Table/Yr2020-S22/
	OD Table (Public Transportation/High income/Year 2020/ Do Something Case)	PUB-H_S22.csv	JAPTraPIS_PTDATABASE/ CUBE/OD Table/Yr2020-S22/
	OD Table (Public Transportation/Middle income/Year 2020/Do Something Case)	PUB-M_S22.csv	JAPTraPIS_PTDATABASE/ CUBE/OD Table/Yr2020-S22/
	OD Table (Public Transportation/Low income/Year 2020/ Do Something Case)	PUB-L_S22.csv	JAPTraPIS_PTDATABASE/ CUBE/OD Table/Yr2020-S22/
	OD Table (Large Truck/Year 2020/ Do Something Case)	TRK-LG-VT_S22.csv	JAPTraPIS_PTDATABASE/ CUBE/OD Table/Yr2020-S22/
	OD Table (Small Truck/Year 2020/ Do Something Case)	TRK-SM-VT_S22.csv	JAPTraPIS_PTDATABASE/ CUBE/OD Table/Yr2020-S22/
3) Network	Master Network	MODIF_NET_907.net	JAPTraPIS_PTDATABASE/ CUBE/Network/
4) Public Transportation Line Data	Public Transportation Line Data (2010)	PTLINE2010-S10.lin	JAPTraPIS_PTDATABASE/ CUBE/PT Line/
	Public Transportation Line Data (2014)	PTLINE2014-S14.lin	JAPTraPIS_PTDATABASE/ CUBE/PT Line/
	Public Transportation Line Data (2020)	PTLINE2020-S22.lin	JAPTraPIS_PTDATABASE/ CUBE/PT Line/
5) Zone System	Zone System	Zone_Sys.shp	JAPTraPIS_PTDATABASE/ /CUBE/Zone/
6) Other Parameters	Penalty File	TURN_PEN.pen	JAPTraPIS_PTDATABASE/ /CUBE/Parameter/
	Public Transportation System File (2010)	PT_System2010.pts	JAPTraPIS_PTDATABASE/ /CUBE/Parameter/
	Public Transportation System File (2020)	PT_System2020.pts	JAPTraPIS_PTDATABASE/ /CUBE/Parameter/
	Public Transportation System Fare File (2010)	PT_Fare2010.far	JAPTraPIS_PTDATABASE/ /CUBE/Parameter/
	Public Transportation System Fare File (2014)	PT_Fare2014.far	JAPTraPIS_PTDATABASE/ /CUBE/Parameter/
	Public Transportation System Fare File (2020)	PT_Fare2020.far	JAPTraPIS_PTDATABASE/ /CUBE/Parameter/
	Zone Fare Matrix for Railway	RAIL_FARE_2010.MAT	JAPTraPIS_PTDATABASE/ /CUBE/Parameter/
	Public Transportation Factors File (2010)	PT_Factor2010.fac	JAPTraPIS_PTDATABASE/ /CUBE/Parameter/
	Public Transportation Factors File (2020)	PT_Factor2020.fac	JAPTraPIS_PTDATABASE/ /CUBE/Parameter/
Laws/ Regulations			
1) Laws/ Regulations	General	Perda01 Year2008 Mid-term Development Plan 2007-2012 (JKT) (IND).doc	JAPTraPIS_PTDATABASE/ Laws/General/
		Perda12 Year2003 Traffic, Road Transport and Rail (JKT) (IND).doc	JAPTraPIS_PTDATABASE/ Laws/General/

		PerGub103 Year2007 PTM Macro (JKT) (IND).doc	JAPTraPIS_PTDATABASE/Laws/General/
		Perpres12 Year 2012 Fuel Retail Price (ENG)	JAPTraPIS_PTDATABASE/Laws/General/
		Perpres21 Year2011 MP3EI (IND).doc	JAPTraPIS_PTDATABASE/Laws/General/
		Perpres54 Year2008 JABODETABEKPUNJUR (IND).pdf	JAPTraPIS_PTDATABASE/Laws/General/
		Perpres54 Year2008 Jabodetabekpunjur Spatial Planning (IND).docx	JAPTraPIS_PTDATABASE/Laws/General/
		Perpres68 Year2005 Procedures for Preparing the Bill (ENG)	JAPTraPIS_PTDATABASE/Laws/General/
		PMK175 Year2009 Alokasi dan Pedoman DAK TA 2010 (IND).doc	JAPTraPIS_PTDATABASE/Laws/General/
		PP15 Year2005 Toll Road (IND).docx	JAPTraPIS_PTDATABASE/Laws/General/
		PP26 Year1985 Road (IND).docx	JAPTraPIS_PTDATABASE/Laws/General/
		PP34 Year2006 Road (Elucidation) (IND).doc	JAPTraPIS_PTDATABASE/Laws/General/
		PP34 Year2006 Road (IND).doc	JAPTraPIS_PTDATABASE/Laws/General/
		PP56 Year2009 Railway (IND).pdf	JAPTraPIS_PTDATABASE/Laws/General/
		PP65 Year2001 Regional Tax (ENG)	JAPTraPIS_PTDATABASE/Laws/General/
		PP72 Year2009 Traffic and Railway (IND).pdf	JAPTraPIS_PTDATABASE/Laws/General/
		UU17 Year2003 State Finance (IND).docx	JAPTraPIS_PTDATABASE/Laws/General/
		UU38 Year2004 Road (Elucidation) (IND).docx	JAPTraPIS_PTDATABASE/Laws/General/
		UU38 Year2004 Road (IND).doc	JAPTraPIS_PTDATABASE/Laws/General/
	Road Transport - General	KM14 Year2006 Manajemen dan Rekayasa Lalu Lintas di Jalan (IND).pdf	JAPTraPIS_PTDATABASE/Laws/RoadTransport-General/
		KM35 Year2003 Appendix 1 (IND).pdf	JAPTraPIS_PTDATABASE/Laws/RoadTransport-General/
		KM35 Year2003 Appendix 2 (IND).pdf	JAPTraPIS_PTDATABASE/Laws/RoadTransport-General/
		KM35 Year2003 Appendix 3 (IND).pdf	JAPTraPIS_PTDATABASE/Laws/RoadTransport-General/
		KM35 Year2003 Appendix 4 (IND).pdf	JAPTraPIS_PTDATABASE/Laws/RoadTransport-General/
		KM52 Year2006 Economy Class Fair Calculation (IND).pdf	JAPTraPIS_PTDATABASE/Laws/RoadTransport-General/

	Perda05 Year1999 Parking (JKT) (IND).doc	JAPTraPIS_PTDatabese/ Laws/RoadTransport- General/
	PerGub27 Year2011 MRT Corridor One (IND).doc	JAPTraPIS_PTDatabese/ Laws/RoadTransport- General/
	PP08 Year2011 Multimodal Transport (IND).pdf	JAPTraPIS_PTDatabese/ Laws/RoadTransport- General/
	PP32 Year2011 Engineering Management and Traffic (IND).doc	JAPTraPIS_PTDatabese/ Laws/RoadTransport- General/
	PP37 Year2011 Transport Forum and Road Transport (IND).doc	JAPTraPIS_PTDatabese/ Laws/RoadTransport- General/
	PP41 Year1993 Road Transport (Elucidation) (IND).docx	JAPTraPIS_PTDatabese/ Laws/RoadTransport- General/
	PP41 Year1993 Road Transport (IND).docx	JAPTraPIS_PTDatabese/ Laws/RoadTransport- General/
	PP42 Year1993 Vehicle Inspection on Road (IND).docx	JAPTraPIS_PTDatabese/ Laws/RoadTransport- General/
	PP43 Year1993 Infrastructure and Road Traffic (IND).doc	JAPTraPIS_PTDatabese/ Laws/RoadTransport- General/
	PP44 Year1993 Vehicle and Driver (IND).pdf	JAPTraPIS_PTDatabese/ Laws/RoadTransport- General/
	RPP Forum Lalu Lintas (IND).doc	JAPTraPIS_PTDatabese/ Laws/RoadTransport- General/
	RPP Kendaraan (IND).pdf	JAPTraPIS_PTDatabese/ Laws/RoadTransport- General/
	RPP Manajemen dan Rekayasa Lalu Lintas (IND).pdf	JAPTraPIS_PTDatabese/ Laws/RoadTransport- General/
	RPP MRLL 24 Maret 2011 (IND).doc	JAPTraPIS_PTDatabese/ Laws/RoadTransport- General/
	RPP MRLL 24 Maret 2011(Elucidation) (IND).doc	JAPTraPIS_PTDatabese/ Laws/RoadTransport- General/
	RPP RIKRANMOR (IND).pdf	JAPTraPIS_PTDatabese/ Laws/RoadTransport- General/
	RPP Tata Cara Pemeriksaan (IND).doc	JAPTraPIS_PTDatabese/ Laws/RoadTransport- General/
	UU14 Year1992 Traffic and Road Transport (IND).doc	JAPTraPIS_PTDatabese/ Laws/RoadTransport- General/
	UU22 Year2009 Traffic and Road Transportation (IND).docx	JAPTraPIS_PTDatabese/ Laws/RoadTransport- General/
	UU23 Year2007 Railway (Elucidation) (IND).docx	JAPTraPIS_PTDatabese/ Laws/RoadTransport- General/

		UU23 Year2007 Railway (IND).pdf	JAPTraPIS_PTDATABASE/Laws/RoadTransport-General/
Public Transport (BUS)		KM35 Year2003 Public Passenger Vehicle Transportation on Road (IND).docx	JAPTraPIS_PTDATABASE/Laws/RoadTransport-BUS/
		KM84 Year1999 Implementation of General Bus (IND).doc	JAPTraPIS_PTDATABASE/Laws/RoadTransport-BUS/
		PerGub04 Year2009 Tarif Angkutan Penumpang Dengan Mobil Bus Umum (JKT) (IND).pdf	JAPTraPIS_PTDATABASE/Laws/RoadTransport-BUS/
		PerGub108 Year2010 Transjakarta Busway Personnel Performance Measure (IND).doc	JAPTraPIS_PTDATABASE/Laws/RoadTransport-BUS/
		PP23 Year2005 BLU Financial Management (IND).doc	JAPTraPIS_PTDATABASE/Laws/RoadTransport-BUS/
	Infrastructure		PerGub10 Year2010 Road Transport Terminal Management Unit (IND).doc
		PerGub48 Year2004 Off-street Parking Space (IND).doc	JAPTraPIS_PTDATABASE/Laws/Infrastructure/
Institutional		Perda07 Year2010 Building Construction (JKT) (IND).doc	JAPTraPIS_PTDATABASE/Laws/Institutional/
		Perda08 Year2010 Motor Vehicle Tax (JKT) (IND).doc	JAPTraPIS_PTDATABASE/Laws/Institutional/
		Perda09 Year2010 Vehicle Registration Tax (JKT) (IND).doc	JAPTraPIS_PTDATABASE/Laws/Institutional/
		Perda10 Year2008 Regional Government Organization (JKT) (IND).doc	JAPTraPIS_PTDATABASE/Laws/Institutional/
		Perda10 Year2010 Motor Vehicle Fuel Tax (JKT) (IND).doc	JAPTraPIS_PTDATABASE/Laws/Institutional/
		PerGub140 Year2010 Calculation of Motor Vehicle Tax after Vehicle in 2010 (IND).doc	JAPTraPIS_PTDATABASE/Laws/Institutional/
		PerGub154 Year2007 Technical Instruction for Regional Levy (IND).doc	JAPTraPIS_PTDATABASE/Laws/Institutional/
		PerGub16 Year2009 Exemption of Regional Levy to Public Transport Economy Class (IND).doc	JAPTraPIS_PTDATABASE/Laws/Institutional/
		PerGub16 Year2010 Parking Tax (IND).doc	JAPTraPIS_PTDATABASE/Laws/Institutional/

		PerGub160 Year2007 Technical Guidelines for Parking Fee Collection (IND).doc	JAPTraPIS_PTDATABASE/ Laws/Institutional/
		PerGub166 Year2009 Calculation of Motor Vehicle Tax after Vehicle in 2009 (IND)..doc	JAPTraPIS_PTDATABASE/ Laws/Institutional/
		PerGub48 Year2006 Transjakarta Busway Organization (IND).doc	JAPTraPIS_PTDATABASE/ Laws/Institutional/
		PerGub50 Year2008 Passenger Transport Rate (IND).doc	JAPTraPIS_PTDATABASE/ Laws/Institutional/
		PerGub83 Year2007 Payment Mechanism of Busway Service (IND).doc	JAPTraPIS_PTDATABASE/ Laws/Institutional/
		Permen ESDM No.19 Year 2010 BBG for Transportation (IND).doc	JAPTraPIS_PTDATABASE/ Laws/Institutional/
		Perpres36 Year2011 Gasoline Tax (IND).doc	JAPTraPIS_PTDATABASE/ Laws/Institutional/
		PM37 Year2011 Education and Training Center of Land Transportation (IND).doc	JAPTraPIS_PTDATABASE/ Laws/Institutional/
		PM71 Year2010 Tarif Angkutan Penyeberangan Lintas Antar Provinsi (IND).pdf	JAPTraPIS_PTDATABASE/ Laws/Institutional/
		PMD06 Year2006 BKSP Secretariat Establishment (IND).doc	JAPTraPIS_PTDATABASE/ Laws/Institutional/
		PMD69 Year2007 Urban Development Agreement (IND).doc	JAPTraPIS_PTDATABASE/ Laws/Institutional/
		UU25 Year1999 Fiscal Balance btw Central and Regional Govt (IND).docx	JAPTraPIS_PTDATABASE/ Laws/Institutional/
	Environment	KepMen ESDM No.2889 K-12-MEM-2010 BBM FY2010 (IND).doc	JAPTraPIS_PTDATABASE/ Laws/Environment/
		KepMen ESDM No.2932 K-12-MEM-2010 Fuel for Tranp in Jakarta (IND).doc	JAPTraPIS_PTDATABASE/ Laws/Environment/
		Perda02 Year2005 Air Pollution Control (JKT) (IND).doc	JAPTraPIS_PTDATABASE/ Laws/Environment/
		PerGub92 Year2007 Emission Test and the Maintenance of Motorized Vehicle (ENG).doc	JAPTraPIS_PTDATABASE/ Laws/Environment/
		UU23 Year1997 Environmental Management (IND).docx	JAPTraPIS_PTDATABASE/ Laws/Environment/

Others	KM13 Year2006 Pedoman Pelaksanaan Lomba tertib Lalu Lintas dan Angkutan Kota (IND).pdf	JAPTraPIS_PTDatabese/ Laws/Others/
	Perda01 Year2011 APBD2011 (JKT) (IND).doc	JAPTraPIS_PTDatabese/ Laws/Others/
	Perda15 Year2010 Street Lighting (JKT) (IND).doc	JAPTraPIS_PTDatabese/ Laws/Others/
	PerGub110 Year2010 Parking Management Unit (IND).doc	JAPTraPIS_PTDatabese/ Laws/Others/
	PerGub111 Year2010 General Parking Location (IND).doc	JAPTraPIS_PTDatabese/ Laws/Others/
	PerGub123 Year2010 Transportation Operation and Maintenance (IND).doc	JAPTraPIS_PTDatabese/ Laws/Others/
	PerGub141 Year2007 Gas Fuel for Public Transport (IND).doc	JAPTraPIS_PTDatabese/ Laws/Others/
	PP02 Year2006 Loan and Grant (IND).doc	JAPTraPIS_PTDatabese/ Laws/Others/
	PP06 Year2009 Tariff on Non-tax State Revenue (IND).pdf	JAPTraPIS_PTDatabese/ Laws/Others/
	PP10 Year 2011 Procurement Procedure for Foreign Loan (Elucidation) (IND).pdf	JAPTraPIS_PTDatabese/ Laws/Others/
	PP100 Year200 Appointment of Civil Servant Employee (IND).pdf	JAPTraPIS_PTDatabese/ Laws/Others/
	PP101 Year2000 Education and Training for Civil Servant (IND).pdf	JAPTraPIS_PTDatabese/ Laws/Others/
	PP104 Year2000 Balance Finance (ENG).pdf	JAPTraPIS_PTDatabese/ Laws/Others/
	PP106 Year2000 Financial Management and Accountability in Implementation (ENG).pdf	JAPTraPIS_PTDatabese/ Laws/Others/
	PP107 Year2000 Regional Loan (IND).pdf	JAPTraPIS_PTDatabese/ Laws/Others/
	PP11 Year2001 Regional Finance (ENG).pdf	JAPTraPIS_PTDatabese/ Laws/Others/
	PP25 Year2000 Provincial Government Authority (IND).docx	JAPTraPIS_PTDatabese/ Laws/Others/
	PP26 Year2008 National Spatial Planning (IND).docx	JAPTraPIS_PTDatabese/ Laws/Others/
	PP30 Year2011 Regional Loan (IND).doc	JAPTraPIS_PTDatabese/ Laws/Others/
	PP30 Year2011 Regional Loan (Elucidation) (IND).pdf	JAPTraPIS_PTDatabese/ Laws/Others/

		PP38 Year2007 CG and LG Task Demarcation (Elucidation) (IND).pdf	JAPTraPIS_PTDatabese/ Laws/Others/
		PP38 Year2007 CG and LG Task Demarcation (IND).doc	JAPTraPIS_PTDatabese/ Laws/Others/
		PP50 Year2007 Implementation Procedure for Regional Cooperation (IND).doc	JAPTraPIS_PTDatabese/ Laws/Others/
		PP52 Year2001 Implementation of Assistance Tasks (IND).pdf	JAPTraPIS_PTDatabese/ Laws/Others/
		PP66 Year2001 Regional Retribution (IND).docx	JAPTraPIS_PTDatabese/ Laws/Others/
		PP84 Year2000 Regional Apparatus Organization Guideline (ENG).pdf	JAPTraPIS_PTDatabese/ Laws/Others/
		PP84 Year2001 Balance Fund (ING).pdf	JAPTraPIS_PTDatabese/ Laws/Others/
		PP97 Year2000 Formation of Civil Employee (IND).pdf	JAPTraPIS_PTDatabese/ Laws/Others/
		PP99 Year2000 Power Enhancement of Civil Servant (IND).pdf	JAPTraPIS_PTDatabese/ Laws/Others/
		RPP105 Year2000 Regional Finance Management (ENG).pdf	JAPTraPIS_PTDatabese/ Laws/Others/
		RUU Jasa Otoritas Keuangan (IND).doc	JAPTraPIS_PTDatabese/ Laws/Others/
		UU02 Year2002 National Police (Elucidation) (IND).docx	JAPTraPIS_PTDatabese/ Laws/Others/
		UU03 Year2011 Fund Transfer (Elucidation) (IND).doc	JAPTraPIS_PTDatabese/ Laws/Others/
		UU03 Year2011 Fund Transfer (IND).doc	JAPTraPIS_PTDatabese/ Laws/Others/
		UU05 Year1999 Prohibition of Monopoly Practices and Unfair Business Competition (IND).docx	JAPTraPIS_PTDatabese/ Laws/Others/
		UU08 Year1999 Consumer Protection (IND).docx	JAPTraPIS_PTDatabese/ Laws/Others/
		UU08 Year2005 Perubahan atas UU32-2004 (IND).doc	JAPTraPIS_PTDatabese/ Laws/Others/
		UU08 Year2011 Multimodal Transportation (IND).doc	JAPTraPIS_PTDatabese/ Laws/Others/
		UU12 Year2008 Perubahan Kedua atas UU32-2004 (IND).doc	JAPTraPIS_PTDatabese/ Laws/Others/
		UU12 Year2011 Drafting Law and Regulation (IND).doc	JAPTraPIS_PTDatabese/ Laws/Others/

		UU12 Year2011 Formulation of Law and Regulation (Elucidation) (IND).pdf	JAPTraPIS_PTDATABASE/ Laws/Others/
		UU19 Year2003 Stated Owned Enterprise (IND).docx	JAPTraPIS_PTDATABASE/ Laws/Others/
		UU24 Year1992 Spatial Management (ENG).pdf	JAPTraPIS_PTDATABASE/ Laws/Others/
		UU25 Year2004 National Development Planning System (Elucidation) (IND).doc	JAPTraPIS_PTDATABASE/ Laws/Others/
		UU25 Year2004 National Development Planning System (IND).doc	JAPTraPIS_PTDATABASE/ Laws/Others/
		UU25 Year2009 Public Services (IND).pdf	JAPTraPIS_PTDATABASE/ Laws/Others/
		UU26 Year2007 Spatial Planning (IND).docx	JAPTraPIS_PTDATABASE/ Laws/Others/
		UU27 Year2009 DKI-JKT The Capital of Indonesia (IND).pdf	JAPTraPIS_PTDATABASE/ Laws/Others/
		UU28 Year2002 Building Code (IND).doc	JAPTraPIS_PTDATABASE/ Laws/Others/
		UU28 Year2009 Regional Retribution and Tax (Elucidation) (IND).doc	JAPTraPIS_PTDATABASE/ Laws/Others/
		UU28 Year2009 Regional Retribution and Tax (IND).doc	JAPTraPIS_PTDATABASE/ Laws/Others/
		UU29 Year2007 DKI-JKT The Capital of Indonesia (IND).doc	JAPTraPIS_PTDATABASE/ Laws/Others/
		UU32 Year2004 Regional Government (IND).docx	JAPTraPIS_PTDATABASE/ Laws/Others/
		UU34 Year1999 Special Capital City District of Jakarta (IND).pdf	JAPTraPIS_PTDATABASE/ Laws/Others/

Source: Study Team

3) Figures

Figure A1.1 Study Area in Indonesia

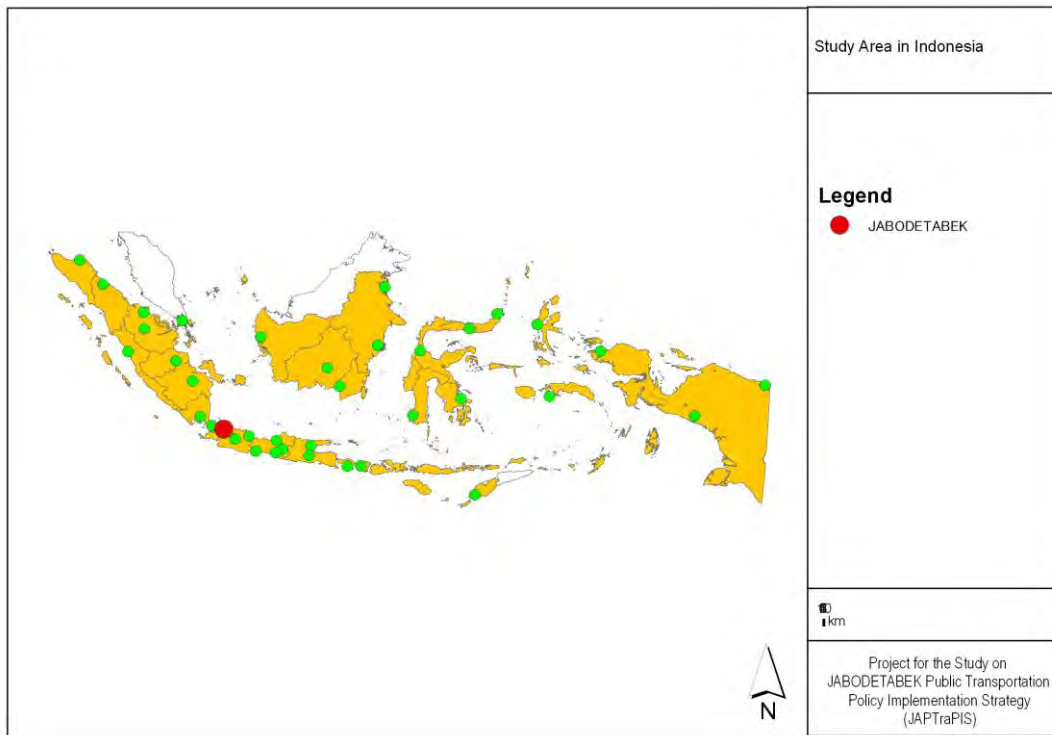


Figure A1.2 Study Area of JABODETABEK

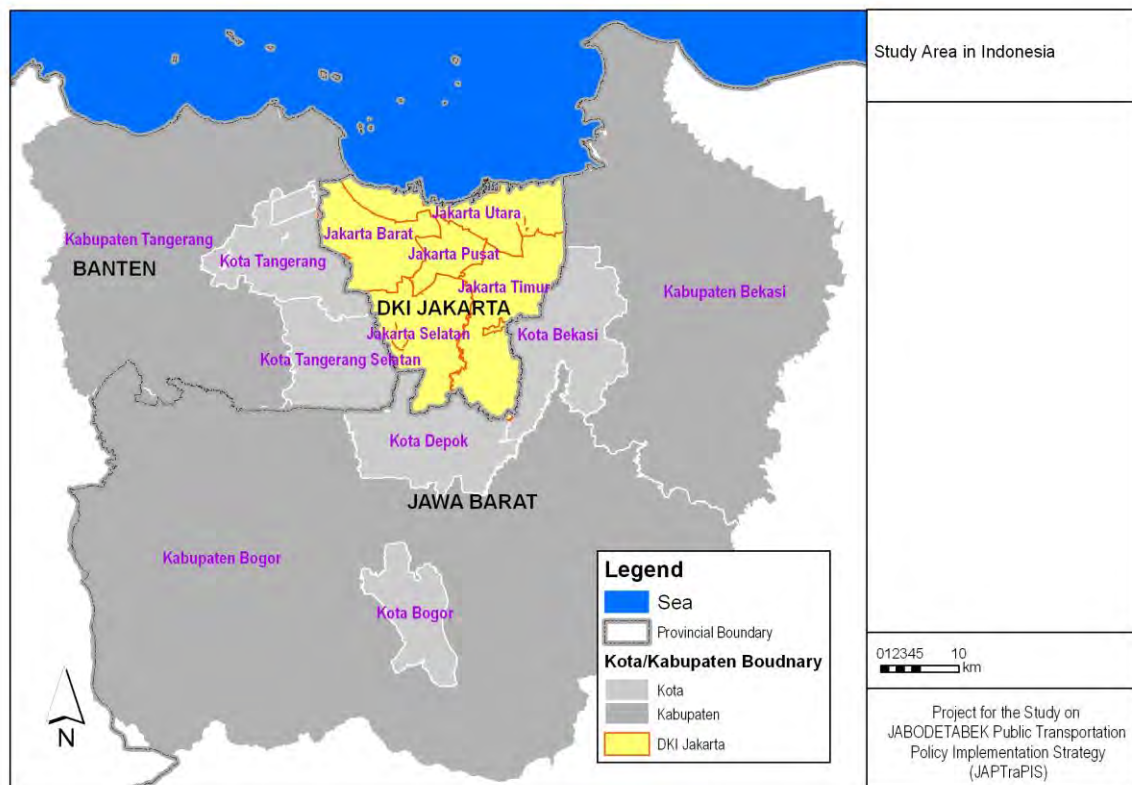


Figure A1.3 Spatial Planning in Study Area (RTRW Jabodetabekpunjur)

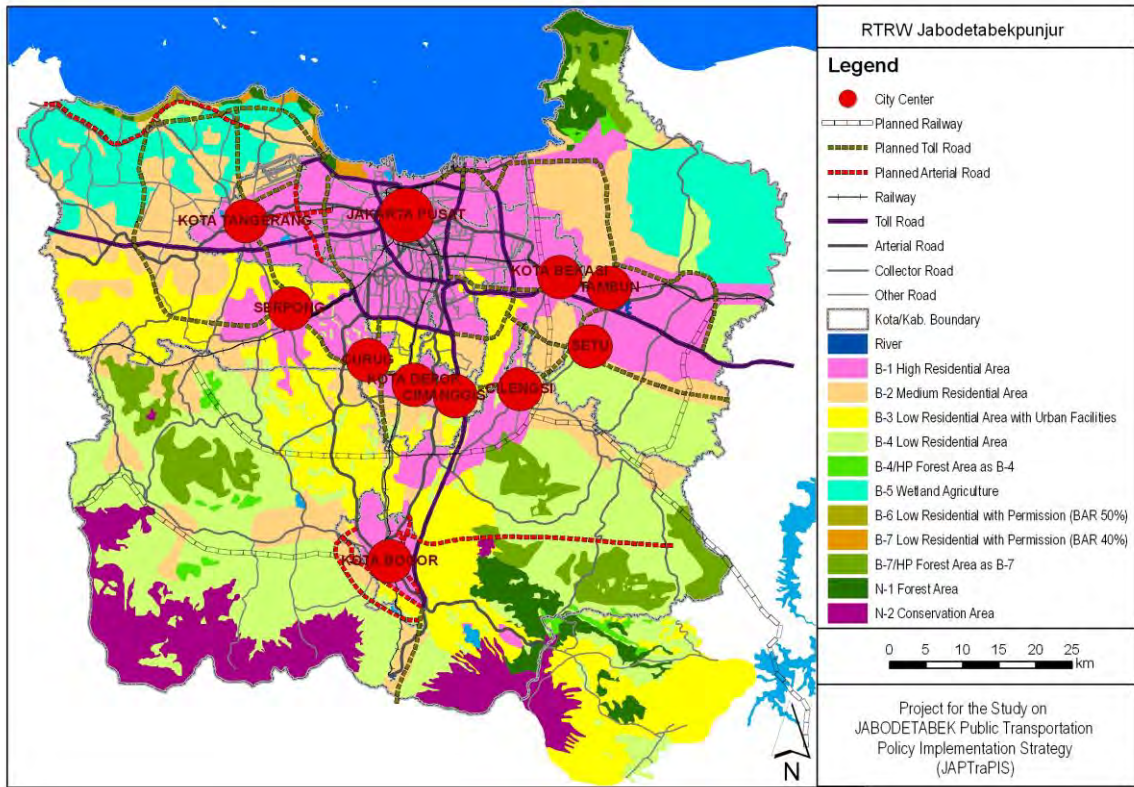


Figure A1.4 Existing Landuse

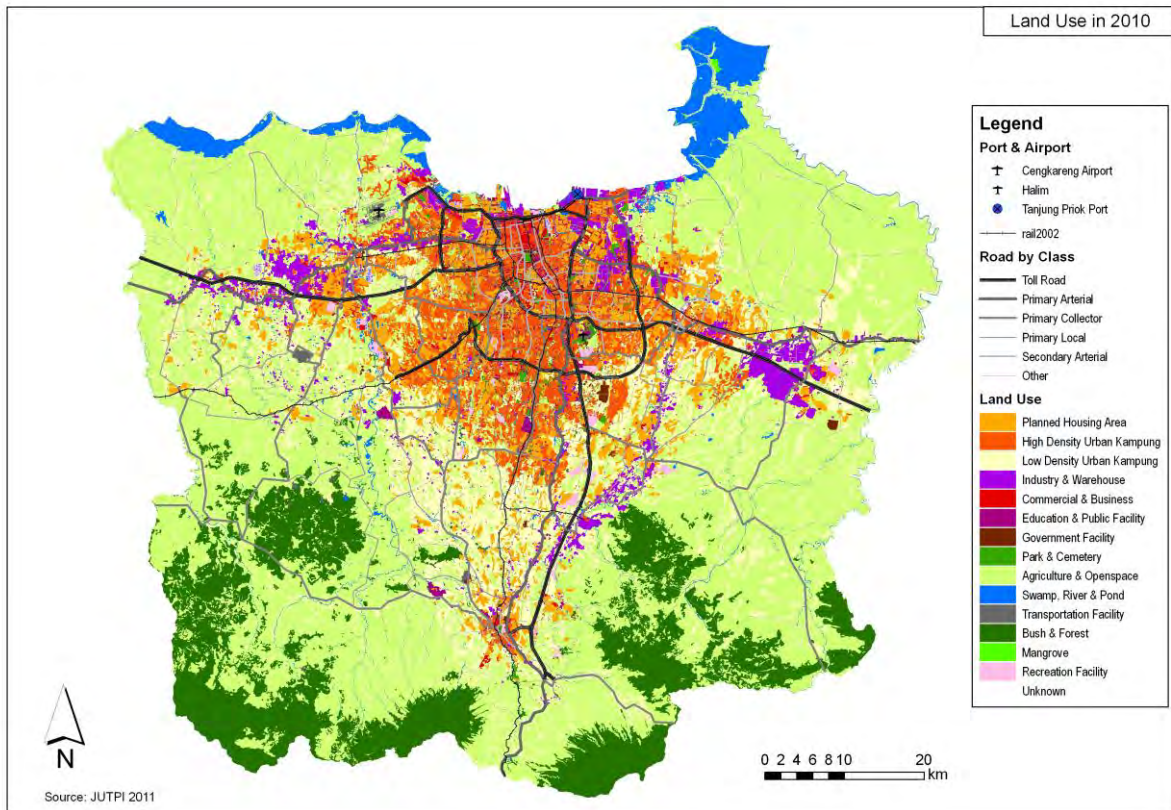


Figure A1.7 Population Density by Census Kelurahan

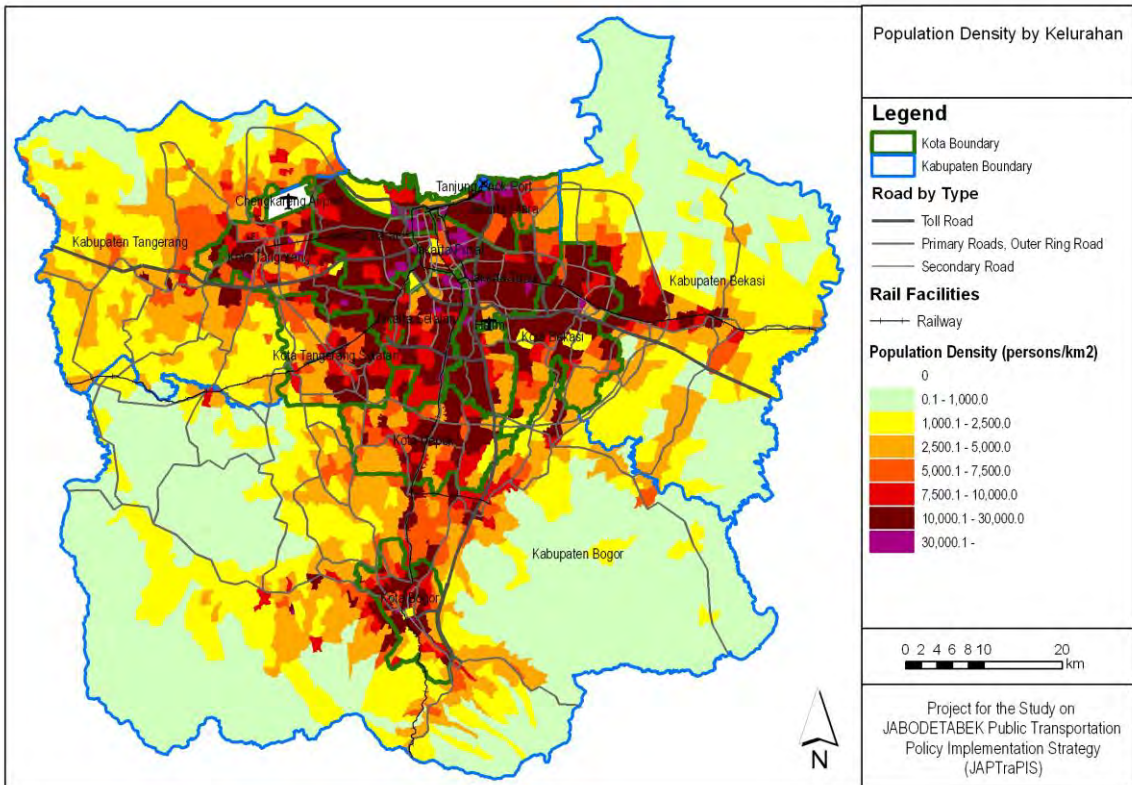


Figure A1.8 Gender Balance by Census Kelurahan

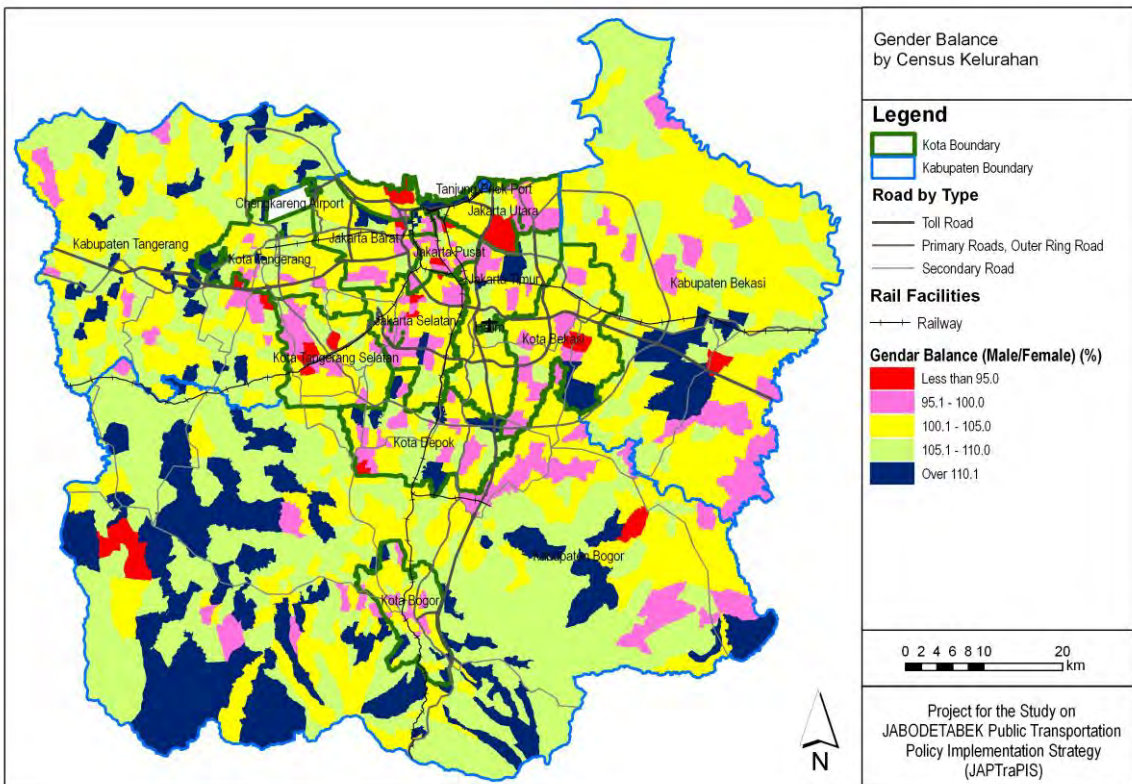


Figure A1.9 Road Network by Class

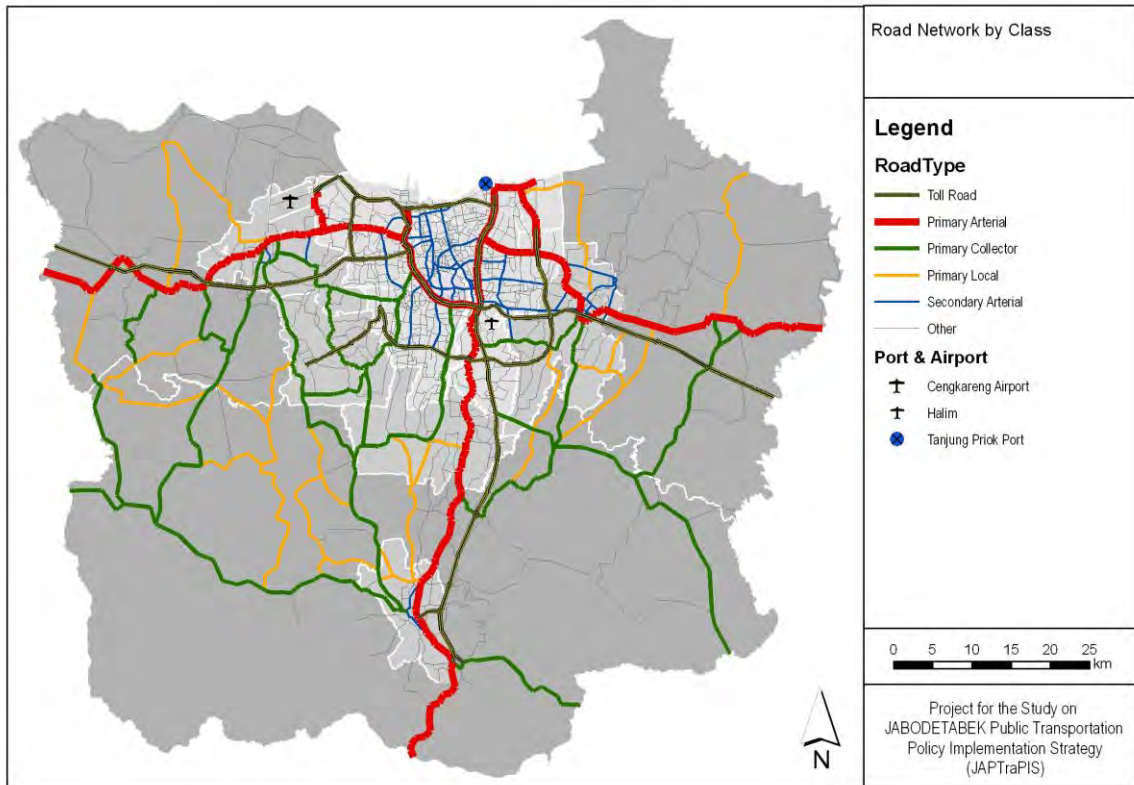


Figure A1.10 Road Network by Capacity

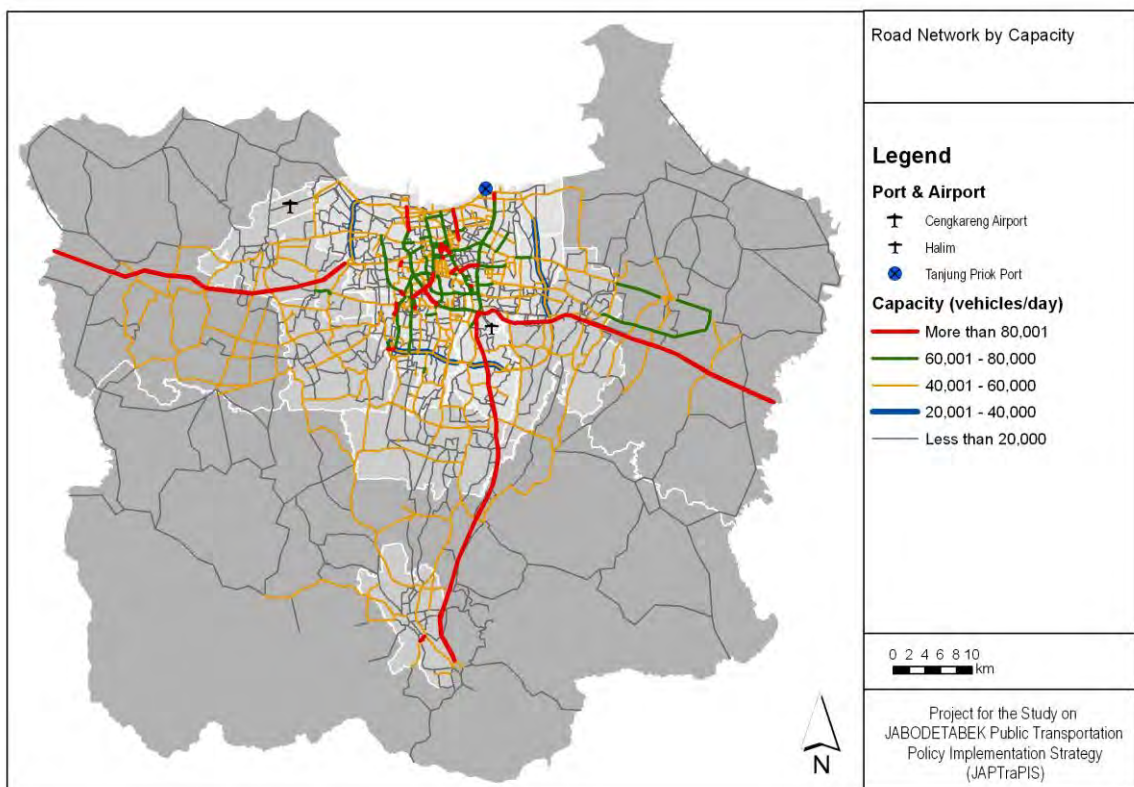


Figure A1.11 Location of Flyovers in DKI Jakarta

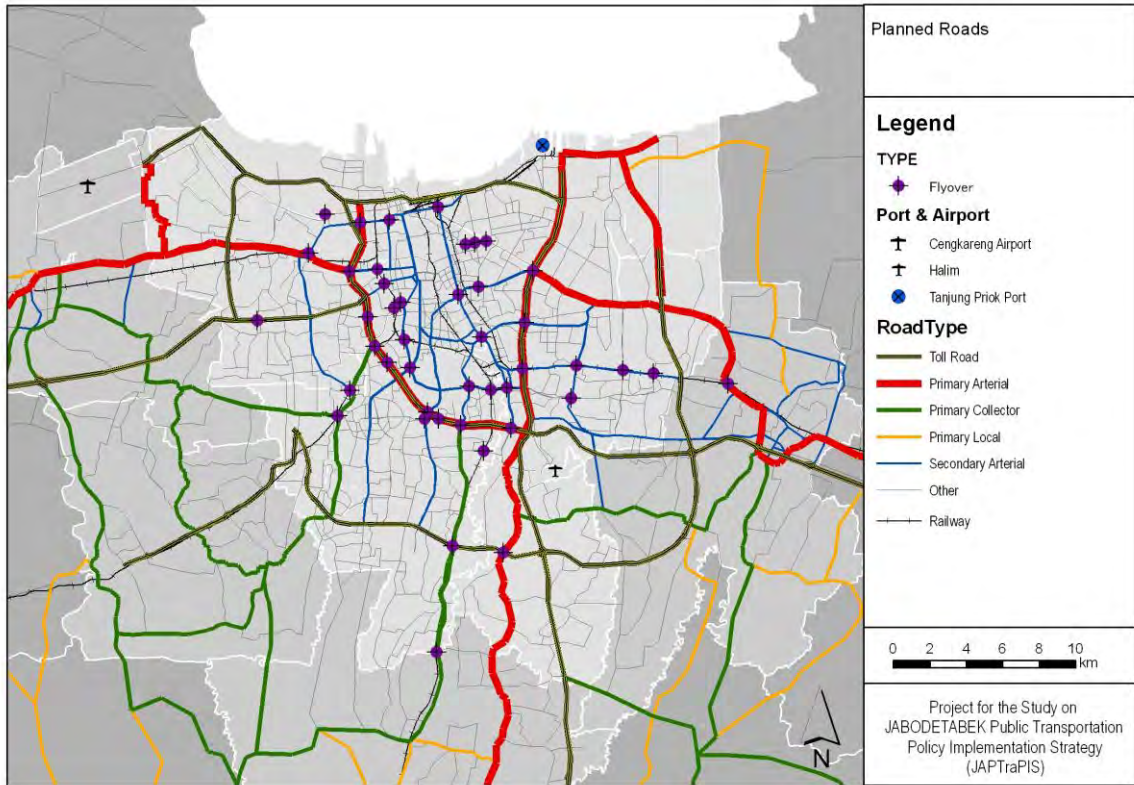


Figure A1.12 Planned Roads by JUTPI

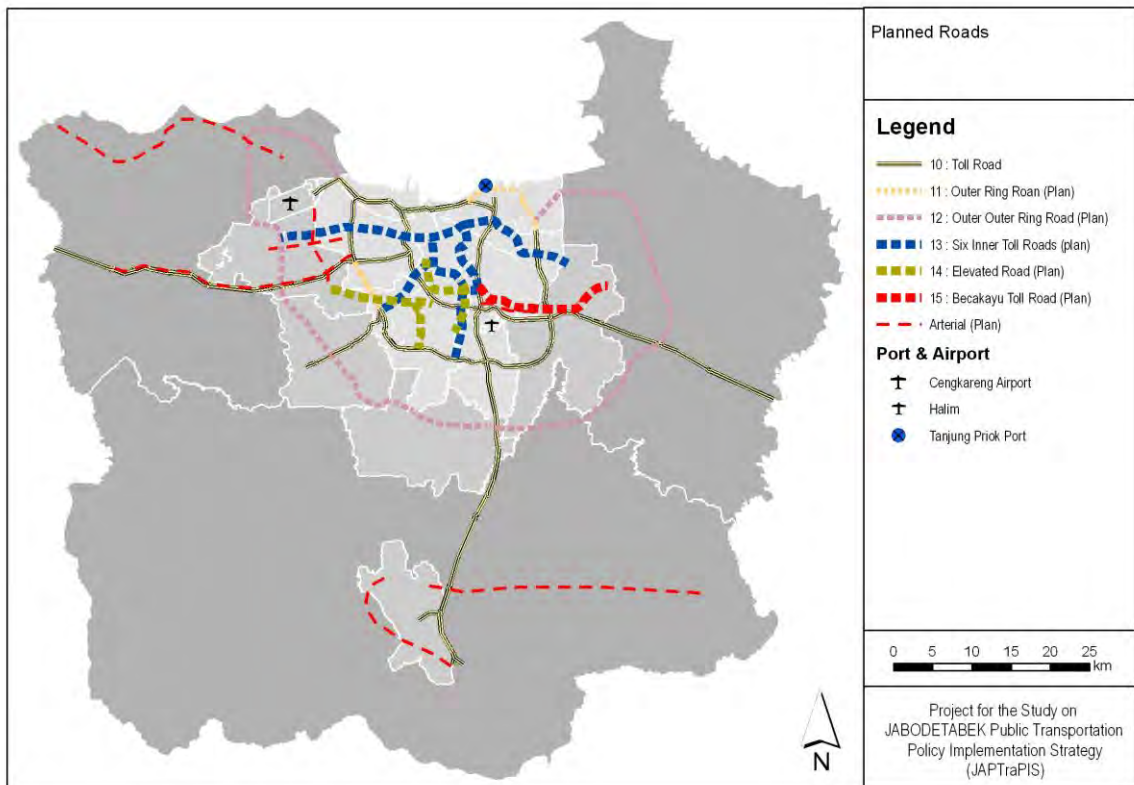


Figure A1.13 Planned Railway Projects by JUTPI

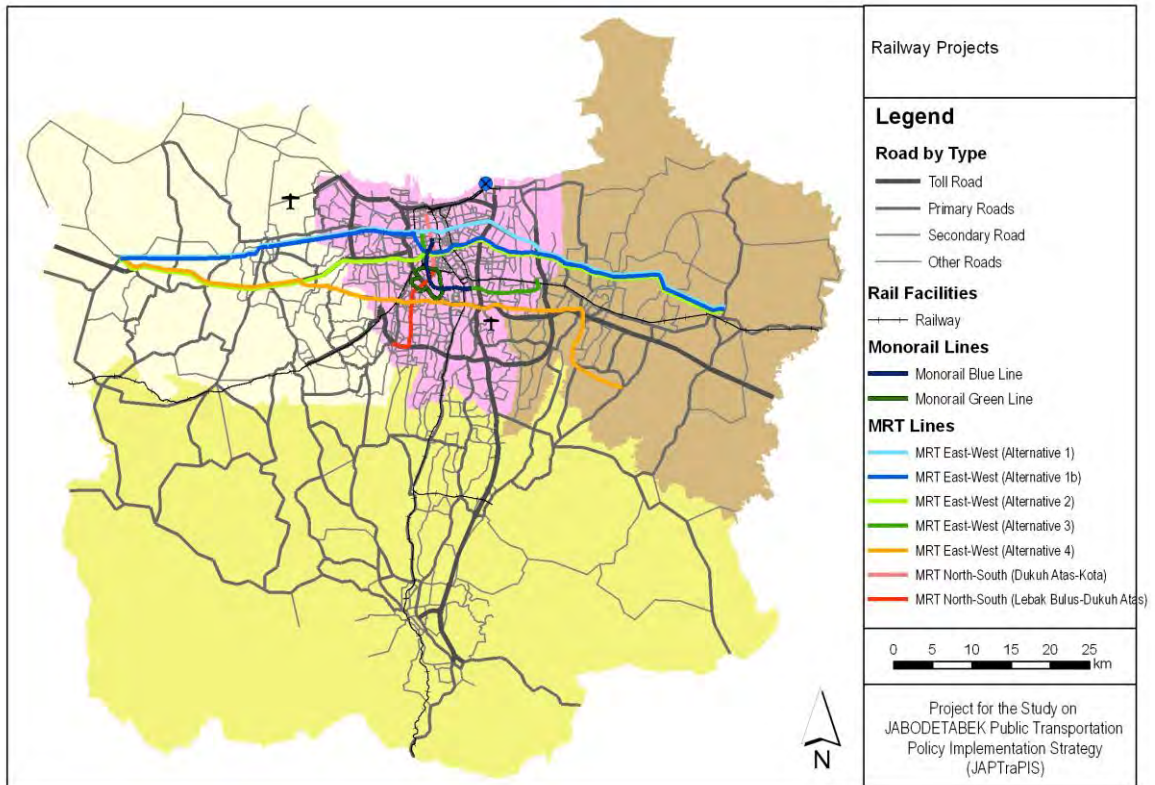


Figure A1.14 Busway Network

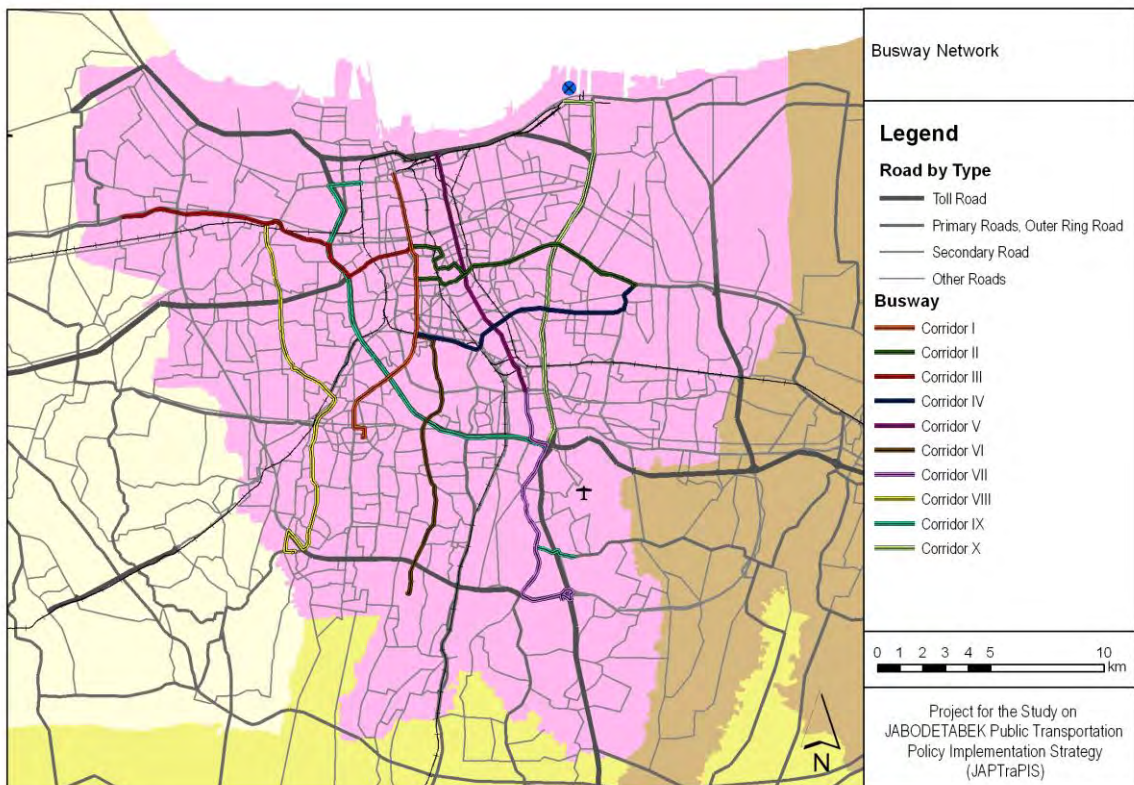


Figure A1.15 Bus Terminal by Type

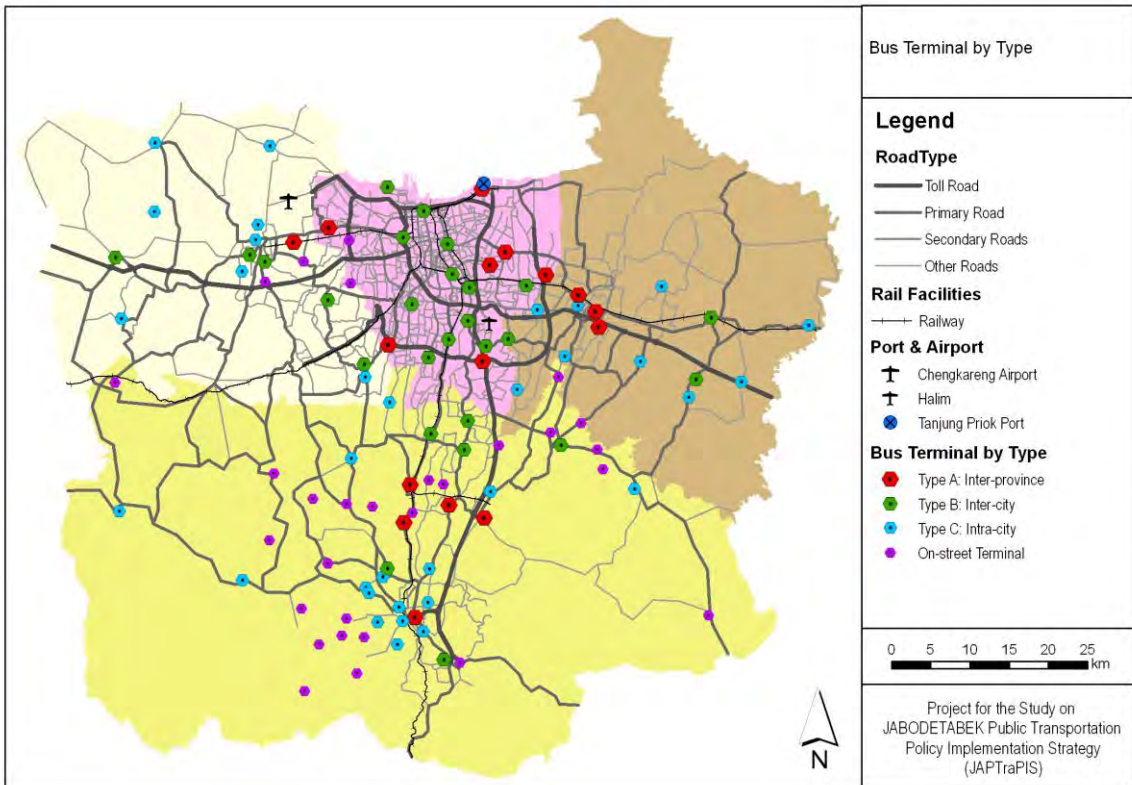


Figure A1.16 Busway Network and Bus Terminal by Type in DKI Jakarta

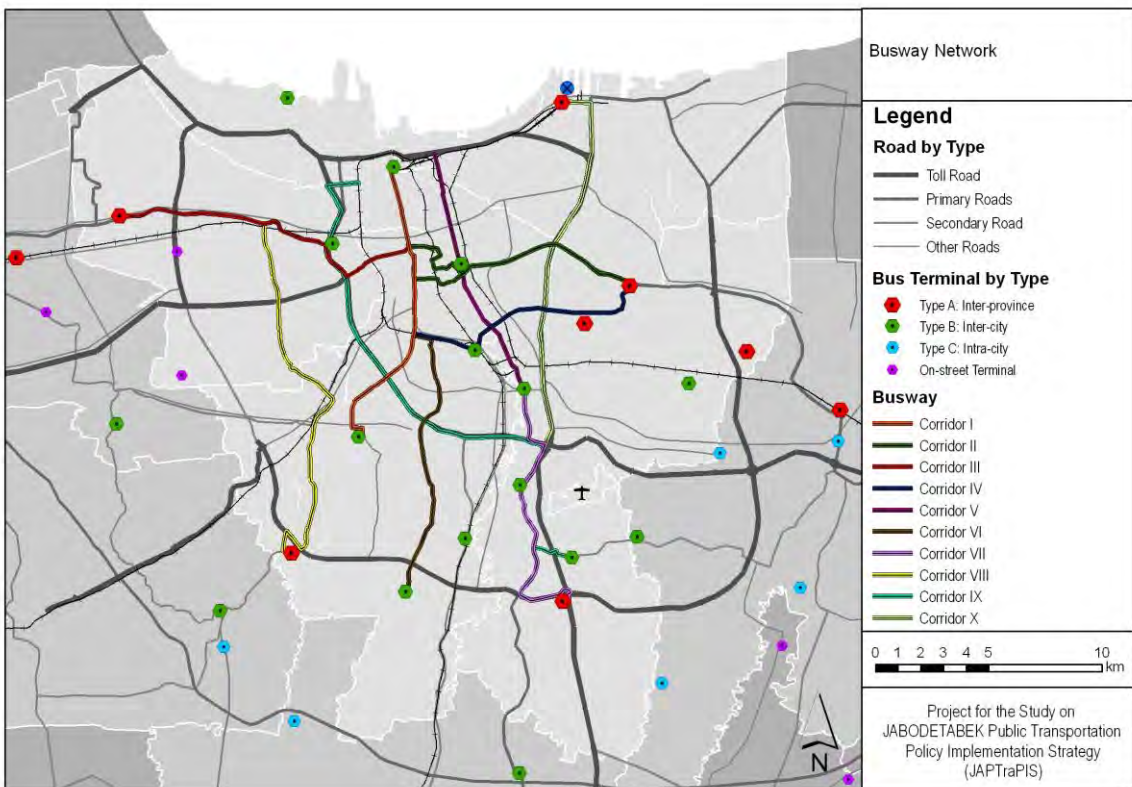


Figure A1.17 Social Facilities in DKI Jakarta in 2002

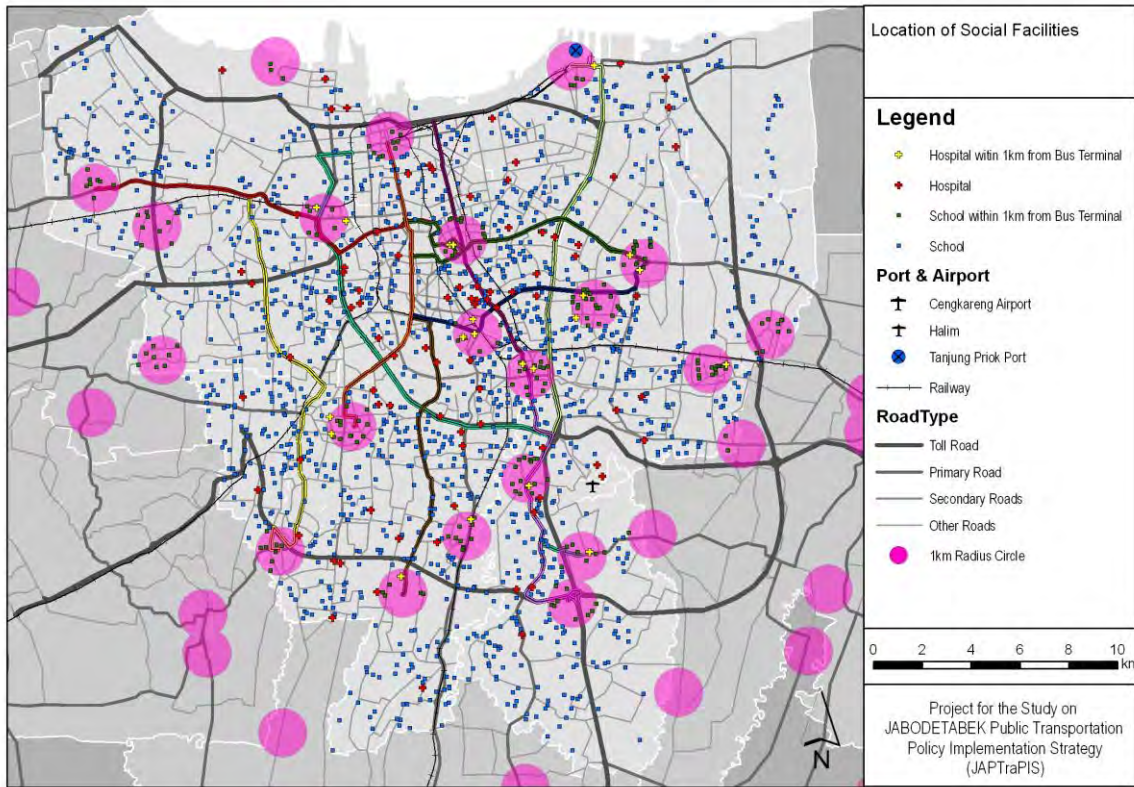
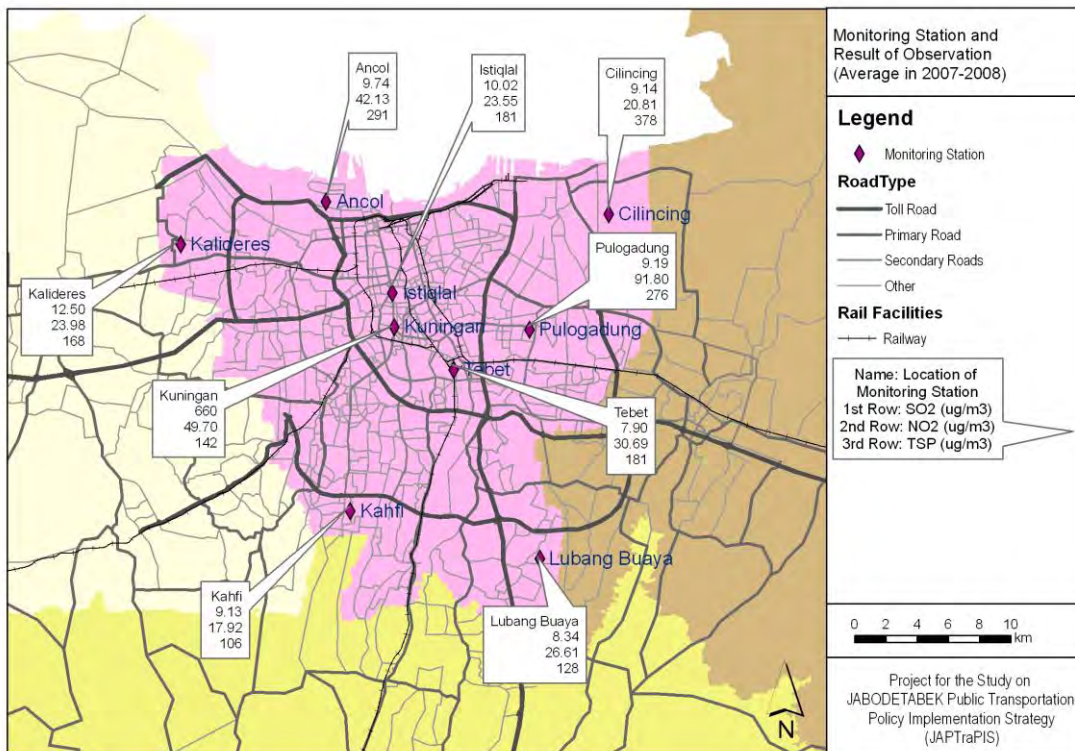


Figure A1.18 Environmental Monitoring Station and Results of Observation in DKI Jakarta in 2007-2008



APPENDIX 2 : COUNTERPART TRAINING PROGRAM IN JAPAN

The counterpart training program, “Urban Public Transportation Policy Implementation Strategy Focused on a Bus Transport” was conducted from 5 Feb to 12 Feb 2012 in Japan. The training aimed to share knowledge and experiences on the public transport development in Japan. Total 17 trainees from DGLT and local governments were participated. The trainees visited six organizations which are MLIT (Ministry of Land, Infrastructure, Transport and Tourism), Tokyo Metropolitan Bus, Tokyu Bus, Mitsubishi Heavy Industries, Transportation Bureau City of Nagoya and Nagoya Guide Way Bus. The training contents of each organization are described as follows.

MLIT; Bus transport policy in Japan, Regulations regarding bus transport by central government, Measures for increasing of bus passengers.

Tokyo Metropolitan Bus; Outline of Tokyo Metropolitan Bus, Management of public transportation by local government, Subsidy, Integrated ticket system, Bus lane, Site visit to bus terminal (West gate of Shinjuku station).

Tokyu Bus; Bus location system, How to set the bus route, Maintenance of bus, Bus fleet, Visit to maintenance garage

Mitsubishi Heavy Industries; Electronic bus, Bus rapid transit system, ITS Plan to mitigate traffic congestion in JABODETABEK

Transportation Bureau City of Nagoya; Traffic situation in Nagoya, Outline of the Key Route Bus, Riding the Key Route Bus

Nagoya Guide Way Bus; Outline of the Guide Way Bus, Riding the Guide Way Bus

The schedule of counterpart training program and the trainees list are shown in Table A2.1 and A2.2.

Table A2.1 Schedule of Counterpart Training Program

Date		Time	Schedule	Stay in
5-Feb	Sun	22:05 -	Depart from Soekarno-Hatta Airport (JL726)	Airplane
6-Feb	Mon	- 7:15	Arrive at Narita Airport	Tokyo
		13:00 - 15:00	Orientation in TIC, JICA in Tokyo	
7-Feb	Tue	9:00 -	Depart from Hotel	Tokyo
		9:45 - 11:00	MLIT (Courtesy visit, Lecture)	
		14:00 - 17:00	Tokyo Metropolitan Bus (Lecture) Integrated terminal in Tokyo (Site visit)	
8-Feb	Wed	9:00 -	Depart from Hotel	Tokyo
		10:00 - 12:00	Tokyu Bus (Lecture)	
		14:40 - 20:00	Mitsubishi Heavy Industries (Lecture)	
9-Feb	Thu	10:00 - 13:30	From Tokyo to Nagoya (Shinkansen)	Nagoya
		13:30 - 17:00	Site visit in Nagoya	
10-Feb	Fri	8:30 -	Depart from Hotel in Nagoya	Nagoya

		9:30 - 11:45	Transportation Bureau City of Nagoya (Lecture) Rapid Bus System in Nagoya (Site visit)	
		14:00 - 16:30	Nagoya Guideway Bus (Lecture • Site visit)	
11-Feb	Sat	8:15 - 12:00	From Nagoya to Tokyo (Shinakansen)	Tokyo
		13:00 - 15:00	Evaluation meeting in TIC, JICA in Tokyo	
12-Feb	Sun	11:20 -	From Narita Airport to Soekarno-Hatta Airport	-

Table A2.2 List of Trainees

Name	Organization
Ms. Elly Sinaga	Director for Urban Transportation System Development, DGLT, MoT
Mr. Udar Pristono	Head of Transportation Agency, DKI Jakarta Province
Mr. Dicky Saromi	Head of Transportation Agency, West Java Province
Mr. Muhamad Husni Hasan	Head of Transportation, Communication, and Information Agency, Banten Province
Mr. Suharto	Head of Traffic and Road Transport Agency, Kota Bogor
Mr. Supandi Budiman	Head of Transportation Agency, Kota Bekasi
Mr. Dindin Djaenudin	Head of Transportation Agency, Kota Depok
Mr. Soebiantoro	Head of Transportation Agency, Kab. Bogor
Mr. Tuftana	Secretary of Transportation Agency, Kab. Bekasi
Mr. Karlo Manik	Deputy Director, Directorate of Urban Transportation System Development, DGLT, MoT
Mr. Rasyad Firdaus	Deputy Director, Directorate of Urban Transportation System Development, DGLT, MoT
Mr. Sugianto	Head Sub Division of Information System and Reporting, Secretariat of DGLT/Planning Division, DGLT, MoT
Mr. Iman Sukandar	Head of Urban Transportation Integration Section for Regional I, Sub Directorate of Urban Transportation Integration, Directorate of Urban Transportation System Development, DGLT, MoT
Ms. Caroline Noorida Aryani	Head of Section for Urban Transport Sub Directorate, Directorate of Urban Transportation System Development, DGLT, MoT
Mr. Andi Putra Jaya	Staff of Directorate of Urban Transportation System Development, DGLT, MoT
Ms. Ratry Febriana Amin	Staff of Urban Traffic Sub Directorate, Directorate of Urban Transportation System Development, DGLT, MoT
Mr. Firdaus Fanani	Staff of Directorate of Urban Transportation System Development, DGLT, MoT

Based on this training program, “Tokyo commitment” was declared by trainees. This commitment includes establishment of transportation forum, formulating plans and implementation strategies for improving traffic situation in JABODETABEK area. The original commitment is shown on next page.

TOKYO COMMITMENT

JABODETABEK INTEGRITY CHALLENGE 2012

We all who signed this below are the member of training program in Japan, “Urban Public Transportation Policy Implementation Strategy Focused on a Bus Transport” which conducted by Government of Japan through Japan International Cooperation Agency (JICA) on 12 February 2012. We act for and on behalf of our position and institution, in order to improve the performance of urban transportation implementation in Jakarta, Bogor, Depok, Tangerang, and Bekasi (JABODETABEK).

Based on the training result, discussions and visitations to Tokyo and Nagoya City, as references and comparison in order to manage urban transportation in agglomeration area of JABODETABEK, hence we agreed following measures:

- 1) Establishing Forum Transportasi Perkotaan (FTPJ) / Urban Transportation Forum that integrated from the existing Forum Lalu Lintas dan Angkutan Jalan in each province/district/city government in JABODETABEK. This forum is expected to conduct regular meeting every two months. The establishment steps are conducted as follows:
 - First step, FTP JABODETABEK consists of Ministry of Transportation and Local Government Units on Transportation in province/district/city governments;
 - Second step, FTP JABODETABEK consists of the above members with additional from Ministry of Public Works, National Police, and other relevant Local Government Units in province/district/city governments;
 - Third step, FTP JABODETABEK will be also supported by Coordinating Ministry of Economic Affairs, National Planning and Development Agency (BAPPENAS), and selected academicians and related social and community organizations;
- 2) All members are expected to be actively involved in formulation and agreement as well as implementation of JABODETABEK Public Transportation Policy Implementation Strategy (JAPTraPIS) results as a concept of integrated planning of JABODETABEK Urban Transportation
- 3) Developing services, improving and expanding services coverage of road based mass public transport (Trans JABODETABEK which integrating Trans Jakarta, Trans Pakuan, and other road based mass transports), and railway based mass transport, in JABODETABEK area in accordance with JAPTraPIS study results
- 4) Arranging plan and implementation schedule of manajement restructurization, fleet rejuvenation and improvement for:
 - Immediate term, by implementing the management restructurization of small bus (angkot) and medium bus from individual ownerships to business units, and encouraging them to do fleets rejuvenation in accordance with the regulation
 - Short term, by encouraging the change of small bus to medium bus
- 5) Rearranging the small bus and medium bus routes to be supported as feeder for road based mass transport and railway based mass transport in JABODETABEK urban

area

- 6) Rearranging and developing center of connection point (integrated terminal) of road based mass public transport mode, rail based mass public transport, and other feeder services in urban area of JABODETABEK to improve the speed, easiness, and amenities of transfer
- 7) Formulating plans and implementation strategy of Intelligent Transport System (ITS) that can be integrated to DKI Jakarta ITS
- 8) Formulating plan and implementation strategy of electronic smart card as a payment tools (e-money) for road based mass transport and railway based mass transport in JABODETABEK urban area, based on the standard of e-money for public transport that still in the discussion between Bank of Indonesia, Ministry of Transportation, and Ministry of Communication and Information
- 9) Developing Non Motorized Transportation (NMT), such as pedestrian facilities and cycle paths in JABODETABEK urban area.

This commitment is prepared properly and should be used appropriately.

Copy of this commitment are given to Directorate General of Land Transportation, Governor of DKI Jakarta, West Java Province, and Banten Province, Mayor of Bogor City, Depok City, Tangerang City, Tangerang Selatan City, Bekasi City, and Regent of Tangerang District, Bekasi District, and Bogor District.

Tokyo, 11 February 2012

(Signed by all members)

Figure A2.1 Ministry of Land, Infrastructure, Transport and Tourism



Figure A2.2 Tokyu Bus



APPENDIX 3 : LIST OF JAPTrAPIS MASTER PLAN PROJECTS

Table A3.1 List of JAPTrAPIS Master Plan Projects

Project	Cost (‘000 US\$)	Schedule			Implementing Agencies
		2012- 2013	2013- 2014	2015- 2020	
Integrated PT Network and Services					
P1. • Bank Indonesia to Senen two way BRT • Relocate Gambir 2 shelter • Bank Indonesia • Relocate Balaikota shelter	Implement Route 1, 2a, 6, 7, 14 L=30m, W=5m L=120m, W=5m, and footpath (20mx2.5m) L=60m, W=5m	2,077	○		TJ, DKI Jakarta
P2. • Passing shelter • New shelter D. Atas 1 • D. Atas pedestrian underpath • D. Atas escalator • D. Atas 2 • Stasiun Cawan pedestrian improvement	L=60m, W=5m L=60m, W=5m L=40m, W=3.5m, H=2.5m L=60m, W=5m L=32m, W=2.5m	1,084	○		TJ, DKI Jakarta
P3. • Busway track (Jl.Matraman and Bekasi) • Matraman link new transfer station • D. Atas area traffic modification • Blok M terminal upgrade • Blok M pedestrian deck	Implement Route 3, 5, 11, 16a L=60m, W=5m L=30m, W=10m L=35m, W=180m L=400m, W=5m	5,482	○		TJ, DKI Jakarta
P4. • Kalideres shelter improvement	L=40m, W=8m Implement Route 2b, 25	175	○		TJ, DKI Jakarta
P5. • Kp. Melayu shelter modification	L=40m, W=5m (2 unit) Implement Route 4	218	○		TJ, DKI Jakarta
P6. • Corridor 1,2&3 upgrading (track) • Corridor 1,2&3 upgrading (shelter) • Corridor 1,2&3 upgrading (bridge floor)	L=34.9km 55 shelters (L=45m, W=5m each) 40 bridged (400m ² each)	17,917	○	○	TJ, DKI Jakarta
P7. • Pluit to Tj. Priok	Implement Route 12	13,907		○	TJ, DKI Jakarta
P8. • Implement Intermediate	Implement Intermediate Route 40, 44, 45, 46, 48	2,981		○	TJ, DKI Jakarta, Tangerang District

P9. · Harapan Indah extension	Implement Route 16	12,799		○		TJ, DKI Jakarta, Bekasi City
P10. · Corridor 11 extension to Bekasi terminal · Implement Intermediate	Implement Route 26 Implement Intermediate Route 47, 52, 54	15,904		○		TJ, DKI Jakarta, Bekasi City
P11. · Extension Tangerang	Implement Route 13a+13b, 2 (after 2015)	13,045		○	○	TJ, DKI Jakarta, Tangerang City
P12. · TentaraPelajar link	Implement Route 15	4,731		○		TJ, DKI Jakarta
P13. · Casablanca, Tn.Abang to Kp.Melayu	Implement Route 27	7,108			○	TJ, DKI Jakarta
P14. · Kyai Maja link to Kuningan		2,739			○	TJ, DKI Jakarta
P15. · Ciputat extension · Implement Intermediate	Implement Route 23 Implement Intermediate Route 41, 42	8,113			○	TJ, DKI Jakarta, Tangerang Selatan City, Depok City
P16. · BRT Tol. Serpong	Implement Route 24	8,294			○	TJ, DKI Jakarta, Tangerang Selatan City
P17. · Ciledug link and Cililitan link	Implement Route 8, 22	16,218			○	TJ, DKI Jakarta, Tangerang City
P18. · Develop Cawang UKI as main Transfer shelter	L=140m, W=5m	3,440			○	TJ, DKI Jakarta
P19. · Kalimalang Corridor · Implement Intermediate	Implement Route 9 Implement Intermediate Route 49	10,022			○	TJ, DKI Jakarta, Bekasi City
P20. · Jl. Tol Letnan Haryono to Manggarai		2,962			○	TJ, DKI Jakarta
P21. · Cibubur to Cawang via Toll Road	Implement Route 19	13,933			○	TJ, DKI Jakarta, Bogor District
P22. · Depok Baru to Toll link · Implement Intermediate	Implement Route 10 Implement Intermediate Route 43, 50, 51	8,851			○	TJ, DKI Jakarta, Depok City, Bekasi City, Bogor District

P23. · Jl. Raden Ajeng Kartini	Implement Route 21	8,861			○	TJ, DKI Jakarta
P24. · Sukamajo to Gedung	Implement Route 18	15,876			○	TJ, DKI Jakarta, Depok City
P25. · Depok Baru to Toll. MH Haryonoto	Implement Route 10	17,189			○	TJ, DKI Jakarta, Depok City
P26. · Tangerang to BSD	Implement Route 13	23,260			○	TJ, Tangerang City, Tangerang Selatan City
P27. · BSD to Harmoni via Kbn.Jeruk Toll Link	Implement Route 30	6,849			○	TJ, DKI Jakarta, Tangerang City, Tangerang Selatan City
P28. · BSD to Bank Indonesia via Tn.Abang new Toll link	Implement Route 29	4,273			○	TJ, DKI Jakarta, Tangerang Selatan City
P29. · Bekasi station to Setu · Implement Intermediate	Implement Route 17 Implement Intermediate Route 53	14,067			○	TJ, Bekasi City, Bogor District
P30. · Pulo Gadung to Bumi Anggrek	Implement Route 20	13,907			○	TJ, Bekasi City Bekasi District
P31. · Bogor Extension	Implement Route 31	3,077			○	TJ, Bogor City, Bogor District
Articulated Bus for Full BRT Routes	574 Buses	192,300	○	○		TJ
Articulated Bus for Full BRT Routes	1,107 Buses	370,800			○	TJ
Single Bus for intermediate Routes	277 Buses	72,000			○	TJ

Project		Cost ('000 US\$)	Schedule			Implementing Agencies
			2012- 2013	2013- 2014	2015- 2020	
Infrastructure Development						
BRT Location System and Control Center						
· Equipment in Bus	1,100 Sets					
· LED indicator inside Bus	1,100 Sets					
· Radio System	1,100 Sets					
· Information Monitor at Bus Station	260 Sets	7,289	○	○		TJ
· Monitor at Control Center	20 Sets					
· PC sets	30 Sets					
· System Development and Server						
BRT Location System and Control Center						
· Equipment in Bus	1,400 Sets					
· LED indicator inside Bus	1,400 Sets	6,500			○	TJ
· Radio System	1,400 Sets					
· Information Monitor at Bus Station	180 Sets					
Bus Ticketing System						
· Automatic Gate at Shelter (2 gates/ shelter)	520 sets					
· Sales Terminal at Shelter	260 sets					
· System Development and Server						
· Handy Terminal in Intermediate Bus	160 sets	16,280	○	○		TJ
· Software Development for Intermediate Bus						
· Wireless LAN Equipment and Server for Intermediate Bus						
Bus Ticketing System						
· Automatic Gate at Shelter (2 gates/ shelter)	360 sets					
· Sales Terminal at Shelter	180 sets	4,200			○	TJ
· Handy Terminal in Intermediate Bus	120 sets					
Park & Ride Facility	Space:					
· Pinang Ranti	100	n.a.	○			TJ, DKI Jakarta, Bekasi City
· Pulo Gebang	100					
· Harapan Indah	300~					

Park & Ride Facility • Pluit • Tj.Priok • Ancol • Bekasi • Mergahayu • Cikokor	Space: 200 200 200 300~ 300~ 200	n.a.		○		TJ, DKI Jakarta, Bekasi City, Tangerang City
Park & Ride Facility • Telukpucung • Setu • Setos • Ciledug • BSD • Bintaro • Ciputat • Cibubur • Jatijajar • Depok Baru	Space: 300~ 300~ 300~ 300~ 300~ 300~ 200 300~ 200 300~	n.a.			○	TJ, Bekasi District, Bekasi City, Tangerang City, Tangerang Selatang City, Bogor District, Depok City,
Integrated/ Multimodal Terminal • Kota • Dukuh Atas 1&2 • Blok M • Lebak Bulus • Pulo Gebang • Pulo Gadung • Grogol • Kalideres		n.a.	○	○		TJ, DKI Jakarta
Integrated/ Multimodal Terminal • Tj. Priok • Gambir • Senen • Manggarai • Pasar Minggu • Kp. Melayu • Station Bekasi • Terminal Bekasi • Cawan • Poris Plawad • Rw. Buntu • Depok Baru		n.a.			○	TJ, DKI Jakarta, Bekasi City, Tangerang City, Tangerang Selatang City, Depok City
Cycle and Walking Facilities		n.a.	○	○	○	All Local Governments

Project	Cost ('000 US\$)	Schedule			Implementing Agencies
		2012- 2013	2013- 2014	2015- 2020	
Establishment of Trans Jabodetabek					
Establishment of JTA	n.a.	○			Central Government
Institutional Design	n.a.	○			JTA
Establishment and Operation	n.a.		○		JTA

Project	Cost ('000 US\$)	Schedule			Implementing Agencies
		2012- 2013	2013- 2014	2015- 2020	
Reforming Bus Management System					
Minimum Service Standards	n.a.		○	○	DGLT, JTA, All Local Governments
Rejuvenation of Bus Fleets	n.a.	○	○	○	DGLT, JTA, All Local Governments
Restructuring General Bus Licensing	n.a.		○	○	DGLT, JTA, All Local Governments
Institutional and Capacity Building	TA		○		DGLT, JTA, All Local Governments

Note: JTA: JABODETABEK Transportation Agency, TJ: TransJabodetabek (Regional BRT Agency under JTA), TA: Technical Assistance (funded by Official Development Assistance)