

Attachment - 1

GOVERNMENT OF SINDH  
HEALTH DEPARTMENT

VACANCY POSTION OF ANAESTHETIST, ENT SPECIALIST AND OPHTHALMOLOGIST OVER ALL SINDH

	Speciality with BPS	Sanctioned			Working			Vacant		
		18	19	20	18	19	20	18	19	20
1	ANAESTHETIST	103	24	10	91	24	8	12	0	2
2	ENT SURGEON	56	12	6	52	10	5	4	2	1
3	OPHTHALMOLOGIST	117	27	9	101	22	7	16	5	2
	TOTAL	276	63	25	244	56	20	32	7	5

*[Signature]*  
24/9/11

*[Signature]*  
SOW  
24/9/11

T.J

Department		New No.	Name of Item	Q'ty	*
Pediatric Medicine	1	PM-1	Hospital Beds with mattress	101	
Pediatric Medicine	2	PM-2	Bed Side Lockers	101	
Pediatric Medicine	3	PM-29	IV Stand	35	
Pediatric Medicine	4	PM-30	Oxygen flow meter, Humidifier and Regulator	14	
Pediatric Medicine	5	PM-4	Electric Suction Machine (S)	4	
Pediatric Medicine	6	PM-6	Laryngoscope (Children Blades)	2	
Pediatric Medicine	7	PM-10	BP Apparatus Mercury with Stands (peads)	6	
Pediatric Medicine	8	PM-12	Ultrasonic Nebulizer (Hospital Use)	4	
Pediatric Medicine	9	PM-13	Infusion Pumps	8	
Pediatric Medicine	10	PM-14	Pulse Oxymeter	6	
Pediatric Medicine	11	PM-15	Saturation Monitor (Patient monitor)	8	
Pediatric Medicine	12	PM-31	Instrument Trolley	2	
Pediatric Medicine	13	PM-32	Desk for consultation	4	
Pediatric Medicine	14	PM-33	Chair for Dr. and Patients	6	
Pediatric Medicine	15	PM-20	Refrigerator Pharmaceutical	2	
Pediatric Medicine	16	PM-35	Examination Couch	5	
Pediatric Medicine	17	PM-36	Dressing Set	2	
Pediatric Medicine	18	PM-37	Wheel Chairs	4	
Pediatric Medicine	19	PM-38	Room Bed	4	
Pediatric Medicine	20	PM-39	Medicine Cabinet with Key (Transparent Glass)	2	
Pediatric Medicine	21	PM-40	Instrument Cabinet (7ft x 3ft x 2ft with two portion)	2	
Pediatric Medicine	22	PM-42	Landry Cart	2	
Pediatric Medicine	23	PM-44	Hospital Sluice Sink	2	
Pediatric Medicine	24	PM-45	Garbage Box	1	
Pediatric Medicine	25	PM-21	X-Ray Viewing Box	4	
Pediatric Medicine (PICU)	26	PICU-1	Defibrillator	1	
Pediatric Medicine (PICU)	27	PICU-2	ICU Beds for Recovery Room	8	
Pediatric Medicine (PICU)	28	PICU-3	Bed Side Lockers	8	
Pediatric Medicine (PICU)	29	PICU-4	IV stand	4	
Pediatric Medicine (PICU)	30	PICU-5	ICU Monitors (Patient Monitors)	4	
Pediatric Medicine (PICU)	31	PICU-6	Pulse Oxymeter	2	
Pediatric Medicine (PICU)	32	PICU-7	Diagnostic Set	1	
Pediatric Medicine (PICU)	33	PICU-9	BP Apparatus Mercury with Stands (peads)	4	
Pediatric Medicine (PICU)	34	PICU-10	Hospital Sluice Sink	1	
Pediatric Medicine (PICU)	35	PICU-13	Medicine Cabinet with Key (Transparent Glass)	1	
Pediatric Medicine (PICU)	36	PICU-12	Room Bed	1	
OPD (Pediatric Surgery)	37	OPDPS-1	Auto Clave (Boiling sterilizer)	1	
OPD (Pediatric Surgery)	38	OPDPS-2	Electric Suction Machine (S)	1	
OPD (Pediatric Surgery)	39	OPDS-10	Chair for Dr. and Patients	2	
OPD (Pediatric Surgery)	40	OPDS-11	Desk for consultation	1	
OPD (Pediatric Surgery)	41	OPDPS-4	Waste Pot	1	
OPD (Pediatric Surgery)	42	OPDPS-5	Examination Lamp	1	
OPD (Pediatric Surgery)	43	OPDPS-6	Refrigerator Pharmaceutical	1	
OPD (Pediatric Surgery)	44	OPDPS-7	Ambu Bag (peads) (1L & 2L)	1	
OPD (Pediatric Surgery)	45	OPDPS-9	X-Ray Viewing Box	1	
Pediatric Surgery	46	PS-1	Hospital Beds with mattress	16	change
Pediatric Surgery	47	PS-2	ICU Beds for Recovery Room	4	change
Pediatric Surgery	48	PS-3	Bed Side Lockers	20	
Pediatric Surgery	49	PS-4	IV stand	8	
Pediatric Surgery	50	PS-5	Oxygen flow meter, Humidifier and Rregulator	4	
Pediatric Surgery	51	PS-6	ICU Monitors (Patient Monitors)	2	
Pediatric Surgery	52	PS-7	Syringe Pump	2	
Pediatric Surgery	53	PS-8	Infusion Pumps	2	
Pediatric Surgery	54	PS-10	Instrument Trolley	2	
Pediatric Surgery	55	PS-11	Instrument Cabinet (7ft x 3ft x 2ft with two portion)	2	
Pediatric Surgery	56	PS-12	Medicine Cabinet with Key (Transparent Glass)	2	
Pediatric Surgery	57	PS-13	Waste Pot	2	
Pediatric Surgery	58	PS-14	Room Bed	1	
Pediatric Surgery	59	PS-15	Locker	2	
Pediatric Surgery	60	PS-16	Desk for consultation	2	
Pediatric Surgery	61	PS-19	Hospital Sluice Sink	1	

Department		New No.	Name of Item	Q'ty	*
Pediatric Surgery	62	PS-17	Chair for Dr. and Patients	3	
Pediatric Surgery	63	PS-18	Landry Cart	2	
Emergency	64	E-1	Electric Suction Machine (S)	2	
Emergency	65	E-2	BP Apparatus Mercury with Stands (peads)	3	
Emergency	66	E-3	Diagnostic Set	2	
Emergency	67	E-4	Ophthalmoscope	2	
Emergency	68	E-5	Laryngoscope (Children Blades)	2	
Emergency	69	E-6	Emergency Trolley	2	
Emergency	70	E-9	Dressing Set	2	
Emergency	71	E-11	Emergency Beds	8	
Emergency	72	E-12	Ultrasonic Nebulizer (Hospital Use)	2	
Emergency	73	E-13	Defibrillator	1	
Emergency	74	E-14	First Aid Kit	2	
Emergency	75	E-16	Pulse Oxymeter	3	
Emergency	76	E-17	Infusion Pumps	2	
Emergency	77	E-18	IV stand	5	
Emergency	78	E-19	Oxygen flow meter, Humidifier and Regulator	10	
Emergency	79	E-20	Instrument Cabinet (7ft x 3ft x 2ft with two portion)	1	
Emergency	80	E-21	Medicine Cabinet with Key (Transparent Glass)	1	
Emergency	81	E-24	Glucometer	1	
Emergency	82	E-25	Examination Couch	3	
Emergency	83	E-28	Waiting Chair (for 4 persons)	4	
Emergency	84	E-35	Garbage Box	1	
Emergency	85	E-29	Desk for consultation	1	
Emergency	86	E-30	Chair for Dr. and Patients	3	
Emergency	87	E-31	Hospital Sluice Sink	1	
Emergency	88	E-32	Room Bed	1	
Emergency	89	E-36	Patient Trolley	2	
Emergency	90	E-34	Waste Pot	4	
OPD (Pediatrics)	91	OPDN-1	Baby Cots	1	
OPD (Pediatrics)	92	OPDN-2	Neonatal Height & Weight Scale	1	
OPD (Pediatrics)	93	OPDN-3	Laryngoscope (Children Blades)	1	
OPD (Pediatrics)	94	OPDN-6	BP Set (Neonatal)	1	
OPD (Pediatrics)	95	OPDP-10	Ambu Bag (peads) (1L & 2L)	1	
OPD (Pediatrics)	96	OPDP-2	Desk for consultation	1	
OPD (Pediatrics)	97	OPDP-3	Chair for Dr. and Patients	3	
OPD (Pediatrics)	98	OPDP-4	Waste Pot	1	
OPD (Pediatrics)	99	D-3	Auto Clave (Boiling Sterilizer)	1	
OPD (Pediatrics)	100	OPDP-5	Examination Lamp	1	
OPD (Pediatrics)	101	OPDP-6	Refrigerator for ward	1	
OPD (Pediatrics)	102	OPDP-7	Glucometer	1	
OPD (Pediatrics)	103	OPDP-8	Laryngoscope (Children Blades)	1	
OPD (Pediatrics)	104	OPDP-9	BP Apparatus Mercury with Stands (peads)	1	
OPD (Pediatrics)	105	OPDP-6	Examination Couch	1	
OPD (Pediatrics)	106	OPDP-7	X-ray vewing box	1	
OPD (Special)	107	OPDS-12	Electric Suction Machine (S)	1	
OPD (Special)	108	OPDS-2	Waste Pot	1	
OPD (Special)	109	OPDS-3	Desk for consultation	1	
OPD (Special)	110	OPDS-4	Chair for Dr. and Patients	3	
OPD (Special)	111	OPDS-5	Hospital Sluice Sink	1	
OPD (Special)	112	OPDS-6	Examination Lamp	1	
OPD (Special)	113	OPDS-7	Ambu Bag (peads) (1L & 2L)	1	
OPD (Special)	114	OPDS-9	X-Ray Viewing Box	1	
OPD (Special)	115	OPDS-10	Refrigerator Pharmaceutical	1	
OPD (Special)	116	OPDS-11	Auto Clave (boiling sterilizer)	1	
OPD (Special)	117	OPDS-17	Pulse Oxymeter	1	
OPD (Special)	118	OPDS-13	Glucometer	1	
OPD (Special)	119	OPDS-14	Laryngoscope (Children Blades)	1	
OPD (Special)	120	OPDS-15	BP Apparatus Mercury with Stands (peads)	1	
OPD(ENT, Eye)	121	OPD-4	BP Apparatus Mercury with Stands (peads)	1	*
OPD(ENT, Eye)	122	OPD-5	Diagnostic Set	1	*
OPD(ENT, Eye)	123	OPD-23	Desk for consultation	2	*

Department		New No.	Name of Item	Q'ty	*
OPD(ENT, Eye)	124	OPD-24	Chair for Dr. and Patients	4	*
OPD(ENT, Eye)	125	OPD-16	Ophthalmoscope	1	*
OPD(ENT, Eye)	126	OPD-17	Slit Lamp	1	*
OPD(ENT, Eye)	127	OPD-18	Refraction Set	1	*
OPD(ENT, Eye)	128	OPD-19	Retinoscope	1	*
OPD(ENT, Eye)	129	OPD-20	Indirect Laryngoscope	1	*
OPD(ENT, Eye)	130	OPD-21	ENT Unit	1	*
OPD(ENT, Eye)	131	OPD-22	Minor Instrument for ENT examination	1	*
OPD(ENT, Eye)	132	OPD-27	Waste Pot	2	*
Physiotherapy	133	P-2	Ultrasound Therapy Unit	1	
Physiotherapy	134	P-5	Cycle	1	
Physiotherapy	135	P-6	Weight Training	1	
Physiotherapy	136	P-7	Stoll Bars (parallel bars)	1	
Physiotherapy	137	P-8	Walking Support Bards with walker (walking support bar)	1	
Physiotherapy	138	P-9	Rehabilitation Chairs of different sizes	1	
Physiotherapy	139	P-10	Jumping Jacks (Trampoline)	1	
Physiotherapy	140	P-13	Occupational Therapy Set	1	
Neonatal care unit	141	N-1	Baby Cots	10	
Neonatal care unit	142	N-5	ICU Monitors (Patient Monitors)	4	
Neonatal care unit	143	N-6	Electric Suction Machine (S)	1	
Neonatal care unit	144	N-7	Phototherapy Unit	5	
Neonatal care unit	145	N-8	Oxygen Head Box (Neonatal Size)	5	
Neonatal care unit	146	N-9	BP Set (Neonatal)	3	
Neonatal care unit	147	N-13	Pulse Oxymeter	4	
Neonatal care unit	148	N-16	X-Ray Viewing Box	1	
Neonatal care unit	149	N-20	Syringe Pump	4	
Neonatal care unit	150	N-25	Oxygen flow meter, Humidifier and Regulator	24	
Neonatal care unit	151	N-26	Examination Lamp	2	
ORT	152	O&E-4	Baby Cots (normal chair with arms )	5	
Neonatal care unit	153	N-27	Desk for consultation	1	
Neonatal care unit	154	N-28	Chair for Dr. and Patients	3	
Neonatal care unit	155	N-29	Room Bed	2	
Neonatal care unit	156	N-30	Waste Pot	1	
Neonatal care unit	157	N-31	Locker	9	
Medical Education	158	ME-2	Resuscitator Baby (for cardiopulmonary resuscitation)	1	
Blood Collection Room	159	BCD-1	Desk for consultation	1	
Blood Collection Room	160	BCD-2	Chair for Dr. and Patients	2	
Blood Collection Room	161	BCD-3	Waste Pot	1	
Blood Collection Room	162	BCD-5	BP Apparatus Mercury with Stands (peads)	1	
Laboratory (Central)	163	PA-16	Laboratory Central Table Set	1	
Laboratory (Central)	164	PA-4	Hot Air Oven	1	
Laboratory (Central)	165	PA-12	Refrigerator Pharmaceutical	1	
Laboratory (Central)	166	PA-17	Laboratory Side Table Set (1500W)	2	
Laboratory (Central)	167	PA-18	Laboratory Side Table Set (1800W)	2	
Laboratory (Central)	168	H-27	Distillation Plant (water distiller)	1	
Laboratory (Central)	169	PA-13	Electronic Weighing Balance	1	
Laboratory (Central)	170	PA-20	Chair for Dr. and Patients	3	
Pathology	171	PA-19	Desk for consultation	1	
Pathology	172	PA-20	Chair for Dr. and Patients	3	
Pathology	173	PA-17	Laboratory Side Table Set (1500W)	3	
Chemistry	174	C-4	Laboratory Side Table Set (1500W)	3	
Chemistry	175	C-1	Photometer	1	
Chemistry	176	C-2	Automated Chemistry Analyzer	1	
Chemistry	177	C-3	Color Meter	1	
Chemistry	178	C-5	Desk for consultation	1	
Chemistry	179	C-6	Chair for Dr. and Patients	3	
Hematology	180	H-1	Hematology Analyzer 03 parts differential	1	
Hematology	181	H-4	ESR system (blood sedimentation set)	1	
Hematology	182	H-6	Binocular Microscope	1	
Hematology	183	H-7	Water Bath	1	
Hematology	184	H-8	Laboratory Incubator Small Size	1	

Department		New No.	Name of Item	Qty	*
Hematology	185	H-13	Coagulation Analyzer	1	
Hematology	186	H-15	Sample Mixer (roller)	1	
Hematology	187	H-21	DLC Manual Counter	1	
Hematology	188	H-28	Clinical Centrifuge Machine 8000rpm	1	
Hematology	189	H-29	Laboratory Side Table Set (1500W)	3	
Hematology	190	H-30	Desk for consultation	1	
Hematology	191	H-31	Chair for Dr. and Patients	3	
Blood Transfusion Unit	192	BB-15	Desk for consultation	1	
Blood Transfusion Unit	193	PA-17	Laboratory Side Table Set (1500W)	3	
Blood Transfusion Unit	194	BB-16	Chair for Dr. and Patients	3	
Blood Transfusion Unit	195	BB-18	Weighing Scale for adult	1	
Blood Transfusion Unit	196	BB-19	Hemoglobin Meter with Centrifuge	1	
Blood Transfusion Unit	197	BB-20	BP Apparatus (adult cuff)	1	
Blood Transfusion Unit	198	BB-13	Blood Donor Beds	2	
Blood Transfusion Unit	199	BB-21	Bag Shaker	2	
Blood Transfusion Unit	200	BB-2	Centrifuge for Blood Washer (8000rpm)	1	
Blood Transfusion Unit	207	BB-27	Thawing water bath	1	add
Blood Transfusion Unit	208	BB-28	Blood bag refrigerator	1	add
Blood Transfusion Unit	201	BB-22	Micro Pipettes Set	1	
Blood Transfusion Unit	202	BB-6	Elisa (Plate reader) with printer & automated washer	1	
Blood Transfusion Unit	203	BB-9	Refrigerator Centrifuge for Blood Bags (Cryofuge)	1	
Blood Transfusion Unit	204	BB-23	Deep Freezer Domestic (-53°(138L))	1	
Blood Transfusion Unit	205	BB-24	Platelets Incubator with Agitator	1	
Blood Transfusion Unit	206	BB-3	Water Bath	1	
Blood Transfusion Unit	207	BB-11	Manual Plasma Extractor	1	
Blood Transfusion Unit	208	BB-12	Binocular Microscopes	1	
Blood Transfusion Unit	209	BB-25	Tube Sealer	1	
Blood Transfusion Unit	210	BB-26	Waste Pot	1	
Radiology	211	R-3	X-Ray Unit 500 MA	1	
Radiology	212	R-4	Ultrasound Machine General Purpose	1	
Radiology	213	R-5	Radiology Accessories (sets)	1	
Radiology	214	R-6	Image Printer for X-ray	1	
Radiology	215	R-7	Portable X-Ray Plant 300 MA	1	
Radiology	216	R-8	Colour Doppler Ultrasound Machine	1	
Radiology	217	R-11	EEG	1	
Radiology	218	R-12	EMG/NCV Machine	1	
Radiology	219	R-20	Examination Couch	4	
Radiology	220	R-21	Waiting Chair (for 5 persons)	3	
Radiology	221	R-22	Waiting Chair (for 4 persons)	10	
Radiology(Dental)	222	D-2	X-Ray Unit (spot type)	1	
Radiology	223	R-23	Desk for consultation	3	
Radiology	224	R-24	Chair for Dr. and Patients	8	
OT	225	OT-1	Operation Tables with Stool	2	
OT	226	OT-2	OT Lights (Ceiling) Large	2	
OT	227	OT-4	Electric Suction Machine (L)	2	
OT	228	OT-6	X-Ray Viewing Box	2	
OT	229	OT-7	Instrument Trolley	3	
OT	230	OT-8	Infusion Pumps	1	
OT	231	OT-9	BP Apparatus Mercury with Stands (peads)	1	
OT	232	OT-10	Instrument Cabinet (7ft x 3ft x 2ft with two portion)	2	
OT	233	OT-11	CSSD Sterilization System	2	
OT	234	OT-12	Major Operation Sets	2	
OT	235	OT-13	Minor Operation Sets	2	
OT	236	OT-14	Patient Trolley	2	
OT	237	OT-15	ICU Beds for Recovery Room	2	
OT	238	OT-16	Capnograph for Each OT (multiparameter monitor incl.Co2)	2	
OT	239	OT-17	Laryngoscope (Children Blades)	2	
OT	240	OT-20	Peripheral Nerve Simulator	1	
OT	241	OT-22	Blood Warmer	1	
OT	242	OT-23	Fiber Optic Laryngoscope	1	
OT	243	OT-24	Diathermy Unit	1	
OT	244	OT-27	Ambu Bag (peads) (1L & 2L)	2	

Department		New No.	Name of Item	Q'ty	*
OT		245	PST-1 Rigid Pediatric Sigmoidoscope	1	
OT		246	PST-4 Rigid Bronchoscope	1	
OT		247	PST-5 Oesophago Scope Rigid	1	
OT		248	PST-9 Oesophagal Dilator	1	
OT		249	OT-36 Anesthesia Machine with Ventilator	2	*
OT		250	OT-37 IV Stand	3	
OT		251	OT-39 Mayor Instrument Stand	2	
OT		252	OT-40 Wash Basin Stand, Double Basin	2	
OT		253	OT-41 Kick Bucket	2	
OT		254	OT-42 Foot Step	2	
OT		255	OT-43 Room Bed	2	
OT		256	OT-44 Desk for consultation	2	
OT		257	OT-45 Chair for Dr.	4	
OT		258	OT-46 Examination Couch	1	
OT		259	OT-47 Examination Lamp	1	
OT		260	OT-48 Dressing Set	2	
OT		261	OT-49 Locker	2	
OT		262	OT-50 ICU Monitors (Patient monitors)	1	
OT		263	OT-51 Hand Scrub Unit (3 Sinks)	1	
OT		264	H-27 Distillation Plant (water distiller)	1	
OT		265	OT-52 Cast Cart (Sterilization Trolley)	1	
OT		266	OT-53 Landry Cart	2	
OT		267	OT-54 Working Table for CSSD (Stainless Steel.	1	
OT		268	OT-55 Waiting Chair (for 4 persons)	12	
OT		269	OT-56 Garbage Box	1	
OT		270	OT-57 Instrument Rack (steel rack for CSSD)	4	
OT		271	OT-58 Sterilization Drum	6	
Pharmacy		272	PH-1 Racks Iron	2	
Pharmacy		273	PH-2 Refrigerator for ward	1	
Pharmacy		274	PH-4 Medicine Cabinet with Key (Transparent Glass)	1	
Commonn		275	AD-1 Meeting Table and Chairs	1	
Commonn		276	AD-2 Presentation Apparatus (Projector)	1	
Commonn		277	AD-3 Book Rack	1	
Commonn		278	AD-11 Meeting Table Set	6	
Commonn		279	AD-12 File Rack for medical record	1	
Commonn		280	AD-9 Waiting Chair (for 4 persons)	11	
Commonn		281	AD-10 Waiting Chair (for 5 persons)	10	

Based on "Functional brief for RBC prepared for National Blood Transfusion Program in Islamabad on March 2011 Annex 2-SBTP RBC Equipment List NBTP", a blood bank refrigerator and a thraving water bath are added on Equipment List.



(3) 概要説明調査





MINUTES OF DISCUSSIONS  
PREPARATORY SURVEY ON THE PROJECT FOR  
IMPROVEMENT OF CHILD HEALTH INSTITUTE IN KARACHI  
IN THE ISLAMIC REPUBLIC OF PAKISTAN  
(EXPLANATION OF DRAFT REPORT)

In July and September 2011, Japan International Cooperation Agency (hereinafter referred to as "JICA") dispatched Preparatory Survey Teams on the Project for Improvement of Child Health Institute in Karachi (hereinafter referred to as "the Project") to the Islamic Republic of Pakistan (hereinafter referred to as "Pakistan"), and had a series of discussions with Pakistani authorities concerned and had field survey. Based on the result of the survey and technical examination in Japan, JICA prepared a draft report of the survey.

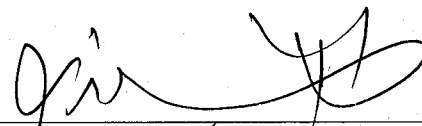
In order to explain and to consult with the Pakistani authorities concerned on the components of the draft report, JICA dispatched to Pakistan the Draft Report Explanation Team (hereinafter referred to as "the Team"), which is headed by Dr. Mitsuhiro Ushio, Executive Technical Advisor to the Director General, Human Development Department, JICA, from February 17 to February 25, 2012.

As a result of the discussions, both parties confirmed the main items described in the document attached hereto.


Karachi, February 23, 2012

牛尾 光宏

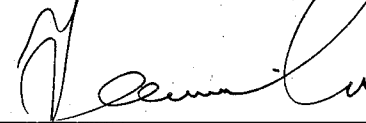
Dr. Mitsuhiro Ushio  
Leader  
Preparatory Survey Team  
Japan International Cooperation Agency



Mr. Syed Hashim Raza Zaidi  
Secretary  
Health Department  
Government of Sindh  
The Islamic Republic of Pakistan



Dr. Qazi Masood Ahmed  
Chief Economist  
Planning & Development Department  
Government of Sindh  
The Islamic Republic of Pakistan



Mr. Jamil Anwar  
Joint Secretary (ADB/Japan)  
Economic Affair Division  
The Islamic Republic of Pakistan

No. 188/Ja-I/12  
27-02-12

## ATTACHMENT

### 1. Components of the Draft Report

The Pakistani side agreed and accepted in principle the components of the Draft Report explained by the Team. The items targeted by the Project described in Annex-1 and Annex-2.

### 2. Japan's Grant Aid Scheme

2-1 The Pakistani side has shown full understanding of the Japan's Grant Aid Scheme and the necessary measures to be taken by the Government of Sindh as described in Annex-4, Annex-5 and Annex-6 of the Minutes of Discussions signed by both sides on July 15, 2011.

2-2 The project site including the construction site and temporary yard is located in the premises of Sindh Government Children Hospital as shown in Annex-3. The Pakistani side agreed to take the necessary measures to clear the construction site and temporary yard by start of the tender for the Project according to Annex-4.

### 3. Confidentiality of the Project Design

Both sides confirmed that all information related to the Project including detailed specifications of the facilities and equipment and other technical information shall not be disclosed to any outside parties before the conclusion of all the contract(s) for the Project.

### 4. Confidentiality of the Project Cost Estimation

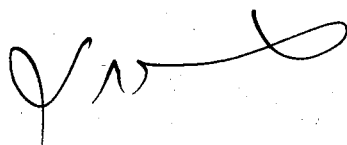
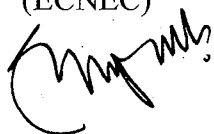

The Team explained that the Project Cost Estimation as described in Annex-5. Both sides agreed that the Project Cost Estimation should never be disclosed to any outside parties before the conclusion of all the contract(s) for the Project. The Pakistani side understood that the Project Cost Estimation is not final and is subject to change.

### 5. Schedule of the Study and PC-1

5-1 JICA will complete the Final Report (the Preparatory Survey Report) in accordance with the confirmed items and send it to the Government of Sindh around August 2012, if the Project is approved by Japanese Cabinet as scheduled.

5-2 Both sides confirmed the modified timetable of key actions for PC-1 as follows;

March 5, 2012	Development of PC-1 (Final) by the Pakistani side
March 24, 2012	Approval by Provincial Development Working Party (PDWP)
April 20, 2012	Approval by Central Development Working Party (CDWP)
May 18, 2012	Approval by Executive Committee of National Economic Council (ECNEC)



6. Other Relevant Issues

- 6-1 The Pakistani side agreed to secure all necessary staff for the improved Health Institute by the completion of the Project. The staff is 69 doctors including one ENT doctor, one ophthalmologist and one anesthetist, 24 nurses, 53 paramedical including one biomedical technician, and 76 management staff in total.
- 6-2 Both sides agreed that the Schedule for New Expenditure shall be approved within 60 days after the completion of the Project.
- 6-3 The Pakistani side has committed itself to taking every necessary measure to conduct the undertakings in a timely manner, including the signing of the Exchange of Notes (E/N) and the Grant Agreement (G/A).
- 6-4 Both sides reconfirmed that the Pakistani side shall take all necessary steps to secure the safety of the members of the Project according to the Minutes of Discussions signed by both sides on September 19, 2011.
- 6-5 The both sides confirmed that incinerator is not covered by the Japanese side in spite of the request of the Pakistani side.

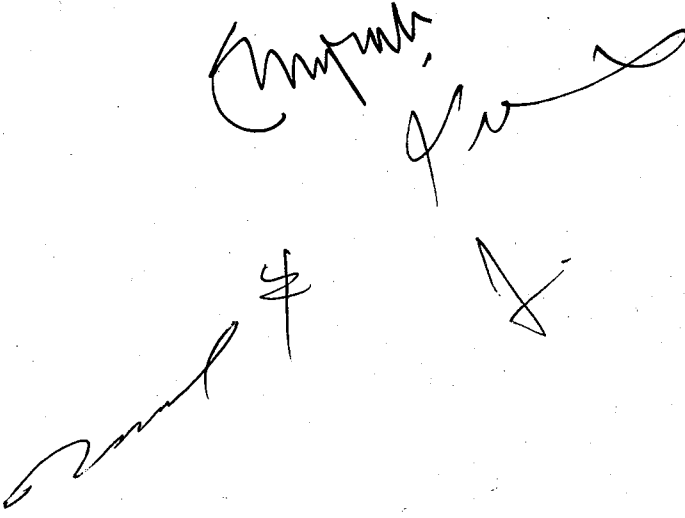
Annex-1: Components of Facility

Annex-2: Equipment List

Annex-3: Location of the Project Site

Annex-4: Tentative Schedule of the Project

Annex-5: Project Cost Estimation



Handwritten signatures and initials in black ink, including a large signature at the top left, a signature below it, and several initials and marks scattered below.

**Components of Facility**

Annex-1 Components of Facility

Department	Major Room	No. of Room	Remark
Ward (Internal)	6 bed-room	11	66 beds
	4 bed-room	6	24 beds
	5 bed-room	1	5 beds
	3 bed-room (high care unit)	2	6 beds
	Staff Station	4	
	Doc Room	2	
	Nurse Room	2	
	Treatment Room	2	
Ward (Surgeries)	4 bed-room	4	16 beds
	4 bed-room (high care unit)	1	4 beds
	Staff Station	1	
	Doc Room / Nurse Room	1	
Operation Theater	OT	2	
	Preparation	1	
	Auto Clave	1	
	Sterile Store	1	
	Sterile Pouch / Setting Room	1	
	Recovery	1	2 beds
	Staff Room	1	
	Changing	2	
	Surgery Doctor Room	1	
	Treatment Room	1	
Special OPD	Special OPD	6	
	Treatment Room	1	
Emergencies	Emergency Room	1	8 beds
	Isolation Emergency Room	2	2 beds
	ER Consultant	1	
	Doc Room	1	
	Duty	1	
Image Diagnostics	X-Ray	1	
	Operator	1	
	Doc Room	2	
	Ultrasound	2	
	EEG	1	
	EMG / Audiometry Room	1	
NCU	NCU	1	8 incubators
	Treatment	1	
	Doc / Nurse	1	
	Counseling	1	
	Mother Treatment NCU	1	10 incubators
	Mother Change	1	
	Changing	2	
	Duty Room	1	
PICU	PICU	1	8 beds
	Duty Room	1	
Laboratories	Laboratory (Central/Pathology)	1	
	Laboratory (Hematology)	1	
	Laboratory (Biochemistry)	1	
	Laboratory (Blood Transfusion Unit)	2	
	Blood Collection	1	
Common Area	Admission / Info	1	
	Office	1	
	Counseling	1	
	Drug Store	1	
	Pharmacy	1	
	Staff Rest	1	
	Canteen	1	
	Medical Superintendent	1	
	Staff Room	1	
Incidental Facilities	Electrical Room	2	

Handwritten signatures and marks at the bottom of the page, including a large '7' and several illegible signatures.

Annex-2 Equipment List (1/2)

Description	Ward (Internal Medicine)	Ward (Surgeries)	Emergencies	Special OPD (Pediatric Surgeries)	Special OPD (Pediatrics)	Special OPD	Special OPD (ENT, Eye)	Rehabilitation	NCU (Neonatal Care Unit)	Central / Pathology	Biochemistry	Hematology	Blood Transfusion Unit	Image Diagnostics	Operation Theater	Pharmacy	Other equipment	Total Qty
Ambu Bag (pediatrics) (1L and 2L)				1	1	1									2			5
Anesthesia machine with Ventilator															2			2
Auto Clave (Boiling Sterilizer)				1	1	1												3
Automated Chemistry Analyzer											1							1
Baby Cots					1				10									11
Baby Cots (normal chair with arms )									5									5
Bed Side Lockers	109	20																129
Binocular Microscope												1	1					2
Blood Warmer															1			1
BP Apparatus with Stand Mercury (pediatrics)	10		3		1	1	1						1		1			18
BP Set (Neonatal)					1				3									4
Capnograph for Each OT (multipara monitor incl.Co2)															2			2
Coagulation analyzer												1						1
Color Meter											1							1
Color Doppler Ultrasound Machine														1				1
Cycle							1											1
CSSD Sterilization System															2			2
Image Printer for X-Ray														1				1
Deep Freezer Domestic													1					1
Defibrillator	1		1															2
Diagnostic Set	1		2				1											4
Diathermy Unit															1			1
Distillation Plant (water distiller)									1						1			2
DLC manual counter												1						1
EEG														1				1
Electric Suction Machine (L)															2			2
Electric Suction Machine (S)	4		2	1		1			1									9
Electronic weighting balance										1								1
Emergency Beds			8															8
EMG/NCV Machine														1				1
ENT Unit (audiometer)							1											1
ESR System (blood sedimentation set)												1						1
Fiber optic Laryngoscope															1			1
File Rack for medical record																	1	1
First aid kit			2															2
Glucometer			1		1	1												3
Hematology Analyzer 03 parts differential												1						1
Hospital Beds with mattress	101	16																117
Hot Air Oven										1								1
ICU Beds for Recovery Room	8	4													2			14
ICU Monitors (Patient Monitors)	4	2							4						1			11
Indirect Laryngoscope							1											1
Infusion Pumps	8	2	2												1			13
Instrument Cabinet	3	2	1						1					4	3			14
Instrument Trolley	4	2		1											3			10
Emergency Trolley			2															2
Jumping jacks (trampoline)								1										1
Laboratory incubator Small Size												1						1
Laboratory central table set										1								1
Laboratory side table set (1500W)										3								3
Laryngoscope (Children Blades)	2		2		2	1									2			9
Major Operation Sets															2			2
Dressing Set	2	2	2												2			8
Minor Instrument for ENT examination							1											1
Minor Operation Sets															2			2
Neonatal Height & Weight scale						1												1
Occupational Therapy Set								1										1
Esophageal Dilator															1			1
Oesophago Scope rigid															1			1
Operation Tables with Stool															2			2
Ophthalmoscope			2				1											3
OT Lights (Ceiling) Large															1			1
Mobile OT light with battery															1			1
Oxygen Head Box (Neonatal Size)									5									5
Patient Trolley			2												2			4
Peripheral Nerve Simulator															1			1
Photometer											1							1
Phototherapy Unit									5									5
Portable X-Ray Plant 300 MA														1				1
Pulse Oxymeter	8		3			1			4									16
Racks Iron																	11	11
Radiology Accessories (sets)														1				1
Refraction Set							1											1

Handwritten signatures and initials at the bottom of the page.

Annex-2 Equipment List (2/2)

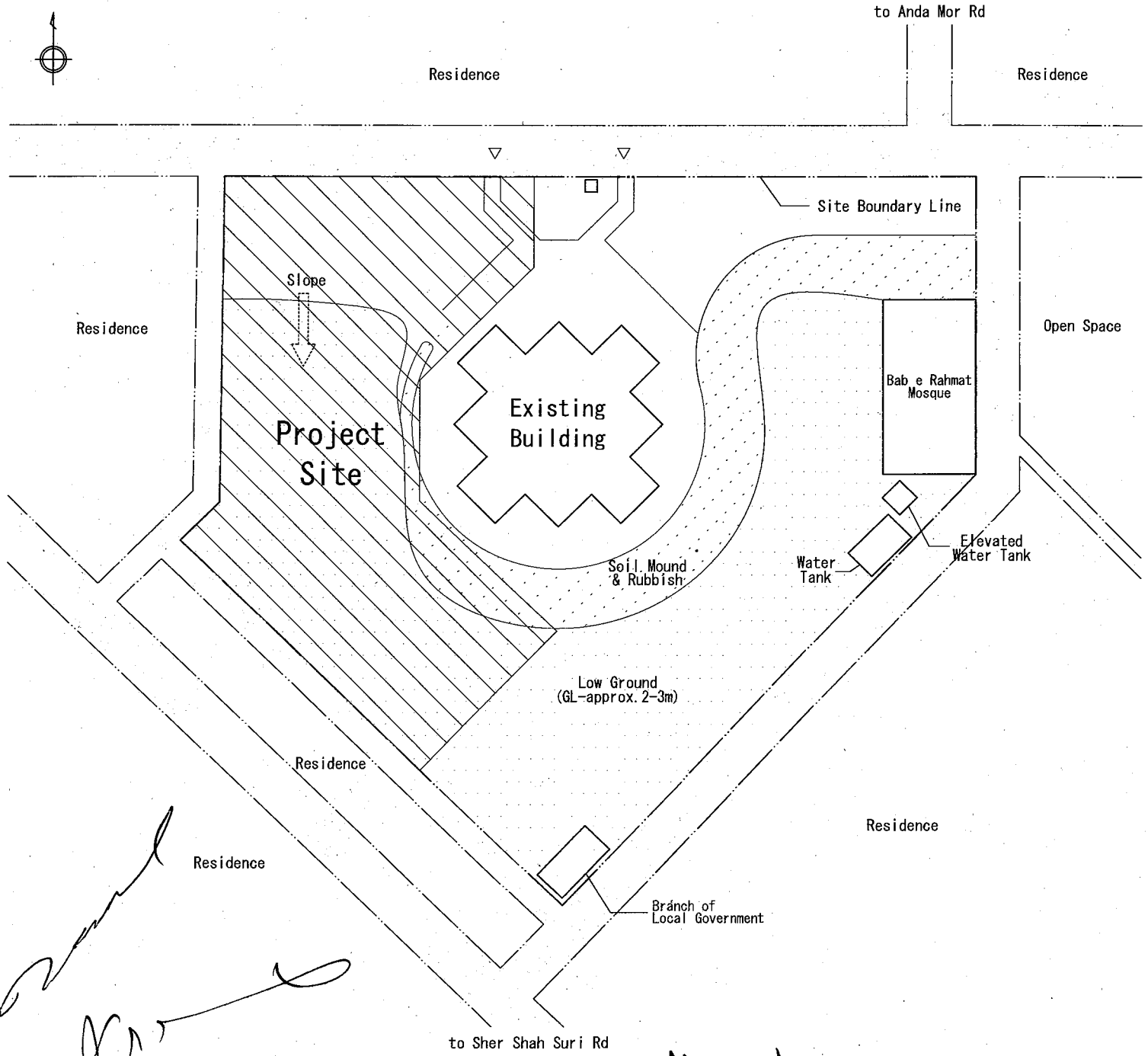
Description	Ward (Internal Medicine)	Ward (Surgeries)	Emergencies	Special OPD (Pediatric Surgeries)	Special OPD (Pediatrics)	Special OPD	Special OPD (ENT, Eye)	Rehabilitation	NCU (Neonatal Care Unit)	Central / Pathology	Biochemistry	Hematology	Blood Transfusion Unit	Image Diagnostics	Operation Theater	Pharmacy	Other equipment	Total Qty
Refrigerator Pharmaceutical	2				1	2				1						1		7
Rehabilitation chairs of different sizes								1										1
Resuscitator for baby (cardiopulmonary resuscitation)									1									1
Retinoscope							1											1
Rigid Bronchoscope															1			1
Rigid Pediatric Sigmoid scope															1			1
Sample Mixer (roller)												1						1
Saturation Monitor (Patient monitor)	8																	8
Slit Lamp							1											1
Stoll Bars (parallel bars)								1										1
Syringe Pumps		2							4									6
Ultrasonic Nebulizer (Hospital Use)	4		2															6
Ultrasound Machine General Purpose													1					1
Ultrasound Therapy Unit								1										1
Walking support bars with walker (walking support bar)								1										1
Water bath												1	1					2
Weight Training								1										1
Wheel Chairs	4																	4
X-Ray Unit Spot Type														1				1
X-Ray Unit 500 MA														1				1
X-Ray Viewing Box	4			1	1	1			1							2		10
Oxygen flow meter & humidifier	14	4	10						18						6			52
Examination Couch	2	1	3	2	1	1								4	1			15
Examination Lamp				1	1	1			2						1			6
Blood Bank Refrigerator													1					1
Hematocrit centrifuge												1						1
Centrifuge for blood wash													1					1
Room Bed	5	1	1						2						1			10
Garbage box	1		1												1			3
Chair for Doctor and Patients	6	4	3	2	3	4	4		4	8	3	1	5	8	4			59
Desk for consultation	4	1	1	1	1	1	2		2	0	0	0	2	3	2			20
IV Stand	39	8	5												3			55
Medicine Cabinet with Key (Transparent Glass)	1	1	1						1							1		5
Waiting Chair (for 4 persons)			4										2	2			36	44
Laundry Cart	2	1													2			5
Hospital Sluice Sink	3	1	1			1									1			7
Waste Pot		2	3	1	1	2	2		1				2					14
Locker		6							3						2			11
Mayo Instrument Stand															2			2
Wash Basin Stand, Double Stand															2			2
Kick Bucket															2			2
Foot Step															2			2
Hand Scrub Unit (3 Sinks)															1			1
Cast Cart (Sterilization Trolley)															1			1
Working Table for CSSD															1			1
Instrument Rack for CSSD															4			4
Sterilization Drum															6			6
Meeting Table and Chairs																	1	1
Presentation Apparatus (Projector)																	1	1
Book Rack																	1	1
Weighing scale for adult													1					1
Hemoglobin meter with centrifuge												1						1
BP apparatus (adult cuff)												1						1
Blood donor beds												2						2
Bag shaker												2						2
Micro pipette set												1						1
Elisa micro plate reader & automated washer												1						1
Refrigerated centrifuge for blood bags (cryofuge)												1						1
Platelets incubator with agitator												1						1
Manual Plasma Extractor												1						1
Tube sealer for blood bag												1						1
Meeting Table Set																	6	6
Thawing water bath													1					1
UPS 0.5KVA											1			1	2			4
UPS 1KVA											1	1		1				3
UPS 2KVA													2					2
*Neonatal Height & Weight scale			1															1
*ECG machine			1															1
*Blood gas machine										1								1
*Electrolyte machine										1								1
*Infant incubator									8									8
*Phototherapy Unit									2									2
*Infant warmer									1									1

\* To be relocated from the existing facility by the Pakistani side

# X N [Handwritten signatures]

# Project Site

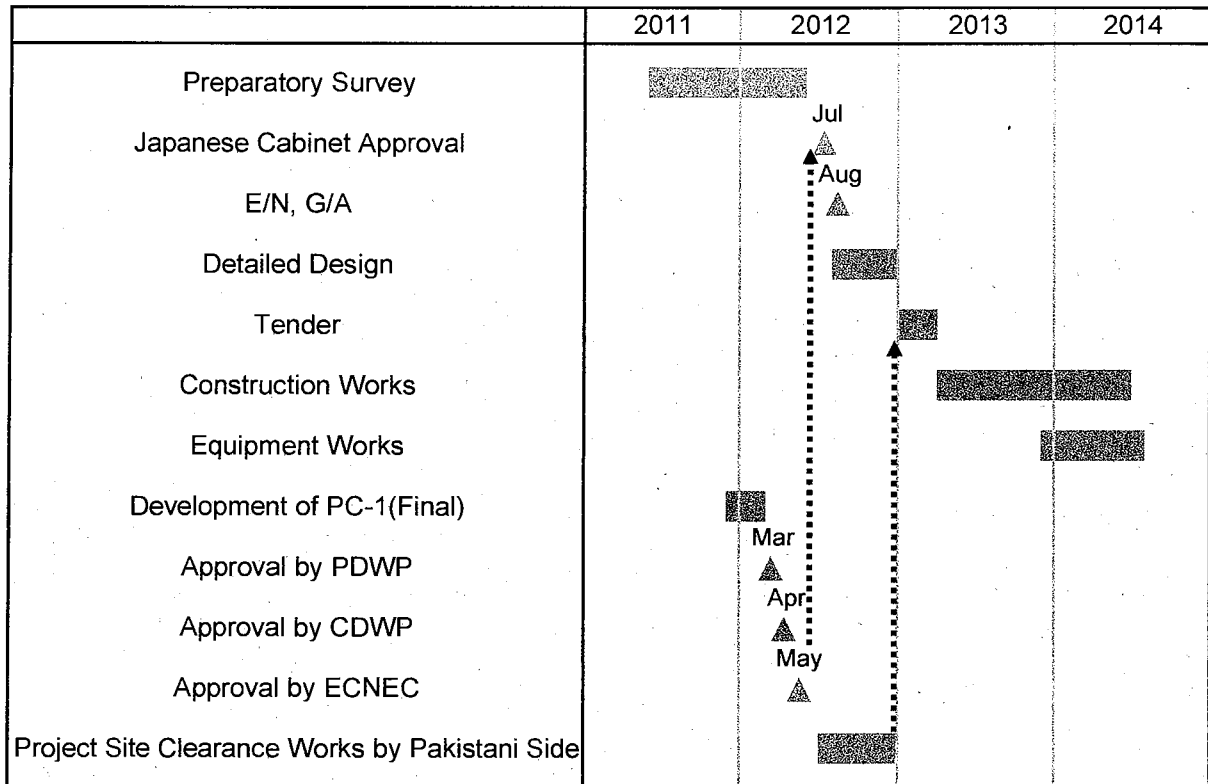
Address : St-18 Sector 14-B Opposite Maria Homes,  
Near Nagan Chowrangi, North Karachi



*[Handwritten signatures and marks]*



**Tentative Schedule of the Project**



*Handwritten signatures and initials:*

- Large signature on the left.
- Signature in the center: "Chaudhry" (likely Chaudhry).
- Signature below it: "Ghosh" (likely Ghosh).
- Initials "J." to the right.
- Initials "4" below "Ghosh".

## Project Cost Estimation (Initial Cost Estimation)

## 1. Estimation Condition

- (1) Estimation Date: September, 2011
- (2) Exchange Rate: 1 USD = 81.55 JPY  
1 Rs = 0.92 JPY
- (3) Work Period: 16 months
- (4) Contract Package: Separate contracts for construction works and equipment works, to Japanese contractors
- (5) Tax Exemption: Under the framework of Japan's Grant Aid, Japanese nationals engaged in the implementation of the Project will be exempted from all the taxes including custom duties, internal taxes and other fiscal levies which may be imposed in Pakistan based on verified contracts.

## 2. Estimated Project Cost

Item	Estimated Cost (million Rs)	
<b>Japanese Portion</b>		
Construction Cost	1,114	1,380
Medical Equipment Cost	266	
Consulting Services Fee		167
Subtotal of Japanese Portion		1,547
<b>Pakistani Portion</b>		
Related to Construction		18
Related to Hospital Operation		1
Related to Procedures		2
Subtotal of Pakistani Portion		21
<b>Total of the Project Cost</b>		<b>1,568</b>

- Notes: 1. The cost estimation is provisional and would be further examined by the Government of Japan for approval of the grant.
2. The above cost estimation will not be equal to the budget limit indicated in the E/N and/or G/A.
3. The Pakistani portion can be reviewed for PC-1 by the Pakistani side.



## 5 収集資料リスト



## 5. 収集資料リスト

### (1) 第一次概略設計調査

2011年 7月 24日現在

地域	南アジア	調査団名 または専 門家氏名	準備調査	調査の種類ま たは指導科 目	カラチ小児病院改善計画準備調査	作成部課	株式会社 山下設計
国名	パキスタ ン国	配属機関 名	シンド州 保健局	現地調査期 間 または派遣期 間	平成 23 年 7 月 4 日 ～平成 23 年 7 月 24 日 (第 1 次調査)	担当者氏名	津本 正芳

番号	資料の名称	版型	ペ ー ジ 数	オリジナル コピーの別	部数	発行社等(発行年)	寄贈・購入 (価格)の別
1.	Model Standard Operating Procedures for Blood Transfusion Service					パキスタン国保健省 (2007)	寄贈
2.	Summary of Revue Component DHQ Thatta					シンド州保健局	寄贈
3.	Family Planning Promotion Pamphlet					シンド州	寄贈
4.	Budget current expenditure					シンド州保健局 (2010)	寄贈
5.	医師、看護師、パラメディカル卒業教 一覧					シンド州保健局 (2011)	寄贈
6.	Monthly report , カラチ小児病院					カラチ小児病院 (2009-2010)	寄贈
7.	カラチ小児病院 予算データ					カラチ小児病院 (2008-2011)	寄贈
8.	カラチ小児病院 スタッフ一覧					カラチ小児病院 (2011)	寄贈
9.	Health Profile of Sindh by District					統計局 (2010)	寄贈
10.	MNCH Program Presentaiton					シンド州保健局 (2011)	寄贈
11.	Pediatrics News			オリジナル		アバシ・シャヒーード病院 (2011)	寄贈
12.	Standard List of Medical Equipment/Furniture 50beded					シンド州保健局	寄贈
13.	Standard List of Medical Equipment/Furniture 200beded					シンド州保健局	寄贈
14.	PC-1 for the rehabilitation of Child Health Institute, Islamabad					CDWP (2003)	寄贈
15.	List of registered Blood Bank in Karachi (84)					Sindh Blood Transfusion authority (2011)	寄贈
16.	Development Statistics of Sindh 2008					統計局 (2008)	寄贈
17.	SINDH District -Based Multiple Indicators Cluster Survey 2003-2004					Planning and Development, Gov. of Pakistan (2004)	寄贈
18.	Presentation material of Pediatric ward					アバシ・シャヒーード病院 (2006)	寄贈
19.	NICH プレゼンテーション資料			ソフトコピ ー		NICH (2010)	寄贈
20.	NICH 平面図 (GF)	A4	1	コピー		NICH (2011)	寄贈
21.	Brief of Children Hospital, PIMS, Islamabad					PIMS	寄贈
22.	Child Health Institute at Karachi and Sukkur Organization Chart						寄贈
23.	Monthly Broadcast Data for the month of May 2011					Computerised Data Processing Centre (2011)	寄贈
24.	カラチ小児病院図面 (部分)	A1		コピー			寄贈

## (2) 第二次概略設計調査

2011年 9月 30日現在

地域	南アジア	調査団名 または専門 家氏名	準備調査	調査の種類ま たは指導科 目	カラチ小児病院改善計画準備調査	作成部課	株式会社 山下設計
国名	パキスタ ン国	配属機関 名	シンド州 保健局	現地調査期 間 または派遣期 間	平成23年9月10日 ～平成23年9月30日(第2次調査)	担当者氏名	津本 正芳

番号	資料の名称	版型	ペー ジ数	オリジナ ル コピーの別	部数	発行社等(発行年)	寄贈・購入 (価格)の別
1.	Agenda of Training Workshop for Technicians and Technologists	Word	2	ソフトコピ ー			寄贈
2.	Federal BT Act 2010	PDF	24	ソフトコピ ー			寄贈
3.	Functional Brief	PDF		ソフトコピ ー			寄贈
4.	Inventory of Training Institutes	PDF	49	ソフトコピ ー			寄贈
5.	List of Regional Blood Centres and Hospital Blood Banks	PDF	4	ソフトコピ ー			寄贈
6.	National Blood Donor Policy 2011	PDF	6	ソフトコピ ー		GIZ	寄贈
7.	National Blood Policy and Strategic Framework	PDF	40	ソフトコピ ー			寄贈
8.	NIH 1999 National Standards and Guidelines for BTS	PDF		ソフトコピ ー			寄贈
9.	Sindh BT Act 2010	PDF	24	ソフトコピ ー			寄贈
10.	JPMC 新生児科/産婦人科統計データ	A4	11	コピー	1	ジンナ医科大学病院 (2010)	寄贈
11.	救急部門月別処置リスト/カラチ小児病院	A4	12	コピー	1	カラチ小児病院 (2010-2011)	寄贈
12.	既存インフラ使用量/カラチ小児病院	A4	1	コピー	1	カラチ小児病院	寄贈

## 6 計画機材リスト











