

CRISIS MANAGEMENT SYSTEM (CMS) IN THE REPUBLIC OF MACEDONIA

26 February, 2010

Stevko Stefanoski

© Центар за управување со кризи

OVERVIEW:

1. CONCEPTUAL AND NORMATIVE SETUP OF THE CRISIS MANAGEMENT SYSTEM (CMS)
2. GOALS OF THE CRISIS MANAGEMENT SYSTEM
3. ENTITIES THAT CONSTITUTE THE CMS
4. CMS FUNCTION AND ORGANIZATION
5. CRISIS MANAGEMENT CENTER (CMC)

1. CONCEPTUAL AND NORMATIVE SETUP OF THE CMS

- ❖ **Change of traditional risks affecting the security on global level,**
- ❖ **High position in the security strategies of NATO and ESDP,**
- ❖ **Integrated approach, both on national and international level.**

1. CONCEPTUAL AND NORMATIVE SETUP OF THE CMS

LEGAL BASIS OF THE CMS

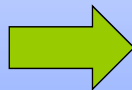
- ❖ **National Concept of Security and Defence (June 2003)**
- ❖ **Strategic Defense Review (December 2003)**
- ❖ **Law on Crisis Management (“Official Gazette of RM” No. 29/2005)**
- ❖ **National Security Strategy (2008)**
- ❖ **National Platform for Disaster Risk Reduction (2009)**

2. GOALS OF THE CRISIS MANAGEMENT SYSTEM

1. PREVENTION

2. EARLY

WARNING



2. TREATMENT

3. RECOVERY

Risks and threats according to the Law on Crisis Management

- National security threats (terrorism, org. crime, corruption, proliferation, WMD, etc.);
- Natural catastrophes (floods, earthquakes, wildfires, droughts, etc.);
- Epidemics, episodes, epifitosis;
- Environmental hazard (technical technological catastrophes);

© Центар за управување со кризи

2. GOALS OF THE CRISIS MANAGEMENT SYSTEM

- Provides prevention and coordinated reaction in cases when the goods, health and the lives of the people and animals are threaten and as a result of natural disasters and epidemics or other risks and dangers that directly threaten the constitutional order and the security of the Republic of Macedonia



© Центар за управување со кризи

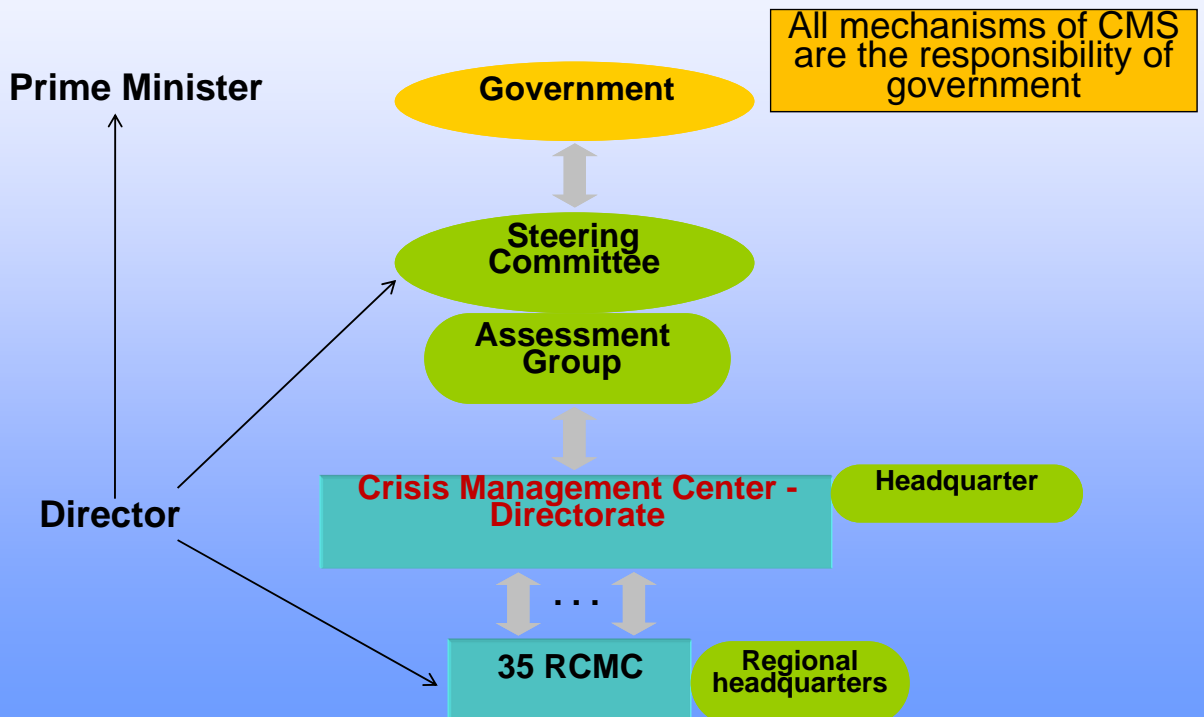
3. ENTITIES THAT CONSTITUTE THE CMS

- State administrative body;
- State authorities;
- The armed forces (Army of the Republic of Macedonia);
- The protection and rescue forces;
- Municipalities and the City of Skopje;
- Public enterprises;
- Public institutions, services and trade companies;
- The citizens and associations of citizens;
- Macedonian Red Cross;
- Non-governmental and humanitarian organizations;
- Media;
- Other legal entities.

4. CMS FUNCTION AND ORGANIZATION

- Collects information, provided by all entities in the CMS,
- Analysis
- Organization of risk assessment process, and preparation of unified Assessment (supported by adequate Methodologies),
- Coordinated prevention activities
- Early warning
- Crisis handling

4. CMS FUNCTION AND ORGANIZATION



© Центар за управување со кризи

4. CMS FUNCTION AND ORGANIZATION

- Collects information, provided by all entities in the CMS,
- Analysis
- Organization of risk assessment process, and preparation of unified Assessment (supported by adequate Methodologies),
- Coordinated prevention activities
- Early warning
- Crisis handling

4. CMS FUNCTION AND ORGANIZATION

CRISES SITUATION

- **The declaration of a crisis situation is made by the Government and it determinates the region affected by the crisis and according to that it activates the mechanisms for the resolving of the crisis situation**
- **Not longer than 30 days**
- **In the case when the crisis lasts longer than 30 days, the Government should propose to the Parliament extension of the crisis or declaration of state of war or state of emergency**

11

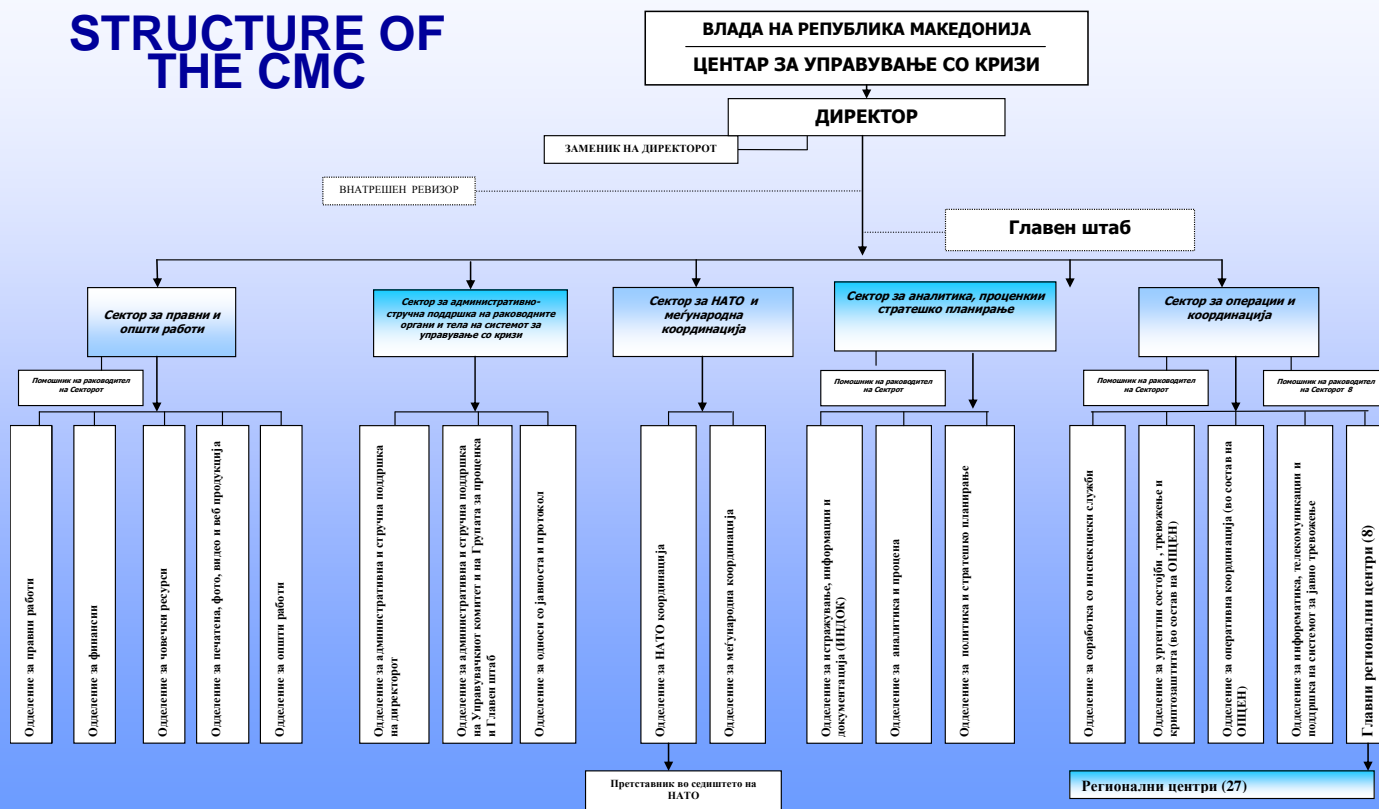
© Центар за управување со кризи

5. CRISIS MANAGEMENT CENTER (CMC)

- **An independent governmental body that has a status of a directorate**
- **Main functions:**
 - Providing continuity of the inter-departmental and international cooperation,
 - Consultations and coordination of the crisis management;
 - Preparation and update of the assessment of all risks and treats to the security of the Republic of Macedonia;
 - Proposing measures and activities for resolving a crisis situation, and
 - Executing other activities pursuant to the Law

The CMC shall provide the overall support (expert, organizational, administrative, etc.) of the Steering Committee, Assessment Group and the other entities of the CMS and NP for DRR.

STRUCTURE OF THE CMC



© Центар за управување со кризи

5. CRISIS MANAGEMENT CENTER (CMC)

In order to provide permanent communication, coordination and shearing information with all entities in the CMS, CMC established:

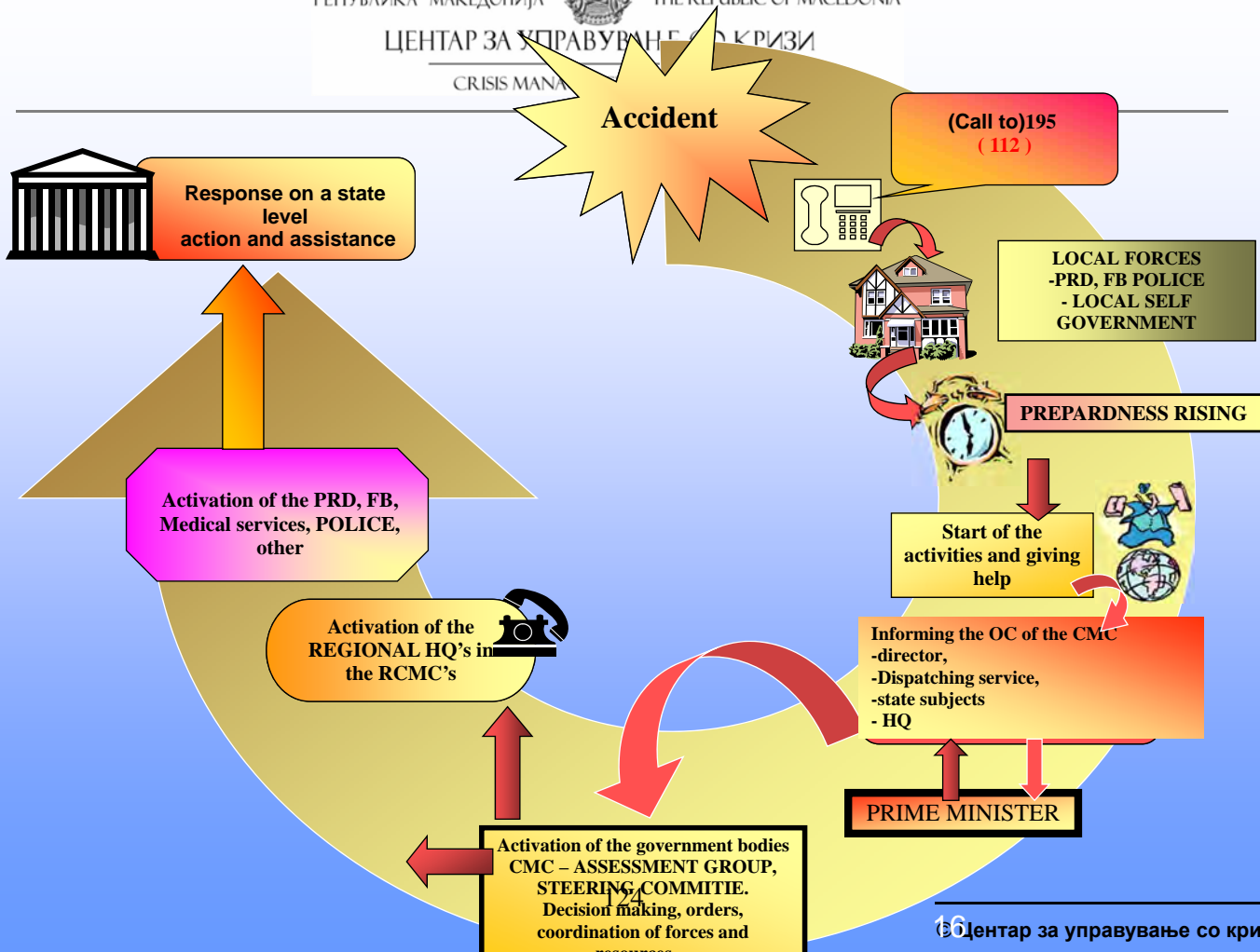
- Unique communication and information system, with a single call number – **195**, in case of risks, dangers and other accidents covering whole territory of the Republic with a 24/7 hours availability .



EUROPEAN EMERGENCY NUMBER 112



© Центар за управување со кризи



© Центар за управување со кризи

5. CRISIS MANAGEMENT CENTER (CMC)

- The CMC doesn't have resources
- The decision to apply the resources of the state administration, the units of the local self-government and the City of Skopje, as well as the management with the same in a crisis is adopted by the Government
- The President decides for the participation of a part of the Army in a case of crisis



© Центар за управување со кризи

5. CRISIS MANAGEMENT CENTER (CMC)

REGIONAL ORGANIZATION:

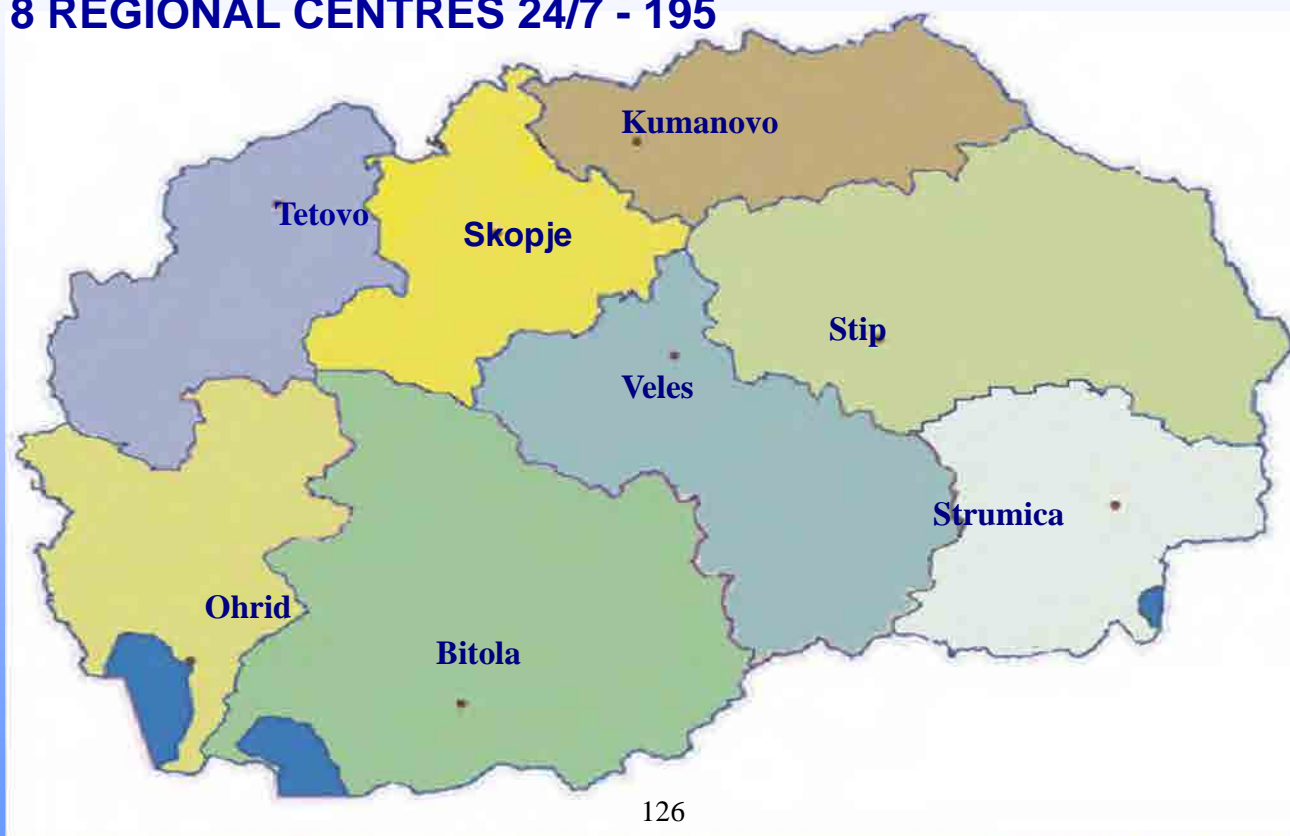
- In order to inform, monitor the situation, exchange information and data and make proposals for management of the crisis situation according to the Law for Crisis Management, in the CMC are established 35 regional crisis management centres – RCMC:
 - 8 Main Regional centres and
 - 27 Smaller Regional centres

35 REGIONAL CENTRES



© Центар за управување со кризи

8 REGIONAL CENTRES 24/7 - 195



© Центар за управување со кризи



RCMC BITOLA



© Центар за управување со кризи

Thank You
for Your Attention.

Use of GIS in The Crisis Management Center of The Republic of Macedonia

© Центар за управување со кризи

Agenda

- The need for GIS implementation
- Description of GIS in CMC
- Examples of using GIS in CMC
- Future plans
- Conclusion

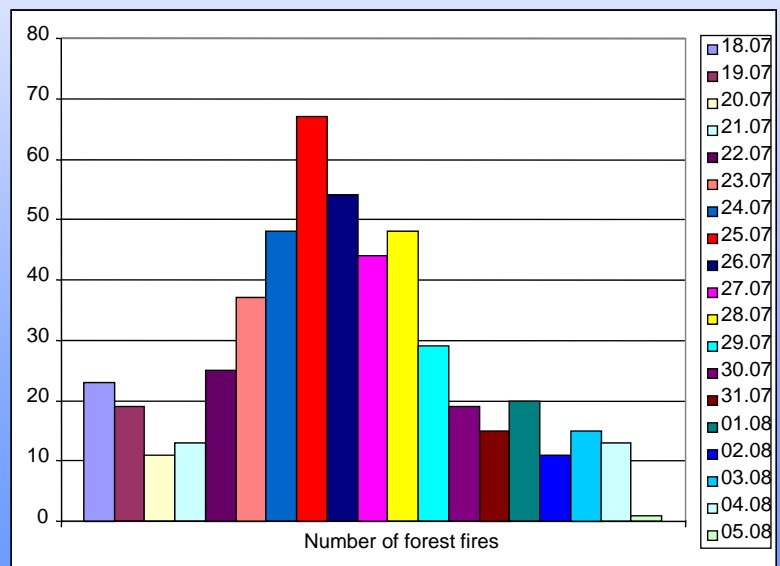
The Need For GIS Implementation

- Keeping record and spatial locating of the needed human and material resources of the subjects in the system, for their rational and effective use in all the phases of the crisis management
- Keeping record and following the events that may cause consequences of wider proportions
- Preparation of analysis, reports and information for the needs of CMC and all the participants in the CMS

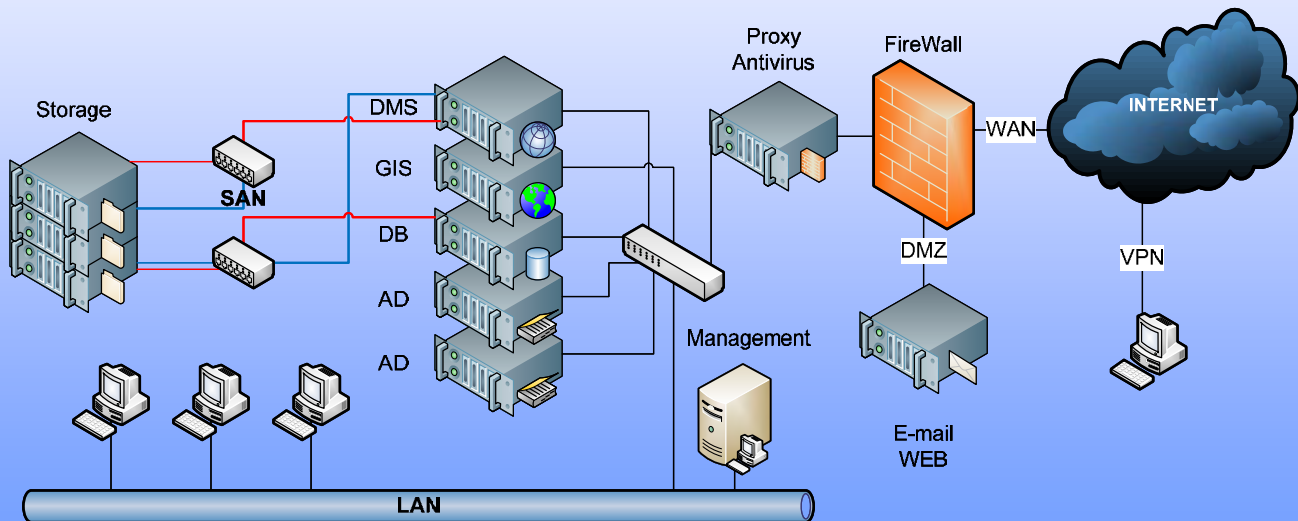
Example: Crisis situation in 2007

Day	Number of fires
18.07	23
19.07	19
20.07	11
21.07	13
22.07	25
23.07	37
24.07	48
25.07	67
26.07	54
27.07	44
28.07	48
29.07	29
30.07	19
31.07	15
01.08	20
02.08	11
03.08	15
04.08	13
05.08	1

Number of active forest fires in the Republic of Macedonia from 18.07. to 05.08.2007



IT Infrastructure in CMC



© Центар за управување со кризи

Architecture of GIS in CMC

- Hardware platform
 - Server for GIS - Fujitsu Siemens Primergy RX200-S3
 - SAN (Storage Area Network) Disk System with 250 GB dedicated storage for GIS related data (cached maps & geo-database)
- Database platform
 - Microsoft SQL Server 2005 Workgroup Edition on separate server machine Fujitsu Siemens Primergy RX300-S3
- Software platform – Server side
 - OS Microsoft Windows Server 2003 R2 Standard Edition
 - ESRI ArcGis Server Enterprise Standard 9.3

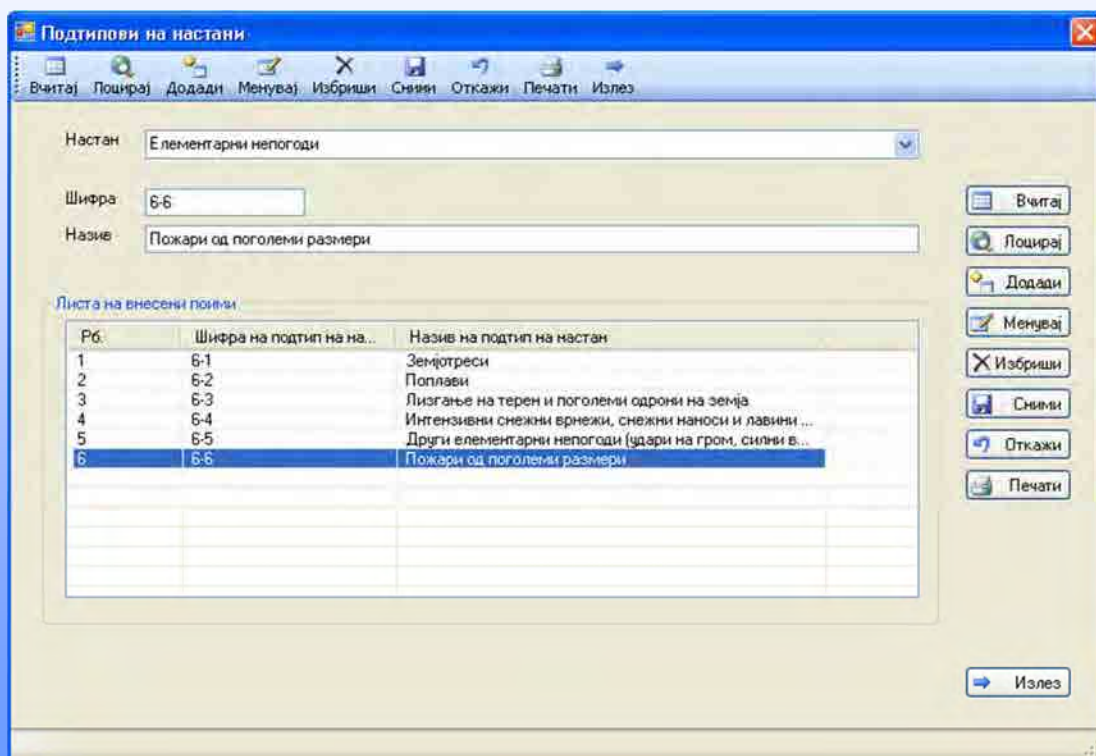
- Software platform – Client side
 - ESRI ArcEditor 9.3 (one concurrent licence) + ArcGis Extension 3D Analyst
 - Custom developed data viewer web-based application
 - Custom developed desktop application for entry of spatial and attribute data into the geo-database (Donation from UNDP)
- Maps 1:25.000 (Donation from JICA)
 - 105 (51%) digital raster topographic maps of the Republic of Macedonia;
 - 105 (51%) digital vector topographic maps of the Republic of Macedonia;
 - Orthophoto maps of whole territory of the Republic of Macedonia;
 - DTM (Digital terrain model) 20m grid of whole territory of the Republic of Macedonia.

Overview of the application for data entry into the geo-database

- Client/server based Windows application
- Intuitive and easy to use user interface for data input
- Allows data and information input relevant to The Crisis Management System, in a defined database structure which allows easy elaboration and analysis of the data
- The application uses the existing data model developed for the application “Web Viewer of Events and Resources”

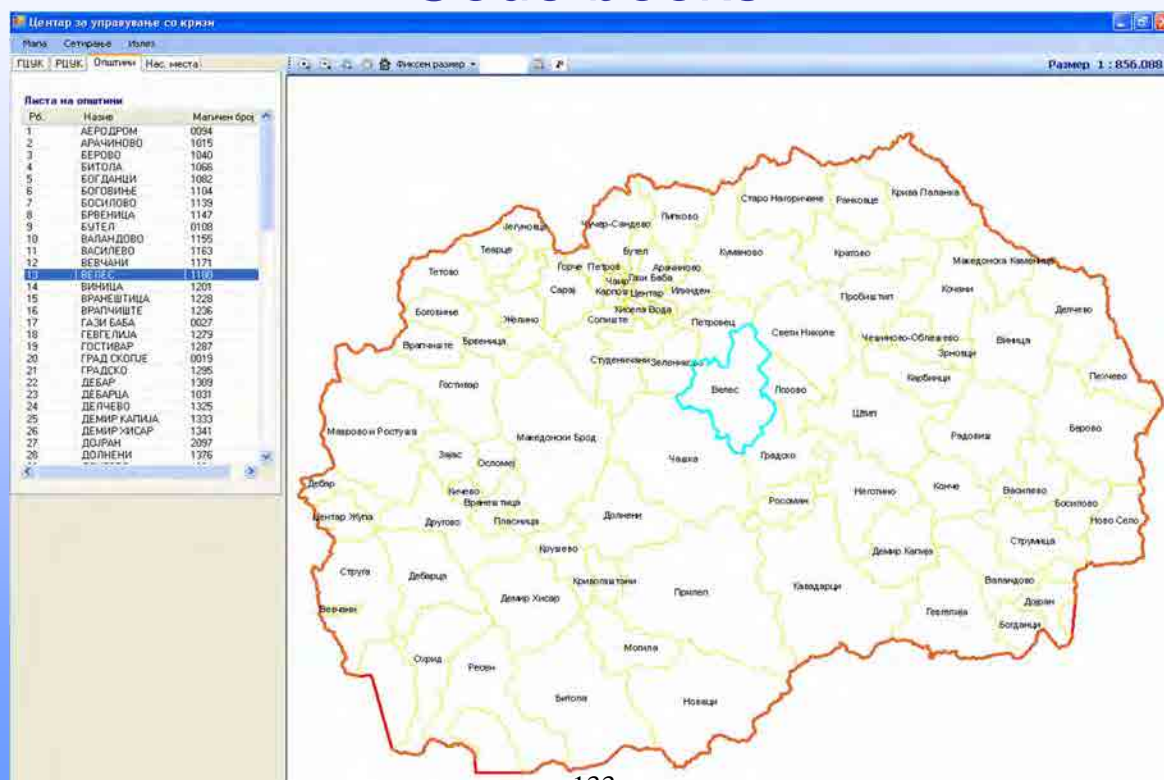
Code books

- Events
- Subjects
- Resources
- Information sources
- Consequences
- Categories of aid



© Центар за управување со кризи

Code books



© Центар за управување со кризи

Code book for attributes

Табели: **Видови ресурси** Записи: **Противпожарно возило**

Атрибут:

Опис:

Тип на податок: **Текстуален** Должина: **0** Децимали: **0**

Подразбирана вредност:

Листа на внесени поими:

Rb.	Назив на атрибут	Опис	Тип	Должина	Дец...	Подразбиран...
1	Капацитет	Капацитет на возилото изра...	Бројчан	0	0	
2	Број на лица	Број на лица што може да с...	Бројчан	0	0	

© Центар за управување со кризи

Creation of event phase

Настан: **Пожар на Беласица**

Rb.	Настан	Статус
1	Пожар во Прилеп	Тековен
2	Пожар на Пелестер	Тековен
3	Пожар во селскиот центар Тетово	Завршен
4	Пожар во Градско	Тековен
5	Пожар на Беласица	Тековен

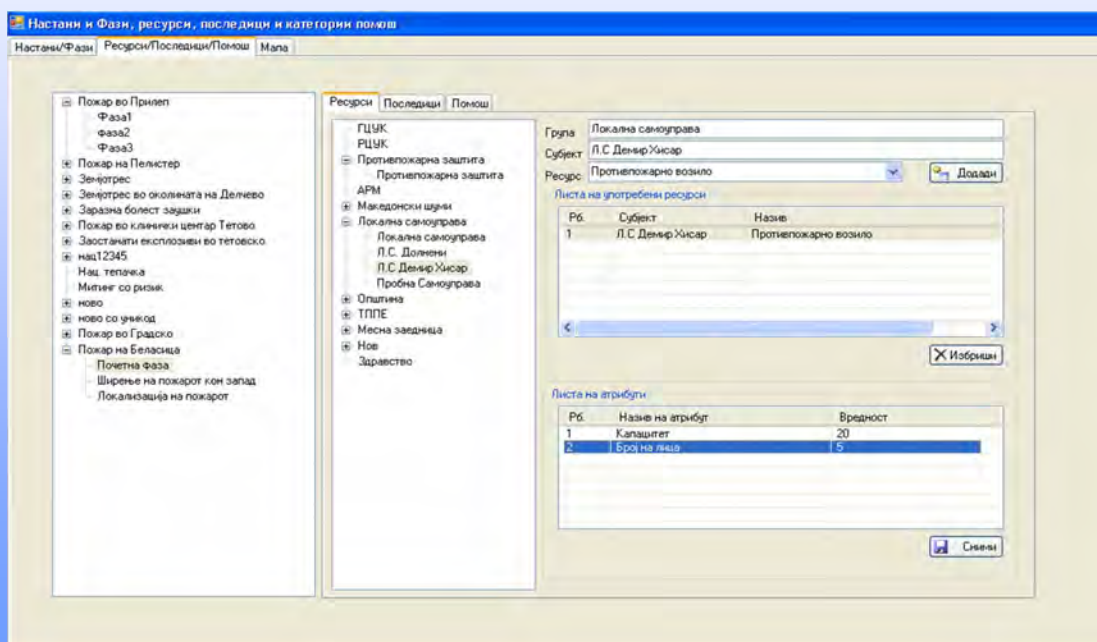
Листа на фази на настани:

Rb.	Фаза	Започната	Завршена	Избор
1	Почетна фаза	15.04.2009	15.04.2009	4
2	Ширење на пожарот кон запад	16.04.2009	16.04.2009	4
3	Локализација на пожарот	17.04.2009	17.04.2009	4

Листа на атрибуты:

Rb.	Назив на атрибут	Вредност
1	Зафатена површина	45
2	Повредени лица	

Resources used in the phase



© Центар за управување со кризи

Consequences in the phase

